

SCALE: N.T.S.	APPROVED BY	10100 ROCKET BOULEVARD ORLANDO, FLORIDA
DATE: 4/20/95	REVISION SERVICE	
	DRAWING NUMBER	CCCVI295

PERMA-FIX OF ORLANDO

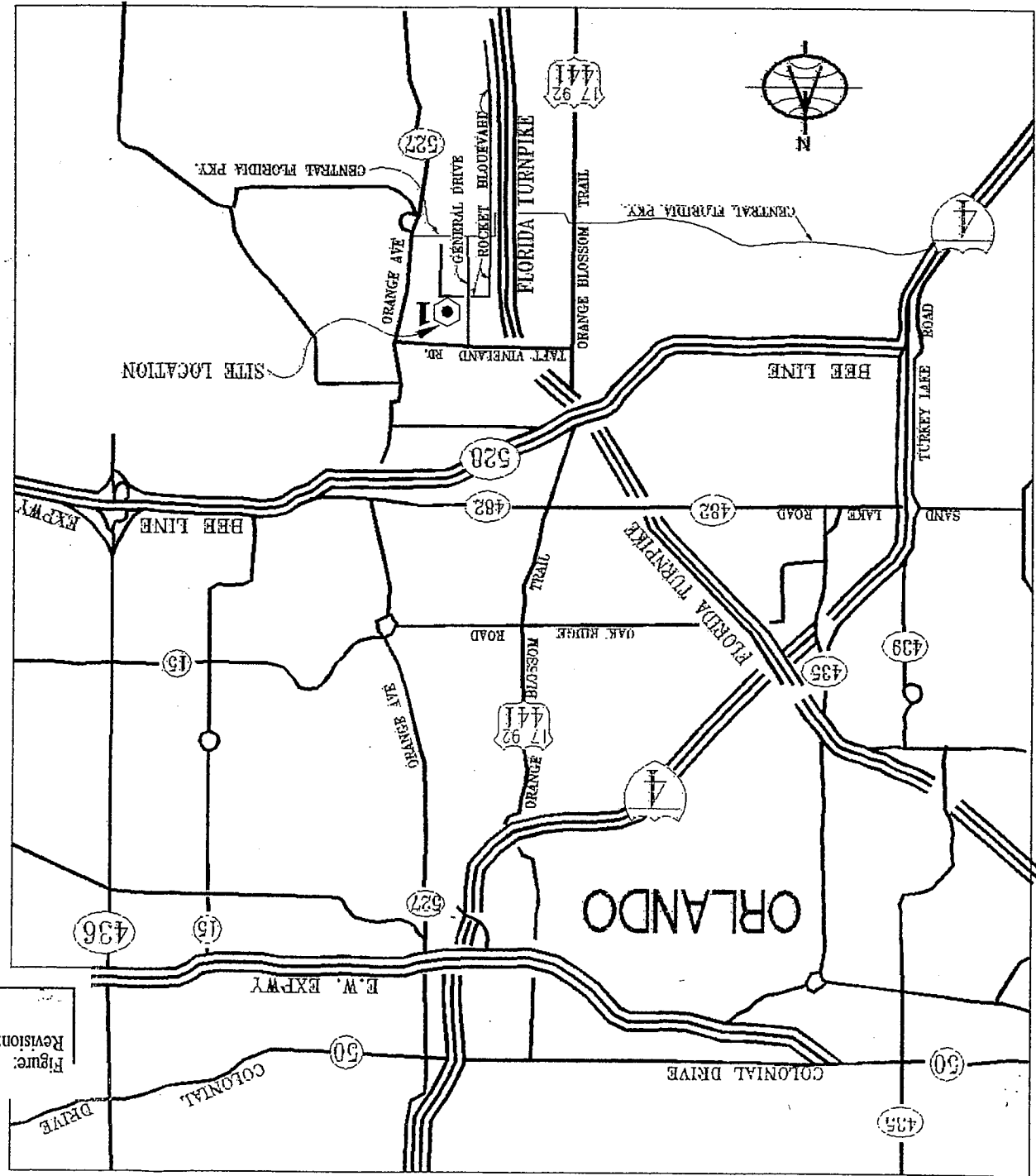


Figure: IIA.4b-1
Revision: 0

EMERGENCY SERVICE ORGANIZATIONS

PERMA-FIX OF ORLANDO

1- PERMA-FIX OF ORLANDO

2- FIRE STATION # 51

3- FIRE STATION # 53

4- FIRE STATION # 54

5- FIRE STATION # 73

6- HAZARDOUS MATERIAL RESPONDS TEAM #60

7- ORLANDO REGIONAL MEDICAL CENTER - ORANGE

8- ORLANDO REGIONAL MEDICAL CENTER - SAND LAKE

LEGEND:

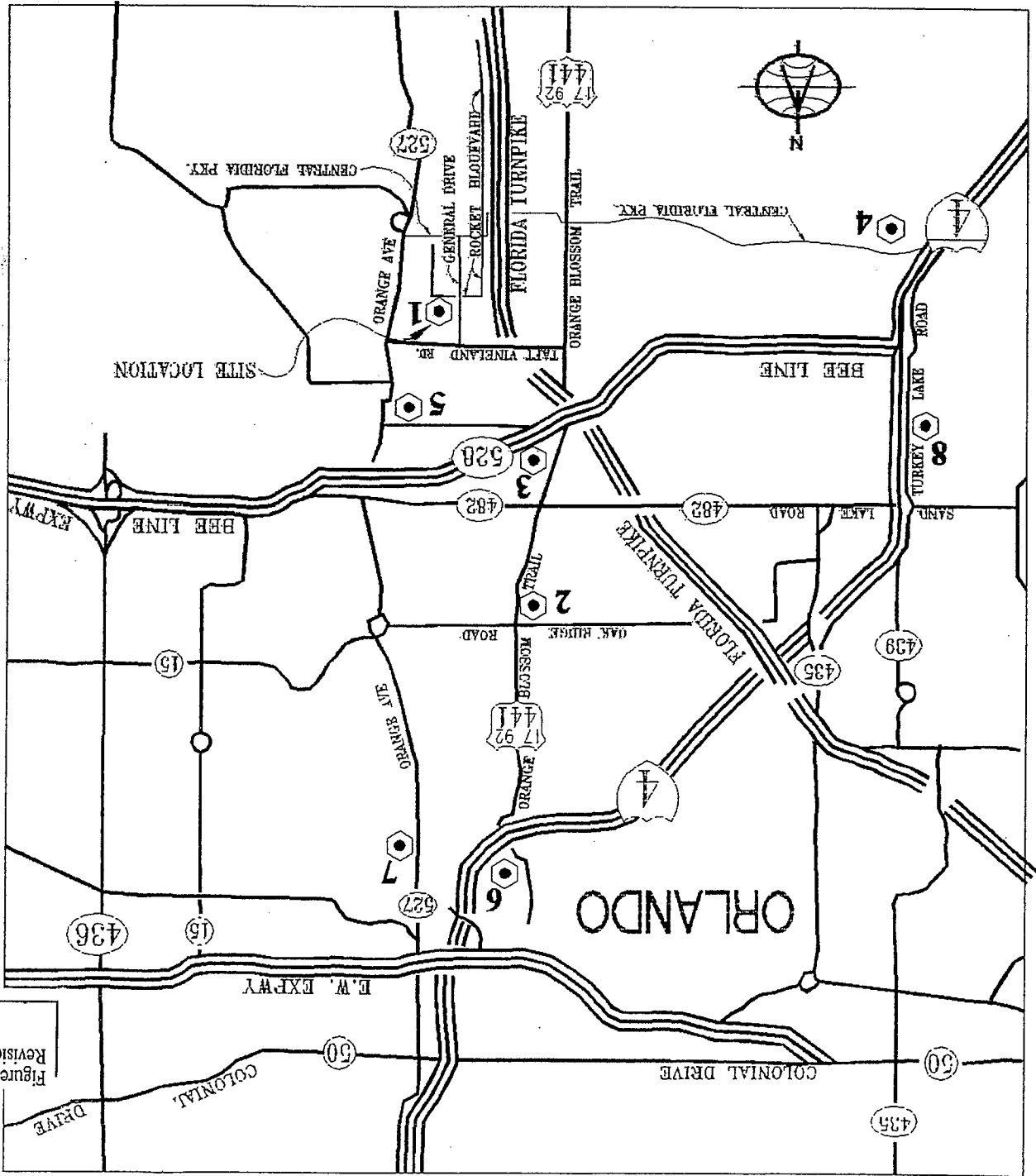


Figure: II.A.4-b-2
Revision: 0

10000 ROCKET BOULEVARD ORLANDO, FLORIDA	APPROVED BY	SCALE: N.T.S.	DATE: 4/20/95
DRAWN BY	REVISION SERVICE	DRAWING NUMBER	CCCC1195

FIGURE II.A.4.B.-3	SCALE: NOT TO SCALE	CHECKED BY: WKS	DATE DRAWN: 02-12-03	DRAWING #: II.A.4.B.-3	REVISION: 1
PERMA-FIX OF ORLANDO, INC. FACILITY LAYOUT					

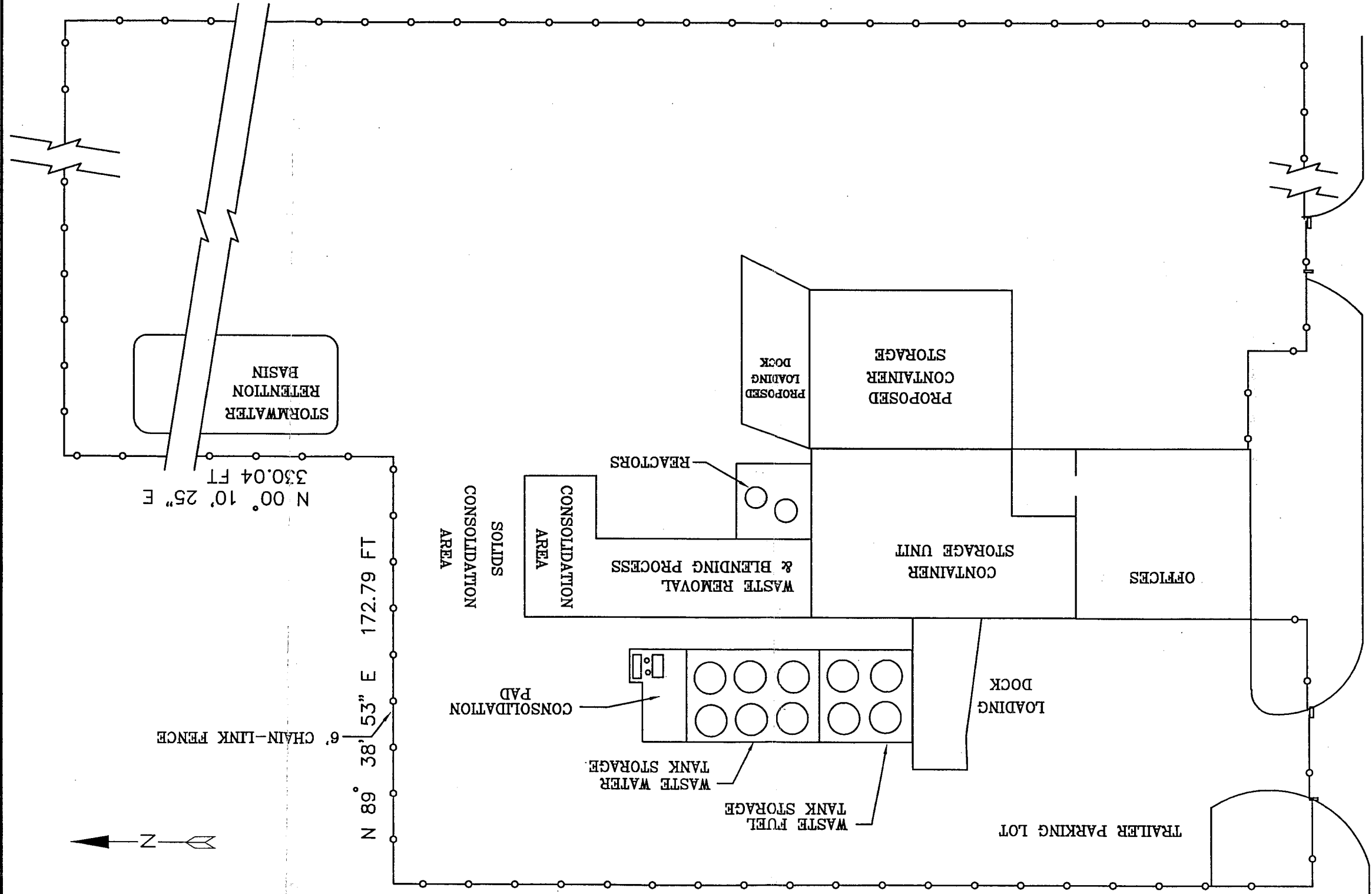
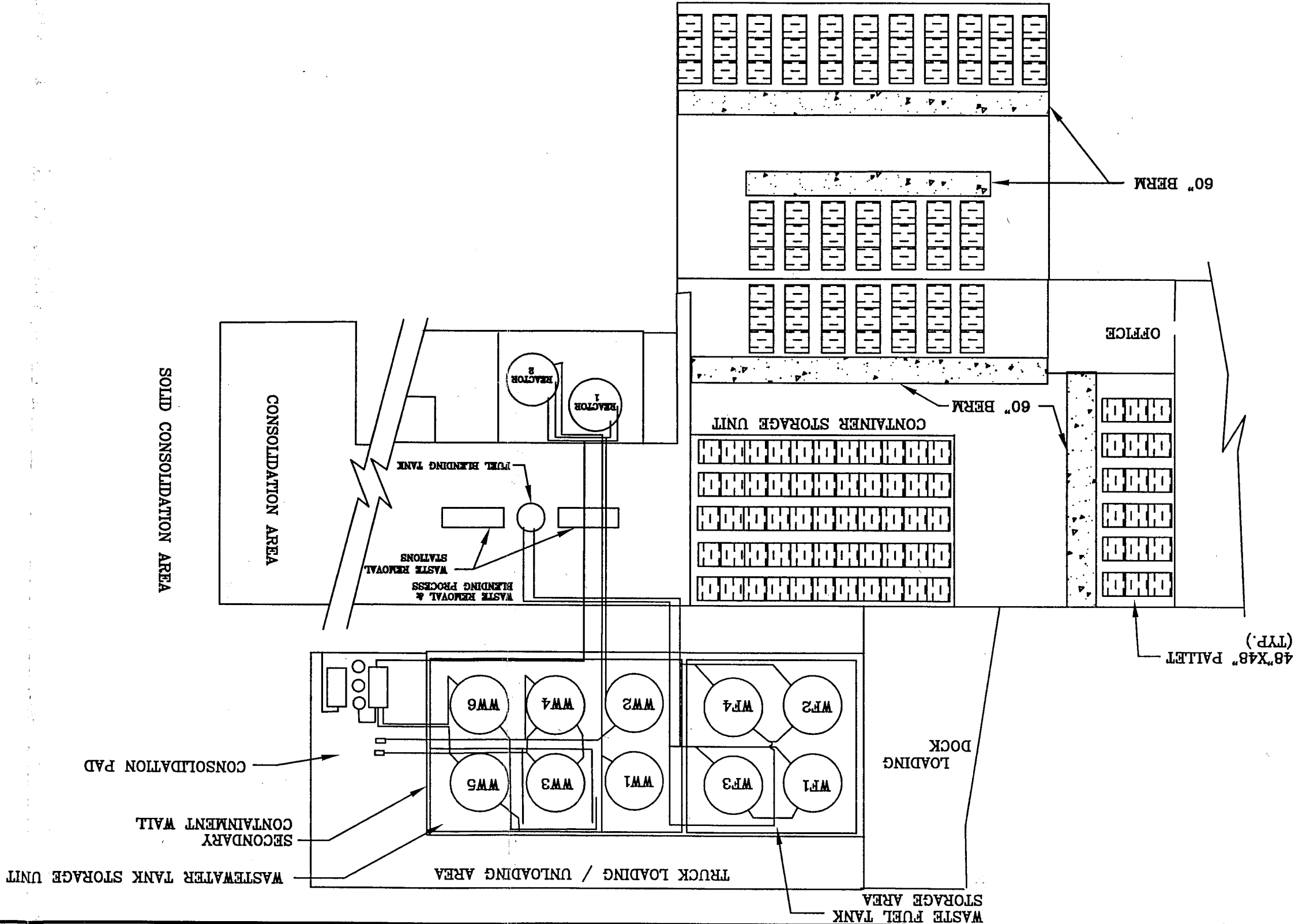
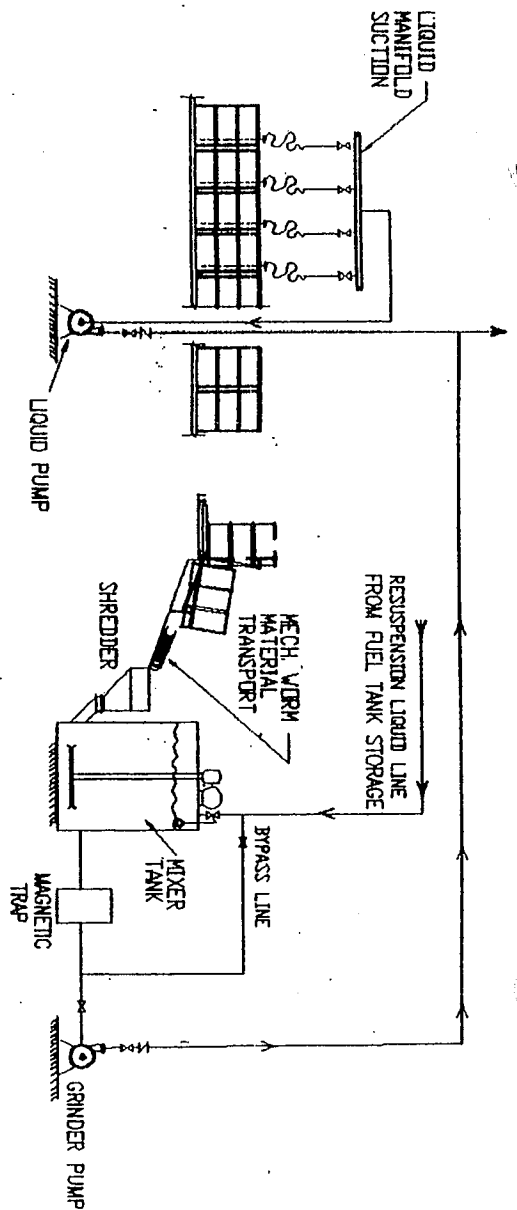


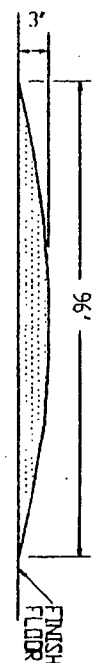
FIGURE IIA4.B-4	SCALE: NOT TO SCALE	PERMA-FLX OF ORLANDO, INC. CONTAINER STORAGE UNITS
REVISION: 1	DRAWING #: IIA4.B-4	CHECKED BY: MKS
	DATE DRAWN: 02-12-03	DRAWN BY: MKS



TO FUEL TANK STORAGE



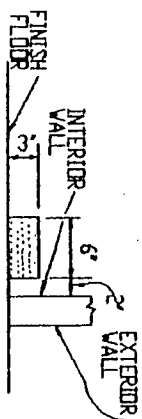
WASTE REMOVAL SYSTEM DIAGRAM
SCALE: NTS



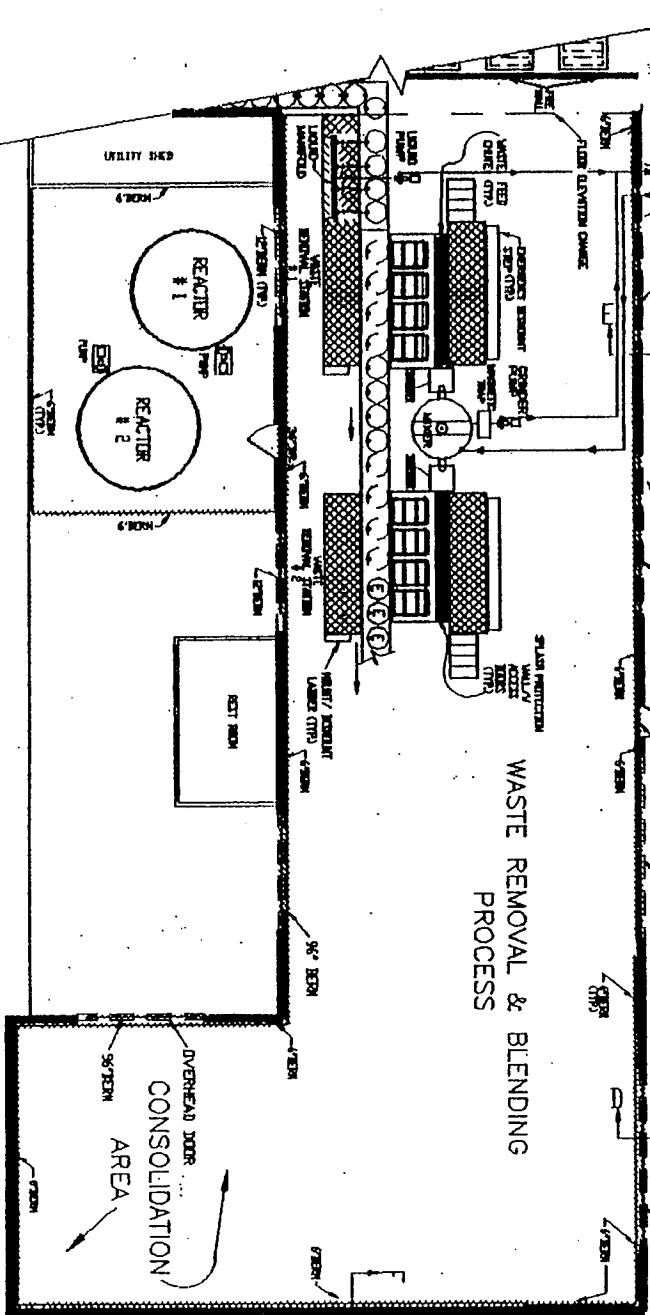
96" BERM SECTION "D-D"
SCALE: NTS



12" BERM SECTION "E-E"
SCALE: NTS



6" BERM SECTION "F-F"
SCALE: NTS



WASTE REMOVAL & BLENDING
PROCESS

WASTE REMOVAL & BLENDING PROCESS

FIGURE: II.A.4.b-5
Revision: 0



REV	
CHEMICAL CONSERVATION CORPORATION	
10100 ROCKET BOULEVARD ORLANDO FLORIDA	
SCALE: N.T.S.	APPROVED BY
DATE: 10/31/95	DRAWN BY
	DRAWING NUMBER
	DATE: 10/31/95
	WATERS

WASTE FUEL TANK
STORAGE UNIT

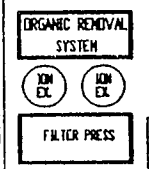
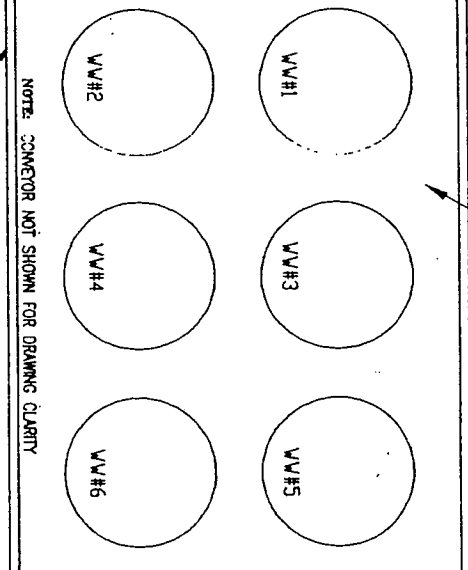
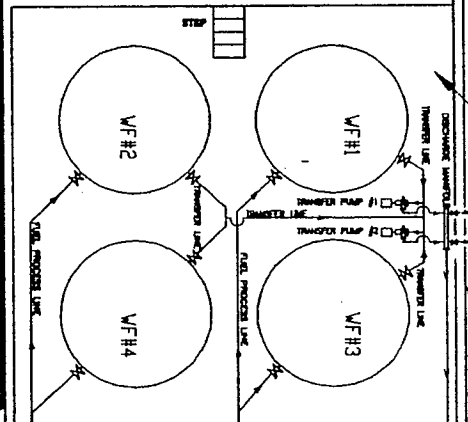
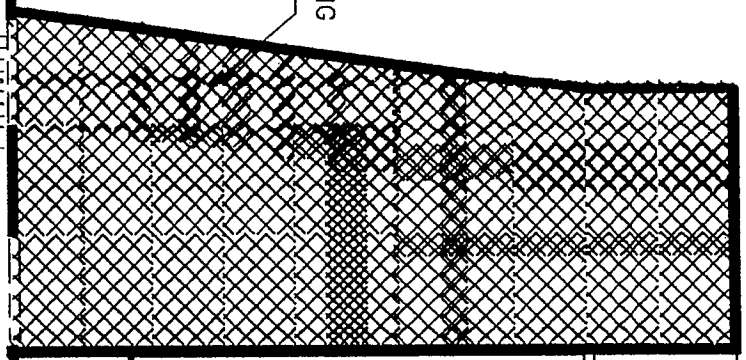
WASTEWATER TANK
STORAGE UNIT

TANKER LOADING/UNLOADING AREA

SECONDARY CONTAINMENT WALL (TYP)

ROLL OVER BERN

LOADING DOCK



RAMP DOWN

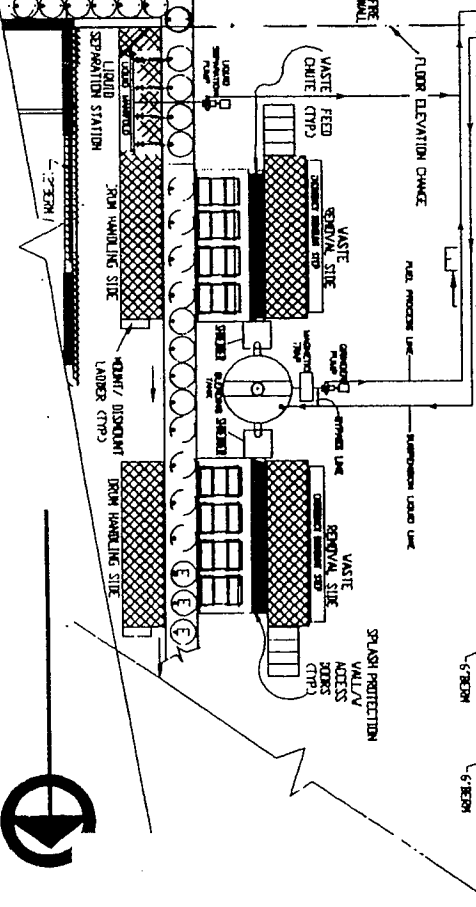
FORK LIFT R/W

CONTAINER STORAGE UNIT

FORK LIFT R/W

PLAN VIEW

WASTE FUEL BLENDING SYSTEM



REV	DESCRIPTION
1	ISSUED FOR CONSTRUCTION
2	REVISED PER COMMENTS
3	REVISED PER COMMENTS
4	REVISED PER COMMENTS
5	REVISED PER COMMENTS
6	REVISED PER COMMENTS
7	REVISED PER COMMENTS
8	REVISED PER COMMENTS
9	REVISED PER COMMENTS
10	REVISED PER COMMENTS
11	REVISED PER COMMENTS
12	REVISED PER COMMENTS
13	REVISED PER COMMENTS
14	REVISED PER COMMENTS
15	REVISED PER COMMENTS
16	REVISED PER COMMENTS
17	REVISED PER COMMENTS
18	REVISED PER COMMENTS
19	REVISED PER COMMENTS
20	REVISED PER COMMENTS
21	REVISED PER COMMENTS
22	REVISED PER COMMENTS
23	REVISED PER COMMENTS
24	REVISED PER COMMENTS
25	REVISED PER COMMENTS
26	REVISED PER COMMENTS
27	REVISED PER COMMENTS
28	REVISED PER COMMENTS
29	REVISED PER COMMENTS
30	REVISED PER COMMENTS
31	REVISED PER COMMENTS
32	REVISED PER COMMENTS
33	REVISED PER COMMENTS
34	REVISED PER COMMENTS
35	REVISED PER COMMENTS
36	REVISED PER COMMENTS
37	REVISED PER COMMENTS
38	REVISED PER COMMENTS
39	REVISED PER COMMENTS
40	REVISED PER COMMENTS
41	REVISED PER COMMENTS
42	REVISED PER COMMENTS
43	REVISED PER COMMENTS
44	REVISED PER COMMENTS
45	REVISED PER COMMENTS
46	REVISED PER COMMENTS
47	REVISED PER COMMENTS
48	REVISED PER COMMENTS
49	REVISED PER COMMENTS
50	REVISED PER COMMENTS
51	REVISED PER COMMENTS
52	REVISED PER COMMENTS
53	REVISED PER COMMENTS
54	REVISED PER COMMENTS
55	REVISED PER COMMENTS
56	REVISED PER COMMENTS
57	REVISED PER COMMENTS
58	REVISED PER COMMENTS
59	REVISED PER COMMENTS
60	REVISED PER COMMENTS
61	REVISED PER COMMENTS
62	REVISED PER COMMENTS
63	REVISED PER COMMENTS
64	REVISED PER COMMENTS
65	REVISED PER COMMENTS
66	REVISED PER COMMENTS
67	REVISED PER COMMENTS
68	REVISED PER COMMENTS
69	REVISED PER COMMENTS
70	REVISED PER COMMENTS
71	REVISED PER COMMENTS
72	REVISED PER COMMENTS
73	REVISED PER COMMENTS
74	REVISED PER COMMENTS
75	REVISED PER COMMENTS
76	REVISED PER COMMENTS
77	REVISED PER COMMENTS
78	REVISED PER COMMENTS
79	REVISED PER COMMENTS
80	REVISED PER COMMENTS
81	REVISED PER COMMENTS
82	REVISED PER COMMENTS
83	REVISED PER COMMENTS
84	REVISED PER COMMENTS
85	REVISED PER COMMENTS
86	REVISED PER COMMENTS
87	REVISED PER COMMENTS
88	REVISED PER COMMENTS
89	REVISED PER COMMENTS
90	REVISED PER COMMENTS
91	REVISED PER COMMENTS
92	REVISED PER COMMENTS
93	REVISED PER COMMENTS
94	REVISED PER COMMENTS
95	REVISED PER COMMENTS
96	REVISED PER COMMENTS
97	REVISED PER COMMENTS
98	REVISED PER COMMENTS
99	REVISED PER COMMENTS
100	REVISED PER COMMENTS

Figure: 11.A.4b-6
Revision: 0

WASTEWATER TREATMENT SYSTEM - PLAN VIEW

LEGEND

1. CORROSIVE LIQUID LINE
2. WASTEWATER LINE
3. CORROSIVE LIQUID PUMP
4. WASTEWATER PUMP
5. CORROSIVE LIQUID FILTER
6. WASTEWATER FILTER
7. CORROSIVE LIQUID TANK #1
8. CORROSIVE LIQUID TANK #2
9. WASTEWATER TANK #1
10. WASTEWATER TANK #2
11. PROCESS TANK #1
12. PROCESS TANK #2
13. CORROSIVE LIQUID TRANSFER PUMP
14. WASTEWATER TRANSFER PUMP
15. CORROSIVE LIQUID TRANSFER LINE
16. WASTEWATER TRANSFER LINE
17. TREATMENT TANK (REACTOR) #1
18. TREATMENT TANK (REACTOR) #2
19. TREATMENT PUMP #1
20. TREATMENT PUMP #2
21. TREATMENT LINE
22. FILTER PRESS
23. CONNECTION LINE
24. PARTICULATE FILTER
25. ION EXCHANGE TOWERS
26. ORGANIC REMOVAL SYSTEM
27. PROCESS LINE
28. WASTEWATER RETURN LINE
29. PROCESS RECIRCULATION LINE
30. WASTEWATER RECIRCULATION LINE
31. PROCESS PUMP #1
32. PROCESS PUMP #2
33. PROCESS BY-PASS LINE

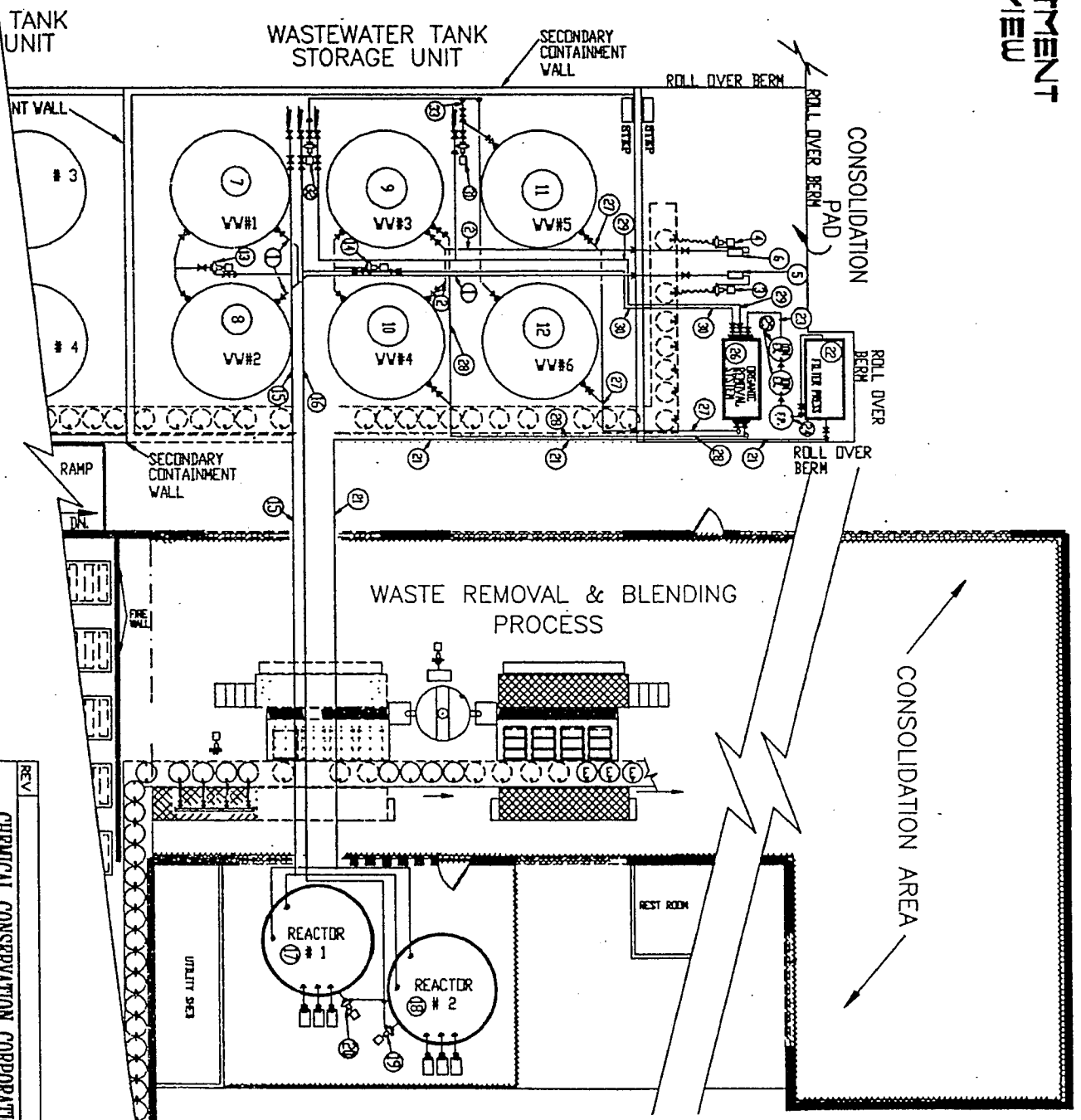


Figure: II.A.4.b-7
 Revision: 0
 Date: 02/25/2003

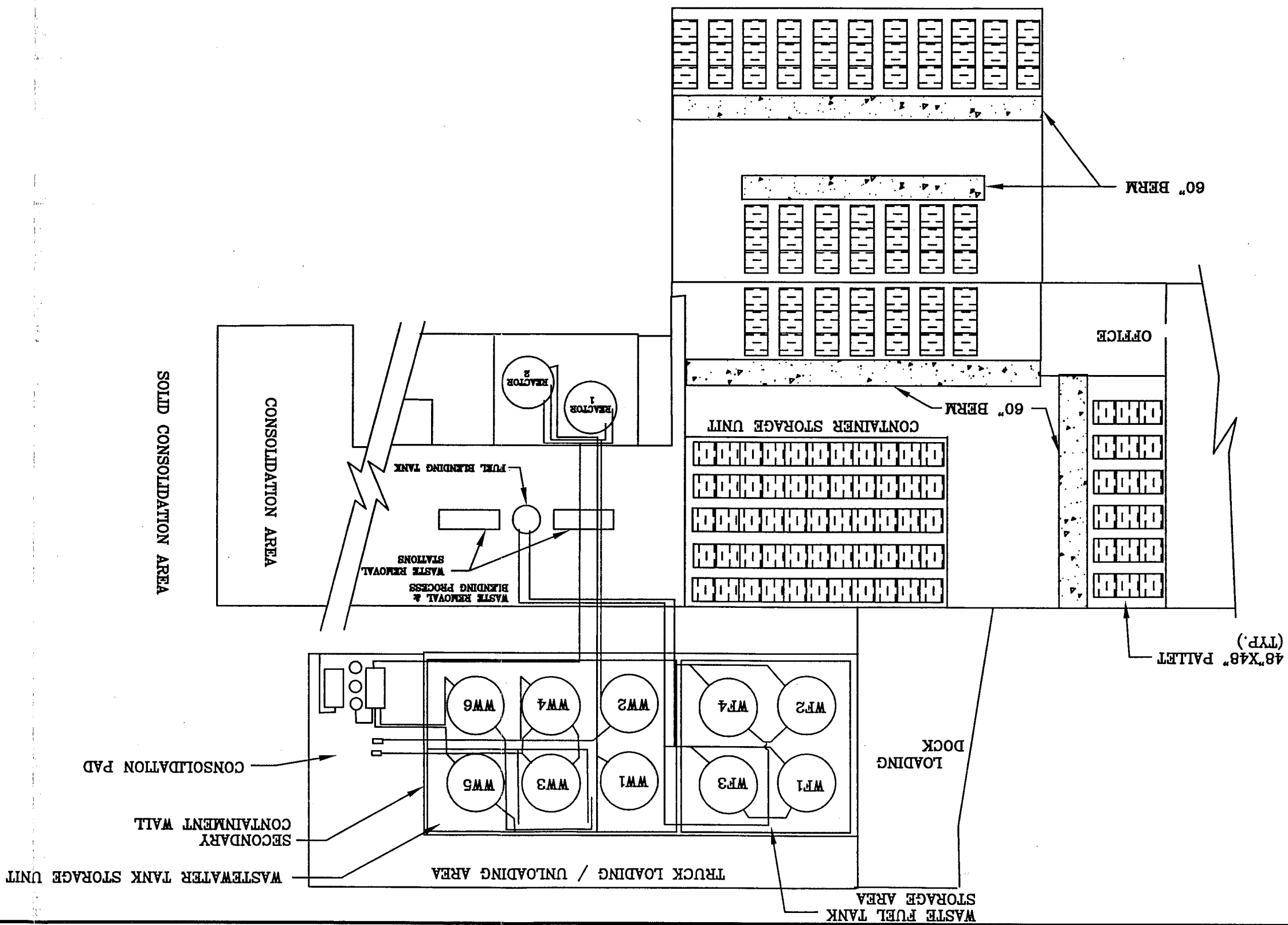
REV	
CHEMICAL CONSERVATION CORPORATION	
10100 ROCKET BOULEVARD ORLANDO FLORIDA	
SCALE: N.T.S.	APPROVED BY: [Signature]
DATE: 3/4/96	DRAWN BY: [Signature]
	DESIGNED BY: [Signature]
	DRAWING NUMBER: [Blank]

ENVIRONMENTAL ENGINEERS

SCHREIBER & YONLEY ASSOCIATES

FIGURE II.A.4.b.-8
SCALE: NOT TO SCALE

CHECKED BY:	DRAWN BY:	DATE DRAWN:	DRAWING #:	REVISION:
	WKS	02-12-03	II.A.4.b.-8	
PERMA-FLX OF ORLANDO, INC. FACILITY EQUIPMENT LAYOUT				



REVISED: 05-22-03	DRAWN BY: WKS	DATE DRAWN: 02-07-03	DRAWING #: II.A.4.b.-9	REVISION: 2
EMERGENCY EQUIPMENT LOCATION				
PERMA-FIX OF ORLANDO, INC.				
FIGURE II.A.4.b.-9		SCALE: NOT TO SCALE		

- LEGEND**
- ⊗ FIRE EXTINGUISHER 5 LBS.
 - ⊙ FIRE EXTINGUISHER 20 LBS.
 - ⊗ FIRE EXTINGUISHER 150 LBS.
 - ▽ SAFETY SHOWER
 - EYE WASHER
 - ⊗ SPILL CONTROL STATION
 - STRETCHER
 - ▨ EMERGENCY AND PERSONNEL SAFETY EQUIP. CABINET
 - H FIRE ALARM OPERATOR
 - ⊙ FIRE HYDRANT

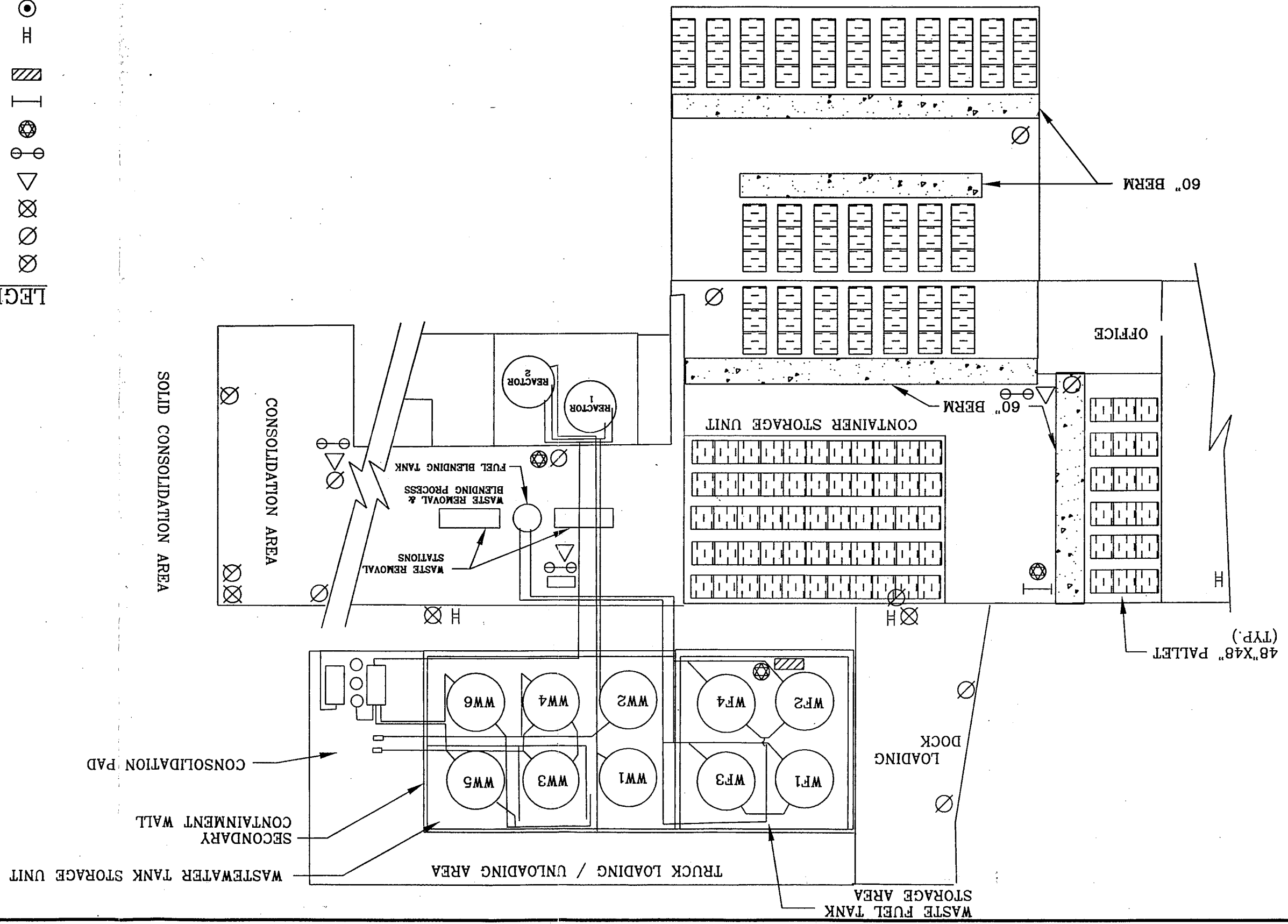
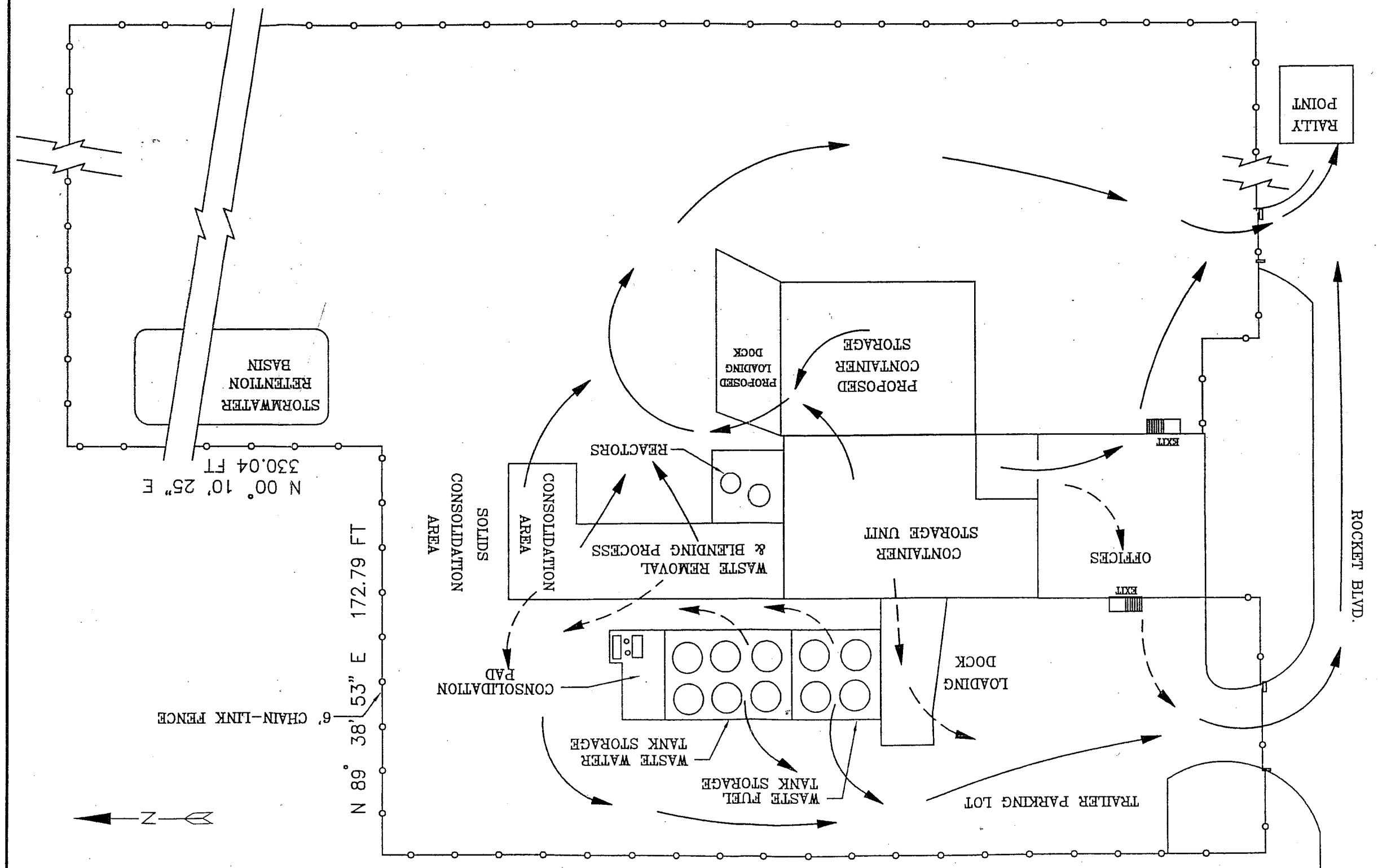


FIGURE II.A.4.B.-10	SCALE: NOT TO SCALE	REVISION# 1	CHECKED BY: WKS	DATE DRAWN: 02-12-03	DRAWING #: II.A.4.B.-10
PERMA-FIX OF ORLANDO, INC. EVACUATION ROUTES					



← PRIMARY ROUTE
 ← ALTERNATE ROUTE

