



ENVIRONMENTAL ENTERPRISES
OF FLORIDA, INC.

MICHELLE A. CHAMBERS
H R Director/OSHA Outreach Trainer
Cell (407) 466-7869
(407) 855-0141
Fax (407) 855-0354
E-Mail: hazmatfl@att.net
Web Site: www.eeflor.com

314-B Landstreet Road
Orlando, Florida 32824

162 Town Creek Rd.
Forsyth, GA 31029



RECEIVED

JUN 29 2009

Land Planning and Engineering

Stormwater Management

Drainage and Utilities

Environmental Permitting
Construction Administration

Project Management
Government Agency Liaison

Phase 1 ESA & Due Diligence

Water & Wastewater Treatment Facilities

Water/Sewer Utility Rates & Charges

Pumping Stations

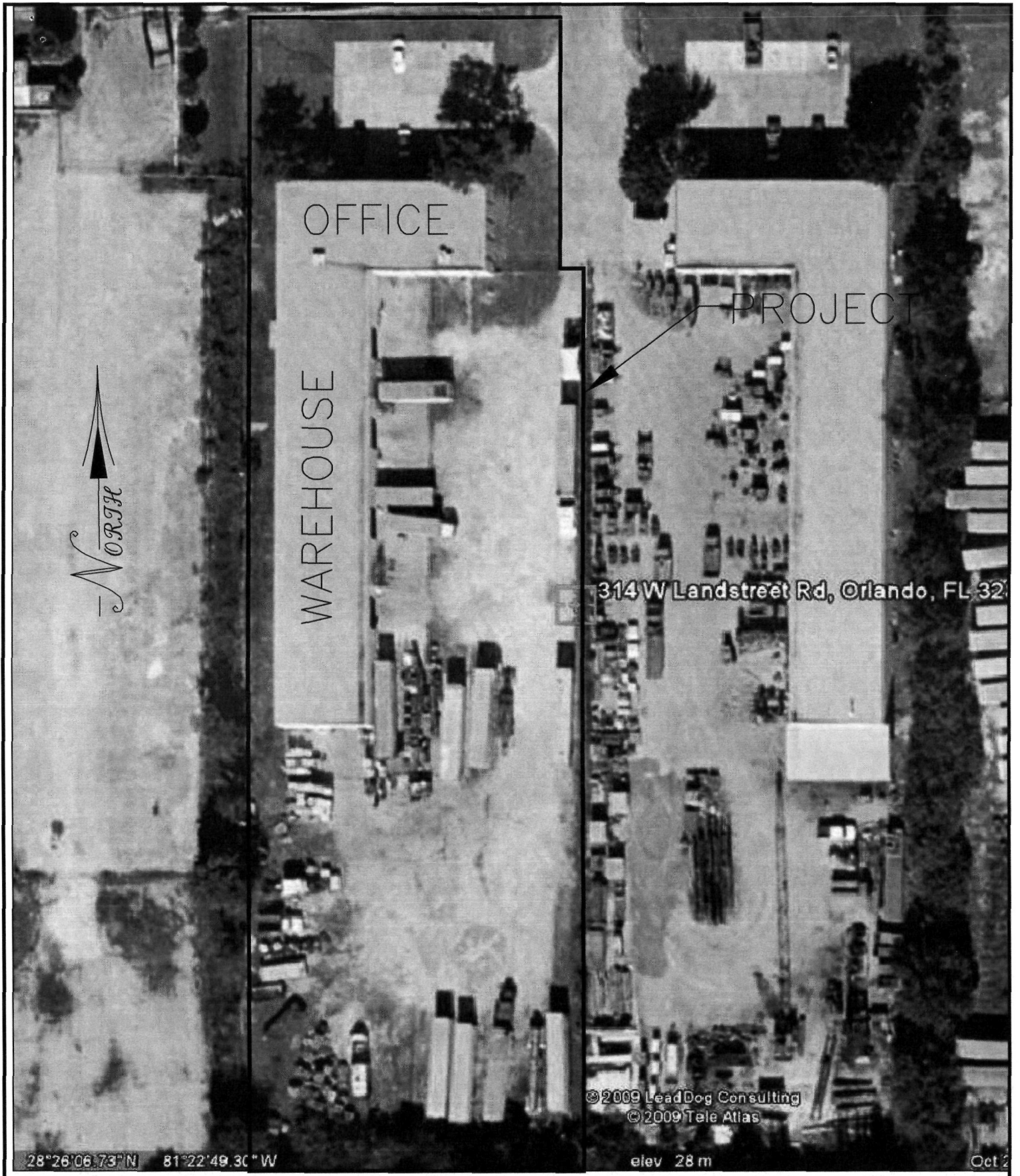
BRIEF GENERAL DESCRIPTION OF TRANSFER FACILITY OPERATIONS

A Transfer facility is operated as identified below:

| | |
|--------------------|--|
| Facility Name: | Environmental Enterprises of Florida, Inc. 314 B. Landstreet Road, Orlando, FL 32824 |
| County: | Orange |
| LAT/LOG: | 28° 26'07" N 81° 22' 50" W |
| EPA I.D. Number: | FLR000006353 |
| Permit # | |
| Permit Summary | The permit is for a hazardous waste transporter. The transporter collects hazardous and non-hazardous waste from various generators. The wastes are stored in sealed 55-gallon drums and 5-gallon containers, which the transporter picks up at the generator's site. Trucks and trailers are loaded with the wastes and the wastes are hauled to various permitted TSD facilities for final disposal. Wastes are temporarily stored on site for periods exceeding 24 hours but less than 10 days. The waste is never off-loaded at this site. |
| Facility Contacts: | Mr. Rondal Chambers, Operation Manager; Mr. Ismael A. Jusino, Environmental Coordinator, Ms. Michelle Chambers, Administrative Coordinator |

The facility conducts transfer facility operations involving hazardous waste and hazardous materials from off site waste generators in route to RCRA regulated disposal facilities, recovery facilities and other designated facilities nationwide.

Drawings from permit attached.



28°26'06.73" N 81°22'49.30" W

©2009 LeadDog Consulting
©2009 Tele Atlas

elev 28 m

Oct 2

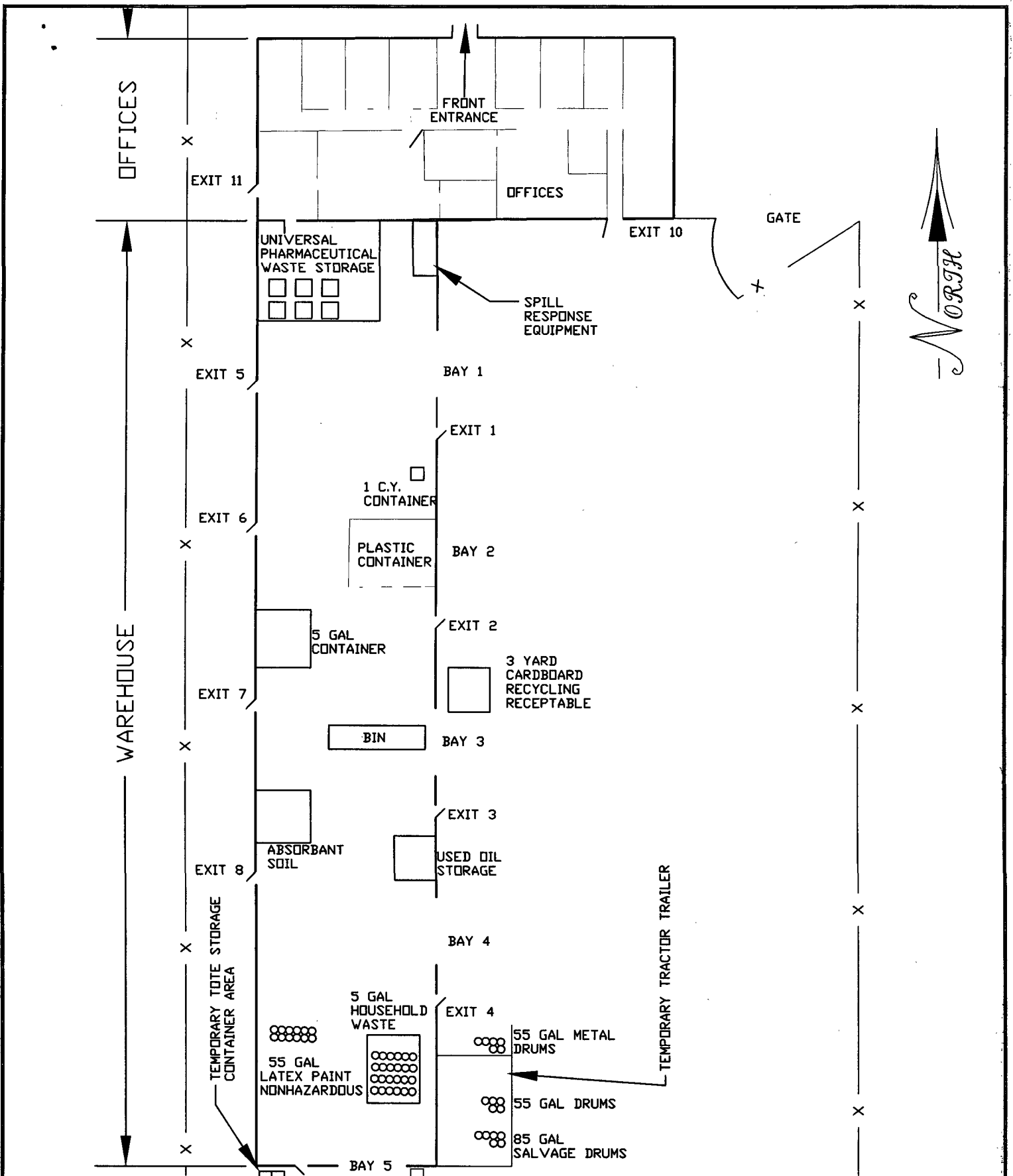


Excel Engineering
CONSULTANTS, L.L.C.
ENVIRONMENTAL & CIVIL ENGINEERS
122 WILSHIRE BOULEVARD
CASSELBERRY, FL 32707
TEL: (407) 260-2292 FAX: (407) 260-1193
CERTIFICATE OF AUTHORIZATION NO. 27541

EEFI
10-DAY HAZARDOUS WASTE
TRANSFER FACILITY

PROPERTY BOUNDARY LINE

| | | | | | |
|------------------------|---------------|------------|-------------|--------------|--------------|
| PROJECT: EEF01-0109 | SCALE: N.T.S. | DRAWN: JAC | CHECKED: JL | DATE: 6/4/09 | SHEET 1 OF 1 |
|------------------------|---------------|------------|-------------|--------------|--------------|



Excel Engineering
INCORPORATED
 ENVIRONMENTAL & CIVIL ENGINEERS
 122 WILSHIRE BOULEVARD
 CASSELBERRY, FL 32707
 TEL: (407) 260-2292 FAX: (407) 260-1193
 CERTIFICATE OF AUTHORIZATION NO. 27541

EEFI
 10-DAY HAZARDOUS WASTE
 TRANSFER FACILITY

WAREHOUSE
 STORAGE
 BUILDING

| | |
|--------------|------------|
| PROJECT: | EEF01-0109 |
| SCALE: | N.T.S. |
| DRAWN: | JAC |
| CHECKED: | JL |
| DATE: | 6/4/09 |
| SHEET 1 OF 1 | |

PROJECT:
 EEF01-0109

SCALE: N.T.S.

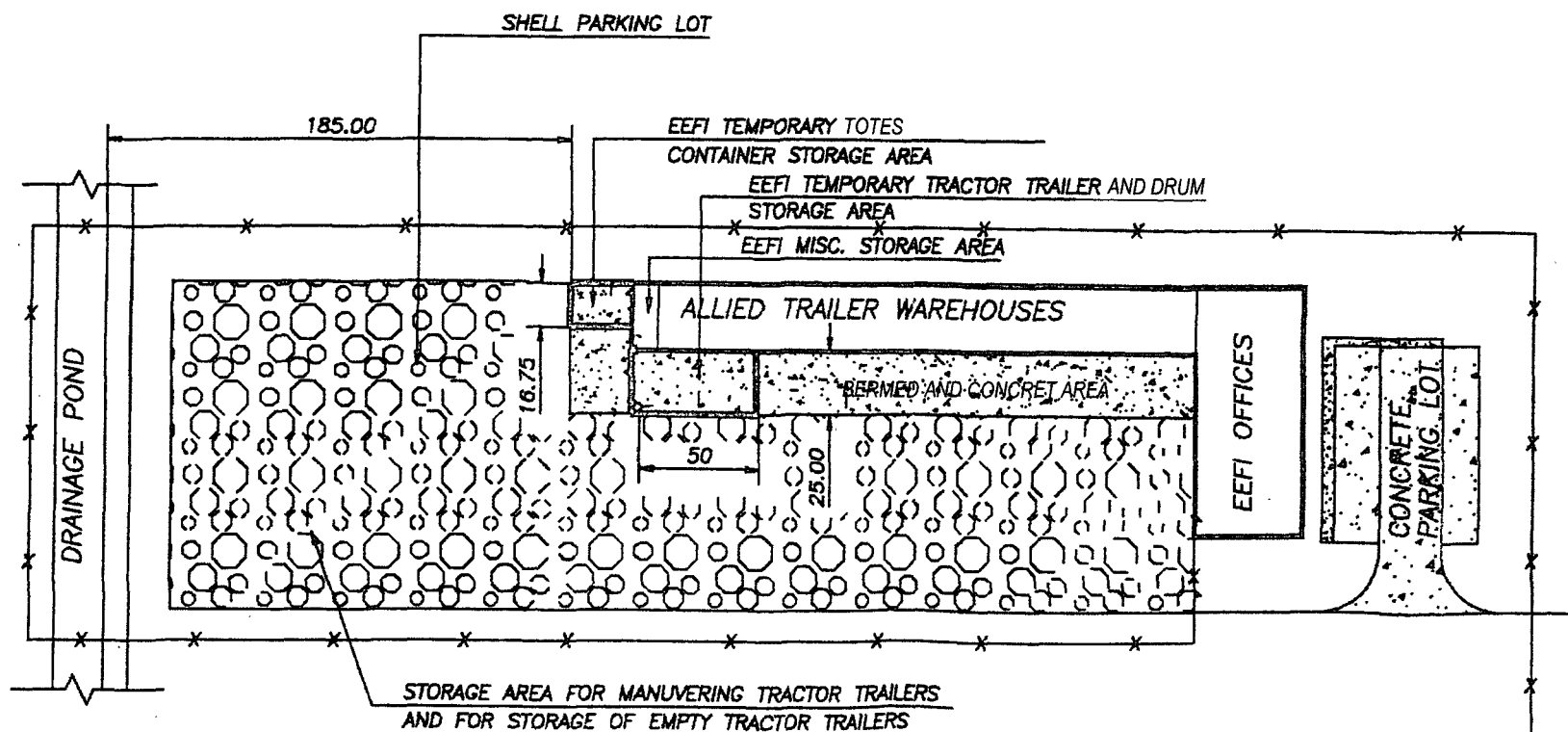
DRAWN: JAC

CHECKED: JL

DATE: 6/4/09

SHEET 1 OF 1

TYPICAL DETAIL



TRANSFER FACILITY NOTIFICATION FORM

This form must be completed as required in Florida Administrative Code Rule 62-730.171(3) by transfer facilities storing hazardous waste in accordance with Florida Administrative Code Rule 62-730.171. All information must be typed or printed clearly.

I. Transporters identification:

Company Name ENVIRONMENTAL ENTERPRISES OF FLORIDA, INC.

E.P.A.ID No. FLR000006353

Company Mailing Address 314-B LANDSTREET ROAD
ORLANDO, FLORIDA 32824

Principal Contact RONDAL G. CHAMBERS

Phone Number (407) 855-0141

II. Transfer Facility Identification:

Name of Facility ENVIRONMENTAL ENTERPRISES OF FLORIDA, INC.


Street Address 314-B LANDSTREET ROAD
ORLANDO, FLORIDA 32824

Latitude Section 2, Township 24 S Longitude Range 29 East

County Orange Storage Volume DO NOT STORE ANYTHING IN WAREHOUSE
TRANSFER FACILITY ONLY BECAUSE OF THE
III. Certification: "24" HOUR RULING. IN VANS, NO MORE THAN
300 DRUMS AT ONE TIME.

I certify under penalty of law that the above information is accurate and complete. As the owner or operator of the above-referenced hazardous waste transfer facility, I am aware that this facility must comply with the requirements of Florida Administrative Code Rule 62-730.171.

RONDAL G. CHAMBERS PRESIDENT
Print/Type Name Title

 6-26-09
Signature of Authorized Representative Date Signed



Land Planning and
Engineering

Stormwater
Management

Drainage and Utilities

Environmental Permitting
Construction Administration

Project Management
Government Agency Liaison

Phase 1 ESA & Due Diligence

Water & Wastewater
Treatment Facilities

Water/Sewer Utility
Rates & Charges

Pumping Stations

RECEIVED

JUN 29 2009

BY: [Signature]

Hazardous Waste Transfer Facility Closure Plan

**Environmental Enterprises of Florida, Inc.
314 B. Landstreet Road
Orlando, Florida**

**Prepared For:
Environmental Enterprises of Florida, Inc.
314 B Landstreet Road
Orlando, Florida 32824**

**Prepared by:
Excel Engineering Consultants, LLC
122 Wilshire Boulevard
Casselberry, FL 32707
CA #: 27541**

June 9, 2009

**Environmental Enterprises of Florida, Inc.
Hazardous Waste Transfer Facility
Closure Plan**

TABLE of CONTENTS

| | Page |
|--|------|
| I. Introduction | 1 |
| II. Project Description | 1 |
| III. Operations | 1 |
| IV. Closure Performance Standards | 2 |
| V. Closure Plan | 2 |
| • Expected year of Closure | 2 |
| • Estimate of Maximum Inventory | 2 |
| • Removal of Inventory | 2 |
| • Decontamination of the Facility | 2 |
| • Closure Schedule | 3 |
| • Amendment of the Closure Plan | 3 |
| • Notification of Partial or Final Closure | 3 |
| • Closure Cost Estimate | 4 |

APPENDIX:

- Appendix A: Facility Site Plan
- Appendix B: Property Boundary Site Plan

Environmental Enterprises of Florida, Inc.
Hazardous Waste Transfer Facility
Closure Plan

I. INTRODUCTION

The Closure Plan addresses operations that will be conducted to ensure that all wastes will be properly disposed of, and that all traces of contamination will be removed from the units where hazardous wastes were handled when the facility ceases its operation for an indefinite time and wishes not to be regulated under the Resource Conservation and Recovery Act (RCRA). Submittal of a Closure Plan in accordance with the provisions in 40 CFR Part 265.111, 265.112(c), 265.114 and 265.115 is mandated in the Florida Department of Environmental Protection (FDEP) 62-730.

II. PROJECT DESCRIPTION

Environmental Enterprises of Florida, Inc. (EEFI) is a hazardous waste transfer facility located at 314 B West Landstreet, Orlando, Florida 32824 in Section 2, Township 24 South, Range 29 East, Orange County. The project is located approximately 7,900 feet east of the intersection of US 441 and West Landstreet Road. The project is a permitted hazardous waste transfer facility in accordance with 62-730, FAC. The facility's EPA ID Number is FLR000006353. The facility site is approximately 600 feet by 150 feet with an approximate area of 90,000 square feet (2 acres). The site has one operations building, one temporary storage area for tractor-trailers, and parking area for the empty trailers and trucks. The temporary storage area is diked in order to contain any discharges (see attached plan).

The site's soils are classified by the United States Geological Survey to be predominantly Smyrna Fine Sands with inclusions of Bassinger sands and Pomello sands. Smyrna Fine Sands have a depth to the water table of approximately one to two feet. These soils are typically silty poorly drained soils.

III. OPERATIONS

The facility is a permitted hazardous waste transporter with an approved Contingency and Emergency Plan. The transporter collects hazardous and non-hazardous waste from various generators. The wastes are stored in sealed 55-gallon drums or 5-gallon containers, which the transporter picks up at the generator's site. Trucks and trailers are loaded with the wastes and the wastes are hauled to various permitted TSD facilities for final disposal. Wastes are temporarily stored on site for periods exceeding 24 hours but less than 10 days. The waste is never off-loaded at this site. Therefore there is never any contact between the drums and the site. The drums remain in the trailers until the trailer leaves the site. Furthermore, the drums are never opened on-site.

The trailers which have drums with hazardous waste materials will be parked in the areas designated on the site plan. These areas are paved with 6-inch thick concrete and bermed with a continuous asphalt berm. Any leaks that may occur will be contained within these designated areas. Any discharges will be remediated in accordance with EEFI's Emergency Plan on file with the FDEP. No trailers with hazardous waste drums will be stored outside the designated impervious and contained areas. The shell staging areas shown on the attached site plan are for storage of empty tractor-trailers and for maneuvering the tractor-trailers.

Clean drums are stored inside the miscellaneous storage area and temporary tractor-trailer storage area. These drums are delivered to the generators' location for use by the generator. None of the filled drums are off-loaded at this site. The drums remain in the trailers until final off-site disposal. There is no cleaning of drums, equipment or trailers at the facility. Any leaks or discharges are covered under the approved emergency and contingency plan and the transporter will follow the approved plans in the event when a leak or discharge occurs.

IV. CLOSURE PERFORMANCE STANDARD

Upon final closure of the facility, Environmental Enterprises of Florida, Inc. plans to remove all the waste in storage at that time, conduct a facility inspection to determine if there are any areas which require cleanup and clean any areas that may show signs of contamination. Since the facility does not off load any drums from the trailers, there is no drum storage area. Additionally there is no cleaning of drums, trailers or equipment at the facility. Therefore there are no specific areas to decontaminate.

V. CLOSURE PLAN

Expected Year of Closure

This facility is expected to operate for twenty-five years from the start of the operation. Partial closure will not occur because the facility is too small for part of it to be isolated and still allow for the parking of the trailers.

Estimate of Maximum Inventory

The maximum amount of hazardous waste to be stored at this facility over the facility's 25 year life is expected to be approximately 4,787,500 gallons of liquid waste stored in 55 gallon drums and 36,250 cubic yards of solid waste stored in run-off bin containers and 1 c.y. bags.

Removal of Inventory

Inventory of the waste remains in the trailers until its final off-site disposal. The trailers along with the containerized hazardous waste inside the trailers will be moved to another permitted location or taken to its final destination at the time of closure. It appears most likely that the hazardous waste will be transported to the Perma Fix of South Georgia GAD093380814 located in Valdosta, Georgia. However, it may also be transferred to other permitted TSD facilities which EEFI Utilizes. This will be determined at time of closure. Attached please find the TSDf that EEFI currently take the hazardous waste materials to.

Decontamination of the Facility

Since there is no off loading of drums at the facility there will not be any specific areas to decontaminate at closure. Leaks and discharges that occur during the operation of the facility are covered under the approved Contingency and Emergency Plan. A site inspection will be performed to determine if there are any areas, which require cleaning. This will be accomplished in a manner approved by the FDEP. Any areas that have hazardous waste spills will be handled in accordance with the facility's Emergency Plan on file at the FDEP.

Any contaminated soils will be excavated and stored in drums for off-site disposal at a permitted hazardous waste disposal facility.

Closure Schedule

Closure of the facility will be completed within a 30-day period in accordance with the following schedule:

| | |
|-------------------------------|---------|
| Inventory Removal..... | 5 days |
| Inspection of Facility..... | 5 days |
| Cleanup..... | 5 days |
| Certification of Closure..... | 15 days |

Amendment of the Closure Plan

The facility will submit a written notification to the regulating agency whenever changes are needed or occur at the facility that affect the closure plan. The notification will contain an amendment to the closure plan reflecting modifications needed because of changes at the facility. The written notification will be submitted whenever of the following occurs:

A. Changes in operating plans or facility design affect the closure plan

1. There is a change in the expected year of closure.
2. Changes in operating plans or facility design affect the closure plan, or
3. Partial or final closure activities are conducted and unexpected events require a modification of the approved closure plans.
4. The facility will submit the written notification for approval at least 60 days prior to the proposed changes, or no later than 60 days after an unexpected event has occurred that forces changes at the facility, which affect the closure plan.
5. The facility with an approved closure plan will submit the modified plan to the Regional Administrator at least 60 days prior to the proposed change in facility design or operation, or no more than 60 days after an unexpected event has occurred which has affected the closure plan. If an unexpected event has occurred during the partial or final closure period, the facility will submit the modified plan no more than 30 days after the unexpected event.
6. The Regional Administrator may request modifications to the plan under the conditions described in condition 1-3 of this section. The facility with an approved closure plan will need to submit the modified plan within 60 days of the request from the Regional Administrator, or within 30 days if the unexpected event occurs during partial or final closure.

B. Notification of Final Closure

1. The facility will notify the regulating agency in writing at least 45 days prior to the date on which it expects to begin partial or final closure at the facility.
2. The date when the facility "expects to begin closure" will be within 30 days after the date on which any hazardous waste management unit receives the known final volume of hazardous wastes, or, if there is a reasonable possibility that the hazardous waste management unit will receive additional hazardous wastes, no later than one year after the date on which the unit received the most recent volume of hazardous waste. If the owner or operator of a hazardous waste management unit can

demonstrate to the Regional Administrator that the hazardous waste management unit or facility has the capacity to receive additional hazardous wastes and he has taken, and will continue to take, all steps to prevent threats to human health and the environment, including compliance with all interim status requirements, the Regional Administrator may approve an extension to this one-year limit.

3. The facility will submit the closure plan to the Regional Administrator no later than 15 days after:
 - (i) Termination of interim status except when a permit is issued simultaneously with termination of interim status; or
 - (ii) Issuance of a judicial decree or final order under section 3008 of RCRA to cease receiving hazardous wastes or close.

4. The Regional Administrator will provide the facility and the public, through a newspaper notice, the opportunity to submit written comments on the plan and request modifications to the plan no later than 30 days from the date of the notice. He will also, in response to a request or at his own discretion, hold a public hearing whenever such a hearing might clarify one or more issues concerning a closure plan. The Regional Administrator will give public notice of the hearing at least 30 days before it occurs. (Public notice of the hearing may be given at the same time as notice of the opportunity for the public to submit written comments, and the two notices may be combined.) The Regional Administrator will approve, modify, or disapprove the plan within 90 days of its receipt. If the Regional Administrator does not approve the plan he shall provide the facility with a detailed written statement of reasons for the refusal and the facility will modify the plan or submit a new plan for approval within 30 days after receiving such written statement. The Regional Administrator will approve or modify this plan in writing within 60 days. If the Regional Administrator modifies the plan, this modified plan becomes the approved closure plan. A copy of the modified plan with a detailed statement of reasons for the modifications will be mailed to facility.

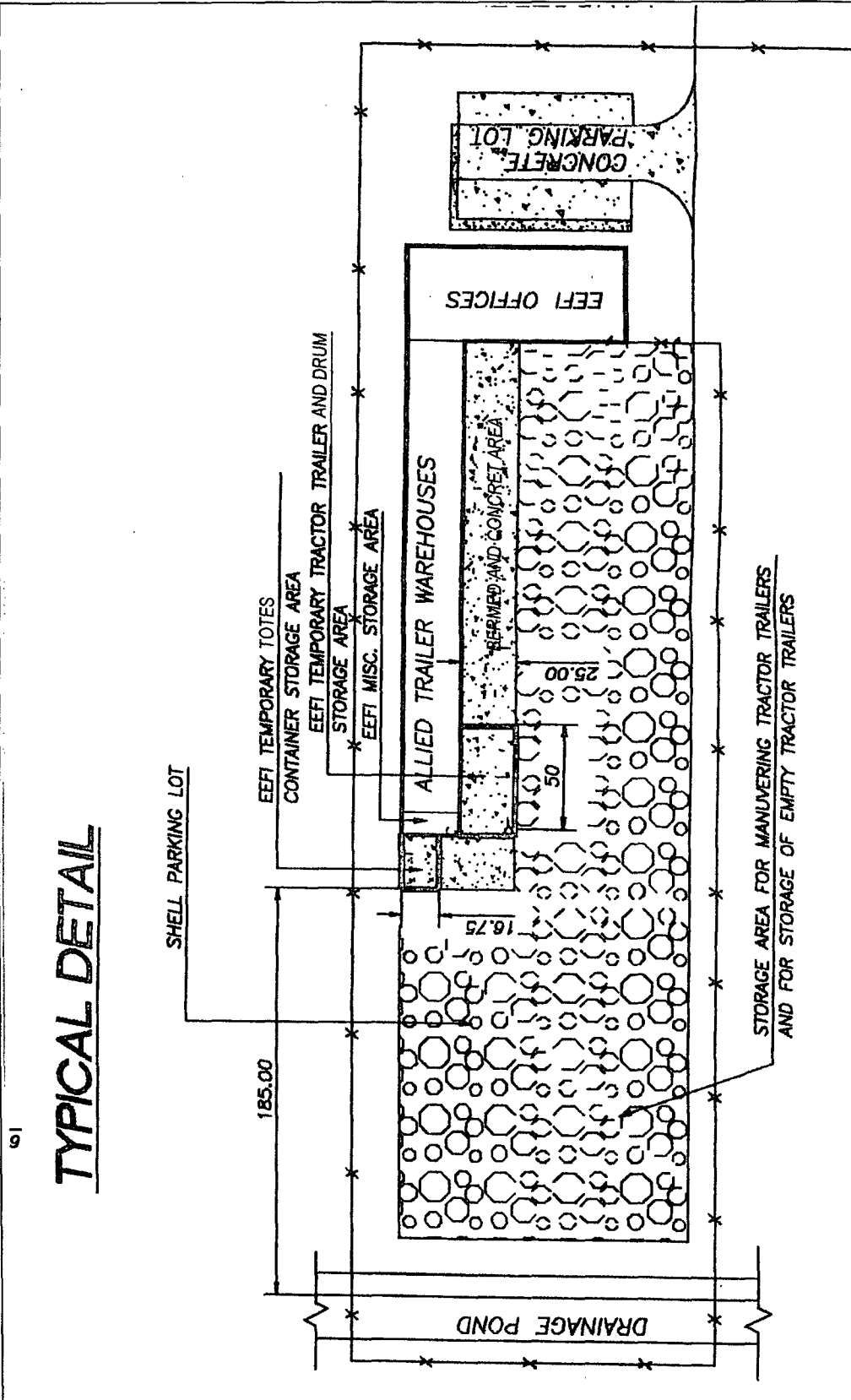
Closure Cost Estimate

| | |
|--------------------------|------------------|
| Inventory Removal: | \$500.00 |
| Inspection of Facility: | \$300.00 |
| Cleanup (contingency) | \$1,000.00 |
| Certification of Closure | \$500.00 |
| Subtotal: | <hr/> \$2,300.00 |
| Administrative Costs | \$500.00 |
| Total: | <hr/> \$2,800.00 |

APPENDIX A

FACILITY SITE PLAN

TYPICAL DETAIL



Excel Engineering
 ENVIRONMENTAL & CIVIL ENGINEERS
 122 WILSHIRE BOULEVARD
 CASSELBERRY, FL 32707
 TEL: (407) 260-2292 FAX: (407) 260-1193
 CERTIFICATE OF AUTHORIZATION NO. 27541

EEFI
 10-Day HAZARDOUS WASTE
 TRANSFER FACILITY

SITE PLAN

PROJECT:
 EEF01-0109
 SCALE: N.T.S.
 DRAWN: JAC
 CHECKED: JL
 DATE: 6/4/09
 SHEET 1 OF 1

TSDF Details

Wednesday, June 03, 2009 2:16PM

COMPANY INFORMATION

TSDF
DETREX CORPORATION

EPA ID #
NCD049773245

Address
3114 CULLMAN AVENUE

City
CHARLOTTE

State
NC

Zip Code
28206

County
MECKLENBURG

Country
USA

Web Address

CONTACT INFORMATION

| Name | Title | Phone | Fax | Pager/Cell | Email |
|----------------|------------------------|--------------|--------------|------------|-------------------|
| JASON RIDENOUR | Administrative Assistr | 704-372-9280 | 704-347-3711 | | JRIDENOUR@PCT.COM |

ID NUMBERS

NAISC Code

SIC Code

Company ID

LOCATION

Longitude
Degrees
Minutes
Seconds
East West

Latitude
Degrees
Minutes
Seconds
North South

NOTES

BACK UP TSDF
MATERIALS TAKEN ARE AS FOLLOWS

MIXED MEDIA/DEBRIS/DEVICES;ORGANIC LIQUIDS

TSDF Details

Wednesday, June 03, 2009 2:25PM

COMPANY INFORMATION

TSDF
ENVIRITE OF OHIO, INC.

EPA ID #
OHD980568992

Address
2050 CENTRAL AVENUE S.E.

City
CANTON

State
OH

Zip Code
44707

County
STARK

Country
USA

Web Address
WWW.ENVIRITE.COM

CONTACT INFORMATION

| Name | Type | Phone | Fax | Pager Cell | Email |
|----------------|------------------------|--------------|--------------|------------|-------------------------|
| PHIL LONG | Lab Technician | 330-456-6238 | 330-456-6226 | | PLONG@ENVIRITE.COM |
| JOHN MCDONALD | Lab Technician | 330-456-6238 | 330-454-6064 | | JMCDONALD.@ENVIRITE.COM |
| CHARLIE KRAMER | Administrative Assista | 330-456-6238 | 330-456-2801 | | |
| RICHARD | Sales | 330-417-3152 | 330-456-2801 | | |

ID NUMBERS

NAISC Code
562211

SIC Code

Company ID

LOCATION

Longitude

Degrees

Minutes

Seconds

East West

Latitude

Degrees

Minutes

Seconds

North South

NOTES

MATERIALS TAKEN ARE AS FOLLOWS

1. F006 SLUDGE
2. F006 WASTE WATER
3. CORROSIVE MATERIALS
4. HEAVY METALS

TSDF Details

Wednesday, June 03, 2009 2:33PM

COMPANY INFORMATION

TSDF ENVIRONMENTAL ENTERPRISES INC. EPA ID # OHD083377010

Address
4650 SPRING GROVE AVENUE

City CINCINNATI State OH Zip Code 45232

County HAMILTON Country USA

Web Address

CONTACT INFORMATION

| Name | Title | Phone | Fax | Pager/Cell | Email |
|-----------------|----------------|--------------|--------------|------------|-------|
| DAN MCCABE | President | 513-541-1823 | 513-541-5240 | | |
| WARREN TAYLOR | Lab Technician | 513-541-1823 | 513-541-5240 | | |
| PATRICK MCNAMEE | Lab Technician | 513-541-1823 | 541-513-5240 | | |
| GREG SMITH | Lab Technician | 513-541-1823 | 513-541-5240 | | |

ID NUMBERS

NAISC Code 562211 SIC Code Company ID

LOCATION

Longitude Degrees Minutes Seconds East West
Latitude Degrees Minutes Seconds North South

NOTES

MATERIALS TAKEN ARE AS FOLLOWS:

HAZARDOUS MATERIALS (BULKED, LAB PACKED, LOOSE PACKS)

1. FLAMMABLES
2. CORROSIVES
3. TOXICS
4. OXIDIZERS
5. HEAVY METALS

TSDF Details

Wednesday, June 03, 2009 2:38PM

COMPANY INFORMATION

TSDF EPA ID #
EWS ALABAMA, INC. ALD981020894

Address
402 WEBSTER CHAPEL ROAD

City State **Zip Code**
GLENCOE AL 35905

County **Country**
ETOWAH USA

Web Address

CONTACT INFORMATION

| Name | Title | Phone | Fax | Work Cell | Email |
|------------|-----------------------|--------------|--------------|-----------|-------|
| AMY LLOYD | Administrative Assist | 256-492-8340 | 256-492-1581 | | |
| SHERRY HUT | Administrative Assist | 256-492-8340 | 256-492-1581 | | |

ID NUMBERS

NAISC Code **SIC Code** **Company ID**
562211 2869

LOCATION

Longitude **Latitude**
Degrees Degrees
Minutes Minutes
Seconds Seconds
East West North South

NOTES

BACK UP TSDF

HAZARDOUS MATERIALS TAKEN ARE AS FOLLOWS:

1. FLAMMABLES
2. CORROSIVES
3. TOXICS
4. OXIDIZERS

TSDF Details

Wednesday, June 03, 2009 2:44PM

COMPANY INFORMATION

TSDF
PERMA-FIX OF SOUTH GEORGIA

EPA ID #
GAD093380814

Address
1612 JAMES P. RODGERS CIRCLE

City VALDOSTA **State** GA **Zip Code** 31801

County LOWNDES **Country** USA

Web Address
PERMA-FIX.COM

CONTACT INFORMATION

| Name | Title | Phone | Fax | Pager/Cell | Email |
|----------------|---------|--------------|--------------|------------|------------------------|
| LASON KIRKLAND | Manager | 229-244-0474 | 229-333-0328 | | LKIRKLAND@PERM-FIX.NET |

ID NUMBERS

NAISC Code 32511 **SIC Code** 2869 **Company ID** PERM01

LOCATION

Longitude **Latitude**
Degrees -83 Degrees 30
Minutes 27 Minutes 79
Seconds 83 Seconds 78
East West North South

NOTES

HAZARDOUS MATERIALS TAKEN ARE AS FOLLOWS:

1. FLAMMABLES
2. CORROSIVES
3. OXIDIZERS
4. TOXICS
5. CHEMO WASTE

TSDF Details

Wednesday, June 03, 2009 2:53PM

COMPANY INFORMATION

TSDF
PHOTOGRAPHIC WASTE CONTROL
INC
Address
1943 HIGH STREET

EPA ID #
FLD984229609

City
LONGWOOD

State
FL

Zip Code
32750

County
SEMINOLE

Country
USA

Web Address

CONTACT INFORMATION

| Name | Type | Phone | Fax | Home/Cell | Email |
|------------|------|--------------|--------------|-----------|-------|
| BOB AHMADI | | 407-328-9651 | 407-328-7158 | | |

ID NUMBERS

NAISC Code
562112

SIC Code

Company ID

LOCATION

Longitude
Degrees
Minutes
Seconds
East West

Latitude
Degrees
Minutes
Seconds
North South

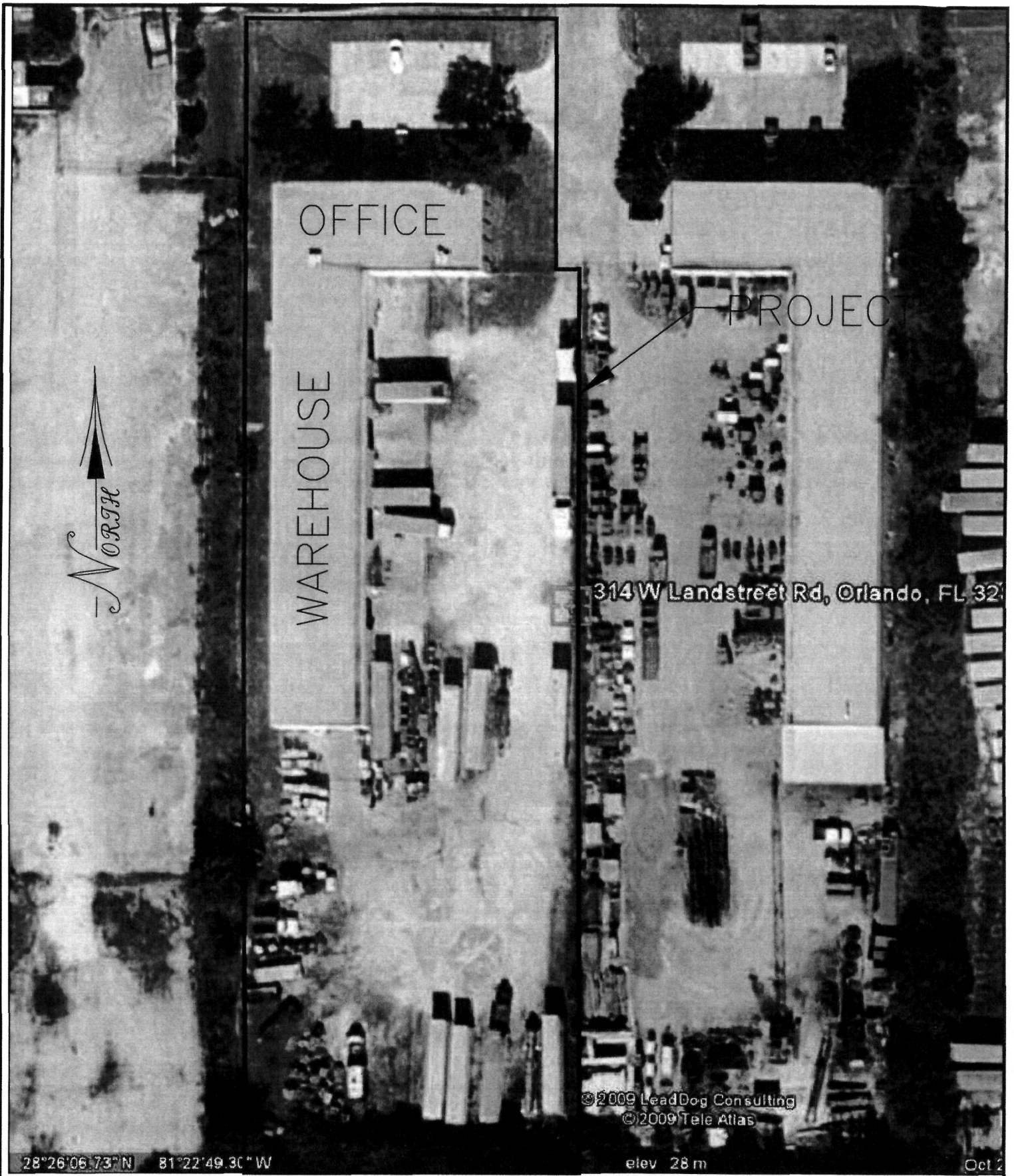
NOTES

HAZARDOUS MATERIALS FOR RECYCLE TAKEN ARE

1. FIXER
2. DEVELOPER
3. AMALGAM

APPENDIX B

PROPERTY BOUNDARY SITE PLAN



28°26'06.73"N 81°22'49.30" W

elev 28 m

Oct 2

©2009 LeadDog Consulting
©2009 Tele Atlas

Excel Engineering
 ENVIRONMENTAL & CIVIL ENGINEERS
 122 WILSHIRE BOULEVARD
 CASSELBERRY, FL 32707
 TEL: (407) 260-2292 FAX: (407) 260-1193
 CERTIFICATE OF AUTHORIZATION NO. 27541

EEFI
 10-DAY HAZARDOUS WASTE
 TRANSFER FACILITY

PROPERTY BOUNDRY LINE

| | | | | | |
|------------------------|---------------|------------|-------------|--------------|--------------|
| PROJECT: EEF01-0109 | SCALE: N.T.S. | DRAWN: JAC | CHECKED: JL | DATE: 6/4/09 | SHEET 1 OF 1 |
|------------------------|---------------|------------|-------------|--------------|--------------|



Land Planning and
Engineering

Stormwater
Management

Drainage and Utilities

Environmental Permitting
Construction Administration

Project Management
Government Agency Liaison

Phase 1 ESA & Due Diligence

Water & Wastewater
Treatment Facilities

Water/Sewer Utility
Rates & Charges

Pumping Stations

JUN 29 2009

BY: [Signature]

Contingency Plan and Emergency Procedures

**Environmental Enterprises of Florida, Inc.
314 B. Landstreet Road
Orlando, Florida**

**Prepared For:
Environmental Enterprises of Florida, Inc.
314 B Landstreet Road
Orlando, Florida 32824**

**Prepared by:
Excel Engineering Consultants, LLC
122 Wilshire Boulevard
Casselberry, FL 32707
CA #: 27541**

June 9, 2009

Environmental Enterprises of Florida, Inc.
Contingency Plan and Emergency Procedures

Table of Contents

| | Page |
|---|------|
| 1.0. Purpose and Implementation of Contingency Plan | 1 |
| 2.0 Content of Contingency Plan | 1 |
| 2.1. Driver Responsibilities | 2 |
| 2.2. Information for the Emergency Coordinators..... | 2 |
| 2.3. Emergency Coordinator Responsibilities | 2 |
| 2.4. Emergency Equipment | 3 |
| 2.5. Arrangements with Local Authorities | 3 |
| 2.6. Fire Suppression Equipment | 3 |
| 2.7. Communication Equipment | 3 |
| 2.8. Evacuation Plan | 3 |
| 2.9. Authorization to Commit EEFI Resources | 4 |
| 3.0 Copies of Contingency Plan..... | 4 |
| 4.0 Amendment of Contingency Plan | 4 |
| 5.0 Emergency Coordinator | 4 |
| 6.0 Emergency Procedures | 4 |

Appendix:

| | |
|------------|--|
| Figure 1: | List of Emergency Coordinator and Alternates |
| Figure 2: | Spill Response Equipment, Uses and Capabilities |
| Figure 3: | Coordination Agreement with Response Agency |
| Figure 4: | Local Agency Response |
| Figure 5: | Locations of Fire Response Equipment |
| Figure 6: | Location and Description of Fire Extinguishers |
| Figure 7: | Evacuation Routes |
| Figure 8: | Authorization to Commit EEFI Resources |
| Figure 9: | Contingency Plan Revisions and Amendments |
| Figure 10: | List of Organizations Capable of Providing Emergency Services in the Event of a Release, Fire or Explosion |
| Figure 11: | Outside Storage Areas Site Plan |
| Figure 12: | Property Boundary Site Plan |

Environmental Enterprises of Florida, Inc.
Contingency Plan and Emergency Procedures

1.0 PURPOSE AND IMPLEMENTATION OF CONTINGENCY PLAN

- a. The contingency plan is designed to minimize hazards to human health or the environment from fire, explosions, or any unplanned sudden or non-sudden release of hazardous waste or hazardous waste constituents to air, soil, or surface water.

The plan will be implemented immediately whenever there is a fire, explosion, or release of hazardous waste or hazardous waste constituents that could threaten human health or the environment.

- b. The following is the Contingency Plan Recipients List:

Florida Department of Environmental Protection
Bob Martinez Center
2600 Blair Stone Road
Tallahassee, FL 32399-2400

Florida Department of Environmental Protection
Central District Office
3319 Maguire Blvd Ste 232
Orlando, FL 32803-3767
407.894.7555.

Orange County Office of Emergency Management
P.O. Box 5879
Winter Park, FL 32793

Orange County Fire Rescue
P.O. Box 5879
Winter Park, FL 32793

Orange County Sheriff's Office
2500 W. Colonial Drive
Orlando, FL 32804

Orlando Regional Healthcare
1414 Kuhl Avenue
Orlando FL 32806

2.0. CONTENT OF CONTINGENCY PLAN

All personnel involved in the transportation of hazardous waste endeavor to keep an emergency involving those materials from ever taking place. Adhering to strict compliance with regulation set forth by the State and Federal governments will greatly minimize the chance of an emergency situation involving these materials from occurring.

If an emergency does occur, however, there are certain actions that must be taken to protect lives and property. It is essential that all persons who come into frequent contact with hazardous wastes be familiar with emergency procedures. Prompt action on the part of all concerned will enable many emergencies to be controlled and minimize the possibility of injury and property damage.

2.1. Driver Responsibilities

- a. Keep unauthorized persons away from spilled materials. Remain with the vehicle and advise pedestrians and motorists of the potential danger. Ask someone to notify the local police and fire departments.
- b. Set up warning devices surrounding the vehicle. When the police or fire department arrives, request the area to be blocked off to both pedestrians and motorist to prevent any injury or damage.
- c. Wearing the appropriate protection (gloves, boots, tyvek suit, respirator, etc.), dam-up or kike off spilled materials using the non-combustible absorbent in your emergency equipment. Use only rubber/plastic shovels to move materials. Protect the spill from entering sewers, ponds, rivers, etc.
- d. Contact the emergency coordinators at EEFI as soon as possible. The list of emergency coordinator and alternates are shown in Figure 1.

2.2. Information for the Emergency Coordinators

- a. Report all injuries
- b. Product name of material spilled
- c. T/S/D profile number, RCRA code, DOT classification
- d. Generator name
- e. Amount of spill
- f. Cause of spill (i.e. leaking container, defective valve, etc.)
- g. Exact date, time and location of incident
- h. Report the recommendations for equipment needed to clean up or repair damage

2.3. Emergency Coordinator Responsibilities

- a. Emergency coordinators shall notify immediately the following:

XL Environmental

| | |
|------------------------------|-----------------|
| Environmental First Response | 1(800) 823-7351 |
| CHEMTREC (chemical info) | 1(800) 424-9300 |

Sunbelt Rental

| | |
|---------------------|-----------------|
| Emergency Equipment | 1(407) 816-8008 |
|---------------------|-----------------|

State (DEP/District office) Officials

| | |
|--|----------------------------------|
| DCA STATE WARNING POINT | (407) 894-7555 |
| National Response Center | 1-850-413-9911 or 1-800-320-0519 |
| Orange County Florida EPD Local Office | 1-800-424-8802 |
| | 1-407-836-1400 |

In Alabama contact:

| | |
|---|-----------------|
| Hazardous Materials/Waste Incidents | 1(800) 843-0699 |
| U.S. Coast Guard (Mobile, AL) | 1(334) 639-6287 |
| Alabama Emergency Management Agency | 1(800) 356-9596 |
| Alabama Dept. of Public Safety | 1(205) 280-2200 |
| Alabama Dept. of Environmental Management | 1(334) 260-2700 |

- b. If it is estimated that the material presents an extreme hazard or if more than 500 gallons of any material has spilled, the Emergency Coordinator and a Quality Control Chemist must accompany the clean up crew to the site. It is up to the discretion of management to send a Quality Control Chemist in all other circumstances.

- c. Within fifteen (15) days of any spill, a report must be filed by the Emergency Coordinator, in duplicate form, on Form ES800.1 and submitted to the Secretary of Hazardous Materials Regulations Board, Department of Transportation, Washington, D.C. 20590. A copy of the hazardous waste manifest must be attached to this report.

2.4. Emergency Equipment

a. In Driver Emergency Bag:

- Gloves
- Goggles
- Boots
- Hard hat
- Rubber shovel
- Respirator (Full Face)
- DOT Emergency Response Guidebook
- Skin and eye neutralization solution
- First Aid Kit

b. At Warehouse: Refer to Figure 2 for spill Response Equipment, Uses and Capabilities

- c. Van Trailers are equipped with a solvent and acid resistant membrane liner that cover the walls and floor of the vehicle and extends beyond the trailer door to allow for self-containment of leaking drums on the trailer.

2.5. Arrangements with Local Authorities

Coordination agreements will be submitted to various local agencies designating their response role in the event of an emergency (See Figure 3 and 4). Copies of all executed agreements will be maintained at the facility.

2.6. Fire Suppression Equipment

There are seven (7) 4 to 10 pound ABC fire extinguishers in the warehouse and five (5) 2.5 to 10 pound fire extinguishers in the office building. The locations and description of each fire extinguisher is present in Figure 5 and 6.

2.7. Communication Equipment

In the event of a release, fire or explosion, communication on-site is accomplished by voice, intercom and/or sounding the alarm. There are two alarms in the facility – one inside the office, another one is located at the warehouse. The locations of the alarms are present in Figure 5.

- Pull stations – to sound the alarm, alert the fire department.
- Telephones – available to Emergency Coordinator to notify outside agencies and request emergency response assistance.

2.8. Evacuation Plan

The emergency coordinator will assess the need for evacuation of the facility or off-site area as follows. If it is unsafe for personnel to remain on-site, he will order an immediate evacuation. Unsafe conditions may include the presence of hazardous constituents in gaseous or liquid form in quantities, which will endanger plant personnel or residents off-site; imminent explosions, or the potential for any of the above to occur. Evacuation routes and the assembly point are specified on Figure 6. The primary evacuation route is the main entrance for office and the gate for the warehouse (Figure 7) and should this main route

be blocked or inaccessible, the west exits of warehouse or back exit to the outside of the office will be opened to provide alternate routes of escape. The signal to evacuate is given by voice, public address system or indicated by the sounding of the fire alarm.

2.9 Authorization to Commit EEFI Resources (Figure 8)

Refer to Figure 8 for Information.

3.0 COPIES OF CONTINGENCY PLAN

A copy of the contingency plan and all revisions to the plan will be:

- (a) Maintained at the facility; and
- (b) Submitted to all local police departments, fire departments, hospitals, and State and local emergency response teams that may be called upon to provide emergency services. Figures 9 and 10.

4.0 AMENDMENT OF CONTINGENCY PLAN

The contingency plan will be reviewed, and if necessary, amended whenever:

- (a) Applicable regulations are revised;
- (b) The plan fails in an emergency;
- (c) EEFI changes in its design, construction, operation, maintenance, or other circumstances—in a way that materially increases the potential for fires, explosions, or releases of hazardous waste or hazardous waste constituents, or EEFI changes the response necessary in an emergency;
- (d) The list of emergency coordinators changes; or
- (e) The list of emergency equipment changes.

5.0 EMERGENCY COORDINATOR

At all times, there will be at least one employee either on the facility premises or on call (i.e. to respond to an emergency by reaching the facility within a short period of time) with the responsibility for coordinating all emergency response measures. The emergency coordinator will be thoroughly familiar with all aspects of the facility's contingency plan, all operations and activities at the EEFI facility, the location and characteristics of waste handled, the location of all records within the facility, and layout. In addition, this person will have the authority to commit the resources needed to carry out the contingency plan.

6.0 EMERGENCY PROCEDURES

- (a) Whenever there is an imminent or actual emergency situation, the emergency coordinator (or his designee when the emergency coordinator is on call) will immediately:
 - (1) Activate internal facility alarms or communication systems, where applicable, to notify all facility personnel; and
 - (2) Notify appropriate State or local agencies with designated response roles if their help is needed.
- (b) Whenever there is a release, fire, or explosion, the emergency coordinator will immediately identify the character, exact source, amount, and a real extent of any released materials. He may do this by observation or review of EEFI records or manifests and, if necessary, by chemical analysis.
- (c) Concurrently, the emergency coordinator will assess possible hazards to human health or the environment that may result from the release, fire, or explosion. This assessment must consider both direct and indirect effects of the release, fire, or explosion (e.g., the effects of any toxic, irritating, or asphyxiating gases that are generated, or the effects of any hazardous surface water run-offs from water or chemical agents used to control fire and heat-induced explosions).
- (d) If the emergency coordinator determines that the facility has had a release, fire, or explosion which could threaten human health, or the environment, outside the facility, he will report his findings as follows:

(1) If his assessment indicates that evacuation of local areas may be advisable, he will immediately notify appropriate local authorities. He will be available to help appropriate officials decide whether local areas should be evacuated; and

(2) He will immediately notify either the government official designated as the on-scene coordinator for that geographical area (in the applicable regional contingency plan under part 1510 of this title), or the National Response Center (using their 24-hour toll free number 800/424-8802). The report will include:

- (i) Name and telephone number of reporter;
- (ii) The address of the facility;
- (iii) Time and type of incident (e.g., release, fire);
- (iv) Name and quantity of material(s) involved, to the extent known;
- (v) The extent of injuries, if any; and
- (vi) The possible hazards to human health, or the environment, outside the facility.

(e) During an emergency, the emergency coordinator will take all reasonable measures necessary to ensure that fires, explosions, and releases do not occur, recur, or spread to other hazardous waste at the facility. These measures will include, where applicable, stopping processes and operations, collecting and containing released waste, and removing or isolating containers.

(f) If the facility stops operations in response to a fire, explosion or release, the emergency coordinator will monitor for leaks, pressure buildup, gas generation, or ruptures in valves, pipes, or other equipment, wherever this is appropriate.

(g) Immediately after an emergency, the emergency coordinator will provide for treating, storing, or disposing of recovered waste, contaminated soil or surface water, or any other material that results from a release, fire, or explosion at the facility.

(h) The emergency coordinator will ensure that, in the affected area(s) of the facility:

(1) No waste that may be incompatible with the released material is treated, stored, or disposed of until cleanup procedures are completed; and

(2) All emergency equipment listed in the contingency plan is cleaned and fit for its intended use before operations are resumed.

(i) The owner or operator will note in the operating record the time, date, and details of any incident that requires implementing the contingency plan. Within 15 days after the incident, he will submit a written report on the incident to the Regional Administrator. The report will include:

- (1) Name, address, and telephone number of the owner or operator;
- (2) The address and telephone number of the facility;
- (3) Date, time, and type of incident (e.g., fire, explosion);
- (4) Name and quantity of material(s) involved;
- (5) The extent of injuries, if any;
- (6) An assessment of actual or potential hazards to human health or the environment, where this is applicable; and
- (7) Estimated quantity and disposition of recovered material that resulted from the incident.

FIGURE 1

LIST OF EMERGENCY COORDINATOR AND ALTERNATES

FIGURE 1.
LIST OF EMERGENCY COORDINATOR AND ALTERNATES

PRIMARY EMERGENCY
COORDINATOR:

Mr. Rondal G. Chambers

Address: 314 B Landstreet Road
Orlando FL 32824

Home Telephone Number: (800)223-8140
(407)352-8140

Work Telephone Number: (800)762-9162
(407)855-0141

Cell Phone Number: (407)948-2205

.....
First Alternate: Michelle Chambers

Address: 314 B Landstreet Road
Orlando FL 32824

Work Telephone Number: (800)762-9162
(407)855-0141

Cell Phone Number: (407)466-7869

.....
Second Alternate: Ismael A. Jusino

Address: 314 B Landstreet Road
Orlando FL 32824

Work Telephone Number: (800)762-9162
(407)855-0141

Cell Phone Number: (407)466-7868

FIGURE 2

SPILL RESPONSE EQUIPMENT, USES AND CAPABILITIES

FIGURE 2
SPILL RESPONSE EQUIPMENT, USES AND CAPABILITIES

| <u>Item</u> | <u>Use and Capabilities</u> |
|------------------------------------|--|
| Salvage Drum | Deposit spill residue and over pack leaking containers; DOT-specification 85 gallon open head and 55-gallon containers |
| Gloves* | Protect hands from chemical exposure; chemical - resistant |
| Respirator* | Protect workers from inhalation of toxic vapors, organic vapor-acid gas cartridge |
| Absorbent | Absorb and prevent the spread of non- corrosive liquid spills |
| Push Broom | Sweep up spent absorbent |
| Shovel | Sweep up spent absorbent and solid spill residues; spark-proof blade |
| Fully Encapsulating Suits | Protect skin from exposure to hazardous waste; chemical resistant; Tyvek coated; disposable |
| Apron | Cover body and partially cover legs to protect from exposure to hazardous waste splashes; chemical resistant |
| Goggles | Protect eyes from exposure to hazardous waste splashes |
| Face Shield | Protect eyes from exposure to hazardous waste splashes; chemical resistant |
| Boots | Protect feet from chemical exposure chemical resistant |
| Coveralls | Chemically resistant pants and jacket combination to protect body and legs from spills |
| Self Contained Breathing Apparatus | Provide 30 minutes breathing air, with low supply alarm |
| Ear Plugs | Provide protection of the ears from noise |

FIGURE 3

COORDINATION AGREEMENT WITH RESPONSE AGENCY

FIGURE 3
COORDINATION AGREEMENT WITH RESPONSE AGENCY

Date

Address

Dear Sir or Madam:

Environmental Enterprises of Florida, Inc. (EEFI) is a transporter offering hazard and non-hazard waste transport services such as used oil filter and biomedical. With this letter, EEFI is submitting to your agency a copy of our facility's Contingency Plan.

This plan is designed to minimize hazards to human health and the environment from fires, explosions, or any unplanned sudden or non-sudden release of hazardous waste or hazardous waste constituents to air, soil, or surface water. We are submitting it to you to familiarize you with our facility, wastes handled at our facility and their hazards, places where facility personnel would normally be working, entrances to, and roads inside our facility, and possible evacuation routes.

Title 40 of the Code of Federal regulations, Part 264.37, requires us to obtain an agreement with your agency regarding the implementation of our contingency plan and your ability to assist us within your capabilities in the event of an emergency, please sign the attached letter of confirmation.

Please feel free to contact me if you have any questions or if you would like me to arrange a plant tour to familiarize you with our facility at 407-855-0141.

Sincerely,
Environmental Enterprises of Florida, Inc.

Rondal Chambers
President

FIGURE 4

LOCAL AGENCY RESPONSE

FIGURE 4
LOCAL AGENCY RESPONSE

Date _____

Environmental Enterprises of Florida, Inc.
314 B W. Landstreet Road
Orlando, FL 32824

Dear Sir or Madam:

This is to confirm that we have received a copy of the Environmental Enterprises of Florida, Inc. Contingency Plan. Our agency will assist your facility within our capabilities in the event of an emergency.

We can offer the following services:

Fire Response Spill Response

Medical Traffic Control

Other (specify): _____

Sincerely,

Name: _____

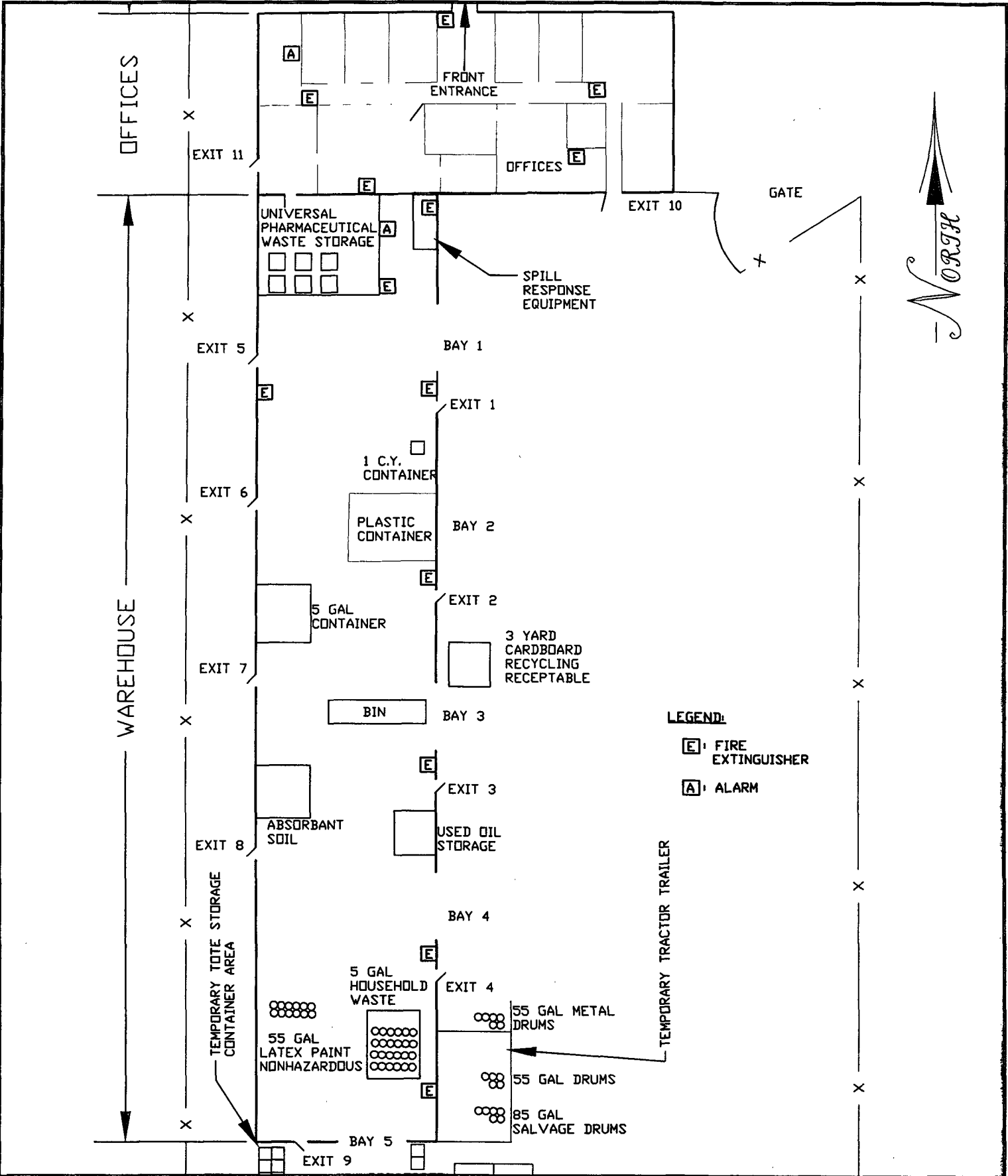
Title: _____

Organization: _____

Address: _____

FIGURE 5/

LOCATIONS OF FIRE RESPONSE EQUIPMENT



Excel Engineering
 ENVIRONMENTAL & CIVIL ENGINEERS
 122 WILSHIRE BOULEVARD
 CASSELBERRY, FL 32707
 TEL: (407) 260-2292 FAX: (407) 260-1193
 CERTIFICATE OF AUTHORIZATION NO. 27541

EEFI
 10-DAY HAZARDOUS WASTE
 TRANSFER FACILITY

FIRE RESPONSE
 EQUIPMENT LOCATIONS

PROJECT: EEF01-0109
 SCALE: N.T.S.
 DRAWN: JAC
 CHECKED: JL
 DATE: 6/4/09
 SHEET 1 OF 1

FIGURE 6

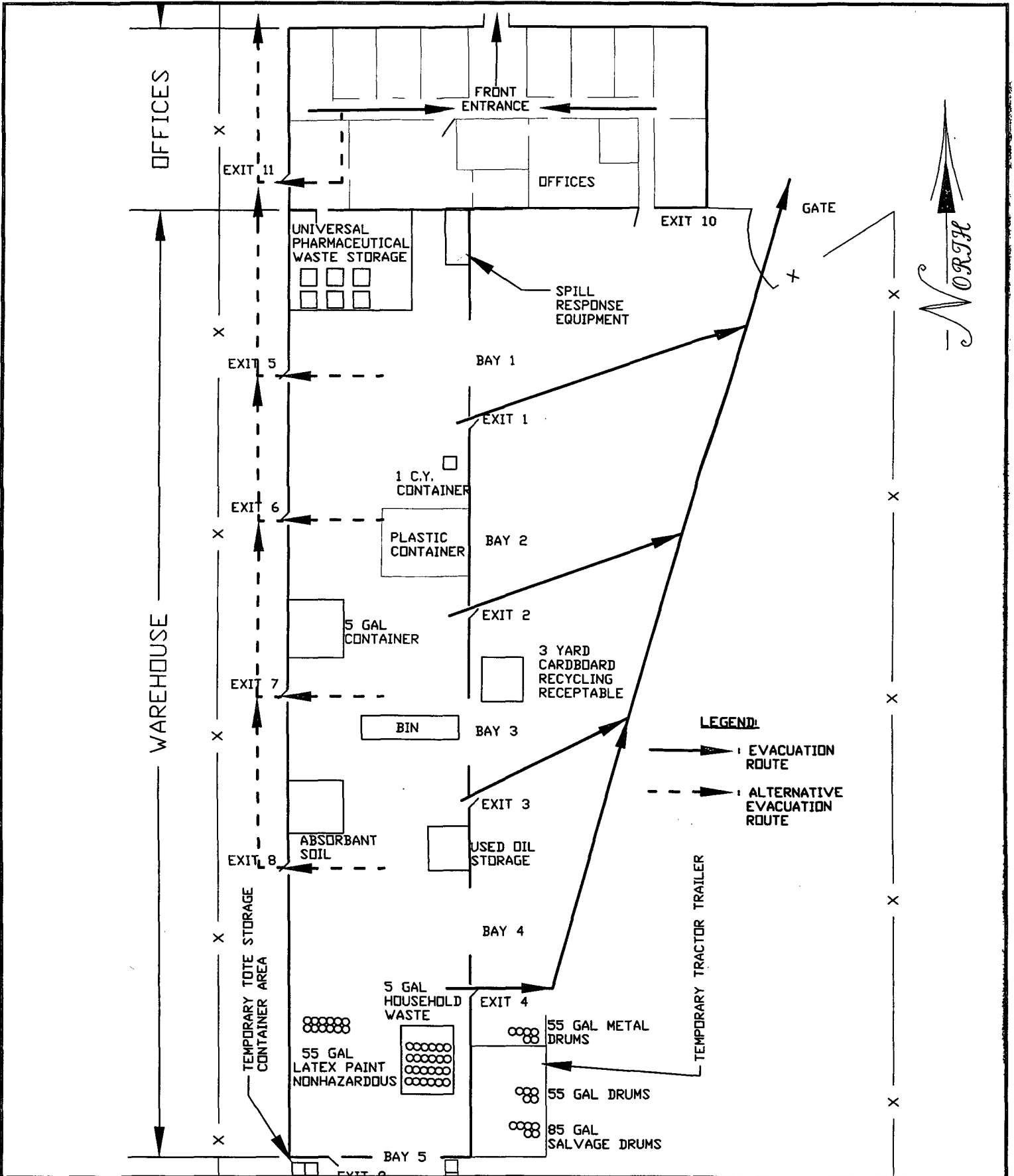
LOCATION AND DESCRIPTION OF FIRE EXTINGUISHERS

FIGURE 6
LOCATION AND DESCRIPTION OF FIRE EXTINGUISHERS

| Location | Quantity | Description |
|---|-----------------|------------------------|
| NE corners of the Warehouse | 1 | 10-pound dry chemical |
| North center of Warehouse | 1 | 4-pound dry chemical |
| By first loading bay from north of the warehouse | 1 | 8-pound dry chemical |
| By first exit from north of west wall | 1 | 8-pound dry chemical |
| By second loading bay from north of the warehouse | 1 | 3-pound dry chemical |
| By third loading bay from north of the warehouse | 1 | 10-pound dry chemical |
| By fourth loading bay north of the warehouse | 1 | 8-pound dry chemical |
| Main Office | 3 | 8-pound dry chemical |
| | 1 | 10-pound dry chemical |
| | 1 | 2.5 pound dry chemical |

FIGURE 7

EVACUACIÓN ROUTES



Excel Engineering
 ENVIRONMENTAL & CIVIL ENGINEERS
 122 WILSHIRE BOULEVARD
 CASSELBERRY, FL 32707
 TEL: (407) 260-2292 FAX: (407) 260-1193
 CERTIFICATE OF AUTHORIZATION NO. 27541

EEFI
 10-DAY HAZARDOUS WASTE
 TRANSFER FACILITY

FIRE RESPONSE
 EVACUATION ROUTE

PROJECT: EEF01-0109
 SCALE: N.T.S.
 DRAWN: JAC
 CHECKED: JL
 DATE: 6/4/09
 SHEET 1 OF 1

FIGURE 8

AUTHORIZATION TO COMMIT EEFI RESOURCES

FIGURE 8
AUTHORIZATION TO COMMIT EEFI RESOURCES

PREMARRY EMERGENCY
COORDINATOR: Mr. Rondal G. Chambers

Address: 314 B Landstreet Road
Orlando FL 32824

Home Telephone Number: (800)223-8140
(407)352-8140

Work Telephone Number: (800)762-9162
(407)855-0141

Cell Phone Number: (407)948-2205

.....
First Alternate: Michelle Chambers

Address: 314 B Landstreet Road
Orlando FL 32824

Work Telephone Number: (800)762-9162
(407)855-0141

Cell Phone Number: (407)466-7869

.....
Second Alternate: Ismael A. Jusino

Address: 314 B Landstreet Road
Orlando FL 32824

Work Telephone Number: (800)762-9162
(407)855-0141

Cell Phone Number: (407)466-7868
.....

General Manager: _____
Mr. Rondal G. Chambers

FIGURE 9

CONTINGENCY PLAN REVISIONS AND AMENDMENTS

FIGURE 10

**LIST OF ORGANIZATIONS CAPABLE OF PROVIDING
EMERGENCY SERVICES IN THE EVENT OF A RELEASE, FIRE OR EXPLOSION**

FIGURE 10
LIST OF ORGANIZATIONS CAPABLE OF PROVIDING EMERGENCY
SERVICE IN THE EVENT OF A RELEASE, FIRE, OR EXPLOSION

| Agency | Address | Telephone Number |
|--|--|------------------|
| Orlando Regional Healthcare | 1414 Kuhl Avenue Orlando, FL 32806 | 321-843-7000 |
| Orange County Sheriff's Department Communication Center | 2400 W 33 rd Street Orlando, FL 32839 | 407-236-4357 |
| Orange County Fire Department Station #73 | 811 East 1 st Street Orlando, FL 32824 | |
| Southern Waste Services, Inc. | 2211 St. Andrews Blvd. Panama City, FL 32405 | 1-800-852-8878 |

FIGURE 11

OUTSIDE STORAGE AREAS SITE PLAN

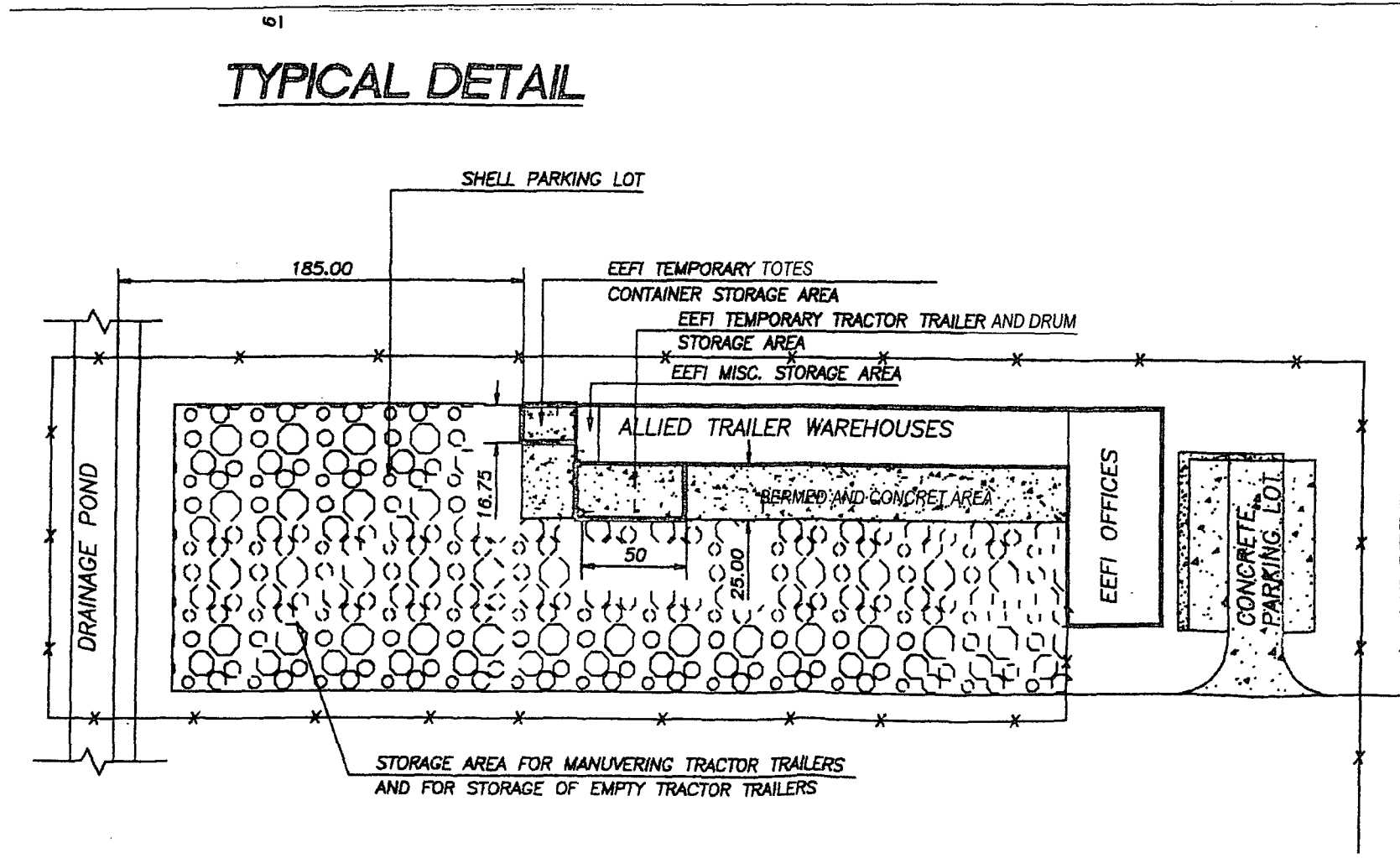
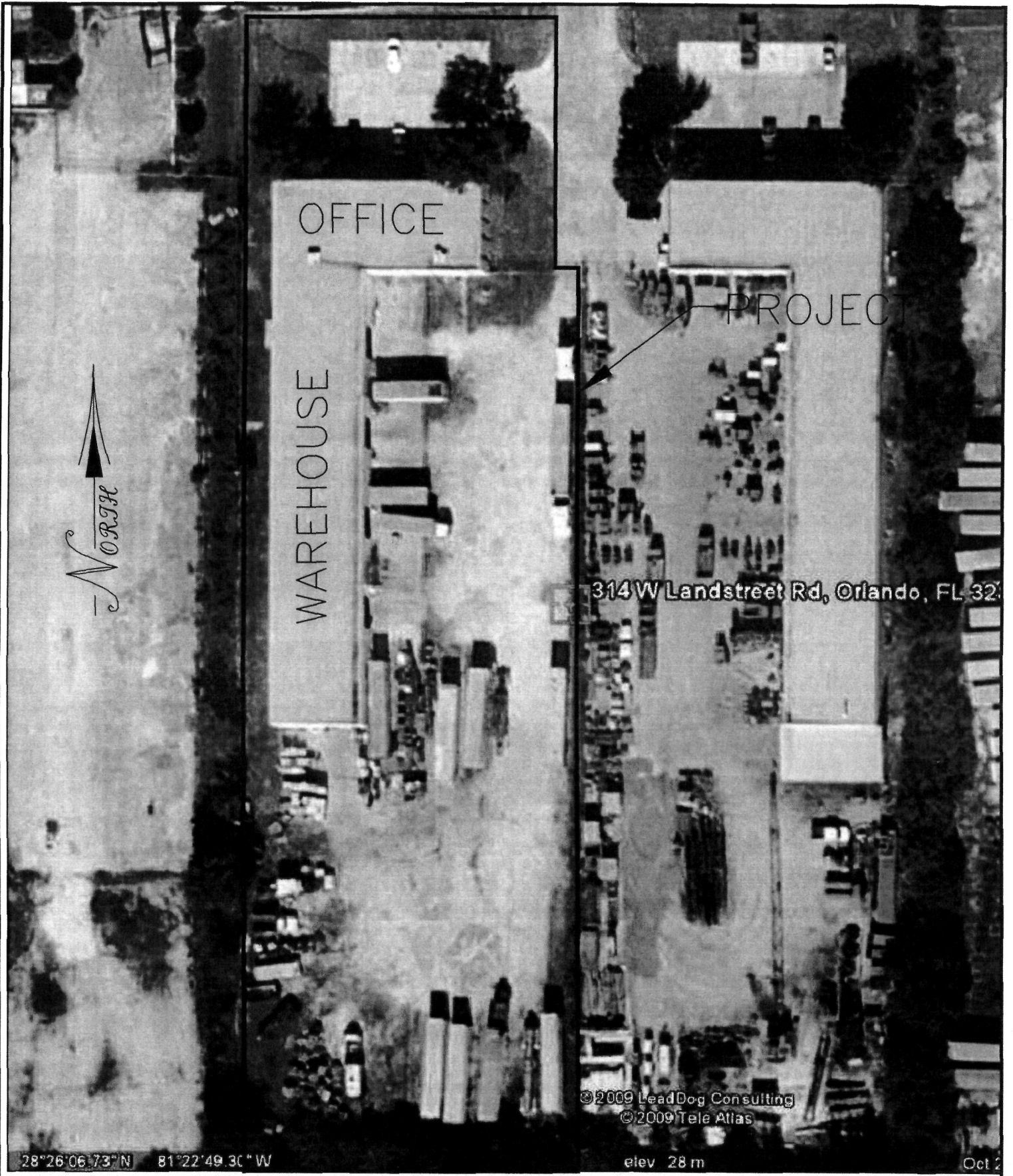


FIGURE 12

PROPERTY BOUNDARY SITE PLAN



28°26'06.73" N 81°22'49.30" W

©2009 LeadDog Consulting
©2009 Tele Atlas

elev 28 m

Oct 2

Excel Engineering
 ENVIRONMENTAL & CIVIL ENGINEERS
 122 WILSHIRE BOULEVARD
 CASSELBERRY, FL 32707
 TEL: (407) 260-2292 FAX: (407) 260-1193
 CERTIFICATE OF AUTHORIZATION NO. 27541

EEFI
 10-DAY HAZARDOUS WASTE
 TRANSFER FACILITY

PROPERTY BOUNDRY LINE

| | | | | | |
|------------------------|------------------|---------------|----------------|-----------------|--------------|
| PROJECT: EEF01-0109 | SCALE: N.T.S. | DRAWN: JAC | CHECKED: JL | DATE: 6/4/09 | SHEET 1 OF 1 |
|------------------------|------------------|---------------|----------------|-----------------|--------------|