



RECEIVED
DEC 16 1993

Department of Environmental Protection
SOUTHWEST DISTRICT

BY _____

December 15, 1993

Florida Department of
Environmental Protection
Southwest District
3804 Coconut Palm Drive
Tampa, Florida 33619

Re: Tampa Electric Company
→ Central Operations Center
Hazardous Waste Emergency Response Plans

Dear Sirs:

Under 40 CFR 265.37 and 40 CFR 265.53, Tampa Electric Company (TEC) is required to inform local authorities and emergency response organizations of hazardous waste activities and emergency response procedures at the above referenced facility and to submit revisions as required.

Enclosed are revised copies of the following plans for this facility:

- Preparedness and Prevention Plan
- Contingency Plan and Emergency Procedures

If you should have any questions, please feel free to call me.

Sincerely,

A. Spencer Autry
Director
Environmental Planning

lr/GLS169

Enclosure

PROCEDURES FOR HANDLING HAZARDOUS WASTE
CENTRAL OPERATIONS CENTER
REVISION (11/93)

7.0 PREPAREDNESS AND PREVENTION PLAN

7.1 GENERAL

At the Central Operations Center, the hazardous waste storage area is maintained to minimize the possibility of a fire, explosion, or any release of hazardous waste. The following equipment is available and in good operating condition in the event of a fire, explosion, or release of hazardous waste from any location within the facility:

- o Telephone system for summoning on-site assistance. Immediate access to all communications equipment is assured at all times.
- o Telephone system for summoning assistance from State or local emergency response teams, local hospital and local police and fire departments, as necessary. Immediate access to all communications equipment is assured at all times.
- o Fire extinguishers (see Appendix D for listing of locations).
- o Emergency water system.
- o Spill containment and clean-up materials and equipment, including oil-absorbent pads and other oil-absorbing materials. A list of the available equipment is found in Table 7.1-1. This material and equipment are located in the north end of the Storeroom Building. Figure 7.1-1 shows the location of this equipment.

All communications and alarm systems, fire protection equipment, and spill control equipment are inspected regularly to assure proper operation at the time of an emergency. Section 4.0 of this manual addresses the inspection procedures.

In addition, sufficient aisle space is provided to allow for the movement of emergency equipment to any area.

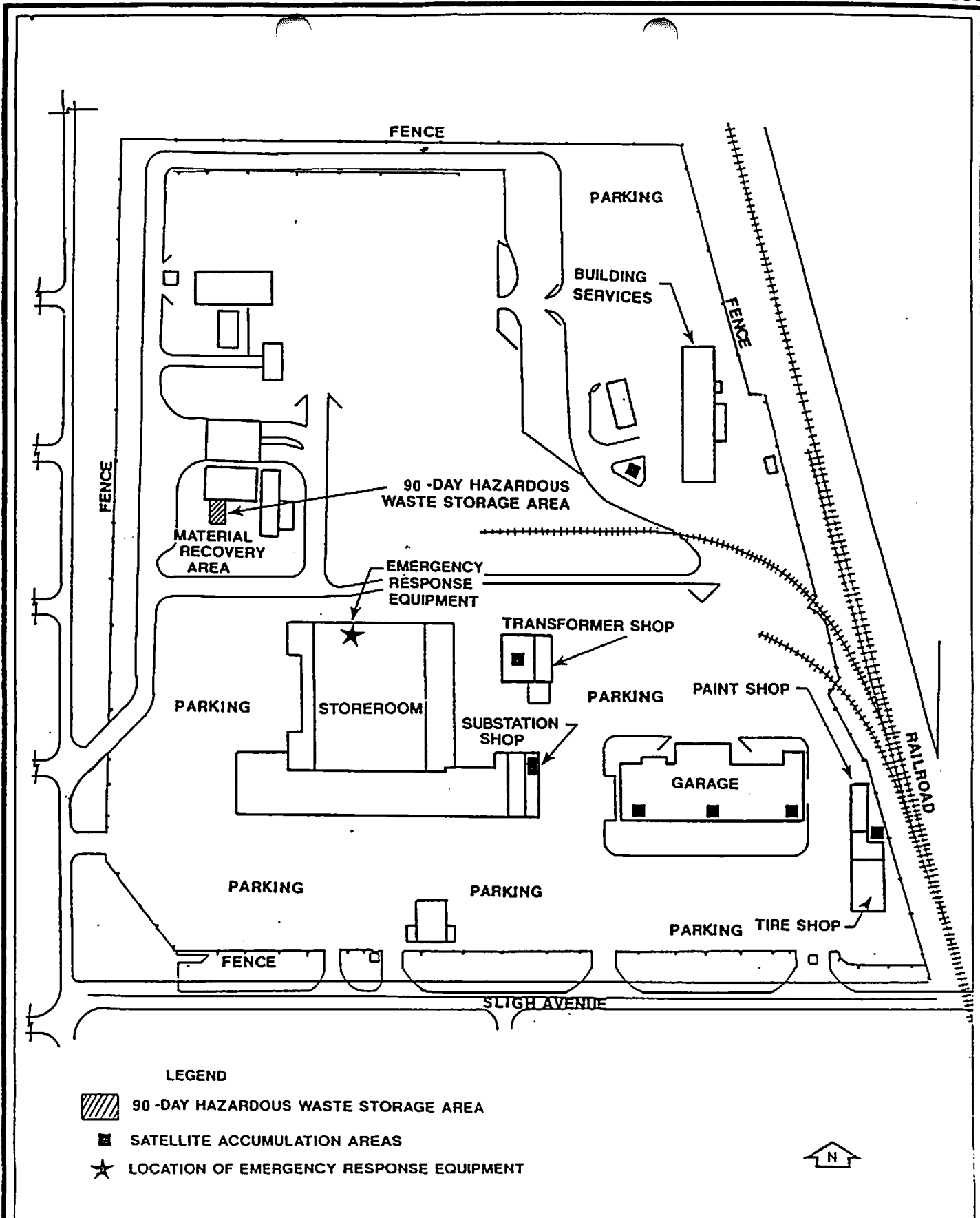
Copies of the Contingency Plan have been provided to the following local authorities to familiarize them with facility layout, the properties of hazardous waste handled at the facilities, places where facility personnel would be working with hazardous wastes, entrances to roads inside the facility and possible evacuation routes:

- o Tampa Police Department
- o Tampa Fire Department/City Paramedics

PROCEDURES FOR HANDLING HAZARDOUS WASTE
CENTRAL OPERATIONS CENTER
REVISION (11/93)

Table 7.1-1. Hazardous Material Emergency Response Kit

Item	Stock Number
Sealable 55-gallon drum	6324622
Disposable gloves (4 pair)	5839760
Disposable shoe covers (4 pair)	5839710
Disposable coveralls (4 pair)	5839820
Chemical monogoggles (4 pair)	6332978
Stay-dry absorbent (2 bags)	5851230
Barricade tape (2 rolls)	5858650
Respirators with organic cartridges (4 pair)	6011867
Organic vapor cartridges (4 pair)	6011869
Dust and mist cartridges (4 pair)	6011870
PCB labels	1340336
Drum contents labels	1053390
Flat point shovel	5837710
Broom	5850320
Plastic drop cloth	5855650
Power cleaner 155	5857460



PROCEDURES FOR HANDLING HAZARDOUS WASTE
CENTRAL OPERATIONS CENTER
REVISION (11/93)

- o Tampa General Hospital
- o St. Joseph's Hospital
- o Florida Department of Environmental Regulation/Southwest District

Tampa Electric Company has notified these authorities of the properties of hazardous waste handled at the Central Operations Center and the types of injuries or illnesses that could result from fires, explosions, or released at the facilities.

7.2 EVACUATION PLAN

In the event that evacuation is required, an announcement will be made instructing personnel to leave the affected work areas. The routes of evacuation are shown in Figure 7.2-1.

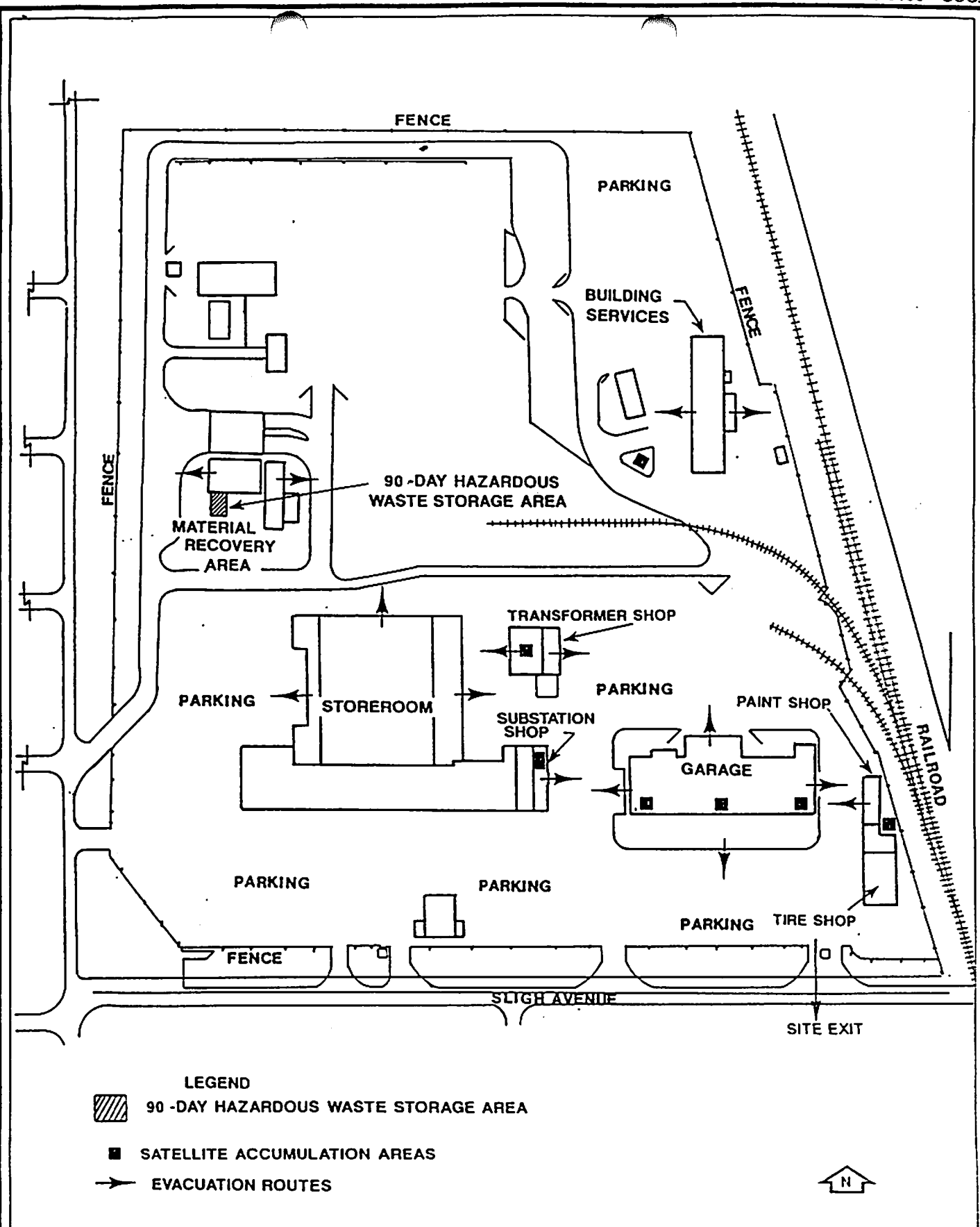


FIGURE 7.2-1
BUILDING EVACUATION ROUTES

PROCEDURES FOR HANDLING HAZARDOUS WASTE
CENTRAL OPERATIONS CENTER
REVISION (11/93)

8.0 CONTINGENCY PLAN AND EMERGENCY PROCEDURES

In the event of a fire or explosion involving hazardous wastes, the Emergency Response Plan for the Operations Center will be implemented to contain, control, and extinguish the fire. In the event of a spill or other release to the land or stormwater drainage system, the employee who observes the event will first take steps to contain or control the spill until additional assistance is obtained. At this time, the Spill Prevention Countermeasures and Control (SPCC) Plan for the Operations Center will be implemented to contain and control the release. The following sequence of actions are followed in response to a fire, explosion, or release of hazardous wastes:

- o In all cases, the Materials Recovery Supervisor is the primary Emergency Coordinator. The Emergency Coordinator will activate the onsite communications system in order to direct cleanup activities, as needed. In the absence of the Emergency Coordinator, a supervisor will carry out immediate activities until the Emergency Coordinator arrives at the release location.
- o The Emergency Coordinator will identify the character, source, amount, and areal extent of released materials by any means appropriate.
- o The Emergency Coordinator will make arrangements with emergency response teams, police, and fire departments and hospitals, as required, to obtain appropriate emergency services.
- o The Emergency Coordinator will notify Environmental Planning with information regarding the incident.
- o The Emergency Coordinator will supervise cleanup activities at the site ensuring that all hazardous wastes and contaminated materials are collected and disposed of properly. Emergency equipment will be rehabilitated before normal operations resume.
- o Environmental Planning will notify appropriate local, State, and Federal agencies with a written report within 15 days of the event.

The hazardous waste emergency response sequence is illustrated in Figure 8.0-1. A list of emergency contacts is provided in Table 8.0-1. The emergency equipment that is available onsite for containment and control is listed in Table 7.1-1 in Section 7.0 and the location of this equipment at the north end of the storeroom is shown in Figure 7.1-1. The emergency service and response teams that are available are listed in Table 8.0-2.

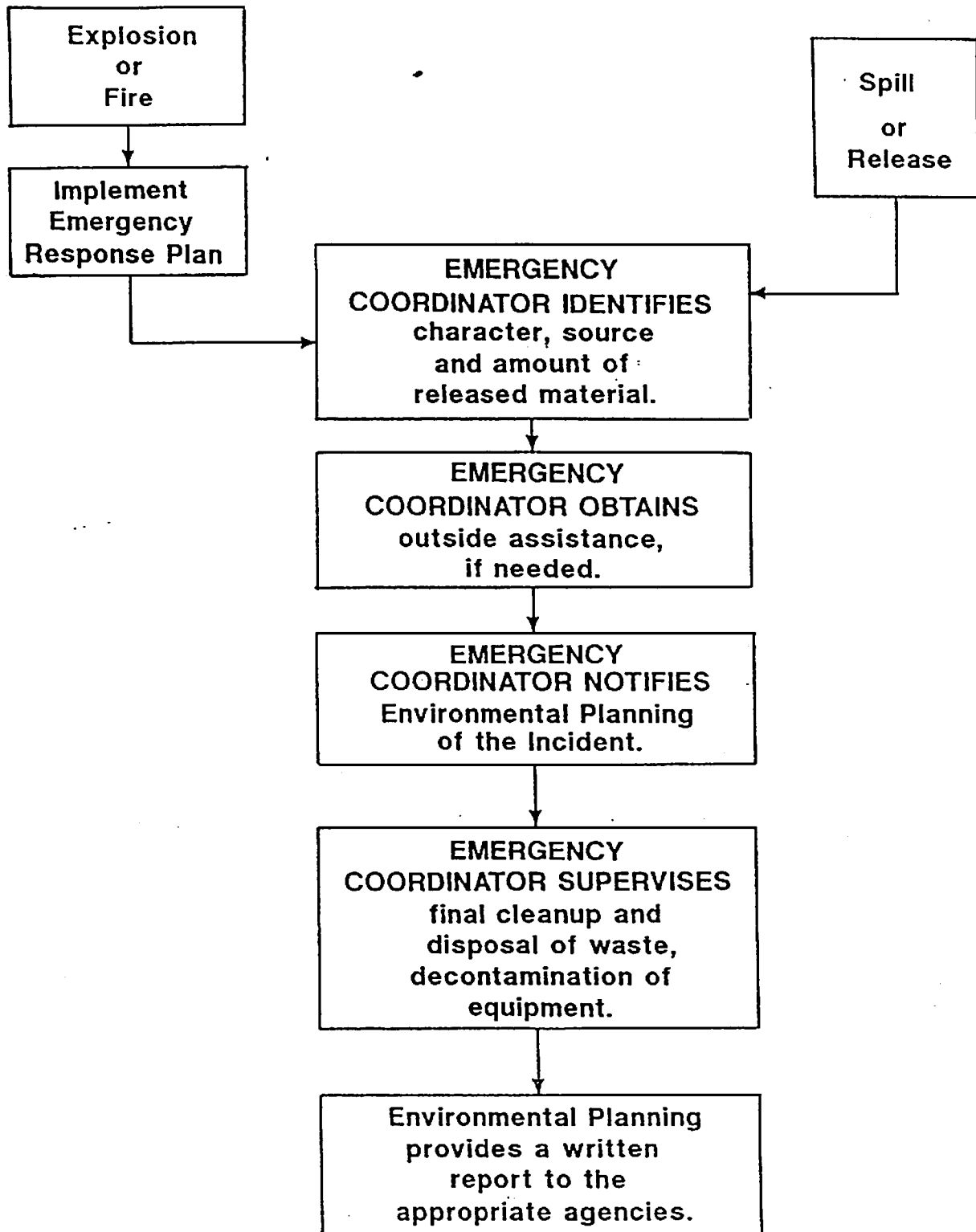


FIGURE 8.0-1
EMERGENCY RESPONSE SEQUENCE

PROCEDURES FOR HANDLING HAZARDOUS WASTE
CENTRAL OPERATIONS CENTER
REVISION (11/93)

Table 8.0-1. Emergency Response Contacts

Contact	Work Phone Numbers	Home Phone Numbers	Home Address
<u>Emergency Coordinators</u>			
Michael D. Morgan (Primary)	228-4011 Ext. 36147	238-0901	7005 N. 15th St. Tampa, FL 33610
Ed Balice	228-4011 Ext. 35331	685-8219	2327 Merrily Cir. Tampa, FL 33584
<u>Environmental Planning Pager</u> Use Touch Tone Phone: 1. Dial 883-7276 2. Wait for three rapid beep tones 3. Dial number where you can be reached 4. Press # sign 5. Hang up			

PROCEDURES FOR HANDLING HAZARDOUS WASTE
CENTRAL OPERATIONS CENTER
REVISION (11/93)

Table 8.0-2. Emergency Services and Response Teams

Contact	Phone Number
Hillsborough County Sheriff	911
Hillsborough County Fire Dept.	911
National Response Center	800-424-8802
Tampa General Hospital	253-0711
St. Joseph's Hospital	870-4000
Brandon Humana Hospital	681-5551
Florida Department of Environmental Protection/SW District	744-6100