



September 28, 2011

Environmental Administrator
Hazardous Waste Regulation Section M.S. 4560
Department of Environmental Protection
2600 Blair Stone Road
Tallahassee, Florida 32399-2400

Attention: Mr. Merlin D. Russell, Jr.
Environmental Specialist III
Hazardous Waste Regulation

Subject: As-Built Drawings
Safety-Kleen Systems, Inc. -- Medley, Florida
EPA ID No. FLD 984 171 694; Permit No. 56019/HO/007

Dear Mr. Russell:

This letter transmits the referenced As-Built drawings in accordance with Conditions I.15.a, I.16 and I.17 of the facility permit. This transmittal includes one hard copy, and one electronic copy is being transmitted by e-mail.

These As-Built drawings were prepared pursuant to Condition 1 in Part VI.B of the facility permit. Specifically, Section 5.3 of the Remedial Action Plan indicates submittal of the As-Built drawings 120 days after initiating operation of active remediation, which began June 28, 2011. Therefore, these As-Built drawings are due no later than October 26, 2011.

If you have any questions, please call me at (847) 468-6733. Thank you.

Sincerely,

Robert A. Schoepke, P.G.
Director – Remediation

Enclosures

cc: Jeff Curtis / S-K Compliance (electronic copy)
Larry Rodriguez / S-K facility manager
Rick Stebnisky, P.G. / ECT
Mario Farrulla, P.E. / ECT (electronic copy)
Probas Adak / ECT (electronic copy)
Project File

AS BUILT DRAWINGS

FOR
REMEDIATION SYSTEM INSTALLATION

SAFETY KLEEN SYSTEMS, INC.
8755 NW 95TH STREET
MEDLEY, DADE COUNTY, FLORIDA

REMEDIATION SYSTEM

EPA I.D. NO. FLD 984 171 694

PREPARED FOR:

FLORIDA DEPARTMENT OF ENVIRONMENTAL PROTECTION

BY:



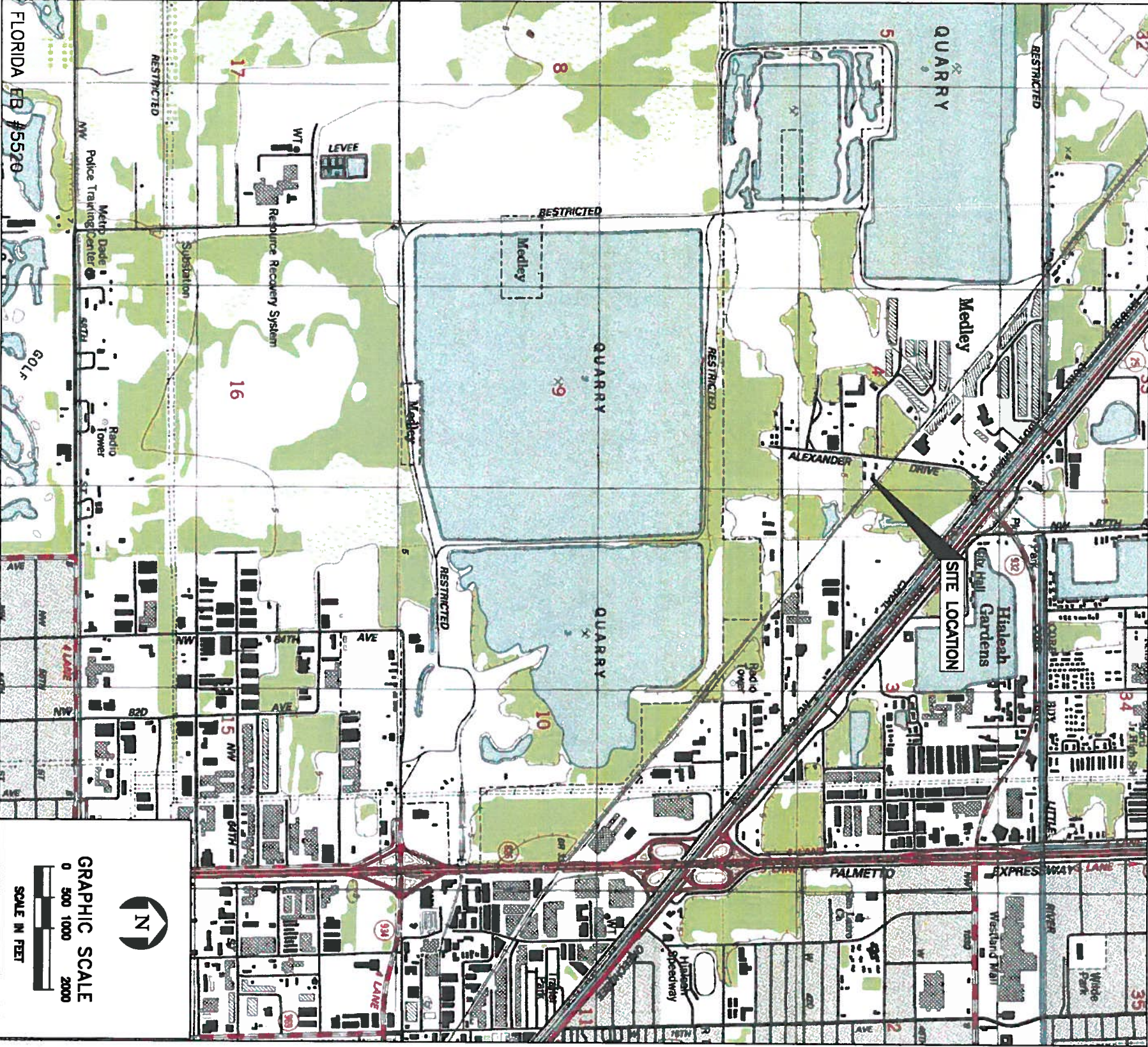
Environmental Consulting & Technology, Inc.

1408 N. WESTSHORE BLVD.
SUITE 115
TAMPA, FL. 33607-4520

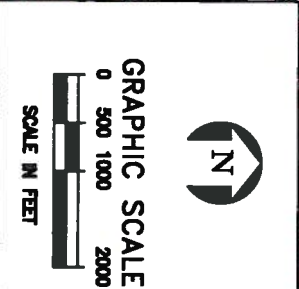
Certification of Authorization No. 5520

SEPTEMBER 2011

SHEET NO.	TITLE
1 OF 5	COVER/SITE LOCATION MAP
2 OF 5	SITE PLAN
3 OF 5	REMEDIATION SYSTEM PIPING LAYOUT AND WELL DESIGNATIONS
4 OF 5	AIR SPARGE WELL CONSTRUCTION DETAILS
5 OF 5	TYPICAL PROCESS AND INSTRUMENTATION DIAGRAM



FLORIDA FB #5520



GRAPHIC SCALE
0 500 1000 2000
SCALE IN FEET

SAFETY KLEEN SYSTEMS, INC.
MEDLEY, FLORIDA

FILE: Cover
DESIGNED BY: MEF
DATE: 09/07/2011
DRAWN BY: JS
PROJECT NO. 100666-2222-1100
CHECKED BY:

NO. DATE REVISION
Stanley T. Stoenen, P.E., FL. LIC. 33251
9/23/11




SITE LOCATION MAP

SAFETY KLEEN SYSTEMS, INC.
8755 NW 95TH STREET, MEDLEY, FLORIDA
FDEP FACILITY NO. 984171694

DRAWING NUMBER
1 OF 5

Environmental Consulting & Technology, Inc.
1408 NORTH WESTSHORE BOULEVARD, SUITE 115, TAMPA, FLORIDA 33607

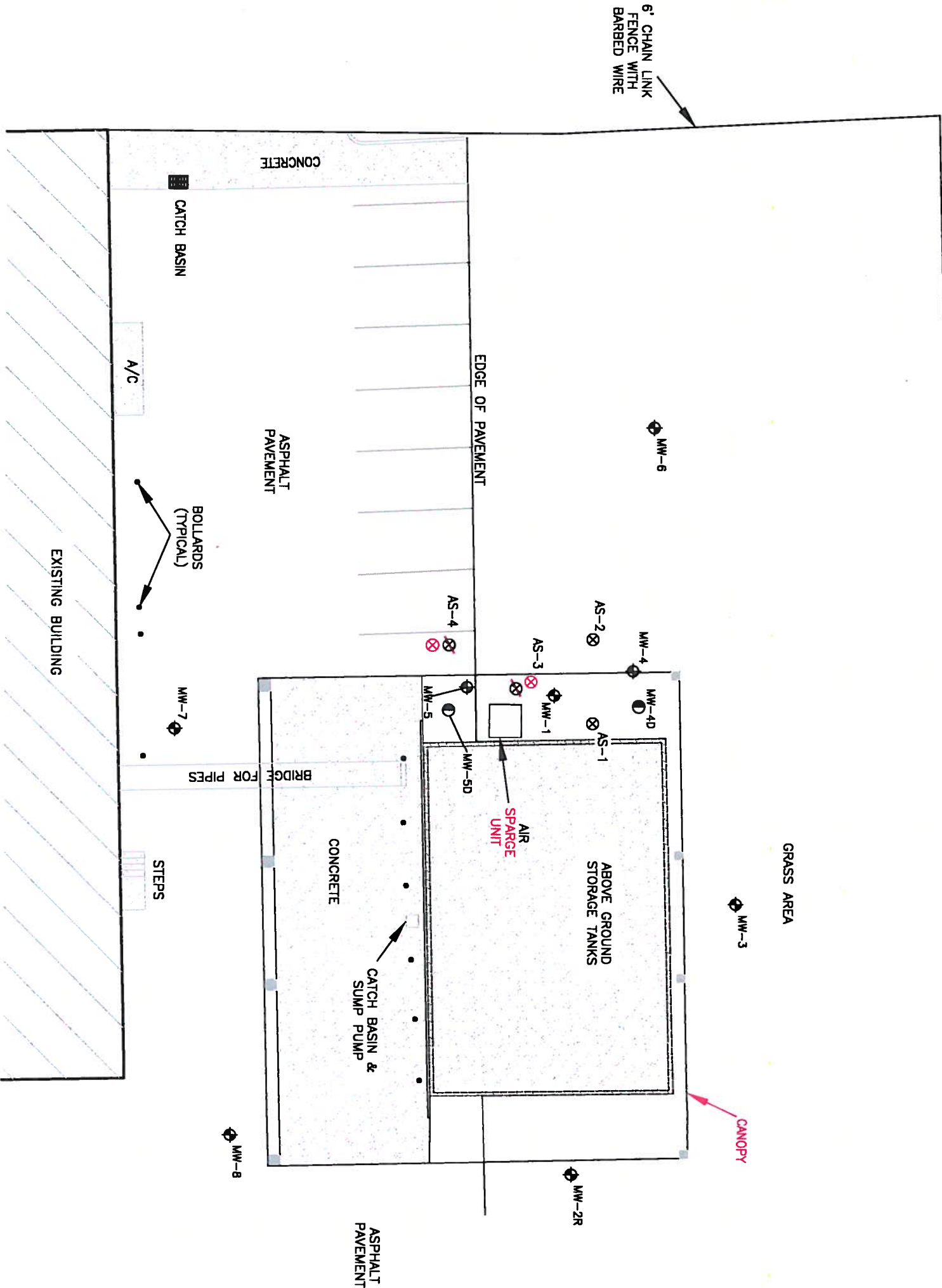
ECT

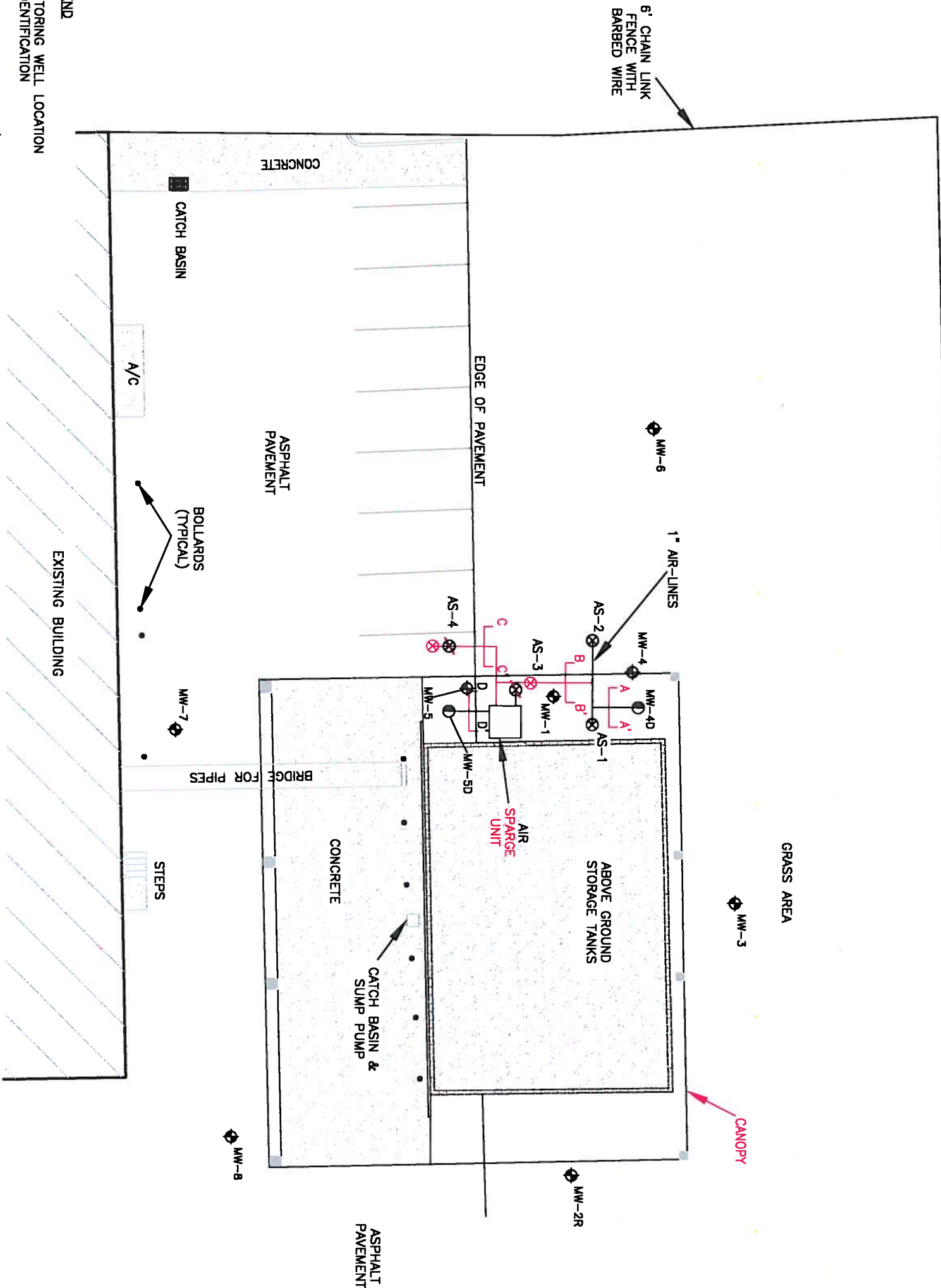
- LEGEND**
- MW-1  MONITORING WELL LOCATION & IDENTIFICATION
 - MW-4D  DEEP MONITORING WELL/SPARGING WELL LOCATION & IDENTIFICATION
 -  AIR SPARGING WELL

FLORIDA EB #5520

ECI
Environmental Consulting & Technology, Inc.
1408 NORTH WESTSHORE BOULEVARD, SUITE 115, TAMPA, FLORIDA 33607

SAFETY KLEEN SYSTEMS, INC.				SITE PLAN			
MEDLEY, FLORIDA							
FILE:	Site Plan	DESIGNED BY: MEF	PROJECT NO. 100666-2222-1100	NO.	DATE	REVISION	
DATE:	09/07/2011	DRAWN BY: JS	CHECKED BY:				
				Stanley T. Stuker, P.E., FL, LIC. 33251			
				9/23/11			
				SAFETY KLEEN SYSTEMS, INC.			
				8755 NW 95TH STREET, MEDLEY, FLORIDA			
				FDEP FACILITY NO. 984171694			
				DRAWING NUMBER			
				2 OF 5			



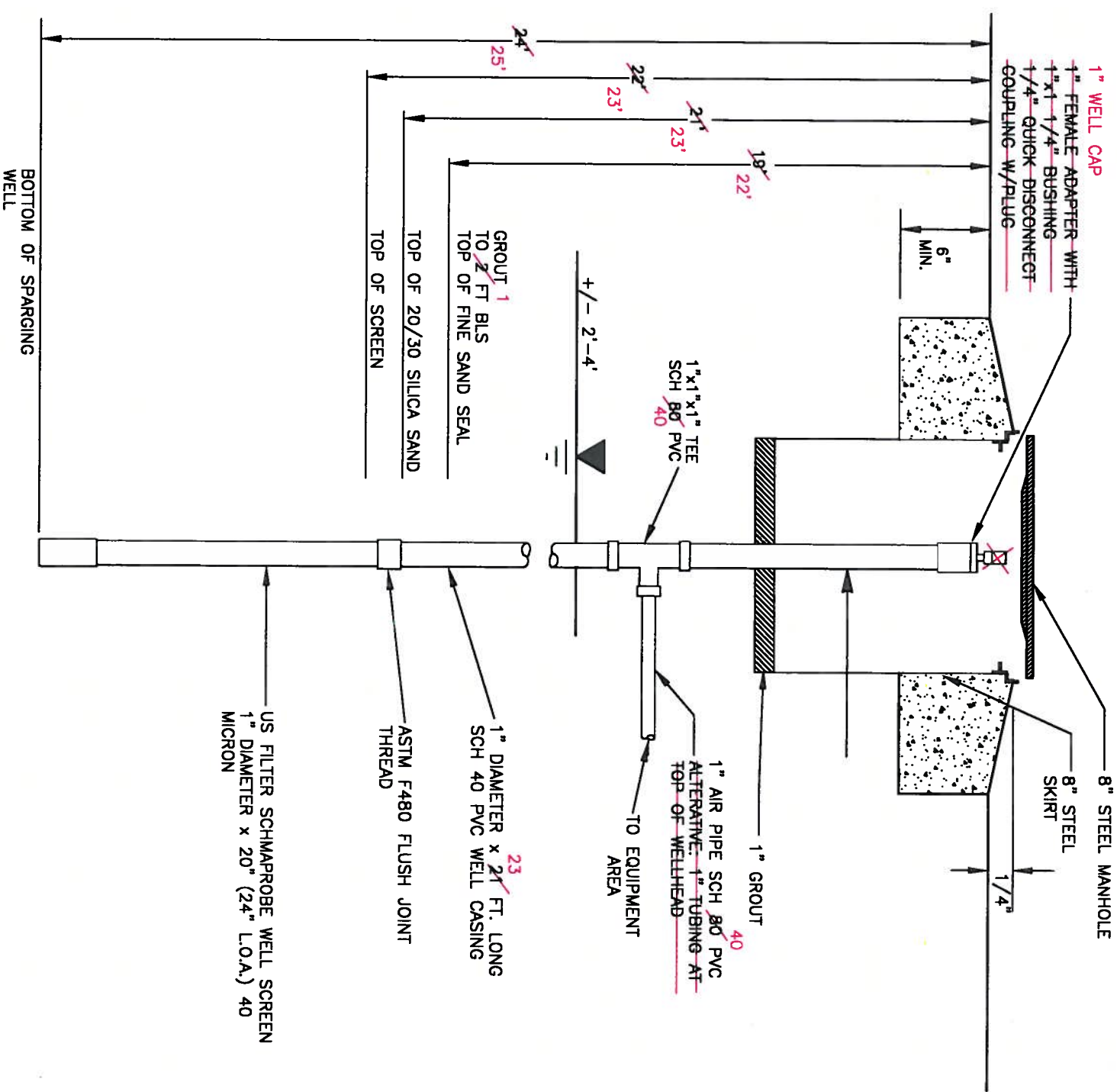


- LEGEND
- MW-1 MONITORING WELL LOCATION & IDENTIFICATION
 - MW-4D DEEP MONITORING WELL/SPARGING WELL LOCATION & IDENTIFICATION
 - AIR SPARGING WELL

FLORIDA EB #5520

SAFETY KLEEN SYSTEMS, INC. MEDLEY, FLORIDA				<div>9/23/11</div> Stanley T. Stokes, P.E., FL. LIC. 33251				REMEDATION SYSTEM PIPING LAYOUT AND WELL DESIGNATIONS			
FILE: Remediation	DESIGNED BY: MEF	PROJECT NO. 100666-2222-1100		NO.	DATE	REVISION		SAFETY KLEEN SYSTEMS, INC. 8755 NW 95TH STREET, MEDLEY, FLORIDA FDEP FACILITY NO. 984171694		DRAWING NUMBER 3 OF 5	
DATE: 09/07/2011	DRAWN BY: JS	CHECKED BY:									

Environmental Consulting & Technology, Inc.
1408 NORTH WESTSHORE BOULEVARD, SUITE 115, TAMPA, FLORIDA 33607



AIR SPARGING WELL (6 TOTAL)

- NOTE: DESIGN INCLUDED
2 EXISTING WELLS (MW-4D AND MW-5D)
FOR A TOTAL OF SIX WELLS

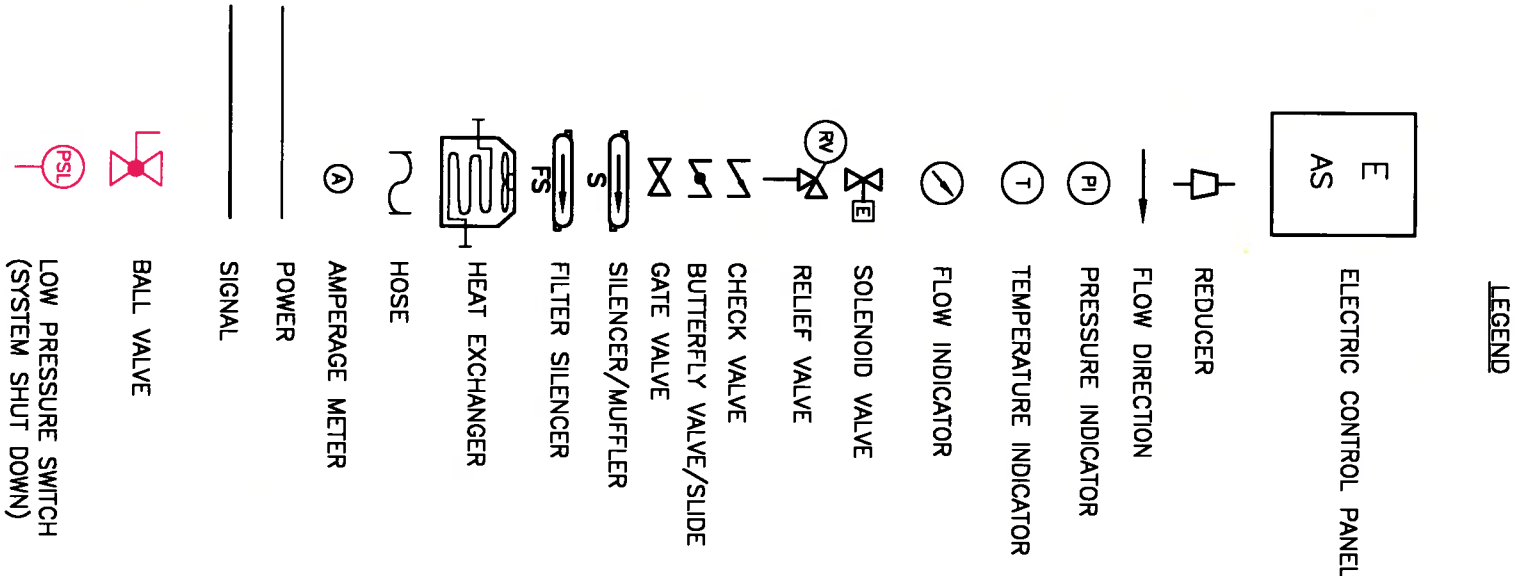
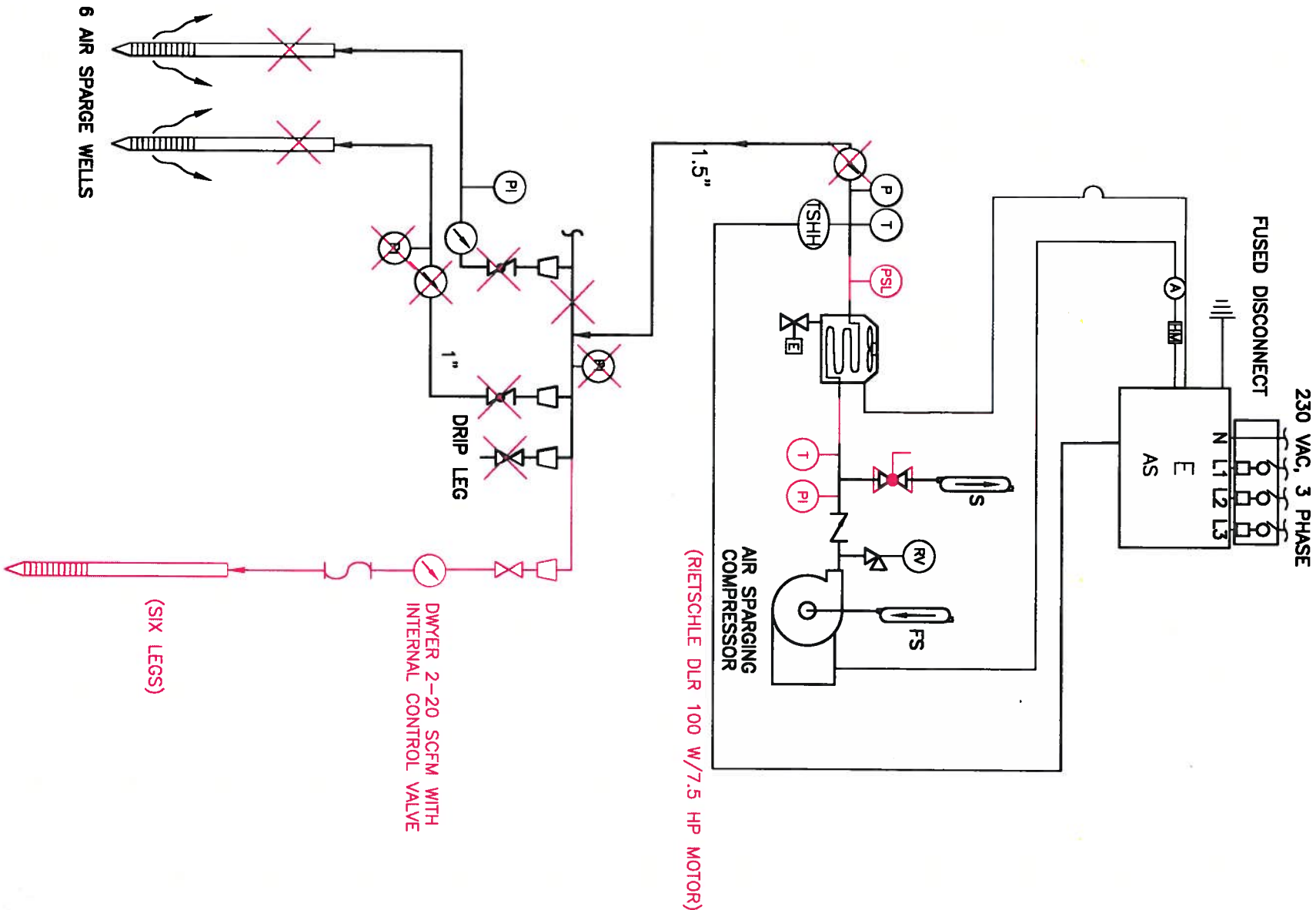
FLORIDA EB #5520

וְיָחִיד

Environmental Consulting & Technology, Inc.

1408 NORTH WESTSHORE BOULEVARD, SUITE 115, TAMPA, FLORIDA 33607

SAFETY KLEEN SYSTEMS, INC.					
FILE:	Constr Detail	DESIGNED BY: MEF	PROJECT NO. 100866-2222-1100	N.O.	DATE
DATE:	09/07/2011	DRAWN BY: JS	CHECKED BY:	REVISION	
				Stanley J. Stokes, P.E., Ft. LC. 33251	
AIR SPARGE CONSTRUCTION DETAILS					
SAFETY KLEEN SYSTEMS, INC. 8755 NW 95TH STREET, MEDLEY, FLORIDA FDPE FACILITY NO. 984171694				DRAWING NUMBER 4 OF 5	



FLORIDA EB #5520

SAFETY KLEEN SYSTEMS, INC. MEDLEY, FLORIDA				TYPICAL PROCESS AND INSTRUMENTAL DIAGRAM			
FILE: PID		DESIGNED BY: MEF		PROJECT NO. 100666-2222-1100		NO. DATE REVISION	
DATE: 09/07/2011		DRAWN BY: JS		CHECKED BY:		Stanley T. Stokes, P.E., FL. LIC. 33251	
Environmental Consulting & Technology, Inc.				SAFETY KLEEN SYSTEMS, INC.			
1408 NORTH WESTSHORE BOULEVARD, SUITE 115, TAMPA, FLORIDA 33607				8755 NW 95TH STREET, MEDLEY, FLORIDA			
				FDEP FACILITY NO. 984171694			
				DRAWING NUMBER 5 OF 5			