

Received

FEB 07 2013

BSHW

Raider Used Oil Tank Summary
Opa Locka Florida Facility
FLR 000143891

Tank Number	Capacity (gallons)	Construction	Installed Date	Contents
1	35,000	Carbon Steel	June, 2007	Used Oil ✓
2	35,000	Carbon Steel	June, 2007	Used Oil ✓
3	35,000	Carbon Steel	June, 2007	Used Oil ✓
4	35,000	Carbon Steel	June, 2007	Used Oil ✓
5	25,000	Carbon Steel	June, 2007	Used Oil ✓
6	25,000	Carbon Steel	June, 2007	Petroleum Contact Water ✓
7	25,000	Carbon Steel	June, 2007	Used Oil Process Tank ✓
9	3,000	Carbon Steel	June, 2007	Used Oil Process Tank ✓
10	6,000	Carbon Steel	June, 2007	Used Oil Process Tank ✓
11	6,000	Carbon Steel	June, 2007	Used Oil Process Tank ✓
16	27,000	Carbon Steel	August, 2011	Used Oil Process Tank ✓
Total Capacity		257,000		

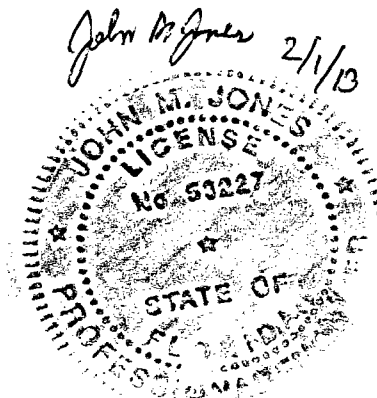
Notes:

1. Storage Tank Contents vary based upon market.

RECEIVED
RCRA

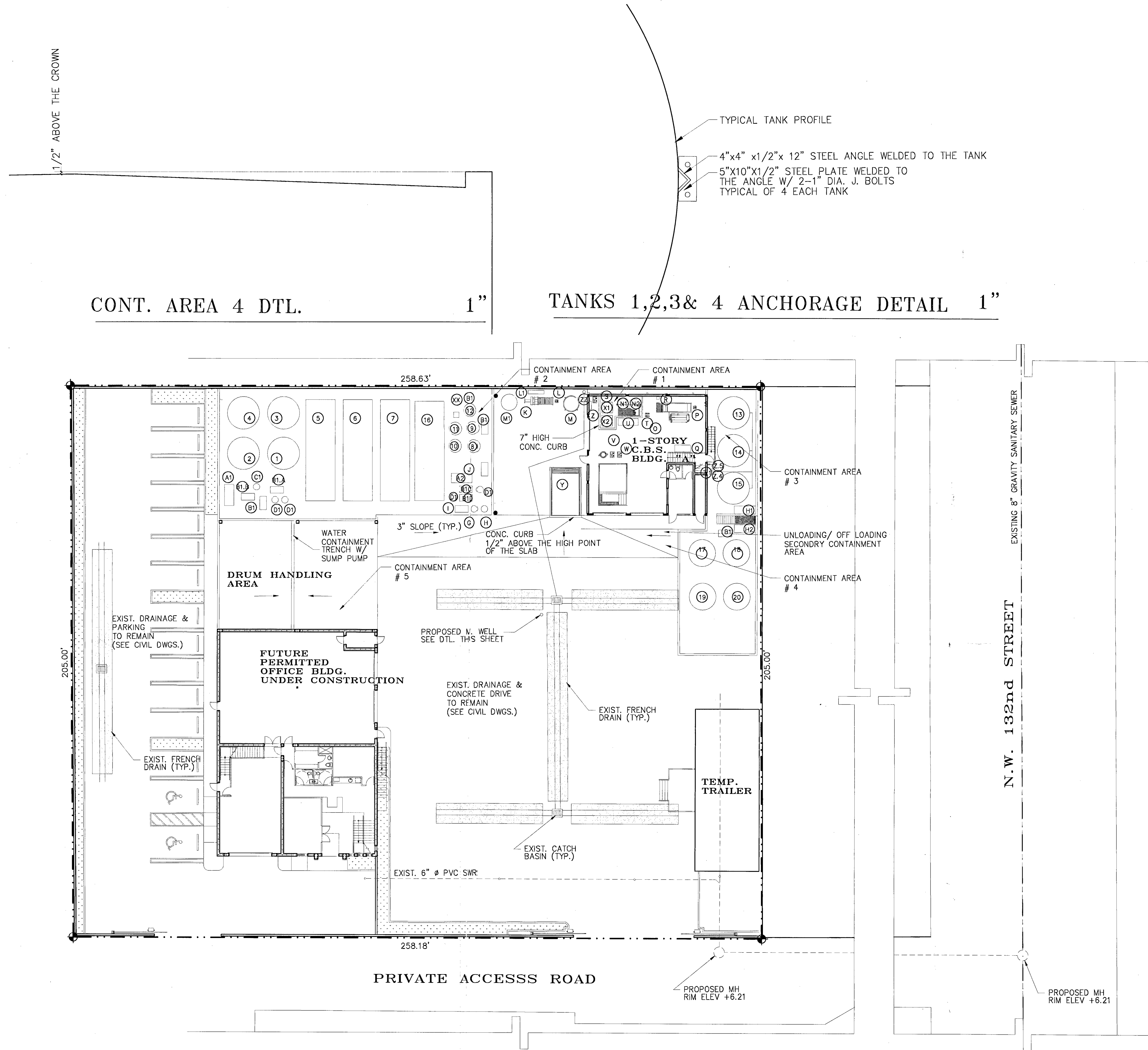
FEB 11 2013

Hazardous Waste Regulation



EXISTING EQUIPMENT LEGEND	
1	35,000 GAL. CARBON STEEL TANK (USED OIL) ✓
2	35,000 GAL. CARBON STEEL TANK (USED OIL) ✓
3	35,000 GAL. CARBON STEEL TANK (USED OIL) ✓
4	35,000 GAL. CARBON STEEL TANK (USED OIL) ✓
5	25,000 GAL. CARBON STEEL TANK (USED OIL) ✓
6	25,000 GAL. CARBON STEEL TANK (PETROLEUM CONTACT WATER) ✓
7	25,000 GAL. CARBON STEEL TANK (USED OIL PROCESS TANK)
8	3,000 GAL. CARBON STEEL TANK (HEATER FUEL/ OIL TANK)
9	3,000 GAL. CARBON STEEL TANK (USED OIL PROCESS TANK)
10	6,000 GAL. CARBON STEEL TANK (USED OIL PROCESS TANK)
11	6,000 GAL. CARBON STEEL TANK (USED OIL PROCESS TANK)
12	3,000 GAL. CARBON STEEL TANK (CARBON POLISH TANK)
13	20,000 GAL. FIBERGLASS TANK (EQUALIZATION TANK)
14	20,000 GAL. FIBERGLASS TANK (PROCESSED WATER TANK)
15	20,000 GAL. FIBERGLASS TANK (EFFLUENT WATER TANK)
G	20"ø BASKET STRAINER #1
H	20"ø BASKET STRAINER #2
I	4"ø RECEIVING TRANSFER PUMP #1
J	4"ø RECEIVING TRANSFER PUMP #2
K	15 C.FEET FILTER PRESS
L	2"ø DIAPHRAGM SLUDGE TRANSFER PUMP #1
M	2,850 GAL. CONE BOTT. SLUDGE TANK
N1	1,000 GAL. (POLY) CLAY MIXING TANK
N2	1,000 GAL. (POLY) POLYMER MIXING TANK
O	DIFFUSED AIR FLOATATION UNIT
P	2"ø DIAPHRAGM SLUDGE TRANSFER PUMP #2
Q	30 H.P. SCREW TYPE COMPRESSOR
R	ELECTRONIC FLOW METER
S	3"ø TRANSFER PUMP #1
T	POLYMER TRANSFER PUMPS
U	DRUM CONTAINMENT
V	3"ø TRANSFER PUMP #2
W	3"ø TRANSFER PUMP #3
Y	TRUCK WASH OUT AREA
Z	CONTROL PANEL
Z.1	SAMPLING POINT
Z.4	AFFLUENT METER
Z.5	POINT OF DISCHARGE
A1	HEATER
A2	HEATER
B1	PUMP
B1.A	PUMP INBOUND
B1.B	PUMP OUTBOUND
B1.C	PUMP INBOUND
B1.D	PUMP OUTBOUND
C1	SHAKER
D1	FILTER
H1	STRIPPER
H2	STRIPPER
M1	CONDENSER (3,000 GAL. CARBON STEEL TANK)
X1	CHEMICAL TOTE 250-350 GAL. (COAGULANT)
X2	CHEMICAL TOTE 250-350 GAL. (COUSTIC)
XX	2" SUBMERSIBLE PUMP FOR CONTAINMENT WATER
ZZ	DOWNSPOUT

NEW EQUIPMENT LEGEND	
L1	OIL WATER SEPARATOR
16	27,000 GAL. USED OIL PROCESS TANK
17	15,000 GAL. CARBON STEEL TANK (AIR STRIPPER EFFLUENT)
18	15,000 GAL. CARBON STEEL TANK (AIR STRIPPER EFFLUENT)
19	15,000 GAL. CARBON STEEL TANK (TREATED EFFLUENT FOR TESTING)
20	15,000 GAL. CARBON STEEL TANK (TREATED EFFLUENT FOR TESTING)
A2	HEATER
SP1	SAMPLING POINT 1
SP2	SAMPLING POINT 2
SP3	SAMPLING POINT 3
SP4	SAMPLING POINT 4



NOTE:

 $1'' = 20'$

FATHI ARCHITECTS, INC.

AA 0003068
1B 0007131
**ARCHITECTS
INTERIORS
PLANNERS**
5397 ORANGE DRIVE
SUITE 205
DAVIE, FLORIDA 33314
TEL: (954) 752-8230
FAX: (954) 752-8250
www.fathiarchitects.com

CONSULTANT:

OWNER:
Mr. STEVE OBST

REVISIONS		DATE	
	BUILDING DEPARTMENT	12/11/07	A.R.O.
	CLIENT	10/07/09	R.R.

DATE:	12/02/05
SCALE:	AS SHOWN
DRAWN:	R.R.
CHECKED:	A.F.
COMMISSION NO.:	25005

RECEIVED
RCRA
FEB 11 2013
Hazardous Waste Regulation