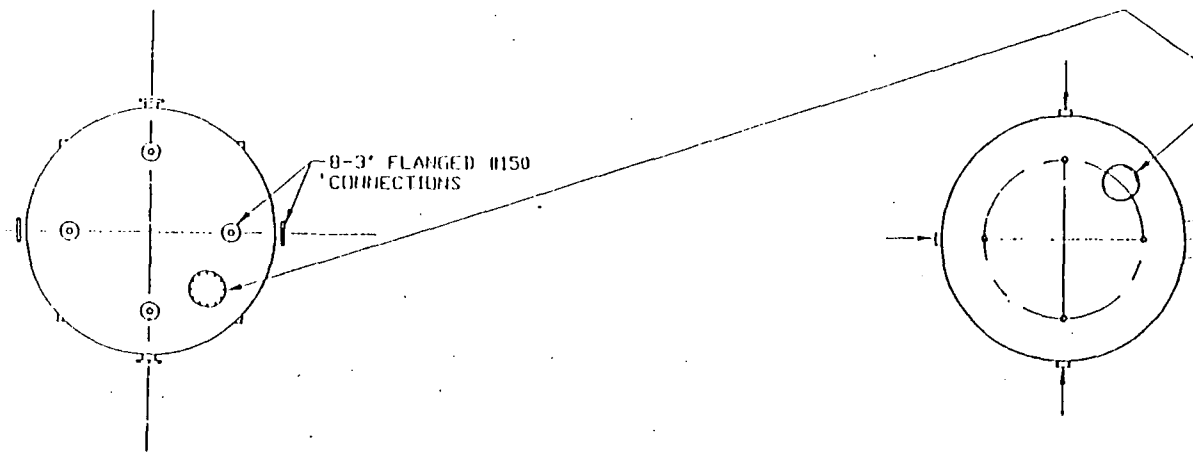
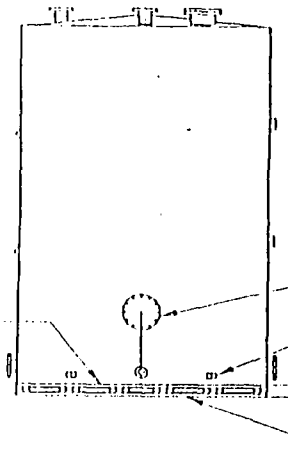


THIS MANHOLE IS PROVIDED WITH LONG BOLTS TO PERMIT EMERGENCY RELIEF VENTING. DO NOT REPLACE WITH SHORTER BOLTS.

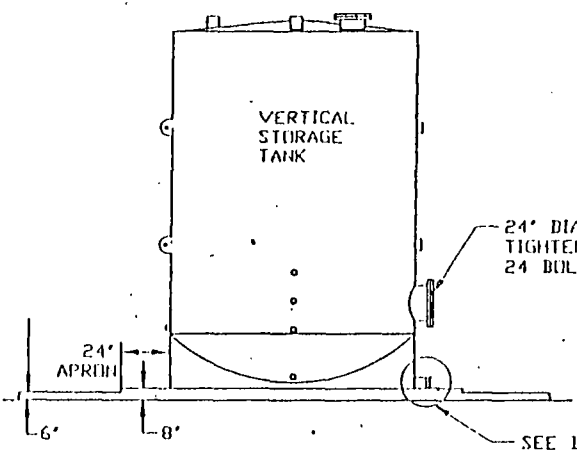


24\"/>

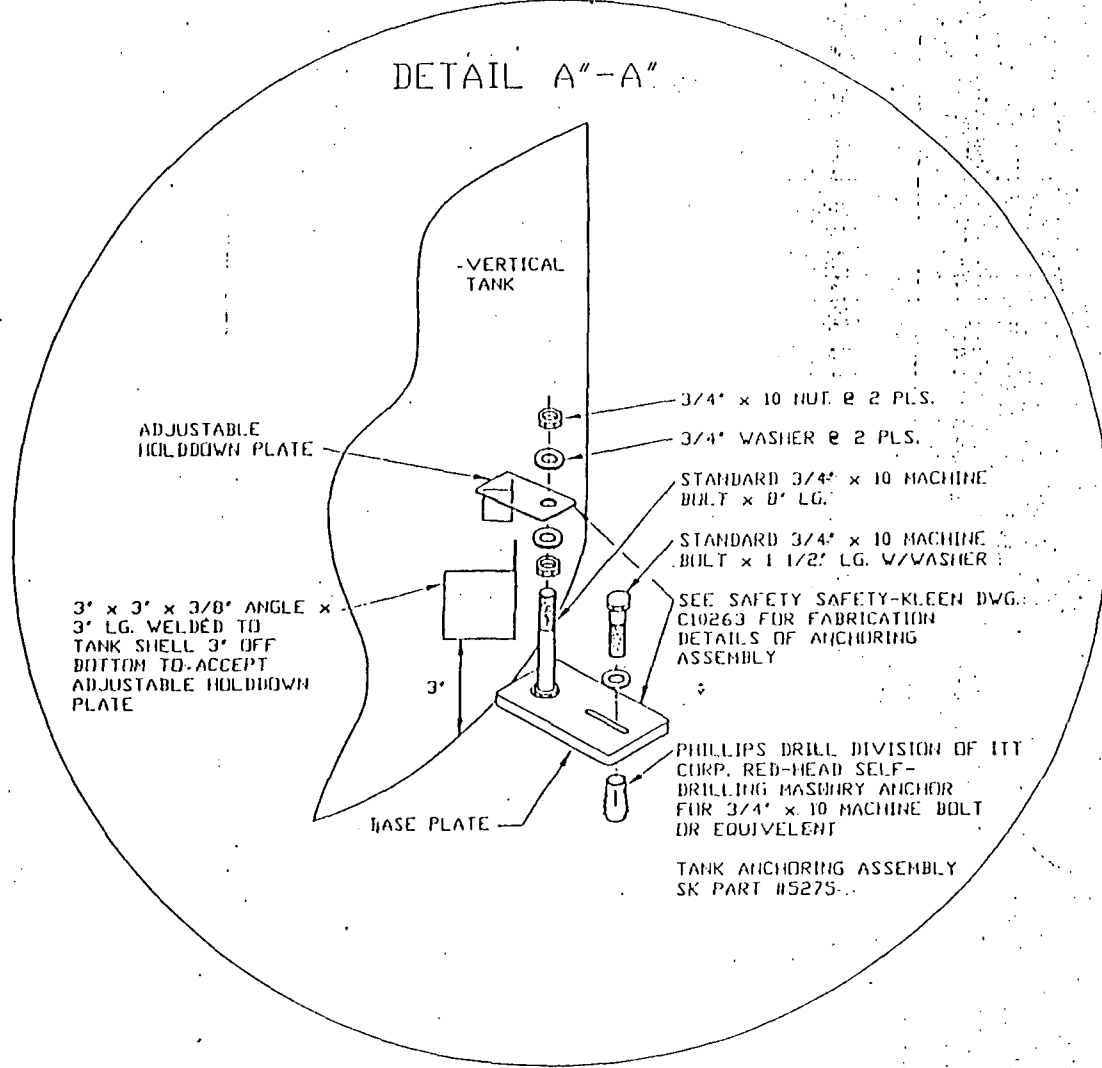
INSTALL ANCHORING UNIT @ 4 PLACES - 90° APART AS SHOWN BY ARROWS.



24\"/>



24\"/>



ADJUSTABLE HOLDDOWN PLATE
 3\"/>

GENERAL NOTES

- 1 INSTALLATION OF ANCHORING ASSEMBLY REQUIRES THAT A 3\"/>
- 2 SAFETY-KLEEN WILL PROVIDE 4 ANCHORING ASSEMBLIES PER TANK OR DRAWINGS OF FABRICATION DETAILS FOR LOCAL FABRICATION.
- 3 LOCATE & MARK MASONRY ANCHOR LOCATION THROUGH SLOTTED HOLES IN BASE PLATE. ANCHORING ASSEMBLY THEN REMOVE ANCHORING ASSEMBLY & INSTALL SELF DRILLING MASONRY ANCHOR IN EACH OF THE 4 MARKED LOCATIONS FOR EACH TANK.
- 4 REPOSITION ANCHORING ASSEMBLY & BOLT TO ANCHOR IN CONCRETE & ADJUST THE HOLD DOWN PLATE FOR A SNUG FIT ON TANK ANGLE CATCH.

Figure II.C:2-4(c)

NO.	DESCRIPTION	BY	CHKD	DATE

APPROVED BY ME FOR INCLUSION IN ENVIRONMENTAL PERMIT APPLICATIONS ONLY. IT IS NEITHER ENDORSED NOR IS IT TO BE USED FOR ANY OTHER PURPOSE.

SAFETY-KLEEN CORP.
 777 BIG DODDER ROAD, ELGIN, ILLINOIS 60120
 PHONE 312/781-1111

DATE: 11/11/82
 DRAWING NO.: C10262