



Picture 1: In-Processing Area Dock Doors lacking PCB Markings



Picture 2: In-Processing Area Dock Doors lacking PCB Markings



Picture 3: PCB contaminated transformer in the In-Processing Area



Picture 4: PCB contaminated transformer (ID #A28995) in the In-Processing Area



Picture 5: Transformers in the In-Processing Area



Picture 6: Transformers in the In-Processing Area



Picture 7: PCB transformers in the In-Processing Area



Picture 8: Container for the accumulation of laboratory RCRA regulated waste and PCB regulated waste





Picture 9: Container for the accumulation of laboratory RCRA regulated waste and PCB regulated waste



Picture 10: Container for the accumulation of laboratory RCRA regulated waste and PCB regulated waste



Picture 11: Container for the accumulation of laboratory RCRA regulated waste and PCB regulated waste



Picture 12: Redragon hazardous waste sludge containers and spent solvents in the PCB Ancillary Storage Area



Picture 13: Redragon hazardous waste sludge container in the PCB Ancillary Storage Area



Picture 14: View of the label on the Redragon hazardous waste sludge containers in the PCB Ancillary Storage Area



Picture 15: Hazardous waste containers (Redragon sludge and spent solvents) in the PCB Ancillary Storage Area



Picture 16: Hazardous waste containers (Redragon sludge and spent solvents) in the PCB Ancillary Storage Area





Picture 17: Redragon hazardous waste sludge container in the PCB Ancillary Storage Area



Picture 18: PCB and RCRA regulated hazardous waste containers in the PCB Ancillary Storage Area



Picture 19: PCB and RCRA regulated hazardous waste containers in the PCB Ancillary Storage Area



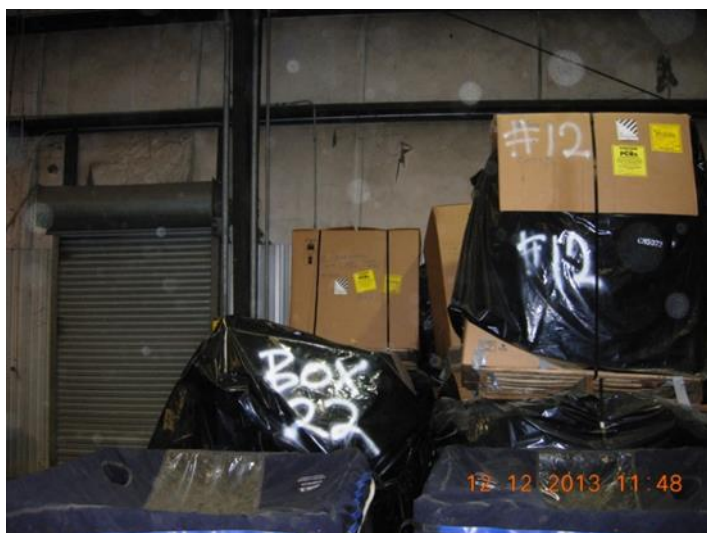
Picture 20: PCB and RCRA regulated hazardous waste containers in the PCB Ancillary Storage Area



Picture 21: PCB and RCRA regulated hazardous waste containers in the PCB Ancillary Storage Area



Picture 22: PCB and RCRA regulated hazardous waste containers in the PCB Ancillary Storage Area



Picture 23: PCB and RCRA regulated hazardous waste containers in the PCB Ancillary Storage Area



Picture 24: PCB and RCRA regulated hazardous waste containers in the PCB Ancillary Storage Area





Picture 25: View of the laboratory waste (PCB and RCRA regulated waste) inside the cardboard containers in the PCB Ancillary Storage Area



Picture 26: View of the laboratory waste (PCB and RCRA regulated waste) inside the cardboard containers in the PCB Ancillary Storage Area



Picture 27: View of the PCB storage tanks in the PCB Room



Picture 28: View of the PCB storage tanks in the PCB Room



Picture 29: Cracks on the epoxy coating of the PCB Room concrete floor



Picture 30: Cracks on the epoxy coating of the PCB Room concrete floor



Picture 31: Cracks on the epoxy coating of the PCB Room concrete floor



Picture 32: Cracks on the epoxy coating of the PCB Room concrete floor





Picture 33: PCB transformers stored in the PCB Room



Picture 34: Cracks on the epoxy coating of the PCB Room concrete floor



Picture 35: View of the PCB containers in the PCB Room



Picture 36: View of PCB containers in the PCB Room and wet stain on the concrete floor



Picture 37: View of PCB containers in the PCB Room



Picture 38: PCB markings on the door to access the PCB storage room



Picture 39: SMRO staging area and conveyor that feeds the shear press



Picture 40: SMRO staging area and conveyor that feeds the shear press





Picture 41: SRMO unit



Picture 42: Scrap metal recovered in the SRMO



Picture 43: Ash from the SRMO in the accumulation container kept in the SRMO Area



Picture 44: Ash from the SRMO on the floor at the SRMO Area



Picture 45: Contaminated PCB oil open containers stored in the SRMO Area



Picture 46: Contaminated PCB oil open containers stored in the SRMO Area



Picture 47: Draining table in the SRMO Area to drain PCB contaminated equipment



Picture 48: Contaminated PCB oil open containers stored in the SRMO Area





Picture 49: Exterior wall of the SRMO Area with no PCB markings



Picture 50: Exterior wall of the SRMO Area with no PCB markings



Picture 51: Exterior wall of the SRMO Area with no PCB markings



Picture 52: Unlabeled used oil container stored in the Outside Transformer Area



Picture 53: Unlabeled used oil container stored in the Outside Transformer Area



Picture 54: Used oil container stored in the Outside Transformer Area with faded "Used Oil" label



Picture 55: Paint waste SAA container in the Paint Area lacking hazardous waste marking and not properly closed



Picture 56: Unlabeled Paint SAA container stored near the outside paint booth





Picture 57: Paint waste SAA container in the Paint Area lacking hazardous waste marking and not properly closed



Picture 58: Paint filters and spent blasting media SAA containers outside the Paint Area



Picture 59: Undated and unlabeled Redragon residue 55-gallon containers stored near the Redragon Oil Processing Unit



Picture 60: Undated and unlabeled Redragon residue 55-gallon containers stored near the Redragon Oil Processing Unit



Picture 61: Undated and unlabeled Redragon residue 55-gallon containers stored near the Redragon Oil Processing Unit