

Kruchell, Carrie L.

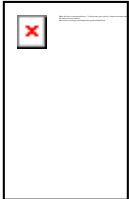
From: Stuart Stapleton <Stuart.Stapleton@usecology.com>
Sent: Thursday, February 11, 2016 1:13 PM
To: Kruchell, Carrie L.; Honey, Kelly; Knauss, Elizabeth
Cc: Gene Cieply; Ken Dean; Ed Thornlimb; Scott Schodowski
Subject: Revised Drawings
Attachments: Figure 6 Boundary Survey.pdf; Figure 7 Existing Facility Layout.pdf; Figure 9 Traffic Flow.pdf; Figure 10 Site Security.pdf; Figure 11 Emergency Preparedness Plan.pdf; Figure 13 Drainage & Stormwater Controls.pdf; Figure 14 Container Storage Building & Covered Processing Area Layout .pdf; Figure 15 Waste Processing Building Layout.pdf; Figure 16 Waste Management Area Locations.pdf; Figure 17 Solid Waste Management Units.pdf

Follow Up Flag: Follow up
Flag Status: Flagged

Carrie,

Attached are the revised drawings we spoke about on Tuesday. Please let me know if you have any comments or questions concerning this matter.

Stuart Stapleton
EHS Manager



stuart.stapleton@usecology.com

p: 813.319.3423 | c: 813.770.9954 | f: 813.626.7451

7202 East Eighth Ave. Tampa, FL 33619

Emergency Response: 800.839.3975

Customer Service: 800.592.5489



SURVEYOR'S NOTES:

- 1) THIS IS A TOPOGRAPHIC SURVEY ONLY, MADE ON THE GROUND UNDER THE SUPERVISION OF A FLORIDA REGISTERED LAND SURVEYOR AND MAPPER, AND MEETS THE MINIMUM TECHNICAL STANDARD FOR HORIZONTAL AND VERTICAL ACCURACY FOR THIS PROPERTY'S EXPECTED USE. THIS IS NOT A BOUNDARY SURVEY.
- 2) ELEVATIONS SHOWN HEREON ARE ASSUMED. ELEVATIONS ARE REFERENCED TO A PREVIOUS SURVEY PREPARED BY NORTHWEST ENGINEERING AND PROVIDED BY THE CLIENT. (SEE NOTE 9, FOR APPROXIMATE PROPERTY LINE INFORMATION)
- BENCHMARK 1 FOUND RAILROAD SPIKE, ELEV. = 23.94' (ASSUMED)
- BENCHMARK 2 SET PK/N&D LB6901 ELEV. = 26.90' (ASSUMED)
- 3) THIS SURVEY WAS CONDUCTED FOR THE PURPOSE OF TOPOGRAPHIC SURVEY ONLY, AND IS NOT INTENDED TO DELINEATE THE REGULATORY JURISDICTION OF ANY FEDERAL, STATE, REGIONAL OR LOCAL AGENCY, BOARD, COMMISSION OR OTHER SIMILAR ENTITY.
- 4) THE INTENT OF THIS SURVEY IS TO DEPICT EXISTING IMPROVEMENTS AND TOPOGRAPHIC FEATURES IN AND ADJACENT TO THE SOLIDIFICATION BUILDING. THIS SURVEY WAS CONDUCTED OVER THE AREA DEPICTED WITHIN THE CLOUD ONLY. ALL OTHER DATA DEPICTED HEREON WAS PROVIDED BY THE CLIENT.
- 5) THIS SURVEY WAS CONDUCTED WITHOUT THE BENEFIT OF AN ABSTRACT OF TITLE. THEREFORE, THERE MAY BE OTHER EASEMENTS, RIGHTS-OF-WAY, SETBACK LINES, AGREEMENTS, RESERVATIONS, RESTRICTIONS, OR OTHER SIMILAR MATTERS OF PUBLIC RECORD, NOT DEPICTED ON THIS SURVEY.
- 6) NO UNDERGROUND UTILITIES, UNDERGROUND ENCROACHMENTS OR BUILDING FOUNDATIONS WERE OBSERVED AS A PART OF THIS SURVEY, UNLESS OTHERWISE SHOWN. SHRUBS WERE NOT LOCATED, UNLESS OTHERWISE SHOWN.
- 7) THIS SURVEY NOT VALID WITHOUT THE SIGNATURE AND ORIGINAL RAISED SEAL OF A FLORIDA LICENSED SURVEYOR AND MAPPER. THIS SURVEY IS NOT FULLY COMPLETE WITHOUT SHEETS 1 AND 2.
- 8) THE FIELD SURVEY WAS COMPLETED ON 3/12/13.
- 9) APPROXIMATE PROPERTY LINE INFORMATION SHOWN ON HEREON, WAS OBTAINED FROM A SURVEY PREPARED BY NORTHWEST ENGINEERING, INC., ORDER NO. 0704-039, DATED 4-18-2007 (AS PROVIDED BY THE CLIENT)

LEGEND

- OAK TREE & SIZE
FIRE HYDRANT
GAS MARKER
LIGHT POLE
MONITORING WELL
SIGN
UTILITY POLE
WATER METER
WATER VALVE
STORM DRAIN
CHAINLINK FENCE
GATE
P.L.
MEG
- CONCRETE
ASPHALT
BUILDING
SET PARKER KAYLON NAIL & DISK No. LB6901
SET 5/8" CAPPED IRON ROD No. LB6901
FOUND CAPPED IRON ROD
FOUND IRON ROD
LICENSED BUSINESS
NUMBER
BUILDING
MORE OR LESS
ELEVATION
CONTOUR LINE AND ELEVATION

The information included on this graphic representation has been compiled from a variety of sources and is subject to change without notice. NOVA makes no representations or warranties, express or implied, as to accuracy, completeness, timeliness, or rights to the use of such information. This document is not intended for use as a land survey product nor is it designed or intended as a construction design document. The use or misuse of the information contained on this graphic representation is at the sole risk of the party using or missing the information.



1226 Tech Blvd
Tampa, FL 33619
office: 813.623.3100
fax: 813.623.3545

www.usanova.com

EQ FLORIDA, INC.
FIGURE 6 - BOUNDARY SURVEY

Project:

EQ Florida, Inc.
7202 E. 8th Avenue
Tampa, Florida

Client:

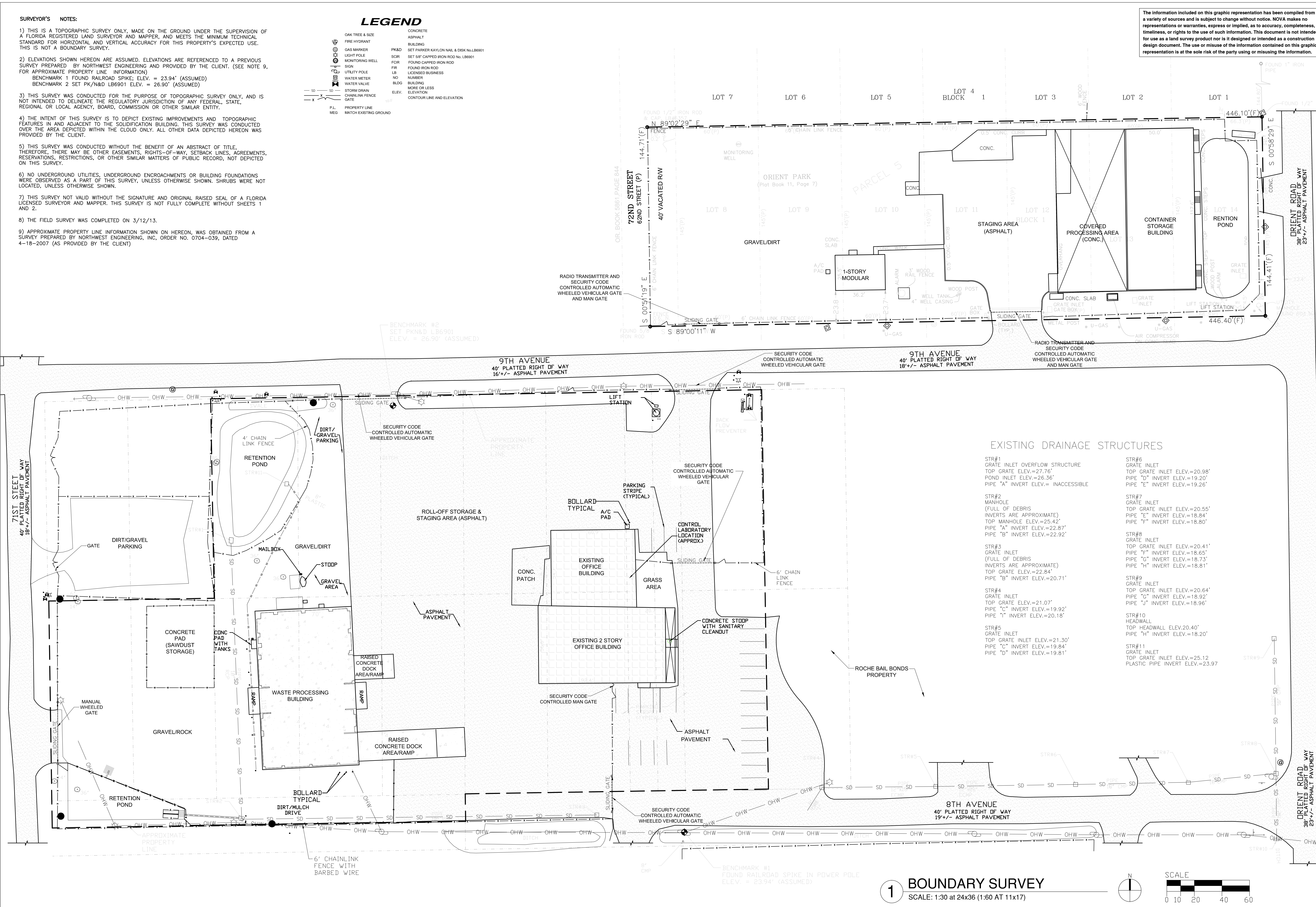
EQ Florida, Inc.
7202 E. 8th Avenue
Tampa, Florida

DATE	REVISION
Project No.	10706-3015106
Checked:	CBP
Drawn:	CL
Date:	01-12-2016
Sheet Title:	

Boundary
Survey

Sheet No.

6



The information included on this graphic representation has been compiled from a variety of sources and is subject to change without notice. NOVA makes no representations or warranties, express or implied, as to accuracy, completeness, timeliness, or rights to the use of such information. This document is not intended for use as a land survey product nor is it designed or intended as a construction design document. The use or misuse of the information contained on this graphic representation is at the sole risk of the party using or misusing the information.



1226 Tech Blvd
Tampa, FL 33619
office: 813.623.3100
fax: 813.623.3545

www.usanova.com

EQ FLORIDA, INC.

FIGURE 7 - EXISTING FACILITY LAYOUT

Project:
EQ Florida, Inc.
7202 E. 8th Avenue
Tampa, Florida

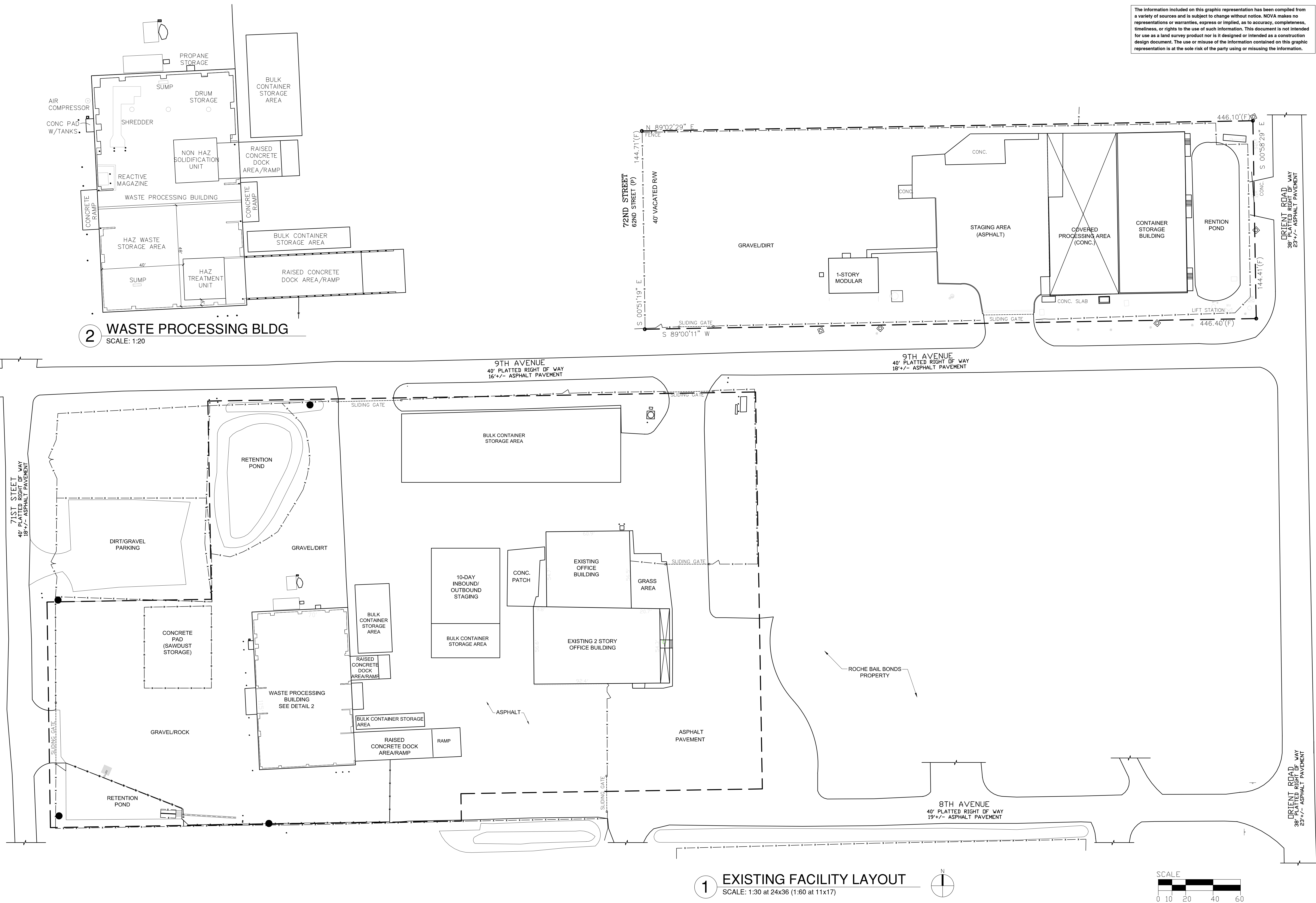
Client:
EQ Florida, Inc.
7202 E. 8th Avenue
Tampa, Florida

DATE	REVISION

Project No. 10706-3015106
Checked: CBP
Drawn: CL
Date: 01-12-2016
Sheet Title:

Existing Facility
Flow

Sheet No.



The information included on this graphic representation has been compiled from a variety of sources and is subject to change without notice. NOVA makes no representations or warranties, express or implied, as to accuracy, completeness, timeliness, or rights to the use of such information. This document is not intended for use as a land survey product nor is it designed or intended as a construction design document. The use or misuse of the information contained on this graphic representation is at the sole risk of the party using or misusing the information.



1226 Tech Blvd
Tampa, FL 33619
office: 813.623.3100
fax: 813.623.3545

www.usanova.com

EQ FLORIDA, INC.

FIGURE 9 - TRAFFIC FLOW

Project:
EQ Florida, Inc.
7202 E. 8th Avenue
Tampa, Florida

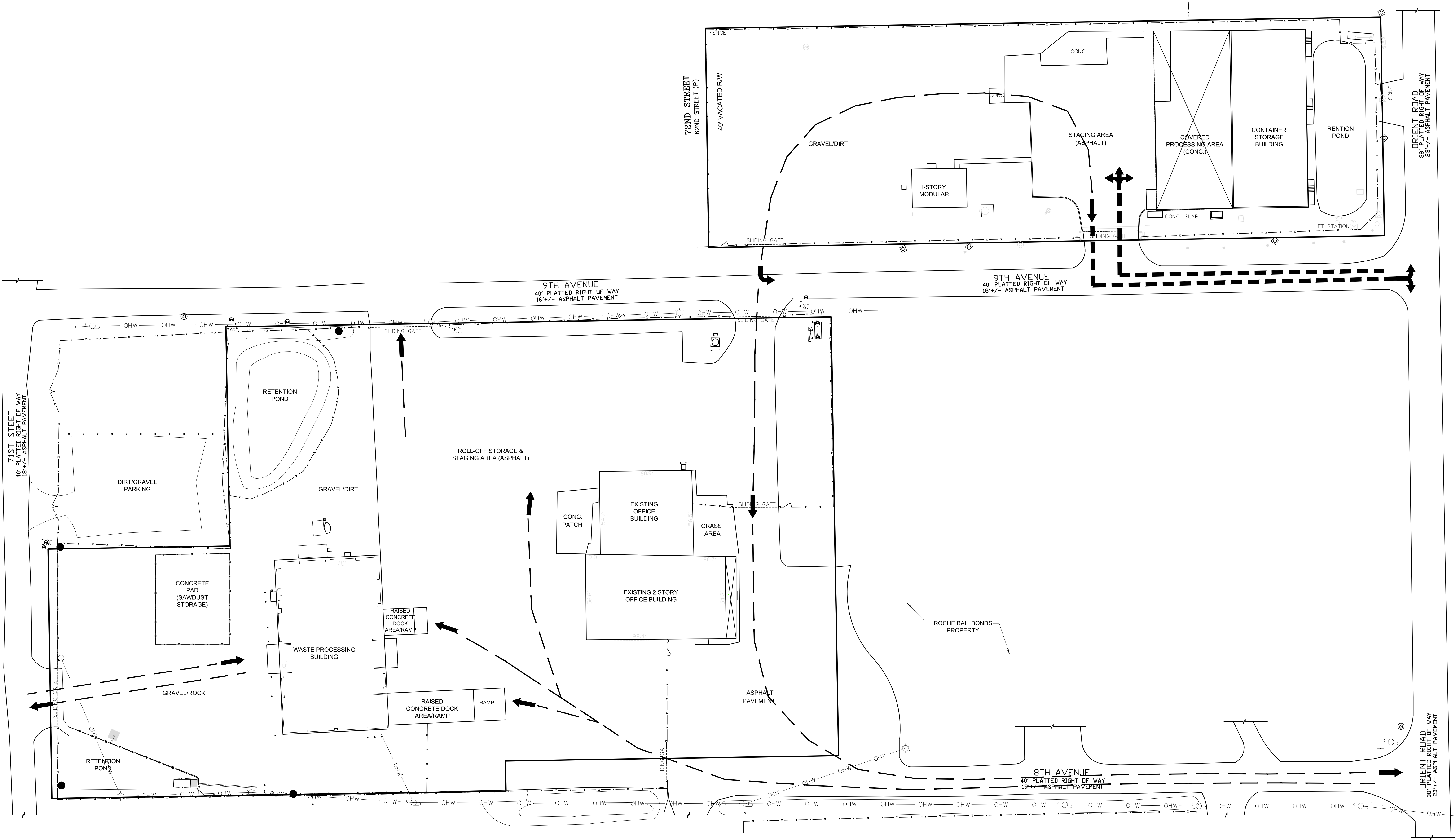
Client:
EQ Florida, Inc.
7202 E. 8th Avenue
Tampa, Florida

DATE	REVISION

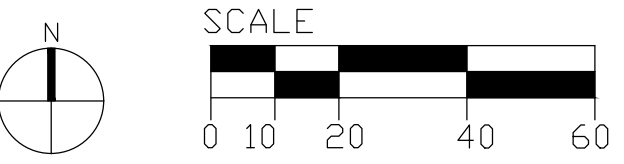
Project No. 10706-3015106
Checked: CBP
Drawn: CL
Date: 01-12-2016
Sheet Title:

Traffic Flow

Sheet No. 9



1 TRAFFIC FLOW
SCALE: 1:30 at 24x36 (1:60 AT 11x17)



LEGEND

(WS) WARNING SIGN LOCATIONS
"DANGER UNAUTHORIZED PERSONNEL KEEP OUT"
(IN ENGLISH AND SPANISH)

--- PROPERTY LINE

- - - FENCE
ALL GATES REMAIN LOCKED
AND CLOSED UNLESS IN USE.

The information included on this graphic representation has been compiled from a variety of sources and is subject to change without notice. NOVA makes no representations or warranties, express or implied, as to accuracy, completeness, timeliness, or rights to the use of such information. This document is not intended for use as a land survey product nor is it designed or intended as a construction design document. The use or misuse of the information contained on this graphic representation is at the sole risk of the party using or misusing the information.



1226 Tech Blvd
Tampa, FL 33619
office: 813.623.3100
fax: 813.623.3545

www.usanova.com

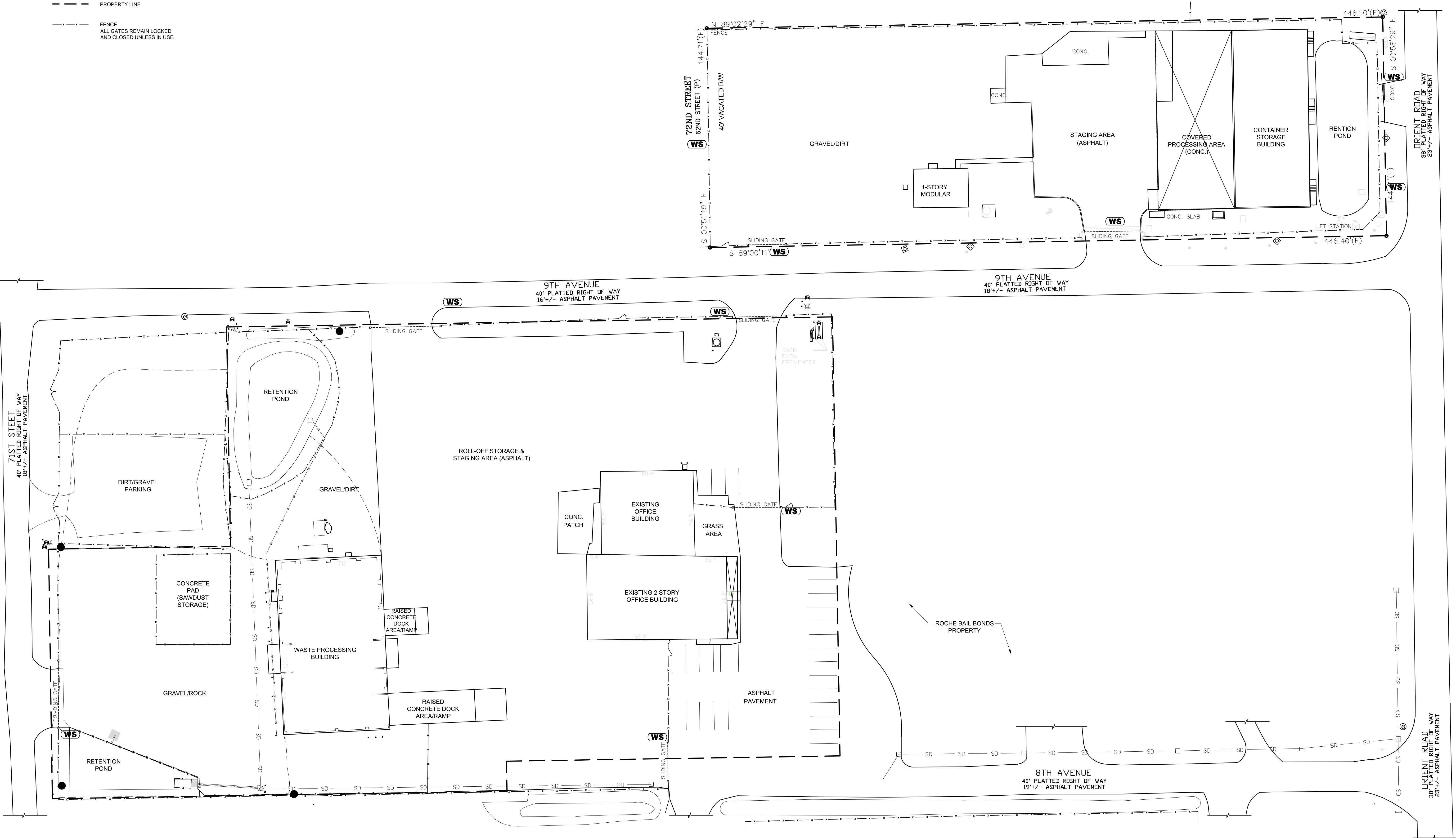
EQ FLORIDA, INC.

FIGURE 10 - SITE SECURITY

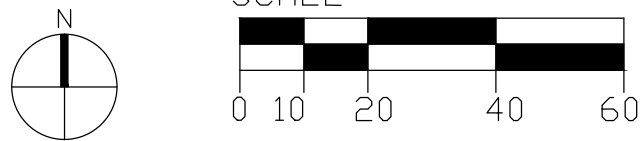
Project:	
EQ Florida, Inc. 7202 E. 8th Avenue Tampa, Florida	
Client:	
EQ Florida, Inc. 7202 E. 8th Avenue Tampa, Florida	
DATE	REVISION
Project No.	10706-3015106
Checked:	CBP
Drawn:	CL
Date:	01-12-2016
Sheet Title:	

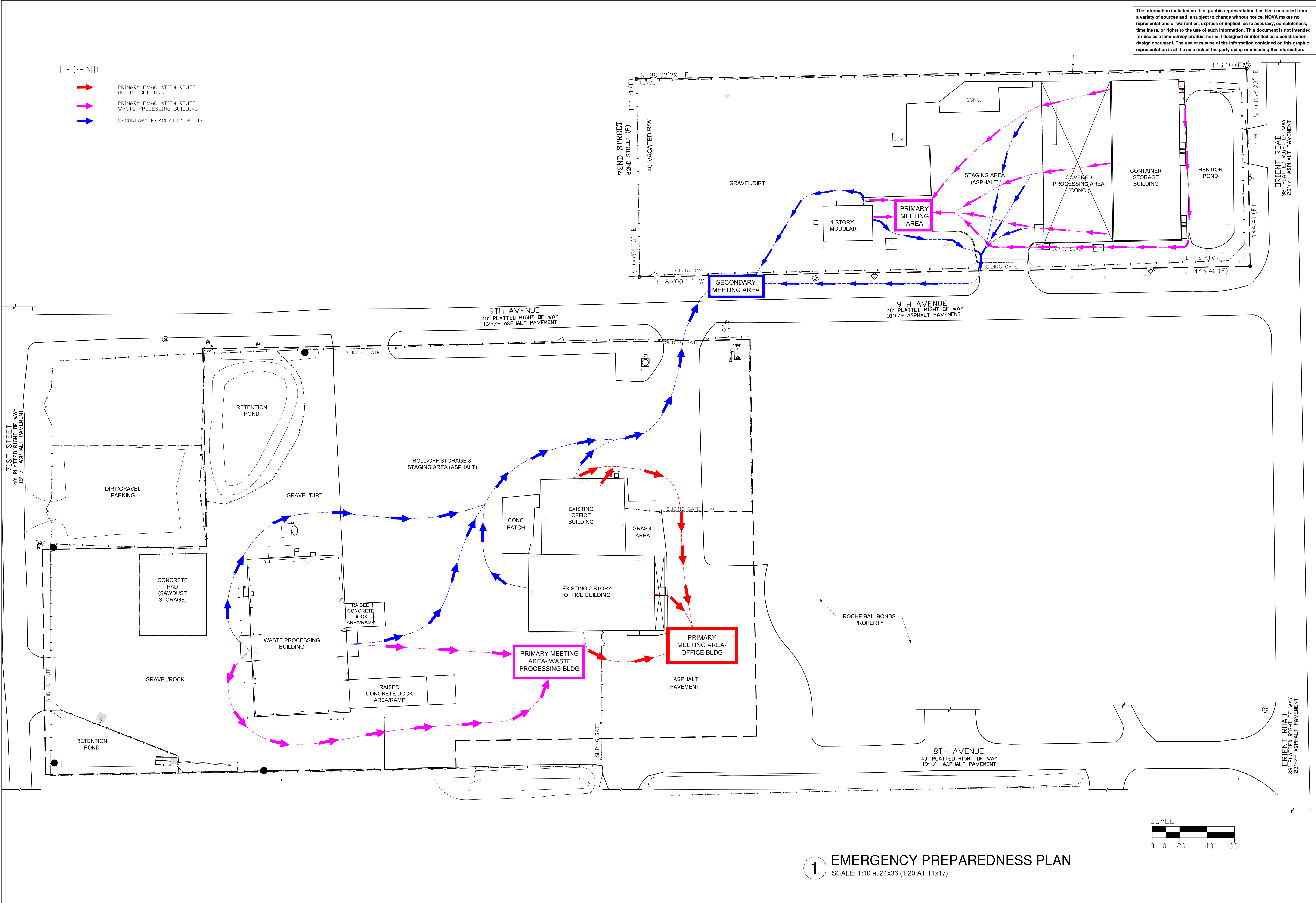
Site Security

Sheet No.



1 SITE SECURITY
SCALE: 1:30 at 24x36 (1:60 AT 11x17)





1226 Tech Blvd
Tampa, FL 33619
office: 813.623.3100
fax: 813.623.3545
www.usanova.com

EQ FLORIDA, INC.

FIGURE 11 - EMERGENCY PREPAREDNESS PLAN

Project:

EQ Florida, Inc.
7202 E. 8th Avenue
Tampa, Florida

Client:

EQ Florida, Inc.
7202 E. 8th Avenue
Tampa, Florida

DATE	REVISION

Project No. 10706-3015106

Checked: CBP

Drawn: CL

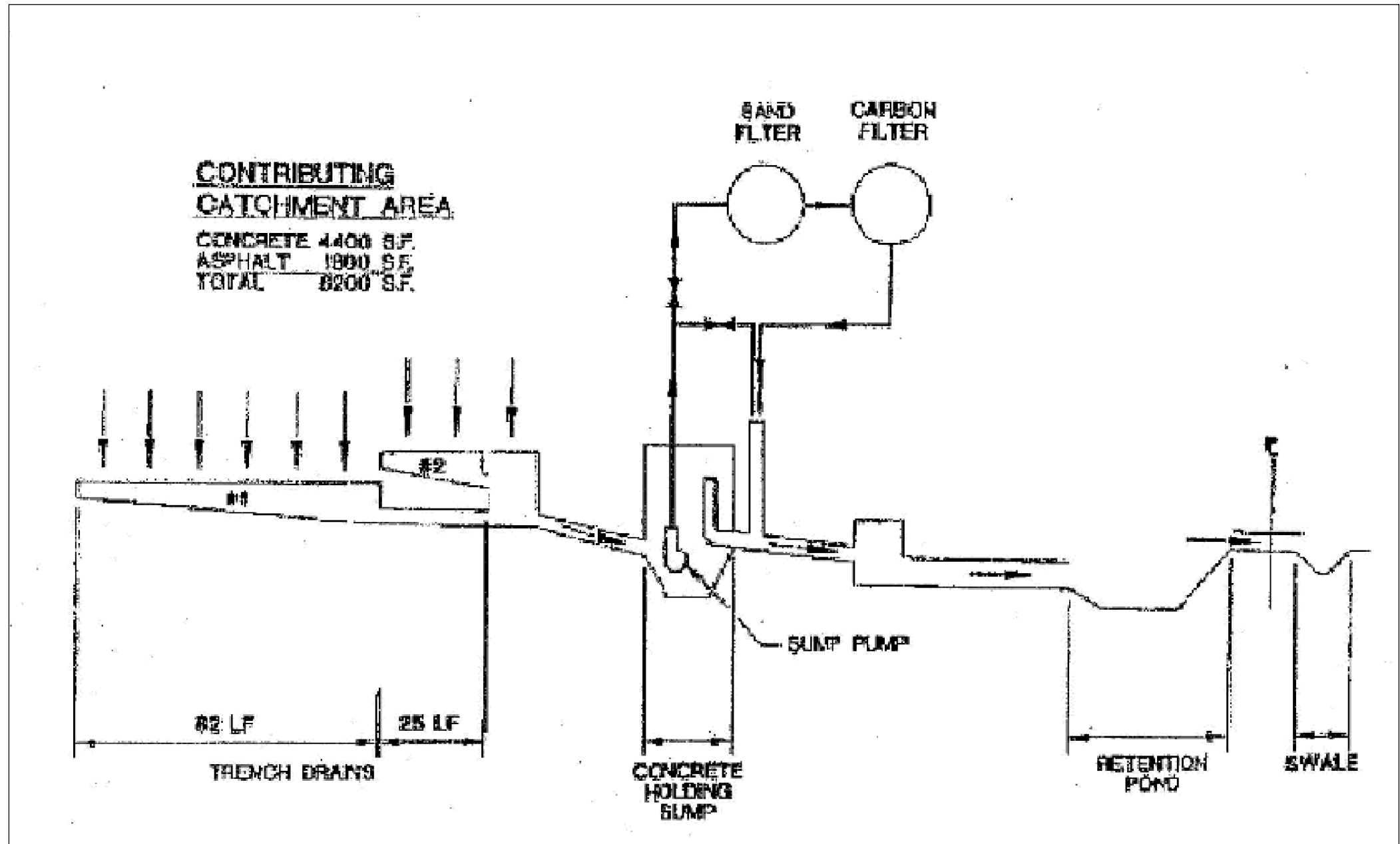
Date: 01-12-2016

Sheet Title:

Emergency Preparedness Plan

Sheet No.

11



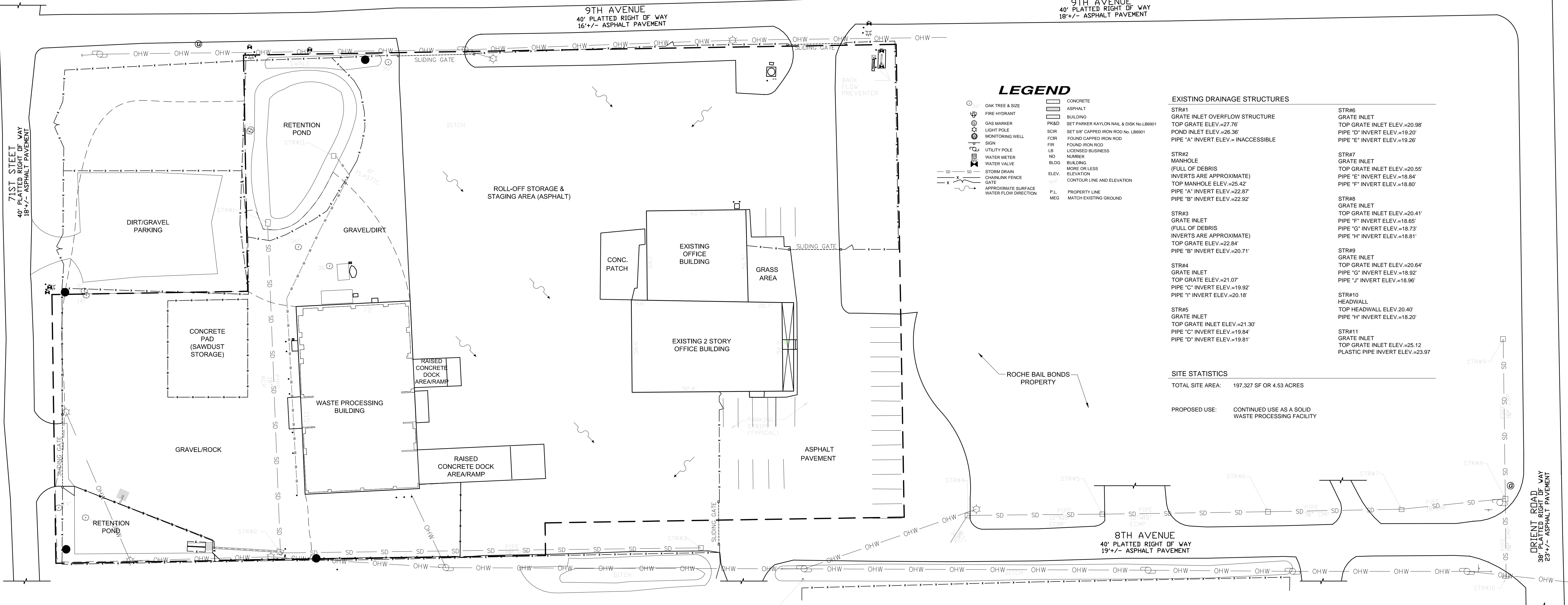
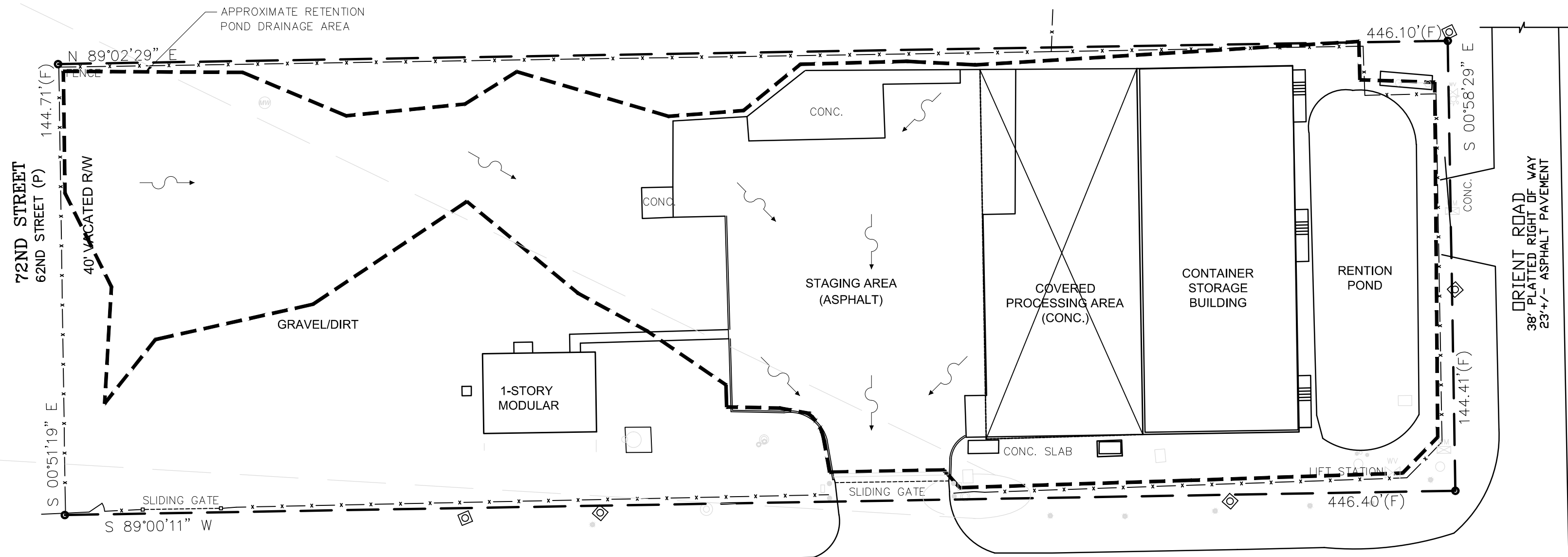
FLOW SCHEMATIC
NOT TO SCALE

The information included on this graphic representation has been compiled from a variety of sources and is subject to change without notice. NOVA makes no representations or warranties, express or implied, as to accuracy, completeness, timeliness, or rights to the use of such information. This document is not intended for use as a land survey product nor is it designed or intended as a construction design document. The use or misuse of the information contained on this graphic representation is at the sole risk of the party using or misusing the information.



1226 Tech Blvd
Tampa, FL 33619
office: 813.623.3100
fax: 813.623.3545

www.usanova.com



LEGEND

- OAK TREE & SIZE
- FIRE HYDRANT
- GAS MARKER
- LIGHT POLE
- MONITORING WELL
- SIGN
- UTILITY POLE
- WATER METER
- WATER VALVE
- STORM DRAIN
- CHAINLINK FENCE
- GATE
- APPROXIMATE SURFACE
- WATER FLOW DIRECTION

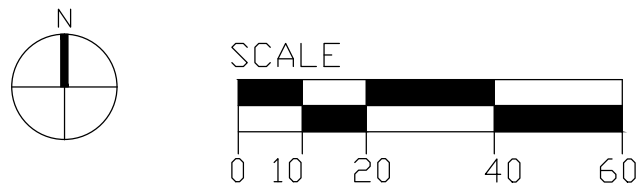
EXISTING DRAINAGE STRUCTURES

- STR#1
GRATE INLET OVERFLOW STRUCTURE
TOP GRATE ELEV.=27.76
POND INLET ELEV.=26.36
PIPE "A" INVERT ELEV.= INACCESSIBLE
- STR#2
MANHOLE
(FULL OF DEBRIS)
INVERTS ARE APPROXIMATE
TOP MANHOLE ELEV.=25.42
PIPE "A" INVERT ELEV.=22.87
PIPE "B" INVERT ELEV.=22.92
- STR#3
GRATE INLET
(FULL OF DEBRIS)
INVERTS ARE APPROXIMATE
TOP GRATE ELEV.=22.84
PIPE "B" INVERT ELEV.=20.71
- STR#4
GRATE INLET
TOP GRATE ELEV.=21.07
PIPE "C" INVERT ELEV.=19.92
PIPE "I" INVERT ELEV.=20.18
- STR#5
GRATE INLET
TOP GRATE INLET ELEV.=21.30
PIPE "C" INVERT ELEV.=19.84
PIPE "D" INVERT ELEV.=19.81
- STR#6
GRATE INLET
TOP GRATE INLET ELEV.=20.98
PIPE "D" INVERT ELEV.=19.20
PIPE "E" INVERT ELEV.=19.26
- STR#7
GRATE INLET
TOP GRATE INLET ELEV.=20.55
PIPE "E" INVERT ELEV.=18.84
PIPE "F" INVERT ELEV.=18.80
- STR#8
GRATE INLET
TOP GRATE INLET ELEV.=20.41
PIPE "F" INVERT ELEV.=18.65
PIPE "G" INVERT ELEV.=18.73
PIPE "H" INVERT ELEV.=18.81
- STR#9
GRATE INLET
TOP GRATE INLET ELEV.=20.64
PIPE "G" INVERT ELEV.=18.92
PIPE "J" INVERT ELEV.=18.96
- STR#10
HEADWALL
TOP HEADWALL ELEV.=20.40
PIPE "H" INVERT ELEV.=18.20
- STR#11
GRATE INLET
TOP GRATE INLET ELEV.=25.12
PLASTIC PIPE INVERT ELEV.=23.97

SITE STATISTICS

- TOTAL SITE AREA: 197,327 SF OR 4.53 ACRES
- PROPOSED USE: CONTINUED USE AS A SOLID WASTE PROCESSING FACILITY

1 DRAINAGE & STORMWATER CONTROLS
SCALE: 1:30 at 24x36 (1:60 AT 11x17)



EQ FLORIDA, INC.
FIGURE 13 - DRAINAGE & STORMWATER CONTROLS

Project:
EQ Florida, Inc.
7202 E. 8th Avenue
Tampa, Florida

Client:
EQ Florida, Inc.
7202 E. 8th Avenue
Tampa, Florida

DATE	REVISION

Project No. 10706-3015106
Checked: CBP
Drawn: CL
Date: 01-12-2016
Sheet Title:

**Drainage &
Stormwater
Controls**

Sheet No.

INDICATES AREA MAY ALSO BE UTILIZED FOR TEMPORARY PROCESSING AREA.

INDICATES AREA WHERE STORAGE WILL NOT OCCUR WHEN CONTAINERS ARE DOUBLE STACKED

FENCELINE SUMP

STORM DRAIN INLET

APPROXIMATE STORMWATER FLOW (SEE FIG. II FOR MORE DETAIL)

The information included on this graphic representation has been compiled from a variety of sources and is subject to change without notice. NOVA makes no representations or warranties, express or implied, as to accuracy, completeness, timeliness, or rights to the use of such information. This document is not intended for use as a land survey product nor is it designed or intended as a construction design document. The use or misuse of the information contained on this graphic representation is at the sole risk of the party using or misusing the information.

NOVA

ENGINEERING AND ENVIRONMENTAL

1226 Tech Blvd
Tampa, FL 33619
office: 813.623.3100
fax: 813.623.3545

www.usanova.com

EQ FLORIDA, INC.
FIGURE 14 - CONTAINER STORAGE BUILDING & COVERED PROCESSING AREA LAYOUT

Project:
EQ Florida, Inc.
7202 E. 8th Avenue
Tampa, Florida

Client:
EQ Florida, Inc.
7202 E. 8th Avenue
Tampa, Florida

DATE	REVISION

Project No. 10706-3015106
Checked: CBP
Drawn: CL
Date: 01-12-2016
Sheet Title:
Container Storage & Covered Processing Area Layout

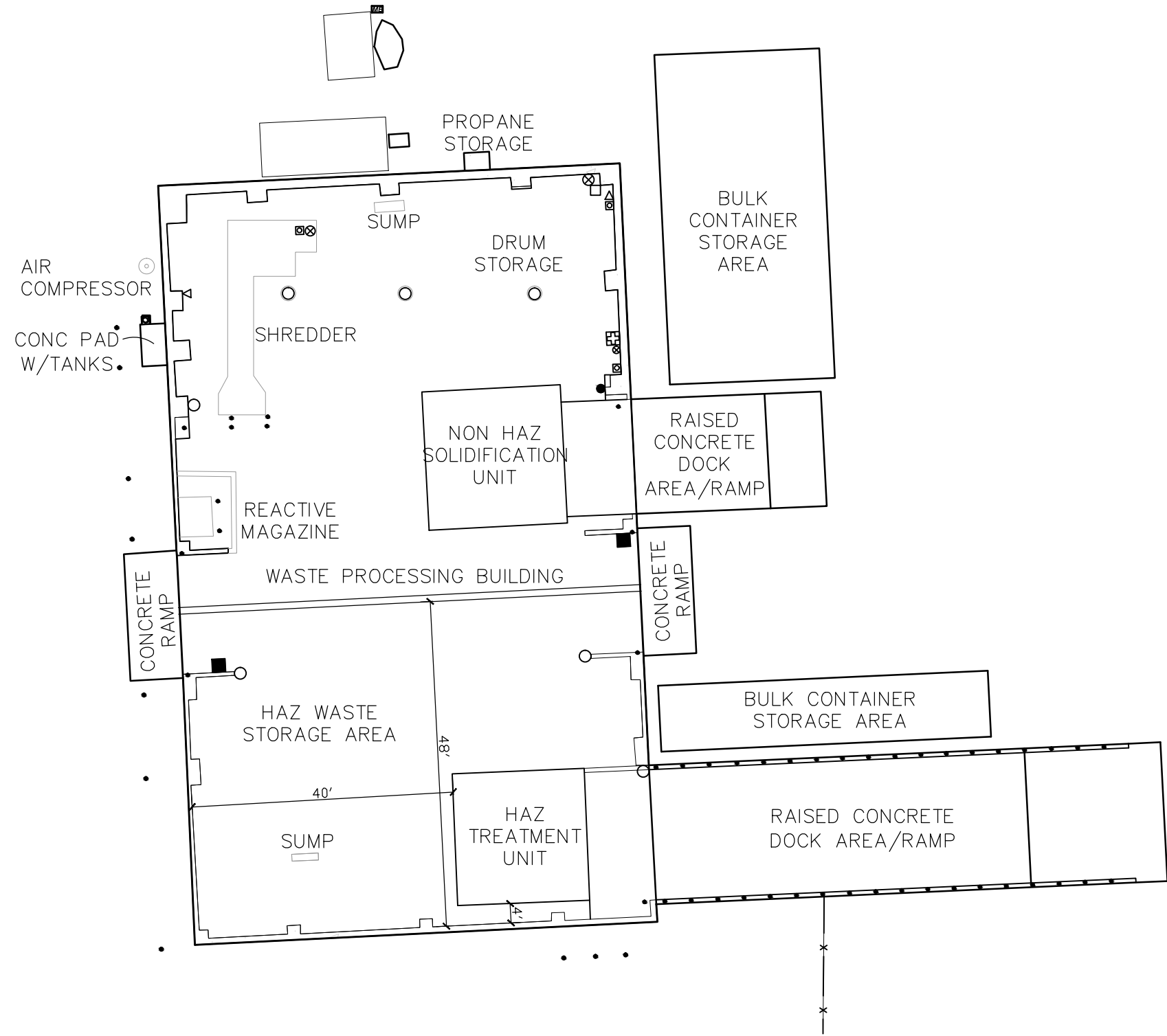
1 CONTAINER STORAGE BUILDING & COVERED PROCESSING AREA LAYOUT
SCALE: 1:10 at 24x36

N

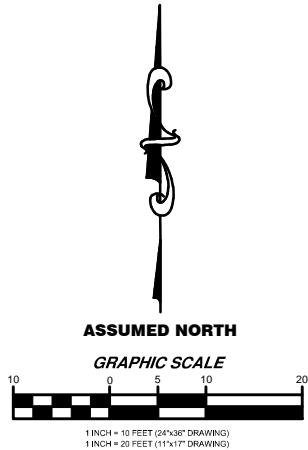
Sheet No. 14

LEGEND:

- FIRST AID STATION
- EMERGENCY STOP FOR SHREDDER
- EYE WASH STATION
- FIRE ALARM
- SPILL KIT
- AIR HORN
- FIRE SUPRESSION FOR SHREDDER
- FIRE EXTINGUISHER
- CEILING MOUNTED SMOKE DETECTOR TIED IN WITH ADT/TYCO



1 WASTE PROCESSING BUILDING LAYOUT
SCALE: 1:10 at 24x36 (1:20 AT 11x17)



The information included on this graphic representation has been compiled from a variety of sources and is subject to change without notice. NOVA makes no representations or warranties, express or implied, as to accuracy, completeness, timeliness, or rights to the use of such information. This document is not intended for use as a land survey product nor is it designed or intended as a construction design document. The use or misuse of the information contained on this graphic representation is at the sole risk of the party using or misusing the information.



1226 Tech Blvd
Tampa, FL 33619
office: 813.623.3100
fax: 813.623.3545

www.usanova.com

EQ FLORIDA, INC.
FIGURE 15 - WASTE PROCESSING BUILDING LAYOUT

Project:
EQ Florida, Inc.
7202 E. 8th Avenue
Tampa, Florida

Client:
EQ Florida, Inc.
7202 E. 8th Avenue
Tampa, Florida

DATE	REVISION

Project No. 10706-3015106
Checked: CBP
Drawn: CL
Date: 01-12-2016

Sheet Title:
Waste Processing
Building Layout

Sheet No. 15

LOCATION OF SOLID WASTE OPERATIONS

- AREA USED FOR WASTE RECEIVING AND STAGING.
- AREA USED FOR WASTE RECEIVING, UNLOADING, STORAGE, LOADING, SEGREGATION, TRANSFER AND PROCESSING
- AREA USED FOR BULK CONTAINER STORAGE
- R PRIMARY AREA WHERE RECYCLABLE MATERIAL IS STORED.
- 10 DAY TRANSFER + STAGING AREA

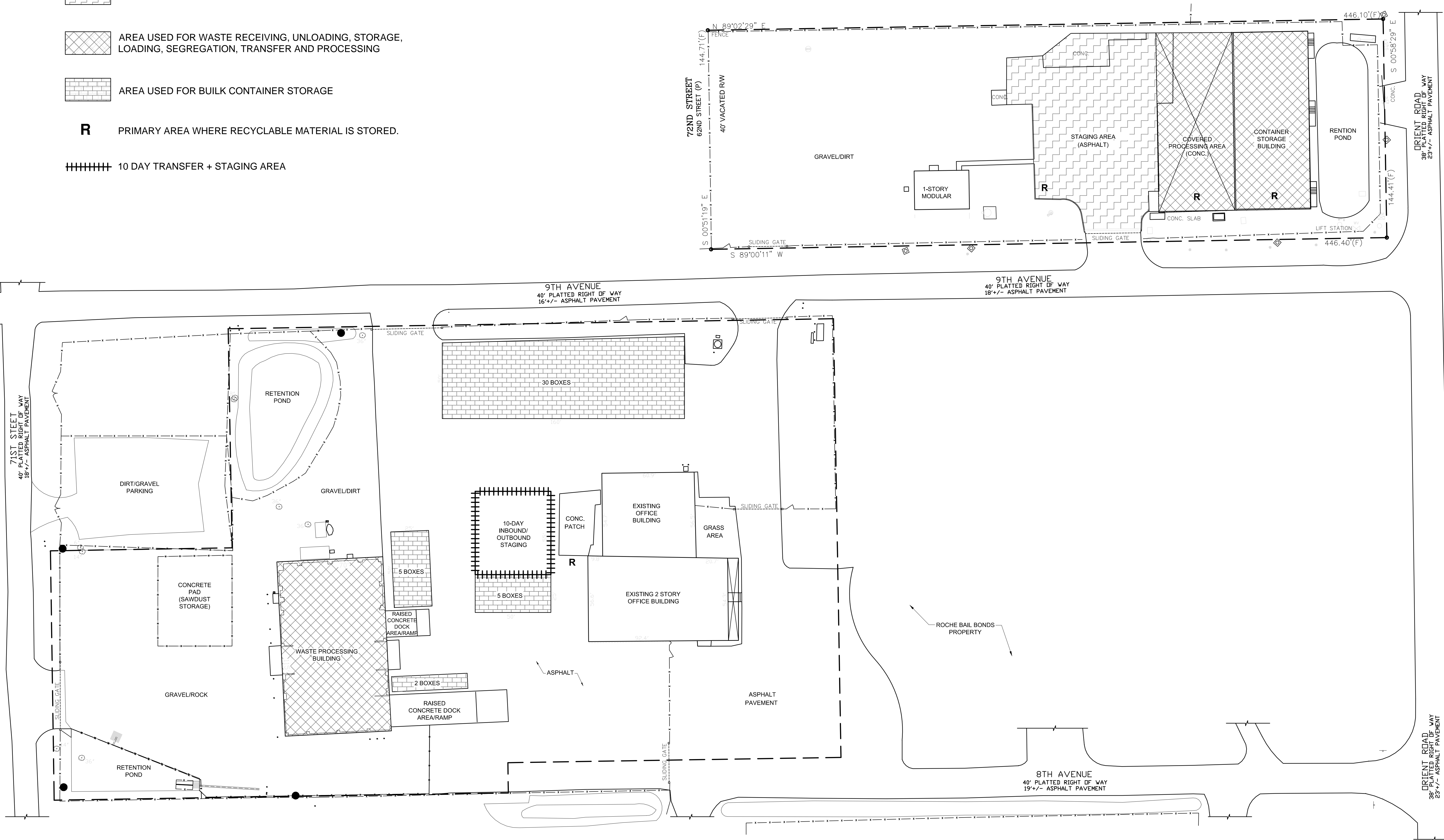
The information included on this graphic representation has been compiled from a variety of sources and is subject to change without notice. NOVA makes no representations or warranties, express or implied, as to accuracy, completeness, timeliness, or rights to the use of such information. This document is not intended for use as a land survey product nor is it designed or intended as a construction design document. The use or misuse of the information contained on this graphic representation is at the sole risk of the party using or misusing the information.



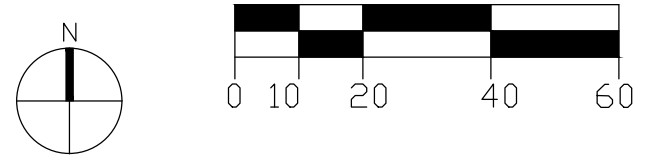
1226 Tech Blvd
Tampa, FL 33619
office: 813.623.3100
fax: 813.623.3545

www.usanova.com

EQ FLORIDA, INC.
FIGURE 16 - WASTE MANAGEMENT AREA LOCATIONS



1 WASTE MANAGEMENT AREA LOCATIONS
SCALE: 1:30 at 24x36 (1:60 AT 11x17)



Project: EQ Florida, Inc. 7202 E. 8th Avenue Tampa, Florida	
Client: EQ Florida, Inc. 7202 E. 8th Avenue Tampa, Florida	
DATE	REVISION
Project No.	10706-3015106
Checked:	CBP
Drawn:	CL
Date:	02-02-2016
Sheet Title:	

Waste
Management
Area Locations

LEGEND

- 1

CONTAINER STORAGE AREA/5 SUMPS
(CONTAINER STORAGE BUILDING)
- 2

LOADING/UNLOADING DOCKS (COVERED PROCESSING AREA)
- 3

STORMWATER RETENTION POND
- 4

FILTER PRESS (CERTIFIED CLOSED ON 10/31/2013)
- 5

MUNICIPAL WASTE DUMPSTER
- 6

STORMWATER PRE-TREATMENT UNIT
- 7

WASTE PROCESSING BUILDING
(HAZARDOUS AND NON-HAZARDOUS WASTE)
- 8

UNIVERSAL WASTE BATTERY STORAGE AREA
- 9

PAINT CAN CRUSHING AREA
- 10

ROLL-OFF STORAGE AREA
(SOLID WASTE OPERATIONS AREA)

11

10-DAY TRANSFER FACILITY/STAGING AREA

12

USED OIL FACILITY
REMOVED AND REPLACED BY SWMU-19 ONCE CONSTRUCTED)

13

SATELLITE ACCUMULATION AREA

14

PARTS WASHER

15

ADDITIONAL RETENTION POND

16

UNIVERSAL WASTE LAMP STORAGE AREA

17

AEROSOL CAN CRUSHING AREA
(REMOVED AND SCRAPPED CIRCA 2010)

18

DRUM CRUSHING AREA

19

OIL-WATER SEPERATOR TANK/SYSTEM (PROPOSED)

20

BULK CONTAINER STORAGE AREA

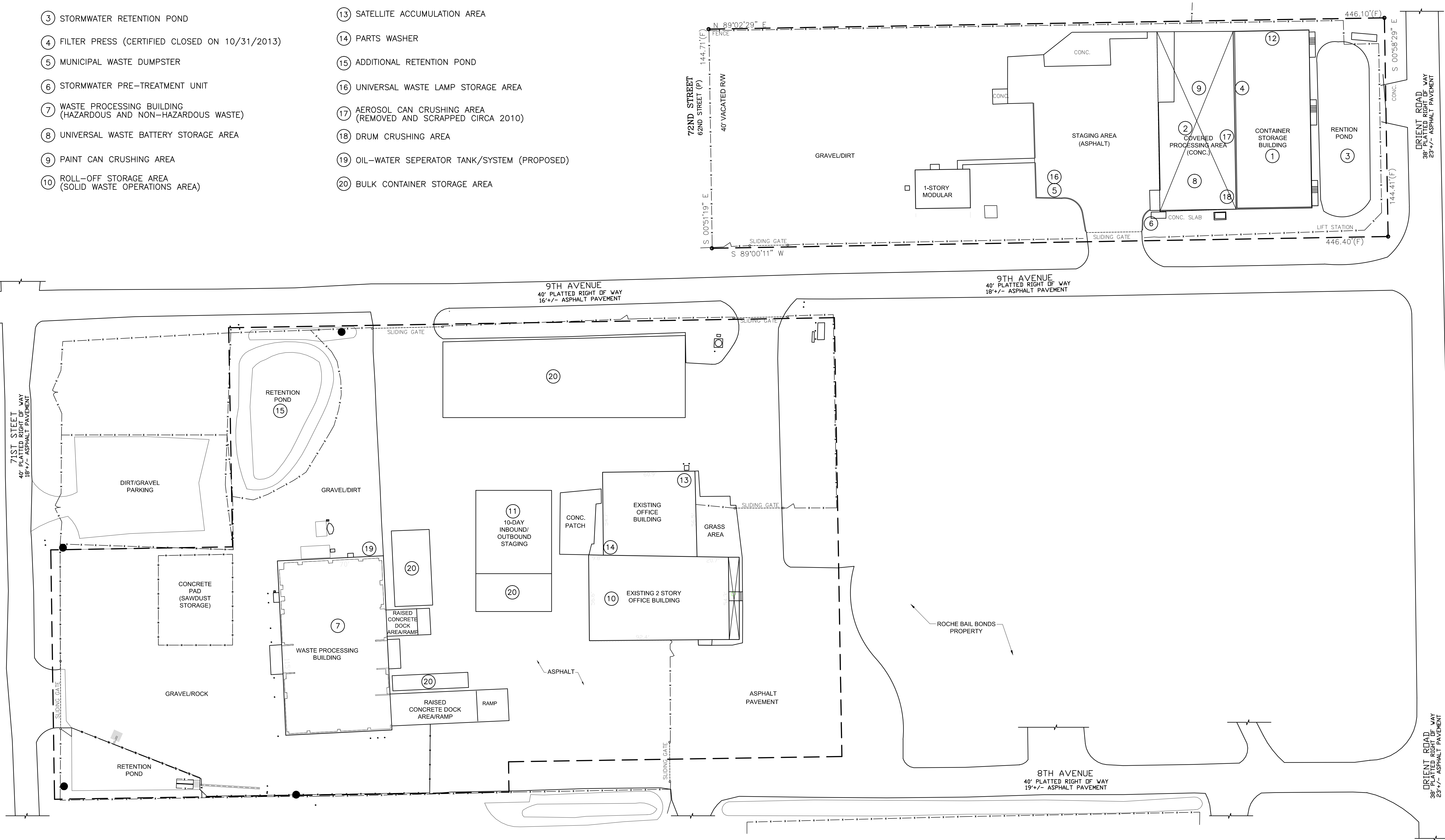
The information included on this graphic representation has been compiled from a variety of sources and is subject to change without notice. NOVA makes no representations or warranties, express or implied, as to accuracy, completeness, timeliness, or rights to the use of such information. This document is not intended for use as a land survey product nor is it designed or intended as a construction design document. The use or misuse of the information contained on this graphic representation is at the sole risk of the party using or misusing the information.



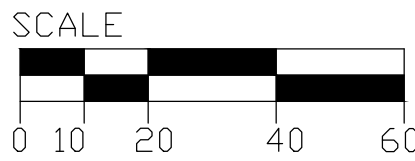
1226 Tech Blvd
Tampa, FL 33619
office: 813.623.3100
fax: 813.623.3545

www.usanova.com

EQ FLORIDA, INC.
FIGURE 17 - SOLID WASTE MANAGEMENT UNITS



1 SOLID WASTE MANAGEMENT UNITS
SCALE: 1:10 at 24x36 (1:20 AT 11x17)



Project:	
EQ Florida, Inc. 7202 E. 8th Avenue Tampa, Florida	
Client:	
EQ Florida, Inc. 7202 E. 8th Avenue Tampa, Florida	
DATE	REVISION
Project No.	10706-3015106
Checked:	CBP
Drawn:	CL
Date:	02-02-2016
Sheet Title:	

Solid Waste
Management
Units