

STREET ADDRESS

2250 WASHBURN AVENUE
NAPLES, FL 34117

STRAP NUMBER

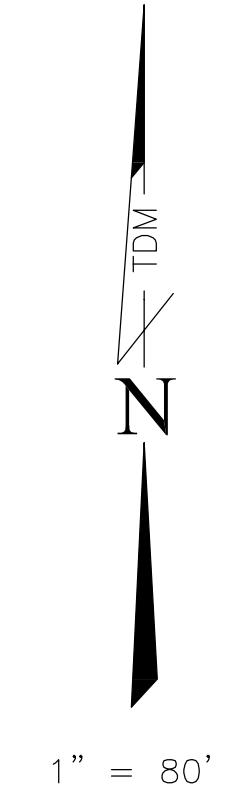
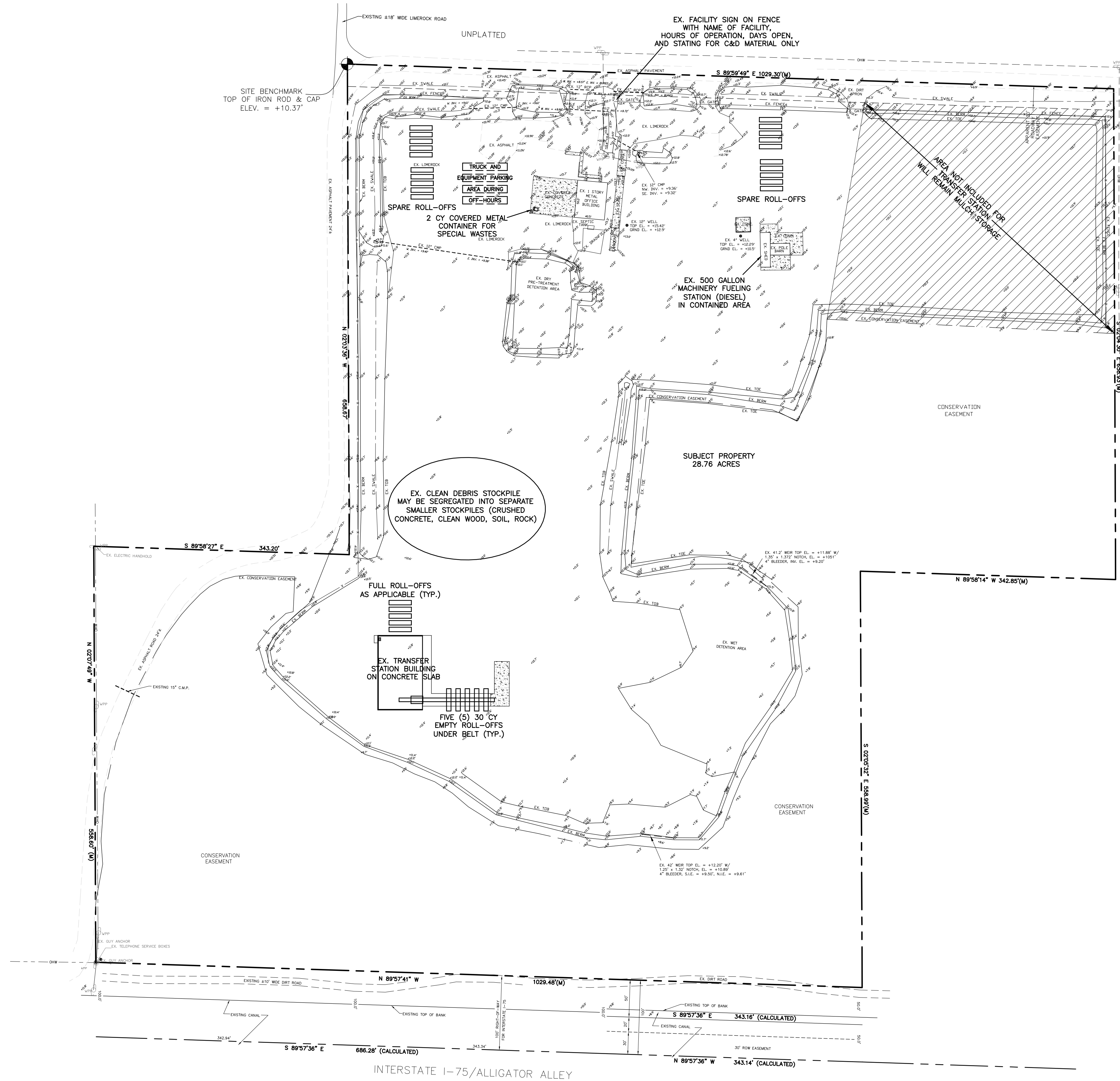
492731 095,004C31

SITE AREAS

LAND AREA ALLOCATED FOR TRANSFER STATION OPERATION* = 12.97 ACRES
BUILDING (ROOF) AREA USED FOR TRANSFER STATION OPERATION** = 0.19 ACRES
TOTAL AREA ALLOCATED FOR TRANSFER STATION OPERATION = 13.16 ACRES

* - PLEASE NOTE THAT THE PARKING LOT AND THE ENTRANCES/EXITS ARE USED BY BOTH THE TRANSFER STATION OPERATION AND THE MULCH STORAGE AND PROCESSING OPERATION. IN ADDITION, THE 12.97 ACRES CANNOT BE EXCLUSIVELY ALLOCATED TO THE TRANSFER STATION OPERATION BECAUSE OF THE NATURE OF THE DUAL USES ON THE SITE.

** - PLEASE NOTE THAT THE 0.05 ACRE OFFICE IS USED BY BOTH THE TRANSFER STATION OPERATION AND THE MULCH STORAGE AND PROCESSING OPERATION.



LEGEND

- E.O.P. EDGE OF PAVEMENT
- CONCRETE CONCRETE
- CBS CONCRETE BLOCK STRUCTURE
- SF SQUARE FEET
- P.U.E. PUBLIC UTILITY EASEMENT
- D.E. DRAINAGE EASEMENT
- ROW (R/W) RIGHT OF WAY
- R.C.P. REINFORCED CONCRETE PIPE
- C.P.P. CORRUGATED PLASTIC PIPE
- T.O.B. TOP OF BANK
- T.O.S. TOE OF SLOPE
- C.L.F. CHAIN-LINK FENCE
- EX. EXISTING
- CONC. CONCRETE
- CL CENTERLINE
- EL ELEVATION
- I.E. INVERT ELEVATION
- EXISTING SPOT ELEVATION
- NOT INCLUDED IN TRANSFER STATION
- CY CUBIC YARD
- F.D.E.P. FLORIDA DEPARTMENT OF ENVIRONMENTAL PROTECTION

DATE	DESIGNED BY:	REVISIONS
03/09/2017	TDM	
	DRAWN BY:	
	CHECKED BY:	
	APPROVED BY:	

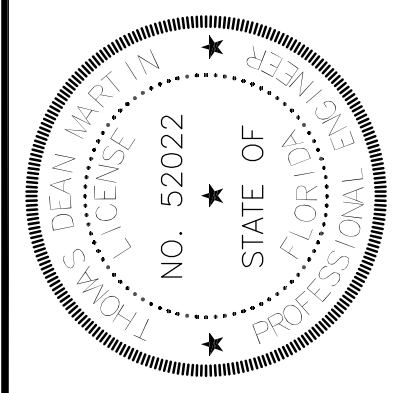
**YAHL MULCHING AND RECYCLING, INC.
SITE PLAN**

Civil Engineering and Planning

 dean@tdmconsulting.com
 www.tdmcivilengineering.com

TDM CONSULTING, INC.
 CIVIL ENGINEERING
 43 Barkley Circle, Suite 200
 Fort Myers, FL 33907
 Phone: (239) 433-4231
 Fax: (239) 433-9632
 Cert. of Authorization # 29086

NOT VALID WITHOUT EMBOSSED SEAL, SIGNATURE AND DATE.



DATE: _____
 Dean Martin, P.E.
 Florida #52022