

(407) 859-4441 • FAX (407) 855-2812

A circular postmark from the District of Columbia. The text "D.C. CENTRAL DISTRICT" is arranged in a circle around the date "DEC 10 1908". The date is printed in a bold, sans-serif font. The postmark is slightly faded and has a textured appearance.

Protecting Our Environment For Over A Quarter Of A Century

BARRY D. PORTNOY P.E., INC.

CONSULTING ENGINEER



ENGINEERING REPORT

FOR
CHEMICAL CONSERVATION CORPORATION
ORLANDO, FLORIDA
DECEMBER 1998

PURPOSE OF REPORT: 1) to determine if the Chemical Conservation Corporation Orlando site is within a 1000 yard radius of any residence.

2) to determine if the Chemical Conservation Corporation Orlando site is within a 1500 yard radius of any hospital, prison, school, nursing home facility, day care facility, stadium, place of assembled worship, or any similar sites.

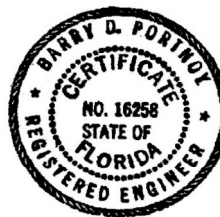
PROCEDURE: Locate , if any, residence, hospital, prison, school, nursing home facility, day care facility, stadium, place of assembled worship any similar sites, by riding all of the streets approximately within one mile radius of the Chemical Conservation Corporation Orlando site. After locating any possible sites on the road they were also located on a 300 scale aerial map prepared by Orange County Florida Planning Department, to determine if any residence were within 1000 yards or hospital, prison, school, nursing home facility, day care facility, stadium, place of assembled worship, or any similar sites were within 1500 yards. The 1000 yards and 1500 yards were measured from the corners of the properties, as show on the attached maps.

CONCLUSION:

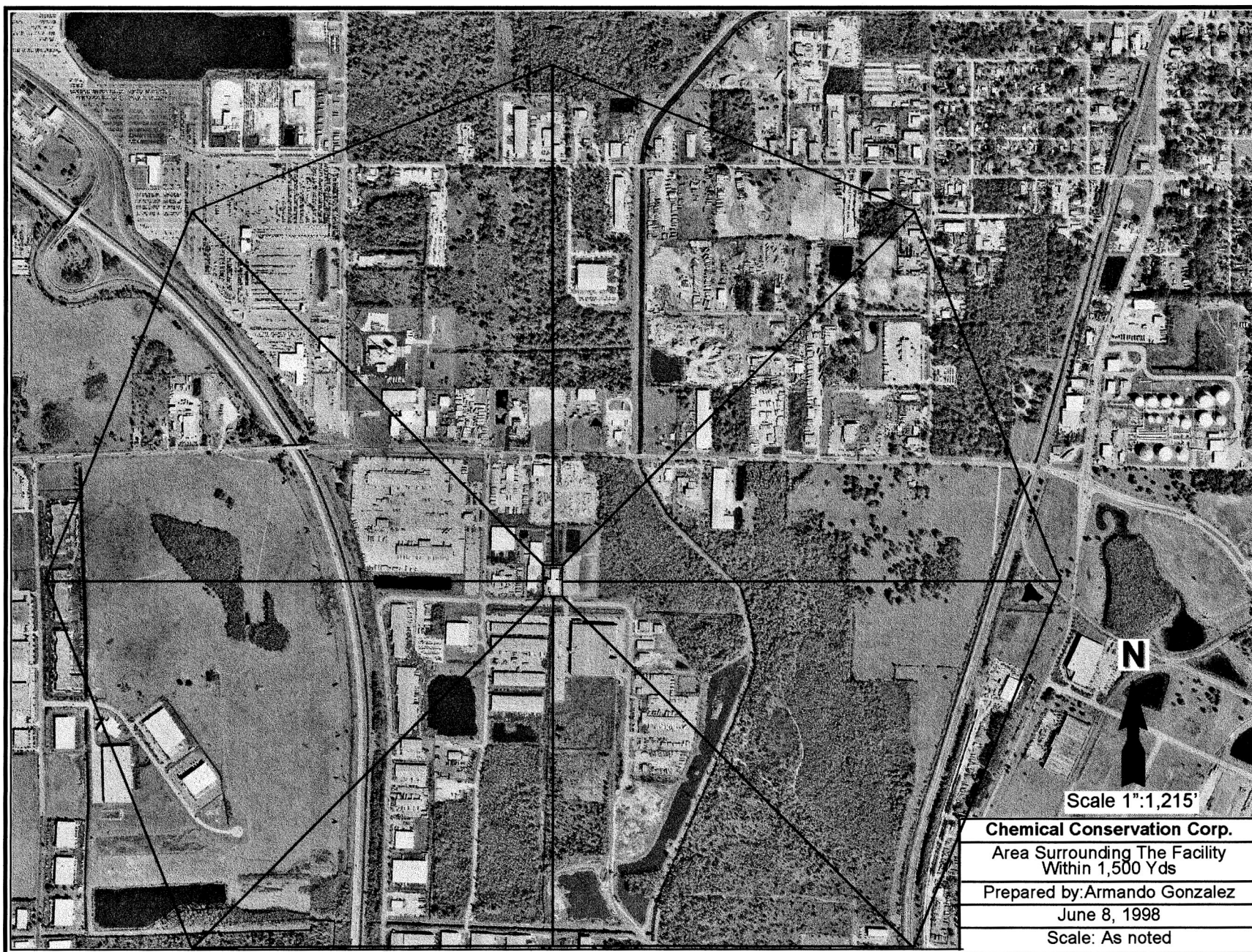
In my professional opinion there are no current residence within 1000 yards of Chemical Conservation Corporation Orlando site.

In my professional opinion there are no current hospital, prison, school, nursing home facility, day care facility, stadium, place of assembled worship, or any other similar site where individuals are routinely confined or assembled in such a manner that reasonable access to immediate evacuation is likely to be unavailable.

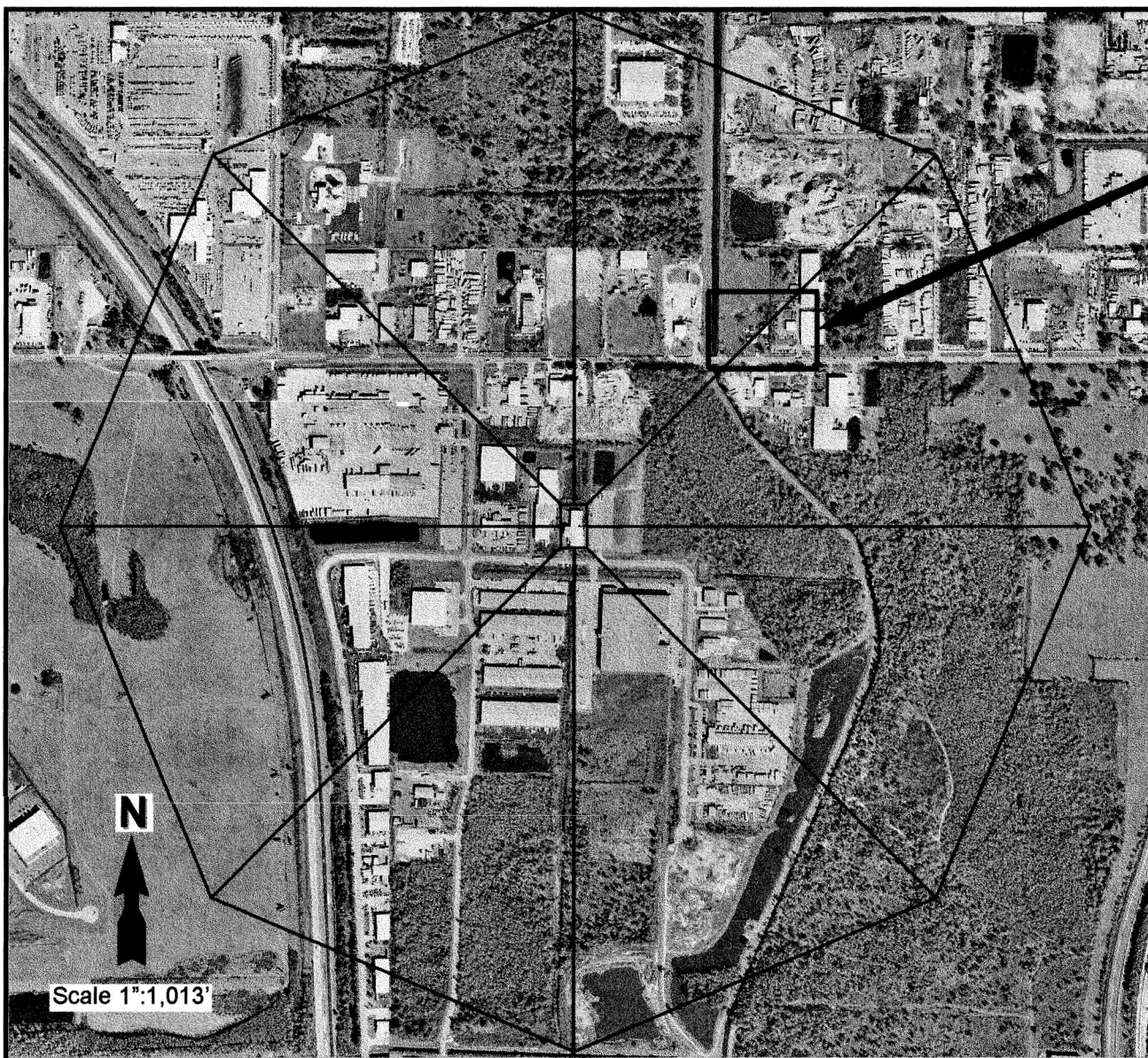
Barry D. Portnoy
Barry D. Portnoy, P.E.
12/17/98



OFFICE: 5767 MAJOR BOULEVARD, ORLANDO, FL. 32819
MAIL : P.O. BOX 941416 MAITLAND, FL. 32751
PHONE : (407) 345-8397 FAX: (407) 396-4783



3 3/4" / 4500'



3" / 3000'

Every line that originates at the rectangle that surrounds the facility's active hazardous waste management area is 1,000 yds (3,000') long



485 W. Taft-Vineland Rd.

Chemical Conservation Corp.

Area Surrounding The Facility
Within 1,000 Yds

Prepared by: Armando Gonzalez

May 29, 1998

Scale: As noted