

Chemical Conservation Corporation

10100 ROCKET BOULEVARD • ORLANDO, FLORIDA 32824

(407) 859-4441 • FAX (407) 855-2812



August 1, 1995

FLD 980-559-728

Mr. Robert Snyder
Section Manager
Hazardous Waste Program
FLORIDA DEPARTMENT OF ENVIRONMENTAL PROTECTION
3319 Maguire Boulevard
Suite 232
Orlando, Florida 32803-3767

Dear Mr. Snyder:

Chemical Conservation Corporation (CCC) wants to keep you informed of facility improvements that have been completed recently in accordance with discussions held with you in past meetings.

The intent of these improvements is to prepare the facility for a faster implementation of the permit for which CCC will be applying in the near future. They also ratify CCC's intention of moving ahead with the operations and processes proposed in the permit application that is being prepared.

To better illustrate the improvements the facility has recently experienced, six photographs have been included which shows views of the new structure from several angles. The structure consists of the secondary containment system and two tanks that will be utilized to store hazardous waste fuels when the new permit is issued, and a steel frame to support the roof that covers the loading dock and the tank storage system. The tanks were put inside the containment walls because they were available, and because it was easier to put them in before the steel frame was erected and the roof installed rather than after the containment area gets covered with the roof. The tank storage system will conform to specifications in the application and to requirements in the regulations for hazardous waste facilities.

If you have any questions, please call me at (407) 859-4441.

Sincerely,

CHEMICAL CONSERVATION CORPORATION


Armando Gonzalez
Compliance Officer

AG/jb

CC: William Labadie



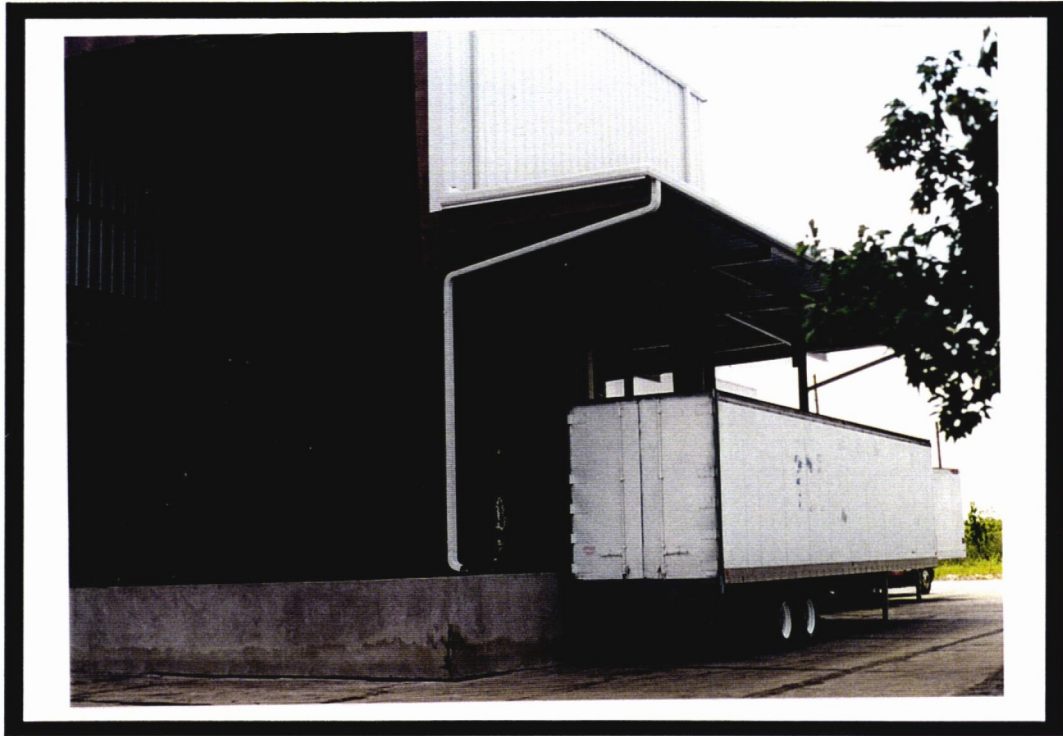
New building housing loading dock and waste fuel tank system; south view, through entrance.

Photo taken 7-24-95



New building housing loading dock and waste fuel tank system; southwest view.

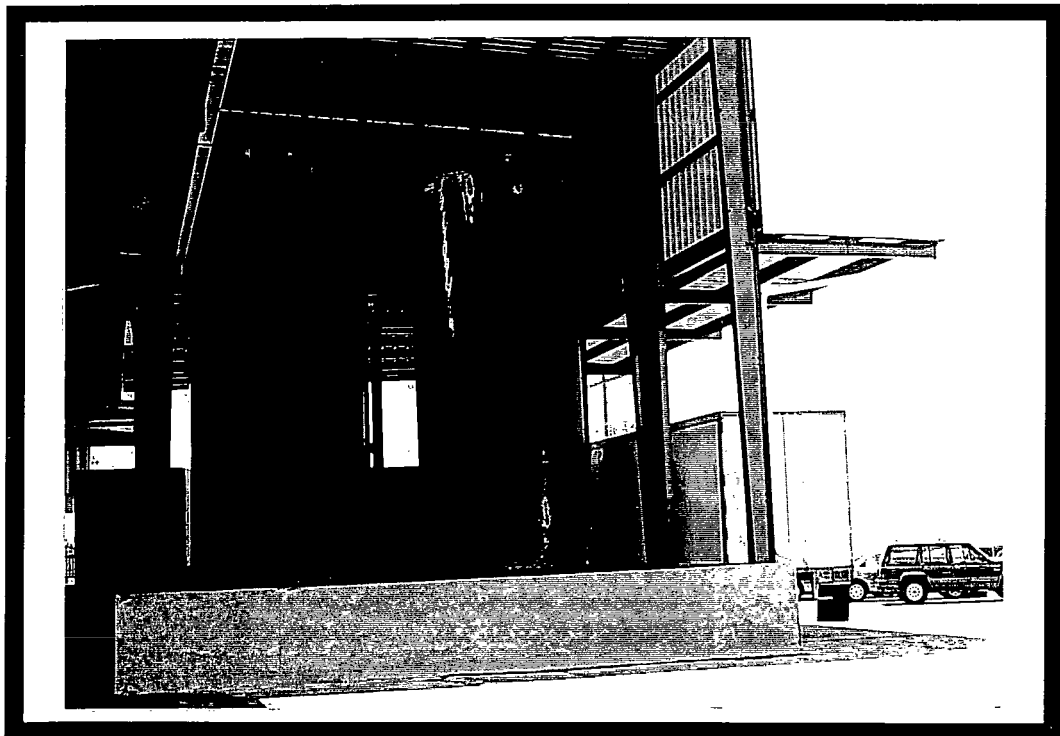
Photo taken 7-24-95



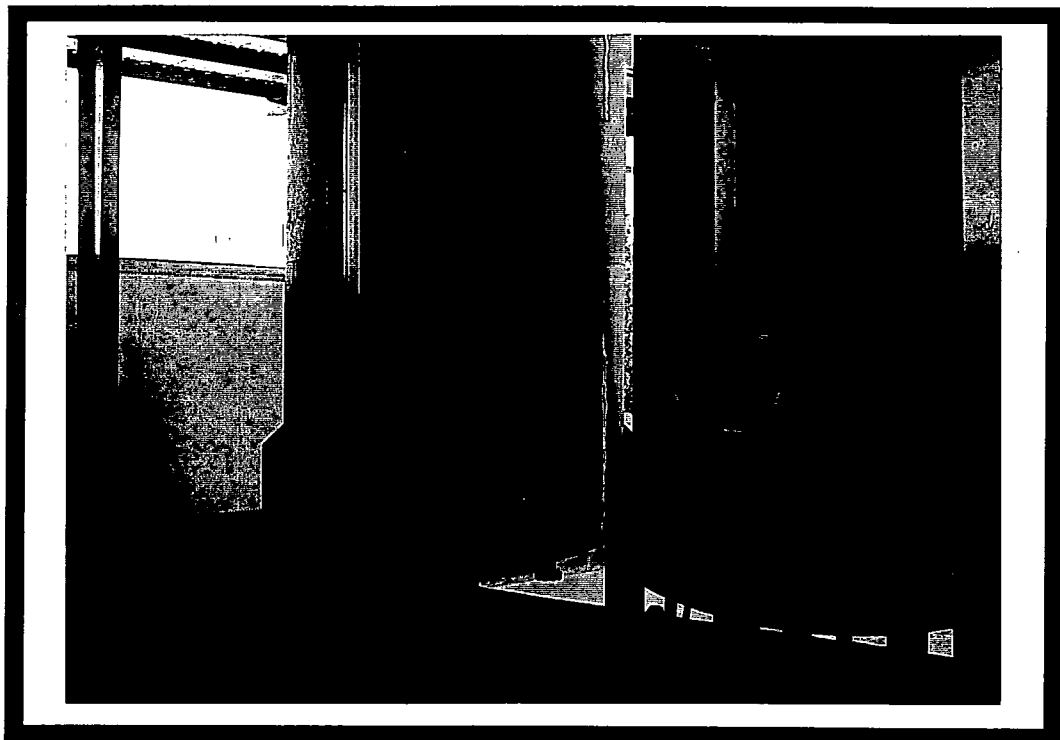
New building housing loading dock and waste fuel tank system; northwest view.
Photo taken 7-24-95



New building housing loading dock and waste fuel tank system; north view.
Photo taken 7-24-95



New building housing loading dock and waste fuel tank system; northeast view.
Photo taken 7-24-95



Two waste fuel tanks located on the south side of secondary containment;
southeast view, from loading dock.
Photo taken 7-24-95