

MIAMI DADE COUNTY, FLORIDA
DEPARTMENT OF ENVIRONMENTAL RESOURCES MANAGEMENT
PRETREATMENT FACILITY INSPECTION REPORT

SOURCE NAME: N/A ADDRESS: Opa Locka PS#14
INSPECTOR: M Graham DATE: 11-2-18 TIME: 5:30-6:30pm
REASON: Complaint Request: XX Routine: Sample: Other:
TYPE: Prescheduled Unscheduled: XX Demand:

TOTAL TIME EXPENDED: 1 Hr

The DERM contractor World Petroleum, Inc (WP) was called to Opa Locka PS 14 at approx 13200 NW 38 Ct to remove oil accumulated in the lift station at the request of the City of Opa Locka as reported by Myra Flagler and they arrived on site at 3:15PM. When I arrived on site WP had completed pressure cleaning a valve pit adjacent to the wet well which had been oiled by an overflow from the high oil level in the wet well and they were skimming oil from the top of water in the wet well itself. They had tried to pressure wash the oil off the walls of the wet well but the accumulated oil was too thick and the wet well was too deep at 15-20 ft to reach from the surface. WP staff said that the oil in question was so thick that it had to be identified as Bunker oil. There was no evidence of oil having overflowed the structure and the concrete surrounding the wet well was relatively clean. A large rainwater puddle was seen at the edge of the road just south of the lift station and no rainbow sheen was seen on the standing water. By 6:00pm the 3,000 gal WP vac truck was nearly full of oily water and discussions with DERM, Opa Locka, and WP resulted in a decision to return to the lift station on the following Monday morning with confined-space entry supplies such that a worker would be able to enter the lift station to degrease and pressure wash the walls of the structure at depth.

PHOTOS:



Photo #1 Lift station sign and WP vac truck at right.

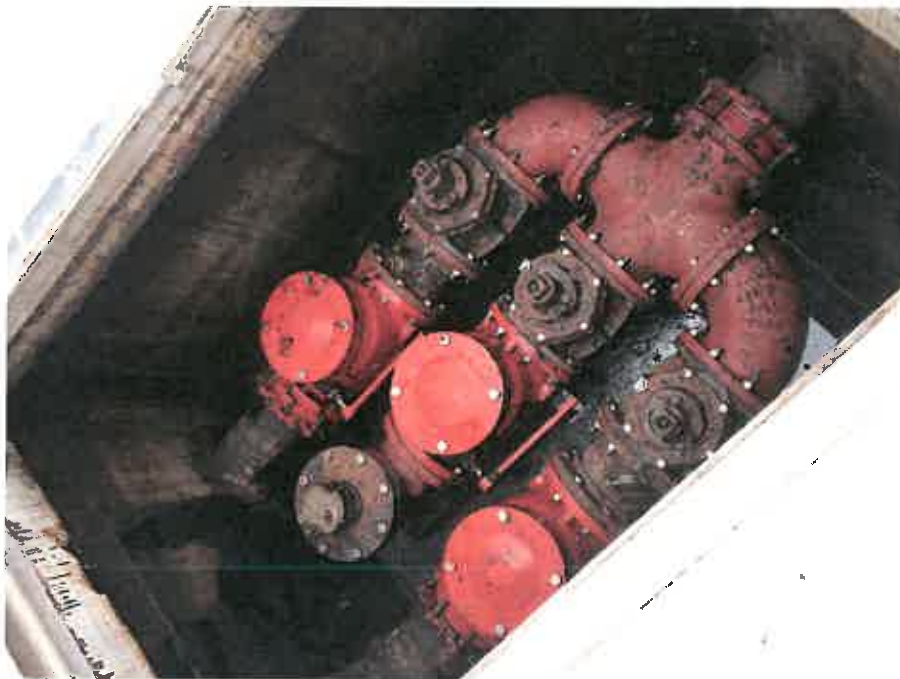


Photo #2 Valve pit adjacent to wet well after oil cleaned off by WP. Pit connected to wet well by an open overflow pipe.

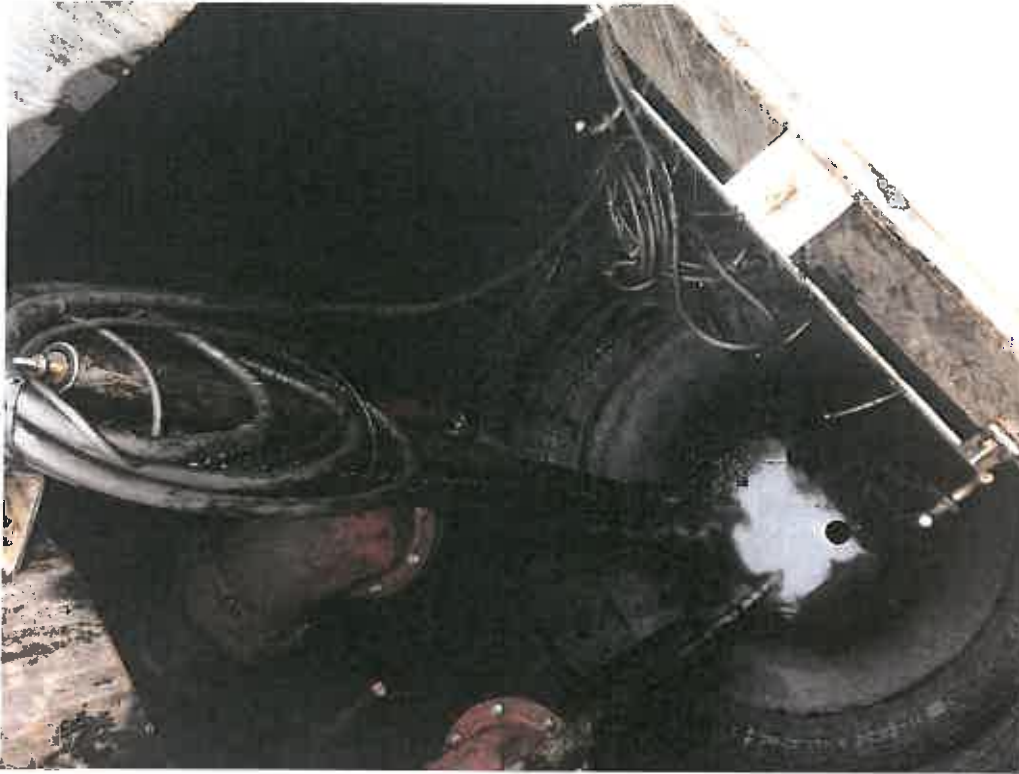


Photo #3 Wet well following pumping and attempt to pressure wash walls from the surface. Note heavy oil on cables and pipes.



Photo #4 WP staff cleaning equipment just prior to leaving the site for the day. Valve pit shown in #2 is at right foreground with covers closed.