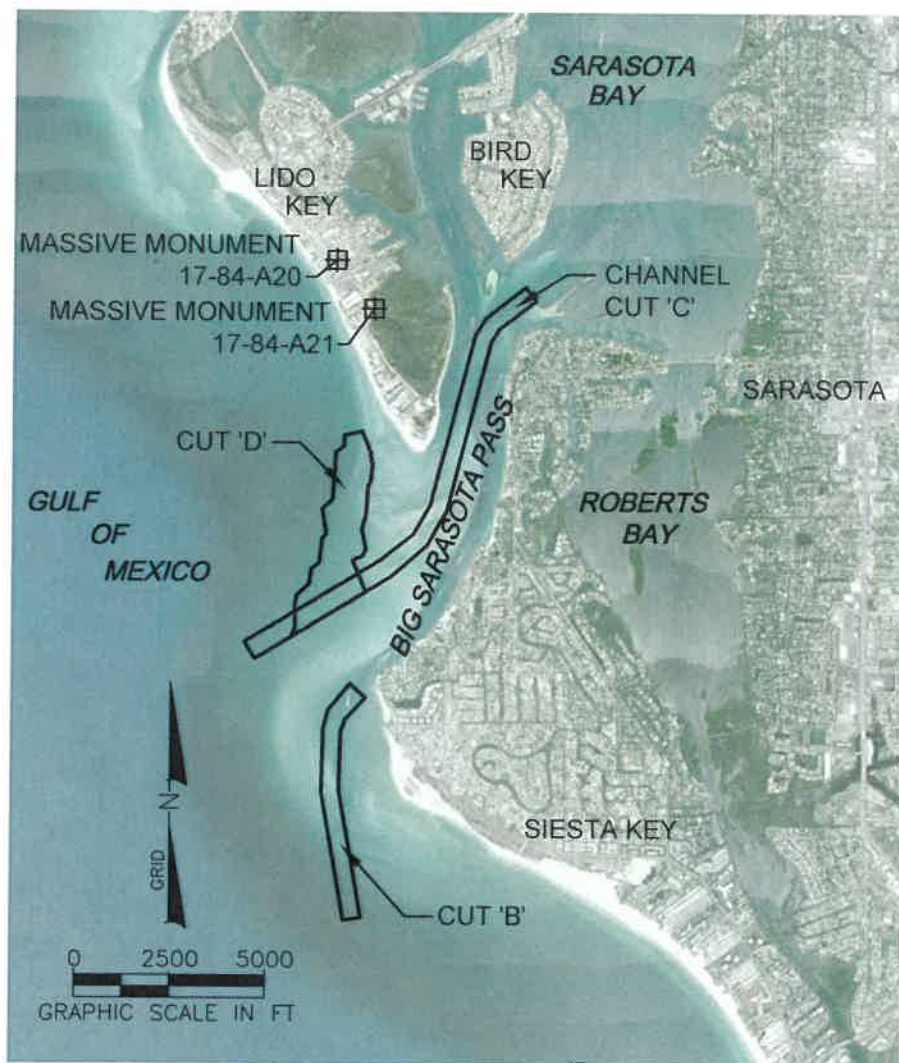
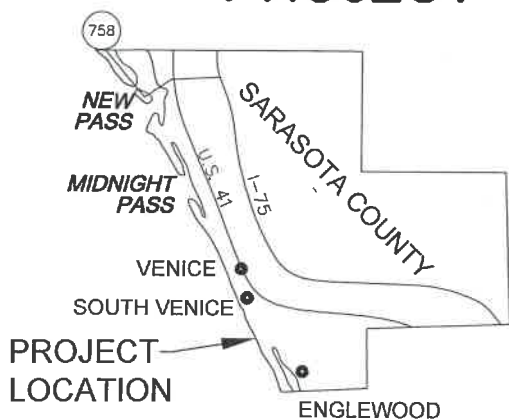


# PROJECT LOCATION MAP



LIDO KEY FLORIDA  
CUT 'B', 'C', AND 'D' SKETCH AND DESCRIPTION  
LOCATION MAP

CB&I COASTAL PLANNING & ENGINEERING, INC.

P.O. BOX 301-0102  
FAX (881) 391-9116  
C.O.A. FL. 60229

2481 N.W. BOCA RATON BOULEVARD  
BOCA RATON, FLORIDA 33431  
www.cbci.com

DATE:  
07/23/15  
BY:

HN  
COMM NO.:  
150252  
SHEET:  
1 OF 8

## SHEET INDEX

NO.	TITLE
1	LOCATION MAP
2	CUT 'B' PLAN VIEW
3	CUT 'B' LEGAL DESCRIPTION
4	CHANNEL CUT 'C' PLAN VIEW
5	CHANNEL CUT 'C' LEGAL DESCRIPTION
6	CUT 'D' PLAN VIEW
7	CUT 'D' LEGAL DESCRIPTION
8	NOTES, LEGEND AND CERTIFICATION

REVISIONS		
DATE	BY	DESCRIPTION

DEPARTMENT OF  
ENVIRONMENTAL  
PROTECTION MASSIVE  
MONUMENT 17-84-A20  
N 1082253.09  
E 469859.32

BASIS OF BEARING

S 37°32'14" E  
1604.10'

CUT 'D'

CHANNEL  
CUT 'C'

BIG SARASOTA PASS  
TIE LINE

POINT OF  
COMMENCEMENT

DEPARTMENT OF  
ENVIRONMENTAL  
PROTECTION MASSIVE  
MONUMENT 17-84-A21  
N 1080981.11  
E 470836.66

S49° 08' 53"E  
550.27'

N39° 04' 12"E  
866.77'

N14° 25' 20"E  
543.35'

POINT OF  
BEGINNING  
N 1070826.47  
E 470697.14

S42° 38' 02"W  
763.50'  
S20° 36' 42"W  
374.99'

GULF OF MEXICO

CUT 'B'  
AREA ±66.2 ACRES  
2,882,144 SQUARE FT.

N01° 04' 00"E

1598.17'

1489.30'

S01° 04' 00"W

3448.77'

3404.99'

S10° 02' 49"E

450.00'

S79° 57' 11"W  
450.00'



0 600 1200  
GRAPHIC SCALE IN FT

REVISIONS		
DATE	BY	DESCRIPTION

LIDO KEY FLORIDA  
CUT 'B', 'C', AND 'D' SKETCH AND DESCRIPTION  
CUT 'B' PLAN VIEW

CB&I COASTAL PLANNING & ENGINEERING, INC.  
2401 N.W. BOCA RATON BOULEVARD  
BOCA RATON, FLORIDA 33431  
PH: (561) 391-8102  
FAX: (561) 391-8116  
C.O.A. FL #4025  
www.cb&i.com

DATE:  
07/23/15  
BY:  
HN  
COMM NO.:  
150252  
SHEET:  
2 OF 8

c:\Sarasota\Lido Key\150252 City of Sarasota SPP Assist USACE with Permitting\CAD\Easement\150252 PH2BA-Easement.dwg - Aug 28, 2015 @ 4:09pm - christopher.walker

SAID DESCRIBED EASEMENT CONTAINS 2,882,144 SQUARE FEET (66.2 ACRES), MORE OR LESS.

[illegible]

**LIDO KEY FLORIDA**  
**CUT 'B', 'C', AND 'D' SKETCH AND DESCRIPTION**  
**CUT 'B' LEGAL DESCRIPTION**

**CB&I COASTAL PLANNING & ENGINEERING, INC.**

PH. (561) 391-3102  
FAX (561) 391-9116  
C.O.A. FL #4023

2481 N.W. BOCA RATON BOULEVARD  
BOCA RATON, FLORIDA 33431  
[www.CBI.com](http://www.CBI.com)

DATE:  
07/23/15

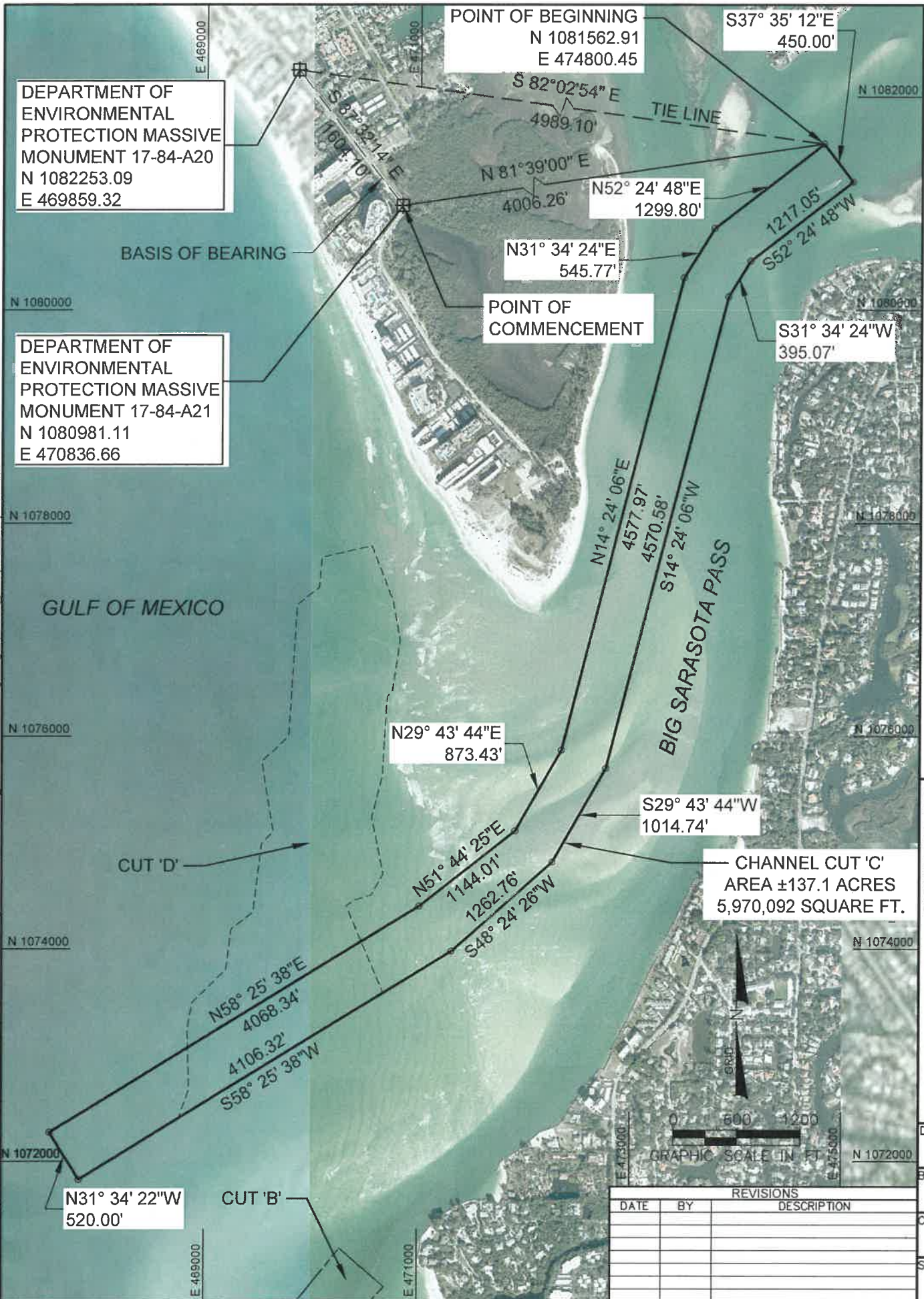
BY: HN

COMM NO. 150252

SHEET:  
3 OF 8



P:\Sarasota\Lido Key\150252 City of Sarasota SPP Assist USACE with Permitting\CAD\Easement\150252\_P\2BA-Easement.dwg - Aug 28, 2015 @ 4:09pm - christopher.walker



**LIDO KEY FLORIDA  
CUT 'B', 'C', AND 'D' SKETCH AND DESCRIPTION  
CHANNEL CUT 'C' PLAN VIEW**

**CB&I COASTAL PLANNING & ENGINEERING, INC.**  
PH: (881) 351-8102  
FAX: (881) 351-9116  
2481 N.W. BOCA RATON BOULEVARD  
BOCA RATON, FLORIDA 33431  
www.cbci.com

**DATE:**  
07/23/15

**BY:**  
HN

**COMM NO.:**  
150252

**SHEET:**  
4 OF 8

P:\Sarasota\Lido Key\150252 City of Sarasota SPP Assist USACE with Permitting\CAD\Easement\150252 PH2BA-Easement.dwg - Aug 28, 2015 @ 4:09pm - christopher.walker

SAID DESCRIBED EASEMENT CONTAINS 5970092 SQUARE FEET  
(137.1 ACRES), MORE OR LESS.

[illegible]

**LIDO KEY FLORIDA  
CUT 'B', 'C', AND 'D' SKETCH AND DESCRIPTION  
CHANNEL CUT 'C' LEGAL DESCRIPTION**

**CB&I COASTAL PLANNING & ENGINEERING, INC.**

3461 N.W. BOCA RATON BOULEVARD  
BOCA RATON, FLORIDA 33431  
PH. (561) 391-4102  
FAX (561) 391-9118  
C.O.A. F. #4023  
[www.CBF.com](http://www.CBF.com)

DATE:

07/23/15

BY:

HN

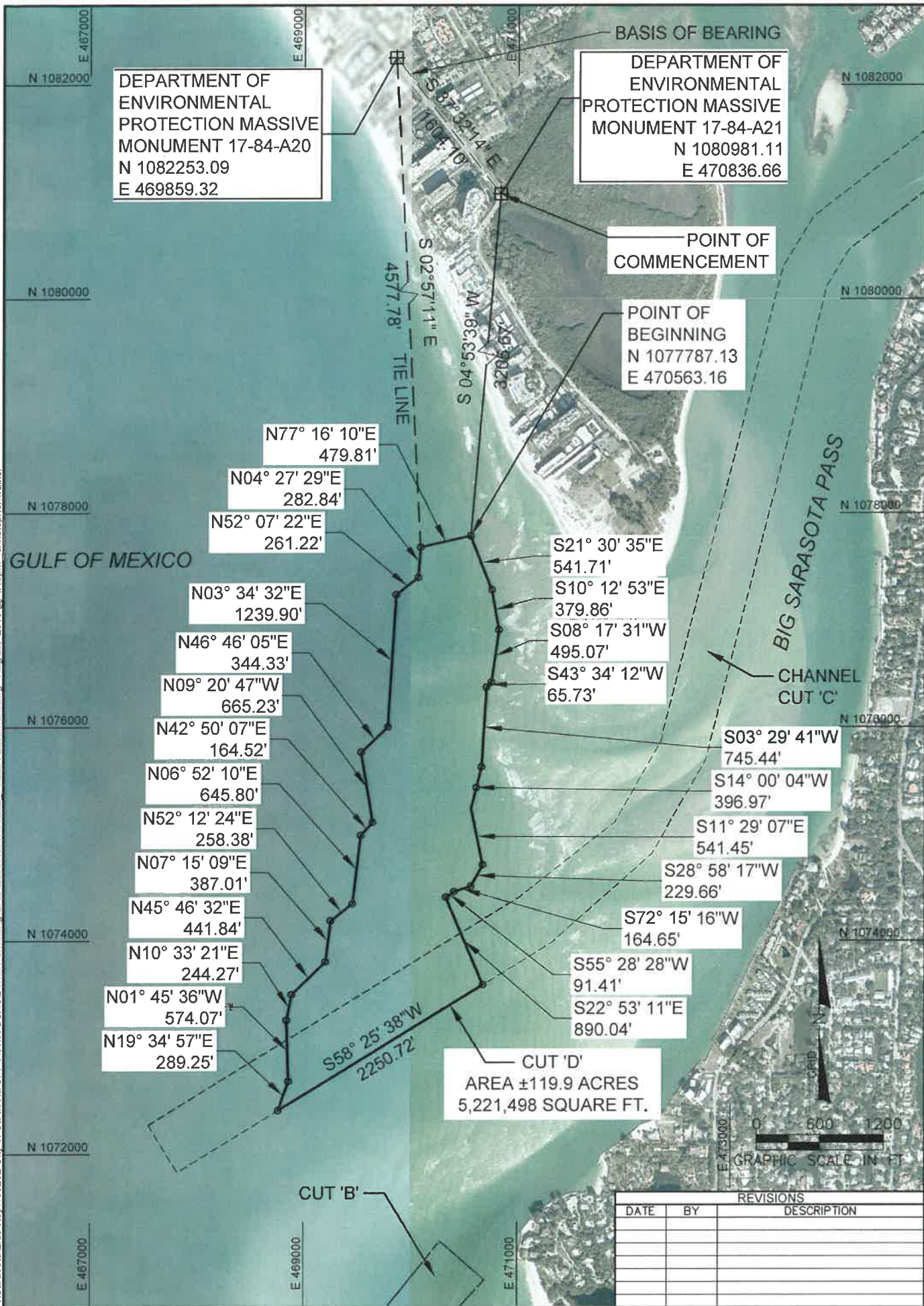
COMM NO. 5

150252

**SHEET:**

5 OF 8





**LIDO KEY FLORIDA  
CUT 'B', 'C', AND 'D' SKETCH AND DESCRIPTION  
CUT 'D' PLAN VIEW**

**CB&I COASTAL PLANNING & ENGINEERING, INC.**

3481 N.W. BOCA RATON BOULEVARD  
BOCA RATON, FLORIDA 33481  
PH. (861) 391-8102  
FAX (861) 391-8118  
C.O.A. FL. 14028  
[www.CBI.com](http://www.CBI.com)

DATE:

07/23/15

BY:

HN

COMM NO. 5

15025

SHEET:

6 OF 8

## LEGAL DESCRIPTION :

A PARCEL OF SUBMERGED LAND LYING APPROXIMATELY 0.15 MILES OFFSHORE FROM SECTION 2 AND 11, TOWNSHIP 37 SOUTH, RANGE 17 EAST, SARASOTA COUNTY, FLORIDA, BEING MORE PARTICULARLY DESCRIBED AS FOLLOWS:

COMMENCING AT FLORIDA DEPARTMENT OF ENVIRONMENTAL PROTECTION (FDEP) MONUMENT 17-84-A21, WITH COORDINATES OF N 1080981.11, E 470836.66 IN THE FLORIDA STATE PLANE COORDINATE SYSTEM, WEST ZONE, NORTH AMERICAN DATUM, 1983/90.

THENCE BEARING S 04°53'39" W, (BEARINGS ARE BASED ON A BEARING OF S 37°32'14" E BETWEEN MASSIVE MONUMENTS 17-84-A20 AND 17-84-A21 PER COORDINATE LISTING BY FDEP FOR SARASOTA COUNTY), AT A DISTANCE OF 3205.67' FEET TO A POINT OF BEGINNING, WITH COORDINATES OF N 1077787.13 AND E 470563.16;

THENCE BEARING S 21°30'35" E A DISTANCE OF 541.71 FEET;  
THENCE BEARING S 10°12'53" E A DISTANCE OF 379.86 FEET;  
THENCE BEARING S 08°17'31" W A DISTANCE OF 495.07 FEET;  
THENCE BEARING S 43°34'12" W A DISTANCE OF 65.73 FEET;  
THENCE BEARING S 03°29'41" W A DISTANCE OF 745.44 FEET;  
THENCE BEARING S 14°00'04" W A DISTANCE OF 396.97 FEET;  
THENCE BEARING S 11°29'07" E A DISTANCE OF 541.45 FEET;  
THENCE BEARING S 28°58'17" W A DISTANCE OF 229.66 FEET;  
THENCE BEARING S 72°15'16" W A DISTANCE OF 164.65 FEET;  
THENCE BEARING S 55°28'28" W A DISTANCE OF 91.41 FEET;  
THENCE BEARING S 22°53'11" E A DISTANCE OF 890.04 FEET;  
THENCE BEARING S 58°25'38" W A DISTANCE OF 2250.72 FEET;  
THENCE BEARING N 19°34'57" E A DISTANCE OF 289.25 FEET;  
THENCE BEARING N 01°45'36" W A DISTANCE OF 574.07 FEET;  
THENCE BEARING N 10°33'21" E A DISTANCE OF 244.27 FEET;  
THENCE BEARING N 45°46'32" E A DISTANCE OF 441.84 FEET;  
THENCE BEARING N 07°15'09" E A DISTANCE OF 387.01 FEET;  
THENCE BEARING N 52°12'24" E A DISTANCE OF 258.38 FEET;  
THENCE BEARING N 06°52'10" E A DISTANCE OF 645.80 FEET;  
THENCE BEARING N 42°50'07" E A DISTANCE OF 164.52 FEET;  
THENCE BEARING N 09°20'47" W A DISTANCE OF 665.23 FEET;  
THENCE BEARING N 46°46'05" E A DISTANCE OF 344.33 FEET;  
THENCE BEARING N 03°34'32" E A DISTANCE OF 1239.90 FEET;  
THENCE BEARING N 52°07'22" E A DISTANCE OF 261.22 FEET;  
THENCE BEARING N 04°27'29" E A DISTANCE OF 282.84 FEET;

SAID POINT IS FURTHER DESCRIBED AS BEING S 02°57'11" E, A DISTANCE OF 4577.78' FEET FROM AFOREMENTIONED FDEP MONUMENT 17-84-A20 WITH COORDINATES OF N 1082253.09 E 469859.32 IN THE FLORIDA STATE PLANE COORDINATE SYSTEM, WEST ZONE, NORTH AMERICAN DATUM, 1983/90.

THENCE BEARING N 77°16'10" E A DISTANCE OF 479.81 FEET TO THE POINT OF BEGINNING.

SAID DESCRIBED EASEMENT CONTAINS 5,221,498 SQUARE FEET (119.9 ACRES), MORE OR LESS.

REVISIONS		
DATE	BY	DESCRIPTION

LIDO KEY FLORIDA  
CUT 'B', 'C', AND 'D' SKETCH AND DESCRIPTION  
CUT 'D' LEGAL DESCRIPTION

CB&I COASTAL PLANNING & ENGINEERING, INC.

PH (851) 951-4102  
FAX (851) 391-4116  
C.O.A. FL 44028

2401 N.W. BOCA RATON BOULEVARD  
BOCA RATON, FLORIDA 33431  
www.CBI.com

DATE:

07/23/15

BY:

HN

COMM NO.:

150252

SHEET:

7 OF 8

## NOTES :


1. THIS IS NOT A FIELD SURVEY; THIS SKETCH IS TO ACCOMPANY LEGAL DESCRIPTION ONLY.
2. LANDS SHOWN HEREON WERE NOT ABSTRACTED FOR EASEMENTS OWNERSHIP, OR RIGHTS-OF-WAY.
3. THE COORDINATES, DISTANCES AND BEARINGS SHOWN HEREON ARE BASED ON THE FLORIDA STATE PLANE COORDINATE SYSTEM, WEST ZONE, NORTH AMERICAN DATUM 1983/90, MERCATOR PROJECTION (NAD83/90), SHOWN IN US SURVEY FEET.
4. UNDERGROUND UTILITIES, IMPROVEMENTS, ETC., IF ANY, HAVE NOT BEEN LOCATED.
5. THIS SURVEY IS NOT VALID WITHOUT THE SIGNATURE AND ORIGINAL RAISED SEAL OF A FLORIDA LICENSED SURVEYOR AND MAPPER.
6. THIS SKETCH AND LEGAL DESCRIPTION ARE NOT FULL AND COMPLETE WITHOUT THE OTHER.
7. ADDITIONS OR DELETIONS TO THIS SKETCH AND DESCRIPTION BY OTHER THAN THE SIGNING PARTY IS PROHIBITED WITHOUT WRITTEN CONSENT OF THE SIGNING PARTY.
8. ALL BEARINGS ARE BASED UPON GRID NORTH AND PRESENTED ON SKETCH AND DESCRIPTION AS TIE LINE BETWEEN FDEP MONUMENTS 17-84-A20 AND 17-84-A21.
9. AERIAL PHOTOGRAPHS DATED: 2014 AND IMAGERY FROM GOOGLE MAP 7-17-2014.
10. TIE LINES SHOWN ON MAP ARE BROKEN LINES ARE NOT TO SCALE.

## LEGEND & ABBREVIATIONS:

CB&I	CHICAGO BRIDGE AND IRON
C.O.A.	CERTIFICATE OF AUTHORIZATION
COMM	COMMISSION
ETC.	ETCETERA
FAC	FLORIDA ADMINISTRATION CODE
⊞	FDEP MASSIVE MONUMENTS
FDEP	FLORIDA DEPARTMENT OF ENVIRONMENTAL PROTECTION
FT	FEET
INC.	INCORPORATED
LS	LAND SURVEYOR
MHW	MEAN HIGH WATER
NO.	NUMBER
NAD	NORTH AMERICAN DATUM
PH.	PHONE
PSM	PROFESSIONAL SURVEYOR AND MAPPER
US	UNITED STATES

## CERTIFICATION :

I HEREBY CERTIFY THAT THE ATTACHED SKETCH AND DESCRIPTION OF THE SUBJECT AREA IS TRUE AND CORRECT TO THE BEST OF MY KNOWLEDGE AND BELIEF AS DELINEATED UNDER MY DIRECT SUPERVISION. I FURTHER CERTIFY THAT THIS SKETCH AND DESCRIPTION MEETS THE STANDARDS OF PRACTICE SET FORTH IN 5J-17 FAC, ADOPTED BY THE FLORIDA BOARD OF PROFESSIONAL SURVEYORS AND MAPPERS, PURSUANT TO FLORIDA STATUTE 472.027.

  
MICHAEL LOWIEC, P.S.M.  
FLORIDA PROFESSIONAL  
SURVEYOR AND MAPPER LS #6846

8/19/2015  
DATE

REVISIONS		
DATE	BY	DESCRIPTION

LIDO KEY FLORIDA  
CUT 'B', 'C', AND 'D' SKETCH AND DESCRIPTION  
NOTES, LEGEND AND CERTIFICATION

CB&I COASTAL PLANNING & ENGINEERING, INC.

2481 NW BOCA RATON BOULEVARD  
BOCA RATON, FLORIDA 33431  
www.cbci.com  
PH: (954) 361-4102  
FAX: (954) 361-4116  
C.O.A. FL. #45229

DATE:

07/23/15

BY:

HN

COMM NO.:

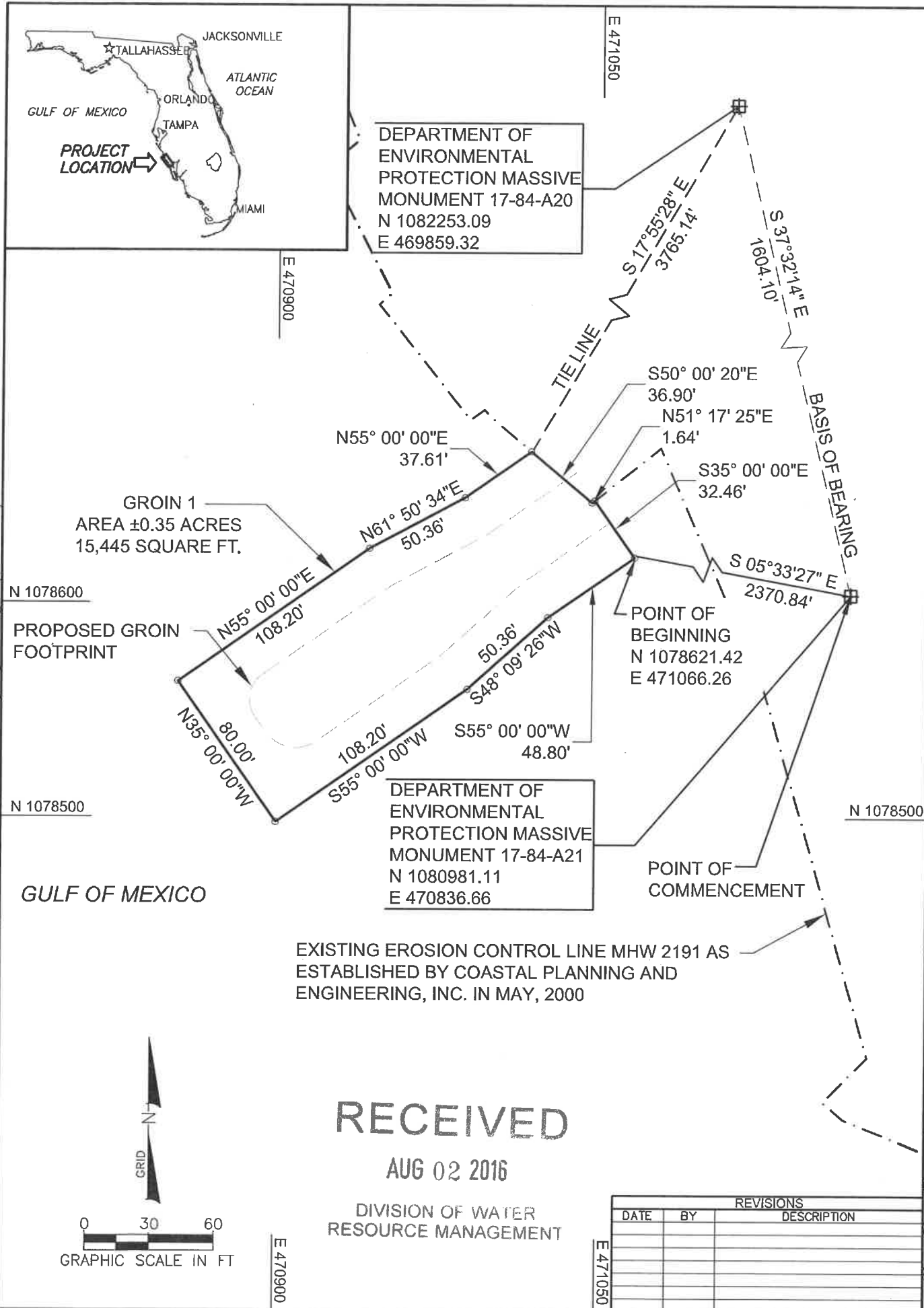
150252

SHEET:

8 OF 8



P:\Sarasota\Lido Key\150252 City of Sarasota SPV Assist USACE with Permitting\CA\150252 Groin-Easement.dwg - Aug 11, 2015 @ 4:45pm - noward.nejib



**LIDO KEY FLORIDA  
GROIN 1 SKETCH AND DESCRIPTION**

**CB&I COASTAL PLANNING & ENGINEERING, INC.**  
2481 N.W. BOCA RATON BOULEVARD  
BOCA RATON, FLORIDA 33431  
WWW.CBI.COM  
PH: (561) 391-8103  
FAX: (561) 391-9116  
C.O.A. FL 44028

DATE: 07/21/15  
BY: GK  
COMM NO.: 150252  
SHEET: 1 OF 3

**RECEIVED**

AUG 02 2016

DIVISION OF WATER  
RESOURCE MANAGEMENT

REVISIONS		
DATE	BY	DESCRIPTION

GRAPHIC SCALE IN FT

## LEGAL DESCRIPTION :

A PARCEL OF SUBMERGED LAND LYING ADJACENT TO SHORELINE FROM SECTION 35, TOWNSHIP 36 SOUTH, RANGE 17 EAST, SARASOTA COUNTY, FLORIDA, BEING MORE PARTICULARLY DESCRIBED AS FOLLOWS:

COMMENCING AT FLORIDA DEPARTMENT OF ENVIRONMENTAL PROTECTION (FDEP) 2ND ORDER MONUMENT 17-84-A21, WITH COORDINATES OF N 1080981.11, E 470836.66 IN THE FLORIDA STATE PLANE COORDINATE SYSTEM, WEST ZONE, NORTH AMERICAN DATUM, 1983/90.

THENCE BEARING S 05°33'27" E, (BEARINGS ARE BASED ON A BEARING OF S 37°32'14" E BETWEEN 2ND ORDER MONUMENTS 17-84-A20 AND 17-84-A21 PER COORDINATE LISTING BY FDEP FOR SARASOTA COUNTY), AT A DISTANCE OF 2370.84 FEET TO THE POINT OF BEGINNING, WITH COORDINATES OF N1078621.42 AND E 471066.26; SAID POINT OF BEGINNING ALSO LYING ON EROSION CONTROL LINE MHW 2191 AS ESTABLISHED BY COASTAL PLANNING AND ENGINEERING, INC. IN MAY, 2000.

THENCE BEARING S 55°00'00" W A DISTANCE OF 48.80 FEET;  
THENCE BEARING S 48°09'26" W A DISTANCE OF 50.36 FEET;  
THENCE BEARING S 55°00'00" W A DISTANCE OF 108.20 FEET;  
THENCE BEARING N 35°00'00" W A DISTANCE OF 80.00 FEET;  
THENCE BEARING N 55°00'00" E A DISTANCE OF 108.20 FEET;  
THENCE BEARING N 61°50'34" E A DISTANCE OF 50.36 FEET;  
THENCE BEARING N 55°00'00" E A DISTANCE OF 37.61 FEET;  
SAID POINT IS FURTHER DESCRIBED AS BEING S 17°55'28" E,  
A DISTANCE OF 3765.14 FEET FROM AFOREMENTIONED FDEP MONUMENT 17-84-A20 WITH COORDINATES OF N 1082253.09 E 469859.32 IN THE FLORIDA STATE PLANE COORDINATE SYSTEM, WEST ZONE, NORTH AMERICAN DATUM, 1983/90,

THE FOLLOWING THREE COURSES RUN ALONG PREVIOUSLY DESCRIBED EROSION CONTROL LINE;

THENCE BEARING S 50°00'20" E A DISTANCE OF 36.90 FEET;  
THENCE BEARING N 51°17'25" E A DISTANCE OF 1.64 FEET;  
THENCE BEARING S 35°00'00" E A DISTANCE OF 32.46 FEET  
TO THE POINT OF BEGINNING.

SAID SKETCH AND DESCRIPTION OF PARCEL CONTAINS 15,445 SQUARE FEET (0.35 ACRES), MORE OR LESS.

**RECEIVED**

**AUG 02 2016**

**DIVISION OF WATER  
RESOURCE MANAGEMENT**

REVISIONS		
DATE	BY	DESCRIPTION

**LIDO KEY FLORIDA  
GROIN 1 SKETCH AND DESCRIPTION**

**CB&I COASTAL PLANNING & ENGINEERING, INC.**  
2481 NW BOCA RATON BOULEVARD  
BOCA RATON, FLORIDA 33437  
WWW.CBI.COM  
PH: (561) 391-4102  
FAX: (561) 391-4116  
C.O.A. FL. #4028

DATE:

07/21/15

BY:

GK

COMM NO.:

150252

SHEET:

2 OF 3

## NOTES :

1. THIS IS NOT A FIELD SURVEY; THIS SKETCH IS TO ACCOMPANY LEGAL DESCRIPTION ONLY.
2. LANDS SHOWN HEREON WERE NOT ABSTRACTED FOR EASEMENTS OWNERSHIP, OR RIGHTS-OF-WAY.
3. THE COORDINATES, DISTANCES AND BEARINGS SHOWN HEREON ARE BASED ON THE FLORIDA STATE PLANE COORDINATE SYSTEM, WEST ZONE, NORTH AMERICAN DATUM 1983/90, MERCATOR PROJECTION (NAD83/90), SHOWN IN US SURVEY FEET.
4. UNDERGROUND UTILITIES, IMPROVEMENTS, ETC. HAVE NOT BEEN LOCATED.
5. THIS SURVEY IS NOT VALID WITHOUT THE SIGNATURE AND ORIGINAL RAISED SEAL OF A FLORIDA LICENSED SURVEYOR AND MAPPER.
6. THIS SKETCH AND LEGAL DESCRIPTION ARE NOT FULL AND COMPLETE WITHOUT THE OTHER.
7. ADDITIONS OR DELETIONS TO THIS SKETCH AND DESCRIPTION BY OTHER THAN THE SIGNING PARTY IS PROHIBITED WITHOUT WRITTEN CONSENT OF THE SIGNING PARTY.
8. ALL BEARINGS ARE BASED UPON GRID NORTH AND PRESENTED ON SKETCH AND DESCRIPTION AS TIE LINE BETWEEN FDEP MONUMENTS 17-84-A20 AND 17-84-A21.
9. SURVEY TIE LINES, BASIS OF BEARING AND POINT OF COMMENCEMENT TO POINT OF BEGINNING ARE BROKEN LINES AND ARE NOT BE TO SCALE.

## LEGEND & ABBREVIATIONS:

CB&I	CHICAGO BRIDGE AND IRON
C.O.A.	CERTIFICATE OF AUTHORIZATION
COMM	COMMISSION
ETC.	ETCETERA
FAC	FLORIDA ADMINISTRATION CODE
⊞	FDEP MASSIVE MONUMENTS
FDEP	FLORIDA DEPARTMENT OF ENVIRONMENTAL PROTECTION
FT	FEET
INC.	INCORPORATED
LS	LAND SURVEYOR
MHW	MEAN HIGH WATER
NO.	NUMBER
NAD	NORTH AMERICAN DATUM
PH.	PHONE
PSM	PROFESSIONAL SURVEYOR AND MAPPER
US	UNITED STATES


# RECEIVED

AUG 02 2016

DIVISION OF WATER  
RESOURCE MANAGEMENT

## CERTIFICATION :

I HEREBY CERTIFY THAT THE ATTACHED SKETCH AND DESCRIPTION OF THE SUBJECT AREA IS TRUE AND CORRECT TO THE BEST OF MY KNOWLEDGE AND BELIEF AS DELINEATED UNDER MY DIRECT SUPERVISION. I FURTHER CERTIFY THAT THIS SKETCH AND DESCRIPTION MEETS THE STANDARDS OF PRACTICE SET FORTH IN 5J-17 FAC, ADOPTED BY THE FLORIDA BOARD OF PROFESSIONAL SURVEYORS AND MAPPERS, PURSUANT TO FLORIDA STATUTE 472.027.

  
MICHAEL LOWIEC, P.S.M.  
FLORIDA PROFESSIONAL  
SURVEYOR AND MAPPER LS #6846

8/14/2015  
DATE

REVISIONS		
DATE	BY	DESCRIPTION

LIDO KEY FLORIDA  
GROIN 1 SKETCH AND DESCRIPTION  
NOTES, LEGEND AND CERTIFICATION

CB&I COASTAL PLANNING & ENGINEERING, INC.

PH. (561) 391-5102  
FAX. (561) 391-9116  
C.O.A. FL #4028

2481 N.W. BOCA RATON BOULEVARD  
BOCA RATON, FLORIDA 33431  
WWW.CBI.COM

DATE:

07/21/15

BY:

GK

COMM NO.:

150252

SHEET:

3 OF 3





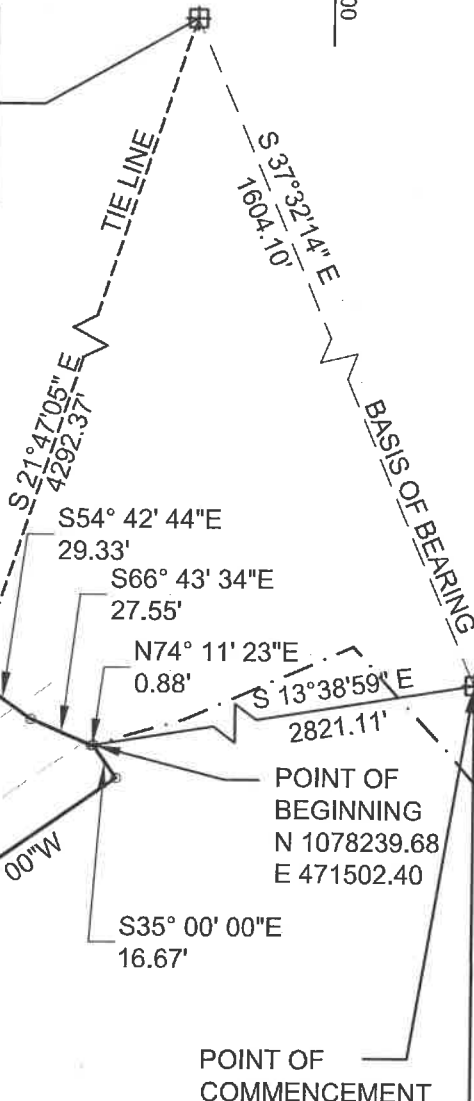
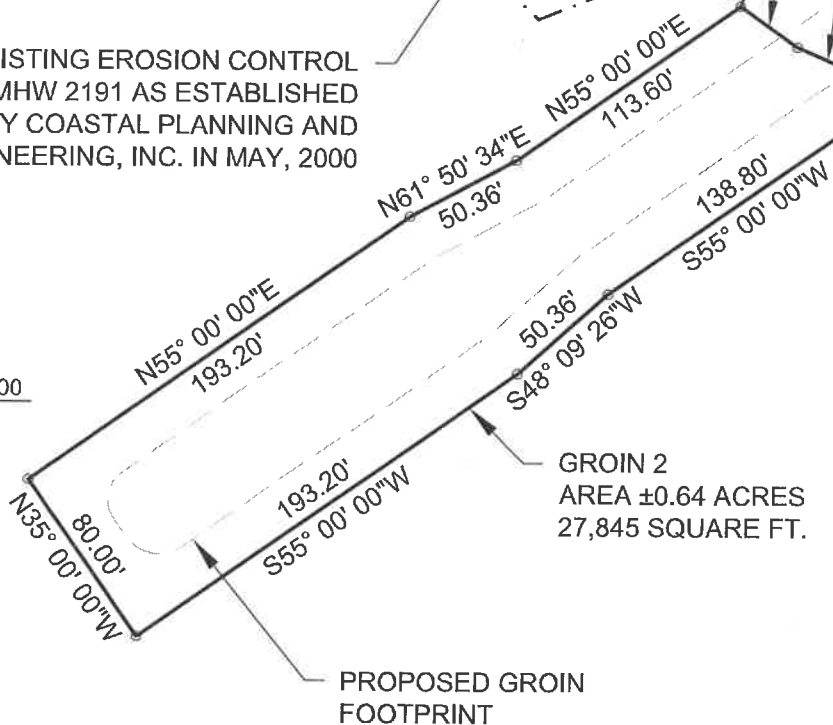
DEPARTMENT OF  
ENVIRONMENTAL  
PROTECTION MASSIVE  
MONUMENT 17-84-A20  
N 1082253.09  
E 469859.32

E 471600

E 471250

EXISTING EROSION CONTROL  
LINE MHW 2191 AS ESTABLISHED  
BY COASTAL PLANNING AND  
ENGINEERING, INC. IN MAY, 2000

N 1078100



DEPARTMENT OF  
ENVIRONMENTAL  
PROTECTION MASSIVE  
MONUMENT 17-84-A21  
N 1080981.11  
E 470836.66

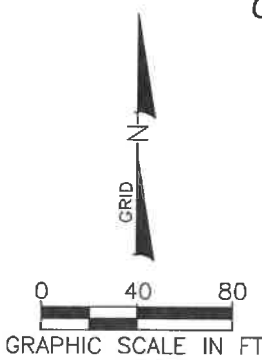
LIDO KEY FLORIDA  
GROIN 2 SKETCH AND DESCRIPTION

CB&I COASTAL PLANNING & ENGINEERING, INC.

2481 N.W. BOCA RATON BOULEVARD  
BOCA RATON, FLORIDA 33431  
www.CBI.com  
PH: (561) 391-4102  
FAX: (561) 391-5116  
C.O.A. FL #4028

N 1077900

E 471550



REVISIONS		
DATE	BY	DESCRIPTION

DATE:  
07/21/15  
BY:  
GK  
COMM NO.:  
150252  
SHEET:  
1 OF 3

P:\Sarasota\lido key\150252 City of Sarasota SPP Assist USACE with Permitting\CAD\Easement\150252 Groin-Easement.dwg - Aug 11, 2015 10:45:59 AM - Howard Reid

## LEGAL DESCRIPTION :

A PARCEL OF SUBMERGED LAND LYING ADJACENT TO SHORELINE FROM SECTION 35, TOWNSHIP 36 SOUTH, RANGE 17 EAST, SARASOTA COUNTY, FLORIDA, BEING MORE PARTICULARLY DESCRIBED AS FOLLOWS:

COMMENCING AT FLORIDA DEPARTMENT OF ENVIRONMENTAL PROTECTION (FDEP) 2ND ORDER MONUMENT 17-84-A21, WITH COORDINATES OF N 1080981.11, E 470836.66 IN THE FLORIDA STATE PLANE COORDINATE SYSTEM, WEST ZONE, NORTH AMERICAN DATUM, 1983/90.

THENCE BEARING S 13°38'59" E, (BEARINGS ARE BASED ON A BEARING OF S 37°32'14" E BETWEEN 2ND ORDER MONUMENTS 17-84-A20 AND 17-84-A21 PER COORDINATE LISTING BY FDEP FOR SARASOTA COUNTY), AT A DISTANCE OF 2821.11 FEET TO THE POINT OF BEGINNING, WITH COORDINATES OF N 1078239.68 AND E 471502.40; SAID POINT OF BEGINNING ALSO LYING ON EROSION CONTROL LINE MHW 2191 AS ESTABLISHED BY COASTAL PLANNING AND ENGINEERING, INC. IN MAY, 2000.

THENCE BEARING S 35°00'00" E A DISTANCE OF 16.67 FEET;  
THENCE BEARING S 55°00'00" W A DISTANCE OF 138.80 FEET;  
THENCE BEARING S 48°09'26" W A DISTANCE OF 50.36 FEET;  
THENCE BEARING S 55°00'00" W A DISTANCE OF 193.20 FEET;  
THENCE BEARING N 35°00'00" W A DISTANCE OF 80.00 FEET;  
THENCE BEARING N 55°00'00" E A DISTANCE OF 193.20 FEET;  
THENCE BEARING N 61°50'34" E A DISTANCE OF 50.36 FEET;  
THENCE BEARING N 55°00'00" E A DISTANCE OF 113.60 FEET;  
SAID POINT IS FURTHER DESCRIBED AS BEING S 21°47'05" E, A DISTANCE OF 4292.37 FEET FROM AFOREMENTIONED FDEP MONUMENT 17-84-A20 HAVING ITS COORDINATES N 1082253.09 E 469859.32 IN THE FLORIDA STATE PLANE COORDINATE SYSTEM, WEST ZONE, NORTH AMERICAN DATUM, 1983/90,

THE FOLLOWING THREE COURSES RUN ALONG PREVIOUSLY DESCRIBED EROSION CONTROL LINE;

THENCE BEARING S 54°42'44" E A DISTANCE OF 29.33 FEET;  
THENCE BEARING S 66°43'34" E A DISTANCE OF 27.55 FEET;  
THENCE BEARING N 74°11'23" E A DISTANCE OF 0.88 FEET  
TO THE POINT OF BEGINNING.

SAID SKETCH AND DESCRIPTION OF PARCEL CONTAINS 27,845 SQUARE FEET (0.64 ACRES), MORE OR LESS.

LIDO KEY FLORIDA  
GROIN 2 SKETCH AND DESCRIPTION

CB&I COASTAL PLANNING & ENGINEERING, INC.

PH. (851) 391-8102  
FAX (851) 391-3116  
C.O.A. #4028

2481 N.W. BOCA RATON BOULEVARD  
BOCA RATON, FLORIDA 33431  
WWW.CBI.COM

DATE:

07/21/15

BY:

GK

COMM NO.:

150252

SHEET:

2 OF 3

REVISIONS		
DATE	BY	DESCRIPTION

## NOTES :


1. THIS IS NOT A FIELD SURVEY; THIS SKETCH IS TO ACCOMPANY LEGAL DESCRIPTION ONLY.
2. LANDS SHOWN HEREON WERE NOT ABSTRACTED FOR EASEMENTS OWNERSHIP, OR RIGHTS-OF-WAY.
3. THE COORDINATES, DISTANCES AND BEARINGS SHOWN HEREON ARE BASED ON THE FLORIDA STATE PLANE COORDINATE SYSTEM, WEST ZONE, NORTH AMERICAN DATUM 1983/90, MERCATOR PROJECTION (NAD83/90), SHOWN IN US SURVEY FEET.
4. UNDERGROUND UTILITIES, IMPROVEMENTS, ETC. HAVE NOT BEEN LOCATED.
5. THIS SURVEY IS NOT VALID WITHOUT THE SIGNATURE AND ORIGINAL RAISED SEAL OF A FLORIDA LICENSED SURVEYOR AND MAPPER.
6. THIS SKETCH AND LEGAL DESCRIPTION ARE NOT FULL AND COMPLETE WITHOUT THE OTHER.
7. ADDITIONS OR DELETIONS TO THIS SKETCH AND DESCRIPTION BY OTHER THAN THE SIGNING PARTY IS PROHIBITED WITHOUT WRITTEN CONSENT OF THE SIGNING PARTY.
8. ALL BEARINGS ARE BASED UPON GRID NORTH AND PRESENTED ON SKETCH AND DESCRIPTION AS TIE LINE BETWEEN FDEP MONUMENTS 17-84-A20 AND 17-84-A21.
9. SURVEY TIE LINES, BASIS OF BEARING AND POINT OF COMMENCEMENT TO POINT OF BEGINNING ARE BROKEN LINES AND ARE NOT BE TO SCALE.

## LEGEND & ABBREVIATIONS:

CB&I	CHICAGO BRIDGE AND IRON
C.O.A.	CERTIFICATE OF AUTHORIZATION
COMM	COMMISSION
ETC.	ETCETERA
FAC	FLORIDA ADMINISTRATION CODE
⊕	FDEP MASSIVE MONUMENTS
FDEP	FLORIDA DEPARTMENT OF ENVIRONMENTAL PROTECTION
FT	FEET
INC.	INCORPORATED
LS	LAND SURVEYOR
MHW	MEAN HIGH WATER
NO.	NUMBER
NAD	NORTH AMERICAN DATUM
PH.	PHONE
PSM	PROFESSIONAL SURVEYOR AND MAPPER
US	UNITED STATES

## CERTIFICATION :

I HEREBY CERTIFY THAT THE ATTACHED SKETCH AND DESCRIPTION OF THE SUBJECT AREA IS TRUE AND CORRECT TO THE BEST OF MY KNOWLEDGE AND BELIEF AS DELINEATED UNDER MY DIRECT SUPERVISION. I FURTHER CERTIFY THAT THIS SKETCH AND DESCRIPTION MEETS THE STANDARDS OF PRACTICE SET FORTH IN 5J-17 FAC, ADOPTED BY THE FLORIDA BOARD OF PROFESSIONAL SURVEYORS AND MAPPERS, PURSUANT TO FLORIDA STATUTE 472.027.

  
MICHAEL LOWIEC, P.S.M.  
FLORIDA PROFESSIONAL  
SURVEYOR AND MAPPER LS #6846

8/14/2015  
DATE

REVISIONS		
DATE	BY	DESCRIPTION

LIDO KEY FLORIDA  
GROIN 2 SKETCH AND DESCRIPTION  
NOTES, LEGEND AND CERTIFICATION

CB&I COASTAL PLANNING & ENGINEERING, INC.  
2481 N.W. BOCA RATON BOULEVARD  
BOCA RATON, FLORIDA 33431  
PH. (561) 384-4103  
FAX (561) 381-9116  
WWW.CBI.COM  
C.O.A. FL #4028

DATE:

07/21/15

BY:

GK

COMM NO.:

150252

SHEET:

3 OF 3