

ATTACHMENT NO. 12
EROSION CONTROL LINE

ATTACHMENT NO. 12
EROSION CONTROL LINE

The Erosion Control Line was established in 1993 for northern segment of Lido Key (R-35 to R-40). This active ECL is on file with FDEP for the project area as survey file no. 1989.

The Erosion Control Line was established in 1999 for southern segment R-40 to R-44+68.92. This active ECL is on file with FDEP for the project area as survey file no. 2191.

P:\Sarasota\Lido Key\150252 City of Sarasota SPP Assist USACE with Permitting\FDEP Permit\Attach No. 12 - ECL.doc

CERTIFICATE OF ACCEPTANCE AND RECORDING
OF COUNTY CLERK :

ACCEPTED FOR FILES AND RECORDED IN THE
PUBLIC RECORDS OF SARASOTA COUNTY, FLORIDA,
THIS _____ DAY OF _____, 19____, IN SARASOTA
COUNTY PLAT BOOK _____ PAGES
PURSUANT TO THE PROVISIONS OF CHAPTER
161.161, FLORIDA STATUTES.

KAREN E. RUSHING, CLERK OF COURT
SARASOTA COUNTY, FLORIDA

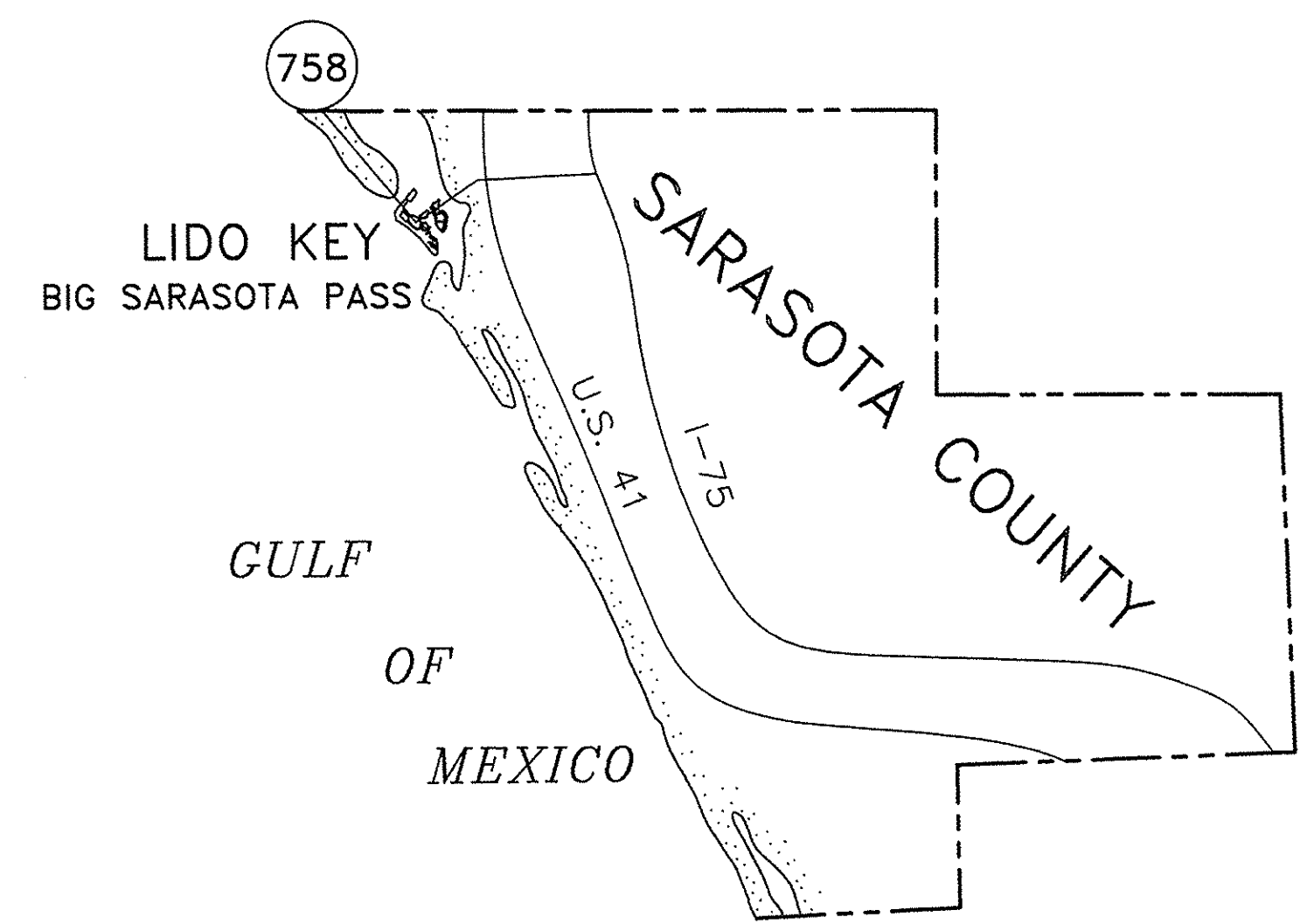
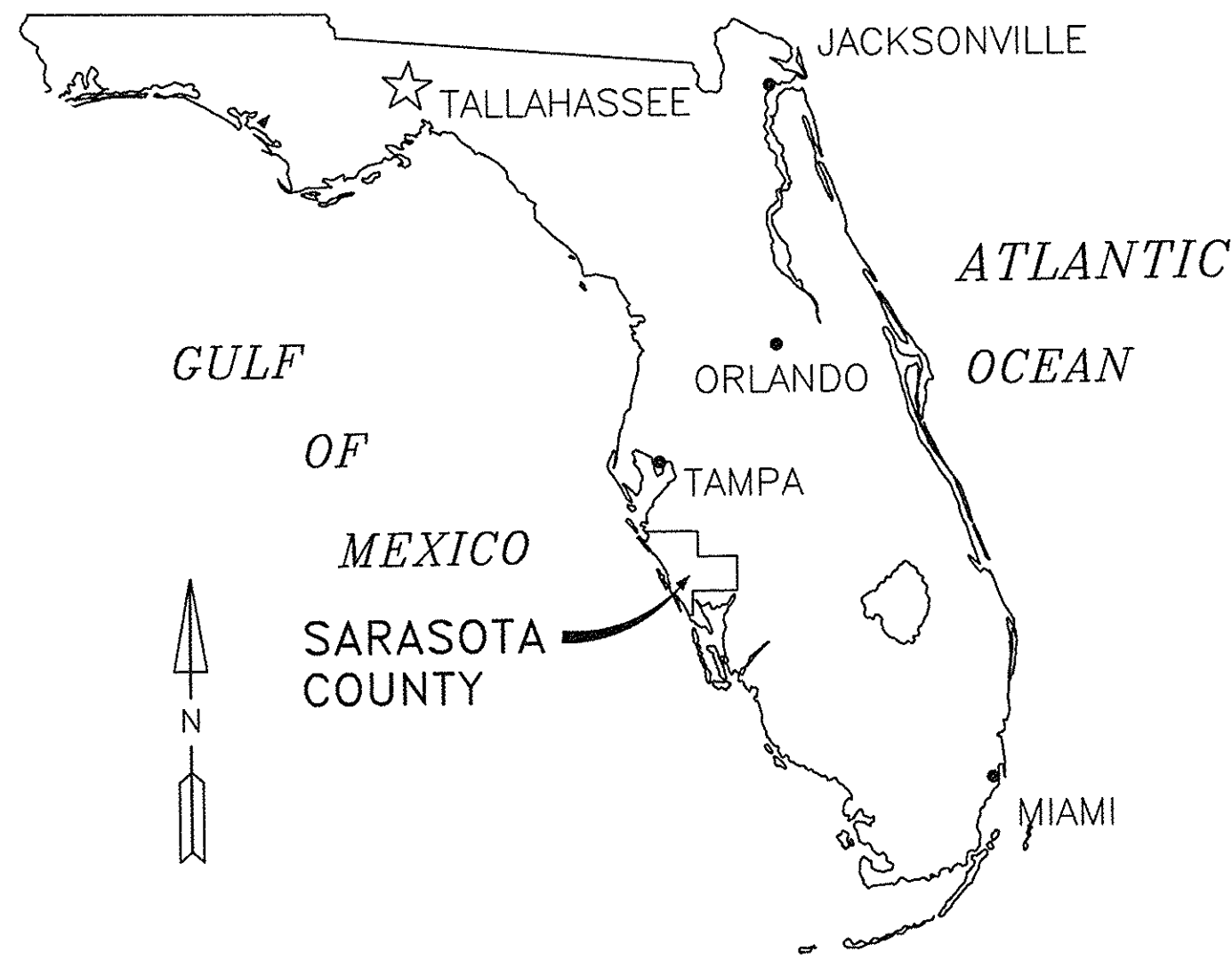
MEAN HIGH WATER LINE SURVEY AND PROPOSED EROSION CONTROL LINE

SECTIONS 27, 34 AND 35, TOWNSHIP 36 SOUTH, RANGE 17 EAST

CITY OF SARASOTA, SARASOTA COUNTY, FLORIDA

TOTAL LENGTH = 0.94 MILES

PREPARED BY
COASTAL PLANNING & ENGINEERING, INC.
2481 N.W. Boca Raton Blvd., Boca Raton, Fl. 33431
(561) 391-8102



- LEGEND :**
- + - SET #5 IRON ROD W/RED CAP,"REF PT 4549"
 - ▣ - FD. DNR RANGE MONUMENT
 - △ - FD.DNR SECOND ORDER STATION
- ABBREVIATIONS :**
- | | | |
|------|---|---|
| CPE | - | COASTAL PLANNING & ENGINEERING, INC. |
| DNR | - | FLORIDA DEPARTMENT OF NATURAL RESOURCES |
| CM | - | CONCRETE MONUMENT |
| MHWL | - | MEAN HIGH WATER LINE |
| ECL | - | EROSION CONTROL LINE |
| NGVD | - | NATIONAL GEODETIC VERTICAL DATUM, 1929 |
| FD | - | FOUND |
| EL | - | ELEVATION |
| NTS | - | NOT TO SCALE |

- NOTES :**
- COORDINATES AND BEARINGS SHOWN HEREON ARE BASED ON NORTH AMERICAN DATUM, 1927, FLORIDA STATE PLANE COORDINATE SYSTEM, WEST ZONE, MERCATOR PROJECTION.
 - THIS DOCUMENT IS RECORDED IN THE PUBLIC REPOSITORY OF THE FLORIDA DEPT. OF NATURAL RESOURCES, MEAN HIGH WATER SURVEY FILE NO. 1989
 - THIS SURVEY IS NOT VALID UNLESS SEALED WITH AN EMBOSSED SURVEYOR'S SEAL.
 - THE M.H.W.L., AS SURVEYED ON AUGUST 18, 1993, AND THE EROSION CONTROL LINE ARE ONE AND THE SAME.
 - THE E.C.L. COMMENCES AT THE MEAN HIGH WATER LINE NEAR DNR RANGE MONUMENT R-40 AND CONTINUES ALONG THE M.H.W.L. NORTHWESTERLY AND TERMINATES AT THE MEAN HIGH WATER LINE NEAR DNR RANGE MONUMENT R-35.
 - LANDS SHOWN HEREON WERE NOT ABSTRACTED FOR EASEMENTS, OWNERSHIP, OR RIGHTS-OF-WAY.
 - THE ELEVATION OF THE E.C.L. (1.27' NGVD) WAS INTERPOLATED BETWEEN NATIONAL OCEAN SERVICE, TIDE STATION #872-5858 (VENICE AIRPORT - EL. 1.35 FT. NGVD (1929)) AND #872-6243 (ANNA MARIA PIER - EL. 1.21 FT. NGVD (1929)) UTILIZING THE NATIONAL TIDAL EPOCH OF 1960-1978).
 - ALL ELEVATIONS SHOWN HEREON ARE BASED ON THE NATIONAL GEODETIC VERTICAL DATUM, 1929.
 - THE TOTAL LENGTH OF EROSION CONTROL LINE IS 4953.13'.
 - DATE OF AERIAL PHOTOGRAPHY : MARCH 11, 1998.

APPROVALS :

CERTIFICATE OF APPROVAL OF BOARD OF COUNTY COMMISSIONERS

THIS EROSION CONTROL LINE PLAT WAS APPROVED BY THE BOARD OF COUNTY COMMISSIONERS OF SARASOTA COUNTY, FLORIDA AT ITS MEETING ON _____ 19____, PURSUANT TO THE PROVISIONS OF CHAPTER 161.161, FLORIDA STATUTES.

ATTEST
CLERK OF THE CIRCUIT COURT

BY: _____

DEPUTY CLERK

SHANNON H. STAUB
SARASOTA COUNTY COMMISSION

STATE OF FLORIDA
DEPARTMENT OF ENVIRONMENTAL PROTECTION

KNOW ALL PERSONS BY THESE PRESENTS: THAT THE CHIEF OF THE BUREAU OF SURVEY AND MAPPING OF THE DIVISION OF STATE LANDS, DEPARTMENT OF ENVIRONMENTAL PROTECTION OF THE STATE OF FLORIDA HEREBY APPROVES THIS PLAT.

ON THIS _____ DAY OF _____ 19____.

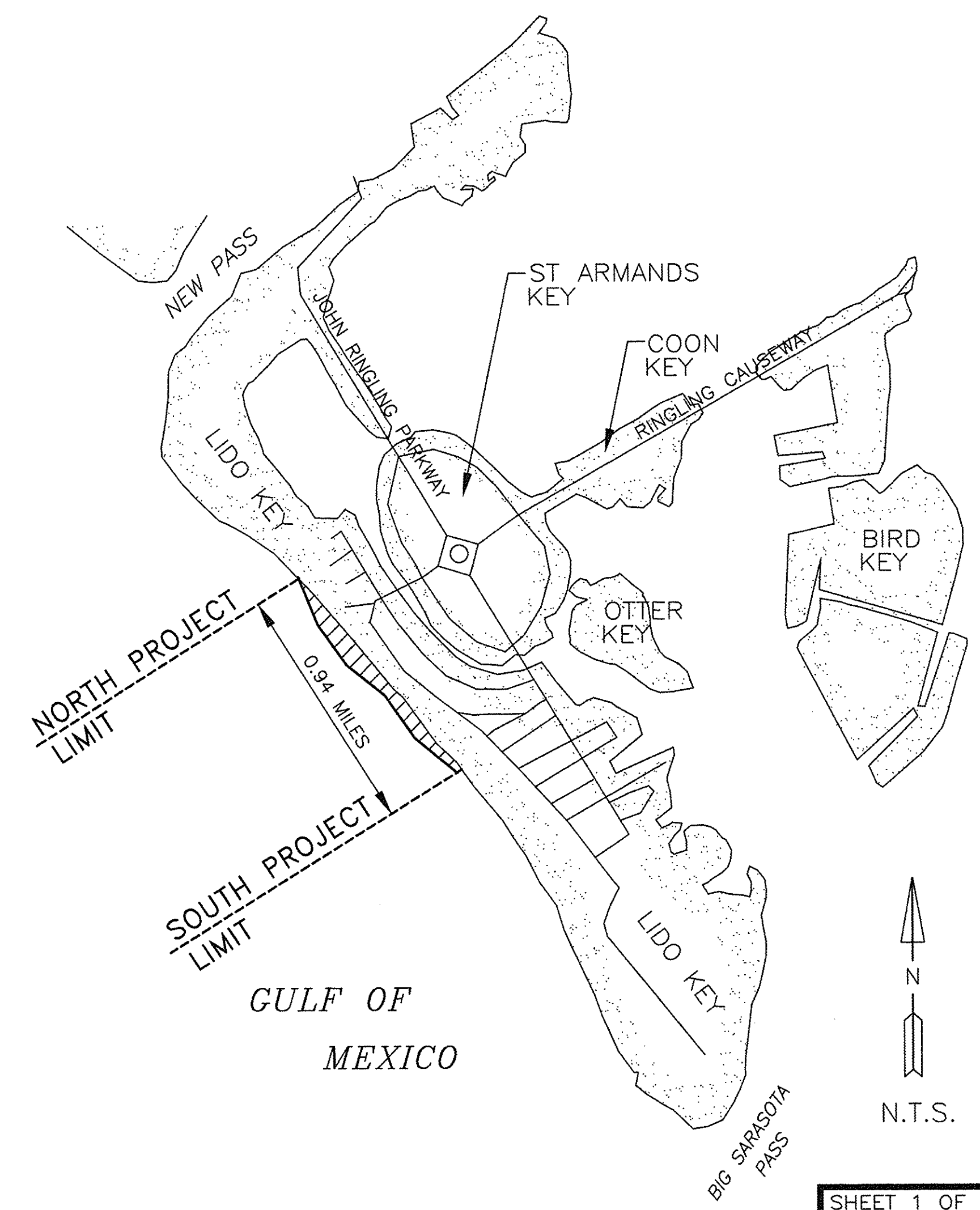
TERRY E. WILKINSON, CHIEF
BUREAU OF SURVEY AND MAPPING

CERTIFICATION :

I HEREBY CERTIFY THAT THE ATTACHED MEAN HIGH WATER LINE SURVEY IS AN ACCURATE REPRESENTATION OF THE MEAN HIGH WATER LINE AS IT WAS FIELD LOCATED ON AUGUST 18, 1993. A BEACH NOURISHMENT PROJECT HAS BEEN COMPLETED IN 1998, THEREFORE THIS AFTER-TH-FACT MEAN HIGH WATER SURVEY DEPICTS THE PRENOURISHMENT MHW LINE ON RECTIFIED AERIAL PHOTOGRAPHS DATED MARCH 11, 1998, AND IS TRUE AND CORRECT TO THE BEST OF MY KNOWLEDGE AND BELIEF AND MEETS THE MINIMUM TECHNICAL STANDARDS SET FORTH IN CHAPTER 21 HH-6 ADOPTED BY THE FLORIDA BOARD OF LAND SURVEYORS PURSUANT TO SECTION 472.027 OF THE FLORIDA STATUTES AND CONFORMS WITH CHAPTER 177, PART II, OF THE FLORIDA STATUTES.

William R. Chase
WILLIAM R. CHASE, P.S.M.
FLORIDA REGISTERED SURVEYOR #4051

Aug. 18, 1993
DATE *wrc*

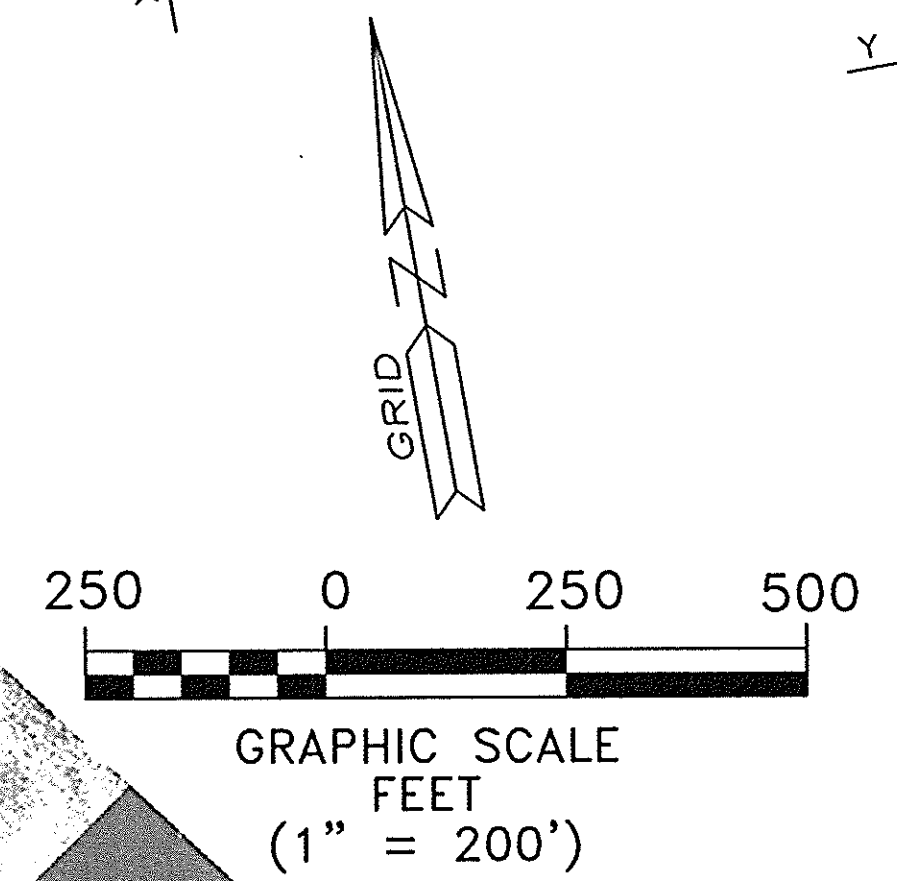


1989



DESCRIPTION OF EROSION CONTROL LINE
(MEAN HIGH WATER LINE 08/18/93)
A LINE LYING IN SECTION 27, 34, AND 35, TOWNSHIP 36 SOUTH, RANGE 17 EAST, CITY OF SARASOTA, SARASOTA COUNTY, FLORIDA, BEING MORE PARTICULARLY DESCRIBED AS FOLLOWS:
COMMENCING FROM THE FLORIDA DEPARTMENT OF NATURAL RESOURCES (DNR) SECOND ORDER STATION 17-84-A21A, HAVING FOR ITS COORDINATES X=314,353.879, Y=1,080,292.731, IN THE FLORIDA STATE PLANE COORDINATE SYSTEM, WEST ZONE, MERCATOR PROJECTION, NORTH AMERICAN DATUM, 1927; THENCE ON A GRID BEARING OF N 62°58'33" W, A DISTANCE OF 815.69 FEET (X=313,627.25, Y=1,080,663.36) TO THE POINT OF BEGINNING OF SAID EROSION CONTROL LINE.
THENCE N 29°26'54" W, A DISTANCE OF 451.50 FEET (X=313,433.24, Y=1,081,071.05); THENCE N 27°44'31" W, A DISTANCE OF 487.73 FEET (X=313,206.21, Y=1,081,502.71); THENCE N 36°38'45" W, A DISTANCE OF 615.09 FEET (X=312,839.08, Y=1,081,996.23); THENCE N 40°51'54" W, A DISTANCE OF 365.23 FEET (X=312,600.12, Y=1,082,272.43); SAID POINT BEING 327.71 FEET AND A BEARING S 44°54'53" W, FROM DNR R-38 HAVING STATE PLANE COORDINATES OF X=312,831.50, Y=1,082,504.50; THENCE N 32°30'36" W, A DISTANCE OF 578.08 FEET (X=312,289.44, Y=1,082,759.93); THENCE N 36°47'06" W, A DISTANCE OF 384.06 FEET (X=312,059.46, Y=1,083,067.52); THENCE N 36°37'05" W, A DISTANCE OF 634.43 FEET (X=311,681.03, Y=1,083,576.76); THENCE N 38°09'36" W, A DISTANCE OF 399.33 FEET (X=311,434.30, Y=1,083,890.72); THENCE N 41°39'11" W, A DISTANCE OF 625.18 FEET (X=311,018.80, Y=1,084,357.84); THENCE N 47°31'58" W, A DISTANCE OF 412.51 FEET (X=310,714.51, Y=1,084,636.35) TO THE POINT OF TERMINATION OF SAID EROSION CONTROL LINE, SAID POINT LYING N 48°13'55" W AND A DISTANCE OF 1974.42 FEET FROM THE DNR SECOND ORDER STATION 17-84-A19 HAVING FOR ITS COORDINATES X=312,187.121 AND Y=1,083,321.163 IN SAID FLORIDA STATE PLANE COORDINATE SYSTEM, WEST ZONE.

TOTAL LENGTH: 4593.13 FEET OR 0.94 MILES



COASTAL PLANNING & ENGINEERING, INC.

JACKSONVILLE
SARASOTA
3011 S. 102
3011 S. 102

FLORIDA

PROJECT: MEAN HIGH WATER SURVEY AND PROPOSED EROSION CONTROL LINE CITY OF SARASOTA, SARASOTA COUNTY, FLORIDA

DRAWN BY: AMB

CHECKED BY: ES

DATE: 6/30/99

COMM. NO.: 8486.17

SCALE: AS NOTED

SHEET: 2 OF 2

REVISION DATE:

MEAN HIGH WATER LINE SURVEY AND PROPOSED EROSION CONTROL LINE SOUTH LIDO KEY

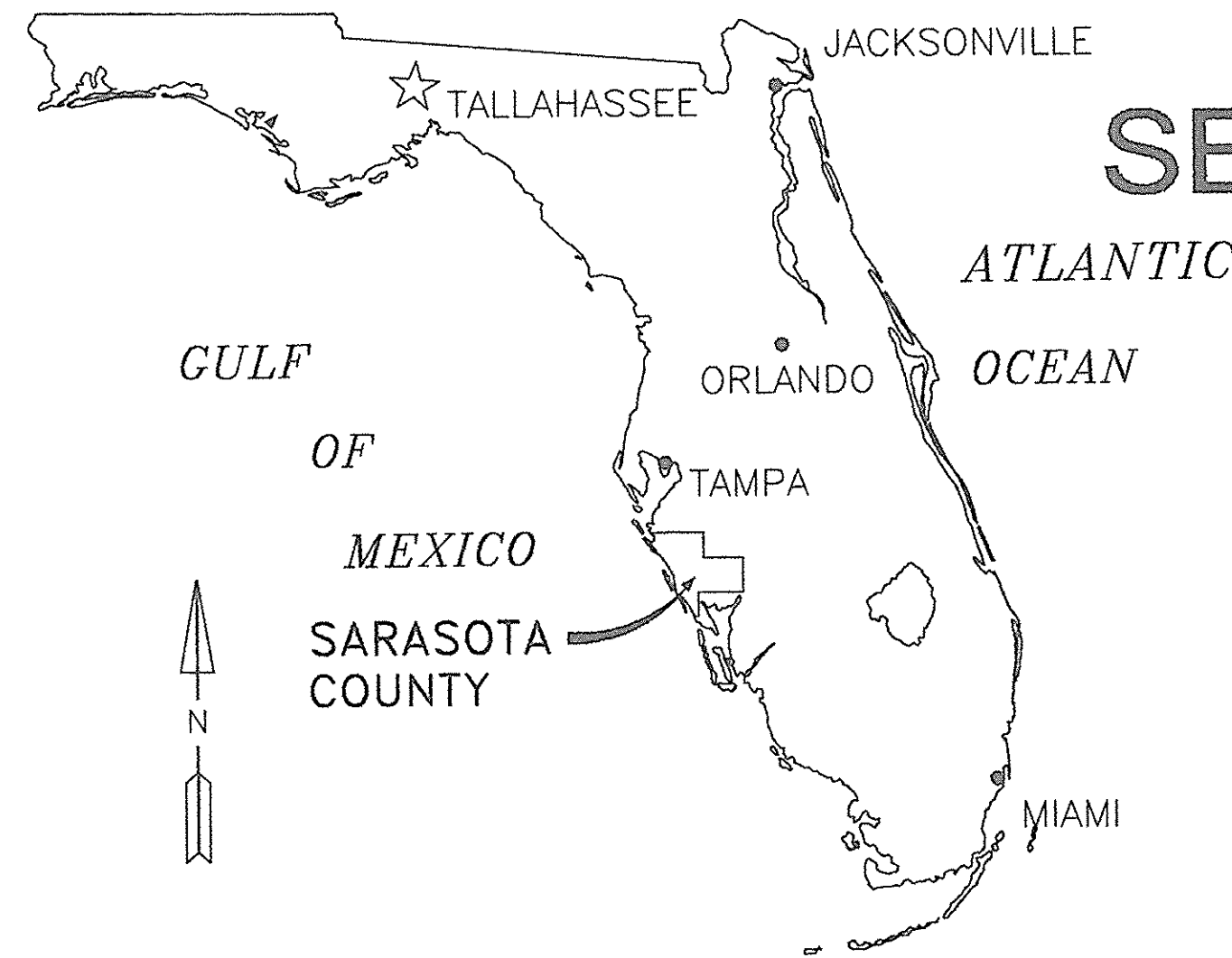
SECTION 35, TOWNSHIP 36S AND SECTION 2, TOWNSHIP 37S
RANGE 17 EAST

CITY OF SARASOTA, SARASOTA COUNTY, FLORIDA

TOTAL LENGTH = 0.75 MILES

PREPARED BY
COASTAL PLANNING & ENGINEERING, INC.
2481 N.W. Boca Raton Blvd., Boca Raton, Fl. 33431
(561) 391-8102

CERTIFICATE OF ACCEPTANCE AND RECORDING
OF COUNTY CLERK :
ACCEPTED FOR FILES AND RECORDED IN THE
PUBLIC RECORDS OF SARASOTA COUNTY, FLORIDA,
THIS DAY OF 20, IN SARASOTA
COUNTY PLAT BOOK PAGES
PURSUANT TO THE PROVISIONS OF CHAPTER
161.161, FLORIDA STATUTES.
KAREN E. RUSHING, CLERK OF COURT
SARASOTA COUNTY, FLORIDA



LEGEND :

- - MEAN HIGH WATER SURVEY POINT
- ▣ - FOUND DEP RANGE MONUMENT
- △ - FOUND DEP SECOND ORDER STATION
- - MEAN HIGH WATER LINE AND PROPOSED ECL
- - - SURVEY TIE LINE

ABBREVIATIONS :

CPE	COASTAL PLANNING & ENGINEERING, INC.
DEP	FLORIDA DEPARTMENT OF ENVIRONMENTAL PROTECTION
CM	CONCRETE MONUMENT
ECL	EROSION CONTROL LINE
NGVD	NATIONAL GEODETIC VERTICAL DATUM, 1929
FND	FOUND
EL	ELEVATION
NTS	NOT TO SCALE
N	NORTHING
E	EASTING

NOTES :

- COORDINATES AND BEARINGS SHOWN HEREON ARE BASED ON NORTH AMERICAN DATUM, 1983/90 HGPN, FLORIDA STATE PLANE COORDINATE SYSTEM, WEST ZONE, MERCATOR PROJECTION.
- THIS DOCUMENT IS RECORDED IN THE PUBLIC REPOSITORY OF THE FLORIDA DEPT. OF NATURAL RESOURCES, MEAN HIGH WATER SURVEY FILE NO. 2191.
- THIS SURVEY IS NOT VALID UNLESS SEALED WITH AN EMBOSSED SURVEYOR'S SEAL.
- THE M.H.W.L., AS SURVEYED ON NOV. 8-9, 1999, AND THE EROSION CONTROL LINE ARE ONE AND THE SAME.
- THE E.C.L. COMMENCES AT THE MEAN HIGH WATER LINE NEAR DNR RANGE MONUMENT R-40 AND CONTINUES ALONG THE M.H.W.L. NORTHWESTERLY AND TERMINATES AT THE MEAN HIGH WATER LINE NEAR DNR RANGE MONUMENT R-44.
- LANDS SHOWN HEREON WERE NOT ABSTRACTED FOR EASEMENTS, OWNERSHIP, OR RIGHTS-OF-WAY.
- 6a. PROPERTY OWNERSHIP DETERMINED VIA SEARCH (DECEMBER 1999) OF SARASOTA COUNTY MAP RECORDS.
- 6b. PROPERTY LINES ARE SCALE ACCURATE (NOT FIELD LOCATED).
- 6c. SECTION, TOWNSHIP, AND RANGE LINES, IF ANY, ARE SCALE ACCURATE (NOT FIELD LOCATED).
- THE ELEVATION OF THE E.C.L. (1.35' NGVD 1929) WAS BASED ON EXTENSION OF TIDAL DATUM FROM FDEP MEAN HIGH WATER SURVEY FILE NO. 2038.
- ALL ELEVATIONS SHOWN HEREON ARE BASED ON THE NATIONAL GEODETIC VERTICAL DATUM, 1929.
- THE TOTAL LENGTH OF EROSION CONTROL LINE IS 3956.71 FT. OR 0.75 MILES
- DATE OF AERIAL PHOTOGRAPHY : MARCH 24, 1999.

APPROVALS :

CERTIFICATE OF APPROVAL OF BOARD OF COUNTY COMMISSIONERS

THIS EROSION CONTROL LINE PLAT WAS APPROVED BY THE BOARD OF COUNTY COMMISSIONERS OF SARASOTA COUNTY, FLORIDA AT ITS MEETING ON 20, PURSUANT TO THE PROVISIONS OF CHAPTER 161.161, FLORIDA STATUTES.

ATTEST
CLERK OF THE CIRCUIT COURT

BY: _____
DEPUTY CLERK

SHANNON H. STAUB
SARASOTA COUNTY COMMISSION

STATE OF FLORIDA
DEPARTMENT OF ENVIRONMENTAL PROTECTION

KNOW ALL PERSONS BY THESE PRESENTS: THAT THE CHIEF OF THE BUREAU OF SURVEY AND MAPPING OF THE DIVISION OF STATE LANDS, DEPARTMENT OF ENVIRONMENTAL PROTECTION OF THE STATE OF FLORIDA HEREBY APPROVES THIS PLAT.

ON THIS _____ DAY OF _____ 20 ____.

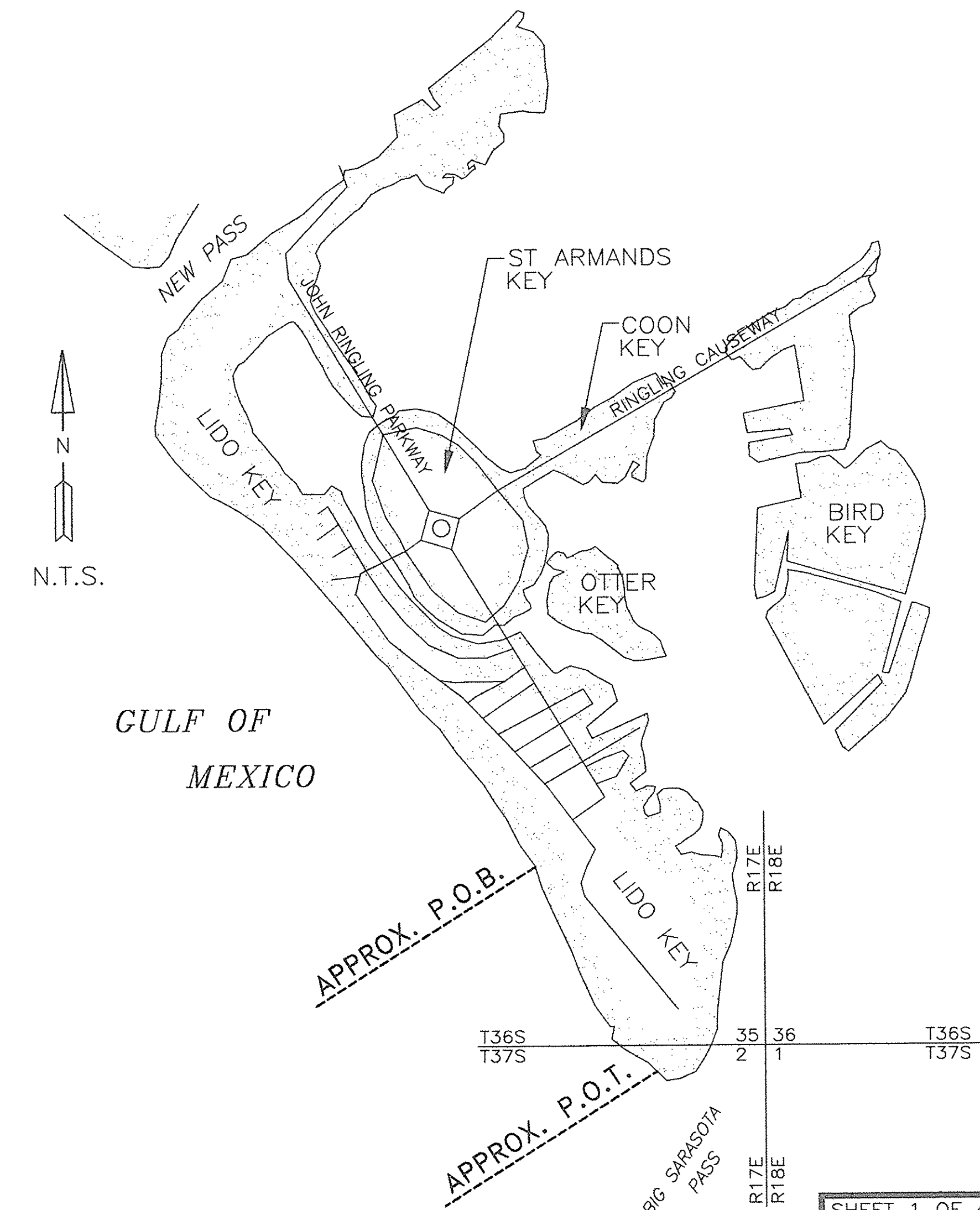
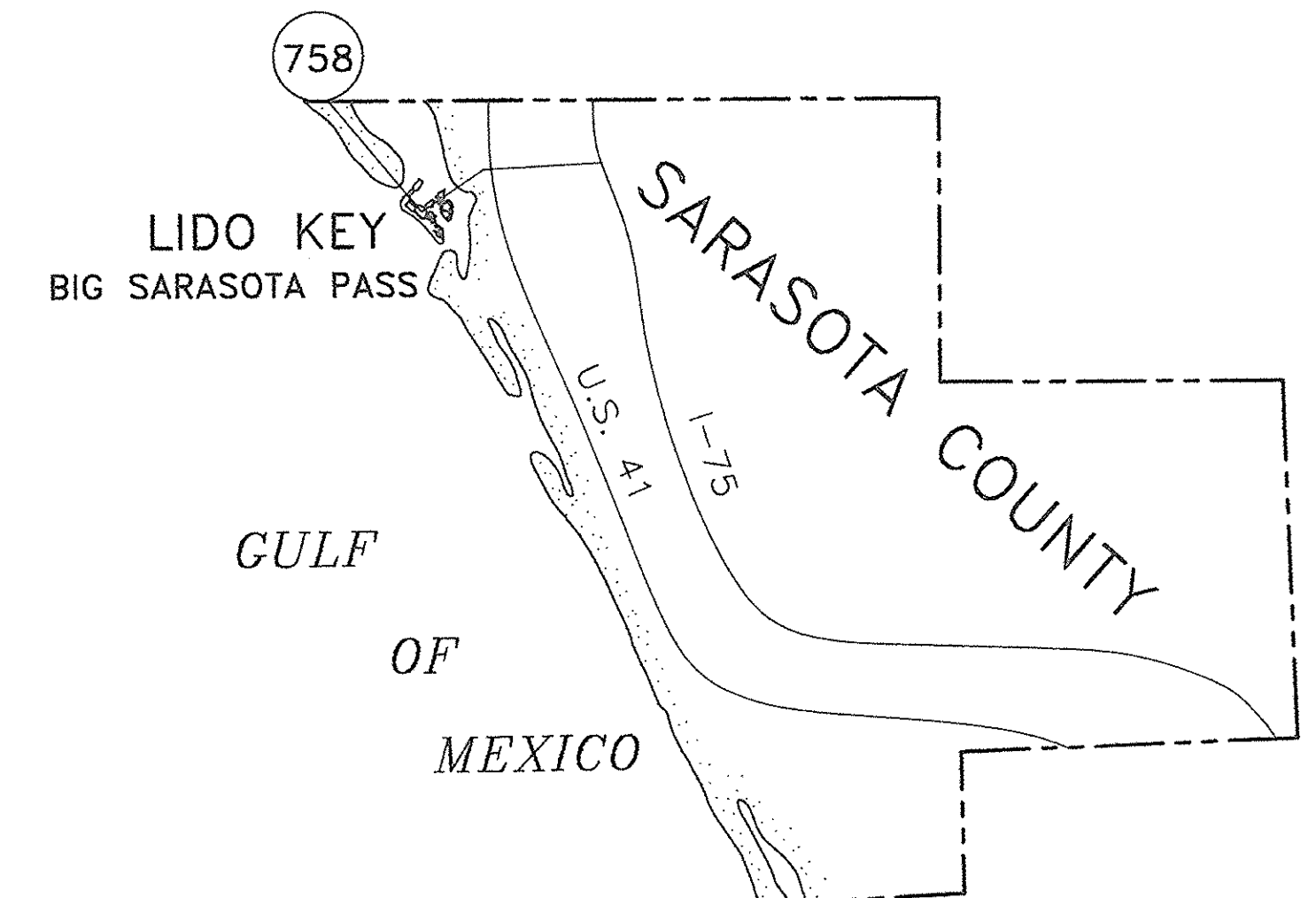
TERRY E. WILKINSON, CHIEF
BUREAU OF SURVEY AND MAPPING

CERTIFICATION :

I HEREBY CERTIFY THAT THE ATTACHED MEAN HIGH WATER LINE/EROSION CONTROL LINE SURVEY IS AN ACCURATE REPRESENTATION OF SAID LINE AS RECENTLY SURVEYED UNDER MY PERSONAL DIRECTION ON NOV. 8 & 9 1999, AND IS TRUE AND CORRECT TO THE BEST OF MY KNOWLEDGE AND BELIEF AND MEETS THE MINIMUM TECHNICAL STANDARDS SET FORTH IN CHAPTER 61G17-6 ADOPTED BY THE FLORIDA BOARD OF LAND SURVEYORS PURSUANT TO SECTION 472.027 OF THE FLORIDA STATUTES AND THE MEAN HIGH WATER SURVEY DEPICTED HEREON COMPLIES WITH CHAPTER 177, PART II OF THE FLORIDA STATUTES, AND IS RECORDED IN THE PUBLIC REPOSITORY OF THE FLORIDA DEPARTMENT OF ENVIRONMENTAL PROTECTION MEAN HIGH WATER SURVEY FILE NUMBER 2191.

EARL SOEDER, P.S.M.
FLORIDA REGISTERED SURVEYOR #5865

5/4/00
DATE



DESCRIPTION OF MEAN HIGH WATER LINE SURVEY AND
PROPOSED EROSION CONTROL LINE
SOUTH LIDO KEY

A LINE IN SECTION 35, TOWNSHIP 36S AND SECTION 2, TOWNSHIP 37S, RANGE 17 EAST, SARASOTA COUNTY FLORIDA, BEING MORE PARTICULARLY DESCRIBED AS FOLLOWS:

COMMENCING AT THE FLORIDA DEPARTMENT OF ENVIRONMENTAL PROTECTION (DEP) SECOND ORDER STATION 17-84-A21, HAVING FOR ITS COORDINATES N 1080456.523, E 470583.947 IN THE FLORIDA STATE PLANE COORDINATE SYSTEM, NORTH ZONE (NORTH AMERICAN DATUM, 1983/90); THENCE ON A GRID BEARING, NORTH 62 DEGREES 58 MINUTES 33 SECONDS WEST, A DISTANCE OF 815.69 FEET TO A POINT ON THE MEAN HIGH WATER LINE, EL. = 1.35' (NATIONAL GEODETIC VERTICAL DATUM 1929) AS LOCATED NOVEMBER 8 THRU NOVEMBER 9, 1999, SAID POINT BEING THE POINT OF BEGINNING, SAID POINT ALSO BEING THE SOUTH PROJECT LIMIT LINE OF THE LIDO KEY BEACH EROSION CONTROL LINE DATED AUGUST 18, 1993 (SEE FDEP MEAN HIGH WATER SURVEY FILE NO. 1989); THENCE ALONG SAID MEAN HIGH WATER LINE THE FOLLOWING COURSES:

SOUTH 27 DEGREES 05 MINUTES 42 SECONDS EAST, A DISTANCE OF 87.27' FEET TO A POINT;
THENCE SOUTH 30 DEGREES 43 MINUTES 36 SECONDS EAST, A DISTANCE OF 95.66 FEET TO A POINT;
THENCE SOUTH 25 DEGREES 24 MINUTES 26 SECONDS EAST, A DISTANCE OF 99.72 FEET TO A POINT;
THENCE SOUTH 32 DEGREES 35 MINUTES 20 SECONDS EAST, A DISTANCE OF 136.28 FEET TO A POINT;
THENCE SOUTH 28 DEGREES 03 MINUTES 34 SECONDS EAST, A DISTANCE OF 165.51 FEET TO A POINT;
THENCE SOUTH 31 DEGREES 22 MINUTES 40 SECONDS EAST, A DISTANCE OF 137.72 FEET TO A POINT;
THENCE SOUTH 30 DEGREES 09 MINUTES 32 SECONDS EAST, A DISTANCE OF 176.13 FEET TO A POINT, SAID POINT BEING REFERENCED BY FIELD TIE OF NORTH 82 DEGREES 59 MINUTES 45 SECONDS WEST A DISTANCE OF 177.21 FEET TO FDEP R-41 CM;
THENCE SOUTH 29 DEGREES 49 MINUTES 54 SECONDS EAST, A DISTANCE OT 215.25 FEET TO A POINT;
THENCE SOUTH 28 DEGREES 33 MINUTES 54 SECONDS EAST, A DISTANCE OF 114.50 FEET TO A POINT;
THENCE SOUTH 28 DEGREES 15 MINUTES 56 SECONDS EAST, A DISTANCE OF 120.51 FEET TO A POINT;
THENCE SOUTH 31 DEGREES 16 MINUTES 18 SECONDS EAST, A DISTANCE OF 182.02 FEET TO A POINT;
THENCE SOUTH 32 DEGREES 22 MINUTES 21 SECONDS EAST, A DISTANCE OF 183.94 FEET TO A POINT;
THENCE SOUTH 23 DEGREES 54 MINUTES 21 SECONDS EAST, A DISTANCE OF 269.78 FEET TO A POINT, SAID POINT BEING REFERENCED BY FIELD TIE OF SOUTH 36 DEGREES 12 MINUTES 14 SECONDS WEST A DISTANCE OF 113.89 FEET TO FDEP R-42 CM;
THENCE SOUTH 22 DEGREES 25 MINUTES 45 SECONDS EAST, A DISTANCE OF 302.63 FEET TO A POINT;
THENCE SOUTH 50 DEGREES 34 MINUTES 17 SECONDS WEST, A DISTANCE OF 19.35 FEET TO A POINT;
THENCE SOUTH 27 DEGREES 26 MINUTES 04 SECONDS EAST, A DISTANCE OF 66.60' FEET TO A POINT;
THENCE SOUTH 48 DEGREES 10 MINUTES 22 SECONDS WEST, A DISTANCE OF 7.95 FEET TO A POINT;
THENCE SOUTH 38 DEGREES 35 MINUTES 07 SECONDS EAST, A DISTANCE OF 68.72' FEET TO A POINT;
THENCE NORTH 53 DEGREES 52 MINUTES 31 SECONDS EAST, A DISTANCE OF 8.01 FEET TO A POINT;
THENCE SOUTH 42 DEGREES 24 MINUTES 24 SECONDS EAST, A DISTANCE OF 4.17 FEET TO A POINT;
THENCE SOUTH 50 DEGREES 00 MINUTES 20 SECONDS EAST, A DISTANCE OF 62.10 FEET TO A POINT;
THENCE NORTH 51 DEGREES 17 MINUTES 25 SECONDS EAST, A DISTANCE OF 40.67 FEET TO A POINT;
THENCE SOUTH 23 DEGREES 44 MINUTES 08 SECONDS EAST, A DISTANCE OF 121.60 FEET TO A POINT;
THENCE SOUTH 16 DEGREES 11 MINUTES 30 SECONDS EAST, A DISTANCE OF 179.94 FEET TO A POINT;
THENCE SOUTH 45 DEGREES 10 MINUTES 26 SECONDS WEST, A DISTANCE OF 29.44 FEET TO A POINT;
THENCE SOUTH 49 DEGREES 55 MINUTES 42 SECONDS EAST, A DISTANCE OF 12.77 FEET TO A POINT;
THENCE SOUTH 68 DEGREES 07 MINUTES 23 SECONDS EAST, A DISTANCE OF 49.03 FEET TO A POINT;
THENCE SOUTH 38 DEGREES 27 MINUTES 30 SECONDS EAST, A DISTANCE OF 49.02 FEET TO A POINT;
THENCE SOUTH 58 DEGREES 52 MINUTES 40 SECONDS WEST, A DISTANCE OF 4.95 FEET TO A POINT;
THENCE SOUTH 37 DEGREES 06 MINUTES 20 SECONDS EAST, A DISTANCE OF 10.48 FEET TO A POINT;
THENCE NORTH 52 DEGREES 31 MINUTES 48 SECONDS EAST, A DISTANCE OF 75.79 FEET TO A POINT;
THENCE SOUTH 30 DEGREES 19 MINUTES 33 SECONDS EAST, A DISTANCE OF 48.21 FEET TO A POINT;
THENCE SOUTH 48 DEGREES 12 MINUTES 37 SECONDS EAST, A DISTANCE OF 52.84 FEET TO A POINT, SAID POINT BEING REFERENCED BY FIELD TIE OF SOUTH 42 DEGREES 4 MINUTES 6 SECONDS WEST A DISTANCE OF 114.89 FEET TO FDEP R-43 CM;

THENCE NORTH 68 DEGREES 18 MINUTES 59 SECONDS EAST, A DISTANCE OF 64.12 FEET TO A POINT;
THENCE SOUTH 54 DEGREES 42 MINUTES 44 SECONDS EAST, A DISTANCE OF 59.53 FEET TO A POINT;
THENCE SOUTH 66 DEGREES 43 MINUTES 34 SECONDS EAST, A DISTANCE OF 27.55 FEET TO A POINT;
THENCE NORTH 74 DEGREES 11 MINUTES 23 SECONDS EAST, A DISTANCE OF 39.95 FEET TO A POINT;
THENCE NORTH 66 DEGREES 30 MINUTES 44 SECONDS EAST, A DISTANCE OF 77.90 FEET TO A POINT;
THENCE SOUTH 42 DEGREES 48 MINUTES 05 SECONDS EAST, A DISTANCE OF 63.43 FEET TO A POINT;
THENCE SOUTH 40 DEGREES 58 MINUTES 48 SECONDS EAST, A DISTANCE OF 191.01 FEET TO A POINT;
THENCE SOUTH 34 DEGREES 56 MINUTES 18 SECONDS EAST, A DISTANCE OF 165.74 FEET TO A POINT, SAID POINT BEING REFERENCED BY FIELD TIE OF SOUTH 16 DEGREES 45 MINUTES 32 SECONDS WEST A DISTANCE OF 335.82 FEET TO FDEP R-44 CM;
THENCE SOUTH 47 DEGREES 33 MINUTES 26 SECONDS EAST, A DISTANCE OF 68.92 FEET TO THE POINT OF TERMINUS OF SAID MEAN HIGH WATER LINE, SAID POINT LYING SOUTH 65 DEGREES 35 MINUTES 59 SECONDS WEST, A DISTANCE OF 552.79 FEET FROM COE SECOND ORDER STATION SABE-64, SAID STATION HAVING FOR ITS COORDINATES N 1078136.621 E 472428.993, ACCORDING TO THE ARMY CORPS OF ENGINEERS PUBLISHED COORDINATES, BASED ON THE FLORIDA STATE PLANE COORDINATE SYSTEM, WEST ZONE, NAD 1983/90.

COASTAL PLANNING & ENGINEERING, INC.

JACKSONVILLE
SARASOTA
BOCA RATON
391-8102
(561)

FLORIDA

MEAN HIGH WATER LINE SURVEY AND
PROPOSED EROSION CONTROL LINE
SOUTH LIDO KEY
CITY OF SARASOTA
SARASOTA COUNTY, FLORIDA

PROJECT:

DRAWN BY:

AMB

CHECKED BY:

ES

DATE:

12/02/99

COMM. NO.:

8486.28

SCALE:

NTS

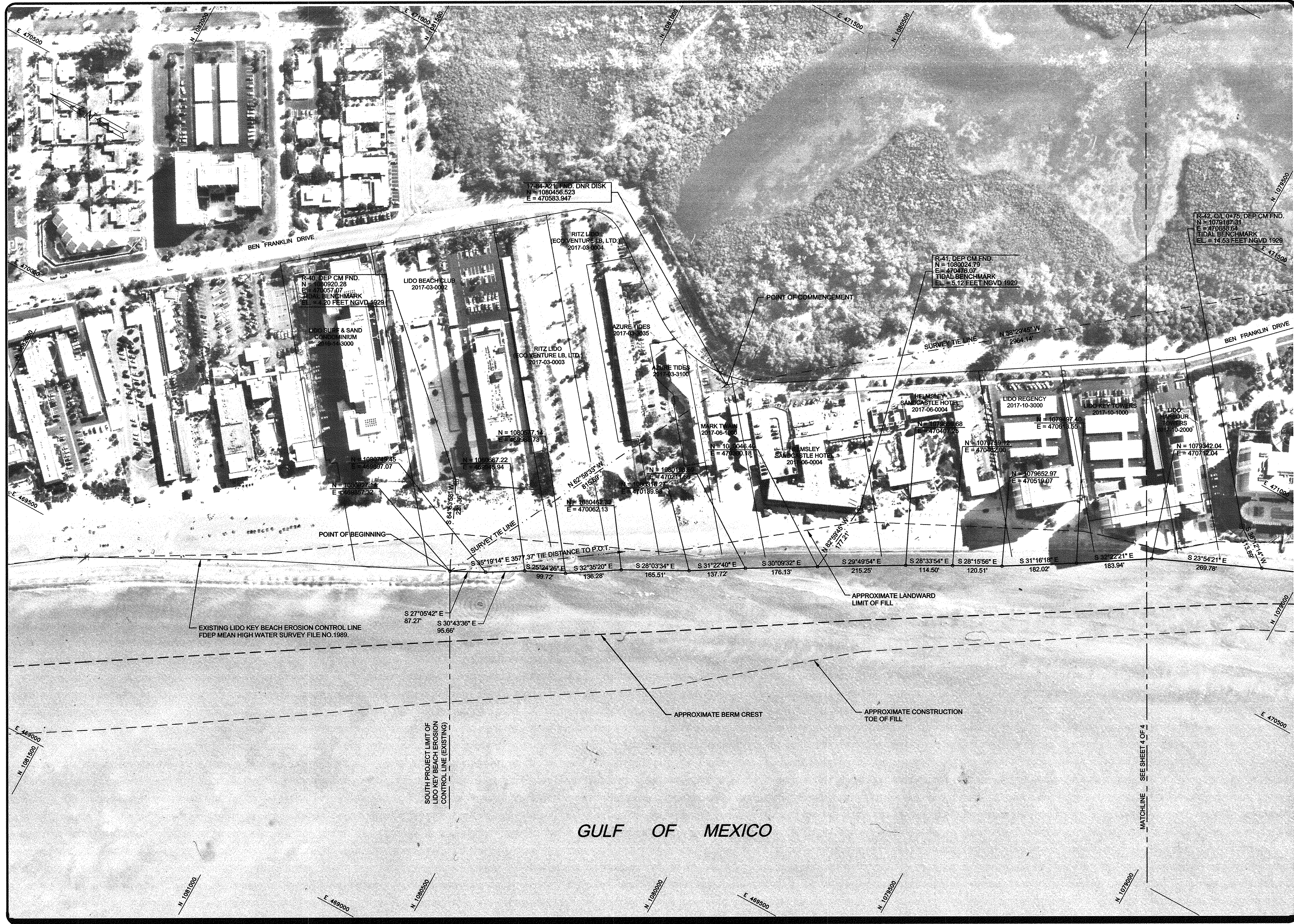
SHEET:

2 OF 4

REVISION DATE:

G:\SARASOTA\LIDO\8486.28\1999-ECL\1999-DES.DWG

2191
(Revised)



COASTAL PLANNING & ENGINEERING, INC.
BOCA RATON, FLORIDA 33433
(561) 391-8102

PROJECT:
MEAN HIGH WATER SURVEY AND
PROPOSED EROSION CONTROL LINE
SOUTH LIDO KEY
CITY OF SARASOTA
SARASOTA COUNTY, FLORIDA

DRAWN BY:
AMB

CHECKED BY:
ES

DATE:
12/02/99

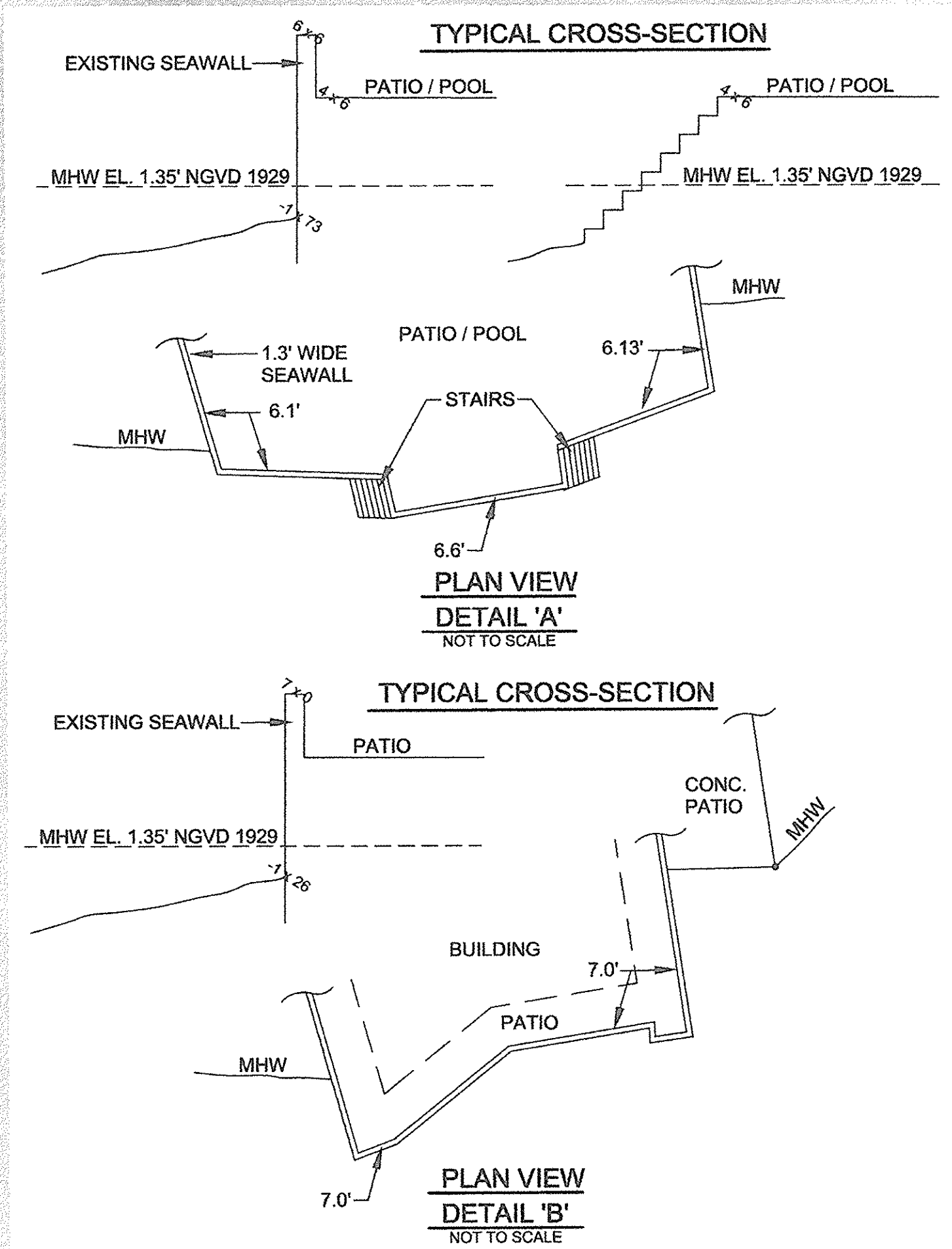
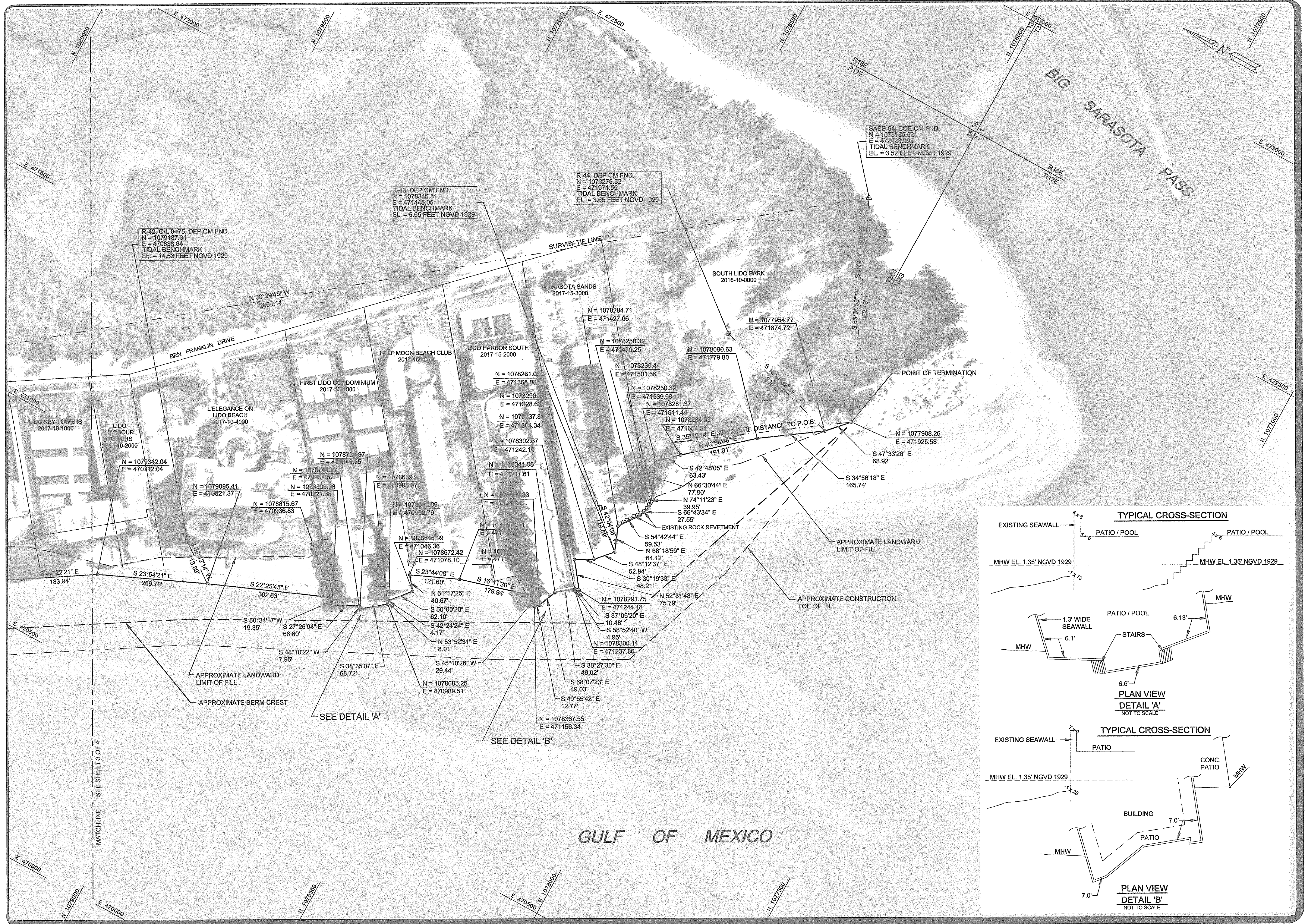
COMM. NO.:
8486.28

SCALE:
1" = 100'

SHEET:
3 OF 4

REVISION DATE:
4/18/00

2191
(Revised)



COASTAL PLANNING & ENGINEERING, INC.
JACKSONVILLE
SARASOTA
BOCA RATON
391-8102
FLORIDA

PROJECT: MEAN HIGH WATER SURVEY AND PROPOSED EROSION CONTROL LINE SOUTH LIDO KEY CITY OF SARASOTA SARASOTA COUNTY, FLORIDA

DRAWN BY: AMB
CHECKED BY: ES
DATE: 12/02/99
COMM. NO.: 8486.28
SCALE: 1" = 100'
SHEET: 4 OF 4

REVISION DATE: 4/18/00