



SARASOTA COUNTY

"Dedicated to Quality Service"

88444
CLT

October 25, 2007

Susan Pelz, PE
Florida Dept of Environmental Protection
Southwest District Office
13051 N. Telcom Parkway
Temple Terrace, FL 33627-0926

Re: Central County Solid Waste Disposal Complex
Permit No. 130542-002-SO/01

Dear Ms. Pelz:

Enclosed are the Topographic Survey and remaining capacity calculations as required by Special Conditions D.2.e.

Should you have any questions, please contact me at (941) 861-1571.

Sincerely,

Frank Coggins
Manager, Solid Waste Operations

cc: [illegible]
[illegible]
[illegible]



a

February 02, 2007

Mr. Nick Marotta
Veolia ES Solid Waste, Inc.
4000 Knights Trail Road
Nokomis, Florida 34275
(941) 486-0085

Re: Volumetric Report
Sarasota County Landfill

Dear Mr. Marotta:

Below are the volumes that LandAir Mapping has computed. The volumetric calculations were derived from a base grade supplied by Waste Management dated 1998, and aerial photography taken December 20, 2006.

The volumes are as follows:


The fill volume of the area is 3,967,074.4 yds³.

The fill volume of the temporary berms and piles is 6,465.2 yds³.

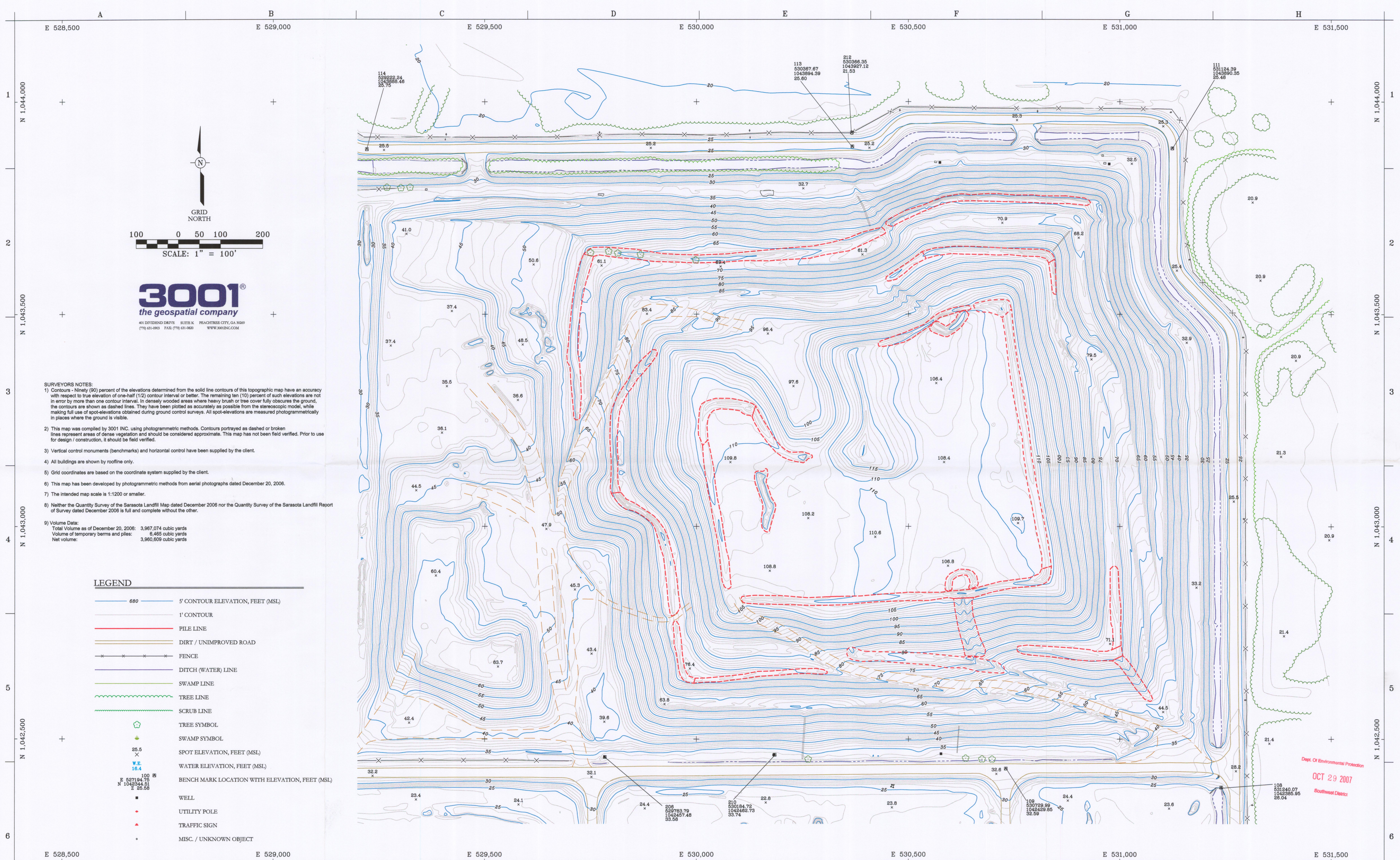
The net fill volume of the area is 3,960,609.2 yds³.

The fill volume of the soil stockpile area is 29,415.4 yds³.

Sincerely,


Major Wilkerson

FEB 20 2007



SURVEYORS NOTES:

1) Contours - Ninety (90) percent of the elevations determined from the solid line contours of this topographic map have an accuracy with respect to true elevation of one-half (1/2) contour interval or better. The remaining ten (10) percent of such elevations are not in error by more than one contour interval. In densely wooded areas where heavy brush or tree cover fully obscures the ground, the contours are shown as dashed lines. They have been plotted as accurately as possible from the stereoscopic model, while making full use of spot-elevations obtained during ground control surveys. All spot-elevations are measured photogrammetrically in places where the ground is visible.

2) This map was compiled by 3001 INC. using photogrammetric methods. Contours portrayed as dashed or broken lines represent areas of dense vegetation and should be considered approximate. This map has not been field verified. Prior to use for design / construction, it should be field verified.

3) Vertical control monuments (benchmarks) and horizontal control have been supplied by the client.

4) All buildings are shown by roofline only.

5) Grid coordinates are based on the coordinate system supplied by the client.

6) This map has been developed by photogrammetric methods from aerial photographs dated December 20, 2006.

7) The intended map scale is 1:1200 or smaller.

8) Neither the Quantity Survey of the Sarasota Landfill Map dated December 2006 nor the Quantity Survey of the Sarasota Landfill Report of Survey dated December 2006 is full and complete without the other.

9) Volume Data:
Total Volume as of December 20, 2006: 3,967,074 cubic yards
Volume of temporary berms and piles: 6,465 cubic yards
Net volume: 3,960,609 cubic yards

LEGEND

- 5' CONTOUR ELEVATION, FEET (MSL)
- 1' CONTOUR
- PILE LINE
- DIRT / UNIMPROVED ROAD
- FENCE
- DITCH (WATER) LINE
- SWAMP LINE
- TREE LINE
- SCRUB LINE
- TREE SYMBOL
- SWAMP SYMBOL
- SPOT ELEVATION, FEET (MSL)
- WATER ELEVATION, FEET (MSL)
- BENCH MARK LOCATION WITH ELEVATION, FEET (MSL)
- WELL
- UTILITY POLE
- TRAFFIC SIGN
- MISC. / UNKNOWN OBJECT

VEOLIA ES SOLID WASTE, INC.
4000 Knights Trail Road
Nokomis, Florida 34275

Revisions

No.	Description	Date	By	No.	Description	Date	By

Approved By: N. MAROTTA
Checked By: M. WILKERSON
Drawn By: D. PUTERBAUGH

Project Location:
SITE TOPOGRAPHIC MAP
NOKOMIS, FL

Quantity Survey of the
SARASOTA LANDFILL

Drawing No. FL-0000-100-TOP-2006
Scale: 1" = 100'
Date: DEC., 2006
Sheet Number:
1 of 1