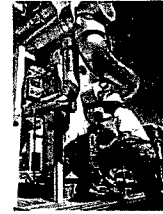


SCS ENGINEERS



**Monthly Construction Progress Reports
Citrus County Central Class I Landfill
Phase 1/1A & 2 Gas Collection and
Control System Construction**

Permit No. 21375-017-SC/08

FLORIDA DEPARTMENT OF
ENVIRONMENTAL PROTECTION
DEC 11 2009
SOUTHWEST DISTRICT
TAMPA

Presented to:

**Florida Department of Environmental
Protection**

13051 N. Telecom Parkway
Temple Terrace, Florida 33637

Presented by:

SCS ENGINEERS

4041 Park Oaks Blvd.

Suite 100

Tampa, Florida 33610

(813) 621-0080

File No. 09207049.04

Offices Nationwide
www.scsengineers.com

SCS ENGINEERS

November 6, 2009
File No. 09207049.04

Ms. Susan J. Pelz, P.E.
Solid Waste Management
Florida Department of Environmental Protection
3051 N. Telecom Parkway
Temple Terrace, Florida 33637-0926

Dept. of Environmental
Protection

NOV 06 2009

Southwest District

Subject: Notification of Pre-construction Meeting
Phase 1/1A & 2 Gas Collection and Control System Construction
Citrus County, Florida
Permit Number 21375-017-SC/08.

Dear Susan:

SCS Engineers (SCS) is submitting this notification on behalf of the Citrus County Solid Waste Management Division (SWMD) to inform the Florida Department of Environmental Protection of the upcoming pre-construction meeting per Permit No. 21375-017-SC/08 Specific Condition Part B.4.

The pre-construction meeting for this project will be held on Friday November 13, 2009 at 10:30AM in the administration building at the Central County landfill located at 230 West Gulf To Lake Highway, Lecanto, FL 34461

Please feel free to contact SCS at 813-621-0080 or Casey Stephens of SWMD at 352-527-7670 should you have any questions or require additional information.

Sincerely,

Very truly yours,



Daniel R. Cooper, P.E.
Project Manager
SCS ENGINEERS



Raymond J. Dever, P.E., BCEE
Vice President
SCS ENGINEERS

cc: Casey Stephens, Director, Citrus County Solid Waste Management Division



SCS ENGINEERS

November 20, 2009
File No. 09207049.04

**Dept. of Environmental
Protection**

• NOV 20 2009

Ms. Susan J. Pelz, P.E.
Solid Waste Management
Florida Department of Environmental Protection
3051 N. Telecom Parkway
Temple Terrace, Florida 33637-0926

Southwest District

Subject: Pre-construction Meeting Minutes
Phase 1/1A & 2 Gas Collection and Control System Construction
Citrus County, Florida
Permit Number 21375-017-SC/08.

Dear Susan:

SCS Engineers (SCS) is submitting the meeting minutes for the Pre-Construction meeting on behalf of the Citrus County Solid Waste Management Division (SWMD) per Permit No. 21375-017-SC/08 Specific Condition Part B.4.

The pre-construction meeting for this project was held on Friday November 13, 2009 at 10:30AM in the administration building at the Central County landfill located at 230 West Gulf To Lake Highway, Lecanto, FL 34461

Please feel free to contact SCS at 813-621-0080 or Casey Stephens of SWMD at 352-527-7670 should you have any questions or require additional information.

Sincerely,



Daniel R. Cooper, P.E.
Project Manager
SCS ENGINEERS



C. Ed Hilton, P.E.
Vice President
SCS ENGINEERS

cc: Casey Stephens, Director, Citrus County Solid Waste Management Division

Citrus County 7-Acre Closed Area Re-Closure and Landfill System Construction
Pre-Construction Meeting Minutes
Project No. 070-09
November 13, 2009 10:30 AM
09207049.04

Attendees: (Sign in sheet attached)

Glenn McCracken, Citrus County
Casey Stephens, Citrus County
Carmen Bruno, Citrus County
Mark Murlowski, Belair Builders
Gary Silbernagel, Belair Builders
Jeff Winiecki, Belair Builders
Daniel Cooper, SCS Engineers
Dominique Bramlett, SCS Engineers
Jim Burzenski, SCS Engineers
Chris Brown, Welbro
Lauren Greenfield, FDEP (Via conference call)

The meeting was held at the Citrus County Central Landfill in the conference room. The attendees were introduced to one another.

The agenda Distributed by Citrus County was followed. (See attached)

- I. Introductions were made for all people in attendance and what their roles would be in the project.
- II. Lines of Communications - It was established that Casey Stephens would be the project manager and point of contact for Citrus County with Carmen Bruno as his back up. Dan Cooper would be the point of contact for SCS with Dominique Bramlett as his back up. Mark Murlowski will be the office point for Belair concerning contract issues and Gary Silbernagel will be the operations point of contact and will be on site throughout the construction.
- III. Submittals- All of the submittals listed on the agenda were discussed and were delivered to SCS for review by Belair at the meeting. Belair inquired about the required permits. SCS will deliver all of the environmental and solid waste permits to Belair. Belair will obtain the required building and/or electrical permits from Citrus County. They have a meeting with the County building department set up.
- IV. Project Schedule
The project and contract schedule were discussed. The County will issue the Notice to proceed for November 23, 2009. Belair has provided base schedule as part of contract and this schedule will be updated as changes occur throughout the project.
The working hours were discussed as well as Saturday work; Belair may work on Saturdays but will not plan on hauling soil across the site on these days.

- V. Progress Meetings- The time and location of the weekly progress meeting was established for the remainder of the project. Meetings will be held on Thursday mornings at 10:30 AM in the conference room at the landfill. The first routine meeting is scheduled for December 3, 2009.
- VI. Coordination with On-going Landfill activities or other contractor- During drilling Belair will be hauling waste to the working face. Drillings from the 7-Acre cell will be weighed and relocated to the open face, while drillings from the Phase 1/1A & 2 cells will simply be relocated to the working face. The last load of waste must be deliver to working face by 4:30 PM.
- VII. Use of Premises- Each agenda item was discussed and outcomes are itemized below.
- Storage sites – Belair is planning on storing material on Southern end of 7-acre cell and near the western access gate by the recycling containers.
 - Site Access/Security- Belair will place a lock on the western gate in a daisy chain fashion so both they and the sheriff's department will have individual access.
 - Stock pile area review- Citrus will direct Belair where exactly the excess soil will be placed once excavation activities begin.
 - Temporary Facilities/Utilities- Citrus indicted where the temporary utilities are located and Belair will coordinate directly with utilities.
 - Safety and First Aid Procedure- This is part of Belair's Health and Safety Plan, a tailgate safety meeting will be held daily.
 - Signage- Post of Sign- County has not yet decided on signage. They will inform Belair once a decision has been made.
 - Litter control/Facility Permit review- Belair will be watering the road during earth moving as needed and will review permits to assure compliance with site permits.
- VIII. Procedures review- SCS went through the procedure for submitting shop drawings applications for payment, change orders and requests for information.
- IX. Contractors Issues – Belair inquired as to where the power for the flare was to be extended from. Belair will coordinate with local utility and bring County into review the plan once established.
- X. County Issues- No issues at this time.
- XI. Engineers Issues – SCS mentioned that the tie-in to the existing liner is critical item and caution should be observed when locating and performing all work near existing liner.
- XII. Other Business – SCS will provide a laminated contact's card for the project to all parties.

PRE-CONSTRUCTION MEETING

CITRUS COUNTY LANDFILL

7-ACRE CLOSED AREA RE-CLOSURE AND LANDFILL GAS SYSTEM
CONSTRUCTION PROJECT NO. 070-09

CONFERENCE AGENDA

- I. Introduction
 - a) County Staff
 - b) SCS Engineers Staff
 - c) Belair Construction Staff
- II. Lines of Communications
- III. Submittals
 - a) Shop Drawing submittals schedule
 - b) Excavation Plan
 - c) Erosion and Pollution Control Plan
 - d) Quality Control Plan
 - e) Maintenance of Traffic Plan
 - f) Health and Safety Plan
 - g) Documentation of Health and Safety Officer
 - h) Schedule of Values (review County's Payment Schedule/forms)
 - i) Subcontractor List
 - j) List of Licenses/permit required
- IV. Project Schedule
 - a) To be submitted monthly showing current progress and delays
 - b) Critical path items to be addressed
- V. Progress Meetings
- VI. Coordination with On-going Landfill activities or other contractors
- VII. Use of Premises
 - a) Storage sites
 - b) Site Access/Security
 - c) Stock pile area review
 - d) Temporary Facilities/Utilities
 - e) Safety and First Aid Procedure
 - f) Signage- Post of Sign
 - g) Litter control/Facility Permit review

VIII. Procedures review

- a) Shop Drawings
- b) Applications for Payment
- c) Change Orders
- d) Request for Information

IX. Contractors Issues

X. County Issues

XI. Engineers Issues

XII. Other Business

Sign-In Sheet

**7-ACRE CLOSED AREA RE-CLOSURE AND LANDFILL GAS SYSTEM
CONSTRUCTION PROJECT NO. 070-09**

[illegible]

SCS ENGINEERS

December 10, 2009
File No. 09207049.04

Ms. Susan J. Pelz, P.E.
Solid Waste Management
Florida Department of Environmental Protection
13051 N. Telecom Parkway
Temple Terrace, Florida 33637-0926

Dept. of Environmental Protection
DEC 11 2009
Southwest District

Subject: Monthly Summary of Construction – November 2009
Citrus County Central Class I Landfill Phase 1/1A & 2 Gas Collection and
Control System Construction
Citrus County, Florida
Permit No. 21375-017-SC/08

Dear Susan:

On behalf of the Citrus County Solid Waste Management Division (SWMD), SCS Engineers (SCS) is submitting the first monthly progress report for the Phase 1/1A & 2 Gas Collection and Control System Construction Project as required under Specific Condition Part B, Item 5.b. of construction permit no. 21375-017-SC/08. As required by the permit conditions, the monthly progress report includes the following:


1. A narrative explaining the status and any delays of major stages in the construction.
2. A summary of submittals and change order requests.
3. Weekly progress meeting summaries.
4. Color copies of photographs which are representative of the typical construction activities for the reporting period, and photographs which show overall views and details of major stages of construction.

Please call us if you have any questions.

Sincerely,



Daniel R. Cooper, P.E.
Project Manager
SCS ENGINEERS


for C. Ed Hilton, P.E.
Vice President
SCS ENGINEERS

cc: Casey Stephens, SWMD

Enclosure



SCS ENGINEERS

December 9, 2009
File No. 09207049.04

**Phase 1/1A & 2 Gas Collection and Control System Construction
BID No. 070-09, Permit No. 21375-017-SC/08
Monthly Progress Report No. 1 (November 2009)**

On behalf of the Citrus County Solid Waste Management Division (SWMD), SCS Engineers (SCS) has prepared the following monthly summary of the construction activities conducted for the above referenced project from November 1, 2009 through November 30, 2009.

PROJECT OVERVIEW

Work in November included the following:

- Pre-construction meeting between SWMD, SCS and contractor
- Installation of all temporary erosion control measures
- Pre conditions site survey work.

PROJECT SCHEDULE

The Contractor's most current construction schedule is provided in Attachment A.

SUMMARY OF SUBMITTALS/CHANGE ORDERS

The summary list of submittals reviewed to-date by SCS for the project is provided in Attachment B.

CONSTRUCTION PROGRESS MEETING SUMMARY REPORTS

Attachment C contains the summary of the progress meetings that were held during the month of November.

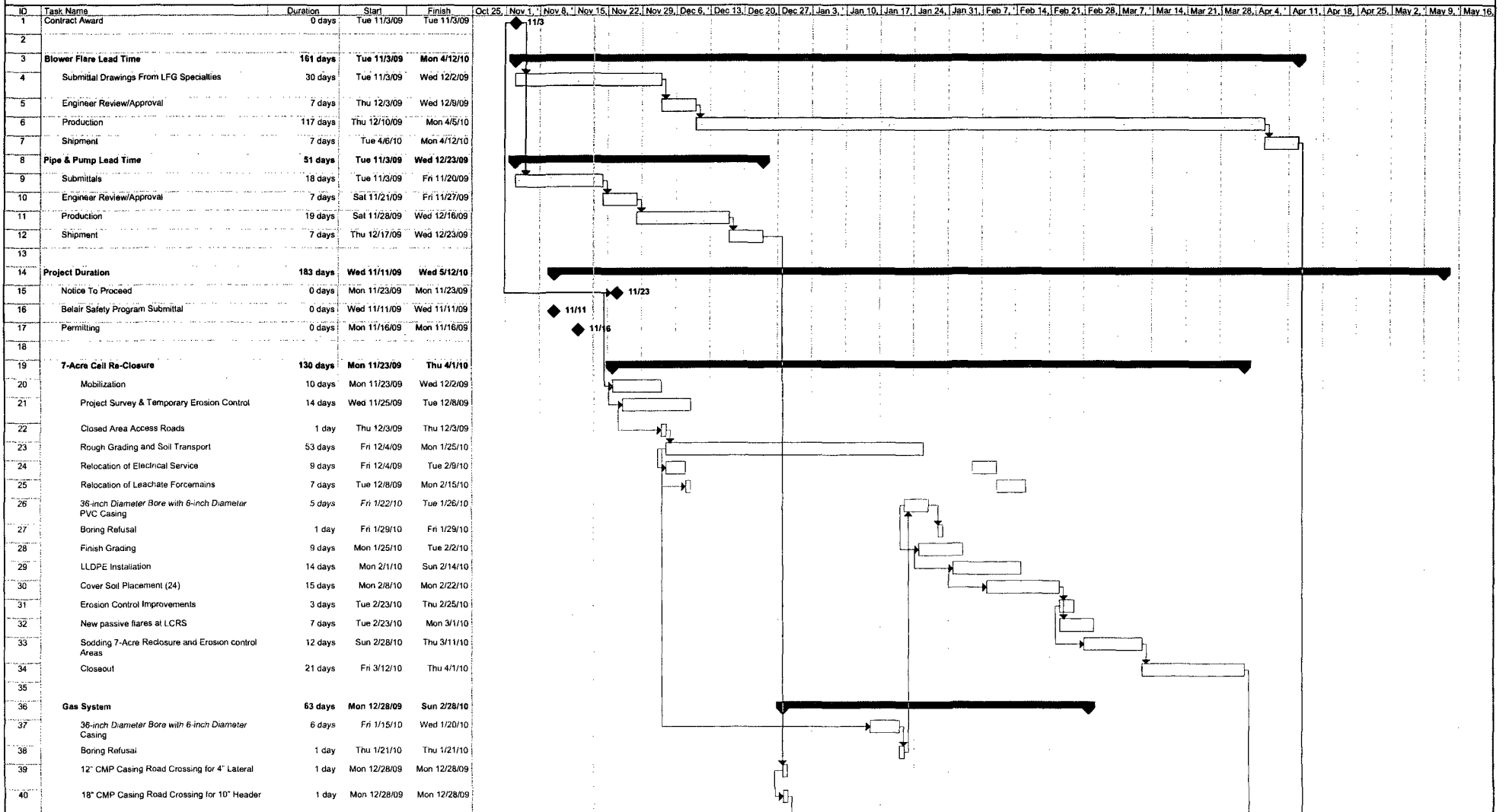
CONSTRUCTION PHOTOGRAPHS

Attachment D includes photographs that are representative of typical construction activities during the month of November.

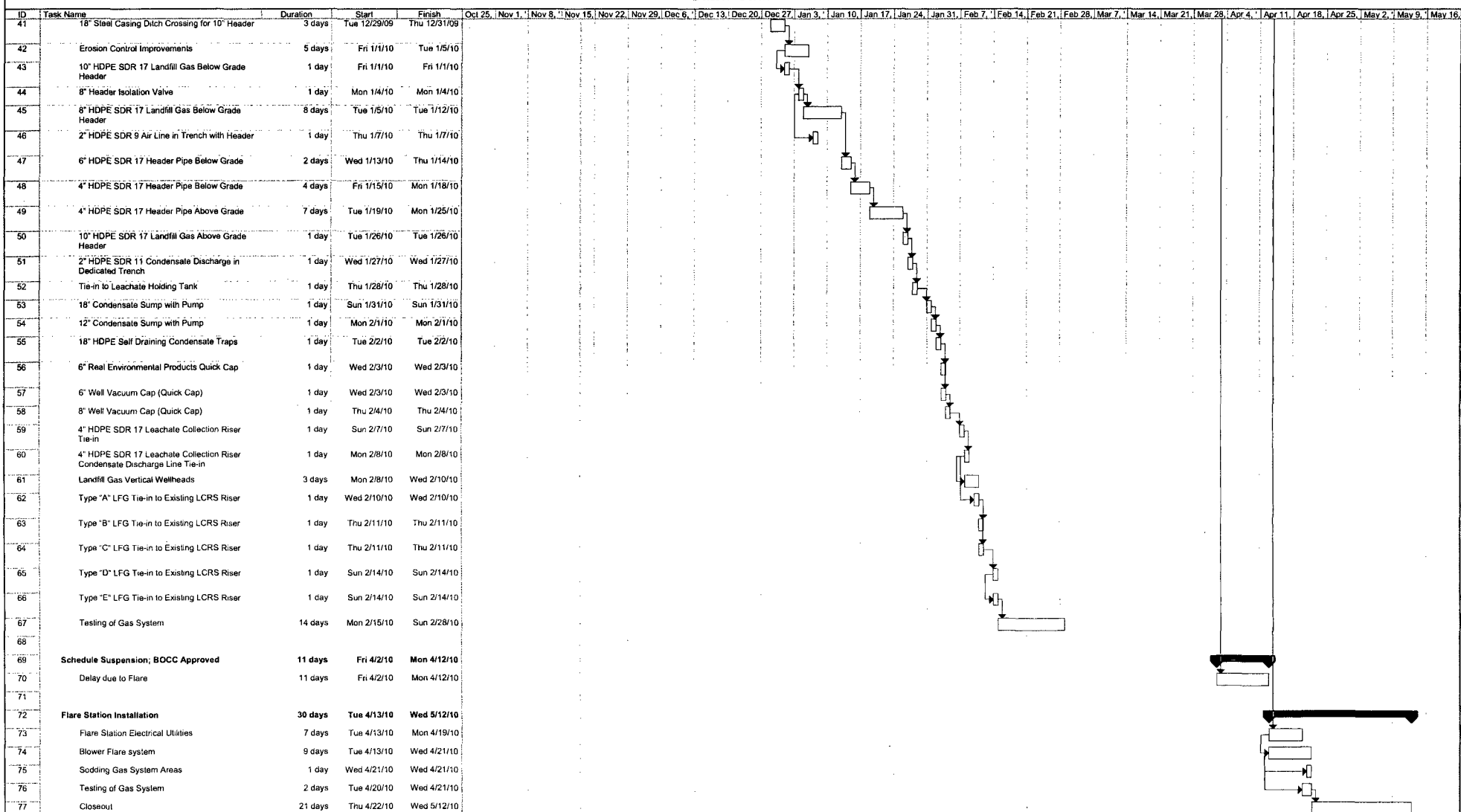


ATTACHMENT A
CONTRACTOR'S SCHEDULE

Citrus County 7-Acre Closed Area Re-Closure & Landfill Gas System Installation Gantt Chart



Citrus County 7-Acre Closed Area Re-Closure & Landfill Gas System Installation Gantt Chart



ATTACHMENT B
SUMMARY OF SUBMITTALS REVIEWED

7-ACRE RE-CLOSURE SUBMITTAL TRACKING LOG

Submittal No.	PRODUCT	Sub-Contractor/ PartSupplier	Actual Submitted Date	Approved Date	Rejected Date	Make Corrections	Resubmitted Date	REMARKS
013010-1	Shop Drawing Submittal Log	Belair Excavating	11/17/2009	11/18/2009				
013010-2	Excavation Plan	Belair Excavating	11/17/2009	11/18/2009				
013010-3	Erosion and Pollution Control Plan	Belair Excavating	11/17/2009	11/18/2009				
013010-4	Quality Control Plan	Belair Excavating	11/17/2009	11/18/2009				
013010-5	Maintenance of Traffic Plan	Belair Excavating	11/17/2009	11/18/2009				
013010-6	Health and Safety Plan	Belair Excavating	11/17/2009	11/18/2009		11/30/2009	12/3/2009	Belair Excavating provided additional information per original submittal comments on 12/3/09 that were incorporated into original
013010-7	Documentation of training of Health and Safety Office	Belair Excavating	11/17/2009	11/18/2009				
013010-8	List of Permits and Belair Licenses	Belair Excavating	11/17/2009	11/18/2009				
013010-9	Application of Payment Documents & Schedule of	Belair Excavating	11/17/2009	11/18/2009				
013010-10	Subcontractors List	Belair Excavating	11/17/2009	11/18/2009				
013010-11	Topographic Map	Belair Excavating	11/25/2009	11/30/2009				
013011-1	Gannt Chart Schedule	Belair Excavation	11/19/2009	12/2/2009				
015055-1	Site Conditions survey-Precon	Belair Excavation sub- BBLS	12/3/2009	12/7/2009				Signed and sealed version
335110-1	Pipe and Pipe Fittings	Ferguson Enterprises	11/30/2009					Additional information requested 12/7/09
444260-1	Condensate Pump	QED	12/1/2009	12/7/2009				

ATTACHMENT C

CONSTRUCTION PROGRESS MEETING SUMMARY REPORTS

Citrus County 7-Acre Closed Area Re-Closure and Landfill System Construction
Pre-Construction Meeting Minutes
Project No. 070-09
November 13, 2009 10:30 AM
09207049.04

Attendees: (Sign in sheet attached)

Glenn McCracken, Citrus County
Casey Stephens, Citrus County
Carmen Bruno, Citrus County
Mark Murlowski, Belair Builders
Gary Silbernagel, Belair Builders
Jeff Winiecki, Belair Builders
Daniel Cooper, SCS Engineers
Dominique Bramlett, SCS Engineers
Jim Burzenski, SCS Engineers
Chris Brown, Welbro
Lauren Greenfield, FDEP (Via conference call)

The meeting was held at the Citrus County Central Landfill in the conference room. The attendees were introduced to one another.

The agenda Distributed by Citrus County was followed. (See attached)

- I. Introductions were made for all people in attendance and what their roles would be in the project.
- II. Lines of Communications - It was established that Casey Stephens would be the project manager and point of contact for Citrus County with Carmen Bruno as his back up. Dan Cooper would be the point of contact for SCS with Dominique Bramlett as his back up. Mark Murlowski will be the office point for Belair concerning contract issues and Gary Silbernagel will be the operations point of contact and will be on site throughout the construction.
- III. Submittals- All of the submittals listed on the agenda were discussed and were delivered to SCS for review by Belair at the meeting. Belair inquired about the required permits. SCS will deliver all of the environmental and solid waste permits to Belair. Belair will obtain the required building and/or electrical permits from Citrus County. They have a meeting with the County building department set up.
- IV. Project Schedule
The project and contract schedule were discussed. The County will issue the Notice to proceed for November 23, 2009. Belair has provided base schedule as part of contract and this schedule will be updated as changes occur throughout the project.
The working hours were discussed as well as Saturday work; Belair may work on Saturdays but will not plan on hauling soil across the site on these days.

- V. Progress Meetings- The time and location of the weekly progress meeting was established for the remainder of the project. Meetings will be held on Thursday mornings at 10:30 AM in the conference room at the landfill. The first routine meeting is scheduled for December 3, 2009.
- VI. Coordination with On-going Landfill activities or other contractor- During drilling Belair will be hauling waste to the working face. Drillings from the 7-Acre cell will be weighed and relocated to the open face, while drillings from the Phase 1/1A & 2 cells will simply be relocated to the working face. The last load of waste must be deliver to working face by 4:30 PM.
- VII. Use of Premises- Each agenda item was discussed and outcomes are itemized below.
- Storage sites – Belair is planning on storing material on Southern end of 7-acre cell and near the western access gate by the recycling containers.
 - Site Access/Security- Belair will place a lock on the western gate in a daisy chain fashion so both they and the sheriff's department will have individual access.
 - Stock pile area review- Citrus will direct Belair where exactly the excess soil will be placed once excavation activities begin.
 - Temporary Facilities/Utilities- Citrus indicted where the temporary utilities are located and Belair will coordinate directly with utilities.
 - Safety and First Aid Procedure- This is part of Belair's Health and Safety Plan, a tailgate safety meeting will be held daily.
 - Signage- Post of Sign- County has not yet decided on signage. They will inform Belair once a decision has been made.
 - Litter control/Facility Permit review- Belair will be watering the road during earth moving as needed and will review permits to assure compliance with site permits.
- VIII. Procedures review- SCS went through the procedure for submitting shop drawings applications for payment, change orders and requests for information.
- IX. Contractors Issues – Belair inquired as to where the power for the flare was to be extended from. Belair will coordinate with local utility and bring County into review the plan once established.
- X. County Issues- No issues at this time.
- XI. Engineers Issues – SCS mentioned that the tie-in to the existing liner is critical item and caution should be observed when locating and performing all work near existing liner.
- XII. Other Business – SCS will provide a laminated contact's card for the project to all parties.

ATTACHMENT D
PHOTOGRAPHS

Photograph Number 1



Date: November 23, 2009 **Site:** Phase I / IA & 2 GCCS Construction, Citrus County, Florida
Description: Pre-construction condition on south side of Phase 1/1A and 2 Landfill.

Photograph Number 2



Date: November 23, 2009 **Site:** Phase I / IA & 2 GCCS Construction, Citrus County, Florida
Description: Pre-construction condition DRA-3 after survey.

Photograph Number 3



Date: November 23, 2009 **Site:** Phase I / IA & 2 GCCS Construction, Citrus County, Florida
Description: Pre-construction condition DRA-2 after survey.

Photograph Number 4



Date: November 23, 2009 **Site:** Phase I / IA & 2 GCCS Construction, Citrus County, Florida
Description: Installation of erosion control fencing.

Photograph Number 5



Date: November 23, 2009 **Site:** Phase I / IA & 2 GCCS Construction, Citrus County, Florida
Description: Erosion control fencing on west side of 7-acre landfill.

Photograph Number 6



Date: November 23, 2009 **Site:** Phase I / IA & 2 GCCS Construction, Citrus County, Florida
Description: Erosion control fencing along north side of property line.

Photograph Number 7



Date: November 23, 2009 **Site:** Phase I / IA & 2 GCCS Construction, Citrus County, Florida
Description: Rough grading of DRA-1.

Photograph Number 8



Date: November 23, 2009 **Site:** Phase I / IA & 2 GCCS Construction, Citrus County, Florida
Description: Rough grading in DRA-1.

SCS ENGINEERS

January 13, 2010
File No. 09207049.04

Ms. Susan J. Pelz, P.E.
Solid Waste Management
Florida Department of Environmental Protection
13051 N. Telecom Parkway
Temple Terrace, Florida 33637-0926

Dept. Of Environmental Protection
JAN 15 2010
Southwest District

Subject: Monthly Summary of Construction – December 2009
Citrus County Central Class I Landfill Phase 1/1A & 2 Gas Collection and
Control System Construction
Citrus County, Florida
Permit No. 21375-017-SC/08

Dear Susan:

On behalf of the Citrus County Solid Waste Management Division (SWMD), SCS Engineers (SCS) is submitting the second monthly progress report for the Phase 1/1A & 2 Gas Collection and Control System Construction Project as required under Specific Condition Part B, Item 5.b. of construction permit no. 21375-017-SC/08. As required by the permit conditions, the monthly progress report includes the following:

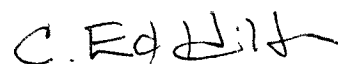
1. A narrative explaining the status and any delays of major stages in the construction.
2. A summary of submittals and change order requests.
3. Weekly progress meeting summaries.
4. Color copies of photographs which are representative of the typical construction activities for the reporting period, and photographs which show overall views and details of major stages of construction.

Please call us if you have any questions.

Sincerely,



Daniel R. Cooper, P.E.
Project Manager
SCS ENGINEERS



C. Ed Hilton, P.E.
Vice President
SCS ENGINEERS

cc: Casey Stephens, SWMD

Enclosure



SCS ENGINEERS

January 13, 2010
File No. 09207049.04

**Phase 1/1A & 2 Gas Collection and Control System Construction
BID No. 070-09, Permit No. 21375-017-SC/08
Monthly Progress Report No. 2 (December 2009)**

Dept. Of Environmental Protection
JAN 15 2010
Southwest District

On behalf of the Citrus County Solid Waste Management Division (SWMD), SCS Engineers (SCS) has prepared the following monthly summary of the construction activities conducted for the above referenced project from December 1, 2009 through December 31, 2009.

PROJECT OVERVIEW

Work in December included the following:

- Survey and staking of wells, header and lateral lines.
- Submittals for pipe, sumps, and fittings processed.
- Blower/Flare submittal received and under review by Engineer.

PROJECT SCHEDULE

The Contractor's most current construction schedule is provided in Attachment A.

SUMMARY OF SUBMITTALS/CHANGE ORDERS

The summary list of submittals reviewed to-date by SCS for the project is provided in Attachment B.

CONSTRUCTION PROGRESS MEETING SUMMARY REPORTS

Attachment C contains the summary of the progress meetings that were held during the month of December.

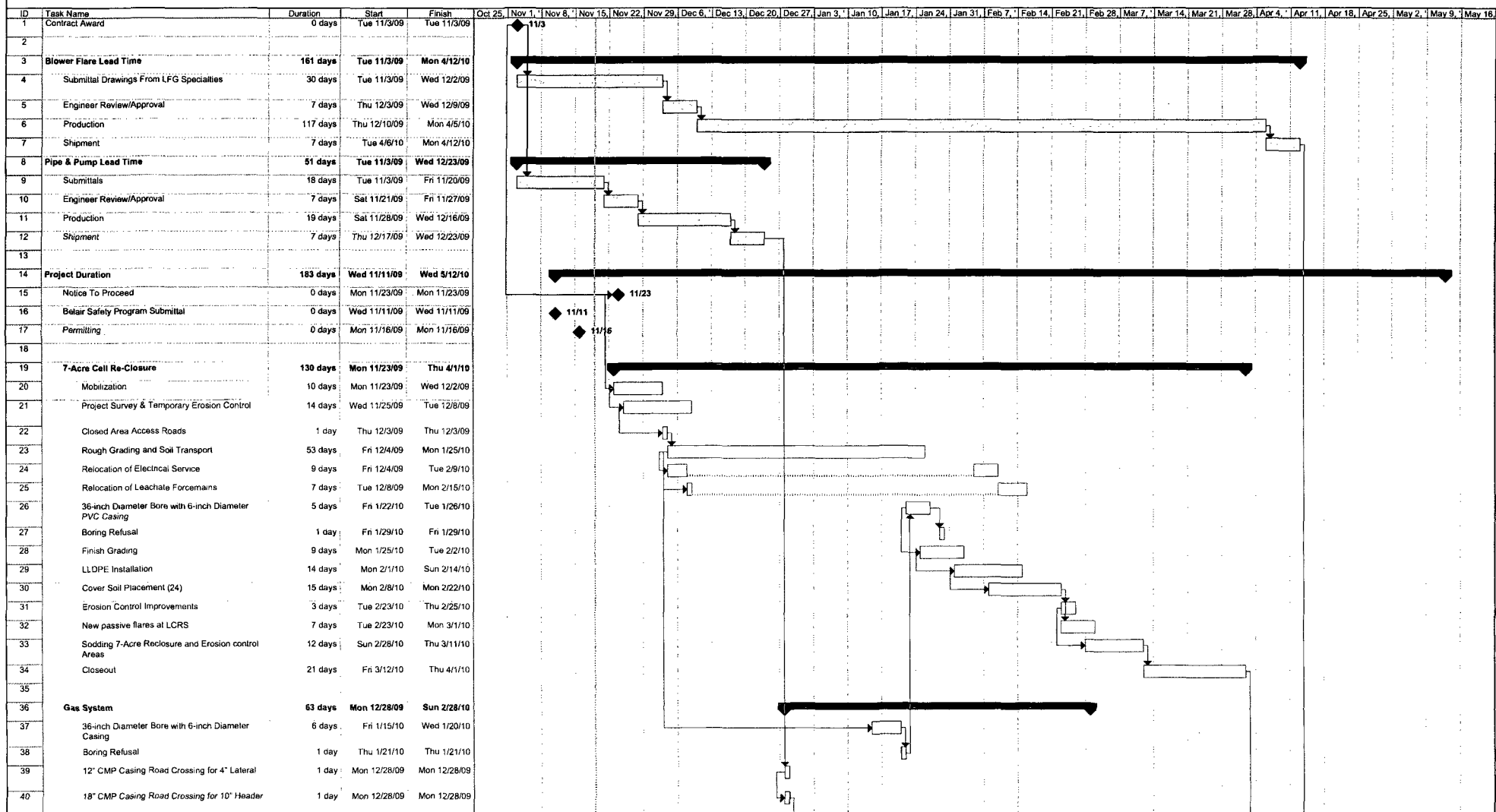
CONSTRUCTION PHOTOGRAPHS

Attachment D includes photographs that are representative of typical construction activities during the month of December.



ATTACHMENT A
CONTRACTOR'S SCHEDULE

Citrus County 7-Acre Closed Area Re-Closure & Landfill Gas System Installation Gantt Chart



ID	Task Name	Duration	Start	Finish
41	18" Steel Casing Ditch Crossing for 10" Header	3 days	Tue 12/29/09	Thu 12/31/09
42	Erosion Control Improvements	5 days	Fri 1/1/10	Tue 1/5/10
43	10" HDPE SDR 17 Landfill Gas Below Grade Header	1 day	Fri 1/1/10	Fri 1/1/10
44	8" Header Isolation Valve	1 day	Mon 1/4/10	Mon 1/4/10
45	8" HDPE SDR 17 Landfill Gas Below Grade Header	8 days	Tue 1/5/10	Tue 1/12/10
46	2" HDPE SDR 9 Air Line in Trench with Header	1 day	Thu 1/7/10	Thu 1/7/10
47	6" HDPE SDR 17 Header Pipe Below Grade	2 days	Wed 1/13/10	Thu 1/14/10
48	4" HDPE SDR 17 Header Pipe Below Grade	4 days	Fri 1/15/10	Mon 1/18/10
49	4" HDPE SDR 17 Header Pipe Above Grade	7 days	Tue 1/19/10	Mon 1/25/10
50	10" HDPE SDR 17 Landfill Gas Above Grade Header	1 day	Tue 1/26/10	Tue 1/26/10
51	2" HDPE SDR 11 Condensate Discharge in Dedicated Trench	1 day	Wed 1/27/10	Wed 1/27/10
52	Tie-in to Leachate Holding Tank	1 day	Thu 1/28/10	Thu 1/28/10
53	18" Condensate Sump with Pump	1 day	Sun 1/31/10	Sun 1/31/10
54	12" Condensate Sump with Pump	1 day	Mon 2/1/10	Mon 2/1/10
55	18" HDPE Self Draining Condensate Traps	1 day	Tue 2/2/10	Tue 2/2/10
56	6" Real Environmental Products Quick Cap	1 day	Wed 2/3/10	Wed 2/3/10
57	6" Well Vacuum Cap (Quick Cap)	1 day	Wed 2/3/10	Wed 2/3/10
58	8" Well Vacuum Cap (Quick Cap)	1 day	Thu 2/4/10	Thu 2/4/10
59	4" HDPE SDR 17 Leachate Collection Riser Tie-in	1 day	Sun 2/7/10	Sun 2/7/10
60	4" HDPE SDR 17 Leachate Collection Riser Condensate Discharge Line Tie-in	1 day	Mon 2/8/10	Mon 2/8/10
61	Landfill Gas Vertical Wellheads	3 days	Mon 2/8/10	Wed 2/10/10
62	Type "A" LFG Tie-in to Existing LCRS Riser	1 day	Wed 2/10/10	Wed 2/10/10
63	Type "B" LFG Tie-in to Existing LCRS Riser	1 day	Thu 2/11/10	Thu 2/11/10
64	Type "C" LFG Tie-in to Existing LCRS Riser	1 day	Thu 2/11/10	Thu 2/11/10
65	Type "D" LFG Tie-in to Existing LCRS Riser	1 day	Sun 2/14/10	Sun 2/14/10
66	Type "E" LFG Tie-in to Existing LCRS Riser	1 day	Sun 2/14/10	Sun 2/14/10
67	Testing of Gas System	14 days	Mon 2/15/10	Sun 2/28/10
68				
69	Schedule Suspension; BOCC Approved	11 days	Fri 4/2/10	Mon 4/12/10
70	Delay due to Flare	11 days	Fri 4/2/10	Mon 4/12/10
71				
72	Flare Station Installation	30 days	Tue 4/13/10	Wed 5/12/10
73	Flare Station Electrical Utilities	7 days	Tue 4/13/10	Mon 4/19/10
74	Blower Flare system	9 days	Tue 4/13/10	Wed 4/21/10
75	Sodding Gas System Areas	1 day	Wed 4/21/10	Wed 4/21/10
76	Testing of Gas System	2 days	Tue 4/20/10	Wed 4/21/10
77	Closure	21 days	Thu 4/22/10	Wed 5/12/10

ATTACHMENT B
SUMMARY OF SUBMITTALS REVIEWED

7-ACRE RE-CLOSURE SUBMITTAL TRACKING LOG

Submittal No.	PRODUCT	Sub-Contractor/ PartSupplier	Actual Submitted Date	Approved Date	Rejected Date	Make Corrections	Resubmitted Date	REMARKS
013010-1	Shop Drawing Submittal Log	Belair Excavating	11/17/2009	11/18/2009				
013010-10	Subcontractors List	Belair Excavating	11/17/2009	11/18/2009				
013010-11	Topographic Map	Belair Excavating	11/25/2009	11/30/2009				
013010-2	Excavation Plan	Belair Excavating	11/17/2009	11/18/2009				
013010-3	Erosion and Pollution Control Plan	Belair Excavating	11/17/2009	11/18/2009				
013010-4	Quality Control Plan	Belair Excavating	11/17/2009	11/18/2009				
013010-5	Maintenance of Traffic Plan	Belair Excavating	11/17/2009	11/18/2009				
013010-6	Health and Safety Plan	Belair Excavating	11/17/2009	11/18/2009		11/30/2009	12/3/2009	Belair Excavating provided additional information per original submittal comments on 12/3/09 that were incorporated into original
013010-7	Documentation of training of Health and Safety Office	Belair Excavating	11/17/2009	11/18/2009				
013010-8	List of Permits and Belair Licenses	Belair Excavating	11/17/2009	11/18/2009				
013010-9	Application of Payment Documents & Schedule of	Belair Excavating	11/17/2009	11/18/2009				
013011-1	Gannt Chart Schedule	Belair Excavation	11/19/2009	12/2/2009				
015000-2	Preliminary Photos and Videos	Aerial Innovations	11/20/2009	12/11/2009				

7-ACRE RE-CLOSURE SUBMITTAL TRACKING LOG

Submittal No.	PRODUCT	Sub-Contractor/ PartSupplier	Actual Submitted Date	Approved Date	Rejected Date	Make Corrections	Resubmitted Date	REMARKS
015055-1	Site Conditions survey-Precon	Belair Excavation sub- BBLs	12/3/2009	12/7/2009				Signed and sealed version
160100-1	Electrical Submittals	Coastal Electrical Contractors	12/14/2009	12/18/2009				
238125-1	Compressed Air System	Grainger	12/14/2009	12/22/2009				
330520-1	Polyethylene Geomembrane Liner	Agru	11/20/2009	1/6/2010				Requested additional information provided 1/5/10 on two type of material to be used.
332170-1	LFG Extraction Wells	Shaw Environmental	12/10/2009	12/17/2009				
335110-1	Pipe and Pipe Fittings	Ferguson Enterprises	11/30/2009	12/16/2009				Additional information requested 12/7/09
441120-1	Blower/Flare System - Gas Analyzer	Shaw- LFG Specialties	12/22/2009	1/11/2010				
441120-2	Blower/Flare System - Electrical	Shaw- LFG Specialties	12/22/2009	1/11/2010				Given to Electrical Engineer 1/6/10, returned 1/08/10
441120-3	Blower/Flare System - Mechanical	Shaw- LFG Specialties	12/22/2009	1/11/2010				
444260-1	Condensate Pump	QED	12/1/2009	12/7/2009				

ATTACHMENT C
CONSTRUCTION PROGRESS MEETING SUMMARY REPORTS

SCS ENGINEERS

December 4, 2009

File No. 09207049.04

Citrus County 7-Acre Closed Area Re-Closure and Landfill Gas System Construction

Bid No. 070-09

Construction Progress Meeting No. 1 Summary (12/4/09)

Attendees:

Casey Stephens and Carmen Bruno, Citrus County Solid Waste Management Division
Dan Cooper, SCS Engineers (SCS)
Glen McCracken and Mike Wimer Citrus County Public Works Department
Gary Sibernagel, Belair Builders (Belair)

The meeting was held at the Citrus County Central Landfill and began at 10:30 AM on Thursday December 3, 2009

1.1 Status of issues from Pre-Construction Meeting

Construction Trailer Set up – Belair's Construction Trailer is set up adjacent to parking area.

Temporary Utilities - Belair is in all set with the exception of power, which is in process with the power utility. Trailer is running on generator power temporarily.

Waste Processing Account – Belair will coordinate with Carmen to set up account for waste transferred from closed are to open area. Waste relocated within the open area will not need to be weighed.

Desired Location of Soil Stockpile - Belair will coordinate with County to determine desire location of excavated material adjacent to the mulch area.

1.2 Work progress

Since Last meeting.

Shop Drawings - Several shop drawing were submitted for approval-details below

Survey- Preliminary survey was submitted to SCS and returned to Belair for signature and seal by surveyor.



Excavation of DRA-1, 2 & 3 – Rough grading of all ponds is complete with exception of the areas in DRA- 2 and 3 where there are trees. Site was walked after meeting and Belair was informed how to structure ponds to save trees and blend in top of bank.

Expected progress-during next work period.

Earth Moving- Excavation of the area above DRA-2 has begun and Belair will work southward over the 7 acre closed landfill area.

Shop Drawings- Blower/Flare Submittal is in process with supplier and will be submitted shortly. System outputs will be digital to mesh with County system.

Materials Arriving- Belair will be receiving materials and will lay down pipe on south side of open area where pipe will be installed.

- 1.3 Field Observations- Trees around retention area. They will all be saved and DRAs modified slightly to ensure capacity.

Need to work out electrical service to the back of the site. Belair and the County will work with Progress energy to determine requirements based on design loads. Enough capacity will need to be provided to accommodate gas system and future requirements.

- 1.4 Construction Schedule- The project is on schedule with progress continuing through December 23rd before break for holidays.

Blower Flare Delivery- SEC has given requirements to contractor but has not received confirmation of delivery date.

- 1.5 Coordination of work items with County activities- Belair is coordinating daily with County. Soil storage area has been determined and County will direct Belair to new area once area next to mulch area is filled.

- 1.6 Shop drawings and other submittals

015000-1 Site conditions survey has been processed

Pay Application #1- Belair will submit after end of each month to SCS for approval, then SCS will forward approved applications to Casey for processing. 3 original copies to be submitted.

- 1.7 Record documents – Mike with County is keeping daily activity logs and will forward to SCS every day or so. Photographs will be taken by Mike and given to SCS periodically. Belair to submit hard copies of photos every other week.
- 1.8 Maintenance of quality standards- All records are being kept in Belair trailer. Any deviations should be tracked on redline set of plans.
- 1.9 Pending Changes or substitutions – Leachate pump stations may be higher than expected. Belair will provide quote to modify concrete rings to lower overall height. County will also review the risers and see if this work can be done by County crews.
- 1.10 Other Business- Belair is requesting 5 additional set of signed and sealed drawings for permitting purposes. SCS will provide.

Belair is getting push back on permitting and is being asked to provide site permit, which should not be required. Glenn will look into permitting and work with Belair to figure out what is required.

- 1.11 Next Meeting Date- December 10, 2009, 10:30 AM at Citrus County Central Landfill admin building.

SCS ENGINEERS

December 11, 2009
File No. 09207049.04

Citrus County 7-Acre Closed Area Re-Closure and Landfill Gas System Construction Bid No. 070-09 Construction Progress Meeting No. 2 Summary (12/11/09)

Attendees:

Casey Stephens and Carmen Bruno, Citrus County Solid Waste Management Division
Dan Cooper, SCS Engineers (SCS)
Steve Dixon and Mike Wimer Citrus County Public Works Department
Gary Sibernagel, Belair Builders (Belair)

The meeting was held at the Citrus County Central Landfill and began at 10:30 AM on Thursday December 10, 2009

2.1 Status of issues from Pre-Construction Meeting

Waste Processing Account – Belair will coordinate with Carmen to set up account for waste transferred from closed are to open area once needed. Thus far no waste has been encountered.

Relocation of top of bank on DRAs 2 and 3. Site walk after last meeting produced solution to save all trees along north edge of DRAs. Top of bank will be blended in around trees and bottom of ponds will be excavated to ensure capacity.

Electrical service coordination – Progress energy has been on site once and will return to meet with Carmen and Gary to go over requirements.

2.2 Work progress

Since Last meeting.

Shop Drawings - Pay Application #1 was forwarded to County

Rough grading of 7-Acre Cell- Work is progressing well and excavation is still on schedule even after heavy rains over the weekend. .

Temporary forcemain installed and is pumping every other day. Belair coordinating with County and will pump as necessary.

Expected progress-during next work period.

Earth Moving- Excavation of the area above DRA-2 will continue and Belair is hoping to have first pass completed by holiday break.

Shop Drawings- Blower/Flare Submittal is still in process with supplier.

Sodding of DRAs- Belair may possibly apply sod to DRAs depending upon schedule and weather current silt control measures have been working and are keeping all sediments on site and are checked after every storm event.

2.3 Field Observations- No issues at this time.

2.4 Construction Schedule- The project is on schedule with progress continuing through December 23rd before break for holidays. Drill rig will be scheduled for Early January once pipe is on site. Pipe crew will arrive to begin pipe preparation in early January. Blower/Flare submittal is coming along and will be with Belair soon.

Blower Flare Delivery- Blower/Flare submittal is coming along and will be with Belair soon.

2.5 Coordination of work items with County activities- Belair is coordinating daily with County.

2.6 Shop drawings and other submittals

335110-1 Pipe and Pipe Fittings- In process with SCS. SCS has questions on some caps and will meet with Belair after meeting to go over requirements before approving.

Upcoming submittals will include pre-construction video and photos, geomenbrane material, electrical gear and pre construction survey of gas system area

2.7 Record documents – Mike provided picture to SCS for work thus far. County will receive Belair dailies at least weekly and they will be submitted to Mike.

2.8 Maintenance of quality standards- All records are being kept in Belair trailer. Any deviations should be tracked on redline set of plans.

2.9 Pending Changes or substitutions – Electrical service requirements will be reviewed and update provided based on Blower/Flare submittal, may need separate panel before

skid.

- 2.10 Other Business- SCS to place permit back on ftp site so Belair can download and keep onsite.

Belair is still having trouble getting permits (electrical and building) from County. Carmen and Steve will assist Belair to figure out exactly why county permitting agency is asking for additional permit beyond electrical and basic structural permit for shed.

- 2.11 Next Meeting Date- December 10, 2009, 10:30 AM at Citrus County Central Landfill admin building.

SCS ENGINEERS

December 22, 2009
File No. 09207049.04

**Citrus County 7-Acre Closed Area Re-Closure and Landfill Gas System Construction
Bid No. 070-09
Construction Progress Meeting No. 3 Summary (12/21/09)**

Attendees:

Casey Stephens and Carmen Bruno, Citrus County Solid Waste Management Division
Dan Cooper, SCS Engineers (SCS)
Mike Wimer Citrus County Public Works Department
Gary Sibernagel, Belair Builders (Belair)

The meeting was held at the Citrus County Central Landfill and began at 1:30 PM on Monday December 21, 2009

3.1 Status of issues from Last Meeting

Waste Processing Account – Belair will inform County of loads taken to open area. Most is mostly soil with very small amount of waste and will be used by County in cover operations.

Electrical service coordination – Progress energy has given 12 week lead time to bring service to back of site and will not charge County for service extension. Carmen and Gary will coordinate with Terry Bishop of Progress Energy.

3.2 Work progress

Since Last meeting.

Shop Drawings - Several have been submitted and are in process see below.

Rough grading of 7-Acre Cell- Work is progressing well and rough grading is almost complete on top of closed area. Progress will continue on east side of Landfill and then liner location on south end will take place.

Expected progress-during next work period.

Earth Moving- Excavation of the closed area will continue as described above moving to east and south ends before holiday break.

Shop Drawings- Blower/Flare Submittal has been received by Belair and will be forwarded to SCS within the next few days.

Sodding of DRAs- This will wait until after break once excavation of closed area is complete and equipment is available to provide fine grading of ponds.

- 3.3 Field Observations- No issues at this time.
- 3.4 Construction Schedule- The project is on schedule with progress continuing through December 23rd before break for holidays. Drill rig will be scheduled for Early January (11th) once pipe is on site. Pipe crew will arrive to begin pipe preparation on January 11th. Liner Crew is scheduled for the week of the January 25th.
- 3.5 Coordination of work items with County activities- Belair is coordinating daily with County.
- 3.6 Shop drawings and other submittals

332170-1 LFG Extraction Wells- Approved
238125-1 Compressed air System – Approved
015000-2 Preliminary Photos and Video – Approved

330520-1 Polyethylene Geomembrane Liner- In process with SCS. SCS needs to coordinate with test company (TRI) to set up conformance testing and determine exactly which materials are begin used. Gary and Dan spoke with Rep and are awaiting response/clarification.

160100-1 Electrical Submittals- Processed. Need to make sure electrical sub Coastal Electrical Contractors (CEC) coordinates with Blower/Flare manufacture to verify where service will need to be provided.

- 3.7 Record documents – Belair is giving dailies to Mike and he is holding for County records in project folder. Belair will send photographs (hard copies that were due December 17, 2009) to SCS.
- 3.8 Maintenance of quality standards- All records are being kept in Belair trailer. Any deviations should be tracked on redline set of plans.
- 3.9 Pending Changes or substitutions – Belair needs to provide proposal for lowering LCRS to County. Also there is excess material above DRA-4 that may need to be graded to assure proper drainage. Belair will review and provide proposal to re-grade

or move material.

- 3.10 Other Business- SCS to place permit back on ftp site so Belair can download and keep onsite.

Belair is still having trouble getting permits (electrical and building) from County. Casey is reviewing requirements with County. Belair requested 4 additional signed/sealed drawings sets and SCS will provide.

- 3.11 Next Meeting Date- January 7, 2009, 10:30 AM at Citrus County Central Landfill admin building.

ATTACHMENT D
PHOTOGRAPHS

Photograph Number 1



Date: December 1, 2009 **Site:** 7 Acre Closed Class 1 Landfill Re-Closure, Citrus County, FL
Description: Excavation of excess soil between DRA #2 and 7-acre area.

Photograph Number 2



Date: December 2, 2009 **Site:** 7 Acre Closed Class 1 Landfill Re-Closure, Citrus County, FL
Description: Excavation of the northwest corner of the existing lined area.

Photograph Number 3



Date: December 2, 2009 **Site:** 7 Acre Closed Class 1 Landfill Re-Closure, Citrus County, FL
Description: A truck delivering excavated soil to the stockpile area..

Photograph Number 4



Date: December 3, 2009 **Site:** 7 Acre Closed Class 1 Landfill Re-Closure, Citrus County, FL
Description: Grading of DRA #2 after excavation.

Photograph Number 5



Date: December 6, 2009 **Site:** 7 Acre Closed Class 1 Landfill Re-Closure, Citrus County, FL
Description: Leachate collection riser exposed during regrading being fitted with temporary forcemain.

Photograph Number 6



Date: December 8, 2009 **Site:** 7 Acre Closed Class 1 Landfill Re-Closure, Citrus County, FL
Description: Excavated area in northwest corner showing old cap material.

Photograph Number 7



Date: December 15, 2009 **Site:** 7 Acre Closed Class 1 Landfill Re-Closure, Citrus County, FL
Description: Excavation showing location of existing liner on east side of 7-acre closed area.

Photograph Number 8



Date: December 15, 2009 **Site:** 7 Acre Closed Class 1 Landfill Re-Closure, Citrus County, FL
Description: Excavation of material along west side of closed area. Old cap can be seen 2-3 feet below grade.

SCS ENGINEERS

February 15, 2010
File No. 09207049.04

Ms. Susan J. Pelz, P.E.
Solid Waste Management
Florida Department of Environmental Protection
13051 N. Telecom Parkway
Temple Terrace, Florida 33637-0926

Dept. Of Environmental Protection
FEB 15 2010
Southwest District

Subject: Monthly Summary of Construction – January 2010
Citrus County Central Class I Landfill Phase 1/1A & 2 Gas Collection and
Control System Construction
Citrus County, Florida
Permit No. 21375-017-SC/08

Dear Susan:

On behalf of the Citrus County Solid Waste Management Division (SWMD), SCS Engineers (SCS) is submitting the third monthly progress report for the Phase 1/1A & 2 Gas Collection and Control System Construction Project as required under Specific Condition Part B, Item 5.b. of construction permit no. 21375-017-SC/08. As required by the permit conditions, the monthly progress report includes the following:


1. A narrative explaining the status and any delays of major stages in the construction.
2. A summary of submittals and change order requests.
3. Weekly progress meeting summaries.
4. Color copies of photographs which are representative of the typical construction activities for the reporting period, and photographs which show overall views and details of major stages of construction.

Please call us if you have any questions.

Sincerely,



Daniel R. Cooper, P.E.
Project Manager
SCS ENGINEERS



C. Ed Hilton, P.E.
Vice President
SCS ENGINEERS

cc: Casey Stephens, SWMD

Enclosure



SCS ENGINEERS

February 12, 2010
File No. 09207049.04

Phase 1/1A & 2 Gas Collection and Control System Construction BID No. 070-09, Permit No. 21375-017-SC/08 Monthly Progress Report No. 3 (January 2010)

On behalf of the Citrus County Solid Waste Management Division (SWMD), SCS Engineers (SCS) has prepared the following monthly summary of the construction activities conducted for the above referenced project from January 1, 2010 through January 31, 2010.

PROJECT OVERVIEW

Work in January included the following:

- Completion of survey and staking of wells, header and lateral lines.
- Installation of Gas Extraction Wells EW-1 through EW-4 and EW 9 through EW-11.
- Installed road crossing north of CS-2.
- Fusing of pipe for installation in early February

PROJECT SCHEDULE

The Contractor's construction schedule has not changed since the December 2009 report submittal.

SUMMARY OF SUBMITTALS/CHANGE ORDERS

The summary list of submittals reviewed to-date by SCS for the project is provided in Attachment B.

CONSTRUCTION PROGRESS MEETING SUMMARY REPORTS

Attachment C contains the summary of the progress meetings that were held during the month of January.

CONSTRUCTION PHOTOGRAPHS

Attachment D includes photographs that are representative of typical construction activities during the month of January.



ATTACHMENT B
SUMMARY OF SUBMITTALS REVIEWED

7-ACRE RE-CLOSURE SUBMITTAL TRACKING LOG

Submittal No.	PRODUCT	Sub-Contractor/ Part/Supplier	Actual Submitted Date	Approved Date	Rejected Date	Make Corrections	Resubmitted Date	REMARKS
000000-1	Compressor Shed	Orlando Steel Enterprises	1/1/2010	1/14/2010				
000000-2	Fence Layout	Belair Contracting	1/12/2010	2/3/2010				
000000-3	Chain Link Fencing & Swing gates	Commercial fence Contractors	1/27/2010	2/3/2010				
000000-4	U-Type Endwalls	OldCastle	1/27/2010	2/2/2010				Changed to 24 inch inlet diameter from 18 inch
000000-5	Lift Station Top Slab	OldCastle	2/2/2010	2/10/2010				
000000-6	Lift Station Hatch	U.S.F Fabrication	2/2/2010	2/10/2010				
013010-1	Shop Drawing Submittal Log	Belair Excavating	11/17/2009	11/18/2009				
013010-10	Subcontractors List	Belair Excavating	11/17/2009	11/18/2009				
013010-11	Topographic Map	Belair Excavating	11/25/2009	11/30/2009				
013010-2	Excavation Plan	Belair Excavating	11/17/2009	11/18/2009				
013010-3	Erosion and Pollution Control Plan	Belair Excavating	11/17/2009	11/18/2009				
013010-4	Quality Control Plan	Belair Excavating	11/17/2009	11/18/2009				
013010-5	Maintenance of Traffic Plan	Belair Excavating	11/17/2009	11/18/2009				
013010-6	Health and Safety Plan	Belair Excavating	11/17/2009	11/18/2009		11/30/2009	12/3/2009	Belair Excavating provided additional information per original submittal comments on 12/3/09 that were incorporated into original submittal
013010-7	Documentation of training of Health and Safety Office	Belair Excavating	11/17/2009	11/18/2009				
013010-8	List of Permits and Belair Licenses	Belair Excavating	11/17/2009	11/18/2009				
013010-9	Application of Payment Documents & Schedule of Values	Belair Excavating	11/17/2009	11/18/2009				
013011-1	Gantt Chart Schedule	Belair Excavation	11/19/2009	12/2/2009				
015000-2	Preliminary Photos and Videos	Aerial Innovations	11/20/2009	12/11/2009				

7-ACRE RE-CLOSURE SUBMITTAL TRACKING LOG

Submittal No.	PRODUCT	Sub-Contractor/ PartSupplier	Actual Submitted Date	Approved Date	Rejected Date	Make Corrections	Resubmitted Date	REMARKS
015000-4	Existing conditions suvery- Ladfill gas sytem layout	BBLS Surveyors and mappers	2/8/2010	2/10/2010				
015000-5	As-Built Survey, Pre- liner installation conditions	BBLS Surveyors and mappers	2/3/2010	2/10/2010				
015000-6	Progress photos start up through 12/10/09	Belair Excavating	2/8/2010	2/10/2010				
015000-7	Progress photos 12/11/09 through 12/31/10	Belair Excavating	2/8/2010	2/10/2010				
015000-8	Progress photos 1/1/10 through 1/16/10	Belair Excavating	2/8/2010	2/10/2010				
015000-9	Progress photos 1/17/10 through 1/31/10	Belair Excavating	2/8/2010	2/10/2010				
015055-1	Site Conditions survey-Precon	Belair Excavation sub- BBLS	12/3/2009	12/7/2009				Signed and sealed version
160100-1	Electrical Submittals	Coastal Electrical Contractors	12/14/2009	12/18/2009				
238125-1	Compressed Air System	Grainger	12/14/2009	12/22/2009				
330520-1	Polyethylene Geomembrane Liner	Agru	11/20/2009	1/6/2010				Requested additional information provided 1/5/10 on two type of material to be used.
33.520-2	Polyethylene Geomembrane Liner	Agru	1/9/2010	1/18/2010				Cert. for last seven rolls
332170-1	LFG Extraction Wells	Shaw Environmental	12/10/2009	12/17/2009				
335110-1	Pipe and Pipe Fittings	Ferguson Enterprises	11/30/2009	12/16/2009				Additional information requested 12/7/09
335110-2	Quick Caps	Ferguson Enterprises	1/15/2010	2/2/2010				
441120-1	Blower/Flare System Gas Analyzer	Shaw- LFG Specialties	12/22/2009	1/11/2010				
441120-2	Blower/Flare System Electrical	Shaw- LFG Specialties	12/22/2009	1/11/2010				Given to Eletrical Engineer 1/6/10, returned 1/08/10
441120-3	Blower/Flare System Mechanical	Shaw- LFG Specialties	12/22/2009	1/11/2010				
444260-1	Condensate Pump	QED	12/1/2009	12/7/2009				

ATTACHMENT C
CONSTRUCTION PROGRESS MEETING SUMMARY REPORTS

January 8, 2010
File No. 09207049.04

**Citrus County 7-Acre Closed Area Re-Closure and Landfill Gas System Construction
Bid No. 070-09
Construction Progress Meeting No. 4 Summary (1/7/09)**

Attendees:

Casey Stephens and Carmen Bruno, Citrus County Solid Waste Management Division
Dan Cooper, SCS Engineers (SCS)
Mike Wimer and Steve Dixon, Citrus County Public Works Department
Gary Sibernagel, Belair Builders (Belair)

The meeting was held at the Citrus County Central Landfill and began at 10:30 AM on Thursday January 7, 2010

4.1 Status of issues from Last Meeting

County Permitting Issues – County is no longer requiring a separate license or a site permit. Electrical and Building permits will be required for the electrical work and compressor structure, respectively.

Electrical service coordination – Carmen and Gary met with Terry Bishop of Progress Energy on site. Progress will install overhead line to location appropriate distance from flare. Belair will carry power underground from there to meter and main power panel.

4.2 Work progress

Since Last meeting.

Shop Drawings - Several have been submitted and are in process see below.

Rough grading of 7-Acre Cell- Work is progressing well and rough grading is complete on North end and on top of closed area. Progress will continue on west side of landfill and then liner location on south end will take place, liner location on south end may be off slightly.

Surveyor layout of gas system- System layout has started and everywhere except where County is filling has been laid out.

Expected progress-during next work period.

Earth Moving- Excavation of the south end of closed area will continue.

Shop Drawings- Blower/Flare Submittal has been submitted by Belair and SCS will work with Belair and LFG Specialties to approve. Electrical section has been forwarded to Electrical engineer. .

- 4.3 Field Observations- County is filling in area where wells will need to go in. Once county has moved east Belair will survey in wells and pipe route..
 - 4.4 Construction Schedule- The project is on schedule. Drill rig will be on site between January 18-20th. Pipe crew will arrive this week to start welding up pipe stringers. Liner Crew is scheduled for the week of the January 25th.
 - 4.5 Coordination of work items with County activities- Belair is coordinating daily with County. Belair will need access to west gate to bring in liner. Belair will add there lock and then will have access.
 - 4.6 Shop drawings and other submittals
 - 330520-1 Polyethylene Geomembrane Liner- Approved
 - 441120-1 Blower/Flare – Gas Analyzer – In Process
 - 441120-1 Blower/Flare – Electrical- In Proccess
 - 441120-1 Blower/Flare – Mechanical – Approved, with Changes
 - Pay Application #2 – In Process
- Electrical Plan- Based upon blower submittal SCSwill provide new Electrical plan sheets for use in permitting.
- 4.7 Record documents – Belair is giving dailies to Mike and he is holding for County records in project folder. Belair will send photographs (hard copies that were due December 17, 2009) to SCS.
 - 4.8 Maintenance of quality standards- All records are being kept in Belair trailer. Any deviations should be tracked on redline set of plans. Belair is behind in delivering photos and will deliver 2 sets of 12 this week.
 - 4.9 Pending Changes or substitutions – Belair to provide proposal for lowering LCRS. Also for removal of excess material above DRA-4 that may need to be graded to assure proper drainage.
 - 4.10 Other Business- None

Summary – Construction Progress Meeting No. 4
Citrus County 7-Acre Closed Area Re-Closure and Landfill Gas System Construction
January 7, 2010
Page 3

- 4.11 Next Meeting Date- January 14, 2009, 10:30 AM at Citrus County Central Landfill
admin building.

January 15, 2010
File No. 09207049.04

**Citrus County 7-Acre Closed Area Re-Closure and Landfill Gas System Construction
Bid No. 070-09
Construction Progress Meeting No. 5 Summary (1/14/09)**

Attendees:

Casey Stephens and Carmen Bruno, Citrus County Solid Waste Management Division
Dan Cooper, SCS Engineers (SCS)
Mike Wimer, Citrus County Public Works Department
Gary Sibernagel, Belair Builders (Belair)

The meeting was held at the Citrus County Central Landfill and began at 10:30 AM on Thursday January 14, 2010

5.1 Status of issues from Last Meeting

County Permitting Issues – Belair is going to submit to County on Monday the 18th. SCS to provide new signed and sealed copies of Electrical drawings.

South edge of liner on 7-acre cell –Belair has not located liner everywhere on south side of cell. Belair will forward a drawing of actual liner locations and SCS CAD will provide new grading plan for top of liner and tie-in locations. Mike provided drawing he produced from GPS data to assist SCS with new grading plan.

5.2 Work progress

Since Last meeting.

Shop Drawings – Blower Flare submittal completed with comments. SCS to work with LFG Specialties to provide humidity/moisture sensor information. RFI on run of steel piping on skid has been submitted- SCS to respond.

Edge of liner located. Belair to provide survey and proposal for additional work conducted once grading plan is received.

Surveyor layout of gas system- SCS requested at least well location since drilling is scheduled for next week.

Expected progress-during next work period.

Grading- Grading of ponds will be completed while Belair waits for new grading plan. Grading for liner will commence once plan is received.

Pipe fusing is underway. SCS inquired about tees for laterals. Belair is planning on adding tees during trenching and placing of pipe.

Drilling of vent on closed cell to begin next week-SCS to provide new drawing sheet with updated vent schedule.

- 5.3 Field Observations- County commented on sod supplier, they may be able to provide products from existing County contractor on certain products. Belair will check with them in future.
- 5.4 Construction Schedule- The project is on schedule. Drill rig will be on site January 19. Pipe crew is on site. Liner Crew is scheduled for the week of the January 25. Blower order has been placed; Belair will provide estimated delivery date once known.
- 5.5 Coordination of work items with County activities- Belair inquired about material outside of silt fencing on south side of project above DRA-4. County wants to get it moved, Belair to provide proposal as part of south side regarding.
- 5.6 Shop drawings and other submittals

000000-1 Compressor Shed- Approved
441120-1 Blower/Flare – Gas Analyzer – Approved
441120-1 Blower/Flare – Electrical- Approved
441120-1 Blower/Flare – Mechanical – Approved, with Changes
Pay Application #2 – Forwarded to County

Electrical- RFI submitted about distance of electrical panels from Leachate collection risers. SCS to respond.

- 5.7 Record documents – Belair is giving dailies to Mike and he is holding for County records in project folder. Belair will send photographs (hard copies that were due December 17, 2009 and January 7) to SCS ASAP.
- 5.8 Maintenance of quality standards- All records are being kept in Belair trailer. Any deviations should be tracked on redline set of plans. Belair is behind in delivering photos.

Summary – Construction Progress Meeting No. 5
Citrus County 7-Acre Closed Area Re-Closure and Landfill Gas System Construction
January 15, 2010
Page 3

- 5.9 Pending Changes or substitutions – Belair mentioned use of electro fusion couplings. SCS pointed out that they were not specified and Belair will need to submit request with justification if they want to use them.
- 5.10 Other Business- Belair is requesting meeting minutes from meeting 1-3. SCS to send today. County awaiting proposal for lowering LCRS. Belair is working on it and believes one cap needs to be replaced so they are pricing this way.
- 5.11 Next Meeting Date- January 21, 2009, 10:30 AM at Citrus County Central Landfill admin building.

January 21, 2010
File No. 09207049.04

**Citrus County 7-Acre Closed Area Re-Closure and Landfill Gas System Construction
Bid No. 070-09
Construction Progress Meeting No. 6 Summary (1/21/09)**

Attendees:

Casey Stephens and Carmen Bruno, Citrus County Solid Waste Management Division
Dan Cooper, SCS Engineers (SCS)
Mike Wimer and Steve Dixon, Citrus County Public Works Department-Engineering
Carley Baltromitis, Intern for County
Gary Sibernagel, Belair Builders (Belair)

The meeting was held at the Citrus County Central Landfill and began at 10:45 AM on Thursday January 21, 2010

6.1 Status of issues from Last Meeting

County Permitting Issues – SCS provided new signed and sealed copies of Electrical drawings on Monday. Belair is submitting for permits later today.

Extension of electrical service – Progress Energy needs to County to set up account to assure meter can be placed. Belair met with Progress Energy to determine where above ground electrical will end and underground begin.

South edge of liner on 7-acre cell – SCS completed new grading plan for top of liner and sent to Belair via e-mail on January 20. Belair to get new grading plan into GPS for equipment and regrade Saturday and Monday to be prepared for liner on Wednesday, January 27.

6.2 Work progress

Since Last meeting.

Survey of Gas system- Completed and files sent to SCS yesterday. SCS to provide new well schedule for extraction wells later today. SCS to review layout and provide feedback on changes require to get above ground heard and CS-1 to workout based upon existing conditions.

Drilling of gas vents began on January 20. 3 wells were installed.

DRA's have been regraded and are ready for Sod.

Pipe welding has continued and pipe crew has place CMP for road crossing by leachate plant and is pouring pads for compressor and ditch crossing today.

Expected progress-during next work period.

Sod will be laid in DRA's Silt fencing is being relocated above DRA2 to protect sod.

Pipe fusing is underway. SCS inquired about tees for laterals. Belair is planning on adding tees during trenching and placing of pipe.

Drilling of vents on closed cell to continue through the end of week then drilling to move.

- 6.3 Field Observations- Belair requested night access to close area gate to bring in sod afterhours in order to stage material for following day. County OK'd and Belair will double lock gate with their lock for access.
- 6.4 Construction Schedule- The project is on schedule as of today. Drill rig will be on site though the end of next week January 30. Pipe crew is on site and is installing pad today for compressor building and ditch crossing. Liner Crew is scheduled for the week of the January 25 should begin liner installation by Wednesday. Blower order has been placed; Belair will provide estimated delivery date once known.
- 6.5 Coordination of work items with County activities- Belair inquired about material outside of silt fencing on south side of project above DRA-4. County wants to get it moved, Belair to provide proposal as part of south side regarding.
- 6.6 Shop drawings and other submittals

335110-2 Quick Caps- SCS has received.
RFI #4 requesting specification for Humidity Sensor- SCS to respond ASAP
- 6.7 Record documents – Belair is giving dailies to Mike and he is holding for County records in project folder. Belair will send photographs (hard copies that were due December 17, 2009 and January 7) to SCS ASAP.

Summary – Construction Progress Meeting No. 6
Citrus County 7-Acre Closed Area Re-Closure and Landfill Gas System Construction
January 21, 2010
Page 3

- 6.8 Maintenance of quality standards- All records are being kept in Belair trailer. Any deviations should be tracked on redline set of plans. Belair is behind in delivering photos.
- 6.9 Pending Changes or substitutions – Belair mentioned use of electro fusion couplings. SCS pointed out that they were not specified and Belair will need to submit request with justification if they want to use them.
- 6.10 Other Business- Belair submitted cost estimate for LCRS modifications. SCS gave copy to County and will send a formal recommendation to County next week. County mentioned that litter need to be collected on closed site. County has arranged for an educational field trip from local school to be on-site January 28. SCS will explain drilling and liner installation. Group is scheduled to be on site 9AM to 1PM. As result meeting was agreed to be moved to 1:30PM.
- 6.11 Next Meeting Date- January 28, 2009, 1:30 PM at Citrus County Central Landfill administration building.

January 28, 2010
File No. 09207049.04

**Citrus County 7-Acre Closed Area Re-Closure and Landfill Gas System Construction
Bid No. 070-09
Construction Progress Meeting No. 7 Summary (1/28/09)**

Attendees:

Casey Stephens, Citrus County Solid Waste Management Division
Dan Cooper, SCS Engineers (SCS)
Mike Wimer and Steve Dixon, Citrus County Public Works Department-Engineering
Gary Sibernagel, Belair Builders (Belair)

The meeting was held at the Citrus County Central Landfill and began at 1:30 PM on Thursday January 28, 2010

7.1 Status of issues from Last Meeting

County Permitting Issues –Belair has not yet submitted all the items for permitting, they are expecting to submit tomorrow January 29, 2009 and are expecting permits in two weeks.

Grading of 7-Acre Cell to new grading plan – Belair has been working on grading cell to new grading plan and has noticed a few spot where the plan was not working so they made minor changes. Surveyor will survey grades and Belair will submit liner grade survey.

7.2 Work progress

Since Last meeting.

Final Grading in preparation for liner. Grades have been achieved but there are objects still on the surface that have to be removed so as they do not penetrate liner during installation. ESI will work with Belair to get laborers to remove all debris from sub-base prior to placement of liner.

Drilling of gas vents on 7 Acre cell completed. Wells EW-1 and EW-2 completed on open cell, EW-3 is in process.

DRAs 1 and 3 sodding has been completed. DRA-2 sodding is going in today. Silt fence was moved up hill from DRA-2 to protect it from sediments.

Pipe welding to continue with 2 inch striped pipe being welded over next couple of days today. Crew to return and start installing pipe Tuesday.

Expected progress-during next work period.

Well Drilling will continue on open area and should be completed within 1 week. Driller will coordinate with County for well that needs to be drilled in working face area.

Placement of Liner- Edge of Liner first needs to be repaired as it is torn in many places. ESI will repair and track repairs on time and material basis. County and SCS CQA will track time for repairs and whether or not the repairs were pre-existing or caused by contractor. If it is unknown as to whether the damage is new or old that will also be noted. 60 mil liner material from bone yard on top of open cell will be used for repairs so there will be no material cost. Location of each repair will get a number and Mike will GPS coordinates.

- 7.3 Field Observations- None at this time
- 7.4 Construction Schedule- The project is on schedule as of today in regards to the closed area work. Piping installation for gas system is behind original schedule for installation, but fusing pipe will speed installation. Blower order has been placed; Belair will provide estimated delivery date once known.
- 7.5 Coordination of work items with County activities- Belair liner crew would like to work through the weekend, both Saturday and Sunday. Belair will submit request to Casey.
- 7.6 Shop drawings and other submittals
 - 335110-2 Quick Caps- SCS has received and requested additional info from vendor
 - 00 00 00-3 Fences and Gates- Approved.
 - RFI #4 requesting specification for Humidity Sensor- SCS working with LFG Specialties to specify sensor, once one is found RFI response will be sent out.
 - LFG System Layout- SCS will provide information to Belair on relocation of above grade header on east side of gas system once survey layout is received.
- 7.7 Record documents – Belair is giving dailies to Mike and he is holding for County records in project folder. Belair will send all photographs to bring submittals up to date to SCS within the week.

Summary – Construction Progress Meeting No. 7
Citrus County 7-Acre Closed Area Re-Closure and Landfill Gas System Construction
January 28, 2010
Page 3

- 7.8 Maintenance of quality standards- All records are being kept in Belair trailer. Any deviations should be tracked on redline set of plans. Belair will get caught up in delivering photos this week.
- 7.9 Pending Changes or substitutions – Belair will not be using electro fusion couplings.
- 7.10 Other Business- Belair submitted cost estimate for LCRS modifications. SCS will send letter of recommendation to County, then County will initiate CO process. Final grading on North end of 7-acre was discussed. 2 feet of depth must be maintained. Rather than produce another costly drawing Belair will make sure that there is at least 2 feet of cover over all liner material during placement of material.
- 7.11 Next Meeting Date- February 4, 2009, 10:30 AM at Citrus County Central Landfill administration building.

ATTACHMENT D
PHOTOGRAPHS

Photograph Number 1



Date: January 19, 2010 **Site:** Phase I / IA & 2 GCCS Construction, Citrus County, Florida
Description: Excavation for road crossing near CS-2.

Photograph Number 2



Date: January 19, 2010 **Site:** Phase I / IA & 2 GCCS Construction, Citrus County, Florida
Description: Backfilling over CMP for road crossing near CS-2.

Photograph Number 3



Date: January 21, 2010 Site: Phase 1 / IA & 2 GCCS Construction, Citrus County, Florida
Description: Grading of blower flare pad area.

Photograph Number 4



Date: January 21, 2010 Site: Phase 1 / IA & 2 GCCS Construction, Citrus County, Florida
Description: Pouring of concrete pad for compressor building slab.

Photograph Number 5



Date: January 21, 2010 **Site:** Phase I / IA & 2 GCCS Construction, Citrus County, Florida
Description: Pouring of concrete pad for ditch crossing.

Photograph Number 6



Date: January 25, 2010 **Site:** Phase I / IA & 2 GCCS Construction, Citrus County, Florida
Description: Waste removal from EW-01 during drilling.

Photograph Number 7



Date: January 25, 2010 Site: Phase 1 / IA & 2 GCCS Construction, Citrus County, Florida
Description: Placement of aggregate around gas extraction well.

Photograph Number 8



Date: January 25, 2010 Site: Phase 1 / IA & 2 GCCS Construction, Citrus County, Florida
Description: Installation of geotextile donut over aggregate in gas extraction well.

Photograph Number 9



Date: January 29, 2010 **Site:** Phase I / IA & 2 GCCS Construction, Citrus County, Florida
Description: Addition of water to hydrate bentonite seal on extraction well.

SCS ENGINEERS

March 15, 2010
File No. 09207049.04

Dept. of Environmental
Protection

MAR 15 2010

Southwest District

Ms. Susan J. Pelz, P.E.
Solid Waste Management
Florida Department of Environmental Protection
13051 N. Telecom Parkway
Temple Terrace, Florida 33637-0926

Subject: Monthly Summary of Construction – February 2010
Citrus County Central Class I Landfill Phase 1/1A & 2 Gas Collection and
Control System Construction
Citrus County, Florida
Permit No. 21375-017-SC/08

Dear Susan:

On behalf of the Citrus County Solid Waste Management Division (SWMD), SCS Engineers (SCS) is submitting the fourth monthly progress report for the Phase 1/1A & 2 Gas Collection and Control System Construction Project as required under Specific Condition Part B, Item 5.b. of construction permit no. 21375-017-SC/08. As required by the permit conditions, the monthly progress report includes the following:

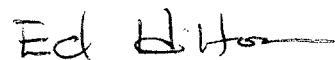
1. A narrative explaining the status and any delays of major stages in the construction.
2. A summary of submittals and change order requests.
3. Weekly progress meeting summaries.
4. Color copies of photographs which are representative of the typical construction activities for the reporting period, and photographs which show overall views and details of major stages of construction.

Please call us if you have any questions.

Sincerely,



Daniel R. Cooper, P.E.
Project Manager
SCS ENGINEERS



C. Ed Hilton, P.E.
Vice President
SCS ENGINEERS

cc: Casey Stephens, SWMD

Enclosure



SCS ENGINEERS

March 15, 2010
File No. 09207049.04

**Phase 1/1A & 2 Gas Collection and Control System Construction
BID No. 070-09, Permit No. 21375-017-SC/08
Monthly Progress Report No. 4 (February 2010)**

On behalf of the Citrus County Solid Waste Management Division (SWMD), SCS Engineers (SCS) has prepared the following monthly summary of the construction activities conducted for the above referenced project from February 1, 2010 through February 28, 2010.

PROJECT OVERVIEW

Work in February included the following:

- Installation of Gas Extraction Wells EW-5 through EW-8. All well drilling is now complete on the project.
- Installation of LFG Header from V-1 to CT-2, V-2 to CS-1 and from 8" line to CT-1 including risers for gas extraction wells.
- Installed road crossing next to HP and W-4 across hurricane road
- Drilling and setting of bottom portions of CT-1 and CT-2.

PROJECT SCHEDULE

An update Contractor's construction schedule issued on February 17, 2010 is provided in Attachment A.

SUMMARY OF SUBMITTALS/CHANGE ORDERS

The summary list of submittals reviewed to-date by SCS for the project is provided in Attachment B.

CONSTRUCTION PROGRESS MEETING SUMMARY REPORTS

Attachment C contains the summary of the progress meetings that were held during the month of February.

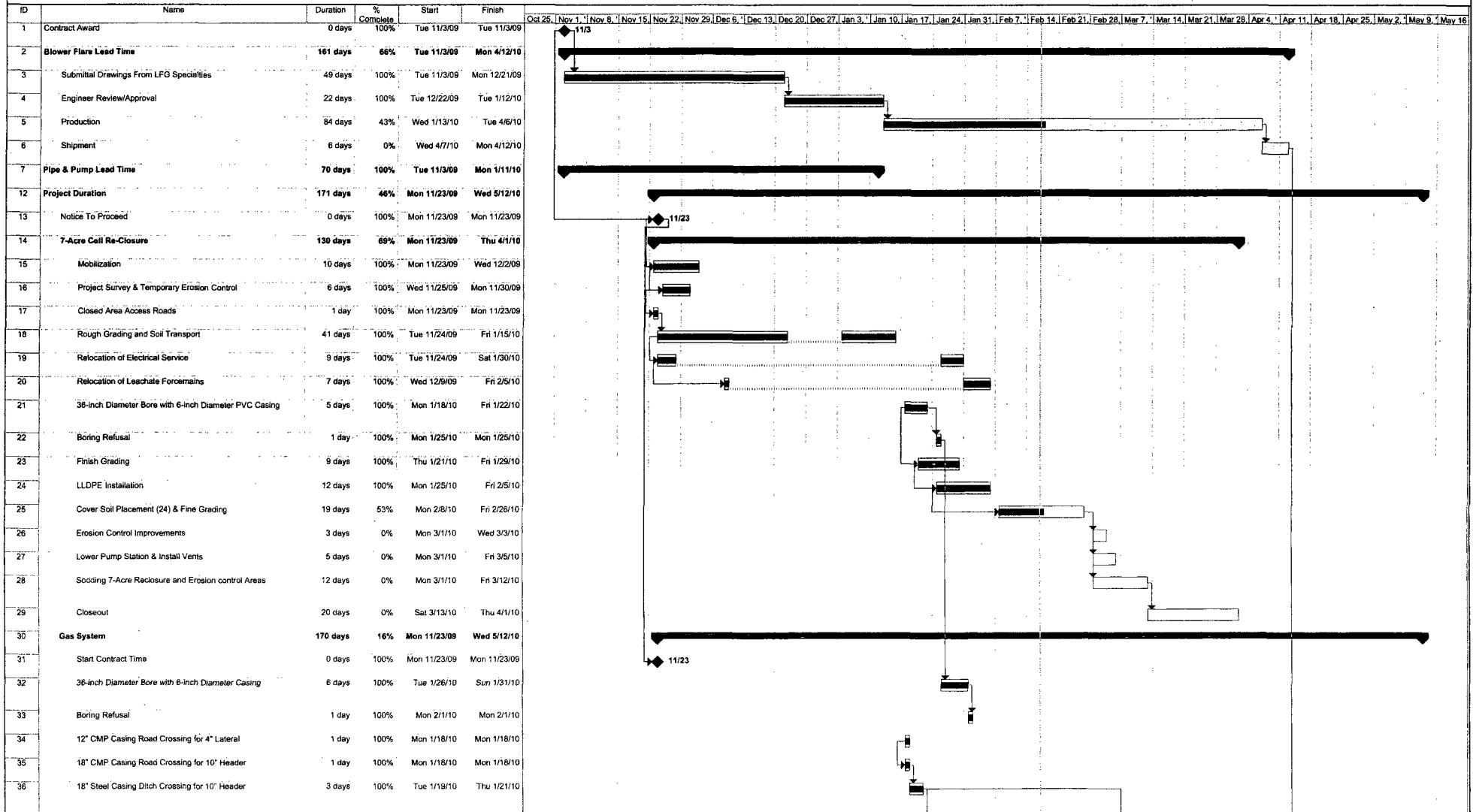
CONSTRUCTION PHOTOGRAPHS

Attachment D includes photographs that are representative of typical construction activities during the month of February.

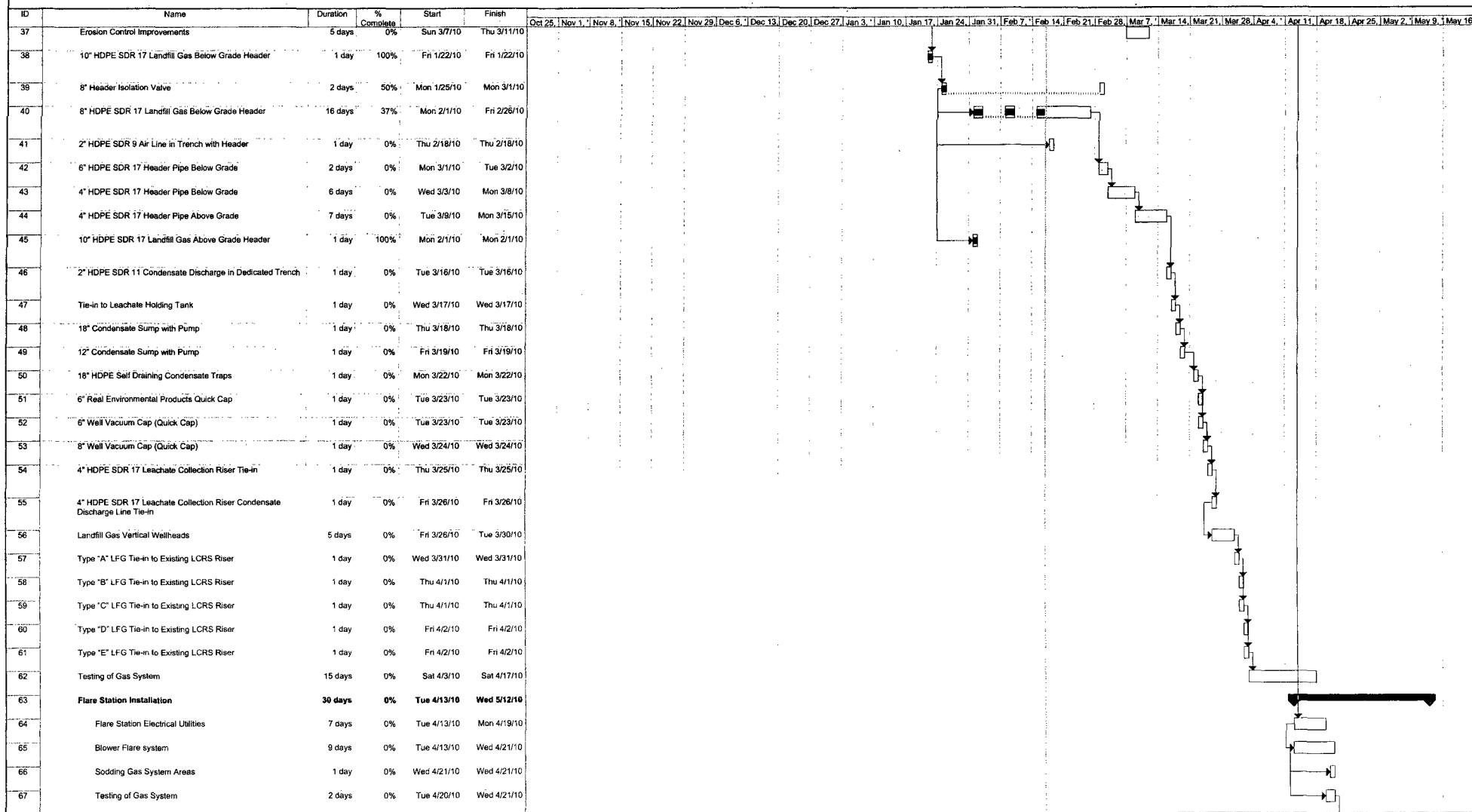


ATTACHMENT A
UPDATED CONTRACTOR SCHEDULE

Citrus County
7-Acre Closed Area Re-Closure & Landfill Gas System Installation
Gantt Chart



Citrus County
7-Acre Closed Area Re-Closure & Landfill Gas System Installation
Gantt Chart



Citrus County
7-Acre Closed Area Re-Closure & Landfill Gas System Installation
Gantt Chart

ID	Name	Duration	% Complete	Start	Finish	Oct 25 Nov 1 Nov 8 Nov 15 Nov 22 Nov 29 Dec 6 Dec 13 Dec 20 Dec 27 Jan 3 Jan 10 Jan 17 Jan 24 Jan 31 Feb 7 Feb 14 Feb 21 Feb 28 Mar 7 Mar 14 Mar 21 Mar 28 Apr 4 Apr 11 Apr 18 Apr 25 May 2 May 9 May 16																								
68	Closeout	21 days	0%	Thu 4/22/10	Wed 5/12/10																									

ATTACHMENT B
SUMMARY OF SUBMITTALS REVIEWED

7-ACRE RE-CLOSURE SUBMITTAL TRACKING LOG

Submittal No.	PRODUCT	Sub-Contractor/ PartSupplier	Actual Submitted Date	Approved Date	Rejected Date	Make Corrections	Resubmitted Date	REMARKS
000000-1	Compressor Shed	Orlando Steel Enterprises	1/1/2010	1/14/2010				
000000-2	Fence Layout	Belair Contracting	1/12/2010	2/3/2010				
000000-3	Chain Link Fencing & Swing gates	Commercial fence Contractors	1/27/2010	2/3/2010				
000000-4	U-Type Endwalls	OldCastle	1/27/2010	2/2/2010				Changed to 24 inch inlet diameter from 18 inch
000000-5	Lift Station Top Slab	OldCastle	2/2/2010	2/10/2010				
000000-6	Lift Station Hatch	U.S.F Fabrication	2/2/2010	2/10/2010				
013010-1	Shop Drawing Submittal Log	Belair Excavating	11/17/2009	11/18/2009				
013010-10	Subcontractors List	Belair Excavating	11/17/2009	11/18/2009				
013010-11	Topographic Map	Belair Excavating	11/25/2009	11/30/2009				
013010-2	Excavation Plan	Belair Excavating	11/17/2009	11/18/2009				
013010-3	Erosion and Pollution Control Plan	Belair Excavating	11/17/2009	11/18/2009				
013010-4	Quality Control Plan	Belair Excavating	11/17/2009	11/18/2009				
013010-5	Maintenance of Traffic Plan	Belair Excavating	11/17/2009	11/18/2009				
013010-6	Health and Safety Plan	Belair Excavating	11/17/2009	11/18/2009		11/30/2009	12/3/2009	Belair Excavating provided additional information per original submittal comments on 12/3/09 that were incorporated into original submittal
013010-7	Documentation of training of Health and Safety Office	Belair Excavating	11/17/2009	11/18/2009				
013010-8	List of Permits and Belair Licenses	Belair Excavating	11/17/2009	11/18/2009				
013010-9	Application of Payment Documents & Schedule of	Belair Excavating	11/17/2009	11/18/2009				
013011-1	Gantt Chart Schedule	Belair Excavation	11/19/2009	12/2/2009				
015000-2	Preliminary Photos and Videos	Aerial Innovations	11/20/2009	12/11/2009				
015000-4	Existing conditions survey- Ladfill gas system layout	BBLS Surveyors and mappers	2/8/2010	2/10/2010				
015000-5	As-Built Survey, Pre- liner installation conditions	BBLS Surveyors and mappers	2/3/2010	2/10/2010				
015000-6	Progress photos start up through 12/10/09	Belair Excavating	2/8/2010	2/10/2010				

7-ACRE RE-CLOSURE SUBMITTAL TRACKING LOG

Submittal No.	PRODUCT	Sub-Contractor/ Part/Supplier	Actual Submitted Date	Approved Date	Rejected Date	Make Corrections	Resubmitted Date	REMARKS
015000-7	Valve Box	Belair Excavating	2/22/2010	3/2/2010				
015000-7	Progress photos 12/11/09 through 12/31/10	Belair Excavating	2/8/2010	2/10/2010				
015000-8	Progress photos 1/1/10 through 1/16/10	Belair Excavating	2/8/2010	2/10/2010				
015000-9	Progress photos 1/17/10 through 1/31/10	Belair Excavating	2/8/2010	2/10/2010				
015055-1	Site Conditions survey-Precon	Belair Excavation sub- BBLs	12/3/2009	12/7/2009				Signed and sealed version
022500-1	Turf Reinforcement Fabric	Propex Landlock	2/17/2010		3/2/2010			
022500-2	Turf Reinforcement Fabric	Erosion Control Blanket	3/5/2010	3/10/2010				
160100-1	Electrical Submittals	Coastal Electrical Contractors	12/14/2009	12/18/2009				
238125-1	Compressed Air System	Grainger	12/14/2009	12/22/2009				
330520-1	Polyethylene Geomembrane Liner	Agri	11/20/2009	1/6/2010				Requested additional information provided 1/5/10 on two type of material to be used.
33.520-2	Polyethylene Geomembrane Liner	Agri	1/9/2010	1/18/2010				Cert. for last seven rolls
332170-1	LFG Extraction Wells	Shaw Environmental	12/10/2009	12/17/2009				
335110-1	Pipe and Pipe Fittings	Ferguson Enterprises	11/30/2009	12/16/2009				Additional information requested 12/7/09
335110-2	Quick Caps	Ferguson Enterprises	1/15/2010	2/2/2010				
335110-3	Electroc Fusion Couplings	Ferguson Enterprises	2/19/2010	3/2/2010				
335110-4	Tubing Clamps		2/25/2010	3/2/2010				
335110-5	Hex Cap Screws		2/26/2010	3/2/2010				
353110-1	Grout Filled Reventment	Fabriform	2/17/2010	3/2/2010				
441120-1	Blower/Flare System - Gas Analyzer	Shaw- LFG Specialties	12/22/2009	1/11/2010				
441120-2	Blower/Flare System - Electrical	Shaw- LFG Specialties	12/22/2009	1/11/2010				Given to Electrical Engineer 1/6/10, returned 1/08/10
441120-3	Blower/Flare System - Mechanical	Shaw- LFG Specialties	12/22/2009	1/11/2010				
444260-1	Condensate Pump	QED	12/1/2009	12/7/2009				

ATTACHMENT C

CONSTRUCTION PROGRESS MEETING SUMMARY REPORTS

February 5, 2010
File No. 09207049.04

**Citrus County 7-Acre Closed Area Re-Closure and Landfill Gas System Construction
Bid No. 070-09
Construction Progress Meeting No. 8 Summary (2/4/10)**

Attendees:

Dan Cooper, SCS Engineers (SCS)
Mike Wimer, Citrus County Public Works Department- Engineering
Gary Sibernagel, Belair Builders (Belair)

The meeting was held at the Citrus County Central Landfill and began at 10:30 AM on Thursday February 4, 2010

8.1 Status of issues from Last Meeting

County Permitting Issues – County wants additional signed and sealed copies of building drawings. Belair will get additional copies and provide to County. Belair also mentioned they will be submitting CO request for electrical utilities extension.

Repairs to Liner around 7-Acre Cell – The area has been walked by Mike and Gary. Right now there have been roughly 78 of the 105 repairs completed and ESI estimates about ½ day of remaining time to complete the repairs.

8.2 Work progress

Since Last meeting.

Final grading of 7-acre cell sub grade in preparation for liner- Grading is complete Belair will touch up just ahead of liner crew as liner is placed.

Liner Installation- Liner installation has commenced following repairs and roughly 1/3 has been installed. Installation was slowed due to inclement weather.

Sodding- DRA#1 completed and roughly 8 acres has been placed in DRA-2

Well drilling is complete and driller has pulled off site.

Header installation- Header installation started at CS-2 with road crossing and ditch crossing completed.

Expected progress-during next work period.

Header installation- Installation will continue north past V-1 and V-2 then up to high point.

Liner Installation- Placement of all liner is expected to be completed by Sunday

Placement of cover soil- Placement of cover soil over liner will begin starting at south end and moving northward. Laborers will be at each soil placement location and will pull out large pieces of old PVC cap from soil and any other objects.

8.3 Field Observations- No items at this time

8.4 Construction Schedule- Belair will check schedule, but noted that extra time was spent locating liner. They will include additional contract time request with change order for extra work associated with liner location.

Belair should have estimated ship date for Blower/Flare skid shortly.

8.5 Coordination of work items with County activities- There is at least one well that will need to be extended shortly. EW-10 will soon be in working face with new lift raising surface elevation roughly 10 feet.

8.6 Shop drawings and other submittals

33 51 10-2 Quick Caps- Approved

00 00 00-3 Fences and Gates- Approved

RFI #4 Humidity Sensor- Ongoing

00 00 00-5 Lift station top slab- In Process

00 00 00-6 Lift Station hatch- In Process

Pay Application #3- Need to call Tim, need to move ditch crossing to proper location

8.7 Record documents – Three sets of photographs are now due as of today. Belair said that all three set are coming this week. Dailies through January 29th have been given to Mike.

8.8 Maintenance of quality standards- All records are being kept in Belair trailer. Any deviations should be tracked on redline set of plans.

Summary – Construction Progress Meeting No. 8
Citrus County 7-Acre Closed Area Re-Closure and Landfill Gas System Construction
February 5, 2010
Page 3

- 8.9 Pending Changes or substitutions – Use of Electrofusion couplings- They are not planning on using any at this time.
- 8.10 Other Business- Cost Estimate for additional work required in locating liner and liner repairs to be submitted.
- 8.11 Next Meeting Date- February 11, 2009, 10:30 AM at Citrus County Central Landfill administration building.

February 12, 2010
File No. 09207049.04

**Citrus County 7-Acre Closed Area Re-Closure and Landfill Gas System Construction
Bid No. 070-09
Construction Progress Meeting No. 9 Summary (2/11/10)**

Attendees:

Casey Stephens, Citrus County Solid Waste Management Division
Dan Cooper, SCS Engineers (SCS)
Glenn McCracken, Mike Wimer and Steve Dixon, Citrus County Public Works Department
Gary Sibernagel, Belair Builders (Belair)

The meeting was held at the Citrus County Central Landfill and began at 10:30 AM on Thursday February 11, 2010

9.1 Status of issues from Last Meeting

County Permitting Issues – Belair submitted to County for permitting and met with Tina, Jim and Mike from permitting. County permitting requested additional copies of the Blower/Flare submittal. Belair will submit extra copies as required and will hopefully get permit soon.

9.2 Work progress

Since Last meeting.

Liner installation was completed Sunday and got the Ok to cover. Belair has placed soil cover on approximately half of the liner so far and is getting gas buildup which needs to be removed. They are planning on using vacuum to evacuate gas from under liner.

All Drilling of gas wells on open area was completed this week and driller has pulled off.

Header installation- Installation of pipe from CS-2 to EW-4 tie in on west side has begun. Trench was left open during rain event and dam was constructed to stop leachate from escaping trench. Belair will assure that all trenches will be closed and/or protected in the future. County will come in behind Belair with mulch and grade cover layer.

Expected progress-during next work period.

Header installation- Belair has brought in additional people and header installation will continue from V-2 towards the East side this week.

Placement of Cover soil over liner- Belair will continue to place cover soil over liner and is expected to be completed by end of next week.

- 9.3 Field Observations- Belair inquired about road crossings and will install CMP and bollards at hurricane road location rather than as shown further north on plans. SCS will look into crossing required for 8 inch header line when new haul road is installed. Bollards will need to be added.
- 9.4 Construction Schedule- The schedule for the reclosure is on schedule, but the gas side is behind. Belair will issue an updated schedule updating all progress within the next week.
- 9.5 Coordination of work items with County activities- Prime with County will work with Belair to remulch disturbed areas. Belair will determine depth of excavations required at EW-8 and CT-1 and make sure that slope can be obtained.
- 9.6 Shop drawings and other submittals
- RFI #4 - Specification for Humidity Sensor- Ongoing.
000000-5 Lift Station top slab - Approved
000000-6 Lift Station hatch - Approved
015000-4 Existing Conditions Survey, Gas System – Approved
015000-5 Survey, Pre-Liner installation – Approved
Pay Application # 3 – In Process
- 9.7 Record documents – Belair is giving dailies to Mike and he is holding for County records in project folder. Photographs for first half of February due this week.
- 9.8 Maintenance of quality standards- All records are being kept in Belair trailer. Any deviations should be tracked on redline set of plans.
- 9.9 Pending Changes or substitutions – Location of 4" above grade header on east side of active site. Move line up hill 20 feet and line will now terminate into 8" crossover header.

- 9.10 Other Business- The ponds are not draining at this time. Siltation of the ponds is suspected as issue, but County wants to see boring logs. SCS will provide to Glenn and Casey the boring logs taken prior to the design of the ponds. Options for the ponds were discussed: 1. cleaning all silt out once grass is in on top of cell. 2. Leaving the pond bottom sand rather than sod. This will be addressed again once project is closer to being finished and ponds are tested by a rain in that situation.
- 9.11 Next Meeting Date- February 18, 2009, 10:30 AM at Citrus County Central Landfill administration building.

February 18, 2010
File No. 09207049.04

**Citrus County 7-Acre Closed Area Re-Closure and Landfill Gas System Construction
Bid No. 070-09
Construction Progress Meeting No. 10 Summary (2/18/10)**

Attendees:

Casey Stephens and Carmen Bruno, Citrus County Solid Waste Management Division
Dan Cooper, SCS Engineers (SCS)
Mike Wimer, Citrus County Public Works Department-Engineering
Gary Sibernagel, Belair Builders (Belair)

The meeting was held at the Citrus County Central Landfill and began at 10:30 AM on Thursday February 18, 2010

10.1 Status of issues from Last Meeting

County Permitting—County has all documents they need they are awaiting OK from Fire Marshall before approving.

Project schedule in relation to Gas System – Belair has provided new schedule with same finish date as original. Schedule meets signed contract dates. There will be no more work on Saturdays or Sundays

10.2 Work progress

Since Last meeting.

Placement of Cover soil over liner- All cover soil will be placed by end of day today and then grading will begin.

Header installation- Installation of pipe from CS-2 to just shy of hurricane road had been completed.

Expected progress-during next work period.

Header installation- Belair will cross hurricane road and proceed towards CT-2 and then go from V-2 towards CS-1 with 8-inch header line.

Cover soil grading should be completed. Belair would like to start on LCRS work once CO is approved.

- 10.3 Field Observations- Belair is working with County on filling sequence to make sure there is enough waste in place in certain areas to get pipe slope and also to make sure that two crews are not working in same area.
- 10.4 Construction Schedule- New schedule has been issued by Belair.

Blower/Flare skid has been schedule for April 7th ship date from LFG Specialties.
- 10.5 Coordination of work items with County activities- The easement for the new power poles has been granted. Carmen distributed copies. Progress Energy can now extend power to back of site.
- 10.6 Shop drawings and other submittals

RFI #4 requesting specification for Humidity Sensor- discussed technical specs with LFG-looks good. LFG to provide cost- Ongoing.
Pay Application #3- In Process with County.
015000-7 Valve Box – In Process
Fabriform and turf reinforcement are on the way.
- 10.7 Record documents – Photos received through end of January. Belair is working on February photos now.
- 10.8 Maintenance of quality standards- All records are being kept in Belair trailer. Any deviations should be tracked on redline set of plans.
- 10.9 Pending Changes or substitutions – SCS and Belair walked above grade 4 inch line last week and Belair understands how all pipes will go into CS-1. There will be 8 inch header above grade near CS-1 where pipe goes over liner. County will need to protect with concrete barriers or other markers.
- 10.10 Other Business- County brought up off road truck at road crossing that are placing soil on cover. They are going too fast across road. Belair needs to provide flagger or they have to stop. County would like to see some little control implemented, possible a laborer to remove trash from header lines. There is erosion on DRA#1 in southeast corner that will need to be addressed. Old concrete is still in place but may not line up anymore. Need to look at topo and evaluate.
- 10.11 Next Meeting Date- February 25, 2009, 10:30 AM at Citrus County Central Landfill administration building.

February 25, 2010
File No. 09207049.04

**Citrus County 7-Acre Closed Area Re-Closure and Landfill Gas System Construction
Bid No. 070-09
Construction Progress Meeting No. 11 Summary (2/25/10)**

Attendees:

Casey Stephens, Citrus County Solid Waste Management Division
Dan Cooper, SCS Engineers (SCS)
Mike Wimer, Citrus County Public Works Department-Engineering
Gary Sibernagel (via Telephone), Belair Builders (Belair)

The meeting was held at the Citrus County Central Landfill and began at 10:30 AM on Thursday February 25, 2010

11.1 Status of issues from Last Meeting

County fill sequence- Belair has crossed over to eastside of landfill operations and is now ahead of filling. Laterals will go in and then wells will be extended before filling encounters wells.

Weekend Work- Belair will inform SCS if any work is to be conducted on weekends. No work that requires CQA will be conducted.

11.2 Work progress

Since Last meeting.

Placement of Cover soil over liner- All cover soil has been placed and liner cuts made to relieve gas buildup have been repaired.

Header installation- Installation of 8 inch header to CS-1 is almost completed. All lateral runs into line were made during header installation.

Belair installed new explosion proof box on electrical run from LCRS' to power source as they were all rusted out.

Expected progress-during next work period.

Header installation- Belair will tie in to CT-1 with header pipe. This tie in is deep due to depth CT-1 was drilled.

Electrical work on LCRS- Electrical connection will be tie to concrete pipes and trench installed to run conduit for power supply.

LCRS modifications- Plan to start cutting concrete to lower risers next week.

- 11.3 Field Observations- SCS mentioned that CT-1 would have to be raised with 18 inch spool piece. Belair will perform work and County will observe. Belair will provide cost to County for work.

- 11.4 Construction Schedule- New schedule has been issued by Belair and they are on that schedule.

Blower/Flare skid has been schedule for April 7th ship date from LFG Specialties.

- 11.5 Coordination of work items with County activities- Belair needs to seal up open trenches. Polycote required to coat valves before burying is on the way.

- 11.6 Shop drawings and other submittals

RFI #4 requesting specification for Humidity Sensor- discussed technical specs with LFG-looks good. Cost of sensor is 7K. Belair to deliver to SCS and then recommendation will be made - Ongoing.

Pay Application #3- In Process with County.

015000-7 Revised Valve Box – Approved

335119-1 Fabriform- In process looks good.

022500-1 Propex Landlock turf reinforcement- In process may not be equal.

Electrofusion couplings- Materials OK. Will be used for LCRS extensions and only as approved by engineer.

- 11.7 Record documents – Photos received through end of January. SCS is awaiting February photos.

- 11.8 Maintenance of quality standards- All records are being kept in Belair trailer. Any deviations should be tracked on redline set of plans.

- 11.9 Pending Changes or substitutions – Location of 4-inch above grade header is OK. This will tie-in to 8 inch header now.

- 11.10 Other Business- RFCO # 2. Need to get processed. Also cost of repairs and payment responsibility was discussed. County will review and data and get back to Belair.

Summary – Construction Progress Meeting No. 11
Citrus County 7-Acre Closed Area Re-Closure and Landfill Gas System Construction
February 25, 2010
Page 3

11.11 Next Meeting Date- March 4, 2010, 10:30 AM at Citrus County Central Landfill
administration building.

ATTACHMENT D
PHOTOGRAPHS

Photograph Number 1



Date: February 8, 2010 **Site:** Phase I / IA & 2 GCCS Construction, Citrus County, Florida
Description: Tee at V-1 and V-2 with flanges before valves were added.

Photograph Number 2



Date: February 10, 2010 **Site:** Phase I / IA & 2 GCCS Construction, Citrus County, Florida
Description: LFG riser installed into 8" header.

Photograph Number 3



Date: February 10, 2010 **Site:** Phase I / IA & 2 GCCS Construction, Citrus County, Florida
Description: Backfilling trench over LFG header (note: warning tape over pipe).

Photograph Number 4



Date: February 11, 2010 **Site:** Phase I / IA & 2 GCCS Construction, Citrus County, Florida
Description: Installation of 8" header pipe along south slope.

Photograph Number 5



Date: February 15, 2010 **Site:** Phase I / IA & 2 GCCS Construction, Citrus County, Florida
Description: 8" tee to 6" lateral pipe to EW-1 ready for backfilling.

Photograph Number 6



Date: February 16, 2010 **Site:** Phase I / IA & 2 GCCS Construction, Citrus County, Florida
Description: Valve V-2 placed. Awaiting coating and film cover.

Photograph Number 7



Date: February 16, 2010 **Site:** Phase I / IA & 2 GCCS Construction, Citrus County, Florida
Description: Wye to EW-3 installed in header line.

Photograph Number 8



Date: February 17, 2010 **Site:** Phase I / IA & 2 GCCS Construction, Citrus County, Florida
Description: Installation of 8" header from high point to CS-1.

Photograph Number 9



Date: February 25, 2010 **Site:** Phase I / IA & 2 GCCS Construction, Citrus County, Florida
Description: Installation of downslope lateral to EW-10.

Photograph Number 10



Date: February 26, 2010 **Site:** Phase I / IA & 2 GCCS Construction, Citrus County, Florida
Description: CS-1 placed in ground awaiting connections.

SCS ENGINEERS

April 15, 2010
File No. 09207049.04

Ms. Susan J. Pelz, P.E.
Solid Waste Management
Florida Department of Environmental Protection
13051 N. Telecom Parkway
Temple Terrace, Florida 33637-0926

Subject: Monthly Summary of Construction – March 2010
Citrus County Central Class I Landfill Phase 1/1A & 2 Gas Collection and
Control System Construction
Citrus County, Florida
Permit No. 21375-017-SC/08

Dept. of Environmental
Protection
APR 15 2010
Southwest District

Dear Susan:

On behalf of the Citrus County Solid Waste Management Division (SWMD), SCS Engineers (SCS) is submitting the fifth monthly progress report for the Phase 1/1A & 2 Gas Collection and Control System Construction Project as required under Specific Condition Part B, Item 5.b. of construction permit no. 21375-017-SC/08. As required by the permit conditions, the monthly progress report includes the following:

1. A narrative explaining the status and any delays of major stages in the construction.
2. A summary of submittals and change order requests.
3. Weekly progress meeting summaries.
4. Color copies of photographs which are representative of the typical construction activities for the reporting period, and photographs which show overall views and details of major stages of construction.

Please call us if you have any questions.

Sincerely,



Daniel R. Cooper, P.E.
Project Manager
SCS ENGINEERS



C. Ed Hilton, P.E.
Vice President
SCS ENGINEERS

cc: Casey Stephens, SWMD

Enclosure



SCS ENGINEERS

April 15, 2010
File No. 09207049.04

Phase 1/1A & 2 Gas Collection and Control System Construction BID No. 070-09, Permit No. 21375-017-SC/08 Monthly Progress Report No. 5 (March 2010)

On behalf of the Citrus County Solid Waste Management Division (SWMD), SCS Engineers (SCS) has prepared the following monthly summary of the construction activities conducted for the above referenced project from March 1, 2010 through March 31, 2010.

PROJECT OVERVIEW

Work in March included the following:

- Completed Installation of all LFG Header lines.
- Completed Installation of all LFG lateral lines to extraction wells.
- Completed installation of all condensate traps and sumps.
- Performed pressure testing on installed piping.
- Began Tie-in to leachate cleanout risers.

PROJECT SCHEDULE

An update Contractor's construction schedule issued on March 25, 2010 is provided in Attachment A.

SUMMARY OF SUBMITTALS/CHANGE ORDERS

The summary list of submittals reviewed to-date by SCS for the project is provided in Attachment B.

CONSTRUCTION PROGRESS MEETING SUMMARY REPORTS

Attachment C contains the summary of the progress meetings that were held during the month of March.

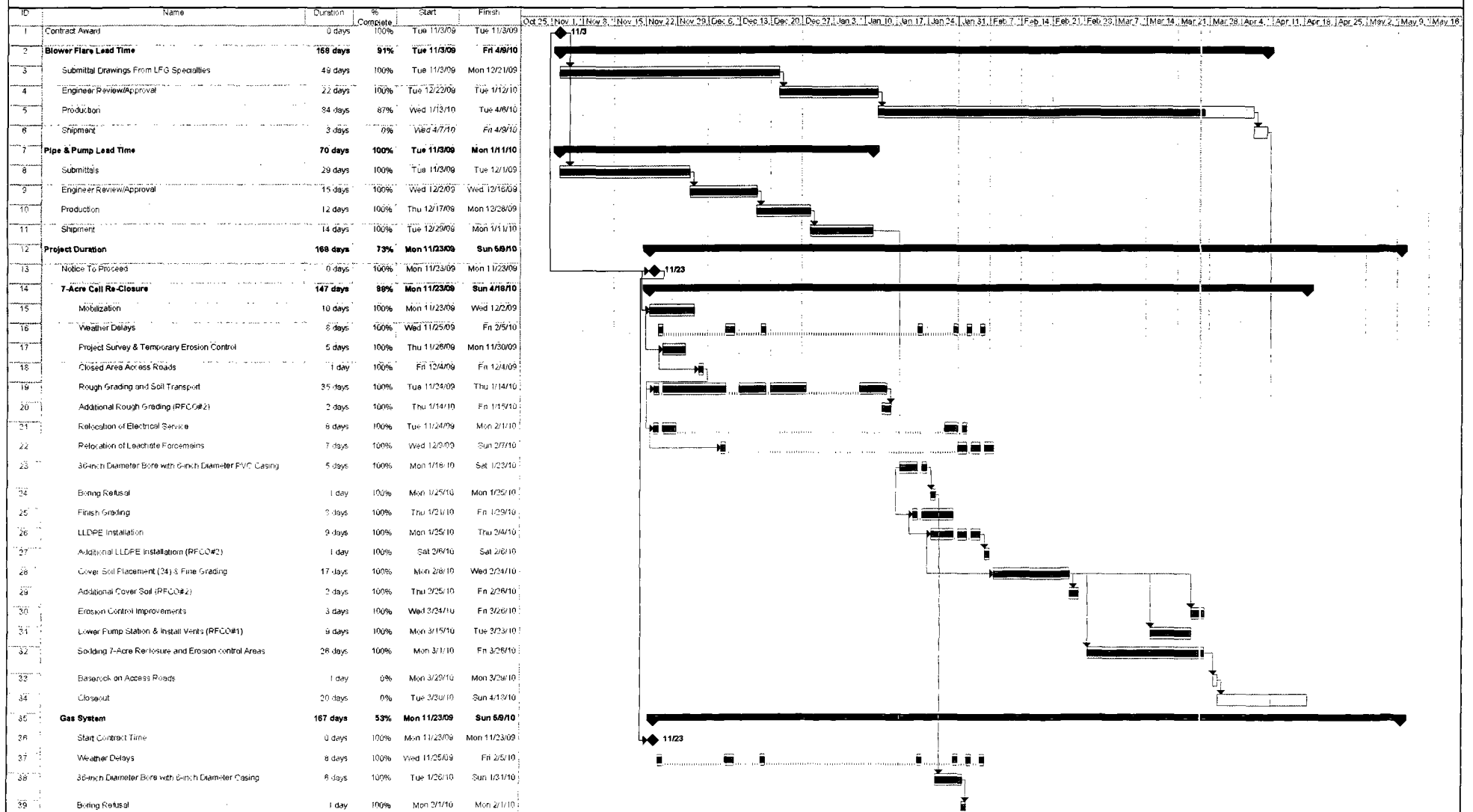
CONSTRUCTION PHOTOGRAPHS

Attachment D includes photographs that are representative of typical construction activities during the month of March.

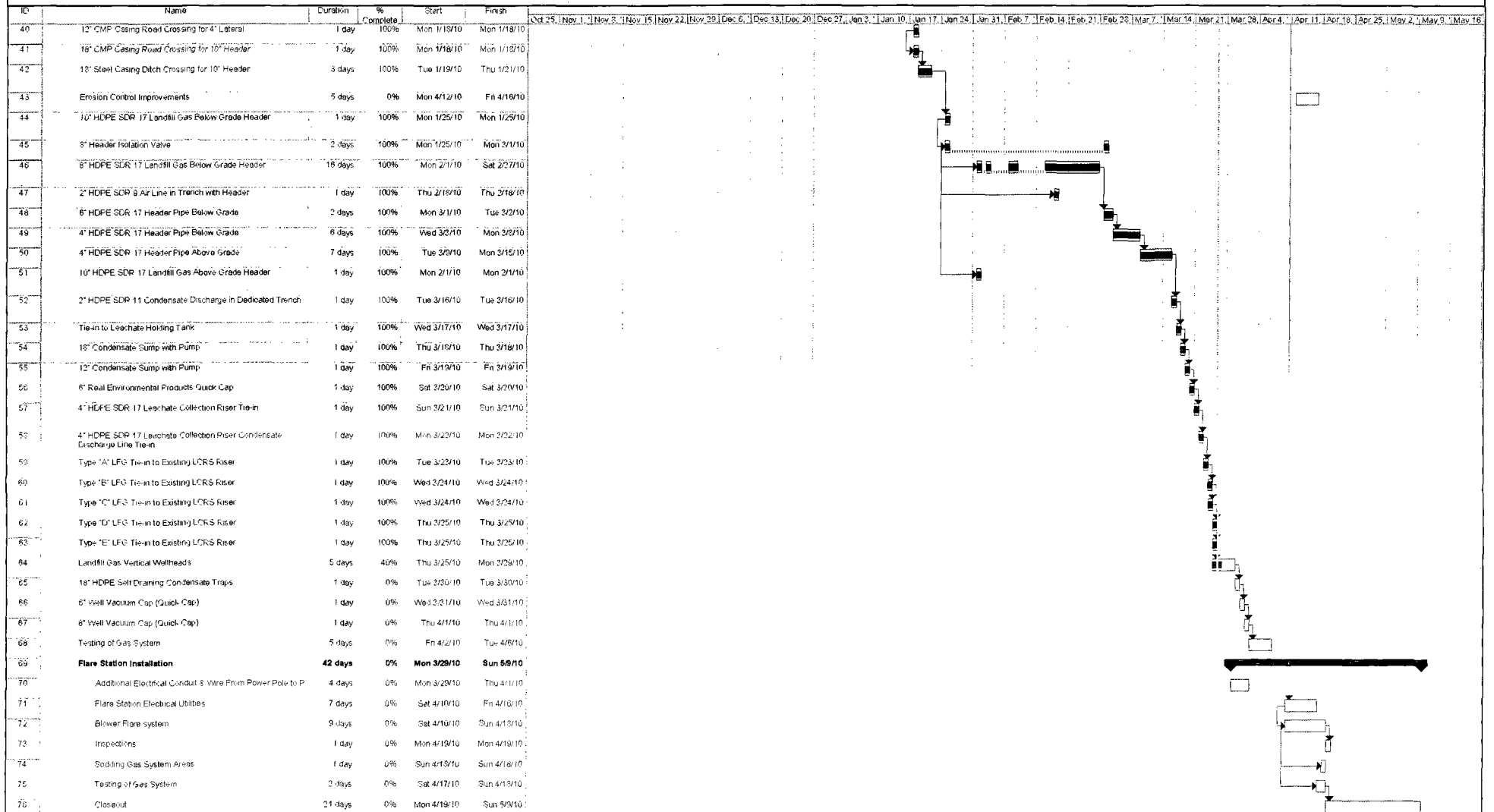


ATTACHMENT A
UPDATED CONTRACTOR SCHEDULE

Citrus County 7-Acre Closed Area Re-Closure & Landfill Gas System Installation Gantt Chart



Citrus County 7-Acre Closed Area Re-Closure & Landfill Gas System Installation Gantt Chart



ATTACHMENT B
SUMMARY OF SUBMITTALS REVIEWED

7-ACRE RE-CLOSURE SUBMITTAL TRACKING LOG

Submittal No.	PRODUCT	Sub-Contractor/ PartSupplier	Actual Submitted Date	Approved Date	Rejected Date	Make Corrections	Resubmitted Date	REMARKS
000000-1	Compressor Shed	Orlando Steel Enterprises	1/1/2010	1/14/2010				
000000-2	Fence Layout	Belair Contracting	1/12/2010	2/3/2010				
000000-3	Chain Link Fencing & Swing gates	Commercial fence Contractors	1/27/2010	2/3/2010				
000000-4	U-Type Endwalls	OldCastle	1/27/2010	2/2/2010				Changed to 24 inch inlet diameter from 18 inch
000000-5	Lift Station Top Slab	OldCastle	2/2/2010	2/10/2010				
000000-6	Lift Station Hatch	U.S.F Fabrication	2/2/2010	2/10/2010				
013010-1	Shop Drawing Submittal Log	Belair Excavating	11/17/2009	11/18/2009				
013010-10	Subcontractors List	Belair Excavating	11/17/2009	11/18/2009				
013010-11	Topographic Map	Belair Excavating	11/25/2009	11/30/2009				
013010-2	Excavation Plan	Belair Excavating	11/17/2009	11/18/2009				
013010-3	Erosion and Pollution Control Plan	Belair Excavating	11/17/2009	11/18/2009				
013010-4	Quality Control Plan	Belair Excavating	11/17/2009	11/18/2009				
013010-5	Maintenance of Traffic Plan	Belair Excavating	11/17/2009	11/18/2009				
013010-6	Health and Safety Plan	Belair Excavating	11/17/2009	11/18/2009		11/30/2009	12/3/2009	Belair Excavating provided additional information per original submittal comments on 12/3/09 that were incorporated into original submittal
013010-7	Documentation of training of Health and Safety Office	Belair Excavating	11/17/2009	11/18/2009				
013010-8	List of Permits and Belair Licenses	Belair Excavating	11/17/2009	11/18/2009				
013010-9	Application of Payment Documents & Schedule of	Belair Excavating	11/17/2009	11/18/2009				
013011-1	Gantt Chart Schedule	Belair Excavation	11/19/2009	12/2/2009				
015000-2	Preliminary Photos and Videos	Aerial Innovations	11/20/2009	12/11/2009				
015000-4	Existing conditions survey- Ladfill gas system layout	BBLS Surveyors and mappers	2/8/2010	2/10/2010				
015000-5	As-Built Survey, Pre- liner installation conditions	BBLS Surveyors and mappers	2/3/2010	2/10/2010				
015000-6	Progress photos start up through 12/10/09	Belair Excavating	2/8/2010	2/10/2010				
015000-7	Valve Box	Belair Excavating	2/22/2010	3/2/2010				
015000-7	Progress photos 12/11/09 through 12/31/10	Belair Excavating	2/8/2010	2/10/2010				
015000-8	Progress photos 1/1/10 through 1/16/10	Belair Excavating	2/8/2010	2/10/2010				
015000-9	Progress photos 1/17/10 through 1/31/10	Belair Excavating	2/8/2010	2/10/2010				

7-ACRE RE-CLOSURE SUBMITTAL TRACKING LOG

Submittal No.	PRODUCT	Sub-Contractor/ PartSupplier	Actual Submitted Date	Approved Date	Rejected Date	Make Corrections	Resubmitted Date	REMARKS
015055-1	Site Conditions survey-Precon	Belair Excavation sub- BBLs	12/3/2009	12/7/2009				Signed and sealed version
022500-1	Turf Reinforcement Fabric	Propex Landlock	2/17/2010		3/2/2010			
022500-2	Turf Reinforcement Fabric	Erosion Control Blanket	3/5/2010	3/10/2010				
160100-1	Electrical Submittals	Coastal Electrical Contractors	12/14/2009	12/18/2009				
238125-1	Compressed Air System	Grainger	12/14/2009	12/22/2009				
330520-1	Polyethylene Geomembrane Liner	Agru	11/20/2009	1/6/2010				Requested additional information provided 1/5/10 on two type of material to be used.
33.520-2	Polyethylene Geomembrane Liner	Agru	1/9/2010	1/18/2010				Cert. for last seven rolls
332170-1	LFG Extraction Wells	Shaw Environmental	12/10/2009	12/17/2009				
335110-1	Pipe and Pipe Fittings	Ferguson Enterprises	11/30/2009	12/16/2009				Additional information requested 12/7/09
335110-2	Quick Caps	Ferguson Enterprises	1/15/2010	2/2/2010				
335110-3	Electroc Fusion Couplings	Ferguson Enterprises	2/19/2010	3/2/2010				
335110-4	Tubing Clamps		2/25/2010	3/2/2010				
335110-5	Hex Cap Screws		2/26/2010	3/2/2010				
335110-6	Botl Coating	Custom Fab	4/3/2010	4/6/2010				
335110-7	PTFE Hose	Swagelock	4/5/2010	4/6/2010				
353110-1	Grout Filled Reventment	Fabriform	2/17/2010	3/2/2010				
441120-1	Blower/Flare System - Gas Analyzer	Shaw- LFG Specialties	12/22/2009	1/11/2010				
441120-2	Blower/Flare System - Electrical	Shaw- LFG Specialties	12/22/2009	1/11/2010				Given to Eletrical Engineer 1/6/10, returned 1/08/10
441120-3	Blower/Flare System - Mechanical	Shaw- LFG Specialties	12/22/2009	1/11/2010				
444260-1	Condensate Pump	QED	12/1/2009	12/7/2009				

ATTACHMENT C
CONSTRUCTION PROGRESS MEETING SUMMARY REPORTS

March 4, 2010
File No. 09207049.04

**Citrus County 7-Acre Closed Area Re-Closure and Landfill Gas System Construction
Bid No. 070-09
Construction Progress Meeting No. 12 Summary (3/4/10)**

Attendees:

Casey Stephens, Citrus County Solid Waste Management Division
Dan Cooper, SCS Engineers (SCS)
Mike Wimer, Citrus County Public Works Department-Engineering
Gary Sibernagel, Belair Builders (Belair)

The meeting was held at the Citrus County Central Landfill and began at 10:30 AM on Thursday March 4, 2010

12.1 Status of issues from Last Meeting

Progress Energy Power Extension – Terry Bishop from Progress Energy is on site today and will determine schedule for extending power.

Belair has received Permits from County and is all set.

12.2 Work progress

Since Last meeting.

Sod Placement- South Slope is completed, they will now head on top of liner and move north. Should be completed in approximately another week.

Header/pipe installation- CT-2 is being set today and CS-2 has been set.

Electrical work on Leachate risers continuing trenching for electrical conduit to LCRS on Monday prior to sod placement. Boxes by LCRS are good to re use. New box was placed near fence of leachate plant at tie-in.

Expected progress-during next work period.

Gas system components installation- 4" above grade header to be installed next week. Belair to determine spool piece length required for CT-1 and order.

Lowering LCRS down.

SCS suggested starting air testing at least in working face area in case something fails.

- 12.3 Field Observations- Need to determine if filling in around CS-1 is needed to cover/protect pipe.
- 12.4 Construction Schedule- New schedule has been issued by Belair and they are on that schedule. Pipe to be completed by end of month.

Blower/Flare skid has been schedule for April 7th ship date from LFG Specialties.

- 12.5 Coordination of work items with County activities- County to coordinate with Progress Energy to get power extension planned.
- 12.6 Shop drawings and other submittals

RFI #4 requesting specification for Humidity Sensor- SCS will review feasibility and let Belair know if desired.

015000-7 Revised Valve Box – Approved

335119-1 Fabriform- Approved.

022500-1 Propex Landlock turf reinforcement- Rejected-needs to be resubmitted.

335110-3 Electrofusion couplings- Approved. Use only as approve by Engineer.

335110-4 Tubing Clamps- Approved

335110-5 Hex Cap Screws - Approved

- 12.7 Record documents – Photos received through end of January. SCS is awaiting February photos. Tim will send to be through end of February this week.
- 12.8 Maintenance of quality standards- All records are being kept in Belair trailer. Any deviations should be tracked on redline set of plans.
- 12.9 Pending Changes or substitutions – Location of 4-inch above grade header is to be moved 20 feet west and will tie-in to 8 inch header.
- 12.10 Other Business- RFCO # 2 Additional work required in locating liner, additional hauling and surveying- In Process.

RFCO # 3 Electrical Extension beyond where progress Energy will stop

- 12.11 Next Meeting Date- March 11, 2010, 10:30 AM at Citrus County Central Landfill administration building.

March 11, 2010
File No. 09207049.04

**Citrus County 7-Acre Closed Area Re-Closure and Landfill Gas System Construction
Bid No. 070-09
Construction Progress Meeting No. 13 Summary (3/11/10)**

Attendees:

Casey Stephens and Carmen Bruno, Citrus County Solid Waste Management Division
Dan Cooper, SCS Engineers (SCS)
Mike Wimer, Citrus County Public Works Department-Engineering
Gary Sibernagel, Belair Builders (Belair)

The meeting was held at the Citrus County Central Landfill and began at 10:30 AM on Thursday March 11, 2010

13.1 Status of issues from Last Meeting

Progress Energy Power Extension – Carmen will follow up with Progress Energy to get installation date. Coastal Electric (Belair sub) will also contact Progress to determine when they can start work.

13.2 Work progress

Since Last meeting.

Sod Placement- Sod place is roughly 75 percent complete on closed area and should be completed within a week.

Header/pipe installation- All trenched pipe is in place. Above grade 4 "pipe is in place. Air testing will start next week.

Electrical work on Leachate risers has been completed and everything was operational yesterday. Inspection was conducted and passed.

Cutting Down of leachate risers – First cut was attempted, but company was not comfortable with work, so they are regrouping and coming back Monday.

Expected progress-during next work period.

Gas system components installation- Pressure testing and tie-ins to LCRS to be conducted. Cap diameter issues were discussed. 24 inch risers are O.K. 18" risers – Caps are too big, may be able to be retrofitted.

Sod Placement – Once turf reinforcement arrives then north slope sod will be placed.

- 13.3 Field Observations - Access roads to closed area has 12 inches of base in place. Belair to add 6-inches of crushed concrete to these roads and road into DRA #2.

Building color was discussed – Casey OK'd tan as the color of the building.

- 13.4 Construction Schedule – Closure should be completed within two weeks. All piping to be completed by the end of the month.

Blower/Flare skid has been schedule for April 7th ship date from LFG Specialties.

- 13.5 Coordination of work items with County activities- Belair Is getting quote on spool piece to extend CT-1. EW-6 needs to be extended. Belair cannot extend 6 inch HDPE will use eletrofusion coupling the extend pipe vertically.

- 13.6 Shop drawings and other submittals

RFI #4 requesting specification for Humidity Sensor- SCS will review feasibility and let Belair know if desired.

022500-1 Propex Landlock - Rejected-needs to be resubmitted.

022500-2 Turf Reinforcement Mat- Approved.

- 13.7 Record documents – Photos received through end of February.

- 13.8 Maintenance of quality standards- All records are being kept in Belair trailer. Any deviations should be tracked on redline set of plans.

- 13.9 Pending Changes or substitutions – Determination on LCRS caps for 18 inch riser pipes.

- 13.10 Other Business- RFCO # 2 Additional work required in locating liner, additional hauling and surveying- Completed recommendation to County.
RFCO # 3 Electrical Extension beyond where progress Energy will stop- In Process
RFCOP #4 Liner repairs – Completed recommendation to County.

- 13.11 Next Meeting Date- March 18, 2010, 10:30 AM at Citrus County Central Landfill administration building.

March 18, 2010
File No. 09207049.04

**Citrus County 7-Acre Closed Area Re-Closure and Landfill Gas System Construction
Bid No. 070-09
Construction Progress Meeting No. 14 Summary (3/18/10)**

Attendees:

Casey Stephens, Citrus County Solid Waste Management Division
Dan Cooper, SCS Engineers (SCS)
Mike Wimer, Citrus County Public Works Department-Engineering
Gary Sibernagel, Belair Builders (Belair)

The meeting was held at the Citrus County Central Landfill and began at 10:30 AM on Thursday March 18, 2010

14.1 Status of issues from Last Meeting

Progress Energy Power Extension – Progress Energy will have power extended by March 25th.

Storm Repairs- Site received several inches of rain and there was significant erosion damage to some of the new work. Belair will begin moving dirt that washed into ponds back onto the slope this week. ESI Liner sub will be onsite early next week to repair liner that will have to be cut to release trapped gas.

Extension of wells close to or in working face – Wells that can be raised are complete (PVC and 4-inch risers). Belair was authorized to use 6 –inch HDPE coupling to raise remaining wells. Belair will keep a running tally of work performed for final CO.

14.2 Work progress

Since Last meeting.

Sod Placement- Sod placement stopped last Thursday after storm and will be restarted after storm repairs.

LCRS Tie-ins for gas system – Belair is currently drilling additional holes to mount and seal blind flanges on 24 inch pipes.

Cutting Down of leachate risers – Risers have been cut. New top is due next Tuesday. Tops will be lowered and reattached next week then wiring will commence.

Expected progress-during next work period.

Header/lateral pressure testing – pressure testing will start on 3-22.

LCRS Tie-ins for gas system – Belair is will continue on west side then move to east side.

- 14.3 Field Observations – Prime requested wells being extended on 3-16. Belair extended all wells in working area and will continue to do so as requested.

- 14.4 Construction Schedule – Closure schedule was significantly impacted by storm and may not be completed by end of month. Belair will request rain days. Gas system components except flare are still on schedule for the end of the month.

Blower/Flare skid has been schedule for April 7th ship date from LFG Specialties.

Need to start stormwater work above DRA-5 – SCS will review pond height today and Belair will have surveyor provide water surface elevation (94 feet on 3-18-10)

- 14.5 Coordination of work items with County activities- Everything Ok at this time.

- 14.6 Shop drawings and other submittals

RFI #4 requesting specification for Humidity Sensor- Awaiting determination- hold off for now.

RFI # 5 – CT- 2 condensate line connection – saddle onto CT-2 for 2 inch HDPE line is OK.

RFI # 6 – Access road surfacing – Belair to place 6 inches of crushed concrete (pending material review) over three access roads and leave like this without sod.
022500-2 Turf Reinforcement Mat- Approved.

Pay Application #4 SCS OK'd and delivered to County.

- 14.7 Record documents – Photos received through end of February. Next photos to cover thought March 15. SCS mentioned that all dailies need to be brought up to date. Belair will get them to Mike or SCS.

- 14.8 Maintenance of quality standards- All records are being kept in Belair trailer. Any deviations should be tracked on redline set of plans.

Summary – Construction Progress Meeting No. 14
Citrus County 7-Acre Closed Area Re-Closure and Landfill Gas System Construction
March 18, 2010
Page 3

- 14.9 Pending Changes or substitutions – Determination on LCRS caps for 18 inch riser pipes.
- 14.10 Other Business-
 - 14.10.1 RFCO # 2 Additional work required in locating liner, additional hauling and surveying- Completed recommendation to County.
 - 14.10.2 RFCO # 3 Electrical Extension beyond where progress Energy will stop- Belair to prove cost back up for Item 1.
 - 14.10.3 RFCO #4 Liner repairs – Completed New RFCO provided with agreed upon value.
- 14.11 Next Meeting Date- March 25, 2010, 10:30 AM at Citrus County Central Landfill administration building.

March 25, 2010
File No. 09207049.04

**Citrus County 7-Acre Closed Area Re-Closure and Landfill Gas System Construction
Bid No. 070-09
Construction Progress Meeting No. 15 Summary (3/25/10)**

Attendees:

Casey Stephens, Citrus County Solid Waste Management Division
Dan Cooper, SCS Engineers (SCS)
Mike Wimer and Steve Dixon, Citrus County Public Works Department-Engineering
Gary Sibernagel, Belair Builders (Belair)

The meeting was held at the Citrus County Central Landfill and began at 10:30 AM on Thursday March 25, 2010

15.1 Status of issues from Last Meeting

Progress Energy- Power Extension will be completed today. Coastal Electric (Belair sub) will extend electrical service beginning today, should be completed early next week.

Stormwater System work on DRA- 5 - More rain has raised water level. Belair will check with subcontractor and see what they think. We will wait another week to see what water level does.

15.2 Work progress

Since Last meeting.

Grading of washouts and new Sod Placement- 7-acre area is Re-graded and fabric in on the way. Belair is preparing for additional rain by protecting newly placed soils.

LCRS Tie-ins for gas system – Tie-in are complete except for two on east side, which need 50 foot suction pipes.

Pressure testing has been conducted and all sections tested have passed.

Cutting Down of leachate risers – Risers have been cut and new tops placed. Electrical work is in progress.

Expected progress-during next work period.

Sod Placement – Once turf reinforcement arrives then all sod will be completed- hopefully within one week.

Electrical work on leachate risers – Work should be completed within a week and systems back up and running.

Repairs in stormwater ponds DRA-1 and DRA-2 – We will wait until ponds are dry and then determine best course of action.

15.3 Field Observations – SCS to take a look at pond damage and see what options are with Belair.

15.4 Construction Schedule – New schedule was issued yesterday to account for rain delays and updated information on flare.

Blower/Flare skid has been schedule for April 9th arrival date. Belair will arrange for crane to off load flare upon arrival.

15.5 Coordination of work items with County activities- Belair will coordinate with Prime to add spool piece to CT-1. Belair is aware or required County electrical inspections and will coordinate with electrical sub and progress energy.

15.6 Shop drawings and other submittals

RFI #4 requesting specification for Humidity Sensor- holding off- will not be on skid.
RFI # 6 – Access road surfacing – Approved Belair to place 6 inches of crushed concrete over three access roads and leave like this without sod.

15.7 Record documents – Photos through mid march to ship this week. Belair needs to bring dailies up to date.

15.8 Maintenance of quality standards- All records are being kept in Belair trailer. Any deviations should be tracked on redline set of plans.

15.9 Pending Changes or substitutions – Determination on LCRS caps for 18 inch riser pipes.

Summary – Construction Progress Meeting No. 15
Citrus County 7-Acre Closed Area Re-Closure and Landfill Gas System Construction
March 25, 2010
Page 3

15.10 Other Business-

RFCO #1,#2,#3, #4- All four COs to be added on next pay application and by the time pay application is processed, BOCC should have approved. Casey to put together required paperwork and get items onto agenda for April 12 meeting.

15.11 Next Meeting Date- April 1, 2010, 10:30 AM at Citrus County Central Landfill administration building.

Photograph Number 1



Date: March 1, 2010 **Site:** Phase I / IA & 2 GCCS Construction, Citrus County, Florida
Description: Installation of CS-1.

Photograph Number 2



Date: March 1, 2010 **Site:** Phase I / IA & 2 GCCS Construction, Citrus County, Florida
Description: Placement of header pipe from CS-1 to north.

Photograph Number 3



Date: March 2, 2010

Site: Phase I / IA & 2 GCCS Construction, Citrus County, Florida

Description: Installation of CT-1.

Photograph Number 4



Date: March 3, 2010

Site: Phase I / IA & 2 GCCS Construction, Citrus County, Florida

Description: Installation of lateral to EW-10.

Photograph Number 5



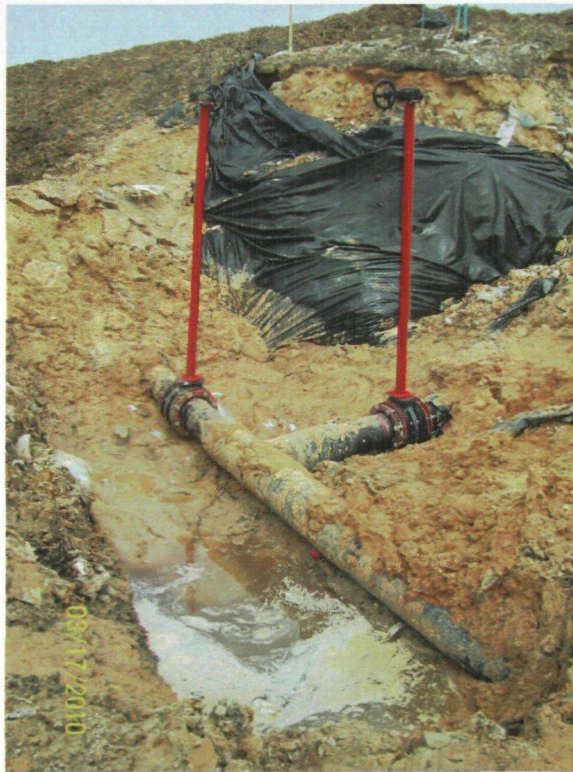
Date: March 4, 2010 **Site:** Phase I / IA & 2 GCCS Construction, Citrus County, Florida
Description: Installation of CT-2.

Photograph Number 6



Date: March 17, 2010 **Site:** Phase I / IA & 2 GCCS Construction, Citrus County, Florida
Description: CS-2 installed and awaiting backfill.

Photograph Number 7



Date: March 17, 2010

Site: Phase I / IA & 2 GCCS Construction, Citrus County, Florida

Description: Valve extensions installed on V-1 and V-2 before backfilling.

Photograph Number 8



Date: March 17, 2010

Site: Phase I / IA & 2 GCCS Construction, Citrus County, Florida

Description: Above grade 4" lateral installed along east side.

Photograph Number 9



Date: March 19, 2010

Site: Phase I / IA & 2 GCCS Construction, Citrus County, Florida

Description: Welding timesaver valve onto leachate cleanout.

Photograph Number 10



Date: March 22, 2010

Site: Phase I / IA & 2 GCCS Construction, Citrus County, Florida

Description: Pressure test rig mounted onto system for testing.

Photograph Number 11



Date: March 25, 2010

Site: Phase I / IA & 2 GCCS Construction, Citrus County, Florida

Description: Placement of new leachate cleanout tie-in with 50 foot vacuum pipe.

SCS ENGINEERS

May 14, 2010
File No. 09207049.04

Ms. Susan J. Pelz, P.E.
Solid Waste Management
Florida Department of Environmental Protection
13051 N. Telecom Parkway
Temple Terrace, Florida 33637-0926

Dept. Of Environmental Protection
MAY 14 2010
Southwest District

Subject: Monthly Summary of Construction – April 2010
Citrus County Central Class I Landfill Phase 1/1A & 2 Gas Collection and
Control System Construction
Citrus County, Florida
Permit No. 21375-017-SC/08

Dear Susan:

On behalf of the Citrus County Solid Waste Management Division (SWMD), SCS Engineers (SCS) is submitting the sixth monthly progress report for the Phase 1/1A & 2 Gas Collection and Control System Construction Project as required under Specific Condition Part B, Item 5.b. of construction permit no. 21375-017-SC/08. As required by the permit conditions, the monthly progress report includes the following:

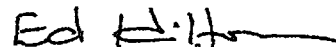
1. A narrative explaining the status and any delays of major stages in the construction.
2. A summary of submittals and change order requests.
3. Weekly progress meeting summaries.
4. Color copies of photographs which are representative of the typical construction activities for the reporting period, and photographs which show overall views and details of major stages of construction.

Please call us if you have any questions.

Sincerely,



Daniel R. Cooper, P.E.
Project Manager
SCS ENGINEERS



C. Ed Hilton, P.E.
Vice President
SCS ENGINEERS

cc: Casey Stephens, SWMD

Enclosure



SCS ENGINEERS

May 14, 2010
File No. 09207049.04

**Phase 1/1A & 2 Gas Collection and Control System Construction
BID No. 070-09, Permit No. 21375-017-SC/08
Monthly Progress Report No. 6 (April 2010)**

On behalf of the Citrus County Solid Waste Management Division (SWMD), SCS Engineers (SCS) has prepared the following monthly summary of the construction activities conducted for the above referenced project from April 1, 2010 through April 30, 2010.

PROJECT OVERVIEW

Work in April included the following:

- Completed Tie-ins to leachate cleanout risers.
- Extended Electrical service and completed connection of all new electrical work to blower/Flare station.
- Placement, connection and startup of the blower/flare system was conducted. Gas system is now on-line and operating
- Begin project wrap up with anticipation of substantial completion in early May

PROJECT SCHEDULE

An update Contractor's construction schedule issued on March 25, 2010 is provided in Attachment A.

SUMMARY OF SUBMITTALS/CHANGE ORDERS

The summary list of submittals reviewed to-date by SCS for the project is provided in Attachment B.

CONSTRUCTION PROGRESS MEETING SUMMARY REPORTS

Attachment C contains the summary of the progress meetings that were held during the month of April.

CONSTRUCTION PHOTOGRAPHS

Attachment D includes photographs that are representative of typical construction activities during the month of April.



SCS ENGINEERS

May 14, 2010
File No. 09207049.04

Ms. Susan J. Pelz, P.E.
Solid Waste Management
Florida Department of Environmental Protection
13051 N. Telecom Parkway
Temple Terrace, Florida 33637-0926

Subject: Monthly Summary of Construction – April 2010
Citrus County Central Class I Landfill Phase 1/1A & 2 Gas Collection and
Control System Construction
Citrus County, Florida
Permit No. 21375-017-SC/08

Dear Susan:

On behalf of the Citrus County Solid Waste Management Division (SWMD), SCS Engineers (SCS) is submitting the sixth monthly progress report for the Phase 1/1A & 2 Gas Collection and Control System Construction Project as required under Specific Condition Part B, Item 5.b. of construction permit no. 21375-017-SC/08. As required by the permit conditions, the monthly progress report includes the following:

1. A narrative explaining the status and any delays of major stages in the construction.
2. A summary of submittals and change order requests.
3. Weekly progress meeting summaries.
4. Color copies of photographs which are representative of the typical construction activities for the reporting period, and photographs which show overall views and details of major stages of construction.

Please call us if you have any questions.

Sincerely,

Daniel R. Cooper, P.E.
Project Manager
SCS ENGINEERS

C. Ed Hilton, P.E.
Vice President
SCS ENGINEERS

cc: Casey Stephens, SWMD

Enclosure



SCS ENGINEERS

May 14, 2010
File No. 09207049.04

**Phase 1/1A & 2 Gas Collection and Control System Construction
BID No. 070-09, Permit No. 21375-017-SC/08
Monthly Progress Report No. 6 (April 2010)**

On behalf of the Citrus County Solid Waste Management Division (SWMD), SCS Engineers (SCS) has prepared the following monthly summary of the construction activities conducted for the above referenced project from April 1, 2010 through April 30, 2010.

PROJECT OVERVIEW

Work in April included the following:

- Completed Tie-ins to leachate cleanout risers.
- Extended Electrical service and completed connection ^{of} all new electrical work to blower/Flare station.
- Placement, connection and startup of the blower/flare system was conducted. Gas system is now on-line and operating
- Begin project wrap up with anticipation of substantial completion in early May

PROJECT SCHEDULE

An update Contractor's construction schedule issued on March 25, 2010 is provided in Attachment A.

SUMMARY OF SUBMITTALS/CHANGE ORDERS

The summary list of submittals reviewed to-date by SCS for the project is provided in Attachment B.

CONSTRUCTION PROGRESS MEETING SUMMARY REPORTS

Attachment C contains the summary of the progress meetings that were held during the month of April.

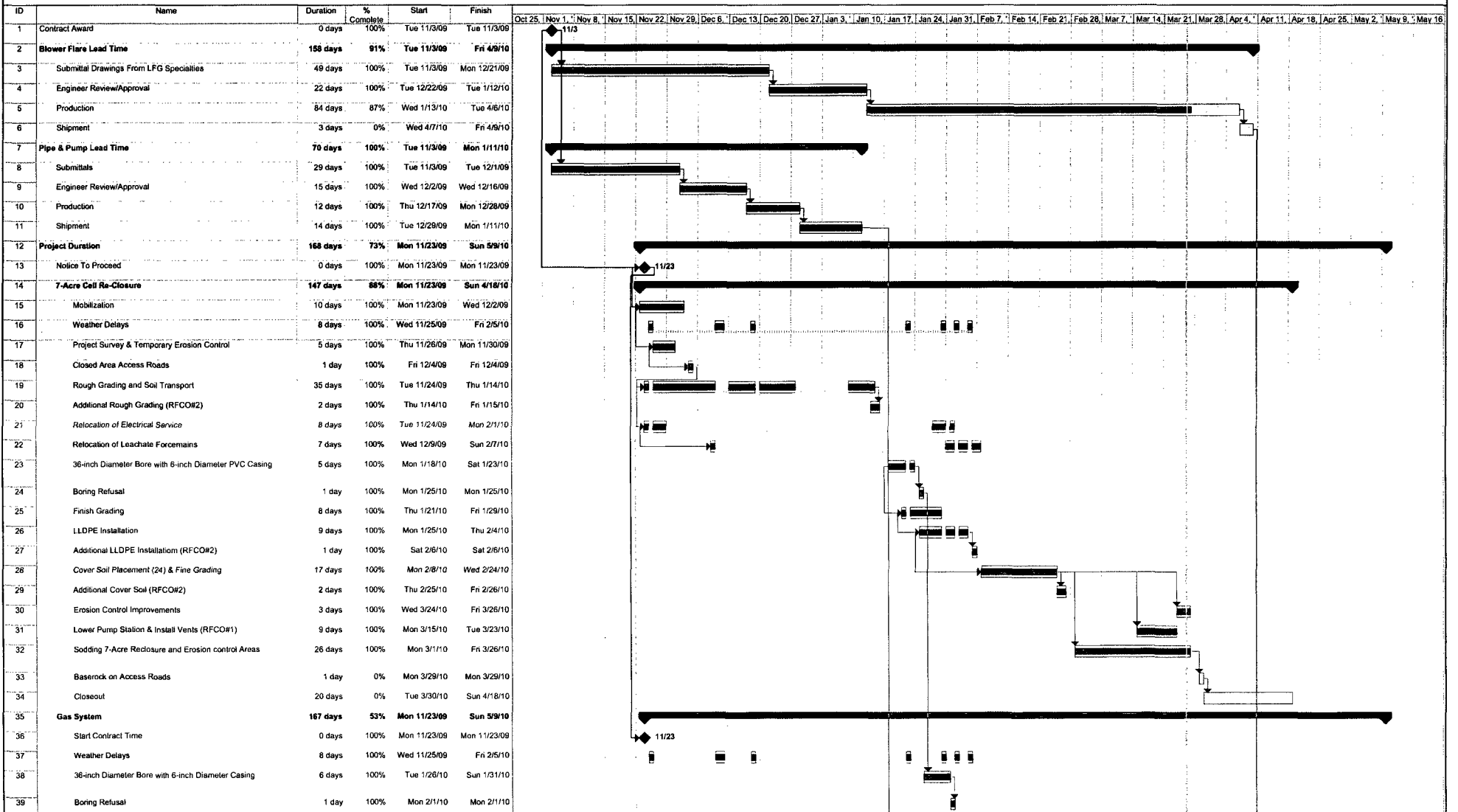
CONSTRUCTION PHOTOGRAPHS

Attachment D includes photographs that are representative of typical construction activities during the month of April.

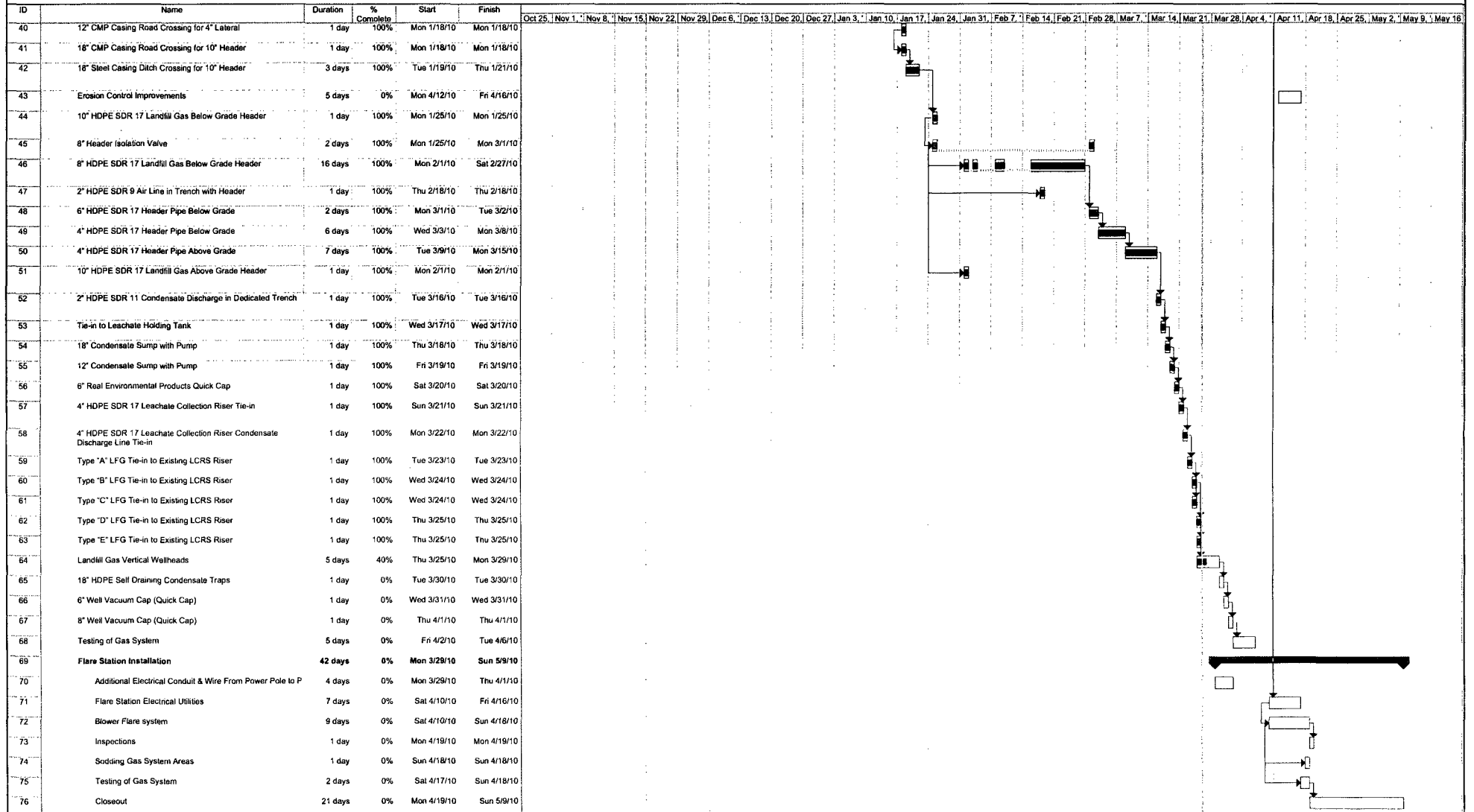


ATTACHMENT A
UPDATED CONTRACTOR SCHEDULE

Citrus County 7-Acre Closed Area Re-Closure & Landfill Gas System Installation Gantt Chart



Citrus County
7-Acre Closed Area Re-Closure & Landfill Gas System Installation
Gantt Chart



ATTACHMENT B
SUMMARY OF SUBMITTALS REVIEWED

7-ACRE RE-CLOSURE SUBMITTAL TRACKING LOG

Submittal No.	PRODUCT	Sub-Contractor/ PartSupplier	Actual Submitted Date	Approved Date	Rejected Date	Make Corrections	Resubmitted Date	REMARKS
000000-1	Compressor Shed	Orlando Steel Enterprises	1/1/2010	1/14/2010				
000000-2	Fence Layout	Belair Contracting	1/12/2010	2/3/2010				
000000-3	Chain Link Fencing & Swing gates	Commercial fence Contractors	1/27/2010	2/3/2010				
000000-4	U-Type Endwalls	OldCastle	1/27/2010	2/2/2010				Changed to 24 inch inlet diameter from 18 inch
000000-5	Lift Station Top Slab	OldCastle	2/2/2010	2/10/2010				
000000-6	Lift Station Hatch	U.S.F Fabrication	2/2/2010	2/10/2010				
013010-1	Shop Drawing Submittal Log	Belair Excavating	11/17/2009	11/18/2009				
013010-10	Subcontractors List	Belair Excavating	11/17/2009	11/18/2009				
013010-11	Topographic Map	Belair Excavating	11/25/2009	11/30/2009				
013010-2	Excavation Plan	Belair Excavating	11/17/2009	11/18/2009				
013010-3	Erosion and Pollution Control Plan	Belair Excavating	11/17/2009	11/18/2009				
013010-4	Quality Control Plan	Belair Excavating	11/17/2009	11/18/2009				
013010-5	Maintenance of Traffic Plan	Belair Excavating	11/17/2009	11/18/2009				
013010-6	Health and Safety Plan	Belair Excavating	11/17/2009	11/18/2009		11/30/2009	12/3/2009	Belair Excavating provided additional information per original submittal comments on 12/3/09 that were incorporated into original submittal
013010-7	Documentation of training of Health and Safety Office	Belair Excavating	11/17/2009	11/18/2009				
013010-8	List of Permits and Belair Licenses	Belair Excavating	11/17/2009	11/18/2009				
013010-9	Application of Payment Documents & Schedule of	Belair Excavating	11/17/2009	11/18/2009				
013011-1	Gantt Chart Schedule	Belair Excavation	11/19/2009	12/2/2009				
015000-2	Preliminary Photos and Videos	Aerial Innovations	11/20/2009	12/11/2009				
015000-4	Existing conditions survey- Ladfill gas system layout	BBLS Surveyors and mappers	2/8/2010	2/10/2010				
015000-5	As-Built Survey, Pre- liner installation conditions	BBLS Surveyors and mappers	2/3/2010	2/10/2010				
015000-6	Progress photos start up through 12/10/09	Belair Excavating	2/8/2010	2/10/2010				
015000-7	Valve Box	Belair Excavating	2/22/2010	3/2/2010				

7-ACRE RE-CLOSURE SUBMITTAL TRACKING LOG

Submittal No.	PRODUCT	Sub-Contractor/ PartSupplier	Actual Submitted Date	Approved Date	Rejected Date	Make Corrections	Resubmitted Date	REMARKS
015000-7	Progress photos 12/11/09 through 12/31/10	Belair Excavating	2/8/2010	2/10/2010				
015000-8	Progress photos 1/1/10 through 1/16/10	Belair Excavating	2/8/2010	2/10/2010				
015000-9	Progress photos 1/17/10 through 1/31/10	Belair Excavating	2/8/2010	2/10/2010				
015055-1	Site Conditions survey-Precon	Belair Excavation sub- BBLS	12/3/2009	12/7/2009				Signed and sealed version
022500-1	Turf Reinforcement Fabric	Propex Landlock	2/17/2010		3/2/2010			
022500-2	Turf Reinforcement Fabric	Erosion Control Blanket	3/5/2010	3/10/2010				
160100-1	Electrical Submittals	Coastal Electrical Contractors	12/14/2009	12/18/2009				
238125-1	Compressed Air System	Grainger	12/14/2009	12/22/2009				
330520-1	Polyethylene Geomembrane Liner	Agru	11/20/2009	1/6/2010				Requested additional information provided 1/5/10 on two type of material to be used.
33.520-2	Polyethylene Geomembrane Liner	Agru	1/9/2010	1/18/2010				Cert. for last seven rolls
332170-1	LFG Extraction Wells	Shaw Environmental	12/10/2009	12/17/2009				
335110-1	Pipe and Pipe Fittings	Ferguson Enterprises	11/30/2009	12/16/2009				Additional information requested 12/7/09
335110-2	Quick Caps	Ferguson Enterprises	1/15/2010	2/2/2010				
335110-3	Electroc Fusion Couplings	Ferguson Enterprises	2/19/2010	3/2/2010				
335110-4	Tubing Clamps		2/25/2010	3/2/2010				
335110-5	Hex Cap Screws		2/26/2010	3/2/2010				
335110-6	Bolt Coating	Custom Fab	4/3/2010	4/6/2010				
335110-7	PTFE Hose	Swagelock	4/5/2010	4/6/2010				
353110-1	Grout Filled Reventment	Fabriform	2/17/2010	3/2/2010				
441120-1	Blower/Flare System - Gas Analyzer	Shaw- LFG Specialties	12/22/2009	1/11/2010				
441120-2	Blower/Flare System - Electrical	Shaw- LFG Specialties	12/22/2009	1/11/2010				Given to Eletrical Engineer 1/6/10, returned 1/08/10
441120-3	Blower/Flare System - Mechanical	Shaw- LFG Specialties	12/22/2009	1/11/2010				
444260-1	Condensate Pump	QED	12/1/2009	12/7/2009				

ATTACHMENT C

CONSTRUCTION PROGRESS MEETING SUMMARY REPORTS

April 2, 2010
File No. 09207049.04

**Citrus County 7-Acre Closed Area Re-Closure and Landfill Gas System Construction
Bid No. 070-09
Construction Progress Meeting No. 16 Summary (4/1/10)**

Attendees:

Casey Stephens, Citrus County Solid Waste Management Division
Dan Cooper, SCS Engineers (SCS)
Mike Wimer, Citrus County Public Works Department-Engineering
Gary Sibernagel, Belair Builders (Belair)

The meeting was held at the Citrus County Central Landfill and began at 10:30 AM on Thursday April 1, 2010

16.1 Status of issues from Last Meeting

Progress Energy- Power Extension was completed but is 30 feet short of anticipated location. Belair is extending from this location.

Stormwater System Repair work in DRA-2 – 7-acre area and area north to DRA-2 is almost 100% regarded. Sodding will be added as quickly as possible. DRA-2 still needs to dry out before repairs in pond can be conducted.

16.2 Work progress

Since Last meeting.

Extension of power from pole – Belair is across road with power, just needs to confirm location of panel to terminate run in appropriate place.

Work on lowering leachate risers - Both risers have been lowered and all electrical connections completed. Pumps are back on line.

LCRS Tie-ins for gas system – Tie-in were completed this week.

Bollard installation has been initiated and should be completed next week.

Expected progress-during next work period.

Reworking of CTs- Belair will excavate to union in CTs and install the lower 6 inch pipe inside newt week.

Regrading and Placement of sod – Will be completed on 7-acre side of project within a week.

Electrical work at flare station – Will begin next Monday.

- 16.3 Field Observations – Mike brought up a crushed CMP pipe across the back haul road that was damaged during rain events and will need to be repaired. Picture of crushed area of pipe was provided by Mike to SCS and Belair.

- 16.4 Construction Schedule – New schedule was issued in Late March and is still valid.

Blower/Flare skid has been schedule for April 9th arrival date. Belair will arrange for crane to off load flare upon arrival. LFG specialties will be scheduled once electrical work is complete, hopefully w/o the 12th.

- 16.5 Coordination of work items with County activities- Hazardous waste event for Friday April 9, 2010 will need to be moved as flare is scheduled to be offloaded with a crane that day and we do not want customers around the area. Carmen to arrange the change.

- 16.6 Shop drawings and other submittals

RFI # 4 requesting specification for Humidity Sensor- holding off- will not be on skid.

RFI # 6 – Complete

Contract extension request for rain delays- In Process

335110-6 Bolt Coatings – In process

335110-7 PTFE Hose – Belair to provide exact part number that was not on submittal.

- 16.7 Record documents – Photos through mid march received. Belair still needs to bring dailies up to date before pay application for March will be reviewed.

- 16.8 Maintenance of quality standards- All records are being kept in Belair trailer. Any deviations should be tracked on redline set of plans.

- 16.9 Pending Changes or substitutions – Belair will track all small changes and update SCS and County weekly.

- 16.10 Other Business- Backup will be provided with Final RFCO.

- 16.11 Next Meeting Date- April 13, 2010, 10:30 AM at Citrus County Central Landfill administration building.

April 14, 2010
File No. 09207049.04

**Citrus County 7-Acre Closed Area Re-Closure and Landfill Gas System Construction
Bid No. 070-09
Construction Progress Meeting No. 17 Summary (4/14/10)**

Attendees:

Casey Stephens and Carmen Bruno, Citrus County Solid Waste Management Division
Dan Cooper, SCS Engineers (SCS)
Mike Wimer, Citrus County Public Works Department-Engineering
Gary Sibernagel, Belair Builders (Belair)

The meeting was held at the Citrus County Central Landfill and began at 10:30 AM on Wednesday April 14, 2010

17.1 Status of the Issues from Last Meeting-

Stormwater Improvements above DRA-5 – Water level is currently at elevation of 92 feet. Plans call for 82 feet but may not require that the pond be dry or higher elevation may be OK. SCS requested that Belair propose solutions for installing the revetment if the water does not go down (Coffer dam, pumping) and provide cost to County. SCS to review if anchor trench can be removed from bottom skirt to allow for installation.

17.2 Work progress

Since Last meeting.

All work on Leachate risers modification is completed.

LCRS Tie-ins for gas system – Tie-in are complete except for a few caps on west side that will be added before system is turned on.

Flare Skid arrived and was set in place by Belair, electricians working to get all connection made.

Expected progress-during next work period.

Electrical work at flare station – Will need to be completed and electrical inspection conducted prior to Progress Energy setting meter and energizing the connection. Electrical inspection needs to be scheduled appropriately.

Flare installation and Start-up- Final connections and drain lines will be installed in the next couple of days. LFG Specialties to be on site April 20-23 to test out flare and then start.

Stormwater Pond repair work – Belair is going to remove all silted in sod from DRA-1 and DRA-2 and then till underlying sand and grade smooth. The pond bottoms will not be resodded at this time.

- 17.3 Field Observations – Belair discussed some work that has been done (Added check dams and erosion control matting to entrance of DRA-1 in hopes of slowing incoming water. SCS mentioned a couple of repairs that need to be completed, the road crossing and lateral to EW-10 that has low point in run.
- 17.4 Construction Schedule – New schedule was issued in late March and is still valid.
- 17.5 Coordination of work items with County activities- Belair will coordinate with County to get bucket truck in and add wellheads to those wells that have been raised up around the working face area.
- 17.6 Shop drawings and other submittals

Pay Application # 5 – Received all dailies through end of March Yesterday and can now process Pay Application.
Request for Clarification on Erosion control work – This was discussed and the work is still part of this contract and needs to be installed. Belair will discuss with installation contractor. Water level has continued to drop.
- 17.7 Record documents – Photos through mid March received. Next photos are due now.
- 17.8 Maintenance of quality standards- SCS mentioned record drawing set in Trailer and the need for that to be up to date with all changes.
- 17.9 Pending Changes or substitutions – None
- 17.10 Other Business- Final RFCO. Tim has sent out tracking file. All numbers will need to have back up when submitted. Purpose of the back gates was discussed (ERP permit requirement for ponds with sideslopes greater than 3:1)
- 17.11 Next Meeting Date- TBD based upon Flare Training.

April 23, 2010
File No. 09207049.04

**Citrus County 7-Acre Closed Area Re-Closure and Landfill Gas System Construction
Bid No. 070-09
Construction Progress Meeting No. 18 Summary (4/23/10)**

Attendees:

Casey Stephens and Carmen Bruno, Citrus County Solid Waste Management Division
Dan Cooper, SCS Engineers (SCS)
Mike Wimer, Citrus County Public Works Department-Engineering
Gary Sibernagel, Belair Builders (Belair)

The meeting was held at the Citrus County Central Landfill and began at 11:00 AM on Friday April 23, 2010

18.1 Status of the Issues from Last Meeting-

Stormwater Improvements above DRA-5 – Pumping of liquids out of DRA-5 towards DRA-4 is an option and Belair will explore as long as DRA-4 does not accumulate water. Belair's contractor will be on site next week and believes that improvements can be installed. Anchor trench on skirt is not required if too wet to excavate near water's edge. Surveyor will layout ditches on Monday or Tuesday.

18.2 Work progress

Since Last meeting.

All Electrical work was completed, inspected and meter installed.

All connection to Blower/Flare completed prior to system start up.

System Start up occurred and LFG specialties provided training on April 23, 2010.

Repair of pipe at road crossing is underway and will be completed within a day or so. Survey will establish depth of pipe which must be maintained so that there is at least 2 feet of cover.

DRA-1 and DRA-2 have been reworked and are now completed.

Expected progress-during next work period.

Erosion Control work to be completed, three ditches from edge of liner to DRA-5 on south end of open area.

Final survey to be completed and supplied with record drawings following substantial inspection.

18.3 Field Observations –Revetment contractor to make call on installation of skirt in field once installation begins.

18.4 Construction Schedule – New schedule was issued in late March and is still valid. Belair to request substantial completion walk through once they are ready.

18.5 Coordination of work items with County activities- All well extensions and well head are in place and County can proceed with all filling plans.

18.6 Shop drawings and other submittals

Pay Application # 5 – In Process- SCS signed off and delivered to County at meeting. Received all dailies through end of March Yesterday and can now process Pay Application.

Request for Clarification on Erosion control work – awaiting Belair determination on possible solutions if work cannot be conducted in current conditions (looking good as water in pond continues to drop).

18.7 Record documents – Photos through mid April. Next photos are due end of month. Contractor dailies through end of March received. Need April dailies to be brought up to date.

18.8 Maintenance of quality standards- SCS will review all drawing in Belair trailer today and provide feedback on required changes/updates.

18.9 Pending Changes or substitutions – Need to determine communications option for Flare. Telephone line run may be cost prohibitive. Belair to provide cost for wireless system connected via cell phone.

18.10 Other Business- Final RFCO. Tim has sent out tracking file. All numbers will need to have back up when submitted.

18.11 Next Meeting Date- Substantial completion walk through will be schedule as requested otherwise no additional progress meetings will be held.

ATTACHMENT D
PHOTOGRAPHS

Photograph Number 1



Date: April 2, 2010

Site: Phase I / IA & 2 GCCS Construction, Citrus County, Florida

Description: Completed CS-1 with protective bollards.

Photograph Number 2



Date: April 9, 2010

Site: Phase I / IA & 2 GCCS Construction, Citrus County, Florida

Description: Blower flare skid being placed by crane.

Photograph Number 3



Date: April 9, 2010

Site: Phase I / IA & 2 GCCS Construction, Citrus County, Florida

Description: Raising of flare and securing in place.

Photograph Number 4



Date: April 9, 2010

Site: Phase I / IA & 2 GCCS Construction, Citrus County, Florida

Description: CT-1 and EW-8R pipes extended for filling of next lift.

Photograph Number 5



Date: April 15, 2010

Site: Phase I / IA & 2 GCCS Construction, Citrus County, Florida

Description: New compressor and air dryer being installed in compressor shed.

Photograph Number 6



Date: April 15, 2010

Site: Phase I / IA & 2 GCCS Construction, Citrus County, Florida

Description: Overflow swale for DRA-5 on South perimeter road.

Photograph Number 7



Date: April 19, 2010

Site: Phase I / IA & 2 GCCS Construction, Citrus County, Florida

Description: Bottom of valve extension on V-1 encapsulated in plastic sheeting.

Photograph Number 8



Date: April 19, 2010

Site: Phase I / IA & 2 GCCS Construction, Citrus County, Florida

Description: Installation of new electrical service panels at blower/flare station.

Photograph Number 9



Date: April 20, 2010

Site: Phase I / IA & 2 GCCS Construction, Citrus County, Florida

Description: Backfilling around V-1 and V-2.

Photograph Number 10



Date: April 28, 2010

Site: Phase I / IA & 2 GCCS Construction, Citrus County, Florida

Description: Blower flare area completed with fencing.

SCS ENGINEERS

June 15, 2010
File No. 09207049.04

Dept. Of Environmental Protection
JUN 15 2010
Southwest District

Ms. Susan J. Pelz, P.E.
Solid Waste Management
Florida Department of Environmental Protection
13051 N. Telecom Parkway
Temple Terrace, Florida 33637-0926

Subject: Monthly Summary of Construction – May 2010
Citrus County Central Class I Landfill Phase 1/1A & 2 Gas Collection and
Control System Construction
Citrus County, Florida
Permit No. 21375-017-SC/08

Dear Susan:

On behalf of the Citrus County Solid Waste Management Division (SWMD), SCS Engineers (SCS) is submitting the seventh monthly progress report for the Phase 1/1A & 2 Gas Collection and Control System Construction Project as required under Specific Condition Part B, Item 5.b. of construction permit no. 21375-017-SC/08. As required by the permit conditions, the monthly progress report includes the following:

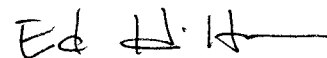
1. A narrative explaining the status and any delays of major stages in the construction.
2. A summary of submittals and change order requests.
3. Weekly progress meeting summaries.
4. Color copies of photographs which are representative of the typical construction activities for the reporting period, and photographs which show overall views and details of major stages of construction.

Please call us if you have any questions.

Sincerely,



Daniel R. Cooper, P.E.
Project Manager
SCS ENGINEERS



C. Ed Hilton, P.E.
Vice President
SCS ENGINEERS

cc: Casey Stephens, SWMD

Enclosure



SCS ENGINEERS

June 15, 2010
File No. 09207049.04

**Phase 1/1A & 2 Gas Collection and Control System Construction
BID No. 070-09, Permit No. 21375-017-SC/08
Monthly Progress Report No. 7 (May 2010)**

On behalf of the Citrus County Solid Waste Management Division (SWMD), SCS Engineers (SCS) has prepared the following monthly summary of the construction activities conducted for the above referenced project from May 1, 2010 through May 31, 2010.

PROJECT OVERVIEW

Work in May included the following:

- All work was completed and all inspections performed.

PROJECT SCHEDULE

Contractor's construction schedule issued on March 25, 2010 and provided previously has not changed.

SUMMARY OF SUBMITTALS/CHANGE ORDERS

No submittals were reviewed in May thus the previous list submitted with the April summary is the final list.

CONSTRUCTION PROGRESS MEETING SUMMARY REPORTS

No Progress meetings were held in May as the project was deemed complete on May 5, 2010.

CONSTRUCTION PHOTOGRAPHS

Final photographs will be included as part of the certification report to be submitted shortly as part of the permit requirements.

