

Hillsborough County
Florida

Office of the County Administrator
Patricia G. Bean

January 14, 2008

BOARD OF COUNTY COMMISSIONERS

Brian Blair
Rose V. Ferlita
Ken Hagan
Al Higginbotham
Jim Norman
Mark Sharpe
Kevin White

Deputy County Administrator
Wally Hill

Assistant County Administrators
Kenneth C. Griffin
Carl S. Harness
Margaret O'Donnell

Dept. of Environmental
Protection

JAN 15 2008

Southwest District

Ms. Susan J. Pelz, P.E.
Solid Waste Permitting
Florida Department of Environmental Protection
Southwest District
13051 N. Telecom Pkwy
Temple Terrace, Florida 33637

RE: Southeast County Landfill – Leachate Data Quarterly Report

Dear Ms. Pelz:

In accordance with Specific Conditions No. 16 of Permit No. 35435-006-SO, the Solid Waste Management Department (SWMD) is submitting the quarterly Leachate Water Balance submittal for the Southeast County Landfill for the quarter ending January 15, 2008.

The data is being submitted as separate monthly reports for October, November, and December 2007. The information includes the leachate level in Pump Station B (PS-B). PS-B was below the 24-inch normal operation level during this quarter except for November 2, 3, December 5, 8, 21, 27, and 31 due to a pump malfunctions. These malfunctions were immediately corrected.

Also attached is the top of the phosphatic clay liner elevation at the Pump Station B Sump.

Please advise should you have any questions concerning the attached submittal.

Sincerely,

Patricia V. Berry
Landfill Services Section Manager
Solid Waste Management Department

Attachment

xc: Larry Ruiz, SWMD
Walter Gray, SWMD
Joe O'Neill, JEA
Paul Schipfer, EPC

Post Office Box 1110 • Tampa, Florida 33601

Web Site: www.hillsboroughcounty.org

An Affirmative Action/Equal Opportunity Employer

MAR 17 2008

INITIAL

FLORIDA DEPARTMENT OF
ENVIRONMENTAL PROTECTION
JAN 15 2008
SOUTHWEST DISTRICT
TAMPA

TABLE 1. APPROXIMATE TOP OF CLAY ELEVATIONS
PUMP STATION B SUMP
SOUTHEAST COUNTY LANDFILL

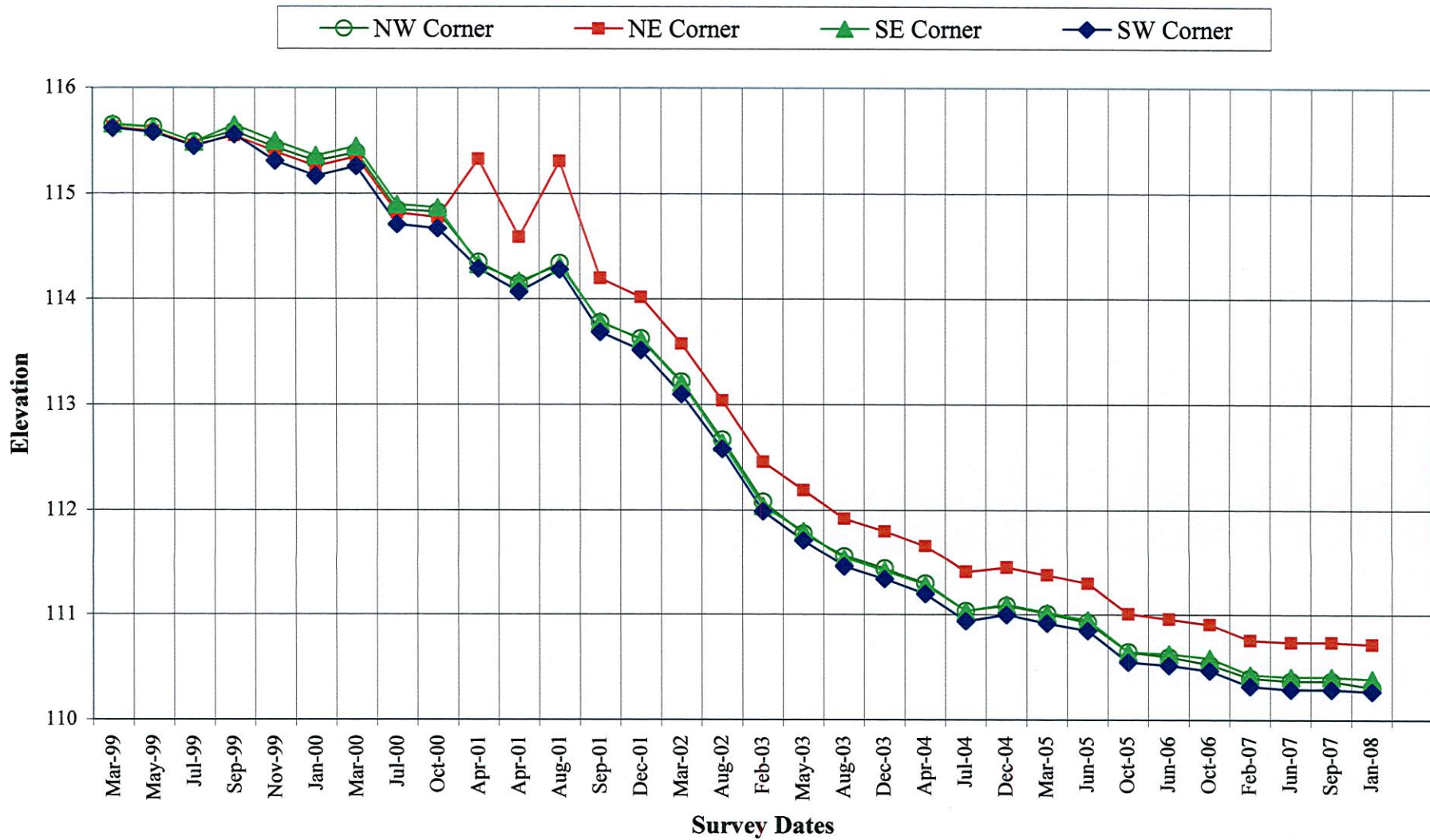
DATE	NW	NE	SE	SW
March 3, 1999	115.65	115.63	115.66	115.62
May 4, 1999	115.63	115.59	115.63	115.58
July 28, 1999	115.49	115.46	115.49	115.45
September 17, 1999 ²	115.59	115.55	115.65	115.56
November 11, 1999	115.44	115.40	115.50	115.31
January 3, 2000	115.31	115.26	115.36	115.17
March 30, 2000	115.39	115.35	115.45	115.26
July 5, 2000 ³	114.85	114.82	114.90	114.71
October 5, 2000	114.83	114.78	114.87	114.67
April 6, 2001	114.35	115.33	114.33	114.29
April 18, 2001 ²	114.15	114.59	114.17	114.07
August 8, 2001	114.34	115.31	114.32	114.28
September 19, 2001 ²	113.78	114.20	113.79	113.69
December 18, 2001	113.63	114.02	113.62	113.52
March 29, 2002	113.22	113.58	113.21	113.10
August 15, 2002 ²	112.67	113.04	112.64	112.58
February 1, 2003	112.08	112.46	112.04	111.99
May 1, 2003	111.78	112.19	111.80	111.71
September 2, 2003	111.56	111.92	111.54	111.46
December 1, 2003	111.44	111.80	111.42	111.34
April 1, 2004	111.30	111.66	111.29	111.20
July 31, 2004	111.04	111.41	111.04	110.94
December 1, 2004	111.09	111.45	111.10	111.00
March 1, 2005	111.01	111.38	111.02	110.92
June 2, 2005	110.93	111.30	110.95	110.85
October 1, 2005	110.65	111.01	110.65	110.55
February 1, 2006	110.67	111.03	110.69	110.58
June 6, 2006	110.60	110.96	110.63	110.52
October 2, 2006	110.53	110.91	110.59	110.47
February 1, 2007	110.40	110.76	110.43	110.32
June 1, 2007	110.37	110.74	110.41	110.29
September 1, 2007 ²	110.37	110.74	110.41	110.29
January 2, 2008	110.31	110.72	110.39	110.27

leachate/calcs/ClayTop.xls; updated 1/15/08 ler

Notes:

1. Vertical Datum based on feet NGVD 1929.
2. WMI extended the rods of the settling plates.
3. Benchmarks used in March 30, 2000 survey were found to have settled; elevations shown for July 5, 2000 were tied into new benchmarks.

Settlement of Pump Station B Sump





PICKETT
SURVEYING & PHOTOGRAMMETRY

REPORT OF SURVEY

**NOTE: THIS REPORT IS NOT VALID WITHOUT THE SIGNATURE AND ORIGINAL
RAISED SEAL OF A FLORIDA LICENSED SURVEYOR AND MAPPER.**

PICKETT & ASSOCIATES, PROJECT NO.: 12131-1

DRAWING NO: N/A

TITLE/TYPE OF SURVEY: SPECIFIC PURPOSE SURVEY

DATE OF SURVEY: 01/02/08

SUBJECT: SOUTHEAST HILLSBOROUGH COUNTY LANDFILL SITE

CLIENT: WASTE MANAGEMENT, INC. OF FLORIDA

PIPE	NORTHING	EASTING	ELEVATION	DESCRIPTION
SW	1251010.3	596333.8	182.68	Top of 4" pipe
			182.30	Top of 1" pipe
SE	1251004.7	596339.5	182.80	Top of 4" pipe
			182.44	Top of 1" pipe
NE	1251014.2	596344.4	182.83	Top of 4" pipe
			182.45	Top of 1" pipe
NW	1251014.5	596336.5	182.27	Top of 4" pipe
			182.34	Top of 1" pipe

METHODOLOGY AND ACCURACY STATEMENT:

The top of the 4" pipe located at the northwest corner of the vault was used as a benchmark and surveyed with RTK GPS and was observed at least twice with a new initialization between each observation. Observation time at that point did not exceed 10 minutes. This point has an estimated horizontal positional accuracy of 0.08' or less and a vertical positional accuracy of 0.10' or less.

DATUM:

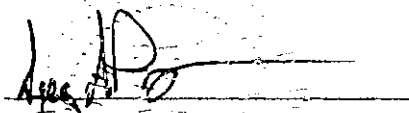
HORIZONTAL: North and the Coordinates are based on the West Zone of the Florida State Plane Coordinate System, NAD 83 1990 adjustment and are based upon provided control referenced to Hillsborough County Horizontal Control Monument LW-H (PID AG8963) and BY-E (PID AG8747).

VERTICAL: Elevations are to National Geodetic Vertical Datum of 1929 and are based upon provided control referenced to Hillsborough County Horizontal Control Monument VR-B (PID AG9078), elevation is 103.08' from Hillsborough County's Vertical Control Network.

Pickett & Associates, Inc.

NOTES:

The quarterly Specific Purpose Survey was prepared to show the existing conditions of the above ground pipes coming from the vault located at the above referenced landfill.



Gregory A. Prather, F.L.S.
Florida Registration No. 5135
Pickett & Associates, Inc.
Florida Registration No. 364

1/2/08
Survey Date

