



June 8, 2010

Susan J. Pelz, P.E.  
Florida Department of Environmental Protection  
Southwest District  
13051 North Telecom Parkway  
Temple Terrace, Florida 33637-0926

Dept. Of Environmental Protection  
JUN 11 2010  
Southwest District

Subject: Hillsborough County Maintenance  
Southeast County Landfill, Hillsborough County, Florida  
FDEP ID No.: SWD/29/41193  
Jones Edmunds Project No. 08449-030-04

Dear Ms. Pelz:

On behalf of the Hillsborough County Solid Waste Management Department (SWMD), Jones Edmunds is informing the Florida Department of Environmental Protection (FDEP) of maintenance to one of the fire hydrants at the Southeast County Landfill.

During the construction hydraulic test of the effluent/leachate storage tank at the Landfill, Hillsborough County found that the flow through the existing fire hydrant (near the Leachate Treatment Plant) was not adequate for fire protection. An in-line pump was added to increase the flow of the fire hydrant. In addition, a stand pipe has also been added to allow the hydrant to be used as a water loading location for dust control at the facility. Please see the attached as-built plan and detail.

Please call us if you require any clarifications or information relating to the mentioned facility maintenance.

Sincerely,

Donald E. Hullings, P.E.  
Director of Civil/Environmental Department

cc: Patricia V. Berry, SWMD  
Larry Ruiz, SWMD  
Ron Cope, HCEPC

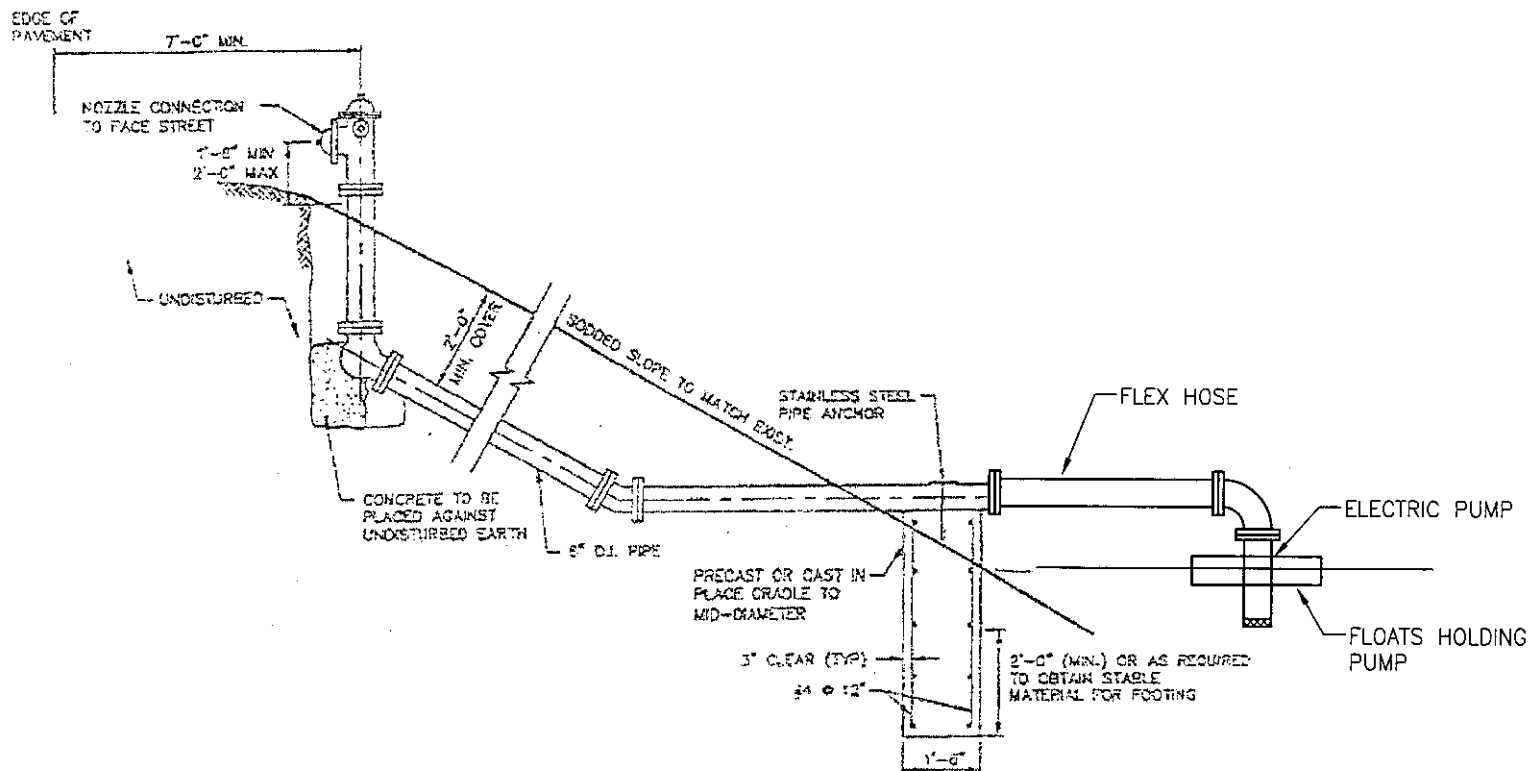
Enclosure

W:\08449\030041110\CORR\06-08-10\_LTR\_S\_Pelz\_Modifications.doc

730 NE Waldo Rd  
Gainesville, FL 32641

352.377.5821 Phone  
352.377.3166 Fax  
www.jonesedmunds.com

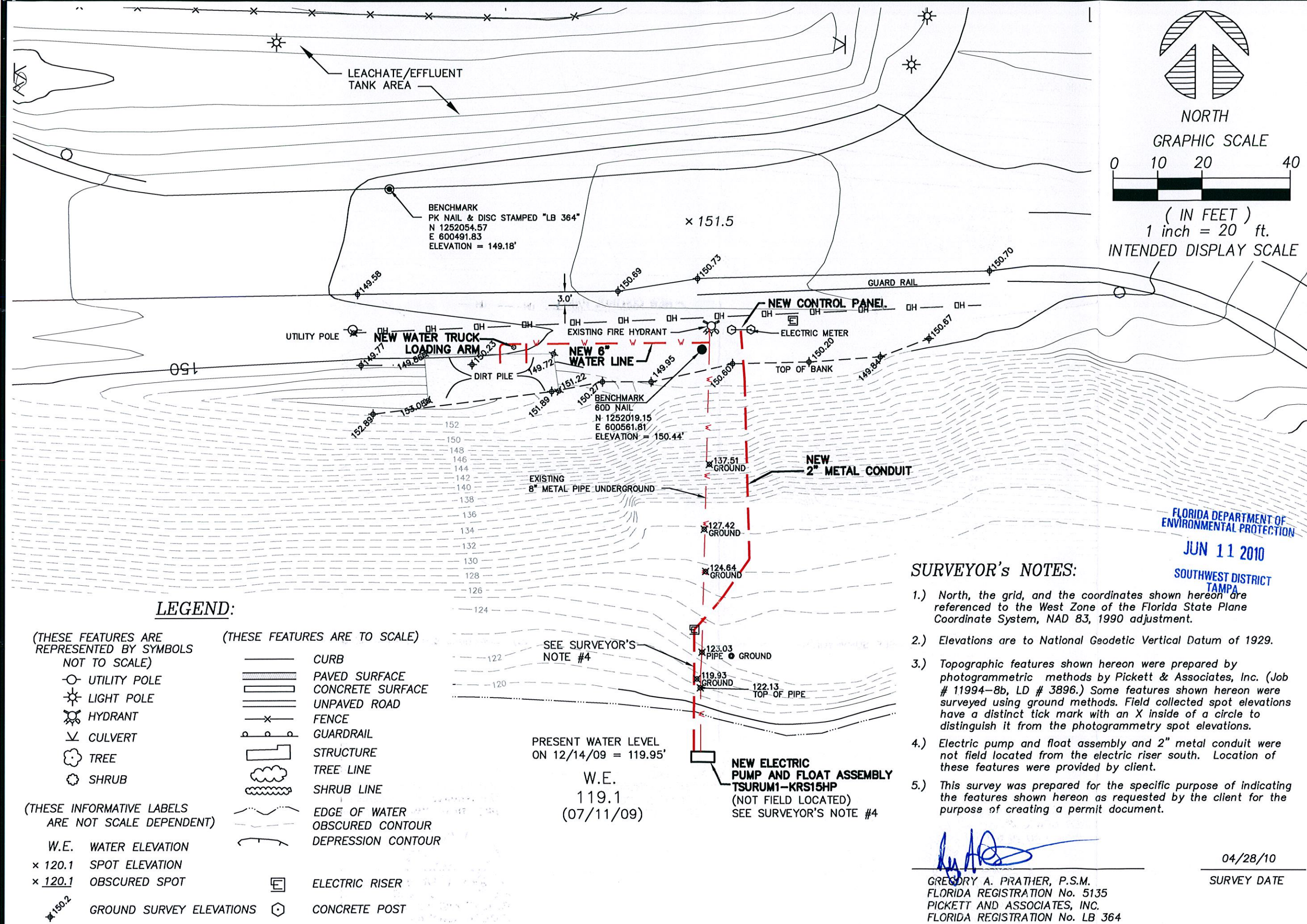
LAST SAVED: 6/4/2010 9:51 AM JALLEN N:\08449 Hillsborough County\030 03 Phase 1 Slope Stability\Figures\0844903003-Fire-hydrant.dwg



AS BUILT FIRE HYDRANT ASSEMBLY  
SOUTHEAST COUNTY LANDFILL  
FIRE HYDRANT ASSEMBLY  
HILLBOROUGH COUNTY FLORIDA

Dept. Of Environmental Protection  
JUN 11 2010  
Southwest District





LEGEND:

- (THESE FEATURES ARE REPRESENTED BY SYMBOLS NOT TO SCALE)

  - UTILITY POLE
  - LIGHT POLE
  - HYDRANT
  - CULVERT
  - TREE
  - SHRUB

(THESE INFORMATIVE LABELS ARE NOT SCALE DEPENDENT)

  - W.E. WATER ELEVATION
  - x 120.1 SPOT ELEVATION
  - x 120.1 OBSCURED SPOT
  - x 150.2 GROUND SURVEY ELEVATIONS
- (THESE FEATURES ARE TO SCALE)

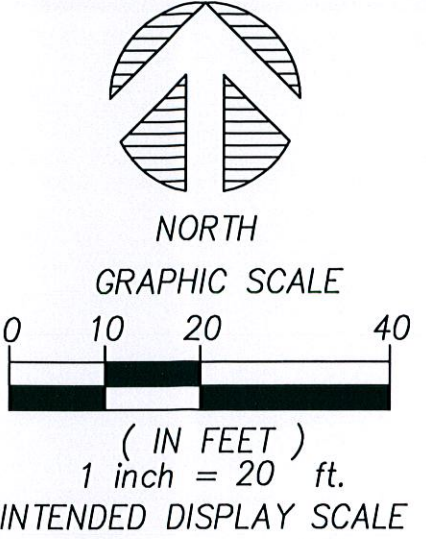
  - CURB
  - PAVED SURFACE
  - CONCRETE SURFACE
  - UNPAVED ROAD
  - FENCE
  - GUARDRAIL
  - STRUCTURE
  - TREE LINE
  - SHRUB LINE
  - EDGE OF WATER
  - OBSCURED CONTOUR
  - DEPRESSION CONTOUR
  - ELECTRIC RISER
  - CONCRETE POST

SURVEYOR'S NOTES:

- 1.) North, the grid, and the coordinates shown hereon are referenced to the West Zone of the Florida State Plane Coordinate System, NAD 83, 1990 adjustment.
- 2.) Elevations are to National Geodetic Vertical Datum of 1929.
- 3.) Topographic features shown hereon were prepared by photogrammetric methods by Pickett & Associates, Inc. (Job # 11994-8b, LD # 3896.) Some features shown hereon were surveyed using ground methods. Field collected spot elevations have a distinct tick mark with an X inside of a circle to distinguish it from the photogrammetry spot elevations.
- 4.) Electric pump and float assembly and 2" metal conduit were not field located from the electric riser south. Location of these features were provided by client.
- 5.) This survey was prepared for the specific purpose of indicating the features shown hereon as requested by the client for the purpose of creating a permit document.

GREGORY A. PRATHER, P.S.M.  
FLORIDA REGISTRATION No. 5135  
PICKETT AND ASSOCIATES, INC.  
FLORIDA REGISTRATION No. LB 364

04/28/10  
SURVEY DATE



SPECIFIC PURPOSE

LOCATED IN SECTION 14  
TOWNSHIP 31 SOUTH, RANGE 21 EAST,  
PREPARED FOR: WASTE MANAGEMENT



Sheet No. 1 of 1	Project No. 12131-6	Horiz. Scale 1" = 20'	Drawing Name: 12131-6-Site-Plans
Drawn by SAK	Drawing No. SD 2858	Field Book 724, Page 51-52	

NOT VALID WITHOUT  
THE SIGNATURE AND  
THE ORIGINAL RAISED  
SEAL OF A FLORIDA  
LICENSED SURVEYOR  
AND MAPPER.