

BOARD OF COUNTY COMMISSIONERS

Kevin Beckner
Victor D. Crist
Ken Hagan
Al Higginbotham
Lesley "Les" Miller, Jr.
Sandra L. Murman
Mark Sharpe



Office of the County Administrator
Michael S. Merrill

CHIEF ADMINISTRATIVE OFFICER
Helene Marks

CHIEF FINANCIAL ADMINISTRATOR
Bonnie M. Wise

DEPUTY COUNTY ADMINISTRATORS
Lucia E. Garsys
Sharon D. Subadan

Dept. Of Environmental Protection

APR 19 2011

Southwest District

April 13, 2011

Ms. Susan J. Pelz, P.E.
Solid Waste Permitting
Florida Department of Environmental Protection
Southwest District
13051 N. Telecom Pkwy
Temple Terrace, Florida 33637

RE: Southeast County Landfill – Leachate Data Quarterly Report

Dear Ms. Pelz:

In accordance with Specific Condition No. 8 of Permit No. 35435-014-SO, the Solid Waste Management Group (SWMG) is submitting the quarterly Leachate Water Balance summary for the Southeast County Landfill for the quarter ending April 15, 2011.

The data is being submitted as separate monthly reports for January, March, and April 2011. The information includes the leachate level in Pump Station B (PS-B). PS-B was below the 24-inch normal operation level during this quarter except for January 15, and March 9 and 12 due to pump malfunctions. These malfunctions were immediately corrected.

Also attached is the top of the phosphatic clay liner elevation at the Pump Station B Sump.

Please advise should you have any questions concerning the attached submittal.

Sincerely,

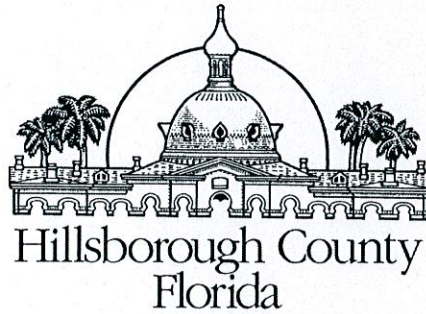
A handwritten signature in blue ink that reads "Patricia V. Berry".

Patricia V. Berry
Section Manager
Solid Waste Management Group
Public Utilities Department

Attachment
xc: Rich Siemering, HDR
Ron Cope, EPC
Paul Schipfer, EPC

BOARD OF COUNTY COMMISSIONERS

Kevin Beckner
Victor D. Crist
Ken Hagan
Al Higginbotham
Lesley "Les" Miller, Jr.
Sandra L. Murman
Mark Sharpe



Office of the County Administrator
Michael S. Merrill

CHIEF ADMINISTRATIVE OFFICER
Helene Marks

CHIEF FINANCIAL ADMINISTRATOR
Bonnie M. Wise

DEPUTY COUNTY ADMINISTRATORS
Lucia E. Garsys
Sharon D. Subadan

MEMORANDUM

FLORIDA DEPARTMENT OF
ENVIRONMENTAL PROTECTION
APR 19 2011
SOUTHWEST DISTRICT
TAMPA

DATE: April 13, 2011

TO: Patricia Berry, Section Manager, Solid Waste Management Group

FROM: *jer* Larry Ruiz, General Manager III, Solid Waste Management Group

SUBJECT: Top of Phosphatic Clay Liner Elevations, Southeast County Landfill

The Hillsborough County Solid Waste Management Department staff has received and reviewed the attached Report of Survey from Pickett & Associates, Inc. (Pickett) dated April 1, 2011. The elevations provided by Pickett are used to calculate the approximate elevations of the top of the phosphatic clay liner at the Pump Station B Sump location. As shown on Table 1, the Pump Station B sump continued to show a slight downward change in elevation for this quarter.

Please advise should you have any questions concerning the information provided.

Attachments

TABLE 1. APPROXIMATE TOP OF CLAY ELEVATIONS
PUMP STATION B SUMP
SOUTHEAST COUNTY LANDFILL.

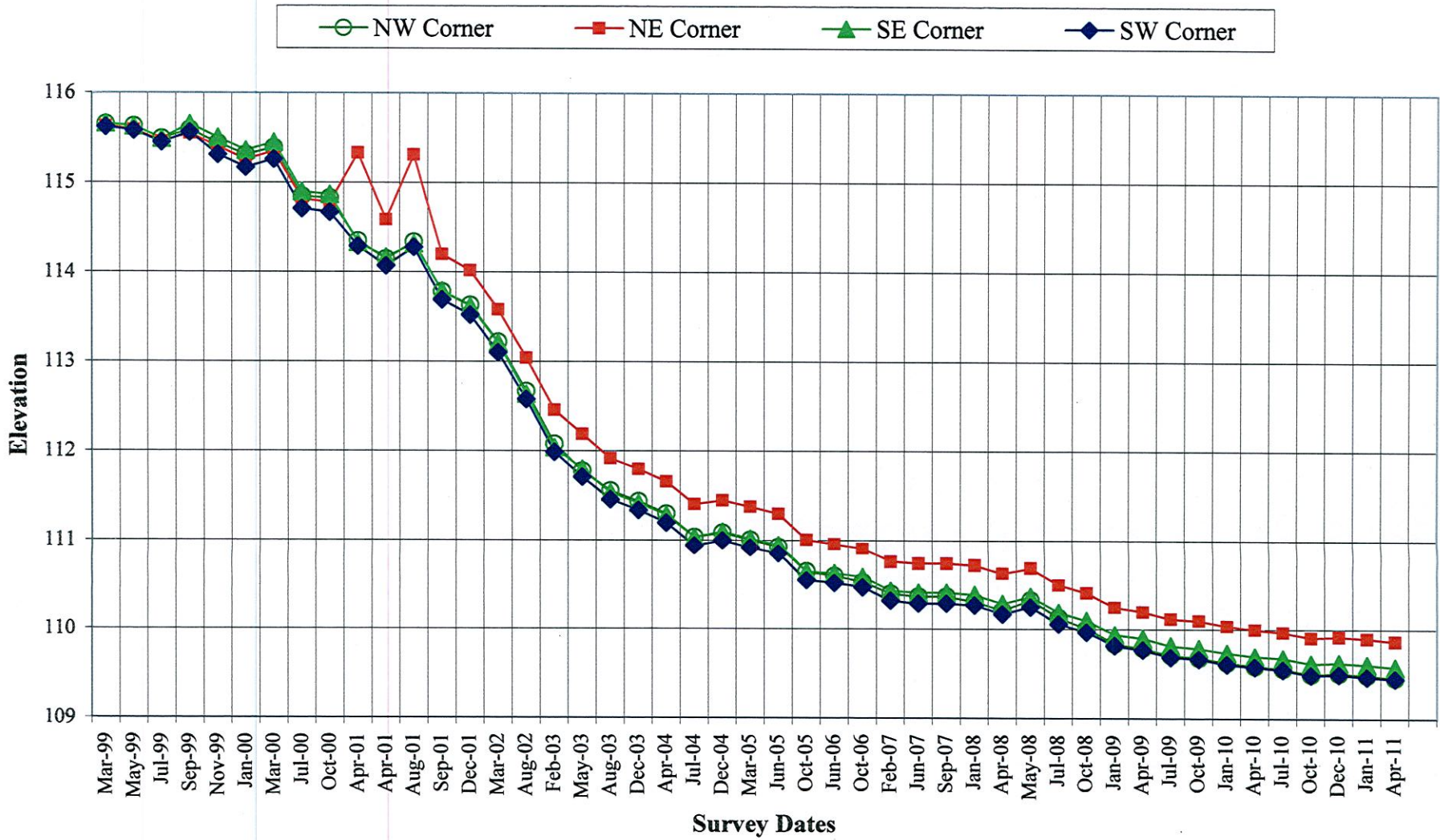
DATE	NW	NE	SE	SW
March 3, 1999	115.65	115.63	115.66	115.62
May 4, 1999	115.63	115.59	115.63	115.58
July 28, 1999	115.49	115.46	115.49	115.45
September 17, 1999 ²	115.59	115.55	115.65	115.56
November 11, 1999	115.44	115.40	115.50	115.31
January 3, 2000	115.31	115.26	115.36	115.17
March 30, 2000	115.39	115.35	115.45	115.26
July 5, 2000 ³	114.85	114.82	114.90	114.71
October 5, 2000	114.83	114.78	114.87	114.67
April 6, 2001	114.35	115.33	114.33	114.29
April 18, 2001 ²	114.15	114.59	114.17	114.07
August 8, 2001	114.34	115.31	114.32	114.28
September 19, 2001 ²	113.78	114.20	113.79	113.69
December 18, 2001	113.63	114.02	113.62	113.52
March 29, 2002	113.22	113.58	113.21	113.10
August 15, 2002 ²	112.67	113.04	112.64	112.58
February 1, 2003	112.08	112.46	112.04	111.99
May 1, 2003	111.78	112.19	111.80	111.71
September 2, 2003	111.56	111.92	111.54	111.46
December 1, 2003	111.44	111.80	111.42	111.34
April 1, 2004	111.30	111.66	111.29	111.20
July 31, 2004	111.04	111.41	111.04	110.94
December 1, 2004	111.09	111.45	111.10	111.00
March 1, 2005	111.01	111.38	111.02	110.92
June 2, 2005	110.93	111.30	110.95	110.85
October 1, 2005	110.65	111.01	110.65	110.55
February 1, 2006	110.67	111.03	110.69	110.58
June 6, 2006	110.60	110.96	110.63	110.52
October 2, 2006	110.53	110.91	110.59	110.47
February 1, 2007	110.40	110.76	110.43	110.32
June 1, 2007	110.37	110.74	110.41	110.29
September 1, 2007 ²	110.37	110.74	110.41	110.29
January 2, 2008	110.31	110.72	110.39	110.27
April 1, 2008	110.21	110.63	110.29	110.17
May 8, 2008 ²	110.33	110.69	110.37	110.25
July 1, 2008	110.13	110.50	110.19	110.06
October 1, 2008	110.01	110.41	110.10	109.97
January 2, 2009	109.84	110.25	109.94	109.82
April 1, 2009	109.79	110.20	109.90	109.77
July 2, 2009	109.71	110.12	109.82	109.69
October 8, 2009	109.68	110.10	109.79	109.67
January 4, 2010	109.63	110.04	109.74	109.61
April 1, 2010	109.59	110.00	109.70	109.58
July 1, 2010	109.56	109.97	109.68	109.55
October 4, 2010	109.50	109.91	109.62	109.49
December 20, 2010	109.51	109.92	109.63	109.50
January 3, 2011	109.49	109.90	109.61	109.47
April 1, 2011	109.46	109.87	109.58	109.45

\\schute\calico\ClayTop.xls; updated 4/13/11 by ler

Notes:

1. Vertical Datum based on feet NGVD 1929.
2. WMI extended the rods of the settling plates.
3. Benchmarks used in March 30, 2000 survey were found to have settled; elevations shown for July 5, 2000 were tied into new benchmarks.

Settlement of Pump Station B Sump



SURVEYOR'S REPORT

Southeast Landfill Hillsborough County, Florida

Prepared for:



Prepared by:



PICKETT & ASSOCIATES PROJECT NO.: 12131
TITLE/TYPE OF SURVEY: SPECIFIC PURPOSE SURVEY
DATE OF SURVEY: 04/01/11
DATE OF THIS REPORT: 04/07/11

***NOTE: THIS REPORT IS NOT VALID WITHOUT THE SIGNATURE AND ORIGINAL
RAISED SEAL OF A FLORIDA LICENSED SURVEYOR AND MAPPER.***

PROJECT DESCRIPTION

The quarterly Specific Purpose Survey was prepared to show the existing conditions of the ground pipes coming from the vault located at the Hillsborough County Southeast Landfill.

PIPE	NORTHING	EASTING	ELEVATION	DESCRIPTION
SW	1251010.3	596333.8	191.84'	Top of 4" pipe
			191.57'	Top of 1" pipe
SE	1251004.7	596339.5	191.88'	Top of 4" pipe
			191.76'	Top of 1" pipe
NE	1251014.2	596344.4	191.87'	Top of 4" pipe
			191.70'	Top of 1" pipe
NW	1251014.5	596336.5	191.36'	Top of 4" pipe
			191.56'	Top of 1" pipe

METHODOLOGY AND ACCURACY STATEMENT: The top of the 4" pipe located at the northwest corner of the vault was used as a benchmark and surveyed with RTK GPS. RTK points were observed at least twice with a new initialization between each observation and the RTK shots were taken at intervals greater than 5 minutes. This point has an estimated horizontal positional accuracy of 0.08' or less and a vertical positional accuracy of 0.10' or less.

DATUM:

HORIZONTAL: North and the Coordinates are based on the West Zone of the Florida State Plane Coordinate System, NAD 83 1990 adjustment and are based upon provided control referenced to Hillsborough County Horizontal Control Monument LW-H (PID AG8963) and BY-E (PID AG8747).

VERTICAL: Elevations are to National Geodetic Vertical Datum of 1929 and are based upon provided control referenced to Hillsborough County Horizontal Control Monument VR-B (PID AG9078), elevation is 103.08' from Hillsborough County's Vertical Control Network.

Sherry A. Grymko

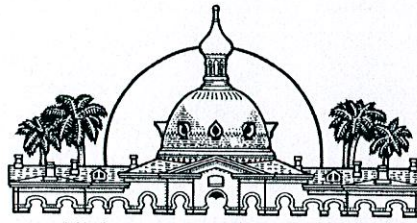
Sherry A. Grymko, P.S.M.
Florida Registration No. 6648
Pickett & Associates, Inc.
Florida Registration No. 364

04/01/11

Survey Date

BOARD OF COUNTY COMMISSIONERS

Kevin Beckner
Victor D. Crist
Ken Hagan
Al Higginbotham
Lesley "Les" Miller, Jr.
Sandra L. Murman
Mark Sharpe



Hillsborough County
Florida

Office of the County Administrator
Michael S. Merrill

Dept. Of Environmental Protection

APR 19 2011

Southwest District

ADMINISTRATORS

Lucia E. Garsys
Eric R. Johnson
Edith M. Stewart
J. Eugene Gray, Acting
Sharon D. Subadan, Interim
Mark J. Thornton, Interim

MEMORANDUM

DATE: February 14, 2011

TO: Patricia Berry, Section Manager, Solid Waste Management Division

FROM: *jer* Larry Ruiz, General Manager III, Solid Waste Management Division

SUBJECT: Top of Phosphatic Clay Liner Elevations, Southeast County Landfill

The Hillsborough County Solid Waste Management Department staff has received and reviewed the attached Report of Survey from Pickett & Associates, Inc. (Pickett) dated December 20, 2010 and January 3, 2011. The elevations provided by Pickett are used to calculate the approximate elevations of the top of the phosphatic clay liner at the Pump Station B Sump location. As shown on Table 1, the Pump Station B sump continued to show a slight downward change in elevation for this quarter.

Please advise should you have any questions concerning the information provided.

Attachments

**TABLE 1. APPROXIMATE TOP OF CLAY ELEVATIONS
PUMP STATION B SUMP
SOUTHEAST COUNTY LANDFILL**

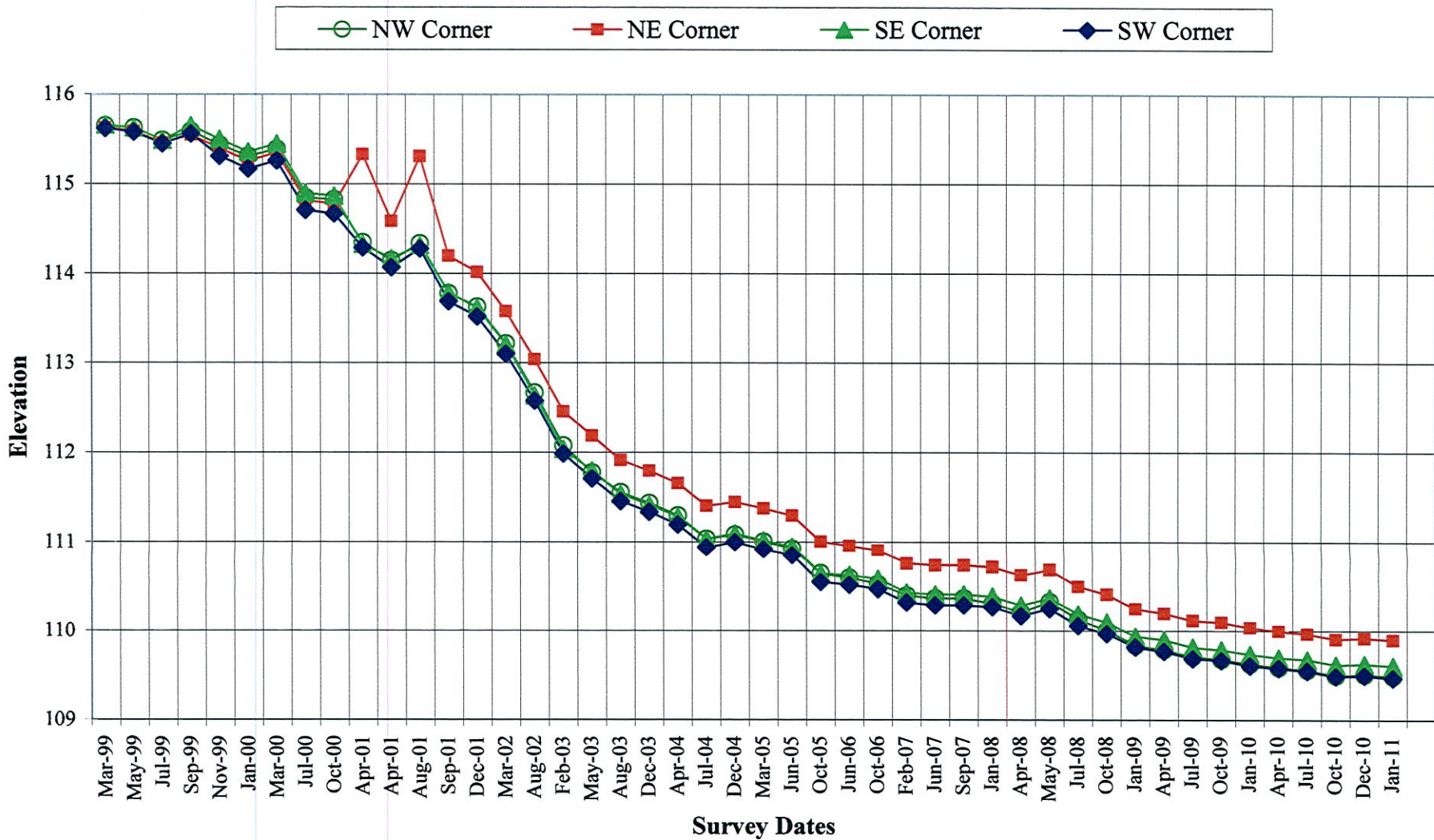
DATE	NW	NE	SE	SW
March 3, 1999	115.65	115.63	115.66	115.62
May 4, 1999	115.63	115.59	115.63	115.58
July 28, 1999	115.49	115.46	115.49	115.45
September 17, 1999 ²	115.59	115.55	115.65	115.56
November 11, 1999	115.44	115.40	115.50	115.31
January 3, 2000	115.31	115.26	115.36	115.17
March 30, 2000	115.39	115.35	115.45	115.26
July 5, 2000 ³	114.85	114.82	114.90	114.71
October 5, 2000	114.83	114.78	114.87	114.67
April 6, 2001	114.35	115.33	114.33	114.29
April 18, 2001 ²	114.15	114.59	114.17	114.07
August 8, 2001	114.34	115.31	114.32	114.28
September 19, 2001 ²	113.78	114.20	113.79	113.69
December 18, 2001	113.63	114.02	113.62	113.52
March 29, 2002	113.22	113.58	113.21	113.10
August 15, 2002 ²	112.67	113.04	112.64	112.58
February 1, 2003	112.08	112.46	112.04	111.99
May 1, 2003	111.78	112.19	111.80	111.71
September 2, 2003	111.56	111.92	111.54	111.46
December 1, 2003	111.44	111.80	111.42	111.34
April 1, 2004	111.30	111.66	111.29	111.20
July 31, 2004	111.04	111.41	111.04	110.94
December 1, 2004	111.09	111.45	111.10	111.00
March 1, 2005	111.01	111.38	111.02	110.92
June 2, 2005	110.93	111.30	110.95	110.85
October 1, 2005	110.65	111.01	110.65	110.55
February 1, 2006	110.67	111.03	110.69	110.58
June 6, 2006	110.60	110.96	110.63	110.52
October 2, 2006	110.53	110.91	110.59	110.47
February 1, 2007	110.40	110.76	110.43	110.32
June 1, 2007	110.37	110.74	110.41	110.29
September 1, 2007 ²	110.37	110.74	110.41	110.29
January 2, 2008	110.31	110.72	110.39	110.27
April 1, 2008	110.21	110.63	110.29	110.17
May 8, 2008 ²	110.33	110.69	110.37	110.25
July 1, 2008	110.13	110.50	110.19	110.06
October 1, 2008	110.01	110.41	110.10	109.97
January 2, 2009	109.84	110.25	109.94	109.82
April 1, 2009	109.79	110.20	109.90	109.77
July 2, 2009	109.71	110.12	109.82	109.69
October 8, 2009	109.68	110.10	109.79	109.67
January 4, 2010	109.63	110.04	109.74	109.61
April 1, 2010	109.59	110.00	109.70	109.58
July 1, 2010	109.56	109.97	109.68	109.55
October 4, 2010	109.50	109.91	109.62	109.49
December 20, 2010	109.51	109.92	109.63	109.50
January 3, 2011	109.49	109.90	109.61	109.47

l:\achate\cales\ClayTop.xls, updated 2/14/11 by jcr

Notes:

1. Vertical Datum based on feet NGVD 1929.
2. WMI extended the rods of the settling plates.
3. Benchmarks used in March 30, 2000 survey were found to have settled; elevations shown for July 5, 2000 were tied into new benchmarks.

Settlement of Pump Station B Sump



SURVEYOR'S REPORT

Southeast Landfill Hillsborough County, Florida

Prepared for:



Prepared by:



PICKETT & ASSOCIATES PROJECT NO.: 12131
TITLE/TYPE OF SURVEY: SPECIFIC PURPOSE SURVEY
DATE OF SURVEY: 01/03/11
DATE OF THIS REPORT: 01/07/11

***NOTE: THIS REPORT IS NOT VALID WITHOUT THE SIGNATURE AND ORIGINAL
RAISED SEAL OF A FLORIDA LICENSED SURVEYOR AND MAPPER.***

PROJECT DESCRIPTION

The quarterly Specific Purpose Survey was prepared to show the existing conditions of the ground pipes coming from the vault located at the Hillsborough County Southeast Landfill.

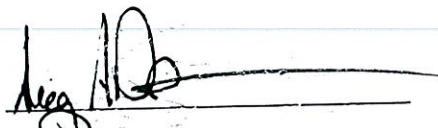
PIPE	NORTHING	EASTING	ELEVATION	DESCRIPTION
SW	1251010.3	596333.8	191.87'	Top of 4" pipe
			191.59'	Top of 1" pipe
SE	1251004.7	596339.5	191.91'	Top of 4" pipe
			191.79'	Top of 1" pipe
NE	1251014.2	596344.4	191.90'	Top of 4" pipe
			191.73'	Top of 1" pipe
NW	1251014.5	596336.5	191.40'	Top of 4" pipe
			191.59'	Top of 1" pipe

METHODOLOGY AND ACCURACY STATEMENT: The top of the 4" pipe located at the northwest corner of the vault was used as a benchmark and surveyed with RTK GPS. RTK points were observed at least twice with a new initialization between each observation and the RTK shots were taken at intervals greater than 5 minutes. This point has an estimated horizontal positional accuracy of 0.08' or less and a vertical positional accuracy of 0.10' or less.

DATUM:

HORIZONTAL: North and the Coordinates are based on the West Zone of the Florida State Plane Coordinate System, NAD 83 1990 adjustment and are based upon provided control referenced to Hillsborough County Horizontal Control Monument LW-H (PID AG8963) and BY-E (PID AG8747).

VERTICAL: Elevations are to National Geodetic Vertical Datum of 1929 and are based upon provided control referenced to Hillsborough County Horizontal Control Monument VR-B (PID AG9078), elevation is 103.08' from Hillsborough County's Vertical Control Network.



Gregory A. Prather, P.S.M.
 Florida Registration No. 5135
 Pickett & Associates, Inc.
 Florida Registration No. 364

1/3/11
 Survey Date



PICKETT

SURVEYING & PHOTOGRAMMETRY

REPORT OF SURVEY

NOTE: THIS REPORT IS NOT VALID WITHOUT THE SIGNATURE AND ORIGINAL RAISED SEAL OF A FLORIDA LICENSED SURVEYOR AND MAPPER.

PICKETT & ASSOCIATES, PROJECT NO.: 12131-1

DRAWING NO: N/A

TITLE/TYPE OF SURVEY: SPECIFIC PURPOSE SURVEY

DATE OF SURVEY: 12/20/10

SUBJECT: SOUTHEAST HILLSBOROUGH COUNTY LANDFILL SITE

CLIENT: WASTE MANAGEMENT, INC. OF FLORIDA

PIPE	NORTHING	EASTING	ELEVATION	DESCRIPTION
SW	1251010.3	596333.8	191.89'	Top of 4" pipe
			191.62'	Top of 1" pipe
SE	1251004.7	596339.5	191.93'	Top of 4" pipe
			191.81'	Top of 1" pipe
NE	1251014.2	596344.4	191.93'	Top of 4" pipe
			191.75'	Top of 1" pipe
NW	1251014.5	596336.5	191.42'	Top of 4" pipe
			191.61'	Top of 1" pipe

METHODOLOGY AND ACCURACY STATEMENT: The top of the 4" pipe located at the northwest corner of the vault was used as a benchmark and surveyed with RTK GPS and was observed at least twice with a new initialization between each observation. Observation time at that point did not exceed 10 minutes. This point has an estimated horizontal positional accuracy of 0.08' or less and a vertical positional accuracy of 0.10' or less.

DATUM:

HORIZONTAL: North and the Coordinates are based on the West Zone of the Florida State Plane Coordinate System, NAD 83 1990 adjustment and are based upon provided control referenced to Hillsborough County Horizontal Control Monument LW-H (PID AG8963) and BY-E (PID AG8747).

VERTICAL: Elevations are to National Geodetic Vertical Datum of 1929 and are based upon provided control referenced to Hillsborough County Horizontal Control Monument VR-B (PID AG9078), elevation is 103.08' from Hillsborough County's Vertical Control Network.

PICKETT & ASSOCIATES, INC.

NOTES:

The quarterly Specific Purpose Survey was prepared to show the existing conditions of the above ground pipes coming from the vault located at the above referenced landfill.

Sherry A. Kopec

Sherry A. Kopec, P.S.M.
Florida Registration No. 6648
Pickett & Associates, Inc.
Florida Registration No. 364

12/20/10

Survey Date

