



Dept. of Environmental
Protection
APR 19 2011
Southwest District

April 15, 2011

Mr. John Power
Solid Waste Manager
14230 Hays Road
Spring Hill, FL34610

Subject: Annual Site Life Estimates for West Pasco Class III Landfill, Pasco County, Florida
Permit No 26254-001-SO/T3, WACS No SWD/51/45799

Dear Mr. Power:

We are submitting four copies of the revised site life estimate for the subject landfill. Please let me know if you have any questions.

Sincerely

Rajendra D. Vaidya, Ph.D., P.E.
Environmental Engineer
Camp Dresser & McKee Inc.

c: Mr. John Power, Pasco County (four copies)
Aamod Sonawane, CDM



Pasco County Utilities

**West Pasco Class III Landfill
Site Life Estimate**

**14230 Hays Road
Spring Hill, Pasco County, Florida**

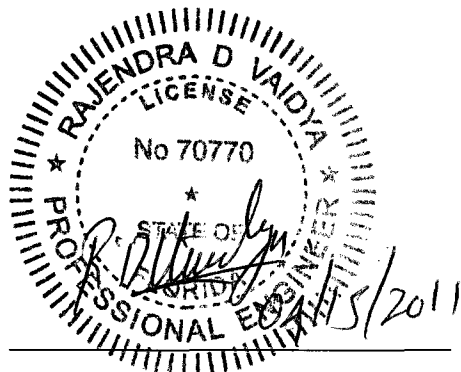
April 2011

Prepared for:

Pasco County Utilities
7530 Little Road
New Port Richey, FL 34654

Prepared by:

Camp Dresser & McKee Inc.
1715 North Westshore Blvd., Suite 875
Tampa, Florida 33607



Rajendra D. Vaidya, Ph.D., P.E.
Florida-Registered
Professional Engineer No. 70770



CDM Calculation Form (Excel)	Job # 6104-76894.Lbr	Calc By: <u>RV</u>
Client: <u>Pasco County</u>		Date: <u>4/12/11</u>
Project: <u>West Pasco Class III</u>		Checked By: <u>Paul H</u>
Detail: <u>Landfill Site Life</u>		Date: <u>4/14/11</u>
		Revised 4/15/2011

Landfill Capacity/Remaining Life Calculation

1.0 Purpose/Objective
Calculate the remaining life of West Pasco Class III Landfill.

2.0 Procedure
(a) Calculate the remaining capacity consistent with permitted build out, using County provided topographic survey.
(b) Estimate remaining air-space from existing topographic survey and account for final cover.
(c) Estimate remaining site-life based on historical disposal rate in the landfill.

3.0 References/Data Sources
(a) Topographical Survey of the landfill updated March 17, 2011 (attached).
(b) Permitted buildout of landfill from Operations Permit Renewal (2007).

4.0 Assumptions and Limitations
(a) Assume a steady disposal rate of 2524.5 tons/year (tpy); say 2525 tpy which is the average landfilled tonnage from September 2008 to December 2010 per Attachment 1. Air space from the top 3 feet of buildout is deducted from the available air-space as a provision for final cover.
(b) Assume a density of 1000 lbs/CY for Class III waste
(c) Assume a weekly cover of 6 inches for approximate 5 foot lifts. Weekly cover is approximately 0.5 ft/ 5 ft = 10% by volume.
(d) Permitted elevation is 75 NGVD at 4H:1V side slopes with 3% slope from 75 ft NGVD to a top EL of 79.26 ft NGVD.
(e) Base elevation = 55 feet NGVD for top of side berms and average of 47 feet NGVD for saw tooth bottom.

5.0 Calculations

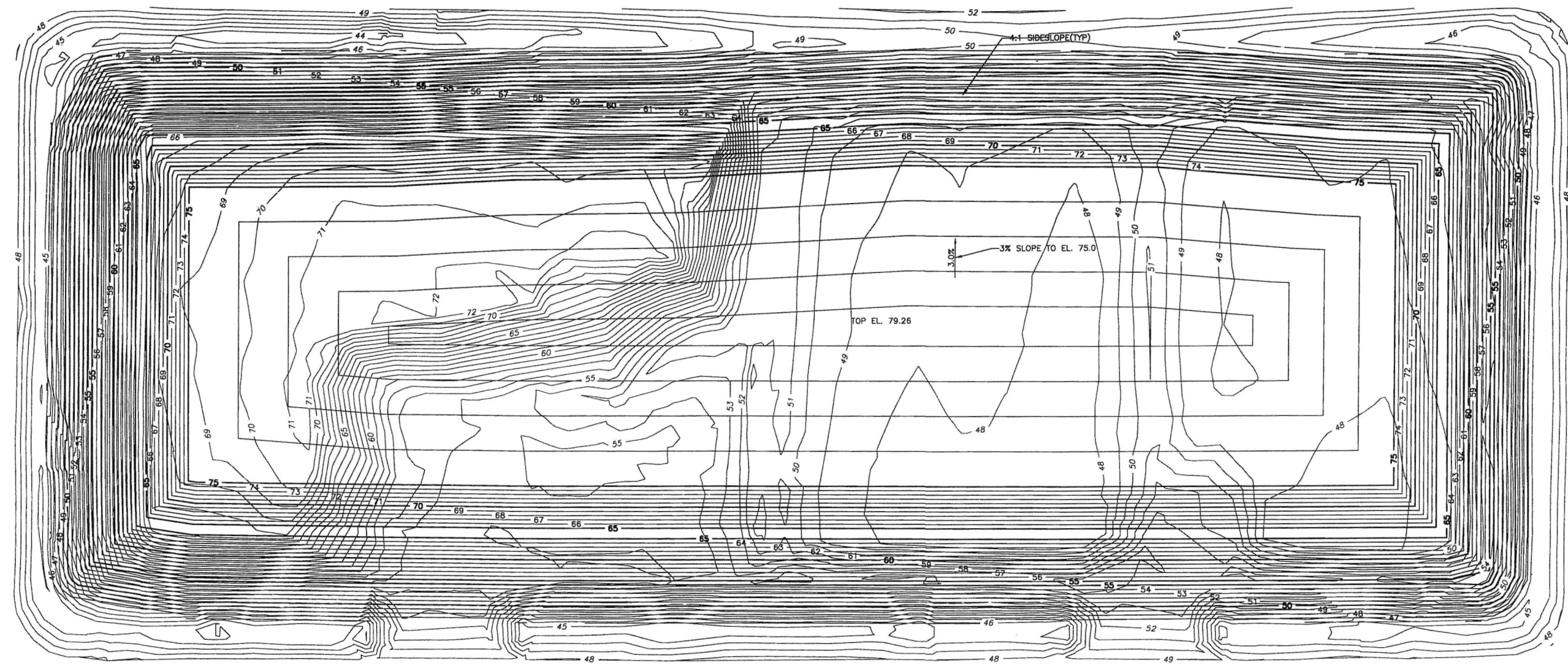
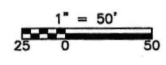
(a) Air space remaining for West Pasco Class III Landfill (from AutoCAD computations) from the attached April 2011 survey = 277,489 CY

(b) Divide remaining volume by disposal rate

Assume density of C & D =	1,000 lbs/C.Y
Estimated Disposal rate =	2,525 tons/year
Estimated air space used=	5,050 CY/year
Assume 10 % volume for weekly cover=	505 CY/year
Total estimated air space used =	5,555 CY/year
Estimated remaining site life =	49.95 years

6.0 Conclusions/Results
The remaining life of West Pasco Class III is approximately 50 years from March 2011.

7.0 Comments
The remaining site life estimate has increased from about 45 years from May 2010 to about 50 years from March 2011 due to a reduction in waste disposal quantity .



LEGEND
 --- 45 --- -EXISTING CONTOUR
 --- 45 --- 45 --- -PROPOSED CONTOUR

PLAN

NOTES:

1. AVAILABLE AIR SPACE IS CALCULATED USING AUTOCAD CIVIL 3D USING THE EXISTING TOPOGRAPHIC SURVEY DATED APRIL 2010, AND THE PERMITTED BUILD OUT PROFILE.
2. ESTIMATE IS BASED ON THE APPROXIMATE LOCATION OF TOE OF WASTE FROM THE TOPOGRAPHIC SURVEY.
3. AIR SPACE REMAINING = 277,489 C.Y.



Xref to: [CDM_2436CLASS3] Images: []
 Filename: C:\cdm\hoffman\hoffman\j019942\CD01ASTPL.dwg Last saved by: HOFFMAN Time: 6/9/2010 10:15:40 AM

REV. NO.	DATE	DRWN	CHKD	REMARKS

DESIGNED BY: R. VAIDYA
 DRAWN BY: B. CHAPMAN
 SHEET CHK'D BY: J. HOFFMAN
 CROSS CHK'D BY: P. CHENEVEY
 APPROVED BY: J. LADNER
 DATE: APRIL 2011

CDM
 Camp Dresser & McKee
 1715 North Westshore Blvd.
 Tampa, FL 33607
 Tel: (813) 281-2900
 FL COA No. EB-0000020
 consulting • engineering • construction • operations

PASCO COUNTY, FLORIDA
 WEST PASCO COUNTY
 CLASS-III COUNTY LANDFILL

SITE LIFE ESTIMATE

PROJECT NO. 6104-6635B
 FILE NAME: 110001ASTPL
 SHEET NO.
C-1A

Attachment-1 Landfilled Tonnages for West

Pasco County Landfills

(July 2008 to December 2010)

**PASCO COUNTY UTILITIES - SOLID WASTE
TONNAGE SUMMARY FROM COUNTY DATA**

Period	West Pasco Class III	West Pasco Class I - ASH	West Pasco Class I-SW
Jul-08	207.94	7,842.84	349.88
Aug-08	195.97	7,686.09	226.31
Sep-08	179.29	7,762.61	454.89
Oct-08	146.57	6,658.72	164.66
Nov-08	170.27	6,493.18	129.68
Dec-08	156.73	7,869.64	85.42
Jan-09	182.17	7,102.45	110.23
Feb-09	289.76	6,939.37	66.14
Mar-09	266.94	5,046.67	97.07
Apr-09	184.91	7,662.90	200.87
May-09	252.66	7,428.22	47.32
Jun-09	213.07	7,840.18	0.00
Jul-09	164.35	5,920.28	17.22
Aug-09	229.14	7,131.12	21.30
Sep-09	239.52	7,141.74	0.00
Oct-09	202.31	4,986.25	33.48
Nov-09	154.06	5,685.49	230.69
Dec-09	160.23	8,889.75	1,147.67
Jan-10	150.37	6,716.77	2.91
Feb-10	330.30	6,700.33	0.00
Mar-10	364.71	7,149.46	1.27
Apr-10	253.1	4223.04	62.51
May-10	223.54	9038.49	54.35
Jun-10	194.15	7315.29	93.44
Jul-10	248.09	7407.31	41.56
Aug-10	220.64	7295.74	134.02
Sep-10	198.4	7326.15	137.44
Oct-10	210.05	4160.13	47.54
Nov-10	189.73	7310.48	87.91
Dec-10	132.32	8022.12	41.53
Total landfilled (tons)	6,311.3	208,752.8	4,087.3
Average (tons/month)	210.4	6,958.4	136.2
Average (tons/year)	2,524.5	83,501.1	1,634.9

PASCO COUNTY UTILITIES - SOLID WASTE
TONNAGE SUMMARY - 2008
 Quarter Ending September 30, 2008

MATERIAL	West Pasco Class III Tonnage			West Pasco Class I Tonnage			WTE Tonnage			East Pasco Class I Tonnage			EPTS Tonnage		
	JULY	AUGUST	SEPTEMBER	JULY	AUGUST	SEPTEMBER	JULY	AUGUST	SEPTEMBER	JULY	AUGUST	SEPTEMBER	JULY	AUGUST	SEPTEMBER
1 Household Waste	0.00	0.00	0.00	0.00	0.00	0.00	30,029.23	26,172.21	24,621.48	0.00	0.00	0.00	5,533.47	4,498.73	3,938.31
2 Commercial Waste	0.00	0.00	0.00	0.00	0.00	0.00	2,031.25	1,754.72	1,804.27	0.00	0.00	0.00	0.00	0.00	0.00
3 Ash Residue **	0.00	0.00	0.00	7,842.84	7,686.09	7,762.61	0.00	0.00	0.00	0.00	0.00	0.00	0.00	0.00	0.00
4 Incinerator By-Pass Waste	0.00	0.00	0.00	0.00	0.00	0.00	0.00	0.00	0.00	0.00	0.00	0.00	0.00	0.00	0.00
5 Construction & Demolition Debris	207.94	195.97	179.29	0.00	0.00	0.00	431.63	376.08	355.74	0.00	0.00	0.00	113.04	91.92	80.46
6 Treated Biomedical Waste	0.00	0.00	0.00	0.00	0.00	0.00	0.00	0.00	0.00	0.00	0.00	0.00	0.00	0.00	0.00
7 Agricultural Waste	0.00	0.00	0.00	0.00	0.00	0.00	130.50	113.70	107.56	0.00	0.00	0.00	0.00	0.00	0.00
8 Industrial Waste	0.00	0.00	0.00	0.00	0.00	0.00	2.36	1.87	0.00	0.00	0.00	0.00	0.00	0.00	0.00
9 Yard Trash - IN	276.79	352.45	201.43	0.00	0.00	0.00	0.00	0.00	0.00	0.00	0.00	0.00	2.83	2.30	2.01
10 Sewage Sludge	0.00	0.00	0.00	349.88	226.31	454.89	0.00	0.00	0.00	0.00	0.00	0.00	0.00	0.00	0.00
11 Industrial Sludge	0.00	0.00	0.00	0.00	0.00	0.00	0.00	0.00	0.00	0.00	0.00	0.00	0.00	0.00	0.00
12 Water/Air Treatment Sludges	0.00	0.00	0.00	0.00	0.00	0.00	0.00	0.00	0.00	0.00	0.00	0.00	0.00	0.00	0.00
13 Waste Tires - IN	65.31	65.27	76.01	0.00	0.00	0.00	0.00	7.45	0.00	0.00	0.00	0.00	2.74	3.22	2.01
13 Waste Tires - Tires Chipped	0.00	158.32	0.00	0.00	0.00	0.00	0.00	0.00	0.00	0.00	0.00	0.00	0.00	0.00	0.00
Total Tonnage Weighted IN	550.04	772.01	456.73	8,192.72	7,912.40	8,217.50	32,624.97	28,426.03	26,889.05	0.00	0.00	0.00	5,652.08	4,596.17	4,022.79
LESS: Yard Trash Stored	(276.79)	(352.45)	(201.43)	0.00	0.00	0.00	0.00	0.00	0.00	0.00	0.00	0.00	0.00	0.00	0.00
Yard Trash Mulched	0.00	0.00	0.00	0.00	0.00	0.00	0.00	0.00	0.00	0.00	0.00	0.00	0.00	0.00	0.00
Yard Trash Mulched & Landscaping	0.00	0.00	0.00	0.00	0.00	0.00	0.00	0.00	0.00	0.00	0.00	0.00	0.00	0.00	0.00
Yard Trash Mulched & to WTE	0.00	0.00	0.00	0.00	0.00	0.00	0.00	0.00	0.00	0.00	0.00	0.00	0.00	0.00	0.00
Waste Tires Stored/Removed	(65.31)	(216.14)	(76.01)	0.00	0.00	0.00	0.00	0.00	0.00	0.00	0.00	0.00	0.00	0.00	0.00
Waste Tires Moved to WTE	0.00	(7.45)	0.00	0.00	0.00	0.00	0.00	0.00	0.00	0.00	0.00	0.00	0.00	0.00	0.00
Tons Moved to WTE	0.00	0.00	0.00	0.00	0.00	0.00	0.00	0.00	0.00	0.00	0.00	0.00	0.00	0.00	0.00
Total Tonnage Landfilled	207.94	195.97	179.29	8,192.72	7,912.40	8,217.50				0.00	0.00	0.00			
Total Tonnage Processed by WTE							32,624.97	28,426.03	26,889.05						
Total Tonnage Received @ Transfer Station													5,652.08	4,596.17	4,022.79
ASH CELL **				7,842.84	7,686.09	7,762.61									
SOLID WASTE CELL				349.88	226.31	454.89									

@@ = Yard Waste is Mulched and Provided to the residents Free of Charge as "Landscaping Mulch."
 ** = Ash Residue is the only Material Disposed of in the Ash Landfill.

Dept. of Environmental
 Protection
 APR 19 2011
 Southwest District

PASCO COUNTY UTILITIES - SOLID WASTE
 TONNAGE SUMMARY - 2008
 Quarter Ending December 31, 2008

MATERIAL	West Pasco Class III Tonnage			West Pasco Class I Tonnage			WTE Tonnage			East Pasco Class I Tonnage			EPTS Tonnage		
	OCTOBER	NOVEMBER	DECEMBER	OCTOBER	NOVEMBER	DECEMBER	OCTOBER	NOVEMBER	DECEMBER	OCTOBER	NOVEMBER	DECEMBER	OCTOBER	NOVEMBER	DECEMBER
1 Household Waste	0.00	0.00	0.00	0.00	0.00	0.00	25,477.93	22,003.78	26,090.24	0.00	0.00	0.00	4,574.65	3,787.01	4,510.68
2 Commercial Waste	0.00	0.00	0.00	0.00	0.00	0.00	1,791.92	1,749.72	2,017.08	0.00	0.00	0.00	0.00	0.00	0.00
3 Ash Residue **	0.00	0.00	0.00	6,658.72	6,493.18	7,869.64	0.00	0.00	0.00	0.00	0.00	0.00	0.00	0.00	0.00
4 Incinerator By-Pass Waste	0.00	0.00	0.00	0.00	0.00	0.00	0.00	0.00	0.00	0.00	0.00	0.00	0.00	0.00	0.00
5 Construction & Demolition Debris	146.57	170.27	156.73	0.00	0.00	0.00	367.12	319.95	378.38	0.00	0.00	0.00	93.45	77.38	92.15
6 Treated Biomedical Waste	0.00	0.00	0.00	0.00	0.00	0.00	0.00	0.00	0.00	0.00	0.00	0.00	0.00	0.00	0.00
7 Agricultural Waste	0.00	0.00	0.00	0.00	0.00	0.00	111.00	96.74	114.40	0.00	0.00	0.00	0.00	0.00	0.00
8 Industrial Waste	0.00	0.00	0.00	0.00	0.00	0.00	0.92	0.00	0.17	0.00	0.00	0.00	0.00	0.00	0.00
9 Yard Trash - IN	160.50	237.49	109.93	0.00	0.00	0.00	0.00	0.00	0.00	0.00	0.00	0.00	2.34	1.93	2.30
10 Sewage Sludge	0.00	0.00	0.00	164.66	129.68	85.42	0.00	0.00	0.00	0.00	0.00	0.00	0.00	0.00	0.00
11 Industrial Sludge	0.00	0.00	0.00	0.00	0.00	0.00	0.00	0.00	0.00	0.00	0.00	0.00	0.00	0.00	0.00
12 Water/Air Treatment Sludges	0.00	0.00	0.00	0.00	0.00	0.00	0.00	0.00	0.00	0.00	0.00	0.00	0.00	0.00	0.00
13 Waste Tires - IN	49.67	47.16	115.43	0.00	0.00	0.00	0.00	13.60	0.00	0.00	0.00	0.00	2.27	2.71	2.30
13 Waste Tires - Tires Chipped	0.00	156.41	0.00	0.00	0.00	0.00	0.00	0.00	0.00	0.00	0.00	0.00	0.00	0.00	0.00
Total Tonnage Weighted IN	356.74	611.33	382.09	6,823.38	6,622.86	7,955.06	27,748.88	24,183.79	28,600.27	0.00	0.00	0.00	4,672.71	3,869.03	4,607.44
LESS: Yard Trash Stored	(160.50)	(237.49)	(109.93)	0.00	0.00	0.00	0.00	0.00	0.00	0.00	0.00	0.00	0.00	0.00	0.00
Yard Trash Mulched	0.00	0.00	0.00	0.00	0.00	0.00	0.00	0.00	0.00	0.00	0.00	0.00	0.00	0.00	0.00
Yard Trash Mulched & Landscaping	0.00	0.00	0.00	0.00	0.00	0.00	0.00	0.00	0.00	0.00	0.00	0.00	0.00	0.00	0.00
Yard Trash Mulched & to WTE	0.00	0.00	0.00	0.00	0.00	0.00	0.00	0.00	0.00	0.00	0.00	0.00	0.00	0.00	0.00
Waste Tires Stored/Removed	(49.67)	(189.97)	(115.43)	0.00	0.00	0.00	0.00	0.00	0.00	0.00	0.00	0.00	0.00	0.00	0.00
Waste Tires Moved to WTE	0.00	(13.60)	0.00	0.00	0.00	0.00	0.00	0.00	0.00	0.00	0.00	0.00	0.00	0.00	0.00
Tons Moved to WTE	0.00	0.00	0.00	0.00	0.00	0.00	0.00	0.00	0.00	0.00	0.00	0.00	0.00	0.00	0.00
Total Tonnage Landfilled	146.57	170.27	156.73	6,823.38	6,622.86	7,955.06				0.00	0.00	0.00			
Total Tonnage Processed by WTE							27,748.88	24,183.79	28,600.27						
Total Tonnage Received @ Transfer Station													4,672.71	3,869.03	4,607.44
ASH CELL **				6,658.72	6,493.18	7,869.64									
SOLID WASTE CELL				164.66	129.68	85.42									

@@ = Yard Waste is Mulched and Provided to the residents Free of Charge as "Landscaping Mulch."
 ** = Ash Residue is the only Material Disposed of in the Ash Landfill.

PASCO COUNTY UTILITIES - SOLID WASTE
TONNAGE SUMMARY - 2008
Quarter Ending March 31, 2009

MATERIAL	West Pasco Class III Tonnage			West Pasco Class I Tonnage			WTE Tonnage			East Pasco Class I Tonnage			EPTS Tonnage		
	JANUARY	FEBRUARY	MARCH	JANUARY	FEBRUARY	MARCH	JANUARY	FEBRUARY	MARCH	JANUARY	FEBRUARY	MARCH	JANUARY	FEBRUARY	MARCH
1 Household Waste	0.00	0.00	0.00	0.00	0.00	0.00	25,383.77	22,120.43	22,358.12	0.00	0.00	0.00	5,841.12	5,421.38	6,371.14
2 Commercial Waste	0.00	0.00	0.00	0.00	0.00	0.00	1,763.59	1,732.41	1,836.77	0.00	0.00	0.00	0.00	0.00	0.00
3 Ash Residue **	0.00	0.00	0.00	7,102.45	6,939.37	5,046.67	0.00	0.00	0.00	0.00	0.00	0.00	0.00	0.00	0.00
4 Incinerator By-Pass Waste	0.00	0.00	0.00	0.00	0.00	0.00	0.00	0.00	0.00	0.00	0.00	0.00	0.00	0.00	0.00
5 Construction & Demolition Debris	182.17	289.76	266.94	0.00	0.00	0.00	365.49	321.11	325.79	0.00	0.00	0.00	119.33	110.78	130.16
6 Treated Biomedical Waste	0.00	0.00	0.00	0.00	0.00	0.00	0.00	0.00	0.00	0.00	0.00	0.00	0.00	0.00	0.00
7 Agricultural Waste	0.00	0.00	0.00	0.00	0.00	0.00	110.50	97.08	98.50	0.00	0.00	0.00	0.00	0.00	0.00
8 Industrial Waste	0.00	0.00	0.00	0.00	0.00	0.00	2.70	0.12	5.65	0.00	0.00	0.00	0.00	0.00	0.00
9 Yard Trash - IN	108.84	165.92	231.67	0.00	0.00	0.00	0.00	0.00	0.00	0.00	0.00	0.00	2.98	2.77	3.25
10 Sewage Sludge	0.00	0.00	0.00	110.23	66.14	97.07	0.00	0.00	0.00	0.00	0.00	0.00	0.00	0.00	0.00
11 Industrial Sludge	0.00	0.00	0.00	0.00	0.00	0.00	0.00	0.00	0.00	0.00	0.00	0.00	0.00	0.00	0.00
12 Water/Air Treatment Sludges	0.00	0.00	0.00	0.00	0.00	0.00	0.00	0.00	0.00	0.00	0.00	0.00	0.00	0.00	0.00
13 Waste Tires - IN	54.61	40.98	61.32	0.00	0.00	0.00	0.00	0.00	0.00	0.00	0.00	0.00	2.89	3.88	3.25
13 Waste Tires - Tires Chipped	0.00	0.00	0.00	0.00	0.00	0.00	0.00	0.00	0.00	0.00	0.00	0.00	0.00	0.00	0.00
Total Tonnage Weighted IN	345.62	496.66	559.93	7,212.68	7,005.51	5,143.74	27,626.06	24,271.15	24,624.83	0.00	0.00	0.00	5,966.32	5,538.80	6,507.80
LESS: Yard Trash Stored	(108.84)	(165.92)	(231.67)	0.00	0.00	0.00	0.00	0.00	0.00	0.00	0.00	0.00	0.00	0.00	0.00
Yard Trash Mulched	0.00	312.50	0.00	0.00	0.00	0.00	0.00	0.00	0.00	0.00	0.00	0.00	0.00	0.00	0.00
Yard Trash Mulched & Landscaping	0.00	(312.50)	0.00	0.00	0.00	0.00	0.00	0.00	0.00	0.00	0.00	0.00	0.00	0.00	0.00
Yard Trash Mulched & to WTE	0.00	0.00	0.00	0.00	0.00	0.00	0.00	0.00	0.00	0.00	0.00	0.00	0.00	0.00	0.00
Waste Tires Stored/Removed	(54.61)	(40.98)	(61.32)	0.00	0.00	0.00	0.00	0.00	0.00	0.00	0.00	0.00	0.00	0.00	0.00
Waste Tires Moved to WTE	0.00	0.00	0.00	0.00	0.00	0.00	0.00	0.00	0.00	0.00	0.00	0.00	0.00	0.00	0.00
Tons Moved to WTE	0.00	0.00	0.00	0.00	0.00	0.00	0.00	0.00	0.00	0.00	0.00	0.00	0.00	0.00	0.00
Total Tonnage Landfilled	182.17	289.76	266.94	7,212.68	7,005.51	5,143.74				0.00	0.00	0.00			
Total Tonnage Processed by WTE							27,626.06	24,271.15	24,624.83						
Total Tonnage Received @ Transfer Station													5,966.32	5,538.80	6,507.80
ASH CELL **				7,102.45	6,939.37	5,046.67									
SOLID WASTE CELL				110.23	66.14	97.07									

@@ = Yard Waste is Mulched and Provided to the residents Free of Charge as "Landscaping Mulch."
 ** = Ash Residue is the only Material Disposed of in the Ash Landfill.

PASCO COUNTY UTILITIES - SOLID WASTE
TONNAGE SUMMARY - 2008
Quarter Ending June 30, 2009

MATERIAL	West Pasco Class III Tonnage			West Pasco Class I Tonnage			WTE Tonnage			East Pasco Class I Tonnage			EPTS Tonnage		
	APRIL	MAY	JUNE	APRIL	MAY	JUNE	APRIL	MAY	JUNE	APRIL	MAY	JUNE	APRIL	MAY	JUNE
1 Household Waste	0.00	0.00	0.00	0.00	0.00	0.00	21,571.73	22,608.36	24,960.18	0.00	0.00	0.00	6,051.14	5,373.41	5,432.78
2 Commercial Waste	0.00	0.00	0.00	0.00	0.00	0.00	1,907.72	1,752.32	1,924.85	0.00	0.00	0.00	0.00	0.00	0.00
3 Ash Residue **	0.00	0.00	0.00	7,662.90	7,428.22	7,840.18	0.00	0.00	0.00	0.00	0.00	0.00	0.00	0.00	0.00
4 Incinerator By-Pass Waste	0.00	0.00	0.00	0.00	0.00	0.00	0.00	0.00	0.00	0.00	0.00	0.00	0.00	0.00	0.00
5 Construction & Demolition Debris	184.91	252.66	213.07	0.00	0.00	0.00	316.08	338.00	361.95	0.00	0.00	0.00	123.62	109.80	110.99
6 Treated Biomedical Waste	0.00	0.00	0.00	0.00	0.00	0.00	0.00	0.00	0.00	0.00	0.00	0.00	0.00	0.00	0.00
7 Agricultural Waste	0.00	0.00	0.00	0.00	0.00	0.00	95.56	102.19	109.43	0.00	0.00	0.00	0.00	0.00	0.00
8 Industrial Waste	0.00	0.00	0.00	0.00	0.00	0.00	0.00	0.00	1.97	0.00	0.00	0.00	0.00	0.00	0.00
9 Yard Trash - IN	212.02	248.03	170.94	0.00	0.00	0.00	0.00	425.03	0.00	0.00	0.00	0.00	3.09	2.74	2.77
10 Sewage Sludge	0.00	0.00	0.00	200.87	47.32	0.00	0.00	0.00	0.00	0.00	0.00	0.00	0.00	0.00	0.00
11 Industrial Sludge	0.00	0.00	0.00	0.00	0.00	0.00	0.00	0.00	0.00	0.00	0.00	0.00	0.00	0.00	0.00
12 Water/Air Treatment Sludges	0.00	0.00	0.00	0.00	0.00	0.00	0.00	0.00	0.00	0.00	0.00	0.00	0.00	0.00	0.00
13 Waste Tires - IN	63.46	57.70	66.91	0.00	0.00	0.00	0.00	321.76	0.00	0.00	0.00	0.00	3.00	3.84	2.77
13 Waste Tires - Tires Chipped	0.00	420.71	0.00	0.00	0.00	0.00	0.00	0.00	0.00	0.00	0.00	0.00	0.00	0.00	0.00
Total Tonnage Weighted IN	460.39	979.10	450.92	7,863.77	7,475.54	7,840.18	23,891.09	25,547.66	27,358.38	0.00	0.00	0.00	6,180.84	5,489.79	5,549.32
LESS: Yard Trash Stored	(212.02)	(248.03)	(170.94)	0.00	0.00	0.00	0.00	0.00	0.00	0.00	0.00	0.00	0.00	0.00	0.00
Yard Trash Mulched	0.00	530.75	0.00	0.00	0.00	0.00	0.00	0.00	0.00	0.00	0.00	0.00	0.00	0.00	0.00
Yard Trash Mulched & Landscaping	0.00	(105.72)	0.00	0.00	0.00	0.00	0.00	0.00	0.00	0.00	0.00	0.00	0.00	0.00	0.00
Yard Trash Mulched & to WTE	0.00	(425.03)	0.00	0.00	0.00	0.00	0.00	0.00	0.00	0.00	0.00	0.00	0.00	0.00	0.00
Waste Tires Stored/Removed	(63.46)	(156.65)	(66.91)	0.00	0.00	0.00	0.00	0.00	0.00	0.00	0.00	0.00	0.00	0.00	0.00
Waste Tires Moved to WTE	0.00	(321.76)	0.00	0.00	0.00	0.00	0.00	0.00	0.00	0.00	0.00	0.00	0.00	0.00	0.00
Tons Moved to WTE	0.00	0.00	0.00	0.00	0.00	0.00	0.00	0.00	0.00	0.00	0.00	0.00	0.00	0.00	0.00
Total Tonnage Landfilled	184.91	252.66	213.07	7,863.77	7,475.54	7,840.18				0.00	0.00	0.00			
Total Tonnage Processed by WTE							23,891.09	25,547.66	27,358.38						
Total Tonnage Received @ Transfer Station													6,180.84	5,489.79	5,549.32
ASH CELL **				7,662.90	7,428.22	7,840.18									
SOLID WASTE CELL				200.87	47.32	0.00									

@@ = Yard Waste is Mulched and Provided to the residents Free of Charge as "Landscaping Mulch."
 ** = Ash Residue is the only Material Disposed of in the Ash Landfill.

PASCO COUNTY UTILITIES - SOLID WASTE
TONNAGE SUMMARY - 2009
Quarter Ending September 30, 2009

MATERIAL	West Pasco Class III Tonnage			West Pasco Class I Tonnage			WTE Tonnage			East Pasco Class I Tonnage			EPTS Tonnage			
	JULY	AUGUST	SEPTEMBER	JULY	AUGUST	SEPTEMBER	JULY	AUGUST	SEPTEMBER	JULY	AUGUST	SEPTEMBER	JULY	AUGUST	SEPTEMBER	
1 Household Waste	0.00	0.00	0.00	0.00	0.00	0.00	25,173.13	25,218.68	24,813.57	0.00	0.00	0.00	5,406.57	5,194.89	5,220.20	
2 Commercial Waste	0.00	0.00	0.00	0.00	0.00	0.00	1,932.39	1,758.66	1,751.38	0.00	0.00	0.00	0.00	0.00	0.00	
3 Ash Residue **	0.00	0.00	0.00	5,920.28	7,131.12	7,141.74	0.00	0.00	0.00	0.00	0.00	0.00	0.00	0.00	0.00	
4 Incinerator By-Pass Waste	0.00	0.00	0.00	0.00	0.00	0.00	0.00	0.00	0.00	0.00	0.00	0.00	0.00	0.00	0.00	
5 Construction & Demolition Debris	164.35	229.14	239.52	#####	0.00	0.00	364.94	363.20	357.63	0.00	0.00	0.00	110.45	106.15	106.64	
6 Treated Biomedical Waste	0.00	0.00	0.00	0.00	0.00	0.00	0.00	0.00	0.00	0.00	0.00	0.00	0.00	0.00	0.00	
7 Agricultural Waste	0.00	0.00	0.00	0.00	0.00	0.00	110.34	109.81	108.13	0.00	0.00	0.00	0.00	0.00	0.00	
8 Industrial Waste	0.00	0.00	0.00	0.00	0.00	0.00	3.51	2.46	1.17	0.00	0.00	0.00	0.00	0.00	0.00	
9 Yard Trash - IN	223.20	210.04	149.84	#####	0.00	0.00	0.00	0.00	0.00	0.00	0.00	0.00	2.76	2.65	2.67	
10 Sewage Sludge	0.00	0.00	0.00	0.00	17.22	21.30	0.00	0.00	0.00	0.00	0.00	0.00	0.00	0.00	0.00	
11 Industrial Sludge	0.00	0.00	0.00	0.00	0.00	0.00	0.00	0.00	0.00	0.00	0.00	0.00	0.00	0.00	0.00	
12 Water/Air Treatment Sludges	0.00	0.00	0.00	0.00	0.00	0.00	0.00	0.00	0.00	0.00	0.00	0.00	0.00	0.00	0.00	
13 Waste Tires - IN	50.74	47.49	79.41	#####	0.00	0.00	0.00	0.00	0.00	0.00	0.00	0.00	2.68	3.72	2.67	
13 Waste Tires - Tires Chipped	0.00	0.00	228.66		0.00	0.00	0.00	0.00	0.00	0.00	0.00	0.00	0.00	0.00	0.00	
Total Tonnage Weighted IN	438.29	486.67	697.43		5,937.50	7,152.42	7,141.74	27,584.31	27,452.81	27,031.88	0.00	0.00	0.00	5,522.46	5,307.41	5,332.18
LESS: Yard Trash Stored	(223.20)	(210.04)	(149.84)		0.00	0.00	0.00	0.00	0.00	0.00	0.00	0.00	0.00	0.00	0.00	
Yard Trash Mulched	0.00	0.00	0.00	@@	0.00	0.00	0.00	0.00	0.00	0.00	0.00	0.00	0.00	0.00	0.00	
Yard Trash Mulched & Landscaping	0.00	0.00	0.00	@@	0.00	0.00	0.00	0.00	0.00	0.00	0.00	0.00	0.00	0.00	0.00	
Yard Trash Mulched & to WTE	0.00	0.00	0.00		0.00	0.00	0.00	0.00	0.00	0.00	0.00	0.00	0.00	0.00	0.00	
Waste Tires Stored/Removed	(50.74)	(47.49)	(308.07)		0.00	0.00	0.00	0.00	0.00	0.00	0.00	0.00	0.00	0.00	0.00	
Waste Tires Moved to WTE	0.00	0.00	0.00		0.00	0.00	0.00	0.00	0.00	0.00	0.00	0.00	0.00	0.00	0.00	
Tons Moved to WTE	0.00	0.00	0.00		0.00	0.00	0.00	0.00	0.00	0.00	0.00	0.00	0.00	0.00	0.00	
Total Tonnage Landfilled	164.35	229.14	239.52		5,937.50	7,152.42	7,141.74				0.00	0.00	0.00			
Total Tonnage Processed by WTE								27,584.31	27,452.81	27,031.88						
Total Tonnage Received @ Transfer Station														5,522.46	5,307.41	5,332.18
ASH CELL **					5,920.28	7,131.12	7,141.74									
SOLID WASTE CELL					17.22	21.30	0.00									

@@ = Yard Waste is Mulched and Provided to the residents Free of Charge as "Landscaping Mulch."
 ** = Ash Residue is the only Material Disposed of in the Ash Landfill.

PASCO COUNTY UTILITIES - SOLID WASTE
TONNAGE SUMMARY - 2010 FY
Quarter Ending December 31, 2009

MATERIAL	West Pasco Class III Tonnage				West Pasco Class I Tonnage			WTE Tonnage			East Pasco Class I Tonnage			EPTS Tonnage		
	OCTOBER	NOVEMBER	DECEMBER		OCTOBER	NOVEMBER	DECEMBER	OCTOBER	NOVEMBER	DECEMBER	OCTOBER	NOVEMBER	DECEMBER	OCTOBER	NOVEMBER	DECEMBER
1 Household Waste	0.00	0.00	0.00		0.00	0.00	0.00	24,672.34	18,637.67	26,897.76	0.00	0.00	0.00	5,158.92	6,163.84	6,135.30
2 Commercial Waste	0.00	0.00	0.00		0.00	0.00	0.00	1,817.46	1,670.07	1,938.44	0.00	0.00	0.00	0.00	0.00	0.00
3 Ash Residue **	0.00	0.00	0.00		4,986.25	5,685.49	8,889.75	0.00	0.00	0.00	0.00	0.00	0.00	0.00	0.00	0.00
4 Incinerator By-Pass Waste	0.00	0.00	0.00		0.00	0.00	0.00	0.00	0.00	0.00	0.00	0.00	0.00	0.00	0.00	0.00
5 Construction & Demolition Debris	202.31	154.06	160.23	516.60	0.00	0.00	0.00	357.23	274.13	389.05	0.00	0.00	0.00	105.39	125.95	125.34
6 Treated Biomedical Waste	0.00	0.00	0.00	0.00	0.00	0.00	0.00	0.00	0.00	0.00	0.00	0.00	0.00	0.00	0.00	0.00
7 Agricultural Waste	0.00	0.00	0.00	0.00	0.00	0.00	0.00	108.01	82.88	117.63	0.00	0.00	0.00	0.00	0.00	0.00
8 Industrial Waste	0.00	0.00	0.00	0.00	0.00	0.00	0.00	46.39	55.84	63.63	0.00	0.00	0.00	0.00	0.00	0.00
9 Yard Trash - IN	184.09	134.63	105.61	424.33	0.00	0.00	0.00	0.00	0.00	0.00	0.00	0.00	0.00	2.63	3.15	3.13
10 Sewage Sludge	0.00	0.00	0.00	0.00	33.48	230.69	1,147.67	0.00	0.00	0.00	0.00	0.00	0.00	0.00	0.00	0.00
11 Industrial Sludge	0.00	0.00	0.00	0.00	0.00	0.00	0.00	0.00	0.00	0.00	0.00	0.00	0.00	0.00	0.00	0.00
12 Water/Air Treatment Sludges	0.00	0.00	0.00	0.00	0.00	0.00	0.00	0.00	0.00	0.00	0.00	0.00	0.00	0.00	0.00	0.00
13 Waste Tires - IN	49.24	55.92	55.53	160.69	0.00	0.00	0.00	0.00	0.00	0.00	0.00	0.00	0.00	2.56	4.41	3.13
13 Waste Tires - Tires Chipped	0.00	0.00	228.66		0.00	0.00	0.00	0.00	0.00	0.00	0.00	0.00	0.00	0.00	0.00	0.00
Total Tonnage Weighted IN	435.64	344.61	550.03		5,019.73	5,916.18	10,037.42	27,001.42	20,720.60	29,406.50	0.00	0.00	0.00	5,269.50	6,297.34	6,266.90
LESS: Yard Trash Stored	(184.09)	(134.63)	(105.61)		0.00	0.00	0.00	0.00	0.00	0.00	0.00	0.00	0.00	0.00	0.00	0.00
Yard Trash Mulched	0.00	0.00	0.00	@@	0.00	0.00	0.00	0.00	0.00	0.00	0.00	0.00	0.00	0.00	0.00	0.00
Yard Trash Mulched & Landscaping	0.00	0.00	0.00	@@	0.00	0.00	0.00	0.00	0.00	0.00	0.00	0.00	0.00	0.00	0.00	0.00
Yard Trash Mulched & to WTE	0.00	0.00	0.00		0.00	0.00	0.00	0.00	0.00	0.00	0.00	0.00	0.00	0.00	0.00	0.00
Waste Tires Stored/Removed	(49.24)	(55.92)	(284.19)		0.00	0.00	0.00	0.00	0.00	0.00	0.00	0.00	0.00	0.00	0.00	0.00
Waste Tires Moved to WTE	0.00	0.00	0.00		0.00	0.00	0.00	0.00	0.00	0.00	0.00	0.00	0.00	0.00	0.00	0.00
Tons Moved to WTE	0.00	0.00	0.00		0.00	0.00	0.00	0.00	0.00	0.00	0.00	0.00	0.00	0.00	0.00	0.00
Total Tonnage Landfilled	202.31	154.06	160.23		5,019.73	5,916.18	10,037.42				0.00	0.00	0.00			
Total Tonnage Processed by WTE								27,001.42	20,720.60	29,406.50						
Total Tonnage Received @ Transfer Station														5,269.50	6,297.34	6,266.90
ASH CELL **					4,986.25	5,685.49	8,889.75									
SOLID WASTE CELL					33.48	230.69	1,147.67									

@@ = Yard Waste is Mulched and Provided to the residents Free of Charge as "Landscaping Mulch."
 ** = Ash Residue is the only Material Disposed of in the Ash Landfill.

PASCO COUNTY UTILITIES - SOLID WASTE
TONNAGE SUMMARY - 2010 FY
 Quarter Ending March 31, 2010

MATERIAL	West Pasco Class III Tonnage			West Pasco Class I Tonnage			WTE Tonnage			East Pasco Class I Tonnage			EPTS Tonnage			
	JANUARY	FEBRUARY	MARCH	JANUARY	FEBRUARY	MARCH	JANUARY	FEBRUARY	MARCH	JANUARY	FEBRUARY	MARCH	JANUARY	FEBRUARY	MARCH	
1 Household Waste	0.00	0.00	0.00	0.00	0.00	0.00	22,747.57	22,244.81	27,655.96	0.00	0.00	0.00	5,919.40	5,491.81	7,184.58	
2 Commercial Waste	0.00	0.00	0.00	0.00	0.00	0.00	1,671.73	1,712.67	1,785.05	0.00	0.00	0.00	0.00	0.00	0.00	
3 Ash Residue **	0.00	0.00	0.00	6,716.77	6,700.33	7,149.46	0.00	0.00	0.00	0.00	0.00	0.00	0.00	0.00	0.00	
4 Incinerator By-Pass Waste	0.00	0.00	0.00	0.00	0.00	0.00	0.00	0.00	0.00	0.00	0.00	0.00	0.00	0.00	0.00	
5 Construction & Demolition Debris	150.37	330.30	364.71	845.38	0.00	0.00	329.54	323.53	397.75	0.00	0.00	0.00	120.93	112.22	146.77	
6 Treated Biomedical Waste	0.00	0.00	0.00	0.00	0.00	0.00	0.00	0.00	0.00	0.00	0.00	0.00	0.00	0.00	0.00	
7 Agricultural Waste	0.00	0.00	0.00	0.00	0.00	0.00	99.63	97.82	120.26	0.00	0.00	0.00	0.00	0.00	0.00	
8 Industrial Waste	0.00	0.00	0.00	0.00	0.00	0.00	60.13	75.44	83.89	0.00	0.00	0.00	0.00	0.00	0.00	
9 Yard Trash - IN	115.44	113.77	184.81	414.02	0.00	0.00	0.00	0.00	0.00	0.00	0.00	0.00	3.02	2.81	3.67	
10 Sewage Sludge	0.00	0.00	0.00	0.00	2.91	0.00	0.00	0.00	0.00	0.00	0.00	0.00	0.00	0.00	0.00	
11 Industrial Sludge	0.00	0.00	0.00	0.00	0.00	0.00	0.00	0.00	0.00	0.00	0.00	0.00	0.00	0.00	0.00	
12 Water/Air Treatment Sludges	0.00	0.00	0.00	0.00	0.00	0.00	0.00	0.00	0.00	0.00	0.00	0.00	0.00	0.00	0.00	
13 Waste Tires - IN	38.49	85.40	66.31	190.20	0.00	0.00	0.00	0.00	21.02	0.00	0.00	0.00	2.93	3.93	3.67	
13 Waste Tires - Tires Chipped	0.00	192.09	80.79	0.00	0.00	0.00	0.00	0.00	0.00	0.00	0.00	0.00	0.00	0.00	0.00	
Total Tonnage Weighted IN	304.30	721.56	696.62		6,719.68	6,700.33	7,150.73	24,908.61	24,454.27	30,063.92	0.00	0.00	0.00	6,046.28	5,610.76	7,338.69
LESS: Yard Trash Stored	(115.44)	(113.77)	(184.81)		0.00	0.00	0.00	0.00	0.00	0.00	0.00	0.00	0.00	0.00	0.00	
Yard Trash Mulched	0.00	0.00	0.00	@@	0.00	0.00	0.00	0.00	0.00	0.00	0.00	0.00	0.00	0.00	0.00	
Yard Trash Mulched & Landscaping	0.00	0.00	0.00	@@	0.00	0.00	0.00	0.00	0.00	0.00	0.00	0.00	0.00	0.00	0.00	
Yard Trash Mulched & to WTE	0.00	0.00	0.00		0.00	0.00	0.00	0.00	0.00	0.00	0.00	0.00	0.00	0.00	0.00	
Waste Tires Stored/Removed	(38.49)	(277.49)	(126.08)		0.00	0.00	0.00	0.00	0.00	0.00	0.00	0.00	0.00	0.00	0.00	
Waste Tires Moved to WTE	0.00	0.00	(21.02)		0.00	0.00	0.00	0.00	0.00	0.00	0.00	0.00	0.00	0.00	0.00	
Tons Moved to WTE	0.00	0.00	0.00		0.00	0.00	0.00	0.00	0.00	0.00	0.00	0.00	0.00	0.00	0.00	
Total Tonnage Landfilled	150.37	330.30	364.71		6,719.68	6,700.33	7,150.73				0.00	0.00	0.00			
Total Tonnage Processed by WTE								24,908.61	24,454.27	30,063.92						
Total Tonnage Received @ Transfer Station														6,046.28	5,610.76	7,338.69
ASH CELL **					6,716.77	6,700.33	7,149.46									
SOLID WASTE CELL					2.91	0.00	1.27									

@@ = Yard Waste is Mulched and Provided to the residents Free of Charge as "Landscaping Mulch."
 ** = Ash Residue is the only Material Disposed of in the Ash Landfill.

PASCO COUNTY UTILITIES - SOLID WASTE
TONNAGE SUMMARY - 2010 FY
Quarter Ending June 30, 2010

MATERIAL	West Pasco Class III Tonnage			West Pasco Class I Tonnage			WTE Tonnage			East Pasco Class I Tonnage			EPTS Tonnage			
	APRIL	MAY	JUNE	APRIL	MAY	JUNE	APRIL	MAY	JUNE	APRIL	MAY	JUNE	APRIL	MAY	JUNE	
1 Household Waste	0.00	0.00	0.00	0.00	0.00	0.00	21,281.23	27,524.12	26,927.63	0.00	0.00	0.00	8,014.39	5,632.61	5,251.88	
2 Commercial Waste	0.00	0.00	0.00	0.00	0.00	0.00	1,693.46	1,686.55	1,724.65	0.00	0.00	0.00	0.00	0.00	0.00	
3 Ash Residue **	0.00	0.00	0.00	4,223.04	9,038.49	7,315.29	0.00	0.00	0.00	0.00	0.00	0.00	0.00	0.00	0.00	
4 Incinerator By-Pass Waste	0.00	0.00	0.00	0.00	0.00	0.00	0.00	0.00	0.00	0.00	0.00	0.00	0.00	0.00	0.00	
5 Construction & Demolition Debris	253.10	223.54	194.15	670.79	0.00	0.00	310.64	393.81	386.19	0.00	0.00	0.00	163.72	115.09	107.29	
6 Treated Biomedical Waste	0.00	0.00	0.00	0.00	0.00	0.00	0.00	0.00	0.00	0.00	0.00	0.00	0.00	0.00	0.00	
7 Agricultural Waste	0.00	0.00	0.00	0.00	0.00	0.00	93.92	119.07	116.76	0.00	0.00	0.00	0.00	0.00	0.00	
8 Industrial Waste	0.00	0.00	0.00	0.00	0.00	0.00	100.46	43.05	35.11	0.00	0.00	0.00	0.00	0.00	0.00	
9 Yard Trash - IN	274.98	192.28	147.94	615.20	0.00	0.00	0.00	0.00	0.00	0.00	0.00	0.00	4.09	2.88	2.68	
10 Sewage Sludge	0.00	0.00	0.00	0.00	62.51	54.35	93.44	0.00	0.00	0.00	0.00	0.00	0.00	0.00	0.00	
11 Industrial Sludge	0.00	0.00	0.00	0.00	0.00	0.00	0.00	0.00	0.00	0.00	0.00	0.00	0.00	0.00	0.00	
12 Water/Air Treatment Sludges	0.00	0.00	0.00	0.00	0.00	0.00	0.00	0.00	0.00	0.00	0.00	0.00	0.00	0.00	0.00	
13 Waste Tires - IN	54.60	43.47	59.39	157.46	0.00	0.00	0.00	0.00	0.00	0.00	0.00	0.00	3.97	4.03	2.68	
13 Waste Tires - Tires Chipped	0.00	0.00	0.00	0.00	0.00	0.00	0.00	0.00	0.00	0.00	0.00	0.00	0.00	0.00	0.00	
Total Tonnage Weighted IN	582.68	459.29	401.48		4,285.55	9,092.84	7,408.73	23,479.71	29,766.60	29,190.34	0.00	0.00	0.00	8,186.18	5,754.61	5,364.54
LESS: Yard Trash Stored/to WTE	(274.98)	(192.28)	(147.94)		0.00	0.00	0.00	0.00	0.00	0.00	0.00	0.00	0.00	0.00	0.00	
Yard Trash Mulched	0.00	0.00	0.00	@@	0.00	0.00	0.00	0.00	0.00	0.00	0.00	0.00	0.00	0.00	0.00	
Yard Trash Mulched & Landscaping	0.00	0.00	0.00	@@	0.00	0.00	0.00	0.00	0.00	0.00	0.00	0.00	0.00	0.00	0.00	
Yard Trash Mulched & to WTE	0.00	0.00	0.00		0.00	0.00	0.00	0.00	0.00	0.00	0.00	0.00	0.00	0.00	0.00	
Waste Tires Stored/Removed	(54.60)	(43.47)	(59.39)		0.00	0.00	0.00	0.00	0.00	0.00	0.00	0.00	0.00	0.00	0.00	
Waste Tires Moved to WTE	0.00	0.00	0.00		0.00	0.00	0.00	0.00	0.00	0.00	0.00	0.00	0.00	0.00	0.00	
Tons Moved to WTE	0.00	0.00	0.00		0.00	0.00	0.00	0.00	0.00	0.00	0.00	0.00	0.00	0.00	0.00	
Total Tonnage Landfilled	253.10	223.54	194.15		4,285.55	9,092.84	7,408.73				0.00	0.00	0.00			
Total Tonnage Processed by WTE								23,479.71	29,766.60	29,190.34						
Total Tonnage Received @ Transfer Station														8,186.18	5,754.61	5,364.54
ASH CELL **					4,223.04	9,038.49	7,315.29									
SOLID WASTE CELL					62.51	54.35	93.44									

@@ = Yard Waste is Mulched and Provided to the residents Free of Charge as "Landscaping Mulch."
 ** = Ash Residue is the only Material Disposed of in the Ash Landfill.

PASCO COUNTY UTILITIES - SOLID WASTE
 TONNAGE SUMMARY - 2010 FY
 Quarter Ending September 30, 2010

MATERIAL	West Pasco Class III Tonnage			West Pasco Class I Tonnage			WTE Tonnage			East Pasco Class I Tonnage			EPTS Tonnage		
	JULY	AUGUST	SEPTEMBER	JULY	AUGUST	SEPTEMBER	JULY	AUGUST	SEPTEMBER	JULY	AUGUST	SEPTEMBER	JULY	AUGUST	SEPTEMBER
1 Household Waste	0.00	0.00	0.00	0.00	0.00	0.00	26,755.56	27,444.75	23,185.60	0.00	0.00	0.00	4,871.01	4,973.16	4,708.79
2 Commercial Waste	0.00	0.00	0.00	0.00	0.00	0.00	1,775.42	1,974.36	1,766.51	0.00	0.00	0.00	0.00	0.00	0.00
3 Ash Residue **	0.00	0.00	0.00	7,407.31	7,295.74	7,326.15	0.00	0.00	0.00	0.00	0.00	0.00	0.00	0.00	0.00
4 Incinerator By-Pass Waste	0.00	0.00	0.00	0.00	0.00	0.00	0.00	0.00	0.00	0.00	0.00	0.00	0.00	0.00	0.00
5 Construction & Demolition Debris	248.09	220.64	198.40	667.13	0.00	0.00	384.08	396.04	336.05	0.00	0.00	0.00	99.51	101.62	96.20
6 Treated Biomedical Waste	0.00	0.00	0.00	0.00	0.00	0.00	0.00	0.00	0.00	0.00	0.00	0.00	0.00	0.00	0.00
7 Agricultural Waste	0.00	0.00	0.00	0.00	0.00	0.00	116.12	119.74	101.60	0.00	0.00	0.00	0.00	0.00	0.00
8 Industrial Waste	0.00	0.00	0.00	0.00	0.00	0.00	0.00	0.00	0.00	0.00	0.00	0.00	0.00	0.00	0.00
9 Yard Trash - IN	176.70	187.54	114.91	479.15	0.00	0.00	0.00	0.00	0.00	0.00	0.00	0.00	2.49	2.54	2.40
10 Sewage Sludge	0.00	0.00	0.00	0.00	41.56	134.02	0.00	0.00	0.00	0.00	0.00	0.00	0.00	0.00	0.00
11 Industrial Sludge	0.00	0.00	0.00	0.00	0.00	0.00	0.00	0.00	0.00	0.00	0.00	0.00	0.00	0.00	0.00
12 Water/Air Treatment Sludges	0.00	0.00	0.00	0.00	0.00	0.00	0.00	0.00	0.00	0.00	0.00	0.00	0.00	0.00	0.00
13 Waste Tires - IN	109.39	77.36	36.63	223.38	0.00	0.00	0.00	0.00	11.12	0.00	0.00	0.00	2.41	3.56	2.40
13 Waste Tires - Tires Chipped	0.00	321.83	97.19	419.02	0.00	0.00	0.00	0.00	0.00	0.00	0.00	0.00	0.00	0.00	0.00
Total Tonnage Weighted IN	534.18	807.37	447.13		7,448.87	7,429.76	29,031.19	29,934.89	25,400.89	0.00	0.00	0.00	4,975.42	5,080.87	4,809.80
LESS: Yard Trash Stored/to WTE	(176.70)	(187.54)	(114.91)		0.00	0.00	0.00	0.00	0.00	0.00	0.00	0.00	0.00	0.00	0.00
Yard Trash Mulched	498.18	0.00	0.00	@@	0.00	0.00	0.00	0.00	0.00	0.00	0.00	0.00	0.00	0.00	0.00
Yard Trash Mulched & Landscape/Cover	(498.18)	0.00	0.00	@@	0.00	0.00	0.00	0.00	0.00	0.00	0.00	0.00	0.00	0.00	0.00
Yard Trash Mulched & to WTE	0.00	0.00	0.00		0.00	0.00	0.00	0.00	0.00	0.00	0.00	0.00	0.00	0.00	0.00
Waste Tires Stored/Removed	(109.39)	(399.19)	(122.70)		0.00	0.00	0.00	0.00	0.00	0.00	0.00	0.00	0.00	0.00	0.00
Waste Tires Moved to WTE	0.00	0.00	(11.12)		0.00	0.00	0.00	0.00	0.00	0.00	0.00	0.00	0.00	0.00	0.00
Tons Moved to WTE	0.00	0.00	0.00		0.00	0.00	0.00	0.00	0.00	0.00	0.00	0.00	0.00	0.00	0.00
Total Tonnage Landfilled	248.09	220.64	198.40		7,448.87	7,429.76	29,031.19	29,934.89	25,400.89	0.00	0.00	0.00			
Total Tonnage Processed by WTE							29,031.19	29,934.89	25,400.89						
Total Tonnage Received @ Transfer Station													4,975.42	5,080.87	4,809.80
ASH CELL **					7,407.31	7,295.74	7,326.15								
SOLID WASTE CELL					41.56	134.02	137.44								

@@ = Yard Waste is Mulched and Provided to the residents Free of Charge as "Landscaping Mulch."
 ** = Ash Residue is the only Material Disposed of in the Ash Landfill.

FLORIDA DEPARTMENT OF
 ENVIRONMENTAL PROTECTION
 NOV 04 2010
 SOUTHWEST DISTRICT
 TAMPA

PASCO COUNTY UTILITIES - SOLID WASTE
TONNAGE SUMMARY - FY 2011
 Quarter Ending December 31, 2010

MATERIAL	West Pasco Class III Tonnage				West Pasco Class I Tonnage			WTE Tonnage			East Pasco Class I Tonnage			EPTS Tonnage		
	OCTOBER	NOVEMBER	DECEMBER		OCTOBER	NOVEMBER	DECEMBER	OCTOBER	NOVEMBER	DECEMBER	OCTOBER	NOVEMBER	DECEMBER	OCTOBER	NOVEMBER	DECEMBER
1 Household Waste	0.00	0.00	0.00		0.00	0.00	0.00	16,294.28	24,861.26	26,632.08	0.00	0.00	0.00	4,514.59	2,845.03	5,135.27
2 Commercial Waste	0.00	0.00	0.00		0.00	0.00	0.00	1,567.83	1,747.18	1,766.16	0.00	0.00	0.00	0.00	0.00	0.00
3 Ash Residue **	0.00	0.00	0.00		4,160.13	7,310.48	8,022.12	0.00	0.00	0.00	0.00	0.00	0.00	0.00	0.00	0.00
4 Incinerator By-Pass Waste	0.00	0.00	0.00		0.00	0.00	0.00	0.00	0.00	0.00	0.00	0.00	0.00	0.00	0.00	0.00
5 Construction & Demolition Debris	210.05	189.73	132.32	532.10	0.00	0.00	0.00	240.46	358.23	382.30	0.00	0.00	0.00	92.23	58.13	104.91
6 Treated Biomedical Waste	0.00	0.00	0.00		0.00	0.00	0.00	0.00	0.00	0.00	0.00	0.00	0.00	0.00	0.00	0.00
7 Agricultural Waste	0.00	0.00	0.00		0.00	0.00	0.00	72.70	108.31	115.58	0.00	0.00	0.00	0.00	0.00	0.00
8 Industrial Waste	0.00	0.00	0.00		0.00	0.00	0.00	0.00	2.28	0.00	0.00	0.00	0.00	0.00	0.00	0.00
9 Yard Trash - IN	179.27	137.90	77.24	394.41	0.00	0.00	0.00	0.00	0.00	0.00	0.00	0.00	0.00	2.31	1.45	2.62
10 Sewage Sludge	0.00	0.00	0.00		47.54	87.91	41.53	0.00	0.00	0.00	0.00	0.00	0.00	0.00	0.00	0.00
11 Industrial Sludge	0.00	0.00	0.00		0.00	0.00	0.00	0.00	0.00	0.00	0.00	0.00	0.00	0.00	0.00	0.00
12 Water/Air Treatment Sludges	0.00	0.00	0.00		0.00	0.00	0.00	0.00	0.00	0.00	0.00	0.00	0.00	0.00	0.00	0.00
13 Waste Tires - IN	51.77	66.50	48.72	166.99	0.00	0.00	0.00	0.00	0.00	0.00	0.00	0.00	0.00	2.24	2.03	2.62
13 Waste Tires - Tires Chipped	0.00	0.00	0.00	0.00	0.00	0.00	0.00	0.00	0.00	0.00	0.00	0.00	0.00	0.00	0.00	0.00
Total Tonnage Weighted IN	441.09	394.13	258.28		4,207.67	7,398.39	8,063.65	18,175.27	27,077.26	28,896.12	0.00	0.00	0.00	4,611.36	2,906.65	5,245.42
LESS: Yard Trash Stored/to WTE	(179.27)	(137.90)	(77.24)		0.00	0.00	0.00	0.00	0.00	0.00	0.00	0.00	0.00	0.00	0.00	0.00
Yard Trash Mulched	0.00	0.00	0.00	@@	0.00	0.00	0.00	0.00	0.00	0.00	0.00	0.00	0.00	0.00	0.00	0.00
Yard Trash Mulched & Landscape/Cover	0.00	0.00	0.00	@@	0.00	0.00	0.00	0.00	0.00	0.00	0.00	0.00	0.00	0.00	0.00	0.00
Yard Trash Mulched & to WTE	0.00	0.00	0.00		0.00	0.00	0.00	0.00	0.00	0.00	0.00	0.00	0.00	0.00	0.00	0.00
Waste Tires Stored/Removed	(51.77)	(66.50)	(48.72)		0.00	0.00	0.00	0.00	0.00	0.00	0.00	0.00	0.00	0.00	0.00	0.00
Waste Tires Moved to WTE	0.00	0.00	0.00		0.00	0.00	0.00	0.00	0.00	0.00	0.00	0.00	0.00	0.00	0.00	0.00
Tons Moved to WTE	0.00	0.00	0.00		0.00	0.00	0.00	0.00	0.00	0.00	0.00	0.00	0.00	0.00	0.00	0.00
Total Tonnage Landfilled	210.05	189.73	132.32		4,207.67	7,398.39	8,063.65				0.00	0.00	0.00			
Total Tonnage Processed by WTE								18,175.27	27,077.26	28,896.12						
Total Tonnage Received @ Transfer Station														4,611.36	2,906.65	5,245.42
ASH CELL **					4,160.13	7,310.48	8,022.12									
SOLID WASTE CELL					47.54	87.91	41.53									

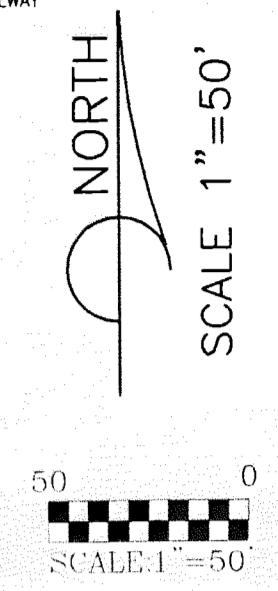
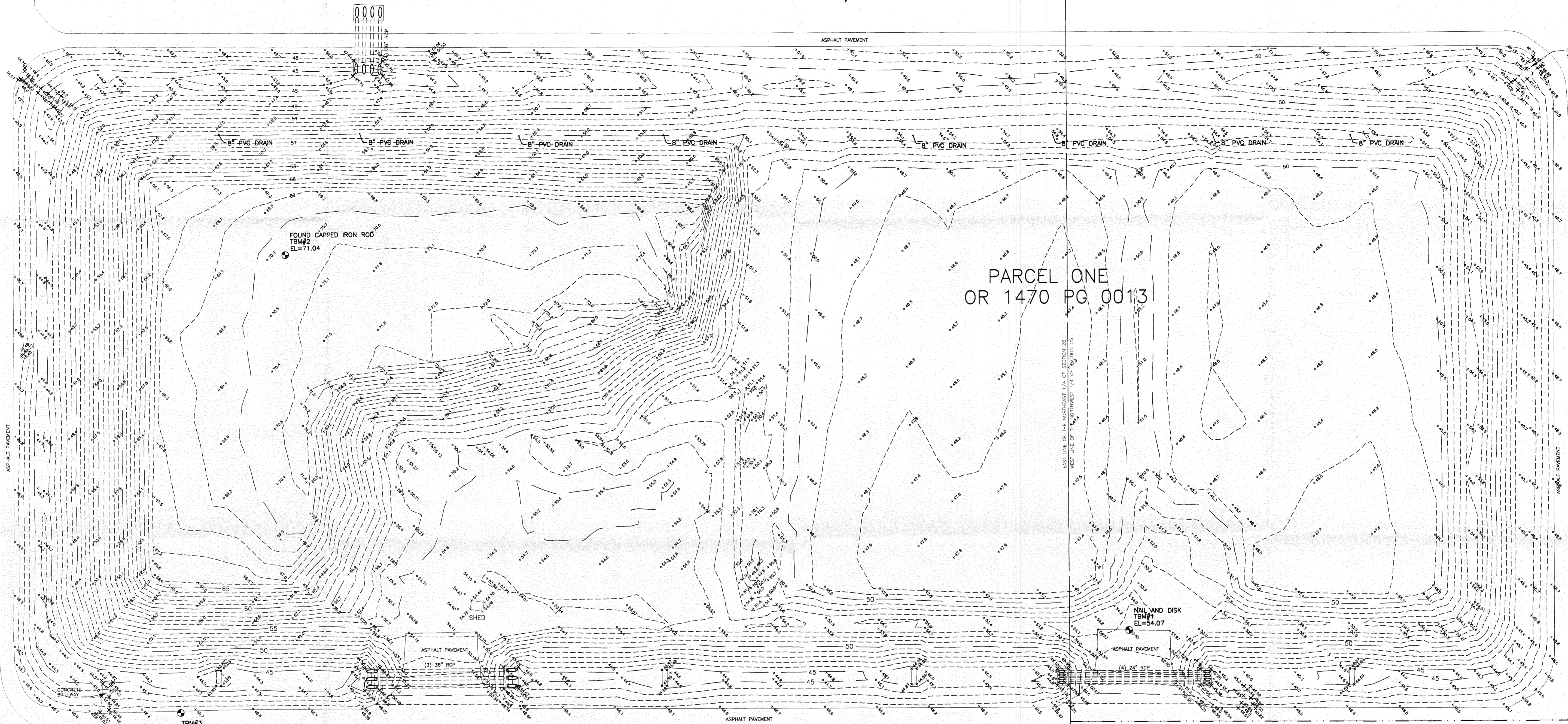
@@ = Yard Waste is Mulched and Provided to the residents Free of Charge as "Landscaping Mulch."
 ** = Ash Residue is the only Material Disposed of in the Ash Landfill.

Attachment-2 Topographic Survey for West

Pasco County Class III Landfill

(March 2011)

SECTIONS 25 & 26, TOWNSHIP 24 SOUTH, RANGE 17 EAST PASCO COUNTY, FLORIDA



LEGEND

- SEC SECTION
- TWP TOWNSHIP
- RNG RANGE
- COR CORNER
- NTS NOT TO SCALE
- FCM FOUND CONCRETE MONUMENT
- FIR FOUND IRON ROD
- PCED PASCO COUNTY ENGINEERING DEPARTMENT
- (M) MEASURED
- (C) CALCULATED
- (D) DEED
- ⊗ X-CUT IN TOP OF TELEPHONE CAN
- MH MANHOLE
- SET 1/2" IRON ROD PASCO COUNTY
- LB LICENSED BUSINESS
- TBM TEMPORARY BENCHMARK
- EL ELEVATION
- ⊙ MONITOR WELLS
- BENCHMARK
- RCP REINFORCED CONCRETE PIPE
- OR OFFICIAL RECORDS BOOK

NOTES

- 1) THIS SURVEY WAS PREPARED WITHOUT THE BENEFIT OF A TITLE SEARCH AND MAY BE SUBJECT TO EASEMENTS, RIGHTS-OF-WAY, RESTRICTIONS, AND OTHER MATTERS OF RECORD.
- 2) UNDERGROUND INSTALLATIONS OR IMPROVEMENTS, INCLUDING BUILDING FOUNDATIONS HAVE NOT BEEN LOCATED, EXCEPT AS SHOWN HEREON.
- 3) THE PROPERTY SHOWN HEREON IS SUBJECT TO THE RULES, REGULATIONS, ORDINANCES AND/OR JURISDICTIONS OF LOCAL, STATE AND/OR FEDERAL AGENCIES; THE REQUIREMENTS OF SAID RULES, REGULATIONS, ORDINANCES AND/OR JURISDICTIONS ARE NOT SHOWN HEREON, UNLESS OTHERWISE STATED.
- 4) ELEVATIONS BASED ON NAVD 1988
- 5) TEMPORARY BENCHMARKS AS SHOWN HEREON

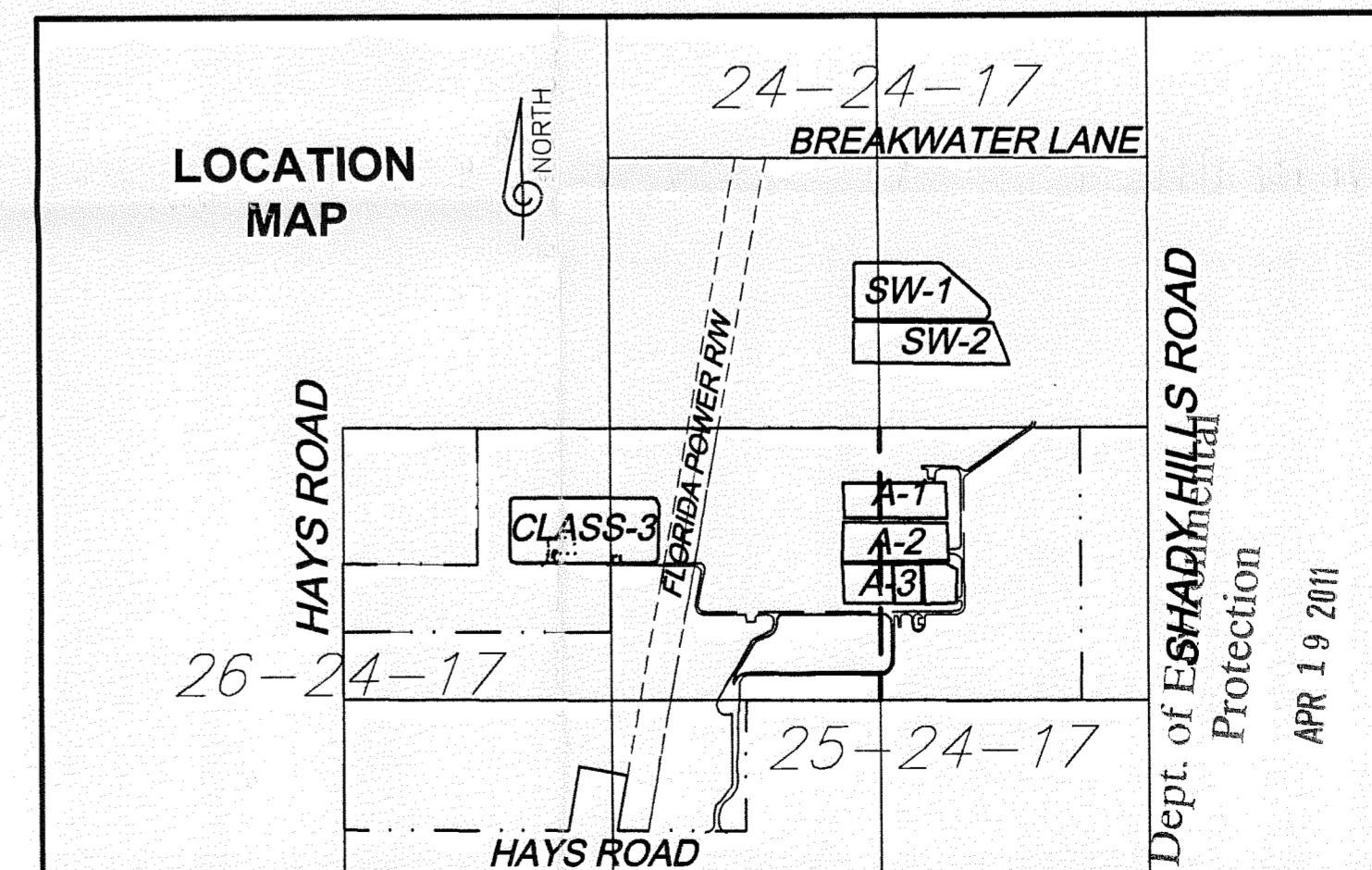
Elevations based on North American Vertical Datum 1988 as referenced to U.S.C.G.S. (United States Coastal & Geodetic Survey) Stations; Stanley (1937) a 2nd Order Station set in a 12"x12" Concrete monument Elevation 95.868 feet and Richey (1934) a 2nd Order Station set in a 12"x12" Concrete monument Elevation 31.588 feet

Elevations were determined using N.G.S. (National Geodetic Survey) GEOID 03, by Static Observations on said Stations by Pasco County Survey.

Survey Certification:

I hereby certify that this survey meets the minimum technical standards for land surveying in the state of Florida as described in Chapter 5J-17 of the Florida administrative code.

Date of Survey: March 17, 2011
Type of Survey: Topographic Survey



REVISIONS					
DATE	BY	DESCRIPTION	DATE	BY	DESCRIPTION

HARDEEP SINGH, FLORIDA LICENSED SURVEYOR AND MAPPER NO. 4575
NOT VALID WITHOUT THE SIGNATURE AND THE ORIGINAL RAISED SEAL OF THIS FLORIDA LICENSED SURVEYOR AND MAPPER.

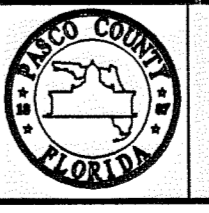
DRAWN BY
rfp
CHECKED BY
DJD

PASCO COUNTY ENGINEERING SERVICES
 7530 LITTLE ROAD
 NEW PORT RICHEY, FLORIDA 34654-5507

COORDINATE FILE
class3.ord
DRAWING FILE
CLASS3.DWG

FIELD BOOK, PAGE(S)
773 71-73
DATE
25 March 2011

SCALE
1" = 50'
PROJECT NUMBER
x-09699.00



WEST PASCO LANDFILL CLASS 3 TOPOGRAPHIC SURVEY

SHEET
01 OF 01
DRAWING NUMBER

FILE NO. SURVEY/CAD DATA UTILITIES/REGISTRATION/CLASS 3.DWG