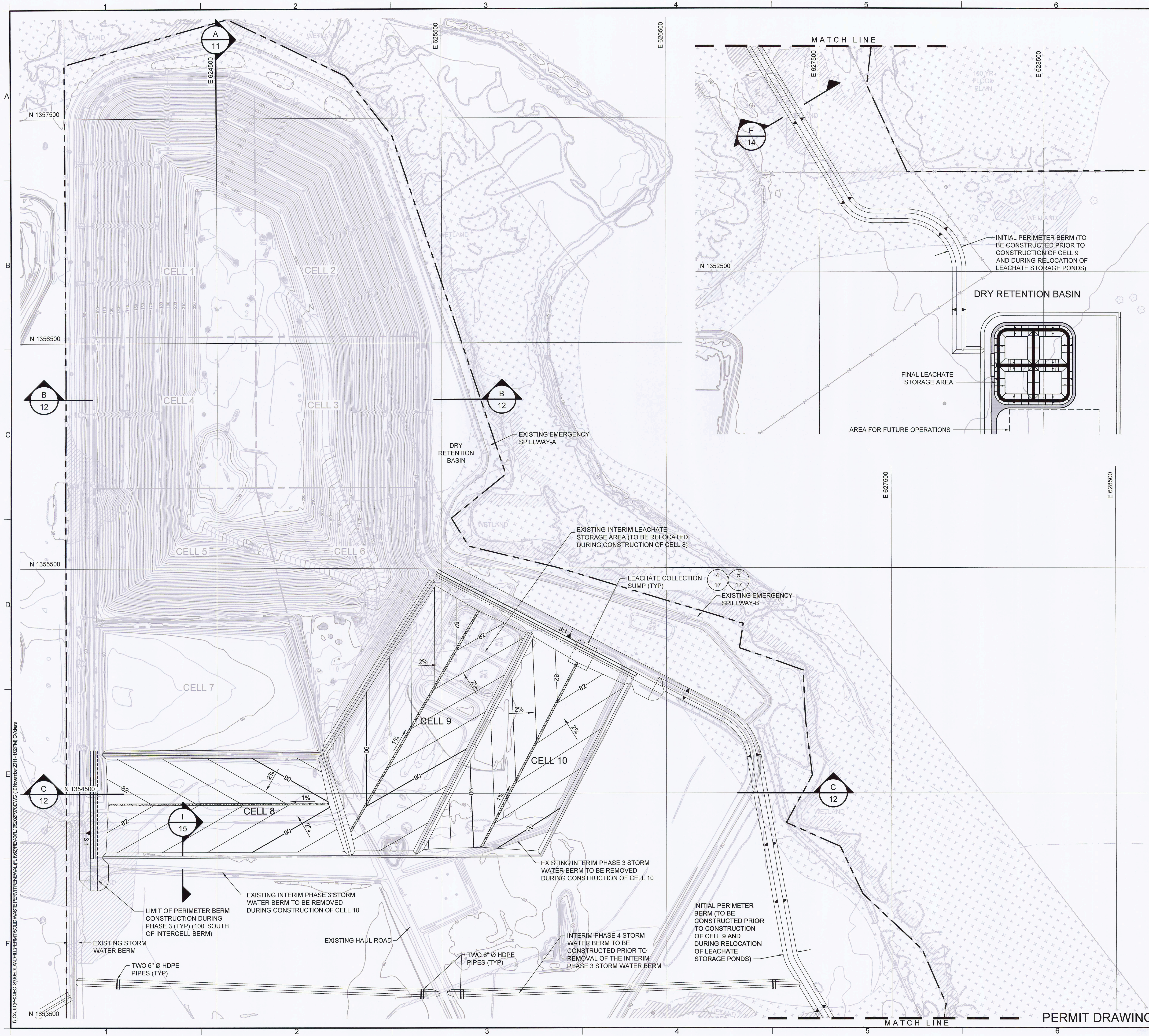


RECEIVED
NOV 14 2011
DEP Central Dist.

0	NOV 2011	ISSUED FOR FDEP APPROVAL	JWO	VMD
REV	DATE	DESCRIPTION	DRN	APP
Geosyntec consultants 13101 TELECOM DRIVE, SUITE 120 TEMPLE TERRACE, FLORIDA 33637 USA PH: 813.558.0990 - FX: 813.558.9726 AUTHORIZATION NUMBER: 4321				
WSI Waste Services, Inc. 1501 OMNI WAY ST. CLOUD, FLORIDA 34773 TEL: 407-891-3720 FAX: 407-891-3730				
TITLE: SITE DEVELOPMENT PLAN				
PROJECT: SOLID WASTE RENEWAL PERMIT				
SITE: SOLID WASTE MANAGEMENT FACILITY				
DESIGN BY: VMD/JDQ DATE: NOVEMBER 2011				
DRAWN BY: JWO/CMV PROJECT NO.: FL1962.02				
CHECKED BY: VMD FILE: FL1962.02P060				
REVIEWED BY: JDQ DRAWING NO.: 6 OF 45				
APPROVED BY: VMD				



0

200'

400'

SCALE IN FEET

LEGEND

PROPERTY BOUNDARY

EXISTING GROUND ELEVATION (FEET)
(SEE NOTE 3)

EXISTING FENCE

WETLAND BOUNDARY BY PHOTO INTERPRETATION BY
BRA (SEE NOTE 4)

WETLAND BOUNDARY BY FIELD SURVEY (SEE NOTE 4)

100-YEAR FLOODPLAIN (SEE NOTE 5)

PROPOSED SUBBASE ELEVATION (FEET)

LEAK DETECTION TRENCH

Q

20

RECEIVED

NOV 14 2011

DEP Central Dist.

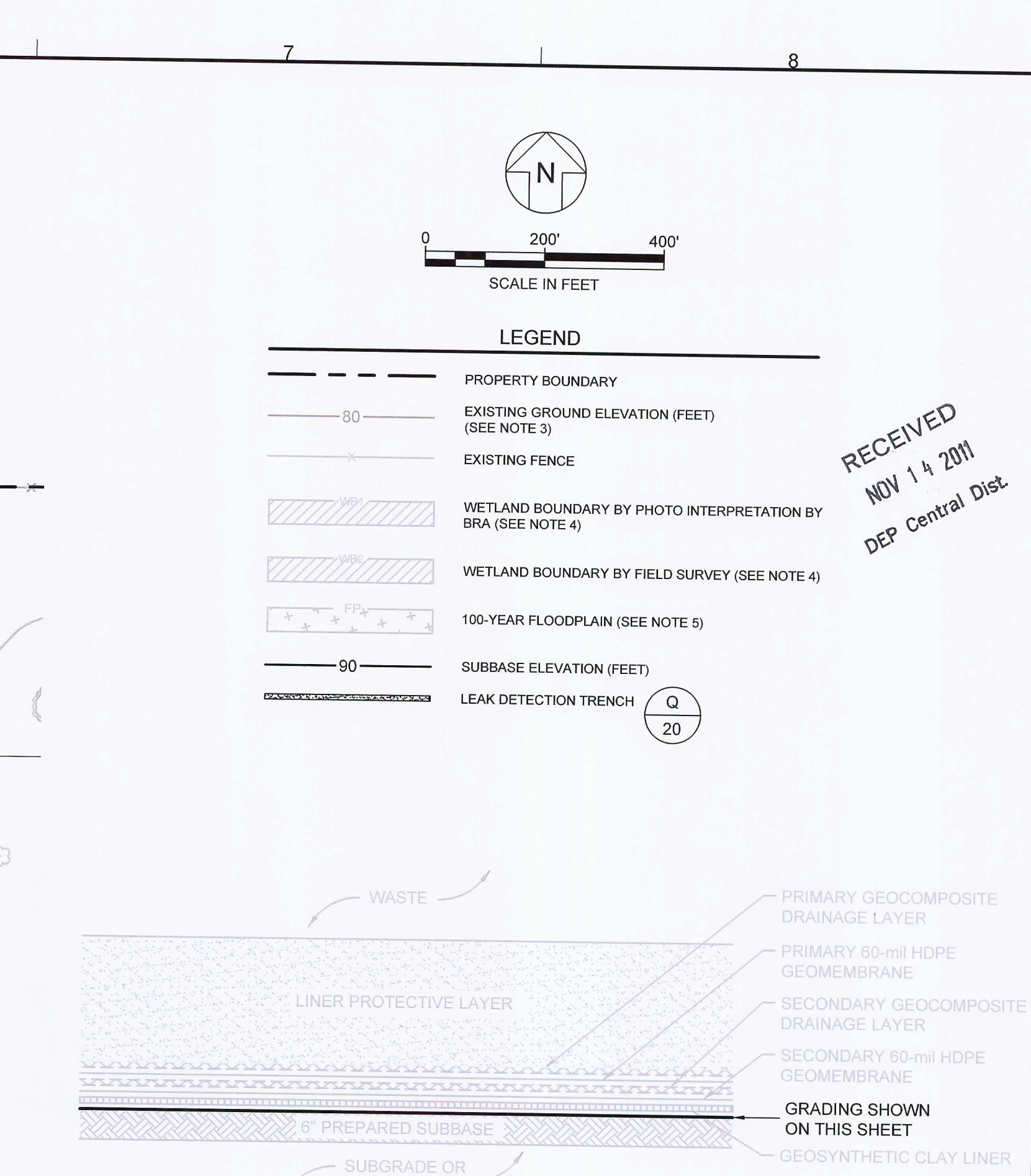
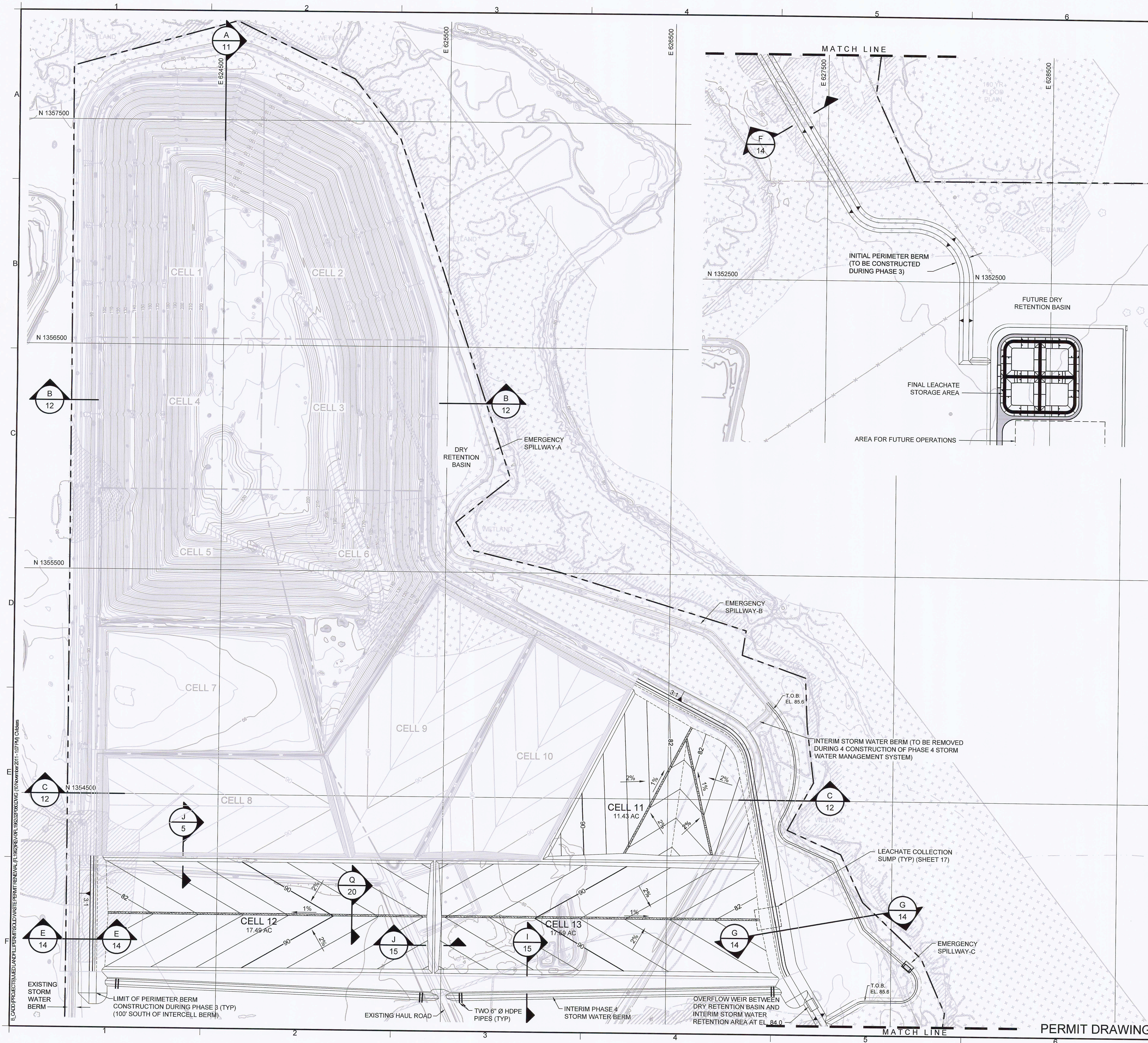
GRADING KEY MAP
SCALE: 1" = 2"
XREF: FL1962.02X2012

NOTES:

- NORTHING AND EASTING COORDINATES SHOWN REPRESENT FLORIDA STATE PLANE EAST ZONE NORTH AMERICAN DATUM OF 1983 (NAD83). THE ELEVATIONS SHOWN REPRESENT NATIONAL GEODETIC VERTICAL DATUM OF 1929 (NGVD29)(FEET).
- THE PROPERTY BOUNDARY IS BASED ON A COMPOSITE BOUNDARY SURVEY PROVIDED BY JOHNSTON SURVEYING INC., KISSIMMEE FLORIDA, DATED AUGUST 12, 1999.
- TOPOGRAPHIC INFORMATION SHOWN ON THIS DRAWING WAS PROVIDED BY BASE MAPPING CO. LTD BASED ON AN AERIAL PHOTOGRAPH TAKEN ON 18 MAY 2011.
- THE WETLAND BOUNDARY INFORMATION SHOWN IS BASED ON: A FIELD SURVEY DATED 15 MAY 2002 BY JOHNSTON SURVEYING INC. OF WETLANDS BOUNDARIES FLAGGED BY BIOLOGICAL RESEARCH ASSOCIATES, INC. (BRA), THE EXISTING JURISDICTIONAL WETLAND DETERMINATIONS, A PHOTO INTERPRETATION OF WETLAND BOUNDARIES BY BRA IN AREAS OUTSIDE THE LIMITS OF CONSTRUCTION, AND A FIELD SURVEY DATED 24 NOVEMBER 2010 BY PEAVEY & ASSOCIATES OF WETLAND BOUNDARIES FLAGGED BY ENTRIX, INC.
- THE 100-YEAR FLOODPLAIN BOUNDARY SHOWN WAS PROVIDED BY THE OSCEOLA COUNTY GIS DEPARTMENT ON JANUARY 9, 2002 AND RECONFIRMED WITH THE OSCEOLA COUNTY GIS DEPARTMENT ON 24 SEPTEMBER 2010.

0	NOV 2011	ISSUED FOR FDEP APPROVAL	JWO	VMD
REV	DATE	DESCRIPTION	DRN	APP
<div><div><div><div><div></div><div>Geosyntec</div><div>consultants</div></div><div>13101 TELECOM DRIVE, SUITE 120 TEMPLE TERRACE, FLORIDA 33637 USA PH: 813.558.0990 - FX: 813.558.9726 AUTHORIZATION NUMBER: 4321</div></div><div><div><div></div><div>WSI</div><div>Waste Services, Inc.</div></div><div>1501 OMNI WAY ST. CLOUD, FLORIDA 34773 TEL: 407-891-3720 FAX: 407-891-3730</div></div></div></div>			<div>RECEIVED</div> <div>NOV 14 2011</div> <div>DEP Central Dist.</div>	

TITLE: BASE GRADING PLAN - PHASE 3				
PROJECT: SOLID WASTE RENEWAL PERMIT				
SITE: E.D. SOLID WASTE MANAGEMENT FACILITY				
VICTOR M. DAMASCENO No 72968 STATE OF FLORIDA PROFESSIONAL ENGINEER VICTOR DAMASCENO - LICENSE NO. 72968			DESIGN BY: VMD/JDQ DATE: NOVEMBER 2011 DRAWN BY: JWO/CMV PROJECT NO.: FL1962.02 CHECKED BY: VMD FILE: FL1962.02P070 REVIEWED BY: JDQ DRAWING NO.: 7 OF 45 APPROVED BY: VMD	



- GRADING KEY MAP**
SCALE: 1" = 2"
XREF: FL1962.02X2012
- NOTES:**
- NORTHING AND EASTING COORDINATES SHOWN REPRESENT FLORIDA STATE PLANE EAST ZONE NORTH AMERICAN DATUM OF 1983 (NAD83); THE ELEVATIONS SHOWN REPRESENT NATIONAL GEODETIC VERTICAL DATUM OF 1929 (NGVD29)(FEET).
 - THE PROPERTY BOUNDARY IS BASED ON A COMPOSITE BOUNDARY SURVEY PROVIDED BY JOHNSTON SURVEYING INC., KISSIMEE FLORIDA, DATED AUGUST 12, 1999.
 - TOPOGRAPHIC INFORMATION SHOWN ON THIS DRAWING WAS PROVIDED BY BASE MAPPING CO. LTD. BASED ON AN AERIAL PHOTOGRAPH TAKEN ON 18 MAY 2011.
 - THE WETLAND BOUNDARY INFORMATION SHOWN IS BASED ON: A FIELD SURVEY DATED 15 MAY 2002 BY JOHNSTON SURVEYING INC. OF WETLANDS BOUNDARIES FLAGGED BY BIOLOGICAL RESEARCH ASSOCIATES, INC. (BRA), THE EXISTING JURISDICTIONAL WETLAND DETERMINATIONS; A PHOTO INTERPRETATION OF WETLAND BOUNDARIES BY BRA IN AREAS OUTSIDE THE LIMITS OF CONSTRUCTION, AND A FIELD SURVEY DATED 24 NOVEMBER 2010 BY PEAVEY & ASSOCIATES OF WETLAND BOUNDARIES FLAGGED BY ENTRIX, INC.
 - THE 100-YEAR FLOODPLAIN BOUNDARY SHOWN WAS PROVIDED BY THE OSCEOLA COUNTY GIS DEPARTMENT ON JANUARY 9, 2002 AND RECONFIRMED WITH THE OSCEOLA COUNTY GIS DEPARTMENT ON 24 SEPTEMBER 2010.

0	NOV 2011	ISSUED FOR FDEP APPROVAL	JVO	VMD
REV	DATE	DESCRIPTION	DRN	APP

Geosyntec
consultants
13101 TELECOM DRIVE, SUITE 120
TEMPLE TERRACE, FLORIDA 33637 USA
PH: 813.558.0990 - FX: 813.558.9726
AUTHORIZATION NUMBER: 4321

WSI
Waste Services, Inc.
1501 OMNI WAY
ST. CLOUD, FLORIDA 34773
TEL: 407-891-3720 FAX: 407-891-3730

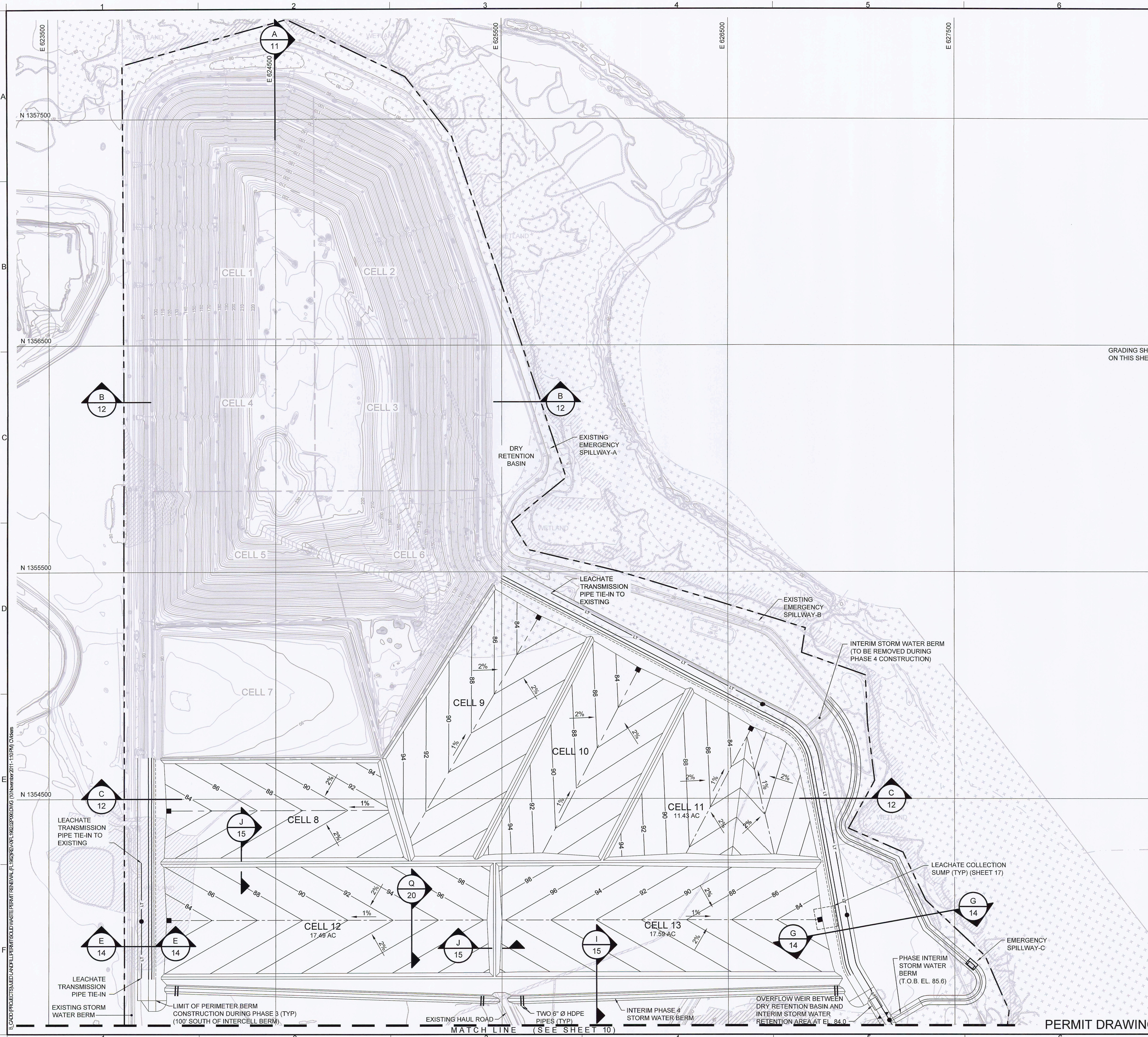
TITLE: **BASE GRADING PLAN - PHASE 4**

PROJECT: **SOLID WASTE RENEWAL PERMIT**

SITE: **E.D. SOLID WASTE MANAGEMENT FACILITY**

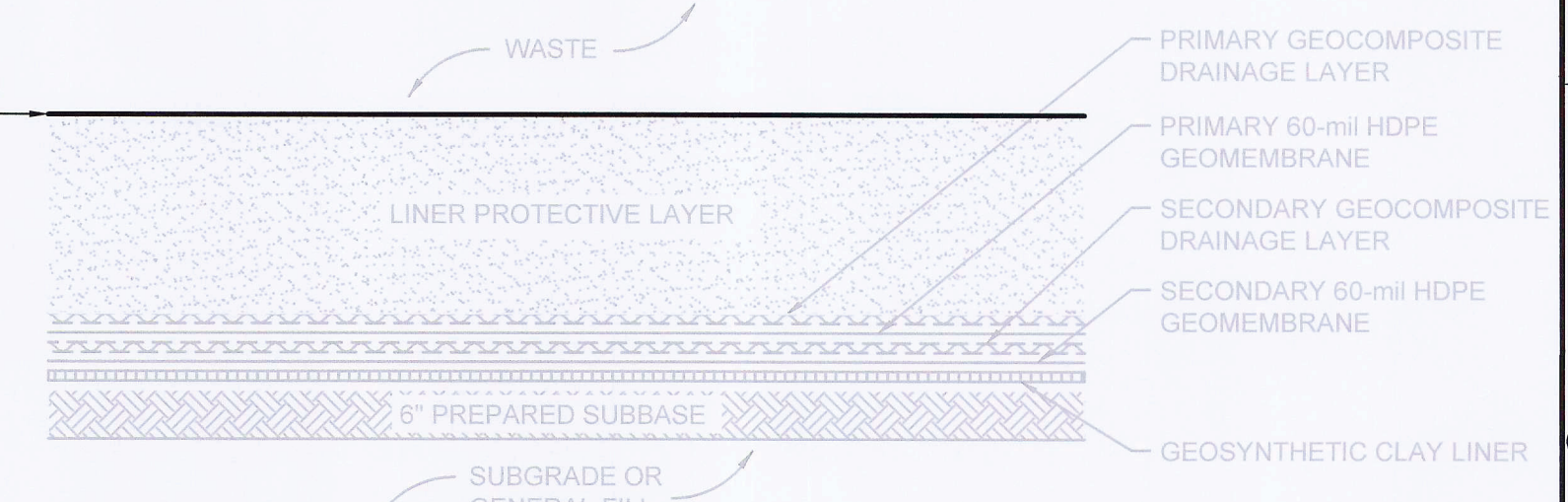
DESIGN BY: VMD/JDQ DATE: NOVEMBER 2011
DRAWN BY: JVO/CMV PROJECT NO.: FL1962.02
CHECKED BY: VMD FILE: FL1962.02P080
REVIEWED BY: JDQ DRAWING NO.:
APPROVED BY: VMD 8 OF 45

VICTOR DAMASCENO - LICENSE NO. 72966



LEGEND

- PROPERTY BOUNDARY
- EXISTING GROUND ELEVATION (FEET) (NOTE 3)
- EXISTING FENCE
- WETLAND BOUNDARY BY PHOTO INTERPRETATION BY BRA (NOTE 4)
- WETLAND BOUNDARY BY FIELD SURVEY (NOTE 4)
- 100-YEAR FLOODPLAIN (NOTE 5)
- STORM WATER MANAGEMENT BASIN
- TOP OF PROTECTIVE COVER LAYER ELEVATION (FEET)
- LEACHATE TRANSMISSION PIPE AND MANHOLE
- LEACHATE COLLECTION PIPE AND SUMP



- NOTES:
- NORTHING AND EASTING COORDINATES SHOWN REPRESENT FLORIDA STATE PLANE EAST ZONE NORTH AMERICAN DATUM OF 1983 (NAD83) THE ELEVATIONS SHOWN REPRESENT NATIONAL GEODETIC VERTICAL DATUM OF 1929 (NGVD29)(FEET).
 - THE PROPERTY BOUNDARY IS BASED ON A COMPOSITE BOUNDARY SURVEY PROVIDED BY JOHNSTON SURVEYING INC., KISSIMMEE FLORIDA, DATED AUGUST 12, 1999.
 - TOPOGRAPHIC INFORMATION SHOWN ON THIS DRAWING WAS PROVIDED BY BASE MAPPING CO. LTD BASED ON AN AERIAL PHOTOGRAPH TAKEN ON 18 MAY 2011.
 - THE WETLAND BOUNDARY INFORMATION SHOWN IS BASED ON: A FIELD SURVEY DATED 15 MAY 2002 BY JOHNSTON SURVEYING INC. OF WETLANDS BOUNDARIES FLAGGED BY BIOLOGICAL RESEARCH ASSOCIATES, INC. (BRA), THE EXISTING JURISDICTIONAL WETLAND DETERMINATIONS, A PHOTO INTERPRETATION OF WETLAND BOUNDARIES BY BRA IN AREAS OUTSIDE THE LIMITS OF CONSTRUCTION, AND A FIELD SURVEY DATED 24 NOVEMBER 2010 BY PEAVEY & ASSOCIATES OF WETLAND BOUNDARIES FLAGGED BY ENTRIX, INC.
 - THE 100-YEAR FLOODPLAIN BOUNDARY SHOWN WAS PROVIDED BY THE OSCEOLA COUNTY GIS DEPARTMENT ON JANUARY 9, 2002 AND RECONFIRMED WITH THE OSCEOLA COUNTY GIS DEPARTMENT ON 24 SEPTEMBER 2010.
 - PHASE 2 (CELLS 5 THROUGH 7) HAS BEEN CONSTRUCTED AND HAS WASTE DISPOSED IN CELLS 5 AND 6. CELL 7 WASTE DISPOSAL OPERATIONS ARE PENDING FDEP APPROVAL.

0	NOV 2011	ISSUED FOR FDEP APPROVAL	JWO	VMD
REV	DATE	DESCRIPTION	DRN	APP

Geosyntec
consultants
13101 TELECOM DRIVE, SUITE 120
TEMPLE TERRACE, FLORIDA 33637 USA
PH: 813.558.0990 - FX: 813.558.9726
AUTHORIZATION NUMBER: 4321

WSI
Waste Services, Inc.
1501 OMNI WAY
ST. CLOUD, FLORIDA 34773
TEL: 407-891-3720 FAX: 407-891-3730

TITLE: **LEACHATE COLLECTION SYSTEM LAYOUT PLAN I**

PROJECT: **SOLID WASTE RENEWAL PERMIT**

SITE: **SOLID WASTE MANAGEMENT FACILITY**

DESIGN BY: VMD/JDQ DATE: NOVEMBER 2011
DRAWN BY: JWO/CMV PROJECT NO.: FL1962.02
CHECKED BY: VMD FILE: FL1962.02P090
REVIEWED BY: JDQ DRAWING NO.:
APPROVED BY: VMD 9 OF 45

VICTOR M. DAMASCENO - LICENSE NO. 72966

RECEIVED
NOV 14 2011
DEP Central Dist.

RECEIVED
NOV 14 2011
DEP Central Dist.

PERMIT DRAWING

