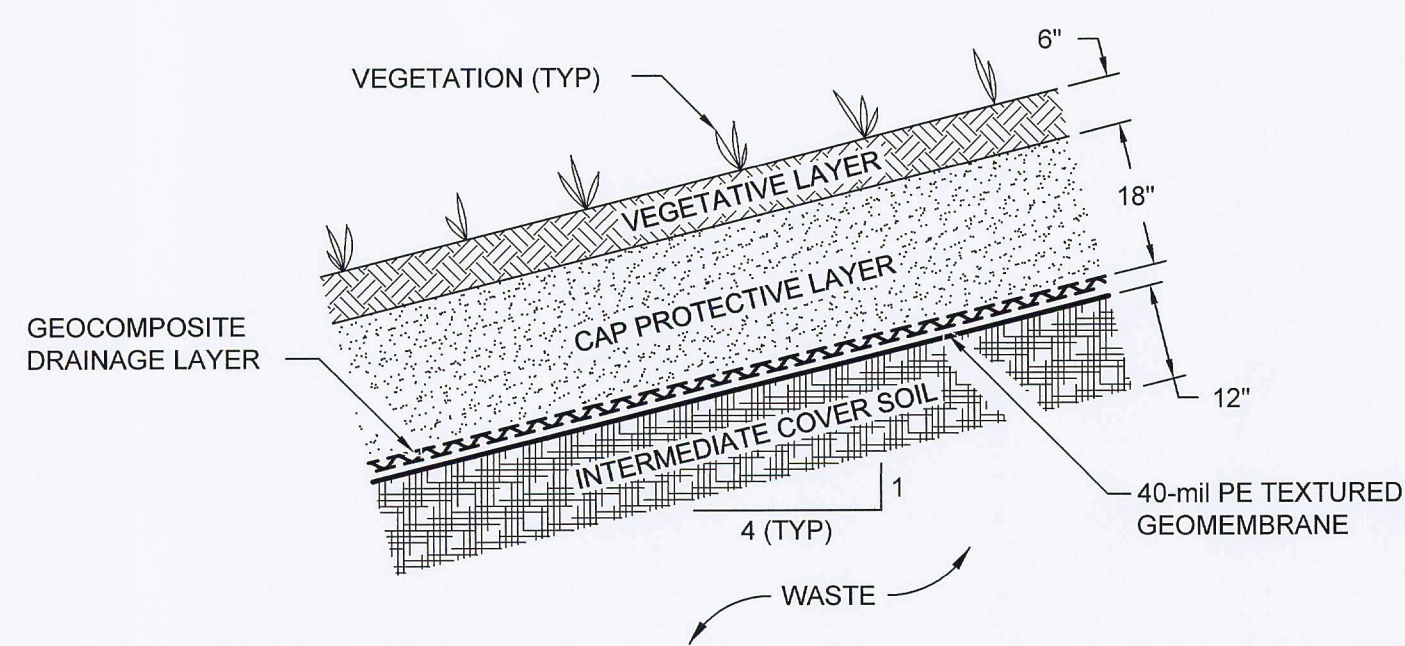
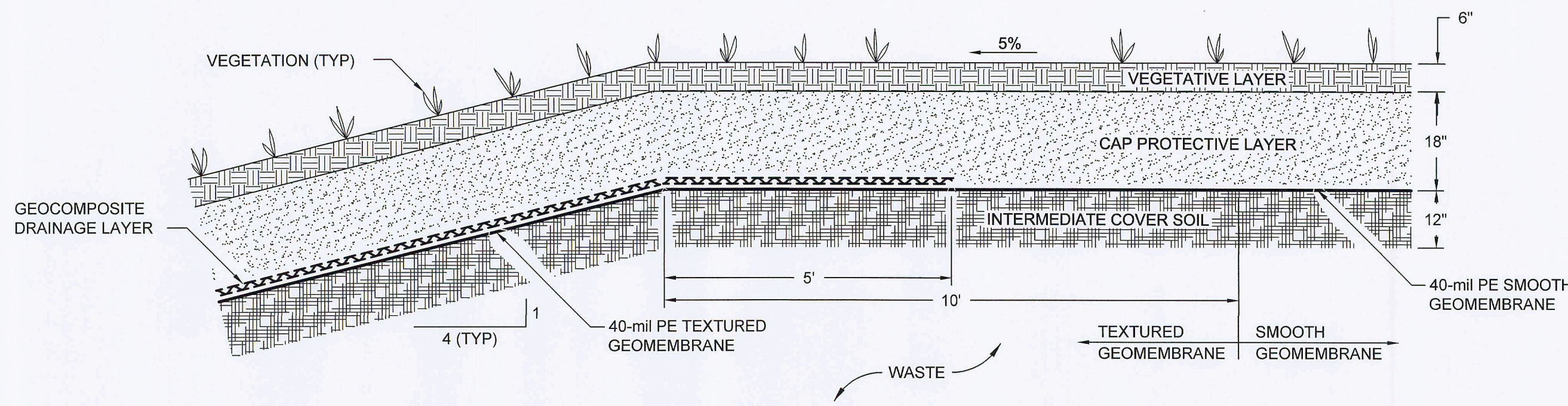


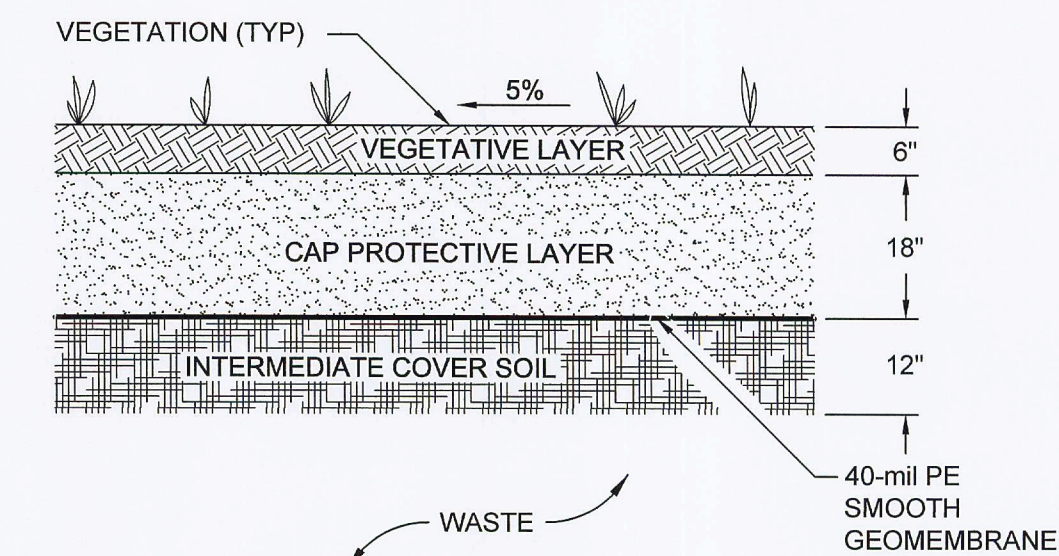
RECEIVED  
NOV 14 2011  
DEP Central Dist.



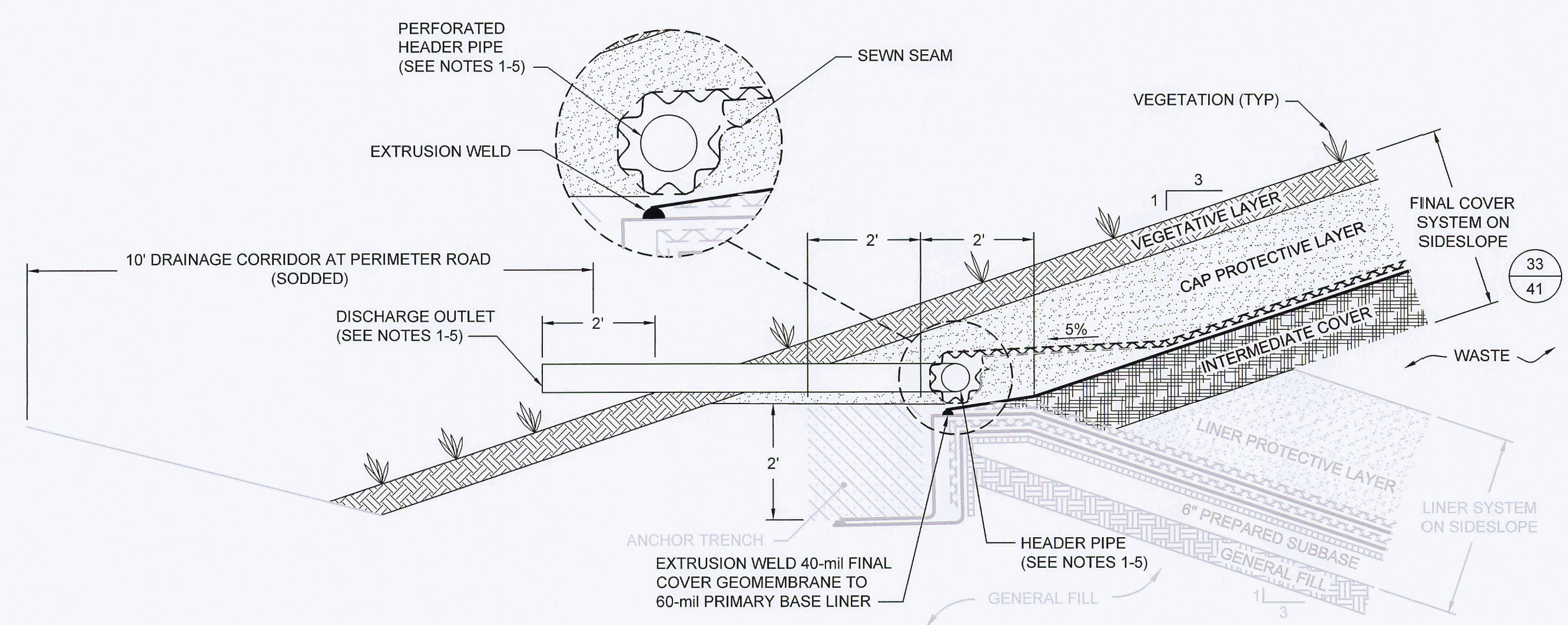
**33** DETAIL (TYPICAL)  
**11** FINAL COVER SYSTEM ON SIDESLOPE  
SCALE: 1" = 2'  
XREF: 04030005.DWG



**34** DETAIL (TYPICAL)  
**12** FINAL COVER SYSTEM AT CREST  
SCALE: 1" = 2'  
XREF: FL1962.02X1082.DWG



**35** DETAIL (TYPICAL)  
**11** FINAL COVER SYSTEM ON TOP DECK  
SCALE: 1" = 2'  
XREF: FL1962.02X1082.DWG



**36** DETAIL (TYPICAL)  
**11** FINAL COVER SYSTEM TIE-IN AT PERIMETER BERM ANCHOR TRENCH  
SCALE: 1" = 2'  
XREF: FL1962.02X002

NOTES:

1. HEADER AND DISCHARGE OUTLET PIPES SHALL BE CORRUGATED HDPE PIPE 4-IN IN DIAMETER. THE HEADER PIPE SHALL BE PERFORATED.
2. DISCHARGE OUTLET PIPES SHALL BE SPACED NO MORE THAN 250 FT APART.
3. HEADER PIPE SHALL BE INSTALLED AT A MINIMUM SLOPE OF 1%.
4. PIPE SHALL BE PROVIDED WITH AN OUTLET (T OR L) THAT DISCHARGES THE WATER INTO THE DRAINAGE SWALE.
5. HEADER PIPES SHALL BE TERMINATED WITH A CAP ON EITHER SIDE OF THE FINAL COVER DOWNCHUTES AND AT END LOCATIONS.
6. DETAILS ARE SHOWN TO SCALE AS NOTED EXCEPT FOR THE GEOSYNTHETICS WHICH ARE SHOWN AT AN EXAGGERATED SCALE FOR CLARITY.

0	NOV 2011	ISSUED FOR FDEP APPROVAL	JWO	VMD
REV	DATE	DESCRIPTION	DRN	APP

**Geosyntec** consultants  
13101 TELECOM DRIVE, SUITE 120  
TEMPLE TERRACE, FLORIDA 33637 USA  
PH: 813.558.0990 - FX: 813.558.9726  
AUTHORIZATION NUMBER: 4321

**WSI** Waste Services, Inc.  
1501 OMNI WAY  
ST. CLOUD, FLORIDA 34773  
TEL: 407-891-3720 FAX: 407-891-3730

TITLE: **FINAL COVER SYSTEM DETAILS**

PROJECT: **SOLID WASTE RENEWAL PERMIT**

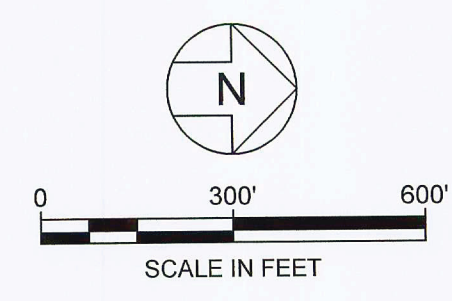
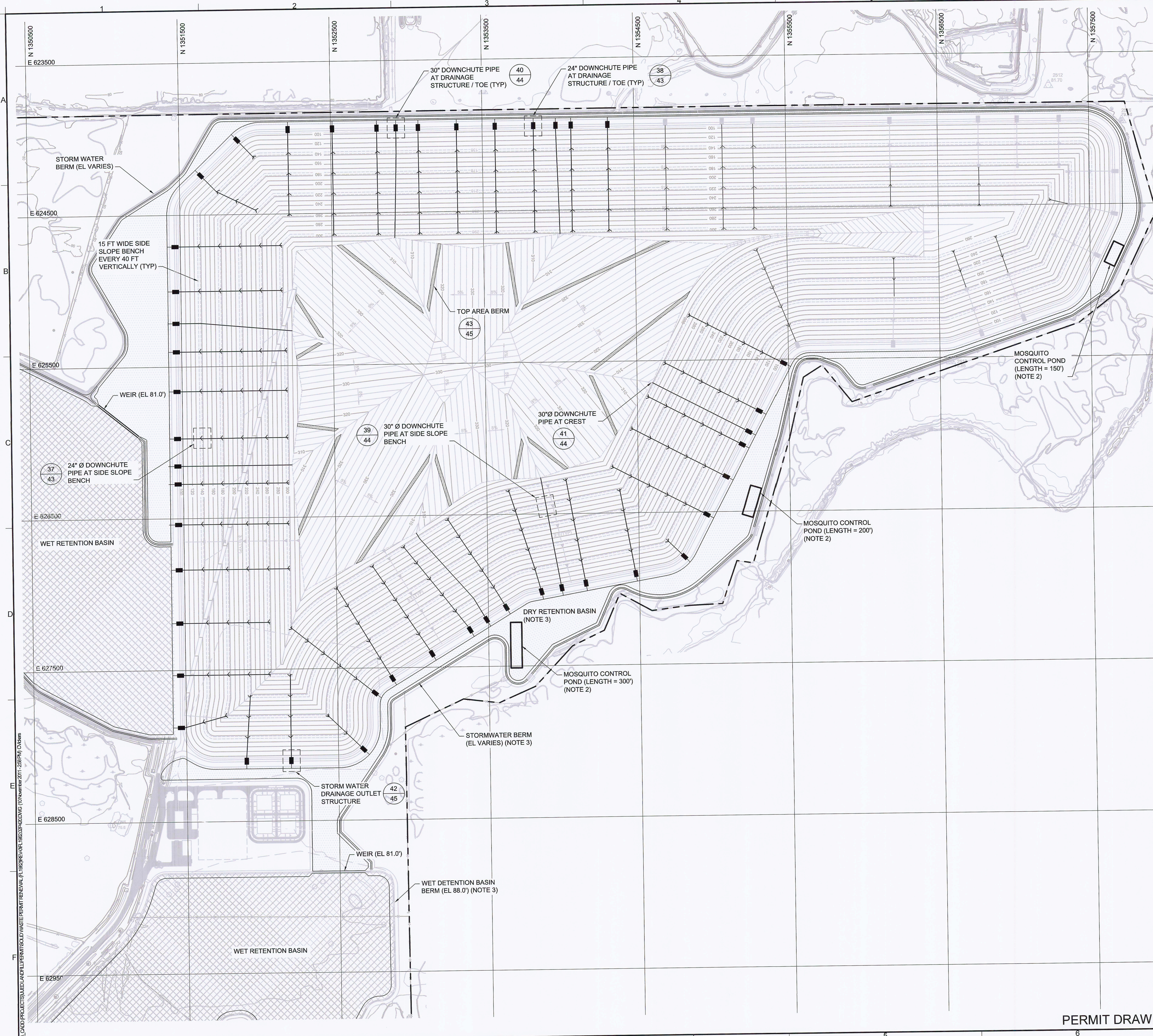
SITE: **SOLID WASTE MANAGEMENT FACILITY**

DESIGN BY: VMD/JDQ DATE: NOVEMBER 2011  
DRAWN BY: JWO/CMV PROJECT NO.: FL1962.02  
CHECKED BY: VMD FILE: FL1962.02P410  
REVIEWED BY: JDQ DRAWING NO.:  
APPROVED BY: VMD **41** OF **45**

VICTOR M. DAMASCENO - LICENSE NO. 72966  
NOV 10 2011  
STATE OF FLORIDA  
PROFESSIONAL ENGINEER

PERMIT DRAWING





RECEIVED  
NOV 14 2011  
DEP Central Dist.

**LEGEND**

	PROPERTY BOUNDARY
	EXISTING GROUND ELEVATION (FEET)
	EXISTING FENCE
	STORMWATER DRY DETENTION BASIN
	WET RETENTION / BORROW AREA BOUNDARY
	PERMITTED FINAL COVER ELEVATION (FEET)
	LATERAL EXPANSION FINAL COVER ELEVATION (FEET)
	EXISTING 18" DOWNCHUTE
	EXISTING DRAINAGE STRUCTURE
	PROPOSED 24" DOWNCHUTE
	PROPOSED 18" DOWNCHUTE
	PROPOSED 30" DOWNCHUTE
	PROPOSED DRAINAGE STRUCTURE
	PROPOSED TOP AREA BERM

**NOTES:**

- NORTHING AND EASTING COORDINATES SHOWN REPRESENT FLORIDA STATE PLANE EAST ZONE NORTH AMERICAN DATUM OF 1983 (NAD83). THE ELEVATIONS SHOWN REPRESENT NATIONAL GEODETIC VERTICAL DATUM OF 1929 (NGVD29) (FEET).
- MOSQUITO CONTROL PONDS SHOWN HEREON ARE IN ACCORDANCE WITH SHEET 36 AND DETAIL 29 ON SHEET 50 OF THE SOLID WASTE PERMIT DRAWINGS DATED 17 MAY 2002 (LAST REVISED 16 SEPTEMBER 2002).
- THESE SECTIONS AND/OR DETAILS WERE INCLUDED IN THE VERTICAL EXPANSION PERMIT DRAWINGS DATED SEPTEMBER 2007. THERE ARE NO SUBSTANTIAL CHANGES TO THESE SECTIONS AND/OR DETAILS. THEREFORE, THESE SECTIONS AND/OR DETAILS ARE NOT INCLUDED IN THIS PERMIT DRAWING SET.
- TOPOGRAPHIC INFORMATION SHOWN ON THIS DRAWING WAS PROVIDED BY BASE MAPPING CO. LTD BASED ON AN AERIAL PHOTOGRAPH TAKEN ON 18 MAY 2011.

0	NOV 2011	ISSUED FOR FDEP APPROVAL	JWO	VMD
REV	DATE	DESCRIPTION	DRN	APP

**Geosyntec**  
consultants  
13101 TELECOM DRIVE, SUITE 120  
TEMPLE TERRACE, FLORIDA 33637 USA  
PH: 813.558.0990 - FX: 813.558.9726  
AUTHORIZATION NUMBER: 4321

**WSI**  
1501 OMNI WAY  
ST. CLOUD, FLORIDA 34773  
TEL: 407-891-3720 FAX: 407-891-3730

**TITLE:** STORM WATER MANAGEMENT PLAN

**PROJECT:** SOLID WASTE RENEWAL PERMIT RECEIVED  
NOV 14 2011

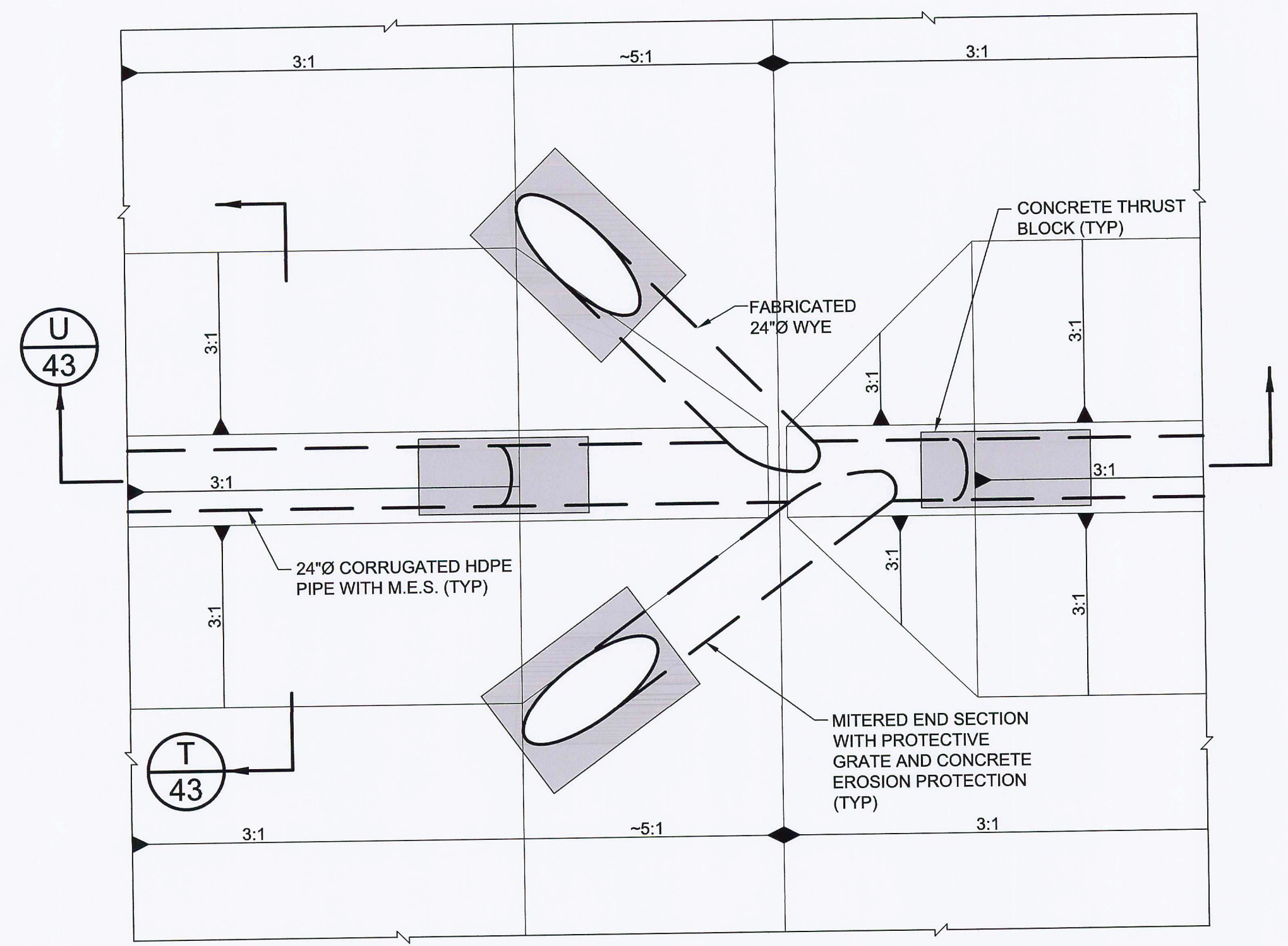
**SITE:** SOLID WASTE MANAGEMENT FACILITY DEP Central Dist.

DESIGN BY:	VMD/JDQ	DATE:	NOVEMBER 2011
DRAWN BY:	JWO/CMV	PROJECT NO.:	FL1962.02
CHECKED BY:	VMD	FILE:	FL1962.02P420
REVIEWED BY:	JDQ	DRAWING NO.:	42 OF 45
APPROVED BY:	VMD		

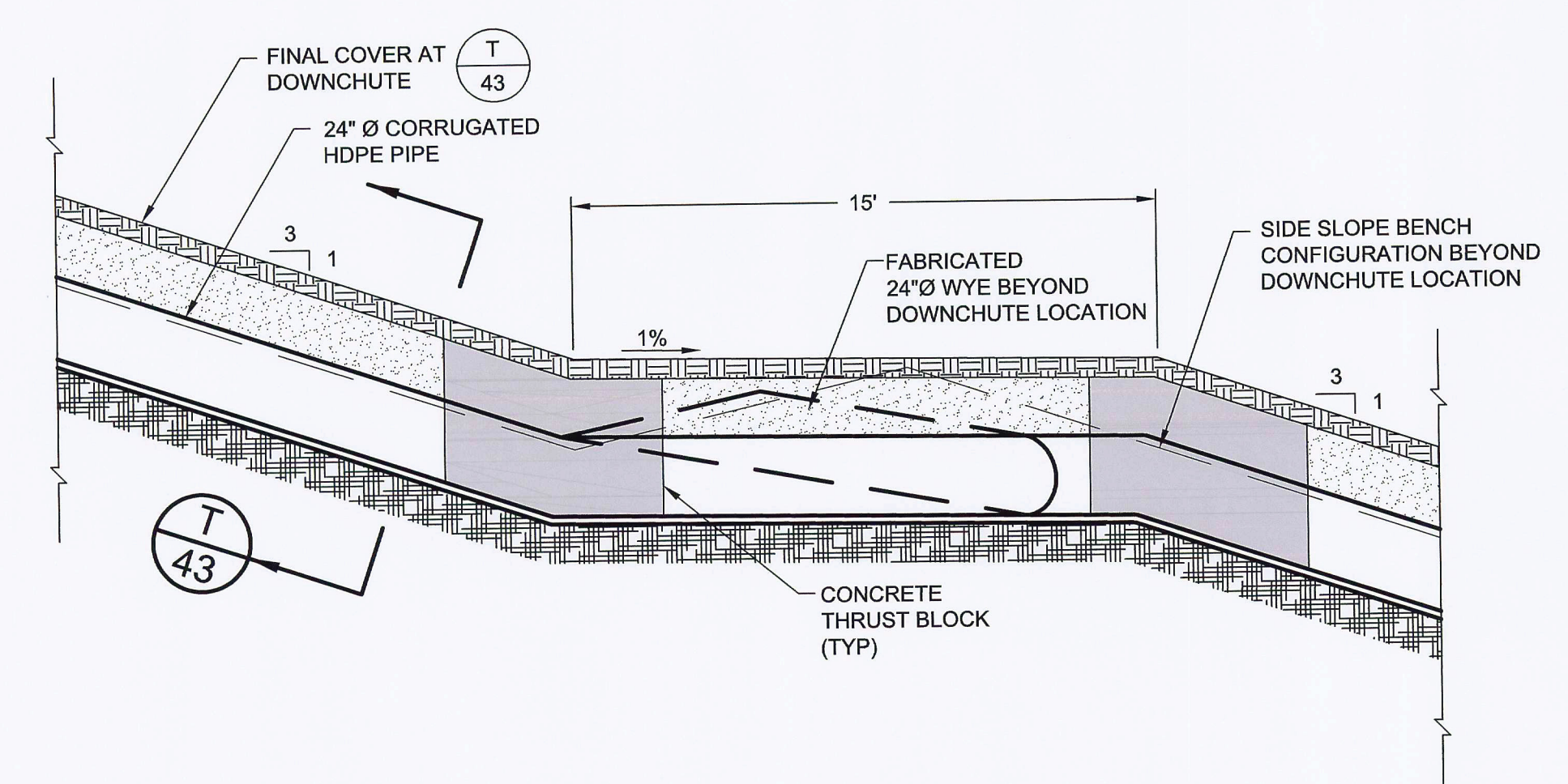
PERMIT DRAWING



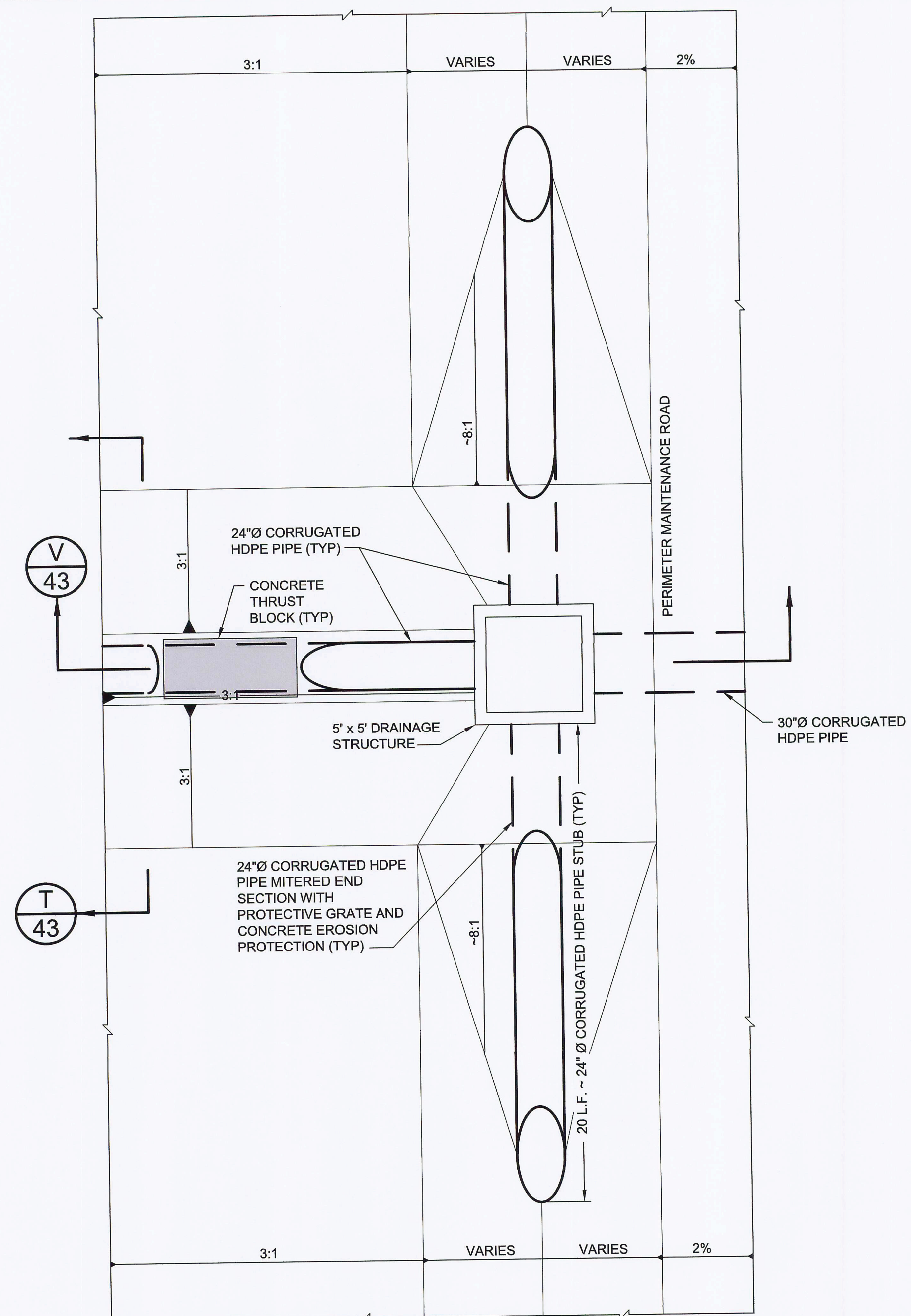
RECEIVED  
NOV 14 2011  
DEP Central Dist.



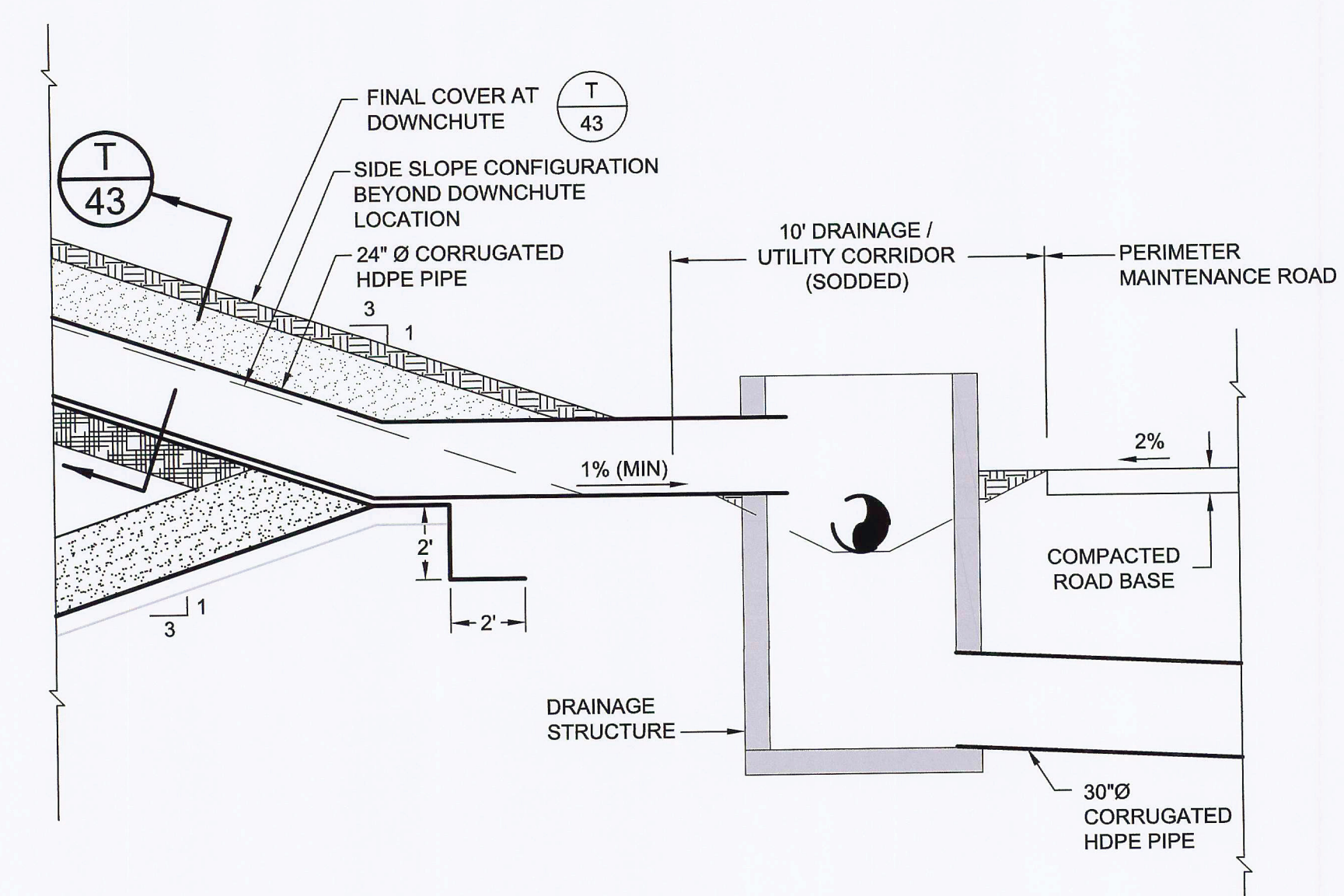
37 PLAN (TYPICAL)  
42 24" Ø DOWNCHUTE PIPE AT SIDE SLOPE BENCH  
SCALE: 1" = 4'  
XREF: FL1962.02P380



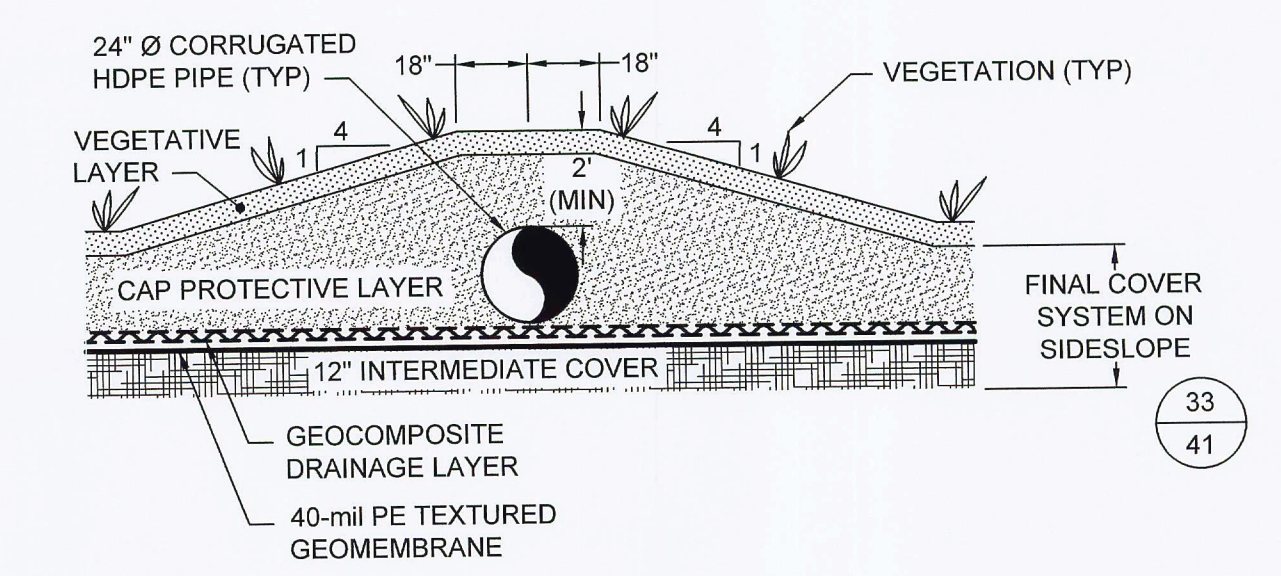
U SECTION (TYPICAL)  
43 24" Ø DOWNCHUTE PIPE AT SIDE SLOPE BENCH  
SCALE: 1" = 4'  
XREF: FL1962.02P380



38 PLAN (TYPICAL)  
42 24" Ø DOWNCHUTE PIPE AT DRAINAGE STRUCTURE / TOE  
SCALE: 1" = 4'  
XREF: FL1962.02P380



V SECTION (TYPICAL)  
43 24" Ø DOWNCHUTE PIPE AT DRAINAGE STRUCTURE / TOE

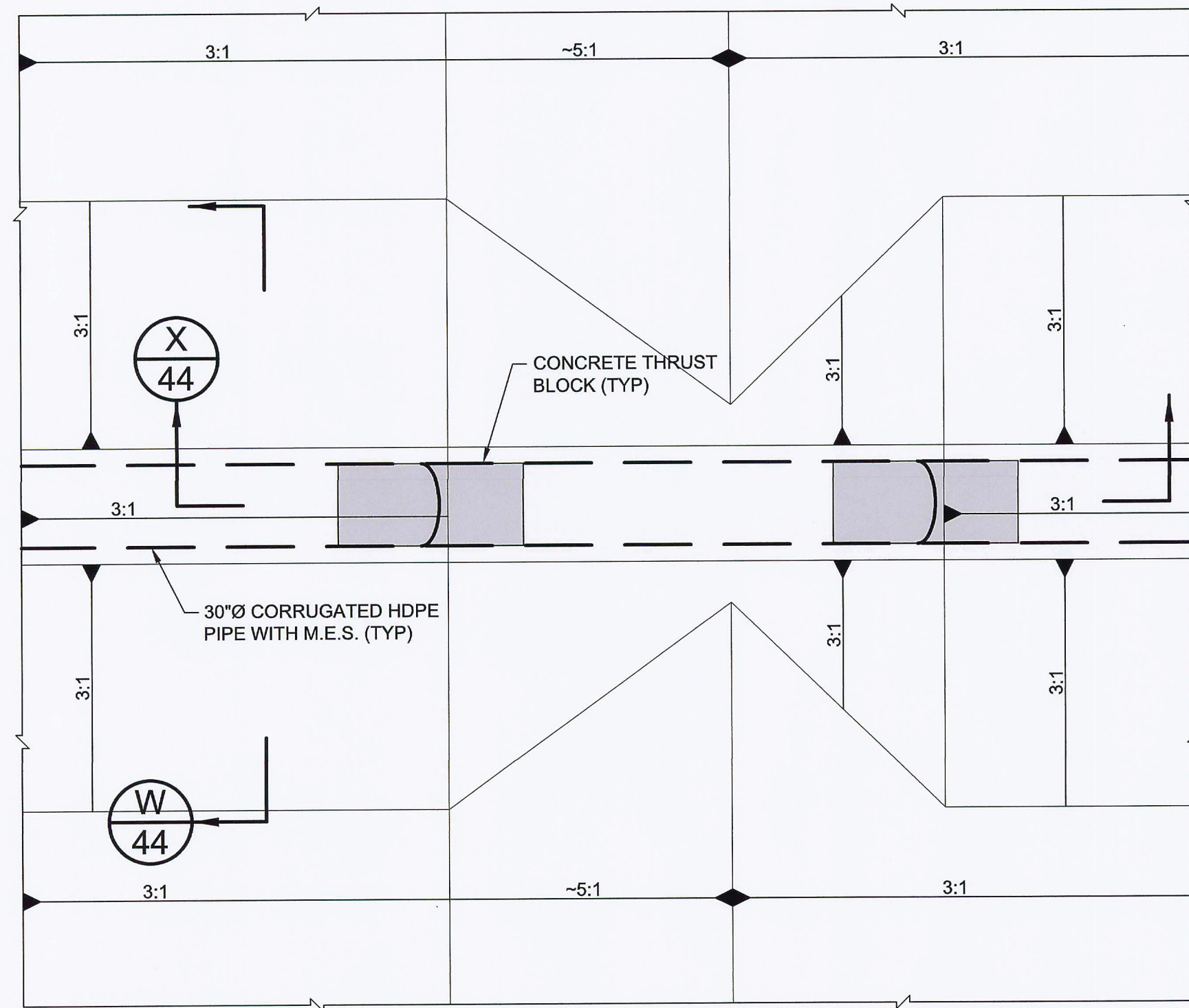


T SECTION (TYPICAL)  
43 FINAL COVER CONFIGURATION AT DOWNCHUTE LOCATIONS  
SCALE: 1" = 4'  
XREF: FL1962.02P380

0	NOV 2011	ISSUED FOR FDEP APPROVAL	JWO	VMD
REV	DATE	DESCRIPTION	DRN	APP
Geosyntec consultants		WSI Waste Services, Inc.		
13101 TELECOM DRIVE, SUITE 120 TEMPLE TERRACE, FLORIDA 33637 USA PH: 813.558.0990 - FX: 813.558.9726 AUTHORIZATION NUMBER: 4321		1501 OMNI WAY ST. CLOUD, FLORIDA 34773 TEL: 407-891-3720 FAX: 407-891-3730		
TITLE: STORM WATER MANAGEMENT DETAILS I				
PROJECT: SOLID WASTE RENEWAL PERMIT			RECEIVED NOV 14 2011 DEP Central Dist.	
SITE: SOLID WASTE MANAGEMENT FACILITY				
DESIGN BY: VMD/JDQ		DATE: NOVEMBER 2011		
DRAWN BY: JWO/CMV		PROJECT NO.: FL1962.02		
CHECKED BY: VMD		FILE: FL1962.02P430		
REVIEWED BY: JDQ		DRAWING NO.: 43 OF 45		
APPROVED BY: VMD		DATE: 11/10		

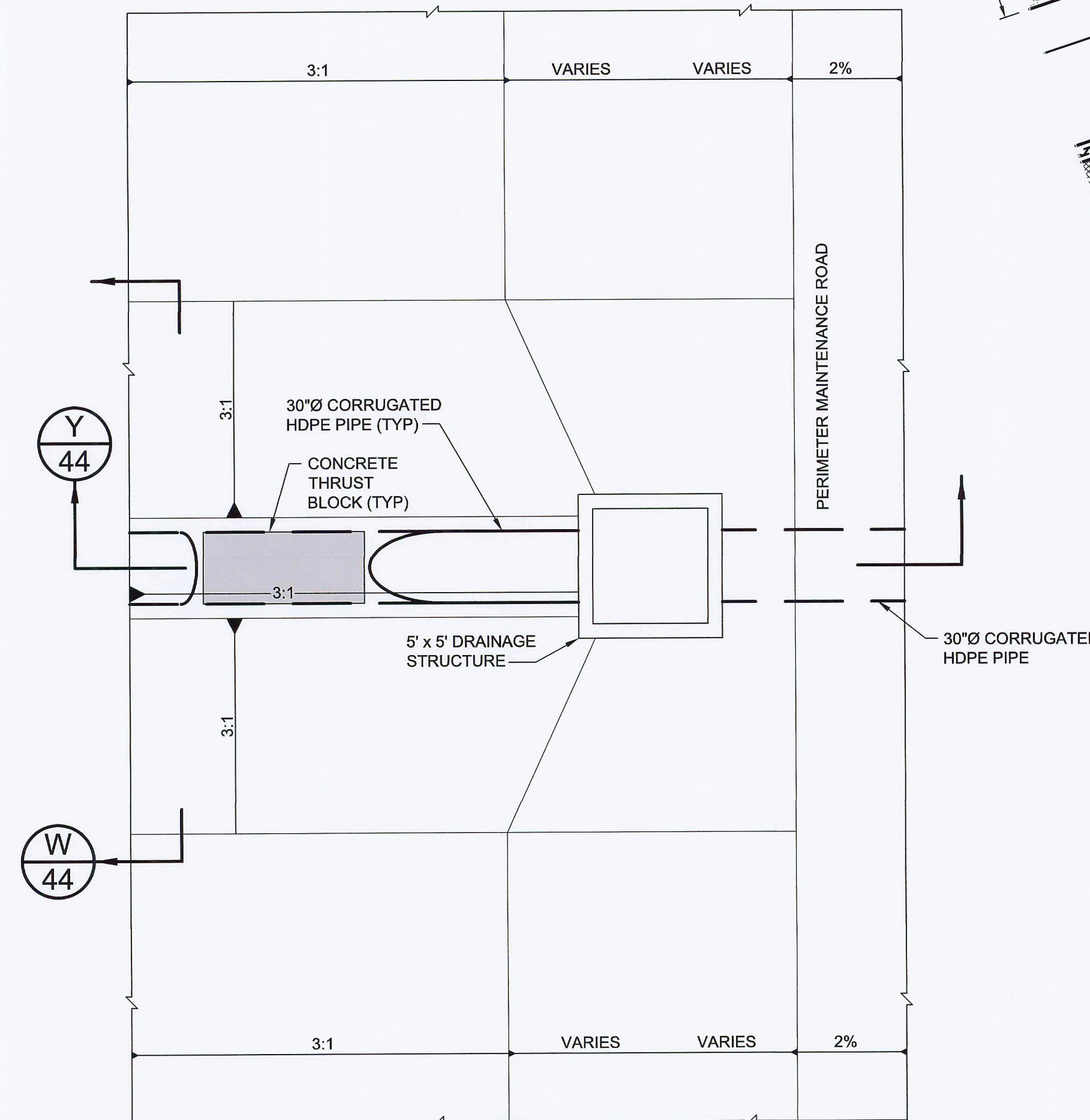
PERMIT DRAWING





39 PLAN (TYPICAL)  
42 30" DOWNCHUTE PIPE AT SIDE SLOPE BENCH

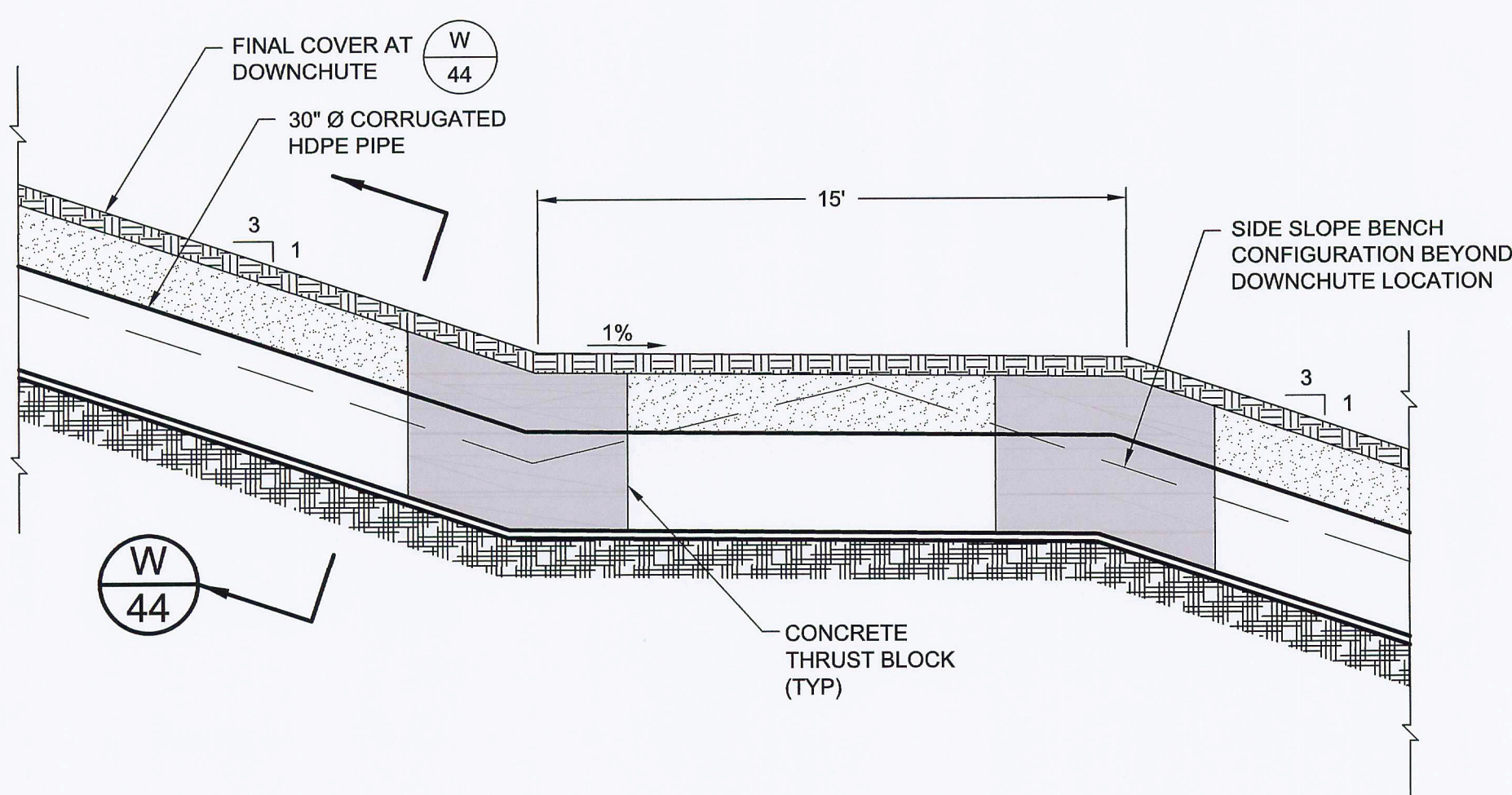
SCALE: 1" = 4'



40 PLAN (TYPICAL)  
42 30" DOWNCHUTE PIPE AT DRAINAGE STRUCTURE / TOE

SCALE: 1" = 4'

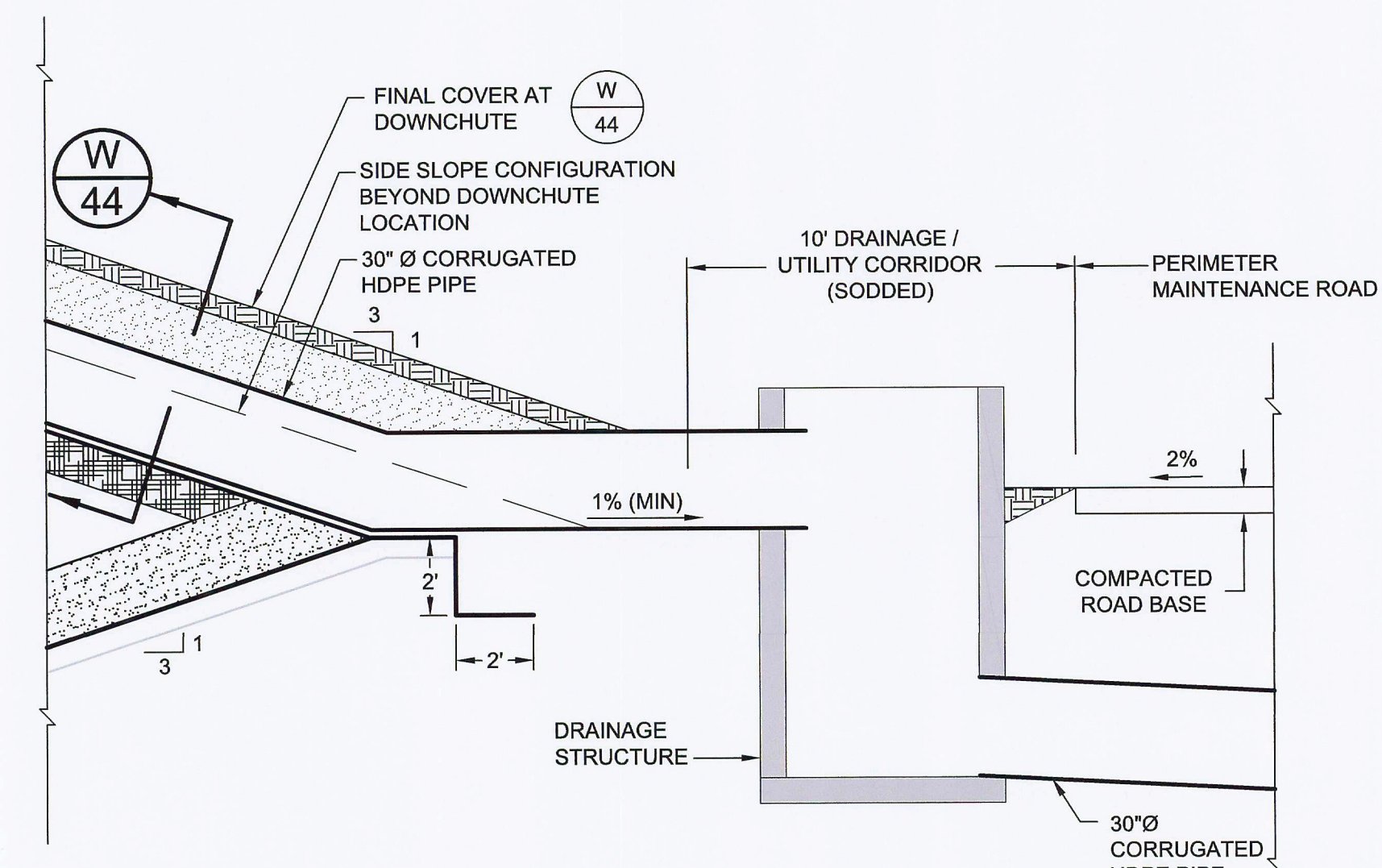
XREF: FL1962.02P390



X SECTION (TYPICAL)  
44 30" DOWNCHUTE PIPE AT SIDE SLOPE BENCH

SCALE: 1" = 4'

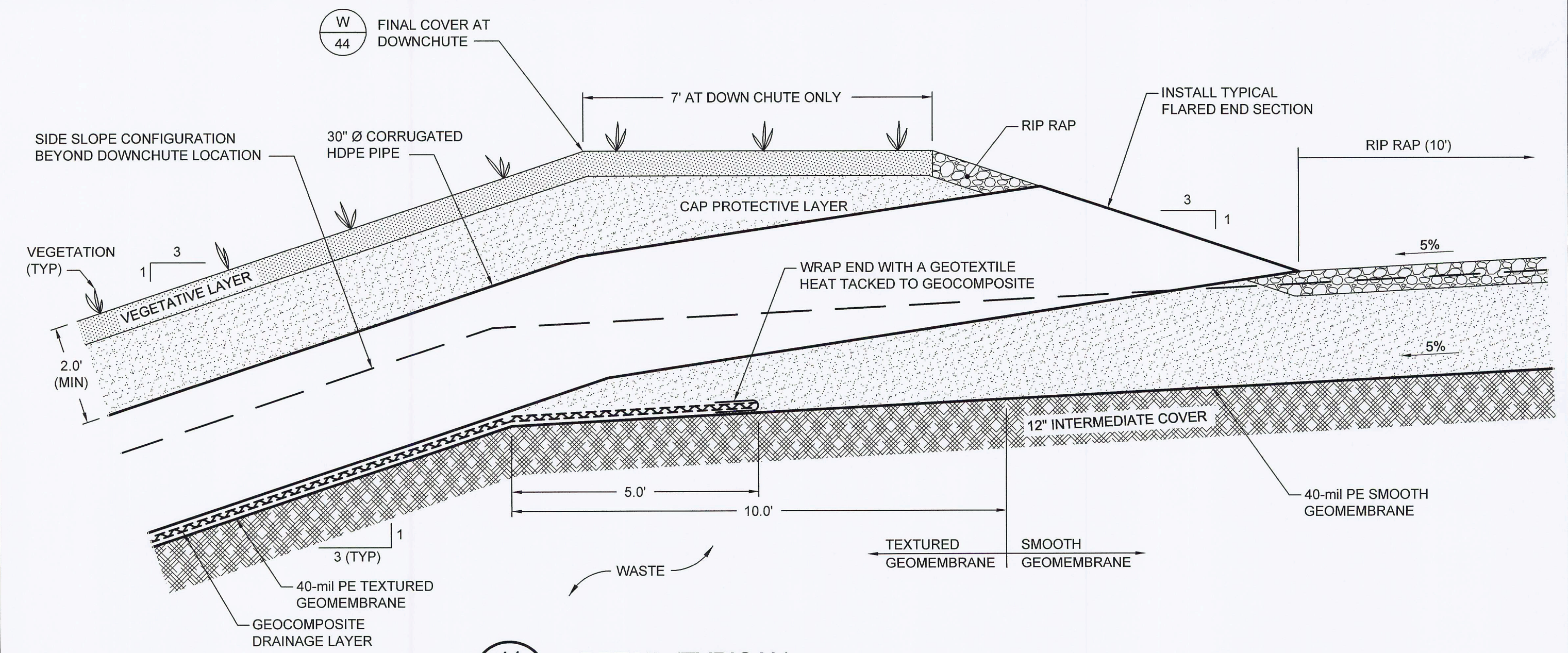
XREF: FL1962.02P390



Y SECTION (TYPICAL)  
44 30" DOWNCHUTE PIPE AT DRAINAGE STRUCTURE / TOE

SCALE: 1" = 4'

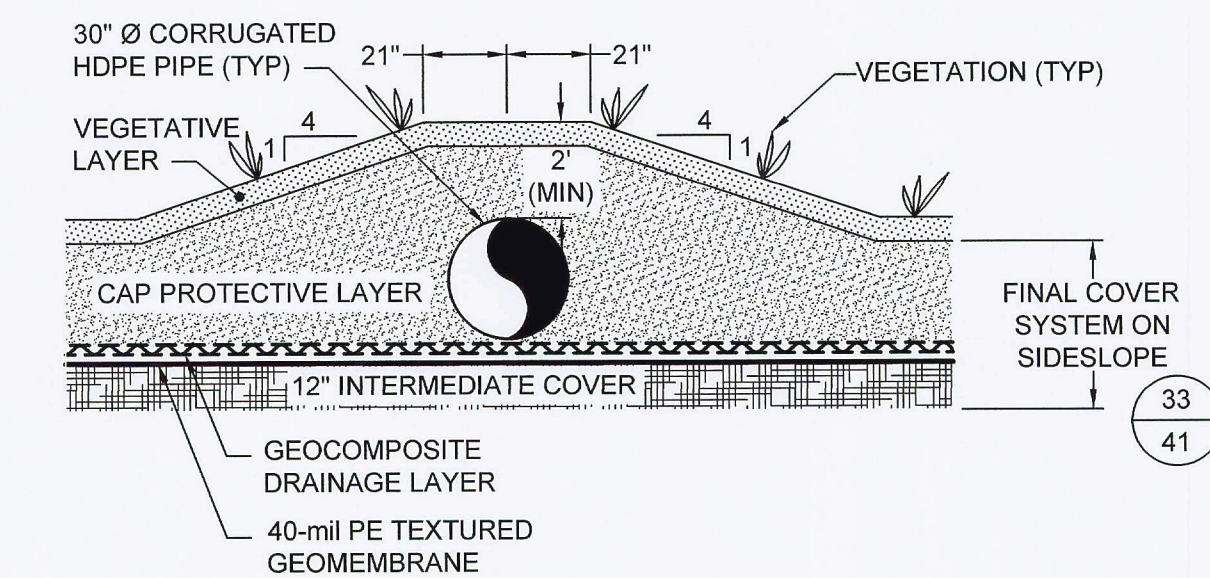
XREF: FL1962.02P390



41 DETAIL (TYPICAL)  
42 30" DOWNCHUTE AT CREST

SCALE: 1" = 2'

XREF: FL1962.02P390



W SECTION (TYPICAL)  
44 FINAL COVER CONFIGURATION AT 30" DOWNCHUTE LOCATIONS

SCALE: 1" = 4'

XREF: FL1962.02P390

RECEIVED  
NOV 14 2011  
DEP Central Dist

REV	DATE	DESCRIPTION	DRN	APP
0	NOV 2011	ISSUED FOR FDEP APPROVAL	JWO	VMD

**Geosyntec**  
consultants

13101 TELECOM DRIVE, SUITE 120  
TEMPLE TERRACE, FLORIDA 33637 USA  
PH: 813.558.0990 - FX: 813.558.9726  
AUTHORIZATION NUMBER: 4321

**WSI**  
Waste Services, Inc.

1501 OMNI WAY  
ST. CLOUD, FLORIDA 34773  
TEL: 407-891-3720 FAX: 407-891-3730

TITLE: **STORM WATER MANAGEMENT DETAILS II**

PROJECT: **SOLID WASTE RENEWAL PERMIT** RECEIVED **NOV 14 2011**

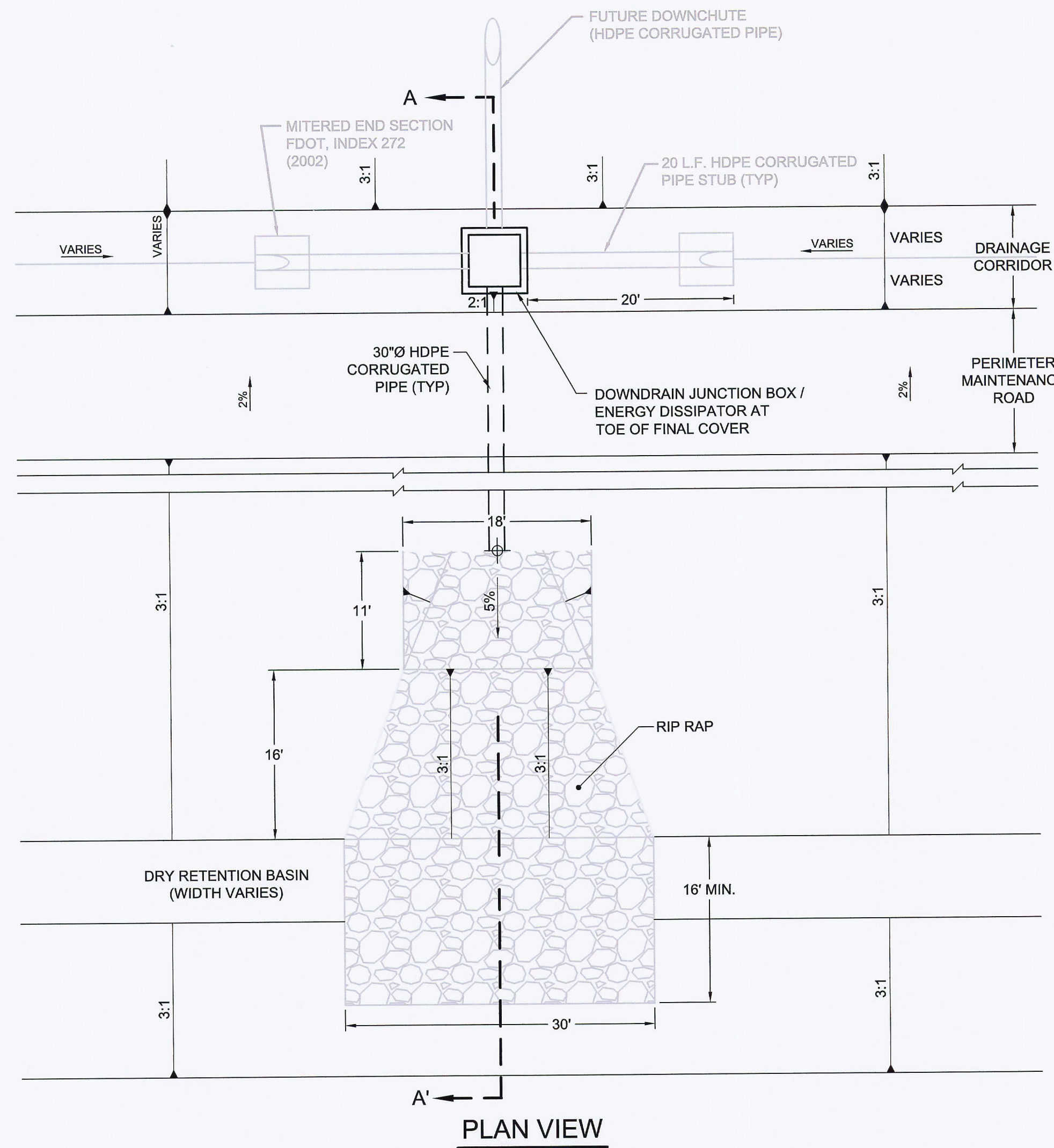
SITE: **SOLID WASTE MANAGEMENT FACILITY** DEP Central Dist

VICTOR DAMASCENO - LICENSE NO. 72966

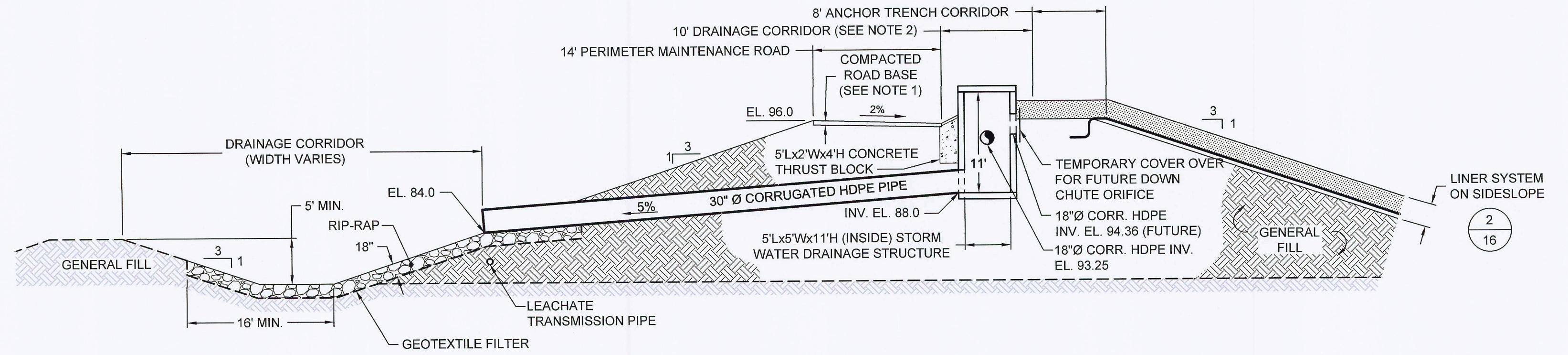
DESIGN BY:	VMD/JDQ	DATE:	NOVEMBER 2011
DRAWN BY:	JWO/CMV	PROJECT NO.:	FL1962.02
CHECKED BY:	VMD	FILE:	FL1962.02P440
REVIEWED BY:	JDQ	DRAWING NO.:	44 OF 45
APPROVED BY:	VMD		

PERMIT DRAWING





PLAN VIEW



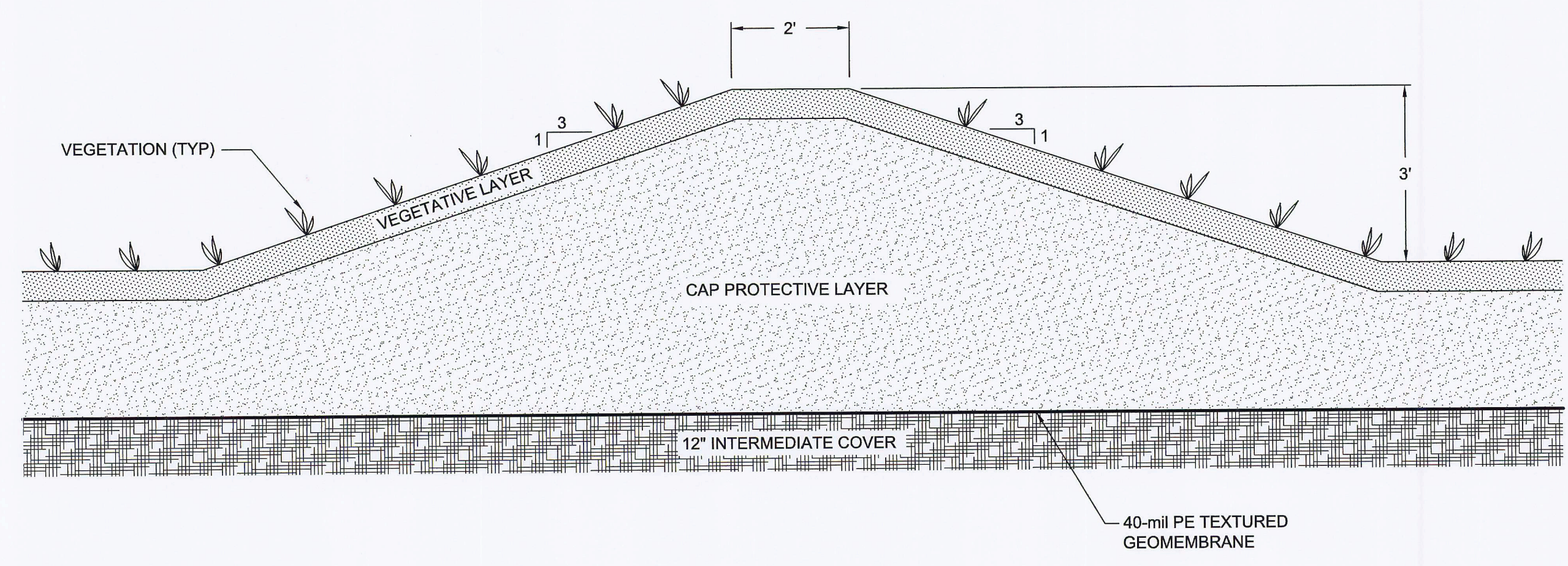
SECTION A-A'

NOTES:

1. COMPACTED ROAD BASE SHALL BE CONSTRUCTED IN ACCORDANCE WITH SPECIFICATIONS TO A TOTAL THICKNESS OF 10 INCHES.
2. DRAINAGE CORRIDOR ON PERIMETER BERM SHALL BE GRADED TO UNIFORMLY DRAIN FROM THE CELL SUMP TO THE DRAINAGE STRUCTURES. SWALE SHALL HAVE MINIMUM DEPTH OF 6 INCHES.

RECEIVED  
NOV 14 2011  
DEP Central Dist

42 DETAIL (TYPICAL)  
42 STORM WATER DRAINAGE OUTLET STRUCTURE  
SCALE: 1" = 10'  
XREF: FL1962.02X3008



43 DETAIL (TYPICAL)  
42 TOP AREA BERM  
SCALE: 1" = 2'  
XREF: FL1962.02X3008

PERMIT DRAWING

0	NOV 2011	ISSUED FOR FDEP APPROVAL	JWO	VMD
REV	DATE	DESCRIPTION	DRN	APP
13101 TELECOM DRIVE, SUITE 120 TEMPLE TERRACE, FLORIDA 33637 USA PH: 813.558.0960 - FX: 813.558.9726 AUTHORIZATION NUMBER: 4321				
1501 OMNI WAY ST. CLOUD, FLORIDA 34773 TEL: 407-891-3720 FAX: 407-891-3730				
TITLE: STORM WATER DRAINAGE STRUCTURE DETAILS				
PROJECT: SOLID WASTE RENEWAL PERMIT			RECEIVED NOV 14 2011	
SITE: SOLID WASTE MANAGEMENT FACILITY DEP Central Dist				
		DESIGN BY: VMD/JDQ	DATE: NOVEMBER 2011	
		DRAWN BY: JWO/CMV	PROJECT NO.: FL1962.02	
		CHECKED BY: VMD	FILE: FL1962.02P450	
		REVIEWED BY: JDQ	DRAWING NO.: 45 OF 45	
		APPROVED BY: VMD		
VICTOR DAMASCENO - LICENSE NO. 72966				