



April 15, 2008

Dept. of Environmental
Protection

APR 15 2008

Ms. Susan Pelz, P.E.
Solid Waste Section
Florida Department of Environmental Protection
Southwest District Office
13051 North Telecom Parkway
Temple Terrace, FL 33637

Southwest District

Subject: Southeast County Landfill, Hillsborough County
Capacity Expansion Section 9 Construction
Permit Number 35435-011-SC/01
Monthly Update

Dear Ms. Pelz:

On behalf of the Hillsborough County Solid Waste Management Department (County), Jones Edmunds (JE) is submitting the Section 9 Construction Monthly Summary Report for April, 2008. Please insert this report in the 3-ring binder provided previously to the Department. This report summarizes the following construction activities:

- 1) A narrative explaining the status (and any delays) of major stages of the construction (i.e., liner, GCL, tanks, piping, liner penetrations, etc.).
- 2) A summary of submittals and change order requests.
- 3) Weekly progress meeting minutes.
- 4) Color copies of photographs which are representative of the typical construction activities for the reporting period, and photographs which show overall views and details of major stages of construction, etc.

If you have any questions, please contact Dick Davis or myself.

Sincerely,

Joseph H. O'Neill, P.E.
Solid Waste Department Manager

cc: Patty Berry, SWMD
Larry E. Ruiz, SWMD
Megan Miller, SWMD

052049
April 15, 2008

\\Tpa-srv\work\08449 - Hillsborough\030 SCLF General Services\4000 - Phase 4 Site A Capacity Exp\4300\Section 9 Const. Mgmt\3230 Monthly Status Reports to FDEP\April cover letter .doc

324 South Hyde Park Avenue
Suite 250
Tampa, FL 33606

813.258.0703 Phone
813.254.6860 Fax
www.jonesedmunds.com



April 15, 2008

Ms. Susan J. Pelz, P.E.
Solid Waste Section
Florida Department of Environmental Protection
Southwest District Office
13051 North Telecom Parkway
Temple Terrace, FL 33637

Subject: Southeast County Landfill, Hillsborough County
Capacity Expansion Section 9 Construction
Permit Number: 35435-011-SC/01
Monthly Update

Dear Ms. Pelz:

On behalf of the Hillsborough County Solid Waste Management Department (County), Jones Edmunds (JE) is submitting the attached monthly summary of the construction activities for March 16, 2008 through April 15, 2008 conducted for the above-referenced project.

Summary of Activities

Attachment A contains weekly Project Manager Progress Reports of the activities completed for each week of the project. In general, the following activities have occurred on the project since the last monthly report:

Activities

- Operation of the Soil Recovery Area (SRA) as a borrow soil source for the construction of Section 9 has been completed. The soils from the SRA facility were used for portions of Section 9 backfill and the Protective Cover. Final grading of the SRA in accordance with the ERP Permit is now underway.
- Installation of the 12-inch layer of protective cover soil on the bottom and 24-inch on the side slopes was started on February 25, 2008 and has been completed.
- Geosynthetics installation for the Section 9 Capacity Expansion for the primary and secondary liner systems began in late January 2008 and was completed in late March, 2008. Installation of the rain tarp has also been completed.
- The Section 7/8 tie-in area was cleared of soil and debris and the Section 7/8 liner in preparation for the Section 9 tie-in was exposed. Excavation to remove the Section 7 gas vent system is complete. The geosynthetics tie-in to Section 7/8 is now complete.

324 South Hyde Park Avenue
Suite 250
Tampa, FL 33606

813.258.0703 Phone
813.254.6860 Fax
www.jonesedmunds.com

- The planned relocation of the Section 7 storm water down-chute at the southwest corner of Section 7 is approximately completed.
- The leachate collection pipe trench including perforated collection pipe, drainage media, and geotextile wrap and has been completed.
- Placing of the 12 inch thick layer of tire chips over the northern and middle cells of Section 9 has been completed.
- Construction of the 4 foot by 8 foot box culvert for storm water drainage into Basin C was started on March 6, 2008 has been completed
- Construction of the 3 foot by 6 foot box culvert for storm water drainage at the Section 9 leachate pump location has been placed and headwall construction completed.
- Construction of the armored Swale 'B' and re-grading of the two 30 inch diameter ADS storm water drainage pipes, which began on March 26, 2008, is approximately 95 percent complete.
- Turbidity measurements are being taken on a regular basis, up to six times per week, in mine cut #1 adjacent to Basin C. Results for this reporting period show all the turbidity determinations to be below the FDEP ERP Permit criteria of 39.12 NTU (29 NTU greater than the background of 10.12 NTU).
- The ERP Section of FDEP visited the Basin C project site on two occasions, February 5, 2008 and March 20, 2008, to observe the wetlands delineation and the 25 foot offset stake locations.
- Weekly water level measurements are made at four mine cut ponds around the landfill site. Staff gauge readings indicate no significant change in the levels.
- Basin C construction began on March 22, 2008 with overburden stripping. Relocation of the berms and excavation of the basin bottom to the new design elevation is underway.

Summary of Submittals/Change Orders

Provided in Attachment B is an updated list of submittals reviewed by JE for the project.

The following minor revision(s) to the permit plans were completed during this report period:

- The back slope of the armored Swale 'B' was changed from design slope of one vertical to three horizontal to a slope of one vertical to two horizontal. This change was necessary because of the location of the existing leachate force main south of the swale. This change will be included on the construction as-built drawings.
- A 4-inch flanged pipe stub with a cap was tapped into the side of each of the three 24-inch leachate risers approximately one foot from the top of the riser. The pipe stub will provide an access point in the future for landfill gas extraction, as needed.

The following changes to the specifications were allowed in the submittal review process during this report period:

- No Specification changes were made to report this period.

Table 1 provides a summary of revisions to the drawings and specifications provided in previous monthly update reports. The detailed revision and explanations can be found in the Monthly Report listed in the table.

Table 1: Revisions to Drawings and Specification in Previous Monthly Updates

Drawing Revisions	Monthly Report
Silt fence location – Drawing 4a	August 15, 2007
“Existing” 2-24” RCP Storm water – Drawing S-5	November 15, 2007
Saddle T to replace reducing T for ARV connection – Drawing 10C	November 15, 2007
Section 7 down-chute alignment modification	February 15, 2008
Geomembrane under GCL in sump area to elev. 126 not 127 as on Drawing 7	March 15, 2008
Excavation limit in southwest area of Section 9 constructed to Elevation 117 – see Drawing 6.	March 15, 2008
Leachate collection pipe clean-out riser.	March 15, 2008
Leachate force main isolation gate valve and check valve.	March 15, 2008
Swale ‘B’ back slope change to 1:2 from 1:3.	April 15, 2008
4-inch pipe stub added to each leachate riser pipe as future gas port.	April 15, 2008
Specification Revisions	Monthly Report
Specification 02775 Part 2.01D – GCL permeability testing	August 15, 2007
Specification 02778 Part 2.02G – Geomembrane tensile properties	August 15, 2007
Specification 02778 Part 2.02G – Geomembrane OIT	August 15, 2007
Specification 02773 Part 2.03 – Peel strength requirement from 0.7 to 0.4 ppi	December 14, 2007

Weekly Progress Meeting Summary & Updated Schedule

Attachment C contains the summary reports for Progress Meetings #31, #32, #33, & #34 conducted on March 18, March 25, April 1, and April 8, 2008, respectively. The current project schedule updated by the Contractor is provided with the summary report for Progress Meeting #34.

Photographs

Photographs that are representative of the construction activities conducted are contained in Attachment D.

If you have any questions, please contact us.

Sincerely,



Joseph H. O'Neill, P.E.
Solid Waste Division Manager



052045
April 15, 2008

Ms. Susan J. Pelz, P.E.

April 15, 2008

Page 4

cc: Patty Berry, SWMD
Larry E. Ruiz, SWMD
Megan Miller, SWMD

T:\08449 - Hillsborough\030 SCLF General Services\4000 - Phase 4 Site A Capacity Exp\4300\Section 9 Const. Mgmt\3230 Monthly Status Reports to FDEP\February\April 15 Monthly Status Report Final.doc

ATTACHMENT A

PROJECT MANAGER REPORT # 30 - 3/10/08 thru 3/16/08

Activities Completed This Report Period:

- 1 Protective cover approx. 60% complete
- 2 Tire chips approx. 33% complete
- 3 For this report ing period 6 turbidity tests were completed; 3/10 = 16.4, 3/11 = 15.9, 3/12 = 14.1, 3/13 = 12.0
3/14 = 24.0, 3/15 = 20.3 NTU's - all results were below permit requirement of 39.12 NTU's
- 4 Staff gauge measurements - on 3/13 were; SG-1=2.08, SG-2=2.7, SG-3=2.4, SG-4=1.9
no significant change this report period
- 5 Subbase survey completed
- 6 ARV installation completed
- 7 Box culvert installation 70% complete
- 8 Force main installation 4% complete
- 9 Leachate sump installation initiated
- 10 Geosynthetics progress:

Item	Installed - period	to date		total req.	% complete
		secondary	primary		
GCL	60,000	667,462	0	667,462	100.00%
Geom	160,000	709,000	670,000	1,418,688	97.20%
Geocom	160,000	680000	630000	1,359,088	96.39%

Schedule:

- 1 Day 237 - Remaining 40 days
- 2 Status: Contractor schedule - No changes
Change in Project Completion date, 4/27/08

Contractor Submittals:

Submittals	Period	To Date
1 Total Submitted	0	56
2 Revise & re-submit	0	-
3 Reject	0	-
4 Remaining from Contractor		34

DEP Submittals

- 1 Letter notification of planned liner penetration
- 2 Wells installed, developed & sampled by March 31, 2008.
- 3 March Monthly Report

Change Orders:

No Activity This Period

Cost Summary:

Bid Price	\$7,099,984.50
Additions	\$0.00
Deductions	\$0.00
Total Cost	\$7,099,984.50
Spent to date	\$4,873,694.79 **
Retainage	\$487,369.48
Spent less retainage	\$4,386,325.31
Remaining	\$2,226,289.71
% complete	68.64%

1st pay request re-submitted 10/23/07 - Approved for payment by County	\$666,690.30
2nd pay request submitted 11/13/07 - to County 11/19/07, appr'd 12/05/07	\$488,967.97
3rd pay request submitted 12/7/07 - JE to County 12/17/07, appr'd	\$1,441,411.35
4th pay request submitted 2/8/08 - County approved, 2/19/08	\$1,099,185.34
5th pay request submitted 3/4/08 - JE reviewing	\$690,070.35
** subject to approval	
total	\$4,386,325.31

Projected Activity Next Progress Period:

- 1 Complete geosynthetics installation
- 2 Continue turbidity & staff gauge measurements
- 3 Continue with tire chips placement
- 4 Continue with force main installation
- 5 Complete protective cover placement
- 6 Continue with Leachate sump installation
- 7 Complete box culvert
- 8 Initiate swale construction

Attachments:

Turbidity Test Results Graphic
Staff Gauge Results Graphic

PROJECT MANAGER REPORT # 31 - 3/17/08 thru 3/23/08

Activities Completed This Report Period:

- 1 Protective cover approx. 75% complete
- 2 Tire chips approx. 60% complete
- 3 For this report ing period 6 turbidity tests were completed; 3/17 = 26, 3/18 = 31, 3/19 = 29.9, 3/20 = 16.3
3/21 = 22.7, 3/22 = 27.2 NTU's - all results were below permit requirement of 39.12 NTU's
- 4 Staff gauge measurements - on 3/20 were; SG-1=2.0, SG-2=2.7, SG-3=2.2, SG-4=1.82
no significant change this report period
- 5 Subbase survey completed
- 6 ADS pipe flow line elevation modification 75% complete
- 7 Box culvert installation 70% complete
- 8 Force main installation 60% complete
- 9 Leachate sump installation initiated
- 10 Geosynthetics progress:

Item	installed - period	to date		total req.	% complete
		secondary	primary		
GCL	60,000	667,462	0	667,462	100%
Geom	39,000	709,000	709,000	1,418,688	100%
Geocom	50,000	680000	680,000	1,359,088	100%

Schedule:

- 1 Day 242 - Remaining 35 days
- 2 Status: Contractor schedule - No changes
Change in Project Completion date, 4/27/08

Contractor Submittals:

Submittals	Period	To Date
1 Total Submitted	0	59
2 Revise & re-submit	0	-
3 Reject	0	-
4 Remaining from Contractor		40

DEP Submittals

- 1 Letter notification of planned liner penetration, 3/05/08 (e-mail followup 3/14/08)
- 2 Wells installed 3/19/08

Change Orders:

No Activity This Period

Cost Summary:

Bid Price	\$7,099,984.50
Additions	\$0.00
Deductions	\$0.00
Total Cost	\$7,099,984.50
Spent to date	\$4,881,431.09 **
Retainage	\$488,143.11
Spent less retainage	\$4,393,287.98
Remaining	\$2,218,553.41
% complete	68.75%

1st pay request re-submitted 10/23/07 - Approved for payment by County	\$666,690.30
2nd pay request submitted 11/13/07 - to County 11/19/07, appr'd 12/05/07	\$488,967.97
3rd pay request submitted 12/7/07 - JE to County 12/17/07, appr'd	\$1,441,411.35
4th pay request submitted 2/8/08 - County approved, 2/19/08	\$1,099,185.34
5th pay request submitted 3/4/08 - JE to County 3/25/08	\$697,033.02
** subject to approval	
total	\$4,393,287.98

Projected Activity Next Progress Period:

- 1 Complete geosynthetics installation
- 2 Continue turbidity & staff gauge measurements
- 3 Continue with tire chips placement
- 4 Continue with force main installation
- 5 Complete protective cover placement
- 6 Continue with Leachate sump installation
- 7 Complete box culvert
- 8 Initiate swale construction

Attachments:

Turbidity Test Results Graphic
Staff Gauge Results Graphic

PROJECT MANAGER REPORT # 32 - 3/24/08 thru 3/30/08

Activities Completed This Report Period:

- 1 Protective cover approx. 98% complete
- 2 Tire chips approx. 67% complete
- 3 For this report ing period 6 turbidity tests were completed; 3/24 = 19.9, 3/25 = 24.7, 3/26 = 24.2, 3/27 = 15.6
3/28 = 15.4, 3/29 = 15.0 NTU's - all results were below permit requirement of 39.12 NTU's
- 4 Staff gauge measurements - on 3/27 were; SG-1=1.8, SG-2=2.64, SG-3=2.4, SG-4=1.7
no significant change this report period
- 5 Subbase survey completed
- 6 ADS pipe flow line elevation modification complete except for headwalls
- 7 Box culvert installation complete except for headwalls
- 8 Force main installation 90% complete
- 9 Leachate sump installation three 24 inch risers installed
- 10 Geosynthetics liner installation complete.

Item	installed - period	to date		total req.	% complete
		secondary	primary		
GCL	60,000	667,462	0	667,462	100%
Geom	39,000	709,000	709,000	1,418,688	100%
Geocom	50,000	680000	680,000	1,359,088	100%

Schedule:

- 1 Day 251 - Remaining 44 days
- 2 Status: Contractor schedule - Changed to reflect 20 days extension
Change in Project Completion date, 5/15/08

Contractor Submittals:

	Submittals	Period	To Date
1	Total Submitted	1	61
2	Remaining from Contractor		33

DEP Submittals

- 1 DEP quarterly reports due April 1, 2008

Change Orders:

No Activity This Period

Cost Summary:

Bid Price	\$7,099,984.50
Additions	\$0.00
Deductions	\$0.00
Total Cost	\$7,099,984.50
Spent to date	\$4,881,431.09 **
Retainage	\$488,143.11
Spent less retainage	\$4,393,287.98
Remaining	\$2,218,553.41
% complete	68.75%

1st pay request re-submitted 10/23/07 - Approved for payment by County	\$666,690.30
2nd pay request submitted 11/13/07 - to County 11/19/07, appr'd 12/05/07	\$488,967.97
3rd pay request submitted 12/7/07 - JE to County 12/17/07, appr'd	\$1,441,411.35
4th pay request submitted 2/8/08 - County approved, 2/19/08	\$1,099,185.34
5th pay request submitted 3/4/08 - JE to County 3/25/08	\$697,033.02
** subject to approval	
total	\$4,393,287.98

Projected Activity Next Progress Period:

- 1 Continue with Basin C modification
- 2 Continue turbidity & staff gauge measurements
- 3 Continue with tire chips placement
- 4 Continue with force main installation
- 5 Initiate electrical conduit installation
- 6 Continue with Leachate sump installation - concrete slab
- 7 Complete box culvert headwalls
- 8 Continue work on swale 'B' construction
- 9 Install ADS pipe headwalls
- 10 Install rain tarp

Attachments:

Turbidity Test Results Graphic
Staff Gauge Results Graphic

PROJECT MANAGER REPORT # 33 - 3/31/08 thru 4/6/08

Activities Completed This Report Period:

- 1 Protective cover complete
- 2 Tire chips approx. 67% complete
- 3 For this report ing period 6 turbidity tests were completed; 3/31 = 15.7, 4/1 = 13.5, 4/2 = 14.1, 4/3 = 16.9
4/4 = 22.6, 4/5 = 14.5 NTU's - all results were below permit requirement of 39.12 NTU's
- 4 Staff gauge measurements - on 3/3 were; SG-1=2.0, SG-2=2.7, SG-3=2.2, SG-4=1.82
no significant change this report period
- 5 Subbase and pre-construction surveys completed
- 6 ADS pipe flow line elevation completed
- 7 Box culvert installation completed
- 8 Force main installation 98% complete
- 9 Leachate sump installation initiated
- 10 Geosynthetics liners and rain tarp completed progress:

Item	installed - period	to date		total req.	% complete
		secondary	primary		
GCL	60,000	667,462	0	667,462	100%
Geom	39,000	709,000	709,000	1,418,688	100%
Geocom	50,000	680000	680,000	1,359,088	100%

Schedule:

- 1 Day 258 - Remaining 37 days
- 2 Status: Contractor schedule - Reflects 20 days extension
Change in Project Completion date, 5/15/08

Contractor Submittals:

	Submittals	Period	To Date
1	Total Submitted	1	62
2	Remaining from Contractor		32

DEP Submittals

- 1 DEP quarterly reports submitted April 1, 2008
- 2 SEC Piezometers removed and closed

Change Orders:

No Activity This Period

Cost Summary:

Bid Price	\$7,099,984.50
Additions	\$0.00
Deductions	\$0.00
Total Cost	\$7,099,984.50
Spent to date	\$4,881,431.09
Retainage	\$488,143.11
Spent less retainage	\$4,393,287.98
Remaining	\$2,218,553.41
% complete	68.75%

1st pay request re-submitted 10/23/07 - Approved for payment by County	\$666,690.30
2nd pay request submitted 11/13/07 - to County 11/19/07, appr'd 12/05/07	\$488,967.97
3rd pay request submitted 12/7/07 - JE to County 12/17/07, appr'd	\$1,441,411.35
4th pay request submitted 2/8/08 - County approved, 2/19/08	\$1,099,185.34
5th pay request submitted 3/4/08 - County approved 3/31/08	\$697,033.02
total	\$4,393,287.98

Projected Activity Next Progress Period:

- 1 Continue with Basin C modification
- 2 Continue turbidity & staff gauge measurements
- 3 Complete tire chips placement
- 4 Perform force main pressure check
- 5 Complete protective cover placement
- 6 Continue with Leachate sump installation - concrete slab & headwalls
- 7 Complete swale 'B' concrete work
- 8 Continue electrical conduit installation
- 9 Initiate leachate sump piping header

Attachments:

Turbidity Test Results Graphic
Staff Gauge Results Graphic

PROJECT MANAGER REPORT # 34 - 4/7/08 thru 4/13/08

Activities Completed This Report Period:

- 1 Swale B complete
- 2 Tire chips approx. 67% complete
- 3 For this report ing period 6 turbidity tests were completed; 4/7 = 10.9, 4/8 = 18.2, 4/9 = 10.1, 4/10 = 14.6
4/11 = 12.1, 4/12 = 21.9 NTU's - all results were below permit requirement of 39.12 NTU's
- 4 Staff gauge measurements - on 4/9 were; SG-1=1.98, SG-2=2.07, SG-3=2.36, SG-4=1.8
no significant change this report period
- 5 Subbase and pre-construction surveys final stages
- 6 Basin C excavation 75% complete
- 7 3x6 Box culvert installation completed
- 8 Force main installation 98% complete
- 9 Leachate sump installation initiated
- 10 Geosynthetics liners and rain tarp completed

Item	installed - period	to date		total req.	% complete
		secondary	primary		
GCL	60,000	667,462	0	667,462	100%
Geom	39,000	709,000	709,000	1,418,688	100%
Geocom	50,000	680,000	680,000	1,359,088	100%

Schedule:

- 1 Day 265 - Remaining 28 days
- 2 Status: Contractor schedule - Reflects 20 days extension
Change in Project Completion date, 5/15/08

Contractor Submittals:

Submittals	Period	To Date
1 Total Submitted	2	64
2 Remaining from Contractor		30

DEP Submittals

- 1 DEP monthly report submitted April 15, 2008
- 2 SEC Piezometers removed and closed

Change Orders:

No Activity This Period

Cost Summary:

Bid Price	\$7,099,984.50
Additions	\$0.00
Deductions	\$0.00
Total Cost	\$7,099,984.50
Spent to date	\$5,409,784.92
Retainage	\$540,978.49
Spent less retainage	\$4,868,806.43
Remaining	\$1,690,199.58
% complete	76.19%

1st pay request re-submitted 10/23/07 - Approved for payment by County	\$666,690.30
2nd pay request submitted 11/13/07 - to County 11/19/07, appr'd 12/05/07	\$488,967.97
3rd pay request submitted 12/7/07 - JE to County 12/17/07, appr'd	\$1,441,411.35
4th pay request submitted 2/8/08 - County approved, 2/19/08	\$1,099,185.34
5th pay request submitted 3/4/08 - County approved 3/31/08	\$697,033.02
6th pay request submitted 4/7/08 - to County 4/15/08	\$475,518.45
total	\$4,868,806.43

Projected Activity Next Progress Period:

- 1 Continue with Basin C modification
- 2 Begin access road realignment
- 3 Complete tire chips placement
- 4 Perform force main pressure check
- 5 SRA final grading completed
- 6 Continue with Leachate sump installation - concrete slab
- 7 Complete Swale A & drainage ditches
- 8 Continue electrical conduit installation and wiring connections
- 9 Initiate leachate sump piping header
- 10 Punch list generated for action to be completed

Attachments:

Turbidity Test Results Graphic
Staff Gauge Results Graphic

ATTACHMENT B

SHOP DRAWING / SUBMITTAL LOG AND CONTROL SHEET

Project: SF County Landfill Section 9 Capacity Expansion				Owner: Hillsborough County Solid Waste Management Department				Project Manager: Larry Ruiz									
Project No: 08449-030-04 -4309				Contractor: Southeast Environmental Contracting, Inc.				Project Manager: Earl Holmes									
PAGE 1 OF				Engineer: Jones Edmunds & Associates, Inc.				Project Manager: Joseph O'Neill									
Contractor Submittal No.	J/E Submittal No.	Description	Specification Section	CC Type	Originals Copies Received	Originals Date Received	To Reviewer Date	To QA/QC Date	ACTION					Transmitted to Contractor By Date	Number of Copies Returned	Transmitted Via	Remarks
	1	App for Payment Sub of Values	01025		6	7-25-07	JET 7-26-07	7-30-07						NAM 8-02-07	3	UPS Ground	
	1a	Amendment App for Payment Sub of Values	01025											RHD	1	E-Mail	
	1a	Resubmittal	01025		6	8-15-07	JET 8-15-07	8-21-07						NAM 8-22-07	2	UPS Ground	
	2	Surveying	01050		6	7-25-07	JET 7-26-07	7-30-07						NAM 8-02-07	2	UPS Ground	
	2a	Pre-construction Topographic Surveys, soil recovery area	01050		3	10-30-07	JET 10-30-07										
	3	Submittal Log	01200		6	7-25-07	JET 7-26-07	7-30-07						NAM 8-02-07	3	UPS Ground	
	3a	Resubmittal	01200		6	8-17-07	JET 8-17-07										
	4	Construction Schedule	01311		6	7-25-07	JET 7-26-07	7-30-07						NAM 8-02-07	3	UPS Ground	
	4a	Resubmittal	01311		6	8-16-07	JET 8-16-07	8-21-07						NAM 8-22-07	2	UPS Ground	
	5	Health and Safety Plan	01610		6	7-25-07	JET 7-26-07	7-30-07						NAM 8-02-07	3	UPS Ground	
	5a	Resubmittal	01610		6	8-20-07	JET 8-20-07	09-17-07						NAM 9-19-07	2	UPS Ground	
	5b	Resubmittal	01610		6	9-25-07	JET 9-25-07	9-27-07						NAM 9-27-07	2	UPS Ground	
	6	Earthwork (excavation plan)	02222		6	7-25-07	JET 7-26-07	7-30-07						NAM 8-02-07	2	UPS Ground	
	7	Devaltering Plan	02510		6	7-25-07	JET 7-26-07	7-30-07						NAM 8-02-07	3	UPS Ground	
	7a	Resubmittal	02510		6	8-03-07	JET 8-03-07	8-15-07						NAM 8-15-07	3	UPS Ground	
	7b	Resubmittal	02510		6	8-10-07	JET 8-10-07	8-15-07						NAM 8-15-07	2	UPS Ground	
	8	Geocomposite - cut sheet	02773		6	7-25-07	JET 7-26-07	7-30-07						NAM 7-31-07	2	UPS Ground	
	9	GCL	02775		6	7-25-07	JET 7-26-07	7-30-07						NAM 7-31-07	2	UPS Ground	
	10	Geomembrane	02778		6	7-25-07	JET 7-26-07	7-30-07						NAM 7-31-07	2	UPS Ground	
	11	Geosynthetic Rain Tap	02941		6	7-25-07	JET 7-26-07	7-30-07						NAM 8-02-07	2	UPS Ground	
	12	QC Plan	01300		6	8-02-07	JET 8-03-07	8-06-07						NAM 8-10-07	3	UPS Ground	
	12a	Resubmittal	01300		6	8-15-07	JET 8-15-07	8-21-07						NAM 8-22-07	2	UPS Ground	
	13	Leachate Pumps	11300		6	8-21-07	JET 8-21-07	9-10-07						NAM 9-10-07	3	UPS Ground	
	13a	Leachate Pumps	11300		6	10-04-07	JET 10-04-07	10-18-07						NAM 10-19-07	3	UPS Ground	
	14	HDPE Pipe - Product data	02711		6	8-24-07	JET 8-24-07	9-10-07						NAM 9-10-07	3	UPS Ground	
	14a	HDPE Pipe - Product data	02711		6	10-05-07	JET 10-05-07	10-15-07						NAM 10-15-07	3	UPS Ground	
	14b	HDPE Pipe - Product data	02711		6	10-29-07	JET 10-29-07	11-05-07						NAM 11-05-07	2	UPS Ground	
	15	Geocomposite - QC cert. trans test, warrants	02773		6	8-24-07	JET 8-24-07	9-17-07						NAM 9-19-07	3	UPS Ground	
	16	Geosynthetic Rain Tap - QA/QC	02941		6	9-06-07	JET 9-06-07	9-17-07						NAM 9-19-07	3	UPS Ground	
	17	Geocompositi - QC Summary	02773		6	9-07-07	JET 9-07-07	9-17-07						NAM 9-19-07	2	UPS Ground	
	18	GCL Certifications	02775		6	8-28-07	JET 8-28-07	9-17-07						NAM 9-19-07	3	UPS Ground	
	18a	GCL Certifications	02775		6	10-09-07	JET 10-09-07	10-15-07						NAM 10-15-07	3	UPS Ground	
	18b	GCL Certifications	02775		6	11-06-07	JET 11-06-07	11-12-07						NAM 11-13-07	3	UPS Ground	
	19	Earthwork (Proctor, classification test results)	02222		6	9-25-07	JET 9-25-07	9-27-07						NAM 9-27-07	3	UPS Ground	
	19a	Earthwork (Proctor resubmitted)	02222		6	10-09-07	JET 10-09-07	10-15-07						NAM 10-15-07	3	UPS Ground	
	20	Earthwork (Baseline chemical testing)	02222		6	9-25-07	JET 9-25-07	9-27-07						NAM 9-27-07	2	UPS Ground	
	21	Geomembrane (QC certificates)	02778		6	9-25-07	JET 9-25-07	9-27-07						NAM 9-27-07	2	UPS Ground	
	22	Earthwork (Baseline chemical testing)	02222		6	10-04-07	JET 10-15-07	10-15-07						NAM 10-16-07	2	UPS Ground	
	23	Precast Concrete Structures (4XB and 3XB box culvert)	17000		6	10-04-07	JET 10-04-07	10-15-07						NAM 10-15-07	3	UPS Ground	
	23a	Precast Concrete Structures (4XB and 3XB box culvert)	17000		6	10-30-07	JET 10-30-07	11-05-07						NAM 11-05-07	2	UPS Ground	
	24	Geocomposite Certification	02773		6	10-22-07	JET 10-22-07	11-05-07						NAM 02-01-08	3	UPS Ground	
	24a	Geocomposite Certification	02773		6	03-04-08	JET 03-04-08	3-10-08						NAM 3-11-08	2	UPS Ground	
	25	Preconstruction Topo Surveys	01050		6	10-17-07	JET 10-17-07							NAM 11-13-07	2	UPS Ground	
	26	Geomembrane (QC certificates)	02778		6	11-06-07	JET 11-06-07	11-13-07						NAM 11-13-07	2	UPS Ground	
	27	Geomembrane (QC certificates)	02778		6	11-08-07	JET 11-08-07	11-12-07						NAM 11-13-07	2	UPS Ground	
	28	GCL Certifications	02775		6	11-08-07	JET 11-08-07	11-12-07						NAM 11-13-07	3	UPS Ground	
	29	Earthwork (Friction Angle Testing - Sub base soil)	02222		6	11-13-07	JET 11-13-07	11-14-07						NAM 11-15-07	2	UPS Ground	
	30	GCL Certifications	02775		6	11-13-07	JET 11-13-07	11-14-07						NAM 11-15-07	3	UPS Ground	

Done
Not Done

SHOP DRAWING / SUBMITTAL LOG AND CONTROL SHEET

Project: SE County Landfill Section 9 Capacity Expansion				Owner: Hillsborough County Solid Waste Management Department				Project Manager: Larry Ruiz										
Project No: 08449-030-01 - 4300				Contractor: Southeast Environmental Contracting, Inc.				Project Manager: Earl Helms										
AGE 1 - QP				Engineer: Jones Edmunds & Associates, Inc.				Project Manager: Joseph O'Neill										
Contractor Submittal No.	B/A	Submittal No.	Description	Specification Section	CCTV Date	Originals Copies Received	Originals Date Received	To Reviewer Date	To QA/QC Date	ACTION					Transmitted to Contractor By and Date	Number of Copies Returned	Transmitted Via	Remarks
										Furnish as Submitted	Furnish as Noted	Revised and Submit	Rejected	Engineer's review not required				
		31	Geomembrane (QC Certifications)	02778		6	11/13/07	JET 11/13/07	11/14/07		X				NAM 11/15/07	2	UPS Ground	
		32	Road Crushed Concrete	18000		6	11/15/07	JET 11/15/07	11/16/07	X					NAM 11/16/07	2	UPS Ground	
		33	Geotextile cut sheet (for use as access road underlayment and top wrap)	02771		6	11/15/07	JET 11/15/07	11/16/07		X				NAM 11/16/07	2	UPS Ground	
		34	Standby Power Generation	16235		6	11/16/07	JET 11/16/07	11/20/07	X					NAM 11/30/07	2	UPS Ground	
		35	GCL (Leachate Compatibility Test Results)	02773		6	11/19/07	JET 11/19/07	12/11/07			X			NAM 12/14/07	3	UPS Ground	
		36	Geocomposite (Certifications)	02773		6	11/21/07	JET 11/21/07	12/13/07			X			NAM 12/14/07	3	UPS Ground	
		37	Geocomposite (Friction Angle Test Results)	02773		6	11/21/07	JET 11/21/07	11/30/07	X					NAM 11/30/07	2	UPS Ground	
		37a	Geocomposite (Certifications)	02773		6	12/19/07	JET 12/19/07	2/01/08			X			NAM 02/01/08	3	UPS Ground	
		38	GCL (Certifications)	02773		6	11/29/07	JET 11/29/07	11/30/07	X					NAM 11/30/07	2	UPS Ground	
		39	Geomembrane (QC Certifications)	02778		6	11/29/07	JET 11/29/07	11/30/07	X					NAM 11/30/07	2	UPS Ground	
		40	Geocomposite (Certifications)	00333		6	11/29/07	JET 11/29/07										
		41	Geotextile QC Plan (for use as access road underlayment and top wrap)	02771		6	11/20/07	JET 11/20/07	11/30/07			X			NAM 12/05/07	3	UPS Ground	
		41a	Geotextile QC Plan (for use as access road underlayment and top wrap)	02771		6	12/12/07	JET 12/12/07	12/24/07			X			NAM 12/24/07	3	UPS Ground	
		42	Geocomposite (Certifications)	02773		6	12/03/07	JET 12/03/07	12/10/07			X			NAM 12/14/07	3	UPS Ground	
		43	Geocomposite (Certifications)	02773		6	12/07/07	JET 12/07/07	12/13/07			X			NAM 12/14/07	2	UPS Ground	
		44	Earthwork - Proctory	02222		6	12/17/07	JET 12/17/07	01/02/08	X					NAM 01/02/08	2	UPS Ground	
		45	Geocomposite (Certifications)	02773		6	01/08/08	JET 01/08/08	02/04/08			X			NAM 02/04/08	3	UPS Ground	
		46	Earthwork - CQC test results	02222		6	01/16/08	JET 01/16/08	1/31/08			X			NAM 02/01/08	3	UPS Ground	
		46a	Earthwork - CQC Test Results	02222		6	02/14/08	JET 02/14/08	2/15/08	X					NAM 02/18/08	2	UPS Ground	
		47	Precast Concrete Structures - 36" RCP Headwall	17000		6	01/16/08	JET 01/16/08	1/31/08	X					NAM 02/01/08	2	UPS Ground	
		48	36" RCP	17000		6	01/16/08	JET 01/16/08	02/01/08			X			NAM 02/04/08	2	UPS Ground	
		49	Geocomposite - Certs Batch #17	02773		6	01/16/08	JET 01/16/08	02/01/08			X			NAM 02/04/08	3	UPS Ground	
		49a	Geocomposite - Certs Batch #17	02773		6	03/24/08	JET 03/24/08	3/26/08	X					NAM 3/27/08	2	UPS Ground	
		50	Earthwork - CQC test results	02222		6	01/24/08	JET 01/24/08	1/31/08	X					NAM 02/01/08	2	UPS Ground	
		51	Gabions	19000		6	01/24/08	JET 01/24/08	1/31/08	X					NAM 02/01/08	2	UPS Ground	
		52	Earthwork - CQC Test Results	02222		6	02/04/08	JET 02/04/08	2/07/08	X					NAM 02/18/08	2	UPS Ground	
		53	Electric	16102-1		6	02/06/08	JET 02/06/08	2/15/08			X			NAM 02/18/08	2	UPS Ground	
		54	Earthwork - CQC Test Results	02222		6	02/11/08	JET 02/11/08	2/13/08	X					NAM 02/19/08	2	UPS Ground	
		55	Geocomposite (Certifications)	00333		6	02/04/08	JET 02/04/08										
		56	Standby Power Generation (O&M Manuals)	16235		4	03/04/08	JET 03/05/08	3/20/08			X			NAM 03/20/08	1	UPS Ground	Need 2 copies
		57	Standby Power Generation (O&M Manuals)	16235		4	03/04/08	JET 03/05/08	3/20/08			X			NAM 03/20/08	1	UPS Ground	Need 2 copies
07723-16		58	Geocomposite - Certs Batch #17 & #18	02773		6	03/06/08	JET 03/06/08	3/10/08			X			NAM 03/11/08	3	UPS Ground	
		58a	Geocomposite - Certs Batch #17	02773		6	03/20/08	JET 03/20/08	3/26/08	X					NAM 3/27/08	2	UPS Ground	
		58b	Geocomposite - Certs Batch #18	02773		6	3/24/08	JET 03/24/08	3/26/08	X					NAM 3/27/08	2	UPS Ground	
		59	Earthwork - CQC test results	02222		6	03/14/08	JET 03/14/08	3/26/08			X			NAM 3/27/08	3	UPS Ground	
07723-16		60	Earthwork - CQC test results	02222		6	04/01/08	JET 04/01/08										
03300-1		61	Concrete	03300		6	04/01/08	JET 04/01/08										
15300-3		62	Valves	15300		6	04/01/08	JET 04/01/08										
02222-16		63	Earthwork - CQC test results	02222		6	04/02/08	JET 04/02/08										

Done

Not Done

ATTACHMENT C

PROGRESS MEETING #31



Project Progress Meeting No. 31 NOTES

HILLSBOROUGH COUNTY
SE COUNTY LANDFILL SECTION 9 CAPACITY EXPANSION
JEA Project No. 08449-030-01-4300
March 18, 2008 - 9:00 am

ATTENDEES: John Holmes, Dick Davis, Megan Miller, Raymond Graves, Larry Ruiz, Larry Brooks
STATUS: Meeting held at SE County Landfill Engineer's Trailer

Milestone	Date	Contract Days	Days Remaining
NTP:	7/25/07	-	-
Substantial Completion:	3/28/08	237	10
Final Completion:	4/27/08	237	40

1. INTRODUCTIONS

- Attendees all introduced themselves and their function on the Construction project team.
- Attendees all signed in on the Sign In Sheet

2. CONTRACTOR / OPERATIONS WORK ISSUES

- Box culvert is not complete. The concrete wing walls will be formed and poured when the grading and final box culvert adjustments are completed.
- Contractor will maintain roadway clearance during the force main work. Currently the Contractor is backfilling the force main trench and there doesn't seem to be a traffic flow problem. The County asked the Contractor to water the road regularly along the trailer and lay down area where dust can be a problem.
- Leachate plant back on line, all OK.

3. FDEP OR OTHER PERMIT ISSUES

- Submittals this past week
 - Notification of liner penetration that is now scheduled for 3/20 or 3/21.
 - Monthly SW Report – 3/15/08
 - Notification of Basin C Construction to DEP (ERP). JE corresponded with DEP and they intend to make a site visit on Thursday or Friday.
- Upcoming DEP submittal summary
 - Monthly SW Report – due 4/15/08.

- New wells installed during the week of March 17, 2008. Wells are being installed today, 3/18/08.
ERP Quarterly Report – due 4/1/08.

- DEP Notification Summary
 - Weld other than double fusion or extrusion, 2 weeks prior to activity.
 - Non-daylight work, 1 week or 1 day for emergency, prior to activity.
 - Spark testing, 72 hours prior to activity.
 - Archaeological findings, when found.
 - Limestone bedrock or clay, when encountered.
 - Sinkholes, when encountered.
 - Historic artifacts, when found.

4. REQUESTS FOR INFORMATION (RFI)

- No activity this past week.

5. PROPOSED CONTRACT MODIFICATIONS

- No activity this past week.

6. SUBMITTALS / SHOP DRAWING STATUS

- Power generator operation manuals have been reviewed and returned to Contractor for modification.

7. JOB PROGRESS REPORT (past week)

- Construction – Contractor reported they have nearly completed the geosynthetics installation, continued hauling protective cover, placed separation berms and tire chips in Section 9, have completed a fair amount of force main work and added the valve box. The Contractor has also set the secondary leachate pump sump and riser assembly.
- Geosynthetics deployed:
 - GCL
To date – 667k sq. ft., 100%
 - Geomembrane
To date – 1357k sq. ft., 97%
(Sec. – 709k Prim. – 670k)
 - Geocomposite
To date - 1330k sq. ft., 90%
(Sec. – 680km Prim. - 667k)
- CQA – 72 SDT and 62 PDT geomembrane tests have been completed, one failure.
- CQC & CQA compaction testing – completed except for berms.
- Material Deliveries –Gravel and geocomposite (14 rolls)..
- Turbidity testing – 6 measurements the past week, all results O.K.
- Staff gauges measurements – one set of measurements on 3/13, no significant change.

8 PROGRESS PROJECTION REPORT / SCHEDULE

- Construction – The Contractor stated they will continue protective cover, complete geosynthetics, continue the force main work. As soon the cover is complete, they will complete the drainage berm around the outside. Don't have enough of the dark brown material to complete the berms so they will use the clayey sand that they excavated and stockpiled. When the geosynthetics for the primary is complete, they will install the boot for the secondary.
- The Contractor asked JE for the interior berm elevation. JE will provide the information for them
- Geosynthetics construction activity
 - Started 1/25 – work projection is to continue and complete deploying geosynthetics.
- Material Deliveries – Composite.
- Other – 3 week look ahead – 4/1/08
- Schedule update (today: day 237, remaining 40 days).

9. PERIODIC PAYMENT REQUEST

- Pay Request #5 received on 3/4/08 – SEC revising.

10. OTHER CONCERNS AND ISSUES

- New well installation – on target.
- Roll deployment from East side still ongoing.
- Piezometer removal – end of March.
- Clean up debris around the site.
- Smoking – Designated areas: outside anchor trench on south, north and west sides and in office trailer areas. No smoking along the east side near Section 7 and 8.
- The contractor asked whether the rain tarp should be installed on the south perimeter berm, as shown on the drawings. JE will confirm drawing is correct or not.
- The contractor pointed out the ADS pipes have been installed at a location different from what is shown on the drawings to provide access to the Section 7 clean-out. The County agreed to leave it as constructed.

11. SCHEDULE DATE / TIME / PLACE FOR NEXT PROGRESS MEETING

- Next meeting 3/25/08 @ 9:00 A.M.

PROGRESS MEETING #32



Project Progress Meeting No. 32 NOTES

HILLSBOROUGH COUNTY
SE COUNTY LANDFILL SECTION 9 CAPACITY EXPANSION
JEA Project No. 08449-030-01-4300
March 25, 2008 - 9:00 am

ATTENDEES: John Holmes, Dick Davis, Megan Miller, Raymond Graves, Larry Ruiz, Larry Brooks
STATUS: Meeting held at SE County Landfill Engineer's Trailer

Milestone	Date	Contract Days	Days Remaining
NTP:	7/25/07	-	-
Substantial Completion:	4/15/08	244	21
Final Completion:	5/15/08	244	51

1. INTRODUCTIONS

- Attendees all introduced themselves and their function on the Construction project team.
- Attendees all signed in on the Sign In Sheet

2. CONTRACTOR / OPERATIONS WORK ISSUES

- Box culvert is complete.
- Basin C excavation soils stockpiled. The Contractor will stockpile over by the stockpile area.
- The haul road the Contractor is in the process of building will be left in place after Section 9 is complete.
- The Contractor can use some of the County's metal pipes to put into the ditch for the culvert, during the haul road haul road construction.

3. FDEP OR OTHER PERMIT ISSUES

- Submittals this past week
 - DEP visit to Basin C construction site to observe wetlands delineation & silt fencing. No issues.
 - Monitoring Wells TH-69, TH-70, TH-71 installed.
- Upcoming DEP submittal summary
 - Monthly SW Report – due 4/15/08.
 - ERP Quarterly Report – due 4/1/08.
- DEP Notification Summary

- Archaeological findings, when found.
- Limestone bedrock or clay, when encountered.
- Sinkholes, when encountered.
- Historic artifacts, when found.

4. REQUESTS FOR INFORMATION (RFI)

- RFI #12 -- pipe support alternative.

5. PROPOSED CONTRACT MODIFICATIONS

- No activity this past week.

6. SUBMITTALS / SHOP DRAWING STATUS

- No submittals this past week.
- Updated submittals list to SEC for action.

7. JOB PROGRESS REPORT (past week)

- Construction – Contractor reported they have nearly completed the geosynthetics installation, continued hauling protective cover, placed tire chips in the middle cell of Section 9, worked on HDPE piping both inside (leachate collection) and outside (leachate force main) the cell, completed the secondary riser pipe with liner penetration boot installation, began stripping overburden in Basin C and completed silt fencing.
- Geosynthetics deployed:
 - GCL
To date – 667k sq. ft., 100%
 - Geomembrane
To date – 1418k sq. ft., 100%
(Sec. – 709k Prim. – 709k)
 - Geocomposite
To date - 1330k sq. ft., 99%
(Sec. – 680km Prim. - 665k)
- CQA – 72 SDT and 75 PDT geomembrane tests completed, one failed test result.
- CQC & CQA compaction testing – completed except for berms.
- Material Deliveries – Box culvert.
- Turbidity testing – 6 measurements the past week, all results O.K.
- Staff gauges measurements – one set of measurements on 3/20/08, no significant change.

8. PROGRESS PROJECTION REPORT / SCHEDULE

- Construction – The Contractor stated the protective cover and tire chips should be completed this week. They will start work on swales. The primary risers will be set this week, and they will continue the work on the berms and set the box culvert. Work on the force main will be continued once the pumps are set and the ditch and berms are in place. The contractor stated they will probably start the berms and realignment in Basin C later this week. The County pointed out that the disposal of corrugated ADS drainage pipe goes to the landfill and no

tipping fee will be assessed. Next week the contractor will start work on the access roadway, which may impact operations, so it was agreed they would work on one roadway lane at a time, using orange cones to direct traffic. The Section 7 SE corner dissipaters will be done in conjunction with the Swale A drain. The concrete contractor will start this week. The County stated the Generator and ATS (Automatic Transfer Switch) will be located as planned east of the Section 7 electrical switch panel station. SRA grading – ongoing – will be some left over, along with some top soil. County said Contractor can leave it as is – instead of pushing north, push it south, pushing it down the slope. The flatter slope on the south will be easier to maintain for mowing. JE will check the permit to make sure there are no inconsistencies. The rain tarp panels for Section 9 will be sewn together and it will be anchored using sand bags.

- Geosynthetics construction activity
 - Started 1/25 – work completed week of 3/24/08.
- Schedule update (today: day 244, remaining 51 days) 18 calendar days added to the schedule.

9. PERIODIC PAYMENT REQUEST

- Pay Request #5 received on 3/4/08 – JE to County 3/25/08.

10. OTHER CONCERNS AND ISSUES

- Piezometer removal – will be scheduled the first week of April.
- Rain tarp hold down with sand bags as discussed earlier.
- Wash fines from aggregate before placing in leachate trench.
- Clean up debris around the site.
- Smoking – Designated areas: outside anchor trench on south, north and west sides and in office trailer areas. No smoking along the east side near Section 7 and 8.

11. SCHEDULE DATE / TIME / PLACE FOR NEXT PROGRESS MEETING

- Next meeting 4/1/08 @ 9:00 A.M.

PROGRESS MEETING #33



Project Progress Meeting No. 33 NOTES

HILLSBOROUGH COUNTY
SE COUNTY LANDFILL SECTION 9 CAPACITY EXPANSION
JEA Project No. 08449-030-01-4300
April 1, 2008 - 9:00 am

ATTENDEES: John Holmes, Dick Davis, Patty Berry, Raymond Graves, Larry Ruiz, Larry Brooks
STATUS: Meeting held at SE County Landfill Engineer's Trailer

Milestone	Date	Contract Days	Days Remaining
NTP:	7/25/07	-	-
Substantial Completion:	4/15/08	251	14
Final Completion:	5/15/08	251	44

1. INTRODUCTIONS

- Attendees all introduced themselves and their function on the Construction project team.
- Attendees all signed in on the Sign In Sheet

2. CONTRACTOR / OPERATIONS WORK ISSUES

- Basin C excavation soils stockpiled. Contractor has enough to build the berms. While the Contractor is loading, Waste Management (WM) can fill their trucks. WM is not to remove any soil from the stockpile area. The Contractor will not haul to the top. The Contractor will put the top 1 ½ foot of filter sand in with the clay.
- There appear to be plenty of tire chips available to finish the job.
- The Contractor will be hauling to Basin C on the road going to the Treatment Plant. The Contractor will see that it is maintained.

3. FDEP OR OTHER PERMIT ISSUES

- Submittals this past week
 - DEP quarterly reports submitted 4/1/08.
- Upcoming DEP submittal summary
 - Monthly SW Report – due 4/15/08.
- DEP Notification Summary
 - Archaeological findings, when found.
 - Limestone bedrock or clay, when encountered.
 - Sinkholes, when encountered.

- Historic artifacts, when found.
4. REQUESTS FOR INFORMATION (RFI)
 - No activity this past week.
 5. PROPOSED CONTRACT MODIFICATIONS
 - No activity this past week.
 6. SUBMITTALS / SHOP DRAWING STATUS
 - Concrete submittals received this past week and under review.
 - Updated submittals list to SEC.
 7. JOB PROGRESS REPORT (past week)
 - Construction – Contractor reported they have nearly completed the protective cover; bottom section still needs some fine grading, however. They've started on the drainage berms, formed and poured the headwall on the 4x8 box culvert, put in the 3x6 box culvert on the south side, and have done a lot of the ditch grading on the perimeter swale B. They also did quite a bit of work on the sump risers in the south end, except for putting the pumps in the risers.
 - Geosynthetics deployment is completed except for the rain tarp. Rain tarp begins today.
 - CQC – compaction testing on berms – all o.k.
 - CQA compaction testing on berms – all o.k.
 - Material Deliveries – minor things (fittings, etc.).
 - Turbidity testing – 6 measurements the past week, all results O.K.
 - Staff gauges measurements – one set of measurements on 3/27/08, no significant change.
 8. PROGRESS PROJECTION REPORT / SCHEDULE
 - Construction – The Contractor stated they need to get the slab poured over the 3x6 box culvert. They are going to bring the force main over to that area this week. The Contractor wants to look at what the plans show for the conduit at the risers. They might want to look at doing it a little bit different than what the plans show. The protective cover is almost done, except for some grading. The contractor has surveyed the top two-thirds of the protective grading, but has not surveyed it in the bottom section. After the Contractor does the berm for creating the drainage ditches, the ditches around Section 9 will be complete. The Contractor will continue on to drainage swale B, and then go over on the East side of Section 7 to swale A. Concrete will be poured from the end of the 30" ADS pipes to the dissipaters, and in front of the 4x8 box culvert on the west bank. Jones Edmunds stated it looks like it will be an erosive area and agreed with putting concrete up there as an added protection measure. Expansion joint and weep holes will need to be installed in the swale concrete armor. The Contractor will put an expansion joint every 100 feet and place saw cuts every 10 feet. Weep holes, 6 inches diameter with pea gravel, will be placed in the bottom of the swale on 10 foot centers along the length.
 - Leachate pump sumps – concrete slabs to be poured after the 3x6 box culvert headwalls are

poured.

- All electrical conduits in the ditch will be placed under the concrete swale liner. The force main will be slightly up in the concrete floor.
- 3 x 6 box culvert – Contractor still needs to do the headwalls around it.
- Access Roads – The one into the cell is roughed in. It will be covered with gravel. The Contractor is stockpiling gravel for the main access road.
- Generator & ATS – Contractor needs to locate, and will pour that slab as they do the armored swale this week. [After the meeting, the County, JE and the Contractor met in the field to specifically identify where the generator will be located.]
- Electrical – The electrical subcontractor will be in this week to do conduit and set-up the generator slab. They will pull wire after equipment is mounted. Jones Edmunds will schedule one of their electrical people on-site when this happens.
- SRA grading – The Contractor has nearly completed the SRA grading.
- Berms – The Contractor is working on the south and west berms, using dark soil for most of them.
- Geosynthetics construction activity projection
 - Rain tarp installation is under way and should be completed this week.
- Material deliveries – expecting sod and road gravel (crushed concrete).
- Schedule update (today: day 251, remaining 44 days for final completion).
- Jones Edmunds will check on frequency of testing roadway backfill for the Contractor.

9. PERIODIC PAYMENT REQUEST

- Pay Request #5 received on 3/4/08 – JE to County 3/25/08.

10. OTHER CONCERNS AND ISSUES

- Piezometer removal – scheduled the first week of April.
- Rain tarp hold down with sand bags – 50 spacing (or less) – whatever it takes to keep it in place.
- SW side of Basin C minor toe re-alignment – This correction was previously communicated to the Contractor.
- Drainage ditch on east side of road at Basin C – needs rip-rap slope into Basin C inlet.
- Swale armor – expansion joints and weep holes will be put in as per our discussion.
- Clean up debris around the site. Dumpster by the trailers needs to be emptied.
- Pipes – Contractor to get rid of them whenever they are ready.
- Smoking – Designated areas: outside anchor trench on south, north and west sides and in office trailer areas. No smoking along the east side near Section 7 and 8.

11. SCHEDULE DATE / TIME / PLACE FOR NEXT PROGRESS MEETING

- Next meeting 4/8/08 @ 9:00 A.M.

PROGRESS MEETING #34



Project Progress Meeting No. 34 NOTES

HILLSBOROUGH COUNTY
SE COUNTY LANDFILL SECTION 9 CAPACITY EXPANSION
JEA Project No. 08449-030-01-4300
April 8, 2008 - 9:00 am

ATTENDEES: John Holmes, Dick Davis, Megan Miller, Larry Brooks
STATUS: Meeting held at SE County Landfill Engineer's Trailer

Milestone	Date	Contract Days	Days Remaining
NTP:	7/25/07	-	-
Substantial Completion:	4/15/08	258	6
Final Completion:	5/15/08	258	36

1. INTRODUCTIONS

- Attendees all introduced themselves and their function on the Construction project team.
- Attendees all signed in on the Sign In Sheet

2. CONTRACTOR / OPERATIONS WORK ISSUES

- Contractor plans to finish Basin C and the ditch, and de-water Section 9 by pumping the water out through the ditch to Basin C. Contractor will hold off until there is a place to pump to; will get the big pump back for a couple days when the time comes. There is water in the bottom of Basin C. Jones Edmunds stated the water has to be three feet below excavation. The Contractor wants to be shown on the Permit where it is required.[JE later clarified their position and communicated with the Contractor. The three foot free board for excavation is not necessary for Basin C. When Basin C is pumped during construction it must be discharged to the rapid infiltration area, NE of Section 9.]
- There is still an impact on the operations road to the Treatment Plant. The contractor will maintain this roadway, keeping it passable.
- The tire chips will be put in the south segment of Section 9 once the rain water is pumped out. Tire chips area needs to be cleaned up.
- The County and JE talked with DEP about the signage around Basin C. The County and DEP agreed to have 7 signs total (stating not to mow in the littoral zone) instead of signs every 100 feet.

3. FDEP OR OTHER PERMIT ISSUES

- DEP Submittals
 - No activity this past week
 - Upcoming DEP submittal summary
 - Monthly SW Report – due 4/15/08.
 - DEP Notification Summary
 - Archaeological findings, when found.
 - Limestone bedrock or clay, when encountered.
 - Sinkholes, when encountered.
 - Historic artifacts, when found.
4. REQUESTS FOR INFORMATION (RFI)
- No activity this past week.
5. PROPOSED CONTRACT MODIFICATIONS
- No activity this past week.
6. SUBMITTALS / SHOP DRAWING STATUS
- Pre-construction and subbase surveys.
 - Updated submittals list to SEC – Jones Edmunds and SEC working on list.
7. JOB PROGRESS REPORT (past week)
- Construction – Contractor reported they have continued construction in Basin C; all the berms have been moved and are at grade and all compaction completed. The primary overflow, Overflow #2, to the mine cut has been installed. They have partially constructed the spillway from out of the box culvert in to Basin C; waiting on more fabric to finish. Excavation is continuing in Basin C. The Contractor has formed and poured the footers on the 3x6 box culvert; forming the headwalls and is continuing with the Swale B concrete armoring. The electrical conduit is run to the leachate sump area and the force main was backfilled and compaction tested on Saturday. The berms around the cell are complete, except for the northern end from the damage from general maintenance and installation.
 - Piezometers were removed – JE needs a completion report on them.
 - CQC compaction testing on berms – all o.k.
 - CQA compaction testing on berms – all o.k.
 - Material Deliveries – sod and road gravel.
 - Turbidity testing – 6 measurements the past week, all results O.K.
 - Staff gauges measurements – one set of measurements on 4/03/08, no significant change.
8. PROGRESS PROJECTION REPORT / SCHEDULE
- Construction – The Contractor stated excavation is continuing in Basin C. Contractor needs to complete the head walls first on the 3x6 culvert. Contractor will continue working on the 3x6 box culvert ditch. The Contractor needs to restore the berms around the cell and check on some grades and do some fine grading in the ditches. They also need to do a final survey.
 - Leachate sump pumps – concrete slab is to be poured, probably next week.

- Access Roads – Contractor is stockpiling material for the roads. Contractor asked about frequency of compaction testing on the road. [JE checked and communicated with the Contractor that compaction tests will be required at a frequency of one per 200 feet per lift.]
- Generator & ATS – Contractor stated the conduit was run, and will pour that slab this week.
- Electrical – The conduit is in and they still have to pull wire, mount panel and generator; should be done within a week.
- SRA grading is ongoing.
- Geosynthetics construction activity projection
 - Rain tarp – completed.
- Sod will start within the next week working from north to south.
- Material deliveries – sod and road gravel (crushed concrete).
- Schedule update (today: day 258, remaining 36 days for final completion).

9. PERIODIC PAYMENT REQUEST

- Pay Request #5 received on 3/4/08 – County approved 4/3/08.

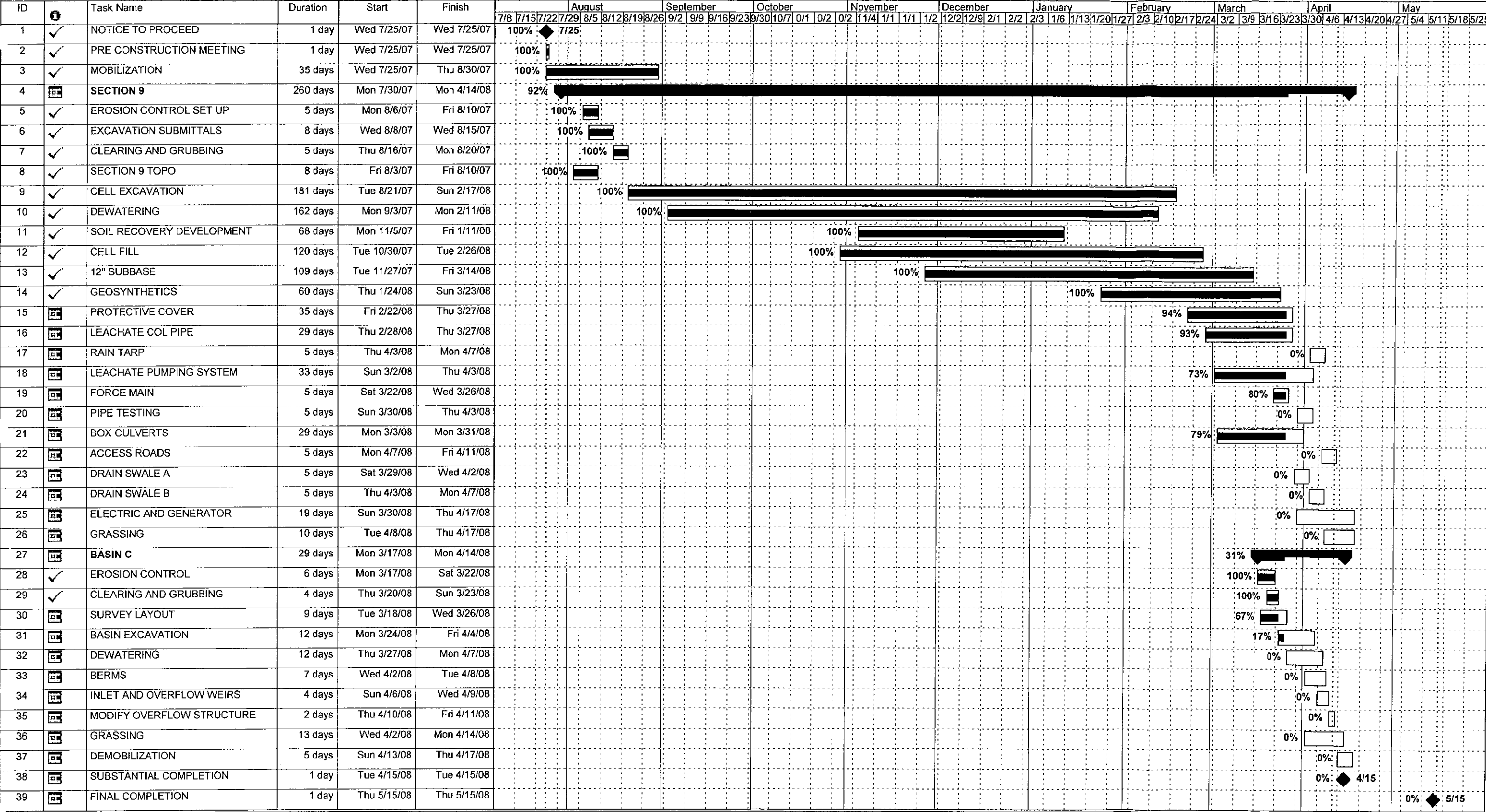
10. OTHER CONCERNS AND ISSUES

- Jones Edmunds would like to get the Electrical Engineer on-site; wants to know a day ahead.
- Punch List – Jones Edmunds & SEC, each prepare one and compare.
- Clean up debris around the site. Dumpster was emptied.
- Grading on the south end of Basin C - the road as it comes out of the bottom – the upper end is very close to the road. The phone line is right there. The Contractor thinks he could slide it to the east a little and eliminate the problem. [JE & the Contractor visited the location and it was agreed the alignment could be altered slightly to miss the buried phone line.]
- Smoking – Designated areas: outside anchor trench on south, north and west sides and in office trailer areas. No smoking along the east side near Section 7 and 8.

11. SCHEDULE DATE / TIME / PLACE FOR NEXT PROGRESS MEETING

- Next meeting 4/15/08 @ 9:00 A.M.

SE COUNTY LANDFILL CAPACITY EXPANSION SECTION 9



ATTACHMENT D



Figure 1 – March 18, 2008 Section 9 Construction Photo – This photo shows the new force main being installed in the trench line.

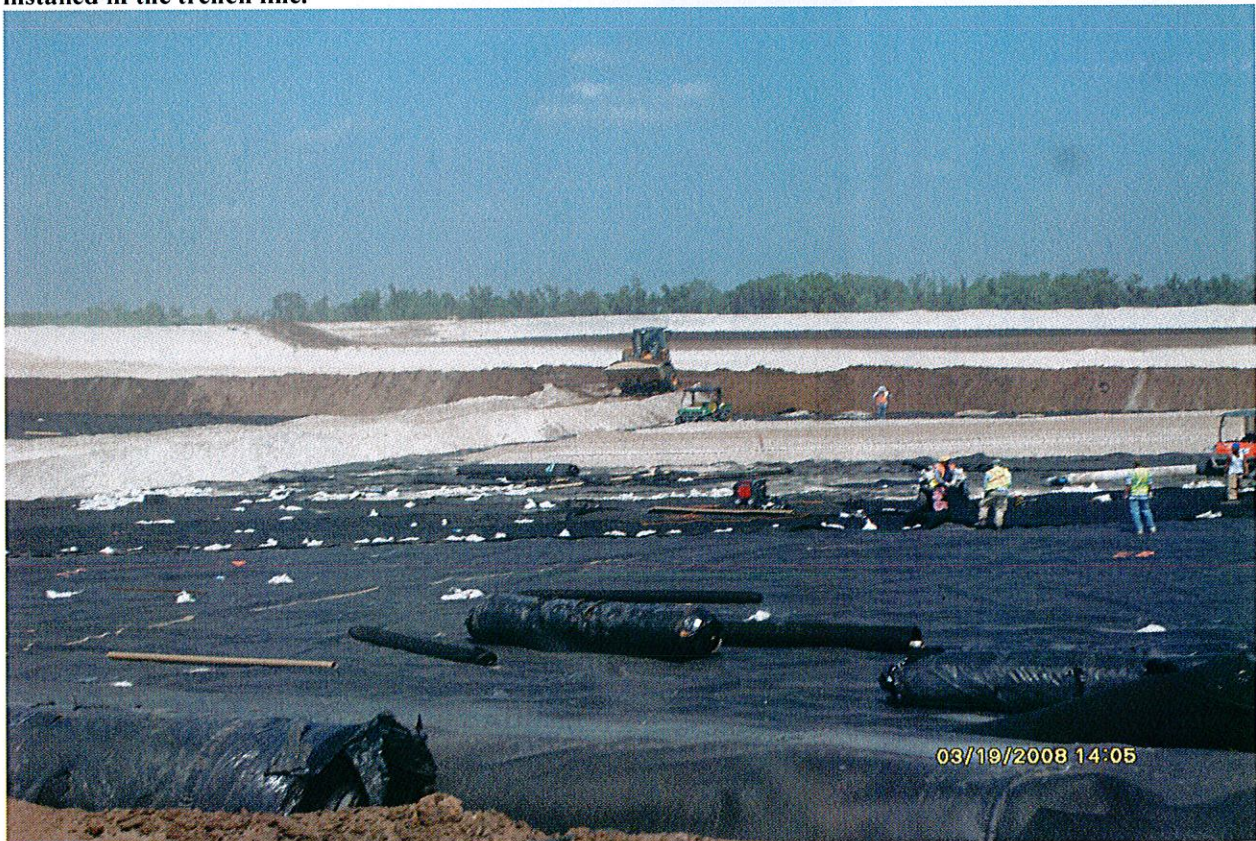


Figure 2 – March 19, 2008 Section 9 Construction Photo – This photo shows the primary geocomposite being placed and sewn prior to placing the protective cover.



Figure 3 – March 19, 2008 Section 9 Construction Photo – Completed new monitoring well installation of TH69, TH70, TH71 on the west side of Section 9.



Figure 4 – March 19, 2008 Section 9 Construction Photo – Protective cover is being placed over the leak detection riser.



Figure 5 – March 26, 2008 Section 9 Construction Photo – This picture reflects the forming of winged walls and pouring of footers at Basin C.



Figure 6 – March 26, 2008 Section 9 Construction Photo – The risers are being set in the Section 9 sump.



Figure 7 – March 27, 2008 Section 9 Construction Photo – This picture is of the rocking and wrapping of the leachate collection line.



Figure 8 – April 3, 2008 Section 9 Construction Photo –This photo shows Basin C modification construction.



Figure 9 – March 31, 2008 Section 9 Construction Photo – This picture shows the trench line for the new armored swale.



Figure 10 – April 1, 2008 Section 9 Construction Photo – This picture reflects the ADS pipe flow headwall being completed.