

Prepared for:



Omni Waste of Osceola County, LLC
1501 Omni Way
St. Cloud, Florida 34773

RESPONSE TO FIRST REQUEST FOR ADDITIONAL INFORMATION

**RENEWAL PERMIT APPLICATION TO OPERATE
PHASES 1 THROUGH 4 OF THE J.E.D. SOLID WASTE
MANAGEMENT FACILITY**

Prepared by:

Geosyntec 

consultants

13101 Telecom Drive, Suite 120
Temple Terrace, Florida 33637

Project Number FL1962

RECEIVED

FEB 10 2012

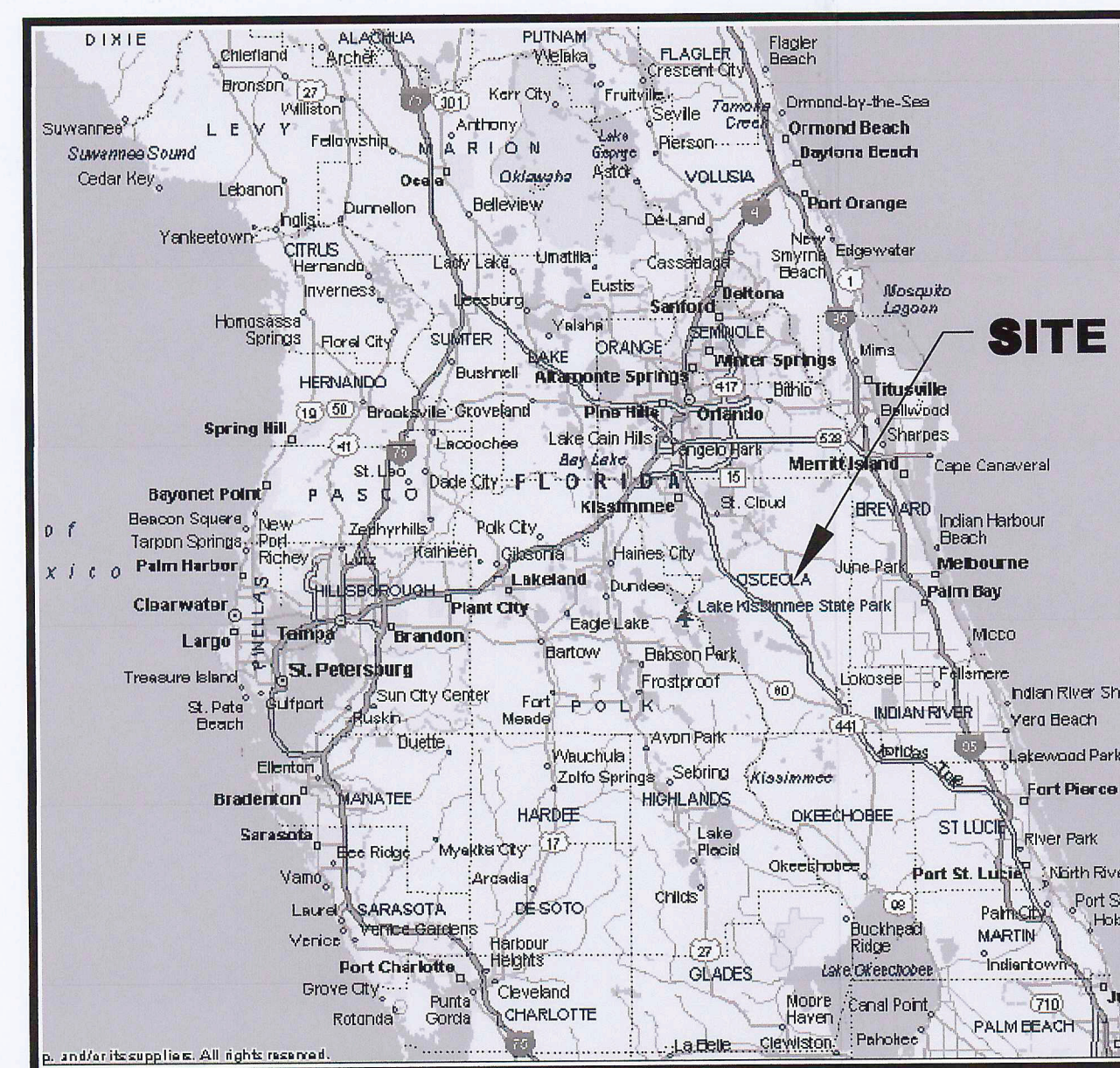
DEP Central Dist.

February 2012

ATTACHMENT 3

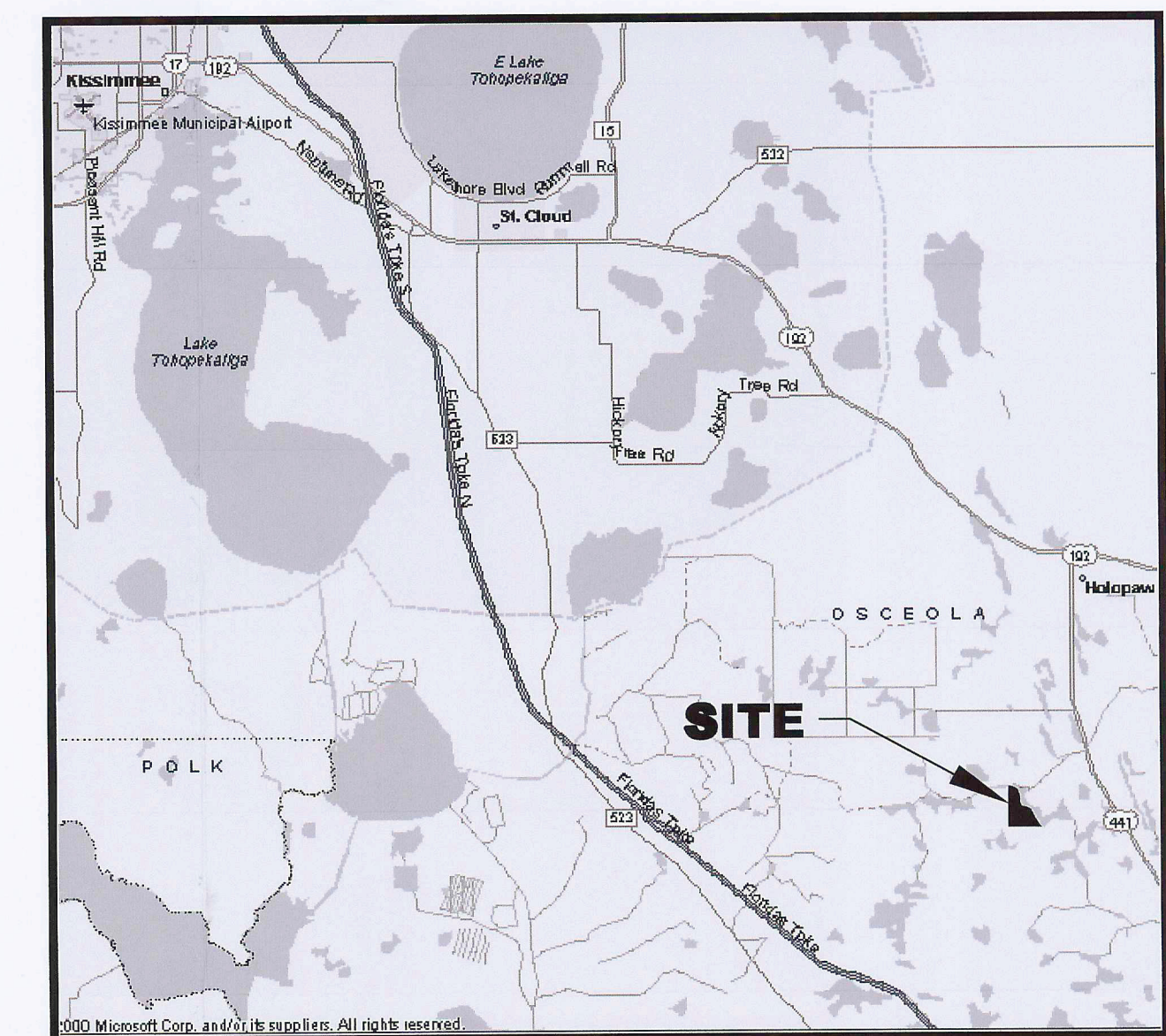
Revised Sheets of Lateral Expansion Permit Drawings

J.E.D. SOLID WASTE MANAGEMENT FACILITY
ST.CLOUD, FLORIDA
PHASES 1 THROUGH 4
RENEWAL PERMIT DRAWINGS
NOVEMBER 2011
(REVISED, JANUARY 2012)



LOCATION MAP

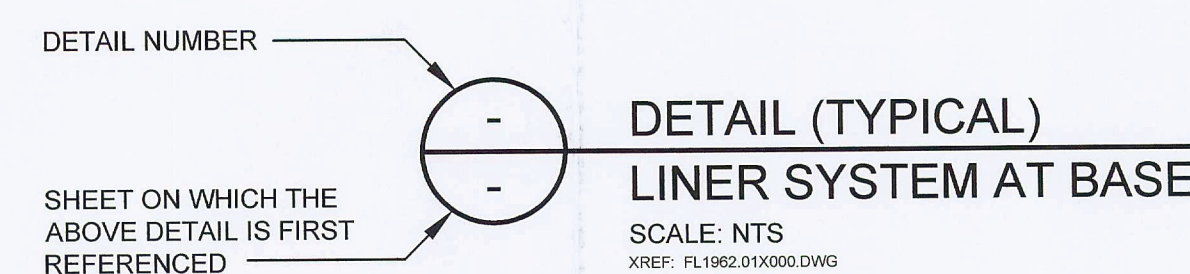
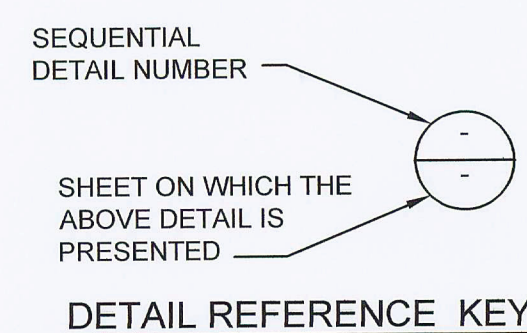
0 32
SCALE: 1" = 32 MILES



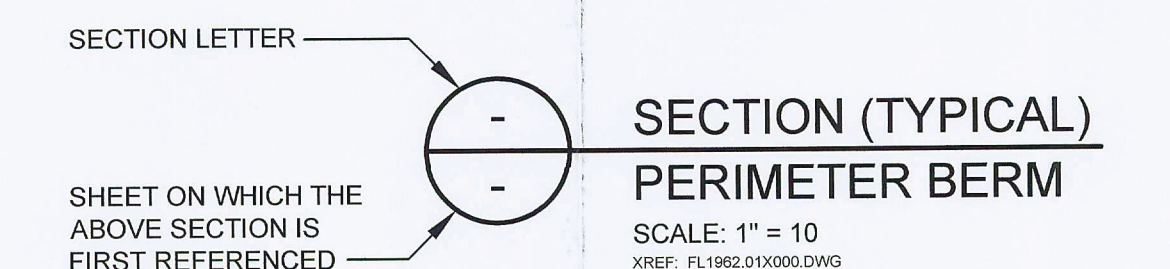
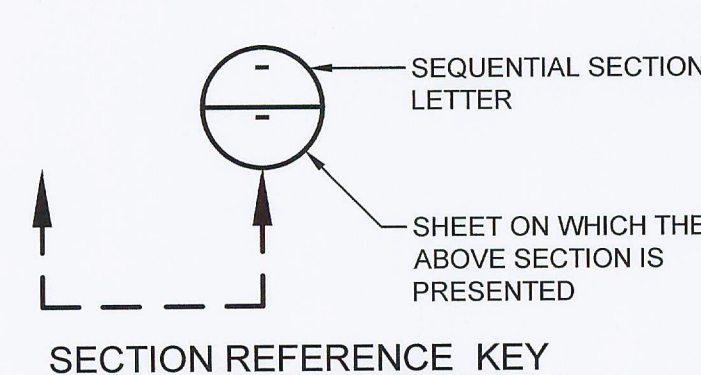
VICINITY MAP

0 4
SCALE: 1" = 4 MILES

LIST OF DRAWINGS		
SHEET NUMBER	SHEET TITLE	REVISION
1	TITLE SHEET	1
2	EXISTING SITE CONDITIONS AND AERIAL PHOTOGRAPH	0
3	TOPOGRAPHIC MAP OF THE SITE	0
4	SITE CHARACTERIZATION PLAN I	0
5	SITE CHARACTERIZATION PLAN II	0
6	SITE DEVELOPMENT PLAN	0
7	BASE GRADING PLAN - PHASE 3	0
8	BASE GRADING PLAN - PHASE 4	0
9	LEACHATE COLLECTION SYSTEM LAYOUT PLAN I	0
10	LEACHATE COLLECTION SYSTEM LAYOUT PLAN II	1
11	LANDFILL CROSS SECTIONS I	0
12	LANDFILL CROSS SECTIONS II	0
13	LANDFILL CROSS SECTIONS III	0
14	PERIMETER BERM TYPICAL SECTIONS	0
15	LINER SYSTEM DETAILS I - CELLS 8 THROUGH 13	0
16	LINER SYSTEM DETAILS II - CELLS 8 THROUGH 13	0
17	LEACHATE SUMP PLAN - CELLS 8 THROUGH 13	0
18	SECONDARY SUMP CROSS SECTIONS - CELLS 8 THROUGH 13	0
19	PRIMARY SUMP CROSS SECTIONS - CELLS 8 THROUGH 13	0
20	LEACHATE SUMP CROSS SECTIONS - CELLS 8 THROUGH 13	0
21	LEACHATE COLLECTION SYSTEM DETAILS - CELLS 8 THROUGH 13	0
22	LEACHATE STORAGE FACILITY PLAN	1
23	LEACHATE STORAGE FACILITY CROSS SECTIONS	1
24	LEACHATE MANAGEMENT SYSTEM SCHEMATIC DIAGRAM	0
25	GROUNDWATER MONITORING NETWORK	0
26	PHASE 3 CONSTRUCTION SEQUENCING	1
27	PHASE 4 CONSTRUCTION SEQUENCING	1
28	WASTE FILL SEQUENCING PLAN I	0
29	WASTE FILL SEQUENCING PLAN II	0
30	GAS MANAGEMENT SYSTEM PLAN I	0
31	GAS MANAGEMENT SYSTEM PLAN II	0
32	CONCEPTUAL LAYOUT OF HORIZONTAL GAS COLLECTORS	0
33	GAS MANAGEMENT DETAILS I	0
34	GAS MANAGEMENT DETAILS II	0
35	GAS MANAGEMENT DETAILS III	0
36	GAS MANAGEMENT DETAILS IV	0
37	LANDFILL GAS PIPELINE DETAILS	0
38	SCALE AND ADMINISTRATIVE AREA LAYOUT	0
39	FINAL COVER SYSTEM GRADING PLAN I	0
40	FINAL COVER SYSTEM GRADING PLAN II	0
41	FINAL COVER SYSTEM DETAILS	0
42	STORM WATER MANAGEMENT PLAN	0
43	STORM WATER MANAGEMENT DETAILS I	0
44	STORM WATER MANAGEMENT DETAILS II	0
45	STORM WATER DRAINAGE STRUCTURE DETAILS	0



EXAMPLE: DETAIL 1 WHICH IS PRESENTED ON
SHEET 7 WAS FIRST REFERENCED ON SHEET 5.



EXAMPLE: SECTION C WHICH IS PRESENTED ON
SHEET 5 WAS FIRST REFERENCED ON SHEET 3.

PERMIT DRAWING

1	JAN 2012	REVISED PER FOEP COMMENTS, RAI #1	JWO	VMD
0	NOV 2011	ISSUED FOR FOEP APPROVAL	JWO	VMD
REV	DATE	DESCRIPTION	DRN	APP

Geosyntec
consultants
13101 TELECOM DRIVE, SUITE 100
TEMPLE TERRACE, FLORIDA 33637 USA
PH: 813.558.0990 - FX 813.558.9726
AUTHORIZATION NUMBER: 4321

WSI
Waste Services, Inc.
1501 OMNI WAY
ST. CLOUD, FLORIDA 34773
TEL: 407-891-3720 FAX: 407-891-3730

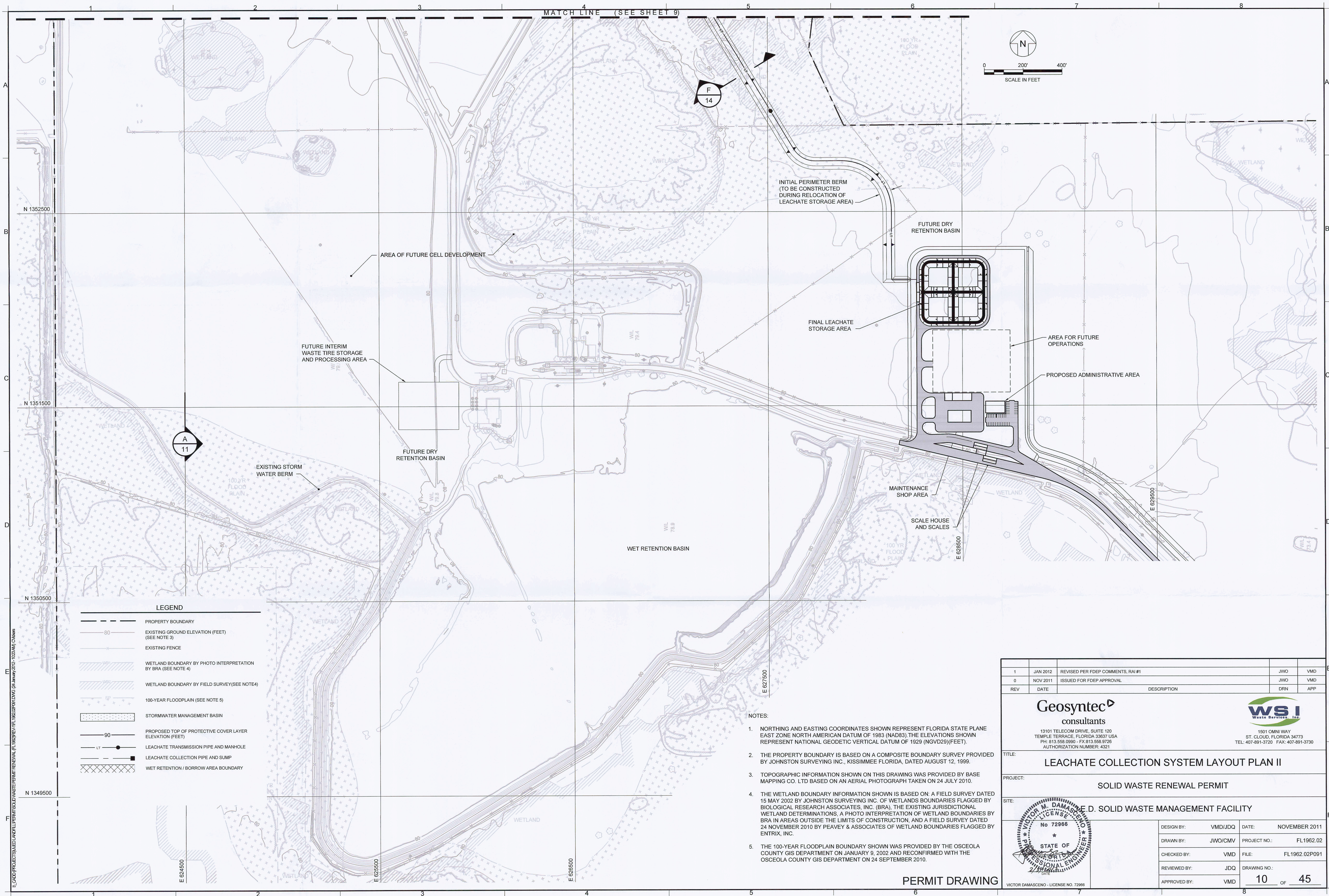
TITLE: **TITLE SHEET**

PROJECT: **SOLID WASTE RENEWAL PERMIT**

SITE: **J.E.D. SOLID WASTE MANAGEMENT FACILITY**

DESIGN BY: VMD/JDQ DATE: NOVEMBER 2011
DRAWN BY: JWO/CMV PROJECT NO.: FL1962.02
CHECKED BY: VMD FILE: FL1962.02P011
REVIEWED BY: JDQ DRAWING NO.:
APPROVED BY: VMD 1 OF 45

VICTOR M. DAMASCENO - LICENSE NO. 72966
STATE OF FLORIDA
PROFESSIONAL ENGINEER



PERMIT DRAWING

1	JAN 2012	REVISED PER FDEP COMMENTS, RAI #1	JWO	VMD
0	NOV 2011	ISSUED FOR FDEP APPROVAL	JWO	VMD
REV	DATE	DESCRIPTION	DRN	APP



13101 TELECOM DRIVE, SUITE 120
 TEMPLE TERRACE, FLORIDA 33637 USA
 PH: 813-558-0990 - FX 813-558-9726
 AUTHORIZATION NUMBER: 4321



1501 OMNI WAY
 ST. CLOUD, FLORIDA 34773
 TEL: 407-891-3720 FAX: 407-891-3730

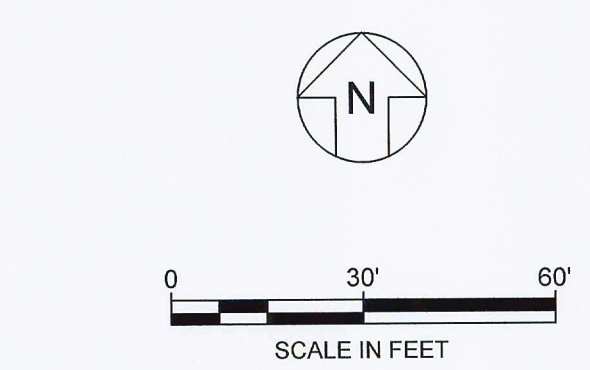
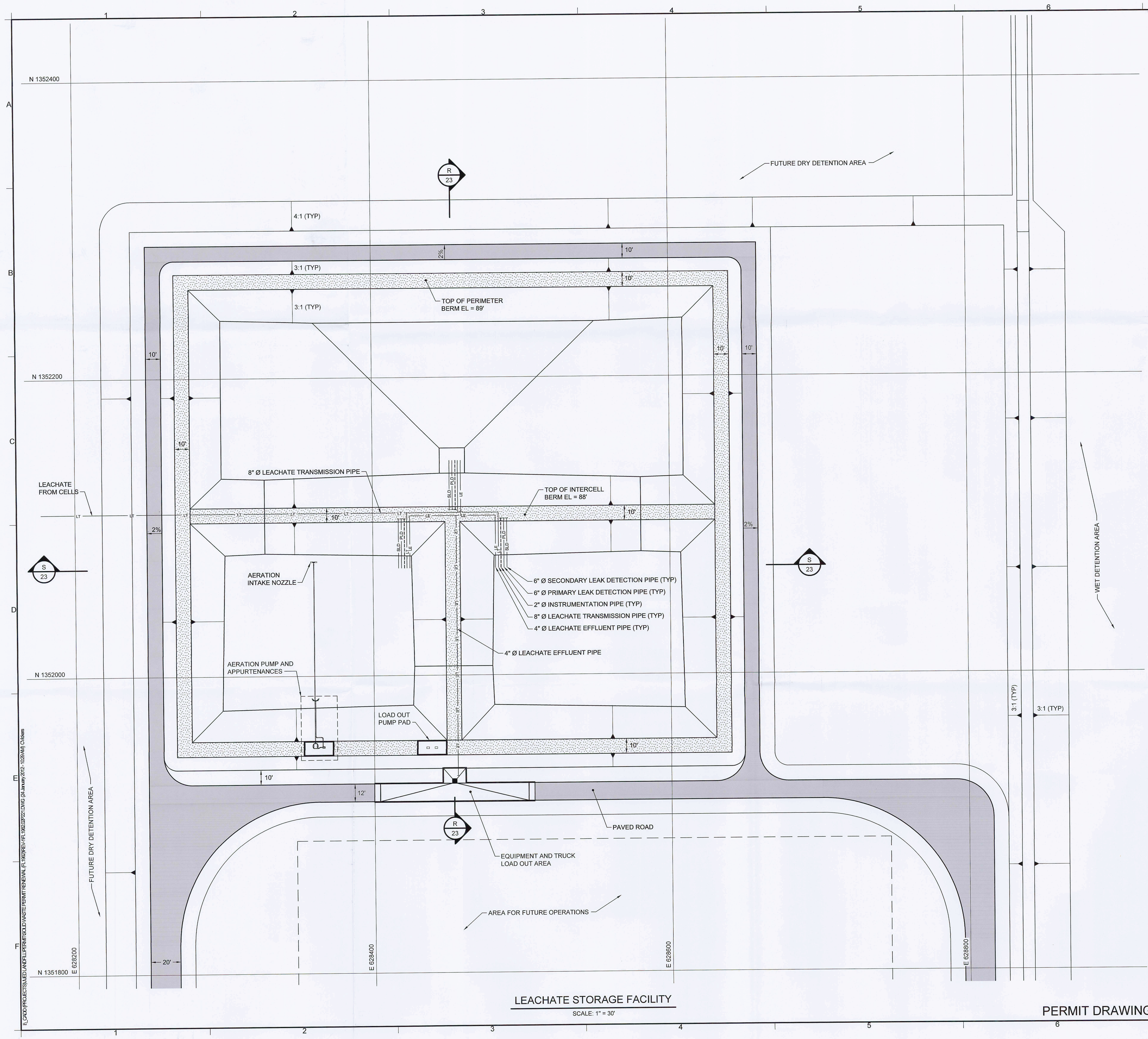
TITLE:	
LEACHATE COLLECTION SYSTEM LAYOUT PLAN II	
PROJECT:	
SOLID WASTE RENEWAL PERMIT	
SITE:	
E. D. SOLID WASTE MANAGEMENT FACILITY	



DESIGN BY:	VMD/JDQ	DATE:	NOVEMBER 2011
DRAWN BY:	JWO/CMV	PROJECT NO.:	FL1962.02
CHECKED BY:	VMD	FILE:	FL1962.02P091
REVIEWED BY:	JDQ	DRAWING NO.:	
APPROVED BY:	VMD	10	OF 45

VICTOR DAMASCENO - LICENSE NO. 72966
 7

8



LEGEND	
LT	LEACHATE TRANSMISSION PIPE
LE	LEACHATE EFFLUENT PIPE
PLD	PRIMARY LEAK DETECTION PIPE
SLD	SECONDARY LEAK DETECTION PIPE
---	INSTRUMENTATION PIPE
[Stippled Pattern]	TOP OF BERM
[Solid Grey Pattern]	PAVED ROAD

1	JAN 2012	REVISED PER FDEP COMMENTS, RAI #1	JWO	VMD
0	NOV 2011	ISSUED FOR FDEP APPROVAL	JWO	VMD
REV	DATE	DESCRIPTION	DRN	APP

Geosyntec
consultants
13101 TELECOM DRIVE, SUITE 120
TEMPLE TERRACE, FLORIDA 33637 USA
PH: 813.558.0990 - FX: 813.558.9726
AUTHORIZATION NUMBER: 4321

WSI
Waste Services, Inc.
1501 OMNI WAY
ST. CLOUD, FLORIDA 34773
TEL: 407-891-3720 FAX: 407-891-3730

TITLE: LEACHATE STORAGE FACILITY PLAN	
PROJECT: SOLID WASTE RENEWAL PERMIT	
SITE: STATE OF FLORIDA D. SOLID WASTE MANAGEMENT FACILITY	

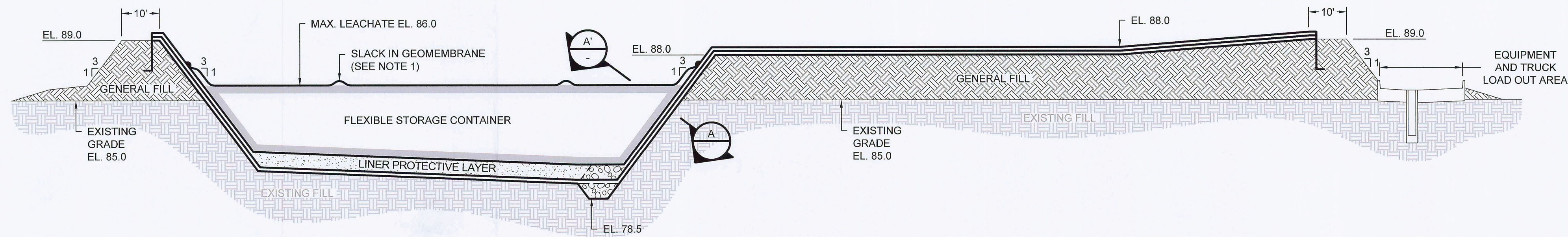
VICTOR M. DAMASCENO
No 72966
STATE OF FLORIDA
CIVIL ENGINEER

DESIGN BY:	VMD/JDQ	DATE:	NOVEMBER 2011
DRAWN BY:	JWO/CMV	PROJECT NO.:	FL1962.02
CHECKED BY:	VMD	FILE:	FL1962.02P221
REVIEWED BY:	JDQ	DRAWING NO.:	
APPROVED BY:	VMD	22	OF 45

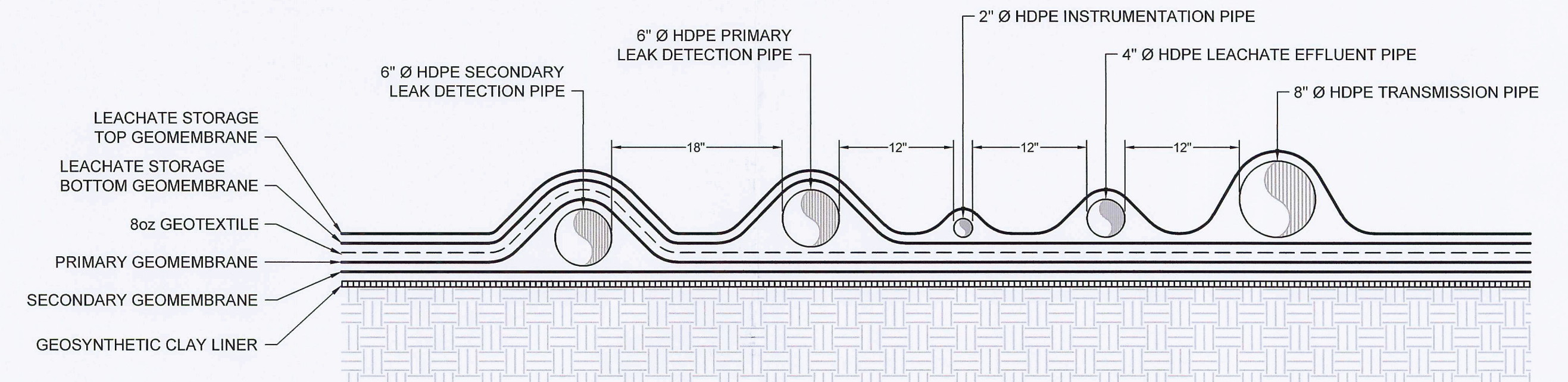
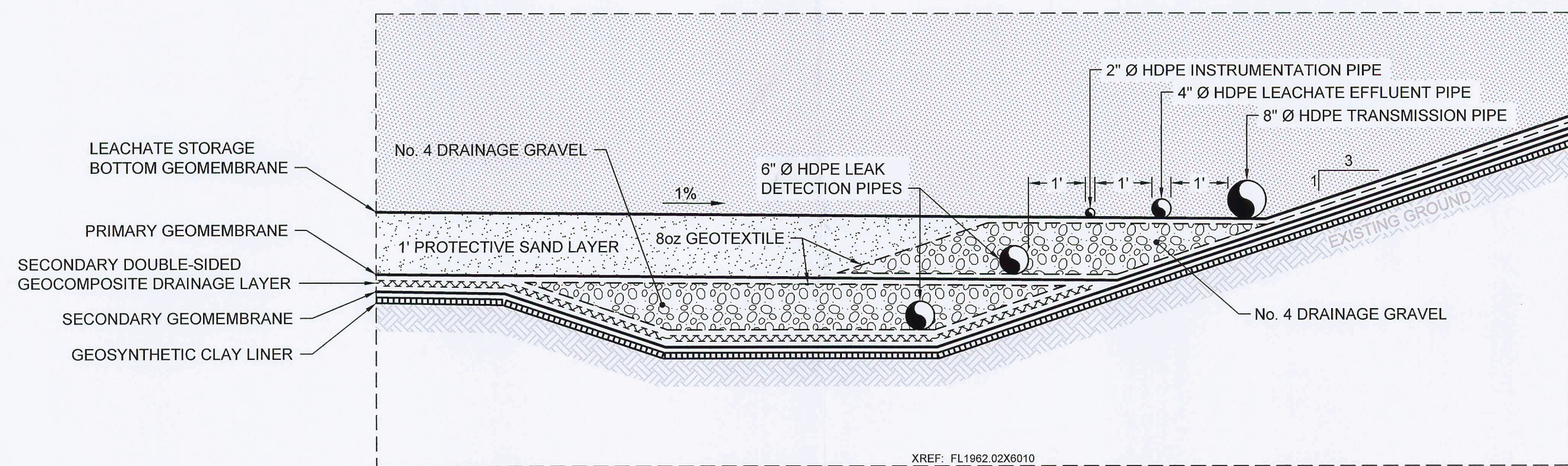
VICTOR DAMASCENO - LICENSE NO. 72966

LEACHATE STORAGE FACILITY
SCALE: 1" = 30'

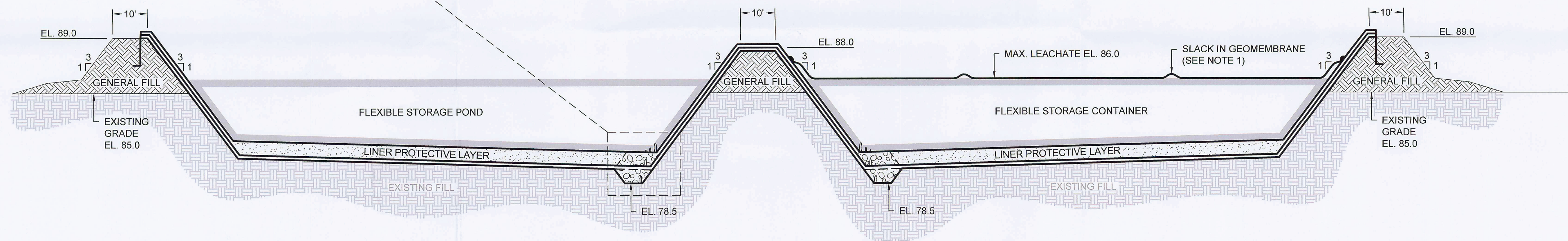
PERMIT DRAWING



S 22 SECTION
LEACHATE STORAGE FACILITY SECTION
SCALE: 1" = 20' H, 1" = 5' V



SECTION A - A'
SCALE: 1" = 1'
XREF: FL1962.02X8011

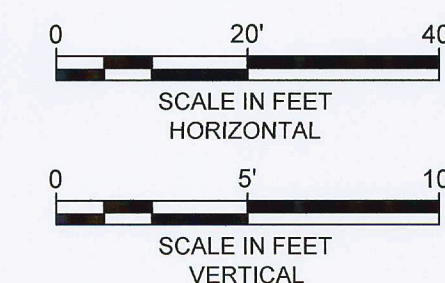


S 22 SECTION
LEACHATE STORAGE FACILITY
SCALE: 1" = 20' H, 1" = 5' V

NOTES:

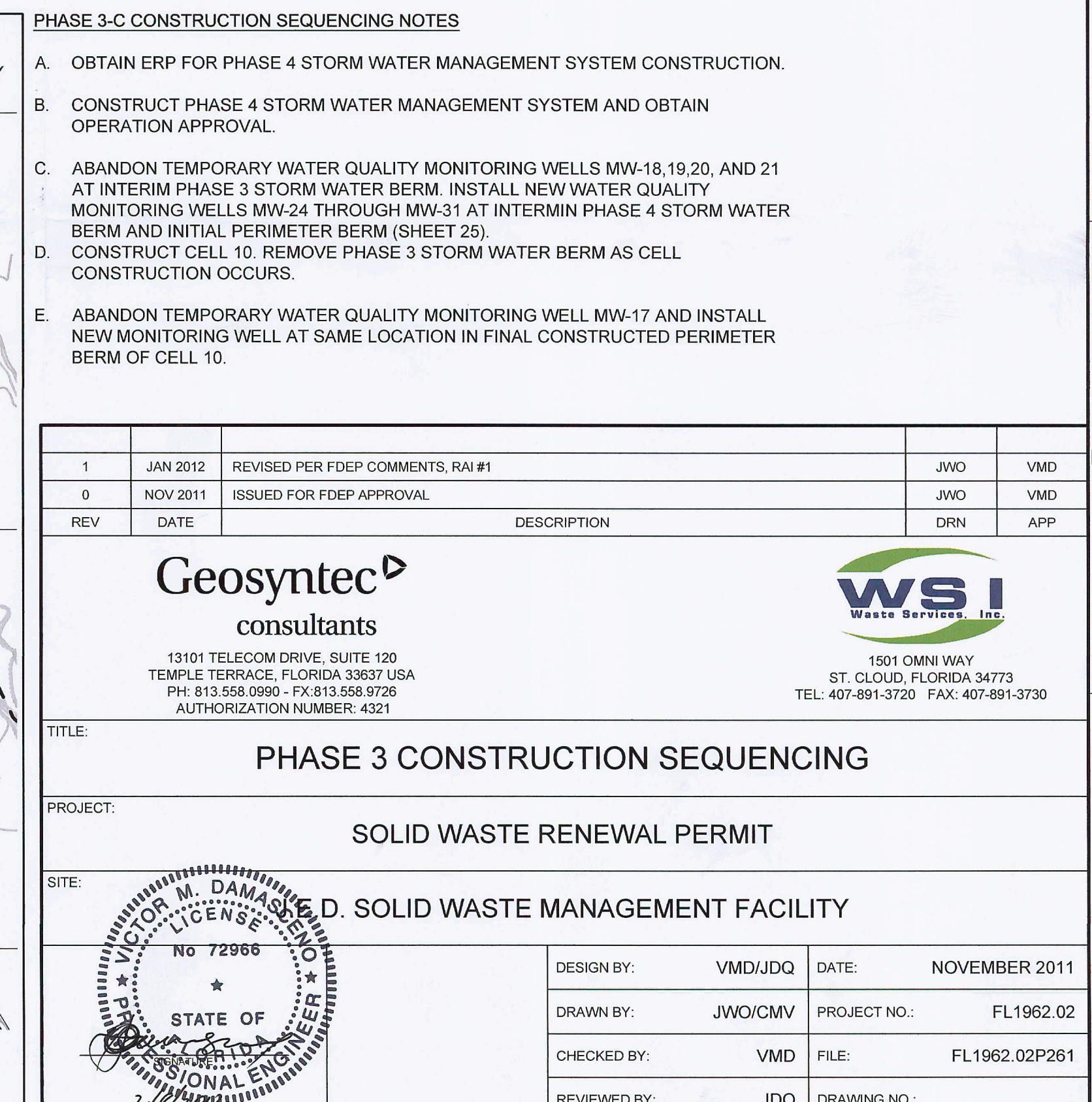
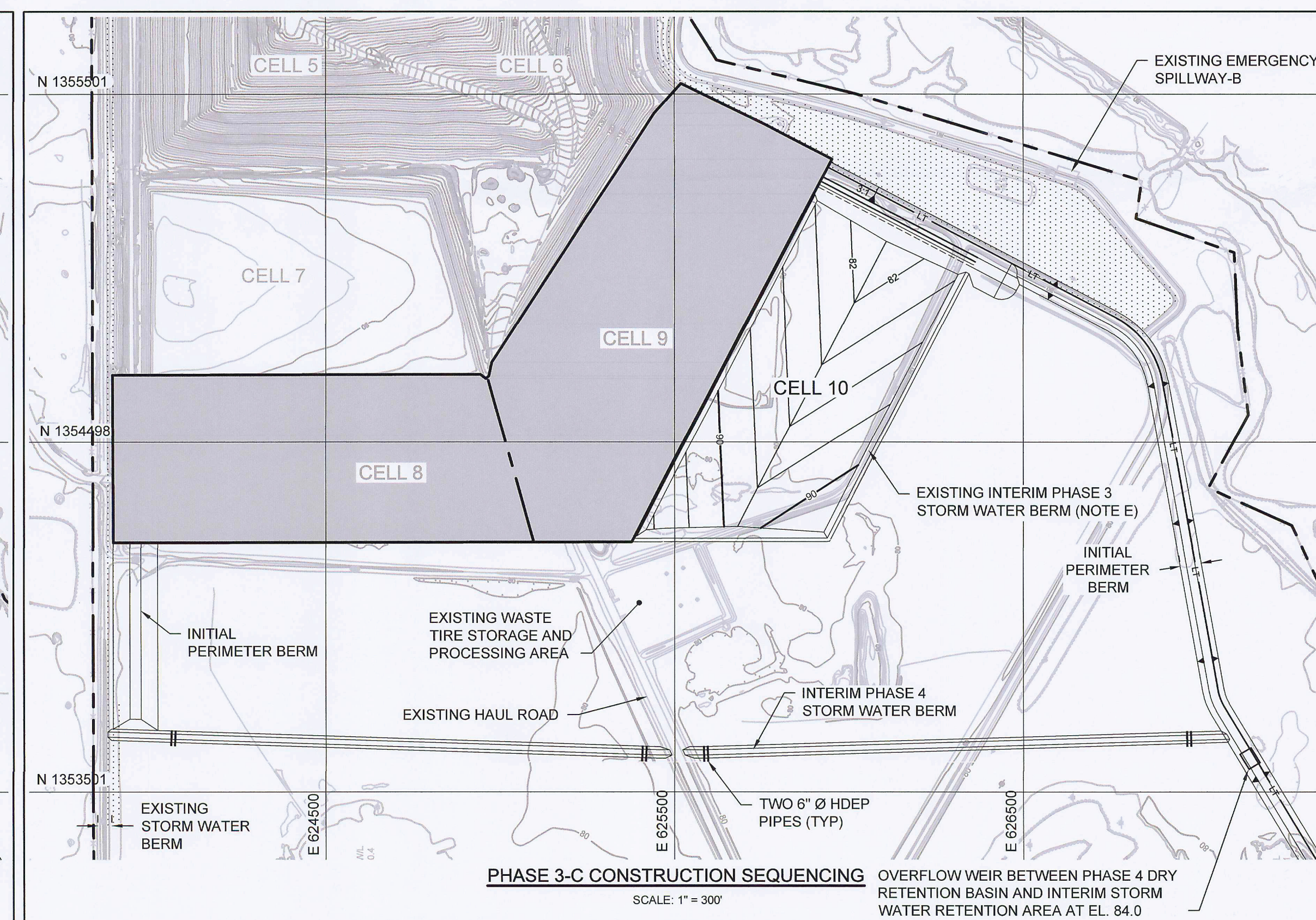
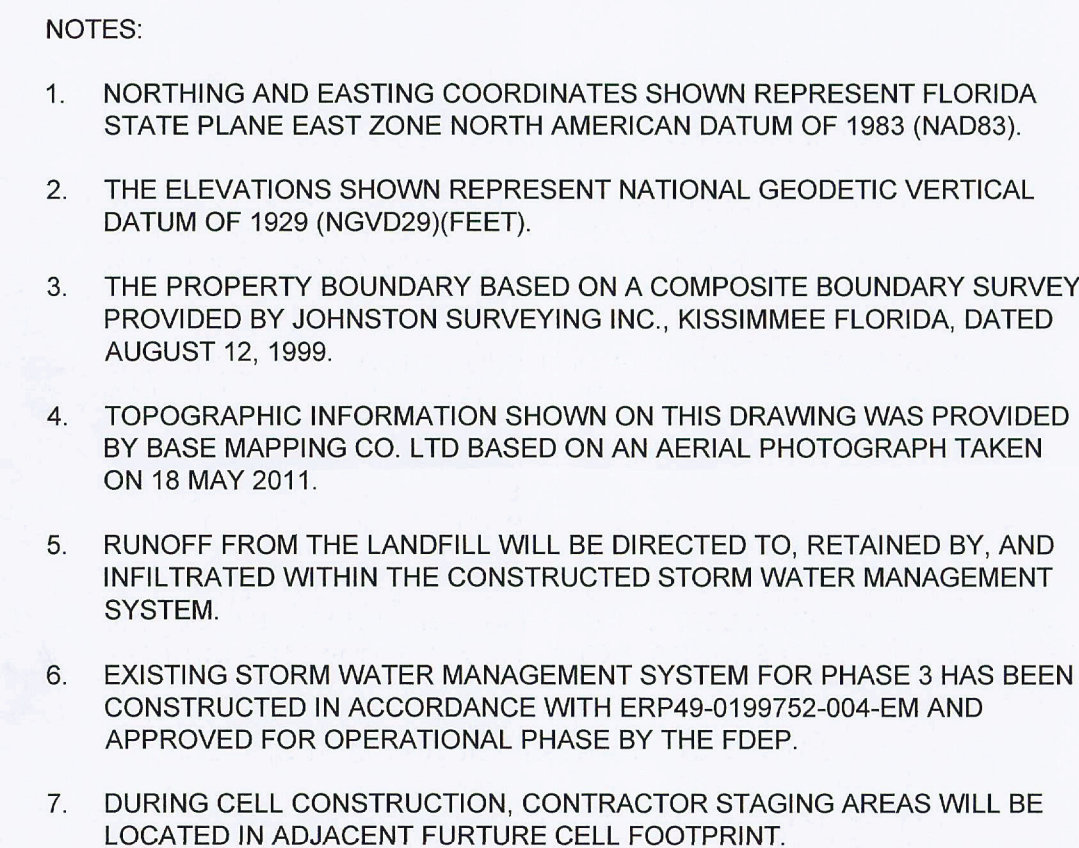
1. TOP GEOMEMBRANE OF FLEXIBLE STORAGE CONTAINER SHALL EQUAL DIMENSIONS OF BOTTOM GEOMEMBRANE SUCH THAT BOTH GEOMEMBRANES LAY FLAT WHEN CONTAINER IS EMPTY.
2. DETAILS ARE SHOWN TO SCALE AS NOTED EXCEPT FOR THE GEOSYNTHETICS WHICH ARE SHOWN AT AN EXAGGERATED SCALE FOR CLARITY.

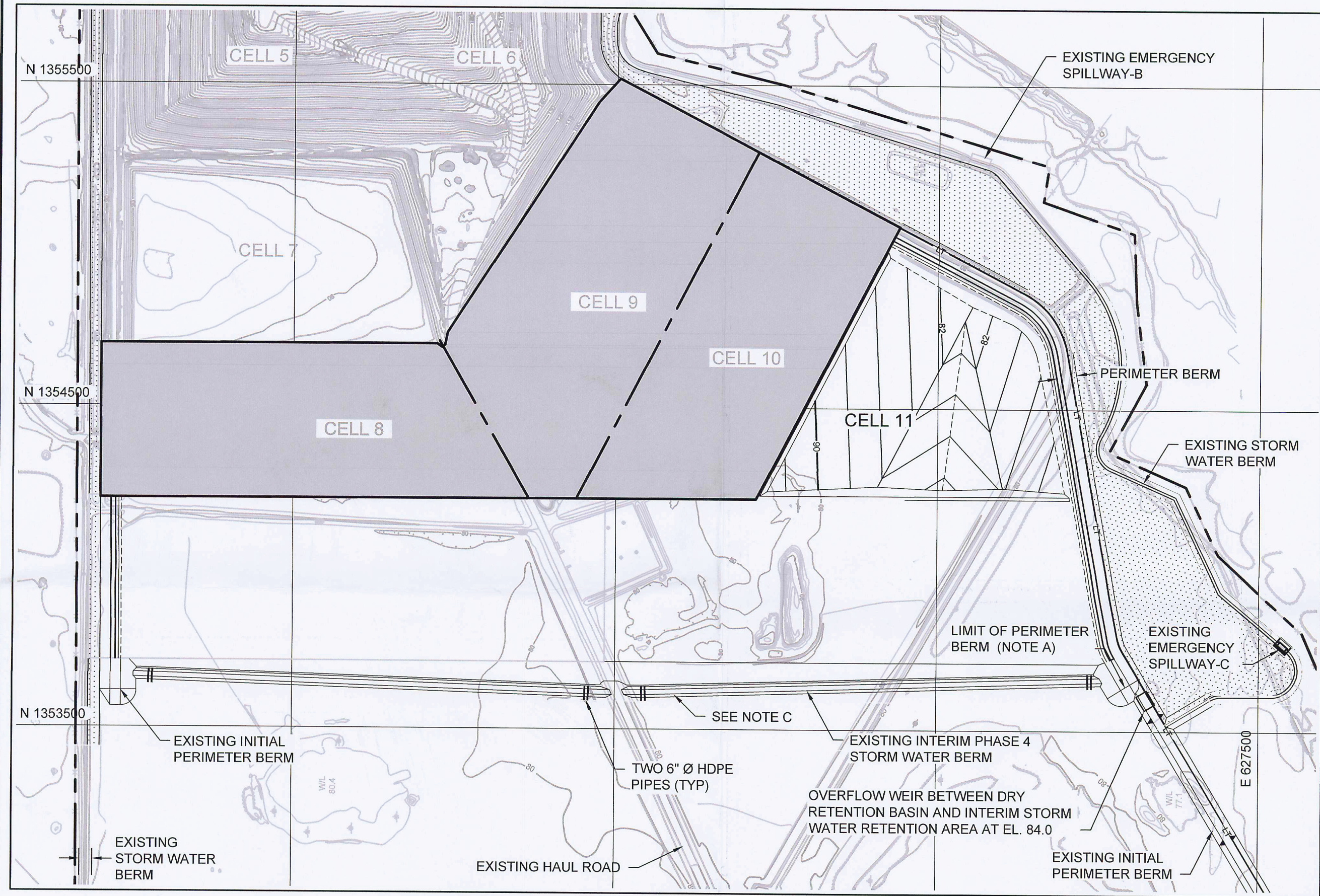
1	JAN 2012	REVISED PER FDEP COMMENTS, RAI #1	JWO	VMD
0	NOV 2011	ISSUED FOR FDEP APPROVAL	JWO	VMD
REV	DATE	DESCRIPTION	DRN	APP
Geosyntec consultants 13101 TELECOM DRIVE, SUITE 120 TEMPLE TERRACE, FLORIDA 33637 USA PH: 813.558.0990 - FX: 813.558.9726 AUTHORIZATION NUMBER: 4321				
WSI Waste Services, Inc. 1501 OMNI WAY ST. CLOUD, FLORIDA 34773 TEL: 407-891-3720 FAX: 407-891-3730				
TITLE: LEACHATE STORAGE FACILITY CROSS SECTIONS				
PROJECT: SOLID WASTE RENEWAL PERMIT				
SITE: E.D. SOLID WASTE MANAGEMENT FACILITY				
			DESIGN BY: VMD/JDQ	DATE: NOVEMBER 2011
			DRAWN BY: JWO/CMV	PROJECT NO.: FL1962.02
			CHECKED BY: VMD	FILE: FL1962.02P231
			REVIEWED BY: JDQ	DRAWING NO.: 23 OF 45
			APPROVED BY: VMD	



PERMIT DRAWING

U:\CDD PROJECTS\LEACHATE STORAGE FACILITY\PERMITS\SOLID WASTE RENEWAL\FL1962.02P231.DWG (8 January 2012 - 10:52 AM) jmdc



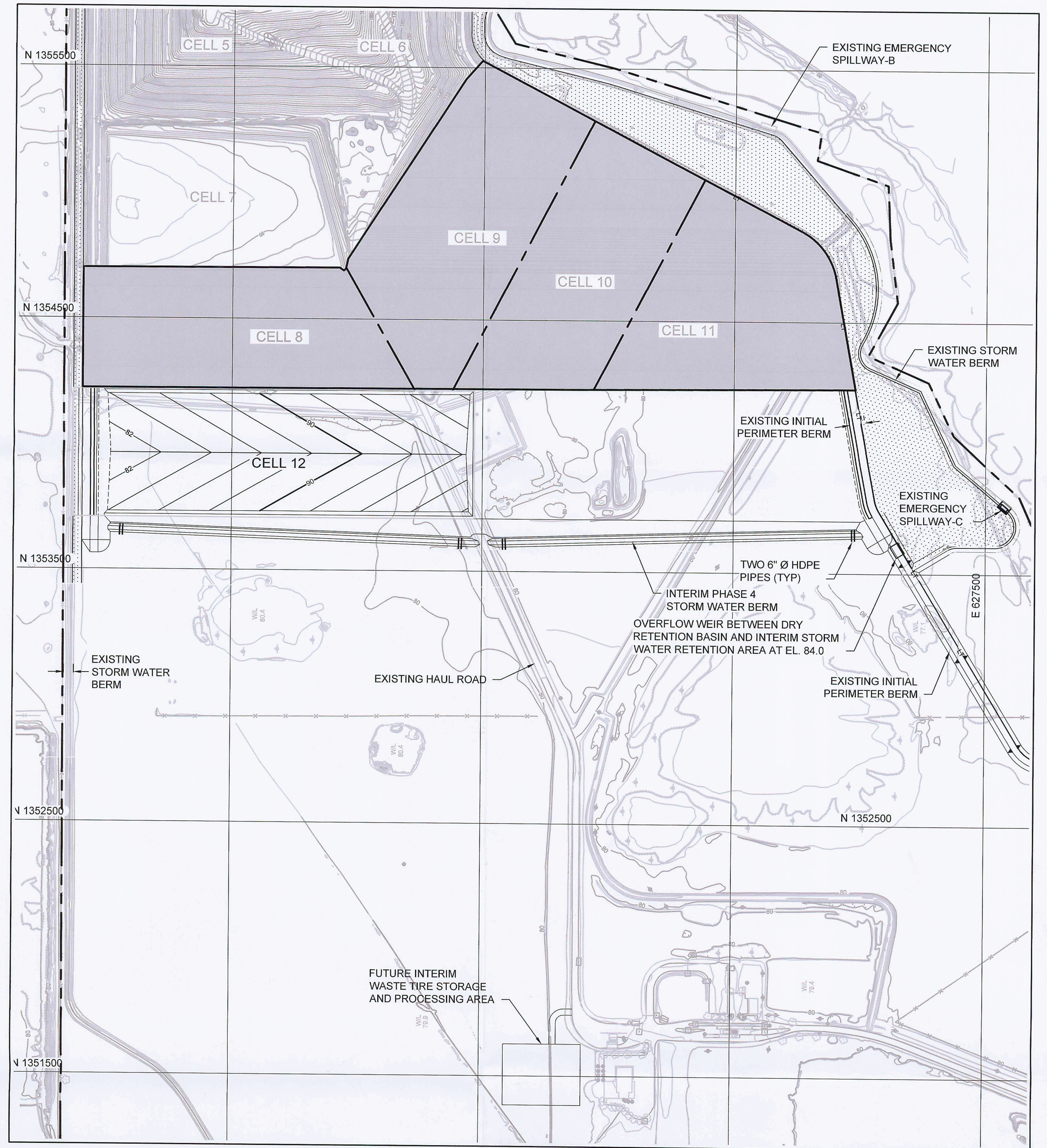


PHASE 4-A CONSTRUCTION SEQUENCING

SCALE: 1" = 300'

PHASE 4-A CONSTRUCTION SEQUENCING NOTES

- EXTEND EXISTING PERIMETER BERM (CREST EL. 96.0) TO 100 FT SOUTH OF LIMITS OF CELL 11 DURING CONSTRUCTION OF CELL 11.
- CONSTRUCT CELL 11.
- ABANDON TEMPORARY WATER QUALITY MONITORING WELLS MW-30 AND 31, AND INSTALL NEW MONITORING WELLS AT SAME LOCATION IN FINAL CONSTRUCTED PERIMETER BERM FOR CELL 11.

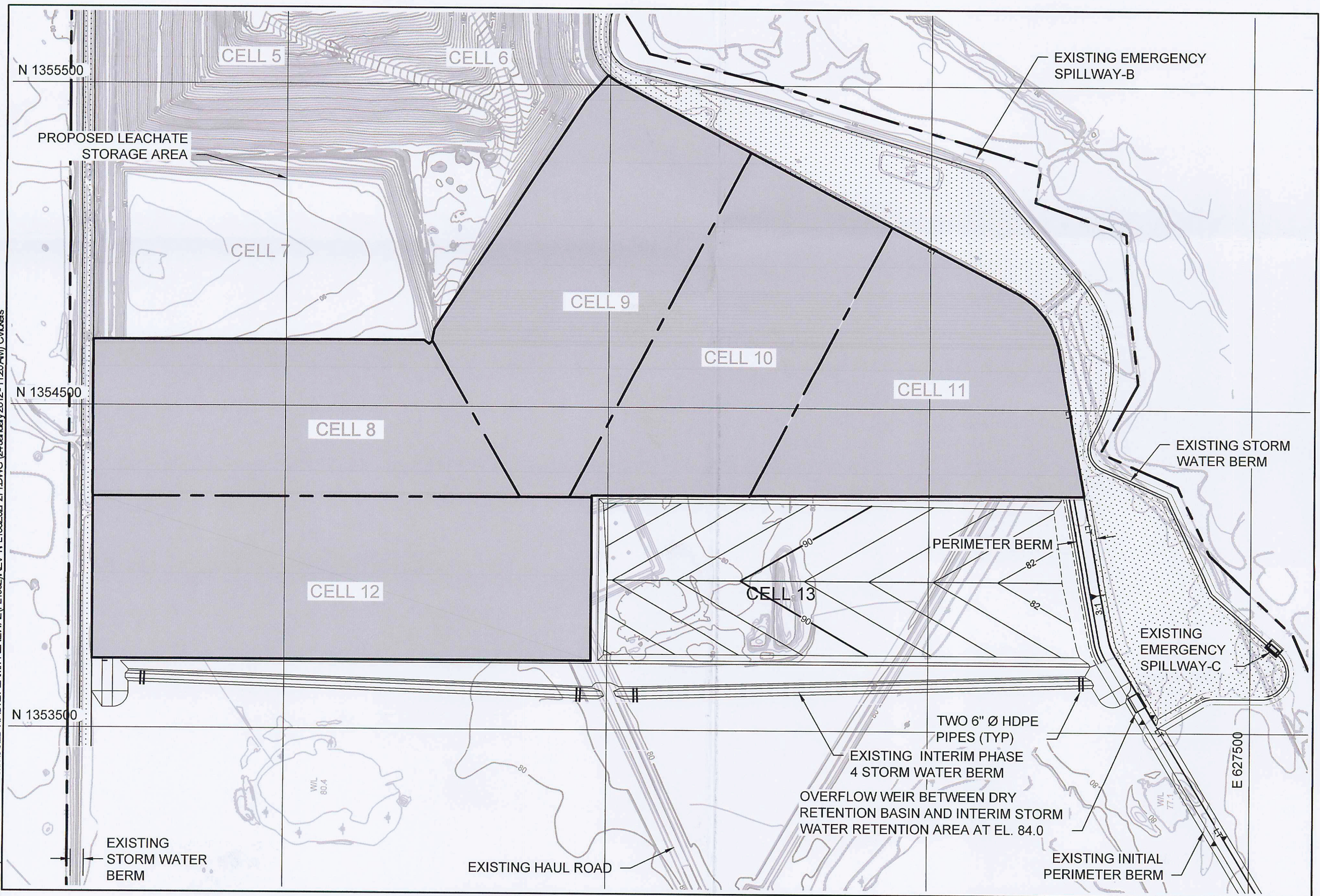


PHASE 4-B CONSTRUCTION SEQUENCING

SCALE: 1" = 300'

PHASE 4-B CONSTRUCTION SEQUENCING NOTES

- RELOCATE WASTE TIRE STORAGE AND PROCESSING AREA PRIOR TO BEGINNING CELL 12 CONSTRUCTION. NEW INTERIM LOCATION TO BE WEST OF THE EXISTING MAINTENANCE SHOP (SHEET 10). SIZE AND DETAILS WILL BE CONSISTENT WITH APPROVED WASTE TIRE STORAGE AND PROCESSING PLAN.
- EXTEND EXISTING PERIMETER BERM TO 100 FT SOUTH OF LIMITS OF CELL 12 DURING CONSTRUCTION OF CELL 12.
- CONSTRUCT CELL 12.

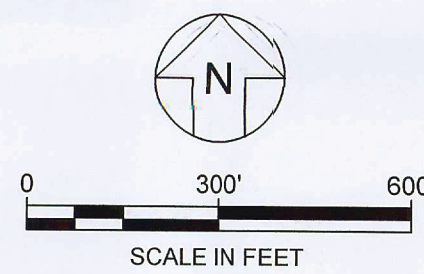


PHASE 4-C CONSTRUCTION SEQUENCING

SCALE: 1" = 300'

PHASE 4-C CONSTRUCTION SEQUENCING NOTES

- EXTEND EXISTING PERIMETER BERM TO 100FT SOUTH OF LIMITS OF CELL 13 DURING CONSTRUCTION OF CELL 13.
- CONSTRUCT CELL 13.



LEGEND

- PROPERTY BOUNDARY
- 80- EXISTING GROUND ELEVATION (FEET) (NOTE 4)
- 90- EXISTING FENCE
- 90- STORM WATER MANAGEMENT BASIN
- PROPOSED SUBBASE ELEVATION (FEET)

NOTES:

- NORTHING AND EASTING COORDINATES SHOWN REPRESENT FLORIDA STATE PLANE EAST ZONE NORTH AMERICAN DATUM OF 1983 (NAD83).
- THE ELEVATIONS SHOWN REPRESENT NATIONAL GEODETIC VERTICAL DATUM OF 1929 (NGVD29)(FEET).
- THE PROPERTY BOUNDARY BASED ON A COMPOSITE BOUNDARY SURVEY PROVIDED BY JOHNSTON SURVEYING INC., KISSIMEE FLORIDA, DATED AUGUST 12, 1999.
- TOPOGRAPHIC INFORMATION SHOWN ON THIS DRAWING WAS PROVIDED BY BASE MAPPING CO. LTD BASED ON AN AERIAL PHOTOGRAPH TAKEN ON 18 MAY 2011.
- RUNOFF FROM THE LANDFILL WILL BE DIRECTED TO, RETAINED BY, AND INFILTRATED WITHIN THE CONSTRUCTED STORM WATER MANAGEMENT SYSTEM.
- DURING CELL CONSTRUCTION, CONTRACTOR STAGING AREAS WILL BE LOCATED IN ADJACENT FUTURE CELL FOOTPRINT.

PERMIT DRAWING

1	JAN 2012	REVISED PER FDEP COMMENTS, RAI #1	JWO	VMD
0	NOV 2011	ISSUED FOR FDEP APPROVAL	JWO	VMD
REV	DATE	DESCRIPTION	DRN	APP

Geosyntec
consultants

13101 TELECOM DRIVE, SUITE 120
TEMPLE TERRACE, FLORIDA 33637 USA
PH: 813.555.0990 - FX: 813.555.9726
AUTHORIZATION NUMBER: 4321

WSI
Waste Services, Inc.

1501 OMNI WAY
ST. CLOUD, FLORIDA 34773
TEL: 407-891-3720 FAX: 407-891-3730

TITLE: **PHASE 4 CONSTRUCTION SEQUENCING**

PROJECT: **SOLID WASTE RENEWAL PERMIT**

SITE: **E.D. SOLID WASTE MANAGEMENT FACILITY**

VICTOR M. DAMASCENO
No 72966
STATE OF FLORIDA
PROFESSIONAL ENGINEER

DESIGN BY:	VMD/JDQ	DATE:	NOVEMBER 2011
DRAWN BY:	JWO/CMV	PROJECT NO.:	FL1962.02
CHECKED BY:	VMD	FILE:	FL1962.02P271
REVIEWED BY:	JDQ	DRAWING NO.:	27 OF 45
APPROVED BY:	VMD		

VICTOR DAMASCENO - LICENSE NO. 72966