

SCS ENGINEERS

TO Florida Department of Environmental Protection
13051 North Telecom Parkway
Temple Terrace, Florida 33637-0926

DATE February 9, 2012

JOB NO. 09199033.21

ATTENTION Steven G. Morgan

Re: Hardee County Class I Landfill

WE ARE SENDING YOU

☒ Attached ☐ Under separate cover via _____

☐ Shop drawings ☐ Prints

☐ Copy of letter ☐ Change Order

☐ The following items: ☐ Plans ☐ Samples

☐ Specifications ☐ _____

Financial Assurance Closure Cost

Estimate Revisions

FEB 15 2012

Southwest District

COPIES	DATE	DESCRIPTION
2	2/9/12	Hardee County Class I Landfill Financial Assurance Closure Cost Estimate Revisions

THESE ARE TRANSMITTED as check below:

- ☒ For approval ☐ Approved as submitted ☐ Resubmit _____ Copies for approval
☐ For your use ☐ Approved as noted ☐ Submit _____ Copies distribution
☐ As requested ☐ Returned for corrections ☐ Return _____ Corrected prints
☐ For review and comment ☐ _____
☐ FOR BIDS DUE _____ 20 _____ ☐ PRINTS RETURNED AFTER LOAN TO US

REMARKS Steve,

Please find enclosed the additional information for the Financial Assurance Closure Cost Estimate. Please let me know if you need any additional information.

Thank You

COPY TO Teresa Carver, Hardee County

SIGNED: Shane R. Fischer, P.E. 

If enclosures are not as noted, kindly notify us at once.



SCS ENGINEERS

February 9, 2012
File No. 09199033.21

Mr. Steven G. Morgan
Florida Department of Environmental Protection
Southwest District Office
13051 North Telecom Parkway
Temple Terrace, Florida 33637-0926

FLORIDA DEPARTMENT OF
ENVIRONMENTAL PROTECTION
FEB 15 2012
SOUTHWEST DISTRICT
TAMPA

Subject: Financial Assurance Closure Cost Estimate Revisions
Hardee County Class I Landfill - Operation Permit No. 38414-011-SO/01
Hardee County, Florida


Dear Mr. Morgan,


Enclosed please find two copies of the Financial Assurance Closure Cost Estimate revisions for the Hardee County Class I Landfill as we discussed on February 7, 2012 and per our email correspondence on February 8, 2012. As indicated in our correspondence the Phase I closure project, and the Certification of Construction Completion recently approved by the Department, was for 13.6 acres of footprint but the actual closure area was 12.31 acres due to the "piggy-back" of future waste from the Phase II Section I area along the south sideslope of the Phase I area. Also, due to the "piggy-back" of the future waste from the Phase II Section I area onto the south sideslope of the Phase I area, that future closure area will be 6.29 acres.

The calculations previously provided by SCS Engineers (SCS) with the Financial Assurance Closure Cost Estimate dated September 1, 2011 were for closing costs based on 6.29 acres remaining to be closed for the Phase II Section I area not 5 acres as indicated on Page 1 of the Closure Cost Estimating Form. Also, based on the above-mentioned information, Page 1 of the Closure Cost Estimating Form has been revised to indicate that the closure area for Phase I is 12.31 acres as opposed to the previously indicated 13.6 acres. Since the previously provided calculations have not been revised just clarified, and the costs have not changed, only Pages 1 and 2 of the Closure Cost Estimating Form and supporting backup are being provided.

Please do not hesitate to contact us if you need anything further.

Sincerely,


Shane R. Fischer, P.E.
Project Manager
SCS ENGINEERS


C. Ed Hilton, P.E.
Vice President
SCS ENGINEERS

Attachments
SRF/CEH:srf

cc: Teresa Carver, Hardee County Solid Waste Director, w/ attachments


58026
2/9/12



Florida Department of Environmental Protection

Bob Martinez Center
2600 Blair Stone Road
Tallahassee, Florida 32399-2400

DEP Form # 62-701.900(23)
Form Title Closure Cost Estimating Form
for Solid Waste Facilities
Effective Date January 6, 2010
Incorporated in Rule 62-701.630(3), F.A.C.

FLORIDA DEPARTMENT OF
ENVIRONMENTAL PROTECTION
FEB 15 2012
SOUTHWEST DISTRICT
TAMPA

CLOSURE COST ESTIMATING FORM FOR SOLID WASTE FACILITIES

Date of DEP Approval: _____

I. GENERAL INFORMATION:

Facility Name: Hardee County Landfill WACS ID: SWD/25/40612
Permit Application or Consent Order No.: 38414-011-SO/01 Expiration Date: 5/12/2013
Facility Address: 685 Airport Road, Wauchula, FL 33873
Permittee or Owner/Operator: Hardee County
Mailing Address: 685 Airport Road, Wauchula, FL 33873

Latitude: 27° 34' 17" N Longitude: 81° 46' 58" W
Coordinate Method: USGS Mapping Datum: NAD 83/90 West Zone of the State Plane
Collected by: Shane Fischer Company/Affiliation: SCS Engineers

Solid Waste Disposal Units Included in Estimate:

Phase / Cell	Acres	Date Unit Began Accepting Waste	Active Life of Unit From Date of Initial Receipt of Waste	If active: Remaining life of unit	If closed: Date last waste received	If closed: Official date of closing
Phase I	<u>43-6 12.31</u>	<u>NA</u>	<u>NA</u>	<u>NA</u>	<u>October 26, 2010</u>	<u>NA 1/3/2012</u>
Phase II Section I	<u>5-0 6.29</u>	<u>May 1, 2008</u>	<u>12/1/2013</u>	<u>30 months</u>	<u>NA</u>	<u>NA</u>

Total disposal unit acreage included in this estimate. Closure: 5-0 6.29 Long-Term Care: 18.6

Facility Type: X Class I Class III C&D Debris Disposal
(Check all that apply) Other

II. TYPE OF FINANCIAL ASSURANCE DOCUMENT (Check Type)

 Letter of Credit * Insurance Certificate X Escrow Account
 Performance Bond * Financial Test Form 28 (FA Deferral)
 Guarantee Bond * Trust Fund Agreement

* - Indicates mechanisms that require the use of a Standby Trust Fund Agreement

Northwest District
160 Governmental Center
Pensacola, FL 32502-5794
850-595-8380

Northeast District
7825 Baymeadows Way, Ste. B200
Jacksonville, FL 32256-7590
904-807-3300

Central District
3319 Maguire Blvd., Ste. 232
Orlando, FL 32803-3767
407-894-7555

Southwest District
13501 N. Telecom Pkwy
Temple Terrace, FL 33637
813-632-7600

South District
2295 Victoria Ave., Ste. 364
Fort Myers, FL 33901-3881
239-332-6975

Southeast District
400 North Congress Ave., Suite 200
West Palm Beach, FL 33401
561-681-6600

Revised 2-9-12

III. ESTIMATE ADJUSTMENT

40 CFR Part 264 Subpart H as adopted by reference in Rule 62-701.630, Florida Administrative Code (F.A.C.) sets forth the method of annual cost estimate adjustment. Cost estimates may be adjusted by using an inflation factor or by recalculating the maximum of closure in current dollars. Select one of the methods of cost estimate adjustment below.

 (a) Inflation Factor Adjustment

 X (b) Recalculated or New Cost Estimates

Inflation adjustment using an inflation factor may only be made when a Department approved closure cost estimate exists and no changes have occurred in the facility operation which would necessitate modification to the closure plan. The inflation factor is derived from the most recent Implicit Price Deflator for Gross National Product published by the U.S. Department of Commerce in its survey Current Business. The inflation factor is the result of dividing the latest published annual Deflator by the Deflator for the previous year. The inflation factor may also be obtained from the Solid Waste website www.dep.state.fl.us/waste/categories/swfr or call the Financial Coordinator at (850)-245-8706.

This adjustment is based on the Department approved closing cost estimate dated: _____

Latest Department Approved Closing Cost Estimate:	x	Current Year Inflation Factor, e.g. 1.02	=	Inflation Adjusted Closing Cost Estimate:
_____		_____		\$0.00

This adjustment is based on the Department approved long-term care cost estimate dated: _____

Latest Department Approved Annual Long-Term Care Cost Estimate:	x	Current Year Inflation Factor, e.g. 1.02	=	Inflation Adjusted Annual Long-Term Care Cost Estimate
_____		_____		\$0.00

Number of Years of Long Term Care Remaining: _____ x _____

Inflation Adjusted Long-Term Care Cost Estimate: _____ = _____ \$0.00

Signature by: _____ Owner/Operator X Engineer (check what applies)


Signature

4041 Park Oaks Blvd., Suite 100
Address

Shane R. Fischer, P.E., Project Manager
Name & Title

Tampa, Florida 33610
City, State, Zip Code

2/9/12
Date

sfischer@scsengineers.com
E-Mail Address

(813) 621-0080
Telephone Number

Revised 2-9-12

Phase I (40 mil liner area)

304,311.84 SF	Top, north and east (areas)
33,812.43 SY	Top, north and east (areas)
43,560 SF/Acre	
6.99 Acres	

Phase I (60 mil liner area)

287,898.23 SF	West and south (areas)
31,988.69 SY	West and south (areas)
43,560 SF/Acre	
6.61 Acres	

592,210.07 Total Phase I Area (SF)

65,801.12 Total Phase I Area (SY)

13.60 Total Phase I Area (Acres)**Phase II Section I (Operations Drawings)**

273,954 SF	West, south, east and top (areas) to pigg-back
30,439 SY	West, south, east and top (areas) to pigg-back
43,560 SF/Acre	

6.29 Acres	West, south, east and top to pigg-back to Close
-------------------	--

Areas In Closure/Longterm Care Estimate

Phase I Area =	13.6 Acres
Phase II Section I Area =	5 Acres
Total Area =	18.6 Acres

Phase I Closed Area = 18.6 acres - 6.29 acres =	12.31 Acres
Phase II Section I Area Remaining for Closure =	6.29 Acres
Total Area for Longterm Care =	18.60 Acres

E:\1980.ctb\Newdoc\19800831\11\CONSTRUCTION\Volumes and Area Estimates for Rollup\A1 No. 1 2-8-17 Revised Closure Code 2-8-17.doc Feb 08 2017 - 11:24am Layout Name: Phase II Section 1 and Phase I by: 24839f

Phase I

Phase II Section I

Phase II Section I area and Phase I area is as follows:

= 810,065.22 SF
= 18.6 Acres

FLORIDA DEPARTMENT OF
ENVIRONMENTAL PROTECTION
FEB 15 2012
SOUTHWEST DISTRICT
TAMPA

SCS ENGINEERS
STEARNS, CONRAD AND SCHMIDT
CONSULTING ENGINEERS

JCS ENGINEERS
STEARNS, CONRAD AND SCHMIDT
CONSULTING ENGINEERS

CONSULTING ENGINEERS
4041 PARK OAKS BLVD., SUITE 100, TAMPA, FL 33610
813 621-0080 FAX 813 623-6757

813 621-0080 FAX 813 623-6757
FLORIDA CERTIFICATE OF AUTHORIZATION NO. 000004

J. NO. 9199033.21	DWN. BY: SDA	O/A F
----------------------	-----------------	-------

BY: SRF	CHK BY: SRF	APP:
---------	-------------	------

CADD FILE:

DATE:

2-8-12

SCALE:

DRAWING NO.

1 of **3**

DRAWING TITLE
PHASE I AND PHASE II SECTION I AREA

TITLE
HARDEE COUNTY LANDFILL

CLIENT

**HARDEE COUNTY
BOARD OF
COUNTY COMMISSIONERS**

138

REV

11

△	△
---	---

△	△
---	---

DESCRIPTION

8Y

SHANE R. FISCHER, P.E.
LICENSE NO. 58026

= 287,898.23 SF
= 31,988.69 SY
= 6.61 Acres

= 304,311.84 SF
= 33,812.43 SY
= 6.99 Acres

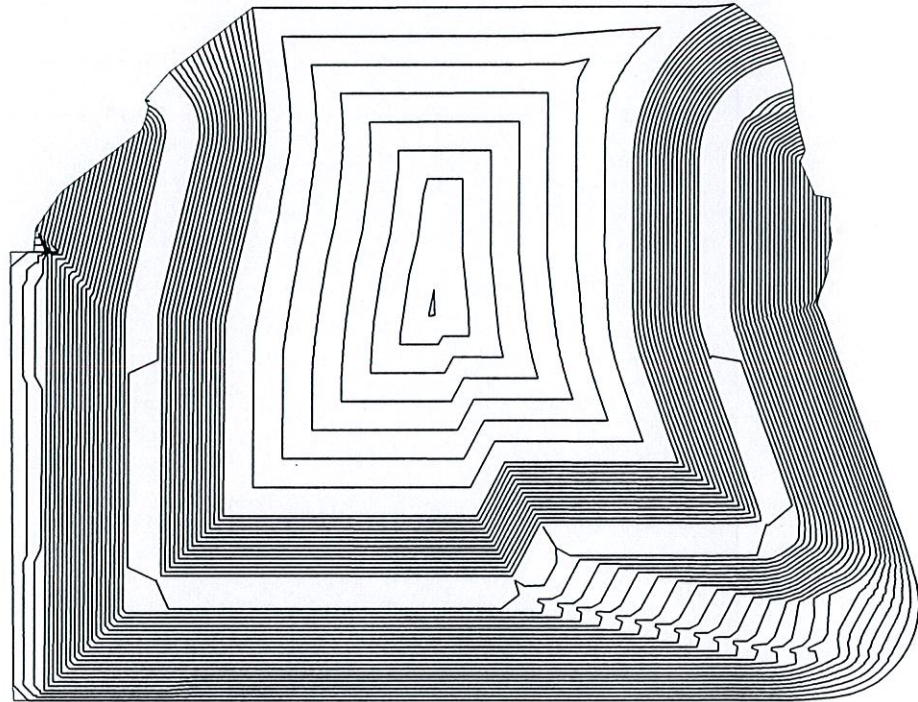
= 592,210.07 SF
= 65,801.12 SY
= 13.60 Acres

FLORIDA DEPARTMENT OF ENVIRONMENTAL PROTECTION
FEB 15 2012
SOUTHWEST DISTRICT
TAMPA

2 of 3

SCS ENGINEERS STEARNS, CONRAD AND SCHMIDT CONSULTING ENGINEERS 4841 PARK OAKS BLVD., SUITE 100, TAMPA, FL 33610 813 674-0980 FAX 813 664-9757 FLORIDA CERTIFICATE OF AUTHORIZATION NO. 00004890 <small>ISSUED 01/01/93 EXPIRES 12/31/99</small> PROJECT NO. 98199033.21 TOWN OF SDA CDR. BY SRF SRF UTM BY SRF SRF SRF	CADD FILE:		CLIENT		DRAWING TITLE		REV DATE DESCRIPTION BY
	DATE: 2-8-12		HARDEE COUNTY BOARD OF COUNTY COMMISSIONERS		PHASE I 40 MIL AND 60 MIL AREAS		
	SCALE: NTS				PROJECT TITLE HARDEE COUNTY LANDFILL		
	DRAWING NO.						
	2 of 3						
						SHANE R. FISCHER, P.E. LICENSE NO. 580026	

CSCEngineers.com\Projects\11\Construction\Volume and Area Estimates for Hardee Co. 1-2-12\Hardee County Coils and Seals.dwg Plot Date: 2/8/2012 - 11:29:04 AM User: Shane R. Fischer



Phase II Section I area for west, south, east
and top slopes up to piggy-back on the
south slope of Phase I are as follows:

= 273,954 SF
= 30,439 SY
= 6.29 Acres

Therefore, 6.29 acres are remaining to be
closed (Phase II Section I and the piggy-back
portion on to Phase I).



FLORIDA DEPARTMENT OF
ENVIRONMENTAL PROTECTION
FEB 15 2012
SOUTHWEST DISTRICT
TAMPA

SCS ENGINEERS STEARNS, CONRAD AND SCHMIDT CONSULTING ENGINEERS 4041 PARK OAKS BLVD., SUITE 100, TAMPA, FL 33610 813-867-0880 FAX 813-865-8757 FLORIDA CERTIFICATE OF AUTHORIZATION NO. 00064892		CLIENT HARDEE COUNTY BOARD OF COUNTY COMMISSIONERS		DRAWING TITLE PHASE II SECTION I AREA		REV	DATE	DESCRIPTION	BY
PROJECT NO. 11-03033.21		DWA. BY SDA		CHKD. BY SRF		1			
TODAY'S DATE 2/8/12		O/A REVIEW JCH		APP. BY SRF		2			
CADD FILE:		DATE: 2-8-12		SCALE: NTS		3			
DRAWING NO.		3 of 3		PROJECT TITLE HARDEE COUNTY LANDFILL		4			
						5			
						6			
						7			
						8			
						9			
						10			
						11			
						12			
						13			
						14			
						15			
						16			
						17			
						18			
						19			
						20			
						21			
						22			
						23			
						24			
						25			
						26			
						27			
						28			
						29			
						30			
						31			
						32			
						33			
						34			
						35			
						36			
						37			
						38			
						39			
						40			
						41			
						42			
						43			
						44			
						45			
						46			
						47			
						48			
						49			
						50			
						51			
						52			
						53			
						54			
						55			
						56			
						57			
						58			
						59			
						60			
						61			
						62			
						63			
						64			
						65			
						66			
						67			
						68			
						69			
						70			
						71			
						72			
						73			
						74			
						75			
						76			
						77			
						78			
						79			
						80			
						81			
						82			
						83			
						84			
						85			
						86			
						87			
						88			
						89			
						90			
						91			
						92			
						93			
						94			
						95			
						96			
						97			
						98			
						99			
						100			
						101			
						102			
						103			
						104			
						105			
						106			
						107			
						108			
						109			
						110			
						111			
						112			
						113			
						114			
						115			
						116			
						117			
						118			
						119			
						120			
						121			
						122			
						123			
						124			
						125			
						126			
						127			
						128			
						129			
						130			
						131			
						132			
						133			
						134			
						135			
						136			
						137			
						138			
						139			
						140			
						141			
						142			
						143			
						144			
						145			
						146			
						147			
						148			
						149			
						150			
						151			
						152			
						153			
						154			
						155			
						156			
						157			
						158			
						159			
						160			
						161			
						162			
						163			
						164			
						165			
						166			
						167			
						168			
						169			
						170			
						171			
						172			
						173			
						174			
						175			
						176			
						177			
						178			
						179			
						180			
						181			
						182			
						183			
						184			
						185			
						186			
						187			
						188			
						189			
						190			
						191			
						192			
						193			
						194			
						195			
						196			
						197			
						198			
						199			
						200			
						201			
						202			
						203			
						204			
						205			
						206			
						207			
						208			
						209			
						210			
						211			
						212			
						213			
						214			
						215			
						216			
						217			
						218			
						219			
						220			
						221			
						222			
						223			
						224			
						225			
						226			
						227			
						228			
						229			
						230			
						231			
						232			
						233			
						234			
						235			
						236			
						237			
						238			
						239			
						240			
						241			
						242			
						243			
						244			
						245			
						246			
						247			
						248			
						249			
						250			
						251			
						252			
						253			
						254			
						255			
						256			
						257			
						258			
						259			
						260			
						261			