



HDR

HDR Engineering, Inc.
5426 Bay Center Drive
Suite 400
Tampa, FL 33609-3444
HDR CA# 4213

Dept. of Environmental
Protection

FEB 20 2012

Southwest District

Drawings For

PHASES I-VI OPERATING SEQUENCE

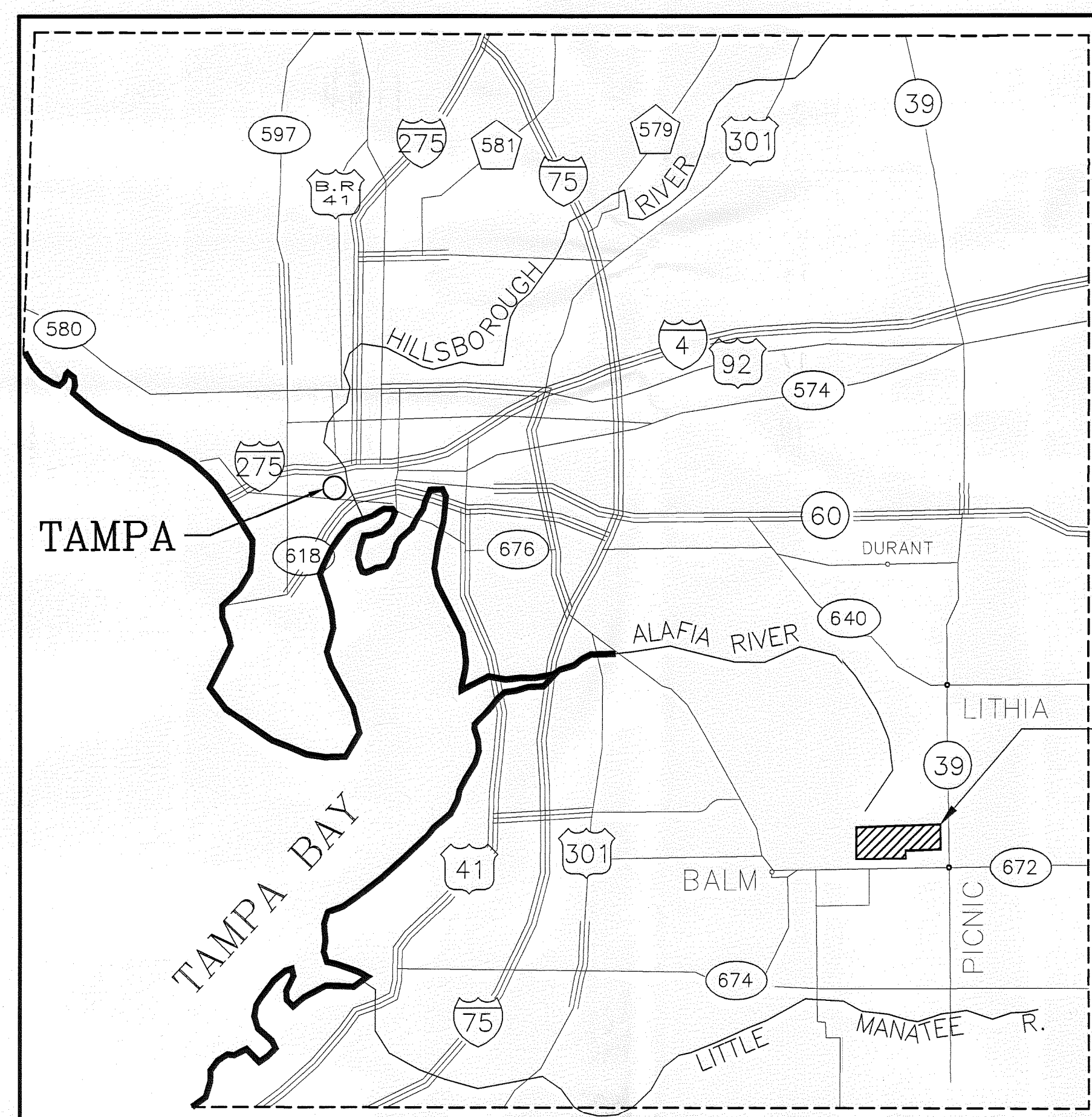
SOUTHEAST COUNTY LANDFILL HILLSBOROUGH COUNTY, FLORIDA

Project No.
096-171431-001

LITHIA, FLORIDA
FEBRUARY 2012

DRAWING INDEX

1	COVER SHEET
2	INDEX, LEGENDS AND GENERAL NOTES
3	FINAL DRAINAGE PLAN
8	PHASES I TO IV - LIFTS 8 TO 11
9	PHASES V AND VI - LIFT 12
10	PHASES I TO IV - LIFTS 13 TO 16
11	PHASES V AND VI - LIFT 17
12	PHASES I TO IV - LIFTS 18 TO 21
13	PHASES V AND VI - LIFT 22
14	PHASES V AND VI - LIFT 23 (FINAL LIFT)
17	LANDFILL SECTIONS
18	DETAILS 1
19	DETAILS 2
20	DETAILS 3



NOT TO SCALE

PROJECT
LOCATION

REVISED FEBRUARY 2012 HDR, INC.
REVISED DECEMBER 2011 HDR, INC.
REVISED JANUARY 16, 2007 JONES EDMUNDS
ORIGINAL DESIGN AUGUST 22, 1994 SCS ENGINEERS

FLORIDA DEPARTMENT OF
ENVIRONMENTAL PROTECTION
FEB 20 2012
SOUTHWEST DISTRICT
TAMPA

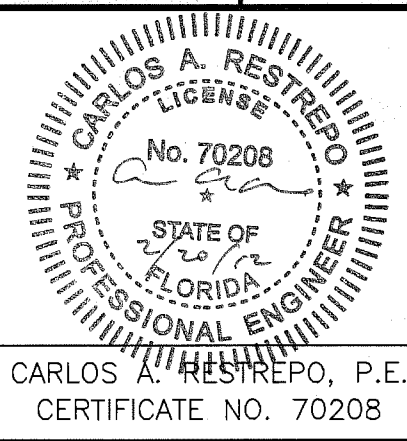
c:\working\hills\031609\00G-02.dwg, Plot: 2/16/2012 10:50:12 AM, btopjohn



HDR Engineering, Inc.
5425 Bay Center Drive
Suite 400
Tampa, FL 33609-3444
HDR CA# 4213

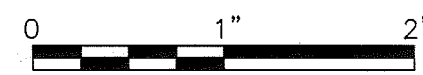
ISSUE	DATE	DESCRIPTION
B	02/2012	FDEP RAI #1
A	12/2011	FDEP SUBMITTAL

PROJECT MANAGER	R. SIEMERING
REVIEWED BY	C. RESTREPO
CIVIL DESIGN BY	J. TIMMONS
DRAWN BY	B. JOHNSON
PROJECT NUMBER	0096-171431-001



PHASES I-VI OPERATING SEQUENCE
SOUTHEAST COUNTY LANDFILL
HILLSBOROUGH COUNTY, FLORIDA

PHASES I-VI OPERATING SEQUENCE
INDEX, LEGENDS AND GENERAL NOTES



FILENAME	00G-02.DWG
SCALE	AS SHOWN

DWG No.	2
---------	---

ENGINEERING SYMBOLOGY

	LIFT NUMBER
	DAILY PROGRESSION
	FILL PROGRESSION
	DRAINAGE FLOW DIRECTION
	APPROXIMATE PHASE FOOTPRINT
	APPROXIMATE LANDFILL LIMITS
	APPROXIMATE LIFT LIMITS
	APPROXIMATE LIMITS OF BORROW AREA
	APPROXIMATE FINAL COVER AREA AFTER EACH LIFT
	APPROXIMATE GEOMEMBRANE FINAL COVER AREA
	EXISTING SWALE
	SIDESLOPE DITCH
	PROJECTED EXISTING CONTOUR
	PROPOSED CONTOUR
	PROPOSED DOWNCHUTE
BVC	BEGIN VERTICAL CURVE
CTRD	CENTERED
ERCP	ELLIPTICAL REINFORCED CONCRETE PIPE
EVC	END VERTICAL CURVE
	EXIST. CONTOURS
EXP. JT.	EXPANSION JOINT
I.E.	INVERT ELEVATION
LF	LINEAL FEET
LT	LEFT
PC	POINT OF CURVATURE
PI	POINT OF INTERSECTION
PT	POINT OF TANGENCY
PVI	POINT OF VERTICAL INTERSECTION
RT	RIGHT
TYP.	TYPICAL
	VEGETATION
VC	VERTICAL CURVE
Ø	DIAMETER
'	FOOT
"	INCH
	CELL DESIGNATION
	EXISTING DRAINAGE STRUCTURE
	TEMPORARY DRAINAGE STRUCTURE
	PROPERTY LINE
	STORMWATER STRUCTURE

GENERAL SYMBOLOGY

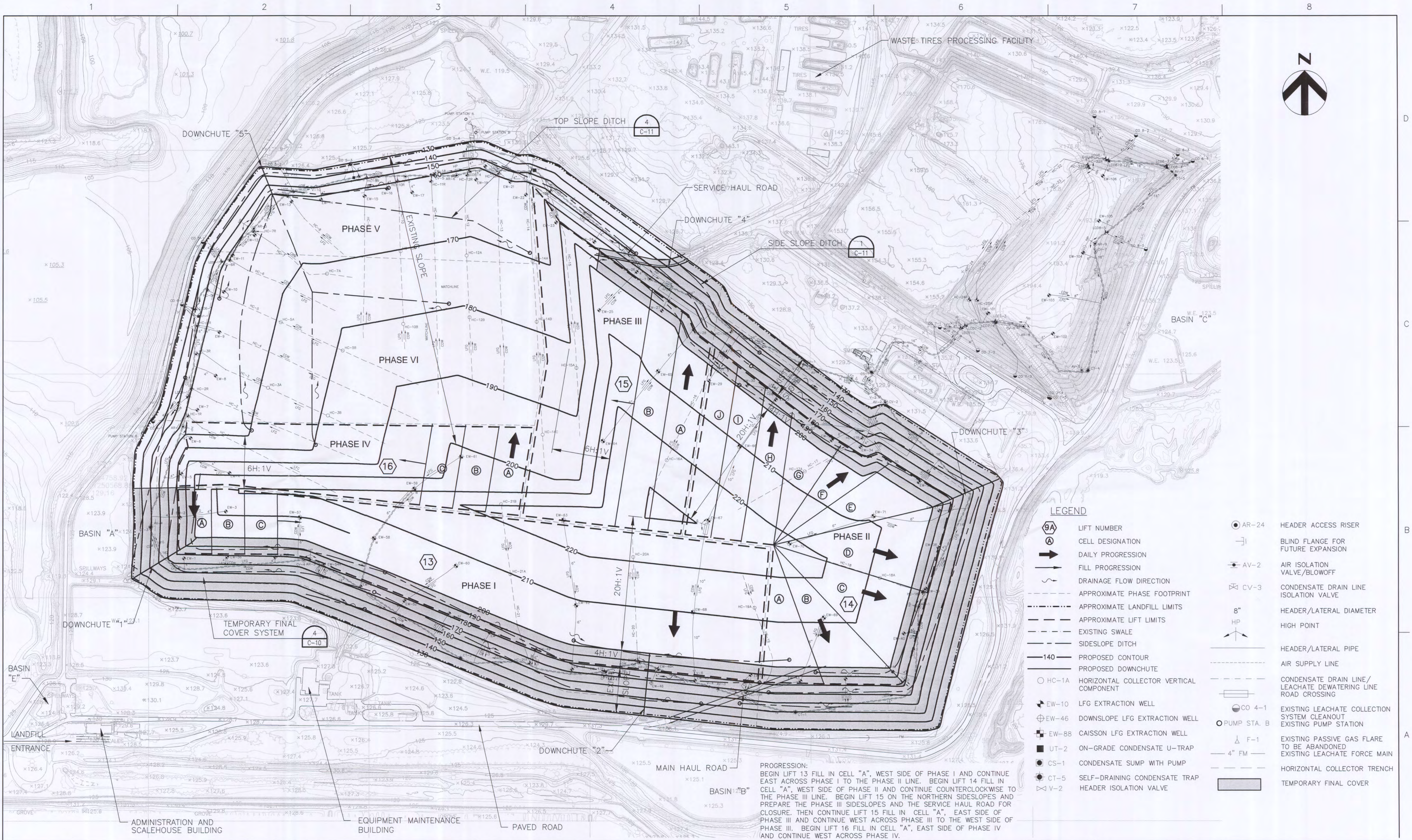
	ARROW INDICATES DIRECTION OF PLAN NORTH
	PLAN
	SECTION CUT MARKER
	SECTION
	DETAIL MARKER
	DETAIL MARKER
	DETAIL
	SINGLE ELEVATION OR PHOTO MARKER
	MULTIPLE ELEVATION OR PHOTO MARKER
	ELEVATION
	ELEVATION TITLE

ABBREVIATIONS

APPROX - APPROXIMATE, APPROXIMATELY
BLDG - BUILDING
BTM - BOTTOM
CB - CATCH BASIN
CM - CONCRETE MONUMENT
CMP - CORRUGATED METAL PIPE
CONC - CONCRETE
CONT - CONTINUOUS
CORR - CORRUGATED
DET - DETAIL
DIA - DIAMETER
DIM - DIMENSION
DWG - DRAWING
EA - EACH
EOL - EDGE OF LINER
ETC - ET CETERA
ENCL - ENCLOSURE, ENCLOSURE
EL - ELEVATION
EQUIP - EQUIPMENT
EXIST - EXISTING
FDEP - FLORIDA DEPARTMENT OF ENVIRONMENTAL PROTECTION
FDOT - FLORIDA DEPARTMENT OF TRANSPORTATION
FES - FLARED END SECTION
FIN - FINISHED
FM - FORCE MAIN
GALV - GALVANIZED
GCL - GEOSYNTHETIC CLAY LINER
GFFR - GROUT FILLED FIBER REVETMENT
GR - GRADE
GDL - GEOSYNTHETIC DRAINAGE LINER
GM - GAS MONITORING LOCATION
GP - GAS PROBE
HCSWMG - HILLSBOROUGH COUNTY SOLID WASTE MANAGEMENT GROUP
HDPE - HIGH DENSITY POLYETHYLENE
HP - HIGH POINT
ID - INSIDE DIAMETER
IE - INVERT ELEVATION
LF - LINEAL FEET
LFG - LANDFILL GAS
LLDPE - LINEAR LOW DENSITY POLYETHYLENE
LP - LOW POINT
MES - MITRED END SECTION
MAX - MAXIMUM
MH - MANHOLE
MIN - MINIMUM
MISC - MISCELLANEOUS
MSL - (ABOVE) MEAN SEAL LEVEL
MT - MOUNT
MW - GROUNDWATER MONITORING WELL
N/A - NOT APPLICABLE
N/AVAIL - NOT AVAILABLE
NGVD - NATIONAL GEODETIC VERTICAL DATUM
NIC - NOT IN CONTRACT
No - NUMBER
NTS - NOT TO SCALE
OC - ON CENTER
OD - OUTSIDE DIAMETER
OSHA - OCCUPATIONAL SAFETY & HEALTH ADMINISTRATION
PLS - PROFESSIONAL LAND SURVEYOR
PS - PUMP STATION
R - RADIUS
RCP - REINFORCED CONCRETE PIPE
REF - REFERENCE
REQD - REQUIRED
SCH - SCHEDULE
SDR - STANDARD DIMENSION RATIO
SHT - SHEET
SIM - SIMILAR
SS - STAINLESS STEEL
STD - STANDARD
STL - STEEL
STW - STORMWATER MONITORING STATION
TPO - THERMOPLASTIC POLYOLEFIN
TYP - TYPICAL
USC&GS - UNITED STATES COASTAL AND GEODETIC SURVEY
USGS - UNITED STATES GEOLOGICAL SURVEY
WGT - WEIGHT
W.E. - WATER ELEVATION
WWTP - WASTE WATER TREATMENT PLANT

GENERAL NOTES

- THE EXISTING TOPOGRAPHY, DATED 7/5/2011, WAS OBTAINED FROM DRAWINGS PROVIDED BY PICKETT & ASSOCIATES, INC.
- THE PROPOSED OPERATING SEQUENCES (LIFTS 13 - 23) ARE BASED ON THE EXISTING TOPOGRAPHY SHOWN ON THE (7/5/2011) AERIAL SURVEY. ACTUAL OPERATING SEQUENCES MAY NEED TO BE MODIFIED IN THE FIELD TO ALLOW FOR LANDFILL SETTLEMENT. REVISED GRADES WILL BE DETERMINED BASED ON THE MAXIMUM DESIGNED 20-FOOT LIFT HEIGHT.
- SUFFICIENT TIME MUST BE PROVIDED TO ALLOW CONSOLIDATION TO OCCUR BEFORE ADDITIONAL LOADING CAN BE PLACED. 95 PERCENT CONSOLIDATION FOR A 20-FOOT LIFT OF REFUSE IS APPROXIMATELY 7 YEARS. THEREFORE, DEPENDING ON THE ACTUAL DISPOSAL RATES, THE POSSIBILITY EXISTS THAT THE HCSWMG MAY HAVE TO DIVERT WASTE PLACEMENT TO ANOTHER FACILITY IF NOT ENOUGH CONSOLIDATION TIME IS ALLOWED FOR ANY 20-FOOT LIFT. ALL FILL PLACEMENT SCHEDULES SHOWN ON THE DRAWINGS REPRESENT A CONTINUOUS FILLING SEQUENCE BASED ON EXISTING AND PROJECTED DISPOSAL RATES PREPARED BY THE HCSWMG.
- THE LANDFILL LINER AND EXISTING DRAINAGE STRUCTURES WERE SURVEYED BY WEIDENER SURVEY AND MAPPING PA ON 2/23/94.



PROGRESSION:
BEGIN LIFT 13 FILL IN CELL "A", WEST SIDE OF PHASE I AND CONTINUE EAST ACROSS PHASE I TO THE PHASE II LINE. BEGIN LIFT 14 FILL IN CELL "A", WEST SIDE OF PHASE II AND CONTINUE COUNTERCLOCKWISE TO THE PHASE III LINE. BEGIN LIFT 15 ON THE NORTHERN SIDESLOPES AND PREPARE THE PHASE III SIDESLOPES AND THE SERVICE HAUL ROAD FOR CLOSURE. THEN CONTINUE LIFT 15 FILL IN CELL "A", EAST SIDE OF PHASE III AND CONTINUE WEST ACROSS PHASE III TO THE WEST SIDE OF PHASE III. BEGIN LIFT 16 FILL IN CELL "A", EAST SIDE OF PHASE IV AND CONTINUE WEST ACROSS PHASE IV.



B	02/2012	FDEP RAI #1	
A	12/2011	FDEP SUBMITTAL	
ISSUE	DATE	DESCRIPTION	

PROJECT MANAGER	R. SIEMERING
REVIEWED BY	C. RESTREPO
CIVIL DESIGN BY	J. TIMMONS
DRAWN BY	B. JOHNSON
PROJECT NUMBER	0096-171431-001



PHASES I-VI OPERATING SEQUENCE SOUTHEAST COUNTY LANDFILL HILLSBOROUGH COUNTY, FLORIDA

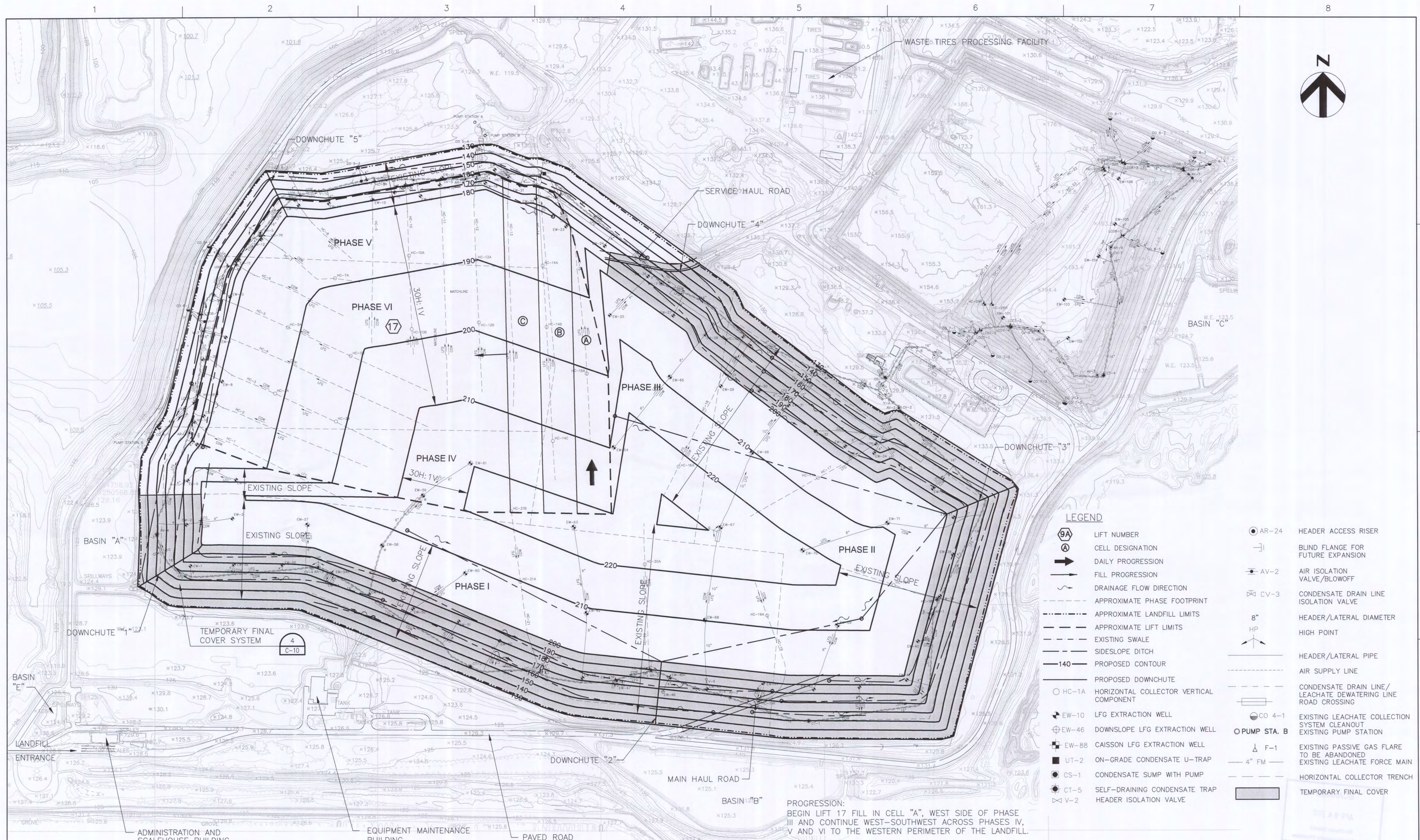
PHASES I-VI OPERATING SEQUENCE
PHASES I TO IV - LIFTS 13 TO 16

0 1" 2"

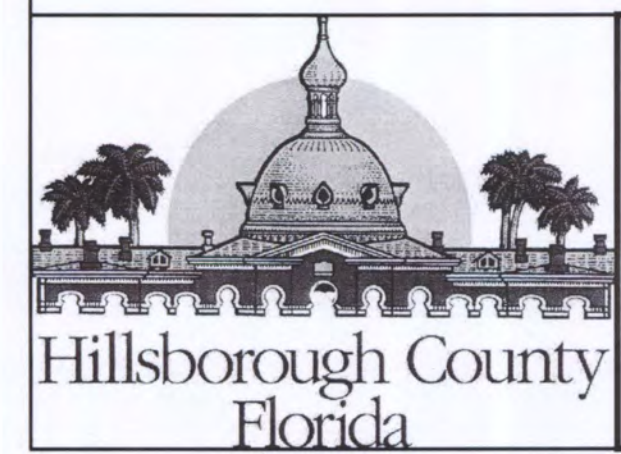
FILENAME: 00C-04.DWG
SCALE: 1"=200'

DWG No. 10

FLORIDA DEPARTMENT OF ENVIRONMENTAL PROTECTION
FEB 20 2012
SOUTHWEST DISTRICT
TAMPA



PROGRESSION:
BEGIN LIFT 17 FILL IN CELL "A", WEST SIDE OF PHASE III AND CONTINUE WEST-SOUTHWEST ACROSS PHASES IV, V AND VI TO THE WESTERN PERIMETER OF THE LANDFILL.



HDR
HDR Engineering, Inc.
5426 Bay Center Drive
Suite 400
Tampa, FL 33609-3444
HDR CA# 4213

B	02/2012	FDEP RAI #1
A	12/2011	FDEP SUBMITTAL
ISSUE	DATE	DESCRIPTION

PROJECT MANAGER	R. SIEMERING
REVIEWED BY	C. RESTREPO
CIVIL DESIGN BY	J. TIMMONS
DRAWN BY	B. JOHNSON
PROJECT NUMBER	0096-171431-001

CARLOS A. RESTREPO
No. 70208
STATE OF FLORIDA
PROFESSIONAL ENGINEER
CARLOS A. RESTREPO, P.E.
CERTIFICATE NO. 70208

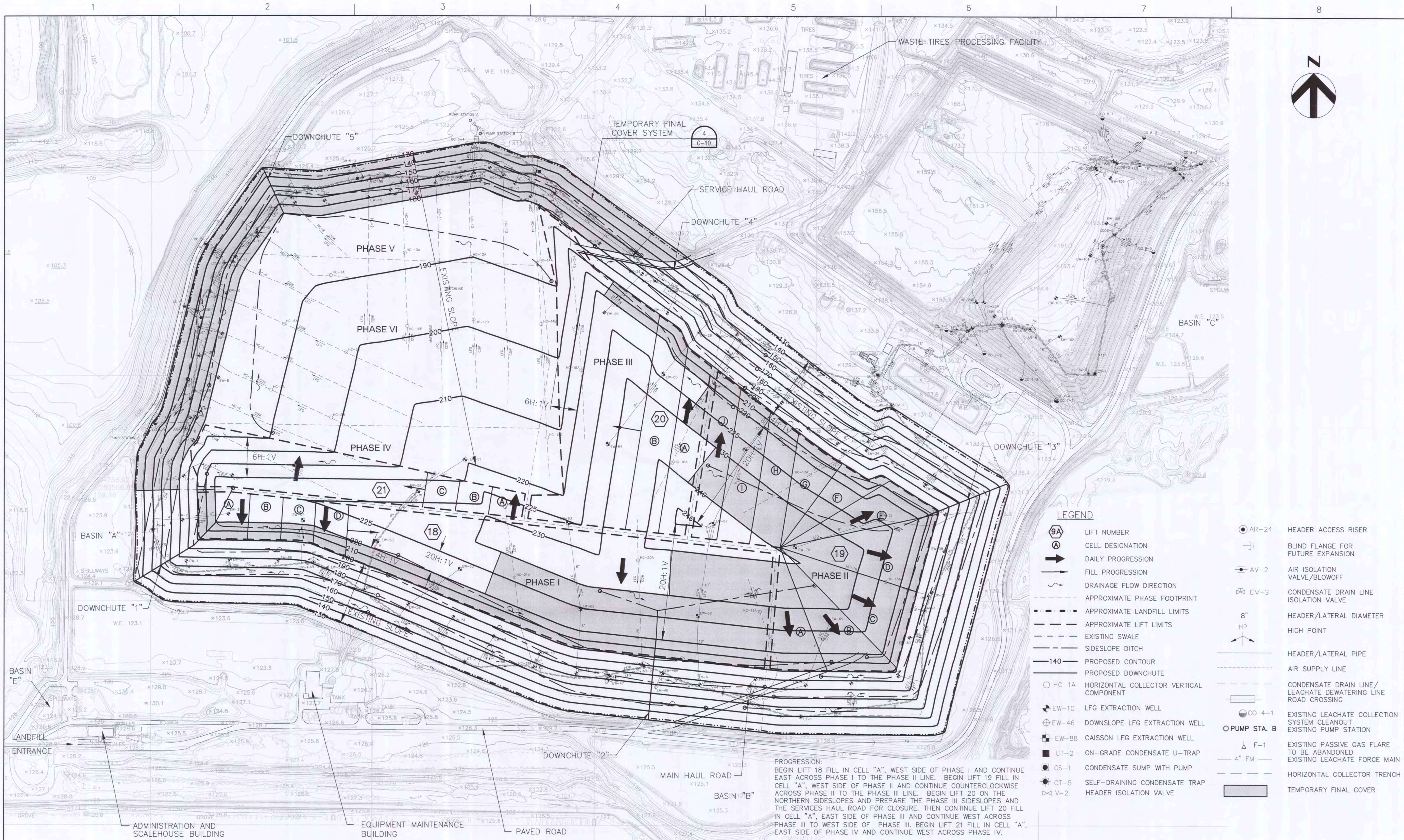
**PHASES I-VI OPERATING SEQUENCE
SOUTHEAST COUNTY LANDFILL
HILLSBOROUGH COUNTY, FLORIDA**

**PHASES I-VI OPERATING SEQUENCE
PHASES V AND VI - LIFT 17**

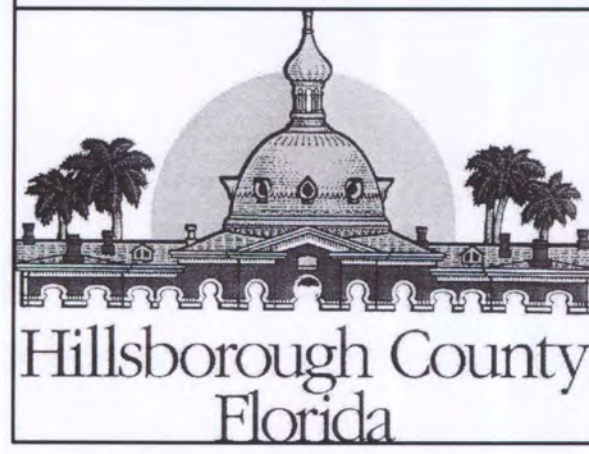
0 1" 2"
SCALE 1"=200'

FILENAME	00C-05.DWG	DWG No.
SCALE	1"=200'	11

FLORIDA DEPARTMENT OF ENVIRONMENTAL PROTECTION
FEB 20 2012
SOUTHWEST DISTRICT TAMPA



PROGRESSION:
BEGIN LIFT 18 FILL IN CELL "A", WEST SIDE OF PHASE I AND CONTINUE EAST ACROSS PHASE I TO THE PHASE II LINE. BEGIN LIFT 19 FILL IN CELL "A", WEST SIDE OF PHASE II AND CONTINUE COUNTERCLOCKWISE ACROSS PHASE II TO THE PHASE III LINE. BEGIN LIFT 20 ON THE NORTHERN SIDESLOPES AND PREPARE THE PHASE III SIDESLOPES AND THE SERVICES HAUL ROAD FOR CLOSURE. THEN CONTINUE LIFT 20 FILL IN CELL "A", EAST SIDE OF PHASE III AND CONTINUE WEST ACROSS PHASE III TO WEST SIDE OF PHASE III. BEGIN LIFT 21 FILL IN CELL "A", EAST SIDE OF PHASE IV AND CONTINUE WEST ACROSS PHASE IV.



HDR HDR Engineering, Inc. 5425 Bay Center Drive Suite 400 Tampa, FL 33609-3444 HDR CA# 4213		
B	02/2012	FDEP RAI #1
A	12/2011	FDEP SUBMITTAL
ISSUE	DATE	DESCRIPTION

PROJECT MANAGER	R. SIEMERING
REVIEWED BY	C. RESTREPO
CIVIL DESIGN BY	J. TIMMONS
DRAWN BY	B. JOHNSON
PROJECT NUMBER	0096-171431-001

CARLOS A. RESTREPO, P.E.
CERTIFICATE NO. 70208

**PHASES I-VI OPERATING SEQUENCE
SOUTHEAST COUNTY LANDFILL
HILLSBOROUGH COUNTY, FLORIDA**

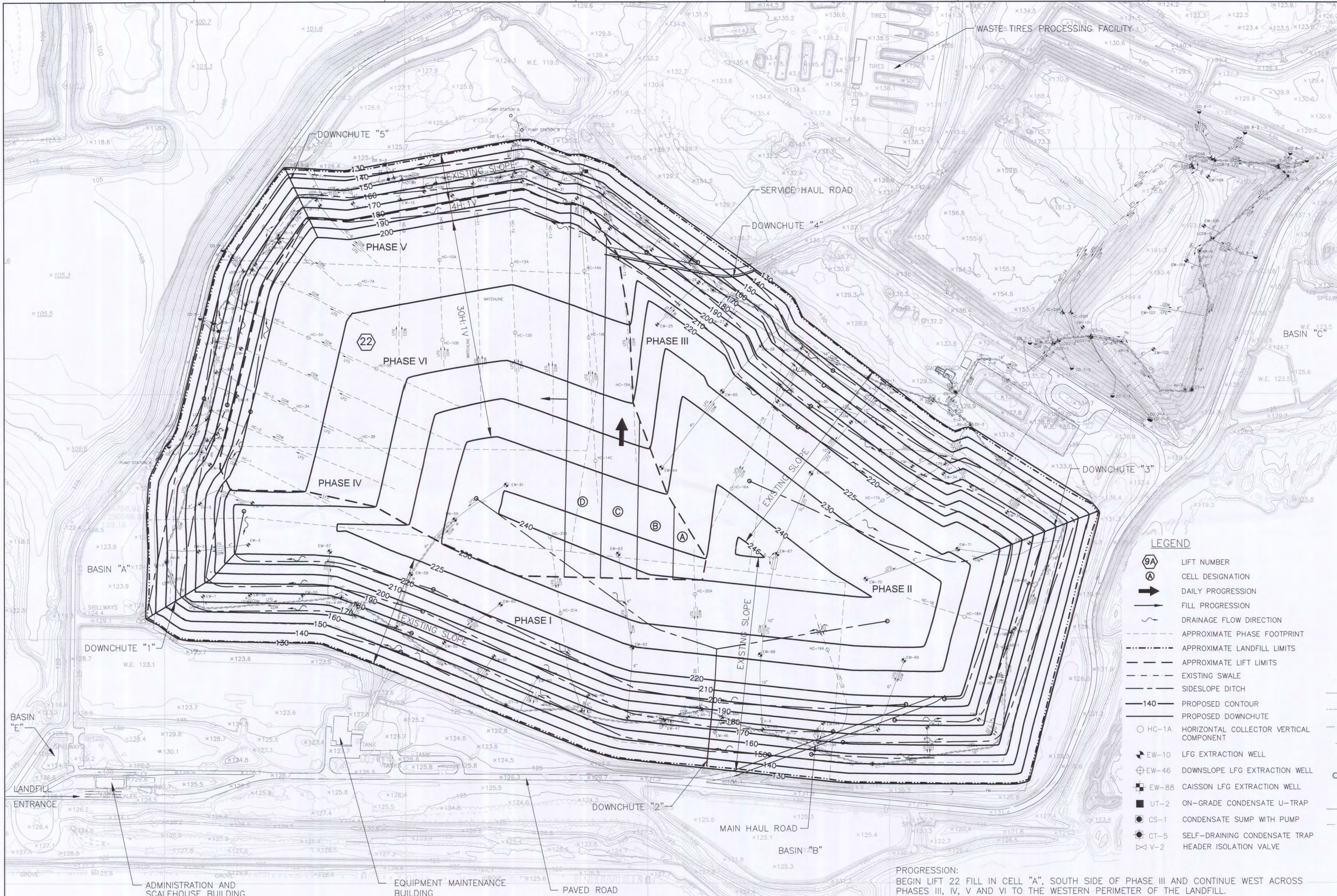
PHASES I-VI OPERATING SEQUENCE
PHASES I TO IV - LIFTS 18 TO 21

0 1" 2"
SCALE 1"=200'

FILENAME OOC-06.DWG
SCALE 1"=200'

DWG No. 12

FLORIDA DEPARTMENT OF ENVIRONMENTAL PROTECTION
FEB 20 2012
SOUTHWEST DISTRICT
TAMPA



LEGEND

- | | | | |
|-------|---|-------|--|
| 9A | LIFT NUMBER | AR-24 | HEADER ACCESS RISER |
| A | CELL DESIGNATION | BL | BLIND FLANGE FOR FUTURE EXPANSION |
| → | DAILY PROGRESSION | AV-2 | AIR ISOLATION VALVE/BLOWOFF |
| → | FILL PROGRESSION | CV-3 | CONDENSATE DRAIN LINE ISOLATION VALVE |
| → | DRAINAGE FLOW DIRECTION | 8" | HEADER/LATERAL DIAMETER |
| --- | APPROXIMATE PHASE FOOTPRINT | HP | HIGH POINT |
| --- | APPROXIMATE LANDFILL LIMITS | → | HEADER/LATERAL PIPE |
| --- | APPROXIMATE LIFT LIMITS | --- | AIR SUPPLY LINE |
| --- | EXISTING SWALE | --- | CONDENSATE DRAIN LINE/LEACHATE DEWATERING LINE ROAD CROSSING |
| --- | SIDESLOPE DITCH | --- | EXISTING LEACHATE COLLECTION SYSTEM CLEANOUT |
| 140 | PROPOSED CONTOUR | --- | EXISTING PUMP STATION |
| --- | PROPOSED DOWNCHUTE | --- | EXISTING PASSIVE GAS FLARE TO BE ABANDONED |
| HC-1A | HORIZONTAL COLLECTOR VERTICAL COMPONENT | --- | EXISTING LEACHATE FORCE MAIN |
| EW-10 | LFG EXTRACTION WELL | --- | HORIZONTAL COLLECTOR TRENCH |
| EW-46 | DOWNSLOPE LFG EXTRACTION WELL | --- | |
| EW-88 | CAISSON LFG EXTRACTION WELL | --- | |
| UT-2 | ON-GRADE CONDENSATE U-TRAP | --- | |
| CS-1 | CONDENSATE SUMP WITH PUMP | --- | |
| CT-5 | SELF-DRAINING CONDENSATE TRAP | --- | |
| V-2 | HEADER ISOLATION VALVE | --- | |

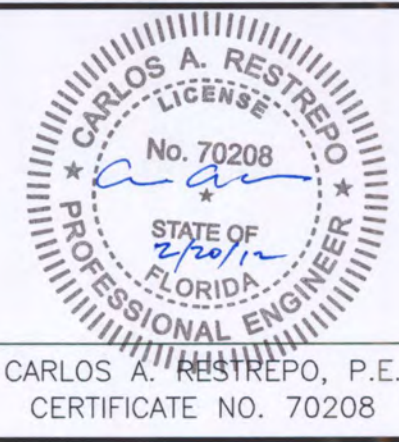
PROGRESSION:
BEGIN LIFT 22 FILL IN CELL "A", SOUTH SIDE OF PHASE III AND CONTINUE WEST ACROSS
PHASES III, IV, V AND VI TO THE WESTERN PERIMETER OF THE LANDFILL.



HDR Engineering, Inc.
5426 Bay Center Drive
Suite 400
Tampa, FL 33609-3444
HDR CAF 4213

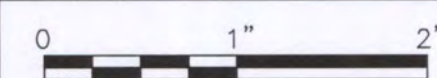
B	02/2012	FDEP RAI #1
A	12/2011	FDEP SUBMITTAL
ISSUE	DATE	DESCRIPTION

PROJECT MANAGER	R. SIEMERING
REVIEWED BY	C. RESTREPO
CIVIL DESIGN BY	J. TIMMONS
DRAWN BY	B. JOHNSON
PROJECT NUMBER	0096-171431-001



PHASES I-VI OPERATING SEQUENCE SOUTHEAST COUNTY LANDFILL HILLSBOROUGH COUNTY, FLORIDA

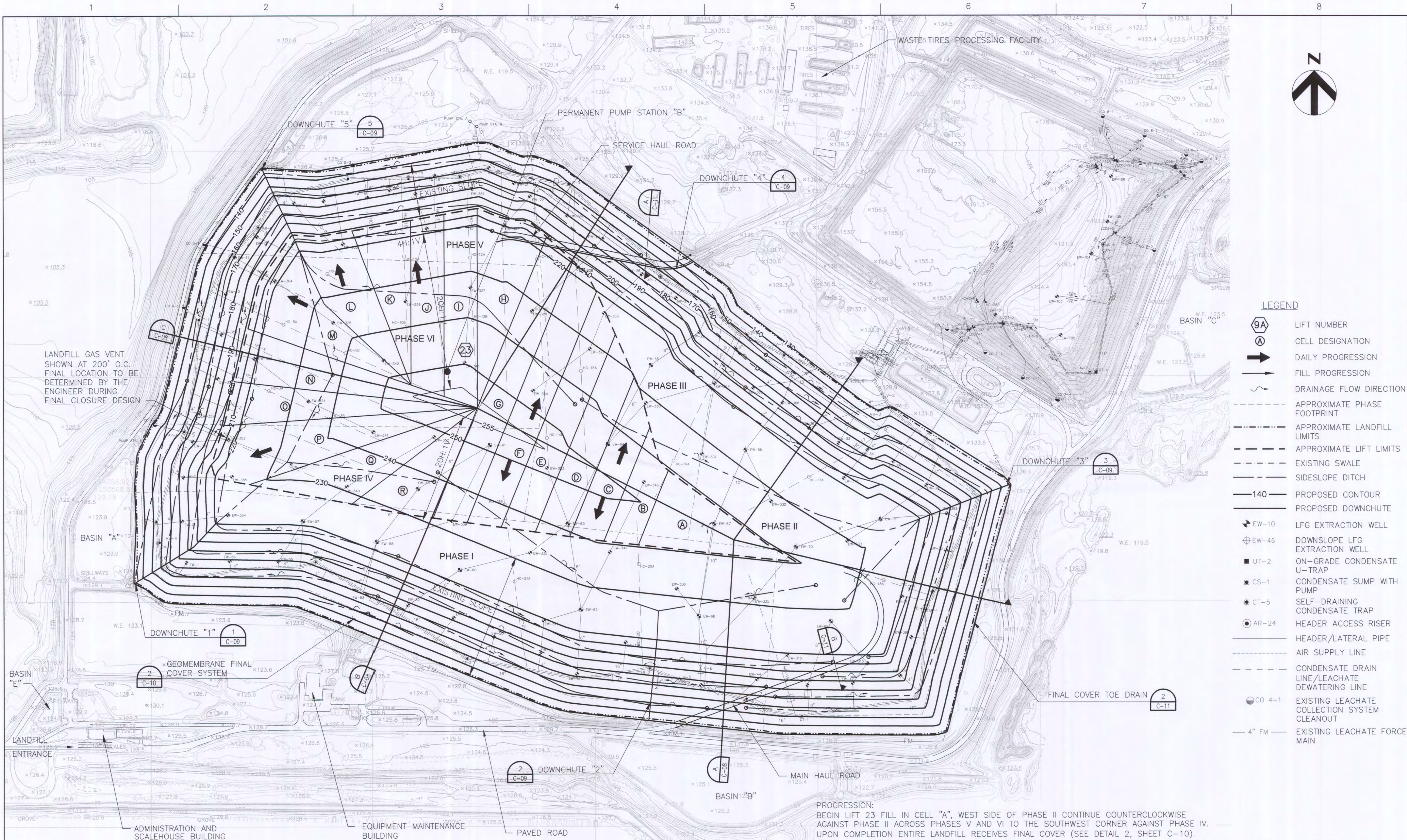
PHASES I-VI OPERATING SEQUENCE PHASES V AND VI - LIFT 22



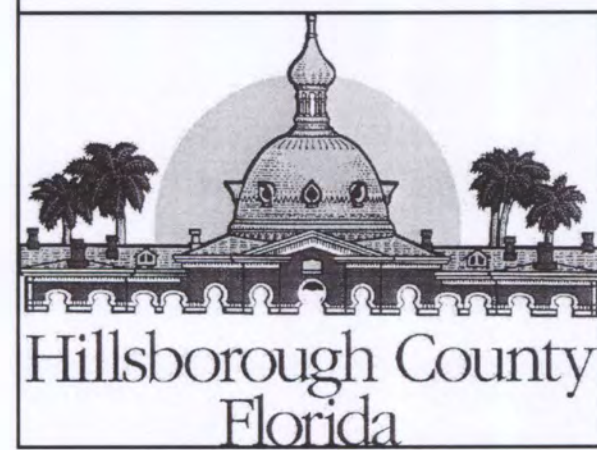
FILENAME	00C-07.DWG
SCALE	1"=200'

DWG No.	13
---------	----

FLORIDA DEPARTMENT OF
ENVIRONMENTAL PROTECTION
FEB 20 2012
SOUTHWEST DISTRICT
TAMPA

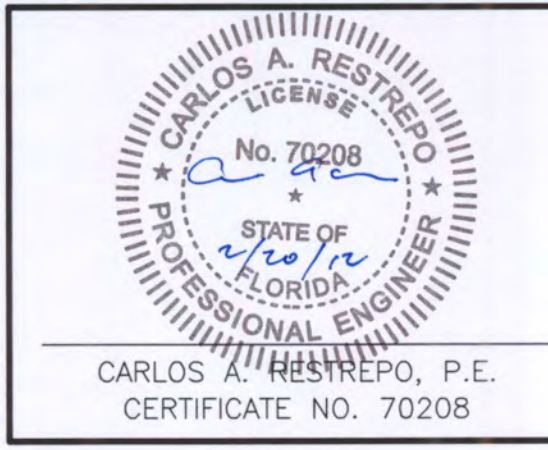


PROGRESSION:
BEGIN LIFT 23 FILL IN CELL "A", WEST SIDE OF PHASE II CONTINUE COUNTERCLOCKWISE
AGAINST PHASE II ACROSS PHASES V AND VI TO THE SOUTHWEST CORNER AGAINST PHASE IV.
UPON COMPLETION ENTIRE LANDFILL RECEIVES FINAL COVER (SEE DETAIL 2, SHEET C-10).



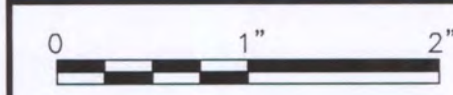
B	02/2012	FDEP RAI #1
A	12/2011	FDEP SUBMITTAL
ISSUE	DATE	DESCRIPTION

PROJECT MANAGER	R. SIEMERING
REVIEWED BY	C. RESTREPO
CIVIL DESIGN BY	J. TIMMONS
DRAWN BY	B. JOHNSON
PROJECT NUMBER	0096-171431-001



PHASES I-VI OPERATING SEQUENCE
SOUTHEAST COUNTY LANDFILL
HILLSBOROUGH COUNTY, FLORIDA

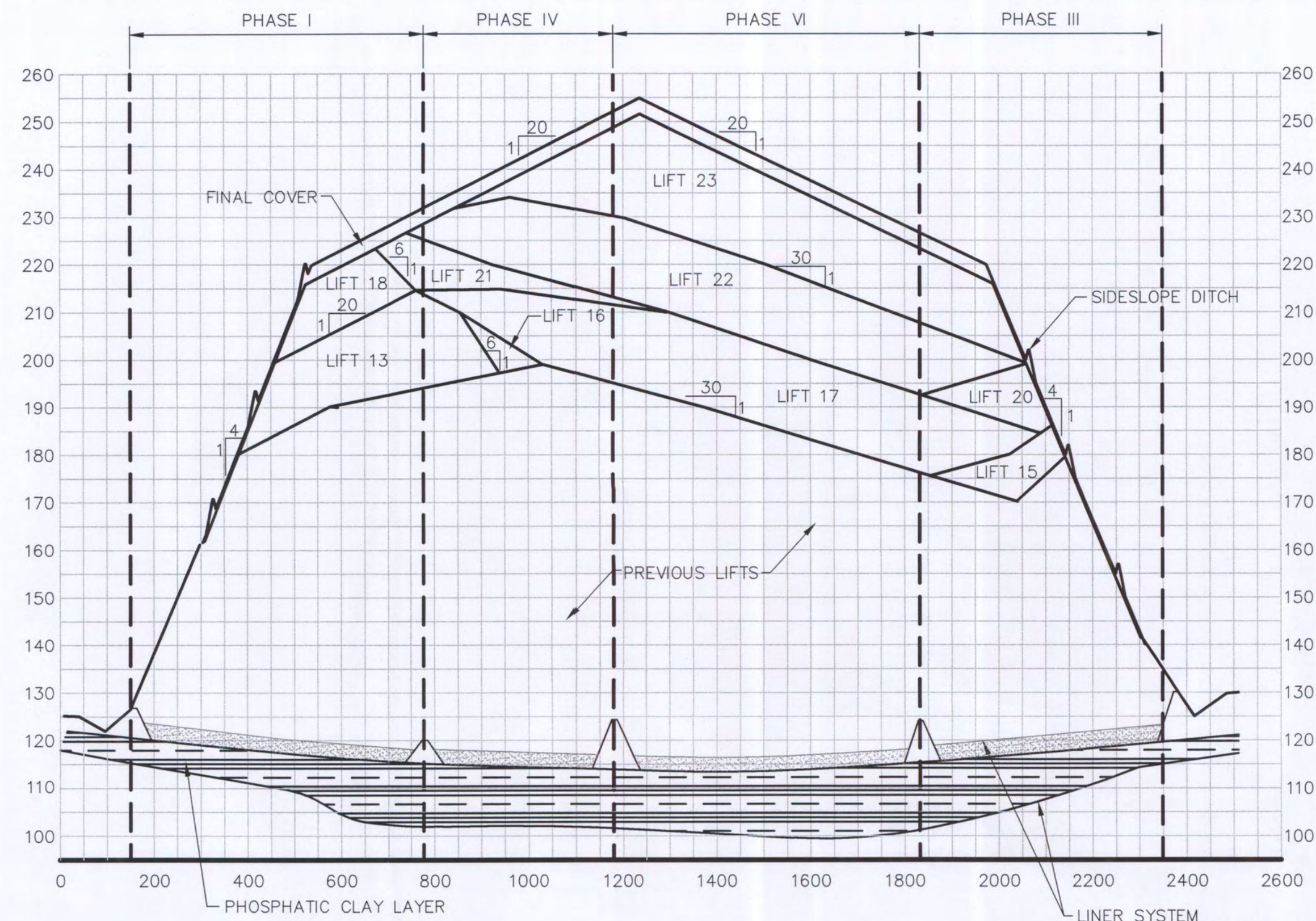
PHASES I-VI OPERATING SEQUENCE
PHASES V AND VI - LIFT 23 (FINAL LIFT)



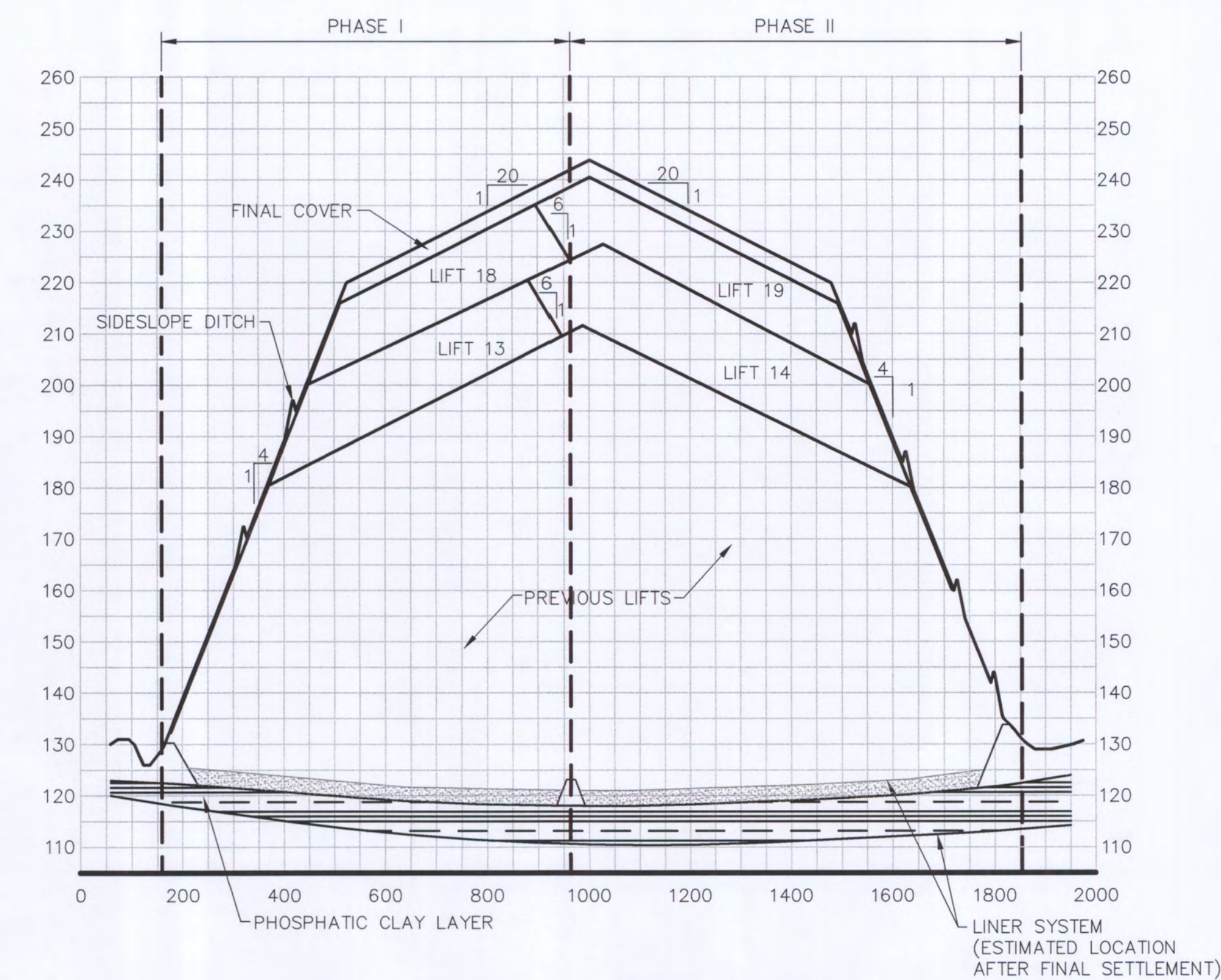
FILENAME	00C-08.DWG
SCALE	1"=200'

DWG No.	14
---------	----

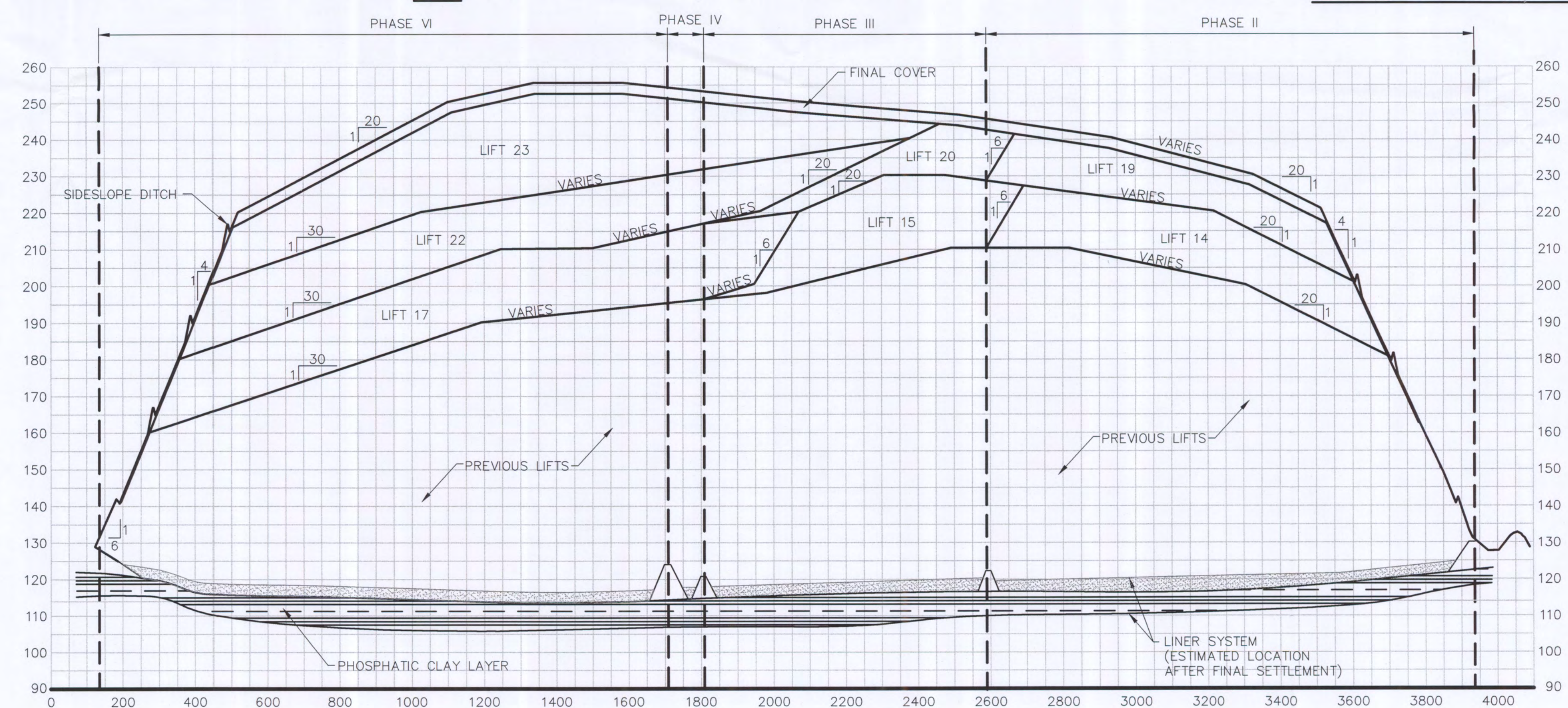
FLORIDA DEPARTMENT OF
ENVIRONMENTAL PROTECTION
FEB 20 2012
SOUTHWEST DISTRICT
TAMPA



LANDFILL CROSS SECTION B C-07

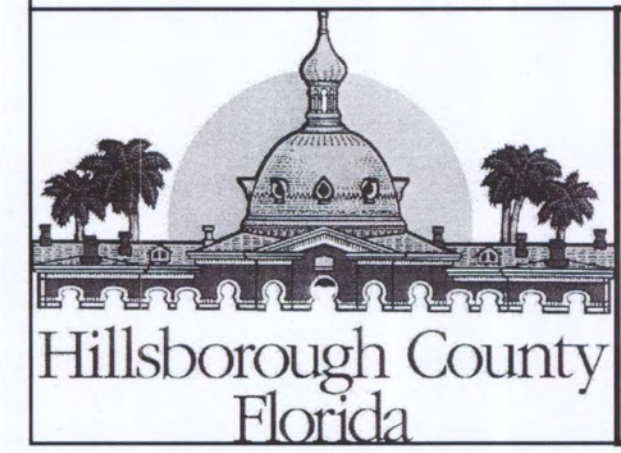


LANDFILL CROSS SECTION A C-07



LANDFILL CROSS SECTION C C-07

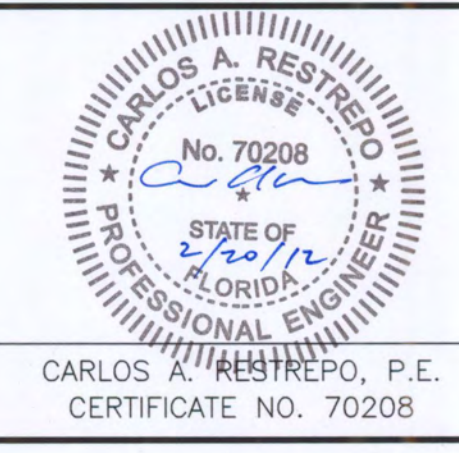
NOTE:
SOME SLOPES AND LIFT SIZE VARY DUE
TO SECTION CUT ORIENTATION. SEE SHEET
C-07 FOR SECTION LOCATIONS.



HDR Engineering, Inc.
5426 Bay Center Drive
Suite 400
Tampa, FL 33609-3444
HDR CA# 4213

B	02/2012	FDEP RAI #1
A	12/2011	FDEP SUBMITTAL
ISSUE	DATE	DESCRIPTION

PROJECT MANAGER	R. SIEMERING
REVIEWED BY	C. RESTREPO
CIVIL DESIGN BY	J. TIMMONS
DRAWN BY	B. JOHNSON
PROJECT NUMBER	0096-171431-001



CARLOS A. RESTREPO, P.E.
CERTIFICATE NO. 70208

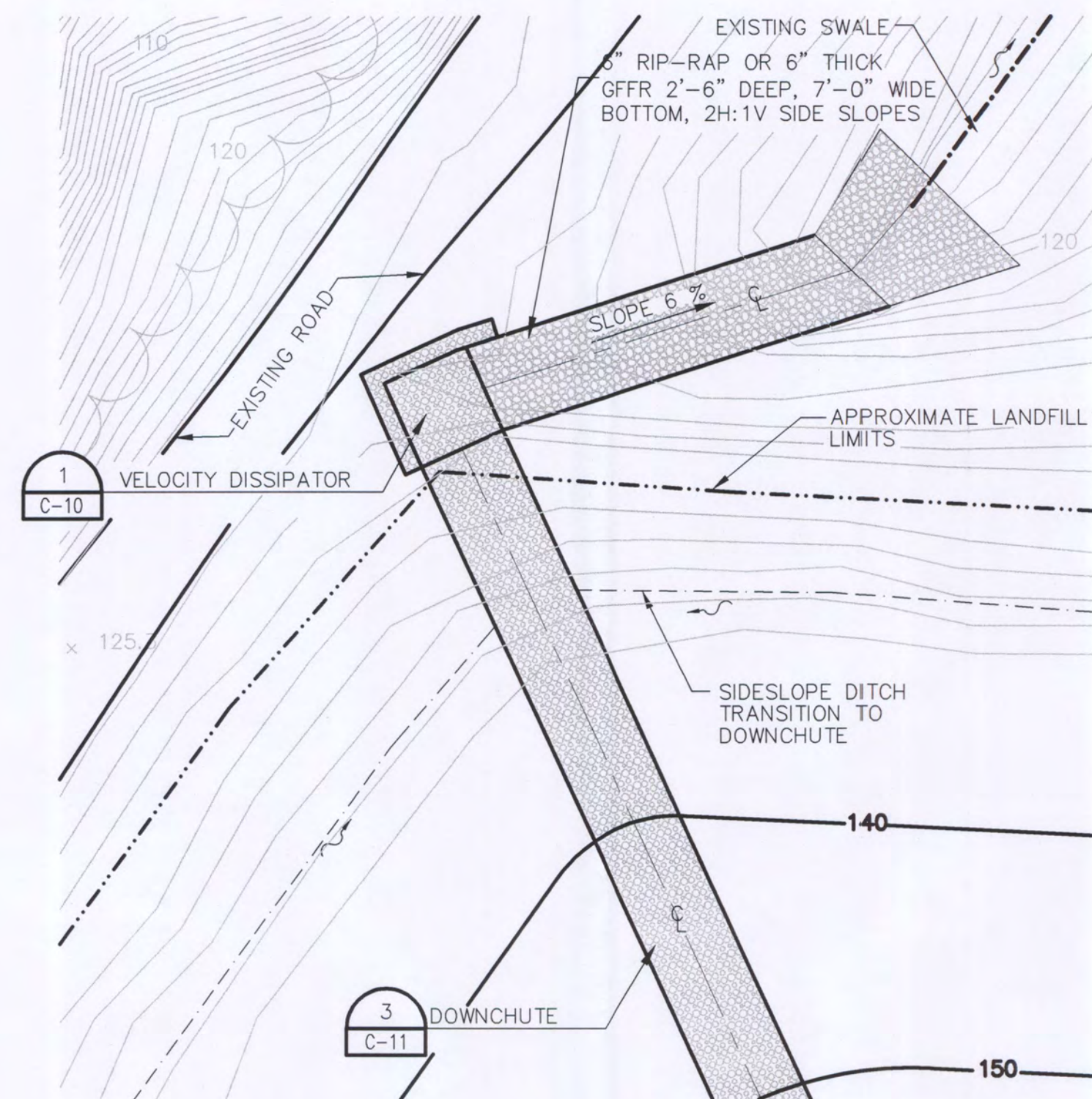
PHASES I-VI OPERATING SEQUENCE
SOUTHEAST COUNTY LANDFILL
HILLSBOROUGH COUNTY, FLORIDA

PHASES I-VI OPERATING SEQUENCE
LANDFILL SECTIONS

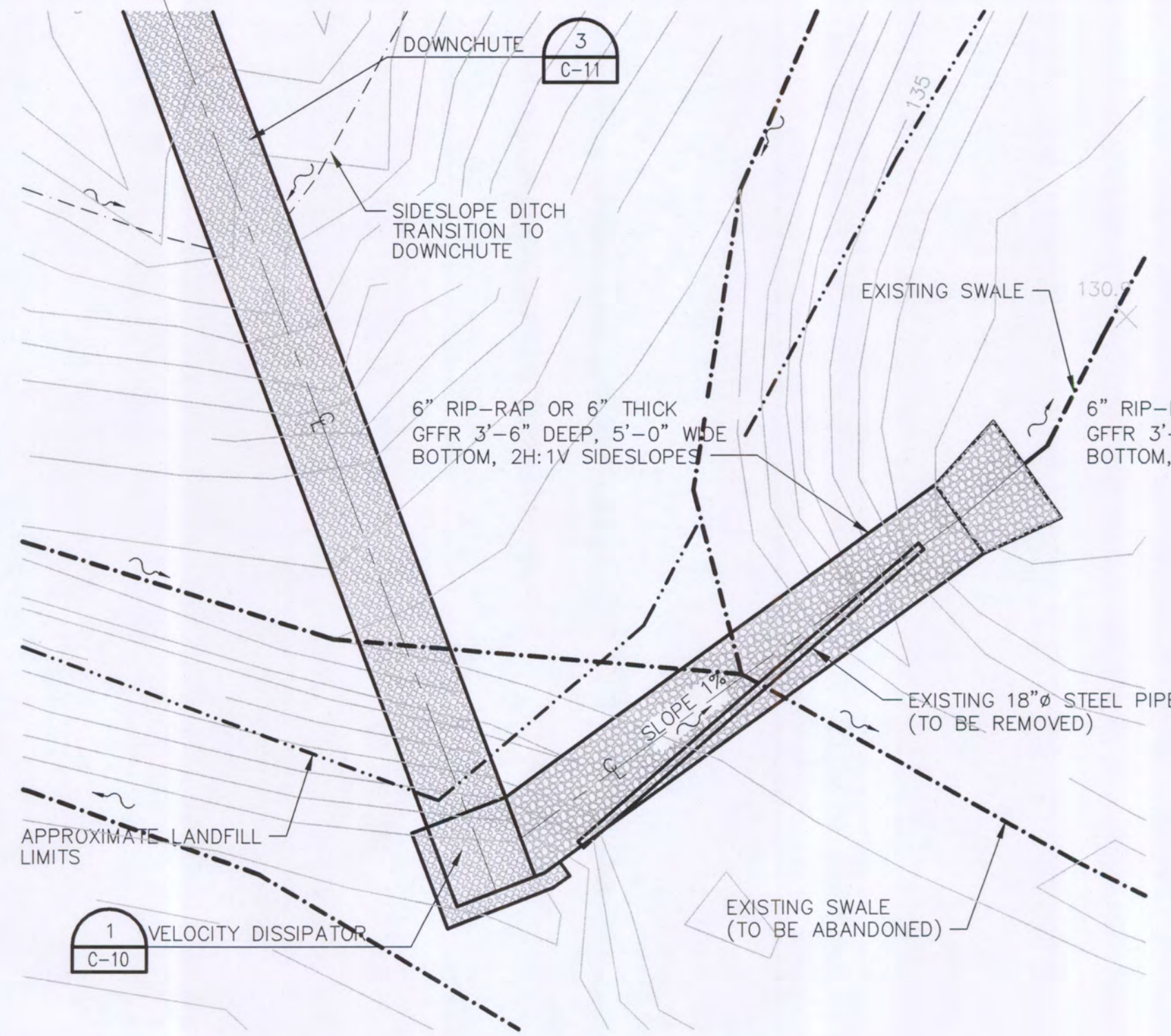
FILENAME: 00C-09.DWG
SCALE: NOT TO SCALE

DWG No. 17

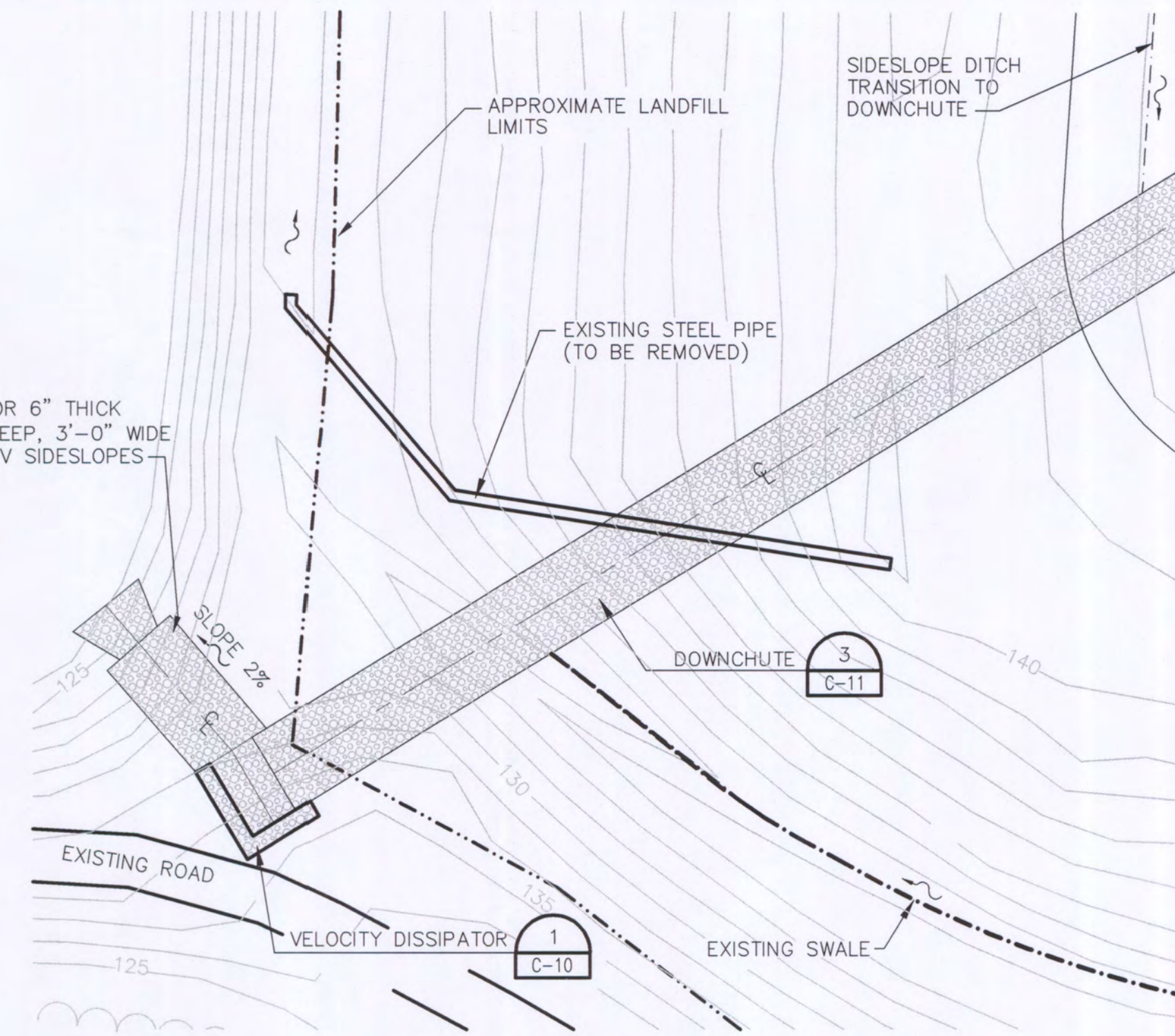
FLORIDA DEPARTMENT OF ENVIRONMENTAL PROTECTION
FEB 20 2012
SOUTHWEST DISTRICT
TAMPA



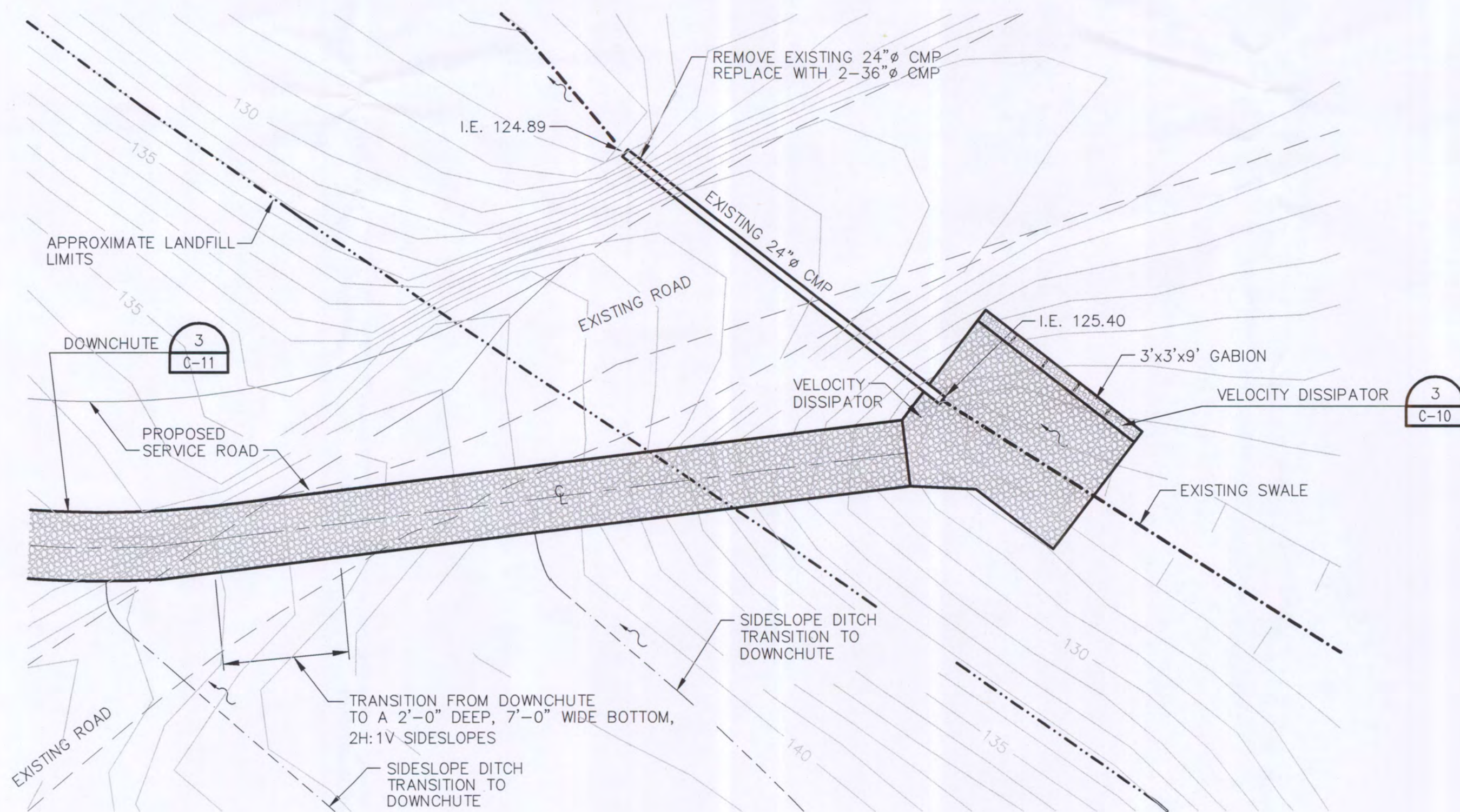
DOWNCHUTE "5" - PLAN DETAIL



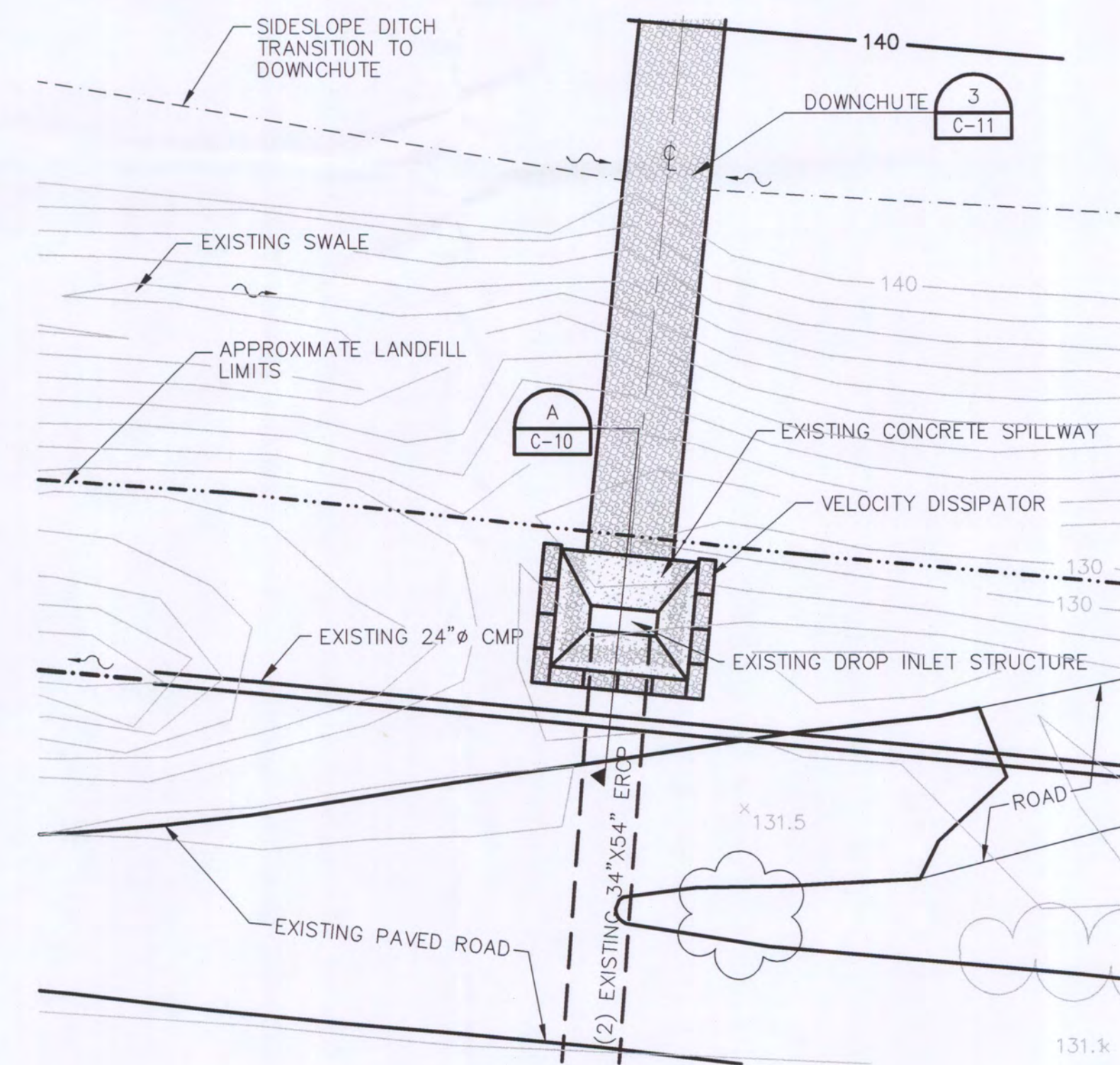
DOWNCHUTE "3" - PLAN DETAIL



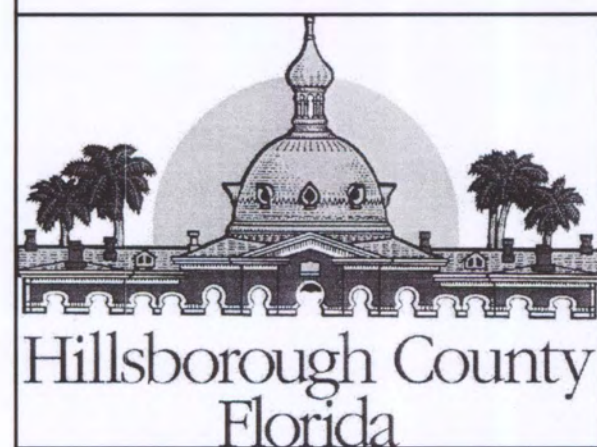
DOWNCHUTE "1" - PLAN DETAIL



DOWNCHUTE "4" - PLAN DETAIL



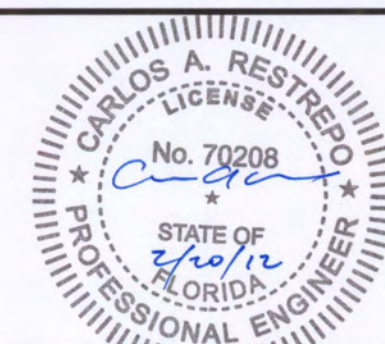
DOWNCHUTE "2" - PLAN DETAIL



HDR Engineering, Inc.
5426 Bay Center Drive
Suite 400
Tampa, FL 33609-3444
HDR CA# 4213

B	02/2012	FDEP RAI #1
A	12/2011	FDEP SUBMITTAL
ISSUE	DATE	DESCRIPTION

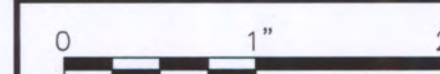
PROJECT MANAGER	R. SIEMERING
REVIEWED BY	C. RESTREPO
CIVIL DESIGN BY	J. TIMMONS
DRAWN BY	B. JOHNSON
PROJECT NUMBER	0096-171431-001



CARLOS A. RESTREPO, P.E.
CERTIFICATE NO. 70208

PHASES I-VI OPERATING SEQUENCE SOUTHEAST COUNTY LANDFILL HILLSBOROUGH COUNTY, FLORIDA

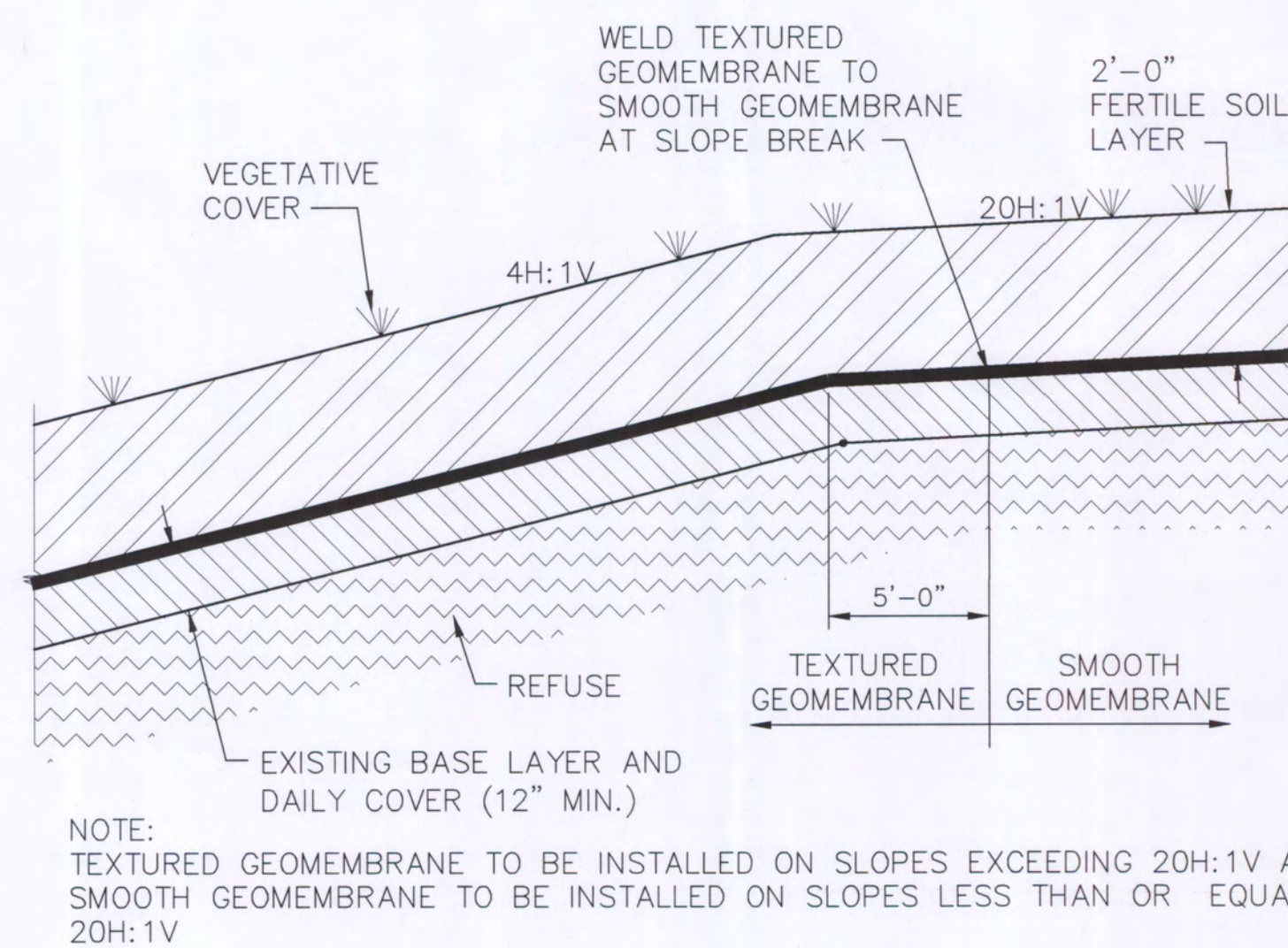
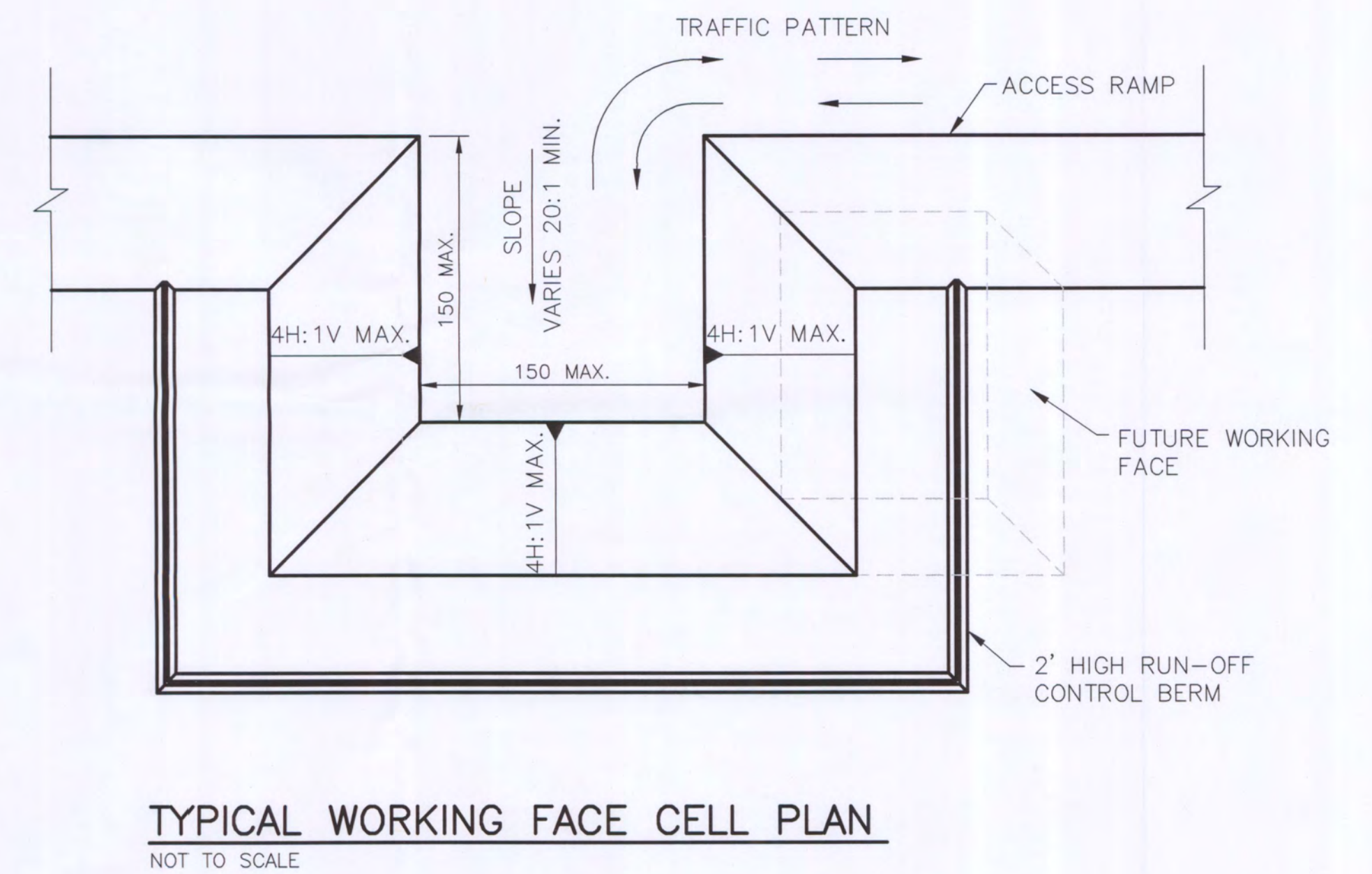
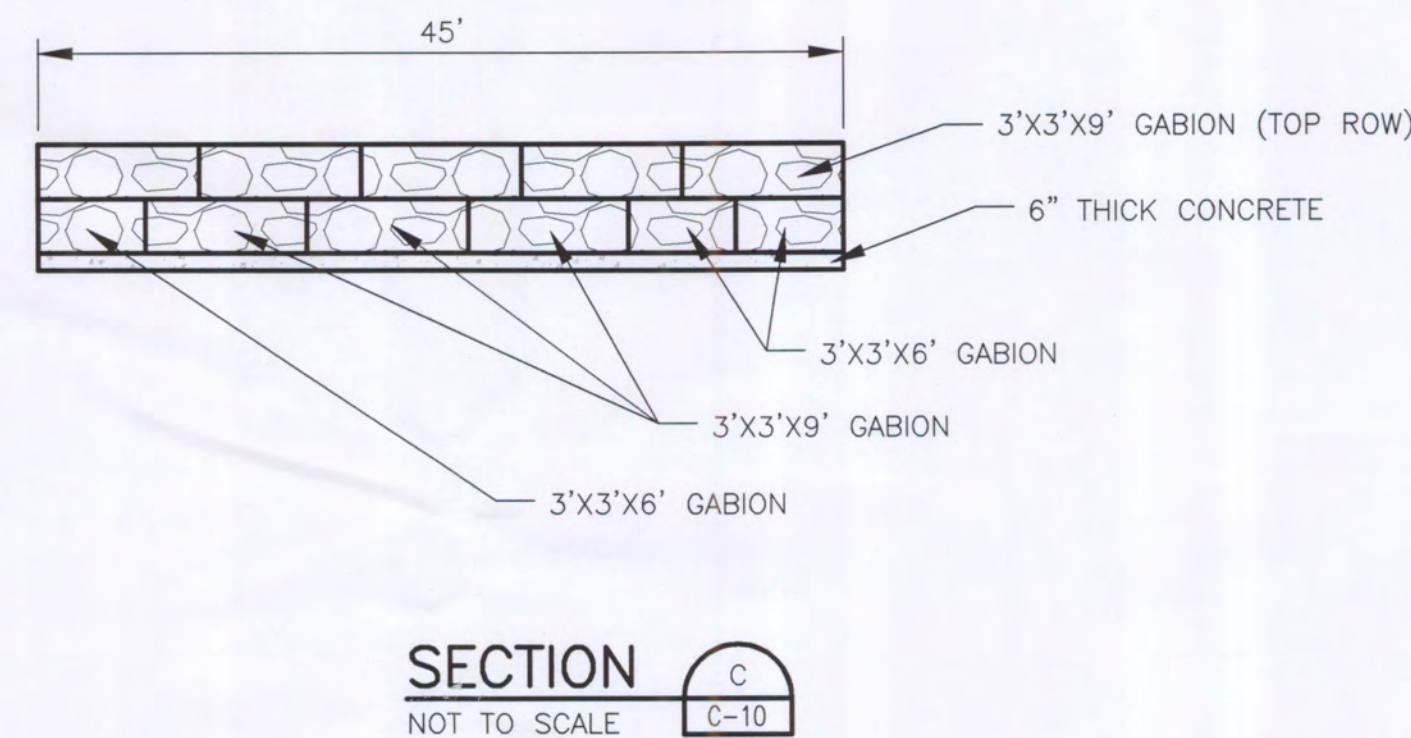
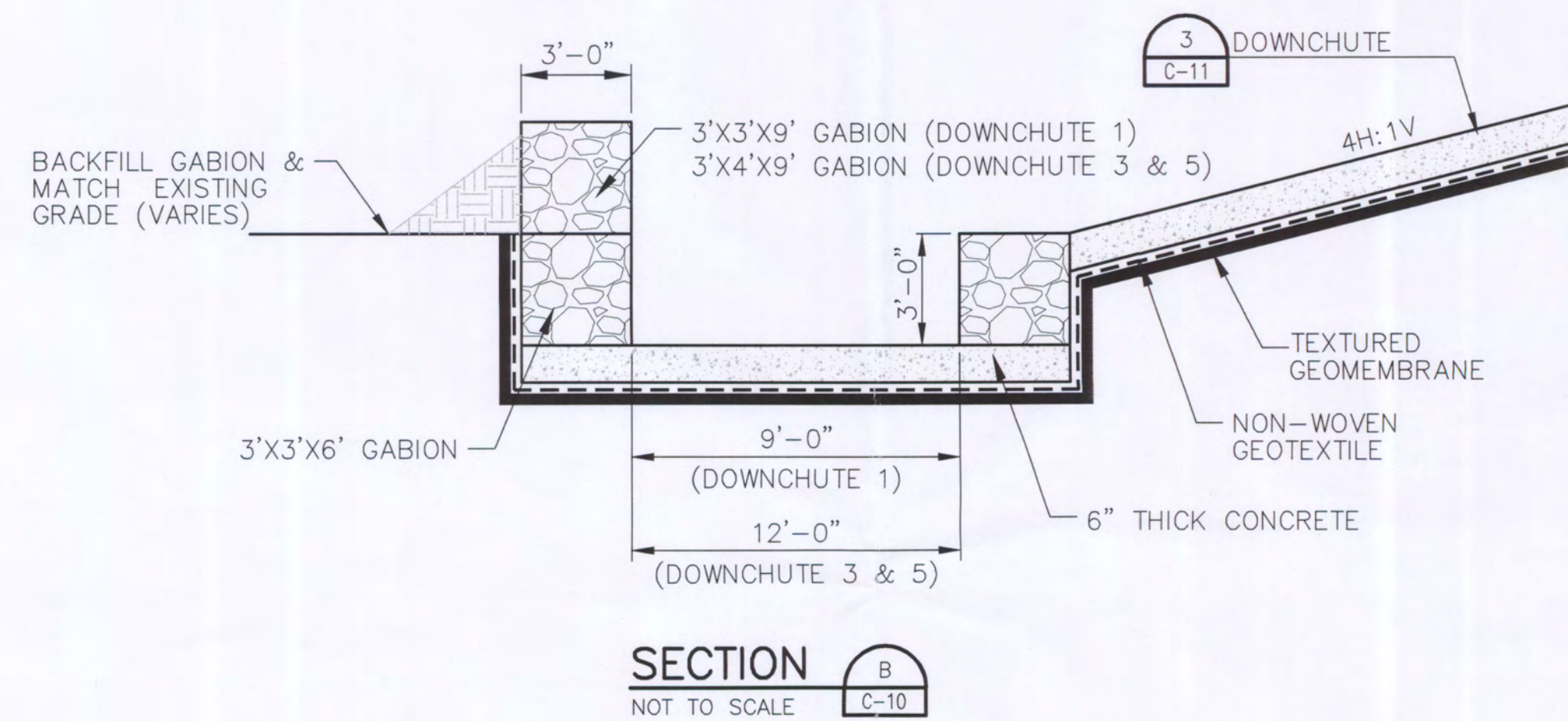
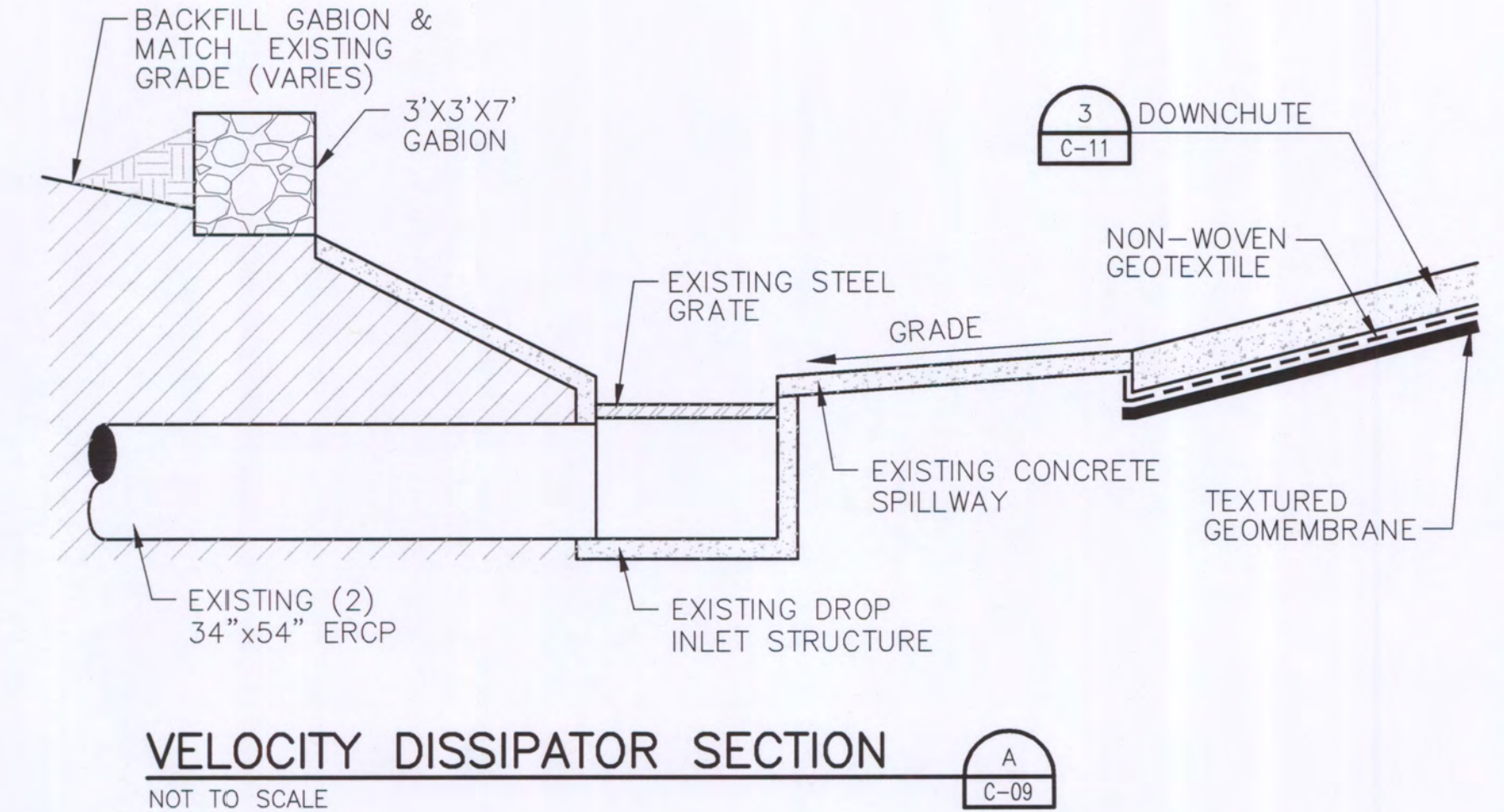
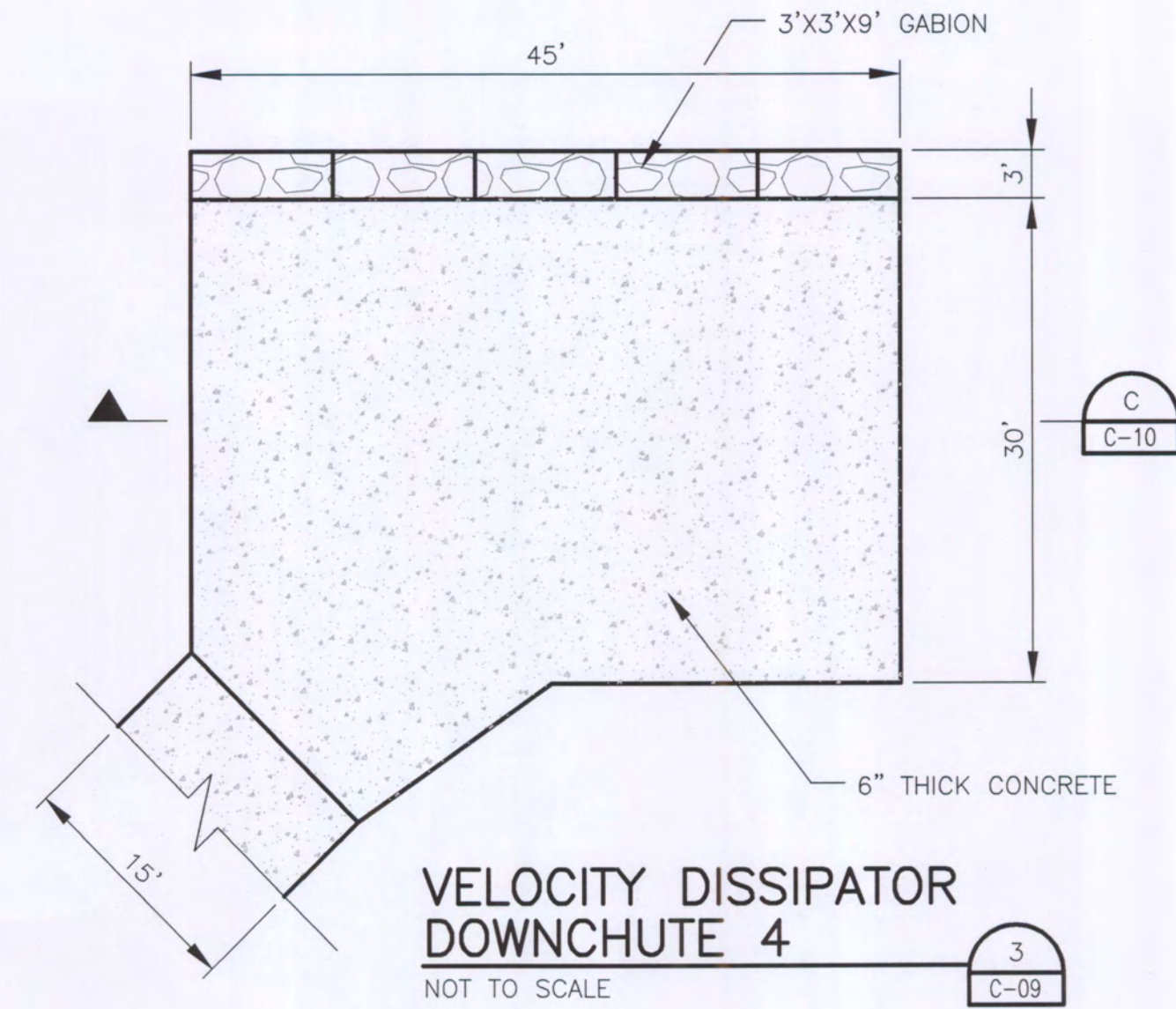
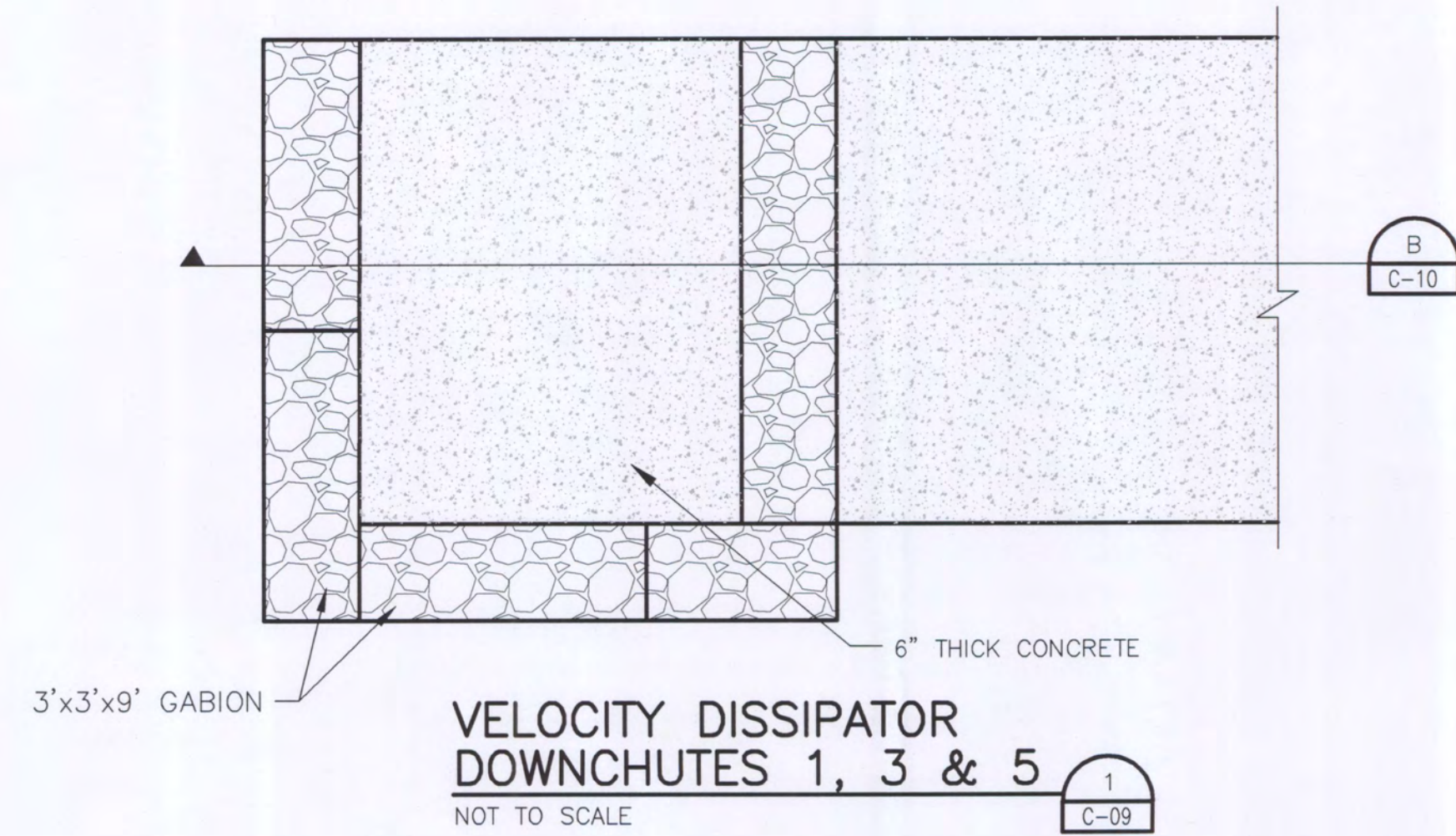
PHASES I-VI OPERATING SEQUENCE DETAILS 1



FILENAME	00C-10.DWG
SCALE	NOT TO SCALE

DWG No.	18
---------	----

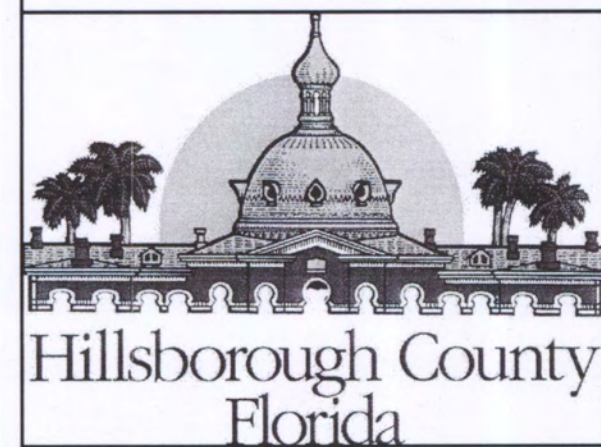
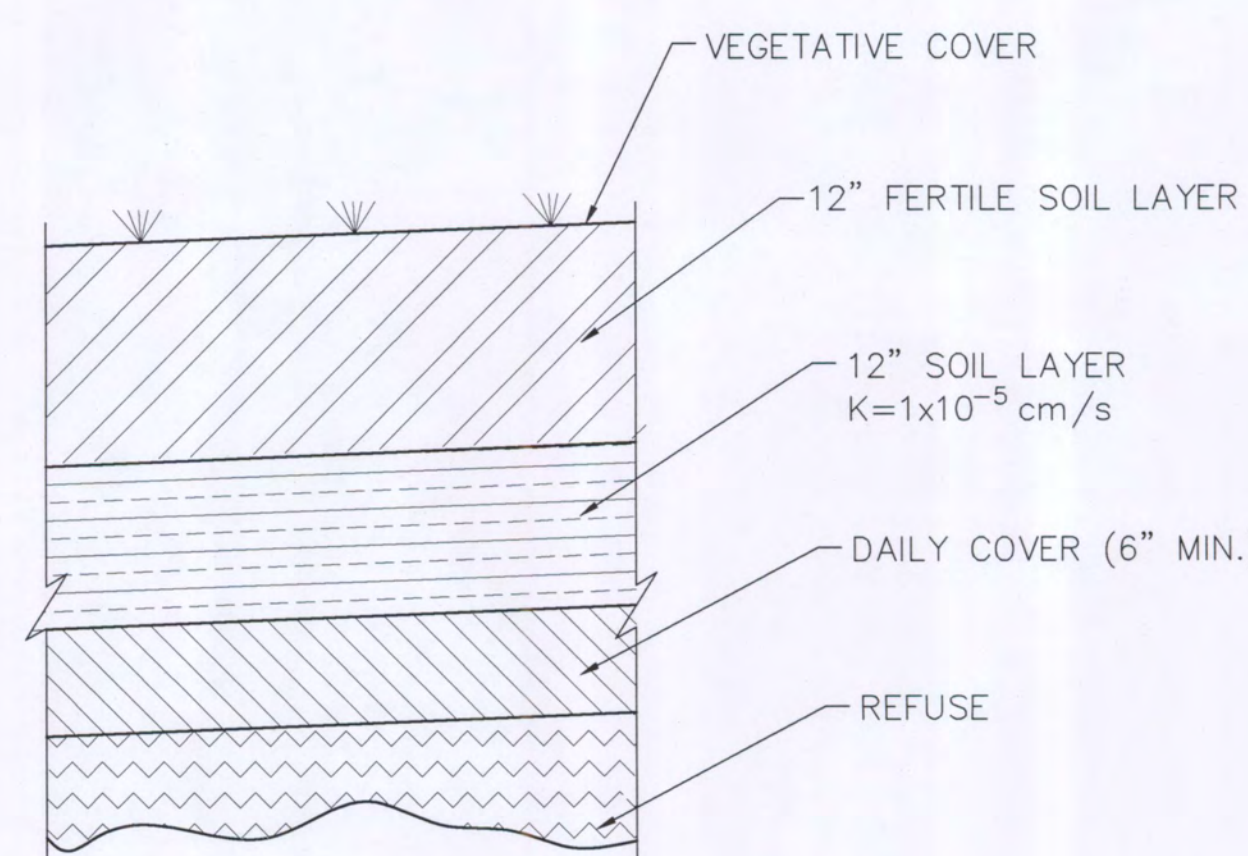
FLORIDA DEPARTMENT OF
ENVIRONMENTAL PROTECTION
FEB 20 2012
SOUTHWEST DISTRICT
TAMPA



TYPICAL GEOMEMBRANE FINAL COVER SYSTEM DETAIL

NOT TO SCALE

2 C-07 C-11



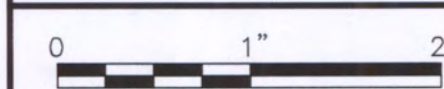
B	02/2012	FDEP RAI #1
A	12/2011	FDEP SUBMITTAL
ISSUE	DATE	DESCRIPTION

PROJECT MANAGER	R. SIEMERING
REVIEWED BY	C. RESTREPO
CIVIL DESIGN BY	J. TIMMONS
DRAWN BY	B. JOHNSON
PROJECT NUMBER	0096-171431-001



**PHASES I-VI OPERATING SEQUENCE
SOUTHEAST COUNTY LANDFILL
HILLSBOROUGH COUNTY, FLORIDA**

**PHASES I-VI OPERATING SEQUENCE
DETAILS 2**



FILENAME	00C-11.DWG
SCALE	AS SHOWN

FLORIDA DEPARTMENT OF
ENVIRONMENTAL PROTECTION
FEB 20 2012
SOUTHWEST DISTRICT
TAMPA

FINAL COVER TOE DRAIN DETAIL

NOT TO SCALE

2
C-07

TYPICAL DOWNCHUTE DETAIL

NOT TO SCALE

3
C-09

TOP SLOPE DITCH DETAIL

NOT TO SCALE

4
C-03

SERVICE HAUL ROAD SECTION

NOT TO SCALE

A
C-07

MAIN HAUL ROAD SECTION

NOT TO SCALE

B
C-07

SIDESLOPE DITCH DETAIL

NOT TO SCALE

1
C-03

NOTES:

1. GEOMEMBRANE FINAL COVER SYSTEM SHOWN.
2. SERVICE HAUL ROAD TO INCLUDE EITHER A TEMPORARY FINAL COVER OR GEOMEMBRANE FINAL COVER SYSTEM. REFER TO SHEETS C-03 TO C-07 FOR APPLICABLE COVER SYSTEM.
3. GEOMEMBRANE LINER NOT INSTALLED UNDERNEATH ACCESS ROAD.

NOTES:

1. GEOMEMBRANE FINAL COVER SYSTEM SHOWN.
2. MAIN HAUL ROAD TO INCLUDE EITHER A TEMPORARY FINAL COVER OR GEOMEMBRANE FINAL COVER SYSTEM. REFER TO SHEETS C-03 TO C-07 FOR APPLICABLE COVER SYSTEM.
3. GEOMEMBRANE LINER NOT INSTALLED UNDERNEATH ACCESS ROAD.

NOTES:

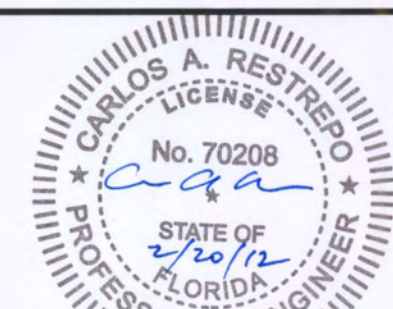
1. GEOMEMBRANE FINAL COVER SYSTEM SHOWN.
2. SIDE SLOPE DITCH TO INCLUDE EITHER A TEMPORARY FINAL COVER OR GEOMEMBRANE FINAL COVER SYSTEM. REFER TO SHEETS C-03 TO C-07 FOR APPLICABLE COVER SYSTEM.



HDR Engineering, Inc.
5426 Bay Center Drive
Suite 400
Tampa, FL 33609-3444
HDR CA# 4213

B	02/2012	FDEP RAI #1
A	12/2011	FDEP SUBMITTAL
ISSUE	DATE	DESCRIPTION

PROJECT MANAGER	R. SIEMERING
REVIEWED BY	C. RESTREPO
CIVIL DESIGN BY	J. TIMMONS
DRAWN BY	B. JOHNSON
PROJECT NUMBER	0096-171431-001

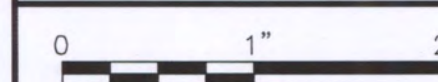


CARLOS A. RESTREPO, P.E.
CERTIFICATE NO. 70208

**PHASES I-VI OPERATING SEQUENCE
SOUTHEAST COUNTY LANDFILL
HILLSBOROUGH COUNTY, FLORIDA**

PHASES I-VI OPERATING SEQUENCE

DETAILS 3



FILENAME	OOC-12.DWG
SCALE	AS SHOWN

DWG No.

0 \triangle B