

February 27, 2012

Mr. Steven G. Morgan  
Solid Waste Section  
Department of Environmental Protection  
13051 North Telecom Parkway  
Temple Terrace, Florida 33637-0926

Dept. Of Environmental Protection  
FEB 27 2012  
Southwest District

Subject: Operations Permit Minor Modification Application  
Phases I-VI and Capacity Expansion Area (Sections 7, 8, and 9)  
Revised Fill Sequences 13 through 15 at the Capacity Expansion Area  
Hillsborough County Southeast County Landfill  
FDEP Permit No. 35435-014-SO/01  
FDEP ID No. SWD/29/41193

Dear Mr. Morgan:

As discussed and on behalf of Hillsborough County Public Utilities Department, Solid Waste Management Group, HDR Engineering, Inc. hereby submits revised Fill Sequences 13 through 15 at the Capacity Expansion Area Sections 7, 8, and 9 at the Southeast County Landfill as part of the Operations Permit Minor Modification Application.

During the submittal of the Operations Permit Minor Modification Application on December 27, 2011 and the Response to Request for Additional Information (RAI) No. 1 on February 20, 2012, HDR inadvertently presented incorrect Fill Sequences 13 through 15 at the Capacity Expansion Area. The enclosed revised Sheet Drawing 8 presents the correct Fill Sequences 13 through 15 where filling operations begin on the north slope of Section 9. No other changes were made to the Capacity Expansion Area Sections 7, 8, and 9 – Operating Sequence Drawings since the submittal of the responses to RAI No. 1.

If you have any questions or need clarification regarding the enclosed information, please contact me at (813) 262-2731.

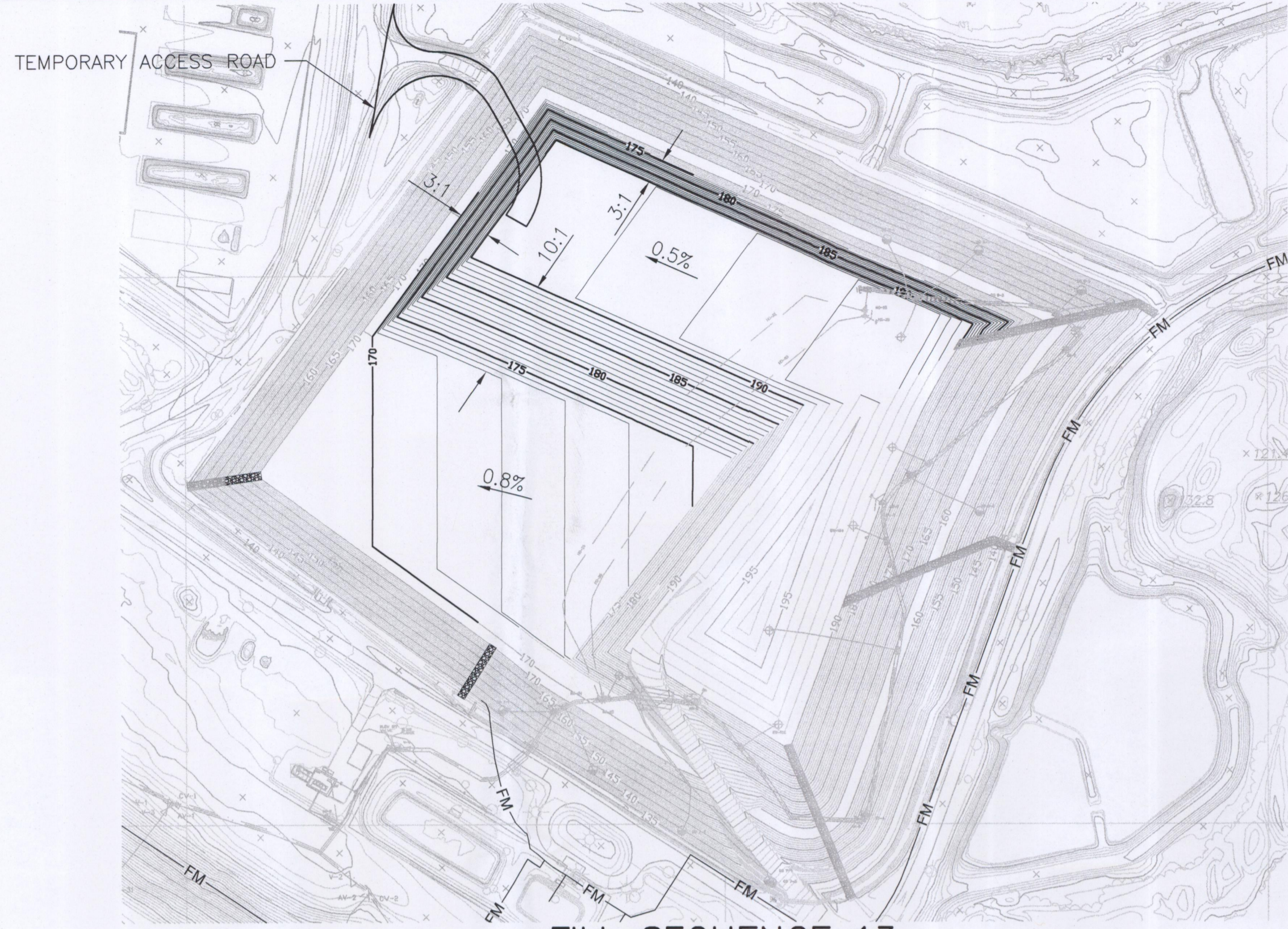
Sincerely,  
**HDR ENGINEERING, INC.**

Carlos A. Restrepo, P.E.  
Sr. Project Engineer

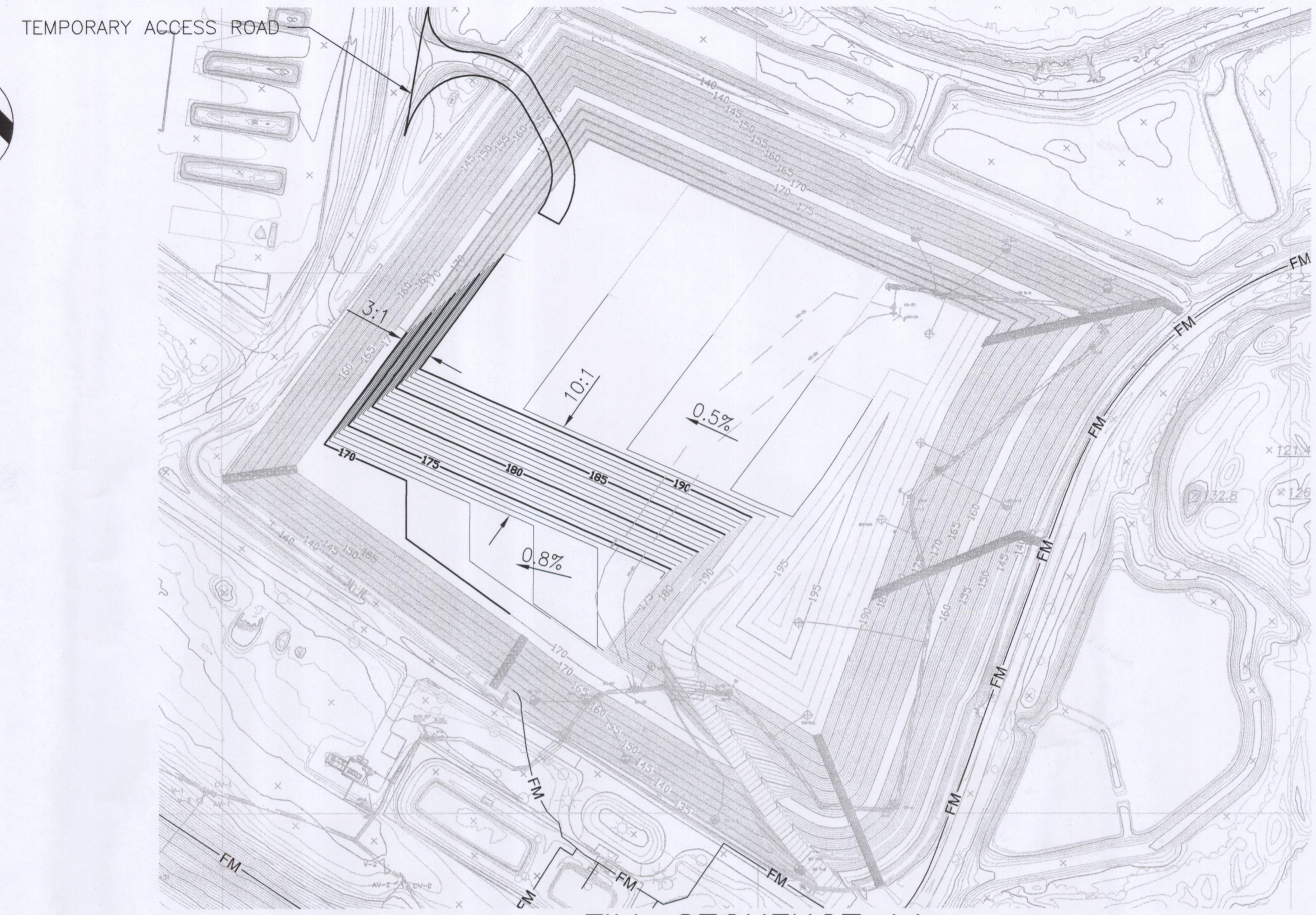
Richard A. Siemering  
Solid Waste Section Manager

cc: Patricia V. Berry, PUD  
Megan J. Miller, PUD  
Larry E. Ruiz, PUD

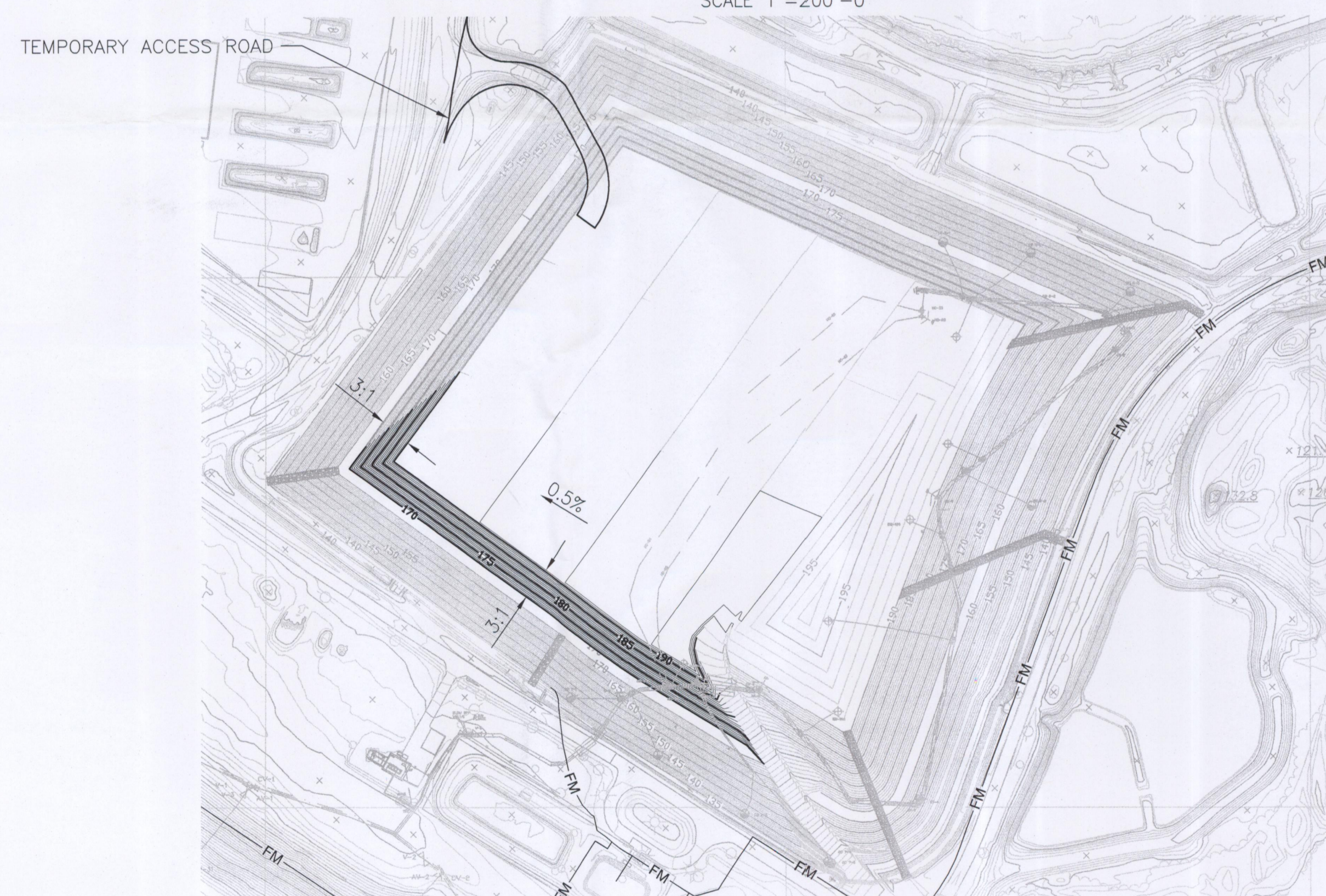




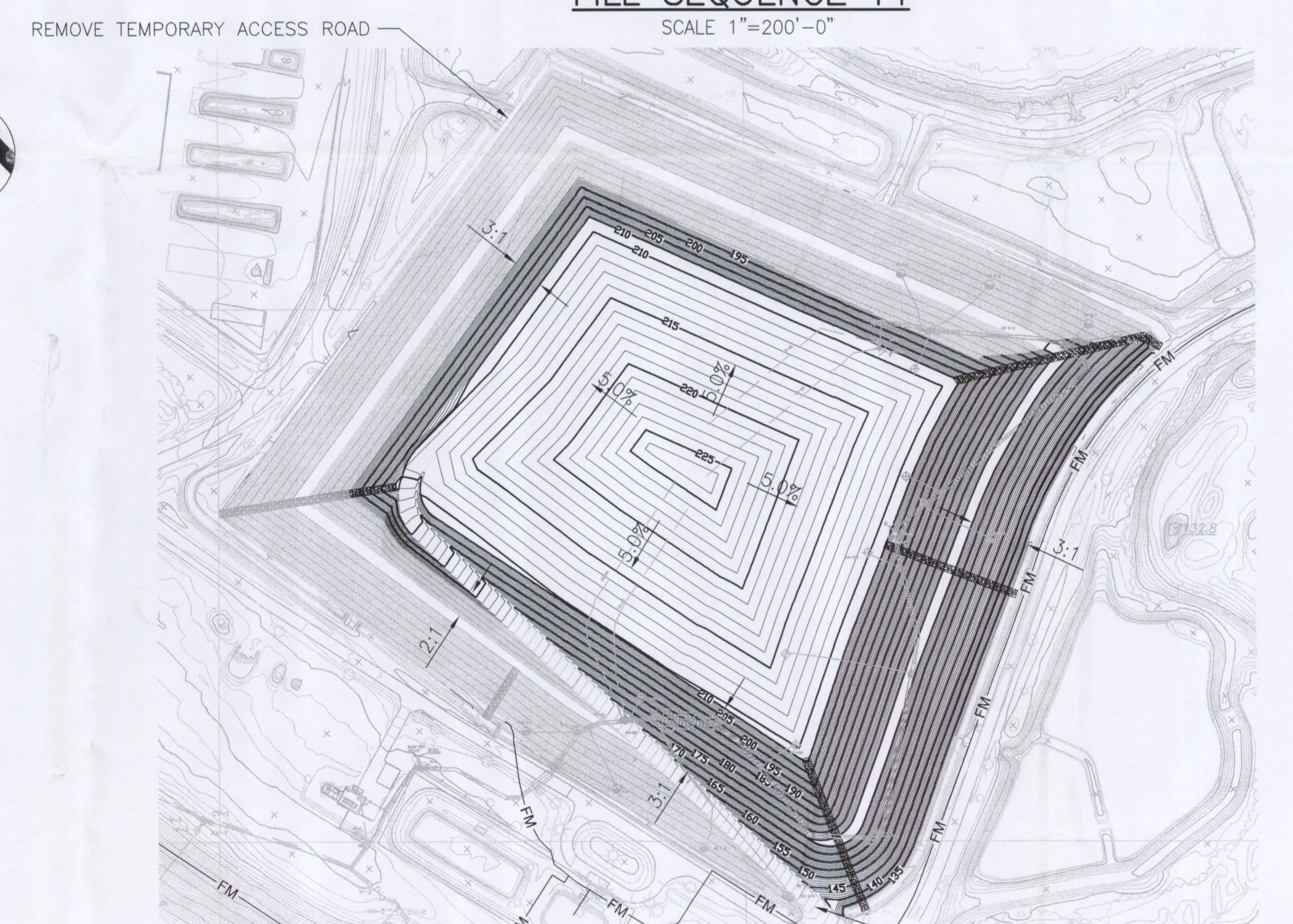
**FILL SEQUENCE 13**  
SCALE 1"=200'-0"



**FILL SEQUENCE 14**  
SCALE 1"=200'-0"



**FILL SEQUENCE 15**  
SCALE 1"=200'-0"

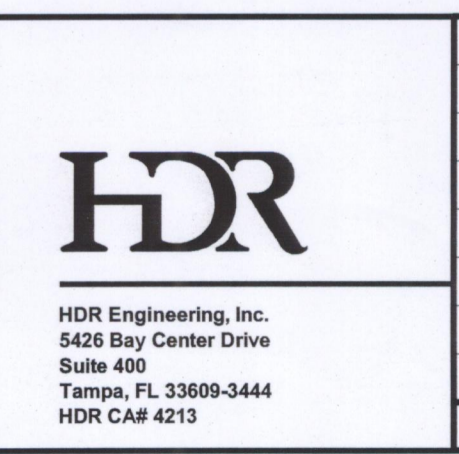
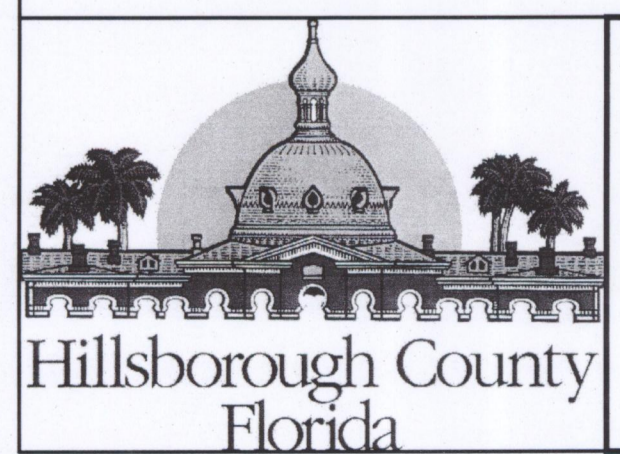


**FILL SEQUENCE 16**  
SCALE 1"=200'-0"



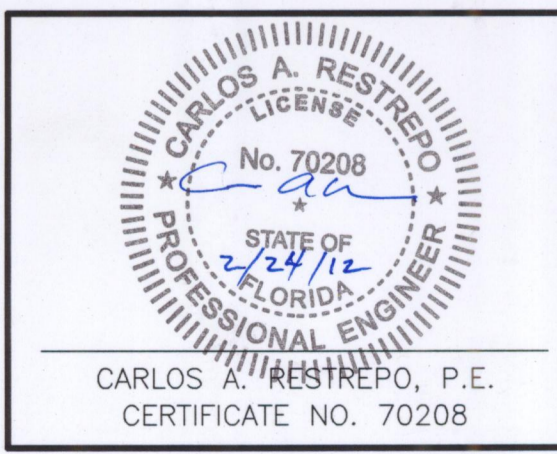
NOTE:  
LOCATION OF ACCESS  
ROAD TO VARY WITH  
OPERATIONS

FLORIDA DEPARTMENT OF  
ENVIRONMENTAL PROTECTION  
FEB 2, 2012  
SOUTHWEST DISTRICT  
TAMPA



ISSUE	DATE	DESCRIPTION
B	02/2012	FDEP RAI #1
A	12/2011	FDEP SUBMITTAL

PROJECT MANAGER	R. SIEMERING
REVIEWED BY	C. RESTREPO
CIVIL DESIGN BY	J. TIMMONS
DRAWN BY	B. JOHNSON
PROJECT NUMBER	0096-171431-001



**CAPACITY EXPANSION AREA  
SECTIONS 7, 8 AND 9  
OPERATING SEQUENCE  
SOUTHEAST COUNTY LANDFILL  
HILLSBOROUGH COUNTY, FLORIDA**

**SECTIONS 7, 8 AND 9 OPERATING SEQUENCE  
FILL SEQUENCE 13 TO 16**

0 1" 2"

FILENAME	0844902101-C08-SEQ-13_16.DWG	DWG No.	8
SCALE	AS SHOWN		

C:\working\0844902101-C08-SEQ-13\_16.DWG, FILL SEQ SHEET 5, SEQ 13 THRU 16, 2/24/2012 2:11:59 PM, bmadam