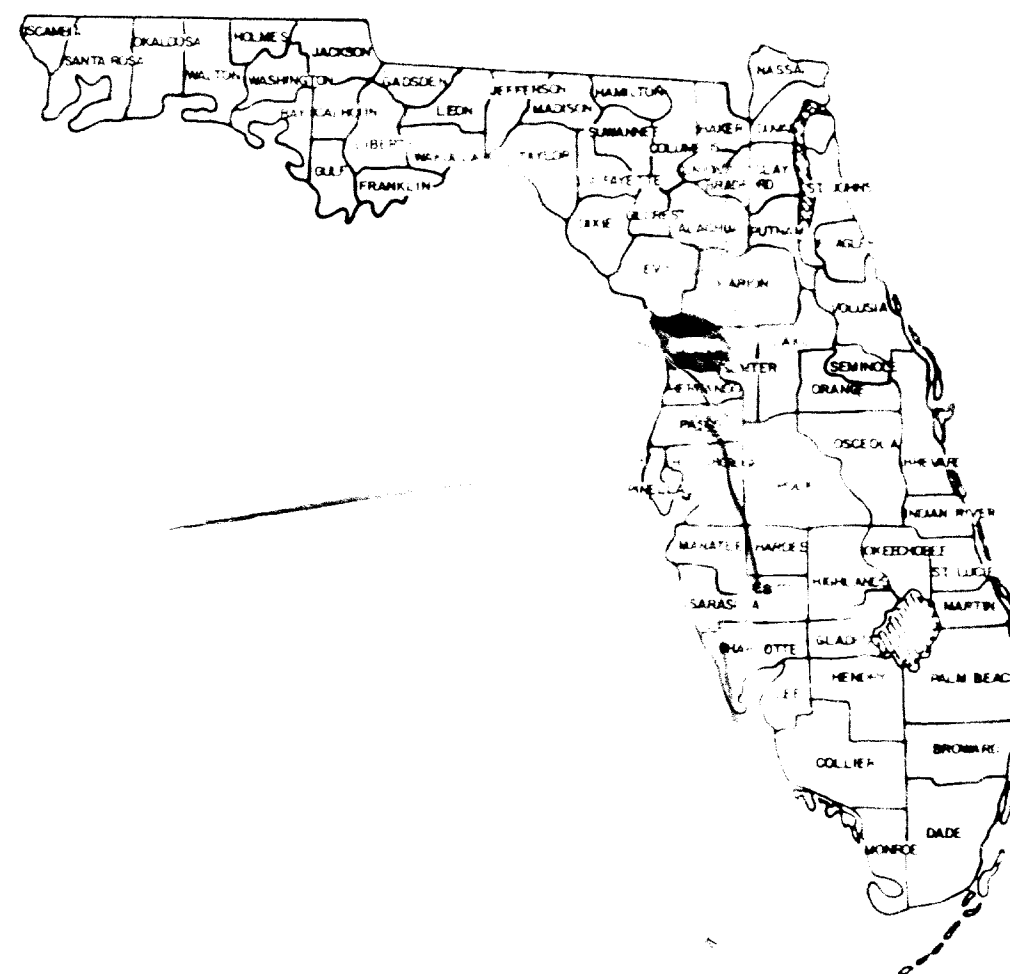
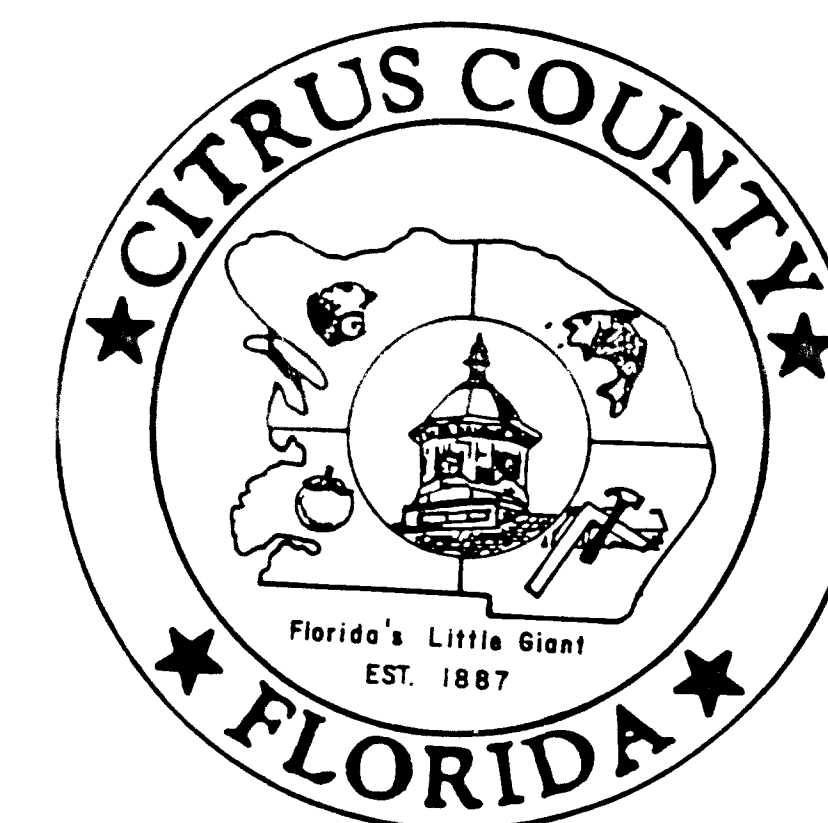
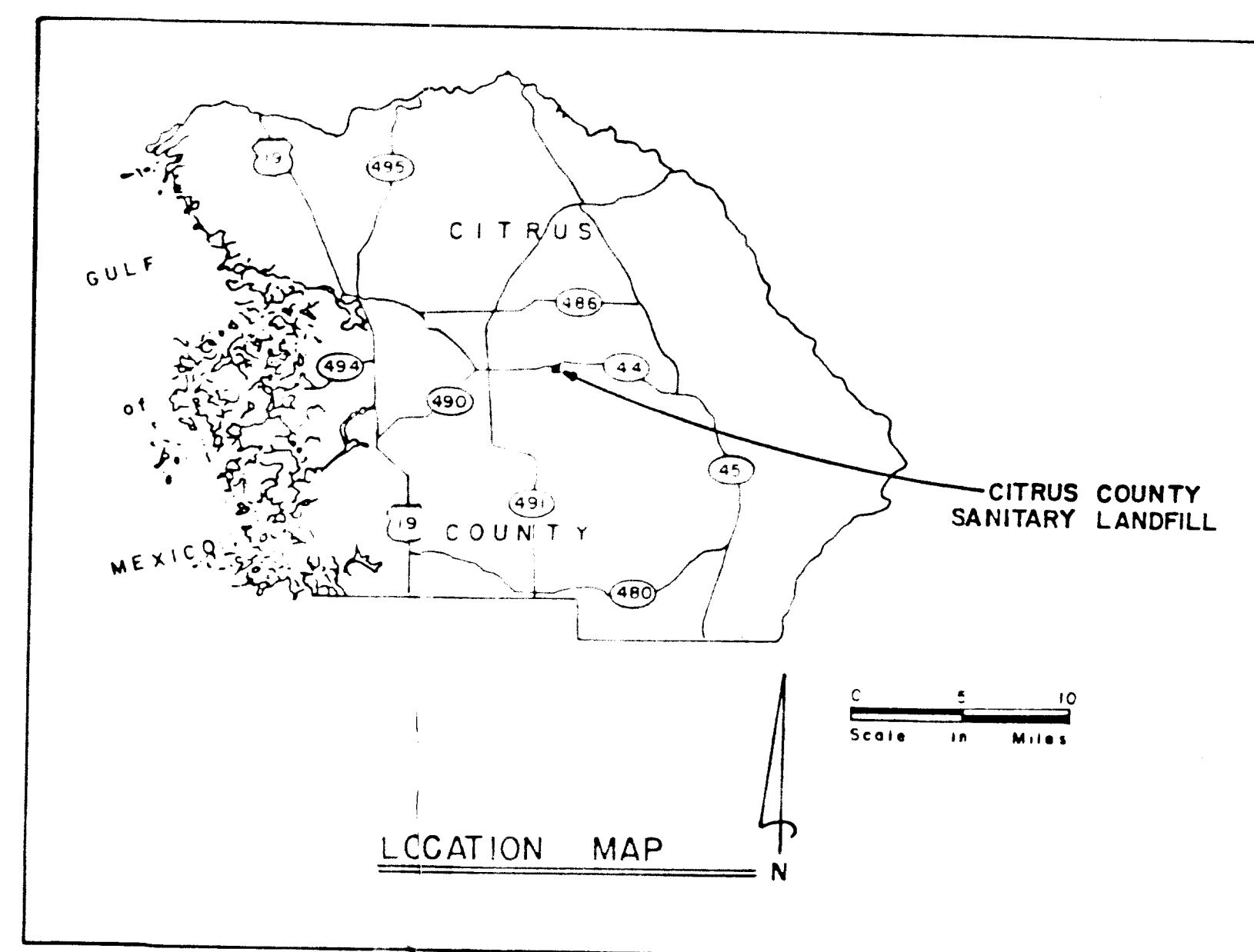


CITRUS COUNTY 60 ACRE SANITARY LANDFILL CLOSURE PLAN



PHASE I
APPROX. 25 Acres



COUNTY COMMISSIONERS

SKIP HUDSON, CHAIRMAN
WILBUR LANGLEY, 1st VICE CHAIRMAN
WAYNE WEAVER, 2nd VICE CHAIRMAN
NICK BRYANT, COMMISSIONER
HANK COHEN, COMMISSIONER

COUNTY ADMINISTRATOR

CHRISTOPHER W. CHINAULT

COUNTY ENGINEER

JAMES W. PINKERTON

INDEX OF SHEETS

1. TITLE PAGE
2. OVERALL SITE GRADING PLAN
3. GRADING PLAN AREA I
4. GRADING PLAN AREA II
5. GRADING PLAN AREA III
6. GRADING PLAN AREA IV
7. DETAILS
8. DETAILS

PREPARED BY:

CITRUS COUNTY
DEPARTMENT OF TECHNICAL SERVICES
ENGINEERING DIVISION

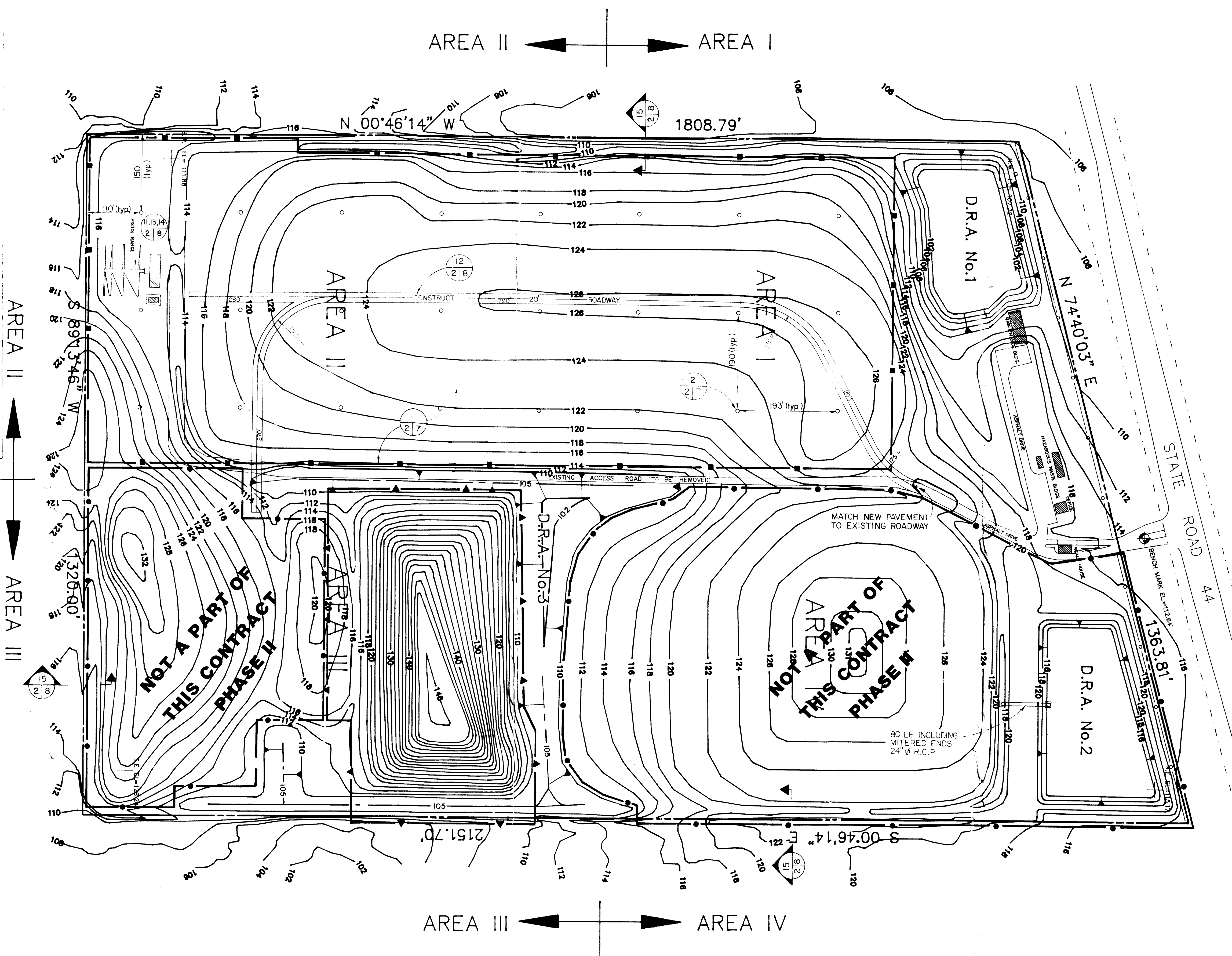
5089-111795
4009000086
W-0539859




IMAGE QUALITY

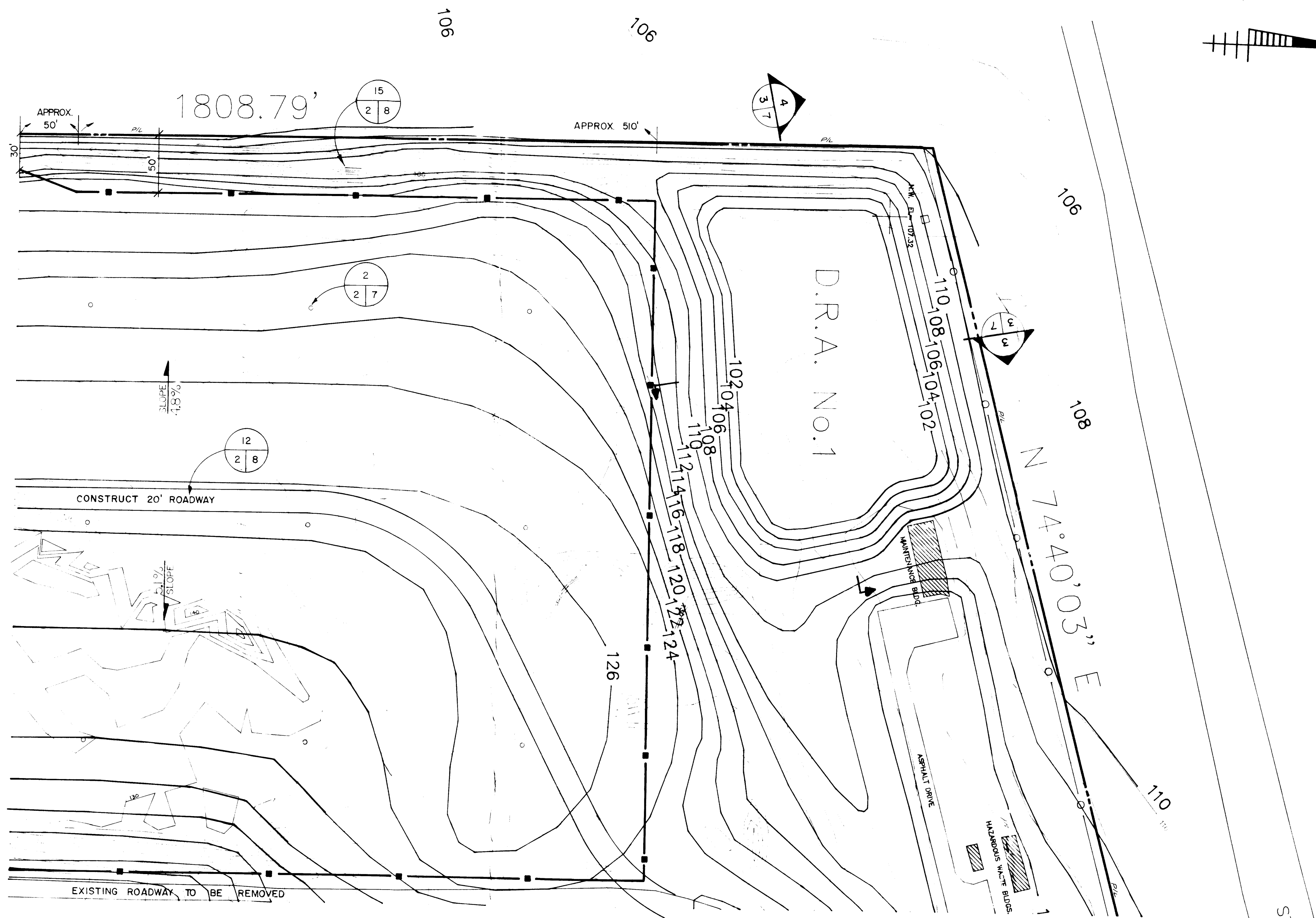
AS YOU VIEW THE FOLLOWING
DOCUMENT, PLEASE NOTE THAT
PORTIONS OF THE ORIGINAL WERE OF
POOR QUALITY

LEGEND	
SYMBOL	DESCRIPTION
	PROPOSED CONTOUR AND ELEVATION. ELEVATION RELATIVE TO NGVD-29, DERIVED FROM F.T.C.T. BENCHMARK
	EXISTING CONTOUR (SHEET N° 3 thru 6)
$\begin{matrix} N 3390.67 \\ E 3727.72 \end{matrix}$	ASSUMED COORDINATES
	GROUND TARGET
	PROPERTY BOUNDARY
	EXISTING STRUCTURE
	SECTION AND DETAIL DESIGNATION
	SHEET N° WHERE SECTION/DETAIL IS SHOWN
	SHEET N° WHERE SECTION/DETAIL IS FIRST INDICATED
	CULVERT W. MITERED ENDS
	SLOPE
	RETENTION AREA
	PROPOSED SPOT ELEVATION
	EXISTING SPOT ELEVATION
	APPROXIMATE BOUNDARY OF AREAS THAT ARE NOT A PART OF THE CONTRACT
	LIMITS OF 30 mil PVC LINER
	APPROXIMATE BOUNDARY OF AREAS FOR SOLID WASTE RELOCATION
	GAS VENTILATION STRUCTURE



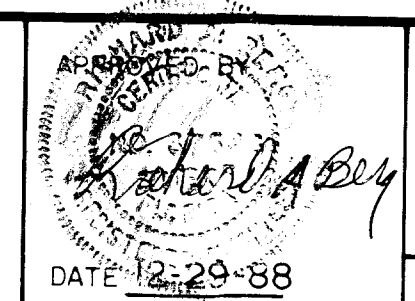
RECEIVED
JAN 09 1989
WASTE MANAGEMENT

REVISIONS										PRELIMINARY		DESIGN		DEPARTMENT OF TECHNICAL SERVICES CITRUS COUNTY, FLORIDA ENGINEERING DIVISION		60 Acre Sanitary Landfill Closure			PROJECT NUMBER	SHEET
BY		BY		BY			BY	DATE	BY	DATE	SCALE	1" = 100'	FILE:							
DATE		DATE		DATE		DRAWN														
DATE		DATE		DATE		DESIGNED														
						CHECKED					SECTION	TOWNSHIP	RANGE							



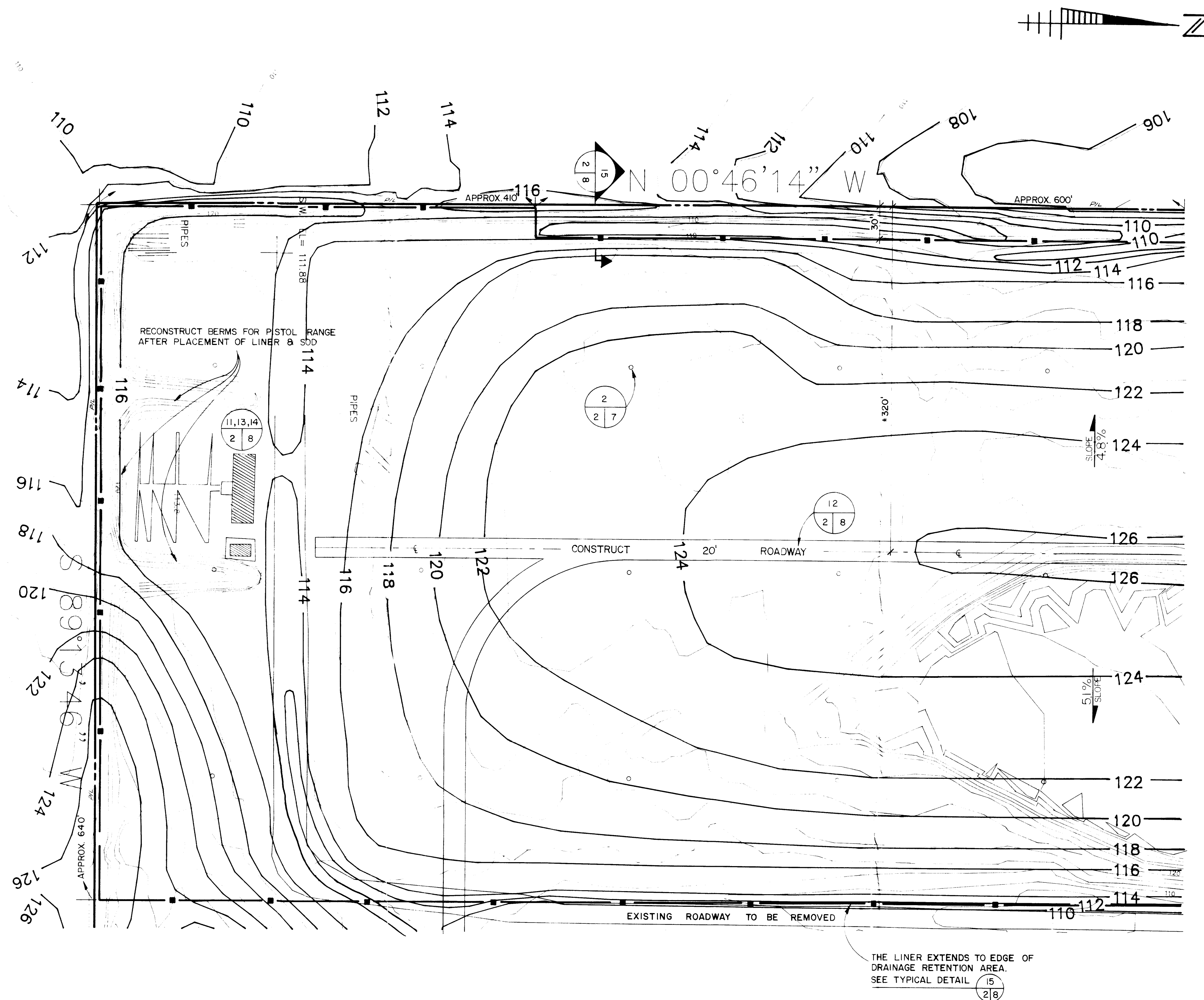
REVISIONS						PRELIMINARY		DESIGN	
BY		BY		BY		BY	DATE	BY	DATE
DATE		DATE		DATE		DATE		DATE	
BY		BY		BY		DRAWN			
DATE		DATE		DATE		DESIGNED			
						CHECKED			

DEPARTMENT OF TECHNICAL SERVICES
CITRUS COUNTY, FLORIDA
ENGINEERING DIVISION

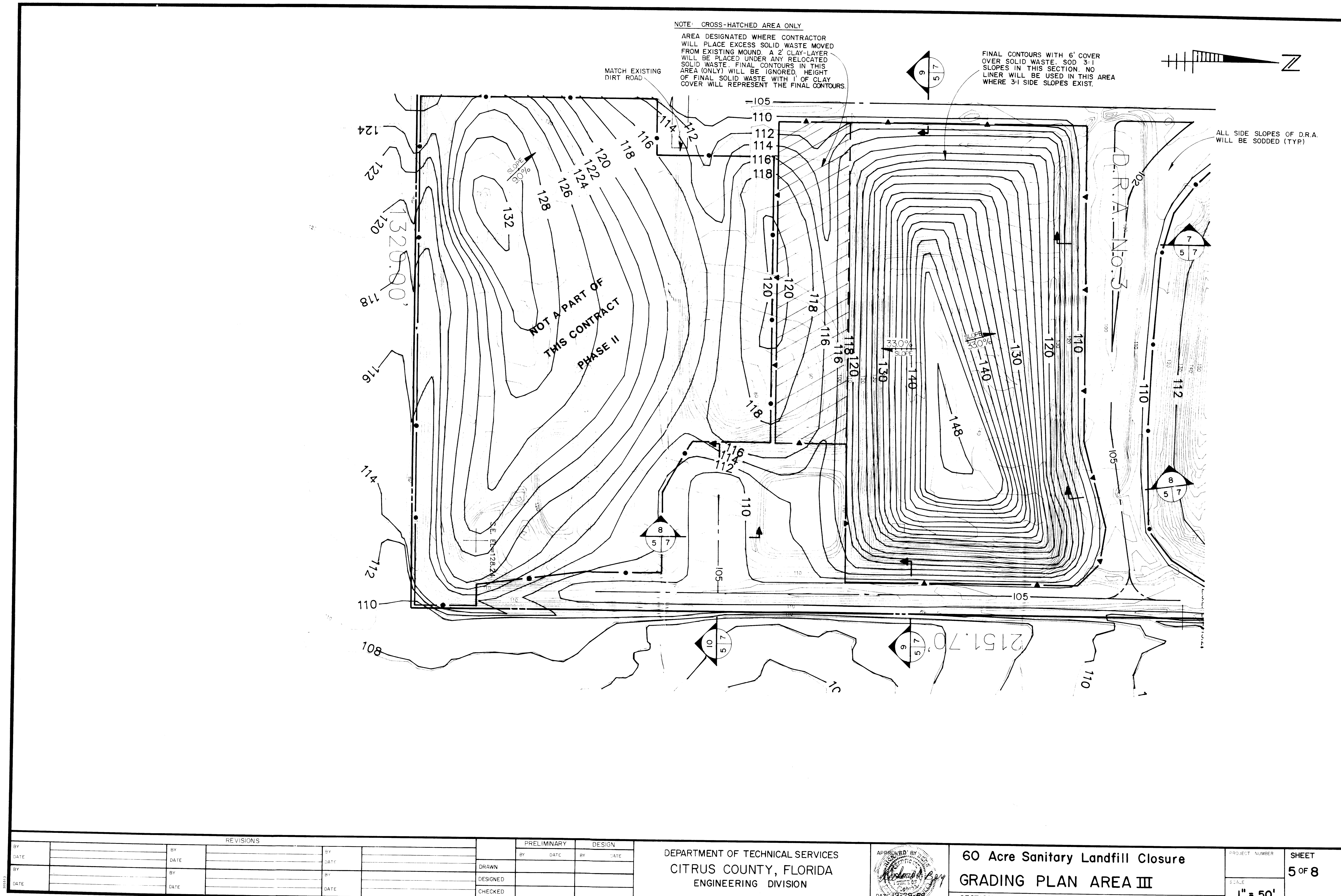


60 Acre Sanitary Landfill Closure
GRADING PLAN AREA I

PROJECT NUMBER
SCALE
1" = 50'
SHEET
3 OF 8
FILE



REVISIONS						PRELIMINARY		DESIGN		DEPARTMENT OF TECHNICAL SERVICES CITRUS COUNTY, FLORIDA ENGINEERING DIVISION		APPROVED DATE 12-29-88		PROJECT NUMBER		SHEET 4 OF 8	
BY		BY		BY		BY		BY									
DATE		DATE		DATE		DATE		DATE									
BY		BY		BY		BY		BY									
DATE		DATE		DATE		DATE		DATE		SECTION _____ TOWNSHIP _____ RANGE _____		SCALE 1" = 50'		FILE: _____			



NOTE: CROSS-HATCHED AREA ONLY

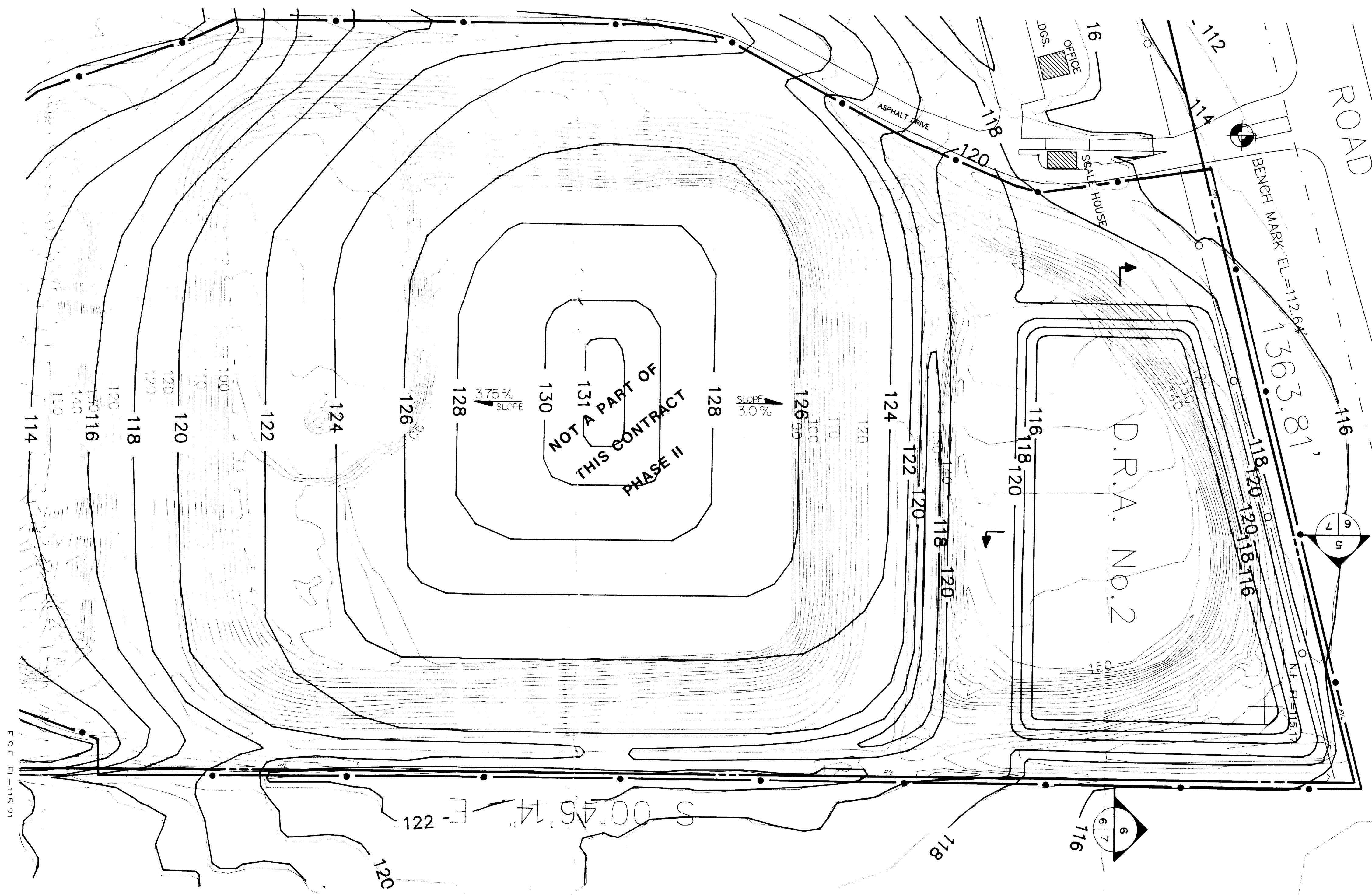
AREA DESIGNATED WHERE CONTRACTOR WILL PLACE EXCESS SOLID WASTE MOVED FROM EXISTING MOUND. A 2' CLAY-LAYER WILL BE PLACED UNDER ANY RELOCATED SOLID WASTE. FINAL CONTOURS IN THIS AREA (ONLY) WILL BE IGNORED. HEIGHT OF FINAL SOLID WASTE WITH 1' OF CLAY COVER WILL REPRESENT THE FINAL CONTOURS.

FINAL CONTOURS WITH 6' COVER OVER SOLID WASTE. SOD 3:1 SLOPES IN THIS SECTION. NO LINER WILL BE USED IN THIS AREA WHERE 3:1 SIDE SLOPES EXIST.

ALL SIDE SLOPES OF D.R.A. WILL BE SODDED (TYP)

NOT A PART OF
THIS CONTRACT
PHASE II

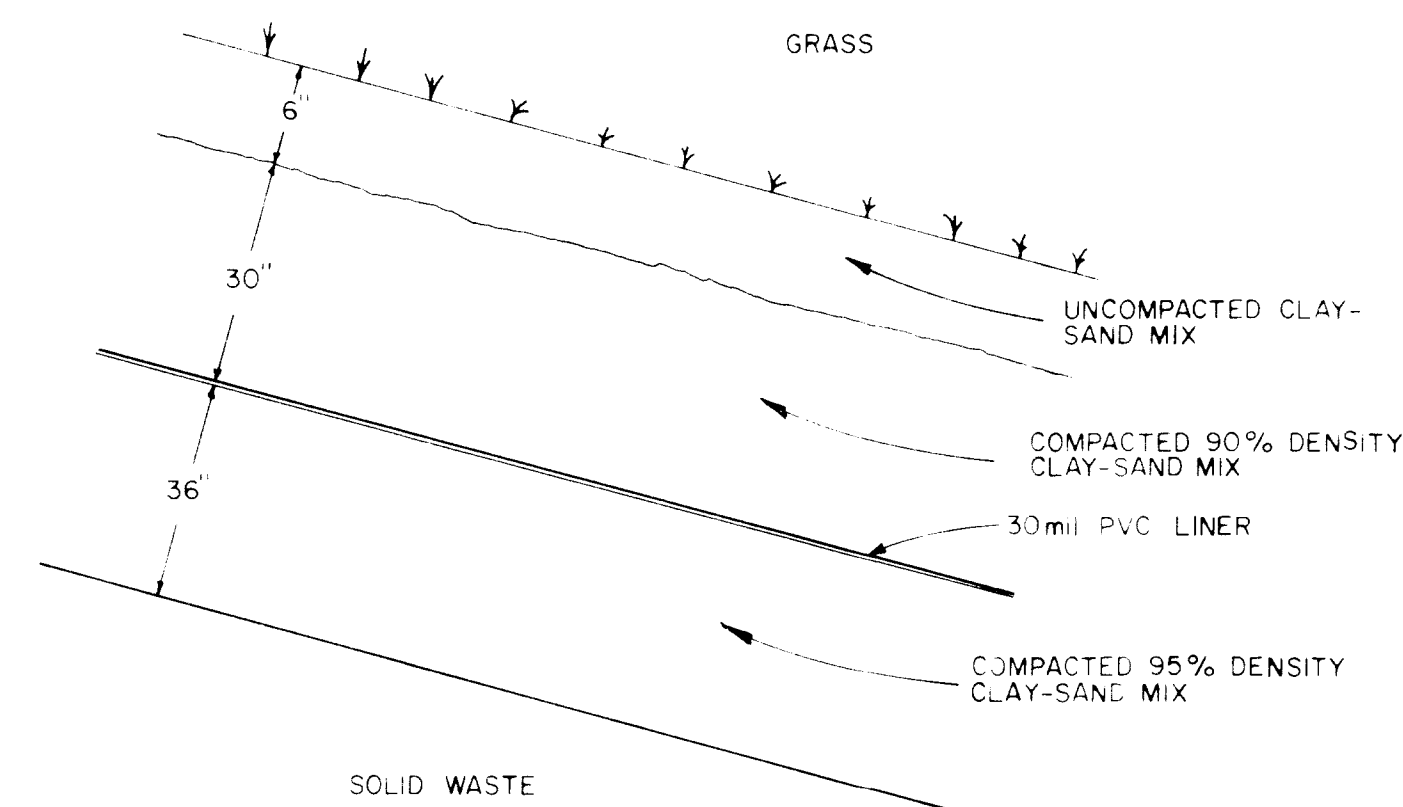
REVISIONS				PRELIMINARY		DESIGN		DEPARTMENT OF TECHNICAL SERVICES CITRUS COUNTY, FLORIDA ENGINEERING DIVISION		60 Acre Sanitary Landfill Closure		PROJECT NUMBER	SHEET
BY	DATE	BY	DATE	BY	DATE	BY	DATE			SCALE	5 OF 8		
BY	DATE	BY	DATE	BY	DATE	BY	DATE			1" = 50'	FILE		
BY	DATE	BY	DATE	BY	DATE	BY	DATE						
								SECTION	TOWNSHIP	RANGE			



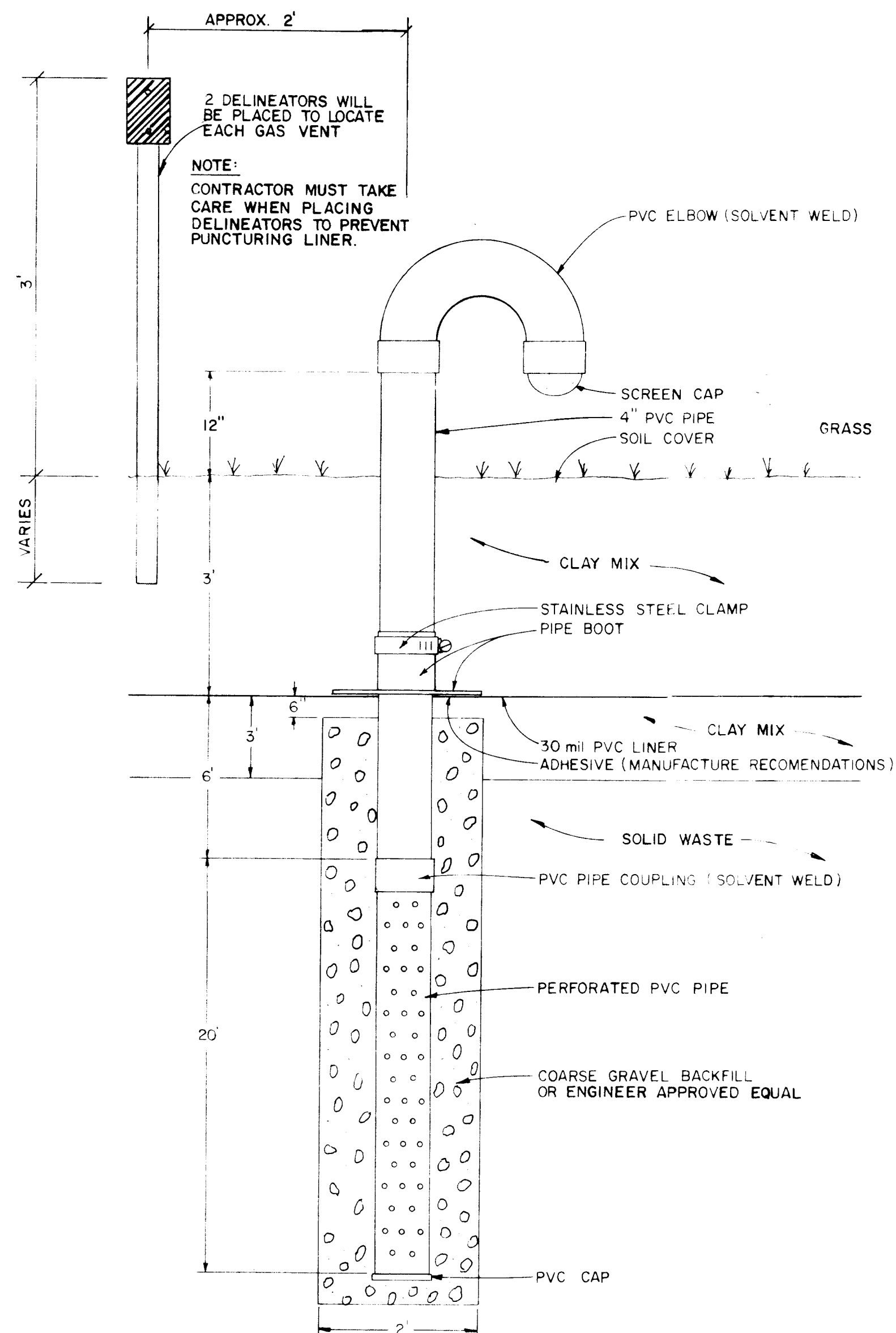
REVISIONS				PRELIMINARY		DESIGN		DEPARTMENT OF TECHNICAL SERVICES CITRUS COUNTY, FLORIDA ENGINEERING DIVISION		60 Acre Sanitary Landfill Closure GRADING PLAN AREA IV		PROJECT NUMBER		SHEET	
BY	DATE	BY	DATE	BY	DATE	BY	DATE	BY	DATE	SECTION	TOWNSHIP	RANGE	SCALE	FILE	6 OF 8
													1" = 50'		

APPROVED BY: *Robert A. Bay*

DATE: 12-20-88

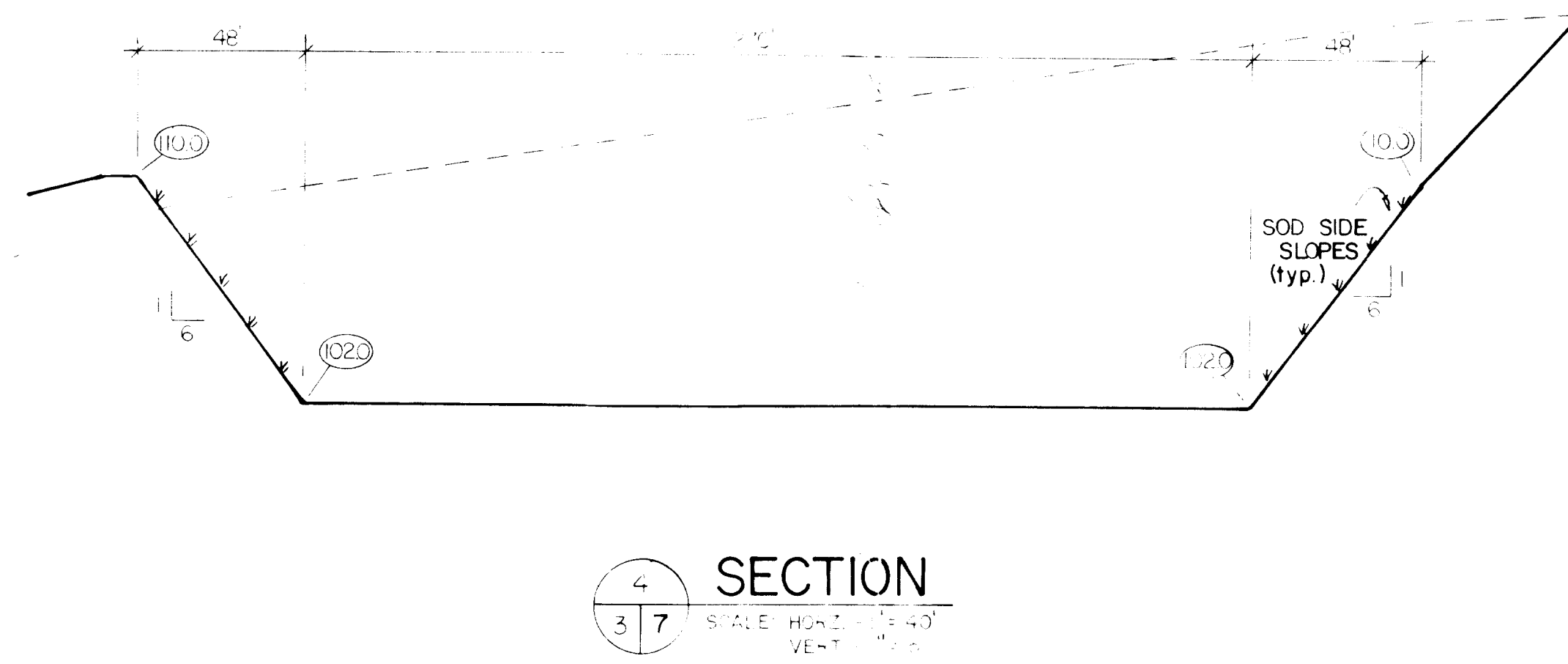
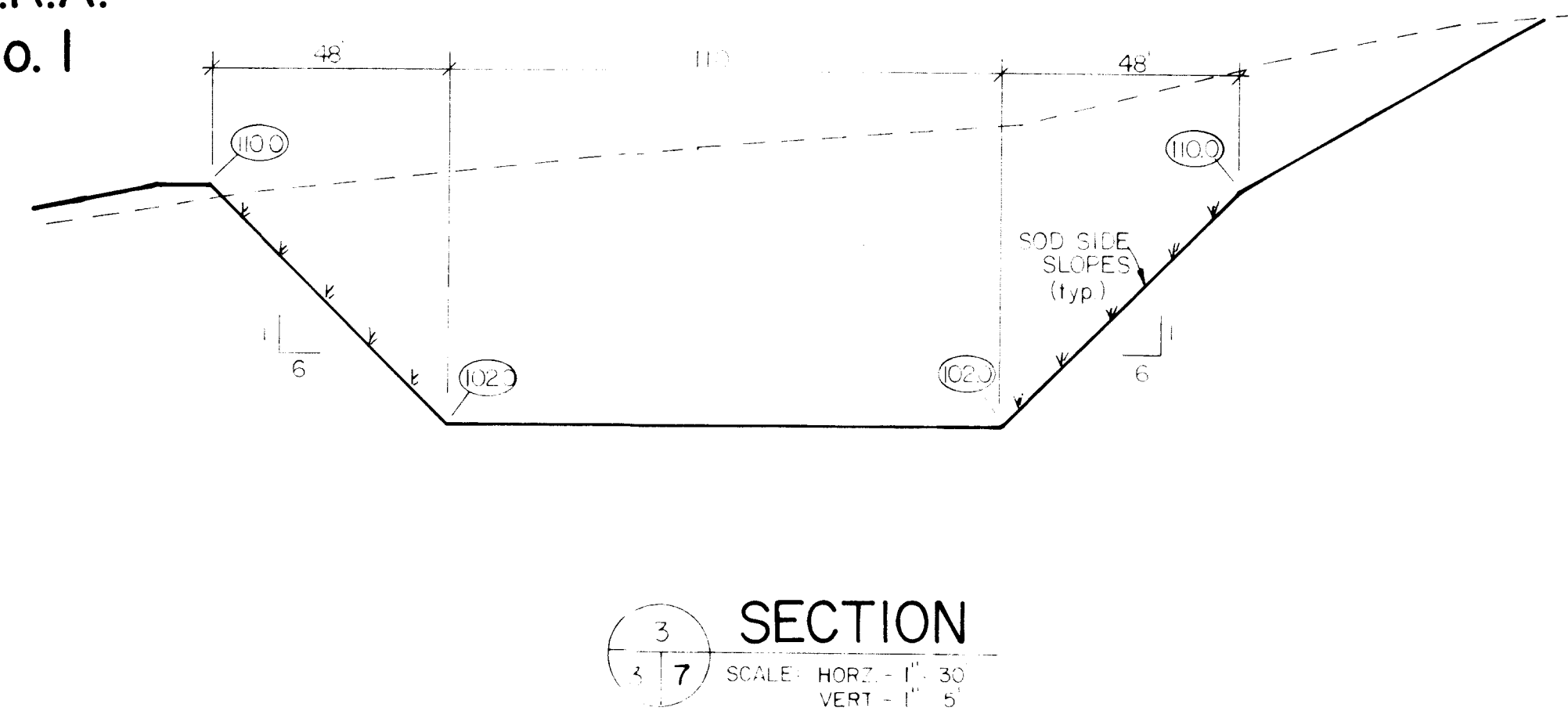


1
2 7 FINAL COVER DETAIL
N.T.S.

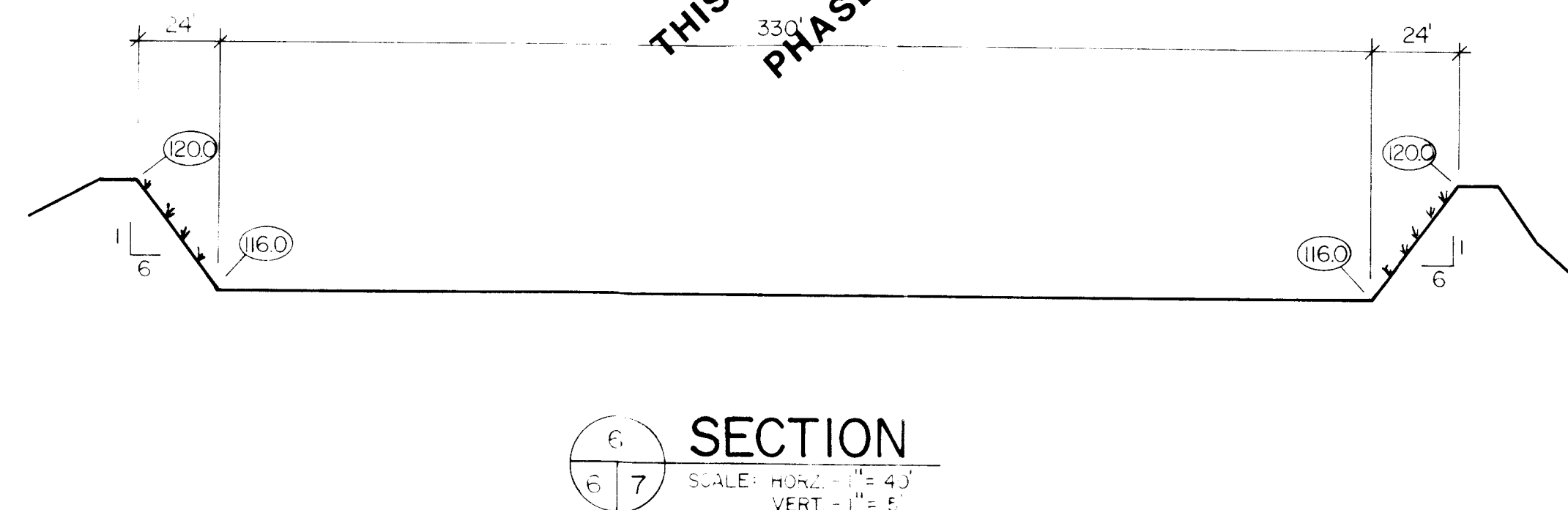
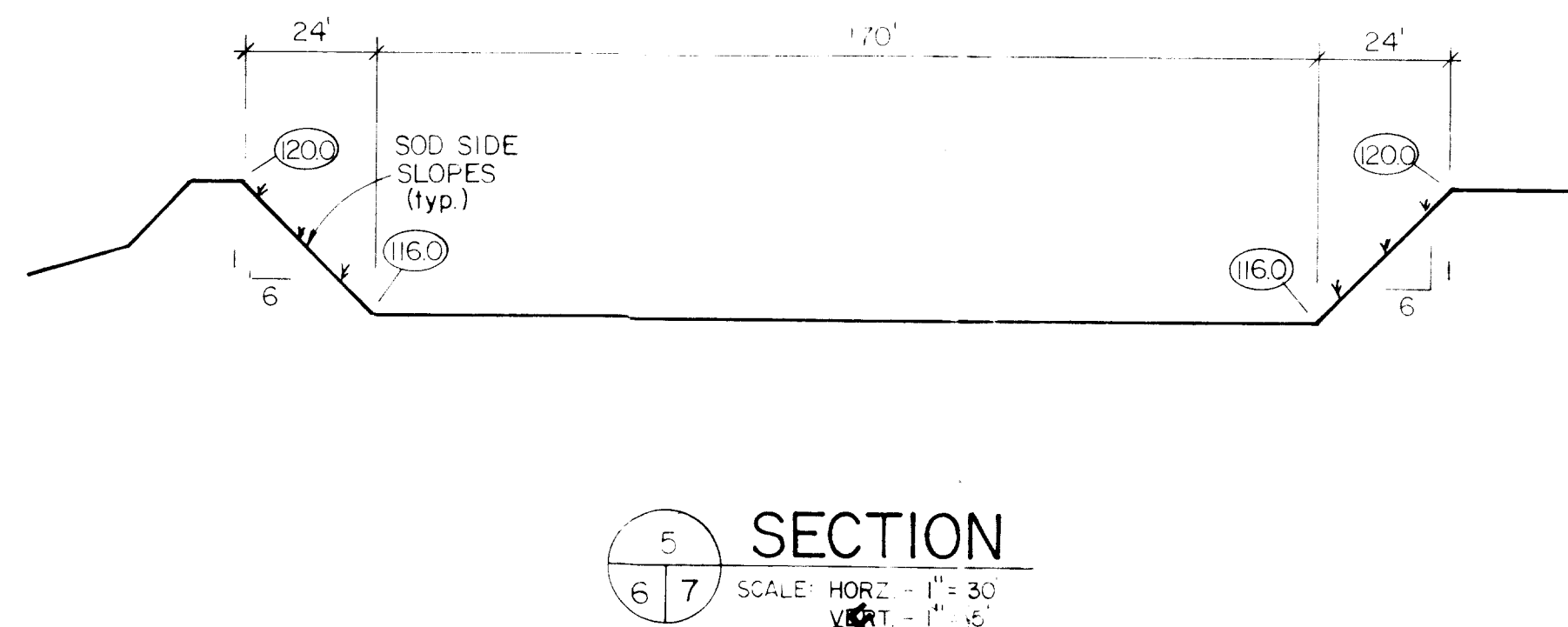


2
2 7 GAS VENT
N.T.S.

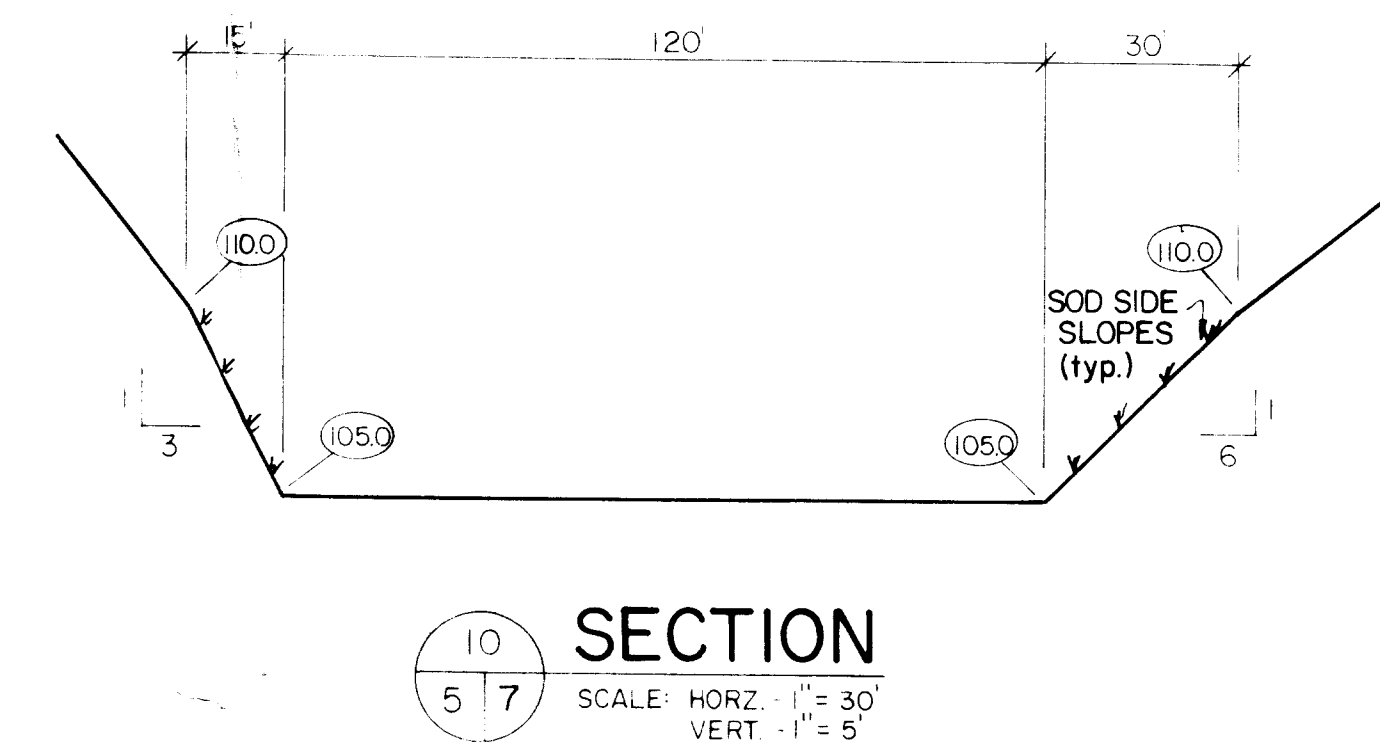
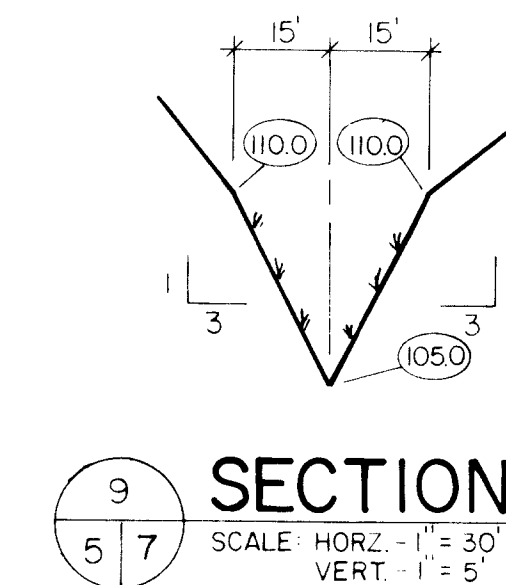
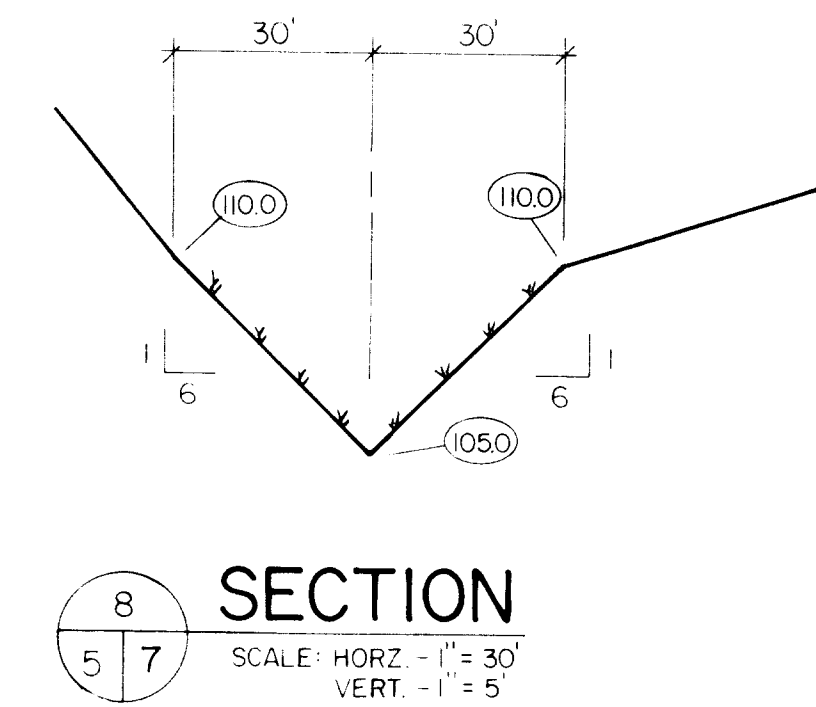
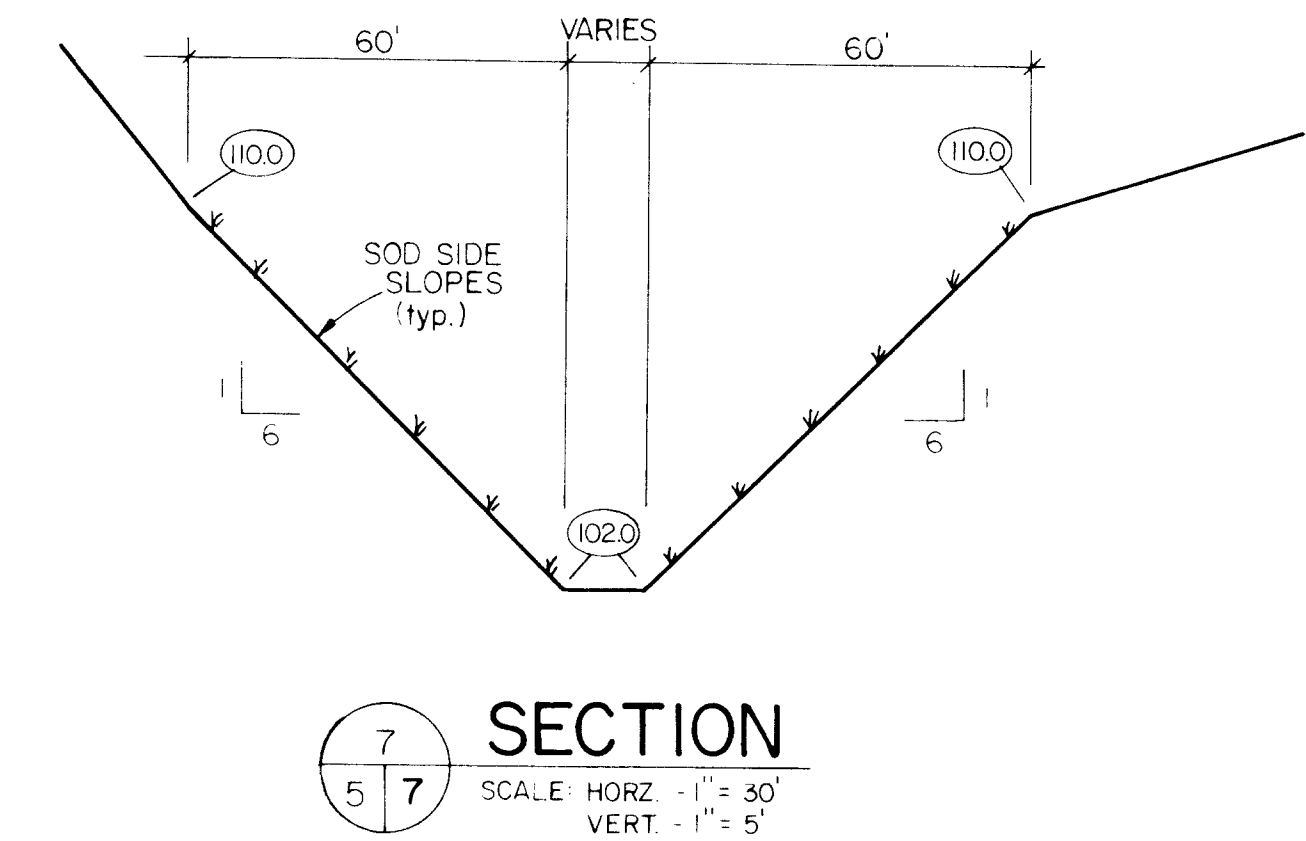
D.R.A.
No. 1



D.R.A.
No. 2



D.R.A.
No. 3

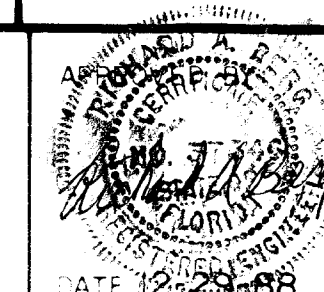


NOT A PART OF
THIS CONTRACT
PHASE II

REVISIONS			
BY	DATE	BY	DATE
BY	DATE	BY	DATE

PRELIMINARY		DESIGN	
BY	DATE	BY	DATE
DRAWN			
DESIGNED			
CHECKED			

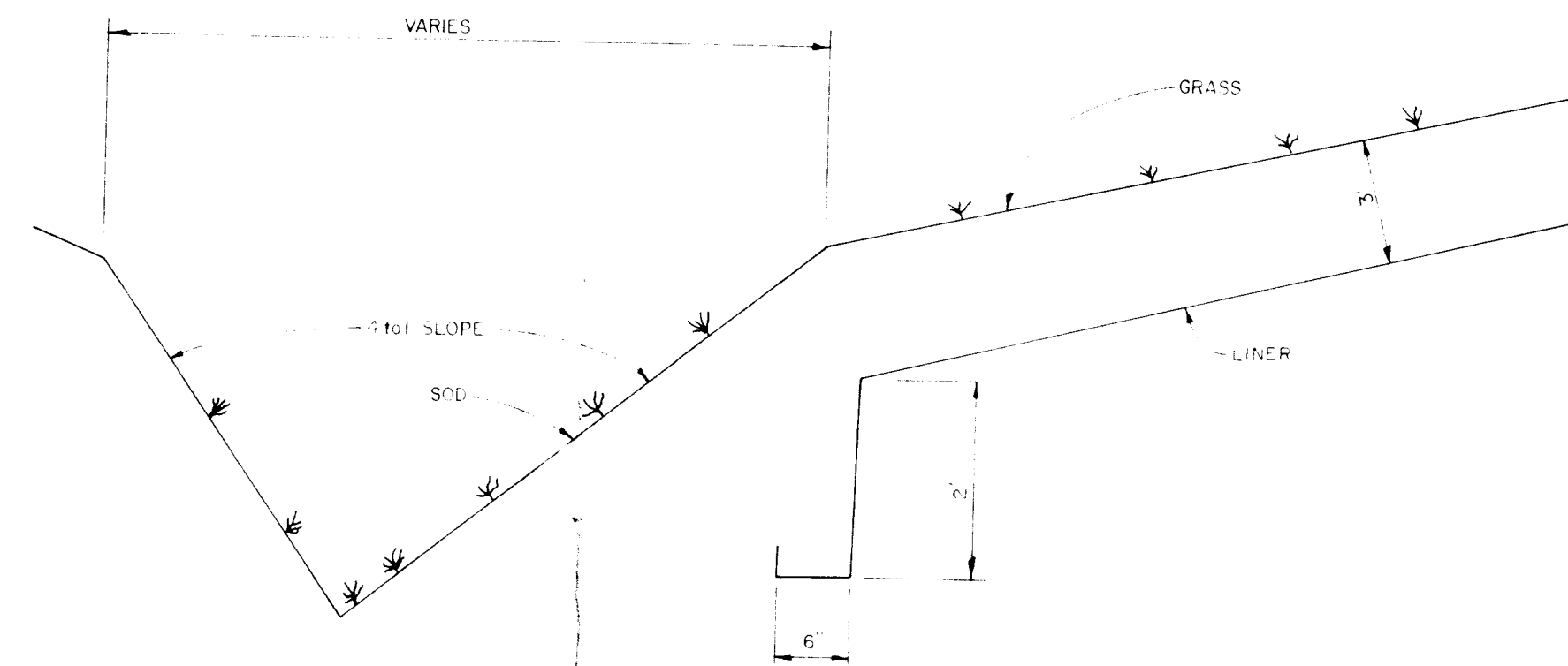
DEPARTMENT OF TECHNICAL SERVICES
CITRUS COUNTY, FLORIDA
ENGINEERING DIVISION



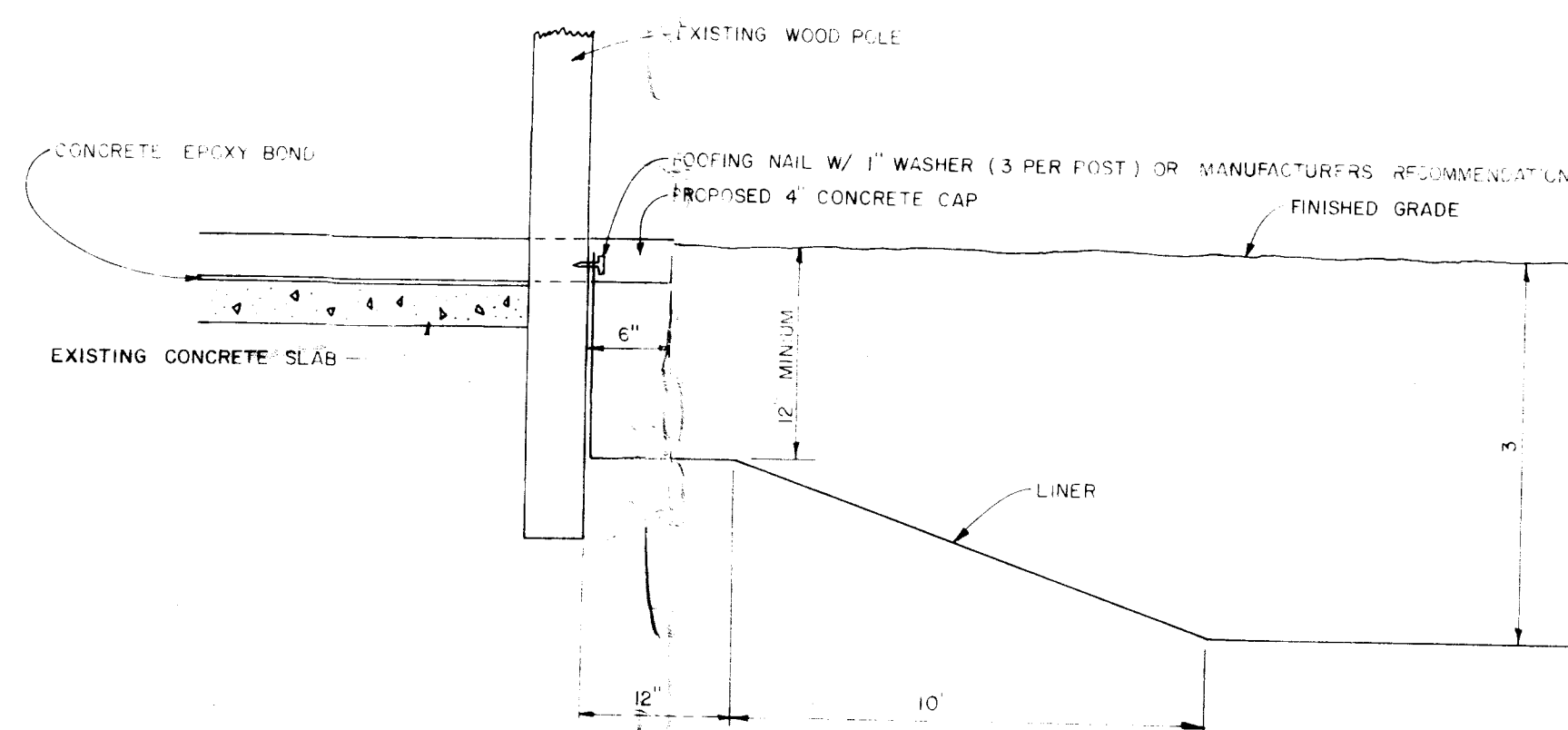
60 Acre Sanitary Landfill Closure
DETAILS

SECTION _____ TOWNSHIP _____ RANGE _____

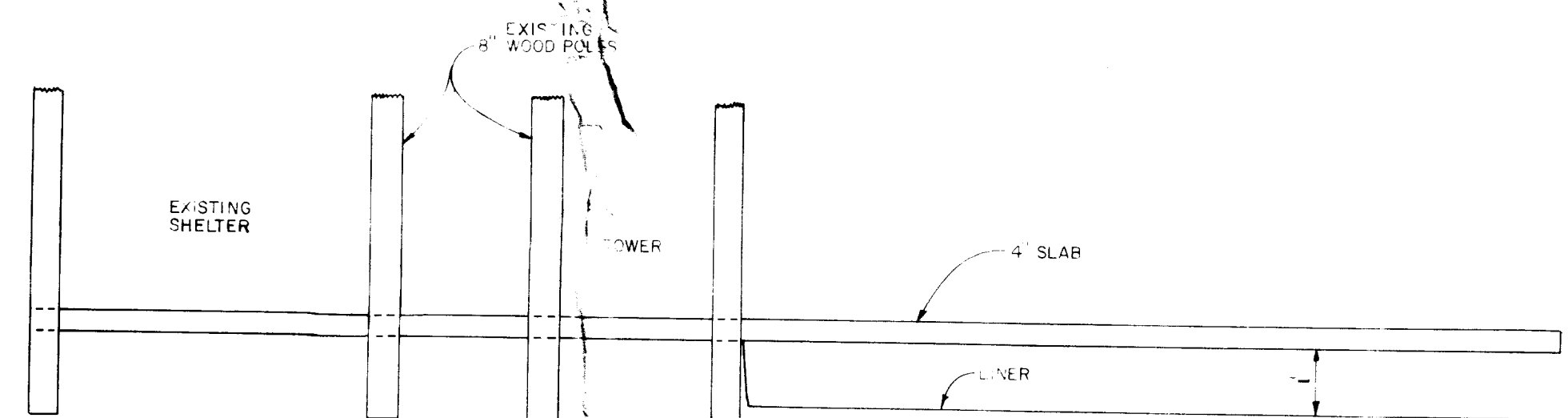
PROJECT NUMBER	SHEET
SCALE	7 OF 8
AS NOTED	FILE



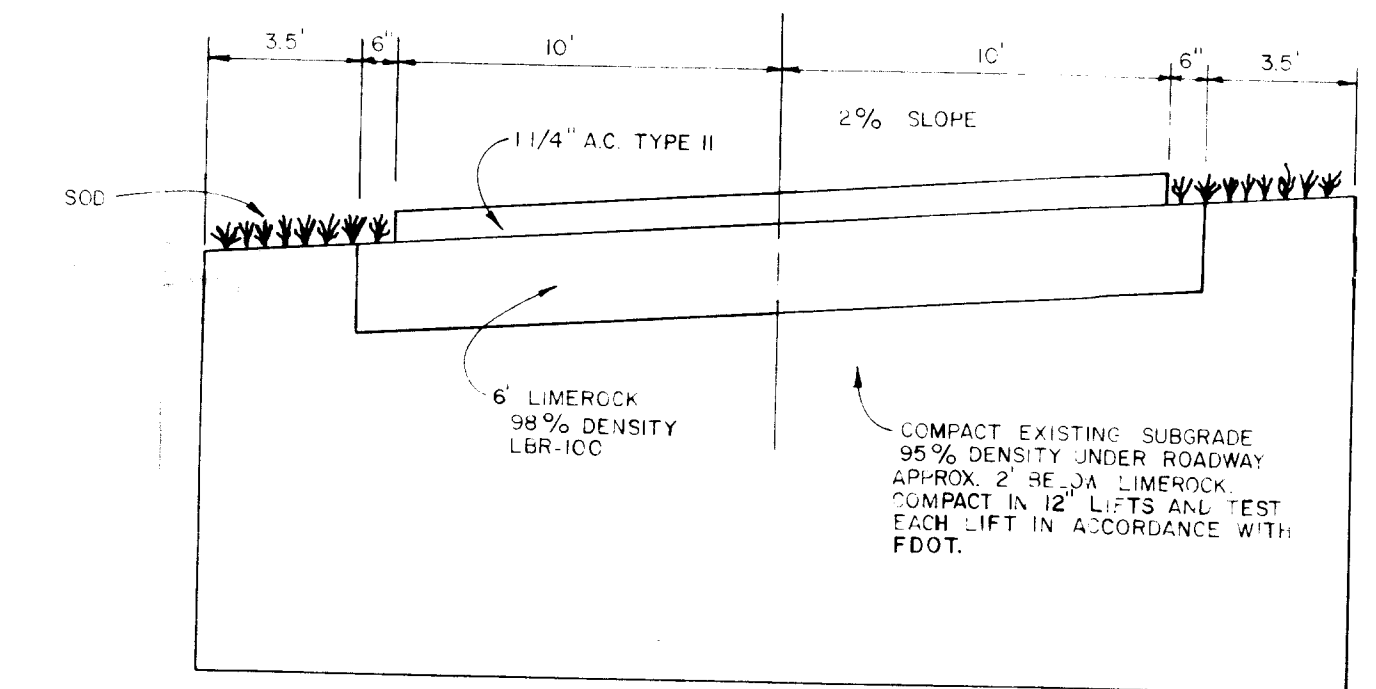
15 TYPICAL ANCHORING & SWALE DETAIL
2/8 N.T.S.



14 LINER CONNECTION DETAIL FOR PISTOL RANGE SHELTER
2/8 N.T.S.

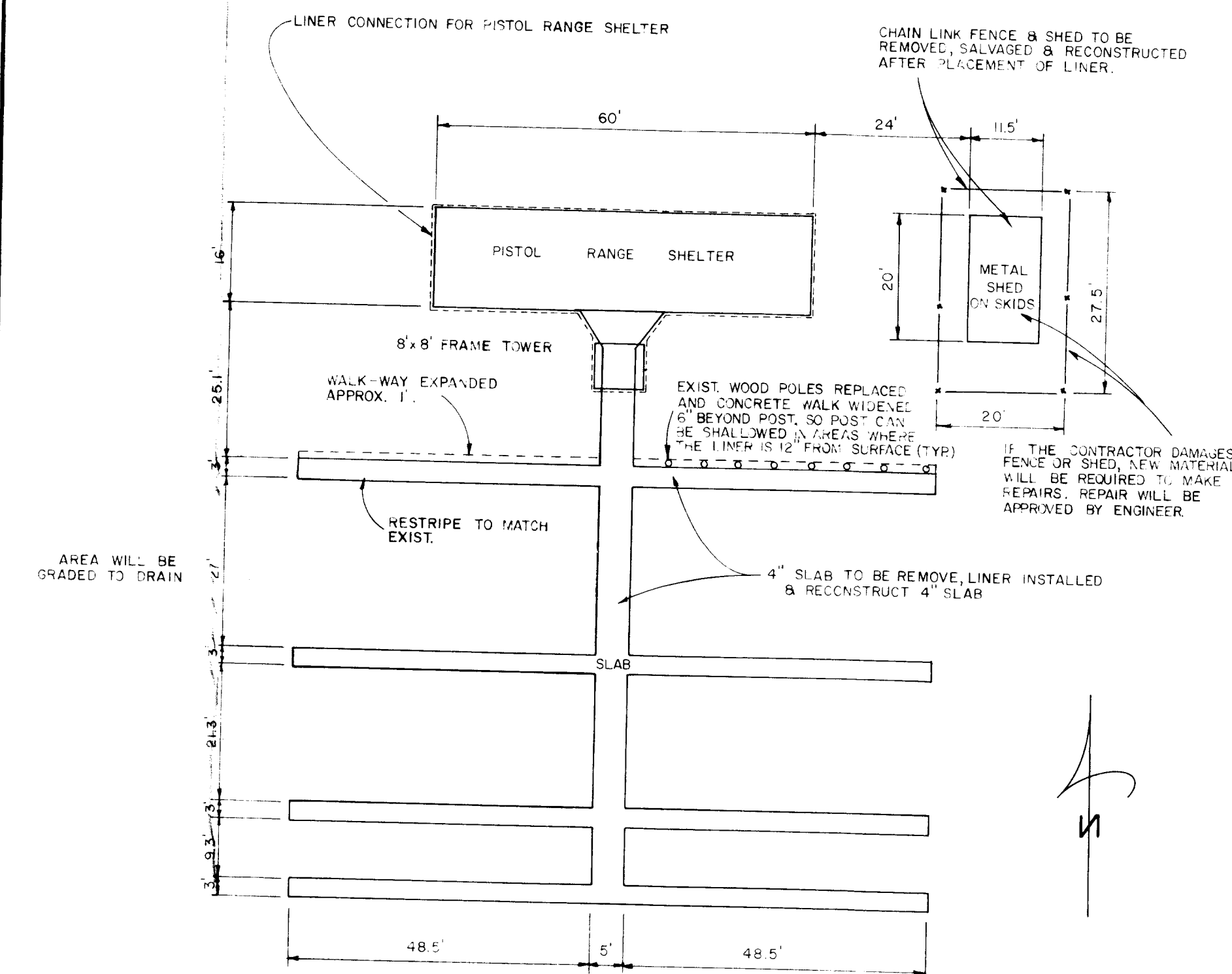


13 PISTOL RANGE CROSS-SECTION
2/8 N.T.S.



12 ROADWAY TYPICAL SECTION
2/8 N.T.S.

NOTE: CONTRACTOR WILL TAKE PHOTOGRAPHS OF THE PISTOL RANGE PRIOR TO ANY DEMOLITION, FOR A RECORD TO SHOW COMPLETE RESTORATION AFTER PLACEMENT OF LINER. CONTRACTOR IS RESPONSIBLE FOR ELECTRICAL RESTORATION OF SERVICE LINES TO THE PISTOL RANGE.

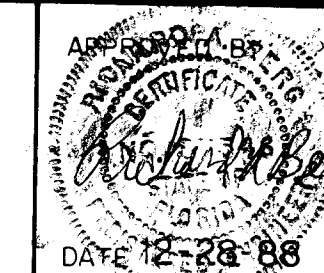


11 PISTOL RANGE
2/8 1\"/>

REVISIONS					
BY		BY		BY	
DATE		DATE		DATE	
BY		BY		BY	
DATE		DATE		DATE	

PRELIMINARY		DESIGN	
BY	DATE	BY	DATE
DRAWN			
DESIGNED			
CHECKED			

DEPARTMENT OF TECHNICAL SERVICES
CITRUS COUNTY, FLORIDA
ENGINEERING DIVISION



60 Acre Sanitary Landfill Closure
DETAILS

SECTION _____ TOWNSHIP _____ RANGE _____

PROJECT NUMBER _____ SHEET
8 of 8
SCALE
AS NOTED
FILE: _____

RECEIVED
JAN 01 1999
WASTE MANAGEMENT

