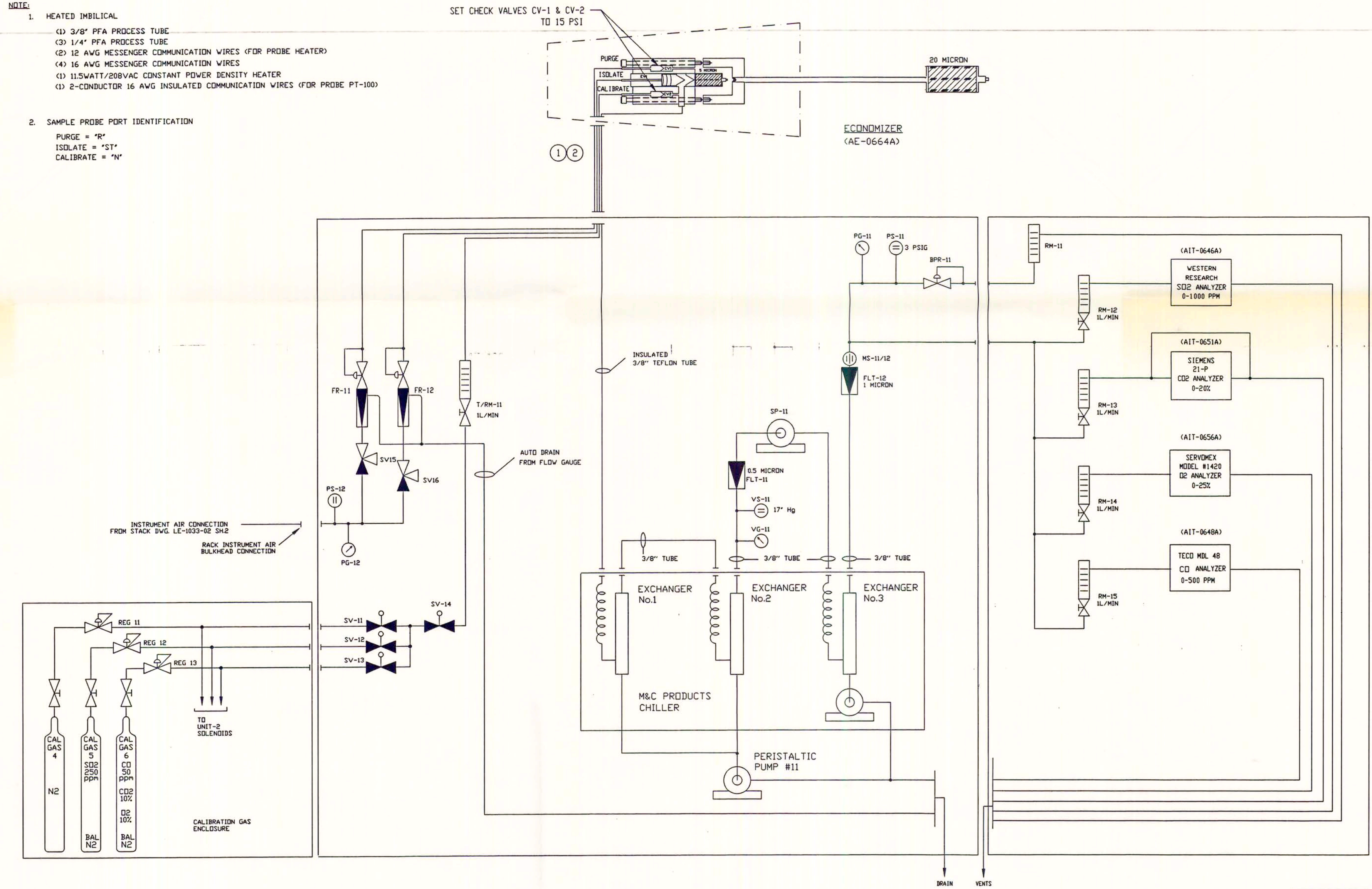


NOTE:

1. HEATED IMBIBICAL
 - (1) 3/8" PFA PROCESS TUBE
 - (2) 1/4" PFA PROCESS TUBE
 - (3) 12 AWG MESSENGER COMMUNICATION WIRES (FOR PROBE HEATER)
 - (4) 16 AWG MESSENGER COMMUNICATION WIRES
 - (5) 11.5WATT/208VAC CONSTANT POWER DENSITY HEATER
 - (6) 2-CONDUCTOR 16 AWG INSULATED COMMUNICATION WIRES (FOR PROBE PT-100)
2. SAMPLE PROBE PORT IDENTIFICATION
 - PURGE = "R"
 - ISOLATE = "ST"
 - CALIBRATE = "N"

SET CHECK VALVES CV-1 & CV-2 TO 15 PSI



REVISIONS	
1	INITIAL ISSUE RELEASED FOR REVIEW PR 03-08-93
2	DELETE (EO) NOX ANALYZER PR 04-22-93
3	REV. PER UE&C 5-3-93 COMMENTS. PR 05-27-93

NOTES:
 1. BOILER 101 INSTRUMENTS ARE SHOWN.
 BOILER 201 INSTRUMENTS ARE SIMILAR AND ARE TAGGED WITH SUFFIX "-B".
 (EXAMPLE: AIT-0649A)

OGDEN MARTIN SYSTEMS OF LEE, INC.
 SAMPLE SYSTEM FLOW DIAGRAM
 ECONOMIZER OUTLET

		DATE DESIGNED	DATE	LEE
		02/23/93	02/23/93	
DRAWN PR 02/23/93		PROJECT NO.	SCALE	
CHECKED DATE		DRAWING NO.	SHT. OF	REV.
APPROVED DATE 6/22/93		LE-1033-02	1	3

COMPANY CONFIDENTIAL
 This drawing and all information contained herein are the property of Ogden Martin Systems of LEE, Inc. and are not to be used except as expressly authorized in writing by said company.

LE021-3 05-27-93

