



1715 North Westshore Blvd., Suite 875
Tampa, Florida 33607
tel: 813 281-2900
fax: 813 288-8787

Dept. Of Environmental Protection
JUL 03 2012
Southwest District

June 29, 2012

Ms. Susan Pelz, P.E.
Waste Program Administrator
Florida Department of Environmental Protection
13051 North Telecom Parkway
Temple Terrace, Florida 33637-0926

Subject: Meeting at West Pasco Class I Landfill on June 27, 2012

Dear Ms. Pelz:

CDM Smith Inc., on behalf of Pasco County, thanks you and your staff for meeting with us on June 27, 2012, to discuss the response to the development of sinkholes in the stormwater retention pond east of the A-3 landfill cell. As we discussed, the following summarizes our understanding of the actions that will be taken in the immediate future to address the sinkholes:

- Pasco County will construct a temporary berm in the retention pond to prevent the flow of stormwater to the affected areas. The approximate location of the temporary berm is shown on the attached figure. Prior to constructing the berm, the area will be screened for potential subsidence with respect to the safety of the equipment operator using direct push (DPT) technology. Plans for the DPT screening will not be provided to FDEP for review and comment. The temporary berm will be constructed as soon as possible. DPT screening will begin on Monday, July 2, 2012.
- Pasco County will measure water levels in all monitor wells weekly for the next four weeks. Water level data and groundwater level contour maps will be provided to FDEP each week.
- Pasco County will provide work plans for the investigation of the sinkholes. The plans will include proposed locations for ground penetrating radar (GPR) transects and geotechnical borings. Actual locations of GPR transects and borings may be modified in the field based on field interpretations of data and hazard evaluations. A tight grid for borings and GPR transects will be established for the south retention pond near the sinkholes and a wider space grid will be established for borings and GPR transects in the north pond. The rationale for the selection of GPR and soil boring grids will be included. Attempts may also be made to drill into existing sinkholes to determine the depths if it is determined to be safe. The investigation will be initiated as soon as possible after FDEP approval. FDEP will expedite comments/approvals.
- Results of the investigation will be presented in a report. The report will also include results of feasibility analyses of potential remedial action strategies. Based on the results of the





Ms. Susan Pelz, P.E.

June 29, 2012

Page 2

investigation, the optimum strategy will be identified. A planning level remedial action plan (30%-50%) for implementing the selected strategy will be included. Remedial action construction will be initiated as soon as possible after receipt of FDEP approval of the plans.

Your cooperation and assistance is appreciated. Please let me know if you have any questions or require additional information.

Sincerely,

A handwritten signature in blue ink, appearing to read "William T. Beeson", with a long, sweeping horizontal line extending to the right.

William T. Beeson, P.G.

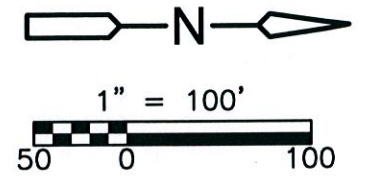
CDM Smith Inc.

Attachment

USER: nunesal
DATE: Jun 29, 2012 2:22pm

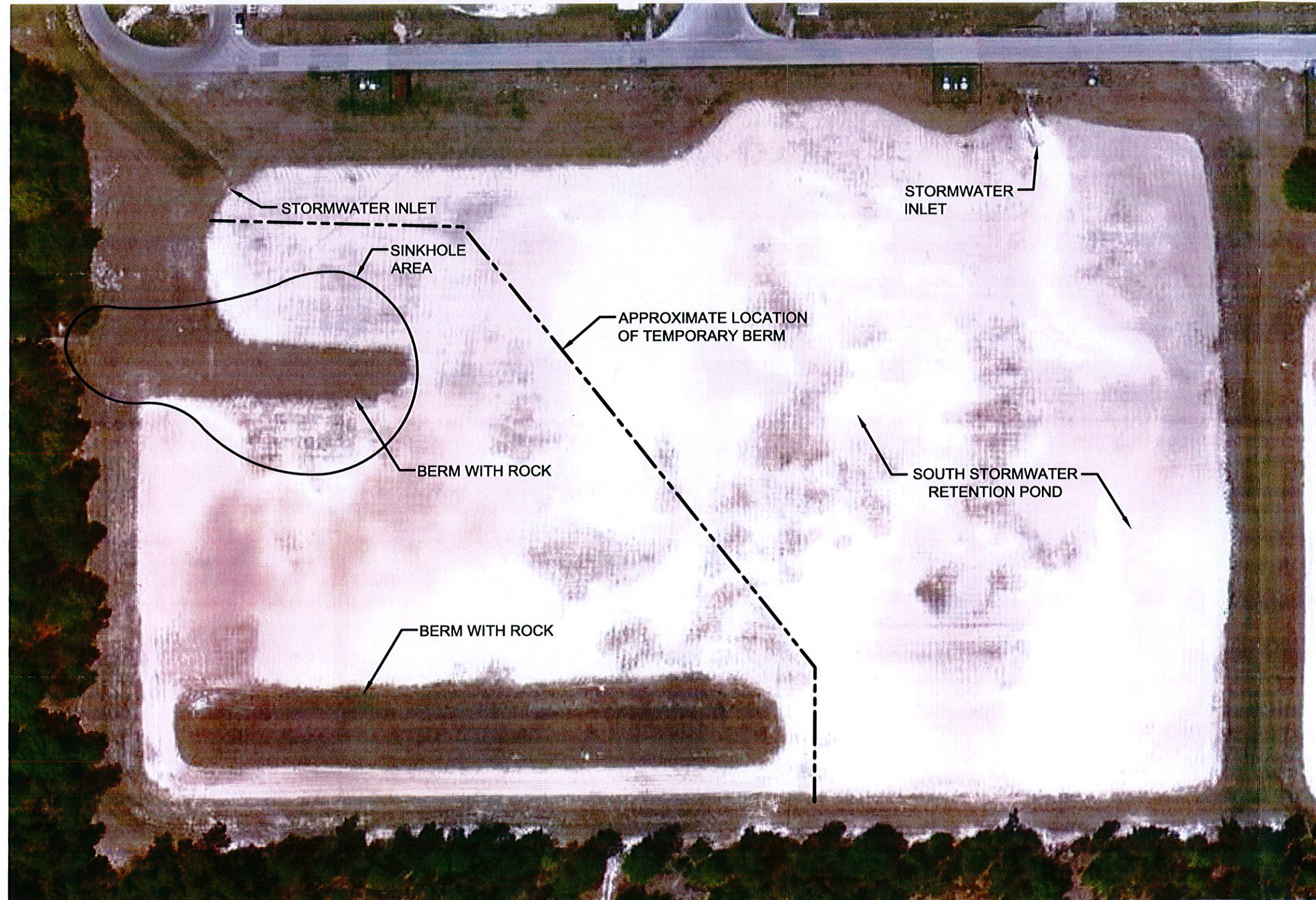
pw:\\dcpwapp1:PW_XM1\Documents\6104\79978\02 Project Information\03 Data\30 Reports\01 sink hole\FIG W.dwg
©2012 CDM SMITH ALL RIGHTS RESERVED. REUSE OF DOCUMENTS: THESE DOCUMENTS AND DESIGNS PROVIDED BY PROFESSIONAL SERVICE, INCORPORATED HEREIN, ARE THE PROPERTY OF CDM SMITH
AND ARE NOT TO BE USED, IN WHOLE OR PART, FOR ANY OTHER PROJECT WITHOUT THE WRITTEN AUTHORIZATION OF CDM SMITH.

A-3 LANDFILL CELLS



LEGEND:

FLORIDA DEPARTMENT OF
ENVIRONMENTAL PROTECTION
JUL 03 2012
SOUTHWEST DISTRICT
TAMPA



West Pasco Resource Recovery Facility
South Stormwater Retention Pond
Approximate Location of Temporary Berm