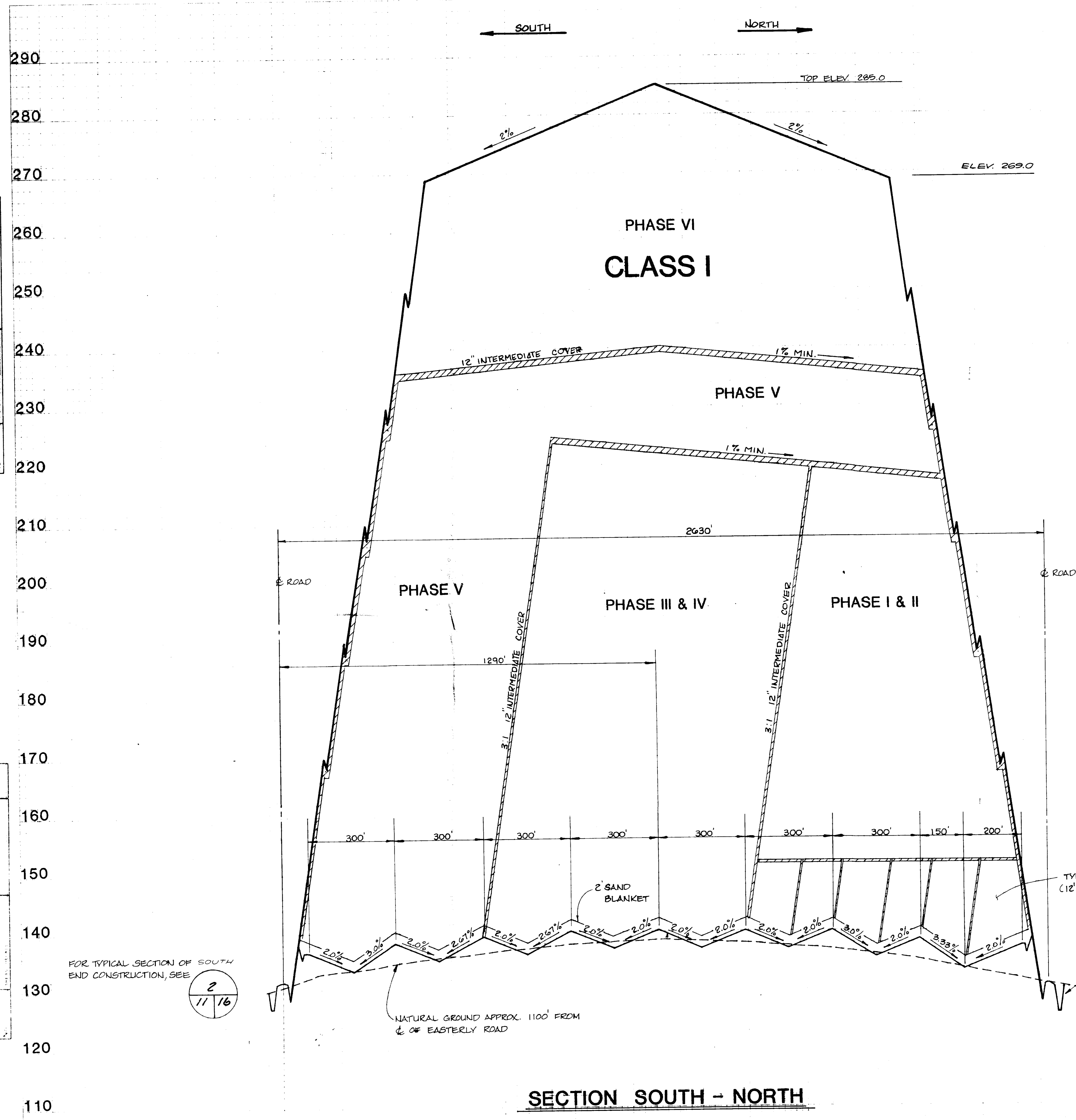


DATE	
BY	
REVISIONS	
NO.	DESCRIPTION
1	REVISED
2	REVISED
3	REVISED
4	REVISED
5	REVISED
6	REVISED
7	REVISED
8	REVISED
9	REVISED
10	REVISED
11	REVISED
12	REVISED
13	REVISED
14	REVISED
15	REVISED
16	REVISED
17	REVISED
18	REVISED
19	REVISED
20	REVISED
21	REVISED
22	REVISED
23	REVISED
24	REVISED
25	REVISED
26	REVISED
27	REVISED
28	REVISED
29	REVISED
30	REVISED
31	REVISED
32	REVISED
33	REVISED
34	REVISED
35	REVISED
36	REVISED
37	REVISED
38	REVISED
39	REVISED
40	REVISED
41	REVISED
42	REVISED
43	REVISED
44	REVISED
45	REVISED
46	REVISED
47	REVISED
48	REVISED
49	REVISED
50	REVISED
51	REVISED
52	REVISED
53	REVISED
54	REVISED
55	REVISED
56	REVISED
57	REVISED
58	REVISED
59	REVISED
60	REVISED
61	REVISED
62	REVISED
63	REVISED
64	REVISED
65	REVISED
66	REVISED
67	REVISED
68	REVISED
69	REVISED
70	REVISED
71	REVISED
72	REVISED
73	REVISED
74	REVISED
75	REVISED
76	REVISED
77	REVISED
78	REVISED
79	REVISED
80	REVISED
81	REVISED
82	REVISED
83	REVISED
84	REVISED
85	REVISED
86	REVISED
87	REVISED
88	REVISED
89	REVISED
90	REVISED
91	REVISED
92	REVISED
93	REVISED
94	REVISED
95	REVISED
96	REVISED
97	REVISED
98	REVISED
99	REVISED
100	REVISED

DATE	
BY	
REVISIONS	
NO.	DESCRIPTION
1	REVISED
2	REVISED
3	REVISED
4	REVISED
5	REVISED
6	REVISED
7	REVISED
8	REVISED
9	REVISED
10	REVISED
11	REVISED
12	REVISED
13	REVISED
14	REVISED
15	REVISED
16	REVISED
17	REVISED
18	REVISED
19	REVISED
20	REVISED
21	REVISED
22	REVISED
23	REVISED
24	REVISED
25	REVISED
26	REVISED
27	REVISED
28	REVISED
29	REVISED
30	REVISED
31	REVISED
32	REVISED
33	REVISED
34	REVISED
35	REVISED
36	REVISED
37	REVISED
38	REVISED
39	REVISED
40	REVISED
41	REVISED
42	REVISED
43	REVISED
44	REVISED
45	REVISED
46	REVISED
47	REVISED
48	REVISED
49	REVISED
50	REVISED
51	REVISED
52	REVISED
53	REVISED
54	REVISED
55	REVISED
56	REVISED
57	REVISED
58	REVISED
59	REVISED
60	REVISED
61	REVISED
62	REVISED
63	REVISED
64	REVISED
65	REVISED
66	REVISED
67	REVISED
68	REVISED
69	REVISED
70	REVISED
71	REVISED
72	REVISED
73	REVISED
74	REVISED
75	REVISED
76	REVISED
77	REVISED
78	REVISED
79	REVISED
80	REVISED
81	REVISED
82	REVISED
83	REVISED
84	REVISED
85	REVISED
86	REVISED
87	REVISED
88	REVISED
89	REVISED
90	REVISED
91	REVISED
92	REVISED
93	REVISED
94	REVISED
95	REVISED
96	REVISED
97	REVISED
98	REVISED
99	REVISED
100	REVISED



SECTION SOUTH - NORTH

FOR TYPICAL SECTION OF SOUTH END CONSTRUCTION, SEE

2
11/16

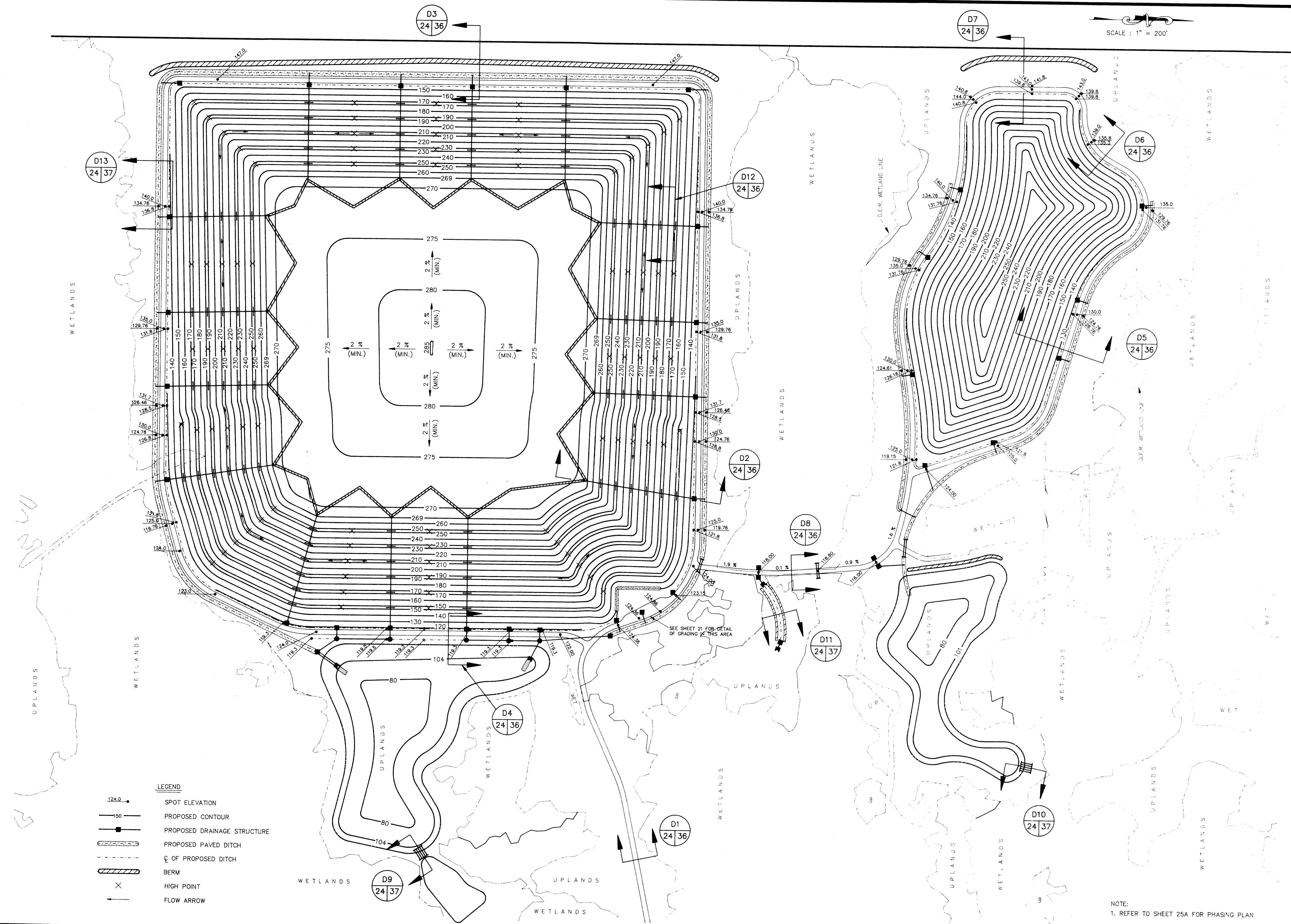
FOR TYPICAL SECTION OF NORTH END CONSTRUCTION, SEE

1
11/16

CLASS I	
TRAIL RIDGE LANDFILL (PLAN A)	
England-Thims & Miller, Inc. Consulting & Design Engineers 3131 St. Johns Bluff Road So. Jacksonville, FL 32216 904-642-8990	
DATE: 11-9-91 DRAWN BY: TJS CHECKED BY: RSP DATE: JUNE, 1990	1-15-91 CONTRACT DOCUMENTS 12-9-91 BID SET 12-21-91 REVISED 12-21-92 PROVIDED SLOPE TERRACE TO CLASS I LANDFILL PER SPECIFIC REQUIREMENTS OF 22-2
11	
1/6/92 RELEASED FOR CONSTRUCTION	

SCALE: 1" = 200' HORIZ.
1" = 10' VERT.

SCALE: 1" = 200'



- LEGEND**
- SPOT ELEVATION
 - PROPOSED CONTOUR
 - PROPOSED DRAINAGE STRUCTURE
 - PROPOSED PAVED DITCH
 - Q OF PROPOSED DITCH
 - BERM
 - HIGH POINT
 - FLOW ARROW

SEE SHEET 21 FOR DETAIL OF GRADING IN THIS AREA

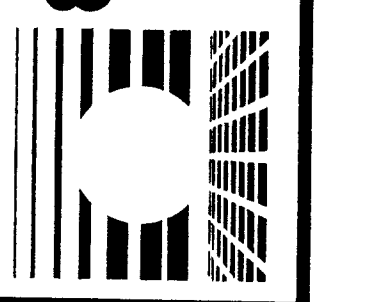
NOTE:
1. REFER TO SHEET 25A FOR PHASING PLAN

REVISIONS:
PROVIDED SIDESLOPES TERRACES TO CLASS 1
WETLAND PER SPECIFIC PERMIT CONDITION
NUMBER 4

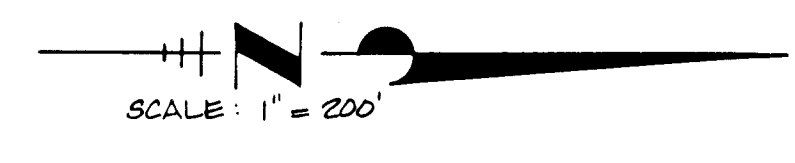
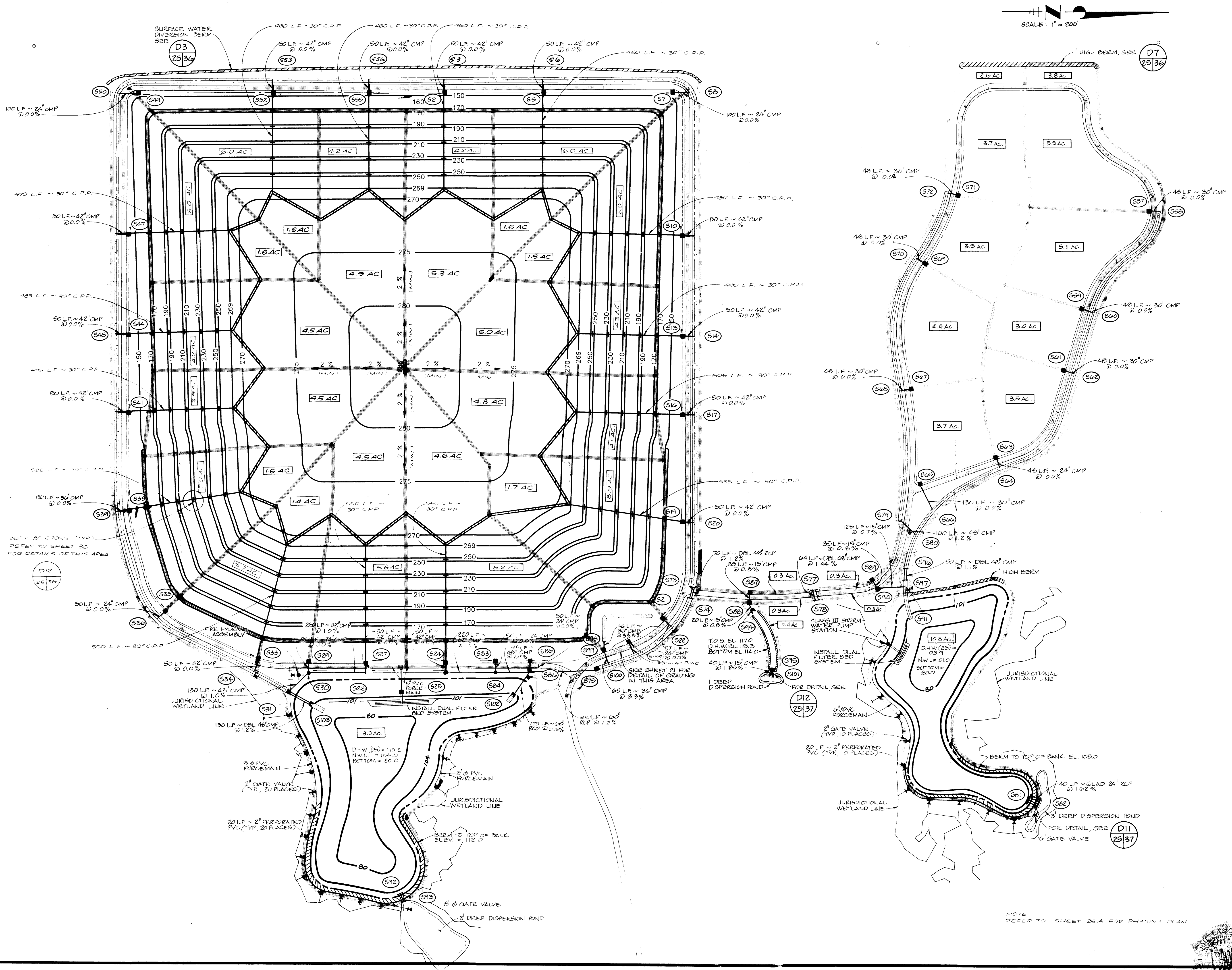
ENG. PROJ. NO. E 89-113-9	CHECKED BY: S.J.L.
DRAWN BY: S.J.L.	DATE: JANUARY 9, 1992

FINAL CONTOUR PLAN
TRAIL RIDGE LANDFILL

England-Thims & Miller, Inc.
Consulting & Design Engineers
JACKSONVILLE, FLORIDA



DRAWING NO.



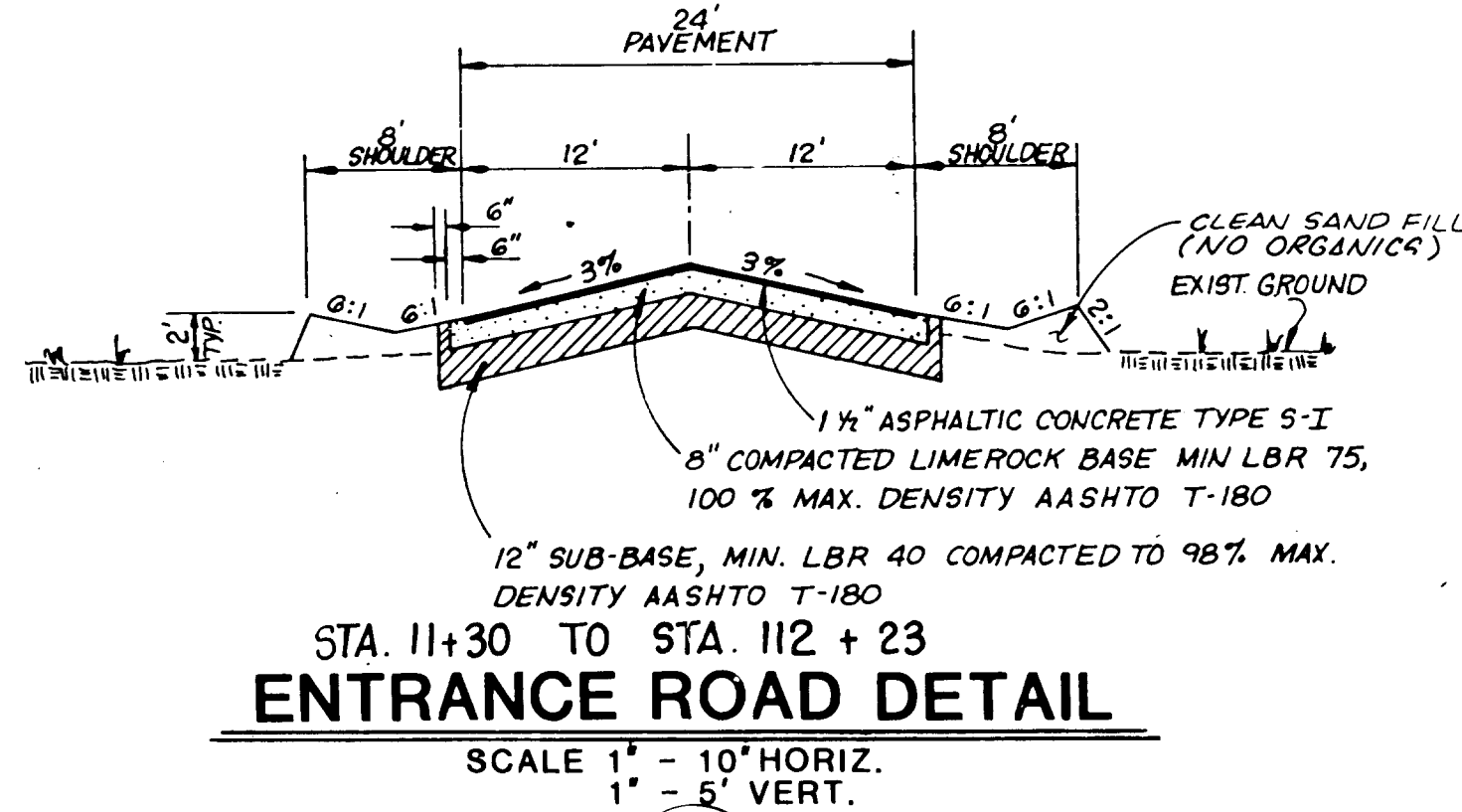
REVISIONS:
 1-10-90 ADDED WETLAND LINE
 1-10-91 CONTRACT DOCUMENTS
 1-10-91 AS PER CITY COMMENTS
 1-15-92 PROVIDED W/ENCLOSURE
 1-15-92 REVISIONS TO CLASS III LANDFILL PER
 SPECIAL PERMIT DIVISION NO. 4

PLS PROJ. NO.
 89-113-9
 DRAWN BY
 TLO
 CHECKED BY
 BAA
 DATE
 JUNE 18, 1990

STORMWATER MANAGEMENT PLAN
TRAIL RIDGE LANDFILL
 (PLAN A)

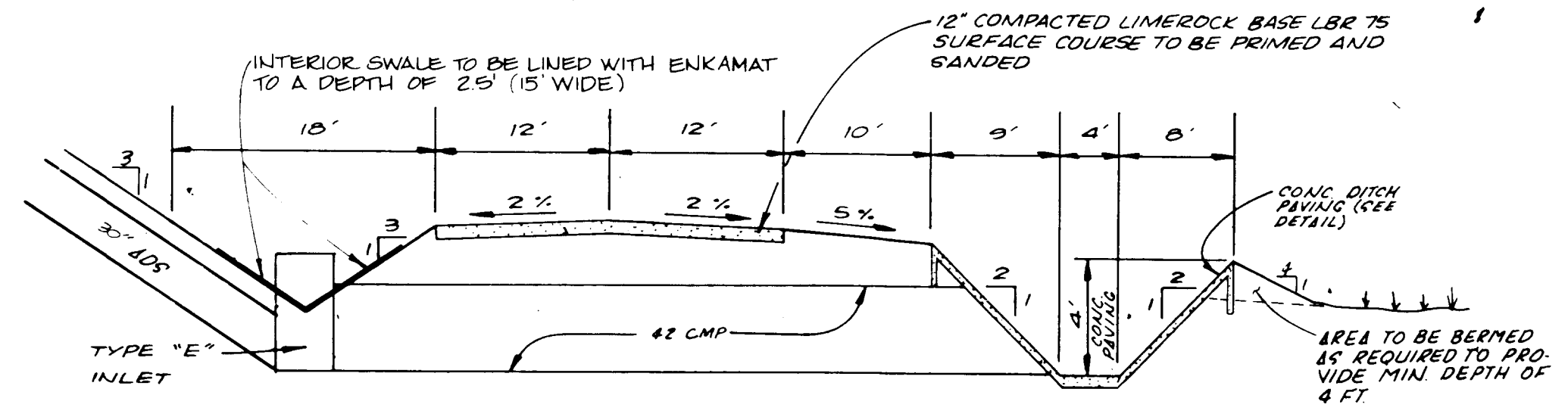
England-Thims & Miller, Inc.
 Consulting & Design Engineers
 JACKSONVILLE, FLORIDA

NOTE
 REFER TO SHEET 25A FOR PHASING PLAN



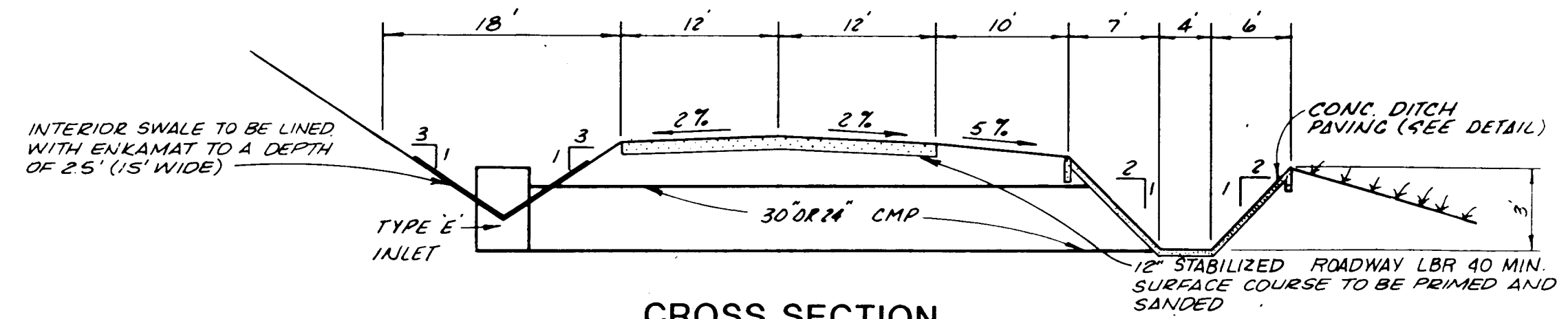
ENTRANCE ROAD DETAIL
STA. 11+30 TO STA. 112 + 23
SCALE 1" = 10' HORIZ.
1" = 5' VERT.

D1
24/36



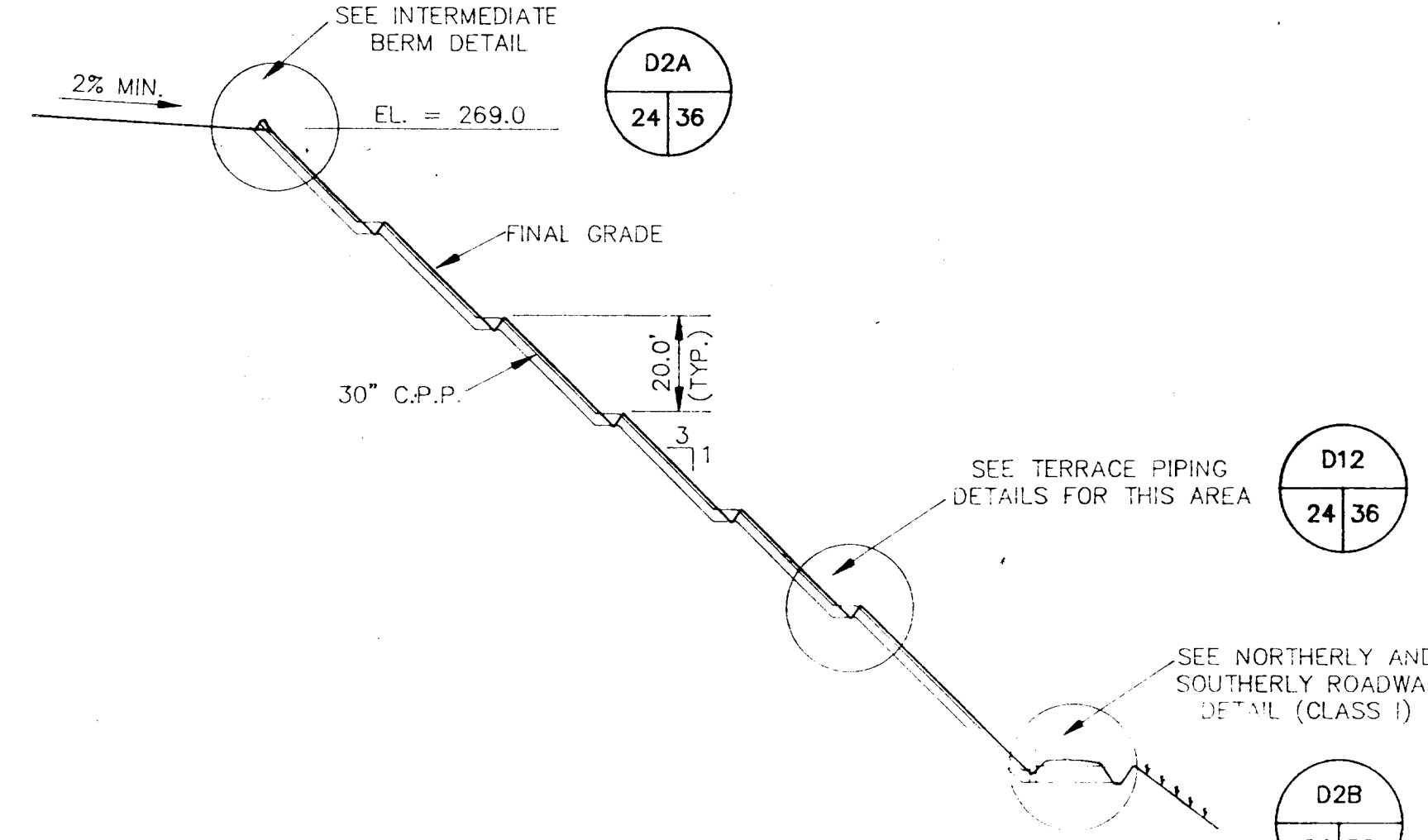
NORTHERLY AND SOUTHERLY ROADWAY DETAIL (CLASS I)

D2B
24/36



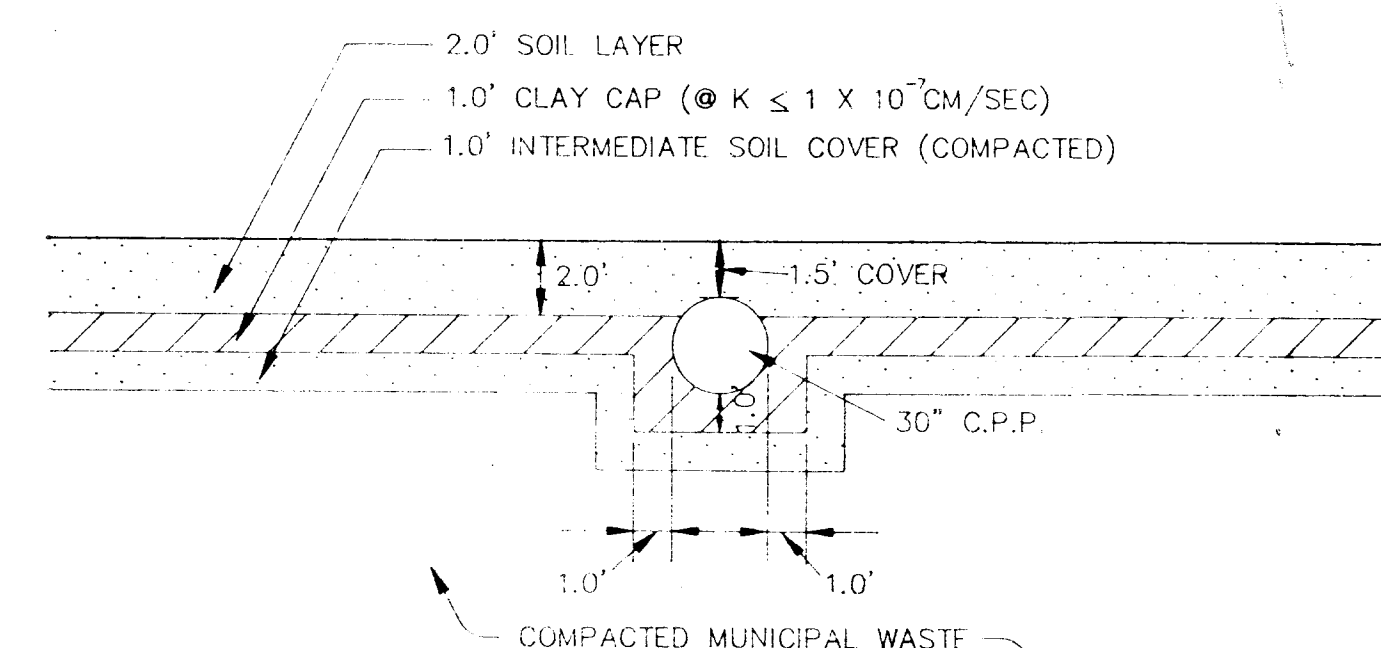
NORTHERLY, SOUTHERLY & EASTERLY ROADWAY (CLASS III)

D5
24/36



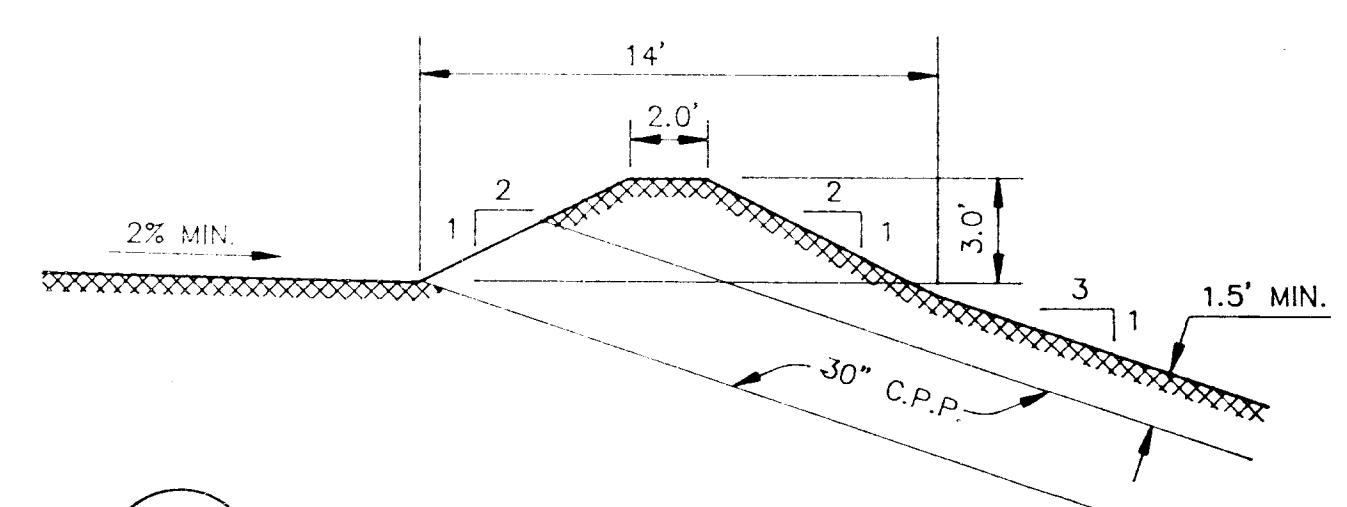
D2
24/36

CROSS-SECTION



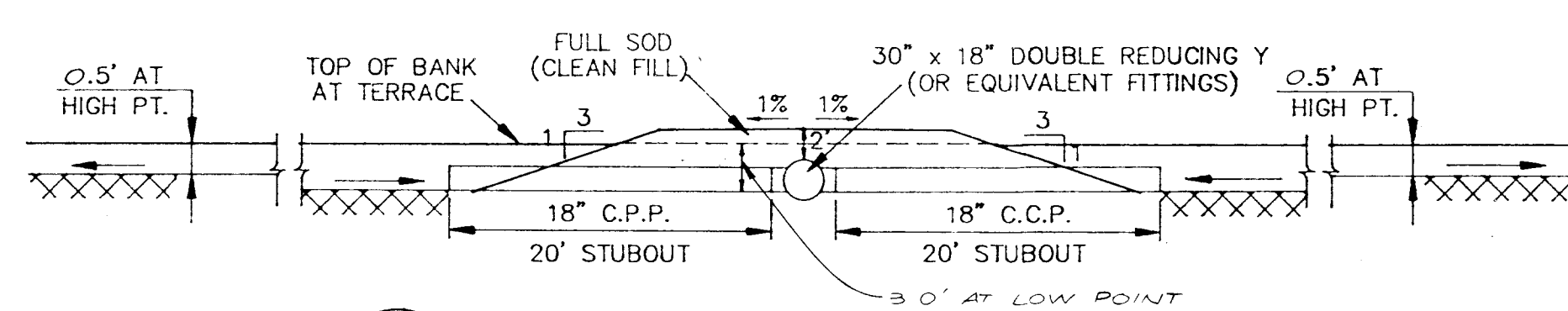
D12B
36/36

PIPE SECTION



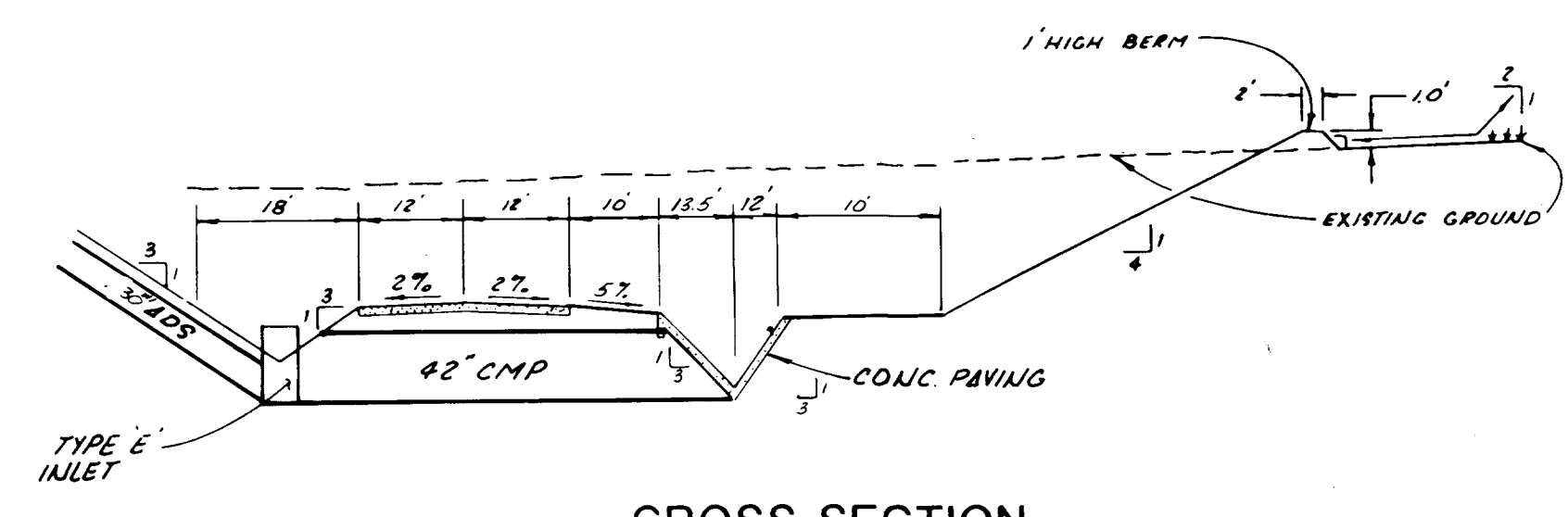
D2A
24/36

INTERMEDIATE BERM DETAIL



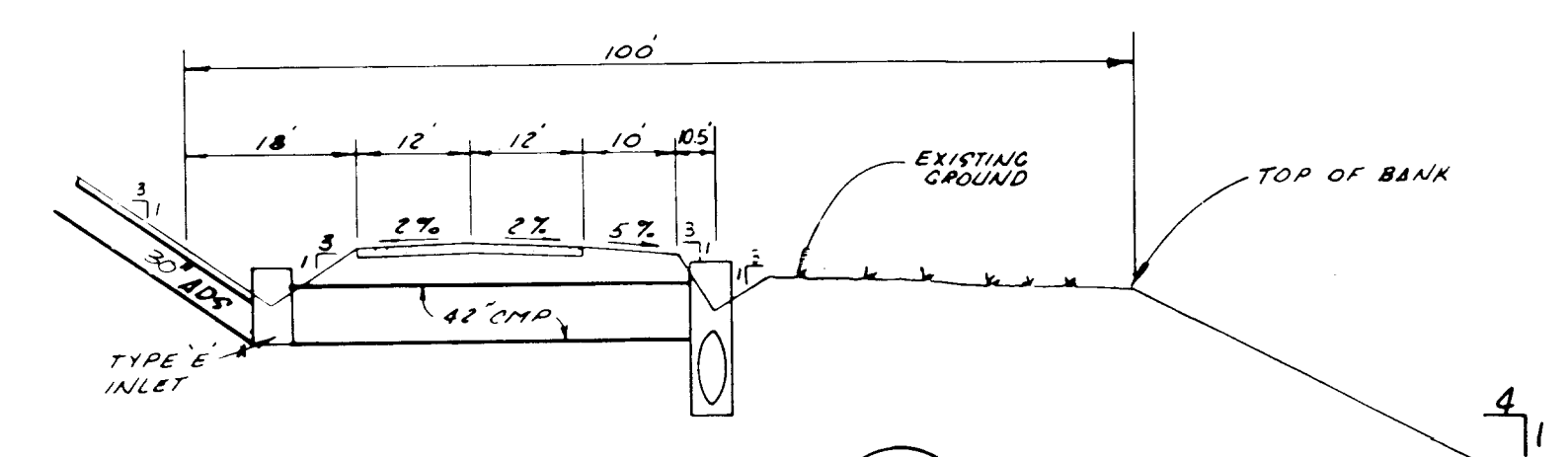
D12
24/36

TERRACE PIPING DETAIL



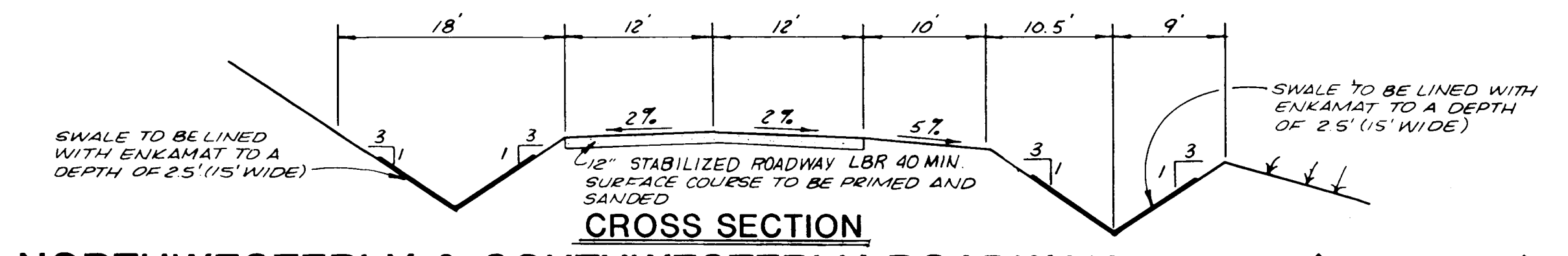
CROSS SECTION WESTERLY ROAD DETAIL (CLASS I)

D3
24/36



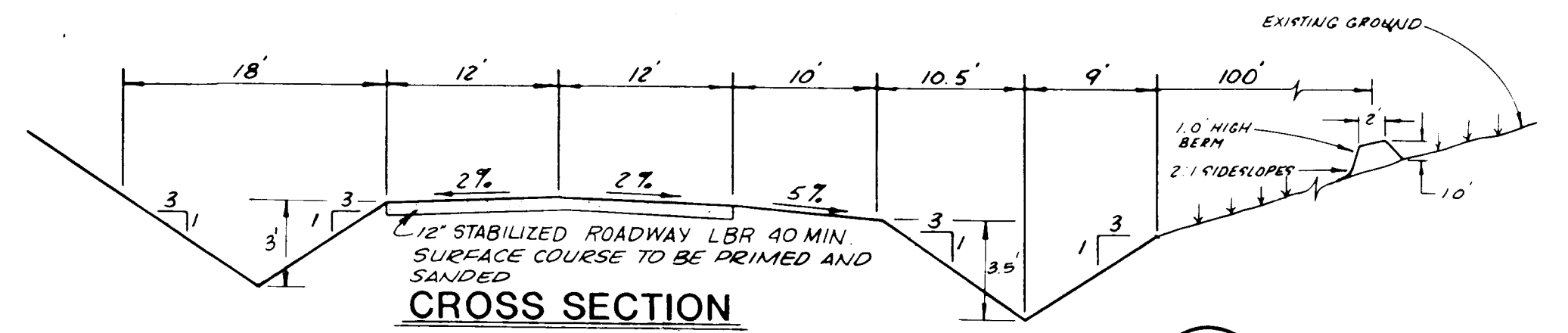
CROSS SECTION EASTERLY ROADWAY DETAIL (CLASS I)

D4
24/36



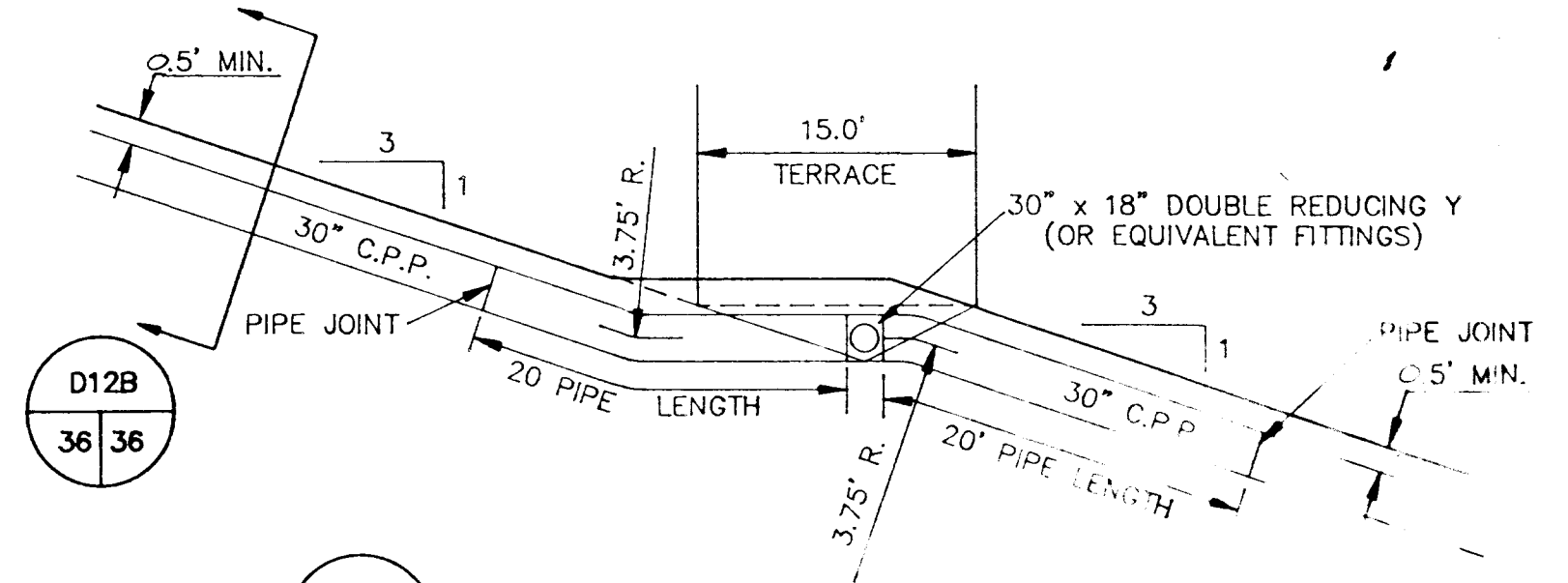
CROSS SECTION NORTHWESTERLY & SOUTHWESTERLY ROADWAY DETAIL (CLASS III)

D6
24/36



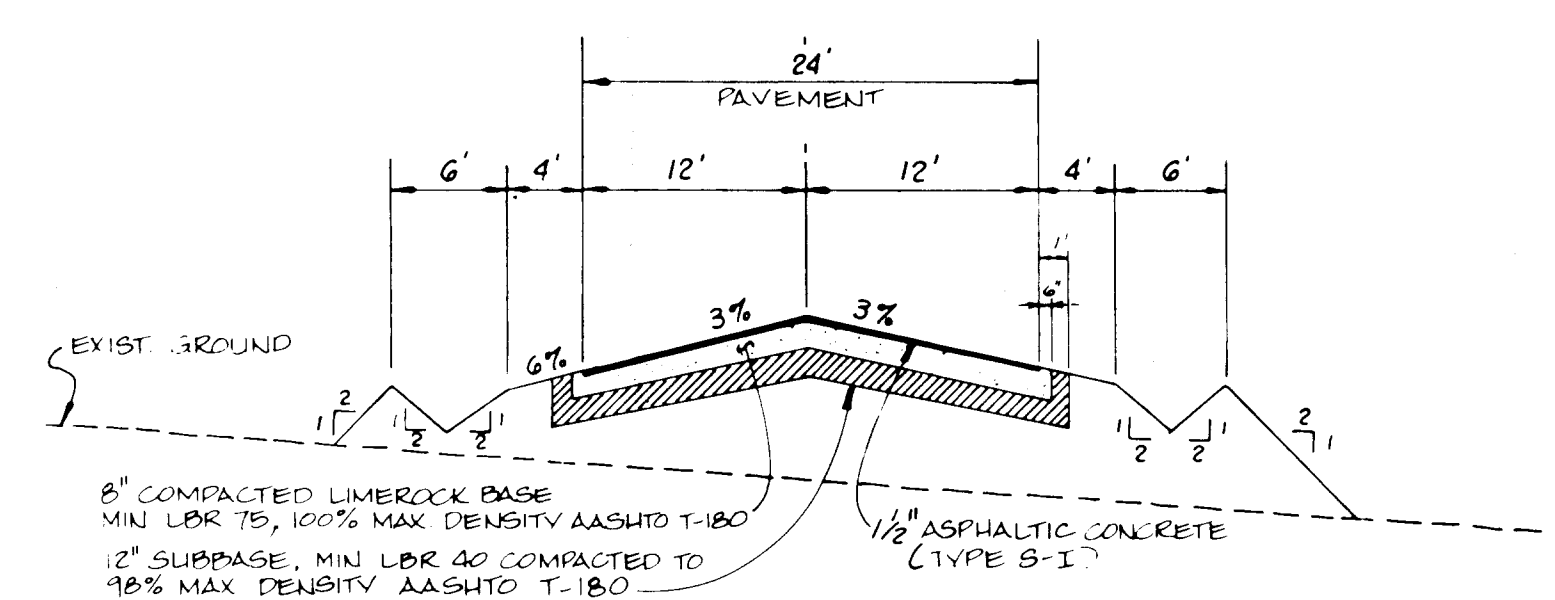
CROSS SECTION WESTERLY ROADWAY DETAIL (CLASS III)

D7
24/36



D12A
36/36

TERRACE PIPING DETAIL



ROADWAY SECTION BETWEEN CLASS I & CLASS III LANDFILLS

SCALE: 1" = 10' HORIZ.
1" = 2' VERT.

D8
24/36

16/92 RELEASED FOR CONSTRUCTION

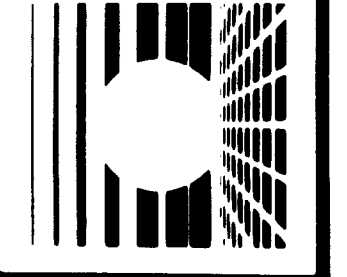
REVISIONS: BY P.M.T. THICKNESS
1-15-91 CONTRACT DOCUMENTS
12-9-91 BID SET
1-1-92 REVISED SIDE-SLOPE TERRACES
TO CLARIFY MATERIALS & ADDED DETAILS
TO CLARIFY MATERIALS & ADDED DETAILS
PRESENT CONDITION AND

ENG. PROJ. NO.
689-712-9
DRAWN BY
P.M.T.
CHECKED BY
S.J.W.
DATE
JUNE 18, 1990

PAVING AND DRAINAGE DETAILS

TRAIL RIDGE LANDFILL (PLAN A)

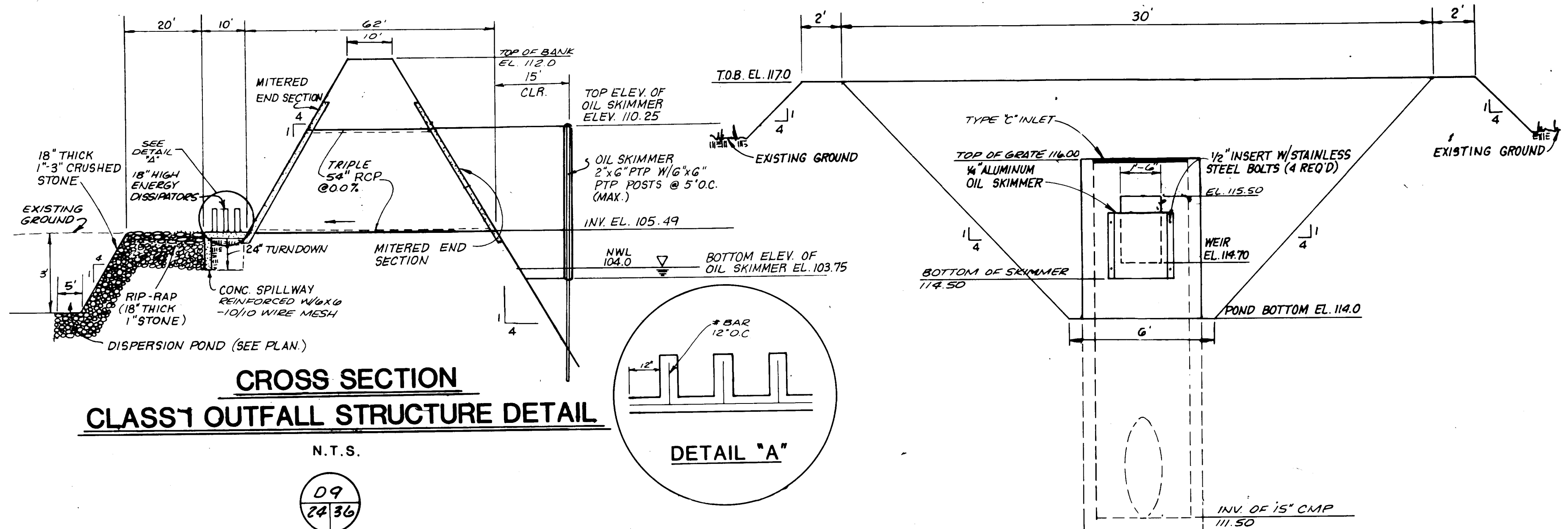
England-Thims & Miller, Inc.
Consulting & Design Engineers
JACKSONVILLE, FLORIDA



DRAWING NO.

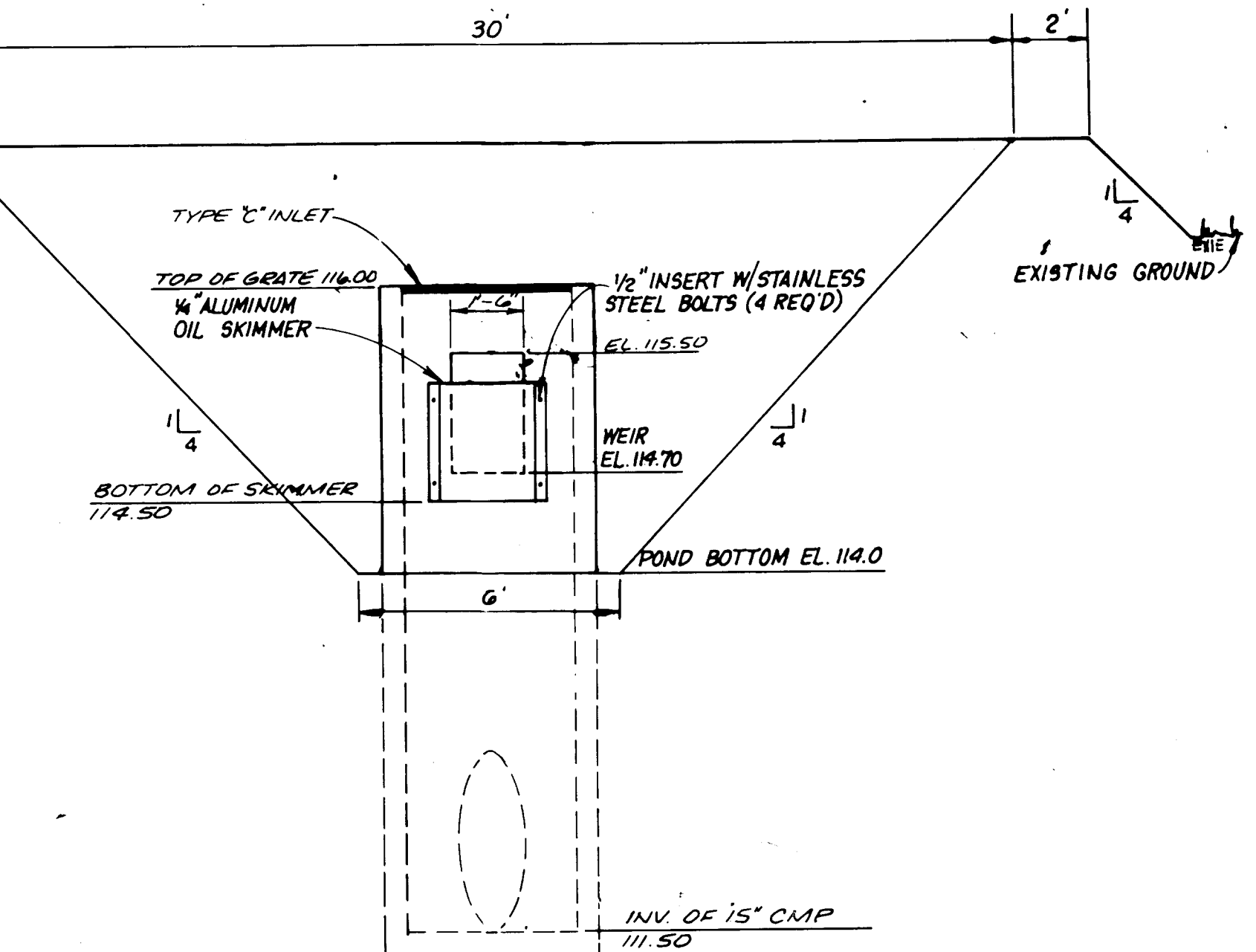
36

PROJ. NO. 689-712-9



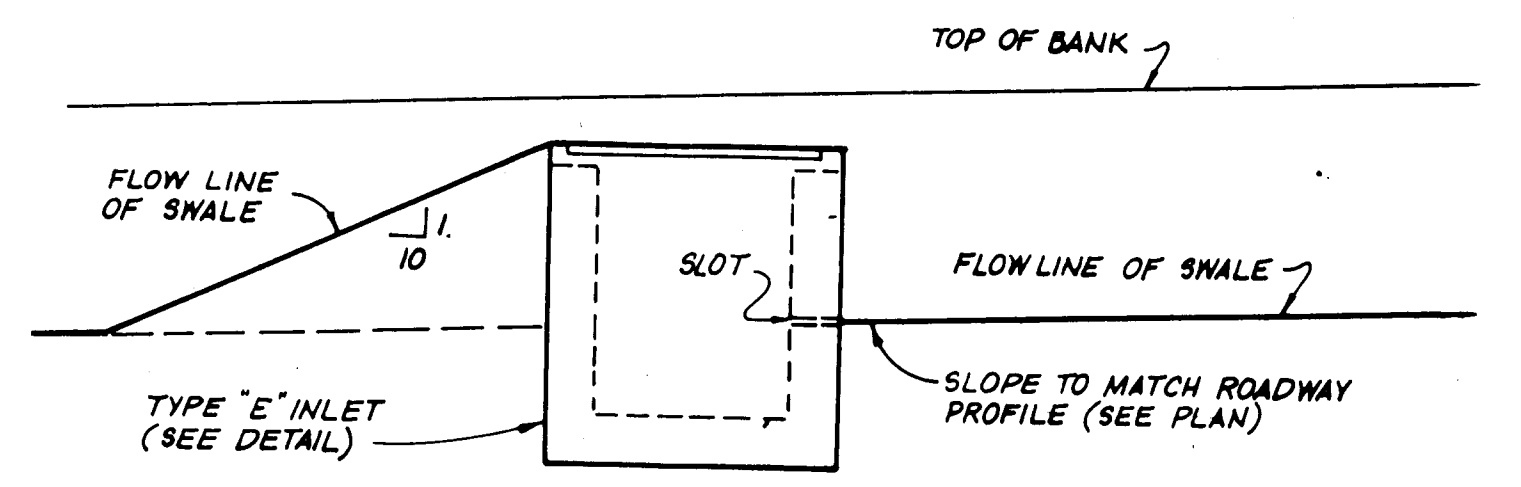
**CROSS SECTION
CLASS I OUTFALL STRUCTURE DETAIL**

N.T.S.
D9
24/36



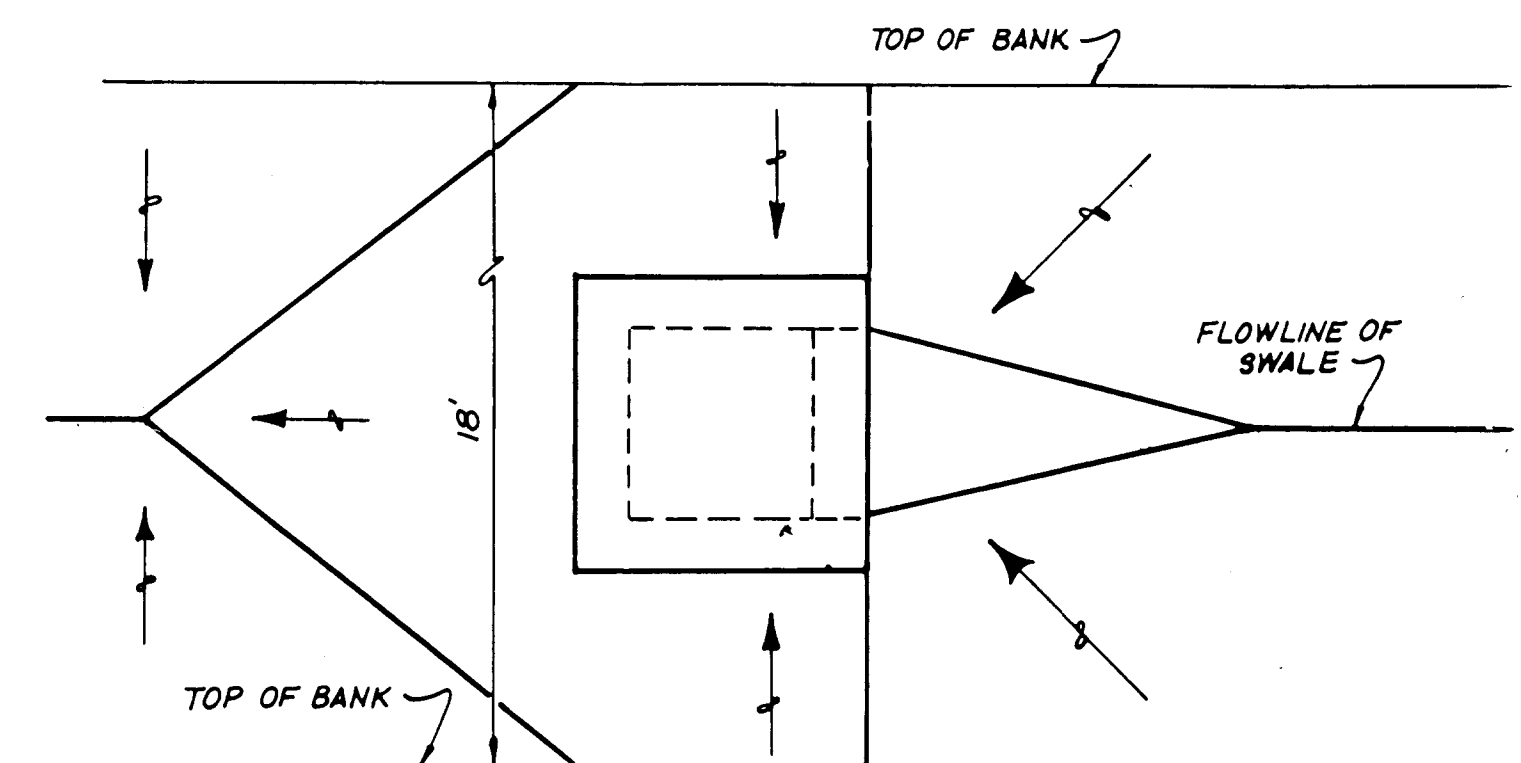
**CROSS SECTION
ROADWAY DETENTION POND DETAIL**

N.T.S.
D11
24/37



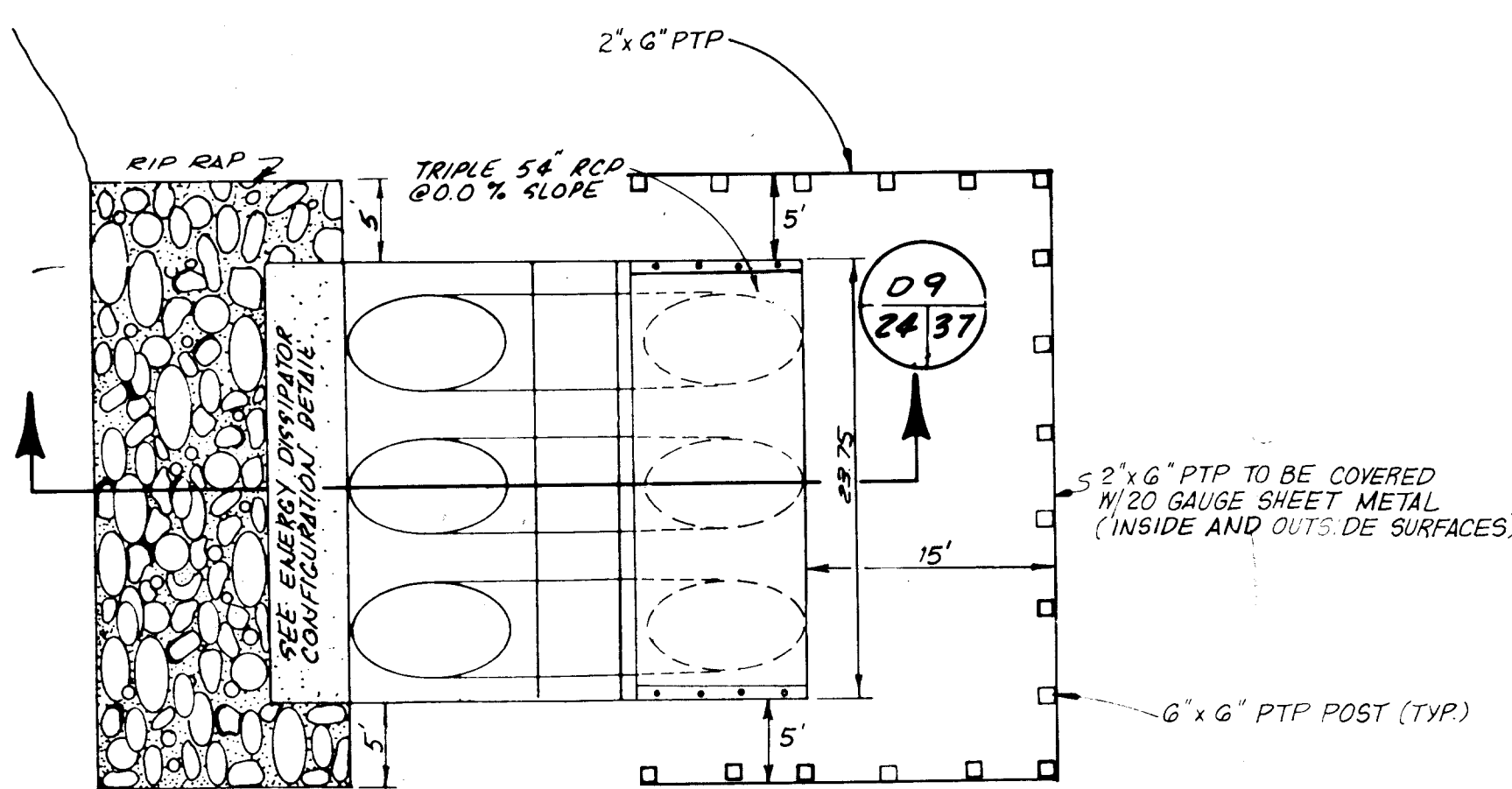
**SWALE GRADING PROFILE
(IN VICINITY OF TYPE 'E' INLET)**

D13
24/37



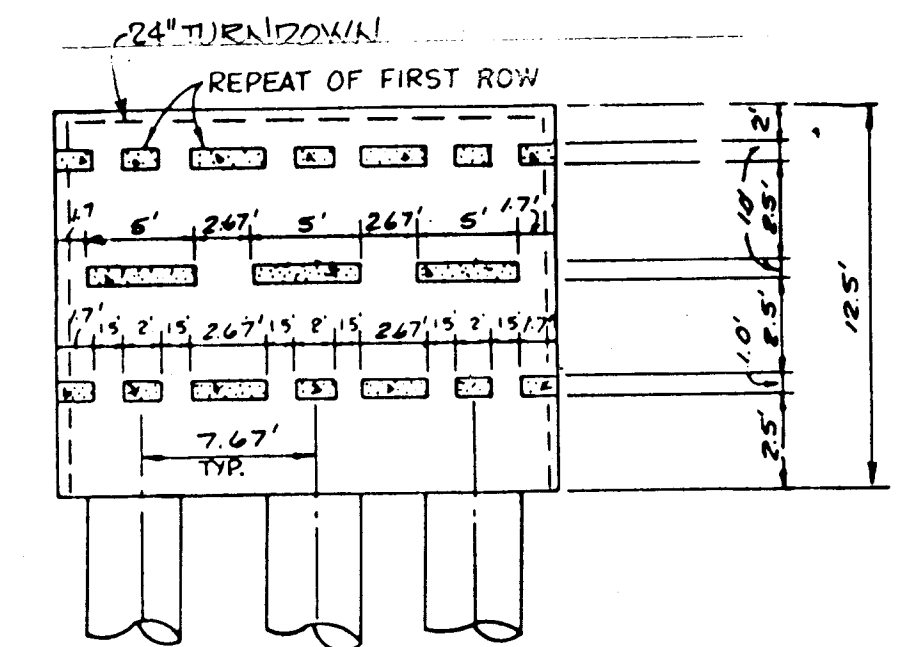
PLAN VIEW

D13
24/37



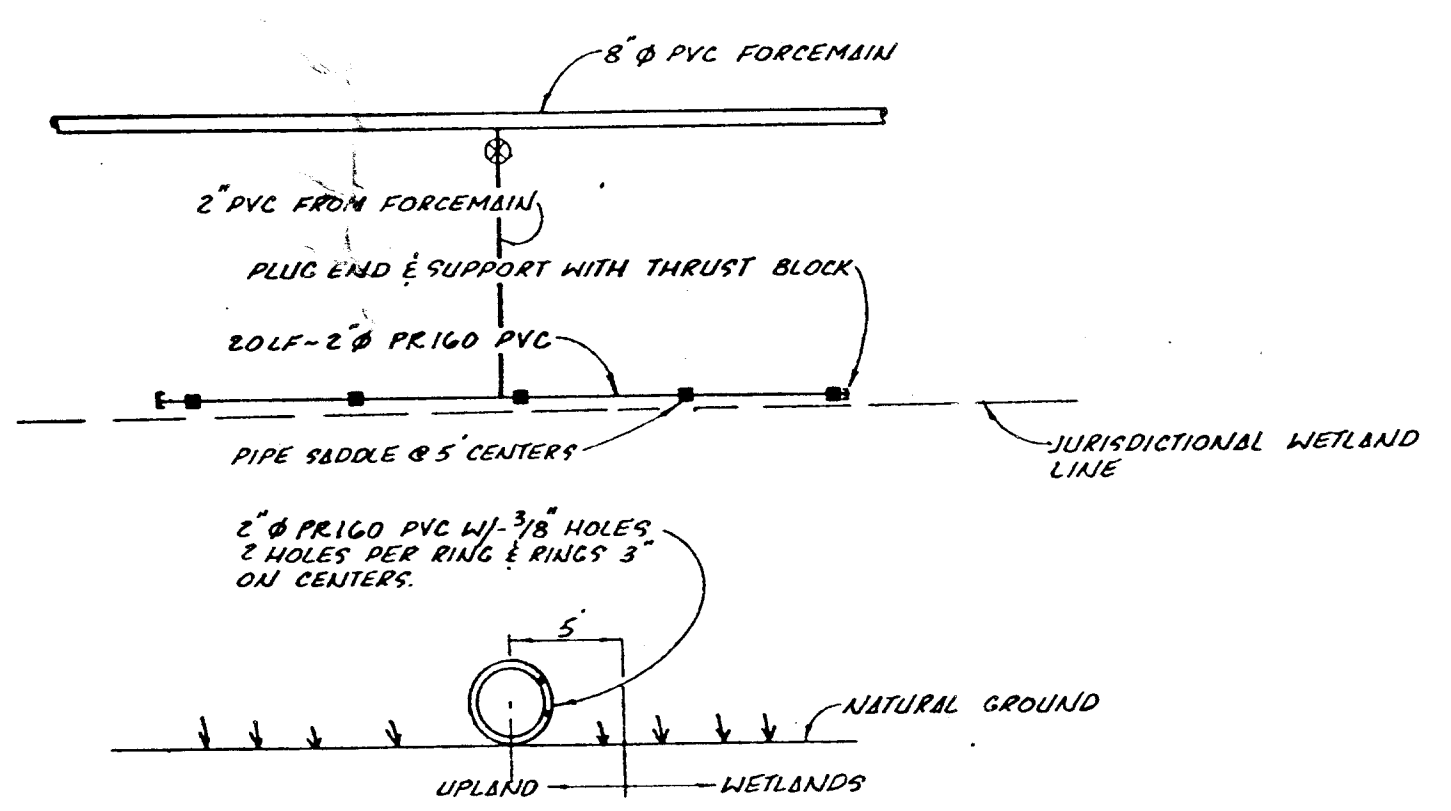
**PLAN VIEW
CLASS I OUTFALL
STRUCTURE DETAIL**

N.T.S.



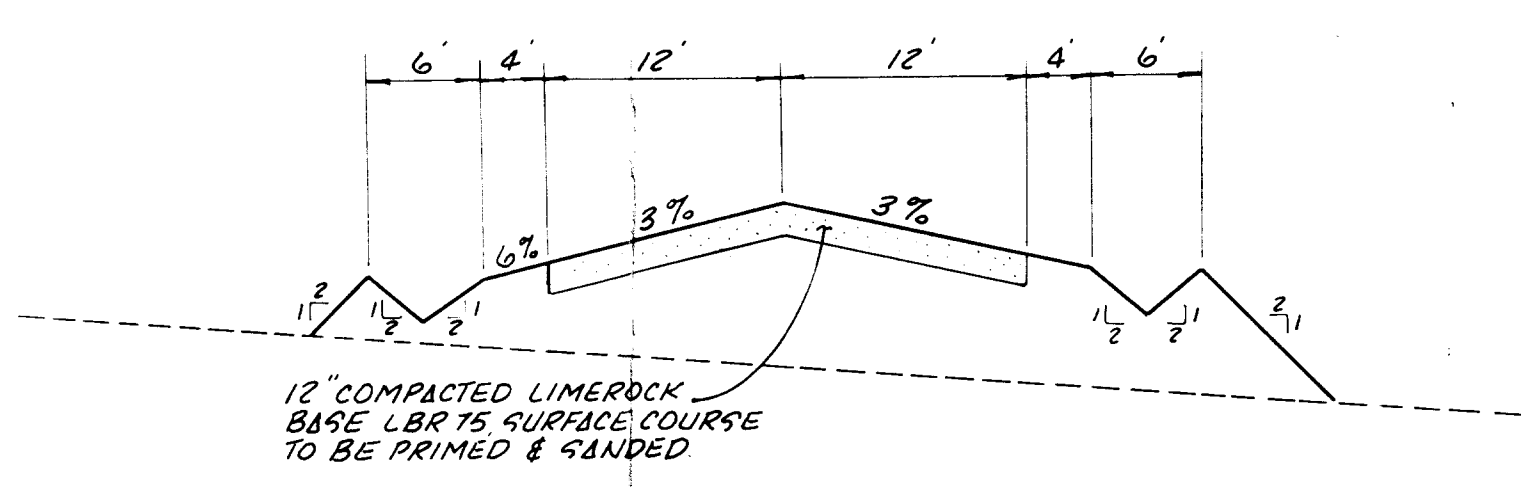
**PLAN VIEW
ENERGY DISSIPATOR
CONFIGURATION DETAIL**

N.T.S.



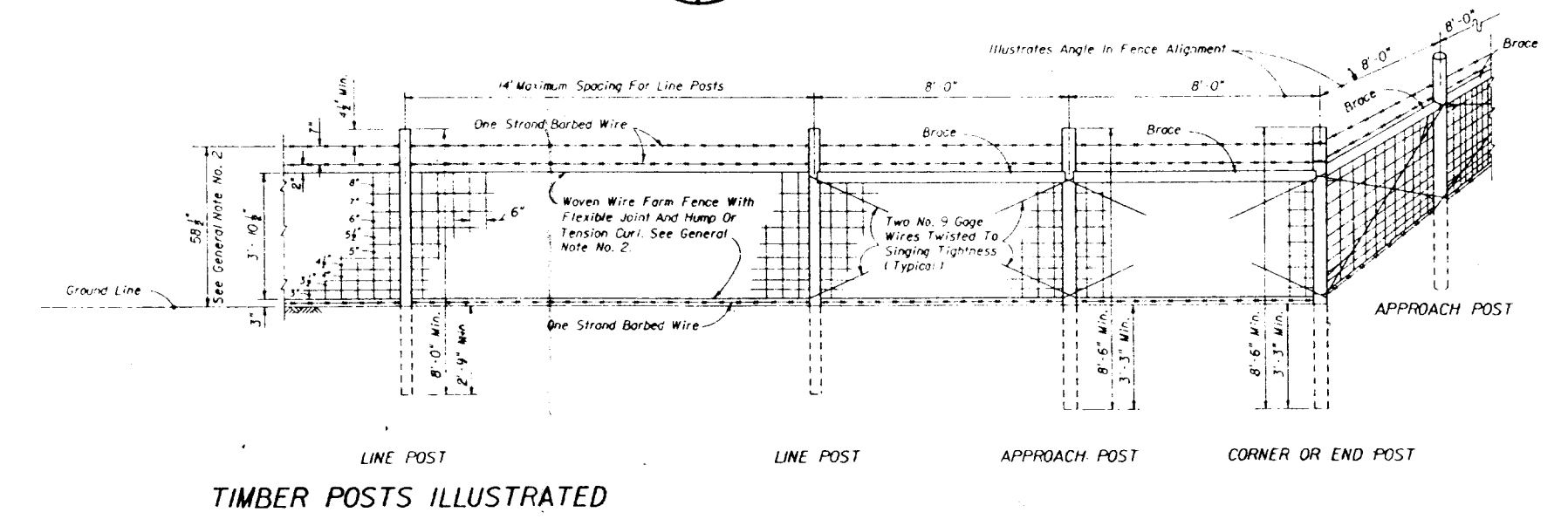
**SPREADER PIPE -
WATER DISTRIBUTION IN WETLANDS**

D17
25/37

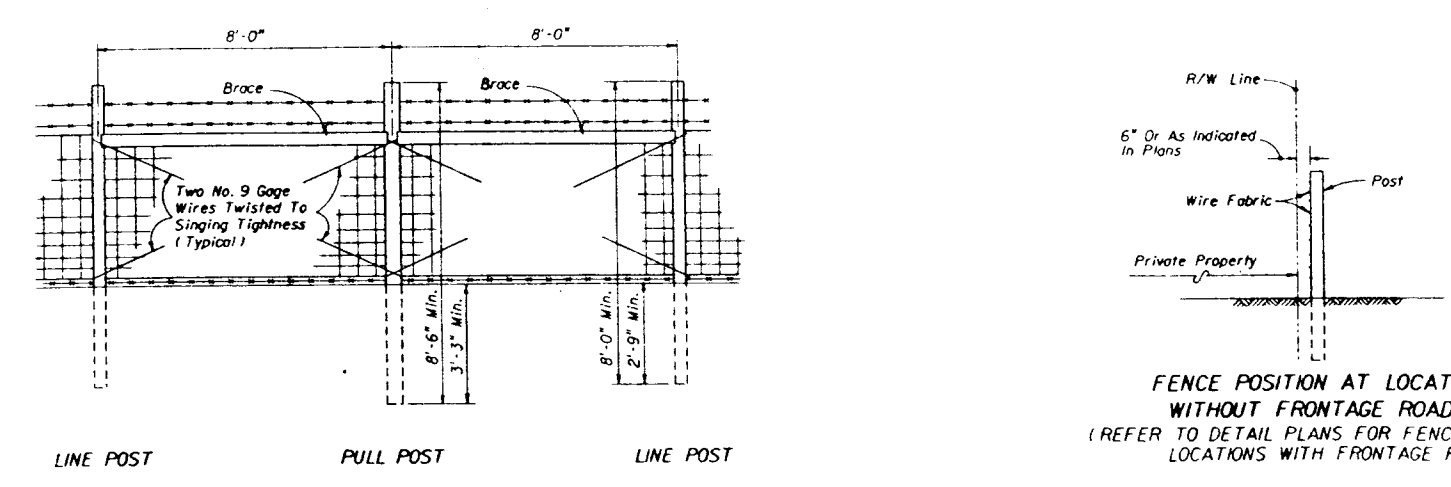


ROADWAY TO NORTHERLY BORROW AREA

D16
6/37

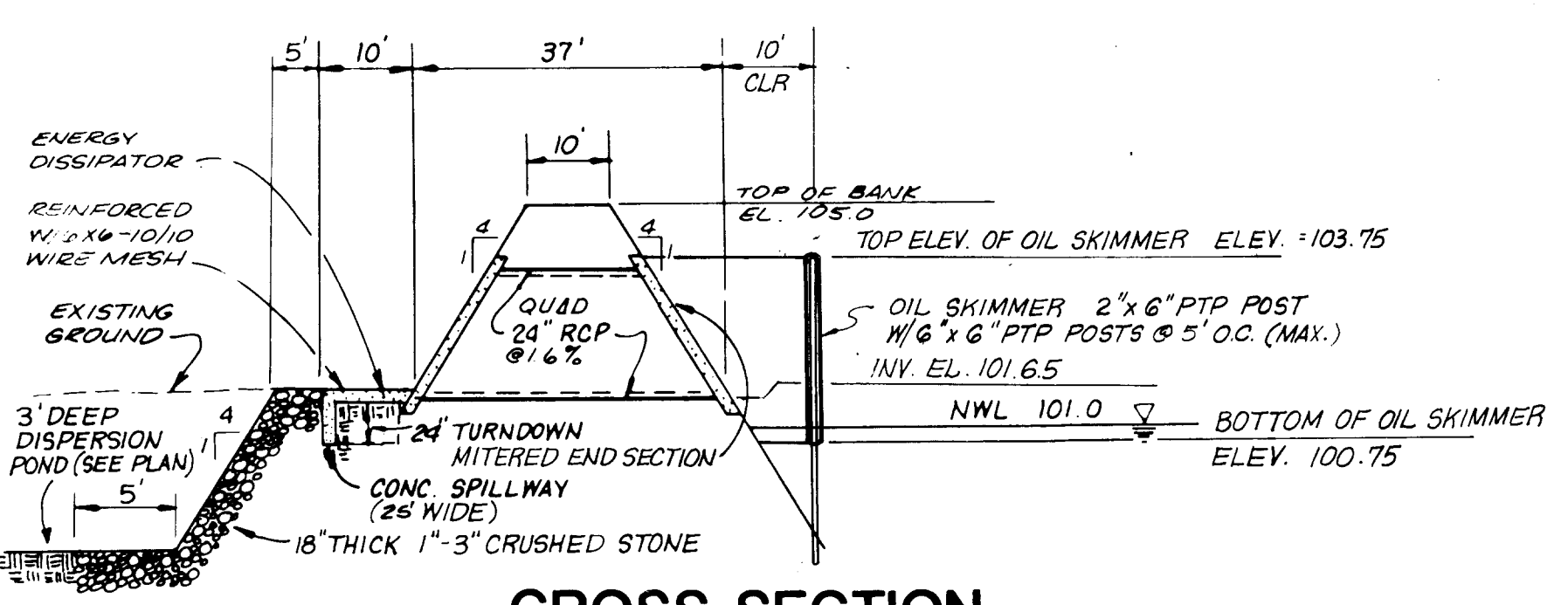


TIMBER POSTS ILLUSTRATED



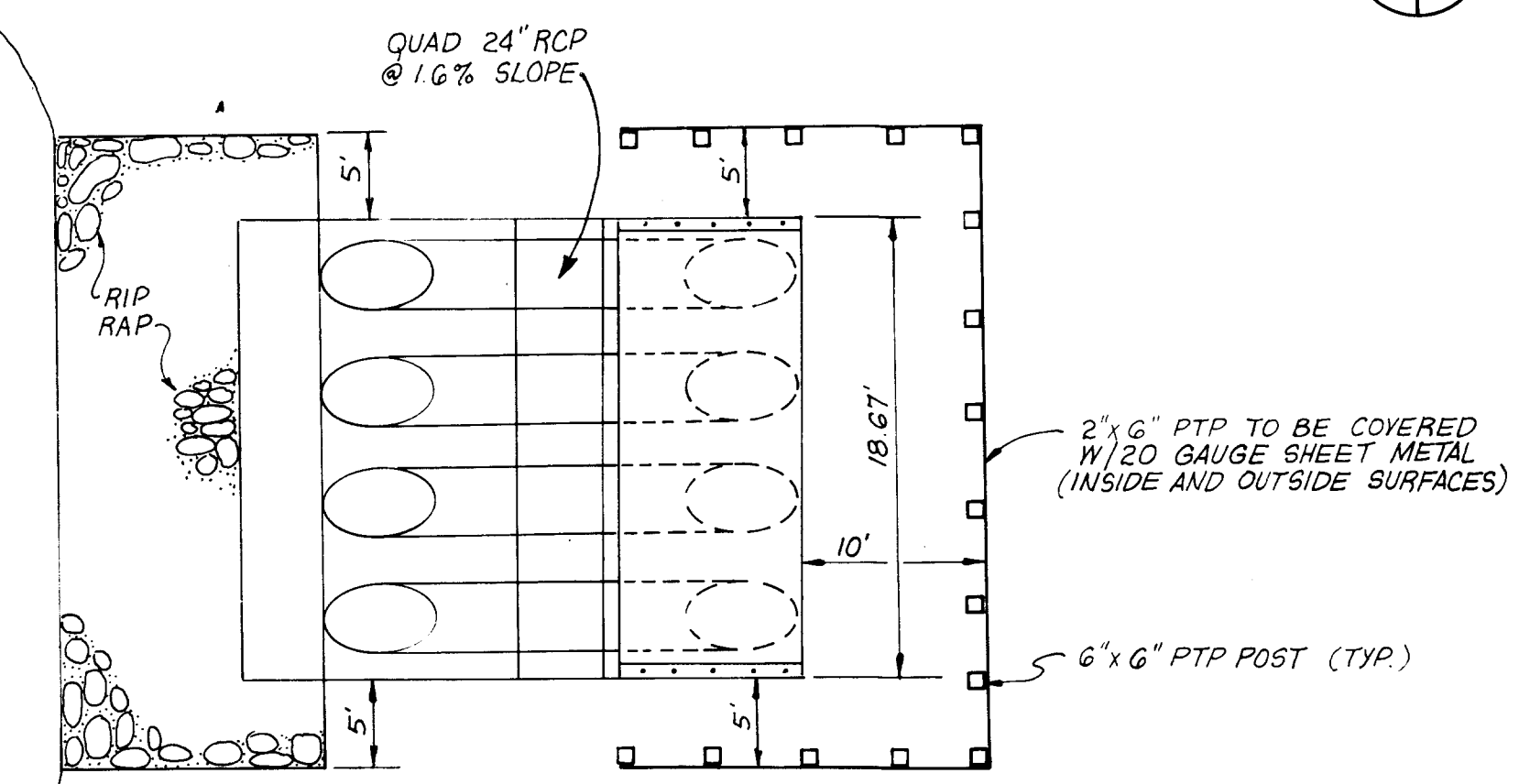
D.O.T. FENCE TYPE A DETAIL

REFER TO D.O.T. TRAFFIC AND DESIGN STANDARDS INDEX NO. 451



**CROSS SECTION
CLASS III OUTFALL STRUCTURE DETAIL**

N.T.S.
D10
24/37



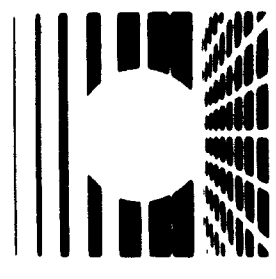
**PLAN VIEW
CLASS III OUTFALL
STRUCTURE DETAIL**

11/02 RELEASED FOR CONSTRUCTION
REVISIONS: CONTRACT DOCUMENTS
1-21-91 AS PER CITY COMMENTS
8-1-91 ADDED OIL SKIMMER TO DETAILS
12-9-91 BID SET
12-6-91 PROVIDED SPREADER PIPE
DETAILS FOR WETLANDS
REVISION CONTRACT NO. 5

ENG. PROJ. NO. 87-13-9
DRAWN BY: PLH
CHECKED BY: JAT
DATE: JUNE 18, 1990

PAVING AND DRAINAGE DETAILS
TRAIL RIDGE LANDFILL
(PLAN A)

England-Thims & Miller, Inc.
Consulting & Design Engineers
JACKSONVILLE, FLORIDA



(DRAWING NO.)

