



1715 North Wetshore Boulevard, Suite 875  
Tampa, Florida 33607  
tel: 813 281-2900  
fax: 813 288-8787

May 8, 2013

Ms. Candia Mulhern  
Utility Services Branch  
Environmental Laboratory  
8864 Government Drive  
New Port Richey, Florida 34654

Subject: Groundwater Contour Maps, Quarter I, 2013 Monitoring Event  
West Pasco Class I and Class II Landfills  
Pasco County, Florida  
Class I Landfill Site Certification No. PA87-23  
Class I Landfill WACS ID # SWD/51/45799  
Class III Landfill Permit No. 26254-001-SO/T3  
Class III Landfill WACS ID # SWD/51/45920

Dear Ms. Mulhern:

Enclosed are six signed and sealed copies of the groundwater elevation contour maps for the West Pasco Class I and Class III Landfills. These maps were prepared based on water level data collected by Pasco County personnel on March 21, 2013. Also enclosed is the water level data table provided by Pasco County. Please provide us with a copy of the report that you submit to the FDEP.

If you have any questions please do not hesitate to call me at or David Rojas at (813)-281-2900.

Sincerely,

A handwritten signature in blue ink, reading 'William T. Beeson'. The signature is fluid and cursive, with a long horizontal stroke at the end.

William T. Beeson, P.G.  
Senior Project Manager  
Camp Dresser & McKee Inc.

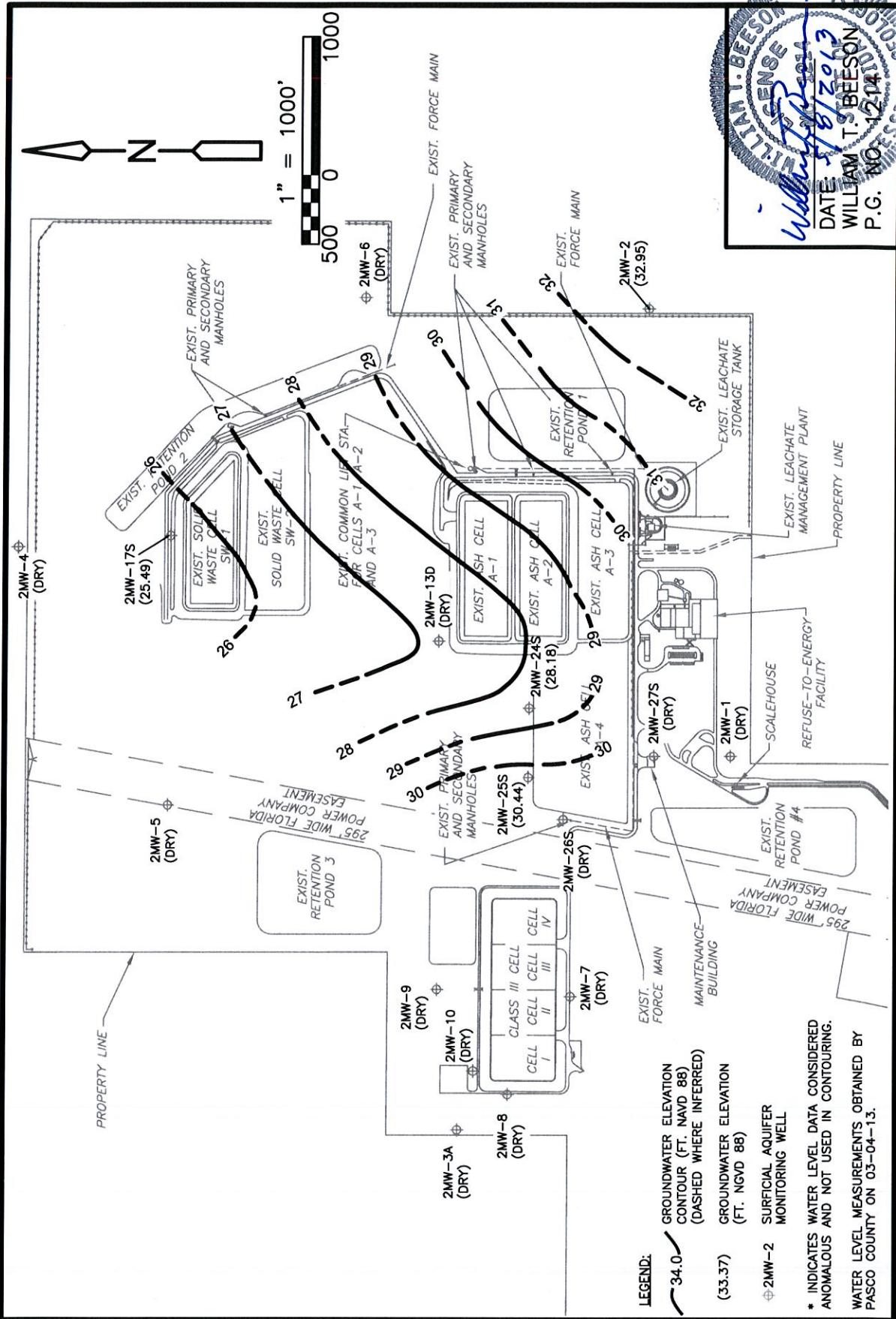
Enclosure: West Pasco Class I and Class III Landfill Groundwater Contour Maps and Water Level Table

cc: John Power, Pasco County Resource Recovery Facility (letter only)



USER: nunesd  
DATE: May 06, 2013 3:17pm

PW:\DACPWPAPP2\PL1\Documents\6104\95396\03 Reports and Studies\09 CADD Figures and Graphics\1st QTR  
2013\FIG-SH-2.dwg  
© 2013 CDM SMITH ALL RIGHTS RESERVED.  
REUSE OF DOCUMENTS: THESE DOCUMENTS AND DESIGNS PROVIDED BY PROFESSIONAL SERVICE, INCORPORATED HEREIN, ARE THE PROPERTY OF  
CDM SMITH AND ARE NOT TO BE USED, IN WHOLE OR PART, FOR ANY OTHER PROJECT WITHOUT THE WRITTEN AUTHORIZATION OF CDM SMITH.



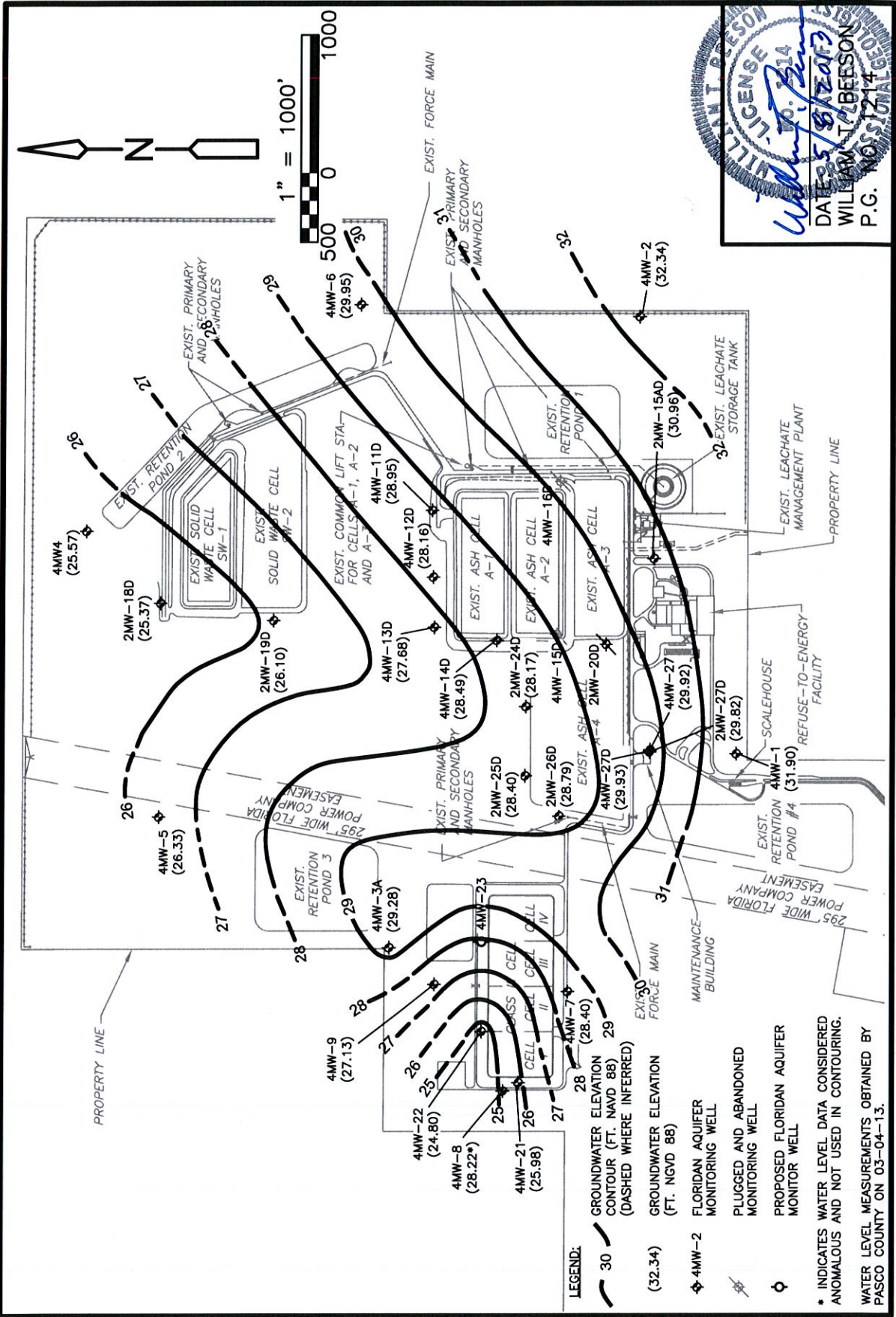
Potentiometric Surface of Surficial Aquifer, 1st Quarter 2013  
West Pasco Resource Recovery Facility  
Spring Hill, Pasco County, Florida





2013 FIG-SH-1.dwg  
 @2012 CDM SMITH ALL RIGHTS RESERVED.  
 CDM SMITH AND ARE NOT TO BE USED, IN WHOLE OR PART, FOR ANY OTHER PROJECT WITHOUT THE WRITTEN AUTHORIZATION OF CDM SMITH.  
 PW:\DACPWP\22\PL1\Documents\6104\95396\03 Reports and Studies\09 CADD Figures and Graphics\1st QTR

USER: nunesd  
 DATE: May 06, 2013 3:43pm



**CDM  
 Smith**

Potentiometric Surface of Floridan Aquifer, 1st Quarter 2013  
 West Pasco Resource Recovery Facility  
 Spring Hill, Pasco County, Florida

# RESOURCE RECOVERY

## WATER LEVEL 2013 QUARTER-I

WELL I.D.	DATE DAY- MONTH	SAMPLE TIME 24hr.	T.O.P. ELEVATION	STATIC H2O LEVEL	N.G.V.D.	WELL I.D.	DATE DAY- MONTH	SAMPLE TIME 24hr.	T.O.P. ELEVATION	STATIC H2O LEVEL	N.G.V.D.
<b>2MW1</b>	4-Mar	0800	49.95	DRY	DRY	<b>2MW-13D</b>	4-Mar	1047	52.39	DRY	DRY
<b>4MW1</b>	4-Mar	0805	50.34	18.44	31.90	<b>4MW-13D</b>	4-Mar	1045	54.04	26.36	27.68
<b>2MW2</b>	4-Mar	0820	56.41	23.46	32.95	<b>4MW-14D</b>	4-Mar	1042	52.00	23.51	28.49
<b>4MW2</b>	4-Mar	0825	56.11	23.77	32.34	<b>2MW-15DA</b>	4-Mar	0810	54.71	23.75	30.96
<b>2MW3A</b>	4-Mar	0925	50.01	DRY	DRY	<b>2MW-17S</b>	4-Mar	0850	53.42	27.93	25.49
<b>4MW3A</b>	4-Mar	0920	52.92	23.64	29.28	<b>2MW-18D</b>	4-Mar	0855	52.75	27.38	25.37
<b>2MW4</b>	4-Mar	0840	54.77	DRY	DRY	<b>2MW-19D</b>	4-Mar	0900	52.25	26.15	26.10
<b>4MW4</b>	4-Mar	0845	50.81	25.24	25.57	<b>4MW 21</b>	4-Mar	1505	51.46	25.48	25.98
<b>2MW5</b>	4-Mar	0910	49.17	DRY	DRY	<b>4MW 22</b>	4-Mar	1500	53.44	28.64	24.80
<b>4MW5</b>	4-Mar	0912	49.06	22.73	26.33	<b>2MW-24S</b>	4-Mar	1040	50.37	22.19	28.18
<b>2MW6</b>	4-Mar	0830	56.11	DRY	DRY	<b>2MW-24D</b>	4-Mar	1038	50.55	22.38	28.17
<b>4MW6</b>	4-Mar	0835	55.95	26.00	29.95	<b>2MW-25S</b>	4-Mar	1032	47.84	17.40	30.44
<b>2MW7</b>	4-Mar	930	52.75	DRY	DRY	<b>2MW-25D</b>	4-Mar	1030	47.87	19.47	28.40
<b>4MW7</b>	4-Mar	0932	52.62	24.22	28.40	<b>2MW-26S</b>	4-Mar	1025	54.16	23.00	DRY
<b>2MW8</b>	4-Mar	0950	51.97	DRY	DRY	<b>2MW-26D</b>	4-Mar	1020	54.13	25.34	28.79
<b>4MW8</b>	4-Mar	0955	51.87	23.54	28.33	<b>2MW-27S</b>	4-Mar	1005	50.44	DRY	DRY
<b>2MW9</b>	4-Mar	0940	52.29	DRY	DRY	<b>2MW-27D</b>	4-Mar	1007	50.32	20.47	29.85
<b>4MW9</b>	4-Mar	0942	52.78	25.65	27.13	<b>4MW-27</b>	4-Mar	1009	49.60	19.68	29.92
<b>2MW10</b>	4-Mar	0945	52.63	DRY	DRY	<b>4MW-27D</b>	4-Mar	1011	49.28	19.35	29.93
<b>4MW-11D</b>	4-Mar	1055	65.00	36.05	28.95						
<b>4MW-12D</b>	4-Mar	1050	55.03	26.87	28.16						

NOTES: