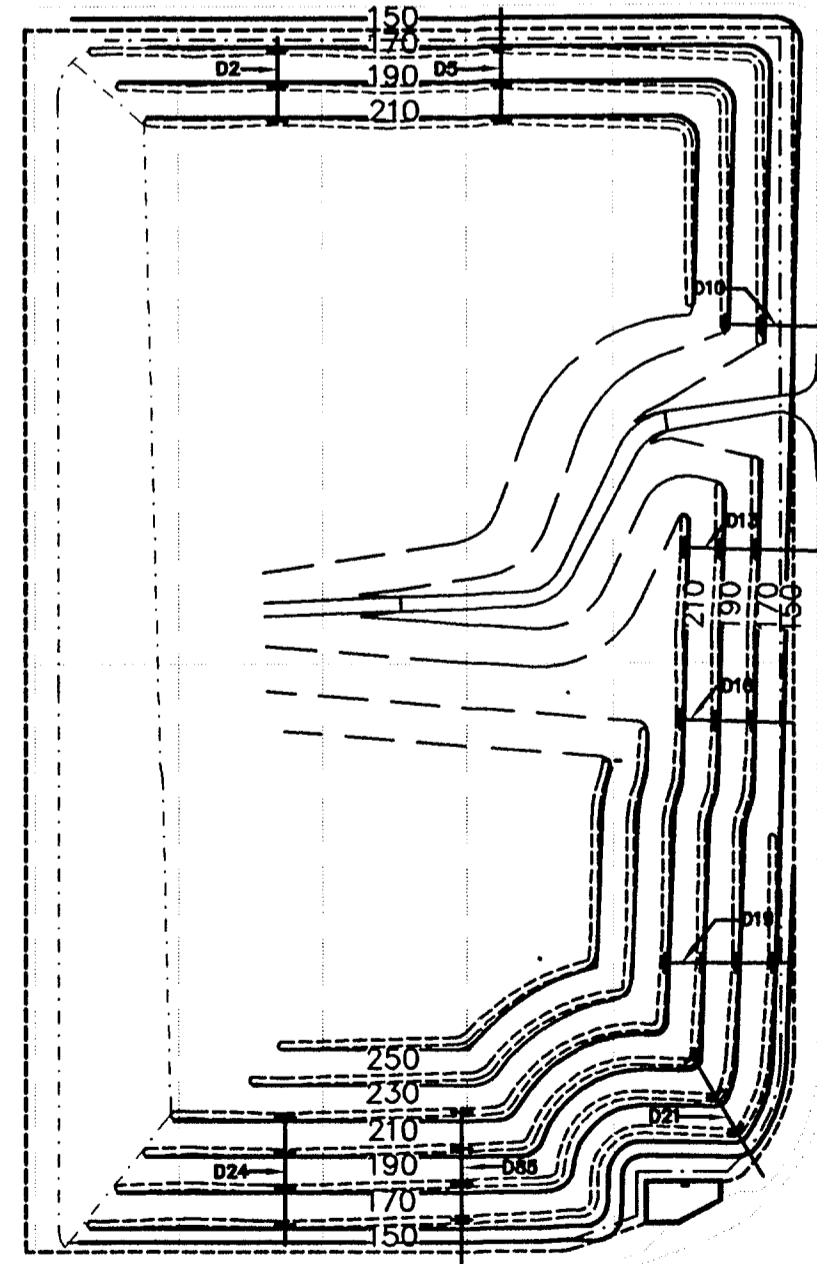
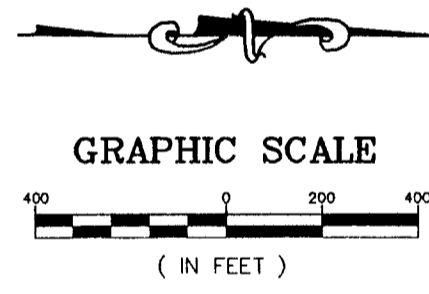
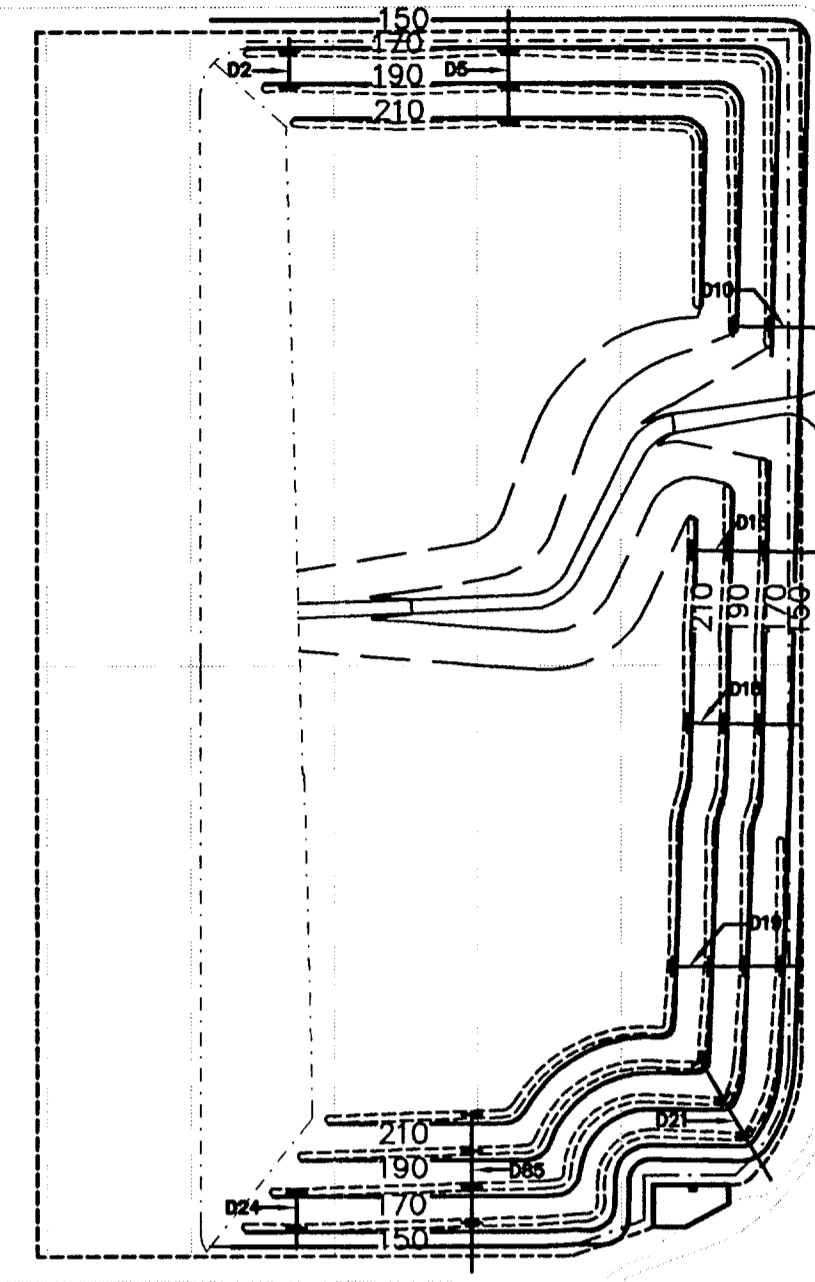
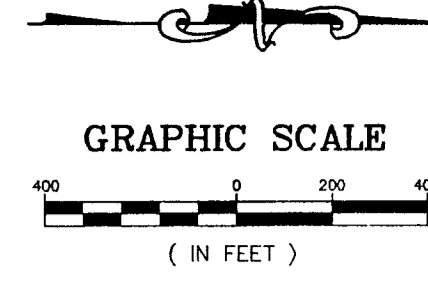


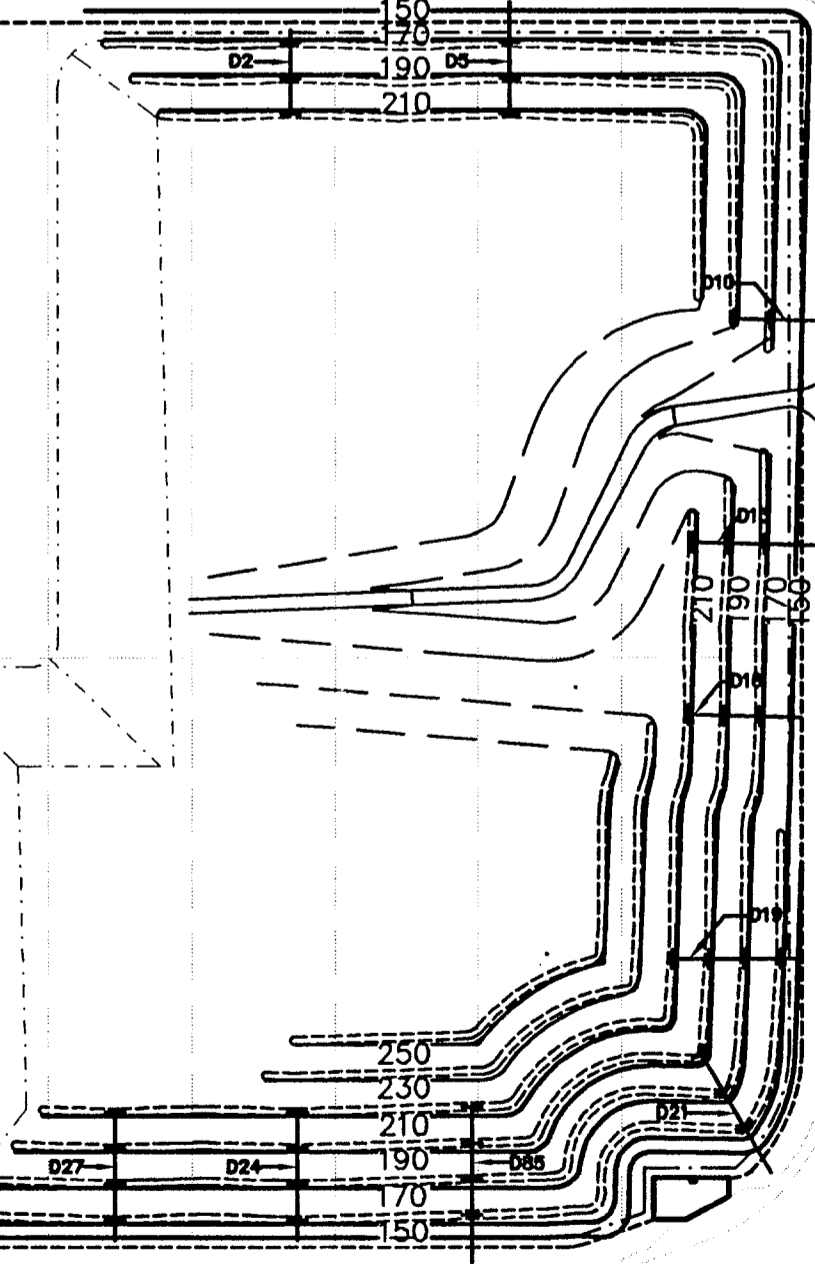
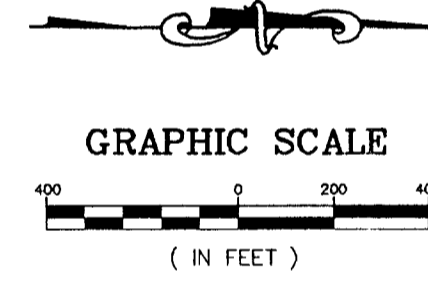
FILL PHASE 1



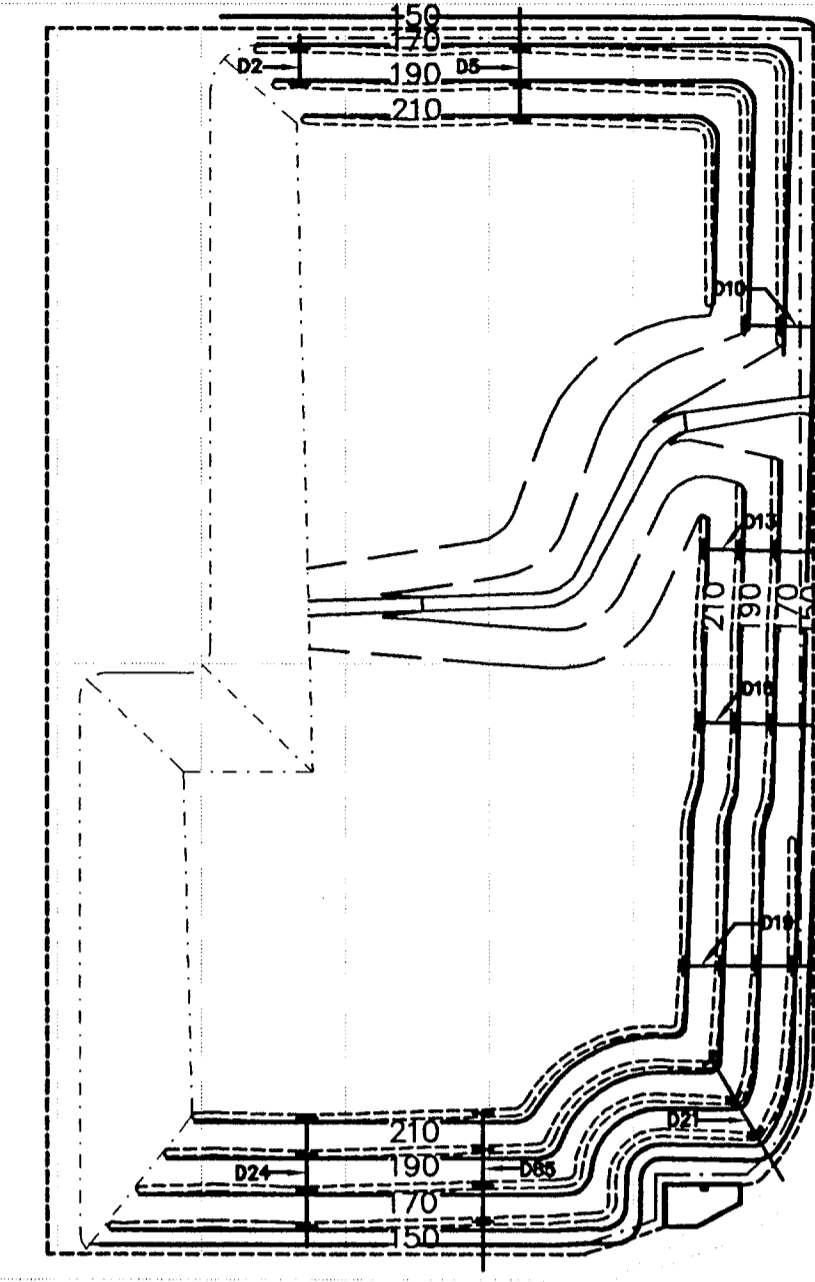
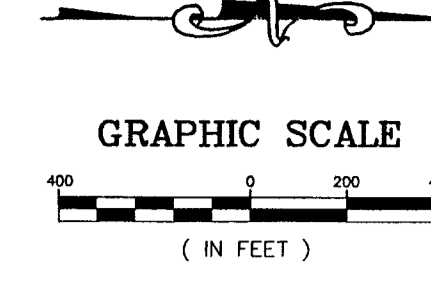
FILL PHASE 4



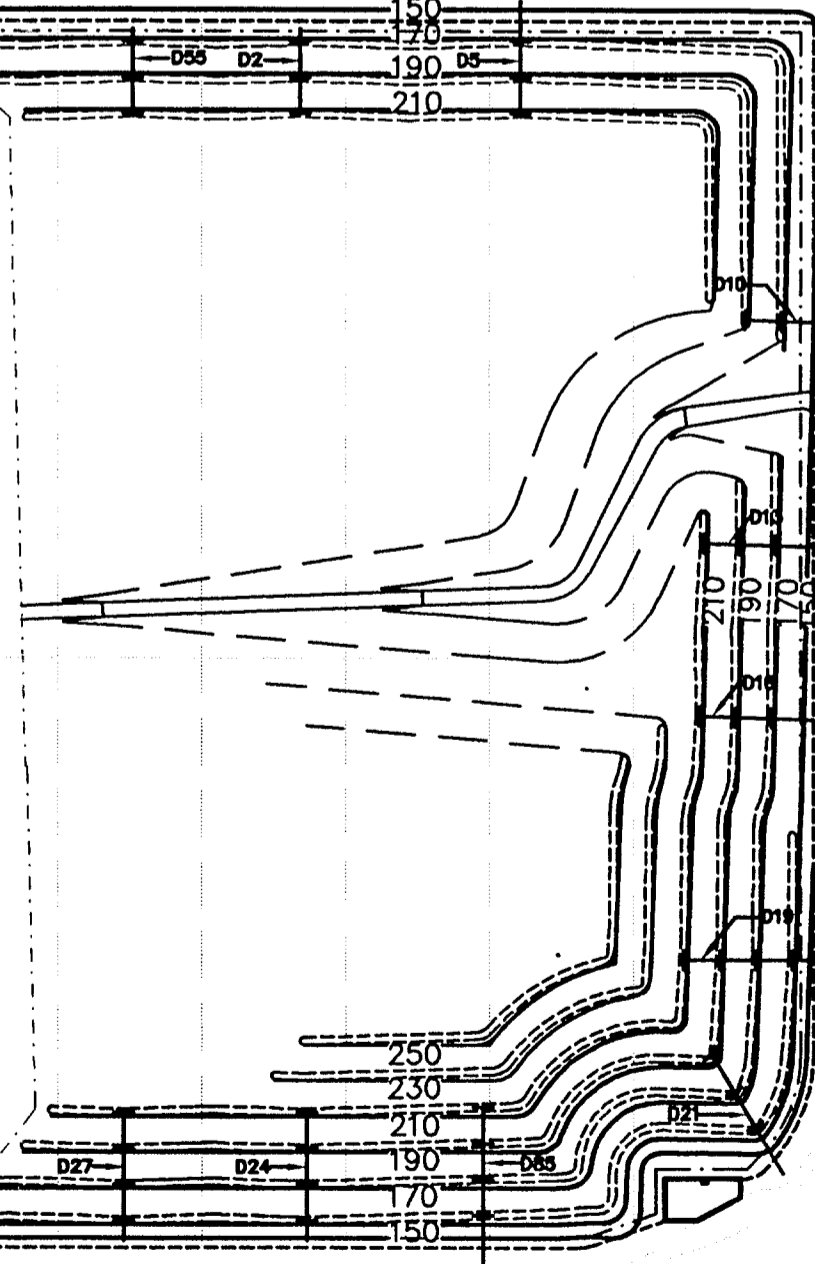
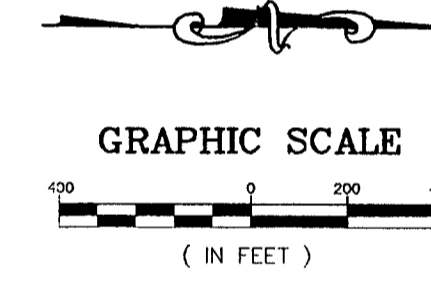
FILL PHASE 2



FILL PHASE 5



FILL PHASE 3



FILL PHASE 6

LEGEND

- 150— FINAL CONTOUR
- - - - - LIMITS OF LINER
- - - - - LINER PHASE LINE
- - - - - LIMITS OF FILL
- - - - - ACCESS ROAD
- - - - - ROADWAY
- - - - - TERRACE
- + + + + + DOWNCOMER PIPE
- ////// 10' BERM

NOTE:
FILL PHASES MAY BE CHANGED
DUE TO OPERATIONAL NEEDS.

RECEIVED

JAN 04 2001
STATE OF FLORIDA
DEPARTMENT OF ENVIRONMENTAL PROTECTION

SUBMITTED TO DEP. 10-28-96

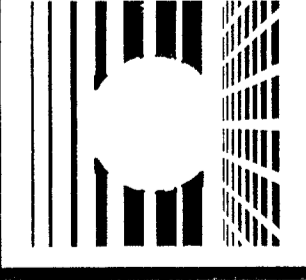
REVISIONS:
2-25-00 REVISED FILL PHASES 4, 5 & 6
11-6-00 REVISED FILL PHASES 5 & 6
TO REMOVE WESTERN HIGH RISE
(EL. 250 & 250)

ETM. NO. E 98 - 49	
DRAWN BY: J.B.C.	
DESIGNED BY: J.B.C.	
CHECKED BY: D.C.M.	
DATE: OCTOBER 28, 1998	

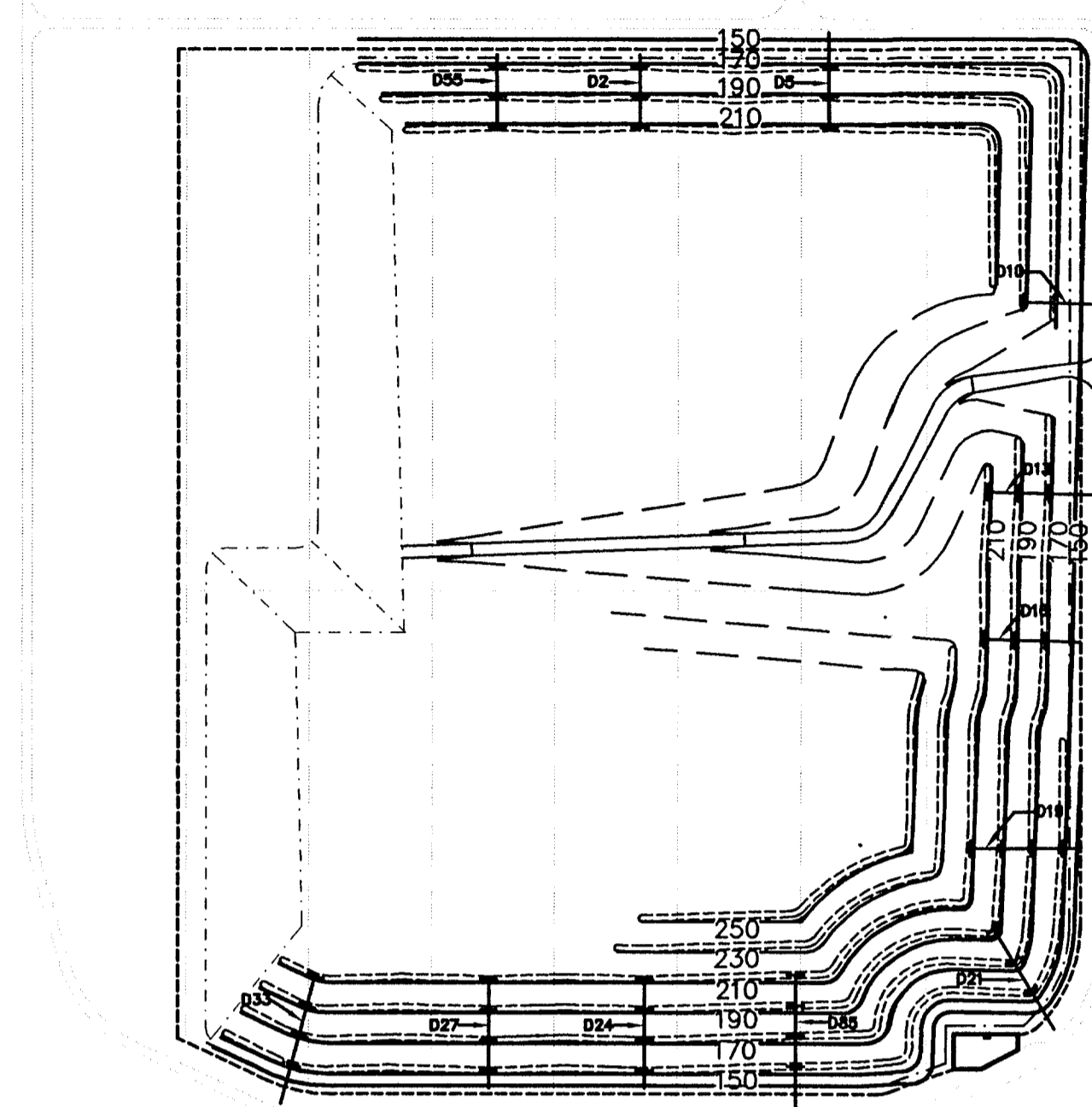
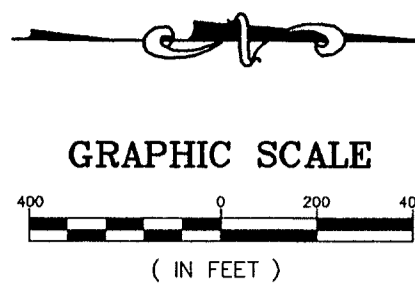
PERMIT DOCUMENT

FILL PHASING PLAN
TRAIL RIDGE LANDFILL PERMIT RENEWAL
FOR
TRAIL RIDGE LANDFILL, INC.

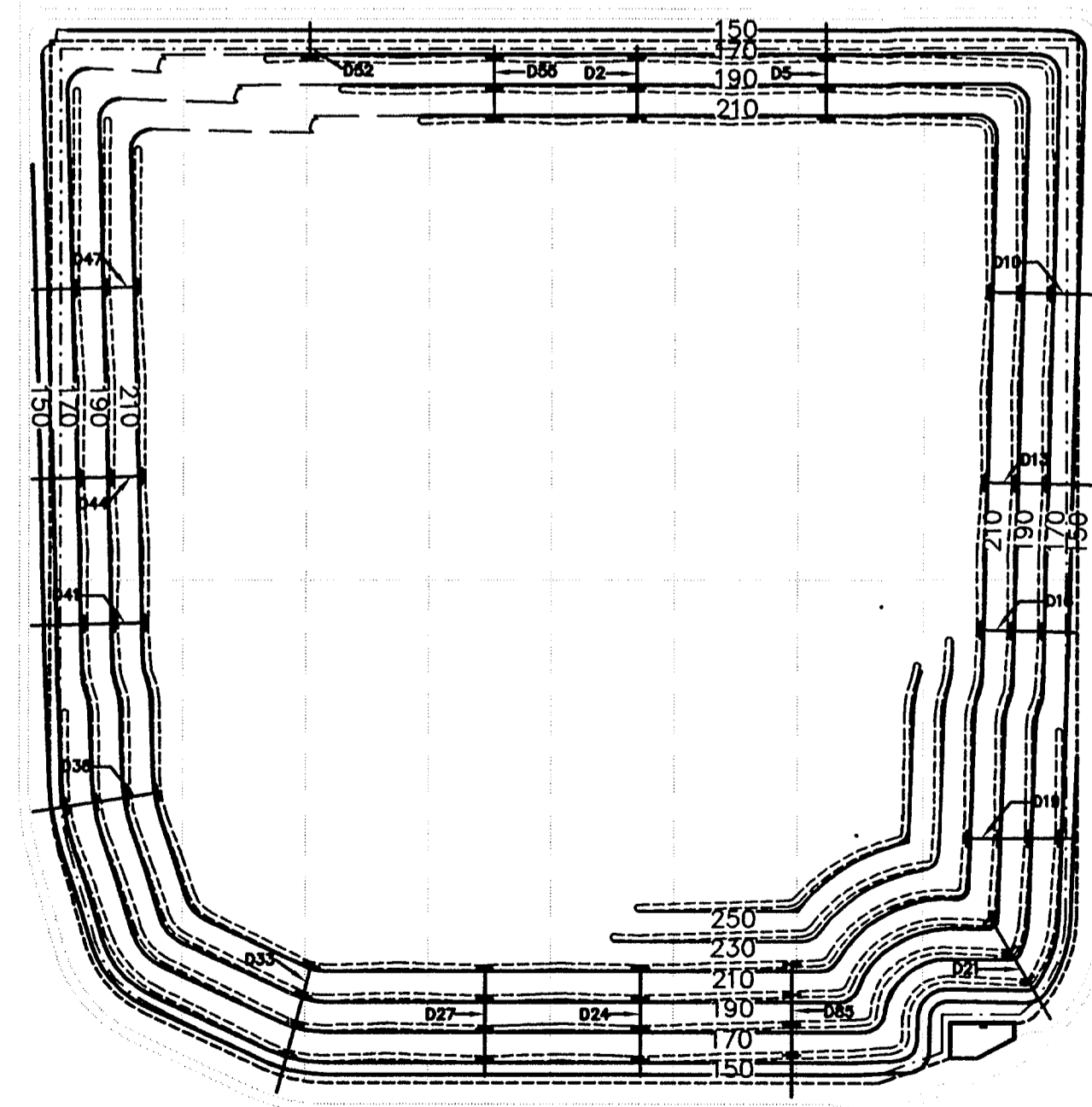
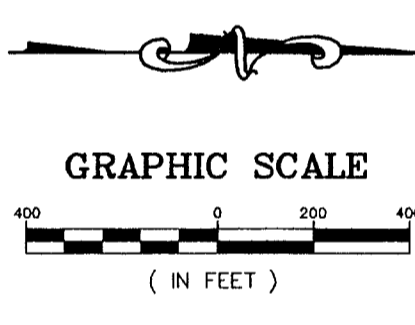
England, Thims & Miller, Inc.
Consulting & Design Engineers
3131 ST. JOHNS BLUFF ROAD SOUTH
JACKSONVILLE, FLORIDA 32246
PHONE NUMBER (904) 642-8990 FAX NUMBER (904) 646-9485



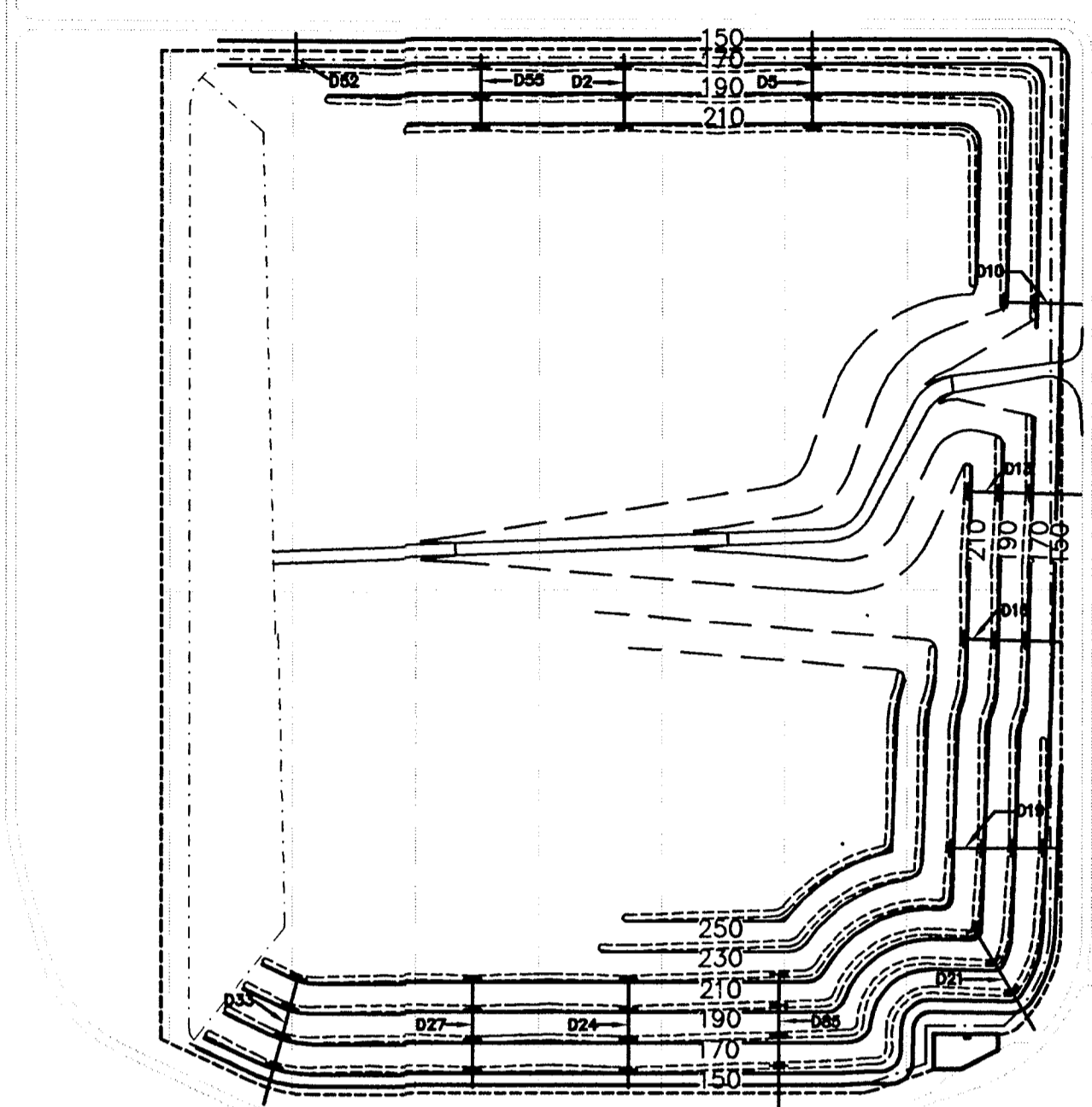
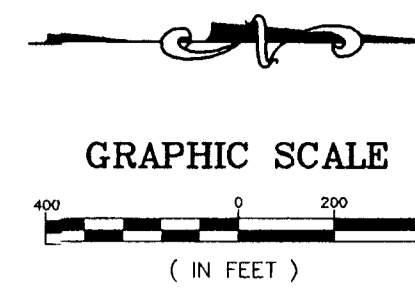
DRAWING NO.



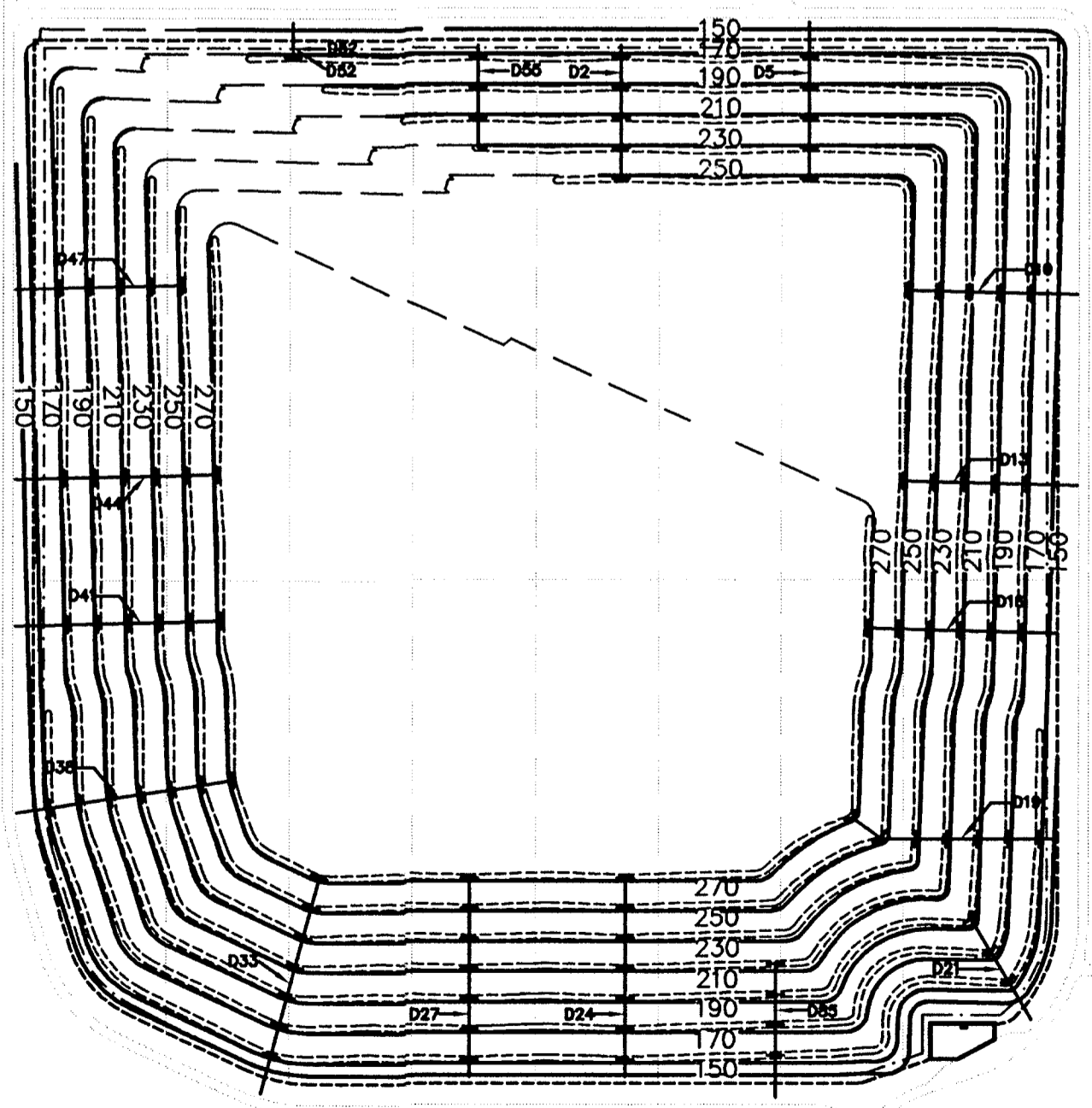
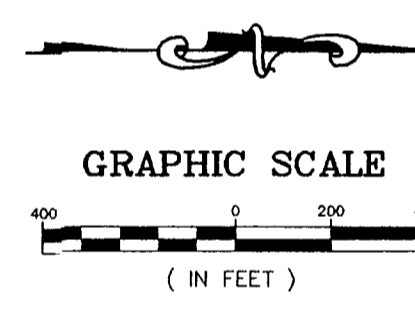
FILL PHASE 7



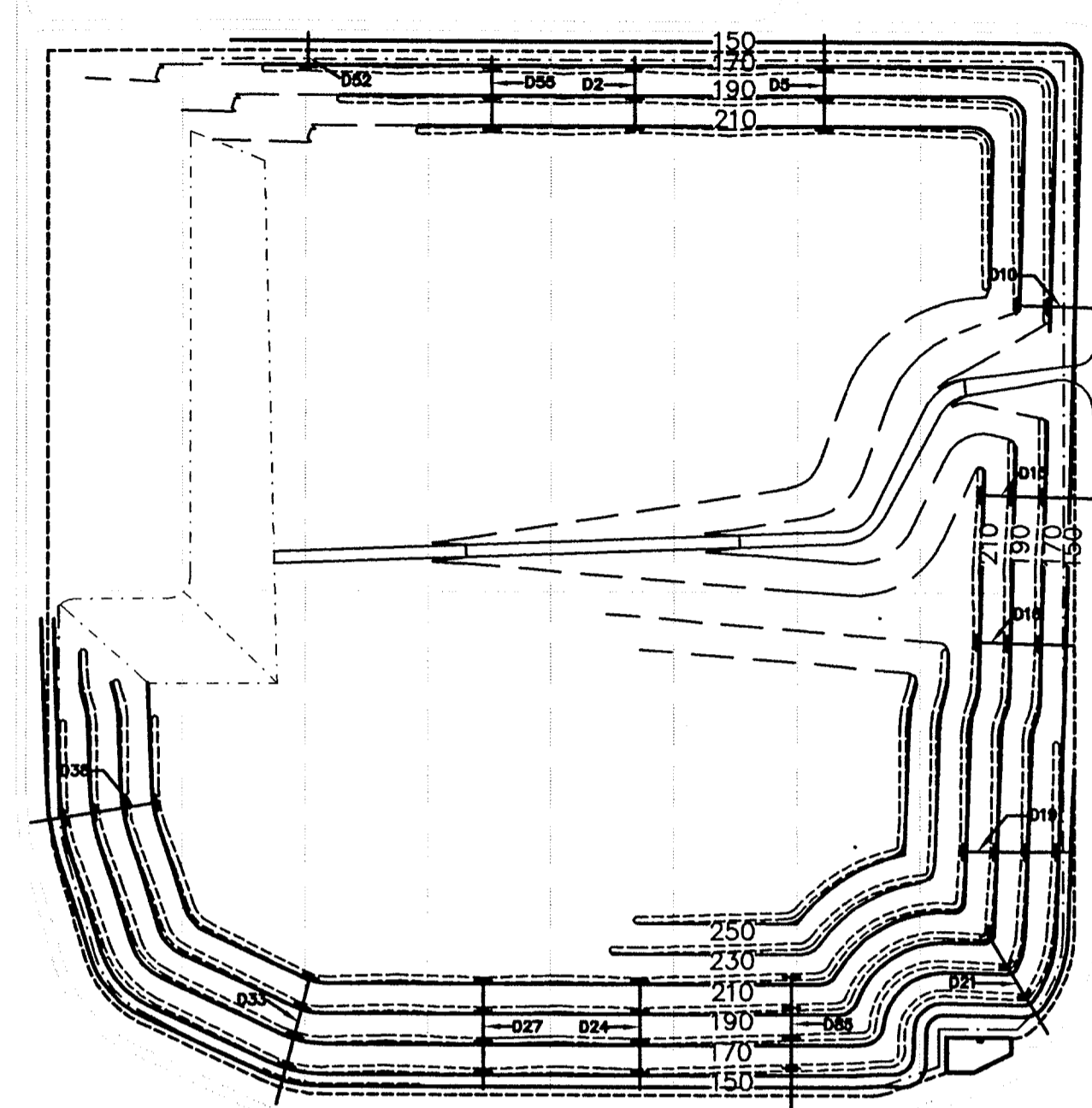
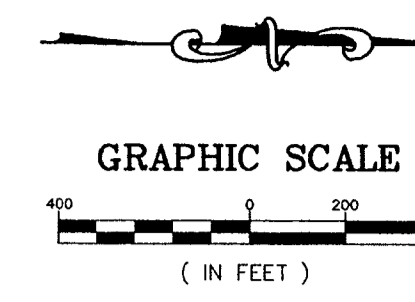
FILL PHASE 10



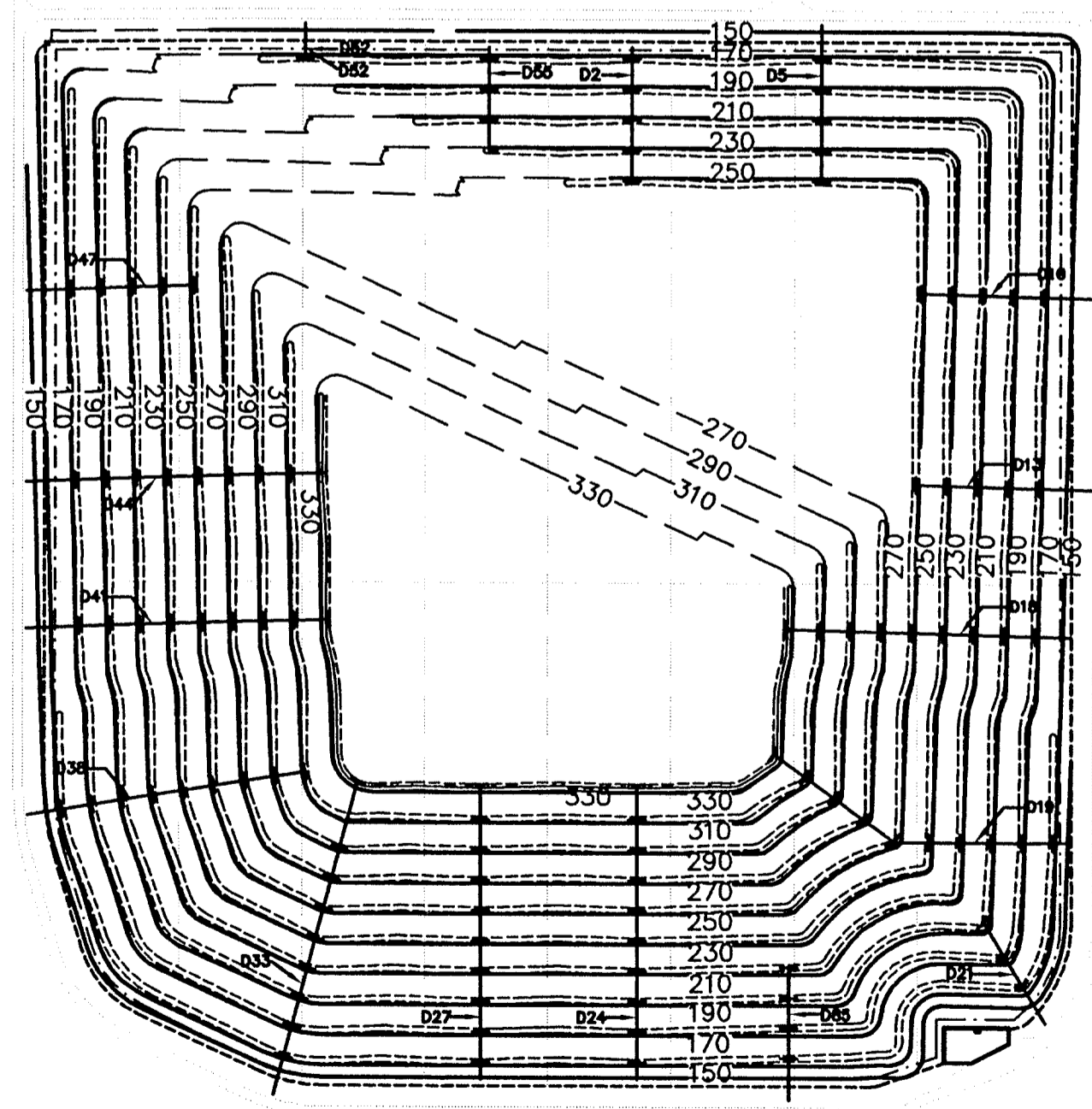
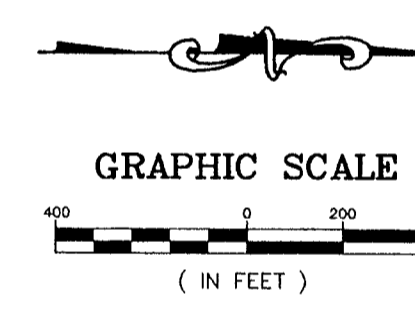
FILL PHASE 8



FILL PHASE 11



FILL PHASE 9



FILL PHASE 12

- LEGEND**
- 150— FINAL CONTOUR
 - - - - - LIMITS OF LINER
 - LINER PHASE LINE
 - - - - - LIMITS OF FILL
 - - - - - ACCESS ROAD
 - ROADWAY
 - ==== TERRACE
 - + + + DOWNCOMER PIPE
 - ////// 10' BERM
- NOTE:
FILL PHASES MAY BE CHANGED
DUE TO OPERATIONAL NEEDS.

PERMIT DOCUMENT

FILL PHASING PLAN
FOR
TRAIL RIDGE LANDFILL PERMIT RENEWAL
FOR
TRAIL RIDGE LANDFILL, INC.

England-Thims & Miller, Inc.
Consulting & Design Engineers
3131 ST. JOHNS BLUFF ROAD SOUTH
JACKSONVILLE, FLORIDA 32246
PHONE NUMBER (904) 642-8990 FAX NUMBER (904) 646-9485

ETM. NO. E 96 - 49
DRAWN BY: J.B.C.
DESIGNED BY: J.B.C.
CHECKED BY: D.C.M.
DATE: OCTOBER 28, 1998

REVISIONS:
2-25-00 REVISED FILL PHASES 7, 10
TO INCLUDE ELEVATIONS 230 & 250
12-6-00 REVISED FILL PHASES 7, 10
TO INCLUDE ELEVATION HIGH RISE
(E.L. 230' & 250')

SUBMITTED TO DEP: 10-28-96