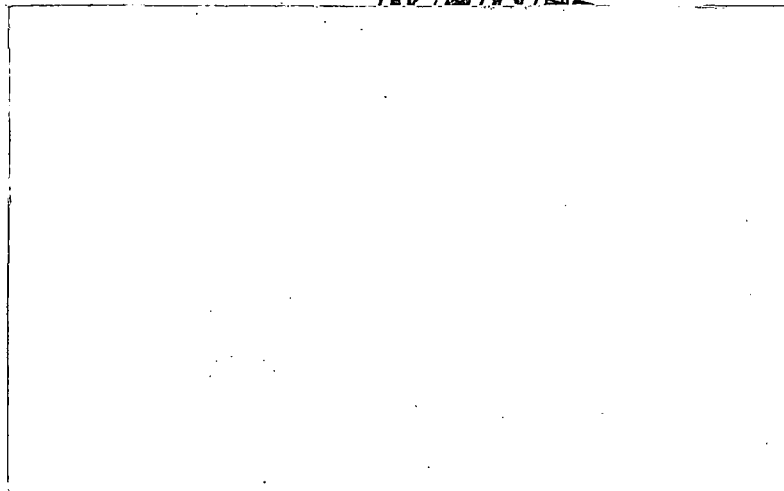


DECEMBER

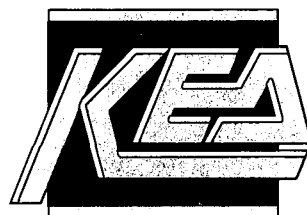


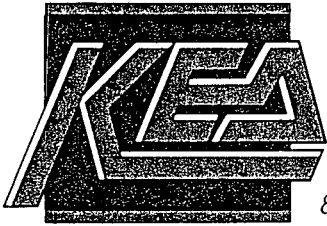
Pasco Co

MRF

45796

E. Pasco Trans STA?





**King Engineering Associates, Inc.**

8406 Massachusetts Avenue, Suite A-2 • New Port Richey, Florida 34653 • (813) 846-0904 • Fax: (813) 846-7017

**Engineers**

**Planners**

**Scientists**

**Surveyors**

September 12, 1994

TAL

Ms. Susan Pelz, E.I.  
Florida Department of Environmental Protection  
3804 Coconut Palm Drive  
Tampa, FL 33619

**RECEIVED**  
SEP 13 1994

Re: Pasco County  
Materials Recovery Facility  
Pending Permit No. SC51-252834

Department of Environmental Protection  
SOUTHWEST DISTRICT  
BY \_\_\_\_\_

Dear Ms. Pelz:

King Engineering Associates, Inc. (KEA) and Pasco County are in receipt of your letter (attached) regarding the referenced permit application. Enclosed please find a copy of Browning-Ferris Industries' (BFI) letter dated September 8, 1994, which addresses your comments. We have reiterated these responses for your convenience.

**Comment #1:** The information submitted indicates that bags will be removed manually. Will the bags be disposed of or recycled? Is this quantity included in the residual stream of 5-10%?

**Response:** Plastic base (blue bags) will be recycled if a market can be found. The market for various-resin, mixed film plastics has traditionally not been stable. The bags are included in the stated residual stream of 5-10%.

**Comment #2:** The information submitted indicates that the "sorting system [including the trommel, air classifier, and magnet] and its conveyor are shown on the Drawings on Sheet 3." However, the trommel, air classifier and magnet are not shown on Drawing 3. The system shown on Drawing 3 indicates a hand-sort operation only, with a single conveyor and six storage bins for separated materials. Trommels, air classifiers and magnet systems typically have two output streams, each with a specific associated conveyor or discharge bin. (Please revise Drawing 3 to show the trommel screen, air classifier, magnet and associated conveyor systems.)

**Response:** Drawing #3 did not show the trommel, air classifier and magnet. The attached drawing from our equipment vendor shows these



features. The trash conveyors are located beneath the two sorting lines and travel in a reverse direction to discharge in the trash container located under the magnet.

**Comment #3:** The information provided indicates that "an air classifier will not sort with 100% accuracy." The information submitted does not adequately address the Department's request. Typically, air classifiers separate shredded materials, not whole bottles. Please provide a detailed description of the process by which whole, mixed containers are separated by air classification. Please provide any references upon which this operation is based.

**Response:** The air classifier for this application is designed to blow light objects (i.e., aluminum, plastics, and paper) to the aluminum and plastic sort conveyor, and allows the heavier material (i.e., glass) to chop and continue to the glass sort conveyor. Paper will be pulled off the aluminum and plastic sort line, and placed onto the reverse-direction trash conveyor. This configuration is working very well at BFI's Recyclery™ in Broward County, Florida.

**Comment #4:** The Department is aware that several contractors/consultants may be utilized in this project. However, the Department requires complete construction drawings and specifications for permit review. The information provided is sufficient for the baler and baler feed conveyor. However, the information submitted on the "sorting system" is simply a vendor quotation. Please provide details (i.e., shop drawings, manufacturer specification sheets, etc.) for all equipment, i.e., magnet, air classifier, trommel, including size, capacity, manufacturer expected efficiency, associated conveyor systems, air supply system, and installation details. For example, is the air classifier a horizontal or vertical type of air classifier? Is it straight-walled with continuous flow, or passive-pulsing? What is the size of the blower? What is the operation angle for the trommel? What is the speed of the trommel? What is the speed of the trommel? Will air be used to entrain light particles for removal from the trommel? Is the magnet inclined? What is the mechanism for removing materials from the magnet? etc...

**Response:** As discussed in our conversation with Susan Pelz:

- The air classifier is neither horizontal or vertical, rather it is inclined at an approximately 25 degree angle. The unit does not "transport" any material, but blows the lighter fraction



away from the heavier fraction. It is straight walled with continuous flow. It has a 5 horsepower blower.

- The operation angle for the trommel is 7 degrees.
- The speed of the trommel is approximately 112 feet per minute.
- Air will not be used to entrain light particles from the trommel.
- The magnet is not inclined, it is horizontal.
- Gravity will remove non-ferrous materials.

Comment #5:

The information submitted indicates that "glass containers will be hand sorted from the heavy fraction conveyor line on the sorting system and placed into self dumping hoppers...[and then into] glass storage bunkers." Which conveyor line on drawing 3 is the "heavy fraction conveyor line"? Please show the "heavy fraction conveyor line on Drawing 3 or other appropriate Drawing. After the glass is placed in the storage bunkers, how often is it removed for recycling or disposal? How is the glass removed from the bunkers?

Response:

The heavy fraction conveyor line is the bottom line shown in the layout plan on Drawing H94171-1. It is directly adjacent to the containers marked "Green", "AMB", and "FL".

Glass will normally be removed from the storage bunker when a 20-ton inventory is available. This equates to a marketable load of glass. A front-end loader will be used to remove glass from the storage bunker into shipment trailers.

Comment #6:

The information submitted indicates that "any incidental white goods, tires, etc. will be sorted into a front load dumpster container and disposed of as appropriate, on an as-needed basis." Please specify the maximum time these materials will be sorted at the site.

Response:

White goods, tires, or any other incidental contaminants will be removed for disposal on an as-needed basis; not longer than two days storage on-site.

Ms. Susan Pelz, E.I.  
September 12, 1994  
Page 4



I hope that we have adequately addressed your concerns. Please feel free to call me with any questions.

Sincerely,

A handwritten signature in cursive script, reading 'Thomas M. O'Connor', is positioned above the printed name.

Thomas M. O'Connor, P.E.  
Director of Environmental Engineering

:clf  
Encl.

cc: Robert Steinle, P.E., Pasco County Utilities, w/encl.  
Douglas S. Bramlett, Pasco County Utilities, w/o encl.  
Robert Sigmond, Pasco County Utilities, w/encl.  
Steven R. Shannon, Browning Ferris, w/encl.  
File 3210-014-000 (105) MRF  
(LETTERS\LL180C.TOC)



Department of  
Environmental Protection

RECEIVED  
SEP 13 1994

Lawton Chiles  
Governor

Southwest District  
3804 Coconut Palm Drive  
Tampa, Florida 33619

RECEIVED

AUG 29 1994

Department of Environmental Protection  
SOUTHWEST DISTRICT  
Virginia B. Wetherell  
Secretary

KEA

Pasco County Utilities Services  
Mr. Douglas Bramlett, Assistant County Administrator  
7536 State Street  
New Port Richey, FL 34654

August 26, 1994

RE: Materials Recovery Facility, Pasco County  
Pending Permit No. 8C51-252834

Dear Mr. Bramlett:

This is to acknowledge receipt of your permit application, to construct a solid waste management facility, referred to as the Pasco County Materials Recovery Facility.

This letter constitutes notice that a permit will be required for your project pursuant to Chapter(s) 403, Florida Statutes.

Your application for a permit is incomplete. Please provide the information listed below promptly. Evaluation of your proposed project will be delayed until all requested information has been received.

The following information is needed in support of the solid waste application [Chapter 17-701, Florida Administrative Code (F.A.C.)]:

1. The information submitted indicates that bags will be removed manually. Will the bags be disposed of or recycled? Is this quantity included in the residual stream of 5-10%?
2. The information submitted indicates that the "sorting system [including the trommel, air classifier, and magnet] and its conveyor are shown on the Drawings on Sheet 3." However, the trommel, air classifier and magnet are not shown on Drawing 3. The system shown on Drawing 3 indicates a hand-sort operation only, with a single conveyor and six storage bins for separated materials. Trommels, air classifiers and magnet systems typically have two output streams, each with a specific associated conveyor or discharge bin. Please revise Drawing 3 to show the trommel screen, air classifier, magnet and associated conveyor systems.

3. The information provided indicates that "an air classifier will not sort with 100% accuracy." The information submitted does not adequately address the Department's request. Typically, air classifiers separate shredded materials, not whole bottles. Please provide a detailed description of the process by which whole, mixed containers are separated by air classification. Please provide any references upon which this operation is based.

4. The Department is aware that several contractors/consultants may be utilized in this project. However, the Department requires complete construction drawings and specifications for permit review. The information provided is sufficient for the baler and baler feed conveyor. However, the information submitted on the "sorting system" is simply a vendor quotation. Please provide details (i.e. shop drawings, manufacturer specification sheets, etc.) for all equipment, i.e., magnet, air classifier, trommel, including size, capacity, manufacturer expected efficiency, associated conveyor systems, air supply system, and installation details. For example, is the air classifier a horizontal or vertical type of air classifier? Is it straight-walled with continuous flow, or passive-pulsing? What is the size of the blower? What is the operation angle for the trommel? What is the speed of the trommel? Will air be used to entrain light particles for removal from the trommel? Is the magnet inclined? What is the mechanism for removing materials from the magnet? etc...

5. The information submitted indicates that "glass containers will be hand sorted from the heavy fraction conveyor line on the sorting system and placed into self dumping hoppers...[and then into] glass storage bunkers." Which conveyor line on drawing 3 is the "heavy fraction conveyor line"? Please show the "heavy fraction conveyor line" on Drawing 3 or other appropriate Drawing. After the glass is placed in the storage bunkers, how often is it removed for recycling or disposal? How is the glass removed from the bunkers?

6. The information submitted indicates that "any incidental white goods, tires, etc. will be sorted into a front load dumpster container and disposed of as appropriate, on an as-needed basis." Please specify the maximum time these materials will be stored at the site.


The following comment is for information only, at this time, and does not require an immediate response:

1. The supplemental drawings submitted (Sheets 7 through 15, H1, H2, and S1) do not provide details on the fire suppression system. Please be advised that the light fixtures, Type "F", proposed for some areas of the facility, are not explosion proof and must be installed above any fire suppression sprinklers. Please be advised that a fire safety survey conducted by the local fire authorities shall be required by the Department upon completion of construction, and annually thereafter during the operation of the facility.

"NOTICE! Pursuant to the provisions of Section 120.600, F.S. and Chapter 17-12.070(5), F.A.C., if the Department does not receive a complete response to this request for information within 30 days of the date of this letter, the Department may issue a final order denying your application. You need to respond within 30 days after the date of this letter, responding to all of the information requests and indicating when a response to any unanswered questions will be submitted. If the response will require longer than 30 days to develop, you should develop a specific time table for the submission of the requested information for Department review and consideration. Failure to comply with a time table accepted by the Department will be grounds for the Department to issue a Final Order of Denial for lack of a timely response. A denial for lack of information or response will be unbiased as to the merits of the application. The applicant can reapply as soon as the requested information is available."

You are requested to submit your response to this letter together, as one complete package. If there are points which must be discussed and resolved, please contact me at (813) 744-6100 ext. 386.

Sincerely,

  
Susan J. Pelz, E. I  
Solid Waste Section  
Division of Waste Management

sjp


cc: Tom O'Connor, P.E., King Engineering Associates, 8406  
Massachusetts Ave., Suite A-2, New Port Richey,  
FL 34653  
Robert Butera, P.E., FDEP Tampa





**Waste Systems™**  
BROWNING-FERRIS INDUSTRIES

SOUTH ATLANTIC REGION

Recycled paper 

**RECEIVED**  
SEP 13 1994

Department of Environmental Protection  
SOUTHWEST DISTRICT  
BY \_\_\_\_\_

September 8, 1994

Mr. Doug Bramlett  
Assistant County Administrator  
7536 State Street  
New Port Richey, FL 34654

Dear Mr. Bramlett:

In regard to the August 26, 1994 letter from the Florida Department of Environmental Protection asking for clarification of data pursuant to the Pasco County Materials Recovery Facility, we submit this letter to satisfy their questions. We discussed this response with Susan J. Pelz of FDEP last week and are comfortable that this additional data will satisfy their inquiry. Our responses relate to the format of questions asked by FDEP.

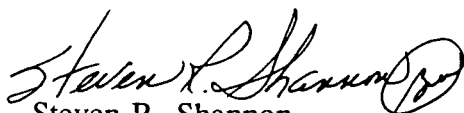
- 1) Plastic bags (blue bags) will be recycled if a market can be found. The market for various-resin, mixed film plastics has traditionally not been stable. The bags are included in the stated residual stream of 5-10%.
- 2) Drawing #3 did not show the trommel, air classifier and magnet. The attached drawing from our equipment vendor shows these features. The trash conveyors are located beneath the two sorting lines and travel in a reverse direction to discharge in the trash container located under the magnet.
- 3) The air classifier for this application is designed to blow light objects (i.e. aluminum, plastics and paper) to the aluminum and plastic sort conveyor and allows the heavier material (i.e. glass) to chop and continue to the glass sort conveyor. Paper will be pulled off the aluminum and plastic sort line and placed onto the reverse-direction trash conveyor. This configuration is working very well at our Recyclery™ in Broward County, Florida.
- 4) As discussed in our conversation with Susan Pelz, the air classifier:
  - A) is neither horizontal nor vertical, rather it is inclined at an approximately 25 degree angle. The unit does not "transport" any material, but blows the lighter fraction away from the heavier fraction.
  - B) is straight walled with continuous air flow

Letter to Mr. Doug Bramlett  
Page Two  
September 8, 1994

- C) has a 5 horse power blower
- The operation angle for the trommel is 7 degrees.
  - The speed of the trommel is approximately 112 feet per minute.
  - Air will not be used to entrain light particles from the trommel.
  - The magnet is not inclined, it is horizontal.
  - Gravity will remove non-ferrous materials.
- 5) The heavy fraction conveyor line is the bottom line shown in the lay-out plan on drawing H94171-1. It is directly adjacent to the containers marked "Green", "AMB", and "FL".
- Glass will normally be removed from the storage bunker when a 20-ton inventory is available. This equates to a marketable load of glass. A front-end loader will be used to remove glass from the storage bunker into shipment trailers.
- 6) White goods, tires or any other incidental contaminants will be removed for disposal on an as-needed basis; not longer than two days storage on-site.

We trust that these responses will be sufficient for permitting purposes. We are cognizant that the facility is scheduled to open in early October of 1994. If I may be of further assistance, please contact me.

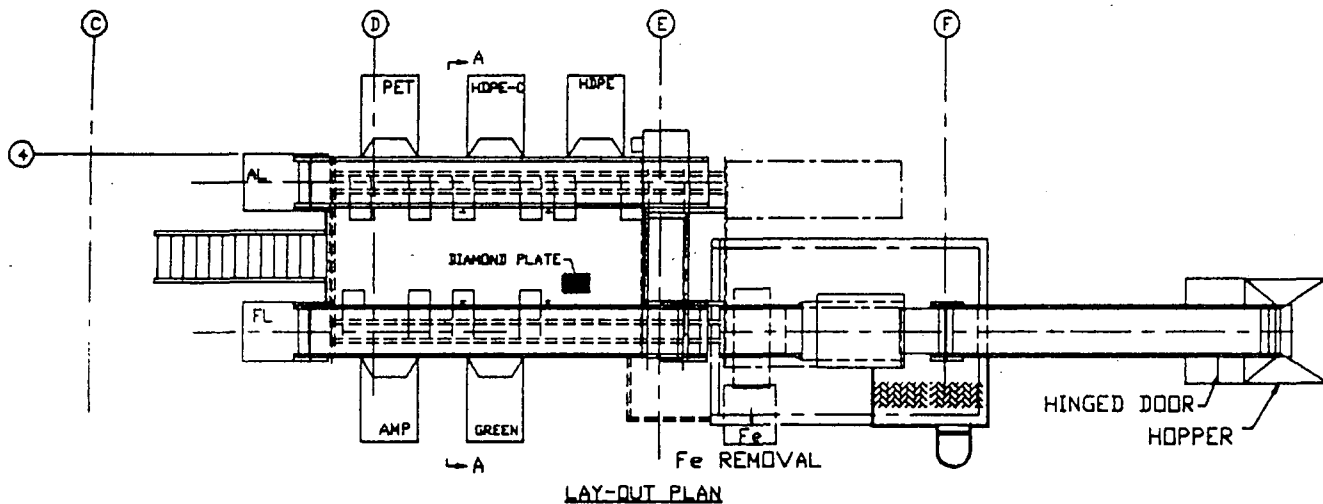
Respectfully,



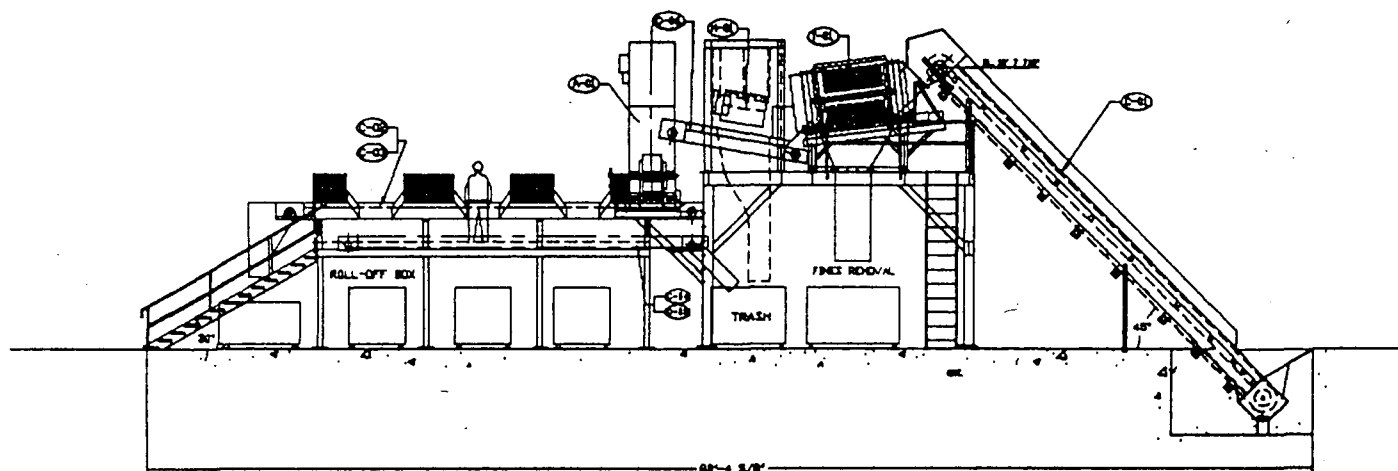
Steven R. Shannon  
Regional Manager - Processing  
South Atlantic Region

SRS/bw

Enclosures

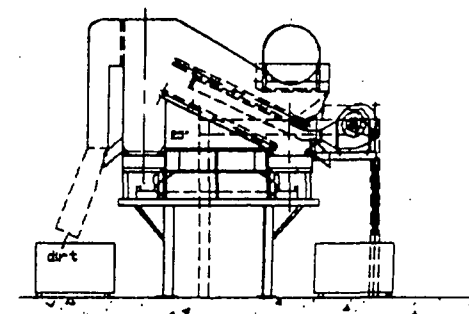


LAY-OUT PLAN



ELEVATION

MARK	DESCRIPTION	HP
(C-D)	28" WIDE x 32'-6" LG. FLEXVALL	3
(E-D)	CROSS BELT MAGNET	3
(F-D)	4' DIA. X 9'-0" TROMMEL SCREEN	3
(G-D)	AIR CLASSIFIER/ BLOWER	3/1/3
(H-D)	30" WIDE x 28'-0" LG. SORTING CONVEYOR	1
(I-D)	34" WIDE x 28'-0" LG. SORTING CONVEYOR	1
(J-D)	12" WIDE x 24'-0" LG. FLAT BELT CONVEYOR	3/4
(K-D)	12" WIDE x 24'-0" LG. FLAT BELT CONVEYOR	3/4
(L-D)	36" WIDE x 8'-9" LG. FLAT BELT CONVEYOR	3/4



SECTION A-A

REV. DATE		REVISIONS	
B.D. 23780 THRU 23748		DRG. NO. H94171-1	
		THIS DRAWING IS THE PROPERTY OF HUSTLER COMPANY. IT IS TO BE USED ONLY FOR THE PROJECT AND LOCATION SPECIFICALLY IDENTIFIED HEREON. IT IS NOT TO BE REPRODUCED OR COPIED IN ANY MANNER WITHOUT THE WRITTEN PERMISSION OF HUSTLER COMPANY.	
		CONINGLED SORTING SYSTEM	
HUSTLER COMPANY 1000 WEST 10TH AVENUE DENVER, CO. 80202 TEL. 333-2200		DESIGNED BY DRAWN BY CHECKED BY DATE	
		B. F. I. (PASCO COUNTY) CRIGLER ENTERPRISES	



**King Engineering Associates, Inc.**

8406 Massachusetts Avenue, Suite A-2 • New Port Richey, Florida 34653 • (813) 846-0904 • Fax: (813) 846-7017

TAL

**Engineers**

**Planners**

**Scientists**

**Surveyors**

July 26, 1994

Ms. Susan Pelz, E.I.  
Florida Department of Environmental Protection  
3804 Coconut Palm Drive  
Tampa, FL 33619

**RECEIVED**  
JUL 27 1994

Department of Environmental Protection  
SOUTHWEST DISTRICT  
BY \_\_\_\_\_

Re: Pasco County  
Material Recovery Facility  
Pending Permit No. SC51-252834

Dear Ms. Pelz:

King Engineering Associates, Inc. (KEA) and Pasco County are in receipt of your letter (attached) regarding the referenced permit application. We offer the following responses:

**Comment #1:** FAC 17-701.700(2) (a) requires a description of the solid waste that is proposed to be collected, stored, processed or disposed of by the facility. The information submitted (page 2) did not estimate the monthly tonnage of residual material which will required disposal. Please provide an estimate of the residual material.

**Response:** According to Browning-Ferris Industries (BFI), the proposed operator of the facility, their experience operating 95 recycleries indicates that residue will normally be 5% by weight of the processing rate and should not exceed 10%. At normal and maximum processing rates of 15 and 30 tons per day, this would result in a residue rate between 45 and 90 tons per month. All residue will be disposed of at the Pasco County Resource Recovery Facility or the Class III landfill as appropriate.

**Comment #2:** The following items require clarification for the information submitted the Operating Procedures, Attachment B, in support of FAC 17-701.700 (2) (b):

a: The information submitted does not address the removal of the bags. Please describe the de-bagging operation.

**Response:** Commingled rigid containers received in bags will be debugged manually on the tipping floor. BFI's experience



with mechanical debuggng has been costly and problematic. Also, manual debuggng will result in less residue than a mechanical debugger.

- b: The information submitted indicates that a trommel screen will be used to remove the mixed broken glass and other small residue, and an air classifier will be used to separate light materials from heavy materials. Neither a trommel screen nor an air classifier were included in the equipment list (page 3), and neither were shown on the Floor Plan (Drawing 3). Please revise Drawing 3 to show the trommel screen, air classifier and associated conveyor systems.

Response:

Please note that the magnet, trommel screen and air classifier described in Attachment B, Normal Operating Procedures, are all contained within the integrated sorting system listed on page 3. This sorting system and its conveyor are shown on the Drawings on Sheet 3. Information on the sorting system has been provided in response to Comment 2d.

- c: Please explain how an air classifier will accurately separate whole containers when, for example, a small glass jar may with the same as a large plastic bottle.

Response:

An air classifier will not sort with 100% accuracy between material types. However, it will dramatically improve sorting efficiency. Sorters will hand remove any recyclables that are directed to their respective work station by the sorting system heavy fraction conveyor. This includes recyclables which are not properly sorted by the air classifier. Such sorting is an integral component of BFI's proprietary RecycleNOW Quality Control Program.

- d: Please provide details for all equipment, i.e., magnet, air classifier, trommel, including size, capacity, associate conveyor systems, air supply system, and installation details.

Response:

Information on the sorting system, the baler feed conveyor and the baler is attached.

- e: The information submitted indicates that "residue will be...transferred to the landfill." However, other information



indicates that the residual will be "either converted to energy or landfilled at the Resource Recovery Facility." (page 4) Since two landfills exist at the site, please specify for which landfill (Class I ash monocell or Class III) the residual disposal is intended.

Response:

It is the County's intent to convert as much residue to energy as possible. Therefore, residue will be transferred to the Resource Recovery Facility where it will be converted to energy. The ash from this process will then be landfilled in the Class I ash cell. Segregated residue which is obviously not convertible to energy (i.e., glass, metal) will be landfilled in the Class III cell. Residue should roughly consist of the following components:

- Mixed broken glass 65%
- Bits of scrap plastic 10%
- Bits of scrap paper 10%
- Floor sweepings 5%
- Non-recyclable items 10%  
(PVC, Pyrex glass, fiberplastics, etc)

- f: The information submitted indicates that the materials will be "pushed onto the baler feed conveyor by the wheel loader and...baled." Please provide specific operating procedures for glass handling, since glass is generally not baled.

Response:

Glass containers will be hand sorted from the heavy fraction conveyor line on the sorting system and placed into self-dumping hoppers. These hoppers will be dumped into outside glass storage bunkers. The bunkers floors slope inward so that any drainage flows through weep holes in the back retaining wall and into the sanitary sewer drainage sump. BFI also intends on providing a prefabricated metal roof over the glass storage bunkers. This will minimize the amount of drainage generated from the glass storage bunkers.

- g: The information submitted indicates that bales will be 30" x 30" x 60". What is the expected weight of a bale for each material?



Response: The expected bale weights are approximately as follows:

- Paper 1,200 lbs.
- Corrugated Cardboard 1,200 lbs.
- Plastic 1,000 lbs.

Glass will not be baled but will be transferred to outside storage bunkers as described in the response to comment 2f.

**h: Please specify the personnel required for operations.**

Response: Facility personnel will include:

- Plant Supervisor - 1
- Receptionist/Secretary - 1
- Baler Operator - 1
- Floor Foreman - 1
- Moving Equipment Operators - 2
- Sorters - 6 to 10

**Comment #3: The information submitted in support of FAC 17-701.700(2) (b)2. indicates that the facility will be operating one eight hour shift per day. Please specify the operating hours and days of the facility.**

Response: Facility operating hours will be 7:30 am to 5:00 pm, Monday through Friday excluding County holidays. The County may also open the facility on Saturdays or add a second or third shift if required.

**Comment #4: Please provide clarification for the information submitted in support of FAC 17-701.700(2) (c). The information describes the traffic flow of the facility. However, the traffic flow and storage areas are not clearly shown on the Floor Plan (Drawing 3). Please provide a floor plan showing the traffic flow and storage areas. Do the trucks back in the overhead doors on the north side of the building, do they turn around inside the building, or do they enter through one door and exit through another?**

Response: The floor areas adjacent to the baler and sorter feed conveyors are considered the tipping areas. Deliveries of recyclables will vary throughout the day, therefore the tipping floor will be adjusted to accommodate different loads. If required, front end loaders will redistribute the recyclables on the tipping floor in order to make



room for incoming loads. No one area of the tipping floor will be designated as a storage area, however the southern portion of the facility floor has been designated as a bale storage area. Generally, paper will always be tipped near the baler feed conveyor. Delivery vehicles will back in through the overhead doors and exit from the same door through which they entered. A general process schematic is attached.

**Comment #5:**

The information submitted in support of FAC 17-701.700(2) (e) indicated that leachate sump will empty into the on-site sewer system. Please explain if the drainage (as shown on Drawing 3) from the interior of the building will also discharge to the adjacent wastewater treatment facility. The elevations for the drains are shown on Drawing 3, but the floor elevations around the building perimeter are not shown. Please indicate floor slopes required for adequate drainage.

**Response:**

The floor drains proposed for the building interior will discharge into the facility sanitary sewer system which then flows to the adjacent wastewater treatment plant. As shown on Sheet 3, the highest floor drain is at elevation 49.9 with the remainder of the drains being at elevation 49.8 or lower. As shown on Sheet 5, the top of the floor slab at the perimeter of the building is at a minimum elevation of 50.0. The flow arrows on Sheet 3 indicate the directions in which the floor slopes from the top elevation of 50.0 to the respective floor drain elevations. Also, as shown on Sheet S1, a 6" high by 12" wide concrete curb will be constructed around the perimeter of the building. As previously discussed, these features provide adequate control of any potential leachate. Please note that based on their other operations, BFI does not anticipate a significant amount of leachate to be generated.

**Comment #6:**

The information submitted in support of 17-701.700 (3) (b) indicates that "unacceptable materials such as white goods, tires, batteries, etc. will be segregated to an isolated area of the tipping floor. [And] these items will than be hauled off-site for proper disposal/reuse." (Attachment E, Screening Plan) How often will material be removed for "disposal/reuse"? Please estimate the quantities of each of these materials. From the information submitted, it appears that this facility is not open to the public. Please explain if white goods, tire, batteries, etc. are proposed for the facility.





Response: The County does not propose receiving white goods, tires, batteries, etc. at the facility and has not included such items in its contract with BFI. Such items will rarely show up in a curbside "blue bag" recycling program as instituted by the County. Any incidental white goods, tires, etc. will be sorted into a front load dumpster container and disposed of, as appropriate, on an as-needed basis. Batteries will be placed in an appropriate shipping barrel any removed by the County for recycling or proper disposal.

Comment #7: Please explain what "FL" and "MB" denote in the exterior glass storage area on Drawing 3.

Response: The designation FL stands for "flint" which is the termed used for clear glass. The designation MB stands for "mixed broken".

Comment #8: Drawing S1 indicates that "for locations/layout and additional details of...drains, floor slopes, sumps, equipment, etc. see "M" drawings." The Department requires complete construction drawings for permit review. Please submit "M" drawings and any other drawings required for construction of the facility.

Response: The reference to "M" drawings on Sheet S1 refers to Sheets 1 through 6. All of these sheets were incorporated in the original submittal package. In addition, we are currently obtaining signed and sealed copies of the electrical, HVAC and structural sheets and will be delivering them to you before the end of the week.

Comment #9: Drawing 3 indicates that the metal roof over the exterior glass storage area will be installed by others. Please provide details for the metal roof.

Response: Please note that the metal roof over the glass storage bunkers is not required but has been proposed in order to minimize the amount of stormwater entering the floor drain system. The proposed metal roof will consist of a prefabricated roof and column system from a prefabricated metal building manufacturer. The roof will be added to the side of the building by BFI. A sketch showing the proposed metal roof installation has been attached.

Ms. Susan Pelz, E.I.  
July 26, 1994  
Page 7



I hope that we have adequately addressed your concerns. Please feel free to call me with any questions.

Sincerely,

*Thomas M. O'Connor*

Thomas M. O'Connor, P.E.  
Project Manager

:lm

cc: Robert Steinle, P.E., Pasco County Utilities, w/encl.  
Douglas S. Bramlett, Pasco County Utilities, w/o encl.  
Robert Sigmond, Pasco County Utilities, w/encl.  
Steven R. Shannon, Browning Ferris, w/encl.  
File 3210-014-000 (105) MRF  
LETTERS\L209J.TOC

**RECEIVED**  
JUL 27 1994  
Department of Environmental Protection  
By: SOUTHWEST DISTRICT



# Department of Environmental Protection

Lawton Chiles  
Governor

JUL 22 1994

Southwest District  
3804 Coconut Palm Drive  
Tampa, Florida 33619

Virginia B. Wetherell  
Secretary

KEA

Pasco County Utilities Services  
Mr. Douglas Bramlett, Assistant County Administrator  
7536 State Street  
New Port Richey, FL 34654

July 19, 1994

RE: Materials Recovery Facility, Pasco County  
Pending Permit No. SC51-252834

Dear Mr. Bramlett:

This is to acknowledge receipt of your permit application, to construct a solid waste management facility, referred to as the Pasco County Materials Recovery Facility.

This letter constitutes notice that a permit will be required for your project pursuant to Chapter(s) 403, Florida Statutes.

Your application for a permit is incomplete. Please provide the information listed below promptly. Evaluation of your proposed project will be delayed until all requested information has been received.

The following information is needed in support of the solid waste application [Chapter 17-701, Florida Administrative Code (F.A.C.)]:

1. FAC 17-701.700(2)(a) requires a description of the solid waste that is proposed to be collected, stored, processed or disposed of by the facility. The information submitted (page 2) did not estimate the monthly tonnage of residual material which will require disposal. Please provide an estimate of the residual material.
2. The following items require clarification for the information submitted the Operating Procedures, Attachment B, in support of FAC 17-701.700(2)(b):
  - a. The information submitted does not address the removal of the bags. Please describe the de-bagging operation..

- b. The information submitted indicates that a trommel screen will be used to removed the mixed broken glass and other small residue, and an air classifier will be used to separate light materials from heavy materials. Neither a trommel screen nor an air classifier were included in the equipment list (page 3), and neither were shown on the Floor Plan (Drawing 3). Please revise Drawing 3 to show the trommel screen, air classifier and associated conveyor systems.
  - c. Please explain how an air classifier will accurately separate whole containers when, for example, a small glass jar may weigh the same as a large plastic bottle.
  - d. Please provide details for all equipment, i.e., magnet, air classifier, trommel, including size, capacity, associated conveyor systems, air supply system, and installation details.
  - e. The information submitted indicates that "residue will be... transferred to the landfill." However, other information indicates that the residual will be "either converted to energy or landfilled at the Resource Recovery Facility." (page 4) Since two landfills exist at the site, please specify for which landfill (Class I ash monocell or Class III) the residual disposal is intended.
  - f. The information submitted indicates that the materials will be "pushed onto the baler feed conveyor by the wheel loader and... baled." Please provide specific operating procedures for glass handling, since glass is generally not baled.
  - g. The information submitted indicates that bales will be 30" x 30" x 60". What is the expected weight of a bale for each material?
  - h. Please specify the personnel required for operations.
3. The information submitted in support of FAC 17-701.700(2)(b)2. indicates that the facility will be operating one eight hour shift per day. Please specify the operating hours and days of the facility.

4. Please provide clarification for the information submitted in support of FAC 17-701.700(2)(c). The information submitted describes the traffic flow of the facility. However, the traffic flow and storage areas are not clearly shown on the Floor Plan (Drawing 3). Please provide a floor plan showing the traffic flow and storage areas. Do the trucks back in the overhead doors on the north side of the building, do they turn around inside the building, or do they enter through one door and exit through another?

5. The information submitted in support of FAC 17-701.700(2)(e) indicates that leachate sump will empty into the on-site sewer system. Please explain if the drainage (as shown on Drawing 3) from the interior of the building will also discharge to the adjacent wastewater treatment facility. The elevations for the drains are shown on Drawing 3, but the floor elevations around the building perimeter are not shown. Please indicate floor slopes required for adequate drainage.

6. The information submitted in support of 17-701.700(3)(b) indicates that "unacceptable materials such as white goods, tires, batteries, etc. will be segregated to an isolated area of the tipping floor. [And] these items will than be hauled off-site for proper disposal/reuse." (Attachment E, Screening Plan) How often will material be removed for "disposal/reuse"? Please estimate the quantities of each of these materials. From the information submitted, it appears that this facility is not open to the public. Please explain if white goods, tires, batteries, etc. are proposed for the facility.

7. Please explain what "FL" and "MB" denote in the exterior glass storage area on Drawing 3.

8. Drawing S1 indicates that "for locations/layout and additional details of... drains, floor slopes, sumps, equipment, etc., see "M" drawings." The Department requires complete construction drawings for permit review. Please submit "M" drawings and any other drawings required for construction of the facility.

9. Drawing 3 indicates that the metal roof over the exterior glass storage area will be installed by others. Please provide details for the metal roof.

The following items are for information only, and do not require an immediate response:

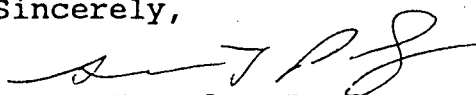
1. The financial assurance cost estimates submitted in Attachment G are acceptable. Please be advised that these estimates shall be updated annually, and submitted to the Department for review. A copy of these estimates will be forwarded to Mr. Fred Wick, Solid Waste Section, FDEP, 2600 Blair Stone Road, Tallahassee, Florida 32399-2407. The funding of the financial assurance mechanism shall be reviewed annually by the Department to assess the facility's compliance with FAC 17-701.700(4).

2. The copy of SWFWMD permit number 409662.00 is acceptable for the construction of the facility. However, this permit expires on December 23, 1994. A copy of an operation permit or extension of the expiration date of the stormwater management system construction permit from SWFWMD shall be submitted to the Department no later than December 23, 1994.

"NOTICE! Pursuant to the provisions of Section 120.600, F.S. and Chapter 17-12.070(5), F.A.C., if the Department does not receive a complete response to this request for information within 30 days of the date of this letter, the Department may issue a final order denying your application. You need to respond within 30 days after the date of this letter, responding to all of the information requests and indicating when a response to any unanswered questions will be submitted. If the response will require longer than 30 days to develop, you should develop a specific time table for the submission of the requested information for Department review and consideration. Failure to comply with a time table accepted by the Department will be grounds for the Department to issue a Final Order of Denial for lack of a timely response. A denial for lack of information or response will be unbiased as to the merits of the application. The applicant can reapply as soon as the requested information is available."

You are requested to submit your response to this letter together, as one complete package. If there are points which must be discussed and resolved, please contact me at (813) 744-6100 ext. 386.

Sincerely,

  
Susan J. Pelz, E. I.  
Solid Waste Section  
Division of Waste Management

sjp

cc: Tom O'Connor, P.E., King Engineering Associates, 8406  
Massachusetts Ave., Suite A-2, New Port Richey,  
FL 34653

Robert Butera, P.E., FDEP Tampa  
Fred Wick, FDEP Tallahassee, w/attachment



June 7, 1994 4985 FYLER AVENUE, SAINT LOUIS, MISSOURI 63139 . 314/352-6000  
FAX 314/352-0355

Mr. Wayne Crigler  
Crigler Enterprises  
748 Tenth St. N.W.  
Atlanta, Georgia 30318

PROPOSAL NO. 94300

Ref: BFI Job #711.012  
Pasco County - MRF

Dear Wayne:

As per our conversation, enclosed please find the following pricing and specifications on the comingled sort system. Please note, we are quoting you Net prices, in hopes that our prices will be attractive to BFI to give us the opportunity to install our first system such as this.

- Item #1: 30" wide x 30' long Flexwall Infeed to Trommel:  
2 HP Variable Speed Motor, hopper for pit installation
- Item #2: Overhead Electro Cross Belt Magnet complete with power supply and supports. To be located above the discharge of the infeed conveyor
- Item #3: 4' diameter x 10' long Trommel Screen with 2" diameter holes, complete with support structure, discharge chute for thrus, discharge chute for overs, infeed chute
- Item #4: Air Classifier/Blower designed to separate PET and Aluminum from the glass
- Item #5 (2) 30" wide x 35' long Flat Belt Sorting Conveyor complete with mezzanines, stairs as required with rail and (5) Drop Chutes,

Also include with this will be controls, complete control panel for the above system.

The total price on this system F.O.B. Pasco, Florida would be as per above information would be

Please reference Drawing #S-132


The add on price for adding (2) Trash Discharge Conveyors to be located directly underneath sort conveyors. These would be 12" wide x 30' long would be an add on price of

Price for supervision and start-up by a Hustler Conveyor Company representative for this system would be \$200.00 per day.

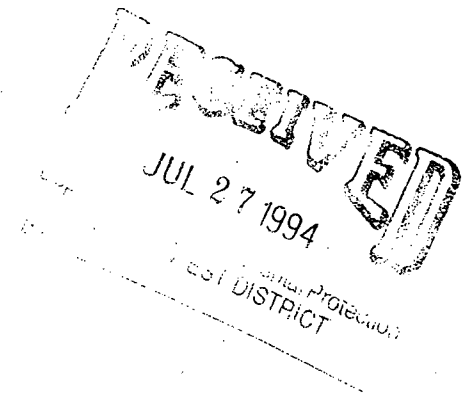


Delivery on the above equipment to be approximately 10 weeks.

Very truly yours,  
HUSTLER CONVEYOR COMPANY

  
David R. Guyton,  
Sales Manager

DG/mt.







4985 FYLER AVENUE, SAINT LOUIS, MISSOURI 63139 . 314/352-6000  
FAX 314/352-0355

May 24, 1994

PROPOSAL NO. 94264

Mr. Wayne Crigler  
Crigler Enterprises  
748 Tenth St. N.W.  
Atlanta, Georgia 30318

Ref: BFI Job #711.012  
Pacso County MRF

Dear Wayne:

As per your request enclosed please find pricing and specifications on a 60" wide x 81'6" long Roller Chain Belt Conveyor to handle aluminum, news, plastics and tin cans feeding a Selco 2R1075 Baler over the side.

**DIMENSIONS:**

Belt Width: 60"  
Conveyor Length: 81'6" measured along belt path  
Belt Path Style: "S" shaped with a lower horizontal of 55' (top of belt to be 12" below grade) an incline section of 23'6" at 30 degrees and a 3' upper section declined at 10 degrees

**BELTING:** PVC350

Chain: 2" wide x 1/4" thick (2) strands

Side Bars: precision die punches HR1044 high carbon steel

Side Wings: 4" high x 1/4" thick interlocking offset style

Rollers: Single Flange: 3" diameter x 1-1/2" face  
Sintered Steel

Cleats: Angle Type, 3" high on 4' centers

Belt Sprockets: 6 tooth, 6" pitch, 12" pitch diameter, flame cut with hardened teeth at tail and head ends of conveyor.

**SHAFTING:** Both head and tail shafts fabricated out of C1045 steel. Shafts are mounted in heavy duty ball bearing pillow blocks with cast iron housings.

**DRIVE:** 10 HP 1800 RPM electric motor 230/460 volts - 3

Manufacturers of Heavy Duty Conveyors and Material Handling systems for steel mills, scrap processors and Foundries.



RECEIVED  
JUL 27 1994  
Department of Environmental Protection  
SOUTHWEST DISTRICT

phase - 60 hertz, TEFC continuous duty motor with a 1.15 s.f. and roller chain from reducer to sprocket of head shaft. This conveyor comes with an adjustable steel base for drive assembly.

APPROXIMATE CONVEYOR SPEED: 40' per minute

SPECIAL FEATURES:

Back stop and Electric Oilers, motor wired to disconnect switch, (2) push button "E" stops, extra support for 6' deep pit.

FRAME:

Heavy duty open frame construction from structural shapes and formed plate. Frame is braced and reinforced for rigidity in all planes and is completely shop fitted and welded.

Side Guards:

expanded metal provided in areas of personal access.

Side Skirts:

12" high on lower horizontal and 36" high on incline and upper sections.

Load Bars:

to limit deflection of belt under impact

PAINT:

finish coat Hustler Blue.

The total price for this conveyor supplied in Modular Form including motor, drive and all necessary guards would be Crigler Enterprises.

Option: 3/8" thick perimeter pit plates, reinforced per specifications. The additional price on these would be \$11,220.00 - Less 10% to Crigler Enterprises.

All prices are F.O.B. - Our Plant - St. Louis, Missouri.

The approximate freight rate to Pasco, Florida would be \$3400.00 Net.

Note, the above prices do not include any State, Local or Use Taxes if applicable.

Terms are 20% with an order, 70% prior to shipment, Balance Net 30 days; otherwise not later than 3 weeks after notification goods are ready for delivery.

Delivery is currently running 8 to 10 weeks after receipt of an order, down payment and approved drawing.

Please note, all electricals to be supplied by others.

All parts manufactured by Hustler Conveyor Company carry a ONE YEAR WARRANTY from date of shipment with all purchased parts and their warranties passed on to end user.

If after reviewing the enclosed you have any further questions, comments or if we may be of any additional assistance, please do not hesitate in



calling.

Very truly yours,  
HUSTLER CONVEYOR COMPANY

A handwritten signature in dark ink, appearing to read "D. R. Guyton", is written over the typed name.

David R. Guyton,  
Sales Manager

DG/mt



**Harris Waste  
Management  
Group, Inc.**

# HARRIS MODEL HRB-811N AUTOMATIC TWO-RAM BALING PRESS

REVISED 6/22/94

## PERFORMANCE

BALE SIZE	45 IN. WIDE X 30 IN. HIGH X 82 IN. LONG (VARIABLE)
BALE VOLUME	48.4 CUBIC FEET EXPANDED (APPROXIMATE)
CYCLE TIME	75 HP 230 SECONDS ( 15 CYCLES PER HOUR ) O.C.C. 275 SECONDS ( 13 CYCLES PER HOUR ) U.B.C.
CHARGING CHAMBER VOLUME	81 CUBIC FEET

MATERIAL	BALE WEIGHT	DENSITY LBS / CU.FT. LOOSE/BALED	STANDARD 75 HP TONS / HR
BULK OCC	UP TO 1350 LBS.	3 / 28	UP TO 12
NEWS	UP TO 1500 LBS.	8 / 31	UP TO 19
PET	UP TO 1200 LBS.	1 / 25	UP TO 8
WHOLE ALUM. CANS	UP TO 1100 LBS.	2 / 21	UP TO 7
STEEL CANS	UP TO 2000 LBS.	5 / 42	UP TO 19
SOLID WASTE	UP TO 2200 LBS.	10 / 45	UP TO 24

\*PERFORMANCE RATES, BALE WEIGHTS, AND BALE DENSITIES ARE SUBJECT TO MOISTURE CONTENT, MATERIAL PRE-BALE DENSITIES, FEED RATES, AND OTHER VARIABLES IN BALING

## HYDRAULICS

### MAIN PUMPS

1 - 135 GPM AT 800 PSI (STANDARD 75 HP)  
1 - 45 GPM AT 2800 PSI (STANDARD 75 HP)

### SYSTEM PRESSURE

SYSTEM IS RATED AT 3000 PSI MAXIMUM, AND  
OPERATED AT 93% OF THE MAXIMUM RATING

### MAIN CYLINDER

10 IN. BORE, 110 TONS TOTAL FORCE

### RAM FACE PRESSURE

183 PSI

### EJECTOR CYLINDER

8 IN. BORE, 70 TONS TOTAL FORCE

### OIL RESERVOIR

542 GALLON CAPACITY

### OIL COOLER

AIR-TO OIL EXCHANGER IS STANDARD

### FILTRATION

10 MICRON REPLACEMENT ELEMENT FILTER

## ELECTRICAL

### MAIN MOTOR

STANDARD

75 HP, 460 VOLT, 3 PHASE

### STRAPPER MOTOR

10 HP, C - FACE, 1750 RPM, 460 VOLT, 3 PHASE

### COOLER MOTOR

5 HP, C - FACE, 1750 RPM, 460 VOLT, 3 PHASE

### MOTOR TYPE

TEFC, HIGH EFFICIENCY

ACROSS THE LINE STARTING IS STANDARD

### CONTROLS

UL AND CUL LISTED, NEMA 12 RATED

AB-SLC 500 (PROG. CONTROLLER)

HRB-811N

RECEIVED  
JUL 27 1994

Department of Environmental Protection  
SOUTHWEST DISTRICT



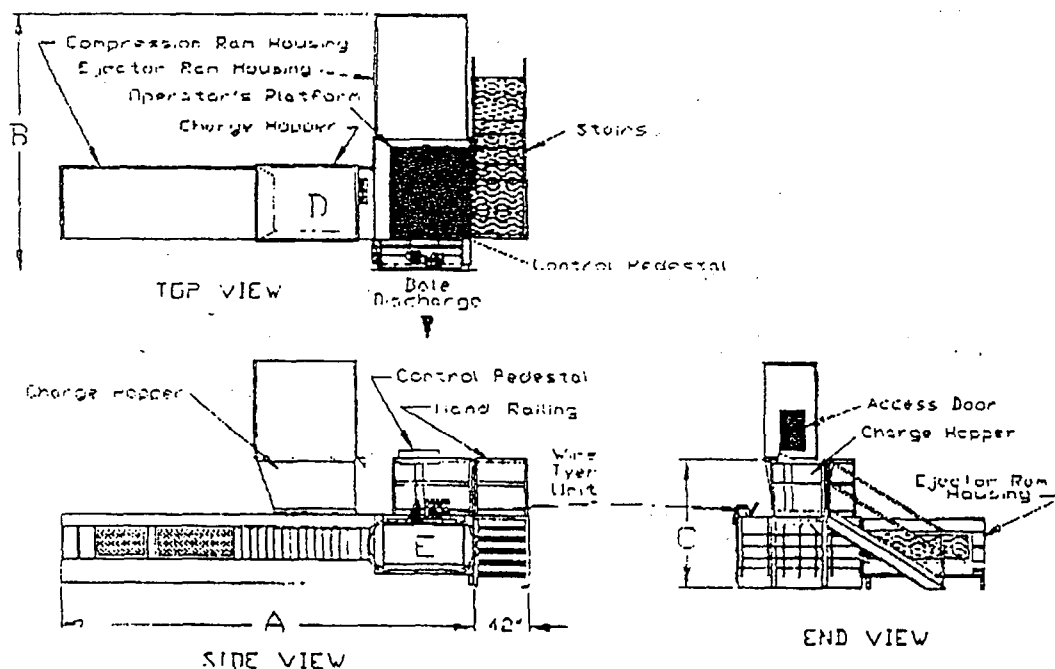
Harris Waste  
Management  
Group, Inc.

### GENERAL SPECIFICATIONS

CHARGE BOX OPENING	40 IN. X 120 IN.
HOPPER OPENING	52 IN. X 132 IN. (STD.) - 86 IN. X 136 IN. (MAX.)
STRAPPER	U.S. WIRE TIE MODEL 341 (STANDARD) (OTHER MAJOR BRANDS AVAILABLE)
SHIPPING WEIGHT	24 TONS (APPROXIMATE)

### DIMENSIONS

A - LENGTH OVERALL	32 FT. - 6 IN.
B - WIDTH FRAME	12 FT. - 8 IN.
C - HOPPER HEIGHT	7 FT. - 10 IN.
D - HOPPER OPENING	52 IN. X 132 IN. (STD.)
E - EJECTOR OPENING	29 IN. X 58 IN.

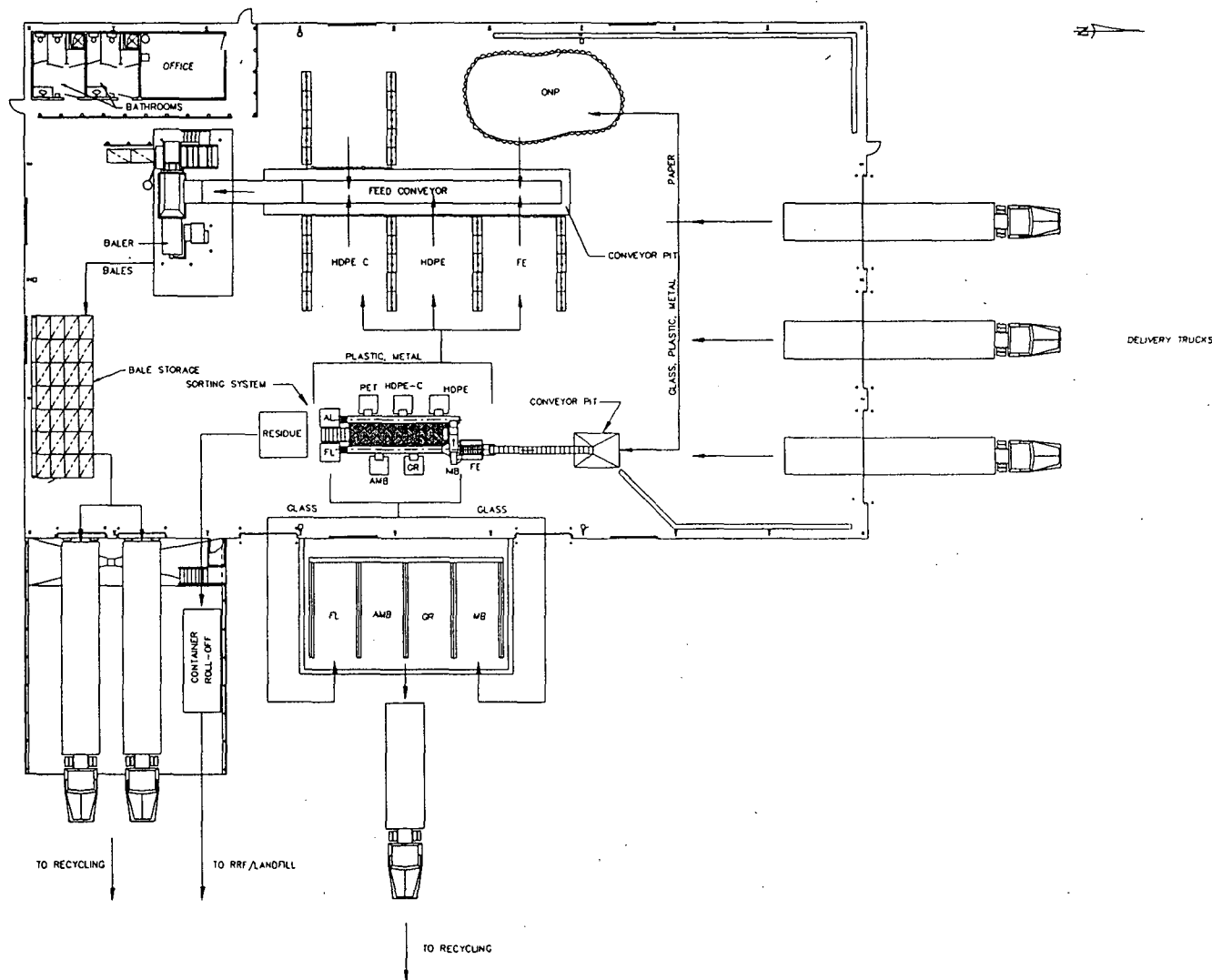


### OPTIONS

REDUCED VOLTAGE STARTING	HOPPER EXTENSION
REMOTE POWER UNIT	DIVERTER
BALE RELEASE	UPPER PHOTO EYES
BALE DOOR	NAVIGATOR CONTROL SYSTEM
OPERATORS CABIN	NAVIGATOR PLUS CONTROL SYSTEM
OPERATORS CABIN WITH HEATING AND AIR CONDITIONING	BALE RUN OUT TABLE
NON-FERROUS LINERS : BALER AND RAM	

SPECIFICATIONS ARE SUBJECT TO CHANGE WITHOUT NOTICE.

Drawing Name: C:\ACAD\11\MSR\PERMITS\DWG\_38/26/94 4:46pm Plot Scale: 1=128' VAI



DATE	3/2/94
BY	VAT
CHKD	
APPD	

**KEA KING ENGINEERING ASSOCIATES, INC.**  
 Engineers - Planners - Surveyors - Scientists

☐ 2000 S.W. 1st St.  
 Fort Lauderdale, FL 33304  
 (954) 571-1111

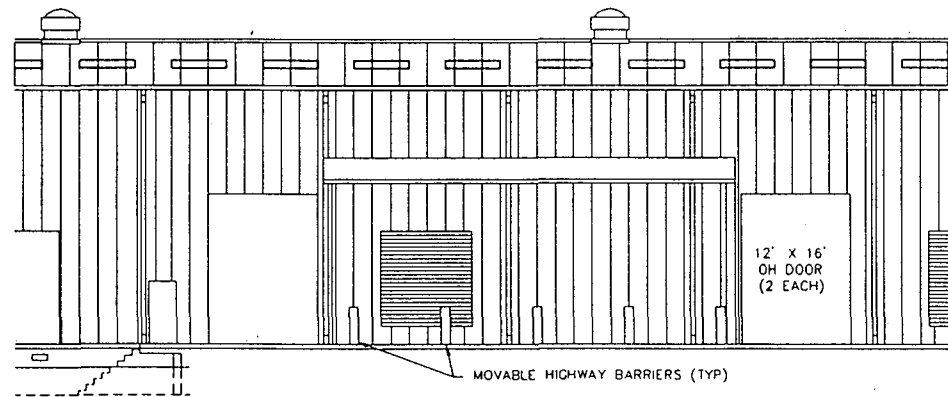
☐ 1000 S.W. 1st St.  
 Fort Lauderdale, FL 33304  
 (954) 571-1111

☒ 1000 S.W. 1st St.  
 Fort Lauderdale, FL 33304  
 (954) 571-1111

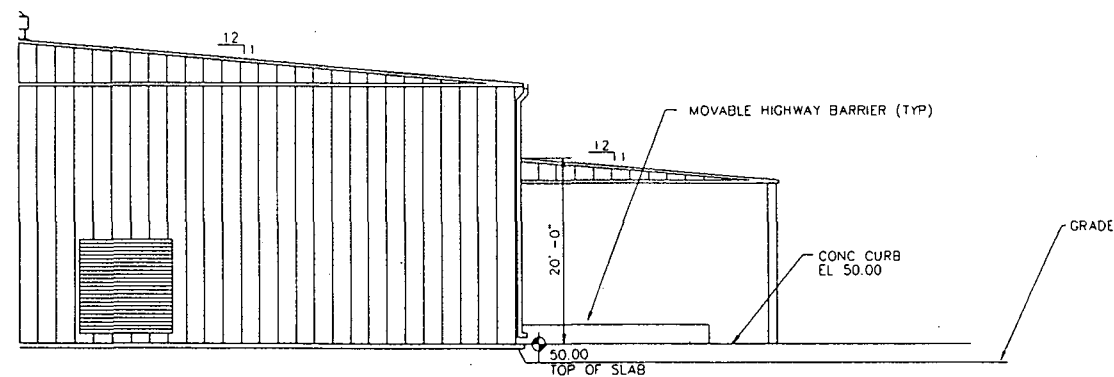
MATERIALS RECOVERY FACILITY

PROCESS FLOW SCHEMATIC

NO.	3210-014
REV.	01
DATE	MAY 1994
BY	NTS



EAST ELEVATION



SOUTH ELEVATION

Drawing Name: C:\ACAD11\MEP\SCHEBLDG.DWG JUL/26/94 4:40pm Plot Scale: 1/8"=1'-0"

DATE	10/1/94
BY	VAI
CHECKED	



**KING ENGINEERING ASSOCIATES, INC.**  
Engineers • Planners • Surveyors • Scientists

☐ 1000 S.W. 10th Ave., Suite 100, Fort Lauderdale, FL 33304 (305) 791-1400  
☐ 3000 S.W. 10th Ave., Suite 100, Fort Lauderdale, FL 33304 (305) 791-1400  
☒ 1000 S.W. 10th Ave., Suite 100, Fort Lauderdale, FL 33304 (305) 791-1400

MATERIALS RECOVERY FACILITY

METAL ROOF

NO.	3710-014
DATE	MAY 1994
BY	NTS

STATE OF FLORIDA  
DEPARTMENT OF ENVIRONMENTAL PROTECTION

APPLICATION FOR PERMIT TO CONSTRUCT, OPERATE, MODIFY OR CLOSE  
A SOLID WASTE MANAGEMENT FACILITY

Please Type or Print

A. GENERAL INFORMATION

1. Type of facility:

Disposal ☐

Class I Landfill	<input type="checkbox"/>	Ash Monofill	<input type="checkbox"/>
Class II Landfill	<input type="checkbox"/>	Asbestos Monofill	<input type="checkbox"/>
Class III Landfill	<input type="checkbox"/>	Industrial Solid Waste	<input type="checkbox"/>
Other	<input type="checkbox"/>		

Volume Reduction ☒

Incinerator	<input type="checkbox"/>	Pulverizer / Shredder	<input type="checkbox"/>
Composting	<input type="checkbox"/>	Compactor/Baling Plant	<input type="checkbox"/>
Materials Recovery	<input checked="" type="checkbox"/>	Energy Recovery	<input type="checkbox"/>
Other	<input type="checkbox"/>		

2. Type of application:

Construction	<input type="checkbox"/>	Construction/Operation	<input checked="" type="checkbox"/>
Operation	<input type="checkbox"/>	Closure	<input type="checkbox"/>

3. Classification of application:

New	<input checked="" type="checkbox"/>	Substantial Modification	<input type="checkbox"/>
Renewal	<input type="checkbox"/>	Minor Modification	<input type="checkbox"/>

4. Facility name: Pasco County Materials Recovery Facility

5. DER ID number: \_\_\_\_\_ County: Pasco

6. Facility location (main entrance): 14220 Hays Road  
Spring Hills, FL 34610

7. Location coordinates:

Section: 25 Township: 24S Range: 17E

UTMs: Zone \_\_\_\_\_ km E \_\_\_\_\_ km N

Latitude: 28 ° 21 ' 45 " Longitude: 82 ° 33 ' 45 "

8. Applicant name (operating authority): Pasco County

Mailing address: 7536 State Street, New Port Richey, FL 34654  
Street or P.O. Box City State Zip

Contact person: Douglas Bramlett Telephone: (813) 847-8145  
Assistant County Administrator

Title: Utilities Service Branch

RECEIVED  
JUN 21 1994

Department of Environmental Protection  
BY 45 SOUTHWEST DISTRICT



9. Authorized agent/Consultant: King Engineering Associates, Inc.  
Mailing address: 8406 Massachusetts Avenue, Suite A-2, New Port Richey, FL 34653  
Street or P.O. Box City State Zip  
Contact person: Thomas O'Connor Telephone: (813) 846-0904  
Title: Director of Environmental Engineering
10. Landowner(if different than applicant): \_\_\_\_\_  
Mailing address: \_\_\_\_\_  
Street or P.O. Box City State Zip  
Contact person: \_\_\_\_\_ Telephone: (\_\_\_\_) \_\_\_\_\_
11. Cities, towns and areas to be served: Pasco County
12. Population to be served:  
Current: 301,346 Five-Year Projection: 326,620
13. Volume of solid waste to be received: 30 yds<sup>3</sup>/day tons/day gallons/day
14. Date site will be ready to be inspected for completion: 1/1/95
15. Estimated life of facility: 20 years
16. Estimated costs:  
Total Construction: \$ 742,000 Closing Costs: \$ 3,139.00
17. Anticipated construction starting and completion dates:  
From: 8/1/94 To: 1/1/95

C. MATERIALS RECOVERY / VOLUME REDUCTION FACILITY GENERAL INFORMATION

1. Provide brief description of materials recovery / volume reduction facility design and operations planned by this application:

SEE ATTACHED ENGINEERING REPORT

2. Facility site supervisor: Browning Ferris Industries - Jeff Boyd  
Title: Plant Manager, Tampa Bay District Telephone: (813) 573-9150 (current)
3. Disposal area: Total N/A acres; Used \_\_\_\_\_ acres; Available \_\_\_\_\_ acres
4. Security to prevent unauthorized use: Yes ☒ No ☐
5. Site located in: Floodplain ☐ Wetlands ☐ Other ☐
6. Days of operation: 6 days/week
7. Hours of operation: 8:00 to 5:00
8. Number of operating staff: 7
9. Expected useful life: 20 Years
10. Weighing scales used: Yes ☒ No ☐
11. Normal processing rate: \_\_\_\_\_ yd<sup>3</sup>/day 15 tons/day \_\_\_\_\_ gal/day
12. Maximum processing rate: \_\_\_\_\_ yd<sup>3</sup>/day 30 tons/day \_\_\_\_\_ gal/day
13. Charge for waste received: N/A
14. Type of facility (check one or more):

Incinerator ☐  
Pulverizer / shredder ☐  
Compactor/baling ☐  
Sludge concentration ☐  
Other ☐

Composting ☐  
Materials recovery ☒  
Energy recovery ☐  
Pyrolysis ☐

15. Material recovered, tons/week:

1 Paper office  
2.1 Ferrous metals  
0.47 Aluminum  
50 Other: (ONP)

3.6 Glass  
       Non-ferrous metals  
1.7 Plastics  
1 Aseptic Packaging

16. Energy recovery, in units shown:

\_\_\_\_\_ High pressure steam, lb/hr  
\_\_\_\_\_ Low pressure steam, lb/hr  
\_\_\_\_\_ Electricity, kw/hr  
\_\_\_\_\_ Gas, ft<sup>3</sup>/hr  
\_\_\_\_\_ Other:

\_\_\_\_\_ Chilled water, gal/hr  
\_\_\_\_\_ Oil, gal/hr  
\_\_\_\_\_ Oil, BTU/hr  
\_\_\_\_\_ Gas, BTU/hr

17. Process water management:

Recycled: Yes ☐ No ☐ N/A

Treatment method used: \_\_\_\_\_

Discharged to: Surface waters ☐ Underground ☐ Other ☐

Name and Class of receiving water: \_\_\_\_\_

18. Storm Water:

Collected: Yes ☒ No ☐ Type of treatment: \_\_\_\_\_

Name and Class of receiving water: Buckhorn Creek

19. MSSW Permit number or status: 409662.00

20. Final residue produced:

20 % of normal processing rate

25 % of maximum processing rate

Disposed of at (Site name): Pasco County Resource Recovery Facility

21. Supplemental fuel used: N/A

Type: \_\_\_\_\_ Quantity used/hour: \_\_\_\_\_

22. Costs:

Estimated operating costs (material-energy revenue): \$ \_\_\_\_\_

Total cost/ton: \$ \_\_\_\_\_ Net cost/ton: \$ \_\_\_\_\_

23. State pollution control bond financing amount: \$ \_\_\_\_\_

24. Estimated amount of tax exemptions that will be requested: \$ \_\_\_\_\_

**RECEIVED**  
JUN 21 1994  
Department of Environmental Protection  
SOUTHWEST DISTRICT  
BY \_\_\_\_\_

D. SOLID WASTE MANAGEMENT FACILITY PERMIT GENERAL REQUIREMENTS (17-701.320, FAC)

<u>S</u>	<u>LOCATION</u>	<u>N/A</u>	<u>N/C</u>	
<u>X</u>	_____	___	___	1. Six copies, at minimum, of the completed application form, all supporting data and reports; (17-701.320(5)(a), FAC)
<u>X</u>	_____	___	___	2. Engineering and/or professional certification (signature, date and seal) provided on the applications and all engineering plans, reports and supporting information for the application; (17-701.320(6), FAC)
<u>X</u>	_____	___	___	3. A letter of transmittal to the Department; (17-701.320(7)(a), FAC)
<u>X</u>	_____	___	___	4. A completed application form dated and signed by the applicant; (17-701.320(7)(b), FAC)
<u>X</u>	_____	___	___	5. Permit fee specified in Rule 17-4.050, FAC and Rule 17-7-1.320(5)(c), FAC in check or money order, payable to the Department; (17-701.320(7)(c), FAC)
<u>X</u>	_____	___	___	6. An engineering report addressing the requirements of this rule and with the following format: a cover sheet, text printed on 8 1/2 inch by 11 inch consecutively numbered pages, a table of contents or index, the body of the report and all appendices including an operation plan, contingency plan, illustrative charts and graphs, records or logs of tests and investigations, engineering calculations; (17-701.320(7)(d), FAC)
<u>X</u>	_____	___	___	7. Operation Plan; (17-701.320(7)(e)1, FAC)
<u>X</u>	_____	___	___	8. Contingency Plan; (17-701.320(7)(e)2, FAC)
				9. Plans or drawings for the solid waste management facilities in appropriate format (including sheet size restrictions, cover sheet, legends, north arrow, horizontal and vertical scales, elevations referenced to NGVD) showing; (17-702.320(7)(f), FAC)
<u>X</u>	_____	___	___	a. A regional map or plan with the project location;
<u>X</u>	_____	___	___	b. A vicinity map or aerial photograph no more than 1 year old;
		<u>X</u>	___	c. A site plan showing all property boundaries certified by a registered Florida land surveyor;
<u>X</u>	_____	___	___	d. Other necessary details to support the engineering report.
<u>X</u>	_____	___	___	10. Proof of property ownership or a copy of appropriate agreements between the facility operator and property owner authorizing use of property; (17-701.320(7)(g), FAC)

<u>S</u>	<u>LOCATION</u>	<u>N/A</u>	<u>N/C</u>
<u>X</u>	<u>See Report</u>	<u>    </u>	<u>    </u>

11. For facilities owned or operated by a county, provide a description of how, if any, the facilities covered in this application will contribute to the county's achievement of recycling goals contained in Section 403.706,FS; (17-701.320(7)(h),FAC)

<u>    </u>	<u>    </u>	<u>X</u>	<u>    </u>
-------------	-------------	----------	-------------

12. Provide a history and description of any enforcement actions taken by the Department against the applicant for violations of applicable statutes, rules, orders or permit conditions relating to the operation of any solid waste management facility in this state; (17-701.320(7)(i),FAC)

<u>X</u>	<u>See Report</u>	<u>    </u>	<u>    </u>
----------	-------------------	-------------	-------------

13. Proof of publication in a newspaper of general circulation of notice of application for a permit to construct or substantially modify a solid waste management facility; (17-702.320(8),FAC)

<u>    </u>	<u>    </u>	<u>X</u>	<u>    </u>
-------------	-------------	----------	-------------

14. Provide a description of how the requirements for airport safety will be achieved including proof of required notices if applicable; (17-701.320(12),FAC)

S	LOCATION	N/A	N/C
---	----------	-----	-----

				3. Demonstration that facility is not located in a fault area, seismic zone or unstable area as specified in Rule 17-701.420(1)(c), FAC.
--	--	--	--	--

				4. Request for extension of closure criteria as specified in Rule 17-701.640(2)(a) & (2)(b), FAC.
--	--	--	--	---

				a. Demonstration of no alternative disposal capacity.
--	--	--	--	---

				b. Demonstration of no threat to human health or the environment.
--	--	--	--	---

S. MATERIALS RECOVERY FACILITY REQUIREMENTS (17-701.700,FAC)

X				1. Proof of posting a performance bond payable to the Department to cover closing costs, if required; (17-701.700(4),FAC)
---	--	--	--	---

				2. Materials recovery facility requirements; (17-701.700,FAC)
--	--	--	--	---

X				a. Submit information required in Rule 17-701.320,FAC
---	--	--	--	---

X				b. Submit an engineering report including the following:
---	--	--	--	--

X				(1) Description of the solid waste proposed to be collected, stored, processed or disposed;
---	--	--	--	---

X				(2) Projection with assumptions for waste types and quantities expected in future years;
---	--	--	--	--

X				(3) Description of operation and functions of all processing equipment with design criteria and expected performance;
---	--	--	--	---

X				(4) Description of flow of solid waste, expected regular facility operations, procedures for start up and shut down, potential safety hazards and control methods including fire protection;
---	--	--	--	--

X				(5) Description of loading, unloading, and processing areas;
---	--	--	--	--

X				(6) Identification and capacity of temporary on-site storage areas for materials handled and provisions for solid waste and leachate containment;
---	--	--	--	---

		X		(7) Identification of potential ground water and surface water contamination;
--	--	---	--	---

<u>S</u>	<u>LOCATION</u>	<u>N/A</u>	<u>N/C</u>
<u>X</u>	<u>Report</u>	<u>    </u>	<u>    </u>
<u>X</u>	<u>See Report</u>	<u>    </u>	<u>    </u>
<u>X</u>	<u>Report</u>	<u>    </u>	<u>    </u>
<u>X</u>	<u>Report</u>	<u>    </u>	<u>    </u>
<u>X</u>	<u>Report</u>	<u>    </u>	<u>    </u>
<u>    </u>	<u>    </u>	<u>    </u>	<u>    </u>
<u>    </u>	<u>    </u>	<u>    </u>	<u>    </u>
<u>    </u>	<u>    </u>	<u>    </u>	<u>    </u>

(8) Plan for disposal of unmarketable recyclables and residue and contingencies for waste handling during breakdowns.

c. Submit the following operational information:

- (1) Operation and maintenance manual;
- (2) Waste control plan to manage unauthorized wastes;
- (3) Contingency plan for emergencies;
- (4) Closure plan including the following:
  - (a) Notification to Department 180 days prior to closure;
  - (b) Procedures for removal of all waste within 30 days of receipt of final waste;
  - (c) Completion of closure activities within 180 days of receipt of final waste and notification to the Department that closure is complete.

T. CERTIFICATION BY APPLICANT AND ENGINEER OR PUBLIC OFFICER

A. Applicant

The undersigned applicant or authorized representative of Pasco County is aware that statements made in this form and attached information are an application for a Materials Recovery Facility Permit from the Florida Department of Environmental Regulation and certifies that the information in this application is true, correct and complete to the best of his knowledge and belief. Further, the undersigned agrees to comply with the provisions of Chapter 403, Florida Statutes, and all rules and regulations of the Department. It is understood that the Permit is not transferable, and the Department will be notified prior to the sale or legal transfer of the permitted facility.

D. S. Bramlett  
Signature of Applicant or Agent

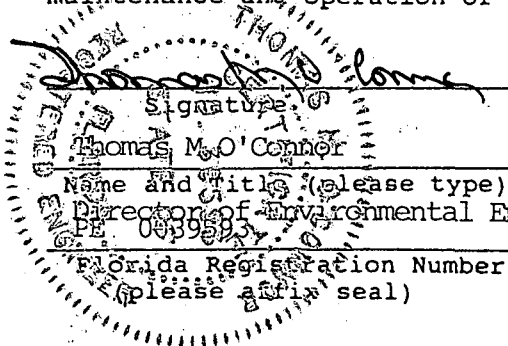
Douglas S. Bramlett, Asst. County Administrator  
Name and Title Utilities Service Branch

Date: 6/20/94

Attach letter of authorization if agent is not a governmental official, owner, or corporate officer.

B. Professional Engineer Registered in Florida or Public Officer as required in Section 403.707 and 403.707(5), Florida Statutes.

This is to certify that the engineering features of this solid waste management facility have been designed/examined by me and found to conform to engineering principals applicable to such facilities. In my professional judgement, this facility, when properly maintained and operated, will comply with all applicable statutes of the State of Florida and rules of the Department. It is agreed that the undersigned will provide the applicant with a set of instructions of proper maintenance and operation of the facility.



8406 Massachusetts Avenue, Suite A-2

Mailing Address

New Port Richey, FL 34653

City, State, Zip Code

813-846-0904

Telephone Number

Date: 6/21/94



RECEIVED  
JUN 21 1994

Department of Environmental Protection  
SOUTH WEST DISTRICT

ENGINEERING REPORT  
FOR  
PASCO COUNTY  
MATERIALS RECOVERY FACILITY  
CONSTRUCTION PERMIT APPLICATION

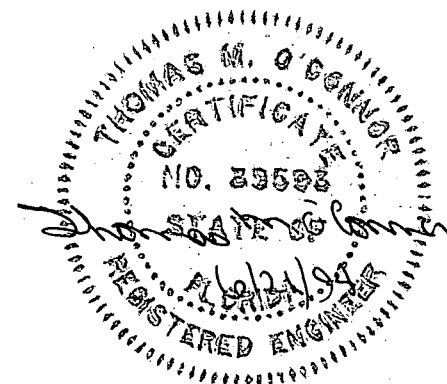
JUNE, 1994

PREPARED FOR:

PASCO COUNTY UTILITIES DEPARTMENT  
7536 STATE STREET  
NEW PORT RICHEY, FLORIDA 34654

PREPARED BY:

KING ENGINEERING ASSOCIATES, INC.  
8406 MASSACHUSETTS AVENUE, SUITE A-2  
NEW PORT RICHEY, FLORIDA 34653



## TABLE OF CONTENTS

<u>ITEM</u>	<u>PAGE NO.</u>
17-701.320 SOLID WASTE MANAGEMENT FACILITY PERMIT REQUIREMENTS, GENERAL .....	1
17-701.700 MATERIALS RECOVERY FACILITIES .....	2
PROJECT AND PROCESS DESCRIPTIONS .....	2
OPERATIONAL REQUIREMENTS .....	4
CLOSURE FINANCIAL RESPONSIBILITIES .....	5
STORMWATER PERMITTING .....	5
 ATTACHMENT A: MATERIALS FORCASTING	
ATTACHMENT B: OPERATING PROCEDURES	
ATTACHMENT C: STARTUP AND SHUTDOWN PROCEDURES	
ATTACHMENT D: POTENTIAL SAFETY ISSUES	
ATTACHMENT E: SCREENING PLAN	
ATTACHMENT F: CONTINGENCY PLAN	
ATTACHMENT G: CLOSURE FINANCIAL RESPONSIBILITIES	
ATTACHMENT H: PROOF OF PROPERTY OWNERSHIP	
ATTACHMENT I: SWFWMD PERMIT	

**PASCO COUNTY  
MATERIALS RECOVERY FACILITY  
CONSTRUCTION PERMIT APPLICATION**

The following information is provided for approval of an "Application for Permit to Construct, Operate, Modify or Close a Solid Waste Management Facility" for the Pasco County Materials Recovery Facility and is delineated according to the applicable section numbers from Rule 17-701 F.A.C., Solid Waste Management Facilities.

**17-701.320 - Solid Waste Management Facility Permit Requirements, General**

- (1) This report has been generated as part of the permit application package for the Materials Recovery Facility.
- (5) Permit Application
  - (a) Six (6) copies of form 17-701.900(1) and all supporting information have been provided in this application package.
  - (b) The information contained in this report, in the permit application and in the project drawings and specifications is of sufficient detail to show how the facility will be constructed and operated.
  - (c) The Materials Recovery Facility will not be a combination facility.
- (6) The permit application, this report and the project drawings and specifications have been signed and sealed by a professional engineer registered in the State of Florida. A qualified representative of the Engineer of Record will be providing periodic construction observation services during the construction of the facility.
- (7) The following has been provided in this permit application package:
  - (a) A letter of application transmittal
  - (b) A completed application form
  - (c) A check for the required permit application fee
  - (d) An engineering report
  - (e) Report appendices
  - (f) Project Drawings
  - (g) Proof of property ownership

(8) Notice of Application

- (a) The County has published a Notice of Application and will submit proof of publication to the Department upon its receipt.

(9) Permits for construction, modification, operation and closure.

- (a) After construction has been completed and before acceptance of any material, the County will submit to the FDEP a certification of construction completion, Form 17-701.900(2), and record drawings signed and sealed by a professional engineer. An inspection by FDEP representatives in the company of County personnel, the engineer and the facility operator shall be arranged. The facility will not be operated, other than for testing, until the certification has been submitted and approved, all permit conditions have been satisfied and the inspection by FDEP personnel has been completed.

**17-701.700 - Materials Recovery Facilities**

- (1) This report has been generated as part of the permit application package for the Materials Recovery Facility.

(2) Project and Process Descriptions

- (a) In January, 1992, Pasco County implemented a county-wide "Blue Bag" curbside recycling program. In this program, county residents co-mingle the following recyclables in County distributed blue plastic bags: aluminum cans, tin cans, glass bottles and jars and code 1 and 2 plastic containers. The County has also established drop-off points for old newspapers and collects office bond and computer "greenbar" paper for recycling. To date, the following monthly average tonnage of each material has been collected:

- Aluminum cans - 14 tons
- Steel/tin cans - 62 tons
- Clear glass - 69 tons
- Green glass - 25 tons
- Amber glass - 15 tons
- Plastic PETE - 19 tons
- Natural HDPE - 22 tons
- Colored HDPE - 8 tons
- Blue plastic bags - 3 tons
- Newspaper - 80 tons
- Office paper - 7 tons

The County also anticipates that 1 ton/month of aseptic containers will be collected from schools and delivered to the facility. Estimates of the amount of material expected to be processed at the facility over the next ten years are presented in Attachment A. The estimated values may vary in accordance with the County's growth.

(b) Process equipment will be as follows:

- One Sorting System
- One Baler Feed Conveyor
- One Baler
- CAT 910 Wheel Loaders
- Forklifts

(1) Normal operating procedures are described in Attachment B.

(2) Procedures for start-up operations and scheduled and unscheduled shutdown operations are included in Attachment C.

(3) Potential safety concerns and control methods are described in Attachment D.

(c) As shown on the attached drawings, the unloading area will consist of roughly a 35' x 110' area of the open floor on the north side of the building. The eastern 35' x 65' section of this area will typically be used for co-mingled glass, plastic and metal items while the western 35' x 36' section will be used for old newspapers and other paper products. Trucks will enter the unloading area through the three (3) 20' x 24' overhead doors in the north wall of the building and unload the material onto the facility floor. Front-end loaders will then push the material into piles in order to keep sections of the unloading floor open and continually push co-mingled materials into the Sorting System feed pit to maintain a constant flow process. At allotted times, the front-end loaders will also push old newspapers and other paper products from the floor into the baler feed conveyor pit.

The processing areas will consist of roughly a 75' x 40' area for the Sorting System and a 110' x 60' area for the sorted materials storage stalls, the baler feed conveyor and the baler. The bins containing the sorted materials at the Sorting System will be carried by forklift or wheeled to the storage stalls where they will be emptied. Front-end loaders will then push the sorted materials from the storage stalls into the baler feed conveyor pit. Bales will be carried by forklift to the bale storage area.

The loading area will consist of approximately a 70' x 50' floor area in the southeast corner of the building used to store bales and load them into tractor/trailers. Bales will be loaded onto the tractor/trailers through two 10' x 12' overhead doors at the loading dock. The loading dock has been designed to allow two tractor trailers to be loaded simultaneously. On the outside of the eastern wall of the building, sorted glass will be stored in stalls and loaded onto trucks utilizing front-end loaders.

The materials which will be processed at the facility are not expected to produce leachate.

- (d) On-site storage areas will consist of the unloading area of the floor, the bins at the Sorting System, the storage stalls at the baler feed conveyor, the bale storage area and the storage stalls for sorted glass. At a delivery rate of 10 tons per day, the tipping floor has adequate capacity to store 8-10 days of material. Non-processible wastes and residues will be stored in a rolloff container/dumpster located on the truck ramp at the loading dock. Unauthorized/hazardous wastes will not be stored at the facility and will be removed for proper disposal prior to shutdown each day.
- (e) Solid waste will be contained in a rolloff container/dumpster located on the truck loading ramp. Leachate and runoff on the loading ramp will be directed to a sump in the bottom of the ramp. The sump will empty into the on-site sewer system.
- (f) There should be no ground and surface water contamination resulting from operating the facility.
- (g) Unmarketable recyclable materials and residue and excess material resulting from process interruptions will be hauled to the Pasco County Resource Recovery Facility which is located on the property adjacent to the proposed site for the materials recovery facility. At the Resource Recovery Facility the materials will either be converted to energy or landfilled. Putrescible wastes should not exist at the materials recovery facility.

(3) Operational Requirements.

- (a) An operation and maintenance manual describing the facility operations, the levels of staff assigned to each crew and the equipment installed at the facility will be compiled during construction of the project and will be completed and approved prior to the facility receiving any material.

- (b) The screening plan for incoming materials is provided in Attachment E.
- (c) A contingency plan to cover interruptions in operations is provided in Attachment F.
- (d) Closure of the facility will be conducted in accordance with FDEP requirements. The Department will be notified 180 days prior to the facility closure. No waste will be received by the facility after the effective closure date. Within 30 days of closure, all residue will be removed from the facility and within 180 days of closure the closing process will be completed. The Department will be notified upon completion of the closing process.

The facility will be constructed on the County-owned Shady Hills Wastewater Treatment Plant site. The facility is being designed such that, at closure, the structure can be utilized as a maintenance/storage facility. Because the proposed site is located adjacent to the Pasco County Resource Recovery Facility (RRF), it is anticipated that at closure any remaining residue will be disposed of at the RRF by the County. The facility equipment will be the property of Browning-Ferris and will be removed by BFI at closure.

- (4) Financial responsibilities for closure are described in Attachment G.
- (5) The materials recovery facility will be constructed on the County's Shady Hills Subregional WWTP site. A SWFWMD permit has already been issued for the construction activities related to the upgrade of the facility and the construction of the Central Sludge Processing Facility. This SWFWMD permit also identifies the proposed Materials Recovery Facility. Construction of the MRF will therefore be covered by the existing SWFWMD permit. A copy of the permit has been included in Attachment I.

MRF2.REP

**ATTACHMENT A**  
**Materials Forecasting**



FORECASTING OF APPLICABLE RECYCLING MATERIALS  
(Other materials which may be added will increase these estimates)

	<u>OFFICE PAPER</u>	<u>NEWSPAPER</u>	<u>CURBSIDE</u>	<u>SUBTOTAL</u>
October 1 thru September 30, 1992	56.9	690.70	3,030.88	3,778.48
October 1 thru September 30, 1993	30.98	1,071.50	4,169.40	5,271.88
October - March Actual	23.53	614.29	2,076.05	
April - September Projected	23.53	614.29	2,076.05	
October 1 thru September 30, 1994	47.06	1,228.58	4,152.01	5,427.65
October 1 thru September 30, 1995	48.47	1,265.44	4,276.57	5,590.48
October 1 thru September 30, 1996	49.93	1,303.40	4,404.87	5,758.19
October 1 thru September 30, 1997	51.42	1,342.50	4,537.01	5,930.94
October 1 thru September 30, 1998	52.97	1,382.78	4,673.12	6,108.87
October 1 thru September 30, 1999	54.56	1,424.26	4,813.32	6,292.13
October 1 thru September 30, 2000	56.19	1,466.99	4,957.72	6,480.90
October 1 thru September 30, 2001	57.88	1,511.00	5,106.45	6,675.32
October 1 thru September 30, 2002	59.61	1,556.33	5,259.64	6,875.58
October 1 thru September 30, 2003	61.40	1,603.02	5,417.43	7,081.85
October 1 thru September 30, 2004	63.24	1,651.11	5,579.95	7,294.31

**ATTACHMENT B**  
**Operating Procedures**

#### NORMAL OPERATING PROCEDURE

The Recyclery at Pasco County will receive approximately 10 TPD of commingled rigid containers, i.e., PET, HDPE, ALUM., FE, and Glass in three colors. The material will arrive at the site in county collection vehicles after being weighed at a remote scale. The collection vehicle will tip the materials on the tipping floor and exit the building. The Cat 910 wheel loader will push the materials onto the pit conveyor which will convey the recyclables up an incline to the sorting system.

The rigid containers will pass through a magnet to remove the FE, and a trommel screen to remove the mixed broken glass and other small residue. The remaining items will then pass through an air classifier which will pneumatically separate the light materials (plastics and aluminum) from the heavy materials (glass). These plastics will be sorted manually as natural HDPE, colored HDPE, and PET. Aluminum will be negatively sorted off the end of the conveyor. Residue will be manually sorted onto a trash conveyor beneath the sorting conveyor. Glass will be manually sorted as green and amber, and negatively sorted as clear. Again, residue will be manually sorted onto a trash conveyor beneath the sorting conveyor.

All materials will be sorted into 2-4 cy self-dumping hoppers which will be dumped into the appropriate bunker when full. Residue will be conveyed into hoppers or roll-offs and transferred to the landfill. When sufficient quantities of a given item are bunkered, the material will be pushed onto the baler feed conveyor by the wheel loader and conveyed into the baler and baled into 30" x 30" x 60" bales. These will be stacked in a designated area or loaded directly into a trailer for shipment to market.

Paper products, i.e., OCC and ONP will arrive already sorted and will be bunkered alongside the baler feed conveyor for baling at the appropriate time.

All outgoing marketable materials will be weighed at a remote scale and trucked to market for sale.

**ATTACHMENT C**

**Startup and Shutdown Procedures**

#### OPERATION START-UP, SCHEDULED AND UNSCHEDULED SHUTDOWNS

The Recyclery will be ready to receive incoming materials when the building is complete and all equipment has been installed and tested. Equipment vendors will be in attendance for training and start-up assistance to ensure that the equipment is being properly operated and to help with minor start-up problems that may arise.

The facility will not require scheduled shutdowns for repairs or maintenance or equipment since it will only be operating one 8-hour shift per day. Maintenance and repairs will be performed after working hours by the maintenance mechanic or vendor representatives.

Unscheduled shutdowns caused by weather or other unforeseen reasons will result in extended operating hours for the facility until production/processing is back to normal. In the event of a major problem requiring an extended shutdown, the tipping floor is adequate for 8-10 days of tipping at 10 TPD. BFI has never experienced more than a 2-3 day shutdown in any of its Recycleries.

**ATTACHMENT D**  
**Potential Safety Issues**

#### POTENTIAL SAFETY CONCERNS AND CONTROL METHODS

The personnel working in the plant will be utilizing Personal Protective Equipment relating to their job. BFI will supply hearing protection, safety glasses, dust mask and hard hats. There will be a steel toe boot program implemented to afford those permanent employees the opportunity to improve their safety protection.

All personnel will be trained in the correct operation and maintenance of the equipment. A lock-out, tag-out program will be in place when BFI begins operations. All forklift drivers will be certified by BFI to operate this equipment as well as thorough instruction of the front loader.

The facility will have a monthly safety audit by the district safety manager. Also, a safety meeting will be held monthly relating to new compliance issues, regulations, additional training, DOT, and other pertinent subjects.

ATTACHMENT E

Screening Plan



#### SCREENING PLAN FOR INCOMING MATERIAL

A screening program for hazardous material and infectious waste will be in effect at the materials recovery facility. Employees will be trained in the identification and labeling associated with hazardous waste and infectious waste. In the event that any hazardous material or infectious waste is detected at the facility, all applicable regulatory and emergency response agencies are notified immediately and cleanup actions will be initiated.

Other unacceptable materials such as white goods, tires, batteries, etc. will be segregated to an isolated area of the tipping floor. These items will then be hauled off-site for proper disposal/reuse.

**ATTACHMENT F**

**Contingency Plan**

#### CONTINGENCY PLANS TO COVER INTERRUPTIONS IN OPERATIONS

Interruption of operations will not affect BFI's plan to any large degree. Currently BFI has two other facilities in a hundred-mile radius that can support the activity that is generated at the Pasco County Recyclery. They are in a position to direct personnel, equipment, and man-power to assist in overcoming any problem that may arise. Also, there are two transportation facilities that could be designated to support an effort to move the recycled material to the other plants if there was a need.

The Pasco County Recyclery has an adequate tipping floor to inventory material for 8-10 days. BFI's experience has shown we have never needed that much time on any occasion.

**ATTACHMENT G**

**Closure Financial Responsibilities**

PASCO COUNTY RECYCLING FACILITY CLOSURE

COST ESTIMATE

Pasco County's Recycling Facility will be owned by Pasco County but the equipment supplied for the facility will be purchased and owned by Browning-Ferris Industries as included in their award of bid on 4/26/94 to operate the facility for 10 years with a five year extension clause.

There are two issues involved in responsibilities as outlined according to D.E.P. 17.701.700 concerning when the owner and operator of the facility are separate entities:

- 1.) Equipment - Adequate coverage is supplied by the posting of a \$750,000.00 performance bond (Exhibit "A"). This bond coupled with the value of the equipment will ensure the ability to market said equipment if abandoned.
- 2.) Stockpiled Recyclables - According to the contractor, Browning-Ferris Industries (Exhibit "B") there is an estimated 60 tons at a given time. This 60 tons would equate to a removal fee of \$400.00 (Exhibit "C") and a resultant tipping fee of \$2,739.00 based on \$45.65 a ton (Exhibit "D").

As with the other closure amounts, Pasco County will restrict the estimated cost of \$3,139.00 in accordance with their Letter of Understanding (Exhibit "E").

EXHIBIT "A"

**CNA INSURANCE COMPANIES**

CNA Plaza, Chicago, Illinois 60685

BOND NO. 124 239 429

**PERFORMANCE BOND**

KNOW ALL MEN BY THESE PRESENTS: That we BROWNING-FERRIS INDUSTRIES OF FLORIDA, INC., 11500 43rd Street, North, Clearwater, FL 34622, Principal, and CONTINENTAL CASUALTY COMPANY, Surety, are held and firmly bound unto PASCO COUNTY BOARD OF COMMISSIONERS, 8919 Government Drive, New Port Richey, FL 34654, Obligee, in the sum of SEVEN HUNDRED FIFTY THOUSAND AND NO/100----- Dollars (\$750,000.00\*\*\*\*\*)

for the payment of which we bind ourselves, our legal representatives, successors and assigns, jointly and severally, firmly by these presents.

WHEREAS, Principal has entered into a contract with Obligee, dated MAY 5, 1994 for OPERATION OF A MATERIAL RECOVERY FACILITY FOR THE ANNUAL TERM OF May 5, 1994 to May 5, 1995

copy of which contract is by reference made a part hereof.

NOW, THEREFORE, if Principal shall faithfully perform such contract or shall indemnify and save harmless the Obligee from all cost and damage by reason of Principal's failure so to do, then this obligation shall be null and void; otherwise it shall remain in full force and effect.

Any suit under this bond must be instituted before the expiration of two (2) years from the date on which final payment under the contract falls due.

No right of action shall accrue on this bond to or for the use of any person or corporation other than the Obligee named herein or the heirs, executors, administrators or successors of the Obligee.

Signed, sealed, and dated MAY 5, 1994

BROWNING-FERRIS INDUSTRIES OF  
FLORIDA, INC. (Principal)

By: Charles H. Laws (Seal)  
Charles H. Laws, Vice President

COUNTERSIGNED BY:

Nancy H. Zaleski  
Nancy H. Zaleski, Florida Resident Agent

(Surety)  
CONTINENTAL CASUALTY COMPANY  
By: Barbara S. MacArthur (Seal)  
Barbara S. MacArthur, Attorney-in-Fact

G-105578-A

**CNA**

For All the Commitments You Make

# Continental Casualty Company



For All the Commitments You Make®

AN ILLINOIS CORPORATION

## POWER OF ATTORNEY APPOINTING INDIVIDUAL ATTORNEY-IN-FACT

Know All Men by these Presents, That CONTINENTAL CASUALTY COMPANY, a corporation duly organized and existing under the laws of the State of Illinois, and having its principal office in the City of Chicago, and State of Illinois, does hereby make, constitute and appoint Harry G. Stevens, Jr., Martha Reeves, Ronald A. Santaniello, Lesa A. Shacklett, Gary D. Eklund, Barbara S. MacArthur, Abbie H. Brown, Dave Henritze, K. E. MacArthur, Nancy Nix, Individually of Atlanta, Georgia its true and lawful Attorney-in-fact with full power and authority hereby conferred to sign, seal and execute in its behalf bonds, undertakings and other obligatory instruments of similar nature

- In Unlimited Amounts -

and to bind CONTINENTAL CASUALTY COMPANY thereby as fully and to the same extent as if such instruments were signed by the duly authorized officers of CONTINENTAL CASUALTY COMPANY and all the acts of said Attorney, pursuant to the authority hereby given are hereby ratified and confirmed.

This Power of Attorney is made and executed pursuant to and by authority of the following By-Law duly adopted by the Board of Directors of the Company.

### "Article IX—Execution of Documents

Section 3. Appointment of Attorney-in-fact. The Chairman of the Board of Directors, the President or any Executive, Senior or Group Vice President may, from time to time, appoint by written certificates attorneys-in-fact to act in behalf of the Company in the execution of policies of insurance, bonds, undertakings and other obligatory instruments of like nature. Such attorneys-in-fact, subject to the limitations set forth in their respective certificates of authority, shall have full power to bind the Company by their signature and execution of any such instruments and to attach the seal of the Company thereto. The Chairman of the Board of Directors, the President or any Executive, Senior or Group Vice President or the Board of Directors, may, at any time, revoke all power and authority previously given to any attorney-in-fact."

This Power of Attorney is signed and sealed by facsimile under and by the authority of the following Resolution adopted by the Board of Directors of the Company at a meeting duly called and held on the 17th day of February, 1993.

"Resolved, that the signature of the President or any Executive, Senior or Group Vice President and the seal of the Company may be affixed by facsimile on any power of attorney granted pursuant to Section 3 of Article IX of the By-Laws, and the signature of the Secretary or an Assistant Secretary and the seal of the Company may be affixed by facsimile to any certificate of any such power, and any such power or certificate bearing such facsimile signature and seal shall be valid and binding on the Company. Any such power so executed and sealed and certified by certificate so executed and sealed shall, with respect to any bond or undertaking to which it is attached, continue to be valid and binding on the Company."

In Witness Whereof, CONTINENTAL CASUALTY COMPANY has caused these presents to be signed by its Group Vice President and its corporate seal to be hereto affixed on this 17th day of September, 19 93.

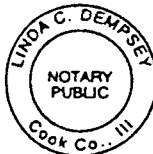
State of Illinois } ss  
County of Cook }



CONTINENTAL CASUALTY COMPANY

M. C. Vonnahme Group Vice President.

On this 17th day of September, 19 93, before me personally came M. C. Vonnahme, to me known, who, being by me duly sworn, did depose and say: that he resides in the Village of Downers Grove, State of Illinois; that he is a Group Vice President of CONTINENTAL CASUALTY COMPANY, the corporation described in and which executed the above instrument; that he knows the seal of said Corporation; that the seal affixed to the said instrument is such corporate seal; that it was so affixed pursuant to the said instrument is such corporate seal; that it was so affixed pursuant to authority given by the Board of Directors of said corporation and that he signed his name thereto pursuant to like authority, and acknowledges same to be the act and deed of said corporation.



Linda C. Dempsey  
Linda C. Dempsey Notary Public.  
My Commission Expires October 19, 1994

### CERTIFICATE

I, George R. Hobaugh, Assistant Secretary of CONTINENTAL CASUALTY COMPANY, do hereby certify that the Power of Attorney herein above set forth is still in force, and further certify that Section 3 of Article IX of the By-Laws of the Company and the Resolution of the Board of Directors, set forth in said Power of Attorney are still in force. In testimony whereof I have hereunto subscribed my name and affixed the seal of the said Company this 5th day of MAY, 19 94.



George R. Hobaugh

Assistant Secretary.



BROWNING-FERRIS INDUSTRIES OF FLORIDA, INC.

June 15, 1994

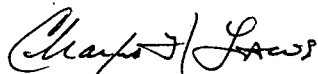
Mr. Robert Sigmond  
Utilities Services Branch  
Pasco County Government Complex  
7536 State Street  
New Port Richey, Fl. 34654

Dear Bob:

In response to the question concerning the maximum amount of recycled material that will ever be on hand at the Pasco County Recyclery, through our projections of product movement BFI feels there will never be more than 60 tons present at any one time.

I hope this will provide you with information to complete your application.

Sincerely,

A handwritten signature in cursive script, appearing to read 'Charles H. Laws'.

Charles H. Laws  
Vice President

CHL: sf



EXHIBIT "C"**Waste Management of Pasco County**

14201 State Road 54  
P.O. Box 256  
Odessa, Florida 33556  
800/255-7172 Florida only  
813/621-3053



A Waste Management Company

June 15, 1994

Mr. Robert Sigmond  
Utilities Fiscal Services/  
Special Projects  
Director

Re: Cost Estimate

Dear Mr. Sigmond,

In reviewing transportation cost for 60 tons of recyclables from the recycle center to the Waste-to-Energy facility in Pasco County I would propose the following:

Waste Management of Pasco would deliver open top 40 yard roll-off containers to minimize total loads to be hauled.

Depending on the type of recyclables loaded, the total loads could range from 5-10 loads, cost per load would be \$40.00. This estimation would place total transportation costs at no more than \$400.00.

These costs are only on transportation, any tipping fees in the Waste-to-Energy Facility would be additional.

If I can be of any further assistance, please feel free to contact me at 1-880-255-7172 ext.501.

Sincerely,

*Phil Bader*  
Phil Bader  
Division Manager  
Operations

"EXHIBIT D"

PASCO COUNTY, FLORIDA  
INTEROFFICE MEMORANDUM

TO: Honorable Chairman and  
Members of the Board of  
County Commissioners

DATE: 8/23/93

FILE: UTSWFS93-672

THRU: Douglas S. Bramlett  
Assistant County Administrator  
(Utilities Services)

SUBJECT: Resolution Establishing Annual  
Disposal Assessments, Tipping Fees,  
and Other Rates for the Solid Waste  
Disposal and Resource Recovery System

FROM: Robert J. Sigmund  
Solid Waste/Fiscal  
Services Director

REFERENCES: Ordinance No. 89-07

It is recommended that the data herein presented be given formal consideration by the County Commission.

DESCRIPTION AND CONDITIONS:

Attached hereto please find a resolution establishing annual disposal assessments, tipping fees, and other rates, fees, and charges for funding the Solid Waste Disposal and Resource Recovery System for Fiscal Year 1993-94.

The resolution is being presented pursuant to the provisions of Pasco County Ordinance No. 89-07, which provides for the levy of assessments and charges for the disposition of solid waste into the County's Solid Waste Disposal and Resource Recovery System.

The rates, fees, and charges for Fiscal Year 1993-94 have increased 12.0 percent, which for a single-family residence represents a change from \$50.00 to \$56.00.

The Solid Waste Management Citizens Advisory Committee met on July 28, 1993, to review the Solid Waste Section's Budget. After discussions among the members and staff, the Citizens Advisory Committee voted to accept staff's recommendation to go with the increase provided that all items are reviewed to see if they are necessary for budgeting purposes.

This resolution establishes the final specific assessments, tipping fees, and other charges. This resolution sets forth the rates to be considered by the Board and to be utilized in billing the owners of improved real property of the annual disposal assessment.

ALTERNATIVES AND ANALYSIS:

Approval of the resolution establishing annual disposal assessments, tipping fees, and other rates for the Solid Waste Disposal and Resource Recovery System will provide funding for the Solid Waste Disposal and Resource Recovery System.

Disapproval of the resolution establishing annual disposal assessments, tipping fees, and other rates for the Solid Waste Disposal and Resource Recovery System will not provide funding for the Solid Waste Disposal and Resource Recovery System.

RECOMMENDATION AND FUNDING:

It is recommended that the Board of County Commissioners approve the attached resolution establishing annual disposal assessments, tipping fees, and other rates, fees, and charges for funding the Solid Waste Disposal and Resource Recovery System, and authorize the Chairman to execute the same.

No funding is required.

ATTACHMENT:

1. Resolution

DSB/RJS/fees

BY COMMISSIONER \_\_\_\_\_

RESOLUTION NO. 93-337

RESOLUTION BY THE BOARD OF COUNTY COMMISSIONERS  
OF PASCO COUNTY, FLORIDA, ESTABLISHING ANNUAL  
DISPOSAL ASSESSMENTS, TIPPING FEES, AND OTHER  
RATES, FEES, AND CHARGES FOR THE FUNDING OF THE  
SOLID WASTE DISPOSAL AND RESOURCE RECOVERY  
SYSTEM PURSUANT TO PASCO COUNTY ORDINANCE  
NO. 89-07; AUTHORIZING PREPARATION OF ANNUAL  
DISPOSAL ASSESSMENTS ROLL AND PREPARATION OF  
APPROPRIATE BILLS

WHEREAS, on or before the fifteenth of September of each year, the Board of County Commissioners is required to adopt a Rate and Use Classification Resolution incorporating a determination of solid waste generation rates, annual rates, fees, charges, assessment or service charges to be imposed upon the owners of improved real property and a schedule of tipping fees to be charged by the County for receiving and disposing of solid waste not generated within the County or for those properties not subject to assessments and for receiving and disposing of special waste; and,

WHEREAS, the Board of County Commissioners has heretofore provided notice of the public hearings to be held on September 8, 1993, for the purpose of adopting said resolution in accordance with the requirements of Pasco County Ordinance No. 89-07.

NOW, THEREFORE, BE IT RESOLVED by the Board of County Commissioners of Pasco County, Florida, in regular session duly assembled, that said Board hereby determines as follows:

1. That those rates and use classifications set forth in Exhibit "A" are hereby adopted as the annual disposal assessments for improved real property within the County to be levied and assessed upon said improved real property, due and payable on or before March 31, 1994, in order to fund the construction, operation, and the expenses of the County's Solid Waste Disposal and Resource Recovery System for Fiscal Year 1993-94.

2. That those tipping fees set forth in Exhibit "B" are the tipping fees to be charged by the County for receiving and disposing of solid waste not generated within the County and for receiving and disposing of solid waste generated from property not subject to assessment.

3. That those tipping fees set forth in Exhibit "C" are the tipping fees to be charged by the County for disposing of special waste in the County's Solid Waste Disposal and Resource Recovery System.

4. The Pasco County Utilities Services Branch is hereby directed to prepare the appropriate assessment roll of the Annual Disposal Assessments for certification of improved residential property assessments to the Tax Collector for collection and to prepare the appropriate bills for owners of improved nonresidential property for collection in accordance with Pasco County Ordinance No. 89-07.

; DONE AND RESOLVED this 14 day of September, 1993.

(SEAL)

ATTEST:

**JED PITTMAN** by

BY:

Debra Dzyarski  
JED PITTMAN, CLERK

BOARD OF COUNTY COMMISSIONERS  
OF PASCO COUNTY, FLORIDA

BY:

Ann Hildebrand  
ANN HILDEBRAND, CHAIRMAN

APPROVED AS TO LEGAL FORM AND CONTENT  
Office of the County Attorney

BY:

[Signature]  
ATTORNEY

EXHIBIT "A"

PASCO COUNTY SOLID WASTE MANAGEMENT PROGRAM  
USER CHARGE SYSTEM

A. Residential Uses

<u>USE CODE</u>	<u>DESCRIPTION</u>	<u>ERU ASSIGNMENT</u>
1	Single-Family Residential	1.00 per unit
2	Mobile Homes	1.00 per unit
3	Multifamily (5 or more)	0.75 per unit
4	Condominiums	0.77 per unit
6	Retirement Homes	0.10 per 100 sq. ft.
8	Multifamily (less than 5)	0.75 per unit
9	Mobile Homes - Parks	0.75 per unit
10	R.V. Parks	0.20 per space

B. Nonresidential Uses/With Available Cubic Volume Generation Rates

Where actual cubic volume solid waste generation rates, as determined by the container size and frequency of pulls, have been previously provided to the County by one of its licensed collectors or a municipal collection service, the assessment for such nonresidential property shall be determined by multiplying the calculated tonnage (cubic yards multiplied by conversion factor; see Note A), or fraction thereof, by the per-ton disposal charge of Forty-Five and 65/100 Dollars (\$45.65).

C. Nonresidential Uses/With Available Actual Generation Rates

Where actual solid waste generation rates, as determined by the weighted tonnage, have been previously provided to the County by one of its licensed collectors, a municipal collection service, or landfill records, the assessment for such nonresidential property shall be determined by multiplying the actual tonnage, or fraction thereof, by the per-ton disposal charge of Forty-Five and 65/100 Dollars (\$45.65).

D. Nonresidential Uses/With No Available Generation Rates

<u>USE CODE</u>	<u>DESCRIPTION</u>	<u>ERU ASSIGNMENT*</u>
11	Stores - One Story	0.35
12	Stores/Office/SFR	0.50
13	Department Store	0.55
14	Supermarket	0.25
16	Shopping Center - Local	0.35
17	Office - One Story	0.15
18	Office - Multistory	0.15
19	Professional Building	0.15
20	Airports	0.15
21	Restaurants	0.95
22	Drive-In Restaurants	2.65

<u>USE CODE</u>	<u>DESCRIPTION</u>	<u>ERU ASSIGNMENT*</u>
23	Financial Institutions	0.20
24	Insurance Company - Regional Office	0.15
25	Service Shops	0.25
26	Service Stations	1.25
27	Auto Sales, Repair, etc.	0.35
28	Parking Lots	0.05
29	Wholesale Manufacturing, etc.	0.25
30	Florist, Greenhouses	0.20
31	Theaters - Drive-In	0.15
32	Theaters - Enclosed	0.25
33	Night Clubs, Bars, etc.	0.50
34	Bowling Alleys, Arenas	0.20
36	Camps	.68-9.46 B
38	Golf Courses	0.40
39	Hotels/Motels	0.30
41	Light Manufacturing	0.30
42	Heavy Industrial	0.30
43	Lumber Yards	.9-2.1 B
44	Packing Plants	1.00
45	Breweries, Wineries, etc.	0.55
46	Food Processing	0.55
47	Mineral Processing	0.00
48	Warehousing	0.30
49	Open Storage	0.05
50	Mini Warehouse	0.03
71	Churches	0.07
72	Schools, Colleges - Private	0.15
73	Hospitals - Private	0.05
74	Homes for the Aged	0.10
76	Mortuaries, Cemeteries, etc.	0.10
77	Clubs, Lodges, Halls	0.20
81	Military	0.35
83	Schools - Public	0.15
84	Colleges	0.10

<u>USE CODE</u>	<u>DESCRIPTION</u>	<u>ERU ASSIGNMENT*</u>
85	Hospitals	0.05
86	Other County	0.15
87	Other State	0.15
88	Other Federal	0.15
89	Other Municipal	0.15
91	Utilities	0.10
93	Petroleum and Gas	0.15
94	Utilities	0.10
95	Convenience Stores	1.15
	Metal Building - Commercial	.06-1.25 C
	Special Assessment - Mall Anchor Stores	.005-3.5 C

The assessment for Nonresidential Uses/With No Available Generation Rates shall be determined by multiplying the Equivalent Residential Unit (ERU), or fraction thereof, by Fifty and 00/100 Dollars (\$50.00).

\*ERU Assignment based upon 100 square feet of improvement unless noted.

E. Special Classifications and Credits for Abandoned Buildings, Mobile Home Parks, Vacant Buildings, and Nonresidential Properties/With No Available Generation Rates

1. Abandoned Buildings - In the event the landowner of real property can demonstrate that an improvement or structure located upon the real property, which might otherwise be subject to an annual solid waste disposal assessment, has been abandoned for a period of at least twelve (12) months prior to September 15 of the particular billing year, then said owner may file an annual return requesting an abandoned building classification and agreeing to the forfeiture of the certificate of occupancy for the subject building. Upon approval of the annual return by the County, the building will be classified as abandoned and shall not be subject to assessment hereunder nor shall it be further occupied until a new certificate of occupancy is obtained pursuant to the applicable building code.
2. Vacant Buildings - In the event the owner or tenant of nonresidential real property can demonstrate that an improvement or structure located upon the real property, which might otherwise be subject to the full annual solid waste disposal assessment, has remained completely vacant for a period of at least twelve (12) months prior to September 15 of the particular billing year, then said owner or tenant may file an annual return requesting a vacant building classification. Upon approval of the annual return by the County, the building will be classified as vacant and shall be subject to only a minimum service availability charge of Fifty and 00/100 Dollars (\$50.00).
3. Nonresidential Low Generator Credit - In the event the owner, tenant, or other occupant of a nonresidential property can demonstrate that the solid waste actually generated by the building or improvement, which might otherwise be subject to the annual solid waste assessment fees set forth in Section C above, is less than the average generation rate utilized by the County as set forth in said Section, then said owner, tenant, or other occupant may file an annual return requesting a low generator credit. Upon approval of the annual return by the County, the building shall receive a credit against its solid waste annual assessment equivalent to the percentage difference between the assessed generation rate and the actual generation rate. Upon approval of the annual return by the County, the building will be classified as a low generator. However, in no event shall

such adjustment result in an assessment less than the minimum service availability charge of Fifty and 00/100 Dollars (\$50.00).

DOLLAR VALUATION OF ASSESSMENTS

For purposes of schedule, an Equivalent Residential Unit (ERU) for single-family home shall equal Fifty and 00/100 Dollars (\$50.00) based upon average generation rate of 1.095 tons.

- ERU assignments for Use Codes 11 and higher are per 100 square feet.

NOTES

- A - Conversion factors for solid waste assessment to convert cubic volumes into calculated tonnages.

Regular cubic yards: One cubic yard = .0526 calculated tons.  
Compacted cubic yards: One cubic yard = .2104 calculated tons.

- B - ERU assignments based on on-site survey to be completed annually.

- C - Metal Buildings and Mall Anchor Stores assigned ERU based on use code, actual use, or class of structure from tax assessor records.



EXHIBIT "B"

Preliminary tipping fee to be charged by the County for receiving and disposing of solid waste not generated within the County, or generated from improved real property within the County which is not subject to special assessments as a matter of law except in the case of out-of-County waste as modified by special contract or agreement by the Pasco County Board of County Commissioners:

\$45.65 per ton

EXHIBIT "C"

Preliminary tipping fee to be charged by the County for disposing of special waste in the County's Solid Waste Disposal and Resource Recovery System.

Special Wastes	\$45.65 per ton
New Construction Debris	\$45.65 per ton

Unweighed Vehicle Rates

Half-Ton Truck or Equivalent Tonnage	\$15.00 per load
Single-Axle Trailer	\$25.00 per load



EXHIBIT "E"

JED PITTMAN

CLERK OF CIRCUIT COURT, PASCO COUNTY

*Chris*

DADE CITY  
904-521-4542  
SUNCOM 637 1542  
NEW PORT RICHEY  
813-847-8161

April 6, 1992

Mr. Fred Wick  
Department of Environmental Regulation  
2600 Blair Stone Road  
Tallahassee, FL 32399-2400

RE: PASCO COUNTY - Letter of Understanding - Landfill  
Closure and Long-Term Care

Dear Mr. Wick:

Attached is the referenced letter which should satisfy  
your department's requirements.

Should you have any questions, please contact me.

Thank you.

Sincerely,

  
Jay Kominsky  
Director, Financial Services

/do/OLS348.2

PASCO COUNTY

MAY 10 1992

ENVIRONMENTAL  
DEPARTMENT

Reply to:

- ☐ Pasco County Courthouse, 705 E. Live Oak Ave., Dade City, FL 33525
- ☐ Pasco Government Center, PO Drawer 338, New Port Richey, FL 34656-0338

09-86

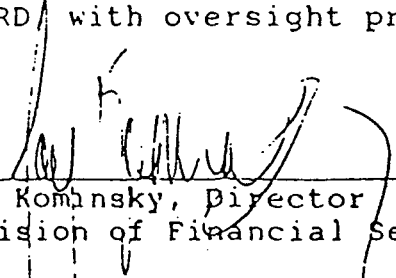
ADM

# LETTER OF UNDERSTANDING

The Pasco County Board of County Commissioners (the "BOARD"), through the Office of the Pasco County Clerk of the Circuit Court (the "CLERK"), Division of Financial Services, established an interest-bearing account (no. 251192) with the Florida State Board of Administration. The beneficiary of this account is the BOARD; the account is managed by the CLERK.

This account includes a restricted cash subsidiary account ("SUBACCOUNT") maintained on the books of account of the BOARD for the sole purpose of accumulating funds for Landfill Closure and Long-Term Care of: the Ridge Road Landfill; the East Pasco Sanitary Landfill; the West Pasco Class I and Class III Landfills; and any future sites according to Rule 17-701.076, FAC(1989). The total amount to be maintained in this SUBACCOUNT shall be determined, from time to time, by a Registered Professional Engineer with the State of Florida, and approved by the Florida Department of Environmental Regulation.

It is the intent that funds maintained in this SUBACCOUNT are not to be used for any purpose other than Landfill Closure and Long-Term Care, as described above; disbursement from this SUBACCOUNT must be approved by the BOARD with oversight provided by the CLERK.

  
\_\_\_\_\_  
Jay Kominsky, Director  
Division of Financial Services

OLS348

**ATTACHMENT H**

**Proof of Property Ownership**

9.00  
150  
2970.00  
2980.50

540,000  
25-24-17

WARRANTY DEED

This indenture made the 12th day of January, 1989 by JAMES H. DORMANY, JR. and EDNA LEE DORMANY, husband and wife, individually and as trustees under the DORMANY FAMILY REVOCABLE TRUST AGREEMENT dated June 14, 1985, hereinafter called the grantor, to PASCO COUNTY, a political subdivision of the State of Florida, whose post office address is 705 East Live Oak Avenue, Dade City, Florida 33525, hereinafter called the grantee:

Witnesseth: That the grantor, for and in consideration of the sum of Ten Dollars and other good and valuable consideration, receipt whereof is hereby acknowledged, hereby grants, bargains, sells, conveys, remises, releases, and transfers unto the grantee, all that certain land situate in Pasco County, Florida, to-wit:

The East 1/2 of the Southwest 1/4, Section 25, Township 24 South, Range 17 East, Pasco County, Florida, LESS the West 33 feet of the Southeast 1/4 of the Southwest 1/4 and the West 33 feet of the South 66 feet of the Northeast 1/4 of the Southwest 1/4 of Section 25, Township 24 South, Range 17 East, Pasco County, Florida. 10-10-88 01-12-89 2105

Parcel Identification No. 25-24-17-0000-00300-0000

Together with all the tenements, hereditaments, and appurtenances thereto belonging or in any wise appertaining.

RECORD/INDEX		
01 00 40	1	9.00
REC MOD TR FUND		
01 30 42	1	1.50
005 STARS		
01 00 41	1	2970.00
10 CASH TOTAL 2		2980.50

To Have and to Hold, the same in fee simple forever.

And the grantor does hereby fully warrant the title to said land, and will defend the same against the lawful claims of all persons whomsoever, except: taxes for 1988 and subsequent years, zoning ordinances and other restrictions and prohibitions imposed by applicable governmental authorities, and conditions, easements, and restrictions of record, if any, with the understanding that this reference shall not operate to reimpose any of them.

IN WITNESS WHEREOF, the said grantors have hereunto set their hand and seal the day and year first above written.

Signed, sealed and delivered  
in our presence:

*James H. Dormany Jr.*  
*Edna Lee Dormany*


*James H. Dormany Jr.* (SEAL)  
JAMES H. DORMANY, JR., Individually  
and as Trustee

*Edna Lee Dormany* (SEAL)  
EDNA LEE DORMANY, Individually  
and as Trustee

STATE OF FLORIDA

COUNTY OF PASCO

The foregoing instrument was acknowledged before me this 12th day of January, 1989 by JAMES H. DORMANY, JR. and EDNA LEE DORMANY, Individually and as Trustees of the Dormany Family Revocable Trust Agreement dated June 14, 1985.

  
NOTARY PUBLIC

My Commission Expires:

NOTARY PUBLIC, STATE OF FLORIDA,  
MY COMMISSION EXPIRES: OCT. 12, 1992.  
BONDED THRU NOTARY PUBLIC UNDERWRITERS.



JAN 12 5 05 PM '89

527477

Documentary Tax Pd. \$ 8.970.00

Intangibles Tax Pd.

Jed Pillman, Clerk, Pasco County

By J. Russell Deputy ClerkBoard Records **R**

9.00

1.50

.35

11.85

QUIT CLAIM DEED

This Indenture, made this 12th day of January, 1989, between JAMES H. DORMANY, JR. and EDNA LEE DORMANY, husband and wife, individually and as trustees of the DORMANY FAMILY REVOCABLE TRUST AGREEMENT dated June 14, 1985, party of the first part, and PASCO COUNTY, a political subdivision of the State of Florida, of 705 East Live Oak Avenue, Dade City, Florida 33525, party of the second part,

WITNESSETH, that the said party of the first part, for and in consideration of the sum of Ten Dollars and other good and valuable consideration, in hand paid by the said party of the second part, the receipt whereof is hereby acknowledged, has remised, released and quitclaimed, and by these presents does remise, release and quitclaim unto the said party of the second part all the right, title, interest claim and demand which the said party of the first part has in and to the following described lot, piece or parcel of land, situate lying and being in the County of Pasco, State of Florida, to-wit:

The West 33 feet of the Southeast 1/4 of the Southwest 1/4 and the West 33 feet of the South 66 feet of the Northeast 1/4 of the Southwest 1/4 of Section 25, Township 24 South, Range 17 East, Pasco County, Florida.

Parcel Identification No. 200007 10 4087 01-12-89 2105

TO HAVE AND TO HOLD the same, together with all and singular	16:09	
the appurtenances thereunto belonging or in anywise appertaining, and all the	01 00 40	1 9.00
estate, right, title, interest and claim whatsoever of the said party of the first	01 00 42	1 1.50
part, either in law or equity, to the only proper use, benefit and behoof of	01 00 41	1 .55
the said party of the second part.		11.05

IN WITNESS WHEREOF, the said party of the first part has hereunto set his hand and seal the day and year first above written.

Signed, sealed and delivered  
in our presence:

*[Signature]*  
\_\_\_\_\_  
JAMES H. DORMANY, JR.

*[Signature]*  
JAMES H. DORMANY, JR., individually  
and as trustee

*[Signature]*  
EDNA LEE DORMANY, individually  
and as trustee



STATE OF FLORIDA  
COUNTY OF PASCO

I HEREBY CERTIFY that on this day personally appeared before me, an officer duly authorized to administer oaths and take acknowledgments, JAMES H. DORMANY, JR. and EDNA LEE DORMANY, individually and as trustees of the DORMANY FAMILY REVOCABLE TRUST AGREEMENT dated June 14, 1985, to me well known to be the persons described in and who executed the foregoing instrument and they acknowledged before me that they executed the same freely and voluntarily for the purposes therein expressed.

WITNESS my hand and official seal at New Port Richey, County of Pasco, and State of Florida, this 12th day of January, 1989.

*[Signature]*  
NOTARY PUBLIC

My Commission Expires:

NOTARY PUBLIC, STATE OF FLORIDA  
COMMISSION EXPIRES: OCT. 12, 1992  
WITNESS THIS NOTARY PUBLIC UNDERWRITING

JAN 12 5 05 PM '89

527476

Documentary Tax Pd. \$ 55  
\$            Intangible Tax Pd.  
Jed Pittman, Clerk, Pasco County  
By J. Russell Deputy Clerk

Board Records **R**

**ATTACHMENT I**

**SWFWMD Permit**