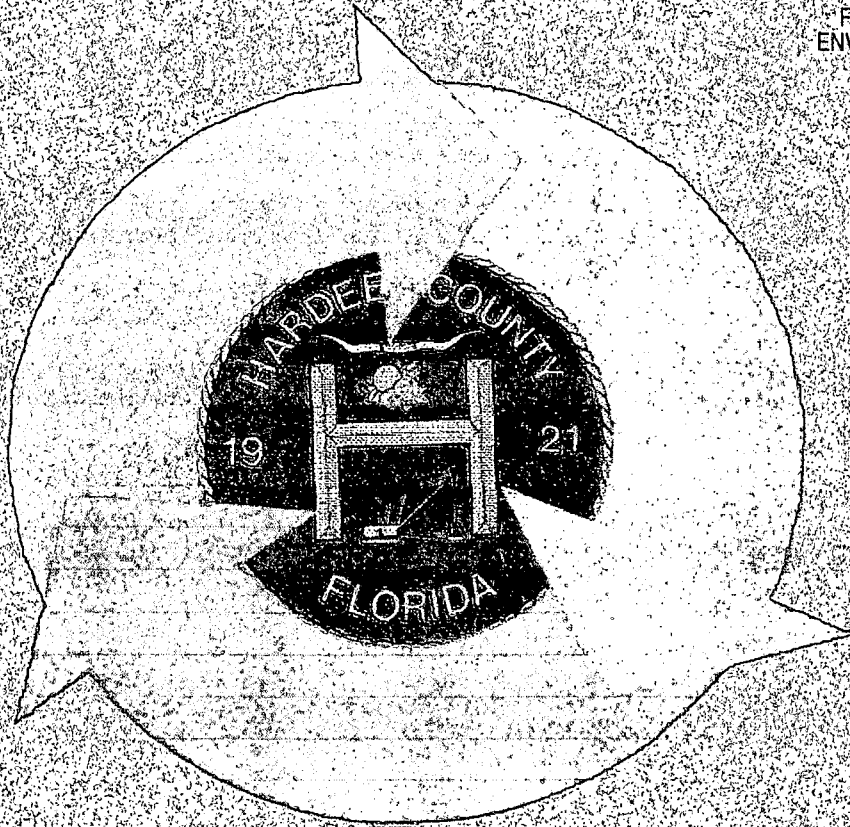


**APPLICATION FOR PERMIT RENEWAL  
FOR  
HARDEE COUNTY BOARD OF COUNTY COMMISSIONERS  
MATERIAL RECOVERY FACILITY**

FLORIDA DEPARTMENT OF  
ENVIRONMENTAL PROTECTION

APR 18 2000

SOUTHWEST DISTRICT  
TAMPA



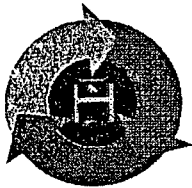
**Prepared for: State of Florida  
Department of Environmental Protections**

**Prepared by: Hardee County**

**March, 2000**

FILE

FILE



685 AIRPORT ROAD  
WAUCHULA, FL 33873-8663  
PHONE: (863) 773-5089  
FAX: (863) 773-3907

## Hardee County Solid Waste Department

RECEIVED  
JUL 13 2000  
Department of Environmental Services  
SOUTHWEST DISTRICT  
BY \_\_\_\_\_

May 17, 2000

Department of Environmental Protections  
Attention: Ms. Susan Pelz, P.E.  
Solid Waste Section  
3804 Coconut Palm Drive  
Tampa, FL 33619

RE: Response to RAI dated April 26, 2000  
Hardee County Material Recovery Facility Operations Permit  
Pending Permit No. 126620-001-SO

Dear Ms. Pelz:

In response to the above referenced, the following is submitted for your review:

1. Rule 62-701.320(8), FAC Please publish the attached Notice and provide proof of publication to the Department.

A copy of the certificate of publication for the Herald Advocate is attached.

2. Rule 62-701.700(2) and (3), FAC Please provide the following information as part of the Operations Plan. (a) A projection of waste quantities expected in future years, and the assumptions used to make those projections:

The population projections were calculated by the University of Florida and the waste projections were calculated on current percentages and pound per capita per day. Tables were submitted in the 1999-2000 annual Solid Waste Report through

Printed on Recycled Paper

## the Recycling and Education Grant Application, Part II.

(b) *A description of the loading, unloading and processing areas, specifically describing the leachate collection system:*

(c) *Provisions for leachate containment and management:*

The entire concrete building floor is sealed to facilitate maintenance and sanitation. The tipping floor and processing areas are equipped with floor drains, which drain to a pre-fab pumping station near the building. The pumping station pumps "waste" water to the leachate storage tanks at the Class I Landfill site. The floors are dry sweated daily and pressure washed once a week to minimize the production of "waste" water. "Waste" water generated in the loading dock at the rear of the facility is pumped with a 1/2 hp trash pump directly into the floor drains.

Surface water quality on the site is protected by construction of an 18,500 sq. ft retention pond and widened swells. Surface drainage from the building and surface areas are stored in these facilities per the requirements of FAC 17-25. No mixing of surface water and water used to wash the tipping floor or otherwise coming into contact with solid waste is allowed.

(d) *A plan for the disposal of unmarketable recyclables:*

Should any type of baled recyclable become "unmarketable" due to condition or lack of vendor, those bales will be disposed of in the Class I Landfill. At no time will recyclables be stored outside of the facility for a period of longer than twelve months.

(e) *A contingency plan to cover operations interruptions due to emergency conditions such as fire, explosion, etc., which impact access to the site:*

In the event, for mechanical or other reasons, the MRF has to cease operations, the scalehouse operators will direct the waste loads to the Class I Landfill for compaction and disposal by conventional landfill methods.

3. *Rules 62-701.700 (2)© and (d), FAC Please verify and complete the following table:*

See completed Table attached.

4. *Rules 62-701.700 (2) © and (d) FAC Please verify the time frame listed for baled OCC on the "Method of Storage for Recyclables" table in Appendix C. It does not appear to correlate with the narrative.*

May 17, 2000

Page 3

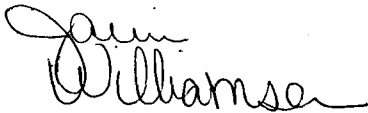
The timeframe stated in the narrative is correct. Copy of new table attached.

5. *Rule 62-701.700 (4) FAC The financial assurance cost estimates will be reviewed based on the quantities listed in the response to Comment #3, above.*

Additional information on financial assurance approval from DEP provided for general information.

This RAI has been incorporated into the Operations Plan for this facility. We hope that we have addressed all concerns adequately. However, should you need additional information, please feel free to contact us.

Sincerely,

A handwritten signature in cursive script, appearing to read "Janice Williamson".

Janice Williamson  
Solid Waste Superintendent

Attachments: Certificate of Publication  
Recycling & Education Grant Application, Part II, Tables 3 & 4  
Storage Table



Hardee County Solid Waste Department  
685 Airport Road  
Wauchula, FL 33873-8663  
(863) 773-5089 Fax (863) 773-3907

**To:** Susan Pelz **Fax:** 813-744-6125  
**From:** Janice Williamson **Date:** 7/12/00  
**Re:** Requested information **Pages:** 4  
**CC:** N/a

☐ Urgent ☒ For Review ☐ Please Comment ☐ Please Reply ☐ Please Recycle



Copy with original signature will follow via mail. Please contact me

if you need anything else.

Thanks

JW

.....



685 AIRPORT ROAD  
WAUCHULA, FL 33873-8663  
PHONE: (863) 748-2245 773-5089  
FAX: (863) 773-3907

## Hardee County Solid Waste Department

May 17, 2000

Department of Environmental Protections  
Attention: Ms. Susan Pelz, P.E.  
Solid Waste Section  
3804 Coconut Palm Drive  
Tampa, FL 33619

RE: Response to RAI dated April 26, 2000  
Hardee County Material Recovery Facility Operations Permit  
Pending Permit No. 126620-001-SO

Dear Ms. Pelz:

In response to the above referenced, the following is submitted for your review:

1. Rule 62-701.320(8), FAC Please publish the attached Notice and provide proof of publication to the Department.

A copy of the certificate of publication for the Herald Advocate is attached.

2. Rule 62-701.700(2) and (3), FAC Please provide the following information as part of the Operations Plan. (a) A projection of waste quantities expected in future years, and the assumptions used to make those projections:

The population projections were calculated by the University of Florida and the waste projections were calculated on current percentages and pound per capita per day. Tables were submitted in the 1999-2000 annual Solid Waste Report through

May 17, 2000

Page 2

## the Recycling and Education Grant Application, Part II.

*(b) A description of the loading, unloading and processing areas, specifically describing the leachate collection system:*

*(c) Provisions for leachate containment and management:*

The entire concrete building floor is sealed to facilitate maintenance and sanitation. The tipping floor and processing areas are equipped with floor drains, which drain to a pre-fab pumping station near the building. The pumping station pumps "waste" water to the leachate storage tanks at the Class I Landfill site. The floors are dry sweated daily and pressure washed once a week to minimize the production of "waste" water. "Waste" water generated in the loading dock at the rear of the facility is pumped with a ½ hp trash pump directly into the floor drains.

Surface water quality on the site is protected by construction of an 18,500 sq. ft retention pond and widened swells. Surface drainage from the building and surface areas are stored in these facilities per the requirements of FAC 17-25. No mixing of surface water and water used to wash the tipping floor or otherwise coming into contact with solid waste is allowed.

*(d) A plan for the disposal of unmarketable recyclables:*

Should any type of baled recyclable become "unmarketable" due to condition or lack of vendor, those bales will be disposed of in the Class I Landfill. At no time will recyclables be stored outside of the facility for a period of longer than twelve months.

*(e) A contingency plan to cover operations interruptions due to emergency conditions such as fire, explosion, etc., which impact access to the site:*

In the event, for mechanical or other reasons, the MRF has to cease operations, the scalehouse operators will direct the waste loads to the Class I Landfill for compaction and disposal by conventional landfill methods.

3. Rules 62-701.700 (2) © and (d). FAC Please verify and complete the following table:

See completed Table attached.

4. Rules 62-701.700 (2) © and (d) FAC Please verify the time frame listed for baled OCC on the "Method of Storage for Recyclables" table in Appendix C. It does not appear to correlate with the narrative.

May 17, 2000

Page 3

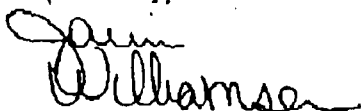
The timeframe stated in the narrative is correct. Copy of new table attached.

5. *Rule 62-701.700 (4) FAC The financial assurance cost estimates will be reviewed based on the quantities listed in the response to Comment #3, above.*

Additional Information on financial assurance approval from DEP provided for general information.

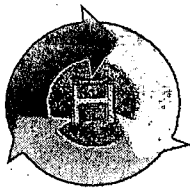
This RAI has been incorporated into the Operations Plan for this facility. We hope that we have addressed all concerns adequately. However, should you need additional information, please feel free to contact us.

Sincerely,



Janice Williamson  
Solid Waste Superintendent

Attachments: Certificate of Publication  
Recycling & Education Grant Application, Part II, Tables 3 & 4  
Storage Table



685 AIRPORT ROAD  
WAUCHULA, FL 33873-8663  
PHONE: (863) 773-5080  
FAX: (863) 773-3907

## Hardee County Solid Waste Department

May 17, 2000

Department of Environmental Protections  
Attention: Ms. Susan Pelz, P.E.  
Solid Waste Section  
3804 Coconut Palm Drive  
Tampa, FL 33619

D.E.P.  
MAY 26 2000  
Southwest District Tampa

RE: Response to RAI dated April 26, 2000  
Hardee County Material Recovery Facility Operations Permit  
Pending Permit No. 126620-001-SO

Dear Ms. Pelz:

In response to the above referenced, the following is submitted for your review:

1. Rule 62-701.320(8), FAC Please publish the attached Notice and provide proof of publication to the Department.

A copy of the certificate of publication for the Herald Advocate is attached.

2. Rule 62-701.700(2) and (3), FAC Please provide the following information as part of the Operations Plan. (a) A projection of waste quantities expected in future years, and the assumptions used to make those projections:

The population projections were calculated by the University of Florida and the waste projections were calculated on current percentages and pound per capita per day. Tables were submitted in the 1999-2000 annual Solid Waste Report through

Printed on Recycled Paper

the Recycling and Education Grant Application, Part II.

(b) *A description of the loading, unloading and processing areas, specifically describing the leachate collection system:*

(c) *Provisions for leachate containment and management:*

The entire concrete building floor is sealed to facilitate maintenance and sanitation. The tipping floor and processing areas are equipped with floor drains, which drain to a pre-fab pumping station near the building. The pumping station pumps "waste" water to the leachate storage tanks at the Class I Landfill site. The floors are dry sweated daily and pressure washed once a week to minimize the production of "waste" water. "Waste" water generated in the loading dock at the rear of the facility is pumped with a ½ hp trash pump directly into the floor drains.

Surface water quality on the site is protected by construction of an 18,500 sq. ft retention pond and widened swells. Surface drainage from the building and surface areas are stored in these facilities per the requirements of FAC 17-25. No mixing of surface water and water used to wash the tipping floor or otherwise coming into contact with solid waste is allowed.

(d) *A plan for the disposal of unmarketable recyclables:*

Should any type of baled recyclable become "unmarketable" due to condition or lack of vendor, those bales will be disposed of in the Class I Landfill. At no time will recyclables be stored outside of the facility for a period of longer than twelve months.

(e) *A contingency plan to cover operations interruptions due to emergency conditions such as fire, explosion, etc., which impact access to the site:*

In the event, for mechanical or other reasons, the MRF has to cease operations, the scalehouse operators will direct the waste loads to the Class I Landfill for compaction and disposal by conventional landfill methods.

3. Rules 62-701.700 (2)© and (d), FAC Please verify and complete the following table:

See completed Table attached.

4. Rules 62-701.700 (2) © and (d) FAC Please verify the time frame listed for baled OCC on the "Method of Storage for Recyclables" table in Appendix C. It does not appear to correlate with the narrative.

D.E.R.  
MAY 26 2000  
Southwest District Tampa



May 17, 2000

Page 3

The timeframe stated in the narrative is correct. Copy of new table attached.

5. *Rule 62-701.700 (4) FAC The financial assurance cost estimates will be reviewed based on the quantities listed in the response to Comment #3, above.*

Additional information on financial assurance approval from DEP provided for general information.

This RAI has been incorporated into the Operations Plan for this facility. We hope that we have addressed all concerns adequately. However, should you need additional information, please feel free to contact us.

Sincerely,

Janice Williamson  
Solid Waste Superintendent

Attachments: Certificate of Publication  
Recycling & Education Grant Application, Part II, Tables 3 & 4  
Storage Table

# AFFIDAVIT OF PUBLICATION

## The Herald-Advocate

Published Weekly at Wauchula, Florida

STATE OF FLORIDA,  
COUNTY OF HARDEE

Before the undersigned authority personally appeared Jim Kelly  
who on oath says he is the editor of The Herald-Advocate, a news-  
paper published at Wauchula, in Hardee County, Florida; that the attached copy of

advertisement, being a Notice  
in the matter of Hardee Co. Materials Recovery Facility

in the \_\_\_\_\_ Court, was published in said newspaper in  
the issues of May 18, 2000

Affiant further says that the said Herald-Advocate is a newspaper published  
at Wauchula, in said Hardee County, Florida, and that the said newspaper has hereto-  
fore been continuously published in said Hardee County, Florida, each week and has  
been entered as second class mail matter at the post office in Wauchula, in said Har-  
dee County, Florida, for a period of one year next preceding the publication of the  
attached copy of advertisement; and affiant further says that he has neither paid nor  
promised any person, firm or corporation any discount, rebate, commission or refund  
for the purpose of securing this advertisement for publication in the said newspaper.

Sworn to and subscribed before me this 18 day of May  
A. D. 2000

Theresa V. Cimmino

Notary Public

My Commission Expires June 15, 2002

NOTARY PUBLIC  
STATE OF FLORIDA  
Theresa V. Cimmino  
Commission # CC 739052  
Expires June 15, 2002  
BONDED THRU  
ATLANTIC BONDING CO., INC.

## NOTICE

62-110.106 (6). Public Notice of Application and Proposed Agency Action Publication of a notice of application shall be required for those project that, because of their size, potential effect on the environment or natural resources, controversial nature, or location, are reasonably expected by the Department to result in a heightened public concern or likelihood of request for administrative proceedings. If required, the notice shall be published by the applicant one time only within fourteen days after a complete application is filed and shall contain the name of the applicant, a brief description of the project and its location, the location of the application file, and the times when it is available for public inspection. The notice shall be prepared by the Department and shall comply with the following format:

State of Florida  
Department of Environmental Protection  
Notice of Application

The Department announces the receipt of an application for permit from Hardee County Board of County Commissioners, Mr. Minor Bryant, Chairman, for continued operation of a solid waste materials recovery facility, referred to as the Hardee County Materials Recovery Facility, located at the Hardee County Regional Landfill, 685 Airport Road, Wauchula, Florida.

This application is being processed and is available for public inspection during normal business hours, 8:00 a.m. to 5:00 p.m. Monday through Friday, except legal holidays, at the Department of Environmental Protection, Southwest District Office, 3804 Coconut Palm Drive, Tampa, Florida 33619-8318

TABLE 4  
MUNICIPAL SOLID WASTE TO BE  
COLLECTED AND RECYCLED

(January 1, 1999 - December 31, 1999 and January 1, 2018 - December 31, 2018)

Note: Refer to Grant Application Items 5(b) & 5(m)

OPEN DATA FILE before pushing button, do not alter any formats, do not enter information in shaded areas.

COUNTY:	Hardee		1999 POPULATION:		22,594	2018 POPULATION:		24,700
(1)	(2)	(3)	(4)	(5)	(6)	(7)	(8)	(9)
Materials	To Be Collected and Recycled Jan. 1, 1999 - Dec. 31, 1999					To Be Collected Jan. 1, 2018 - Dec. 31, 2018		
	Collected Tons(a)	Percent Total Tons(b)	Pounds per Capita per Day(c)	Recycled Tons (d)	Percent Recycled	Collected Tons(e)	Percent Total Tons(b)	Pounds per Capita per Day(f)
1. Minimum 5 Materials(g)								
a. Newspaper	332	2	0.08	33	10	363	2	0.08
b. Glass	497	3	0.12	149	30	544	3	0.12
c. Aluminum cans	332	2	0.08	199	60	363	2	0.08
d. Plastic bottles	332	2	0.08	0	0	363	2	0.08
e. Steel cans	332	2	0.08	17	5	363	2	0.08
2. Special Waste Materials(h)								
a. C&D debris	829	5	0.20	0	0	906	5	0.20
b. Yard trash	1,161	7	0.28	0	0	1,269	7	0.28
c. White goods	332	2	0.08	332	100	363	2	0.08
d. Tires	166	1	0.04	166	100	181	1	0.04
e. Process fuel(i)	NA	NA	NA		0	NA	NA	NA
3. Other Waste Materials								
a. Other plastics	332	2	0.08	0	0	363	2	0.08
b. Ferrous metals	2,487	15	0.60	2,363	95	2,719	15	0.60
c. Non-ferrous metals	332	2	0.08	282	85	363	2	0.08
d. Corrugated paper	497	3	0.12	423	85	544	3	0.12
e. Office paper	497	3	0.12	0	0	544	3	0.12
f. Other paper	1,326	8	0.32	0	0	1,450	8	0.32
g. Food	829	5	0.20	0	0	906	5	0.20
h. Textiles	497	3	0.12	0	0	544	3	0.12
i. Miscellaneous	5,471	33	1.33	0	0	5,981	33	1.33
4. County Totals	16,579	100.00	4.02	3,962	24	18,125	100.00	4.02
Must Equal Figure Reported in Table3:	16,579	Must = 100%	4.02	3,962	24	18,125	Must = 100%	4.02

(a) Collected Tons = column 2, line 4 (total tons collected) times column 3 (percent total tons) divided by 100.

(b) Percent Total Tons as reported in County's Waste Composition study. County Total must = 100%.

(c) Pounds/Capita/Day = column2 (material type tons) times 2,000 pound/ton divided by the 1999 county population divided by 365 days.

(d) Recycled Tons= column 6 (percent recycled) times column 2 (material type tons) divided by 100. No recycling rates can be greater than 100%.

(e) Collected Tons = column 7, line 4 (total tons collected) times column 8 (percent total tons) divided by 100.

(f) Pounds/Capita/Day = column7 (material type tons) times 2,000 pound/ton divided by the 2018 county population divided by 365 days.

(g) The Legislature established a goal of 50 percent for each material by the end of 1994 for each county.

(h) The total of these materials can count towards no more than one half of the 30 percent recycling goal for each county.

(i) Process fuel (yard, wood and paper waste used in process boilers) should not be included in line 4, column 2 (total county tons collected), as they are accounted for in other material categories. They should be counted in line 4, column 5 (total county tons recycled.)

**TABLE 3**  
**CURRENT AND FUTURE MSW**  
**COLLECTION AND RECYCLING BY GENERATOR TYPE**  
 (Jan. 1, 1998 - Dec. 31, 1998; Jan. 1, 1999 - Dec. 31, 1999 and Jan. 1, 2018 - Dec. 31, 2018)

Note: Refer to Grant Application Items 5(b) & 5(m)

OPEN DATA FILE before pushing button, do not alter any formats, do not enter information in shaded areas.

**SECTION A**

COUNTY: Hardee

1998 POPULATION(a): 22,801

(1) Generator Type	(2) Collected and Recycled Jan. 1, 1998 - Dec. 31, 1998				
	(3) Collected Tons(b)	(4) Percent Total Tons(c)	(5) Pounds per Capita per Day(d)	(6) Recycled Tons	(7) Percent Recycled(e)
1. Residential Single Family	10,632	64	2.56	500	5
2. Residential Multi-Family	620	4	0.15	50	8
3. Commercial	5,479	33	1.32	1,500	27
4. County Totals	16,731	100	4.02	2,050	12
Must Equal Figure Reported in Table 1:	16,731		4.02	2,050	12

NOTE: Line 4, Columns 2,4,5,6 (Generator Type County Totals) Must Equal TABLE 1, Line 4, Columns 2,4,7,8 (County Totals).

**SECTION B**

1999 POPULATION: 22,594

2018 POPULATION: 24,700

(1) Generator Type	(2) To Be Collected and Recycled Jan. 1, 1999 - Dec. 31, 1999					(3) To Be Collected Jan. 1, 2018 - Dec. 31, 2018		
	(4) Collected Tons(b)	(5) Percent Total Tons(c)	(6) Pounds per Capita per Day(d)	(7) Recycled Tons	(8) Percent Recycled(e)	(9) Collected Tons(b)	(10) Percent Total Tons(f)	(11) Pounds per Capita per Day(d)
1. Residential Single Family	10,612	64	2.57	1,592	15	11,600	64	2.57
2. Residential Multi-Family	663	4	0.16	100	15	725	4	0.16
3. Commercial	5,304	32	1.29	2,270	43	5,800	32	1.29
4. County Totals	16,579	100	4.02	3,962	24	18,125	100	4.02

(a) Official April 1, 1998 Governor's Office population estimates.

(b) Collected Tons = Tons Recycled + Tons Landfilled + Tons Combusted (Net).

(c) Percent Total Tons = column 2 (generator type tons) divided by column 2, line 4 (total county tons collected) times 100.

(d) Pounds/Capita/Day = column 2 (generator type tons) times 2,000 pound/ton divided by the appropriate county population divided by 365 days.

(e) Percent Recycled = column 5 (recycled tons) divided by column 2 (generator type tons) times 100.

(f) Percent Total Tons = column 7 (generator type tons) divided by column 7, line 4 (total county tons collected) times 100.

(g) Pounds/Capita/Day = column 7 (generator type tons) times 2,000 pound/ton divided by the 2017 county population divided by 365 days.

Material	Max. Storage Qty. (cy, tons)	Storage Method	Max. Storage Time	Storage Location
Unprocessed Waste	100 Tons	Loose	48 Hours	Tipping Floor
Processed: Clear Glass	25 cy	Roll off	2-4 Months	On pavement SW Corner
Amber Glass	25 cy	Roll off	2-4 Months	On pavement SW Corner
Commingled Aluminum and Bimetal cans	30 cy	Covered Containers	1 Week	On pavement South side
Baled Aluminum	8 Tons	Baled	4-6 Months	Inside MRF Bldg.
Baled Bimetal	8 Tons	Baled	4-6 Months	Scrap metal site
Plastics	187 cy	Loose	3-6 Months	Pavement east of Bldg.
Plastic Loose	25 tons	Baled	3-6 Month	Pavement South of Bldg.
Newsprint	19.5 cy	Loose Stacked	1-3 Months	Trailer Northeast Of Bldg.
OCC	900cy	Loose	1 week	Pavement east of Bldg.
OCC Loose	30 tons	Baled	2-3 Months	Pavement south Of bldg.



Jeb Bush  
Governor

# Department of Environmental Protection

Twin Towers Office Building  
2600 Blair Stone Road MS 4565  
Tallahassee, Florida 32399-2400

David B. Struhs  
Secretary

April 27, 2000

Mr. J. R. Prestridge, Assistant County Manager  
Hardee County  
685 Airport Road  
Wauchula, Florida 33873

RE: GMS 4025C30001 - Hardee County Regional Landfill, Hardee County, Florida

Dear Mr. Prestridge:

I reviewed the fiscal year end 1999 Independent Auditors report submitted to demonstrate financial assurance for the above referenced facility and find it is in order. The September 30, 1999, landfill management escrow account balance of \$775,451 adequately meets the funding requirements of Rule 62-701.630, Florida Administrative Code (F.A.C.). Therefore, Hardee County Regional Landfill is in compliance with the financial assurance requirements of Rule 62-701.630, F.A.C. at this time.

If you have any questions, please contact me at (850) 488-0300.

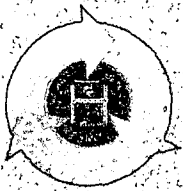
Sincerely,

Sandra M. Maddi  
Environmental Specialist  
Solid Waste Section

SMM

cc: Bob Butera, DEP/TP  
Fred Wick, DEP/TLH





685 Airport Road  
Wauchula, FL 33873  
(863) 773-5089  
Fax (863) 773-3907

## Hardee County Solid Waste Department

March 31, 2000

Department of Environmental Protections  
Attention: Susan Pelz  
3804 Coconut Palm Drive  
Tampa, FL 33619

D.E.P.

APR 18 2000

Southwest District Tampa

RE: MRF Permit Renewal, SO25-271793

Dear Ms. Pelz:

Attached for your review and approval is the renewal permit application for the operation of the Hardee County Material Recovery Facility

Please note that the general information in parts A and C has been updated. Because there have been no substantial changes in the operation of this facility or in quantity and types of materials received, parts D and S are marked "no substantial change" (except for current closure estimates). Part T has been signed by the chairman of the Hardee County Board of County Commissioners and verified by Hardee County's Engineer.

In addition, attached is our request for permit fee reduction and the reduced fee for \$100.00. Should you have any questions or request for additional information please feel free to contact me.

Sincerely,

Janice Williamson  
Solid Waste Superintendent

JW/tc

Printed on recycled paper

## **TABLE OF CONTENTS**

**Letter of Transmittal**  
**Index Page**

### **SECTION I**

**Request for permit fee reduction**

### **SECTION II**

**Application for MRF Permit Renewal**  
**(Parts A, C, D, S and T)**

### **SECTION III**

**Financial Assurance**

**Cost Closure Estimates for Class I Landfill**  
**(Including Waste Tire Site and MRF)**  
**Letter of Approval from DEP**  
**Escrow Account Bank Statement**

### **SECTION IV**

**Operational Plan:**

**Collection Process**  
**Procedures**  
**Employee Job Descriptions**  
**Equipment Vendor List**  
**Equipment List**  
**Waste Control Plan**  
**Fire Control Plan**  
**Contingency Plan**  
**Closure Plan**



# SECTION I

**HARDEE COUNTY  
BOARD OF COUNTY COMMISSIONERS  
412 West Orange Street  
Room A-203, Courthouse Annex  
Wauchula, Florida 33873-2867  
(941)773-9430 \* (941)773-6952 \* Fax (941)773-0958**

January 11, 2000

Department of Environmental Protection  
Solid Waste Section  
Attention: Bob Butera  
3804 Coconut Palm Drive  
Tampa, Florida 33619-8318

Re: Permit Fee Reduction

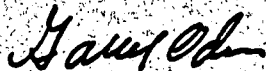
Dear Mr. Butera:

Pursuant to the Florida Law 94-278, Hardee County is requesting a permit fee reduction.

Hardee County is currently at 8.75 mills and Florida law states that millage greater than eight mills would justify a permit fee reduction or waiver to be granted on the basis of hardship. Hardee County certifies that the cost of the permit processing fee is a fiscal hardship due to the fact that ad valorem operating millage is greater than eight mills.

Attached you will find the certification of the county millage by the Hardee County Property Appraiser's Office.

Sincerely,



Gary Oden, County Manager  
Hardee County, Florida

GO/sd

permit fee reduction011100

Minor L. Bryant – Clifton N. Timmerman – Gordon R. Norris  
E. Milton Lanier – Walter B. Olliff, Jr.  
County Manager Gary Oden – Asst. Co. Manager J. R. Prestridge – County Attorney Gary A. Vorbeck

"An Equal Opportunity Employer"



1999

*Hardee County*

CAROLYN J. COKER

PROPERTY APPRAISER

## 1999 MILLAGE RATES BY TAXING AUTHORITY

TAXING AUTHORITY	MILLAGE RATE
BCC	008750
SCHOOL BOARD	
State	006391
Local	002760
Total	009151
WATER MANAGEMENT	
SFWMD	000422
Peace River Basin	000195
Total	000617
INDIGENT HEALTH CARE	000620
BOWLING GREEN	005000
WAUCHULA	005020
ZOLFO SPRINGS	009112

## TOTALS FOR PROPERTY OWNERS IN:

Unincorporated County	019138
Bowling Green	025138
Wauchula	024158
Zolfo Springs	025250



# SECTION III





**Florida Department of Environmental Protection**  
Twin Towers Office Bldg. • 2600 Blair Stone Road • Tallahassee, FL 32399-2400

DEP Form # 62-701.900(1)
Form Title: <u>Solid Waste Management Facility Permit</u>
Effective Date: <u>May 19, 1994</u>
DEP Application No. _____ (Filled by DEP)

**STATE OF FLORIDA**  
**DEPARTMENT OF ENVIRONMENTAL PROTECTION**

**SOLID WASTE MANAGEMENT FACILITY PERMIT**

**APPLICATION INSTRUCTIONS AND FORMS**

**Northwest District**  
160 Governmental Center  
Pensacola, FL 32501-5794  
850-595-8360

**Northeast District**  
7825 Baymeadows Way, Ste. B200  
Jacksonville, FL 32256-7590  
904-448-4300

**Central District**  
3319 Maguire Blvd., Ste. 232  
Orlando, FL 32803-3767  
407-894-7555

**Southwest District**  
3804 Coconut Palm Dr.  
Tampa, FL 33619  
813-744-6100

**South District**  
2295 Victoria Ave., Ste. 364  
Fort Myers, FL 33901-3881  
941-332-6975

**Southeast District**  
400 North Congress Ave.  
West Palm Beach, FL 33401  
561-681-6600

## **INSTRUCTIONS TO APPLY FOR A SOLID WASTE MANAGEMENT PERMIT**

### **I. General**

Solid Waste Management Facilities shall be permitted pursuant to Section 403.707, Florida Statutes, (FS) and in accordance with Florida Administrative Code (FAC) Chapter 62-701. A minimum of six copies of the application shall be submitted to the Department District Office having jurisdiction over the facility. The appropriate fee in accordance with Chapter 62-4, FAC, and Rule 62-701.320(5)(c), FAC, shall be submitted with the application by check made payable to the Department of Environmental Regulation (DEP).

Complete appropriate sections for the type of facility for which application is made. Entries shall be typed or printed in ink. All blanks shall be filled in or marked "not applicable" or "no substantial change". Information provided in support of the application shall be marked "submitted" and the location of this information in the application package indicated. The application shall include all information, drawings, and reports necessary to evaluate the facility. Information required to complete the application is listed on the attached pages of this form.

### **II. Application Parts Required for Construction and Operation Permits**

- A. Landfills and Ash Monofills - Submit parts A,B, D through R, and T
- B. Asbestos Monofills - Submit parts A,B,D,E,F,I,K, M through Q, and T
- C. Industrial Solid Waste Facilities - Submit parts A,B, D through Q, and T
- D. Volume Reduction Facilities - Submit parts A,C,D,S, and T
- E. Materials Recovery Facilities - Submit parts A,C,D,S, and T

**NOTE:** Portions of some parts may not be applicable.

**NOTE:** For facilities that have been satisfactorily constructed in accordance with their construction permit, the information required for A,B,C,D, and E type facilities does not have to be resubmitted for an operation permit if the information has not substantially changed during the construction period. The appropriate portion of the form should be marked "no substantial change".

### **III. Application Parts Required for Closure Permits**

- A. Landfills and Ash Monofills - Submit parts A,B, N through R, and T
- B. Asbestos Monofills - Submit parts A,B, M through Q, and T
- C. Industrial Solid Waste Facilities - Submit parts A,B, N through Q, and T
- D. Volume Reduction Facilities - Submit parts A,C,S, and T
- E. ~~Materials Recovery Facilities - Submit parts A,C,S, and T~~

**NOTE:** Portions of some parts may not be applicable.

### **IV. Permit Renewals**

The above information shall be submitted at time of permit renewal in support of the new permit. However, facility information that was submitted to the Department to support the expiring permit, and which is still valid, does not need to be re-submitted for permit renewal. Portions of the application not re-submitted shall be marked "no substantial change" on the application form.

**V. Application Codes**

S	-	Submitted
LOCATION	-	Physical location of information in application
N/A	-	Not Applicable
N/C	-	No Substantial Change

**VI. LISTING OF APPLICATION PARTS**

PART A-	GENERAL INFORMATION
PART B-	DISPOSAL FACILITY GENERAL INFORMATION
PART C-	MATERIALS RECOVERY / VOLUME REDUCTION FACILITY GENERAL INFORMATION
PART D-	SOLID WASTE MANAGEMENT FACILITY PERMIT GENERAL REQUIREMENTS
PART E-	LANDFILL PERMIT GENERAL REQUIREMENTS
PART F-	GENERAL CRITERIA FOR LANDFILLS
PART G-	LANDFILL CONSTRUCTION REQUIREMENTS
PART H-	HYDROGEOLOGICAL INVESTIGATION REQUIREMENTS
PART I-	GEOTECHNICAL INVESTIGATION REQUIREMENTS
PART J-	VERTICAL EXPANSION OF LANDFILLS
PART K-	LANDFILL OPERATION REQUIREMENTS
PART L-	WATER QUALITY AND LEACHATE MONITORING REQUIREMENTS
PART M-	SPECIAL WASTE HANDLING REQUIREMENTS
PART N-	LANDFILL CLOSURE REQUIREMENTS
PART O-	CLOSURE PROCEDURES
PART P-	LONG TERM CARE REQUIREMENTS
PART Q-	FINANCIAL RESPONSIBILITY REQUIREMENTS
PART R-	CLOSURE OF EXISTING LANDFILL REQUIREMENTS
PART S-	MATERIALS RECOVERY FACILITY REQUIREMENTS
PART T-	CERTIFICATION BY APPLICANT AND ENGINEER OR PUBLIC OFFICER

STATE OF FLORIDA  
DEPARTMENT OF ENVIRONMENTAL PROTECTION  
APPLICATION FOR PERMIT TO CONSTRUCT, OPERATE, MODIFY OR CLOSE  
A SOLID WASTE MANAGEMENT FACILITY

Please Type or Print

**A. GENERAL INFORMATION**

1. Type of facility:

Disposal ☒

Class I Landfill	<input checked="" type="checkbox"/>	Ash Monofill	<input type="checkbox"/>
Class II Landfill	<input type="checkbox"/>	Asbestos Monofill	<input type="checkbox"/>
Class III Landfill	<input type="checkbox"/>	Industrial Solid Waste	<input type="checkbox"/>
Other	<input type="checkbox"/>		

Volume Reduction ☒

Incinerator	<input type="checkbox"/>	Pulverizer / Shredder	<input type="checkbox"/>
Composting	<input type="checkbox"/>	Compactor / Baling Plant	<input checked="" type="checkbox"/>
Materials Recovery	<input checked="" type="checkbox"/>	Energy Recovery	<input type="checkbox"/>
Other	<input type="checkbox"/>		

2. Type of application:

Construction	<input type="checkbox"/>	Construction/Operation	<input type="checkbox"/>
Operation	<input checked="" type="checkbox"/>	Closure	<input type="checkbox"/>

3. Classification of application:

New	<input type="checkbox"/>	Substantial Modification	<input type="checkbox"/>
Renewal	<input checked="" type="checkbox"/>	Minor Modification	<input type="checkbox"/>

4. Facility name: Hardee County Material Recovery Facility

5. DEP ID number: S025-271793 County: Hardee

6. Facility location (main entrance): 685 Airport Road, Wauchula, FL 33873

7. Location coordinates:

Section: 35 Township: 33S Range: 25E

UTMs: Zone            km E            km N

Latitude: 27 ° 34 ' 00 " Longitude: 81 ° 46 ' 50 "



8. Applicant name (operating authority): Hardee County Board of County Commissioners  
Mailing address: 412 West Orange Street, Room A-204, Wauchula, FL 33873  
Street or P.O. Box City State Zip  
Contact person: Janice Williamson Telephone: (863) 773-5089  
Title: Solid Waste Superintendent
9. Authorized agent/Consultant: SCS Engineering  
Mailing address: 3012 U.S. Hwy. 301 N., Suite 700, Tampa, FL 33619  
Street or P.O. Box City State Zip  
Contact person: Ray Dever Telephone: (813) 621-0080  
Title: P.E., Vice President
10. Landowner (if different than applicant): Same as Applicant  
Mailing address: Same as Applicant  
Street or P.O. Box City State Zip  
Contact person: Same as Applicant Telephone: ( ) Same
11. Cities, towns and areas to be served: City of Wauchula, City of Bowling Green,  
Town of Zolfo Springs, Unincorporated areas of Hardee County
12. Population to be served:  
Current: 22,594 Five-Year Projection: 23,500
13. Volume of solid waste to be received: 57.35 ~~xxx/xxx~~ tons/day ~~xxxxxxx~~
14. Date site will be ready to be inspected for completion: 12/7/91
15. Estimated life of facility: 20 years
16. Estimated costs:  
Total Construction: \$ 625,000 Closing Costs: \$ 7,040
17. Anticipated construction starting and completion dates:  
From: n/a To: 12/7/91

C. MATERIALS RECOVERY / VOLUME REDUCTION FACILITY GENERAL INFORMATION

1. Provide brief description of materials recovery / volume reduction facility design and operations planned by this application:

No substantial change

2. Facility site supervisor: Janice Williamson  
Title: S.W. Superintendent Telephone: (863) 773-5089
3. Disposal area: Total 12 acres; Used 7.5 acres; Available 4.5 acres
4. Security to prevent unauthorized use: Yes ☒ No ☐
5. Site located in: Floodplain ☐ Wetlands ☐ Other ☒ N/A
6. Days of operation: Monday - Saturday (6 days per week)
7. Hours of operation: 7:30 a.m. - 5:15 p.m.
8. Number of operating staff: 4 staff (1 correction officer and 5 inmates from state)
9. Expected useful life: 20 Years
10. Weighing scales used: Yes ☒ No ☐
11. Normal processing rate:        yd<sup>3</sup>/day 55 tons/day        gal/day
12. Maximum processing rate:        yd<sup>3</sup>/day 100 tons/day        gal/day
13. Charge for waste received: 32.00 per ton
14. Type of facility (check one or more):

Incinerator	<input type="checkbox"/>	Composting	<input type="checkbox"/>
Pulverizer / shredder	<input type="checkbox"/>	Materials recovery	<input checked="" type="checkbox"/>
Compactor / baling	<input checked="" type="checkbox"/>	Energy recovery	<input type="checkbox"/>
Sludge concentration	<input type="checkbox"/>	Pyrolysis	<input type="checkbox"/>
Other	<input type="checkbox"/>		

15. Material recovered, tons/week:

<u>4.5</u> Paper	<u>.5</u> Glass
<u>4.4</u> Ferrous metals	<u>1.0</u> Non-ferrous metals
<u>.1</u> Aluminum	<u>0.0</u> Plastics
<u>.1</u> Other:	



16. Energy recovery, in units shown: N/A

\_\_\_\_\_ High pressure steam, lb/hr  
\_\_\_\_\_ Low pressure steam, lb/hr  
\_\_\_\_\_ Electricity, kw/hr  
\_\_\_\_\_ Gas, ft<sup>3</sup>/hr  
\_\_\_\_\_ Other: \_\_\_\_\_

\_\_\_\_\_ Chilled water, gal/hr  
\_\_\_\_\_ Oil, gal/hr  
\_\_\_\_\_ Oil, BTU/hr  
\_\_\_\_\_ Gas, BTU/hr

17. Process water management:

Recycled: Yes ☒ No ☐

Treatment method used: Waste Water Treatment Plant

Discharged to: Surface waters ☐ Underground ☐ Other ☒

Name and Class of receiving water: Leacahte Collection Tanks

18. Storm Water:

Collected: Yes ☒ No ☐ Type of treatment: Retention Pond

Name and Class of receiving water: N/A

19. ERP Permit number or status: 407767.01 SWFWMD Permit

20. Final residue produced:

73 % of normal processing rate

70 % of maximum processing rate

Disposed of at (Site name): Hardee County Sanitary Landfill

21. Supplemental fuel used: N/A

Type: \_\_\_\_\_ Quantity used/hour: \_\_\_\_\_

22. Costs:

Estimated operating costs (material-energy revenue): \$ \_\_\_\_\_

Total cost/ton: \$ \_\_\_\_\_ Net cost/ton: \$ \_\_\_\_\_

23. State pollution control bond financing amount: \$ 0

24. Estimated amount of tax exemptions that will be requested: \$ 0

**D. SOLID WASTE MANAGEMENT FACILITY PERMIT GENERAL REQUIREMENTS (62-701.320, FAC)**

<u>S</u>	<u>LOCATION</u>	<u>N/A</u>	<u>N/C</u>	
<u>XX</u>	<u>Section II</u>	<u>    </u>	<u>    </u>	1. Six copies, at minimum, of the completed application form, all supporting data and reports; (62-701.320(5)(a), FAC)
<u>XX</u>	<u>Section II</u>	<u>    </u>	<u>    </u>	2. Engineering and/or professional certification (signature, date and seal) provided on the applications and all engineering plans, reports and supporting information for the application; (62-701.320(6), FAC)
<u>XX</u>	<u>Inside Cover</u>	<u>    </u>	<u>    </u>	3. A letter of transmittal to the Department; (62-701.320(7)(a), FAC)
<u>XX</u>	<u>Section II</u>	<u>    </u>	<u>    </u>	4. A completed application form dated and signed by the applicant; (62-701.320(7)(b), FAC)
<u>XX</u>	<u>Section I</u>	<u>    </u>	<u>    </u>	5. Permit fee specified in Rule 62-4.050, FAC and Rule 62-701.320(5)(c), FAC in check or money order, payable to the Department; (62-701.320(7)(c), FAC)
<u>XX</u>	<u>Section IV</u>	<u>    </u>	<u>    </u>	6. An engineering report addressing the requirements of this rule and with the following format: a cover sheet, text printed on 8 1/2 inch by 11 inch consecutively numbered pages, a table of contents or index, the body of the report and all appendices including an operation plan, contingency plan, illustrative charts and graphs, records or logs of tests and investigations, engineering calculations; (62-701.320(7)(d), FAC)
<u>XX</u>	<u>Section IV</u>	<u>    </u>	<u>    </u>	7. Operation Plan; (62-701.320(7)(e)1, FAC)
<u>XX</u>	<u>Section IV</u>	<u>    </u>	<u>    </u>	8. Contingency Plan; (62-701.320(7)(e)2, FAC)
<u>    </u>	<u>    </u>	<u>    </u>	<u>XX</u>	9. Plans or drawings for the solid waste management facilities in appropriate format (including sheet size restrictions, cover sheet, legends, north arrow, horizontal and vertical scales, elevations referenced to NGVD) showing; (62-702.320(7)(f), FAC)
<u>    </u>	<u>    </u>	<u>    </u>	<u>XX</u>	a. A regional map or plan with the project location;
<u>    </u>	<u>    </u>	<u>    </u>	<u>XX</u>	b. A vicinity map or aerial photograph no more than 1 year old;
<u>    </u>	<u>    </u>	<u>    </u>	<u>XX</u>	c. A site plan showing all property boundaries certified by a registered Florida land surveyor;

<u>S</u>	<u>LOCATION</u>	<u>N/A</u>	<u>N/C</u>	
_____	_____	_____	<u>XX</u>	d. Other necessary details to support the engineering report.
_____	_____	_____	<u>XX</u>	10. Proof of property ownership or a copy of appropriate agreements between the facility operator and property owner authorizing use of property; (62-701.320(7)(g), FAC)
<u>XX</u>	<u>Section IV</u>	_____	_____	11. For facilities owned or operated by a county, provide a description of how, if any, the facilities covered in this application will contribute to the county's achievement of recycling goals contained in Section 403.706, FS; (62-701.320(7)(h), FAC)
_____	_____	_____	<u>XX</u>	12. Provide a history and description of any enforcement actions taken by the Department against the applicant for violations of applicable statutes, rules, orders or permit conditions relating to the operation of any solid waste management facility in this state; (62-701.320(7)(i), FAC)
_____	_____	<u>XX</u>	_____	13. Proof of publication in a newspaper of general circulation of notice of application for a permit to construct or substantially modify a solid waste management facility; (62-702.320(8), FAC)
_____	_____	<u>XX</u>	_____	14. Provide a description of how the requirements for airport safety will be achieved including proof of required notices if applicable; (62-701.320(12), FAC)

**R. CLOSURE OF EXISTING LANDFILLS (62-701.640, FAC)**

<u>S</u>	<u>LOCATION</u>	<u>N/A</u>	<u>N/C</u>	
				1. Demonstration that facility does not pose a bird hazard to aircraft as specified in Rule 62-701.320(12)(b), FAC.
				2. Demonstration that facility does not restrict the flow of the 100-year flood, reduce water storage capacity or result in wash-out of solid waste as specified in Rule 62-701.340(4)(b), FAC.
				3. Demonstration that facility is not located in a fault area, seismic zone or unstable area as specified in Rule 62-701.410(2)(c), FAC.
				4. Request for extension of closure criteria as specified in Rule 62-701.640(2)(a) & (2)(b), FAC.
				a. Demonstration of no alternative disposal capacity.
				b. Demonstration of no threat to human health or the environment.

**S. MATERIALS RECOVERY FACILITY REQUIREMENTS (62-701.700, FAC)**

<u>XX</u>	<u>Section 1.1.1</u>			1. Demonstration of financial assurance to cover closing costs, if required; (62-701.700(4), FAC)
			<u>XX</u>	2. Materials recovery facility requirements; (62-701.700, FAC)
			<u>XX</u>	a. Submit information required in Rule 62-701.320, FAC
			<u>XX</u>	b. Submit an engineering report including the following:
			<u>XX</u>	(1) Description of the solid waste proposed to be collected, stored, processed or disposed;
			<u>XX</u>	(2) Projection with assumptions for waste types and quantities expected in future years;



<u>S</u>	<u>LOCATION</u>	<u>N/A</u>	<u>N/C</u>
----------	-----------------	------------	------------

			XX
--	--	--	----

(3) Description of operation and functions of all processing equipment with design criteria and expected performance;

			XX
--	--	--	----

(4) Description of flow of solid waste, expected regular facility operations, procedures for start up and shut down, potential safety hazards and control methods including fire protection;

			XX
--	--	--	----

(5) Description of loading, unloading, and processing areas;

			XX
--	--	--	----

(6) Identification and capacity of temporary on-site storage areas for materials handled and provisions for solid waste and leachate containment;

			XX
--	--	--	----

(7) Identification of potential ground water and surface water contamination;

			XX
--	--	--	----

(8) Plan for disposal of unmarketable recyclables and residue and contingencies for waste handling during breakdowns.

c. Submit the following operational information:

XX	Section IV		
----	------------	--	--

(1) Operation and maintenance manual;

XX	Section IV		
----	------------	--	--

(2) Waste control plan to manage unauthorized wastes;

XX	Section IV		
----	------------	--	--

(3) Contingency plan for emergencies;

XX	Section IV		
----	------------	--	--

(4) Closure plan including the following:

XX	Section IV		
----	------------	--	--

(a) Notification to Department 180 days prior to closure;

XX	Section IV		
----	------------	--	--

(b) Procedures for removal of all waste within 30 days of receipt of final waste;

XX	Section IV		
----	------------	--	--

(c) Completion of closure activities within 180 days of receipt of final waste and notification to the Department that closure is complete.

**T. CERTIFICATION BY APPLICANT AND ENGINEER OR PUBLIC OFFICER**

**A. Applicant**

The undersigned applicant or authorized representative of Hardee County is aware that statements made in this form and attached information are an application for a Permit Renewal S025-271793 Permit from the Florida Department of Environmental Regulation and certifies that the information in this application is true, correct and complete to the best of his knowledge and belief. Further, the undersigned agrees to comply with the provisions of Chapter 403, Florida Statutes, and all rules and regulations of the Department. It is understood that the Permit is not transferable, and the Department will be notified prior to the sale or legal transfer of the permitted facility.

Minor I. Bryant  
Signature of Applicant or Agent

Minor Bryant Chairman of the BOCC  
Name and Title

Date: 04/12/00

Attach letter of authorization if agent is not a governmental official, owner, or corporate officer.

**B. Professional Engineer Registered in Florida or Public Officer as required in Section 403.707 and 403.707(5), Florida Statutes.**

This is to certify that the engineering features of this solid waste management facility have been designed/examined by me and found to conform to engineering principals applicable to such facilities. In my professional judgement, this facility, when properly maintained and operated, will comply with all applicable statutes of the State of Florida and rules of the Department. It is agreed that the undersigned will provide the applicant with a set of instructions of proper maintenance and operation of the facility.

Bryan Hunter  
Signature

110 S. 9<sup>TH</sup> Avenue  
Mailing Address

BRYAN HUNTER - COUNTY ENGINEER  
Name and Title (please type)

Wauchula FL 33873  
City, State, Zip Code

53168  
Florida Registration Number  
(please affix seal)

(863) 767-1964  
Telephone Number

Date: 3/15/00



# SECTION III

**STATE OF FLORIDA  
DEPARTMENT OF ENVIRONMENTAL PROTECTION**

**FINANCIAL ASSURANCE COST ESTIMATES**

Date: November 23, 1999

Date of FDEP Approval: \_\_\_\_\_

**I. GENERAL INFORMATION:**

Facility Name: Hardee County Regional Landfill      GMS No.: \_\_\_\_\_  
Permit No.: 38414-002-SO      Expiration Date: 6/10/2002  
Address (facility): 685 Airport Road, Wauchula, FL 33873  
Address (mailing): Same as facility  
Permittee (operating authority): Hardee County

Facility      Lat. 81°47'1"      Long. 27°34'10"      or UTM's \_\_\_\_\_  
Description of the Solid Waste Disposal Units included: Class I landfill (balefill)

Landfill Acreage included in this Estimate: 13  
Date Disposal Unit began Accepting Waste \_\_\_\_\_ Design Life of Disposal Unit: (remaining) 5 years  
Type of Landfill: X Class I      \_\_\_\_\_ Class III (C&DD)  
Exempt; Type of Exemption: \_\_\_\_\_  
Closure Plan Approved ☒ Yes / ☐ No

**II. TYPE OF FINANCIAL DOCUMENT SUBMITTED TO ENSURE FINANCIAL ASSURANCE:**

\_\_\_\_\_ Trust Fund Agreement      \_\_\_\_\_ Performance Bond (only for landfills with an approved closure plan)  
\_\_\_\_\_ Letter of Credit      \_\_\_\_\_ Standby Trust Fund Agreement  
\_\_\_\_\_ Insurance Certificate      X Escrow Account  
\_\_\_\_\_ Financial Guarantee Bond      \_\_\_\_\_ Other (Explain)

### III. ESTIMATED CLOSING COST

For the time period in the landfill operation when the extent and manner of its operation makes closing most expensive.

**\*\*Third Party Estimate/Quote must be provided for each item.**

**\*\*Costs must be for a third party providing all material and labor.**

**\*\*All totals rounded to nearest \$1,000.**

All items must be addressed. Attach a detailed explanation for all items marked no applicable (N/A).

DESCRIPTION	UNIT	QUANTITY	UNIT COST	TOTAL**
1. Monitoring Wells:				
Borehole Excavation	CY	0	0	0
Backfill	CY	0	0	0
Gravel Pack	CY	0	0	0
Casing	LF	0	0	0
Screen	EA	0	0	0
Cap	EA	0	0	0
			Subtotal Monitor Wells	0
2. Slope and Fill:				
Excavation	CY	0	0	0
Placement/Spreading	CY	21,000	4.16	87,000
Compaction	CY	21,000	0.38	8,000
Off Site Material	CY	0	0	0
			Subtotal Slope and Fill	95,000
3. Cover Material (Barrier Layer)				
Off-Site Clay	CY	0	0	0
On-Site Clay	CY	0	0	0
Synthetics - 40 mil	SF	566,500	0.43	246,000
Synthetics - 30 mil	SY	0	0	0
Synthetics - GCL	SY	0	0	0
			Subtotal Cover Material	246,000

DESCRIPTION	UNIT	QUANTITY	UNIT COST	TOTAL **
<b>4. Top Soil Cover</b>				
On-Site Material	CY	0	0.00	0
Off-site Material	CY	42,000	3	107,000
Delivery	CY		0	0
Spreading	CY	42,000	1.63	68,000
Compaction	CY		0	0
			Subtotal Top Soil Cover	<u>175,000</u>
<b>5. Stormwater Control:</b>				
Excavation, Grading & Recontouring	CY	1,000	1.63	2,000
Stormwater Sideslope Conveyances	LS	1	16,235	16,000
Ditch Construction	LS	1	10,823	11,000
Berm Construction	CY	1,000	1.63	2,000
				<u>31,000</u>
<b>6. Gas Migration Control:</b>				
Wells	EA	8	2,720	22,000
Pipe and Fittings	LF	7,757	8.24	64,000
Traps	EA	0	0	0
Sump	EA	0	0	0
Flare Assembly	EA	0	0	0
Flame Arrestor	EA	0	0	0
Mist Eliminator	EA	0	0	0
Flow Meter	EA	0	0	0
Blowers	EA	0	0	0
Monitoring Probes	LF	0	0	0
			Subtotal Gas Migration Control	<u>86,000</u>



DESCRIPTION	UNIT	QUANTITY	UNIT COST	TOTAL**
<b>7. Revegetation:</b>				
Sodding	SY	62,900	1.79	112,000
Soil Preparation/Grading	SY	0	0	0
Hydroseeding	AC	0	0	0
Fertilizer	AC	0	0	0
Mulch	AC	0	0	0
			Subtotal Revegetation	<u>112,000</u>
<b>8. Landscape Irrigation System:</b>		(None Anticipated)		
Pipe and Fittings	LF	0	0	0
Pumps	EA	0	0	0
			Subtotal Landscape Irrigation System	<u>0</u>
<b>9. Security System:</b>				
Fencing	LF	0	0	0
Gate(s)	EA	0	0	0
Sign(s)	EA	0	0	0
				<u>0</u>
<b>10. Engineering:</b>				
Closure Plan Report	LS	(Included in Permit)	0	0
Certified Engineering Drawings for construction	LS	1	59,528	60,000
Closure Permit	LS	1	129,880	130,000
Other (Detail):			0	0
			0	0
			Subtotal Engineering	<u>190,000</u>
<b>11. Benchmark Installation: (existing)</b>	EA	(Benchmarks Currently Exist)		0
Benchmark Survey	LS	1	1,082	1,000
			Subtotal Benchmark Installation	<u>1,000</u>
<b>12. Certification of Closure</b>	LS	1	10,827	11,000
			Subtotal Certification of Closure	<u>11,000</u>

DESCRIPTION	UNIT	QUANTITY	UNIT COST	TOTAL**
-------------	------	----------	-----------	---------

**13. Administrative:**

P.E. Supervisor	HR	40	130	5,000
On-Site Engineer	HR	520	81	42,000
Office Engineer	HR	80	70.41	6,000
On-Site Technician	HR	0	0	0
Other - (explain):	HR		0	0
<u>Miscellaneous Expenses (5%)</u>	LS	1	2,653	5,000

Subtotal Administration 58,000

**14. Quality Assurance**

P.E. Supervisor	HR	20	130	3,000
On-Site Engineer	HR	260	70.41	18,000
Office Engineer	HR	40	70.41	3,000
On-Site Technician	HR	0	0	0
QA Testing	LS	0	0	0
Other (explain):				
<u>Miscellaneous Expenses (5%)</u>	LS	1	1,185	1,000

Subtotal Quality Assurance 25,000

**15. Site Specific Costs (explain):**

<u>Waste Tire Facility and MRF Closure</u>	7,041
<u>Access Ramp (6" of stabilized soil)</u>	14,607

Subtotal Site Specific Costs 22,000



DESCRIPTION	UNIT	QUANTITY	UNIT COST	TOTAL**
-------------	------	----------	-----------	---------

Subtotal Cost 1,052,000

16. Contingency 15% of Total

158,000

TOTAL CLOSING COSTS 1,210,000

#### CERTIFICATION BY ENGINEER

This is to certify that the Financial Assurance Cost Estimates pertaining to the engineering features of this solid waste management facility have been examined by me and found to conform to engineering principals applicable to such facilities. In my professional judgement, the Cost Estimates are a true, correct and complete representation of the financial liabilities for closing and long-term care of the facility, and comply with the requirements of Florida Administrative Code (FAC), Rule 62-701.630 and all other Department of Environmental Protection rules, and statutes of the State of Florida. It is understood that the Financial Assurance Cost Estimates shall be revised and submitted to the Department annually as required by FAC 62-701.630(4).

Raymond J. Dever  
Signature

Raymond J. Dever, P.E., Vice President  
Name and Title (please type)

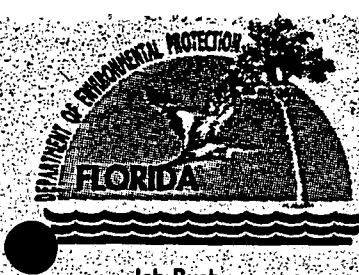
43031  
Florida Registration Number (please affix seal)

SCS Engineers, 3012 U.S. Hwy 301 N., Ste. 700  
Mailing Address

Tampa, FL 33619  
City, State, Zip Code

(813) 621-0080  
Telephone Number

Date: November 23, 1999



# Department of Environmental Protection

Jeb Bush  
Governor

Southwest District  
3804 Coconut Palm Drive  
Tampa, Florida 33619

David B. Struhs  
Secretary

Ms. Janice Williamson, Director  
Hardee County Solid Waste Department  
685 Airport Road  
Wauchula, FL 33873

February 1, 2000

RE: Hardee County Landfill Financial Assurance Cost Estimates  
Permit No.: 38414-002-SO, Class I Landfill  
129318-001-WT, WTPF  
SO25-271793, MRF

Dear Ms. Williamson:

This letter is to acknowledge receipt of the inflation-adjusted cost estimates dated January 6, 2000 (received January 10, 2000), prepared by SCS Engineers, for closing and long-term care for the Hardee County Landfill and related facilities. The following cost estimates, received January 10, 2000, are **APPROVED** for 1999:

Closing: \$1,257,100 (includes \$7,041 for WTPF and MRF)  
Long Term Care: \$50,700/year x 30 years=\$1,521,000 total

The next annual update (revised or inflation-adjusted estimates) is due no later than September 1, 2000.

A copy of these estimates will be forwarded to Mr. Fred Wick, Solid Waste Section, FDEP, 2600 Blair Stone Road, Tallahassee, Florida 32399-2407. Please work with him directly to assess the facility's compliance with the funding mechanism requirements of Rule 62-701.630, F.A.C. If you have any questions, you may contact me at (813) 744-6100 ext. 386.

Sincerely,

Susan J. Pelz, P.E.  
Solid Waste Section  
Southwest District

sjp

cc: Ray Dever, P.E., SCS Engineers, 3012 US Hwy 301 North, Ste. #700, Tampa, FL 33619  
Fred Wick, FDEP, Tallahassee, w/attachment  
Robert Butera, P.E., FDEP Tampa

"More Protection, Less Process"

Printed on recycled paper.



**WAUCHULA STATE BANK**  
**P. O. BOX 248**  
**WAUCHULA, FLORIDA 33873**

# Statement of Account

Last statement: September 30, 1999

This statement: October 29, 1999

1 101 019 0000032036 Page 1 of 1

Direct inquiries to:  
 Bankline 24 (800)407-6782  
 Bank (941)773-4151

HARDEE COUNTY BOARD OF COUNTY COMMISSION  
 SOLID WASTE CLOSURE ACCOUNT  
 HOLD  
 PER CUSTOMER REQUEST

WAUCHULA STATE BANK  
 P. O. BOX 248  
 WAUCHULA, FLORIDA 33873

0

## Summary of Account Balance

Account	Number	Ending Balance
NOW Account	0000032036	\$775,221.85

\*\* Call for statement \*\*

## NOW Account

Account number  
 0000032036

Tax ID Number  
 59-6000632

Beginning balance	\$775,451.34		
Total interest year to date	\$9,544.10		
Total additions	\$770.51	Total subtractions	.00

Date	Description	Additions	Subtractions
10-29	#Interest	770.51	

### Daily balances

Date	Amount	Date	Amount	Date	Amount
09-30	775,451.34	10-29	776,221.85		



# SECTION IV

**HARDEE COUNTY SOLID WASTE  
DEPARTMENT**

**MATERIAL RECOVERY FACILITY**

# **OPERATIONAL PLAN**



# **CONTINGENCY PLAN**

**Prepared by: Hardee County Solid Waste Department  
Updated March, 2000**

# **INDEX**

## **OPERATION PLAN**

<b>COLLECTION PROCESS</b>	<b>PAGE 3</b>
<b>PROCEDURES</b>	<b>PAGE 3</b>
<b>EMPLOYEES JOB DESCRIPTIONS</b>	<b>PAGE 5</b>
<b>EQUIPMENT VENDORS LIST</b>	<b>PAGE 8</b>
<b>EQUIPMENT LIST</b>	<b>PAGE 9</b>
<b>WASTE CONTROL PLAN</b>	<b>PAGE 10</b>
<b>FIRE CONTROL PLAN</b>	<b>PAGE 10</b>
<b>CONTINGENCY</b>	<b>PAGE 10</b>
<b>CLOSURE PLAN</b>	<b>PAGE 11</b>

**Appendix A:**  
    **Equipment Manuals**

**Appendix B:**  
    **Fire Escape Plan**

**Appendix C:**  
    **Recycling Brochure**  
    **Storage Chart**



## **COLLECTION PROCESS FOR RECYCLABLES**

Hardee County operates a Material Recovery Facility, which serves a number of purposes for the Solid Waste Department. This facility allows the Solid Waste Department to provide the county with a waste reduction/recycling method for the Class I Landfill by segregating the recyclables from the non-recyclable waste and by baling non-recyclable waste and reducing the space needed in the Class I Landfill. It also provides the Department with a very effective waste screening process.

Residents of Hardee County are asked to place their commingled recyclables into a clear or transparent bag. If they have garbage pick-up, they are asked to place their recyclables on the curb with their other garbage or they may bring it to the Hardee County Landfill. An educational brochure explaining the procedures to follow is included in Appendix C.

## **PROCEDURES**

Upon entering the landfill, each load of solid waste is required to register at the scale house. The vehicle is weighed and classified in one of the following categories:

- 1 Residential
- 2 Commercial
- 3 Wood and Yard Trash
- 4 Institutional
- 5 Construction/Demolition Debris
- 6 Scrap Metal
- 7 Special Handling
- 8 Asbestos
- 9 Contaminated Soil
- 10 Tires

After Classification, the loads are assigned to one of the following sites:

- 1 Class I Landfill
- 2 Wood and Yard Trash Site
- 3 Scrap Metal Site
- 4 Waste Tire Site
- 5 Material Recovery Facility

Loads that are directed to the Material Recovery Facility for processing are backed into the building through two of eight roll-up doors. They empty their loads onto the tipping floor of the facility. Inmates from Hardee Correctional Institute (the local state prison), are instructed to pull and segregate all accessible OCC from the tipping floor. A bobcat loader is used to push the

garbage onto a steel belt conveyor, which transports the material up to a 5' X 40' elevated sorting belt. The inmates are stationed at each side of the sorting belt and instructed to pull the recyclable materials, paying special attention to the clear or transparent bags, which may contain all recyclable material. The inmates will rig the bags open by hand or by using a knife. The recyclable is dropped down the appropriate chute where it is deposited into the appropriate container, metal dump carts for glass, plastic storage bins for cans. Excessively dirty and/or contaminated recyclables, non-recyclables, plastic bags and other waste continue down the belt and into the baler where it is baled and then transported to the Class I Landfill/Bale-fill.

Glass is sorted by color: clear and amber. Using a forklift, the dump carts are tipped into one of two, 25 cubic yard roll-off dumpsters, (provided by the vendor) which are located on the pavement, on the south west corner of the facility. The color-separated glass is stored until sufficient quantities accumulate, which is normally two to three months storage time. Then the vendor is contacted and will bring a replacement dumpster at the time of pick-up.

Commingled aluminum and bi-metal cans are sent through a magnetic can separator and re-deposited into plastic bins with covers and stored outside. The storage bins are brought back into the facility once a week and dumped onto the tipping floor. The cans make a second trip cross the belt to double check proper separation and to remove any contaminants that may have been missed. Once the aluminum has been sorted and baled, it is stored inside the facility until sufficient quantities accumulate for marketing, which varies from four to six months. Baled bi-metal cans are transported to the scrap metal site, to be sold as such. They may be stored in the metal site for three to six months.

*Plastics (1 and 2) are not currently being recycled due to marketing problems.*

Plastics are commingled and stored in an outside storage area, located on the southwest corner of the pavement of the facility. Once a week, a bobcat loader transports the material back onto the tipping floor where it once again goes down the belt to double check for unacceptable materials, then it is baled. Bales will be stored on the south pavement outside the facility until sufficient quantities accumulate for market.

Newsprint is accepted only if it is brought into the landfill already separated from other garbage. Markets require that it be clean and dry. It is store in a box trailer provided by the vendor. The trailer is located at the north east corner of the recycling facility and is stored approximately one to three months until the trailer is full.

Loose OCC is stored in a secure, fenced area connected to the east door of the MRF. Once a week it is pushed by the bobcat back onto the tipping floor and onto the belt where it is sorted once again and then baled. Bales are stored on the south pavement outside the facility until sufficient quantities accumulate for market. Sufficient quantities usually require an average of thirty bales; this takes approximately two to three months.

There is a chart located in Appendix C that summarizes the storage methods and storage time.

## **EMPLOYEES JOB DESCRIPTIONS**

All employees work under the direct supervision of the Solid Waste Superintendent. Employees include the Executive Secretary, Resource Recovery Crew Leader, and three Resource Recovery Operators. In addition, the county contracts with Hardee Correctional Institution to provide one trained corrections officer and a five to six inmate labor crew. A copy of this agreement is included in Appendix D.

The following are job descriptions for the above mentioned employees:

### **Executive Secretary**

#### **Major Functions:**

This is skilled clerical work, with administrative responsibility, under the direction of the Solid Waste Superintendent. A technical position responsible for implementing the County Recycling Program and assisting the S.W. Superintendent in the administration of the County's Solid Waste Department. This position frequently deals with technical terminology used in specialized work. To perform highly responsible secretarial and administrative work as personal assistant to the Solid Waste Superintendent, and perform with a greater degree of independence.

#### **Illustrative Duties:**

Assist in the planning, coordination and direction of the Solid Waste Activities. Provides general supervision for employees engaged in a wide variety of solid wastes and recycling operational activities and services. Provides the Solid Waste superintendent with information pertaining to departmental organization, personnel and equipment in determining the effectiveness of the Solid Waste Operations.

Gathers, verifies and documents, information required by regulatory authorities. Prepares records, reports and grant information and forms when required. Applies for grants and complies with requirements of grants including reports, requisitions, documents, etc.

Participates in meetings with the general public to resolve problems, answers questions and exchanges information concerning Solid Waste and Recycling activities. Promotes and supervises the County's recycling and hazardous waste management programs.

Takes and transcribes dictation concerning correspondence and related dictation. Prepares forms independently and composes letters. Sets up files and files letters and related materials in an accepted manner, assembles information for supervisors use. Keeps supervisors appointments calendar and schedules appointments, advises supervisor of important meetings. Receives and

screens callers, gives information on the operation of the office and to persons seeking assistance, refers callers to other employees, officials or departments as necessary.

Attends conferences, meetings or other official functions. May attend as the representative of the Solid Waste Superintendent. Tracks the sale of recyclables and accounts for funds received from the recycling program. Responsible for the tracking and associated record keeping relating to hazardous waste management.

Assist in budget reports, preparation and maintenance. Performs various related statistical duties and reports including environmental permitting record keeping requirements. May be required to take continuing education courses as may be required for the position.

Performs related work as required.

#### Knowledge, Abilities and Skills

Considerable knowledge of Business English, spelling and punctuation; office practices and procedures; considerable ability to make independent decisions in behalf of Superintendent during absence; ability to establish and maintain harmonious working relationships with Public Officials, employees and the public; ability to comprehend terminology used in Solid Waste. Ability to speak in public.

#### Minimum Qualifications

Graduation from an accredited high school or possession of an acceptable equivalency diploma. Three (3) years of Secretarial/Clerical experience, one (1) of which should be at a high level of secretarial work.

A comparable amount of training and experience may be substituted for the minimum qualifications.

#### Resource Recovery Crew Leader

##### Major Function:

This position involves skilled supervisory work in direct assistance to the Solid Waste Superintendent with responsibility for the activities of subordinate supervisors and employees. It involves the compaction, processing and recycling of solid waste for Hardee County. The employee works under general supervision of the Superintendent. The employee insures processing and recycling activities at the Material Recovery Facility are carried out within established time tables and requirements set by the Solid Waste Superintendent.

##### Illustrative Duties:



To check daily with subordinate employees on assigned work insuring work is accomplished in accordance with plans and schedules.

Assists in determining equipment and facility needs.

Schedules and assigns employees work tasks at the Material Recovery Facility.

Schedules maintenance on equipment and service and expedites acquisitions of parts and materials necessary for the operation of the Material Recovery Facility.

Schedules rolling stock and heavy equipment to those areas as determine by load factor at the Material Recovery Facility.

Investigates and takes action to solve problems and complaints that arise at the Material Recovery Facility.

Performs related work as required.

#### **Knowledge, Abilities and Skills:**

Knowledge of the operation, maintenance, limitations and safety precautions of equipment.

Knowledge of the tools and practices used in the Material Recovery Facility. Ability to operate the equipment in a safe and efficient manner. Ability to understand and follow oral and written instruction. Ability to perform manual labor under adverse conditions. Ability to lead crew.

#### **Minimum Qualifications:**

Graduation from an accredited high school or possession of an acceptable equivalency diploma.

Experience in the operation of light equipment and trucks. Possession of a valid Florida Class A or B drivers license. A comparable amount of training and experience may be substituted for minimum qualifications.

#### **Resource Recovery Operators**

##### **Major Functions:**

Manual Work consisting of all tasks relating to solid waste disposal, volume reduction, and resource recovery. Employees assigned to this position will be responsible for the safe and efficient operation of motorized and stationary equipment utilized in the solid waste disposal process.

##### **Illustrative Duties:**

Operates loader on tipping floor, operates baler, various types of loaders, forklift, wood chipper, shredder, glass crusher, can separator. Drives a dump truck. Assists in work area clean up, directs the public to proper disposal areas, check materials dumped on tipping floor for hazardous and non-acceptable items, loads and organizes recyclable material for shipping. Performs related work as required.



### **Knowledge, Abilities and Skills**

Knowledge of procedures necessary to safely, skillfully and economically operate medium size mobile equipment. Knowledge of laws and County regulations pertaining to the safe operation of equipment. Ability to perform routine maintenance on equipment and assist with periodic maintenance. Ability to understand and follow oral and written instructions. Ability to operate the above described equipment without continuous and direct supervision. Ability to perform the physical work related to the position. Skill in the operation and care of various types of moderately complex equipment.

### **Minimum Qualifications**

Two years experience in the operation of varied medium size equipment, conveyor and baling processes. A combination of education, training and experience that provides the above described knowledge, abilities and skills. Possession of a valid FL Class B CDL license required. A comparable amount of training or experience may be substituted for the minimum qualifications.

## **EQUIPMENT VENDORS LIST**

### **Contractors Listing**

- |    |                     |   |
|----|---------------------|---|
| 1. | Electrical          | Ashely Electric Company, Inc.<br>615 Morgan Road<br>Winter Haven, FL 33880<br>813/324-0929    |
| 2. | Metal Building      | Whirlwind Building Systems<br>8234 Hansen Road<br>Houston, TX 77075<br>713/956-7140           |
| 3. | Plumbing            | Graves Plumbing<br>15 South Seminole St.<br>Ft. Meade, FL 33841<br>863/285-8265               |
| 4. | Recycling Equipment | Florida Equipment and Machinery<br>8338 Epicenter Blvd.<br>Lakeland, FL 33804<br>941/984-3858 |

- |   |                    |  |
|---|--------------------|--|
| 5 | Pumps              | Barney's Pumps, Inc.<br>P.O. Box 3529<br>Lakeland, FL 33802<br>941/655-8500            |
| 6 | Septic System      | Berns Septic Tank Company<br>3585 Highway 17 North<br>Bartow, FL 33830<br>941/533-7414 |
| 7 | Finisher Hardware  | Cement Products and Supply Co.<br>P.O. Box 12<br>Lakeland, FL 33802<br>941/685-5141    |
| 8 | Overhead Doors     | J.B. Mathews Corp.<br>P.O. Box 608100<br>Orlando, FL 32860<br>800/226-3667             |
| 9 | General Contractor | SEMCO Construction, Inc.<br>205 Century Blvd.<br>Bartow, FL 33830<br>941/533-7193      |

## EQUIPMENT LIST

- |   |   |  |
|---|---|--|
| 1 | Bobcat Loader 863   | Melroe Ingersoll-rand                                  |
| 2 | Catapiller Forklift Truck, T50D   | Ringlift   |
| 3 | Shredder, 1500E   | SSI Shredding Systems Inc (FL Equipment & Machinery)   |
| 4 | Selco Baler 2NR75 (Hi density/2 ram)  | Selco Balers   |
| 5 | Wire Tie System, 330  | U.S. Wire Tie Systems                                  |
| 6 | Can Sorter/Model #CC1207  | C.P. Manufacturing Co. (FL Equipment & Machinery)      |
| 7 | Glass Crusher   | C.S. Bell Manufacturing Co. (FL Equipment & Machinery) |
| 8 | Inclined Steel Belt Conveyor 36'X6'<br>Rubber Belt Conveyor 20'<br>Rubber Belt Conveyor 40' | Conveyor A.R. Products (FL Equipment & Machinery)      |
| 9 | Ford F700 Flat Bed Dump Truck   | Atlantic Ford  |

Maintenance of equipment is performed according to maintenance manuals scheduled of each piece of equipment. Light maintenance and repairs are made by in-house personnel. Heavy maintenance and repair are made by Hardee County Public Works Maintenance Shop or the outside vendor of the equipment.

Parts and services are same day or within 72 hours. Some wear parts are kept in stock for baler and wire tie system. Rental Equipment or loaners are utilized whenever a piece of rolling stock equipment breaks down.

Service and maintenance manuals are available in the office of the Material Recovery Facility for use when needed. See Appendix A for types of manuals available.

## **WASTE CONTROL PLAN**

Upon entering the Solid Waste Facility, each vehicle must register at the scale house. The vehicle is weighed, classified and assigned a destination. To do so, the weighmaster will ask the driver about the contents of his load and visually check to determine the classification. If classification or destination can not be determined at this point, the weighmaster will instruct the driver to one of the operators in the landfill or in the MRF to inspect the load further. If the load is classified as Residential, Commercial, Institutional or perhaps mixed, it will be sent to the MRF.

Upon entering the MRF, vehicles are instructed to dump their waste onto the tipping floor. On or more of the Resource Recovery Operators will observe the contents of the load and check for unacceptable materials. Should the operator observe materials that are acceptable but should have been sent to one of the other sites in the landfill, he/she will instruct the driver to the proper site and explain the proper way to segregate their waste. Should the operator observe unacceptable waste, he/she will notify the solid waste superintendent or a trained landfill operator for further instructions.

In addition, as per 40 CFR Part 258, there will be a minimum of three random load inspections completed each week. Each inspection will be recorded by personnel trained to recognize regulated hazardous waste or PCB waste and notification of state director of authorized states under subtitle C of RCRA or the EPA Regional Administrator if in an unauthorized state if a regulated hazardous waste or PCB waste is discovered at the facility.

## **FIRE CONTROL PLAN**

In case of a fire in the MRF, the responding agency is the Hardee County Fire and Rescue Services, located approximately 3.5 miles east in Wauchula. The site is equipped with a dry fire hydrant for the filling of pumper trucks. There are also six fire extinguishers and five hose bibs

located throughout the facility, all of which are clearly marked. A copy of the fire escape plan is located in Appendix B.

## **CONTINGENCY PLAN**

In the event, for mechanical or other reasons, the MRF has to cease operation, the scale house operators will direct the waste loads to the Class I Landfill for compaction and disposal by conventional landfill methods.

## **CLOSURE PLAN**

Hardee County will notify DEP 180 days prior to closure of the Material Recovery Facility (MRF).

Within 30 days of receipt of final waste, Hardee County shall start closure cleanup.

The MRF processes approximately 55-60 tons per day average of material plus the on-site temporary storage of recyclables may approach 15 tons for a total of 70 tons of material that may require processing if the facility closed on an emergency basis. It is assumed that four vehicles could transport this waste to a facility permitted for disposal. Using the same values as above-referenced, transportation and disposal would reflect a total estimated cost of \$3,000. Adding and additional \$1,000 for general site cleanup for the combined tire/MRF area, the resulting total cost is estimated at \$3,041.

Completion of closure activities shall be completed within 180 days of receipt of final waste and DEP will be notified that closure is complete.

All closure costs for this facility will become a part of the Financial Assurance Cost Estimate for closure of the Hardee County Class I Landfill. The Financial Assurance Cost Estimates was submitted to DEP November, 1999 and approved by the DEP February, 2000.



# APPENDIX

## A



**SSI Shredding Systems**

28655 SW Boones Ferry Road

P.O. Box 869

Wilsonville, OR 97070

(503) 682-3633

FAX (503) 682-1704



**OPERATING, MAINTENANCE, AND SERVICE  
MANUAL FOR ELECTRIC-DRIVEN  
ROTARY SHEAR SHREDDER**

**MODEL: 1500-E**

**HP: 60**

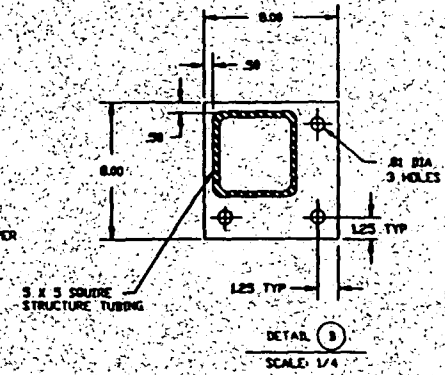
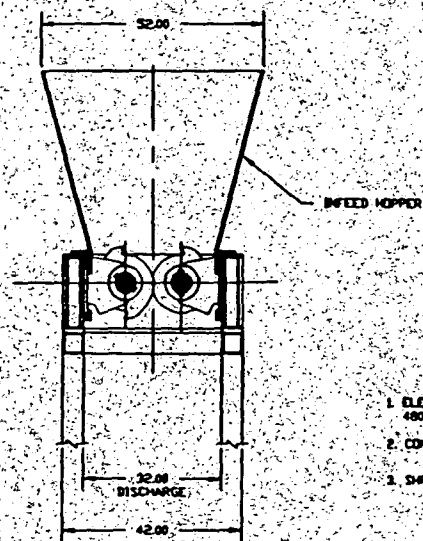
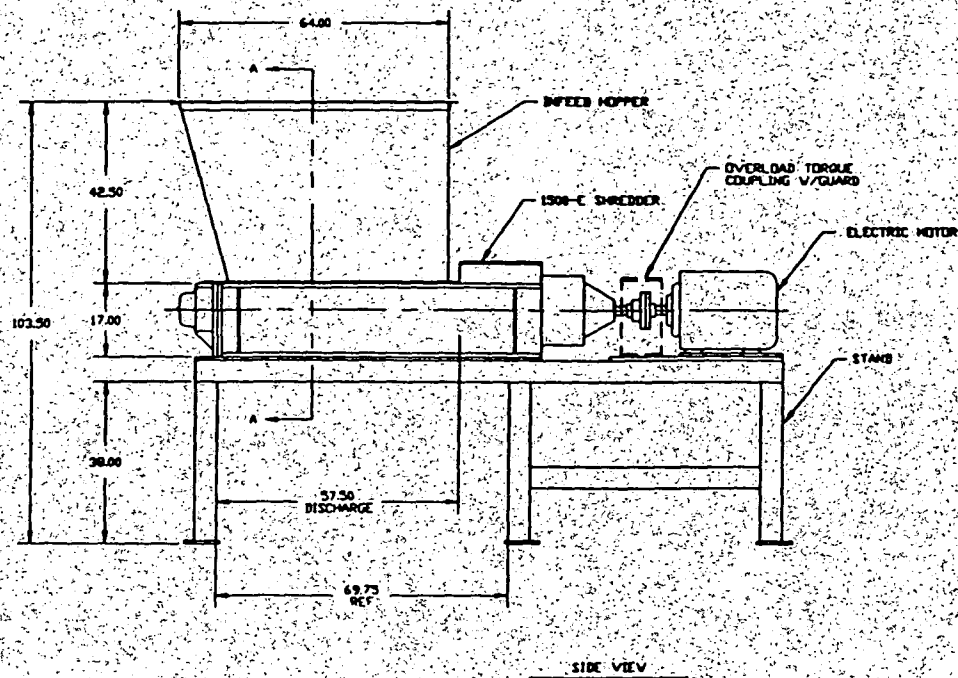
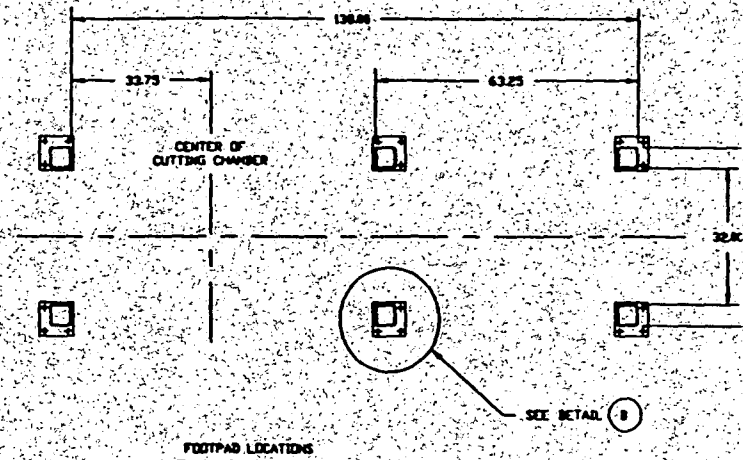
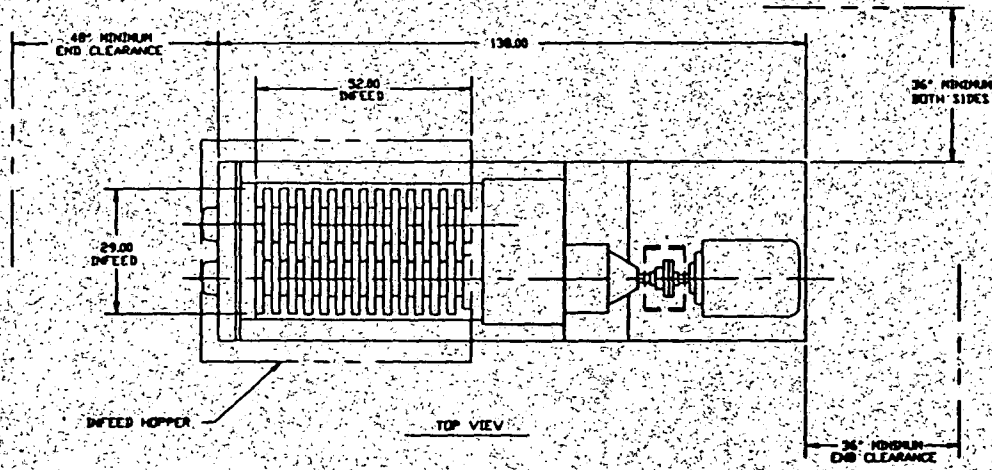
**SSI SHREDDING SYSTEMS, INC.**

**CUSTOMER: Florida Equipment**

**SERIAL NO: 91-205-0472**

**PUBLISHED: April 24, 1991**

**NOTE:** This manual contains information which is the property of SSI Shredding Systems, Incorporated. By accepting this information, the borrower agrees that it will not be used for any other purpose than that which it is loaned.



1. ELECTRICAL POWER REQUIREMENTS: 480V, 3 PHASE, 60HZ.
2. CONTROL PANEL NOT SHOWN
3. SHREDDER WEIGHT - 10,000

UNLESS OTHERWISE SPECIFIED  
DIMENSIONS ARE IN INCHES AND  
TOLERANCES FPM

PL. 8482 4

0	RELEASED
REV.	CHANGE DESCRIBED
SHREDDING S	
THIS PRINT CONTAINS CONFIDENTIAL INFORMATION OF SHREDDING SYSTEMS INCORPORATED BY THE SHREDDING SYSTEMS THAT IT WILL NOT BE RELEASED TO THE PUBLIC WITHOUT THE WRITTEN PERMISSION OF SHREDDING SYSTEMS INCORPORATED	
DRAWN BY	SCALE
COLEMAN	1/16
SHREDDER L	



# Can Pak CC1207 Can Sorter

FROM CP MANUFACTURING

Making the most of your valuable time and resources by buying only what you can resell is important. And that's what the Can Pak™ CC1207 Can Sorter from CP Manufacturing is all about. It allows you to easily sort aluminum cans from steel and other contaminants *before* you buy them, making your recycling more efficient *and* more profitable. And it's designed to fit your budget, so that even with lower volume needs, you get high volume results.

## It's Efficient

The CC1207 sorts up to 2,500 lbs. of aluminum cans per hour. It quickly, cleanly separates steel from aluminum. Simply dump the cans into the hopper. A 12" wide conveyor belt with vulcanized PVC cleats carries a single layer of cans over a magnetic head pulley, efficiently removing steel cans and

other ferrous materials, and making visual inspection easy. The remaining aluminum cans fall into a container below. The tail pulley assembly is adjustable from outside, so you can easily adjust the conveyor belt tension.

## It's Durable

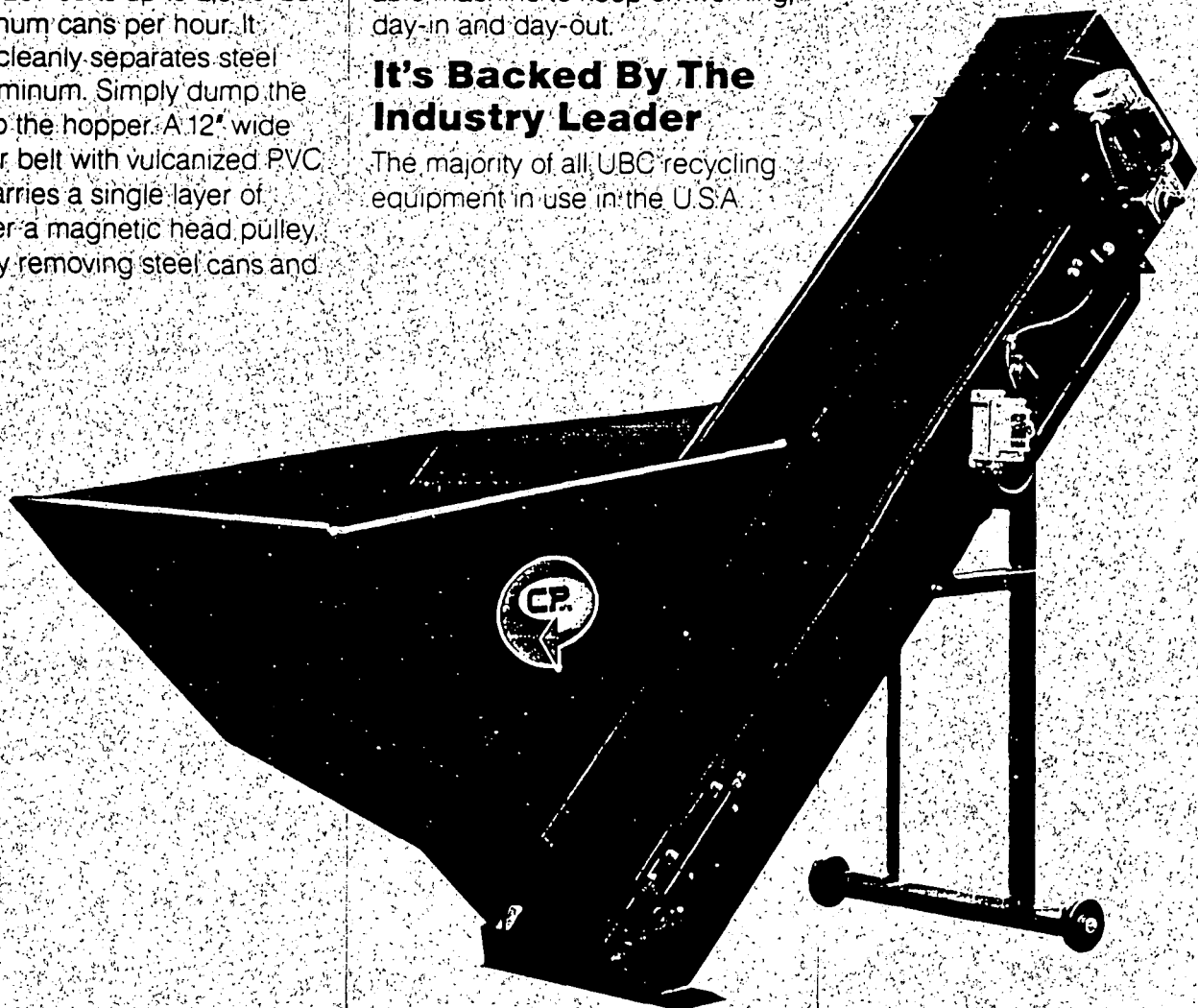
The CC1207 is built to last. It's got a minimum of moving parts for the lowest maintenance possible. Sturdy 5" casters give you flexible placement and operation. And with a strong 1/3 horsepower motor, you can count on this durable machine to keep on working, day-in and day-out.

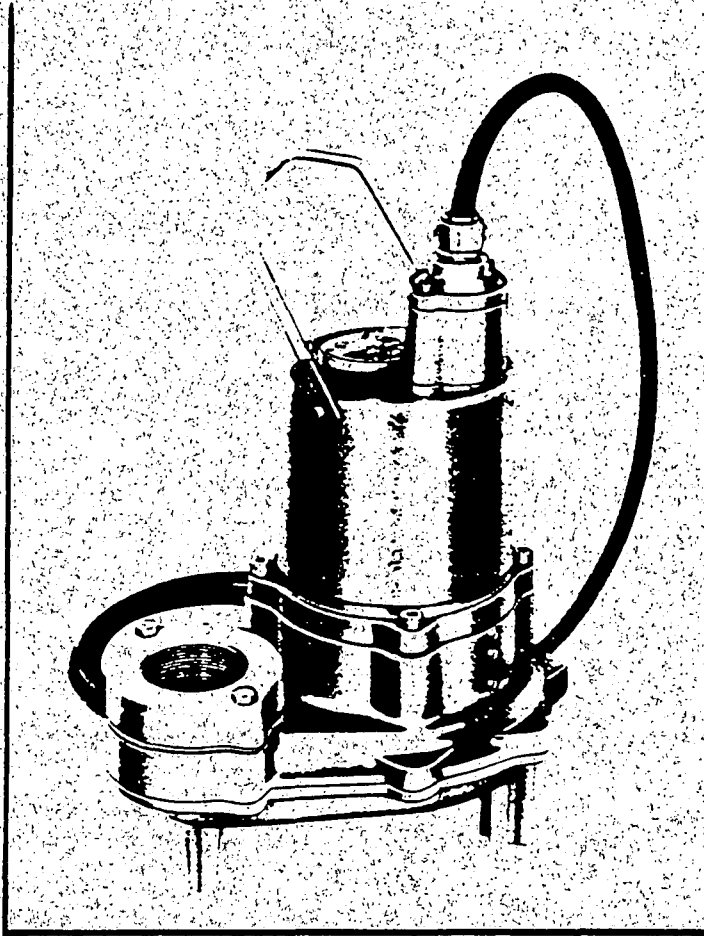
## It's Backed By The Industry Leader

The majority of all UBC recycling equipment in use in the U.S.A.

today has been built by CP Manufacturing. And no matter what recycling tools you buy from CP you can count on us to deliver dependable, sturdy construction with minimum maintenance.

So if you're ready to save your valuable time and energy, *plus* make your operation more profitable than ever, call us today, **(619) 477-3175**. The Can Pak CC1207 Can Sorter is ready to go to work for you!





# **S & SH Series Non-Clog, Heavy-Duty Sewage & Industrial Submersible Pumps for handling sanitary and other drainage**

**HYDROMATIC  
PUMPS**  
A Marley Pump Company



## **Special Construction Features:**

**MOTOR STATOR** — Open type stator construction permits easy removal when necessary, and can be rewound in the field. Winding is completely sealed against moisture and operates in clean dielectric oil that dissipates heat and lubricates motor bearings. Motor is lubricated for life — no periodic greasing operations required.

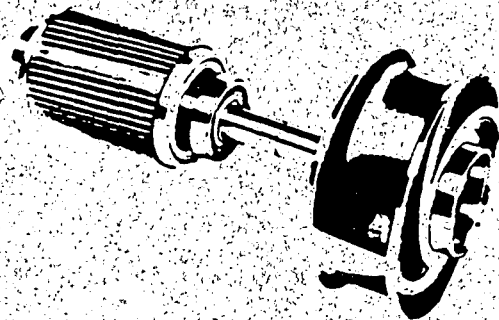
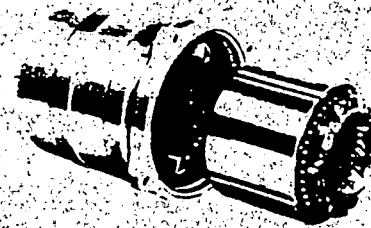
**PUMP IMPELLER** — Two-vane, non-clog impeller of the enclosed type with impelling vanes on both the front and rear shrouds. Balanced, cast iron design is perfect for sewage, grease, dirt and other sump materials.

**SHAFT AND BEARINGS** — Threaded Type 303 stainless steel shaft absorbs vibrating forces that occur when impeller passes solids; provides protection against corrosion and fatigue. Large upper and lower ball bearings rigidly support shaft and motor rotor and operate in bath of clean oil.

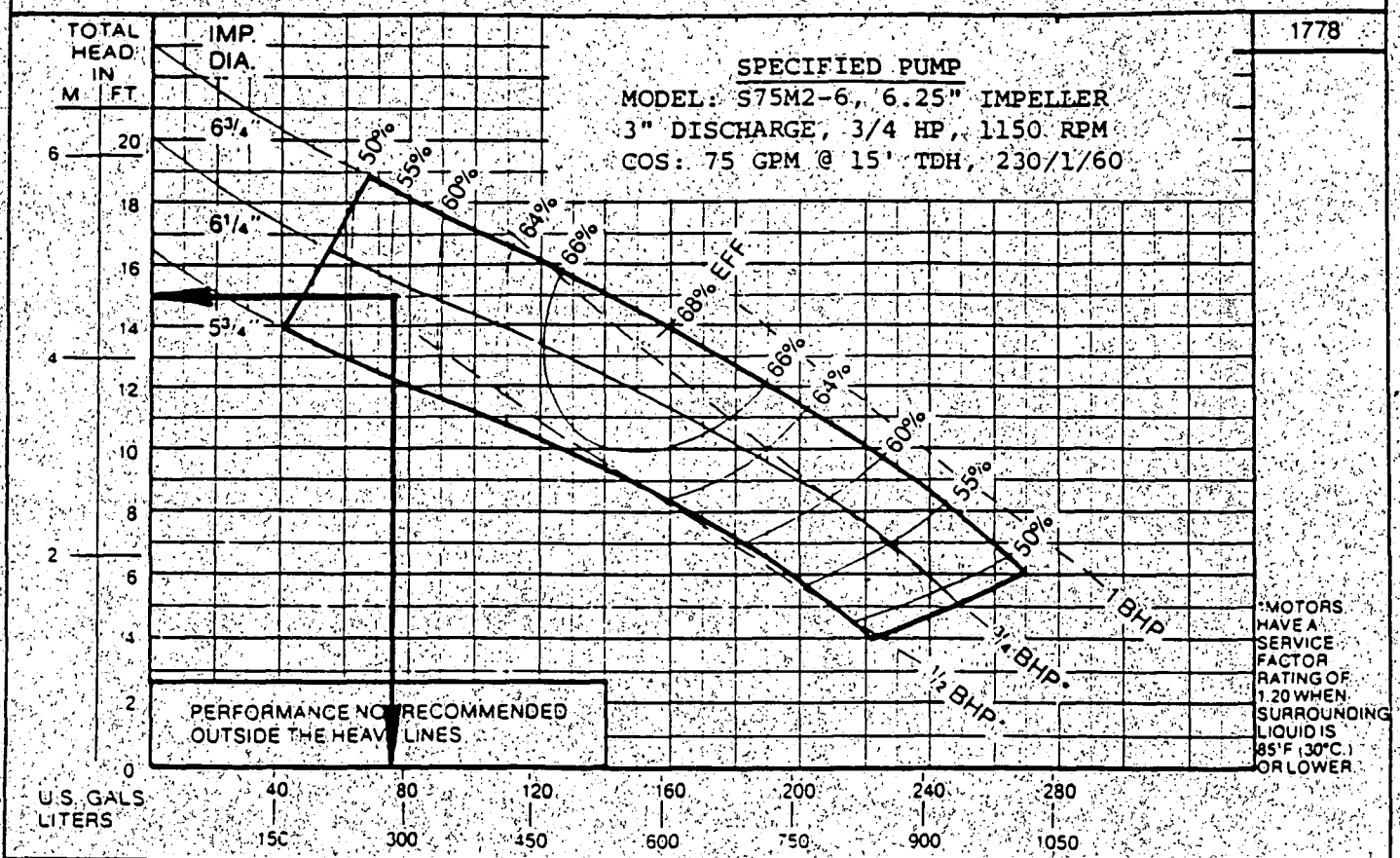
**MATERIALS** — Motor housing, pump castings, and impeller are high grade cast iron. All fasteners are stainless steel. Pump case has replaceable bronze wear rings.

**FIELD SERVICEABLE** — Pump and motor can be dismantled and repaired in the field by any competent mechanic.

**MOTELS - HOSPITALS - CHURCHES - SCHOOLS - APARTMENTS**



MODEL: S SERIES SUBMERSIBLE SEWAGE PUMP - MAX. SOLIDS: 2 1/2" SPHERE - 1150 RPM





# ***SELCO***

---

# **BALERS**

---

# **OPERATORS MANUAL**

POST OFFICE BOX 406, JERKYL ROAD  
BAXLEY, GEORGIA 31513  
U.S. WATS 1-800-447-3526 GA WATTS 1-800-847-3526

RECEIVED

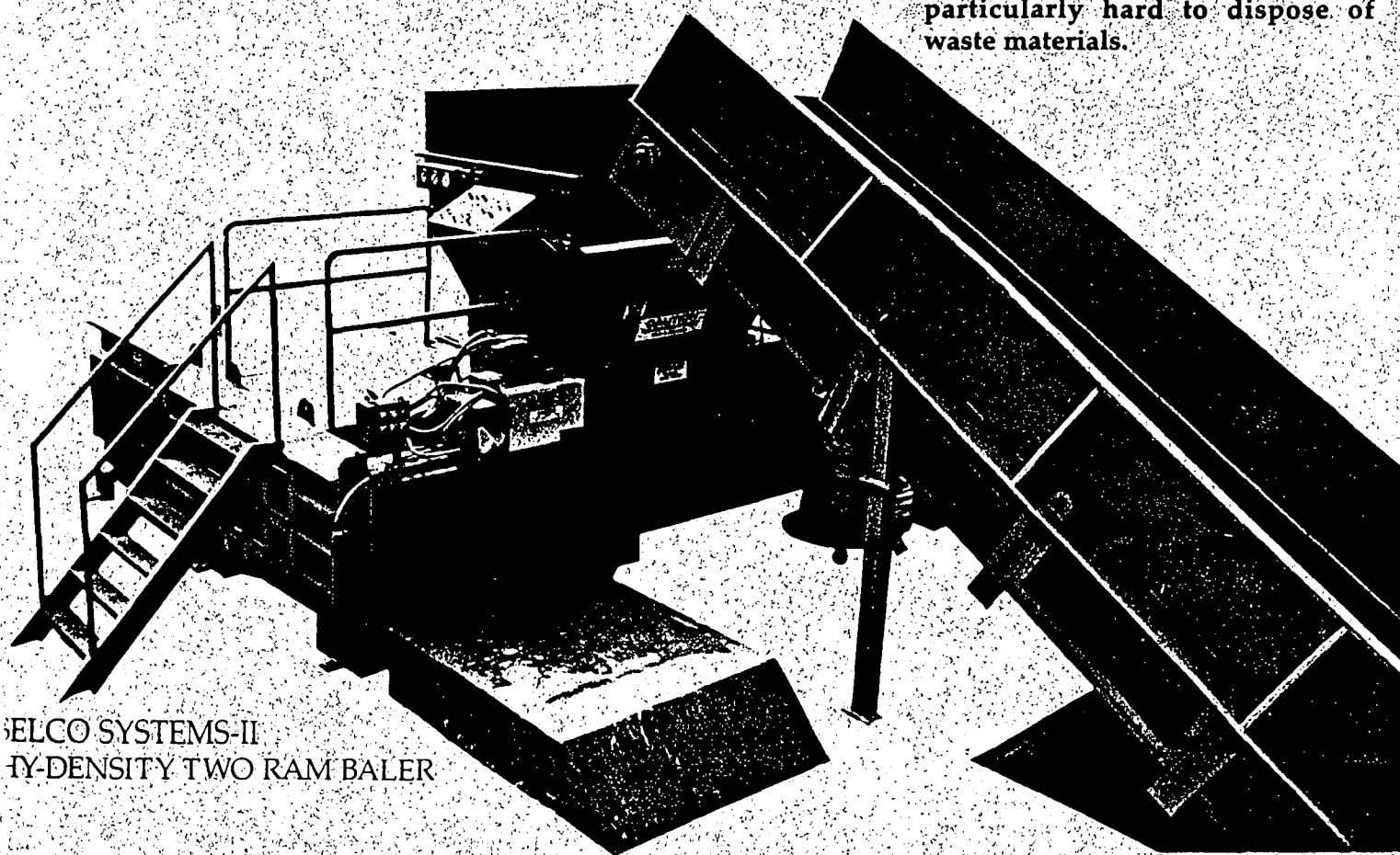
OCT 15 1991

HARDEE B.O.C.C.  
BY \_\_\_\_\_

# **SELCO**

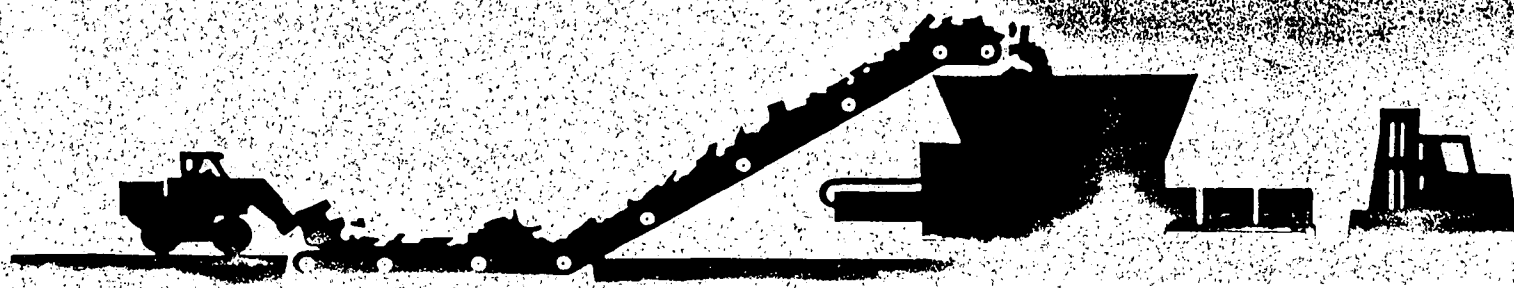
## ● *Setting New Standards For Balers...Again!*

For more than a quarter of a century SELCO PRODUCTS, INC. has been designing, manufacturing, and supplying waste volume reduction and densification systems. These systems provide industry, commercial enterprises and municipalities an economical way of recycling reclaimables thereby reducing the volume of the waste stream to the landfill or disposal site. Not only does SELCO offer a broad line of standard balers, conveyors and accessories, but can also provide custom-designed recycling systems to solve particularly hard to dispose of waste materials.



SELCO SYSTEMS-II  
HIGH-DENSITY TWO RAM BALER

*Disposal Is A Dead End...  
Recycling Is A New Beginning.*



**CATERPILLAR**

SEBU6001-02  
March 1990

# Operation & Maintenance Manual

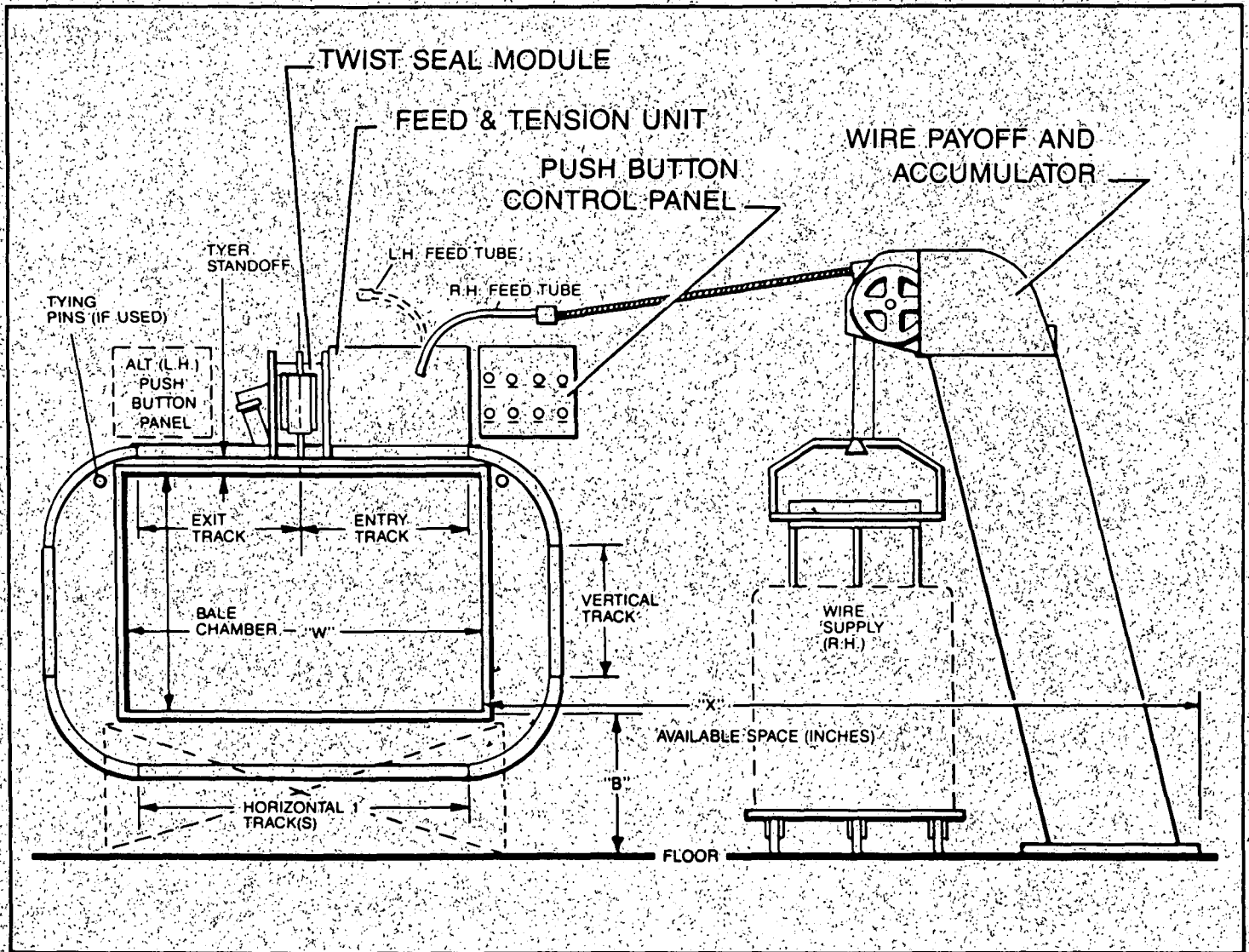
---

**T40D, T50D and TC60D  
V40D, V50D and VC60D  
Lift Trucks**

---

2MC1-UP  
2YB1-UP  
3EC1-UP  
3FC1-UP  
8EB1-UP  
9RB1-UP

## 330 SERIES AUTOMATIC WIRE TIEING HEAD





## TABLE OF CONTENTS

---

	Page
<b>Safety Precautions and Procedures</b> .....	6 thru 12
<b>Introductions</b> .....	13
<b>Installation</b> .....	14, 15
<b>Operation</b> .....	15 thru 17
Operating Principles .....	15, 16
Sequence of Operation, Manual and Automatic .....	16, 17
<b>Adjustments</b> .....	17 thru 21
Mechanical .....	17, 18
Hydraulic & Electric Components .....	18, 19, 20, 21
<b>Hydraulic Schematic</b> .....	22
<b>General Maintenance</b> .....	23, 24
<b>Preventive Maintenance</b> .....	24, 25
<b>Parts List</b> .....	26 thru 35
Knotter Unit Assembly .....	26, 27
Feed and Tension Unit .....	28, 29
Hydraulic Manifold .....	30, 31
Track Components .....	32, 33, 34
Escapement Assembly .....	34
Accumulator .....	35
<b>Payoff Components &amp; Adjustments</b> .....	36
<b>Troubleshooting Guide</b> .....	37 thru 42





**Products Company**

**MANUFACTURERS OF CONVEYORS & MATERIAL HANDLING SYSTEMS**

Florida Equipment & Machinery  
8338 Epicenter Blvd  
Lakeland, FL 33809

DATE: February 15, 1991  
QUOTATION NO: 350/0215-91-60  
DRAWING NO: ARP-SL-FEHCP

Page 1 of 3

ATTENTION: Mr. Larry Marble

We are pleased to submit the following proposal and specifications for:

One (1) AR PRODUCTS Steel Belt Conveyor manufactured and engineered in accordance with AR PRODUCTS standards and based on the following specifications:

**APPLICATION:**

C style feed system. Discharge elevation 14'-5" top of belt. Feed: mixed waste discharge to 60" x 40'-0" picking belt. PROJECT: HARDEE COUNTY.

**PHYSICAL DIMENSIONS:**

Belt Width - 60" inside wings  
Conveyor Length - Lower horizontal - 10'-0" CL./CL.  
- Incline Section - 26'-6" CL./CL.  
- Upper Horizontal - 00'-0" CL./CL.  
- Total length - 36'-6" CL./CL.  
Charging Height - 12" Below tipping floor (TOB)  
Discharge Height - 14'-5" above tipping floor (TOB)  
Curve - 1-35 degree up

**FRAME:**

Design - Open, structural steel  
Tracks - Upper 4"-13.8# ship channel  
- Lower 2 1/2" x 3" x 3/8" angle  
Wear Strip - 1 1/2" x 1/4" FL (lower track only)  
Vertical Supports - 6" WF 15.0 lb/ft I-beam  
Horizontal Supports - 4" 7.7 lb/ft I-beam  
Load - Impact Beams - 4" 7.7 lb/ft I-beam on 30" centers  
(1 set) running full length of conveyor including incline and upper horizontal.  
Side Skirts - 36" above belt surface.  
Wing Covers - .250 x 6 1/2 x 2 3/4 turned down over wings.  
Side Covers - Expanded metal above lower horizontal section.  
Inspection Panel - 1 each side, bolted construction.  
Oiler System - Gravity feed, 3 brush contact type, manual delivery, 1 gallon capacity.

**BELTING:**

- Type - AR PRODUCTS 6250-T-60-3-4-SB-CP, or equal die-formed, hinged steel (nominal 0.249"). 6" pitch.
- Impact Shoes - 3" x 3" x 1" welded to the bottom of every other pan section on 30" center distance. Total belt length.
- Side Wings - 4" x .250" nominal, formed to interlock, arc welded to belt surface.

**CHAIN:**

- Heavy Duty - Die punched, 6" pitch chain.
- Type - AR PRODUCTS No. 6P-SB-2 strands, or equal.
- Side Bars - Double row, 2" wide x 1/4" thick C1045 bar, precision die punched.
- Bushings - 3/4" I.D. x 1-1/8" O.D. x 2-1/16" long, hardened RC 50-60, press fit into inner side bars.
- Pins - 3/4" diameter alloy steel, cottered. Pin ends are milled flat to lock into outer bars.
- Rollers - 3" diameter x 1-7/16" wide, single flange tread, made of hardened steel.
- Sprockets - 6" pitch, 6 tooth, 12" P.D., flame cut hardened steel.

**BEARINGS:** Ball type with heavy duty pillow blocks. One piece cast iron housings. Double lip seal design.

**SHAFTS:** Head and tail shaft are 1144 stress proof high carbon steel. Machined for correct sprocket/chain alignment.

**DRIVE:** 7.5 HP motor, shaft mounted reducer with mechanical and electrical overload protection. Adjustable overload protection for specific conveyor application.

**ELECTRICAL CONTROLS:** All field wiring to be furnished by others. Motor starter with NEMA 12 enclosure. Pre-wired for 460 volt operation.

**INSTALLATION:** Furnished by others.

**SHIPPING:** Shipped in 2 sections for minimum installation hours.

Florida Equipment & Machinery Co.  
8338 Epicenter Blvd.  
Lakeland, FL 33809

DATE: February 15, 1991  
QUOTATION: 350/0215-91-60  
DRAWING #: ARP-SL-FEHCP

ATTENTION: Mr. Larry Marble

We are pleased to submit the following proposal and specifications for:

One (1) AR PRODUCTS Rubber Belt Conveyor system.  
60" width x 20'-0" Heavy Duty Design, 40 FPM, 0 degree  
incline, discharge elevation 9'-3" top of belt.  
Designed for above floor hopper feed.

**SPECIFICATIONS:**

Length -	Horizontal section - 20'-0" CL./CL.
	Total length - 20'-0" CL./CL.
Width -	60" belt
Belt Material -	200 lb. pull strength, nylon carcus, PVC top cover.
Cleats -	N/A
Head Pulley -	59" width, crowned and lagged, 10" diameter.
Tail Pulley -	59" width, crowned wing design, 10" diameter.
Idle Pulley -	5" diameter, sealed bearing design.
Bearings -	Morse, cast iron with ball bearing insert, double lip seal design.
Drive -	3.0 HP motor, C-face reducer, fully guarded system.
Speed -	40 FPM fixed.
Controls -	Motor starter, NEMA 12 enclosure, pre-wired for 460 volt, 3 phase.

**FRAME CONSTRUCTION:**

Pan -	3/16" plate, one piece construction.
Side Skirts -	6" above belt surface, 3/16" formed rolled edge.
Side Covers -	N/A
Frame Supports -	C-6" X 10.5# vertical, L-3 x 3 x 1/4 horizontal.
Bed Liner -	N/A
Frame -	1 piece construction.
Feed Hopper -	N/A

RBQUOTE

Florida Equipment & Machinery Co.  
8338 Epicenter Blvd.  
Lakeland, FL 33809-

DATE: February 15, 1991  
QUOTATION: 350/0215-91-60  
DRAWING #: ARP-SL-FEHCP

ATTENTION: Mr. Larry Marble

We are pleased to submit the following proposal and specifications for:

One (1) AR PRODUCTS Rubber Belt Conveyor system.  
60" width x 40'-0" Heavy Duty Design, 35 FPM, 0 degree  
incline, discharge elevation 11'-0" top of belt.  
Designed for above floor hopper feed.

**SPECIFICATIONS:**

Length -	Horizontal section - 40'-0" CL./CL.
	Total length - 40'-0" CL./CL.
Width -	60" belt
Belt Material -	200 lb. pull strength, nylon carcus, PVC top cover.
Cleats -	N/A
Head Pulley -	59" width, crowned and lagged, 10" diameter.
Tail Pulley -	59" width, crowned wing design, 10" diameter.
Idle Pulley -	5" diameter, sealed bearing design.
Bearings -	Morse, cast iron with ball bearing insert, double lip seal design.
Drive -	5.0 HP motor, C-face reducer, fully guarded system.
Speed -	35 FPM fixed.
Controls -	Motor starter, NEMA 12 enclosure, pre-wired for 460 volt, 3 phase.

**FRAME CONSTRUCTION:**

Pan -	3/16" plate, one piece construction.
Side Skirts -	6" above belt surface, 3/16" formed rolled edge.
Side Covers -	N/A
Frame Supports -	C-6" X 10.5# vertical, L-3 x 3 x 1/4 horizontal.
Bed Liner -	N/A
Frame -	1 piece construction.
Feed Hopper -	Flared for above floor feed.

RBQUOTE

**863**

**863**

**HIGH FLOW**



# Operation & Maintenance Manual

**S/N 514427600 & Above**

863 Europe Only (S/N 514525300 & Above)  
863H Europe Only (S/N 514625300 & Above)



**EQUIPPED WITH  
BOBCAT INTERLOCK  
CONTROL SYSTEM (BICS™)**

**MELROE  
INGERSOLL-RAND**

6900790 (11-98) Revised (3-99)

Printed in U.S.A.

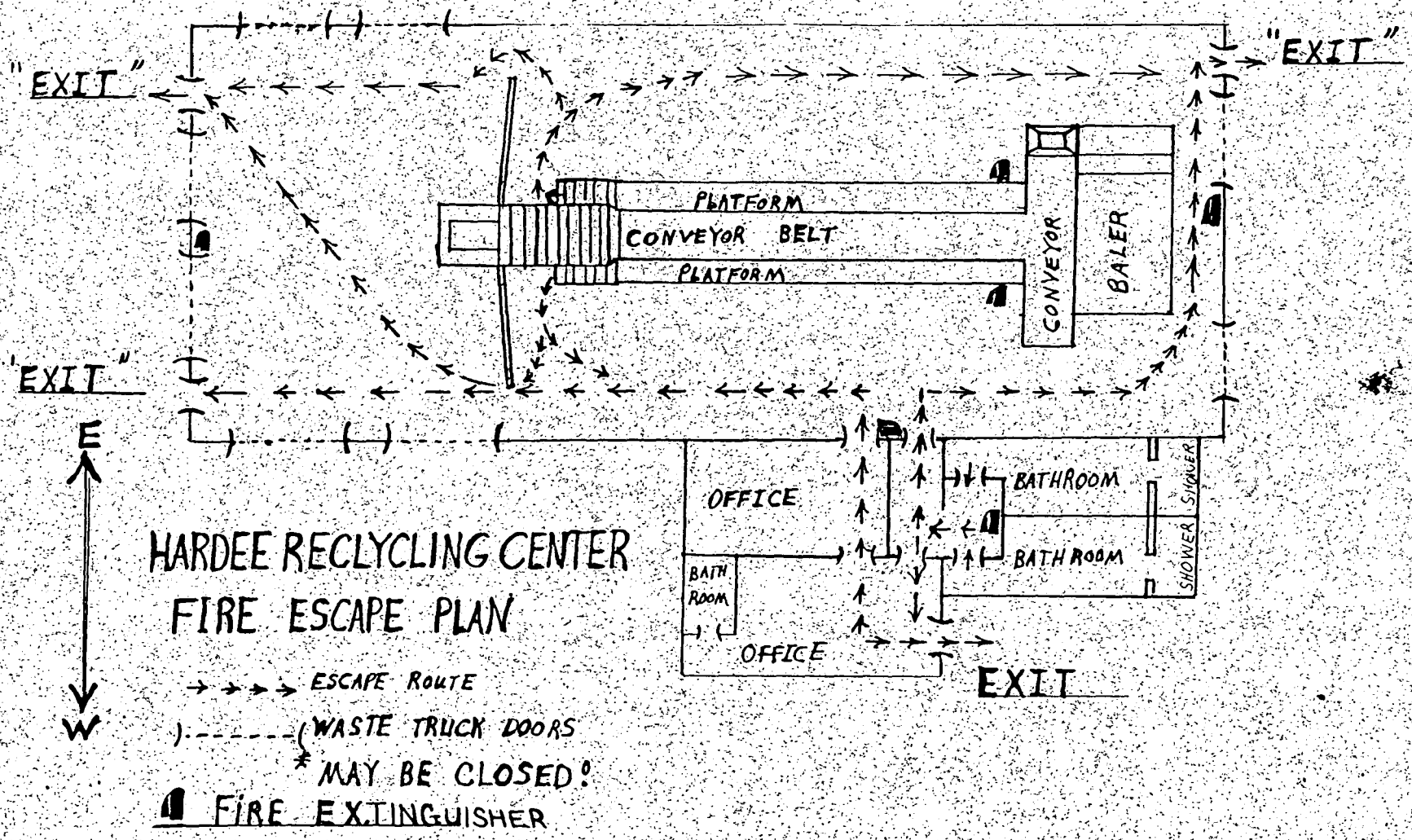


© Melroe Company 1999



# APPENDIX

## B



# APPENDIX

## C

## HELPFUL HINTS

- To recycle without wasting water, rinse your recyclables in left over dish water or place them in left over spaces in your dishwasher.
- Save paper: use both sides.
- Use canvas or cloth shopping bags at the grocery store or be sure to recycle the plastic and paper bags.
- Cut your waste at lunch time: Use a lunch box, not disposable paper or plastic bags. Use reuseable containers for sandwiches, fruit, cookies, chips, and beverages.
- Share newspapers and magazine subscriptions with friends and neighbors, or donate them to hospitals or nursing homes.
- Don't throw away old clothing. Give it to an organization that helps the homeless or needy.
- Avoid excess packaging at the store. Look for products that require little or no packaging or buy concentrated products or large quantity products.
- Buy rechargeable batteries.
- The average baby needs six to ten thousand changes over three years. Consider using cloth dlapers whenever possible.
- Use an electric razor or one that uses replaceable blades instead of disposable ones.

## ACKNOWLEDGMENTS

Produced with the cooperation of Hardee County Department of Solid Waste and Recycling Center, Hardee County Board of County Commissioners, and Hardee County's Outdoor Classroom.

Distributed by the Hardee County School District and the Girl Scouts of America.

Portions of our logo were reprinted from D.O.E.'s 4R's Project.

It's Girl Scouting's 80th Birthday, and we're celebrating in a very special way! Girl Scouts all over the United States will be committing themselves to work on a service project in their community that demonstrates "GIRL SCOUTS CARING FOR THE EARTH".



FOR MORE INFORMATION ON RECYCLING

**CALL: (813) 773-5089**

OR WRITE TO:

**HARDEE COUNTY**

Department of Solid Waste & Recycling Center

P.O. Box 246

Wauchula, Florida 33873

Recycled



Paper

# SAVE HARDEE COUNTY'S TOMORROW



# RECYCLE TODAY



## WHAT IS RECYCLABLE



### **GLASS**

ALL GLASS BOTTLES:  
BEER, JUICE, SODA, WINE AND LIQUOR  
BOTTLES, FOOD CONTAINERS, ETC...



### **ALUMINUM**

BEVERAGE CANS, PIE PLATES, FOIL,  
ETC...



### **STEEL OR TIN**

FRUIT, VEGETABLE AND JUICE CANS,  
PET FOOD CANS, STEEL LIDS FOUND ON  
GLASS JARS, ETC...



### **PLASTICS**

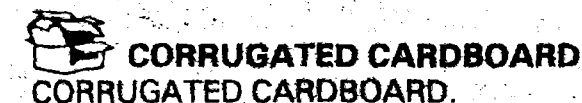
NUMBER 1 THROUGH NUMBER 7.

Numbers are on the bottom of the container  
in a triangle of arrows.



### **NEWSPAPER**

CLEAN - DRY NEWSPAPERS INCLUDING  
THE INSERTS THAT COME WITH THE  
PAPER.



### **CORRUGATED CARDBOARD**

CORRUGATED CARDBOARD.

## WHAT IS NOT RECYCLABLE

DISHES, MIRRORS, WINDOW GLASS,  
LIGHT BULBS, CLAY, CRYSTAL, OR  
CERAMICS.

ALUMINUM HEAVILY SOILED WITH  
FOOD OR GARBAGE.

CANS HEAVILY SOILED WITH FOOD OR  
GARBAGE.

STYROFOAM.

BOOKS, MAGAZINES, JUNK MAIL,  
PHONE BOOKS, SCHOOL PAPERS, NO  
STRINGS OR PLASTIC BAGS. NO WET,  
OLD NEWSPAPERS PLEASE.

WAXED COATED CARDBOARD, CEREAL  
AND FOOD BOXES. NO WET AND DIRTY  
CARDBOARD PLEASE.

## HOW TO PREPARE

- REMOVE LIDS
- RINSE LIGHTLY  
(No need to remove labels)

- RINSE LIGHTLY

- REMOVE ALL FOOD AND ANY PLASTIC  
LIDS AND RINSE LIGHTLY

- REMOVE LIDS AND RINGS
- RINSE LIGHTLY AND FLATTEN

- USE A PAPER BAG OR CARDBOARD  
BOX TO STORE YOUR NEWSPAPERS IN  
OR PLACE THEM IN YOUR RECYCLING  
BAG

- FLATTEN AND TIE IN BUNDLES

**GOOD NEWS:** THERE'S NO NEED TO SEPARATE YOUR RECYCLABLES! JUST PUT ALL OF YOUR RECYCLABLES IN A CLEAR  
OR TRANSPARENT TRASH BAG AND WE WILL DO THE SEPARATING FOR YOU.

IF YOU HAVE GARBAGE PICK-UP, SET YOUR CLEAR RECYCLABLES TRASH BAG ON THE CURB WITH YOUR  
OTHER GARBAGE OR BRING IT TO THE HARDEE COUNTY RECYCLING CENTER LOCATED AT THE HARDEE  
COUNTY SANITARY LANDFILL ON AIRPORT RD.



## HARDEE COUNTY MATERIAL RECOVERY FACILITY

### METHOD OF STORAGE FOR RECYCLABLES

MATERIAL	STORAGE UNPROCESSED LOOSE	STORAGE PROCESSED BALED	STORAGE TIME
GLASS-CLEAR AND AMBER	Stored in metal dump carts until carts are full. Metal dump carts are kept inside the facility, usually underneath the sorting belt.	Stored in one of two 25 cubic yard roll-off bins provided by the vendor. Bins are located outside of the facility on the southwest side of the pavement.	It takes approximately two to three months for the bins to be filled. Bins weigh an average of 9.5 tons.
ALUMINUM CANS	Loose aluminum cans are stored in plastic bins with covers. The bins are stored outside the south end of the facility beside the loading dock.	Baled aluminum cans are stored inside the facility directly behind the east containment wall of the tipping floor.	The storage time of aluminum varies greatly depending on market pricing and quantity. On the average it stored four to six months.
STEEL OR TIN CANS	Loose steel or tin cans are stored in plastic bins with covers. The bins are stored outside the south end of the facility beside the loading dock.	Baled cans are transported to the scrap metal site located adjacent the Class I Landfill. Baled cans are sold along with the scrap metal. This site has a hard shell floor.	Scrap metal is usually stored for three to six months before selling.
NEWSPRINT	Loose newsprint is stored in the drop-off trailer located northeast corner of the MRF.	ONP is hand-sorted and stacked by inmate labor.	ONP is stored one to three months.
OCC	Loose cardboard is stored in a paved, fence-in area connected to the east door of the facility. Cardboard is processed weekly.	Baled cardboard is stored outside of the facility on the south pavement.	Markets require 22 to 32 bales. This requires one to two months of storage time. Average loads weigh 22.5 tons.