

Appendix A

Operations Manual

**Facility: GARDEN STREET IRON & METAL
(WASTE TIRE PROCESSING CENTER)
WACS ID NO. 000098386**

**Location: 3350 METRO PARKWAY
FORT MYERS, FLORIDA 33916**

**Applicant: GARDEN STREET IRON & METAL INC. OF S.W. FLORIDA
ROB WEBER, PRESIDENT**

**Submitted to: FLORIDA DEPARTMENT OF ENVIRONMENTAL PROTECTION
PO BOX 2549
FORT MYERS, FLORIDA 33902-2549**

**Prepared by: KEENE ENGINEERING, INC.
PO BOX 2770
FORT MYERS, FLORIDA 33902**



Date: November 25, 2014

TABLE OF CONTENTS

APPENDIX A WASTE TIRE PROCESSING FACILITY OPERATION MANUAL

Section 1: Facility Operation Plan

Section 2: Tire Processing Facility FDEP Permit

Section 3: Emergency Preparedness Manual

Section 4: Fire Safety Survey

Section 5: Quarterly Reporting Form

Section 6: Closing Plan
Copy of financial Assurance (Bond)

Section 7: Facility Plan Set 24" x 36"

Section 1

Facility Operation Plan

FACILITY OPERATION PLAN

**GARDEN STREET IRON & METAL
(Waste Tire Processing Center)**

November 25, 2014

The following plan has been prepared for the use of the Garden Street Iron & Metal employees which will be operating the waste tire processing facility on a day to day basis. This discussion itemizes the relevant rules and documents with which the operators of the waste tire facility must be familiar.

I. Florida Department of Environmental Protection Waste Tire Processing Facility Permit.

The FDEP permit approval for the facility is included in the operation manual.

The permit was approved on _____.

The permit will expire on _____.

The application deadline for permit renewal is _____.

The Financial Assurance anniversary date is _____.

There are conditions of approval for the permit. The above blanks are to be filled in once the permit has been issued by FDEP.

II. Description of facility’s operation, process and products including how waste tires will be received and stored. (Application Part III.B.1.)

The shredder plant is located on the northwest quadrant of the property. Sheet 2A and Sheet 3 depict the location of the facility within the overall property boundaries. Sheet 3D of the accompanying plan set depicts the flow of waste tires through the facility.

The facility is design primarily for the disassembly of scrap metal item such as automobiles, light and heavy trucks and trailers, appliances, machinery, and other items which contain metal. This facility is capable of efficiently removing nearly all of the metallic components from these waste items and reintroducing these metals into the raw material stream for manufacturers. The primary products created from this process are ferrous shred and non-ferrous mixed metal shred consisting primarily of aluminum. The rest of the component material from the recycled items is deposited in the final waste bunker. This material is generally referred to as fluff or ASR (Automotive Shredder Residue). It consists of rubber, plastic, foam, fabric, glass and soil. Currently, the waste tires are being received and processed along with the normal recycling operation. The steel is removed for recycling and the rubber is included in the fluff waste. This application, if approved, will allow the facility to store the tires incoming for a period of 4 to 7

days, at which point the waste tires would be processed independent of the normal recycling operation.

The time period of storage is dependent upon the maintenance of the shredder. The shredder blades are changed and the fluff bunker is removed every few days depending on the quantity of material processed. The waste tires will be processed through the clean machine, providing a rubber material free of fluff. This would produce clean tire shred suitable for recycling or other repurposing uses.



Scrapped automobile being placed onto the in-feed conveyor.



Scrap material being handled at the feed stock blending area, near the in-feed conveyor. Harris Shredder is in the background.

Please note that tires which are attached to a scrapped vehicle, truck or trailer are not accounted for separately from the scrap metal and will not be reported on quarterly reports.

The vehicles carrying the bulk waste tire deliveries will be weighed on the incoming and outgoing truck scales. The quantity of waste tires will be determined by the net difference in vehicle weight. All customer data is recorded in the facility's "point of sale" (POS) system. The POS system is a software program called Scrap Dragon. This system provides centralized data collection, storage, and recording of financial transactions including the weight of any scrap or waste tires received by the facility. The tonnage of bulk waste tires received will be listed on the quarterly reporting to FDEP.

Once weighed, customers are directed to the designated waste tire storage area on the sheet 3B of the plans. This designated storage area is to be clearly marked on site with a

painted yellow line. At this location, waste tires are stacked until processing.

When waste tire processing is started, the waste tires are placed onto the in-feed conveyor and shredded into sufficiently small pieces suitable for recycling. See photos below for close-up views of the final waste material. It is expected that all bulk waste tire deliveries accepted will be shredded in this fashion.

All bulk waste tire deliveries accepted will be shredded in this fashion. The only waste tires that will be stored in the designated area on the sheet 3B of the plans set will be take-offs from the semi-trailers that are received for disposal and enclosed trailers or roll-off dumpsters loaded with mixed waste tires. This designated storage area is to be clearly marked on site with a painted yellow line.

The waste tire storage areas will be able to hold 16,000 tires, including approximately 1,500 over



the road (OTR). The OTR take offs will be stored on edge in a single layer as shown in the photo. It is estimated that the maximum number of waste tires stored in this fashion is about 1,500 OTR tires. Please note that some of these tires remain mounted on rims preventing any chance of collecting water inside the tire. The maximum number of waste tires potentially placed in this storage area, however, is 3,000 tires.

Existing used truck tires taken off of box trailers that have been scrapped. These are located in the Used Tire Storage Area.

In the case of a prolonged breakdown of equipment, major bulk tire accounts will be asked to temporarily suspend deliveries until the shredding equipment has been restored.

Note, the entire processing area is paved with an 8" thick 5000 psi concrete slab. This prevents scrap material from being mixed into the underlying soils. Also note that no products are anticipated to be produced from the waste tires process at this facility.

III. A description of the equipment used for processing tires. This description shall include the make, model, and hourly capacity of each piece of equipment. (Application Part III.B.2.)

The main mechanical component for this facility is a 98 inch steel shredding rotary hammer mill manufactured by Harris Equipment. The model number is HS98115. This machine is capable of shredding entire automobiles into pieces small enough to be picked up by hand. The shredder has an operating capacity in excess of 100 tons per hour. The facility also has additional equipment that further sorts the shredded material into its main metallic, non-metallic, and waste components.

IV. Description of waste from the process, the amount expected and how and where this waste will be disposed of. (Application Part III.B.3.)

It is expected the 100% of the waste tires received under the waste tire permit will be shredded and turned into a waste material. It is anticipated that the waste tire will be process separately as the incoming stream of waste tire collector customers is expected to be consistent and sufficiently large enough. Waste tires will have to be stored for a period of 4 to 7 days. This will not interfere with the existing and ongoing metal recycling operation. All of the waste material will be recycled.



Close-up view of material in the final waste bunker (Fluff).



Processed tire pieces from final waste bunker.

V. Statement of the maximum daily throughput and the planned daily and annual throughput. (Application Part III.B.4.)

As stated above, this shredder has an hourly feed rate in excess of 100 tons/hour of blended material. An estimate of the maximum capacity of this shredder is as follows:

Hourly blended feed rate into the shredder	100 tons/hour+
Conservatively high percentage of waste tires	10%
Hourly rate of waste tires	10 tons/hour
Conversion factor for passenger tires	20 lbs/tire

Estimated rate of waste tire feed is as follows:

$$\frac{10 \text{ tons}}{\text{hour}} \times \frac{2,000 \text{ lbs}}{\text{ton}} \times \frac{1 \text{ tire}}{20 \text{ lbs.}} = \frac{1,000 \text{ tires}}{\text{hour}}$$

Presently, the shredder operates 5 to 6 hours per day, 6 days a week. This gives a processing capacity of 5,000 to 6,000 processed waste tires per day or 30,000 to 36,000 processed waste tires per week. Annually, the capacity would be 1,560,000 to 1,872,000 tires per year. This equates to approximately 15,600 to 18,720 tons at a conservatively high 10% blend rate.

Currently, the average daily throughput is 1,400 tires (14 tons +/-). The annual quantity of waste tires processed is estimate to be 420,000 tires (4,200 tons, +/-).

VI. Description of how the operator will maintain compliance with each of the storage requirements of rule FAC 62-711.540. (Application Part III.B.5.)

Different from other tire processing facilities, the equipment necessary to shred the waste tires is permanently installed at this facility. And given the shredding capacity of the Harris mill, it is expected that the storage of tires will not be a major problem. Relatively speaking, the bulk waste tire component of the total facility operation is very small. The enclosed plans designate the areas in which tires will be stored and blended. These areas, though, will not be completely covered with waste tires at all times. The waste and used tire storage area will be clearly marked as described as described in Section II.

In the case of a fire in the blending and tire storage areas, there are typically two types of large equipment in this vicinity, a large grapple crane and a large solid tire front end loader. These two pieces of equipment are capable of being used in the initial moments of a fire to pull smoldering or flamed portions of stored material away from the remainder of the pile. This helps to minimize the potential of the fire to escalate into a larger event. The fire department will provide response to a fire in these areas as well.

Additionally, each of the requirements of FAC 62-711.540 is being addressed below for clarification:

FAC 62-711.540(1)(a), Entrance Sign – This facility will receive waste tires from the general public. A sign will be posted at the entrance of the in-bound truck scales stating the operating hours, cost of disposal, and site rules. See Sheet 3D of the plan set for the sign location.

FAC 62-711.540(1)(b), Open Flames - No open flame are allowed within 25 feet of any waste tire storage piles.

FAC 62-711.540(1)(c), Attendant – This facility will receive waste tires from the public. An attendant shall be present when the site is open for business.

FAC 62-711.540(1)(d), Fire Safety Survey – See Division 4 of this manual for the fire safety survey.

FAC 62-711.540(1)(e), Emergency Preparedness Plan – See Division 3 of this manual for the Emergency Preparedness Plan.

FAC 62-711.540(1)(f), Department (FDEP) Notification – See Section VII of this plan.

FAC 62-711.540(1)(g), Record Keeping – See Section XII of this plan.

FAC 62-711.540(1)(h), Owner Authorization – The operator of this facility is the same as the land owner.

FAC 62-711.540(1)(i), Communication Equipment – Communication equipment shall be maintained at the facility at all times to assure that the site operator can contact local fire protection authorities in case of fire

FAC 62-711.540(1)(j), Pest Control – The operator shall provide for control of mosquitoes and rodents so as to protect the public health and welfare.

FAC 62-711.540(1)(k), Access to Facility – This facility has direct access to two paved streets, Metro Parkway and Tara Lee Street. These are publicly maintained roadways and will be kept passable at all times.

FAC 62-711.540(2)(a) thru (h) – Not applicable to this facility. There will be no inside storage of waste tires.

FAC 62-711.540(3)(a), Setback from water bodies, Stormwater BMP's – See plan set enclosed in the manual. The waste and used tire storage area is more than 200 feet from the dry detention south of the in-feed conveyor for the shredder. Additionally, the following Best Management Practices (BMP's) techniques are employed in the storm water treatment system:

- Oil Skimmer
- Stormceptor Chamber
- Grassed Outfall Swale
- Outfall Control Structure with additional skimmer

Inspection of these devices will be conducted on a monthly basis. Correction of any malfunctions will be done immediately.

FAC 62-711.540(3)(b), Maximum Storage Area Dimensions – See Sheets 3, 3A, 3B, and 3C of the plan set. The dimensions of the waste and used tire storage area are shown.

FAC 62-711.540(3)(c), Fire Lanes – See Sheets 3, 3A, 3B, and 3C of the plan set. The fire lanes and 50 feet setback areas are shown.

FAC 62-711.540(3)(d), Access Control – See Sheet 2 of the plan set.

FAC 62-711.540(3)(e), Waste Tire Fire Runoff – See response to FAC 62-711.540(3)(a) above.

FAC 62-711.540(3)(f), Maintenance of Grass and Underbrush – See Sheet 2 of the plan set. The entire yard area is paved with 8” of concrete, preventing any growth of grass or underbrush beneath store waste and used tires.

FAC 62-711.540(4), Storage of Processed Waste Tires – Not applicable to this facility. Processed waste tires are removed daily to a landfill as part of the fluff waste.

FAC 62-711.540(5), Containment of Processing Residuals – See Sheet 2A of the plan set. The area beneath the shredder and processing equipment is graded so as to direct all surface runoff into the recovery tank system. These two tanks act as a sediment chamber and a holding area for process water. The process water is recycled into the shredder as cooling and wash water. The residuals from the processing area are captured in this system. The sediment in this system is removed periodically and transported to the landfill along with the fluff waste.

FAC 62-711.540(6)(a), Length of Storage of Waste Tires – Only whole waste tires suitable to be resold as a used tire are stored for periods longer than one month. See description of storage area in Section 2 of this plan.

FAC 62-711.540(6)(b), Fire Department Approval – See fire safety survey letter included in Division 4 of this manual as approval of the storage and blending areas of this facility.

Compliance with the storage requirements of FAC 62-711.540 is assured by the following facts:

1. The facility has controlled access, is gated, and fully attended day and night preventing unauthorized deliveries.
2. The throughput capacity of the Harris mill is substantially greater than the quantity of tires to be stored.
3. Waste tires are currently being processed incidental to the automobile recycling operation and tire storage is not presently a problem.
4. The magnitude of the waste tire facility operation is a very small part of the overall facility operation and is much less likely, economically, to be allowed to become an operational or regulatory problem. And,
5. Processed waste tire are removed shortly after processing and either repurposed or taken to the designated landfill.

VII. A copy of the emergency preparedness manual for the facility with a statement of the on site and off site locations of where that manual will be maintained. (Application Part III.B.6.)

The Emergency Preparedness Manual for the Garden Street Waste Tire Processing Center is included in this manual. The operator should make his self familiar with the recommended steps to follow in the event of an emergency [FAC 62-711.540(1)(e)].

Please note that FDEP is required to be immediately be notified in the event of a fire or other emergency which poses an unanticipated threat to the public health or environment. Within two weeks of the event, a written report must be submitted to FDEP noting the origins of the emergency, actions taken to deal with the emergency, results of actions taken, and an analysis of the success of failure of the actions [FAC 62-711.540(1)(f)].

A copy of this manual will to be kept in the main office of Garden Street Iron and Metal, Inc., two story building located on north side of the facility, near the Tara Lee Entrance. The street address of this building is 3265 Metro Parkway. A second copy of this manual is to be kept in the office of Keene Engineering, Inc., 10 George Town, Fort Myers, Fl. 33919.

VIII. Fire Safety Survey (Application Part III.B.7.)

The Fire Safety Survey is included in this manual. This survey is to be updated annually by the Fort Myers Fire Department. The Fort Myers Fire Department may be contacted at 321-7350. Updates to the fire safety survey should be inserted into this manual for future reference [FAC 62-711.540(1)(d)].

IX. Description of how 75% of the annual accumulation of waste tires will be removed for disposal or recycling. (Application Part III.B.8.)

“FAC 62-711.530(3) - At least 75 percent of the whole tires, used tires, and processed tires that are delivered to or are contained on the site of the waste tire processing facility at the beginning of each calendar year shall be processed and removed for disposal or recycling from the facility during the year, or disposed of on the site at a permitted solid waste management facility...”

All waste tires are processed by shredding into sufficiently small pieces and remain unmixed with other material and are suitable for recycling. The waste is removed from the facility upon processing and recycled. It is expected that virtually 100% of all processed waste tires, on an annual basis, will be removed from the site during each year. It is not expected that there will be an accumulation of waste other than the daily amount generated.

X. Facility Plan Set – Storage Areas

The operator of the waste tire processing facility should familiarize himself with the enclosed facility site plans. These plans depict the designated areas to be used for the storage of used and other waste tires. This plan also depicts the general flow of bulk waste tires received at the facility. Sheets 3, 3A, 3B, 3C and 3D are the most relevant to the operation of the facility. The used and waste tire storage area will be designated with a yellow strip as shown in the plan set.

Special attention should be given to the fire access lanes and clearance surrounding the blending, storage, and fluff areas. These areas have been reviewed and approved by the fire department as part of the fire safety survey. Deviation from these areas may increase the risks of a fire or other emergency. Deviation of the storage area is also a violation of the FDEP approval and may result in enforcement action by FDEP if not corrected. All storage area shall be maintained in accordance with the plan set and in accordance with FAC 62-711.540(3)(a) thru (f). See section VI of this Operation Plan.

Access to the waste tire storage areas shall be maintained free and clear and passable by a motor vehicle at all times [FAC 62-711.540(1)(k)].

XI. Limitations on Total Amount of Used and Waste Tires

This facility has a proposed limit of 16,000 used and waste tires on site. This limit includes used tires. Once this limit has been reached, receipt of waste tires must be halted until the waste tires already on site have been processed by the shredder. Please note that once a tire is removed from a car, truck, or trailer, it now also becomes a waste tire.

XII. Quarterly Reporting to FDEP

Quarterly reporting is required by FAC 62-711.530(5) and FAC 62-711.540(1)(g).

Included in this manual is the quarterly reporting form required by FDEP. See the form for the specific items which are required to be reported. The reporting is to be measured in tons. Tires that are received by the facility which are still attached to a car, truck, or trailer are not yet waste tires. A tire only becomes a waste tire once it has been removed from whatever it was attached to. Used tires that are being held for resale are also considered waste tires.

For the column “Consumed”, the entries should all be zero. No waste tires are consumed on this site. All tires are either processed or removed. For this facility, tires are considered processed once they have been placed into the shredder. Used tires that are being sold are being removed from the site. Used tires sold must be weighed before leaving the site for these reporting purposes.

For estimating the ending inventory of tires in tons, use the following equivalents: one passenger car tire equals 20 pounds in weight and one truck tire equals 100 pounds of weight. Rims are not included in the weights.

For the line “Processed Tires”, this applies to tires that have been process by some means into a shape or size for resale. For the tires that pass through the shredder, they are essentially 100% “processing waste”. In the case of this facility, this waste is indiscernible from the other fluff material and cannot be measured.

XIII. Additional Record Keeping Requirements

In addition to the quarterly reporting requirement above, further record keeping is required by FAC 62-711.530(4). The owner or operator of a waste tire processing facility shall record and maintain for three years the following information regarding their activities, which records shall be available for inspection by Department personnel during normal business hours:

(a) For all waste tires shipped from the facility, the name and waste tire collector registration number of the waste tire collector who accepted the waste tires for transport, and the quantity of waste tires shipped with that collector; and if the waste tires were shipped with a person who is not a waste tire collector, the number of tires shipped, the person’s name, address and telephone number; and the place where the waste tires were deposited;

(b) For all waste tires received at the facility, the name and waste tire collector registration number of the collector who delivered the waste tires to the facility, and the quantity of waste tires received from that collector; and if more than five waste tires were delivered by a person who is not a waste tire collector, the number of tires delivered and the person’s name, address and telephone number; and

(c) For all waste tires removed for recapping, the quantity and type removed, and the name and location of the recapping facility receiving the tires.

XIV. Closing Plan

Included with in Division 6 of this operations manual is the Closing Plan. There are specific steps which are to be followed once the decision has been made to close the waste tire facility (i.e. stop receiving bulk waste tire shipments). Garden Street Iron & Metal Inc. of S.W. Florida has posted financial assurance with the State of Florida (FDEP) to guarantee completion of the closing steps. A copy of this financial assurance document is included in this manual. If the steps in the closing plan are not followed, the bond may not be released by FDEP.

XV. Financial Assurance and Closing Cost Estimate

Refer to the financial assurance document in Division 6 of this manual for any annual modifications or trust reporting that may be required to maintain the financial assurance with the

Florida Department of Environmental Protection. The amount of the assurance is based on the closing cost estimate prepared by a professional engineer. It is required by rule that the closing cost estimate be updated annually. The revised estimate is required to be submitted 60 days prior to the anniversary date of the instrument. [FAC 62-711.500(3)]. The closing cost estimate will likely change each year necessitating a change in the financial assurance document.

XVI. Applicable State Rules

A copy of the State of Florida Administrative (FAC) rules for waste tire processing facilities can be obtained at the FDEP website - <http://www.dep.state.fl.us/waste/>. FAC Section 62-701 contains fees, definitions and other rules applicable to all solid waste facilities (including waste tire processing facilities). FAC Section 62-711 is the waste tire rule. Forms may also be obtained at this web address.

Section 2

Tire Processing Facility FDEP Permit

Insert permit renewal in this section once issued by FDEP



Florida Department of Environmental Protection

South District Office
Post Office Box 2549
Fort Myers, Florida 33902-2549

Rick Scott
Governor

Jennifer Carroll
Lt. Governor

Herschel T. Vinyard Jr.
Secretary

September 22, 2011

FedEx Tracking No. 701698315000482

Garden Street Iron & Metal Inc. of SW Florida
c/o Mr. Rob Weber
3350 Metro Parkway
Fort Myers, Florida 33902

Re: Lee County - SW
Garden Street Iron & Metal (Waste Tire Processing Center)
Modifications to Permit No. 0296251-001-WT/02, WACS ID No. 00098386
Application No. 0296251-002-WT/02

Dear Mr. Weber:

The Department hereby approves the permit modifications requested by Garden Street Iron & Metal Inc. of SW Florida in correspondence (dated August 12, 2011 and received August 15, 2011) to modify the referenced Permit.

The modifications are approved as Permit Modification No. 0296251-002-WT/02. Please attach this letter to Operation Permit No. 0296251-001-WT/02, as it becomes a part of that Permit. All other conditions of the Permit remain unchanged.

The modifications to the existing Specific Conditions [Specific Condition Nos. 5, 6, 16, and 17] and the addition of two (2) new Specific Conditions [Specific Condition Nos. 22 and 23] to the current Permit are as follows:

5. The Permittee shall strictly abide by the storage limit of 16,000 waste tires at any one time on the site and comply with all applicable storage requirements in F.A.C. Rule 62-711.540.
6. The 50 foot x 70 foot waste tire (3,000 tires) and 75 foot x 100 foot processed tires (8,000 tires) storage areas shall be clearly marked. The areas are to be identified as waste tire and processed tire storage only. The blending storage area does not need to be marked. The quantity of waste tires in the blending area should not exceed 5,000 tires at any time. The waste tires shall be kept in one designated area within the blending area. The waste tire designated area within the blending area can be relocated depending on the operational needs of the facility.

Garden Street Iron & Metal (Waste Tire Processing Center)
DEP File No. 0296251-002-WT/02, WACS ID No. 00098386
Operating Permit Substantial Modification
September 22, 2011

16. The Permittee shall keep a copy of the "Revised" Operations and Emergency Preparedness Manuals at the site at all times.

17. **FINANCIAL RESPONSIBILITY:**

a) Financial Assurance Mechanism:

The Permittee shall maintain, in good standing, the financial assurance mechanisms established to demonstrate proof of financial assurance. Support documentation and evidence of inflation adjustment increases within the time frames specified in Rule 62-701.630, F.A.C. All submittals in response to this Specific Condition shall be sent to:

Florida Department of Environmental Protection
Financial Coordinator - Solid Waste Section
2600 Blair Stone Road, Mail Station 4565
Tallahassee, Florida 32399-2400

b) Annual Cost Estimates:

The Permittee shall annually adjust the long-term care cost estimate(s) for inflation using Form 62-701.900(28). Adjustments shall be made in accordance with F.A.C. Rule 62-701.630(4), and, as applicable, 40 CFR Part 264.142(a) and 254.144(a). An owner or operator using a letter of credit, guarantee bond, performance bond, financial test, corporate guarantee, trust fund or insurance shall submit the adjusted cost estimate(s) between January 1 and March 1. An owner or operator using an escrow account shall submit the adjusted estimate(s) between July 1 and September 1. All submittals in response to this Specific Condition shall be sent to:

Florida Department of Environmental Protection
South District Office
Post Office Box 2549
Fort Myers, Florida 33902-2549

With a copy to:

Florida Department of Environmental Protection
Financial Coordinator - Solid Waste Section
2600 Blair Stone Road, Mail Station 4565
Tallahassee, Florida 32399-2400

Garden Street Iron & Metal (Waste Tire Processing Center)
DEP File No. 0296251-002-WT/02, WACS ID No. 00098386
Operating Permit Substantial Modification
September 22, 2011

22. The Permittee shall ensure that the temperature within the above-ground piles of processed tires over ten feet high shall be monitored and that the temperature within the pile does not exceed 300 degrees Fahrenheit in accordance with F.A.C. Rule 62-711.540(4).
23. The Permittee shall submit to the District office an updated Form 62-701.900(5), Financial Mechanisms for Solid Waste Management facilities Requiring Closure and /or Long-term Care, effective date January 6, 2010 adjustment statement of closure cost estimate pursuant to F.A.C. Rule 62-711.500(3) which reflects the increased cost estimate to dispose of the permitted quantity of 16,000 waste tires, as outlined in Section 6 of the Operations Manual, no later than thirty (30) days from the date of this letter permit modification. The Permittee shall submit a copy of the updated closure cost estimate along with a new financial instrument corresponding to the closure cost estimate to: Solid Waste Financial Coordinator, Department of Environmental Protection, 2600 Blair Stone Road, Mail Station 4565, Tallahassee, Florida 32399-2400. **The permittee shall not increase the number of waste tires stored on site until the financial instrument has been approved.**

Should you need further information regarding the substantial modification, please feel free to contact Mr. Albert McLaurin at 239-344-5605 or by e-mail to Albert.McLaurin@dep.state.fl.us.

NOTICE OF RIGHTS

The Department's *Notice of Modification* will be considered final, unless a timely petition for an administrative hearing is filed under Sections 120.569 and 120.57, Florida Statutes (F.S.). The petition must contain the information required by Florida Administrative Code (F.A.C.), Rule 28-106.201 or Rule 28-106.301, and must be filed (received) within fourteen (14) days of receipt of this written notice in the Office of General Counsel of the Department at 3900 Commonwealth Boulevard, Mail Station 35, Tallahassee, Florida 32399-3000. A copy of F.A.C., Chapter 28-106 can be found at:

<http://fac.dos.state.fl.us>

Mediation is not available in this proceeding.


Any party to this order has the right to seek judicial review of it under Section 120.68, F.S., by filing a notice of appeal under Rule 9.110, Florida Rules of Appellate Procedure, with the clerk of the Department in the Office of General Counsel, Mail Station 35, 3900 Commonwealth Boulevard, Tallahassee, Florida 32399-3000, and by filing a copy of the notice of appeal accompanied by the applicable filing fees with the appropriate district

Garden Street Iron & Metal (Waste Tire Processing Center)
DEP File No. 0296251-002-WT/02, WACS ID No. 00098386
Operating Permit Substantial Modification
September 22, 2011

court of appeal. The notice of appeal must be filed within thirty (30) days after this order is filed with the clerk of the Department.

Executed in Lee County, Florida.

STATE OF FLORIDA DEPARTMENT
OF ENVIRONMENTAL PROTECTION



Jon M. Iglehart
Director of District Management

CERTIFICATE OF SERVICE

The undersigned duly designated deputy agency Clerk hereby certifies that this NOTICE OF PERMIT MODIFICATION ISSUANCE and all copies were mailed before the close of business on **September 22, 2011**, to the listed persons.

FILING AND ACKNOWLEDGMENT

FILED, on this date, under Section 120.52(7), Florida Statutes, with the designated Department Clerk, receipt of which is hereby acknowledged.



(Clerk)

09-22-2011

(Date)

Attachment
JMI/ADM/se

Copies furnished to:

William T. Keene, P.E., Keene Engineering, Inc. tim@keenefl.com
Charles Emery, DEP charles.emery@dep.state.fl.us
Albert D. McLaurin, DEP albert.mclaurin@dep.state.fl.us
Bill Krumbholz, DEP bill.krumbholz@dep.state.fl.us
Jay Standiford, DEP james.standiford@dep.state.fl.us



Florida Department of Environmental Protection

South District
P.O. Box 2549
Fort Myers, FL 33902-2549

Charlie Crist
Governor

Jeff Kottkamp
Lt. Governor

Michael W. Sole
Secretary

STATE OF FLORIDA DEPARTMENT OF ENVIRONMENTAL PROTECTION NOTICE OF PERMIT



CERTIFIED MAIL NO. 7008 0500 0000 7774 1796
RETURN RECEIPT REQUESTED

In the matter of an
Application for Permit by:

Garden Street Iron & Metal Inc. of S.W. Florida
c/o Mr. Rob Weber
3350 Metro Parkway
Fort Myers, Florida 33902

Re: Lee County - SW
Garden Street Iron & Metal
(Waste Tire Processing Center)
DEP File No. 0296251-001-WT/02
WACS ID No. 00098386

Enclosed is Permit No. 0296251-001-WT/02 to construct and operate a Waste Tire Processing Facility, specifically identified as Garden Street Iron & Metal (Waste Tire Processing Center), located at 3350 Metro Parkway, Fort Myers, Lee County, Florida issued under Sections 403.061, 403.087 and 403.707 of the Florida Statutes (F.S.) and Florida Administrative Code (F.A.C.) Rules 62-4, 62-160, 62-302, 62-522, 62-701 and 62-711.

Any party to this order (permit), other than those who expressly waived this right has the right to seek judicial review of the permit under Section 120.68 of the Florida Statutes, by the filing of a notice of appeal under Rule 9.110 of the Florida Rules of Appellate Procedure, with the Clerk of the Department in the office of General Counsel, 3900 Commonwealth Boulevard, Mail Station 35, Tallahassee, Florida 32399-3000 and by filing a copy of the notice of appeal accompanied by the applicable filing fees with the appropriate district court of appeal. The notice of appeal must be filed within thirty (30) days after this notice is filed with the Clerk of the Department.

Garden Street Iron & Metal Inc. of S.W. Florida
c/o Mr. Rob Weber
Permit/Certification No. 0296251-001-WT/02
WACS ID No. 00098386
Page 2

Executed in Lee County, Florida.

STATE OF FLORIDA DEPARTMENT
OF ENVIRONMENTAL PROTECTION

Jon M. Iglehart
Director of
District Management

CERTIFICATE OF SERVICE

The undersigned duly designated deputy agency Clerk hereby certifies that this NOTICE OF PERMIT ISSUANCE and all copies were mailed before the close of business on December 9, 2009, to the listed persons.

FILING AND ACKNOWLEDGMENT

FILED, on this date, under Section 120.52(7), Florida Statutes, with the designated Department Clerk, receipt of which is hereby acknowledged.

(Clerk)

12-09-2009

(Date)

Enclosure
JMI/GAM/se

- c: Honorable Randy Henderson Jr., Mayor of Fort Myers (mayorhenderson@cityftmyers.com)
William T. Keene, P.E., Keene Eng., Inc. (tim@keenefl.com)
Richard Tedder, DEP (richard.tedder@dep.state.fl.us)
Chris McGuire, OGC DEP (chris.mcguire@dep.state.fl.us)
Jack Chisolm, OGC DEP (jack.chisolm@dep.state.fl.us)
Bill Krumbholz, DEP (bill.krumbholz@dep.state.fl.us)
Mel Reinhart, DEP (mel.reinhart@dep.state.fl.us)



Florida Department of Environmental Protection

South District
P.O. Box 2549
Fort Myers, Florida 33902-2549

Charlie Crist
Governor

Jeff Kottkamp
Lt. Governor

Michael W. Sole
Secretary



PERMITTEE:

Garden Street Iron & Metal Inc. of S.W. Florida
c/o Mr. Rob Weber
3350 Metro Parkway
Fort Myers, Florida 33902

WACS ID No. 00098386
Permit/Certification No. 0296251-001-WT/02
Date of Issue: December 9, 2009
Expiration Date: December 9, 2014
County: Lee
Latitude: 26° 37' 4.4"
Longitude: 81° 51' 13.8"
Section/Township/Range: 30/44S/25E
Project: Garden Street Iron & Metal
(Waste Tire Processing Center)

This Permit is issued pursuant to Sections 403.061, 403.087 and 403.707, Florida Statutes (F.S.), and Florida Administrative Code (F.A.C.) Rules 62-4, 62-160, 62-302, 62-522, 62-701, and 62-711. The above-named Permittee is hereby authorized to perform the work or operate the facility shown on the application and approved drawing(s), plans, and other documents attached hereto or on file with the Department and made a part hereof and specifically described as follows:

To construct and operate a Waste Tire Processing Facility, specifically identified as Garden Street Iron & Metal (Waste Tire Processing Center), located at 3350 Metro Parkway, Fort Myers, Lee County, Florida.

The Permit is subject to the following fifteen (15) General and twenty-one (21) Specific Conditions. An approved copy of the application package is enclosed for your records.

1. The terms, conditions, requirements, limitations, and restrictions set forth in this Permit are "permit conditions" and are binding and enforceable pursuant to Sections 403.141, 403.727, or 403.859 through 403.861, F.S. The Permittee is placed on notice that the Department will review this Permit periodically and may initiate enforcement action for any violation of these conditions.

"More Protection, Less Process"
www.dep.state.fl.us

PERMITTEE:
Garden Street Iron & Metal Inc. of
S.W. Florida
c/o Rob Weber

WACS ID No. 00098386
Permit/Certification No. 0296251-001-WT/02
Date of Issue: December 9, 2009
Expiration Date: December 9, 2014

GENERAL CONDITIONS:

2. This Permit is valid only for the specific processes and operations applied for and indicated in the approved drawings or exhibits. Any unauthorized deviation from the approved drawings, exhibits, specifications, or conditions of this Permit may constitute grounds for revocation and enforcement action by the Department.
3. As provided in Subsections 403.087(6) and 403.722(5) F.S., the issuance of this Permit does not convey any vested rights or any exclusive privileges. Neither does it authorize any injury to public or private property or any invasion of personal rights, nor any infringement of federal, state or local laws or regulations. This Permit is not a waiver of or approval of any other Department permit that may be required for other aspects of the total project which are not addressed in the Permit.
4. This Permit conveys no title to land or water, does not constitute State recognition or acknowledgement of title, and does not constitute authority for the use of submerged lands unless herein provided and the necessary title or leasehold interests have been obtained from the State. Only the Trustees of the Internal Improvement Trust Fund may express State opinion as to title.
5. This Permit does not relieve the Permittee from liability for harm or injury to human health or welfare, animal or plant life, or property caused by the construction or operation of this permitted source or from penalties therefore; nor does it allow the Permittee to cause pollution in contravention of Florida Statutes and Department rules, unless specifically authorized by any order from the Department.
6. Permittee shall properly operate and maintain the facility and systems of treatment and control (and related appurtenances) that are installed and used by the Permittee to achieve compliance with the conditions of this Permit, as required by Department rules. This provision includes the operation of backup or auxiliary facilities or similar systems when necessary to achieve compliance with the conditions of the Permit and when required by Department rules.

PERMITTEE:
Garden Street Iron & Metal Inc. of
S.W. Florida
c/o Rob Weber

WACS ID No. 00098386
Permit/Certification No. 0296251-001-WT/02
Date of Issue: December 9, 2009
Expiration Date: December 9, 2014

GENERAL CONDITIONS:

7. The Permittee, by accepting this Permit, specifically agrees to allow authorized Department personnel, upon presentation of credential or other documents as may be required by law, and at reasonable times, access to the premises where the permitted activity is located or conducted to:

- (a) Have access to and copy any records that must be kept under the conditions of the Permit;
- (b) Inspect the facility, equipment, practices, or operations regulated or required under this Permit; and
- (c) Sample or monitor any substances or parameters at any location reasonably necessary to assure compliance with this Permit or Department rules.

Reasonable time may depend on the nature of the concern being investigated.

8. If, for any reason the Permittee does not comply with or will be unable to comply with any condition or limitation specified in this Permit, the Permittee shall immediately provide the Department with the following information:

- (a) A description of and cause of noncompliance; and
- (b) The period of noncompliance, including dates and times; or, if not corrected, the anticipated time the noncompliance is expected to continue, and steps being taken to reduce, eliminate, and prevent recurrence of the noncompliance. The Permittee shall be responsible for any and all damages which may result and may be subject to enforcement action by the Department for penalties or revocation of this Permit.

9. In accepting this Permit, the Permittee understands and agrees that all records, notes, monitoring data and other information relating to the construction or operation of this permitted source, which are submitted to the Department, may be used by the Department as evidence in any enforcement case involving the

PERMITTEE:
Garden Street Iron & Metal Inc. of
S.W. Florida
c/o Rob Weber

WACS ID No. 00098386
Permit/Certification No. 0296251-001-WT/02
Date of Issue: December 9, 2009
Expiration Date: December 9, 2014

GENERAL CONDITIONS:

permitted source arising under the Florida Statutes or Department rules, except where such use is prescribed by Sections 403.111 and 403.73, F.S. Such evidence shall only be used to the extent it is consistent with the Florida Rules of Civil Procedure and appropriate evidentiary rules.

10. The Permittee agrees to comply with changes in Department rules and Florida Statutes after a reasonable time for compliance, provided, however, the Permittee does not waive any other rights granted by Florida Statutes or Department rules. A reasonable time for compliance with a new or amended surface water quality standard, other than those standards addressed in Rule 62-302.500, F.A.C, shall include a reasonable time to obtain or be denied a mixing zone for the new or amended standard.
11. This Permit is transferable only upon Department approval in accordance with Rules 62-4.120 and 62-730.300, F.A.C, as applicable. The Permittee shall be liable for any noncompliance of the permitted activity until the transfer is approved by the Department.
12. This Permit or a copy thereof shall be kept at the work site of the permitted activity.
13. This Permit also constitutes:
 - (a) Determination of Best Available Control Technology (BACT)
 - (b) Determination of Prevention of Significant Deterioration (PSD)
 - (c) Certification of compliance with State Water Quality Standards (Section 401, PL 92-500)
 - (d) Compliance with New Source Performance Standards
14. The Permittee shall comply with the following:
 - (a) Upon request, the Permittee shall furnish all records and plans required under Department rules. During enforcement actions, the retention

PERMITTEE:

Garden Street Iron & Metal Inc. of
S.W. Florida
c/o Rob Weber

WACS ID No. 00098386

Permit/Certification No. 0296251-001-WT/02

Date of Issue: December 9, 2009

Expiration Date: December 9, 2014

GENERAL CONDITIONS:

period for all records will be extended automatically, unless otherwise stipulated by the Department.

- (b) The Permittee shall hold at the facility or other location designated by this Permit, records of all monitoring information (including all calibration and maintenance records and all original strip chart recordings for continuous monitoring instrumentation) required by this Permit, copies of all reports required by this Permit, and records of all data used to complete the application for this Permit.
 - (c) Records of monitoring information shall include:
 - 1. the date, exact place, and time of sampling or measurements;
 - 2. the person responsible for performing the sampling or measurements;
 - 3. the dates analyses were performed;
 - 4. the person responsible for performing the analyses;
 - 5. the analytical techniques or methods used;
 - 6. the results of such analyses.
15. When requested by the Department, the Permittee shall, within a reasonable time, furnish any information required by law, which is needed to determine compliance with the Permit. If the Permittee becomes aware the relevant facts were not submitted or were incorrect in the Permit application or in any report to the Department, such facts or information shall be corrected promptly.

SPECIFIC CONDITIONS:

- 1. This Permit is valid for construction/operation of a Waste Tire Processing Facility with all applicable requirements of Florida Administrative Code (F.A.C.) Rule 62-711.

PERMITTEE:

Garden Street Iron & Metal Inc.
of S.W. Florida
c/o Rob Weber

WACS ID No. 00098386

Permit/Certification No. 0296251-001-WT/02

Date of Issue: December 9, 2009

Expiration Date: December 9, 2014

SPECIFIC CONDITIONS:

2. Appropriate signs indicating name of the facility, operating hours, cost of disposal, site rules and other pertinent information shall be posted at the entrance to the inbound truck scale of the site.
3. An attendant shall be present on the site when the facility is open for business.
4. All used tires, waste tires, processed tires and residues handled at the facility shall be stored in a manner so as not to constitute a fire or safety hazard or a sanitary nuisance, and shall comply with all applicable local and state regulations. Materials, recovered/processed by the facility which may be offered for sale shall comply with applicable regulations of all appropriate local and state agencies.
5. The Permittee shall strictly abide by the storage limit of 8,000 waste tires at any one time on the site and comply with all applicable storage requirements in F.A.C. Rule 62-711.540.
6. The 50 foot x 140 foot waste tire storage area shall be clearly marked. The area is to be identified as waste tire storage only. The blending storage area does not need to be marked. The quantity of tires in the blending area should not exceed 3,500 tires at any time.
7. The Permittee, at least once a year, shall remove at least 75 percent of the whole and used tires from the site for recycling, processing, or disposal.
8. The Permittee shall record and maintain information regarding the facility's activities, in compliance with F.A.C. Rule 62-711.530(4), which shall be available for inspection by Department personnel during normal business hours. Quarterly reports on Form 62-701.900(21), summarizing this information shall be submitted by the 20th of the month following the close of each calendar quarter in accordance with F.A.C. Rule 62-711.530(5). The report shall include the following information:
 - (a) For all waste tires shipped from the facility, the name and waste tire collector registration number of the waste tire collector who accepted the waste tires for transport, and the quantity of waste tires were shipped

PERMITTEE:

Garden Street Iron & Metal Inc.
of S.W. Florida
c/o Rob Weber

WACS ID No. 00098386

Permit/Certification No. 0296251-001-WT/02

Date of Issue: December 9, 2009

Expiration Date: December 9, 2014

SPECIFIC CONDITIONS:

with that collector; and if the waste tires were shipped, the number of tires shipped, the person's name, address and telephone number; and the place where the waste tires were deposited.

- (b) For all waste tires received at the facility, the name and waste tire collector registration number of the collector who delivered the waste tires to the facility, and the quantity of waste tires received from the collector; and if more than five waste tires are delivered by a person who is not a waste tire collector, the number of tires delivered and the person's name, address and telephone number; and
- (c) For all waste tires removed for recapping, the quantity and type removed, and the name and location of the recapping facility receiving the tires.

The report to be submitted to the Department on Form 62-701.900(21), in addition to the information required above, shall include the following:

- (a) The facility name, address and permit number;
 - (b) The quarter covered by the report;
 - (c) The total quantity (by category) of waste tires received at the facility during the quarter covered by the report;
 - (d) The total quantity (by category) of waste tires shipped from the facility during the quarter covered by the report;
 - (e) The total quantity of waste tires processed during the quarter;
 - (f) The total quantity (by category) of waste tires located at the facility on the last day of the quarter; and
 - (g) A list of all dates on which one or more category of waste tires exceeded the storage limit, which category was in excess, and how this condition was relieved or will be relieved.
9. The Permittee shall maintain records of the quantity of waste tires received at the site, stored at the site and shipped from the site in accordance with F.A.C. Rule 62-711.540(1)(g), which shall be available for inspection by Department personnel during normal business hours.

Section 3

Emergency Preparedness Manual

EMERGENCY PREPAREDNESS MANUAL For Waste Tire Processing and Storage

**Facility: GARDEN STREET IRON & METAL
(WASTE TIRE PROCESSING CENTER)
WACS ID NO. 000098386**

**Location: 3350 METRO PARKWAY
FORT MYERS, FLORIDA 33916**

**Applicant: GARDEN STREET IRON & METAL INC. OF S.W. FLORIDA
ROB WEBER, PRESIDENT**

**Submitted to: FLORIDA DEPARTMENT OF ENVIRONMENTAL PROTECTION
PO BOX 2549
FORT MYERS, FLORIDA 33902-2549**

**Prepared by: KEENE ENGINEERING, INC.
PO BOX 2770
FORT MYERS, FLORIDA 33902**

Date: November 25, 2014

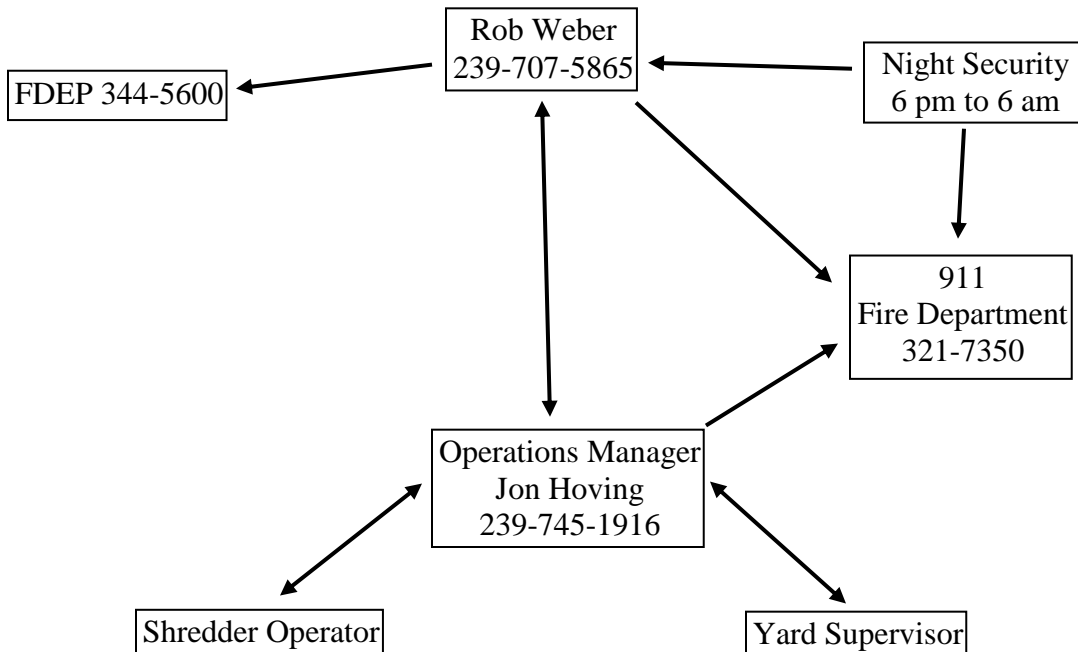
I. Purpose – this manual is intended to satisfy the requirements of FAC Chapter 62-711.540(1)(e) for emergency preparedness relative to the storage and processing of waste and used tire and their residuals.

II. Emergency Contacts [FAC 62-711.540(1)(e)1.] – the following entities are to be contacted in the case of a fire or other hazardous emergency relative to the waste tire storage facility:

Emergency Dispatchers	Dial 911
City of Fort Myers Fire Department	239-321-7350
Florida Department of Environmental Protection	239-344-5600
Robert Weber	239-707-5865
Jon Hoving	239-745-1916

III. Emergency Response Team [FAC 62.711-540(1)(e)3.] – The following flow chart shall be followed for emergency response. The response team will first determine the extent of the emergency, fire or medical, and make contact with the appropriate agency. The first responders on the site are generally the shredder operator due to his location in the control booth or the yard supervisor. Generally, all moving conveyors are equipped with emergency pull cords or push buttons (E-Stops). If an E-Stop is activated, the computer operating the shredder follows a pre-programmed shut down routine. The shredder operator’s display indicates which E-Stop has been pulled. This will facilitate a quick response to the emergency.

Also note that this facility has night time security and video surveillance.



IV. Emergency Response Equipment [FAC 62-711.540(1)(e) 2.] – In the case of fire, CALL 911. The enclosed site plan depicted the locations of the existing fire hydrants within the Garden Street facility. In addition to on-site fire hydrants, there is a fire stand pipe and hose located near the southwest corner of the main two story office building on the north side of the facility. This is near the west end of the incoming scale ramp. This fire hose is useful in the initial response to a fire in the final waste (fluff) bunker.

In the case of the blending and tire storage areas, there are typically two types of large equipment in this vicinity, a large grapple crane and a large solid tire front end loader. These two pieces of equipment are capable of being used in the initial moments of a fire to pull smoldering or flamed portions of stored material away from the remainder of the pile. This helps to minimize the potential of the fire to escalate into a larger event. The fire department will provide response to a fire in these areas as well.

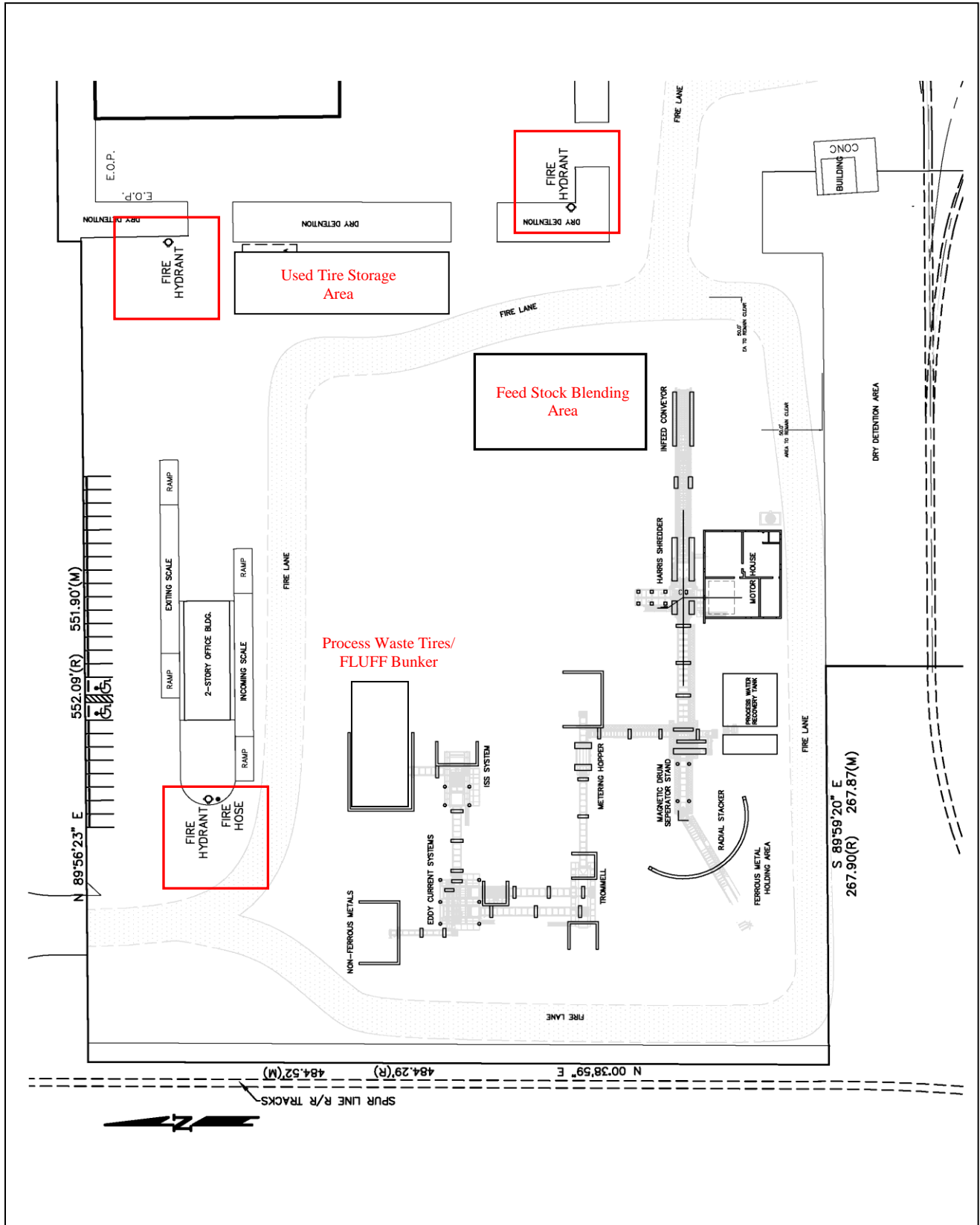
V. Clean-up procedure [FAC 62.711-540(1)(e)3.] – Fluff Bunker – In the case of a fire in the fluff bunker, there will likely be little material to clean up. Typically the burning or burnt material is spread on the existing concrete yard area immediately in front of the bunker to completely douse the fire. Once extinguished and cooled, the material is put back into the bunker to await disposal. The typical equipment used in this process is a front end loader and bobcat type skid steer loader. There is no expected clean-up from a flood of the fluff bunker as is presently at or above the 100 year flood elevation.

VI. Clean-up procedure [FAC 62.711-540(1)(e)3.] – Waste tire storage areas – In the case of fire in the waste tire storage and staging areas, the first order of business is to surround the tire pile with processed ferrous material along its southerly side, essentially building a dam around the pile. See section X for an illustration of this arrangement. This will prevent the burnt material from flowing into the storm water dry detention area. Once extinguished and cooled, the burnt water tire materials are to be process through the shredder facility mixed with other waste material ordinarily shredded. The residuals of the waste tire will be deposited into the fluff bunker for final disposal.

VII. Copies of this manual [FAC 62.711-540(1)(e)] – A copy of this manual is to be kept in the main office of Garden Street Iron and Metal, Inc., two story building located on north side of the facility, near the Tara Lee Entrance. The street address of this building is 3265 Metro Parkway. A second copy of this manual is to be kept in the office of Keene Engineering, Inc., 10 George Town, Fort Myers, Fl. 33919.

VIII. Manual Updates [FAC 62.711.540(1)(e)] – This manual must be updated once a year and upon any changes in operations at the facility.

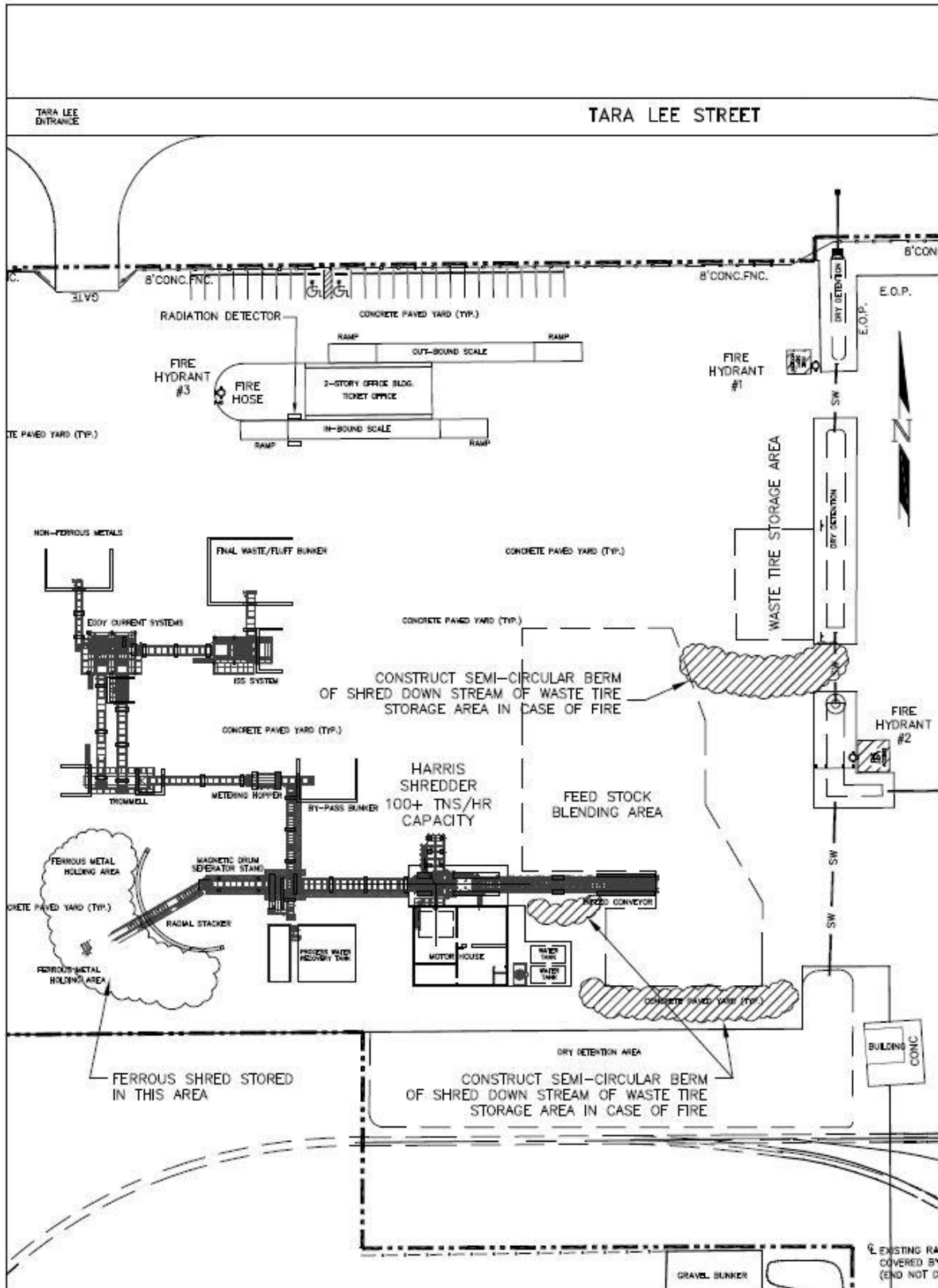
IX. Waste Tire Processing Facility Site Plan



November 25, 2014

Garden Street Iron and Metal Waste Tire Processing Center
Emergency Preparedness Manual

X. Illustration for Fire Runoff Containment



November 25, 2014

Garden Street Iron and Metal Waste Tire Processing Center
Emergency Preparedness Manual

Section 4

Fire Safety Survey



**FORT MYERS FIRE DEPARTMENT
FIRE PREVENTION BUREAU**

1825 Hendry Street, Suite 101
Fort Myers, FL 33901
239.321.7350 tel
239.344.5913 fax
www.fortmyersfire.com



November 18, 2014

FDEP South District Office
ATTN: Nolin Moon
2295 Victoria Avenue – Suite 364
Fort Myers, FL 33901

**RE: Fire Safety Survey
Garden Street Tire Processing Facility**

Mr. Moon:

Recently a walk through was conducted of the tire processing facility at Garden Street as required for the FDEP application. During this walk through the following was reviewed:

1. Fire hydrants
2. Fire system operations as it relates to fire sprinkler and fire alarm
3. Fire department access/accessibility

At this time all systems are in place and operational, as originally installed and designed. If you have any further questions, please contact my office.

Yours in fire safety,

Jennifer Campbell, Fire Marshal
Fort Myers Fire Department
Fire Prevention Bureau

Section 5

Quarterly Reporting Form



Department of Environmental Protection

Bob Martinez Center
2800 Blair Stone Road
Tallahassee, Florida 32309-2400

DEP Form # 62-701.900(21)
 Form Title: Waste Tire Processing Facility Quarterly Report
 Effective Date: January 6, 2010
 DEP Application No. _____
 (Completed by DEP)

WASTE TIRE PROCESSING FACILITY QUARTERLY REPORT

COPY

Pursuant to Rule 62-711.530, Florida Administrative Code, the owner or operator of a waste tire processing facility shall submit the following information to the Department quarterly.

Quarter covered by this report 4th quarter 2009 (First quarter begins on January 1 of any given year)

- Facility name: Garden Street Iron + Metal of S.W. Florida
- Facility mailing address: 3350 Metro Pkwy
 City: Ft Myers County: Lee Zip: 33916
- Facility permit number: 0296251-001-WT/02
- Facility telephone number: (239) 337-5865
- Authorized person preparing report: John Hoving
- Affiliation with facility: Op. Manager
- Telephone number (if different from above): ()
- Activity: Report in tons

	Beginning Inventory	Received	Processed	Consumed	Removed	Adjustments	Ending Inventory
Used Tires		30.53	30.53				-0-
Other whole Tires							
Processed tires							
Processing Waste							
Other							
Total							

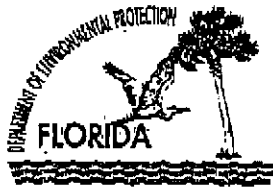
- Explain all inventory adjustments.
- List any period in which one or more category of inventory exceeded the permitted maximum for that category. How was that condition relieved?
 For any excess inventory at the end of the quarter, state how and when this condition will be relieved. Attach Additional sheets, if necessary.

9. Certification:
 To the best of my knowledge and belief, I certify the information provided in this report is true, accurate, and complete.

John Hoving [Signature] 3-5-10
 Print Name of Authorized Agent Signature of Authorized Agent Date

Mail completed form to the appropriate District office listed below

Northwest District: 160 Government Center, Panama City, FL 32501-9794, 850-503-8380
 Northeast District: 7825 Baymeadows Way, Ste. 200 B, Jacksonville, FL 32256-7880, 904-807-3300
 Central District: 3318 McGuire Blvd., Ste. 232, Orlando, FL 32809-3767, 407-894-7595
 Southwest District: 13051 N. Telecom Pky., Tampa Terrace, FL, 813-632-7000
 South District: 2295 Victoria Ave., Ste. 364, Fort Myers, FL 33902-2549, 239-332-8878
 Southeast District: 400 North Congress Ave., West Palm Beach, FL 33401, 601-681-6600



Department of Environmental Protection

Bob Martinez Center
2600 Blair Stone Road
Tallahassee, Florida 32399-2400

DEP Form # 62-701.900(21)
Form Title: Waste Tire Processing Facility Quarterly Report
Effective Date: January 6, 2010
DEP Application No. _____ (Completed by DEP)

WASTE TIRE PROCESSING FACILITY QUARTERLY REPORT

Pursuant to Rule 62-711.530, Florida Administrative Code, the owner or operator of a waste tire processing facility shall submit the following information to the Department quarterly.

Quarter covered by this report 1-1-10 to 3-31-10 (First quarter begins on January 1 of any given year)

- Facility name: Garden Street Iron & Metal, Inc
- Facility mailing address: 3350 Metric Pkwy
City: Fort Myers County: Lee Zip: FL
- Facility permit number: WACS # 0009E386
- Facility telephone number: (239) 337-5865
- Authorized person preparing report: John Hoving
- Affiliation with facility: manager
- Telephone number (if different from above): ()
- Activity: Report in tons

	Beginning Inventory	Received	Processed	Consumed	Removed	Adjustments	Ending Inventory
Used Tires	0	267	267				-0-
Other whole Tires							
Processed tires							
Processing Waste							
Other							
Total							

- Explain all inventory adjustments.
- List any period in which one or more category of inventory exceeded the permitted maximum for that category. How was that condition relieved?

For any excess inventory at the end of the quarter, state how and when this condition will be relieved. Attach Additional sheets, if necessary.

9. Certification:

To the best of my knowledge and belief, I certify the information provided in this report is true, accurate, and complete.

John Hoving
Print Name of Authorized Agent

John Hoving
Signature of Authorized Agent

4-14-10
Date

Mail completed form to the appropriate District office listed below

Northwest District
160 Government Center
Pensacola, FL 32501-5794
850-585-6380

Northeast District
7826 Baymeadows Way, Ste. 200 B
Jacksonville, FL 32256-7590
904-807-3300

Central District
3315 Maguire Blvd., Ste. 232
Orlando, FL 32803-9787
407-694-7555

Southwest District
13061 N. Telecom Pkwy.
Tempe Terrace, FL
813-632-7000

South District
2295 Victoria Ave., Ste. 364
Fort Myers, FL 33907-2549
239-532-6878

Southeast District
400 North Congress Ave.
West Palm Beach, FL 33401
561-881-8800



Department of Environmental Protection

Bob Martinez Center
2600 Blair Stone Road
Tallahassee, Florida 32399-2400

DEP Form # 62-701.900(21)

Form Title: Waste Tire Processing Facility Quarterly Report

Effective Date: January 6, 2010

DEP Application No. _____
(Completed by DEP)

WASTE TIRE PROCESSING FACILITY QUARTERLY REPORT

Pursuant to Rule 62-711.530, Florida Administrative Code, the owner or operator of a waste tire processing facility shall submit the following information to the Department quarterly.

Quarter covered by this report 2nd quarter 4-1-2010 to 6-30-2010 (First quarter begins on January 1 of any given year)

- Facility name: Garden Street Iron + Metal, Inc.
- Facility mailing address: 3350 Metco Pkwy
City: Ft Myers County: Lee Zip: 33916
- Facility permit number: WACS # 00098386
- Facility telephone number: (239) 337-5865
- Authorized person preparing report: John Having
- Affiliation with facility: manager
- Telephone number (if different from above): ()
- Activity: Report in tons

	Beginning Inventory	Received	Processed	Consumed	Removed	Adjustments	Ending Inventory
Used Tires							
Other whole Tires	0	630	630				-0-
Processed tires							
Processing Waste							
Other							
Total		630	630				-0-

- Explain all inventory adjustments. _____
- List any period in which one or more category of inventory exceeded the permitted maximum for that category. How was that condition relieved? _____

For any excess inventory at the end of the quarter, state how and when this condition will be relieved. Attach Additional sheets, if necessary.

9. Certification:

To the best of my knowledge and belief, I certify the information provided in this report is true, accurate, and complete.

John Having Print Name of Authorized Agent John Having Signature of Authorized Agent 10-21-10 Date

Mail completed form to the appropriate District office listed below

Northwest District
150 Government Center
Panama, FL 32601-8794
850-895-8390

Northeast District
7825 Baymeadows Way, Ste. 200 B
Jacksonville, FL 32256-7500
904-807-3300

Central District
3319 Maguire Blvd., Ste. 232
Orlando, FL 32803-3787
407-894-7655

Southwest District
13051 N. Tolocum Pky.
Tampa Terrace, FL
813-632-7800

South District
2205 Victoria Ave., Ste. 364
Fort Myers, FL 33902-2648
239-332-8975

Southeast District
400 North Congress Ave.
West Palm Beach, FL 33401
561-681-8800



Department of Environmental Protection

Bob Martinez Center
2800 Blair Stone Road
Tallahassee, Florida 32399-2400

DEP Form # 62-761.906(21)
Form Title: Waste Tire Processing Facility Quarterly Report
Effective Date: January 6, 2010
DEP Application No. _____ (Completed by DEP)

WASTE TIRE PROCESSING FACILITY QUARTERLY REPORT

Pursuant to Rule 62-711.530, Florida Administrative Code, the owner or operator of a waste tire processing facility shall submit the following information to the Department quarterly.

Quarter covered by this report 3rd (7-9)-2010 (First quarter begins on January 1 of any given year)

- Facility name: Garden Street Iron & Metal, Inc.
- Facility mailing address: 3350 Metro Pkwy
City: Ft Myer County: Lee Zip: 33916
- Facility permit number: WACS # 00098386
- Facility telephone number: (239) 337-5865
- Authorized person preparing report: John Hoving
- Affiliation with facility: manager
- Telephone number (if different from above): ()
- Activity: Report in tons

	Beginning Inventory	Received	Processed	Consumed	Removed	Adjustment	Ending Inventory
Used Tires							
Other whole Tires	0	932	932				0
Processed tires							
Processing Waste							
Other							
Total		932	932				0

- Explain all Inventory adjustments. _____
- List any period in which one or more category of inventory exceeded the permitted maximum for that category. How was that condition relieved?

For any excess inventory at the end of the quarter, state how and when this condition will be relieved. Attach Additional sheets, if necessary.

9. Certification:

To the best of my knowledge and belief, I certify the information provided in this report is true, accurate, and complete.

John Hoving
Print Name of Authorized Agent

John Hoving
Signature of Authorized Agent

10-21-10
Date

Mail completed form to
the appropriate District office
listed below

Northwest District
180 Government Center
Panama City, FL 32301-8794
850-895-8300

Northeast District
7825 Baysmeadows Way, Ste. 200 B
Jacksonville, FL 32256-7560
904-807-3300

Central District
3310 Maguire Blvd., Ste. 202
Orlando, FL 32803-3767
407-894-7693

Southwest District
13051 N. Telecom Pky.
Tempe Terrace, FL
813-832-7600

South District
2295 Victoria Ave., Ste. 304
Fort Myers, FL 33902-2649
239-332-6675

Southeast District
400 North Congress Ave.
West Palm Beach, FL 33401
561-881-8600



Department of Environmental Protection

Bob Martinez Center
2800 Blair Stone Road
Tallahassee, Florida 32399-2400

DEP Form # 62-701.900(21)
Form Title: Waste Tire Processing Facility Quarterly Report
Revision Date: January 4, 2010
DEP Application No. (Completed by DEP)

WASTE TIRE PROCESSING FACILITY QUARTERLY REPORT

Pursuant to Rule 62-711.530, Florida Administrative Code, the owner or operator of a waste tire processing facility shall submit the following information to the Department quarterly.

Quarter covered by this report 4th Q - Nov - Dec 2010 (First quarter begins on January 1 of any given year)

- 1. Facility name: Garden Street Iron + Metal Inc.
2. Facility mailing address: 3350 Metro Pkwy
City: Fort Myers County: FL - Lee - Zip: 33916
3. Facility permit number: WACS 00098386
4. Facility telephone number (239) 337-5865
5. Authorized person preparing report: John Having
6. Affiliation with facility:
7. Telephone number (if different from above):
8. Activity: Report in tons

Table with 8 columns: Beginning Inventory, Received, Processed, Consumed, Removed, Adjustments, Ending Inventory. Rows include Used Tires, Other whole Tires, Processed tires, Processing Waste, Other, Total.

- a. Explain all inventory adjustments.
b. List any period in which one or more category of inventory exceeded the permitted maximum for that category. How was that condition relieved?

For any excess inventory at the end of the quarter, state how and when this condition will be relieved. Attach Additional sheets, if necessary.

9. Certification:

To the best of my knowledge and belief, I certify the information provided in this report is true, accurate, and complete.

John Having
Print Name of Authorized Agent

John Having
Signature of Authorized Agent

2-3-11
Date

Mail completed form to the appropriate District office listed below

Northwest District
150 Government Center
Panama City, FL 32301-5794
850-609-8360

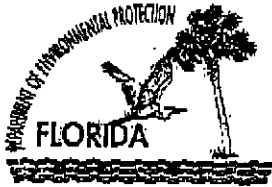
Northeast District
7825 Baymeadows Way, Ste. 200 B
Jacksonville, FL 32256-7590
904-807-3300

Central District
3319 Mcquire Blvd., Ste. 232
Orlando, FL 32803-3787
407-894-7855

Southwest District
13051 N. Telecom Pky.
Tempe Terrace, FL
813-832-7000

South District
2295 Victoria Ave., Ste. 364
Fort Myers, FL 33902-2649
239-332-8075

Southeast District
400 North Congress Ave.
West Palm Beach, FL 33401
888-681-9600



Department of Environmental Protection

Bob Martinez Center
2900 Blair Stone Road
Tallahassee, Florida 32399-2400

DEP Form # 62-701.000(1)
Form Title: Waste Tire Processing Facility Quarterly Report
Effective Date: January 6, 2010
DEP Application No. _____ (Completed by DEP)

WASTE TIRE PROCESSING FACILITY QUARTERLY REPORT

Pursuant to Rule 62-711.530, Florida Administrative Code, the owner or operator of a waste tire processing facility shall submit the following information to the Department quarterly.

Quarter covered by this report 1st - 2011 (First quarter begins on January 1 of any given year)

- Facility name: Garden Street Iron & Metal, Inc.
- Facility mailing address: 3350 Metro Pkwy
City: Fort Myers County: Lee Zip: 33916
- Facility permit number: WACS 00098386
- Facility telephone number: (234) 337-5865
- Authorized person preparing report: John Horning
- Affiliation with facility: manag.
- Telephone number (if different from above): ()
- Activity: Report in tons

	Beginning Inventory	Received	Processed	Consumed	Removed	Adjustments	Ending Inventory
Used Tires							
Other whole Tires	0	850.71	850.71				0
Processed tires							
Processing Waste							
Other							
Total		850.71	850.71				0

- Explain all inventory adjustments. _____
- List any period in which one or more category of inventory exceeded the permitted maximum for that category. How was that condition relieved? _____

For any excess inventory at the end of the quarter, state how and when this condition will be relieved. Attach additional sheets, if necessary.

- Certification:
To the best of my knowledge and belief, I certify the information provided in this report is true, accurate, and complete.

John Horning
Print Name of Authorized Agent

John Horning
Signature of Authorized Agent

4-26-11
Date

Mail completed form to the appropriate District office listed below

Northwest District
160 Government Center
Pensacola, FL 32501-5794
850-805-8360

Northeast District
7825 Baymeadows Way, Ste. 200 B
Jacksonville, FL 32256-7500
904-807-3300

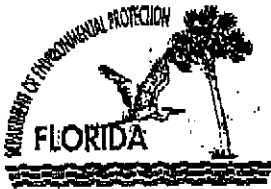
Central District
3319 Magnolia Blvd., Ste. 232
Orlando, FL 32803-3787
407-694-7555

Southwest District
13051 N. Telecom Pky.
Tampa Terrace, FL
813-832-7900



South District
2295 Victoria Ave., Ste. 384
Fort Myers, FL 33002-2649
239-932-8979

Southeast District
400 North Congress Ave.
West Palm Beach, FL 33401
561-661-6500



mailed + E-mailed / Faxed
Department of ~~James St...~~
Environmental Protection
Bob Martinez Center
2600 Blair Stone Road
Tallahassee, Florida 32399-2400

DEP Form # 62-701.900(2)
Form Title: Waste Tire Processing Facility Quarterly Report
Effective Date: January 5, 2010
DEP Application No. _____
(Completed by DEP)

WASTE TIRE PROCESSING FACILITY QUARTERLY REPORT

Pursuant to Rule 62-711.530, Florida Administrative Code, the owner or operator of a waste tire processing facility shall submit the following information to the Department quarterly.

Quarter covered by this report 2nd Quarter 2011 (First quarter begins on January 1 of any given year)

- Facility name: Garden Street Iron + Metal, Inc.
- Facility mailing address: 3350 Metro Pkwy
City: Fort Myers County: Lee Zip: 33916
- Facility permit number: WACS 00078386
- Facility telephone number: (239) 337-5865
- Authorized person preparing report: John Hoving
- Affiliation with facility: manag.
- Telephone number (if different from above): ()
- Activity: Report in tons

	Beginning Inventory	Received	Processed	Consumed	Removed	Adjustments	Ending Inventory
Used Tires							
Other whole Tires	0	1,088. ⁵⁹	1,088. ⁵⁹				0
Processed tires							
Processing Waste							
Other							
Total		1,088. ⁵⁹	1,088. ⁵⁹				0

- Explain all inventory adjustments. _____
- List any period in which one or more category of inventory exceeded the permitted maximum for that category. How was that condition relieved?

For any excess inventory at the end of the quarter, state how and when this condition will be relieved. Attach Additional sheets, if necessary.

9. Certification:

To the best of my knowledge and belief, I certify the information provided in this report is true, accurate, and complete.

John Hoving John Hoving 7-30-11
Print Name of Authorized Agent Signature of Authorized Agent Date

Mail completed form to the appropriate District office listed below

Northwest District
16C Government Center
Pensacola, FL 32501-5794
866-503-8360

Northeast District
7825 Baymeadows Way, Ste. 200 B
Jacksonville, FL 32236-7590
904-807-3300

Central District
3313 Maguire Blvd., Ste. 252
Orlando, FL 32803-3767
407-894-7655

Southwest District
13061 N. Telecom Pkwy.
Tempe Terrace, FL
813-832-7900

South District
3206 Victoria Ave., Ste. 384
Fort Myers, FL 33802-2549
239-532-8975

Southeast District
400 North Congress Ave.
West Palm Beach, FL 33401
561-981-6800



Department of Environmental Protection

Bob Martinez Center
2800 Blair Stone Road
Tallahassee, Florida 32399-2400

DEP Form # 62-701.900(21)
Form Title: Waste Tire Processing Facility Quarterly Report
Effective Date: January 6, 2010
DEP Application No. _____
(Completed by DEP)

WASTE TIRE PROCESSING FACILITY QUARTERLY REPORT

Pursuant to Rule 62-711.530, Florida Administrative Code, the owner or operator of a waste tire processing facility shall submit the following information to the Department quarterly.

Quarter covered by this report 2012 - 1st quarter (First quarter begins on January 1 of any given year)

- Facility name: Garden Street Iron + Metal, Inc.
- Facility mailing address: 3350 Metro Pkwy
City: Ft Myers County: LEE Lec Zip: 33916
- Facility permit number: WACS 00098386
- Facility telephone number: (239) 337-5865
- Authorized person preparing report: John Hoving
- Affiliation with facility: mang.
- Telephone number (if different from above): ()
- Activity: Report in tons

	Beginning Inventory	Received	Processed	Consumed	Removed	Adjustments	Ending Inventory
Used Tires							
Other whole Tires		917	917				
Processed tires							
Processing Waste							
Other							
Total		917	917				

- Explain all inventory adjustments. _____
- List any period in which one or more category of inventory exceeded the permitted maximum for that category. How was that condition relieved?

For any excess inventory at the end of the quarter, state how and when this condition will be relieved. Attach Additional sheets, if necessary.

9. Certification:

To the best of my knowledge and belief, I certify the information provided in this report is true, accurate, and complete.

John Hoving Print Name of Authorized Agent
John Hoving Signature of Authorized Agent
4-21-12 Date

Mail completed form to the appropriate District office listed below

E-mailed / Faxed
4-21-12

Northwest District
160 Government Center
Panama City, FL 32301-5794
850-595-8360

Northeast District
7825 Baymeadows Way, Ste. 200 B
Jacksonville, FL 32256-7580
904-807-3300

Central District
3318 Maguire Blvd., Ste. 232
Orlando, FL 32803-3787
407-994-7555

Southwest District
13051 N. Telecom Pkwy.
Tempe Terrace, FL
813-832-7600

South District
2295 Victoria Ave., Ste. 354
Fort Myers, FL 33802-2549
239-332-8975

Southeast District
400 North Congress Ave.
West Palm Beach, FL 33401
561-681-6600



Department of Environmental Protection

Bob Martinez Center
2600 Blair Stone Road
Tallahassee, Florida 32399-2400

DEP Form # 62-701.900(21)
Form Title: Waste Tire Processing Facility Quarterly Report
Effective Date: January 6, 2010
DEP Application No. _____
(Completed by DEP)

WASTE TIRE PROCESSING FACILITY QUARTERLY REPORT

Pursuant to Rule 62-711.530, Florida Administrative Code, the owner or operator of a waste tire processing facility shall submit the following information to the Department quarterly.

Quarter covered by this report 2nd quarter 2012 (First quarter begins on January 1 of any given year)

1. Facility name: Garden Street Iron + Metal Inc.
2. Facility mailing address: 3350 Metro Pkwy
City: Fort Myers County: Lee Zip: 33916
3. Facility permit number: WAC 5 00098386
4. Facility telephone number: (239) 337-5865
5. Authorized person preparing report: John Hoving
6. Affiliation with facility: manag
7. Telephone number (if different from above): ()
8. Activity: Report in tons

	Beginning Inventory	Received	Processed	Consumed	Removed	Adjustments	Ending Inventory
Used Tires							
Other whole Tires		<u>583.92</u>	<u>583.92</u>				
Processed tires							
Processing Waste							
Other							
Total		<u>583.92</u>	<u>583.92</u>				<u>0</u>

- a. Explain all inventory adjustments.
- b. List any period in which one or more category of inventory exceeded the permitted maximum for that category. How was that condition relieved?

For any excess inventory at the end of the quarter, state how and when this condition will be relieved. Attach additional sheets, if necessary.

9. Certification:

To the best of my knowledge and belief, I certify the information provided in this report is true, accurate, and complete.

John Hoving Print Name of Authorized Agent
John Hoving Signature of Authorized Agent
8-4-12 Date

Mail completed form to the appropriate District office listed below

E-mailed / ~~boxed~~
8-4-12/2:20^{pm}

Northwest District
160 Government Center
Pensacola, FL 32501-4794
890-595-8360

Northeast District
7825 Baymeadows Way, Ste. 200 B
Jacksonville, FL 32256-7890
904-807-3300

Central District
3319 Maguire Blvd., Ste. 232
Orlando, FL 32803-3787
407-894-7555

Southwest District
13051 N. Telecom Pkwy
Tempe Terrace, FL
913-632-7800

South District
2295 Victoria Ave., Ste. 304
Fort Myers, FL 33902-2549
239-332-8975

Southeast District
400 North Congress Ave.
West Palm Beach, FL 33401
561-661-6800



Department of Environmental Protection

Bob Martinez Center
2600 Blair Stone Road
Tallahassee, Florida 32399-2400

DEP Form # 62-701.900(21)
Form Title: Waste Tire Processing Facility Quarterly Report
Effective Date: January 6, 2010
DEP Application No _____
(Completed by DEP)

WASTE TIRE PROCESSING FACILITY QUARTERLY REPORT

Pursuant to Rule 62-711.530, Florida Administrative Code, the owner or operator of a waste tire processing facility shall submit the following information to the Department quarterly.

Quarter covered by this report 3rd - 2012 (First quarter begins on January 1 of any given year)

- Facility name: Garden Street Iron & Metal, Inc.
- Facility mailing address: 3350 Metro Pkwy
City: Fort Myers County: Lee Zip: 33916
- Facility permit number: WAC 5 00096386
- Facility telephone number: (239) 332-5865
- Authorized person preparing report: John Hoving E-mailed / Faxed JH
- Affiliation with facility: manag. 10-12-12
- Telephone number (if different from above): () James St.
- Activity: Report in tons

	Beginning Inventory	Received	Processed	Consumed	Removed	Adjustments	Ending Inventory
Used Tires							
Other whole Tires		743.9	743.9				
Processed tires							
Processing Waste							
Other							
Total		743.9	743.9				0

- Explain all inventory adjustments. _____
- List any period in which one or more category of inventory exceeded the permitted maximum for that category. How was that condition relieved? _____

For any excess inventory at the end of the quarter, state how and when this condition will be relieved. Attach Additional sheets, if necessary.

9. Certification:

To the best of my knowledge and belief, I certify the information provided in this report is true, accurate, and complete.

John Hoving John Hoving 10-12-12
Print Name of Authorized Agent Signature of Authorized Agent Date

Mail completed form to the appropriate District office listed below

Northwest District
160 Government Center
Pensacola, FL 32501-5794
850-595-8360

Northeast District
7825 Baymeadows Way, Ste. 200 B
Jacksonville, FL 32256-7590
904-807-3300

Central District
3319 Maguire Blvd., Ste. 232
Orlando, FL 32803-3767
407-894-7555

Southwest District
13051 N. Telecom Pky.
Temple Terrace, FL
813-632-7600

South District
2295 Victoria Ave., Ste. 364
Fort Myers, FL 33902-2549
239-332-6975

Southeast District
400 North Congress Ave.
West Palm Beach, FL 33401
561-681-6600



Department of Environmental Protection

Bob Martinez Center
2600 Blair Stone Road
Tallahassee, Florida 32399-2400

DEP Form # 62-701.900(21)
Form Title: Waste Tire Processing Facility Quarterly Report
Effective Date: January 6, 2010
DEP Application No. _____
(Completed by DEP)

WASTE TIRE PROCESSING FACILITY QUARTERLY REPORT

Pursuant to Rule 62-711.530, Florida Administrative Code, the owner or operator of a waste tire processing facility shall submit the following information to the Department quarterly.

Quarter covered by this report 4th 2012 (First quarter begins on January 1 of any given year)

- Facility name: Garden Street Iron + Metal, Inc.
- Facility mailing address: 3350 Metro Pkwy
City: Fort Myers County: Lee Zip: 33916
- Facility permit number: WAC 5 00098386
- Facility telephone number: (239) 337-5865
- Authorized person preparing report: John Hoving
- Affiliation with facility: manag
- Telephone number (if different from above): ()
- Activity: Report in tons

	Beginning Inventory	Received	Processed	Consumed	Removed	Adjustments	Ending Inventory
Used Tires							
Other whole Tires		803.61	803.61				
Processed tires							
Processing Waste							
Other							
Total		803.61	803.61				

917
534
744
84
3049
tons

- Explain all inventory adjustments. _____
- List any period in which one or more category of inventory exceeded the permitted maximum for that category. How was that condition relieved?

For any excess inventory at the end of the quarter, state how and when this condition will be relieved. Attach Additional sheets, if necessary.

9. Certification:

To the best of my knowledge and belief, I certify the information provided in this report is true, accurate, and complete.

John Hoving _____ John Hoving _____ 5-2-13
Print Name of Authorized Agent Signature of Authorized Agent Date

Mail completed form to the appropriate District office listed below

to Jane + Bill

E-mailed / Faxed
5-2-13 JH

Northwest District
160 Government Center
Pensacola, FL 32501-5794
850-595-8360

Northeast District
7825 Baymeadows Way, Ste. 200 B
Jacksonville, FL 32256-7590
904-807-3300

Central District
3319 Maguire Blvd., Ste. 232
Orlando, FL 32803-3767
407-894-7555

Southwest District
13051 N. Telecom Pky.
Temple Terrace, FL
813-632-7600

South District
2295 Victoria Ave., Ste. 364
Fort Myers, FL 33902-2549
239-332-6975

Southeast District
400 North Congress Ave.
West Palm Beach, FL 33401
561-681-6600



Florida Department of Environmental Protection

Bob Martinez Center
2600 Blair Stone Road
Tallahassee, Florida 32399-2400

DEP Form # 62-701.900(22), F.A.C.
Form Title: Waste Tire Collector Annual Report
Effective Date: January 6, 2010
DEP Application No. _____
(Completed by DEP)

WASTE TIRE COLLECTOR ANNUAL REPORT (For Calendar Year Ending 2012)

+ UPS
E-mailed / ~~boxed~~
5-3-13 JH to James

Pursuant to Rule 62-711.520, Florida Administrative Code, waste tire collectors are required to submit the following information to the Department by March 1 of each year. The annual report must be submitted along with the annual registration renewal application and registration fee as a condition of holding a waste tire collector registration number.

1. Business name: Garden Street Iron + Metal Inc WACS ID Number: 500098386
(assigned by Department)

2. Business mailing address: 3350 Metro Pkwy
City: Ft Myers State: FL Zip: 33916

3. Business street address: Same
City: _____ State: _____ Zip: _____

4. Business telephone: (239) 337 5865 Email address: John@GSIMrecycling.com

5. Total quantity of waste tires, expressed in tons, collected or generated during the calendar year
(assume 100 tires per ton or 10 tires per cubic yard): 3,048.56 tons tires

6. Describe how the waste tires collected were disposed of during the calendar year, reported in tons. (assume 100 passenger tires per ton, 20 truck tires per ton.)

- A. List total quantity of waste tires sold as used tires. A. 0 tons tires
- B. List quantity of waste tire casings sold. B. 0 tons tires
- C. List quantity of waste tires hauled off by other Waste Tire Collectors. Attach additional sheets, if necessary.

Name of Other Collector	Collector Registration Number	Quantity in tons

C. 0 tons tires

- D. List the facilities where waste tires were deposited for disposal or recycling and the quantity disposed at each location. Attach additional sheets, if necessary.

Name of Facility	Address / City / State	Quantity in tons

D. 0 tons tires

TOTAL Tires sold or deposited for disposal or recycling

A + B + C + D 0 tons tires



Department of Environmental Protection

Bob Martinez Center
2800 Blair Stone Road
Tallahassee, Florida 32399-2400

DEP Form # 62-701.900(21)
Form Title: Waste Tire Processing Facility Quarterly Report
Effective Date: January 6, 2010
DEP Application No. _____
(Completed by DEP)

WASTE TIRE PROCESSING FACILITY QUARTERLY REPORT

Pursuant to Rule 62-711.530, Florida Administrative Code, the owner or operator of a waste tire processing facility shall submit the following information to the Department quarterly.

Quarter covered by this report 1st 2013 (First quarter begins on January 1 of any given year)

1. Facility name: Garden Street Iron + Metal, Inc
2. Facility mailing address: 3350 Metro Pkwy
City: Fort Myers County: Lee Zip: 33916
3. Facility permit number: WAC 5 00098386
4. Facility telephone number: (239) 337-5865
5. Authorized person preparing report: John Hoving
6. Affiliation with facility: Manager
7. Telephone number (if different from above): ()
8. Activity: Report in tons

	Beginning Inventory	Received	Processed	Consumed	Removed	Adjustments	Ending Inventory
Used Tires							
Other whole Tires		986.39	986.39				
Processed tires							
Processing Waste							
Other							
Total							

- a. Explain all inventory adjustments. _____
- b. List any period in which one or more category of inventory exceeded the permitted maximum for that category. How was that condition relieved?

For any excess inventory at the end of the quarter, state how and when this condition will be relieved. Attach Additional sheets, if necessary.

9. Certification:

To the best of my knowledge and belief, I certify the information provided in this report is true, accurate, and complete.

John Hoving John Hoving 5-2-13
Print Name of Authorized Agent Signature of Authorized Agent Date

Mail completed form to the appropriate District office listed below

to James + Bill E-mailed / Faxed
5-2-13 JH

Northwest District
180 Government Center
Panama City, FL 32301-8794
850-995-8360

Northeast District
7825 Baymeadows Way, Ste. 200 B
Jacksonville, FL 32258-7580
904-607-3300

Central District
3319 Maguire Blvd., Ste. 232
Orlando, FL 32803-3787
407-894-7555

Southwest District
13051 N. Telecom Pkwy.
Tempe Terrace, FL
813-632-7600

South District
2295 Victoria Ave., Ste. 364
Fort Myers, FL 33802-2549
239-332-8976

Southeast District
400 North Congress Ave.
West Palm Beach, FL 33401
561-681-8800



Department of Environmental Protection

Bob Martinez Center
2600 Blair Stone Road
Tallahassee, Florida 32399-2400

DEP Form # 62-701.900(21)
Form Title: Waste Tire Processing Facility Quarterly Report
Effective Date: January 6, 2010
DEP Application No. _____
(Completed by DEP)

WASTE TIRE PROCESSING FACILITY QUARTERLY REPORT

Pursuant to Rule 62-711.530, Florida Administrative Code, the owner or operator of a waste tire processing facility shall submit the following information to the Department quarterly.

- Quarter covered by this report 2nd/2013 (First quarter begins on January 1 of any given year)
- Facility name: Garden Street Iron + Metal, Inc
 - Facility mailing address: 3350 Metro Pkwy
City: Fr Myers County: Lee Zip: 33916
 - Facility permit number: WAC 500098386
 - Facility telephone number: (239) 337 5865
 - Authorized person preparing report: John Hoving
 - Affiliation with facility: manag
 - Telephone number (if different from above): ()
 - Activity: Report in tons

	Beginning Inventory	Received	Processed	Consumed	Removed	Adjustments	Ending Inventory
Used Tires							
Other whole Tires		898.04	898.04				
Processed tires							
Processing Waste							
Other							
Total							

- Explain all inventory adjustments.
- List any period in which one or more category of inventory exceeded the permitted maximum for that category. How was that condition relieved?
For any excess inventory at the end of the quarter, state how and when this condition will be relieved. Attach additional sheets, if necessary.

9. Certification:
To the best of my knowledge and belief, I certify the information provided in this report is true, accurate, and complete.

John Hoving
Print Name of Authorized Agent

John Hoving
Signature of Authorized Agent

7-17-13
Date

Mall completed form to the appropriate District office listed below

B.11
Jame
E-mailed / Faxed + mailed
7-17-13 JH

Northwest District
190 Government Center
Pensacola, FL 32501-6794
850-595-8360

Northeast District
7825 Baymeadows Way, Ste. 200 B
Jacksonville, FL 32256-7590
904-607-3300

Central District
3319 Maguire Blvd., Ste. 232
Orlando, FL 32803-3787
407-894-7555

Southwest District
13051 N. Tolocum Pkwy.
Tempe Terrace, FL
813-832-7600

South District
2295 Victoria Ave., Ste. 364
Fort Myers, FL 33902-2548
239-332-8975

Southeast District
400 North Congress Ave.
West Palm Beach, FL 33401
561-681-6800



Florida Department of Environmental Protection

Bob Martinez Center
2600 Blair Stone Road
Tallahassee, Florida 32399-2400

DEP Form # 62-701.900(22), F.A.C.
Form Title: Waste Tire Collector Annual Report
Effective Date: January 6, 2010
DEP Application No.
(Completed by DEP)

WASTE TIRE COLLECTOR ANNUAL REPORT (For Calendar Year Ending 2013)

+ Bill
E-mailed / Faxed + Snail mail
1-29-14
to Tallahassee

Pursuant to Rule 62-711.520, Florida Administrative Code, waste tire collectors are required to submit the following information to the Department by March 1 of each year. The annual report must be submitted along with the annual registration renewal application and registration fee as a condition of holding a waste tire collector registration number.

1. Business name: Garden Street Iron + Metal, Inc WACS ID Number: 500098386
(assigned by Department)

2. Business mailing address: 3350 Metro Pkwy
City: Ft Myers State: FL Zip: 33916

3. Business street address: _____
City: _____ State: _____ Zip: _____

4. Business telephone: (239) 337-5865 Email address: John

5. Total quantity of waste tires, expressed in tons, collected or generated during the calendar year (assume 100 tires per ton or 10 tires per cubic yard): 3,496 tons tires

6. Describe how the waste tires collected were disposed of during the calendar year, reported in tons. (assume 100 passenger tires per ton, 20 truck tires per ton.)

- A. List total quantity of waste tires sold as used tires. A. tons tires
- B. List quantity of waste tire casings sold. B. tons tires
- C. List quantity of waste tires hauled off by other Waste Tire Collectors. Attach additional sheets, if necessary.

Name of Other Collector	Collector Registration Number	Quantity in tons

C. tons tires

D. List the facilities where waste tires were deposited for disposal or recycling and the quantity disposed at each location. Attach additional sheets, if necessary.

Name of Facility	Address / City / State	Quantity in tons
<u>Highland County Landfill</u>	<u>12700 ^{Arbuckle} Sebring, FL 33870</u>	<u>2,007</u>
<u>Charlotte County Landfill</u>	<u>29751 Zemel Punta Gorda FL</u>	<u>405</u>
<u>Waste Mang Collier</u>	<u>3730 White Lake Naples FL</u>	<u>194</u>

D. 2606 tons tires

TOTAL Tires sold or deposited for disposal or recycling A + B + C + D 2606 tons tires

Landfills use this for covering or the Leach fields for recovering gas.



Department of Environmental Protection

Bob Martinez Center
2600 Blair Stone Road
Tallahassee, Florida 32399-2400

DEP Form # 62-701.900(21)
Form Title: Waste Tire Processing Facility Quarterly Report
Effective Date: January 6, 2010
DEP Application No. _____ (Completed by DEP)

WASTE TIRE PROCESSING FACILITY QUARTERLY REPORT

Pursuant to Rule 62-711.530, Florida Administrative Code, the owner or operator of a waste tire processing facility shall submit the following information to the Department quarterly.

Quarter covered by this report 1st - 2014 (First quarter begins on January 1 of any given year)

*E-mailed / Faxed
12/16
James Stans*

- Facility name: Garden Street Iron + Metal, Inc.
- Facility mailing address: 3350 Metro Pkwy
City: Fr Myers County: Lee Zip: 33916
- Facility permit number: WAC 500098386
- Facility telephone number: (239) 337-5965
- Authorized person preparing report: John Hoving
- Affiliation with facility: Manager
- Telephone number (if different from above): ()
- Activity: Report in tons

	Beginning Inventory	Received	Processed	Consumed	Removed	Adjustments	Ending Inventory
Used Tires							
Other whole Tires		854.29	854.29				
Processed tires							
Processing Waste							
Other							
Total			844.29				0

- Explain all inventory adjustments. _____
- List any period in which one or more category of inventory exceeded the permitted maximum for that category. How was that condition relieved? _____

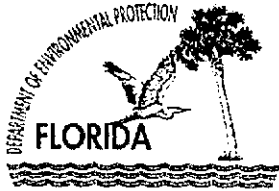
For any excess inventory at the end of the quarter, state how and when this condition will be relieved. Attach Additional sheets, if necessary.

9. Certification:
To the best of my knowledge and belief, I certify the information provided in this report is true, accurate, and complete.

John Hoving John Hoving 6-12-14
Print Name of Authorized Agent Signature of Authorized Agent Date

Mail completed form to the appropriate District office listed below

- | | | | | | |
|---|--|--|---|---|--|
| Northwest District
160 Government Center
Pensacola, FL 32501-5794
850-595-8360 | Northeast District
7825 Baymeadows Way, Ste. 200 B
Jacksonville, FL 32256-7580
904-607-3300 | Central District
3319 Maguire Blvd., Ste. 232
Orlando, FL 32803-3767
407-894-7555 | Southwest District
13051 N. Telecom Pky.
Temple Terrace, FL
813-832-7600 | South District
2295 Victoria Ave., Ste. 364
Fort Myers, FL 33902-2549
239-332-6975 | Southeast District
400 North Congress Ave.
West Palm Beach, FL 33401
561-681-6600 |
|---|--|--|---|---|--|



Department of Environmental Protection

Bob Martinez Center
2600 Blair Stone Road
Tallahassee, Florida 32399-2400

DEP Form # 62-701.900(21)
Form Title: Waste Tire Processing Facility Quarterly Report
Effective Date: January 6, 2010
DEP Application No. _____ (Completed by DEP)

WASTE TIRE PROCESSING FACILITY QUARTERLY REPORT

Pursuant to Rule 62-711.530, Florida Administrative Code, the owner or operator of a waste tire processing facility shall submit the following information to the Department quarterly.

Quarter covered by this report 2nd 2014 (First quarter begins on January 1 of any given year)

- Facility name: Garden Street Iron + Metal, Inc.
- Facility mailing address: 3350 Metro Pkwy
City: Ft Myers County: Lee Zip: 33916
- Facility permit number: WAC 500098386
- Facility telephone number: (239) 337-5865
- Authorized person preparing report: John Hoving
- Affiliation with facility: ops mang.
- Telephone number (if different from above): ()
- Activity: Report in tons

	Beginning Inventory	Received	Processed	Consumed	Removed	Adjustments	Ending Inventory
Used Tires							
Other whole Tires		587	587				
Processed tires							
Processing Waste							
Other							
Total			587				0

- Explain all inventory adjustments _____
- List any period in which one or more category of inventory exceeded the permitted maximum for that category. How was that condition relieved?

For any excess inventory at the end of the quarter, state how and when this condition will be relieved. Attach Additional sheets, if necessary.

9. Certification:

To the best of my knowledge and belief, I certify the information provided in this report is true, accurate, and complete.

John Hoving Print Name of Authorized Agent John Hoving Signature of Authorized Agent 10-15-14 Date

Mail completed form to the appropriate District office listed below

Northwest District
160 Government Center
Pensacola, FL 32501-5794
850-595-8360

Northeast District
7825 Baymeadows Way, Ste. 200 B
Jacksonville, FL 32256-7590
904-607-3300

Central District
3319 Maguire Blvd., Ste. 732
Orlando, FL 32803-3767
407-894-7535

Southwest District
13051 N. Telecom Pky.
Temple Terrace, FL
813-632-7600

South District
2295 Victoria Ave., Ste. 364
Fort Myers, FL 33902-2549
239-332-6975

Southeast District
400 North Congress Ave.
West Palm Beach, FL 33401
561-681-6600



Department of Environmental Protection

Bob Martinez Center
2600 Blair Stone Road
Tallahassee, Florida 32399-2400

DEP Form # 62-701.900(21)
Form Title: Waste Tire Processing Facility Quarterly Report
Effective Date: January 6, 2010
DEP Application No. _____ (Completed by DEP)

WASTE TIRE PROCESSING FACILITY QUARTERLY REPORT

Pursuant to Rule 62-711.530, Florida Administrative Code, the owner or operator of a waste tire processing facility shall submit the following information to the Department quarterly.

Quarter covered by this report 3rd 2014 (First quarter begins on January 1 of any given year)

- Facility name: Garden Street Iron + Metal, Inc.
- Facility mailing address: 3350 Metro Pkwy
City: Ft. County: Lee Zip: 33916
- Facility permit number: WAC 500098386
- Facility telephone number: (239) 337-5865
- Authorized person preparing report: John Hoving
- Affiliation with facility: manag
- Telephone number (if different from above): ()
- Activity: Report in tons

	Beginning Inventory	Received	Processed	Consumed	Removed	Adjustments	Ending Inventory
Used Tires							
Other whole Tires		<u>722</u>	<u>722</u>				
Processed tires							
Processing Waste							
Other							
Total			<u>722</u>				<u>0</u>

- Explain all inventory adjustments. _____
- List any period in which one or more category of inventory exceeded the permitted maximum for that category. How was that condition relieved?

For any excess inventory at the end of the quarter, state how and when this condition will be relieved. Attach Additional sheets, if necessary.

9. Certification:
To the best of my knowledge and belief, I certify the information provided in this report is true, accurate, and complete.

John Hoving Print Name of Authorized Agent John Hoving Signature of Authorized Agent 10-15-14 Date

Mail completed form to the appropriate District office listed below

Northwest District
160 Government Center
Pensacola, FL 32501-5794
850-595-8360

Northeast District
7825 Baymeadows Way, Ste. 200 B
Jacksonville, FL 32256-7590
904-607-3300

Central District
3319 Maguire Blvd., Ste. 232
Orlando, FL 32803-3787
407-894-7555

Southwest District
13051 N. Telecom Pkwy.
Temple Terrace, FL
813-632-7600

South District
2295 Victoria Ave., Ste. 364
Fort Myers, FL 33902-2549
239-332-6975

Southeast District
400 North Congress Ave.
West Palm Beach, FL 33401
561-681-6600

Section 6

Closing Plan
Copy of Financial Assurance

Insert copy of Letter of Credit in this section

CLOSING PLAN
For Waste Tire Processing and Storage

**Facility: GARDEN STREET IRON & METAL
(WASTE TIRE PROCESSING CENTER)
WACS ID NO. 000098386**

**Location: 3350 METRO PARKWAY
FORT MYERS, FLORIDA 33916**

**Applicant: GARDEN STREET IRON & METAL INC. OF S.W. FLORIDA
ROB WEBER, PRESIDENT**

**Submitted to: FLORIDA DEPARTMENT OF ENVIRONMENTAL PROTECTION
PO BOX 2549
FORT MYERS, FLORIDA 33902-2549**

**Prepared by: KEENE ENGINEERING, INC.
PO BOX 2770
FORT MYERS, FLORIDA 33902**

Date: November 25, 2014

I. The purpose of this plan is to meet the requirements of FAC 62-711.700, Closing of Waste Tire Sites. The following steps are to be followed in closing this facility. Note, if the operation of this facility does not continue to meet the requirements of the Waste Tire Rule [FAC 62-711], it shall not receive any waste tires and shall follow the closing procedures until the site is in compliance with the conditions of its waste tire permit.

II. Closing Procedures [FAC 62-711.700(3)(a)]

In closing the waste tire processing aspect of the Garden Street Iron & Metal operation, the following steps are to be followed:

Step 1 - Discontinue the receipt of waste tires from waste tire haulers and other private individuals [FAC 62-711.700(2)(a)].

Step 2 – Post a notice at the Tara Lee entrance to the facility to bulk waste tire are no longer being accepted. This sign shall also include the phone number of the Lee County solid waste authority [FAC 62-711.700(2)(b)].

Step 3 – Notify the Florida Department of Environmental Protection and Lee County government of intent and act of closing the waste tire processing facility [FAC 62-711.700(2)(c)].

Step 4 - Processing all remaining onsite tires through the shredder or otherwise have them hauled to another waste tire processing facility. Remove any solid waste from the processing of waste tires to an approved solid waste facility [FAC 62-711.700(2)(d) and (e)].

Step 5 - File all final reports required by the FDEP as to final quantities of waste tire disposed of and location of disposal and notify FDEP when closing is complete [FAC 62-711.700(2)(f)].

III. Closing Schedule [FAC 62-711.700(3)(b)]

The following schedule is to be used when closing the facility for the processing of waste tires:

Day 1 – Complete Steps 1,2 and 3 listed above.

Days 2 thru 40 – Complete Step 4 above.

Days 41 thru 60 – Complete Step 5 above.

IV. Site Rehabilitation [FAC 62-711.700(3)(c)]

Since the Garden Street Iron & Metal facility will continue as a scrap processing yard, there will be no specific site rehabilitation associated with the waste tire facility.

V. Financial Assurance [FAC 62-711.700(3)(d)]

A closing cost estimate is attached to this plan. Garden Street Iron & Metal Inc. of S.W. Florida will provide a bond meeting the requirements of FAC 62-711.500(3)(c).

June 16, 2009

Rob Weber
Garden Street Iron & Metal Inc.
3350 Metro Pkwy
Fort Myers, FL 33916

Wherry Truck Lines will load, haul and dispose of used tires located at 3350 Metro Pkwy in Fort Myers for the following rates for approximately 8,000 car and truck tires:

- Mobilize loader in - \$350
- Mobilize loader out - \$350
- Loader - \$85/hr
- Tires hauled to Lee County Waste to Energy (incinerator) located at 10550 Buckingham Rd, Fort Myers - \$250 per 100 yard walking floor trailer load -- Freight only
- Disposal rate for passenger tires - \$132.25 per ton
- Disposal rate for OTR tires - \$172.50 per ton


All agreements are contingent upon accidents or delays beyond our control.


- Auto Liability Insurance of \$1,000,000.00
- Full Workman's Compensation is carried on all employees
- General Liability Insurance of \$2,000,000.00

Terms of Payment: Due upon receipt
Federal Tax ID# 650339512

ACCEPTANCE OF SERVICE AGREEMENT

The above prices, specifications and conditions are satisfactory and are hereby accepted. You are authorized to do the work as specified. This quote will be valid for 1 year.


Kendell T. Wherry
Wherry Truck Lines, Inc.


Rob Weber
Garden Street Iron & Metal Inc.

P.O. Box 61008 - Fort Myers, Florida 33906-1008
Phone 239-768-1293 Fax 239-768-6552



Closing Cost Estimate
 for
Garden Street Iron & Metal
Waste Tire Processing Center
 WACS 00098386

Facility: Garden Street Iron & Metal
 3350 Metro Parkway
 Fort Myers, Fl. 33916

Date: November 24, 2014

<u>Description</u>	<u>Unit Cost</u>	<u>Units</u>	<u>Quant.</u>	<u>Total</u>
Mobilization (in and out)	\$ 500.00	Ea	2	\$ 1,000.00
<i>Load Tires</i>				
Loader Machine Time	\$ 125.00	Hr	16	\$ 2,000.00
Walking Floor Trailer	\$ 250.00	Load	12	\$ 3,000.00
<i>Tire Disposal (Lee County Resource Recovery Facility)</i>				
Passenger Tires	\$ 51.50	Ton	140	\$ 7,210.00
OTR Tires	\$ 110.00	Ton	100	\$ 11,000.00
Total Estimate				\$ 24,210.00

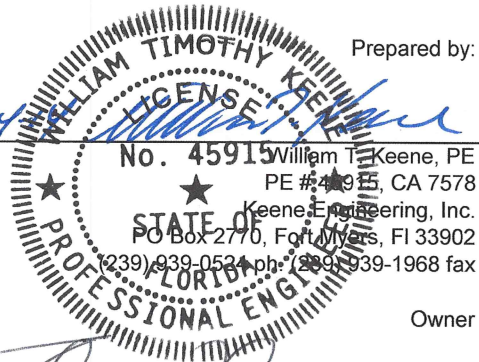
Assumptions:

- 1 Based on unit cost quote from Wherry Truck Lines
- 2 Total Tires Assumed
- 3 Updated Pricing from Lee County Solid Waste is attached to this estimate form.

# of Passenger Car Tires	14000	x	0.01 tons/tire =	140
# of OTR Tires	2000	x	0.05 tons/tire =	100
			Total Tons	240

date

11-24

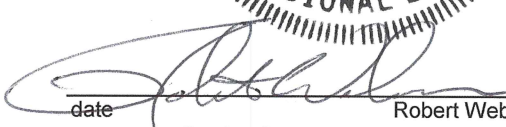


Prepared by:

William T. Keene, PE
 PE #45915, CA 7578
 Keene Engineering, Inc.
 PO Box 2770, Fort Myers, Fl 33902
 (239) 939-0524 ph: (239) 939-1968 fax

Owner

date


 Robert Weber, President
 Garden Street Iron & Metal Inc. of S.W. Florida
 3350 Metro Parkway
 Fort Myers, Fl 33916
 (239) 337-5865

Note - Disposal rates update per fax from Lee County Solid Waste Nov. 12, 2014



Florida Department of Environmental Protection

Bob Martinez Center
2600 Blair Stone Road
Tallahassee, Florida 32399-2400

DEP Form # 62-701.900(28), F.A.C.
Form Title: Closure Cost Estimating Form For Solid Waste Facilities
Effective Date: January 6, 2010
Incorporated in Rule 62-701.630(3), F.A.C.

CLOSURE COST ESTIMATING FORM FOR SOLID WASTE FACILITIES

Date of DEP Approval: _____

I. GENERAL INFORMATION:

Facility Name: Garden Street Iron & Metal Waste Tire Processing Center WACS ID: 000098368
Permit Application or Consent Order No.: _____ Expiration Date: 12/9/2014
Facility Address: 3350 Metro Parkway, Fort Myers, FL. 33916
Permittee or Owner/Operator: Rob Weber
Mailing Address: 3350 Metro Parkway, Fort Myers, FL. 33916

Latitude: 26 ° 37 ' 4.4 " Longitude: 81 ° 51 ' 13.8 "
Coordinate Method: _____ Datum: _____
Collected by: _____ Company/Affiliation: _____

Solid Waste Disposal Units Included in Estimate:

Phase / Cell	Acres	Date Unit Began Accepting Waste	Active Life of Unit From Date of Initial Receipt of Waste	If active: Remaining life of unit	If closed: Date last waste received	If closed: Official date of closing

Total disposal unit acreage included in this estimate: _____ Closure: _____ Long-Term Care: _____

Facility type: Class I Class III C&D Debris Disposal
(Check all that apply) Other: Waste Tire Processing Facility

II. TYPE OF FINANCIAL ASSURANCE DOCUMENT (Check type)

- Letter of Credit* Insurance Certificate Escrow Account
- Performance Bond* Financial Test Form 29 (FA Deferral)
- Guarantee Bond* Trust Fund Agreement

* - Indicates mechanisms that require the use of a Standby Trust Fund Agreement

Northwest District
160 Government Center
Pensacola, FL 32502-5794
850-595-8360

Northeast District
7825 Baymeadows Way, Ste. B200
Jacksonville, FL 32256-7590
904-807-3300

Central District
3319 Maguire Blvd., Ste. 232
Orlando, FL 32803-3767
407-894-7555

Southwest District
13051 N. Telecom Pky.
Temple Terrace, FL 33637
813-632-7600

South District
2295 Victoria Ave., Ste. 364
Fort Myers, FL 33901-3881
239-332-6975

Southeast District
400 N. Congress Ave., Ste. 200
West Palm Beach, FL 33401
561-681-6600

III. ESTIMATE ADJUSTMENT

40 CFR Part 264 Subpart H as adopted by reference in Rule 62-701.630, Florida Administrative Code, (F.A.C.) sets forth the method of annual cost estimate adjustment. Cost estimates may be adjusted by using an inflation factor or by recalculating the maximum costs of closure in current dollars. Select one of the methods of cost estimate adjustment below.

(a) Inflation Factor Adjustment

(b) Recalculated or New Cost Estimates

Inflation adjustment using an inflation factor may only be made when a Department approved closure cost estimate exists and no changes have occurred in the facility operation which would necessitate modification to the closure plan. The inflation factor is derived from the most recent Implicit Price Deflator for Gross National Product published by the U.S. Department of Commerce in its survey of Current Business. The inflation factor is the result of dividing the latest published annual Deflator by the Deflator for the previous year. The inflation factor may also be obtained from the Solid Waste website www.dep.state.fl.us/waste/categories/swfr or call the Financial Coordinator at (850) 245-8706.

This adjustment is based on the Department approved closing cost estimate dated: _____

Latest Department Approved Closing Cost Estimate:		Current Year Inflation Factor, <i>e.g. 1.02</i>		Inflation Adjusted Closing Cost Estimate:
_____	x	_____	=	_____

This adjustment is based on the Department approved long-term care cost estimate dated: _____

Latest Department Approved Annual Long-Term Care Cost Estimate:		Current Year Inflation Factor, <i>e.g. 1.02</i>		Inflation Adjusted Annual Long-Term Care Cost Estimate:
_____	x	_____	=	_____
		Number of Years of Long Term Care Remaining:	x	_____
		Inflation Adjusted Long-Term Care Cost Estimate:	=	_____

Signature by: Owner/Operator Engineer (check what applies)

Signature

P.O. BOX 2770
Address

William T. Keene, P.E.
Name & Title

Fort Myers, FL. 33902
City, State, Zip Code

11/25/14
Date

tim@keenefl.com
E-Mail Address

239-939-0524
Telephone Number

IV. ESTIMATED CLOSING COST (check what applies)

Recalculated Cost Estimate **New Facility Cost Estimate**

- Notes: 1. Cost estimates for the time period when the extent and manner of landfill operation makes closing most exp
 2. Cost estimate must be certified by a professional engineer.
 3. Cost estimates based on third party suppliers of material, equipment and labor at fair market value.
 4. In some cases, a price quote in support of individual item estimates may be required.

Description	Unit	Number of Units	Cost / Unit	Total Cost
1. Proposed Monitoring Wells (Do not include wells already in existence.)				
	EA	_____	_____	_____
			Subtotal Proposed Monitoring Wells:	_____
2. Slope and Fill (bedding layer between waste and barrier layer):				
Excavation	CY	_____	_____	_____
Placement and Spreading	CY	_____	_____	_____
Compaction	CY	_____	_____	_____
Off-Site Material	CY	_____	_____	_____
Delivery	CY	_____	_____	_____
			Subtotal Slope and Fill:	_____
3. Cover Material (Barrier Layer):				
Off-Site Clay	CY	_____	_____	_____
Synthetics - 40 mil	SY	_____	_____	_____
Synthetics - GCL	SY	_____	_____	_____
Synthetics - Geonet	SY	_____	_____	_____
Synthetics - Other (explain) _____	_____	_____	_____	_____
			Subtotal Cover Material:	_____
4. Top Soil Cover:				
Off-Site Material	CY	_____	_____	_____
Delivery	CY	_____	_____	_____
Spread	CY	_____	_____	_____
			Subtotal Top Soil Cover:	_____
5. Vegetative Layer				
Sodding	SY	_____	_____	_____
Hydroseeding	AC	_____	_____	_____
Fertilizer	AC	_____	_____	_____
Mulch	AC	_____	_____	_____
Other (explain) _____	_____	_____	_____	_____
			Subtotal Vegetative Layer:	_____
6. Stormwater Control System:				
Earthwork	CY	_____	_____	_____
Grading	SY	_____	_____	_____
Piping	LF	_____	_____	_____
Ditches	LF	_____	_____	_____
Berms	LF	_____	_____	_____
Control Structures	EA	_____	_____	_____
Other (explain) _____	_____	_____	_____	_____
			Subtotal Stormwater Control System:	_____

Description	Unit	Number of Units	Cost / Unit	Total Cost
7. Passive Gas Control:				
Wells	EA	_____	_____	_____
Pipe and Fittings	LF	_____	_____	_____
Monitoring Probes	EA	_____	_____	_____
NSPS/Title V requirements	LS	1	_____	_____
Subtotal Passive Gas Control:				_____
8. Active Gas Extraction Control:				
Traps	EA	_____	_____	_____
Sumps	EA	_____	_____	_____
Flare Assembly	EA	_____	_____	_____
Flame Arrestor	EA	_____	_____	_____
Mist Eliminator	EA	_____	_____	_____
Flow Meter	EA	_____	_____	_____
Blowers	EA	_____	_____	_____
Collection System	LF	_____	_____	_____
Other (explain) _____	_____	_____	_____	_____
Subtotal Active Gas Extraction Control:				_____
9. Security System:				
Fencing	LF	_____	_____	_____
Gate(s)	EA	_____	_____	_____
Sign(s)	EA	_____	_____	_____
Subtotal Security System:				_____
10. Engineering:				
Closure Plan Report	LS	1	_____	_____
Certified Engineering Drawings	LS	1	_____	_____
NSPS/Title V Air Permit	LS	1	_____	_____
Final Survey	LS	1	_____	_____
Certification of Closure	LS	1	_____	_____
Other (explain) _____	_____	_____	_____	_____
Subtotal Engineering:				_____

Description	Hours	Cost / Hour	Hours	Cost / Hour	Total Cost
11. Professional Services					
	<u>Contract Management</u>		<u>Quality Assurance</u>		
P.E. Supervisor	_____	_____	_____	_____	_____
On-Site Engineer	_____	_____	_____	_____	_____
Office Engineer	_____	_____	_____	_____	_____
On-Site Technician	_____	_____	_____	_____	_____
Other (explain) _____	_____	_____	_____	_____	_____

Description	Unit	Number of Units	Cost / Unit	Total Cost
Quality Assurance Testing	LS	1	_____	_____
Subtotal Professional Services:				_____

Subtotal of 1-11 Above: _____

12. Contingency _____ % of Subtotal of 1-11 Above _____

Subtotal Contingency: _____

Estimated Closing Cost Subtotal: _____

Description	Total Cost
13. Site Specific Costs	
Mobilization	
Waste Tire Facility	\$24,210.00
Materials Recovery Facility	
Special Wastes	
Leachate Management System Modification	
Other (explain) _____	

Subtotal Site Specific Costs:	\$24,210.00

TOTAL ESTIMATED CLOSING COSTS (\$): _____ \$24,210.00

V. ANNUAL COST FOR LONG-TERM CARE

See 62-701.600(1)a.1., 62-701.620(1), 62-701.630(3)a. and 62-701.730(11)b. F.A.C. for required term length. For landfills certified closed and Department accepted, enter the remaining long-term care length as "Other" and provide years remaining. (Check Term Length) 5 Years 20 Years 30 Years Other, ___ Years

- Notes: 1. Cost estimates must be certified by a professional engineer.
 2. Cost estimates based on third party suppliers of material, equipment and labor at fair market value.
 3. In some cases, a price quote in support of individual item estimates may be required.

All items must be addressed. Attach a detailed explanation for all entries left blank.

Description	Sampling Frequency (Events / Year)	Number of Wells	(Cost / Well) / Event	Annual Cost
1. Groundwater Monitoring [62-701.510(6), and (8)(a)]				
Monthly	12	_____	_____	_____
Quarterly	4	_____	_____	_____
Semi-Annually	2	_____	_____	_____
Annually	1	_____	_____	_____
Subtotal Groundwater Monitoring:				_____
2. Surface Water Monitoring [62-701.510(4), and (8)(b)]				
Monthly	12	_____	_____	_____
Quarterly	4	_____	_____	_____
Semi-Annually	2	_____	_____	_____
Annually	1	_____	_____	_____
Subtotal Surface Water Monitoring:				_____
3. Gas Monitoring [62-701.400(10)]				
Monthly	12	_____	_____	_____
Quarterly	4	_____	_____	_____
Semi-Annually	2	_____	_____	_____
Annually	1	_____	_____	_____
Subtotal Gas Monitoring:				_____
4. Leachate Monitoring [62-701.510(5), (6)(b) and 62-701.510(8)c]				
Monthly	12	_____	_____	_____
Quarterly	4	_____	_____	_____
Semi-Annually	2	_____	_____	_____
Annually	1	_____	_____	_____
Other (explain) _____	_____	_____	_____	_____
Subtotal Leachate Monitoring:				_____

Description	Unit	Number of Units / Year	Cost / Unit	Annual Cost
5. Leachate Collection/Treatment Systems Maintenance				
<u>Maintenance</u>				
Collection Pipes	LF	_____	_____	_____
Sumps, Traps	EA	_____	_____	_____
Lift Stations	EA	_____	_____	_____
Cleaning	LS	1	_____	_____
Tanks	EA	_____	_____	_____

Description	Unit	Number of Units / Year	Cost / Unit	Annual Cost
5. (continued)				
<u>Impoundments</u>				
Liner Repair	SY	_____	_____	_____
Sludge Removal	CY	_____	_____	_____
<u>Aeration Systems</u>				
Floating Aerators	EA	_____	_____	_____
Spray Aerators	EA	_____	_____	_____
<u>Disposal</u>				
Off-site (Includes transportation and disposal)	1000 gallon	_____	_____	_____
			Subtotal Leachate Collection / Treatment Systems Maintenance:	_____
6. Groundwater Monitoring Well Maintenance				
Monitoring Wells	LF	_____	_____	_____
Replacement	EA	_____	_____	_____
Abandonment	EA	_____	_____	_____
			Subtotal Groundwater Monitoring Well Maintenance:	_____
7. Gas System Maintenance				
Piping, Vents	LF	_____	_____	_____
Blowers	EA	_____	_____	_____
Flaring Units	EA	_____	_____	_____
Meters, Valves	EA	_____	_____	_____
Compressors	EA	_____	_____	_____
Flame Arrestors	EA	_____	_____	_____
Operation	LS	<u>1</u>	_____	_____
			Subtotal Gas System Maintenance:	_____
8. Landscape Maintenance				
Mowing	AC	_____	_____	_____
Fertilizer	AC	_____	_____	_____
			Subtotal Landscape Maintenance:	_____
9. Erosion Control and Cover Maintenance				
Sodding	SY	_____	_____	_____
Regrading	AC	_____	_____	_____
Liner Repair	SY	_____	_____	_____
Clay	CY	_____	_____	_____
			Subtotal Erosion Control and Cover Maintenance:	_____
10. Storm Water Management System Maintenance				
Conveyance Maintenance	LS	<u>1</u>	_____	_____
			Subtotal Storm Water Management System Maintenance:	_____
11. Security System Maintenance				
Fences	LS	<u>1</u>	_____	_____
Gate(s)	EA	_____	_____	_____
Sign(s)	EA	_____	_____	_____
			Subtotal Security System Maintenance:	_____

Description	Unit	Number of Units / Year	Cost / Unit	Annual Cost
12. Utilities	LS	1		
			Subtotal Utilities:	
13. Leachate Collection/Treatment Systems Operation				
<u>Operation</u>				
P.E. Supervisor	HR			
On-Site Engineer	HR			
Office Engineer	HR			
OnSite Technician	HR			
Materials	LS	1		
			Subtotal Leachate Collection/Treatment Systems Operation:	
14. Administrative				
P.E. Supervisor	HR			
On-Site Engineer	HR			
Office Engineer	HR			
OnSite Technician	HR			
Other _____				
			Subtotal Administrative:	
			Subtotal of 1-14 Above:	
15. Contingency		% of Subtotal of 1-14 Above		
			Subtotal Contingency:	

Description	Unit	Number of Units / Year	Cost / Unit	Annual Cost
16. Site Specific Costs				

			Subtotal Site Specific Costs:	

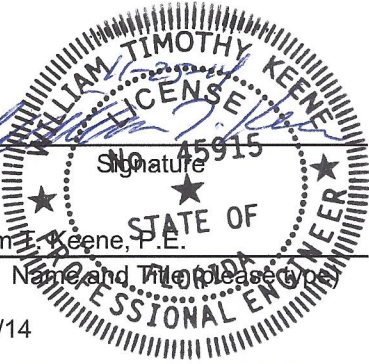
ANNUAL LONG-TERM CARE COST (\$ / YEAR): _____

Number of Years of Long-Term Care: _____

TOTAL LONG-TERM CARE COST (\$): _____

VI. CERTIFICATION BY ENGINEER

This is to certify that the Cost Estimates pertaining to the engineering features of this solid waste management facility have been examined by me and found to conform to engineering principles applicable to such facilities. In my professional judgment, the Cost Estimates are a true, correct and complete representation of the financial liabilities for closing and/or long-term care of the facility and comply with the requirements of Rule 62-701.630 F.A.C. and all other Department of Environmental Protection rules, and statutes of the State of Florida. It is understood that the Cost Estimates shall be submitted to the Department annually, revised or adjusted as required by Rule 62-701.630(4), F.A.C.


 Signature
 William T. Keene, P.E.
 Name and Title (please type)
 11/25/14
 Date

45915
 Florida Registration Number
 (please affix seal)

P.O Box 2770
 Mailing Address

Fort Myers, FL 33902
 City, State, Zip Code

tim@keenefl.com
 E-Mail address (if available)

239-939-0524
 Telephone Number

VII. SIGNATURE BY OWNER/OPERATOR


 Signature of Applicant

Rob Weber, President
 Name and Title (please type)

rob@gsimrecycling.com
 E-Mail address (if available)

3350 Metro Parkway
 Mailing Address

Fort Myers, FL 33916
 City, State, Zip Code

239-337-5865
 Telephone Number

Section 7

Facility Plan Set 24" x 36"

See separate document for plan set.