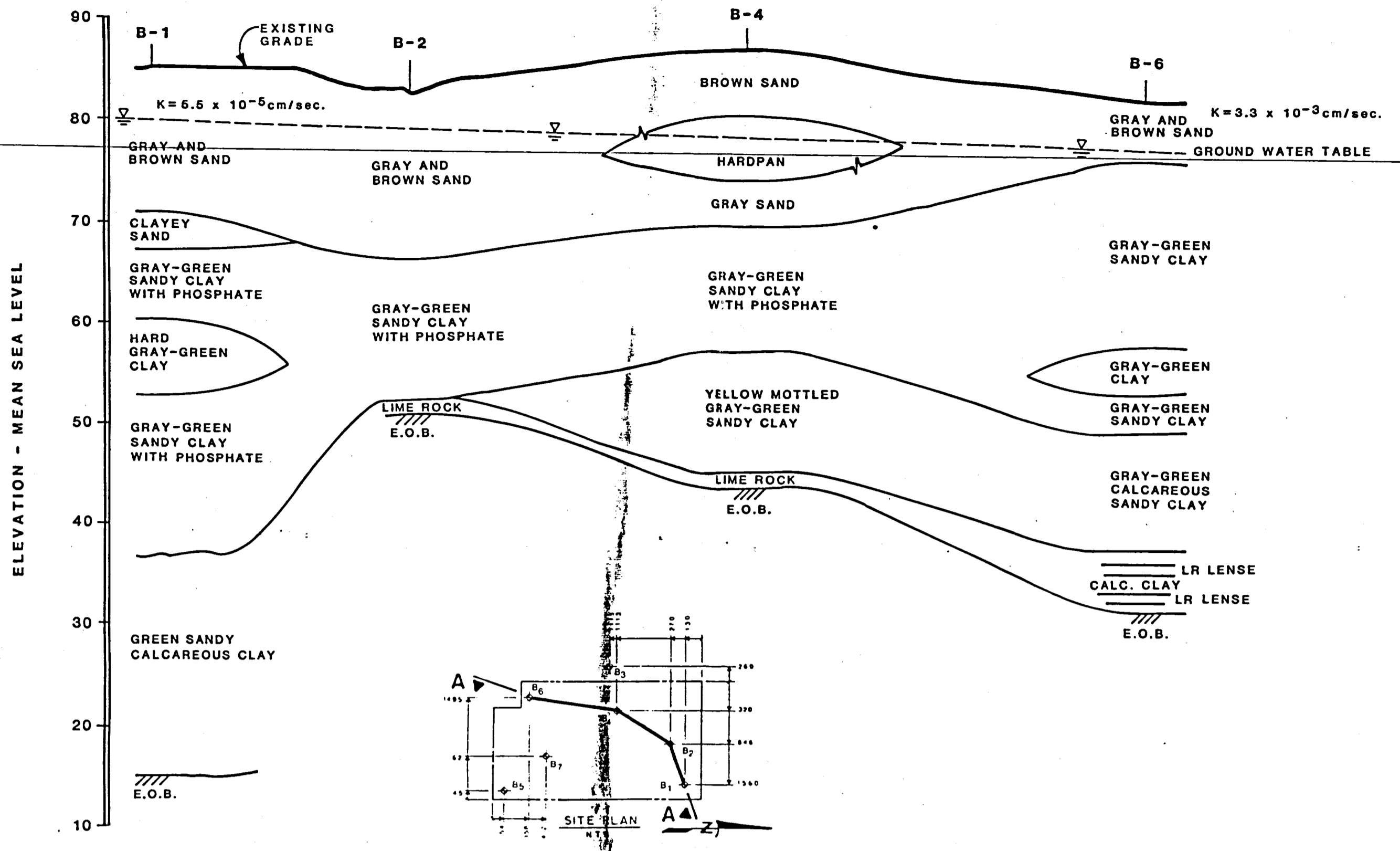
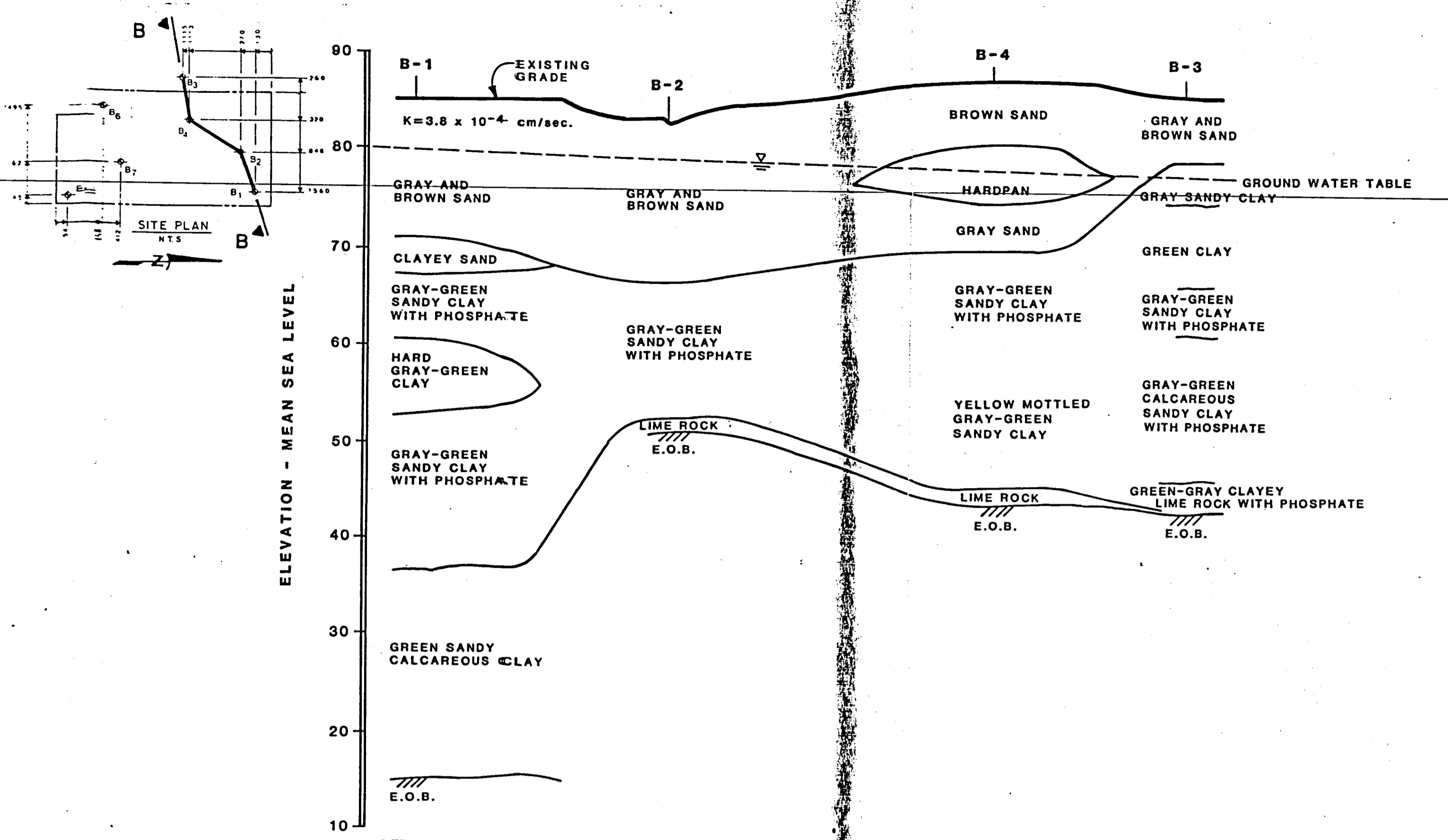


1435019 ①

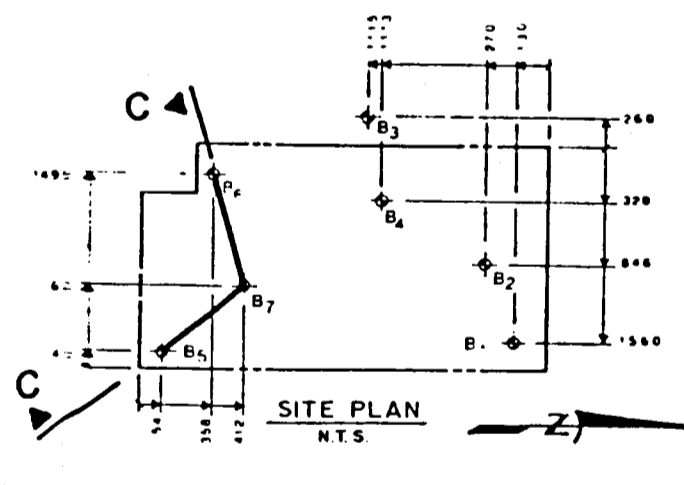


SECTION A-A



SECTION B-B

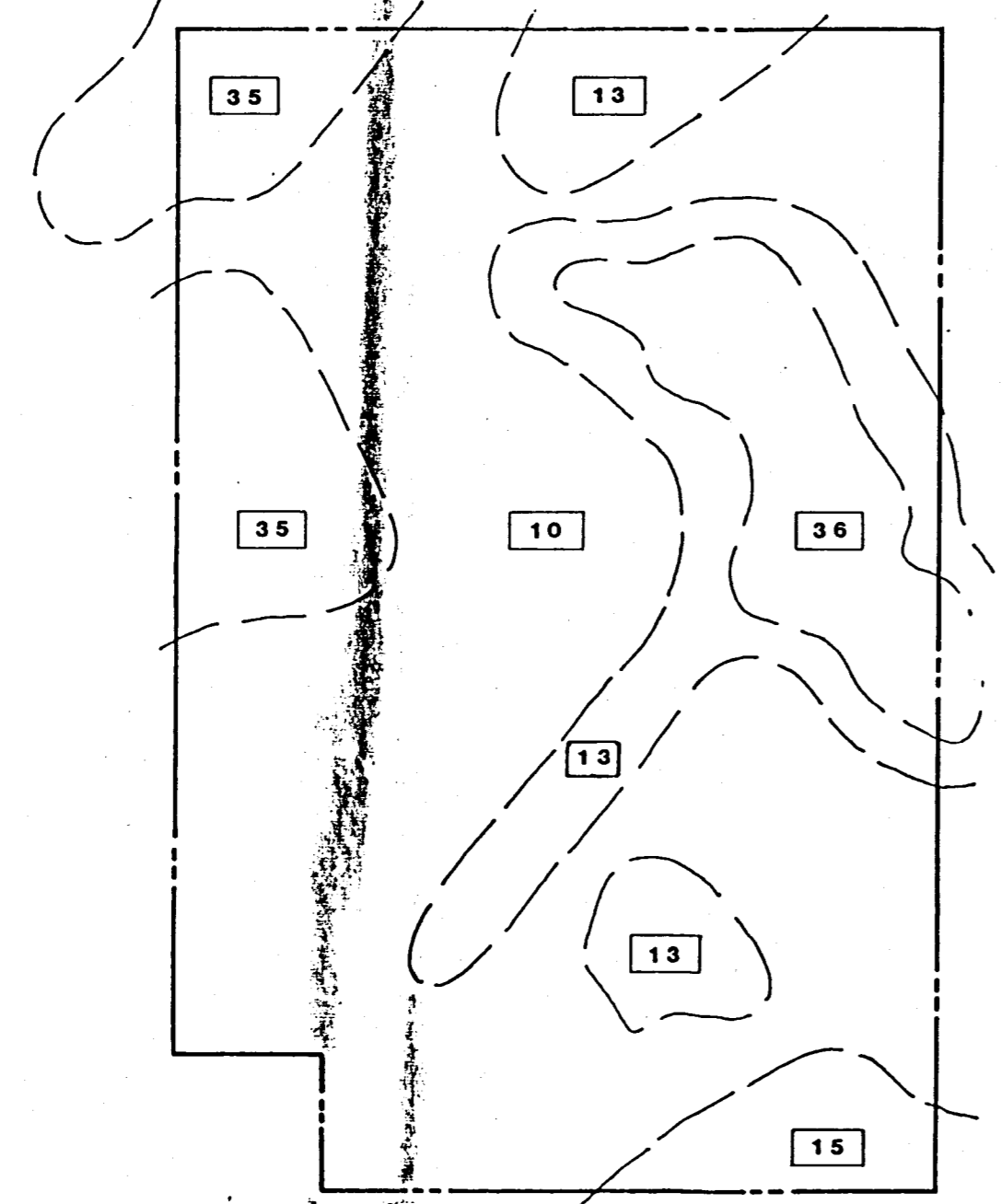
NOTES: 1.) ALL SUBSURFACE SOILS WORK CONDUCTED BY ARMAC ENGINEERING, INC., TAMPA, FLORIDA  
2.) SUBSURFACE CONDITIONS BETWEEN BORING LOCATIONS ARE INTERPOLATED.



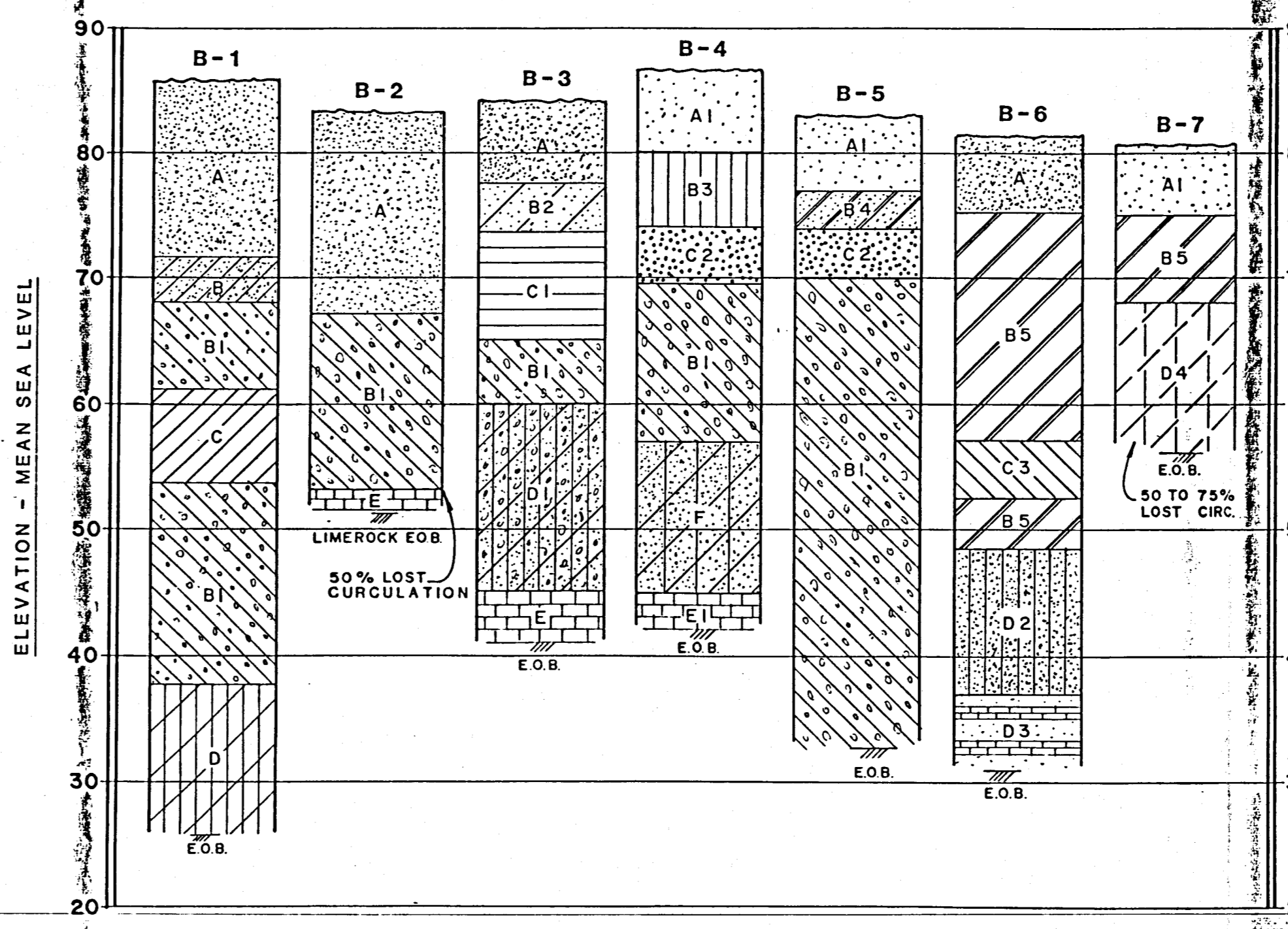
SECTION C-C

**RECORD DRAWING**  
NOTE: The information presented hereon is based upon drawings, specifications, addenda, shop drawings, modifications, etc. annotated by the contractor during the construction period to reflect the in-situ parameters of the improvements he constructed.  
The Engineer, Envisors, Inc., is not responsible for the accuracy or validity of the Record Drawing information depicted hereon.

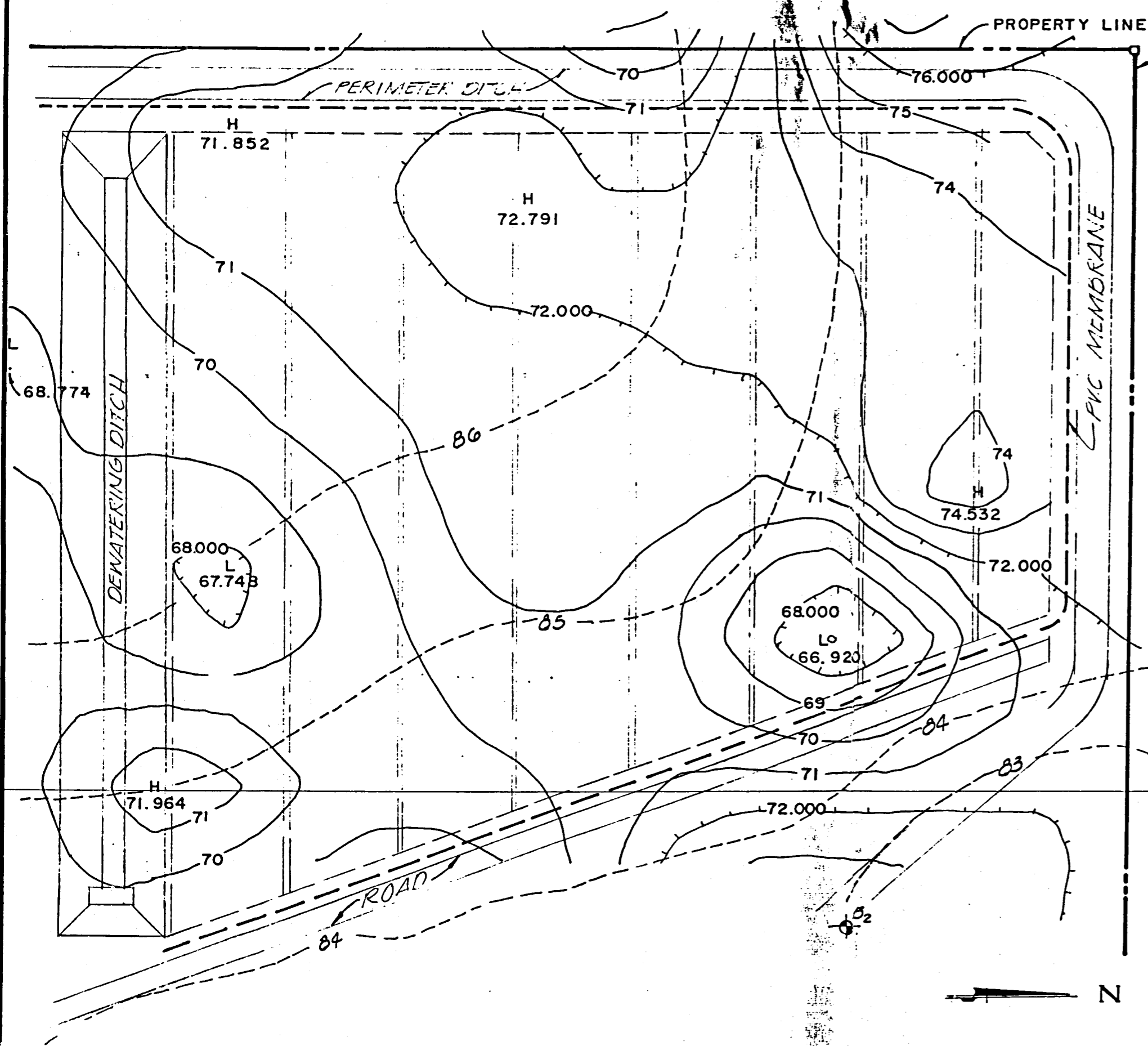
Designed	C.S.L.	10/82	No.	10/82	Revision Description	By	Chk.	Date
Drawn	D.D.							
Checked	D.D.							
Approved	D.D.	8/014						
Job No.								
Date								
<b>SOILS INFORMATION</b>								
HARDEE COUNTY, FLORIDA REGIONAL SANITARY LANDFILL								
<b>ENVISORS, Inc.</b> Consulting Civil & Environmental Engineers Economists, and Planners WINTER HAVEN, TAMPA, & MARGATE, FLORIDA								
Florida Registered Professional Engineer No. 13,097								
SHEET NUMBER								
<b>4</b>								
OF 14 SHEETS								



SURFACE SOILS ASSOCIATIONS PLAN



SOIL BORING PROFILES



CLAY LAYER ELEVATIONS

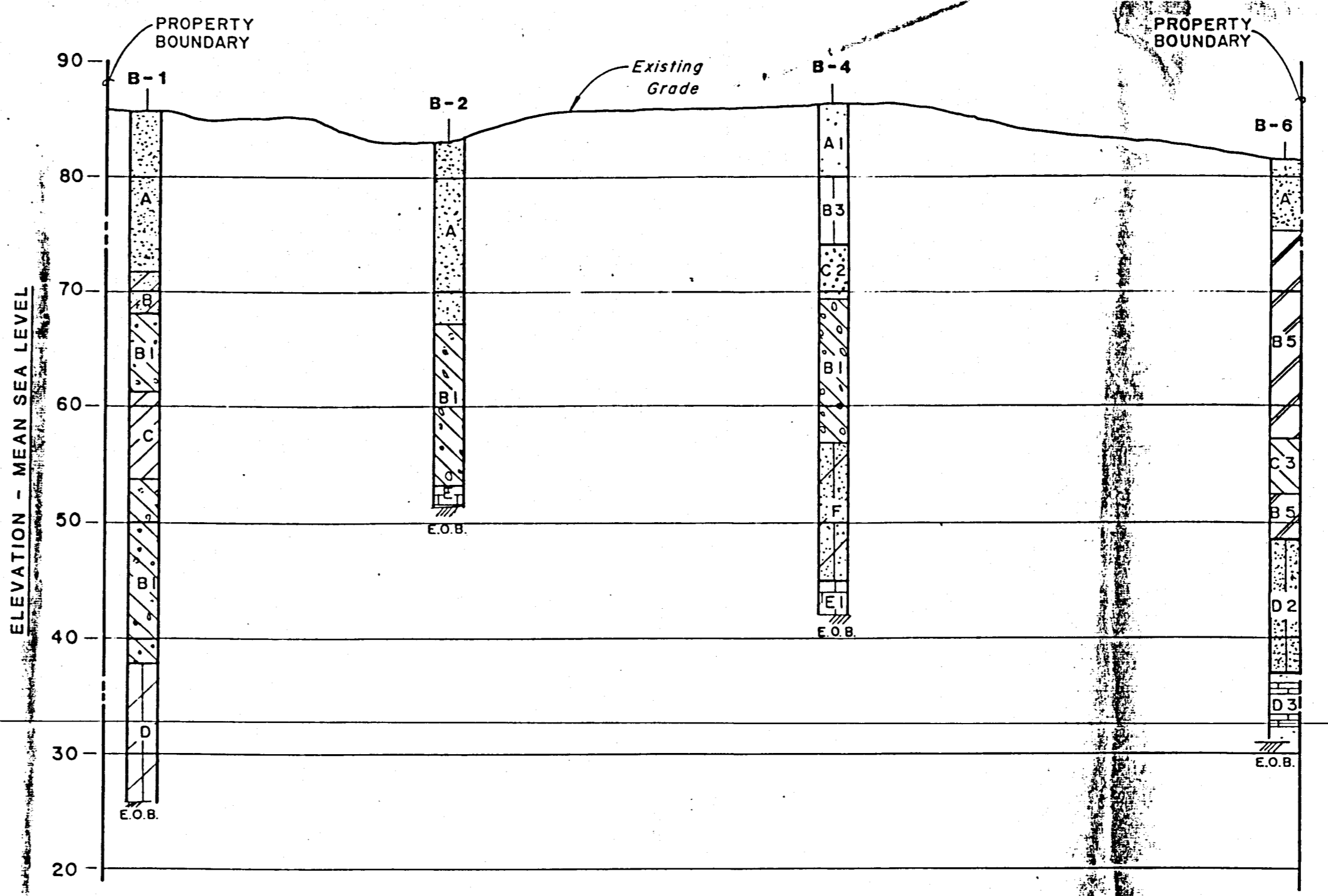
**NOTES**

1) THIS FIGURE REPRESENTS THE RESULTS OF A REFRACTION SEISMIC SURVEY OF THE NORTHWEST CORNER OF THE SITE, PERFORMED BY ARMAC ENGINEERS, INC., 8430 NORTH 40TH STREET, TAMPA, FLORIDA 33604. THIS SURVEY WAS PERFORMED IN ORDER TO ESTABLISH THE EXISTENCE OF AND ESTIMATE THE DEPTH TO THE UNDERLYING CONFINING CLAY LAYER. CORRELATION WITH KNOWN SOIL DEPTH DATA WAS ESTABLISHED BY PERFORMING THE SURVEY IN CLOSE PROXIMITY TO PREVIOUSLY PERFORMED SPT BORINGS B-2 AND B-4. CHARACTERISTIC COMPRESSIVE WAVE VELOCITIES WERE ESTABLISHED FOR BOTH THE UPPER SURFICIAL SOILS AND UNDERLYING CLAY SOILS. THESE AVERAGE COMPRESSIVE WAVE VELOCITIES WERE FOUND TO BE 1352 AND 4824, RESPECTIVELY. THIS HIGH VELOCITY DIFFERENTIAL WAS USED TO IDENTIFY THESE SEPARATE SOIL STRATA.

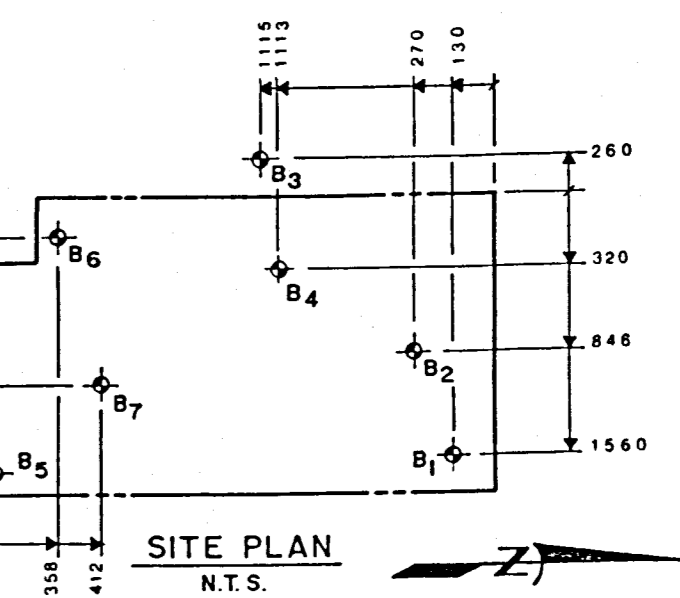
THE FIGURE SHOWS THE RESULTS OF THIS SEISMOGRAPH INVESTIGATION WHICH INDICATE THAT THE UNDERLYING COHESIVE CLAY LAYER IS ESTIMATED TO LIE AT DEPTHS RANGING FROM ABOUT 8.4 TO 18.0 FEET BELOW GROUND SURFACE (ELEVATION 67.8 TO 77.3 FEET MSL). THE COHESIVE SOIL STRATA WAS FOUND TO BE CONTINUOUS IN THE SUBJECT AREA, BUT POSSIBLE HIGH VELOCITY HARDPAN OR SURFICIAL CLAY LAYERS WERE FOUND TO EXIST AT THREE OUT OF 22 SURVEY GRID LOCATIONS. THESE NEAR-SURFACE HIGH VELOCITY SOIL LAYERS PRODUCED ANOMALOUS WAVE REVERALS PREVENTING DEEPER SOIL ANALYSIS AT THESE LOCATIONS.

2) CLAY CONTOURS AT ONE FOOT (1') INTERVALS.

NOTE: ALL SUBSURFACE SOILS WORK CONDUCTED BY ARMAC ENGINEERING, INC., TAMPA, FLORIDA.



SECTION X-X



**LEGEND**

- A GRAY & BROWN SAND
- A1 BROWN SAND
- B CLAYEY SAND
- B1 GRAY-GREEN SANDY CLAY W/ PHOSPHATE
- B2 GRAY SANDY CLAY
- B3 HARDPAN
- B4 GRAY CLAYEY SAND
- B5 GRAY-GREEN SANDY CLAY
- C HARD GRAY-GREEN CLAY
- C1 GREEN CLAY
- C2 GRAY SAND
- C3 GRAY-GREEN CLAY
- D GREEN SANDY CALCAREOUS
- D1 GRAY-GREEN CALCAREOUS SANDY CLAY W/ PHOSPHATE
- D2 GRAY-GREEN CALCAREOUS
- D3 GRAY-GREEN CALCAREOUS CLAY W/ L.R. LENSES
- D4 GRAY TO TAN CALCAREOUS SANDY CLAY
- E GREENISH GRAY CLAYEY LIMEROCK W/ PHOSPHATE
- E1 GREENISH GRAY LIMEROCK & SANDY CLAY
- F YELLOW MOTTLED GRAY-GREEN SANDY CLAY

**LEGEND**

- A GRAY & BROWN SAND
- A1 BROWN SAND
- B CLAYEY SAND
- B1 GRAY-GREEN SANDY CLAY W/ PHOSPHATE
- B2 GRAY SANDY CLAY
- B3 HARDPAN
- B4 GRAY CLAYEY SAND
- B5 GRAY-GREEN SANDY CLAY
- C HARD GRAY-GREEN CLAY
- C1 GREEN CLAY
- C2 GRAY SAND
- C3 GRAY-GREEN CLAY
- D GREEN SANDY CALCAREOUS
- D1 GRAY-GREEN CALCAREOUS SANDY CLAY W/ PHOSPHATE
- D2 GRAY-GREEN CALCAREOUS
- D3 GRAY-GREEN CALCAREOUS CLAY W/ L.R. LENSES
- D4 GRAY TO TAN CALCAREOUS SANDY CLAY
- E GREENISH GRAY CLAYEY LIMEROCK W/ PHOSPHATE
- E1 GREENISH GRAY LIMEROCK & SANDY CLAY
- F YELLOW MOTTLED GRAY-GREEN SANDY CLAY

RECORD DRAWING

NOTE: The information presented hereon is based upon drawings, specifications, addenda, shop drawings, modifications, etc. annotated by the contractor during the construction period to reflect the in-situ parameters of the improvements he constructed.

This Engineer, Envisors, Inc., is not responsible for the accuracy or validity of the Record Drawing information depicted hereon.

Designed	C.S.L.			
Drawn	D.D.			
Checked	D.D.			
Approved	D.D.			
Job No.	81014			
Date	10/82			
Revision Description				
No.				

By: *Alv Street*

CH. 20 1/4/83

HARDEE COUNTY, FLORIDA  
REGIONAL SANITARY LANDFILL

**SOILS INFORMATION**

ENVISORS, Inc.  
Consulting Civil & Environmental Engineers  
Economists and Planners  
WINTER HAVEN, TAMPA, & MARGATE, FLORIDA

FLORIDA REGISTERED PROFESSIONAL ENGINEER No. 13097

SHEET NUMBER

OF 14 SHEETS