

# BRANTLEY ENGINEERING, LLC



October 1, 2015

Mr. F. Thomas Lubozynski, P.E.  
Environmental Administrator  
Florida Department of Environmental Protection (FDEP), Central District  
3319 Maguire Blvd., Suite 232  
Orlando, Florida 32803-3767

**Subject: Supplemental Documentation to the Final Certification Report for  
Cell 11 Construction and Quality Certification Report  
JED Solid Waste Management Facility (WACS #89544)  
St. Cloud, Osceola County, Florida  
FDEP Permit No. SC49-0199726-017**

Dear Mr. Lubozynski:

In response to an email from Mr. Allen Rainey of your staff, dated September 25, 2015, Brantley Engineering, LLC is writing to provide supplemental documentation to the previously submitted Final Certification Report for Cell 11 Construction and Quality Certification Report for the JED Solid Waste Management Facility, submitted on September 3, 2015.

All electrical work related to the leachate sump management controls was completed by Johns Electrical Services and a Duke Energy service meter installed on September 24, 2015. Final installation of the leachate pumps and controls were subsequently completed on September 30, 2015. Absolute Water, Inc. also performed functionality testing on this date. The installation and testing forms for the Cell 11 primary and secondary leachate pumps and controls have been uploaded to the FDEP FTP/Website in the "Supplemental File Folder". RCS Excavation assisted Absolute Water, Inc. during testing to be sure all valves and fittings were correctly installed and not leaking.

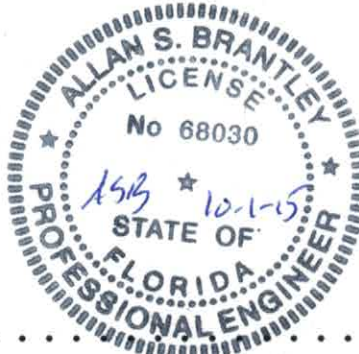
The Moisture/Density Test Location Figures have also been uploaded to the FDEP FTP/Website in the "Supplemental File Folder". Please note that these are Figures 8 and can be placed behind Figure 7 in the overall document. I have also included an updated Table of Contents Sheet to replace the previously submitted TOC which did not call out Figures 8.

If you have any questions or need additional information regarding this certification, please contact me at (678)-427-2533 or Mr. Mike Kaiser with Progressive Waste Solutions at (904)-673-0446.

Sincerely,  
Brantley Engineering, LLC

Allan S. Brantley, Florida PE#68030  
President

Cc: Mike Kaiser – PWS  
Attachments



BRANTLEY ENGINEERING, LLC

13933 Tree Loft Road  
Milton, Georgia 30004  
Phone: 678-427-2533  
Fax: 415-598-2533  
abrantley@brantleyeng.com

5.4.1	Conformance Testing and Documentation.....	22
5.4.2	Field Monitoring Activities.....	23
5.5	CQA of Primary Geocomposite .....	24
5.5.1	Conformance Testing and Documentation.....	24
5.5.2	Field Monitoring Activities.....	25
5.6	CQA of Non-Woven Geotextile.....	26
5.6.1	Conformance Testing and Documentation.....	26
5.6.2	Field Monitoring Activities.....	26
5.7	Interface Friction Testing .....	27
<b>6</b>	<b>CQA – LEACHATE COLLECTION AND REMOVAL SYSTEM .....</b>	<b>29</b>
6.1	General .....	29
6.2	HDPE Pipe .....	30
6.3	Granular Drainage Materials .....	30
6.4	Pressure Testing .....	31
6.5	Sump Pumps and Control Panel.....	31
<b>7</b>	<b>CQA – OTHER CONSTRUCTION ACTIVITIES .....</b>	<b>32</b>
7.1	Overview .....	32
7.2	Storm Water Drainage Structure .....	32
7.3	Geomembrane Flap at Intercell Berm .....	32
7.4	Landfill Gas System.....	32
<b>8</b>	<b>SUMMARY .....</b>	<b>34</b>

**PROJECT FIGURES**

- 1 Asbuilt Top of Subbase
- 2 Asbuilt Top of Subbase and Top of Protective Cover  
Control Point Table
- 3 Asbuilt Leak Detection System
- 4 Asbuilt Leachate Collection and Sump
- 5 Asbuilt Top of Protective Cover
- 6 Cell 11 Secondary Layer 60 Mil HDPE As-Built
- 7 Cell 11 Primary Layer 60 Mil HDPE As-Built
- 8 Moisture/Density Test Locations (Lifts 1 thru 22)

EPG SurePump™ Installation Record

EPG Job No. 15-11934

Installer's Name Absolute Water Inc.
Address 1408 Hamlin Ave. Suite E
City St. Cloud State Fl Zip 34771
Phone 407-891-3005 Fax 407-957-9215
Contact name Willis Rigdon

Owner's Name WSI
Address 1501 Omni Way
City St. Cloud State Fl Zip 34773
Phone 904-673-0446 Fax
Contact name Mike Kaiser

Sump Name/ ID Cell 11 Date Installed 9-30-2015

Leachate or Condensate Temp °F Or °C

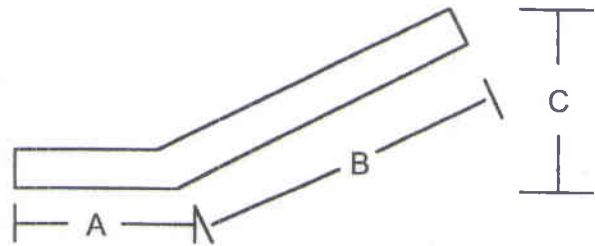
Pump:

Model No. WSDPT 20-3
Rating: GPM@ Ft. TDH
HP 5 Voltage 480 Phase 3
Actual Pump Delivery GPM@ PSI

Operating Cycle ON (Min/Hr) OFF (Min/Hr) (Circle Min. or Hr. as appropriate)

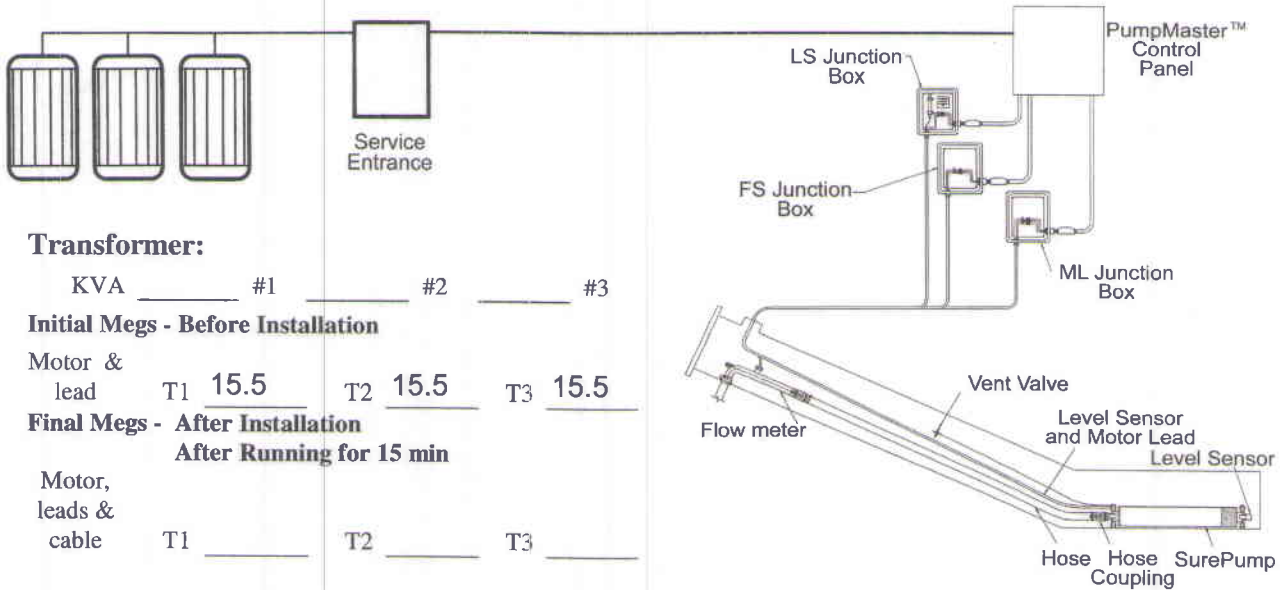
Side Slope Riser Information:

Slope :1
Length of riser Pipe (A+B) 80 ft.
Vertical Distance = Sump to Top of Riser Pipe (C) ft.
Riser ID Pri 1 SDR
Distance From Top of Riser Pipe to Controller 15 ft.



Power Supply:

Cable: Service Entrance to Control Distance 15 ft Wire Size 8 AWG/MCM
Copper X Jacketed Aluminum Individual conductors
Cable: Control to Motor ft AWG/MCM
Copper X Jacketed



**Transformer:**

KVA \_\_\_\_\_ #1 \_\_\_\_\_ #2 \_\_\_\_\_ #3

**Initial Megs - Before Installation**

Motor & lead T1 15.5 T2 15.5 T3 15.5

**Final Megs - After Installation**  
After Running for 15 min

Motor, leads & cable T1 \_\_\_\_\_ T2 \_\_\_\_\_ T3 \_\_\_\_\_

**Incoming Voltage:**

No Load L1-L2 490 L2-L3 490 L1-L3 491  
Full Load L1-L2 \_\_\_\_\_ L2-L3 \_\_\_\_\_ L1-L3 \_\_\_\_\_

**Running Amps:**

**Hookup:1**

Full Load L1 7.4 L2 7.4 L3 7.3 % unbalanced \_\_\_\_\_

**Hookup:2**

Full Load L1 \_\_\_\_\_ L2 \_\_\_\_\_ L3 \_\_\_\_\_ % unbalanced \_\_\_\_\_

**Hookup:3**

Full Load L1 \_\_\_\_\_ L2 \_\_\_\_\_ L3 \_\_\_\_\_ % unbalanced \_\_\_\_\_

Ground wire size 8 + 3 ot AWG/MCM

DC Ground Current \_\_\_\_\_ mA Ground Test \_\_\_\_\_ Ohms

Motor Surge Protection  Yes \_\_\_\_\_ No

**Control Panel:**

Model # \_\_\_\_\_

**Short Circuit Device**

Circuit Breaker \_\_\_\_\_ Rating \_\_\_\_\_ Setting \_\_\_\_\_  
Fuses \_\_\_\_\_ Type \_\_\_\_\_ Rating \_\_\_\_\_  
\_\_\_\_\_ Standard \_\_\_\_\_ Time Delay \_\_\_\_\_

**Controls are Grounded to:**

Motor  
 Rod  
 Power Supply

**Start Overloads:**

Set at \_\_\_\_\_ amps

Name: Willis Rigdon

Company Absolute Water Inc.

Date 9-30-2015

EPG SurePump™ Installation Record

EPG Job No. 15-11934

Installer's Name Absolute Water Inc.

Address 1408 Hamlin Ave. Suite E

City St. Cloud

State Fl

Zip 34771

Phone 407-891-3005

Fax 407-957-9215

Contact name Willis Rigdon

Owner's Name WSI

Address 1501 Omni Way

City St. Cloud

State Fl

Zip 34773

Phone 904-673-0446

Fax

Contact name Mike Kaiser

Sump Name/ ID Cell 11

Date Installed 9-30-2015

Leachate or Condensate Temp °F Or °C

Pump:

Model No. WSDPT 20-3

Rating: GPM@ Ft. TDH

HP 5 Voltage 480 Phase 3

Actual Pump Delivery GPM@ PSI

Operating Cycle ON (Min/Hr) OFF (Min/Hr)

(Circle Min. or Hr. as appropriate)

Side Slope Riser Information:

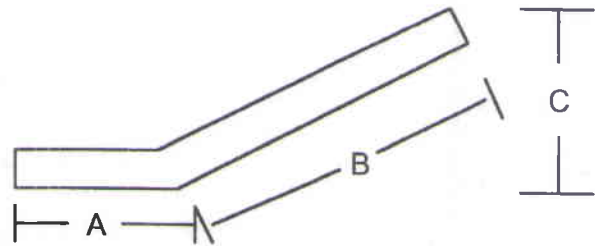
Slope :1

Length of riser Pipe (A+B) 80 ft.

Vertical Distance = Sump to Top of Riser Pipe (C) ft.

Riser ID Pri 2 SDR

Distance From Top of Riser Pipe to Controller 15 ft.



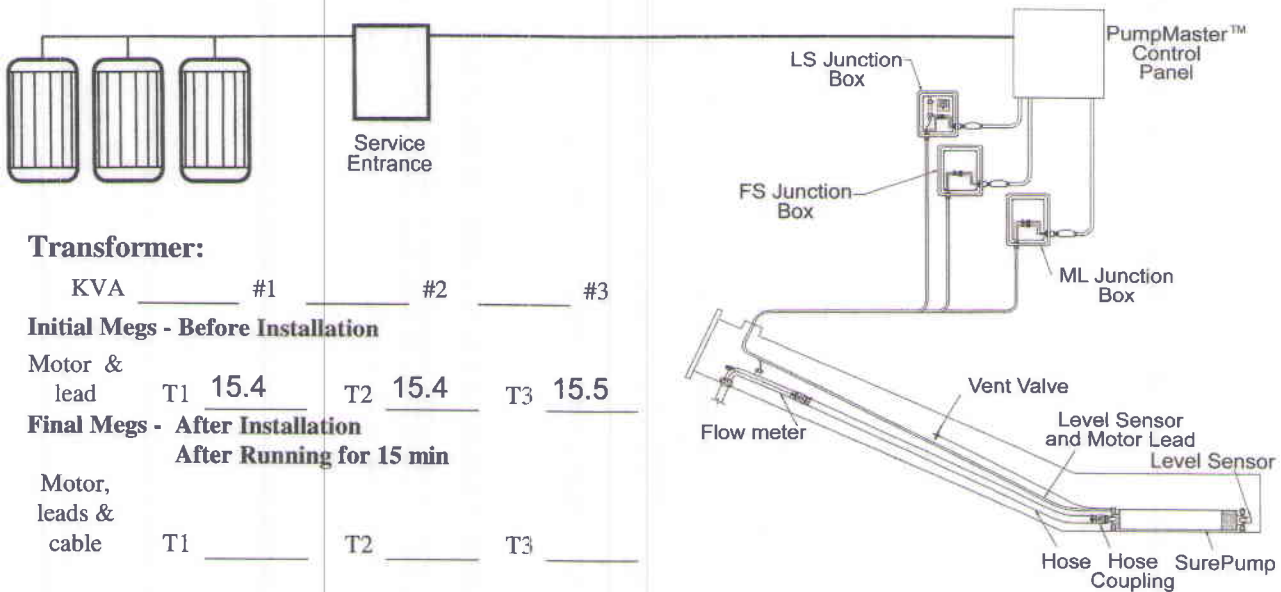
Power Supply:

Cable: Service Entrance to Control Distance 15 ft Wire Size 8 AWG/MCM

Copper X Jacketed Aluminum Individual conductors

Cable: Control to Motor ft AWG/MCM

Copper X Jacketed



**Transformer:**

KVA \_\_\_\_\_ #1 \_\_\_\_\_ #2 \_\_\_\_\_ #3

**Initial Megs - Before Installation**

Motor & lead T1 15.4 T2 15.4 T3 15.5

**Final Megs - After Installation**  
After Running for 15 min

Motor, leads & cable T1 \_\_\_\_\_ T2 \_\_\_\_\_ T3 \_\_\_\_\_

**Incoming Voltage:**

No Load L1-L2 490 L2-L3 490 L1-L3 491  
Full Load L1-L2 \_\_\_\_\_ L2-L3 \_\_\_\_\_ L1-L3 \_\_\_\_\_

**Running Amps:**

**Hookup:1**

Full Load L1 7.4 L2 7.4 L3 7.4 % unbalanced \_\_\_\_\_

**Hookup:2**

Full Load L1 \_\_\_\_\_ L2 \_\_\_\_\_ L3 \_\_\_\_\_ % unbalanced \_\_\_\_\_

**Hookup:3**

Full Load L1 \_\_\_\_\_ L2 \_\_\_\_\_ L3 \_\_\_\_\_ % unbalanced \_\_\_\_\_

Ground wire size 8 + 3 ot AWG/MCM

DC Ground Current \_\_\_\_\_ mA Ground Test \_\_\_\_\_ Ohms

Motor Surge Protection  Yes \_\_\_\_\_ No

**Control Panel:**

Model # \_\_\_\_\_

**Short Circuit Device**

Circuit Breaker \_\_\_\_\_ Rating \_\_\_\_\_ Setting \_\_\_\_\_  
Fuses \_\_\_\_\_ Type \_\_\_\_\_ Rating \_\_\_\_\_  
\_\_\_\_\_ Standard \_\_\_\_\_ Time Delay \_\_\_\_\_

**Controls are Grounded to:**

Motor  
 Rod  
 Power Supply

**Start Overloads:**

Set at \_\_\_\_\_ amps

Name: Willis Rigdon

Company Absolute Water Inc.

Date 9-30-2015

EPG SurePump™ Installation Record

EPG Job No. 15-11934

Installer's Name Absolute Water Inc.
Address 1408 Hamlin Ave. Suite E
City St. Cloud State FL Zip 34771
Phone 407-891-3005 Fax 407-957-9215
Contact name Willis Rigdon

Owner's Name WSI
Address 1501 Omni Way
City St. Cloud State FL Zip 34773
Phone 904-673-0446 Fax
Contact name Mike Kaiser

Sump Name/ ID Cell 10 Date Installed 9-30-2015

Leachate or Condensate Temp °F Or °C

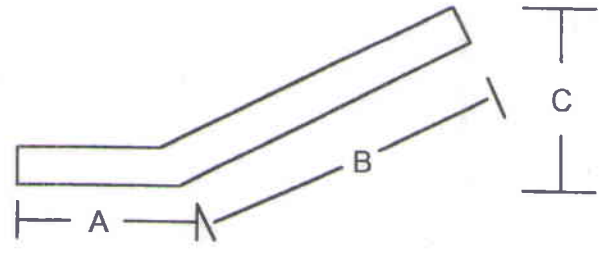
Pump:

Model No. WSDPT 8-5
Rating: GPM@ Ft. TDH
HP 1.5 Voltage 480 Phase 3
Actual Pump Delivery GPM@ PSI

Operating Cycle ON (Min/Hr) OFF (Min/Hr) (Circle Min. or Hr. as appropriate)

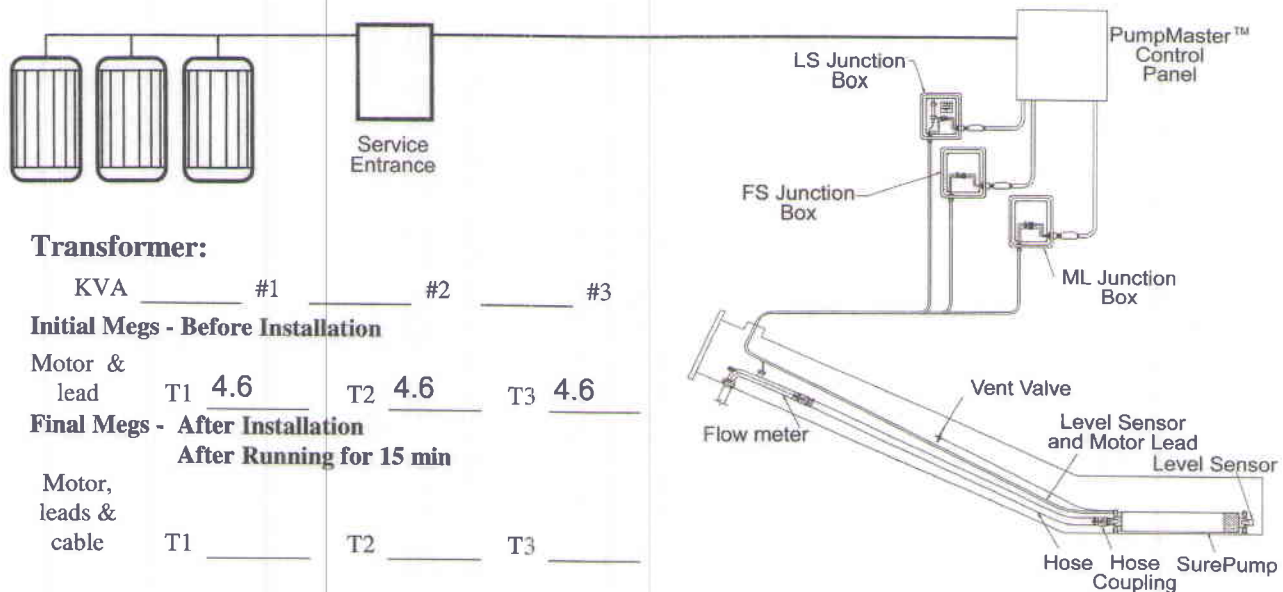
Side Slope Riser Information:

Slope :1
Length of riser Pipe (A+B) 77 ft.
Vertical Distance = Sump to Top of Riser Pipe (C) ft.
Riser ID Sec. SDR
Distance From Top of Riser Pipe to Controller 10 ft.



Power Supply:

Cable: Service Entrance to Control Distance 15 ft Wire Size 8 AWG/MCM
Copper X Jacketed Aluminum Individual conductors
Cable: Control to Motor ft AWG/MCM
Copper X Jacketed



**Transformer:**

KVA \_\_\_\_\_ #1 \_\_\_\_\_ #2 \_\_\_\_\_ #3

**Initial Megs - Before Installation**

Motor & lead T1 4.6 T2 4.6 T3 4.6

**Final Megs - After Installation**  
After Running for 15 min

Motor, leads & cable T1 \_\_\_\_\_ T2 \_\_\_\_\_ T3 \_\_\_\_\_

**Incoming Voltage:**

No Load L1-L2 490 L2-L3 490 L1-L3 491  
Full Load L1-L2 \_\_\_\_\_ L2-L3 \_\_\_\_\_ L1-L3 \_\_\_\_\_

**Running Amps:**

**Hookup:1**

Full Load L1 2.4 L2 2.5 L3 2.4 % unbalanced \_\_\_\_\_

**Hookup:2**

Full Load L1 \_\_\_\_\_ L2 \_\_\_\_\_ L3 \_\_\_\_\_ % unbalanced \_\_\_\_\_

**Hookup:3**

Full Load L1 \_\_\_\_\_ L2 \_\_\_\_\_ L3 \_\_\_\_\_ % unbalanced \_\_\_\_\_

Ground wire size 8 + 3 ot AWG/MCM

DC Ground Current \_\_\_\_\_ mA Ground Test \_\_\_\_\_ Ohms

Motor Surge Protection  Yes \_\_\_\_\_ No

**Control Panel:**

Model # \_\_\_\_\_

**Short Circuit Device**

Circuit Breaker \_\_\_\_\_ Rating \_\_\_\_\_ Setting \_\_\_\_\_  
Fuses \_\_\_\_\_ Type \_\_\_\_\_ Rating \_\_\_\_\_  
\_\_\_\_\_ Standard \_\_\_\_\_ Time Delay \_\_\_\_\_

**Controls are Grounded to:**

Motor  
 Rod  
 Power Supply

**Start Overloads:**

Set at \_\_\_\_\_ amps

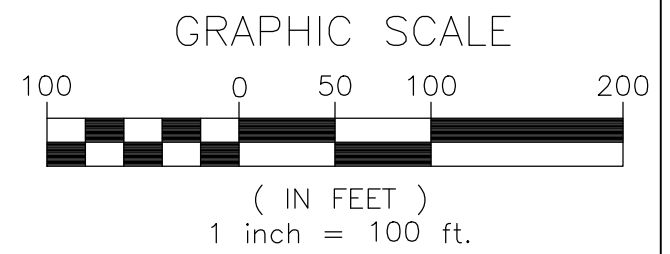
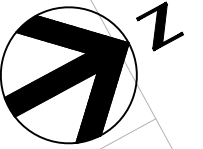
Name: Willis Rigdon

Company Absolute Water Inc.

Date 9-30-2015



**Figure 8**  
**Moisture/Density Test Locations**  
**(Lifts 1 thru 22)**



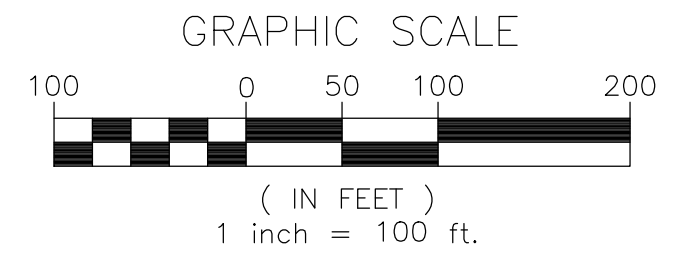
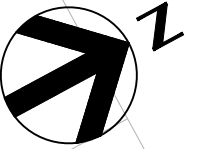
PROJECT MANAGER:	A. BRANTLEY, PE			
DESIGNED BY:	A. BRANTLEY, PE			
QC'ED BY:	S. NEJAD, PE			
DRAWN BY:	A. BRANTLEY, PE			
ISSUE	0	8/31/15	BRANTLEY ENGINEERING, LLC.	INITIAL ISSUE
PROJECT NUMBER	1014-101			

**JED SOLID WASTE MANAGEMENT FACILITY  
CELL 11 CONSTRUCTION**

**MOISTURE/DENSITY  
( LIFT 1 ) TEST LOCATIONS ( LIFT 1 )  
FOR SUBGRADE**

 SCALE: 1" = 100'	FILENAME 11X17 GRID LAYOUT DIRECTORY JED/CELL 11/DWG	<b>8</b> FIGURE
----------------------	---	--------------------

11x17 Density Grid.dwg



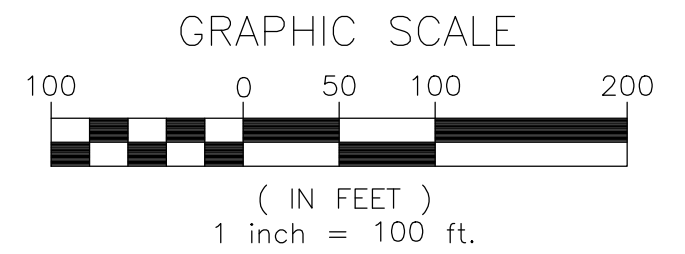
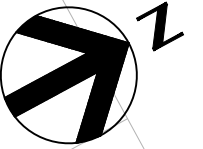
PROJECT MANAGER:	A. BRANTLEY, PE		
DESIGNED BY:	A. BRANTLEY, PE		
QC'ED BY:	S. NEJAD, PE		
DRAWN BY:	A. BRANTLEY, PE		
ISSUE	DATE	RESPONSIBLE ENG.	DESCRIPTION
0	8/31/15	BRANTLEY ENGINEERING, LLC.	INITIAL ISSUE
PROJECT NUMBER		1014-101	

**JED SOLID WASTE MANAGEMENT FACILITY  
CELL 11 CONSTRUCTION**

**MOISTURE/DENSITY  
( LIFT 2 ) TEST LOCATIONS (LIFT 2)  
FOR SUBGRADE**

 SCALE: 1" = 100'	FILENAME: 11X17 GRID LAYOUT DIRECTORY: JED/CELL 11/DWG	<b>8</b> FIGURE
----------------------	---	--------------------

11x17 Density Grid.dwg



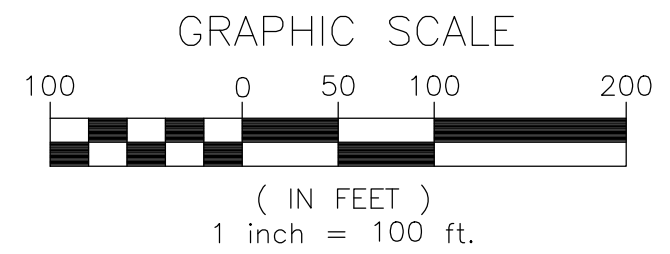
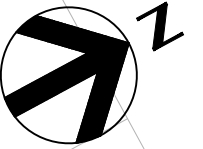
PROJECT MANAGER:	A. BRANTLEY, PE			
DESIGNED BY:	A. BRANTLEY, PE			
QC'ED BY:	S. NEJAD, PE			
DRAWN BY:	A. BRANTLEY, PE			
ISSUE	0	8/31/15	BRANTLEY ENGINEERING, LLC.	INITIAL ISSUE
PROJECT NUMBER	1014-101			

**JED SOLID WASTE MANAGEMENT FACILITY  
CELL 11 CONSTRUCTION**

**MOISTURE/DENSITY  
( LIFT 3 ) TEST LOCATIONS ( LIFT 3 )  
FOR SUBGRADE**

 SCALE: 1" = 100'	FILENAME: 11X17 GRID LAYOUT DIRECTORY: JED/CELL 11/DWG	<b>8</b> FIGURE
----------------------	---	--------------------

11X17 Density Grid.dwg



11x17 Density Grid.dwg

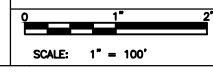


ISSUE	DATE	RESPONSIBLE ENG.	DESCRIPTION
0	8/31/15	BRANTLEY ENGINEERING, LLC.	INITIAL ISSUE

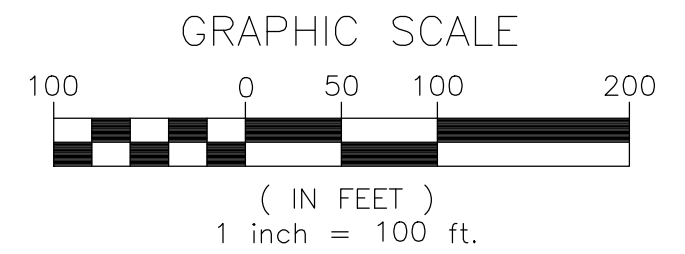
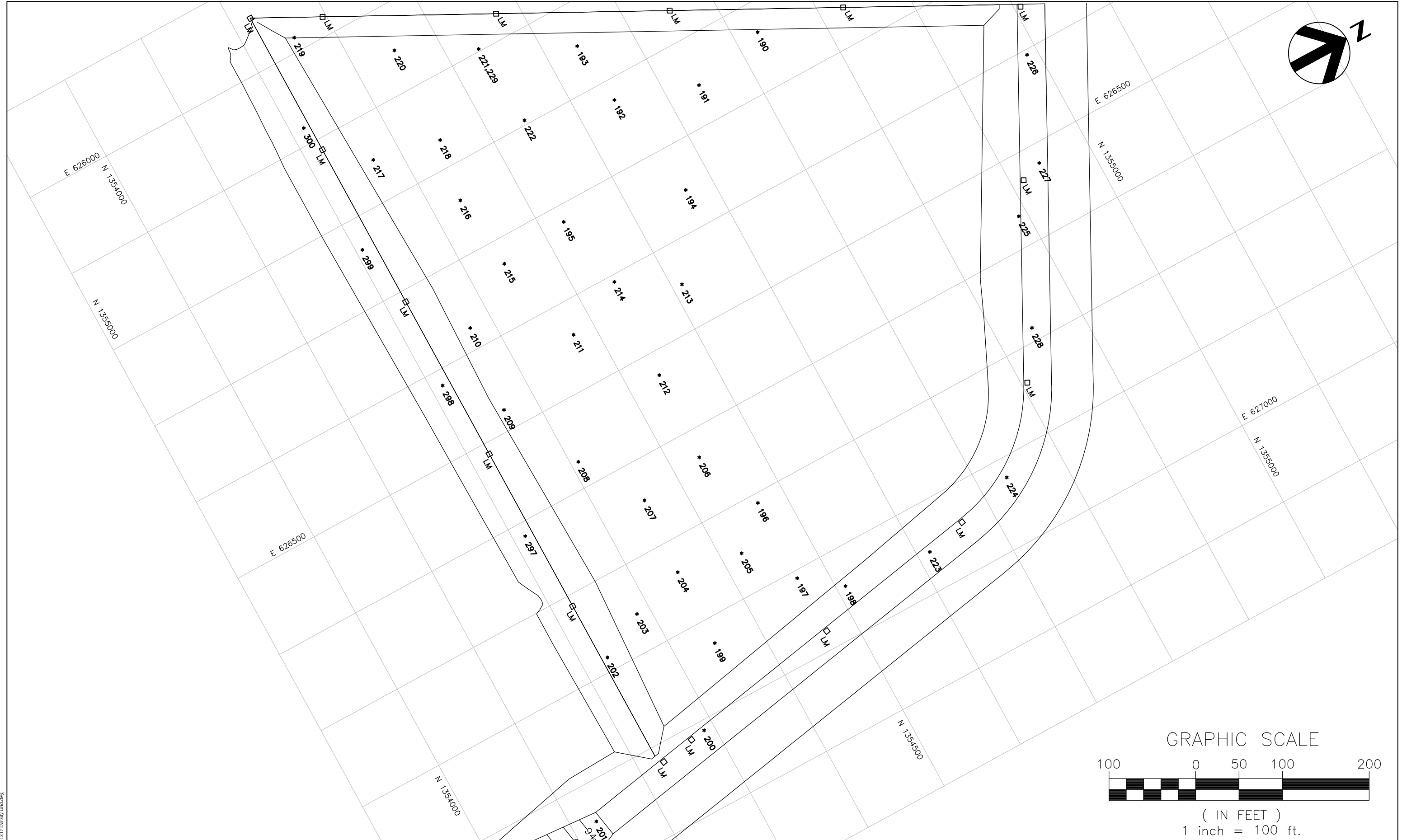
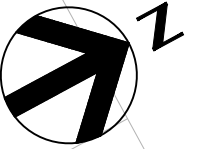
PROJECT MANAGER:	A. BRANTLEY, PE
DESIGNED BY:	A. BRANTLEY, PE
QC'ED BY:	S. NEJAD, PE
DRAWN BY:	A. BRANTLEY, PE
PROJECT NUMBER	1014-101

**JED SOLID WASTE MANAGEMENT FACILITY  
CELL 11 CONSTRUCTION**

**MOISTURE/DENSITY  
( LIFT 4 ) TEST LOCATIONS ( LIFT 4 )  
FOR SUBGRADE**



FILENAME	11x17 GRID LAYOUT
DIRECTORY	JED/CELL 11/DWG



11x17 Density Grid.dwg

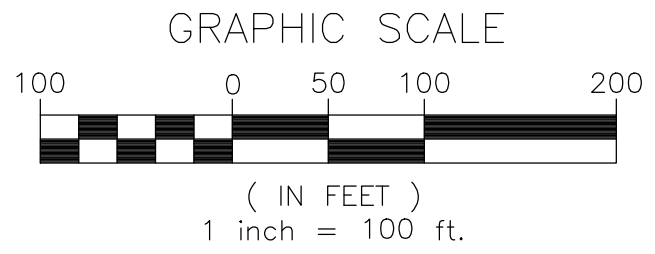
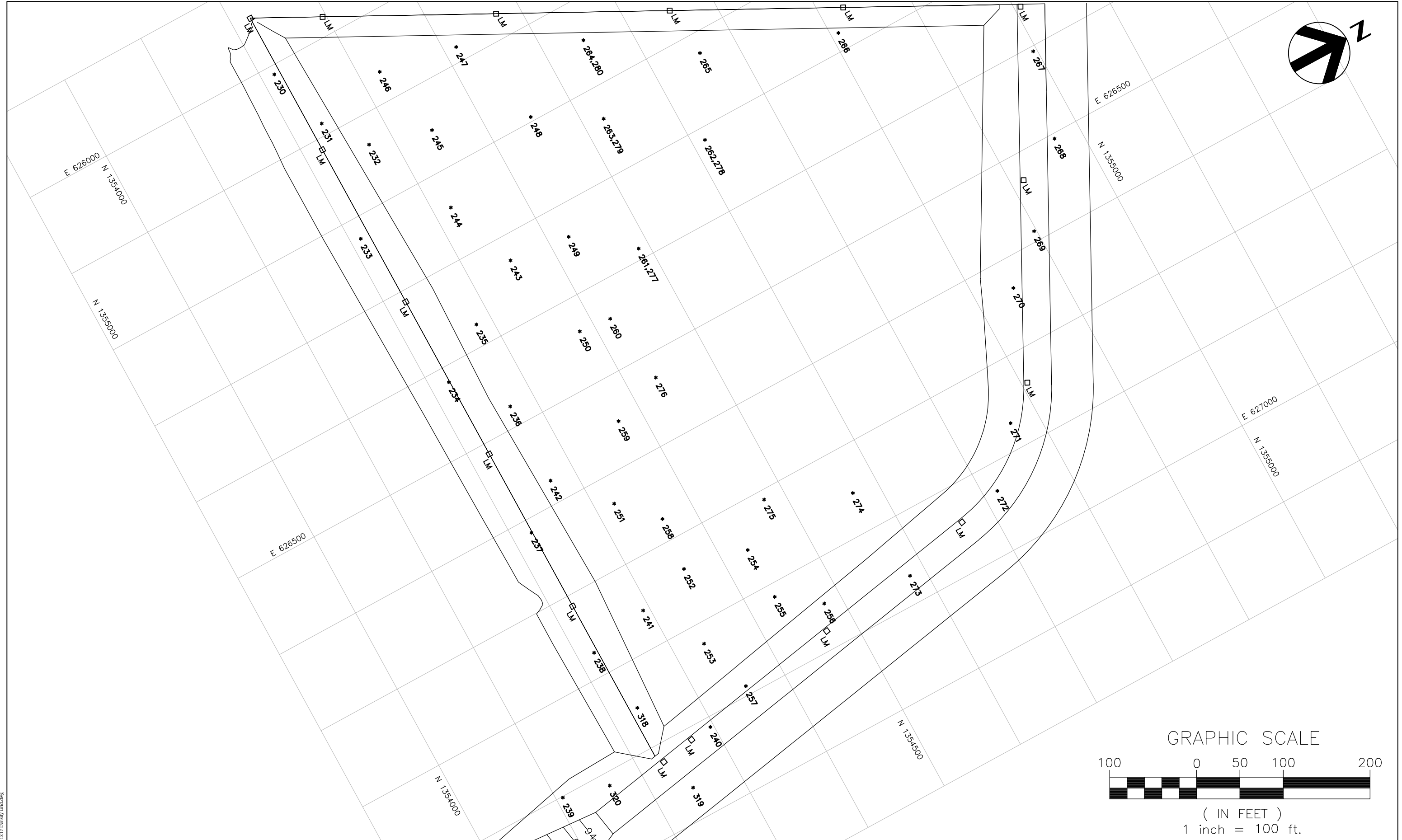
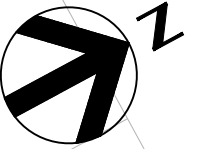


PROJECT MANAGER:	A. BRANTLEY, PE		
DESIGNED BY:	A. BRANTLEY, PE		
QC'ED BY:	S. NEJAD, PE		
DRAWN BY:	A. BRANTLEY, PE		
ISSUE	DATE	RESPONSIBLE ENG.	DESCRIPTION
0	8/31/15	BRANTLEY ENGINEERING, LLC.	INITIAL ISSUE
PROJECT NUMBER		1014-101	

**JED SOLID WASTE MANAGEMENT FACILITY  
CELL 11 CONSTRUCTION**

**MOISTURE/DENSITY  
( LIFT 5 ) TEST LOCATIONS ( LIFT 5 )  
FOR SUBGRADE**

 SCALE: 1" = 100'	FILENAME 11x17 GRID LAYOUT DIRECTORY JED/CELL 11/DWG	<b>8</b> FIGURE
----------------------	---	--------------------



0	8/31/15	BRANTLEY ENGINEERING, LLC.	INITIAL ISSUE		
ISSUE	DATE	RESPONSIBLE ENG.	DESCRIPTION		

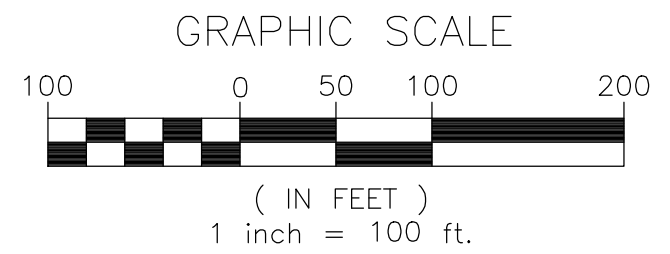
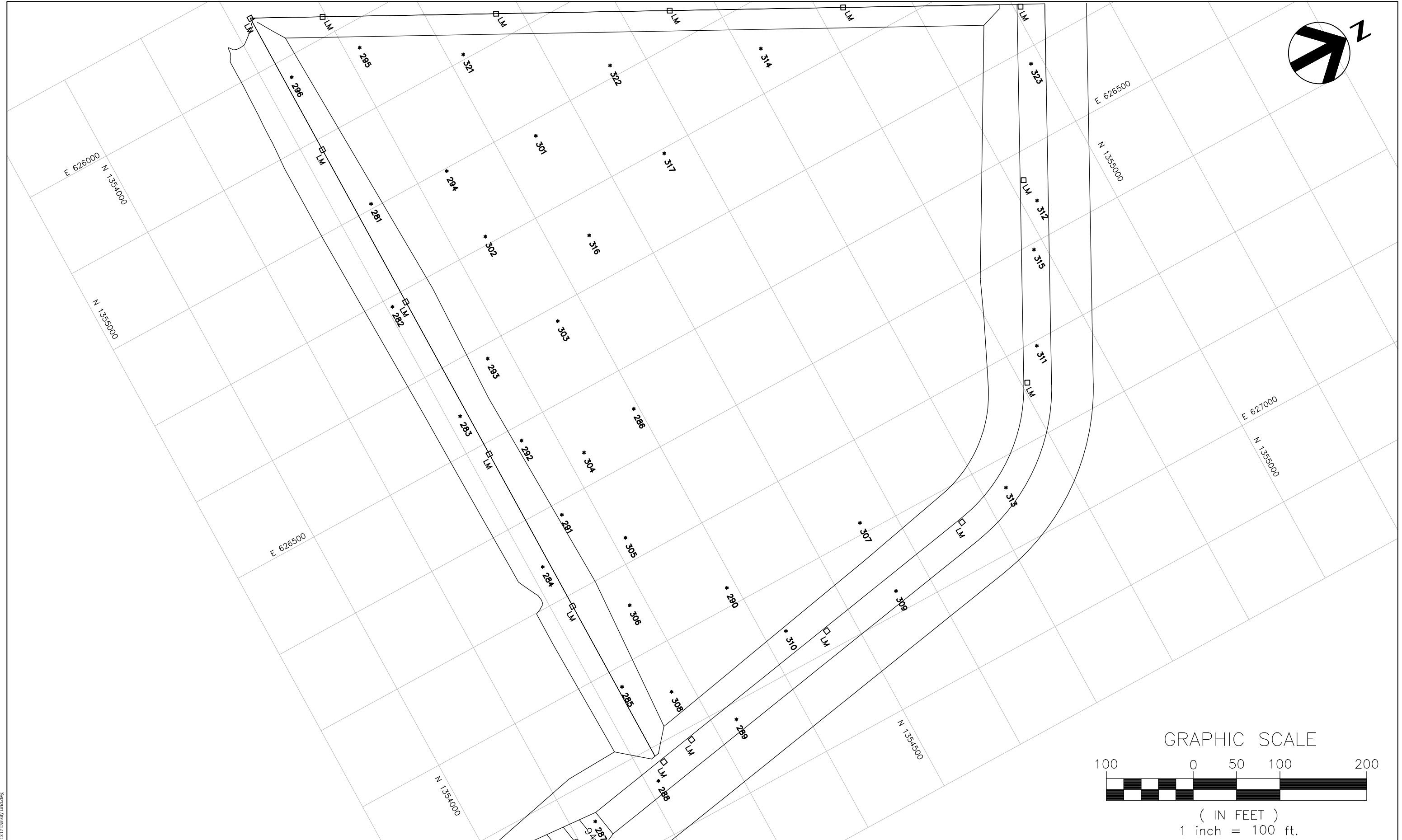
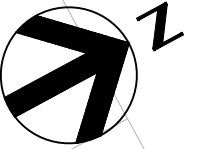
PROJECT MANAGER:	A. BRANTLEY, PE
DESIGNED BY:	A. BRANTLEY, PE
QC'ED BY:	S. NEJAD, PE
DRAWN BY:	A. BRANTLEY, PE
PROJECT NUMBER	1014-101


**JED SOLID WASTE MANAGEMENT FACILITY  
CELL 11 CONSTRUCTION**

**MOISTURE/DENSITY  
( LIFT 6 ) TEST LOCATIONS ( LIFT 6 )  
FOR SUBBASE**

	FILENAME	11X17 GRID LAYOUT	8 FIGURE
SCALE: 1" = 100'	DIRECTORY	JED/CELL 11/DWG	

11X17 Density Grid.dwg



11x17 Density Grid.dwg



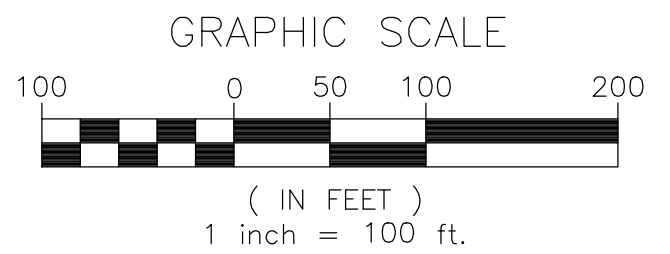
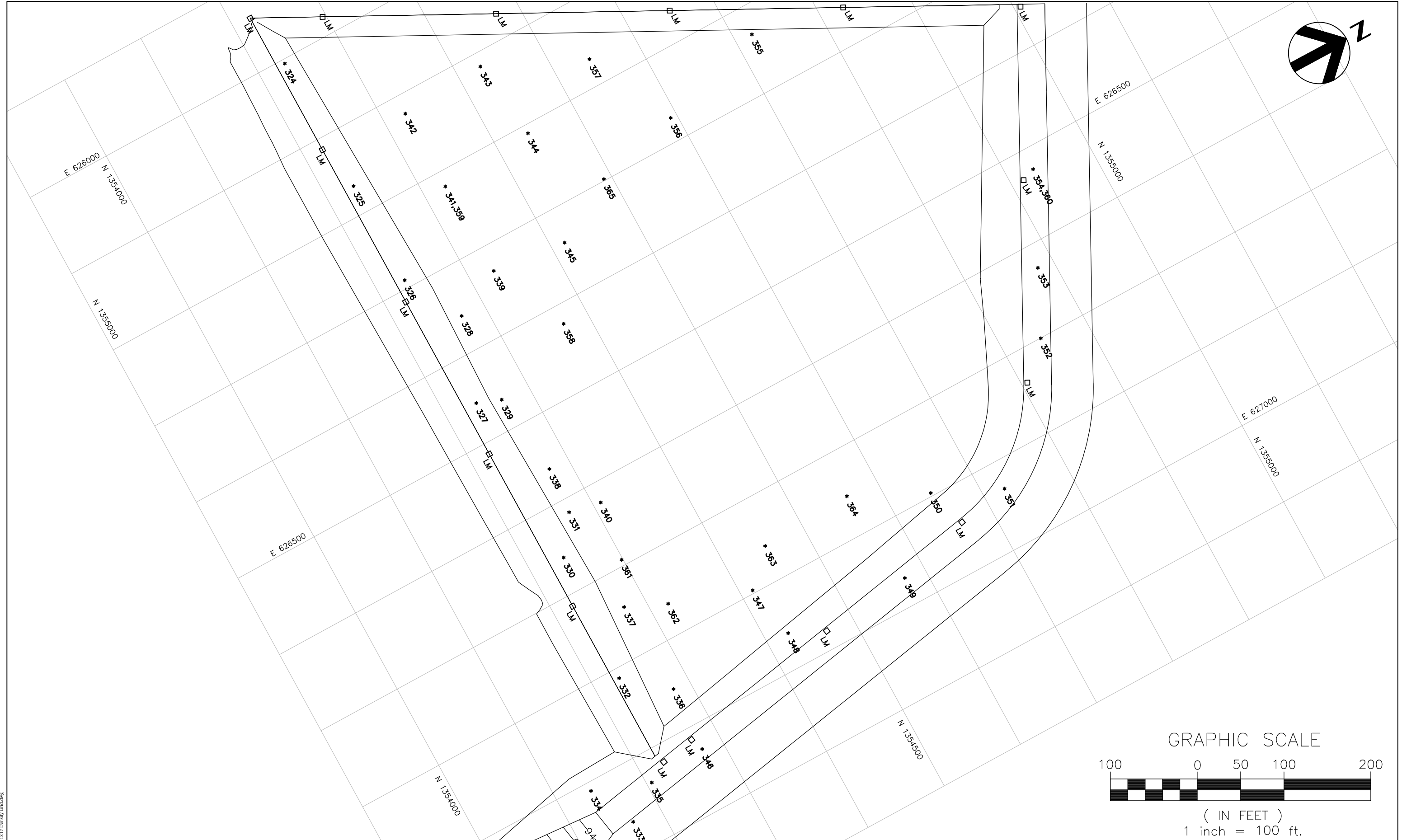
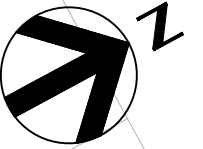
PROJECT MANAGER:	A. BRANTLEY, PE		
DESIGNED BY:	A. BRANTLEY, PE		
QC'ED BY:	S. NEJAD, PE		
DRAWN BY:	A. BRANTLEY, PE		
ISSUE	DATE	RESPONSIBLE ENG.	DESCRIPTION
0	8/31/15	BRANTLEY ENGINEERING, LLC.	INITIAL ISSUE
PROJECT NUMBER		1014-101	

**JED SOLID WASTE MANAGEMENT FACILITY  
CELL 11 CONSTRUCTION**

**MOISTURE/DENSITY  
(LIFT 7) TEST LOCATIONS (LIFT 7)  
FOR SUBBASE**

 SCALE: 1" = 100'	FILENAME 11x17 GRID LAYOUT DIRECTORY JED/CELL 11/DWG	<b>8</b> FIGURE
----------------------	---	--------------------





0	8/31/15
ISSUE	DATE

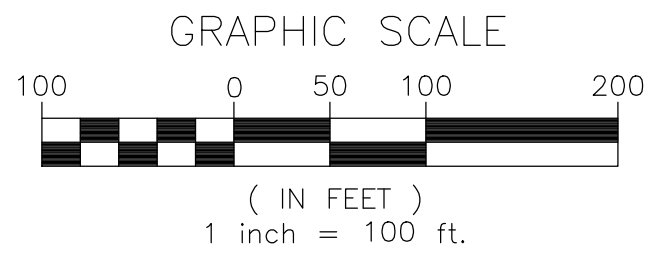
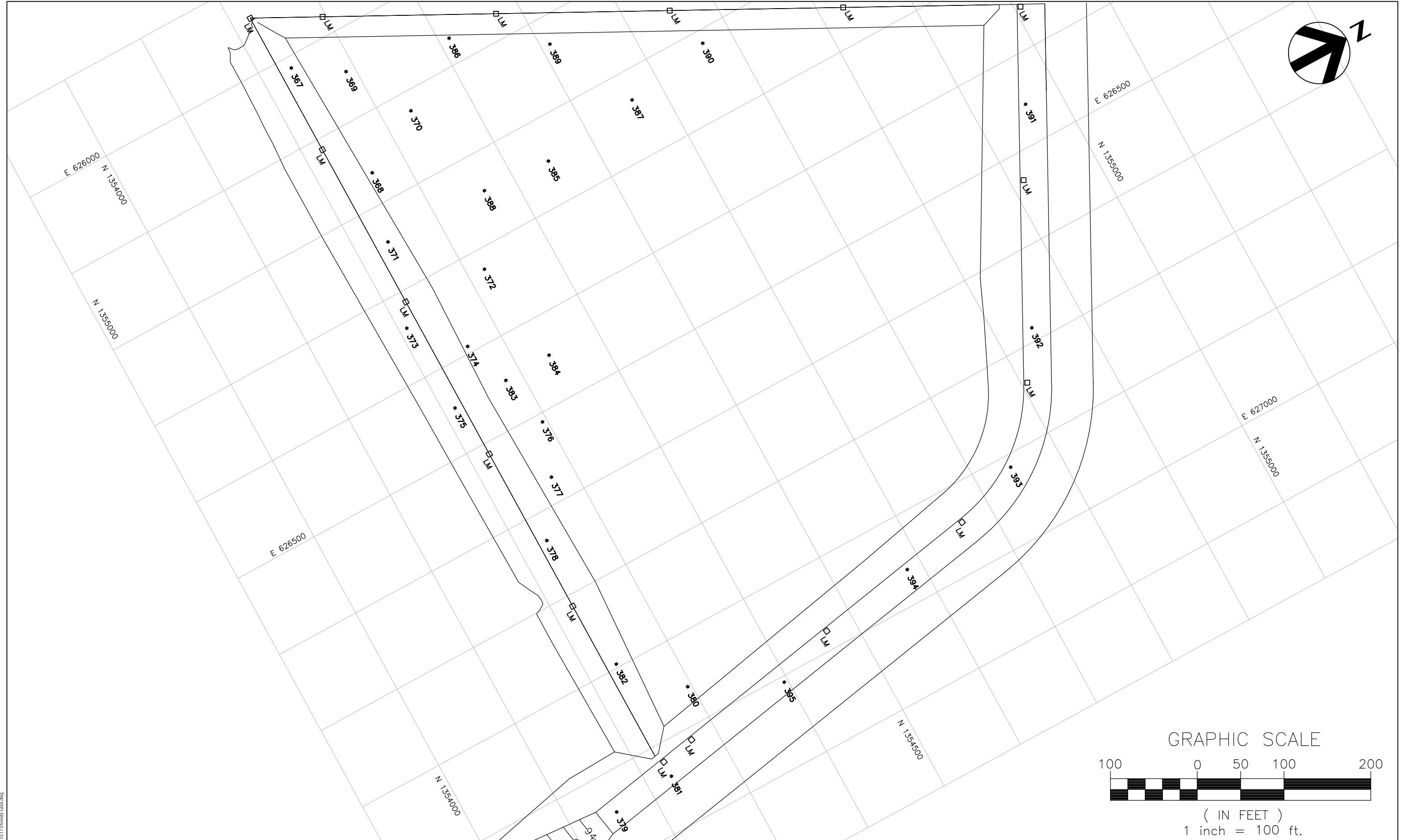
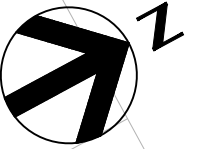
BRANTLEY ENGINEERING, LLC.	INITIAL ISSUE
RESPONSIBLE ENG.	DESCRIPTION

PROJECT MANAGER:	A. BRANTLEY, PE
DESIGNED BY:	A. BRANTLEY, PE
QC'ED BY:	S. NEJAD, PE
DRAWN BY:	A. BRANTLEY, PE
PROJECT NUMBER	1014-101

**JED SOLID WASTE MANAGEMENT FACILITY  
CELL 11 CONSTRUCTION**

<b>MOISTURE/DENSITY ( LIFT 8 ) TEST LOCATIONS ( LIFT 8 ) FOR SUBBASE</b>	
	FILENAME 11X17 GRID LAYOUT DIRECTORY JED/CELL 11/DWG
SCALE: 1" = 100'	<b>8</b> FIGURE

11x17 Density Grid.dwg



11x17.Density\_Grid.dwg

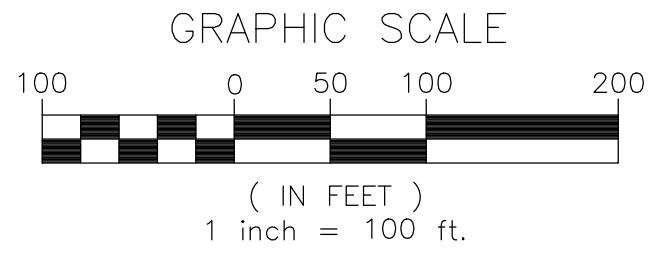
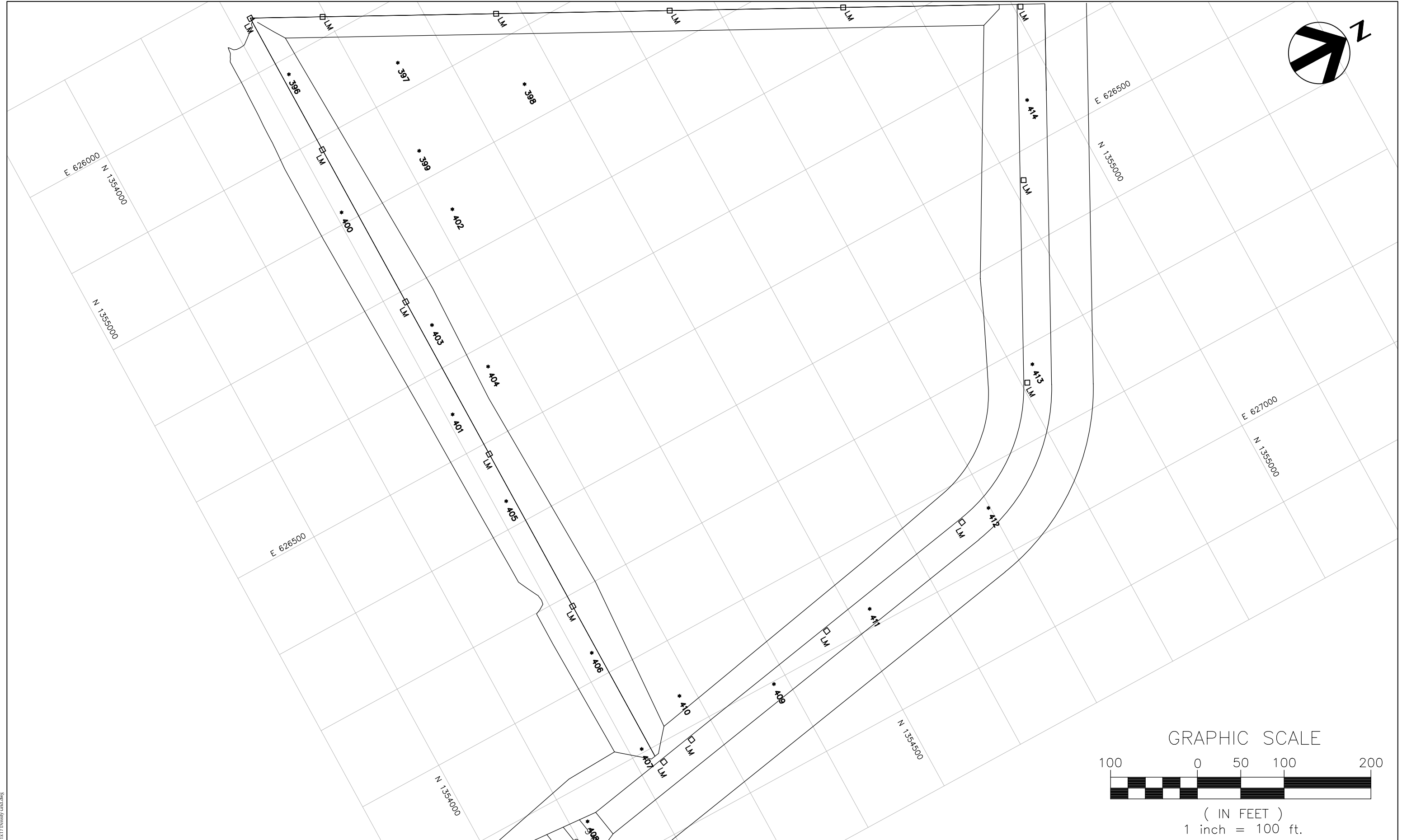
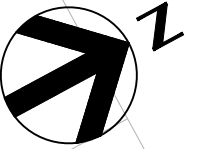


PROJECT MANAGER:	A. BRANTLEY, PE						
DESIGNED BY:	A. BRANTLEY, PE						
QC'ED BY:	S. NEJAD, PE						
DRAWN BY:	A. BRANTLEY, PE						
ISSUE	0	DATE	8/31/15	RESPONSIBLE ENG.	BRANTLEY ENGINEERING, LLC.	DESCRIPTION	INITIAL ISSUE
PROJECT NUMBER	1014-101						

**JED SOLID WASTE MANAGEMENT FACILITY  
CELL 11 CONSTRUCTION**

**MOISTURE/DENSITY  
( LIFT 9 ) TEST LOCATIONS (LIFT 9)  
FOR SUBBASE**

SCALE: 1" = 100'	FILENAME: 11X17 GRID LAYOUT	8 FIGURE
DIRECTORY: JED/CELL 11/DWG		



11x17 Density Grid.dwg

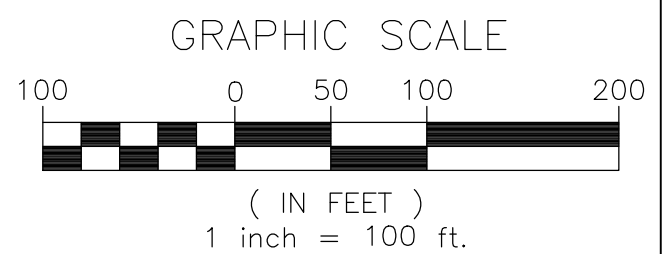
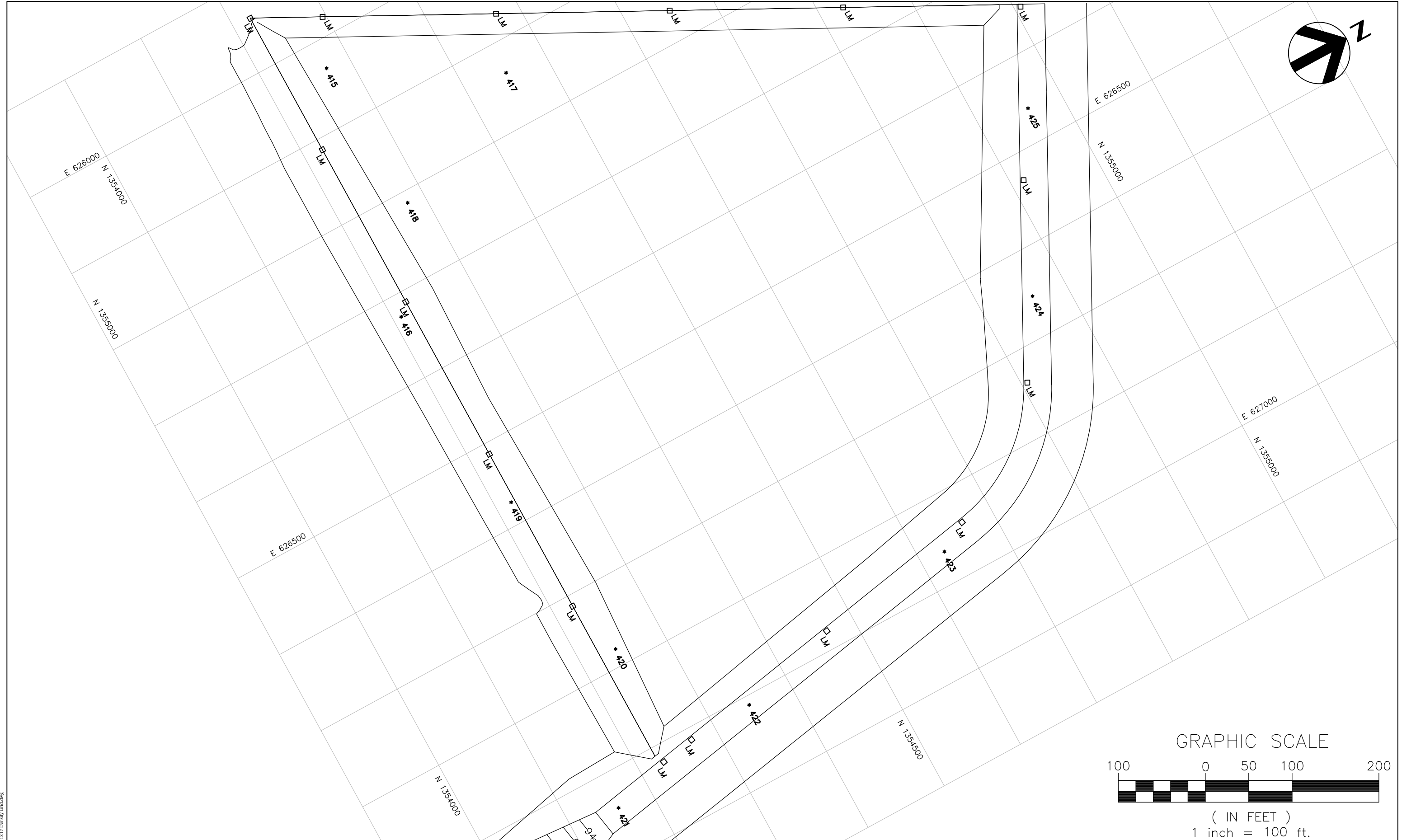
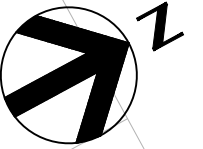


PROJECT MANAGER:	A. BRANTLEY, PE						
DESIGNED BY:	A. BRANTLEY, PE						
QC'ED BY:	S. NEJAD, PE						
DRAWN BY:	A. BRANTLEY, PE						
ISSUE	0	DATE	8/31/15	RESPONSIBLE ENG.	BRANTLEY ENGINEERING, LLC.	DESCRIPTION	INITIAL ISSUE
PROJECT NUMBER	1014-101						

**JED SOLID WASTE MANAGEMENT FACILITY  
CELL 11 CONSTRUCTION**

**MOISTURE/DENSITY  
( LIFT 10 ) TEST LOCATIONS ( LIFT 10 )  
FOR SUBBASE**

SCALE:	1" = 100'	FILENAME	11x17 GRID LAYOUT	FIGURE	8
		DIRECTORY	JED/CELL 11/DWG		



0	8/31/15
ISSUE	DATE

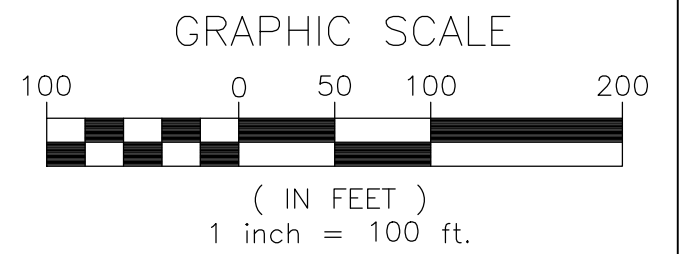
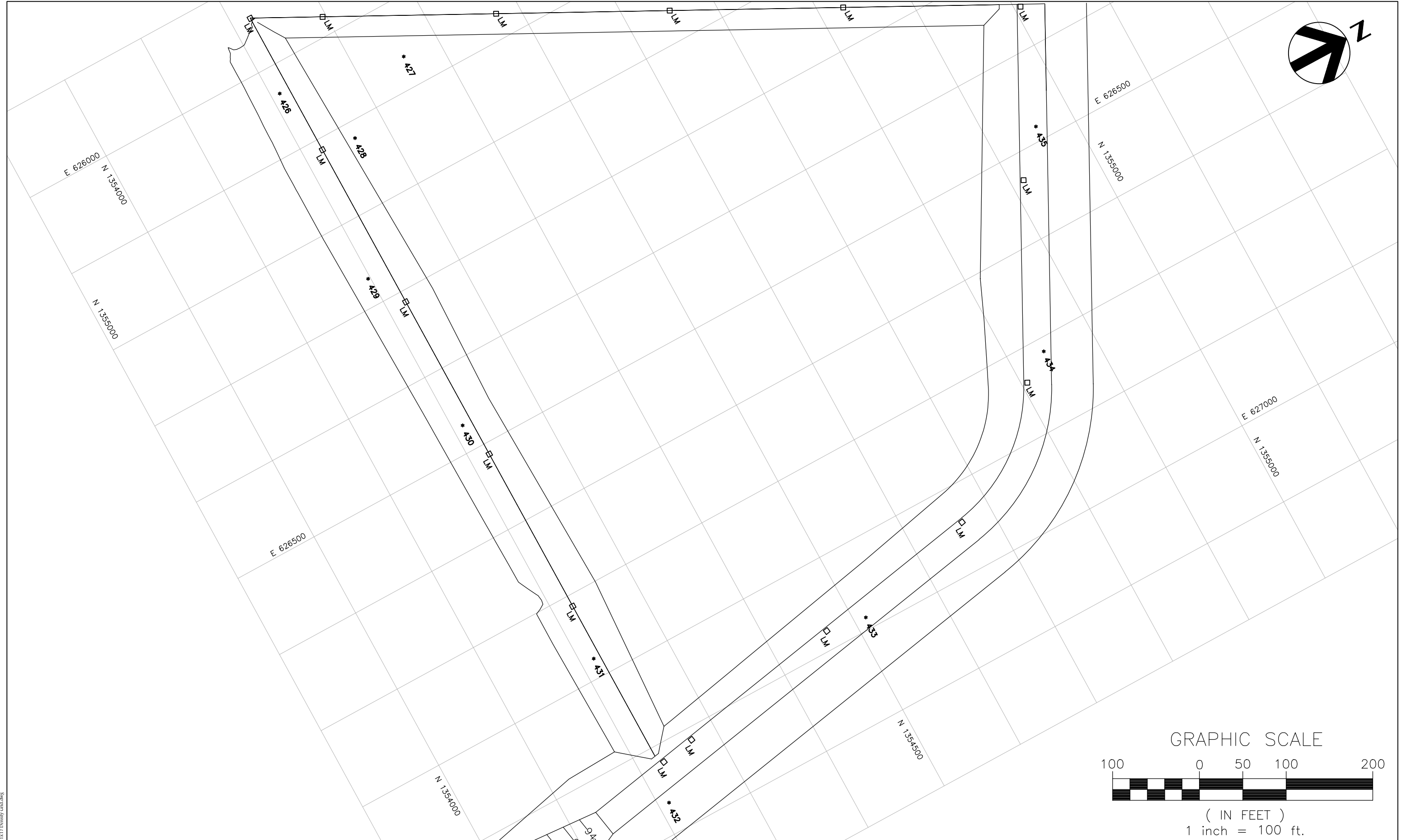
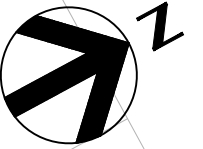
BRANTLEY ENGINEERING, LLC.	INITIAL ISSUE
RESPONSIBLE ENG.	DESCRIPTION

PROJECT MANAGER:	A. BRANTLEY, PE
DESIGNED BY:	A. BRANTLEY, PE
QC'ED BY:	S. NEJAD, PE
DRAWN BY:	A. BRANTLEY, PE
PROJECT NUMBER	1014-101

**JED SOLID WASTE MANAGEMENT FACILITY  
CELL 11 CONSTRUCTION**

<b>MOISTURE/DENSITY (LIFT 11) TEST LOCATIONS (LIFT 11) FOR SUBBASE</b>					
	<table border="1"> <tr> <td>FILENAME</td> <td>11X17 GRID LAYOUT</td> </tr> <tr> <td>DIRECTORY</td> <td>JED/CELL 11/DWG</td> </tr> </table>	FILENAME	11X17 GRID LAYOUT	DIRECTORY	JED/CELL 11/DWG
FILENAME	11X17 GRID LAYOUT				
DIRECTORY	JED/CELL 11/DWG				
SCALE: 1" = 100'	<b>8</b> FIGURE				

11x17 Density Grid.dwg



0	8/31/15
ISSUE	DATE

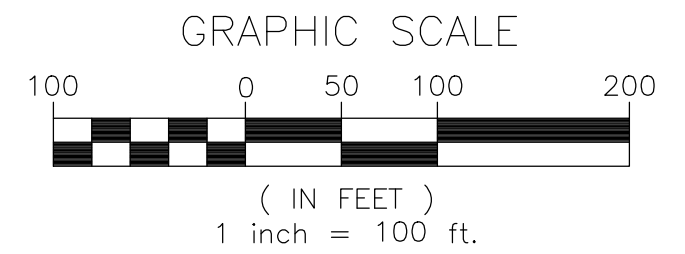
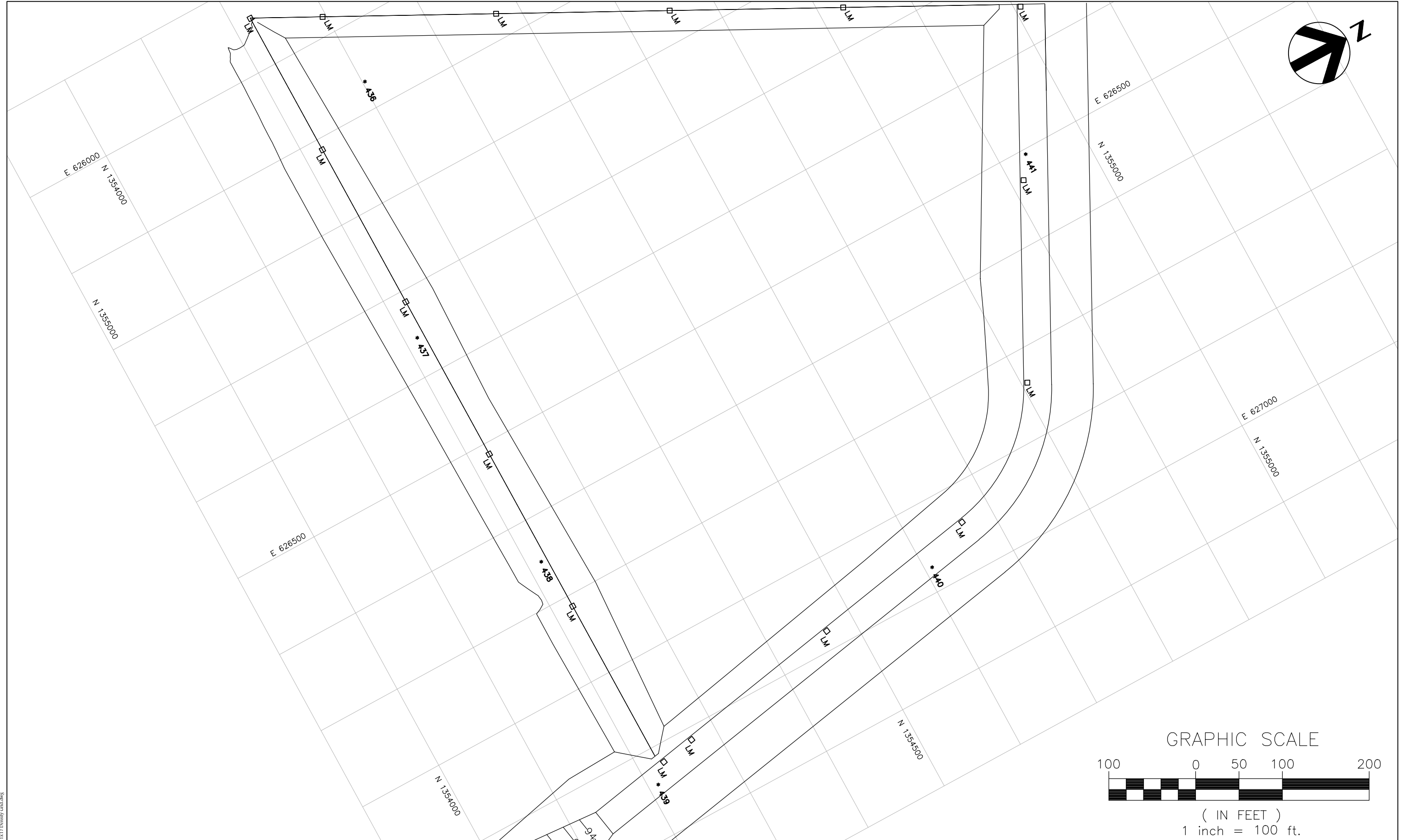
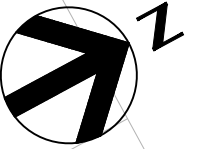
BRANTLEY ENGINEERING, LLC.	INITIAL ISSUE
RESPONSIBLE ENG.	DESCRIPTION

PROJECT MANAGER:	A. BRANTLEY, PE
DESIGNED BY:	A. BRANTLEY, PE
QC'ED BY:	S. NEJAD, PE
DRAWN BY:	A. BRANTLEY, PE
PROJECT NUMBER	1014-101

**JED SOLID WASTE MANAGEMENT FACILITY  
CELL 11 CONSTRUCTION**

<b>MOISTURE/DENSITY (LIFT 12) TEST LOCATIONS (LIFT 12) FOR SUBBASE</b>	
	FILENAME 11X17 GRID LAYOUT DIRECTORY JED/CELL 11/DWG
SCALE: 1" = 100'	<b>8</b> FIGURE

11x17 Density Grid.dwg



11x17 Density Grid.dwg

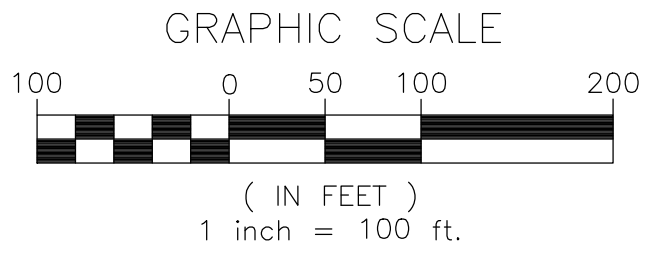
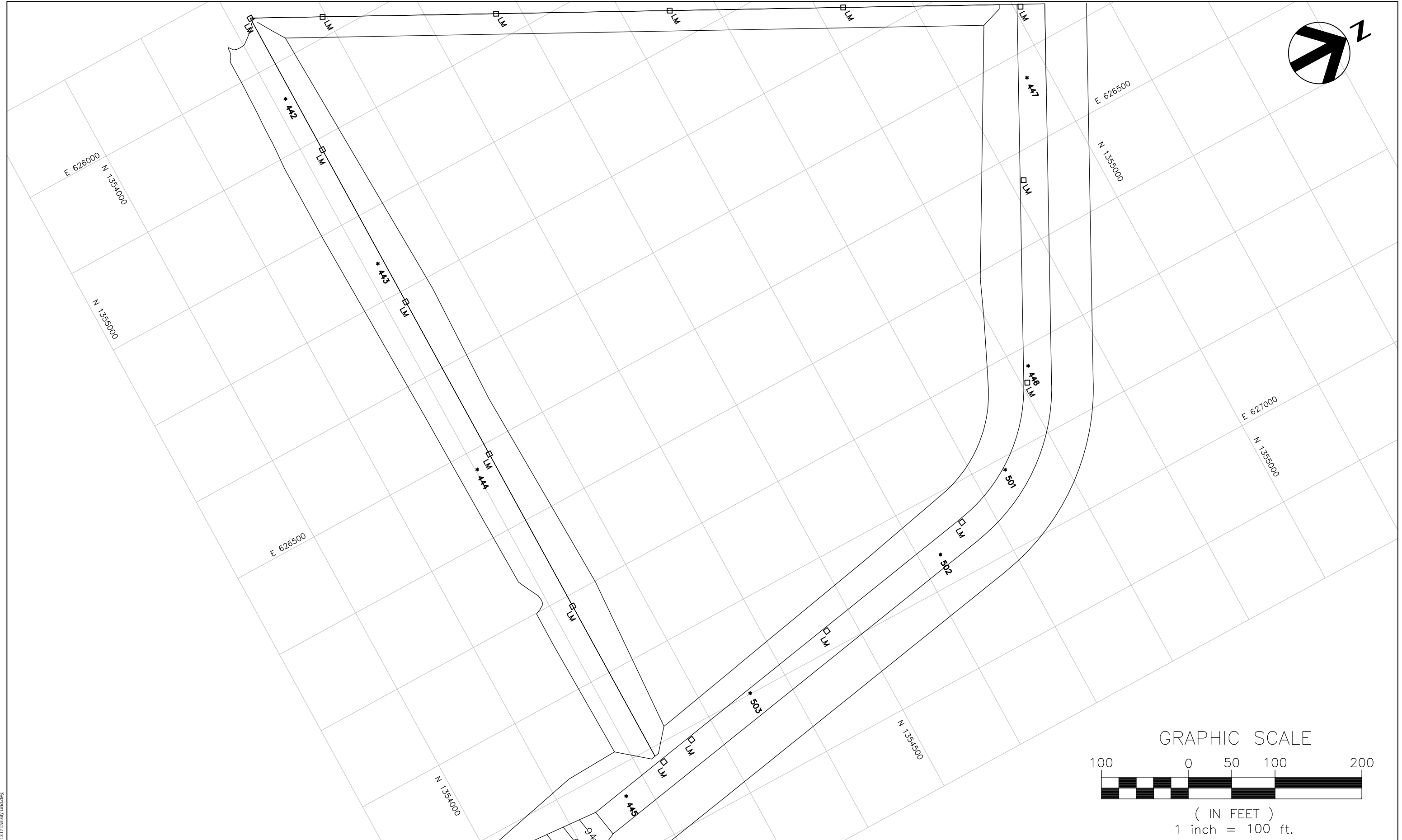
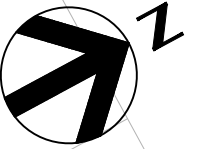


PROJECT MANAGER:	A. BRANTLEY, PE		
DESIGNED BY:	A. BRANTLEY, PE		
QC'ED BY:	S. NEJAD, PE		
DRAWN BY:	A. BRANTLEY, PE		
ISSUE	DATE	RESPONSIBLE ENG.	DESCRIPTION
0	8/31/15	BRANTLEY ENGINEERING, LLC.	INITIAL ISSUE
PROJECT NUMBER		1014-101	

**JED SOLID WASTE MANAGEMENT FACILITY  
CELL 11 CONSTRUCTION**

**MOISTURE/DENSITY  
( LIFT 13 ) TEST LOCATIONS (LIFT 13)  
FOR SUBBASE**

 SCALE: 1" = 100'	FILENAME: 11X17 GRID LAYOUT DIRECTORY: JED/CELL 11/DWG	<b>8</b> FIGURE
----------------------	---	--------------------



11x17 Density Grid.dwg

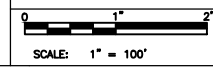


ISSUE	DATE	RESPONSIBLE ENG.	DESCRIPTION
0	8/31/15	BRANTLEY ENGINEERING, LLC.	INITIAL ISSUE

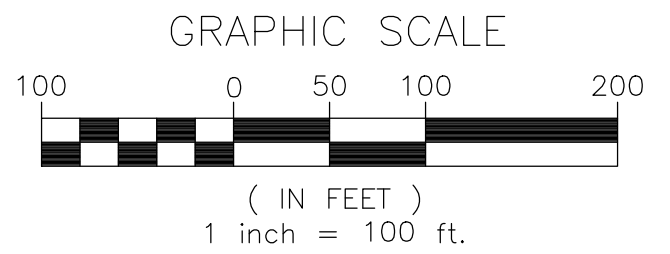
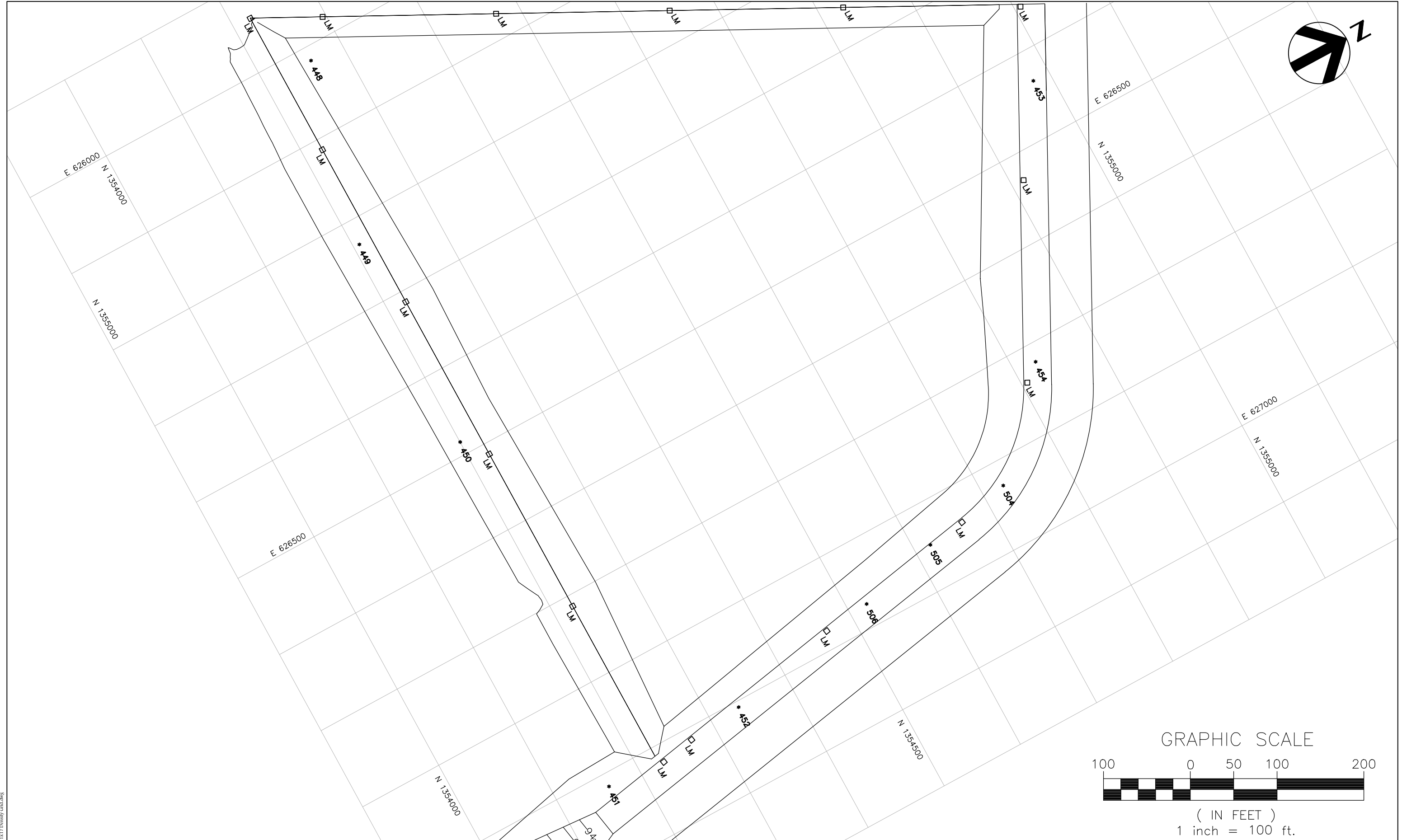
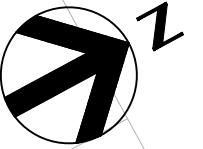
PROJECT MANAGER:	A. BRANTLEY, PE
DESIGNED BY:	A. BRANTLEY, PE
QC'ED BY:	S. NEJAD, PE
DRAWN BY:	A. BRANTLEY, PE
PROJECT NUMBER	1014-101

**JED SOLID WASTE MANAGEMENT FACILITY  
CELL 11 CONSTRUCTION**

**MOISTURE/DENSITY  
(LIFT 14) TEST LOCATIONS (LIFT 14)  
FOR SUBBASE**



FILENAME	11X17 GRID LAYOUT
DIRECTORY	JED/CELL 11/DWG



ISSUE	DATE	RESPONSIBLE ENG.	DESCRIPTION
0	8/31/15	BRANTLEY ENGINEERING, LLC.	INITIAL ISSUE

PROJECT MANAGER:	A. BRANTLEY, PE
DESIGNED BY:	A. BRANTLEY, PE
QC'ED BY:	S. NEJAD, PE
DRAWN BY:	A. BRANTLEY, PE
PROJECT NUMBER	1014-101

**JED SOLID WASTE MANAGEMENT FACILITY  
CELL 11 CONSTRUCTION**

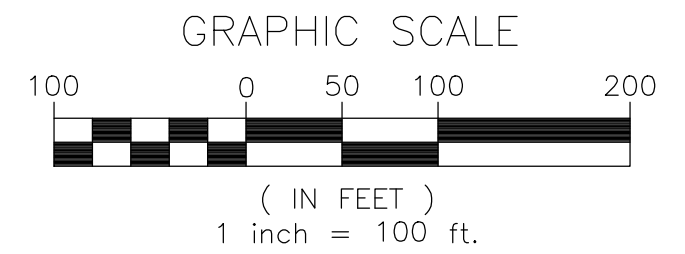
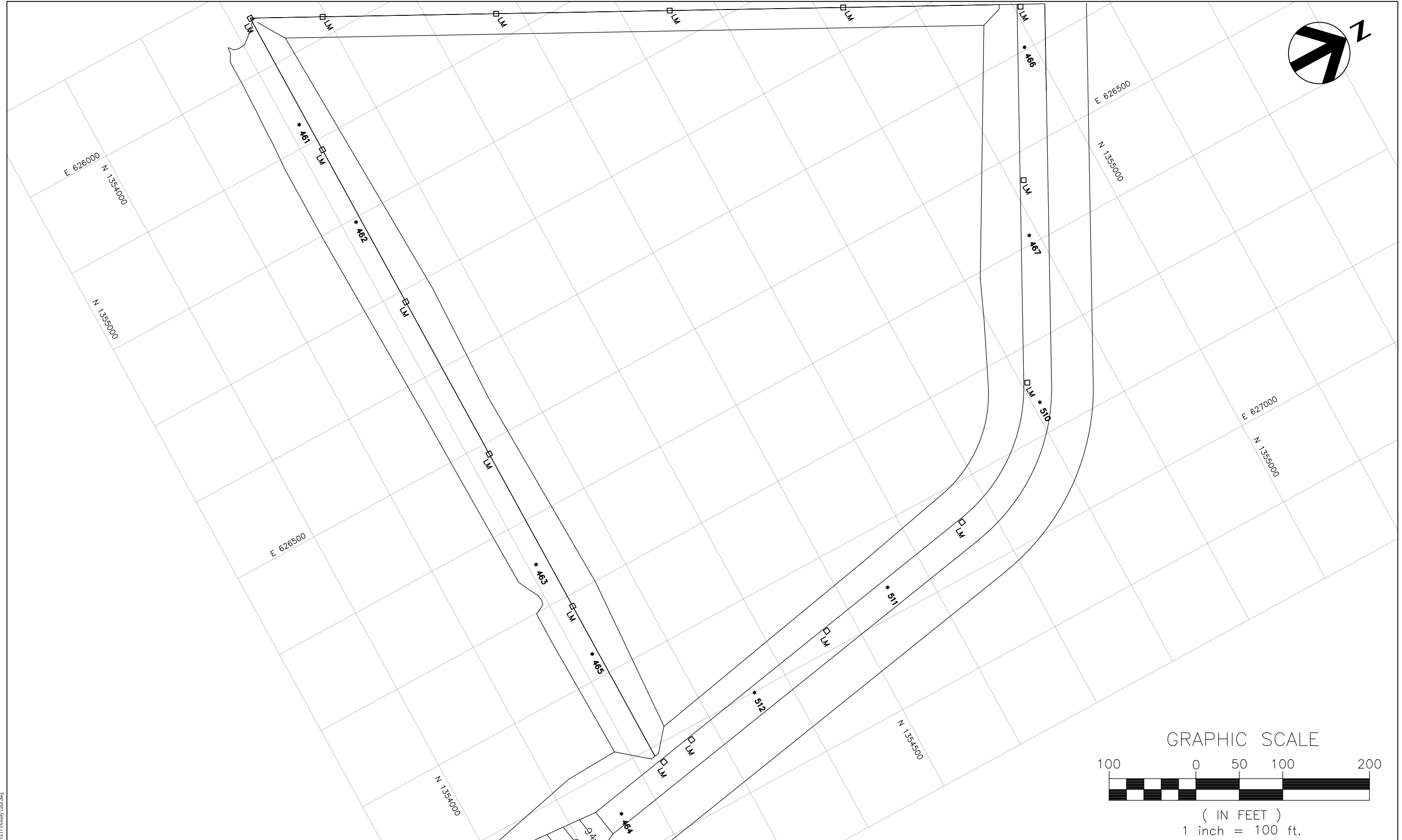
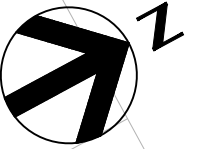
**MOISTURE/DENSITY  
( LIFT 15 ) TEST LOCATIONS (LIFT 15)  
FOR SUBBASE**

SCALE: 1" = 100'	FILENAME: 11X17 GRID LAYOUT	8 FIGURE
	DIRECTORY: JED/CELL 11/DWG	

11x17 Density Grid.dwg







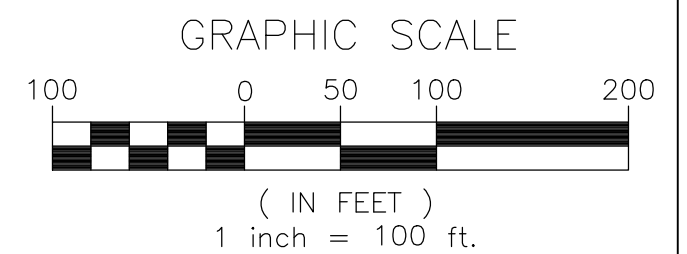
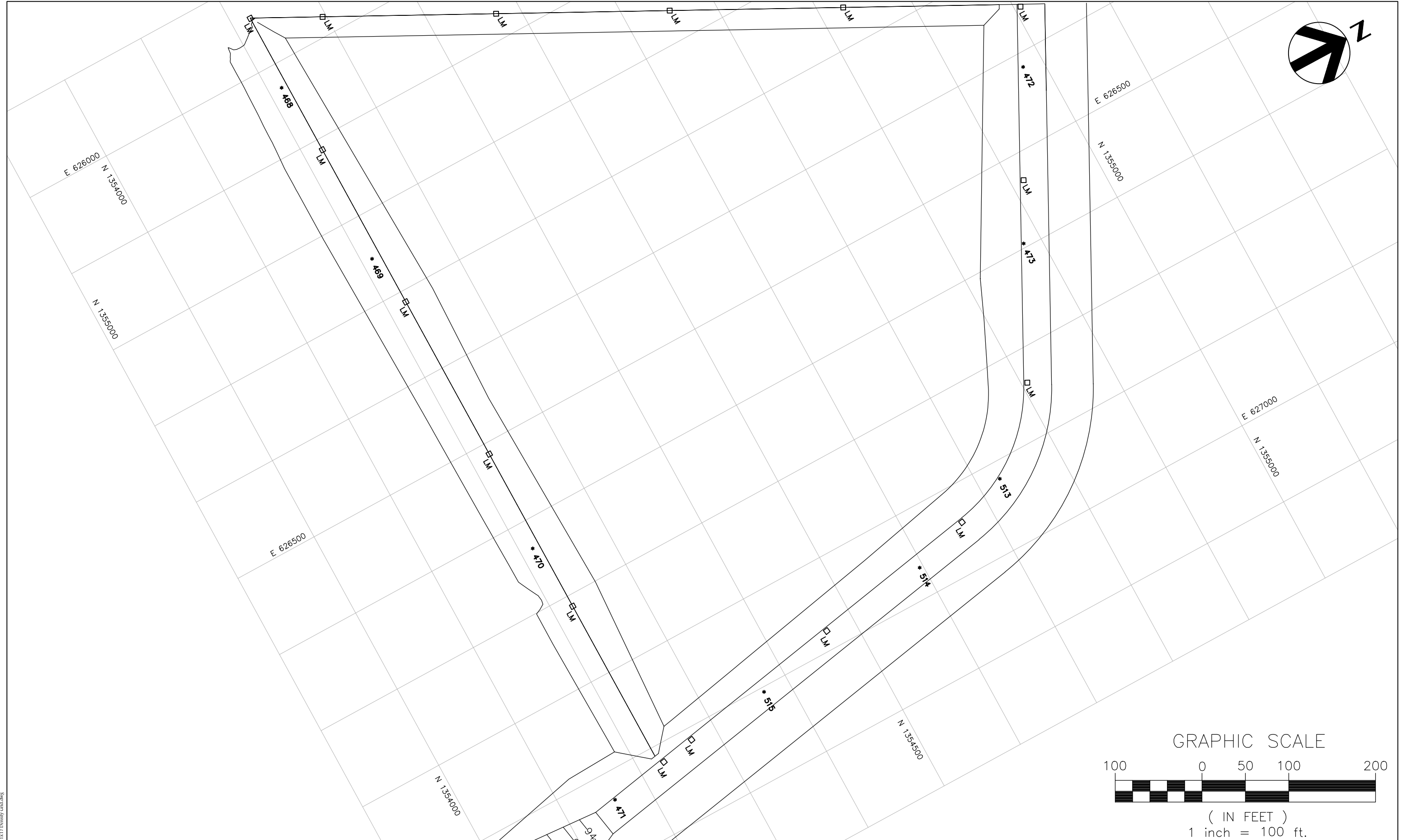
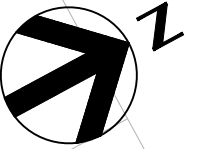
PROJECT MANAGER:	A. BRANTLEY, PE		
DESIGNED BY:	A. BRANTLEY, PE		
QC'ED BY:	S. NEJAD, PE		
DRAWN BY:	A. BRANTLEY, PE		
ISSUE	DATE	RESPONSIBLE ENG.	DESCRIPTION
0	8/31/15	BRANTLEY ENGINEERING, LLC.	INITIAL ISSUE
PROJECT NUMBER		1014-101	

**JED SOLID WASTE MANAGEMENT FACILITY  
CELL 11 CONSTRUCTION**

**MOISTURE/DENSITY  
( LIFT 17 ) TEST LOCATIONS (LIFT 17)  
FOR SUBBASE**

 SCALE: 1" = 100'	FILENAME: 11X17 GRID LAYOUT DIRECTORY: JED/CELL 11/DWG	<b>8</b> FIGURE
----------------------	---	--------------------

11x17 Density Grid.dwg



0	8/31/15
ISSUE	DATE

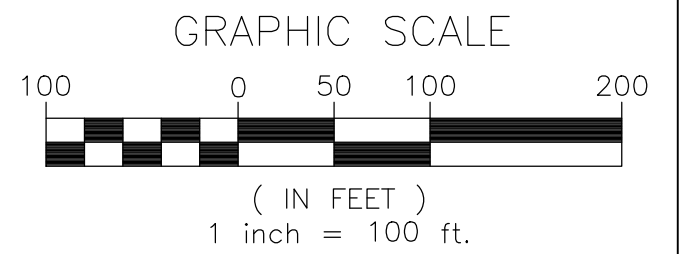
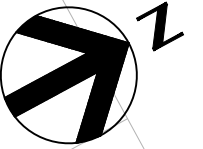
BRANTLEY ENGINEERING, LLC.	INITIAL ISSUE
RESPONSIBLE ENG.	DESCRIPTION

PROJECT MANAGER:	A. BRANTLEY, PE
DESIGNED BY:	A. BRANTLEY, PE
QC'ED BY:	S. NEJAD, PE
DRAWN BY:	A. BRANTLEY, PE
PROJECT NUMBER	1014-101

**JED SOLID WASTE MANAGEMENT FACILITY  
CELL 11 CONSTRUCTION**

<b>MOISTURE/DENSITY ( LIFT 18 ) TEST LOCATIONS ( LIFT 18 ) FOR SUBBASE</b>	
	FILENAME 11X17 GRID LAYOUT DIRECTORY JED/CELL 11/DWG
SCALE: 1" = 100'	<b>8</b> FIGURE

11x17 Density Grid.dwg



--	--

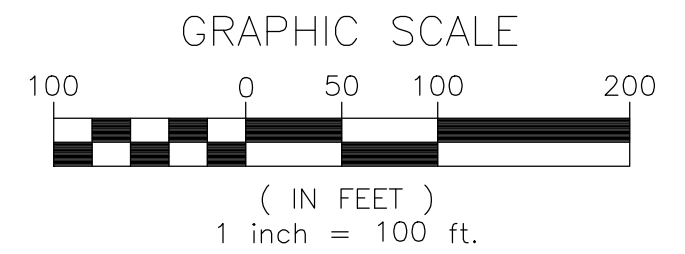
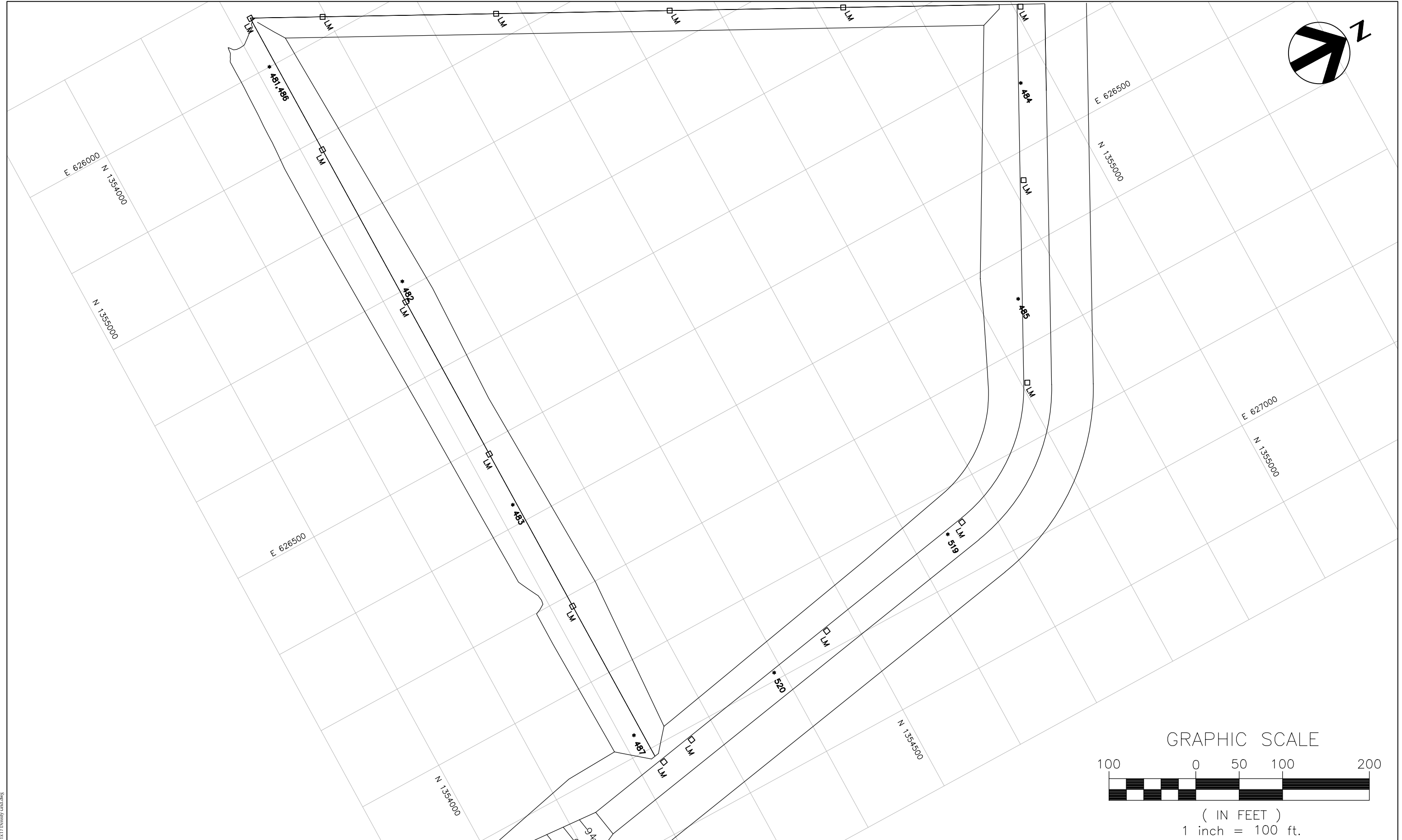
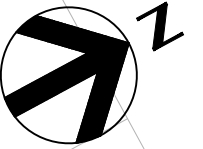
ISSUE	DATE	RESPONSIBLE ENG.	DESCRIPTION
0	8/31/15	BRANTLEY ENGINEERING, LLC.	INITIAL ISSUE

PROJECT MANAGER:	A. BRANTLEY, PE
DESIGNED BY:	A. BRANTLEY, PE
QC'ED BY:	S. NEJAD, PE
DRAWN BY:	A. BRANTLEY, PE
PROJECT NUMBER	1014-101

**JED SOLID WASTE MANAGEMENT FACILITY  
CELL 11 CONSTRUCTION**

<b>MOISTURE/DENSITY (LIFT 19) TEST LOCATIONS (LIFT 19) FOR SUBBASE</b>					
	<table border="1"> <tr> <td>FILENAME</td> <td>11X17 GRID LAYOUT</td> </tr> <tr> <td>DIRECTORY</td> <td>JED/CELL 11/DWG</td> </tr> </table>	FILENAME	11X17 GRID LAYOUT	DIRECTORY	JED/CELL 11/DWG
FILENAME	11X17 GRID LAYOUT				
DIRECTORY	JED/CELL 11/DWG				
SCALE: 1" = 100'	<b>8</b> FIGURE				

11x17 Density Grid.dwg



11x17 Density Grid.dwg

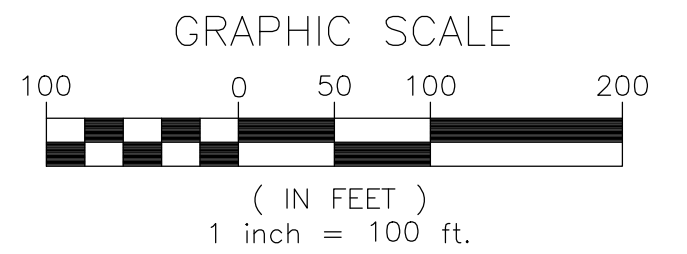
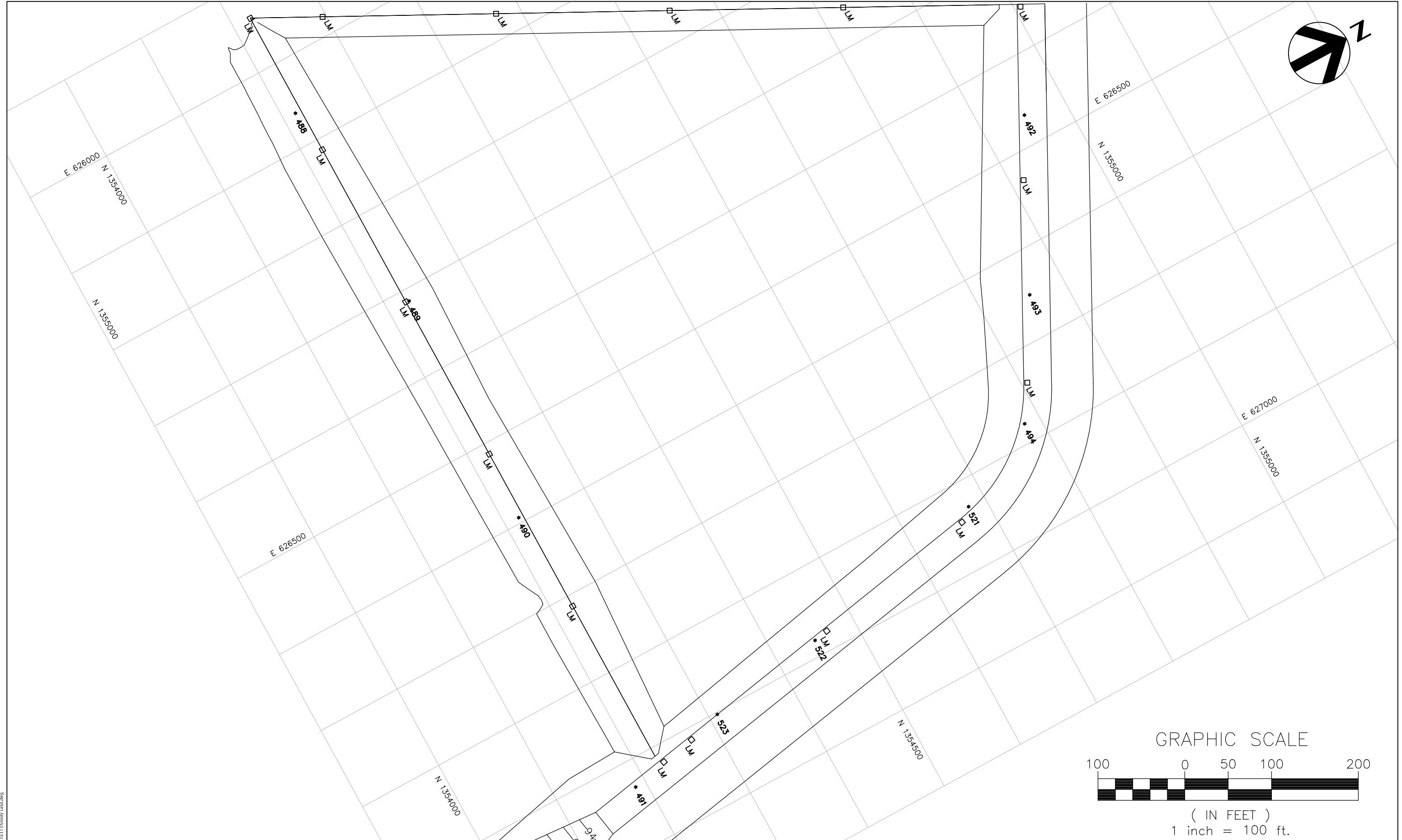
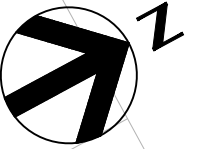


PROJECT MANAGER:	A. BRANTLEY, PE						
DESIGNED BY:	A. BRANTLEY, PE						
QC'ED BY:	S. NEJAD, PE						
DRAWN BY:	A. BRANTLEY, PE						
ISSUE	0	DATE	8/31/15	RESPONSIBLE ENG.	BRANTLEY ENGINEERING, LLC.	DESCRIPTION	INITIAL ISSUE
PROJECT NUMBER	1014-101						

**JED SOLID WASTE MANAGEMENT FACILITY  
CELL 11 CONSTRUCTION**

**MOISTURE/DENSITY  
( LIFT 20 ) TEST LOCATIONS (LIFT 20)  
FOR SUBBASE**

SCALE: 1" = 100'	FILENAME: 11x17 GRID LAYOUT	8
	DIRECTORY: JED/CELL 11/DWG	FIGURE



0	8/31/15
ISSUE	DATE

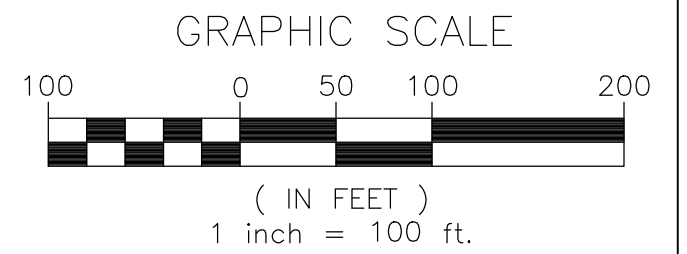
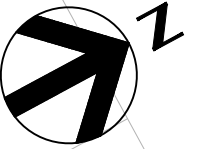
BRANTLEY ENGINEERING, LLC.	INITIAL ISSUE
RESPONSIBLE ENG.	DESCRIPTION

PROJECT MANAGER:	A. BRANTLEY, PE
DESIGNED BY:	A. BRANTLEY, PE
QC'ED BY:	S. NEJAD, PE
DRAWN BY:	A. BRANTLEY, PE
PROJECT NUMBER	1014-101

**JED SOLID WASTE MANAGEMENT FACILITY  
CELL 11 CONSTRUCTION**

<b>MOISTURE/DENSITY (LIFT 21) TEST LOCATIONS (LIFT 21) FOR SUBBASE</b>	
	FILENAME 11X17 GRID LAYOUT DIRECTORY JED/CELL 11/DWG
SCALE: 1" = 100'	<b>8</b> FIGURE

11x17 Density Grid.dwg



0	8/31/15
ISSUE	DATE

BRANTLEY ENGINEERING, LLC.	INITIAL ISSUE
RESPONSIBLE ENG.	DESCRIPTION

PROJECT MANAGER:	A. BRANTLEY, PE
DESIGNED BY:	A. BRANTLEY, PE
QC'ED BY:	S. NEJAD, PE
DRAWN BY:	A. BRANTLEY, PE
PROJECT NUMBER	1014-101

**JED SOLID WASTE MANAGEMENT FACILITY  
CELL 11 CONSTRUCTION**

<b>MOISTURE/DENSITY ( LIFT 22 ) TEST LOCATIONS ( LIFT 22 ) FOR SUBBASE</b>	
	FILENAME 11X17 GRID LAYOUT DIRECTORY JED/CELL 11/DWG
SCALE: 1" = 100'	<b>8</b> FIGURE

11x17 Density Grid.dwg