

# CITRUS COUNTY SOLID WASTE MANAGEMENT DIVISION CENTRAL LANDFILL INTERIM GAS COLLECTION AND CONTROL SYSTEM DESIGN DRAWINGS

CITRUS COUNTY, FLORIDA  
DECEMBER 2008

## **BOARD OF COUNTY COMMISSIONERS**

Dennis Damato, Commissioner, District 1  
Gary Bartell, Commissioner, District 2  
Joe Meek, Commissioner, District 3  
John Thrumston, Commissioner, District 4  
Winn Webb, Commissioner, District 5

## **COUNTY ADMINISTRATOR**

Anthony J. Schembri

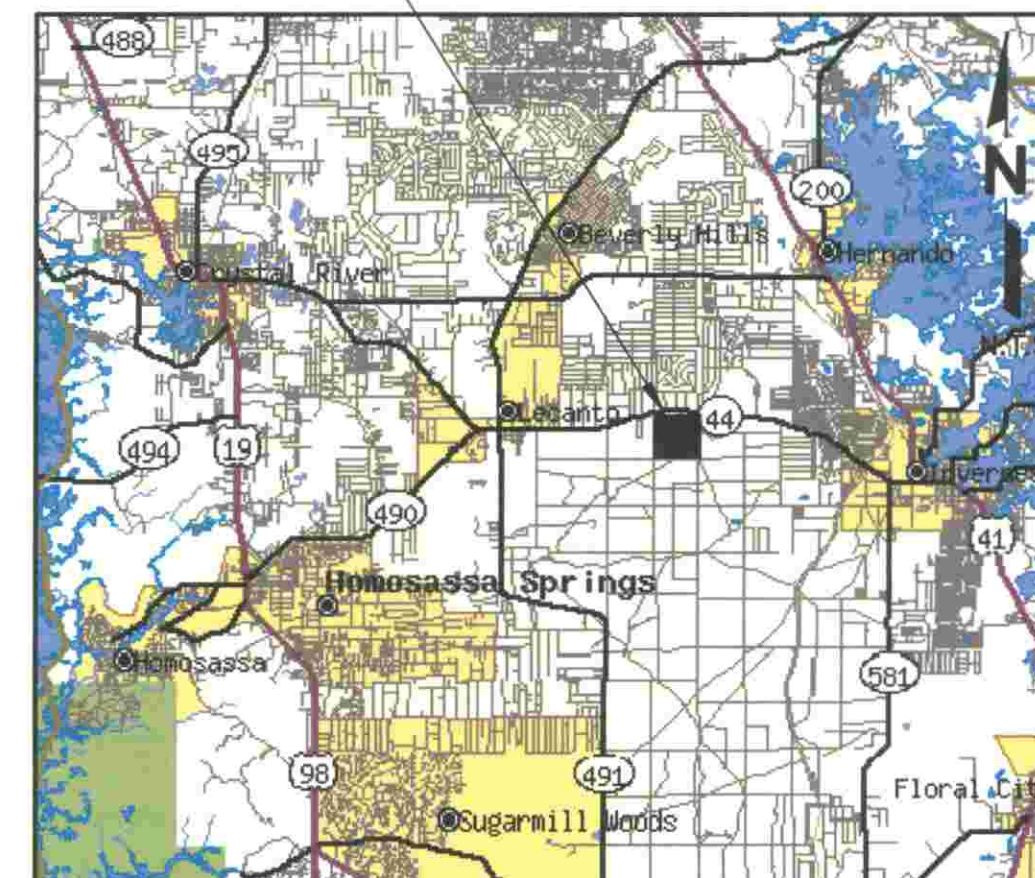
## **PUBLIC WORKS DEPARTMENT**

Glenn W. McCracken, Director

## **SOLID WASTE MANAGEMENT DIRECTOR**

Susan J. Metcalfe, P.G.

**PROJECT  
LOCATION**



**LOCATION MAP**

## **DRAWING INDEX**

DRAWING NO.	DRAWING TITLE
1	- COVER SHEET
2	- PROPOSED SITE PLAN
3	- DETAILS - 1
4	- DETAILS - 2
5	- DETAILS - 3
6	- BLOWER STATION LAYOUT

## **SCS ENGINEERS**

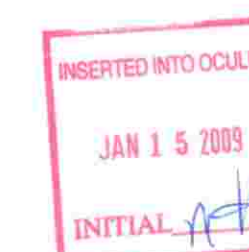
STEARNS, CONRAD AND SCHMIDT  
CONSULTING ENGINEERS

4041 PARK OAKS BLVD., SUITE 100  
TAMPA, FLORIDA 33610  
PH (813) 621-0080 FAX NO. (813) 623-6757  
WWW.SCSENGINEERS.COM

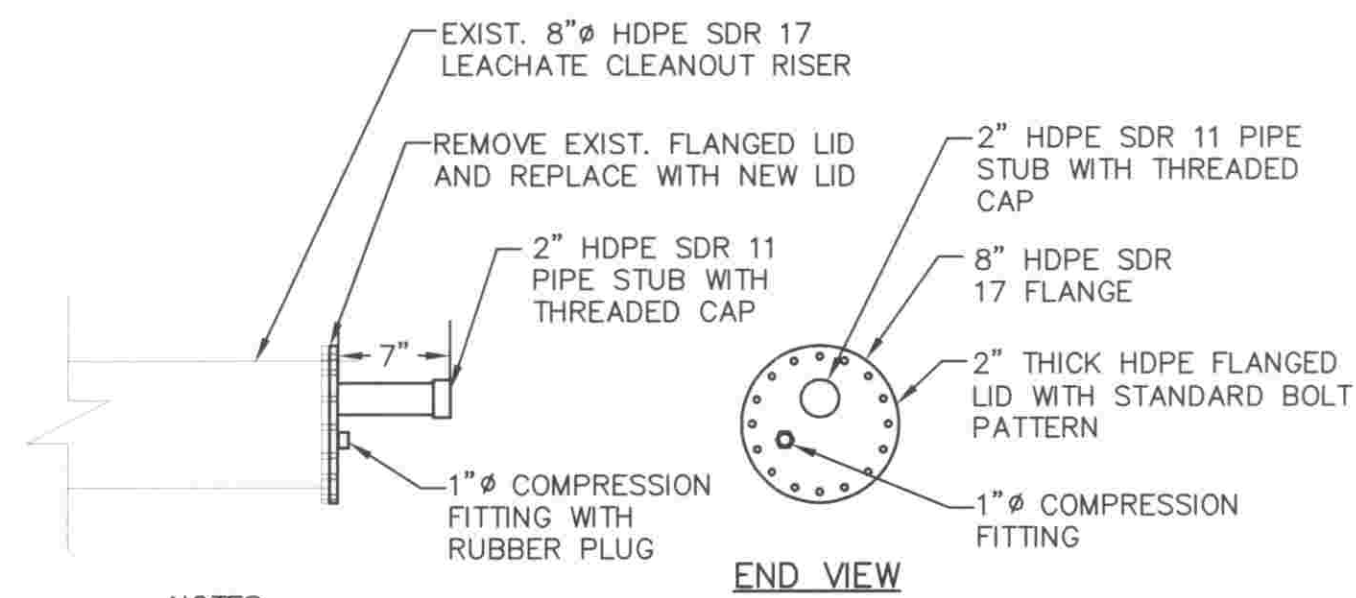
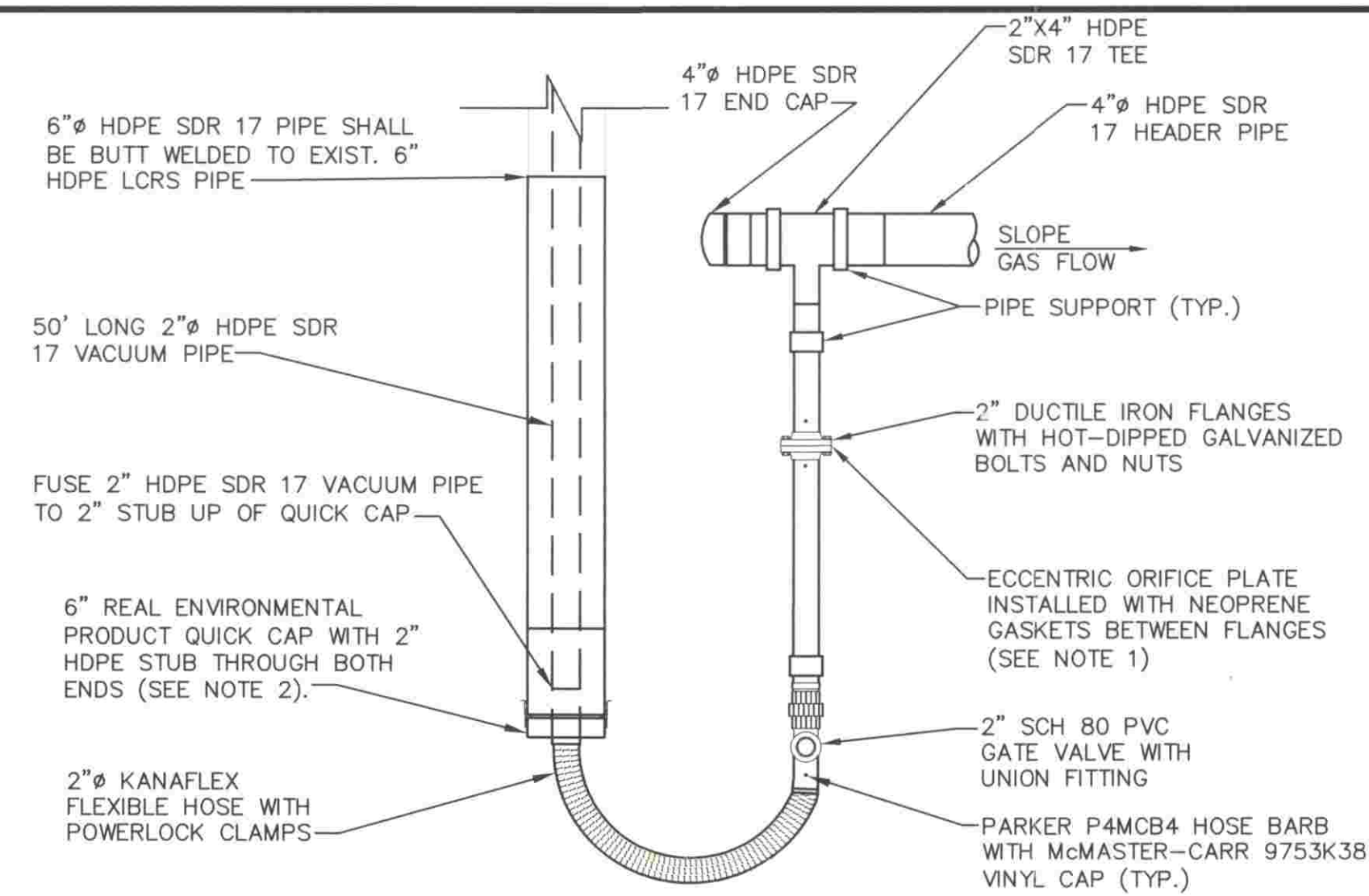
FLORIDA CERTIFICATE OF AUTHORIZATION NO. 00004892

SCS PROJECT NO. 09207049.03

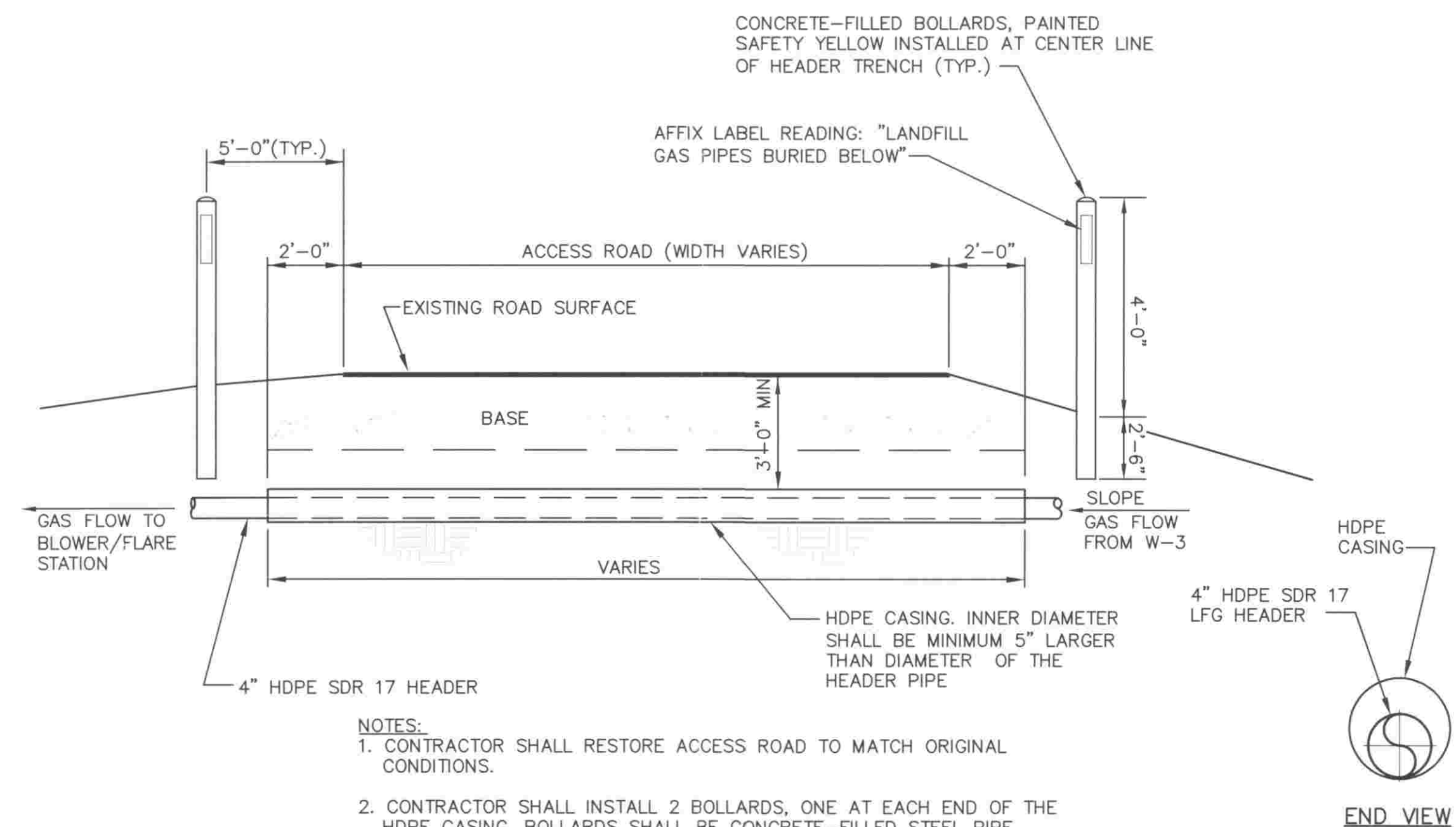
FLORIDA DEPARTMENT OF  
ENVIRONMENTAL PROTECTION  
DEC - 9 2008  
SOUTHWEST DISTRICT  
TAMPA



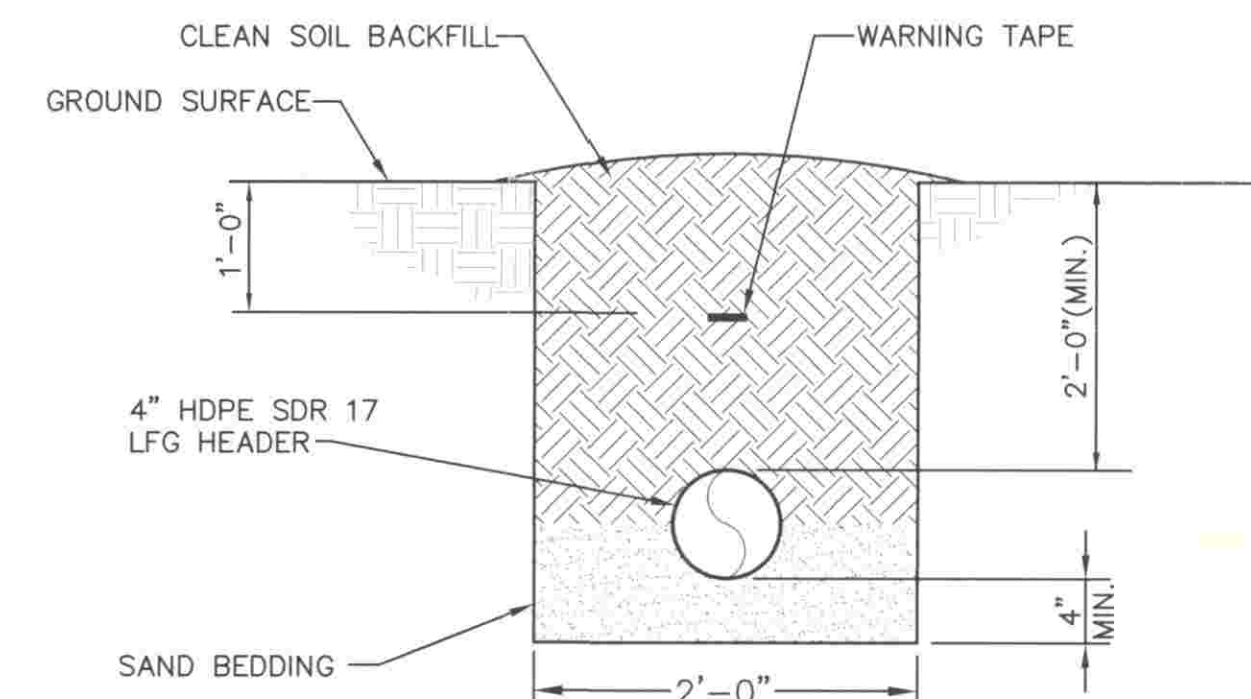
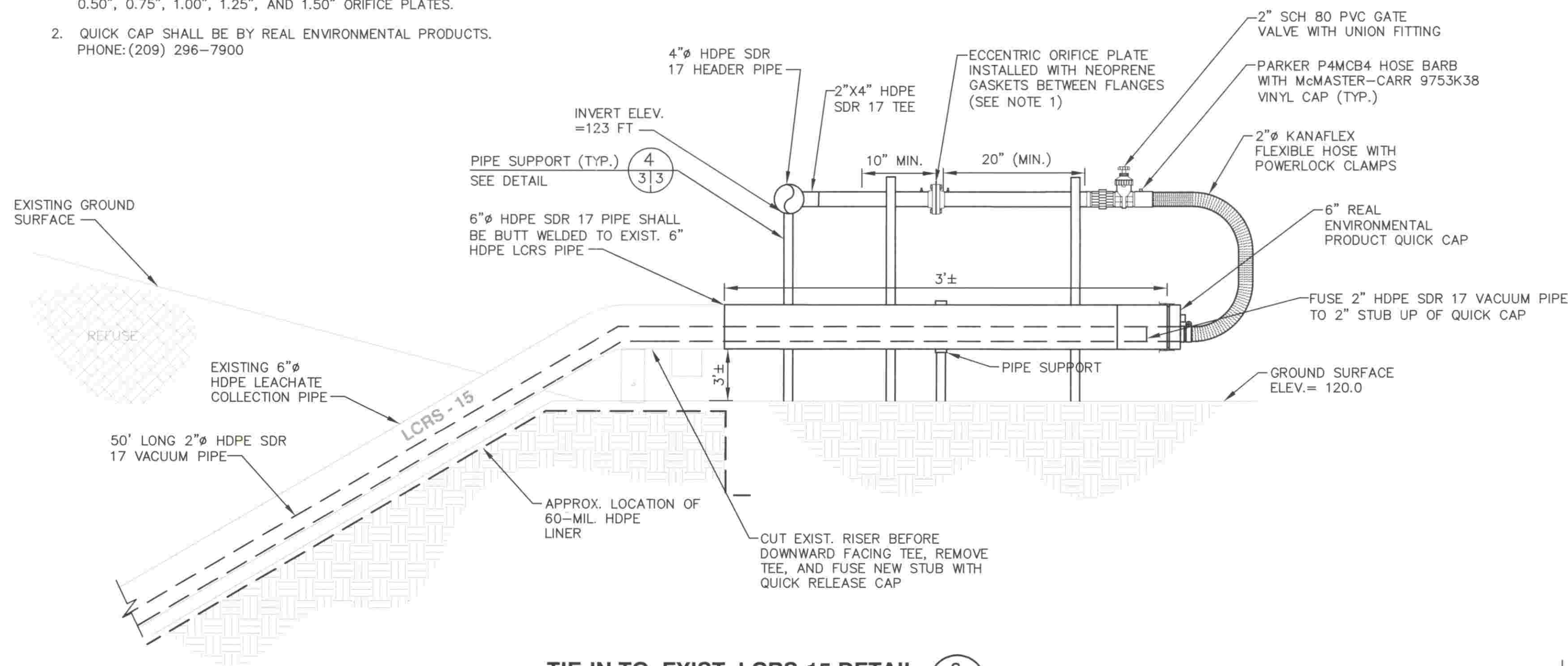




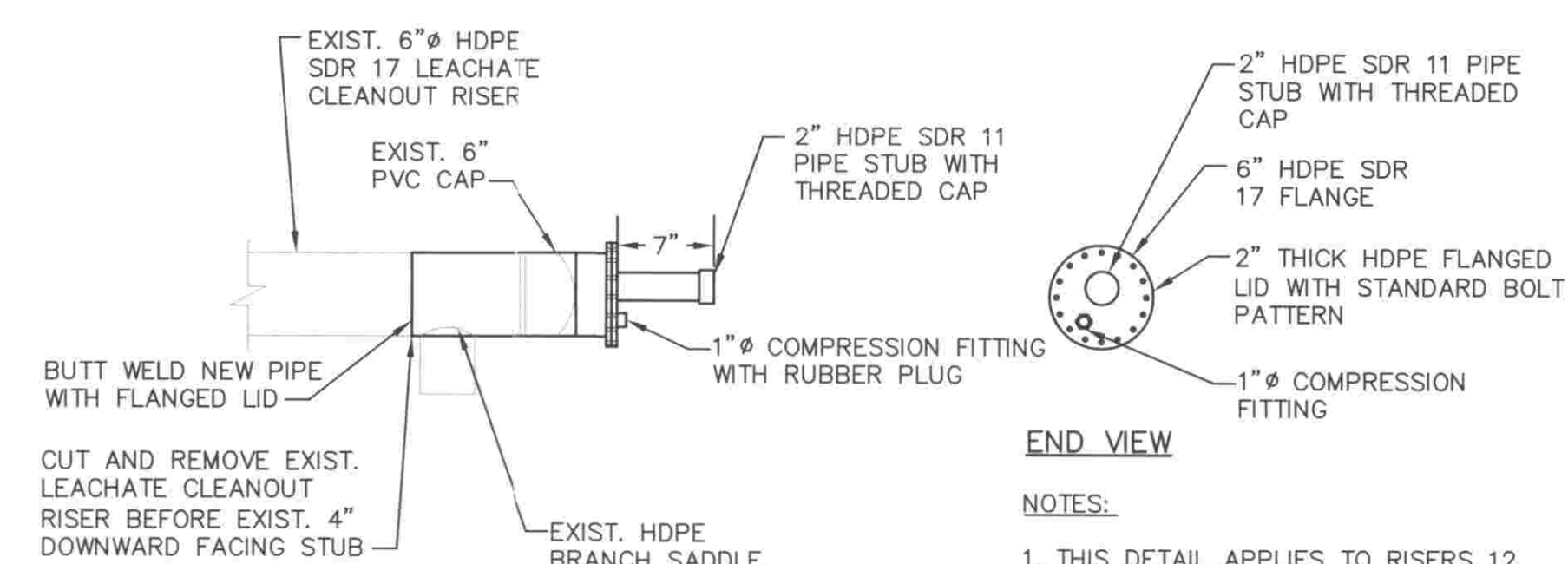
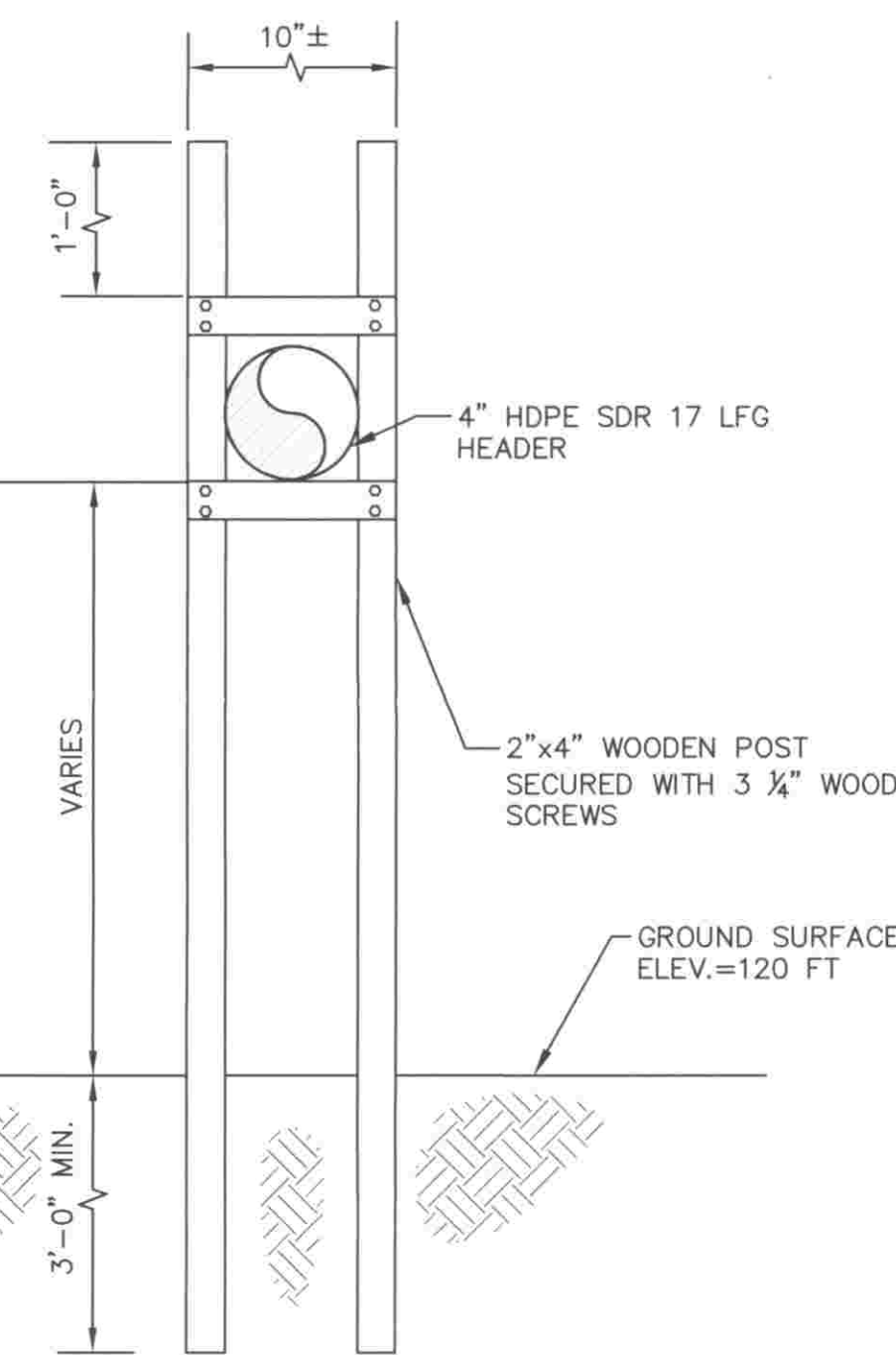
### LEACHATE SUMP RISERS 3 AND 5 LID MODIFICATION DETAIL



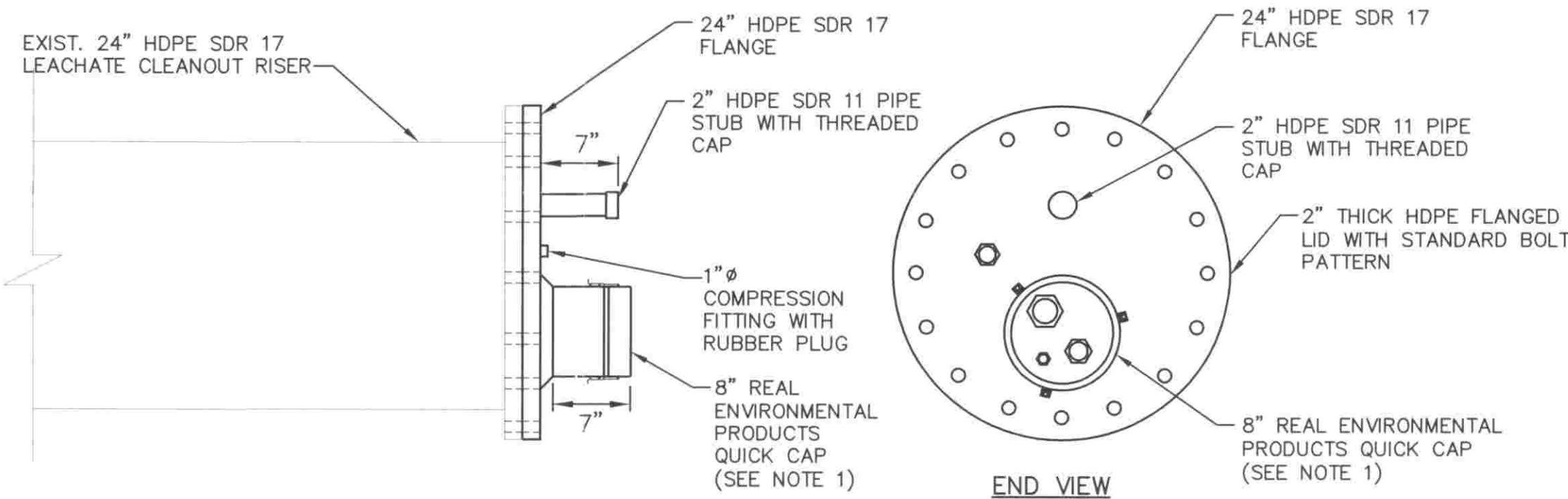
### ROAD CROSSING DETAIL



### HEADER PIPE TRENCH DETAIL

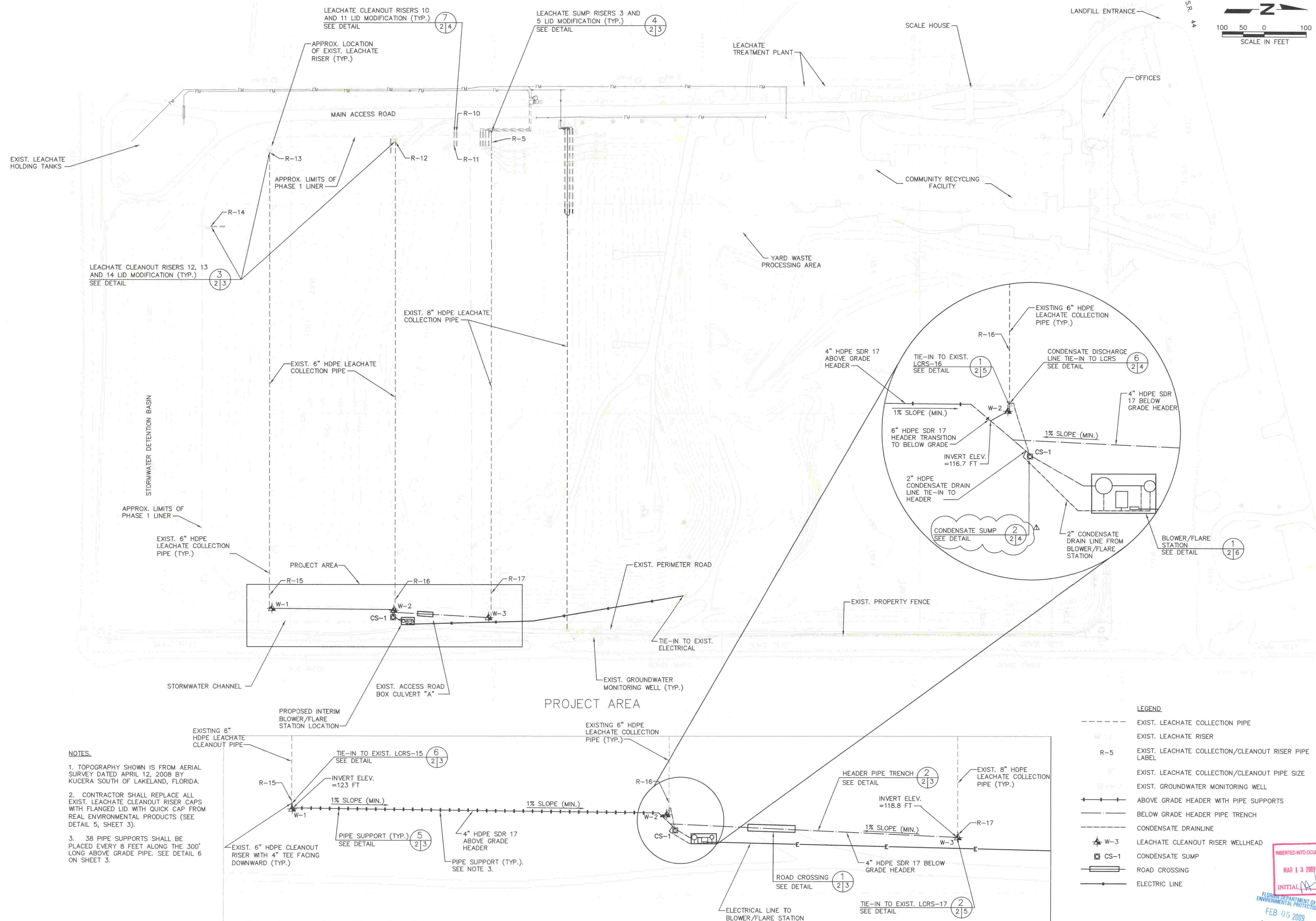


**24" LEACHATE SUMP RISER  
LID MODIFICATION DETAIL**  
NOT TO SCALE



1. QUICK CAP SHALL BE BY REAL ENVIRONMENTAL PRODUCTS. PHONE: (209) 296-7900
2. THIS DETAIL APPLIES TO RISERS 1, 2, 4, 6, 7, 8, AND 9. SEE SHEET 2.

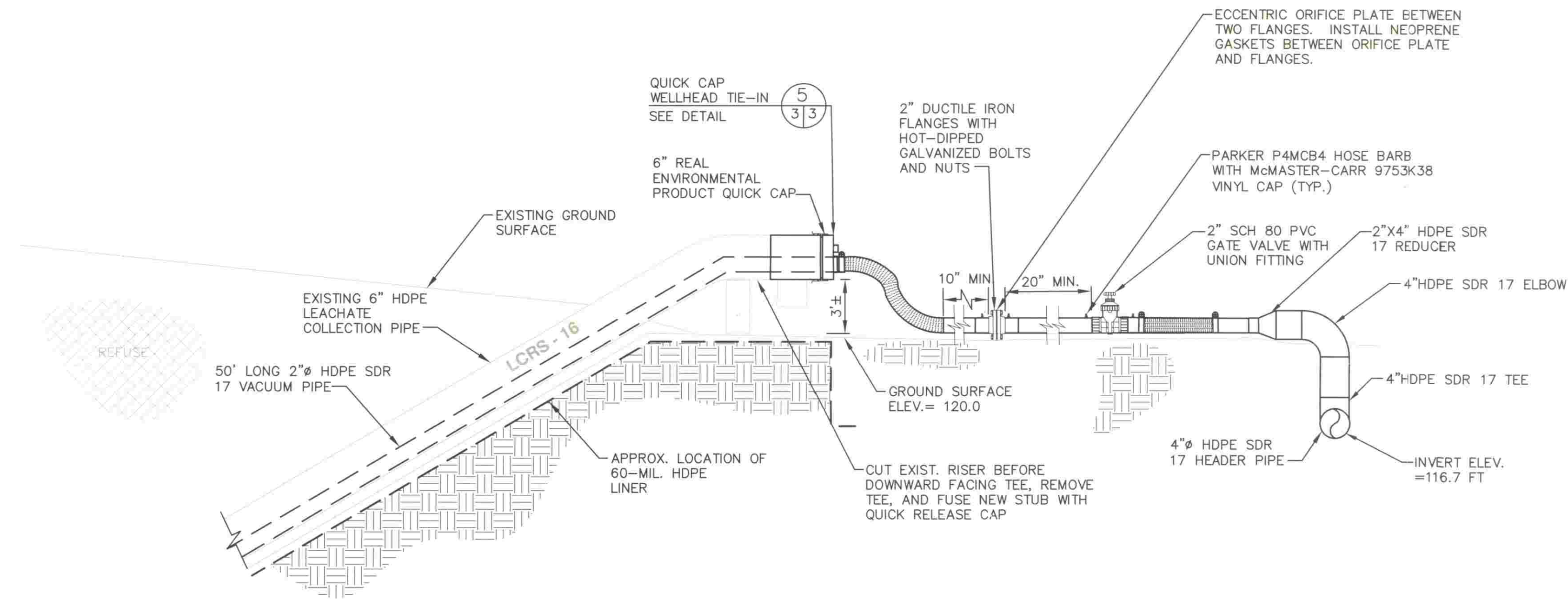




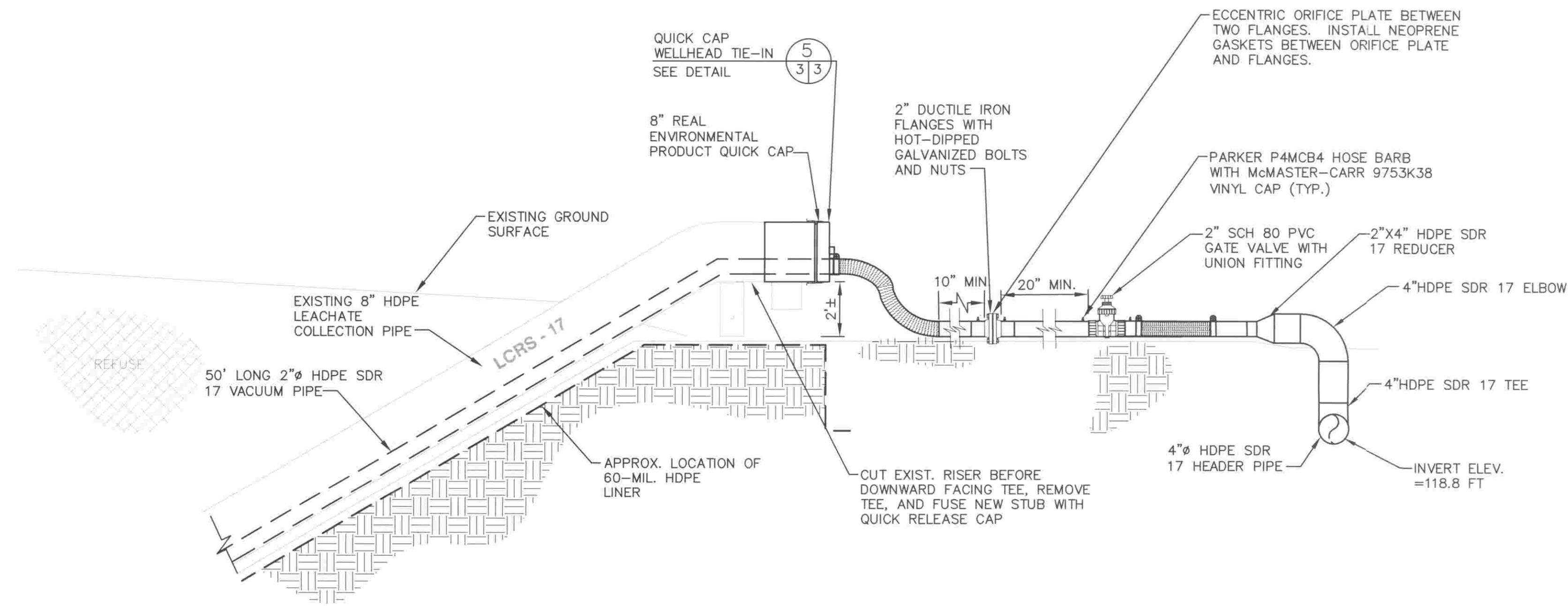








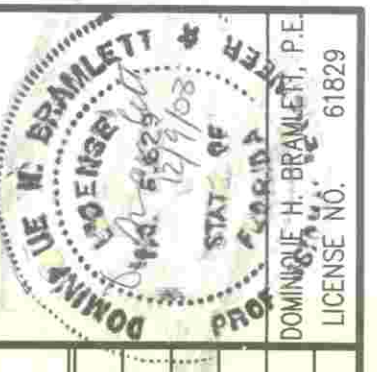
**TIE-IN TO EXIST. LCRS-16 DETAIL**  
NOT TO SCALE



**TIE-IN TO EXIST. LCRS-17 DETAIL**  
NOT TO SCALE

FLORIDA DEPARTMENT OF  
ENVIRONMENTAL PROTECTION  
DEC - 9 2008  
SOUTHWEST DISTRICT  
TAMPA

INSERTED INTO OCULUS  
JAN 15 2009  
INITIAL *ml*



REV	DATE	DESCRIPTION	BY
1			
2			
3			
4			
5			

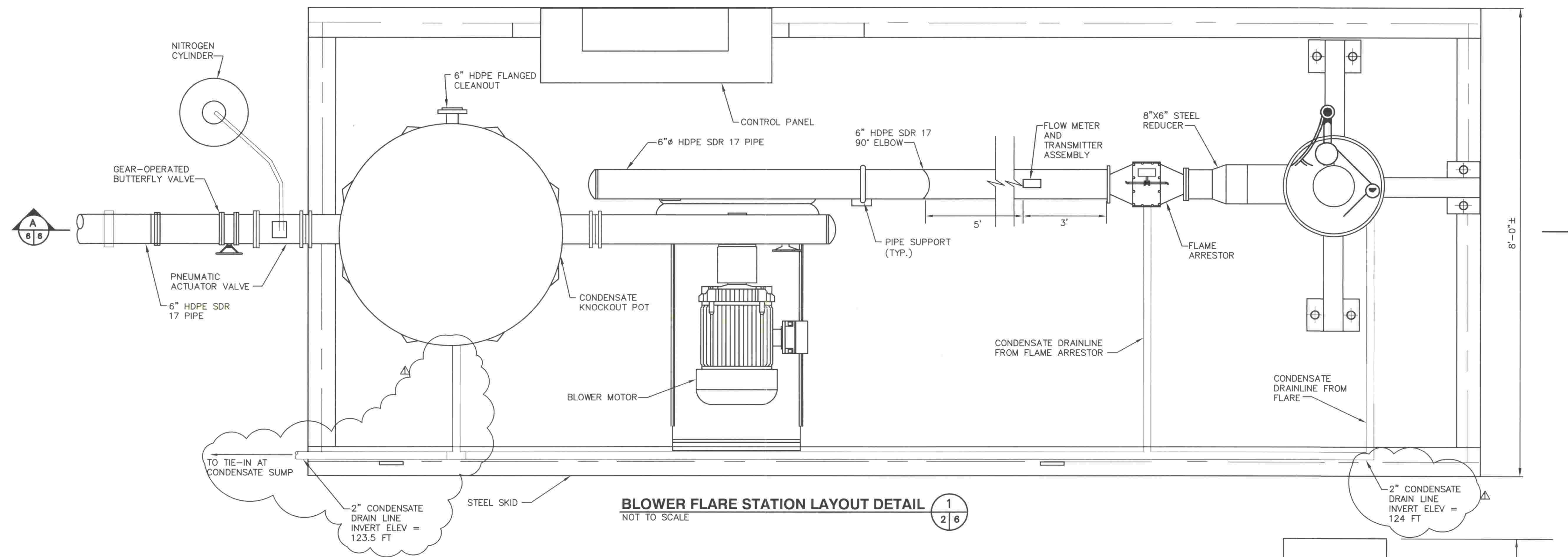
DRAWING TITLE	DETAILS - 3
PROJECT TITLE	CENTRAL LANDFILL INTERIM GAS COLLECTION AND CONTROL SYSTEM

CLIENT	CITRUS COUNTY SOLID WASTE MANAGEMENT DIVISION CITRUS COUNTY, FLORIDA
--------	--

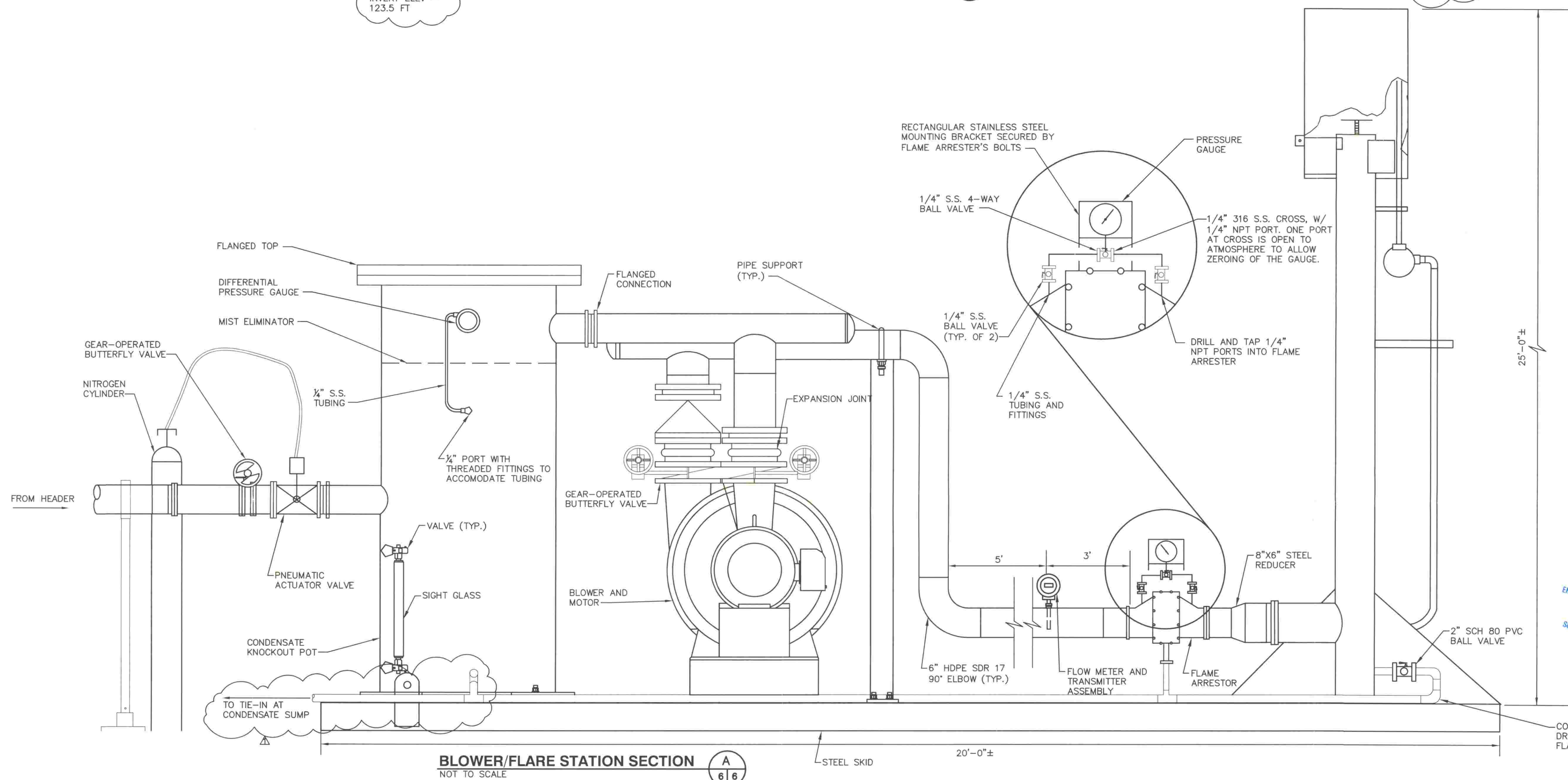
SCS ENGINEERS STEARNS, CONRAD AND SCHMIDT CONSULTING ENGINEERS 4041 PARK OAKS BLVD., SUITE 100, TAMPA, FL 33610 813 821-0800 FAX 813 823-4757	Q/A R/W BY: DHP APP BY: UAB
PROJ. NO. 09207049.03	DWN. BY: JNV/MM CHK. BY: DHB

CADD FILE:	0704903details1
DATE:	DECEMBER 2008
SCALE:	AS SHOWN
DRAWING NO.	5 of 6





**BLOWER FLARE STATION LAYOUT DETAIL**  
NOT TO SCALE



**BLOWER/FLARE STATION SECTION**  
NOT TO SCALE

**SCS ENGINEERS**  
STEARNS, CONRAD AND SCHMIDT  
CONSULTING ENGINEERS  
4041 PARK CIRCLE, SUITE 100, TAMPA, FL 33610  
813 821-0800 FAX 813 823-2757  
FLORIDA CERTIFICATE OF AUTHORIZATION NO. 00004892  
PROJ. NO. 0704903  
DATE: 09/20/04  
DESIGN BY: JNV/JMM  
CHECK BY: DHP  
APP. BY: JAB

**CITRUS COUNTY**  
**SOLID WASTE MANAGEMENT DIVISION**  
**CITRUS COUNTY, FLORIDA**

**DRAWING TITLE**  
BLOWER STATION LAYOUT

**PROJECT TITLE**  
CENTRAL LANDFILL  
GAS COLLECTION AND CONTROL  
SYSTEM INTERIM DESIGN

**CLIENT**  
CITRUS COUNTY  
SOLID WASTE MANAGEMENT DIVISION  
CITRUS COUNTY, FLORIDA

**CADD FILE:**  
0704903details1

**DATE:**  
DECEMBER 2008

**SCALE:**  
AS SHOWN

**DRAWING NO.**  
6

**BY**  
JMM

**DESCRIPTION**  
REVISED FOR RAI # 1

**DATE**  
01/20/09

**REV**  
A

FLORIDA DEPARTMENT OF  
ENVIRONMENTAL PROTECTION  
FEB 05 2009  
SOUTHWEST DISTRICT  
TAMPA

MAR 13 2009  
INITIAL