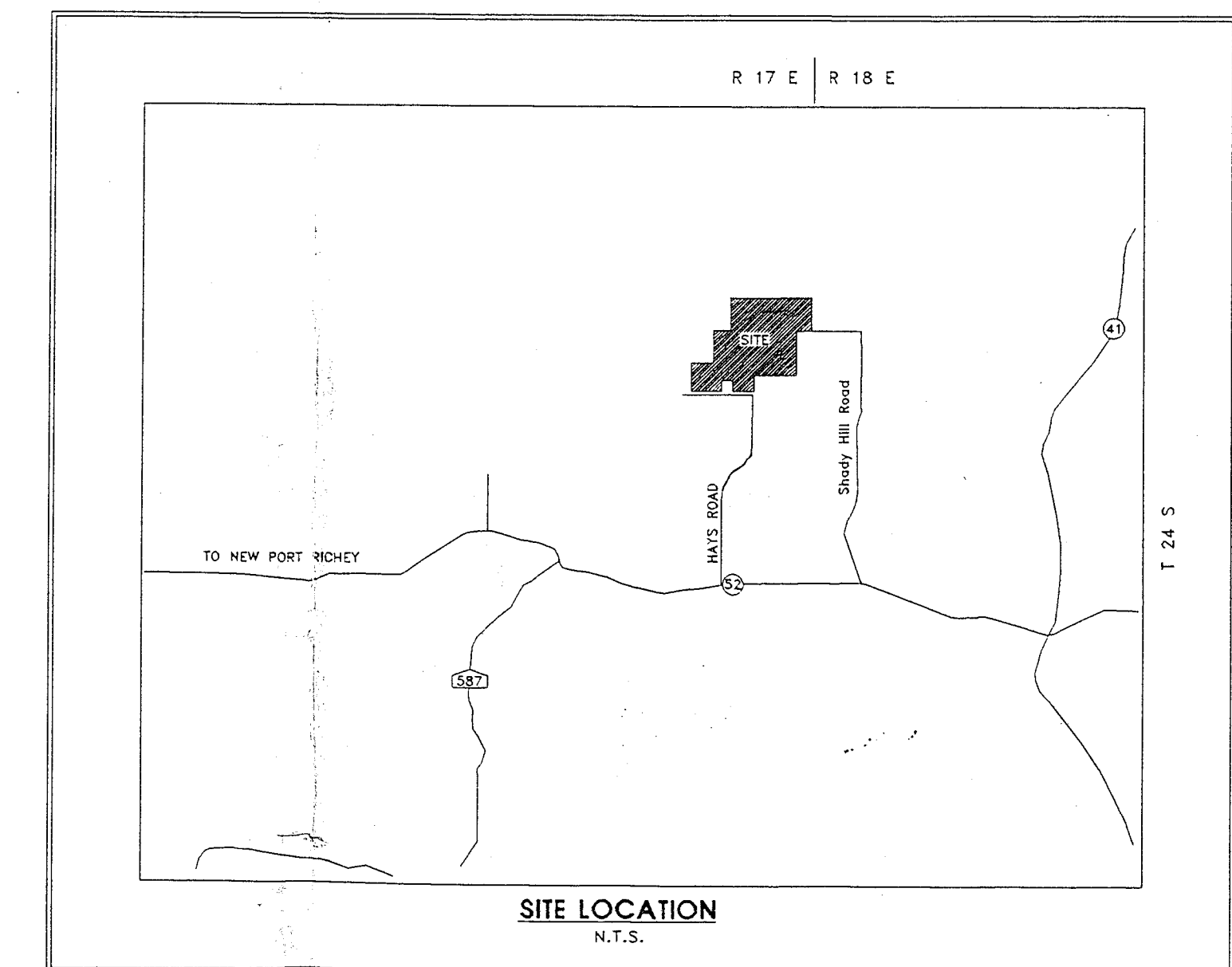
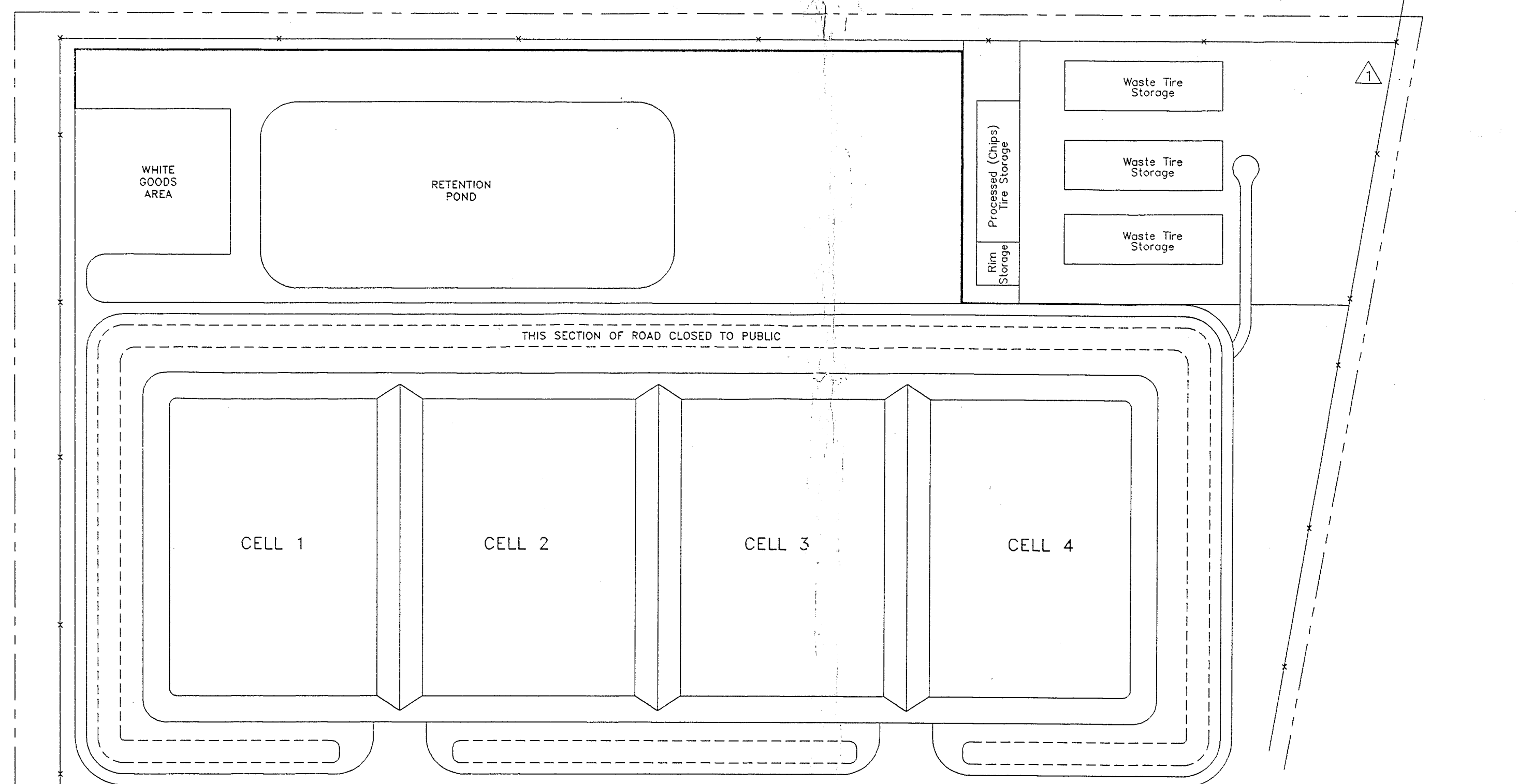


1315355 (1)

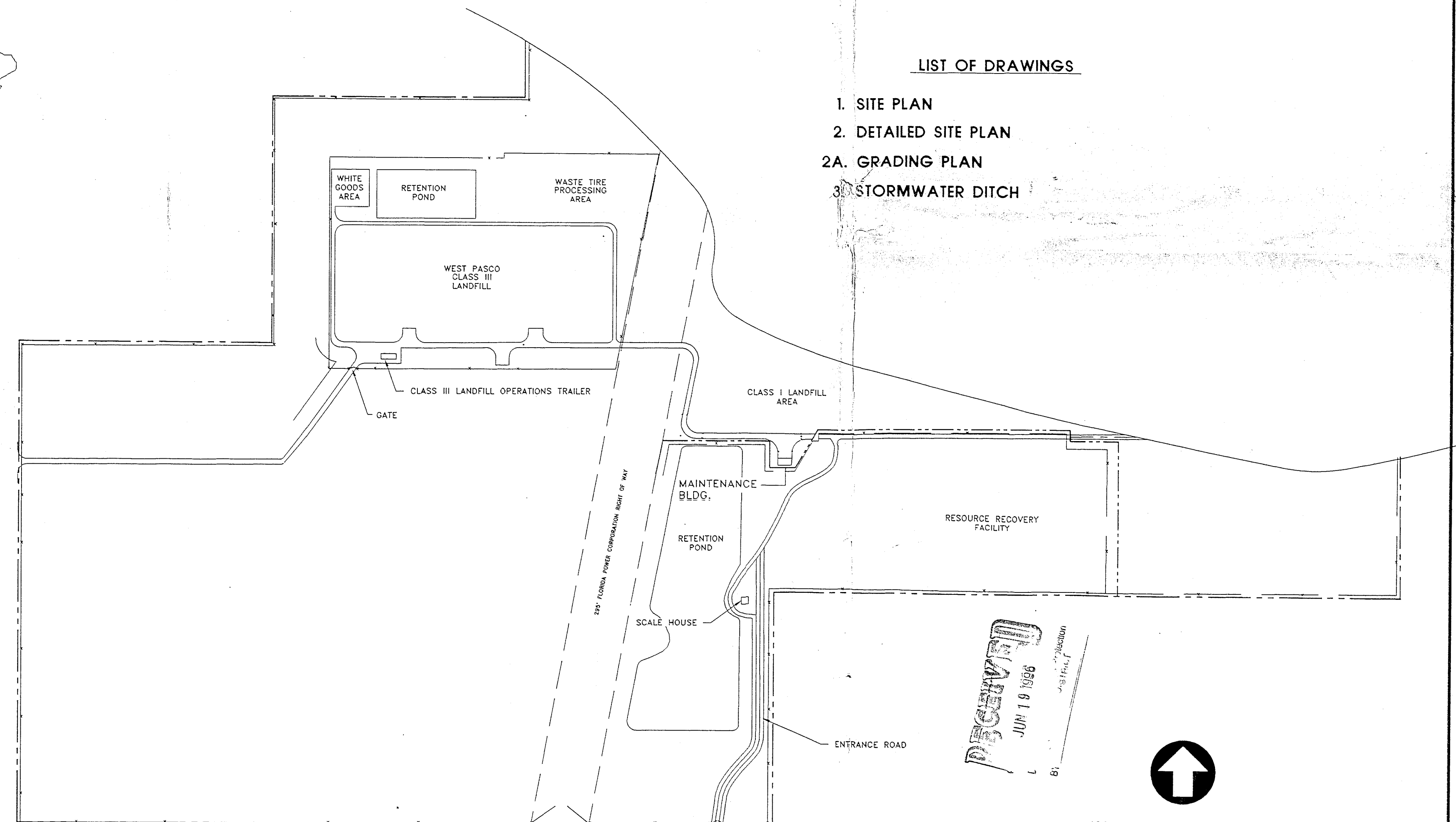
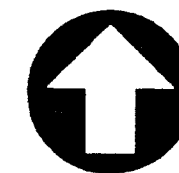
PREPARED BY
LAW ENGINEERING AND ENVIRONMENTAL SERVICES, INC.
TAMPA, FLORIDA



1. SITE PLAN
2. DETAILED SITE PLAN
- 2A. GRADING PLAN
3. STORMWATER DITCH



NOT TO SCALE







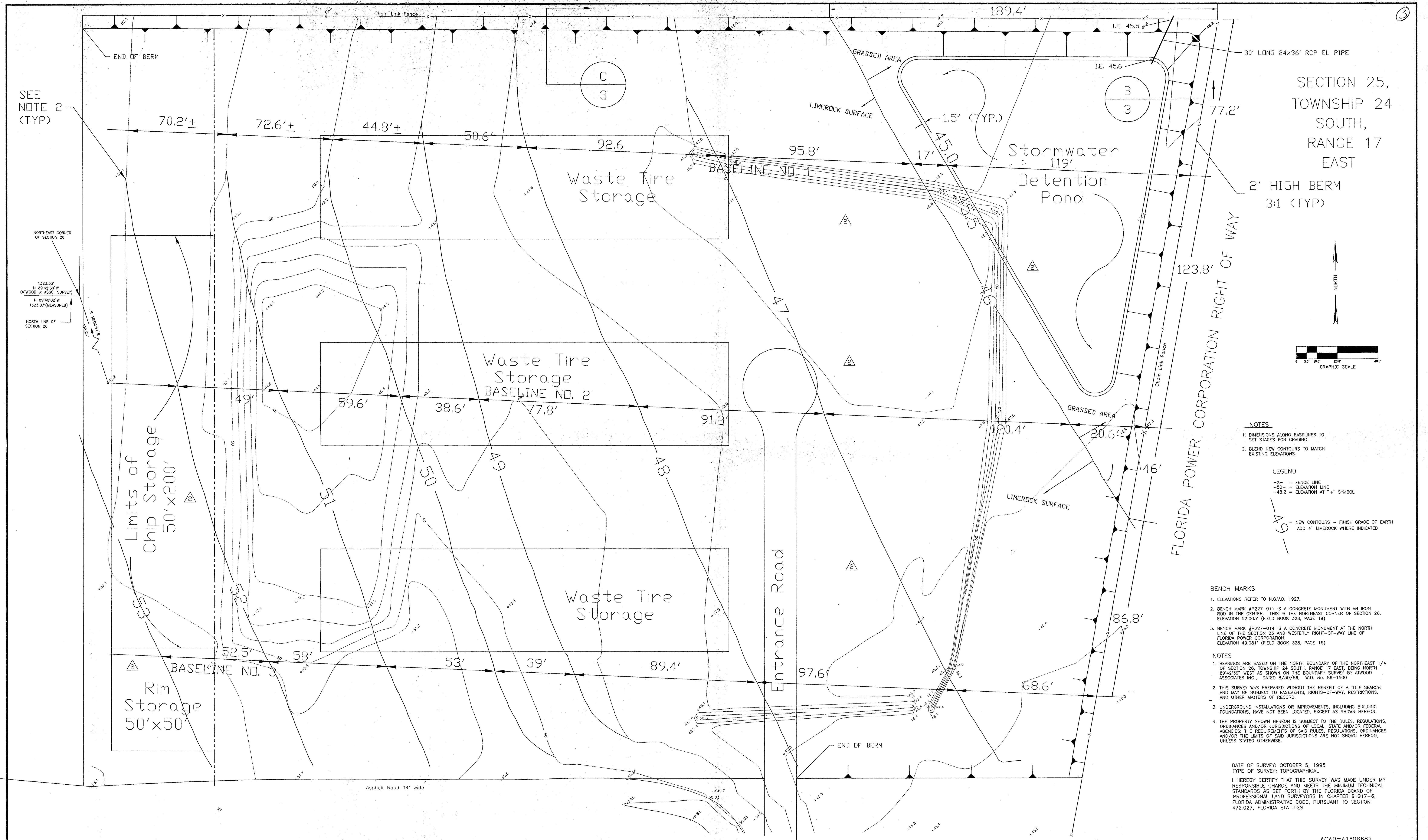
SITE PLAN

400 200 0 400

Scale In Feet

NOTE: BASE FROM RECORD DRAWINGS
by CDM, INC.

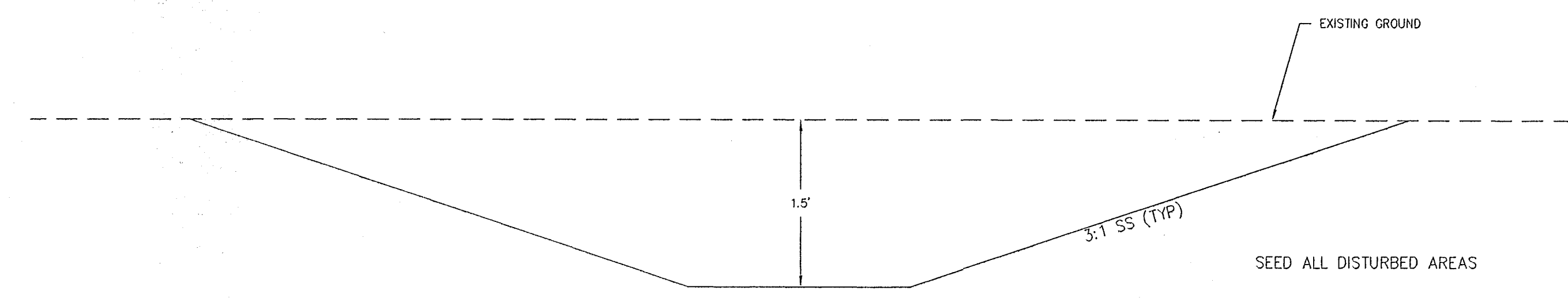
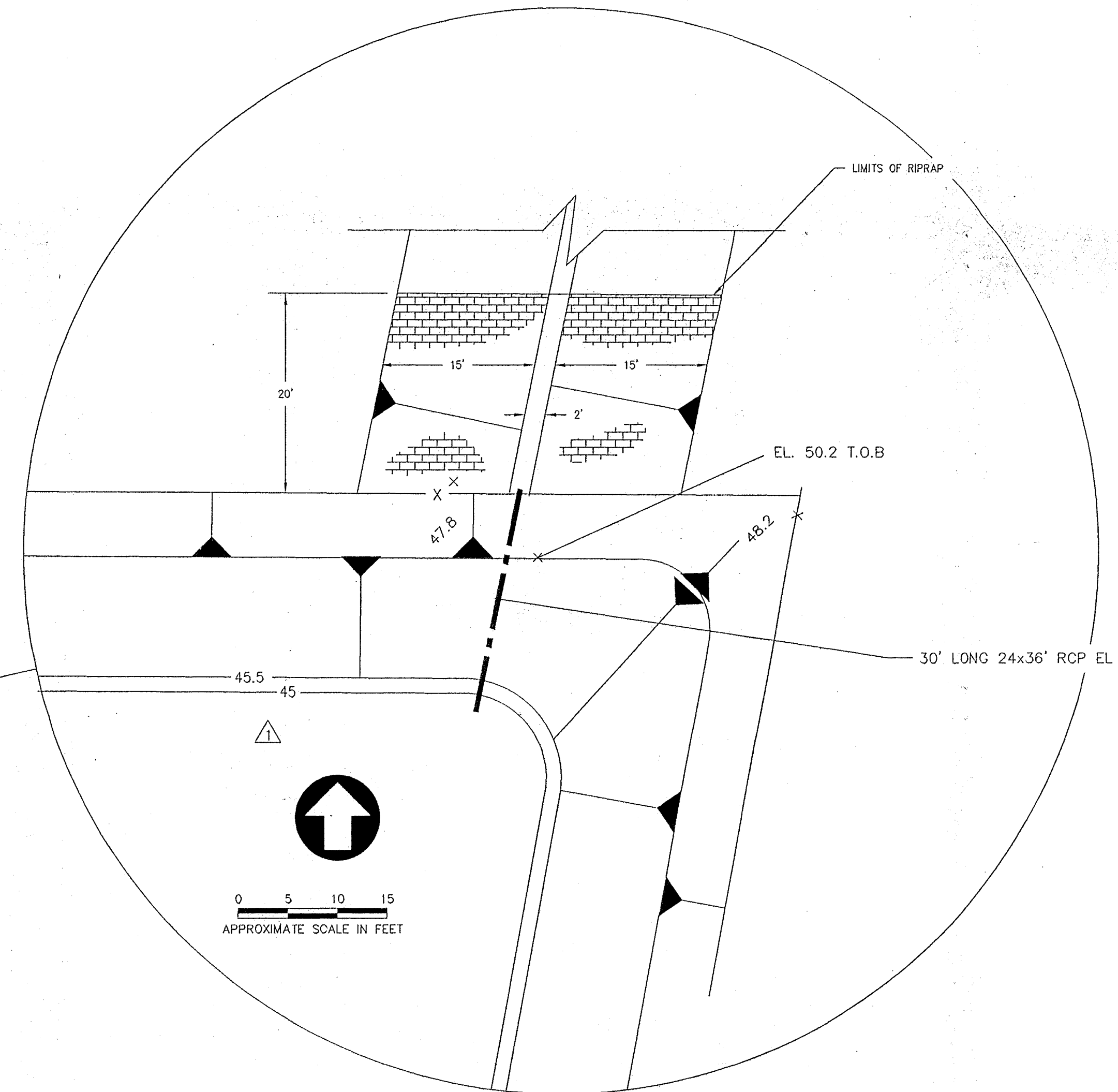
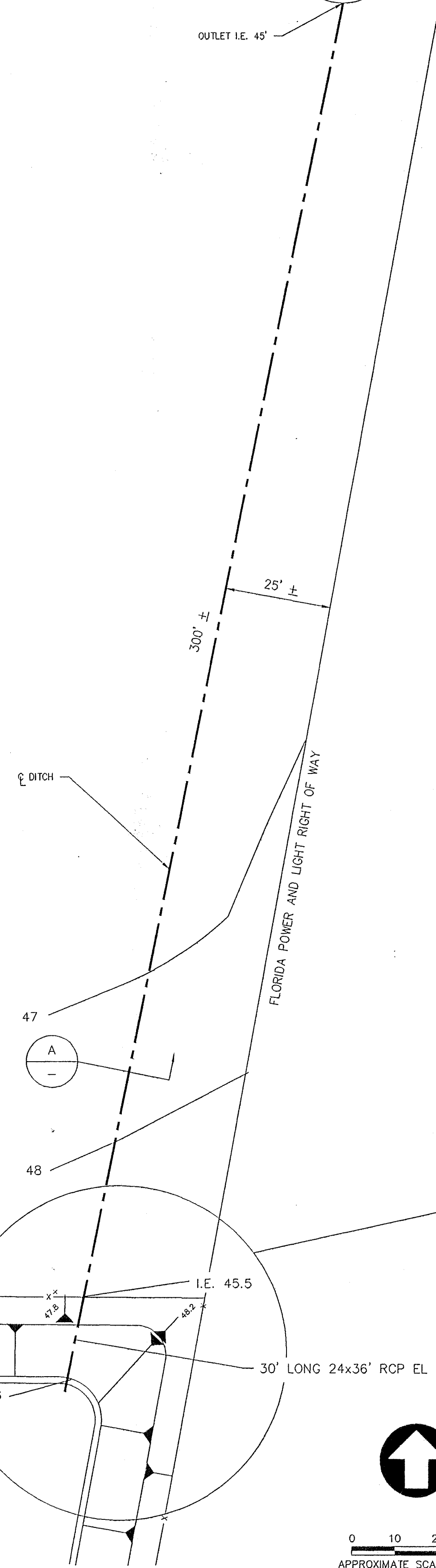
<table><tr><td>△</td><td>6/96</td><td>JFW</td><td></td><td>REM</td><td colspan="9">FDEP COMMENTS</td></tr><tr><td></td><td></td><td></td><td></td><td></td><td></td><td></td><td></td><td></td><td></td><td></td><td></td><td></td><td></td></tr><tr><td></td><td></td><td></td><td></td><td></td><td></td><td></td><td></td><td></td><td></td><td></td><td></td><td></td><td></td></tr><tr><td></td><td></td><td></td><td></td><td></td><td></td><td></td><td></td><td></td><td></td><td></td><td></td><td></td><td></td></tr><tr><td></td><td></td><td></td><td></td><td></td><td></td><td></td><td></td><td></td><td></td><td></td><td></td><td></td><td></td></tr><tr><td></td><td></td><td></td><td></td><td></td><td></td><td></td><td></td><td></td><td></td><td></td><td></td><td></td><td></td></tr><tr><td></td><td></td><td></td><td></td><td></td><td></td><td></td><td></td><td></td><td></td><td></td><td></td><td></td><td></td></tr><tr><td></td><td></td><td></td><td></td><td></td><td></td><td></td><td></td><td></td><td></td><td></td><td></td><td></td><td></td></tr><tr><td></td><td></td><td></td><td></td><td></td><td></td><td></td><td></td><td></td><td></td><td></td><td></td><td></td><td></td></tr><tr><td></td><td></td><td></td><td></td><td></td><td></td><td></td><td></td><td></td><td></td><td></td><td></td><td></td><td></td></tr><tr><td>REV</td><td>DATE</td><td>BY</td><td>SUB</td><td>APP</td><td colspan="4">DESCRIPTION</td><td>REV</td><td>DATE</td><td>BY</td><td>SUB</td><td>APP</td><td colspan="4">DESCRIPTION</td></tr><tr><td></td><td></td><td></td><td></td><td></td><td colspan="4"></td><td></td><td></td><td></td><td></td><td></td><td colspan="4"></td></tr></table>														△	6/96	JFW		REM	FDEP COMMENTS																																																																																																																																							REV	DATE	BY	SUB	APP	DESCRIPTION				REV	DATE	BY	SUB	APP	DESCRIPTION																						<table><tr><td>DESIGNED</td><td>JFW/REM</td></tr><tr><td>DRAWN</td><td>JFW</td></tr><tr><td>CHECKED</td><td>REM</td></tr><tr><td>IN CHARGE</td><td>REM</td></tr><tr><td>DATE</td><td>2/96</td></tr></table>		DESIGNED	JFW/REM	DRAWN	JFW	CHECKED	REM	IN CHARGE	REM	DATE	2/96			<table><tr><td colspan="2">PASCO COUNTY BOARD OF COUNTY COMMISSIONERS</td></tr><tr><td colspan="2">UTILITY SERVICES BRANCH</td></tr></table>				PASCO COUNTY BOARD OF COUNTY COMMISSIONERS		UTILITY SERVICES BRANCH		<table><tr><td></td><td>LAW ENGINEERING AND ENVIRONMENTAL SERVICES</td></tr></table>			LAW ENGINEERING AND ENVIRONMENTAL SERVICES	<table><tr><td>SUBMITTED</td><td><i>Barbara L. SE</i></td></tr><tr><td>APPROVED</td><td><i>Richard E. Maizer</i></td></tr></table>				SUBMITTED	<i>Barbara L. SE</i>	APPROVED	<i>Richard E. Maizer</i>	<table><tr><td colspan="2">WASTE TIRE PROCESSING FACILITY</td></tr><tr><td colspan="2">WEST PASCO LANDFILL</td></tr><tr><td colspan="2">PASCO COUNTY, FLORIDA</td></tr></table>				WASTE TIRE PROCESSING FACILITY		WEST PASCO LANDFILL		PASCO COUNTY, FLORIDA		ACAD=41508683	
△	6/96	JFW		REM	FDEP COMMENTS																																																																																																																																																																																																																																						
REV	DATE	BY	SUB	APP	DESCRIPTION				REV	DATE	BY	SUB	APP	DESCRIPTION																																																																																																																																																																																																																													
DESIGNED	JFW/REM																																																																																																																																																																																																																																										
DRAWN	JFW																																																																																																																																																																																																																																										
CHECKED	REM																																																																																																																																																																																																																																										
IN CHARGE	REM																																																																																																																																																																																																																																										
DATE	2/96																																																																																																																																																																																																																																										
PASCO COUNTY BOARD OF COUNTY COMMISSIONERS																																																																																																																																																																																																																																											
UTILITY SERVICES BRANCH																																																																																																																																																																																																																																											
	LAW ENGINEERING AND ENVIRONMENTAL SERVICES																																																																																																																																																																																																																																										
SUBMITTED	<i>Barbara L. SE</i>																																																																																																																																																																																																																																										
APPROVED	<i>Richard E. Maizer</i>																																																																																																																																																																																																																																										
WASTE TIRE PROCESSING FACILITY																																																																																																																																																																																																																																											
WEST PASCO LANDFILL																																																																																																																																																																																																																																											
PASCO COUNTY, FLORIDA																																																																																																																																																																																																																																											
														SCALE		AS NOTED																																																																																																																																																																																																																											
														CONTRACT		40141-5-0868.0003																																																																																																																																																																																																																											
														DWG NO.		1	REV	PAGE NO.																																																																																																																																																																																																																									



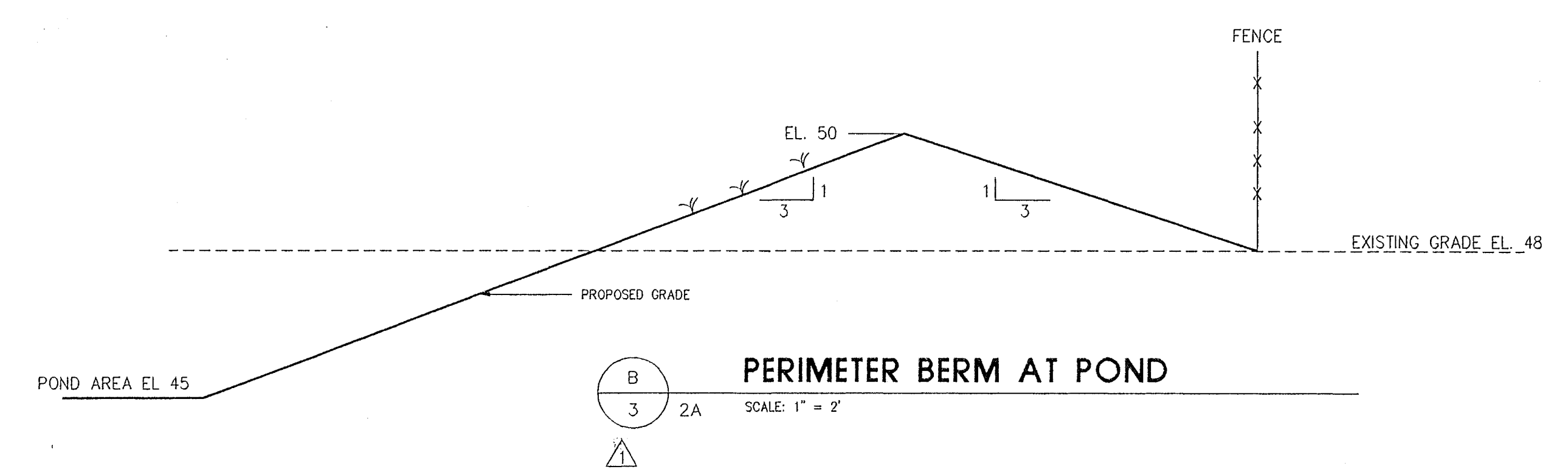
<div>4/96 REM REM REM FDEP CHANGES</div>										<div>DESIGNED JFW/REM</div>										<div>PASCO COUNTY BOARD of COUNTY COMMISSIONERS UTILITY SERVICES BRANCH</div>										<div>WASTE TIRE PROCESSING FACILITY WEST PASCO LANDFILL PASCO COUNTY, FLORIDA</div>										<div>SCALE</div>																							
<div>6/96 JFW REM REM FDEP CHANGES</div>										<div>DRAWN JFW</div>																														<div>AS NOTED</div>																							
<div></div>										<div>CHECKED REM</div>										<div><div>PAUL D. E. MAY JR. REGISTERED PROFESSIONAL ENGINEER FLORIDA 14177</div><div>for the 2nd</div></div>										<div><div>LAW</div><div>ENGINEERING AND ENVIRONMENTAL SERVICES</div><div>Richard E. May Jr</div></div>										<div>CONTRACT</div>																							
<div></div>										<div>IN CHARGE REM</div>																														<div>40141-5-0868.0003</div>																							
<div>REV DATE BY SUB APP DESCRIPTION</div>										<div>REV DATE BY SUB APP DESCRIPTION</div>										<div>DATE REM 2/96</div>										<div>SUBMITTED</div>										<div>APPROVED</div>										<div>GRADING PLAN</div>										<div>DWG NO 2A</div>		<div>REV PAGE NO.</div>	

4

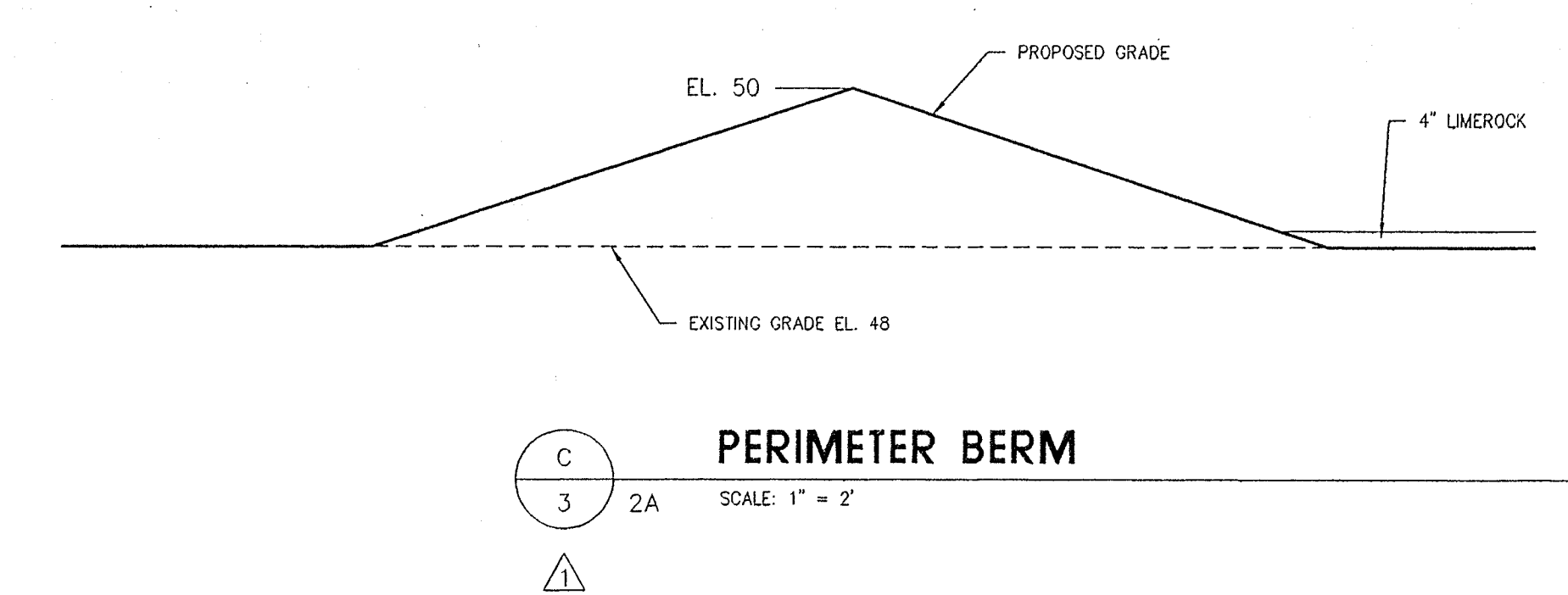
EXISTING BORROW AREA
OUTLET I.E. 45'



A
TYPICAL DITCH CROSS SECTION



B
3
2A
PERIMETER BERM AT POND
SCALE: 1" = 2'



C
3
2A
PERIMETER BERM
SCALE: 1" = 2'

6/96 JFW REM FDEP COMMENTS				DESIGNED JFW/REM				PASCO COUNTY BOARD of COUNTY COMMISSIONERS				WASTE TIRE PROCESSING FACILITY				SCALE			
				DRAWN JFW				UTILITY SERVICES BRANCH				WEST PASCO LANDFILL				AS NOTED			
				CHECKED REM								PASCO COUNTY, FLORIDA				CONTRACT			
				IN CHARGE REM												40141-5-0868.0003			
REV DATE BY SUB APP DESCRIPTION				DATE 2/96				SUBMITTED Jonathan W. Gil				APPROVED Richard E. May Jr				DWG NO 3			
																REV PAGE NO.			