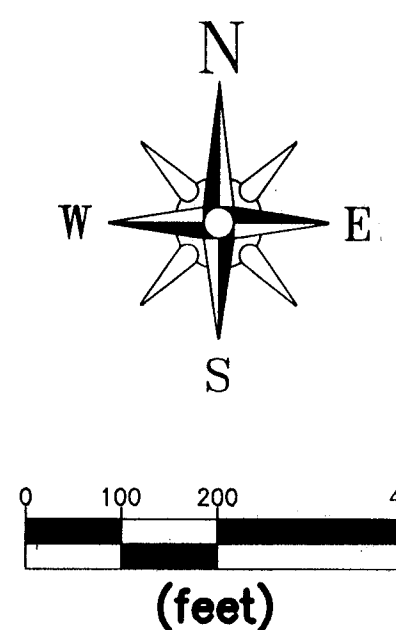
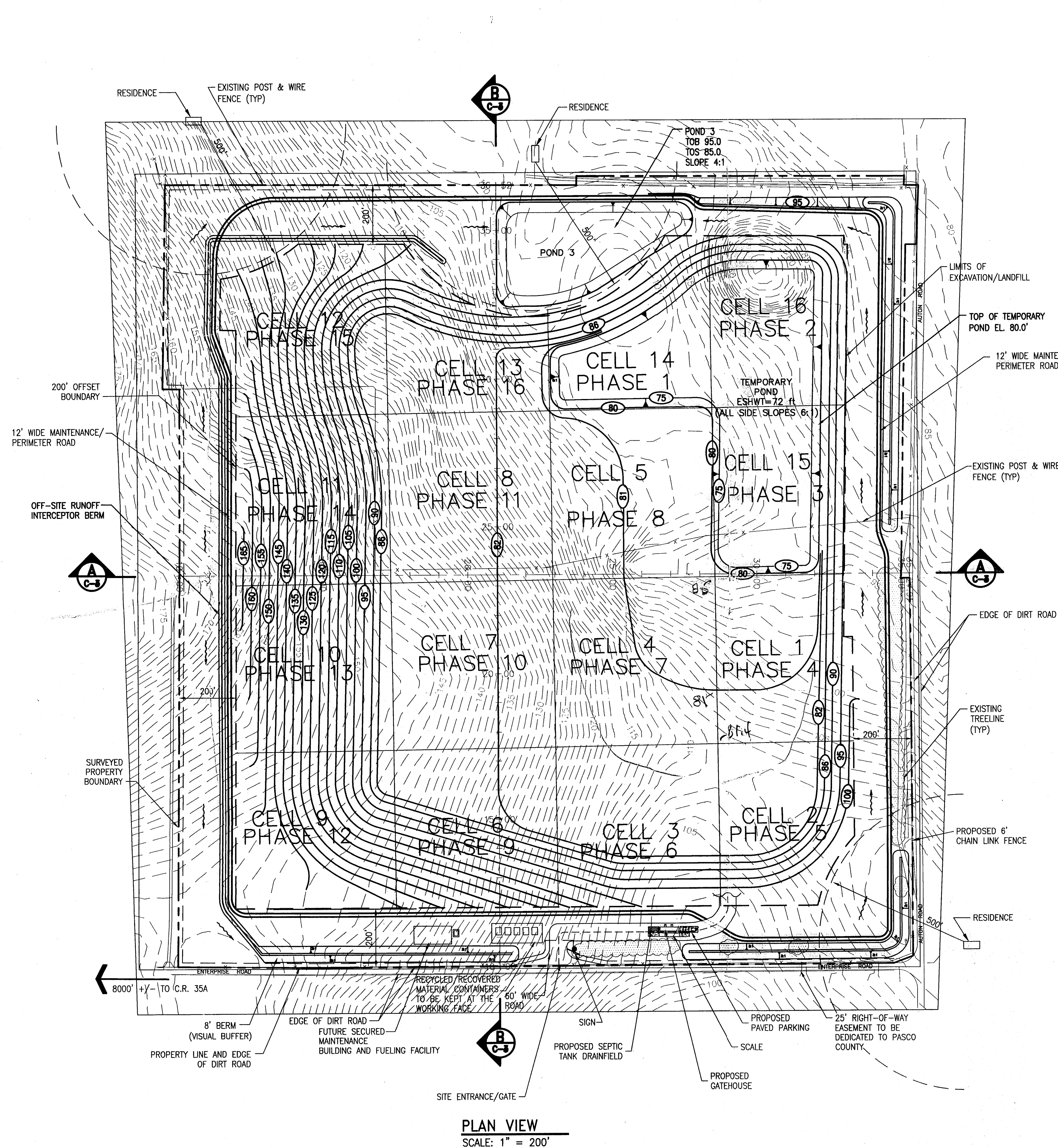
[illegible]

C-1 SITE PLAN		G-1 GENERAL NOTES AND CROSS SECTIONS	
C-2	EXCAVATION PLAN	L-1	LANDSCAPE PLAN (1"=50')
C-3	SITE CROSS SECTIONS	L-2	LANDSCAPE PLAN (1"=50')
C-4	SITE CROSS SECTIONS	L-3	LANDSCAPE PLAN (1"=50')
C-5	FINAL GRADING PLAN	L-4	LANDSCAPE PLAN (1"=50')
C-6	LANDSCAPE PLAN		



LEGEND

EXISTING CONTOUR LINE
(ft, NGVD) 3/31/2000

PROPOSED EXCAVATION
CONTOUR LINE (ft. NGVD)

LINE OF CROSS SECTION

PIEZOMETER LOCATION

EXISTING WELL BY OTHERS

EXISTING POST & WIRE FENCE

CELL 1
PHASE 1

LANDFILL SETBACK LINE

Site	Stratum	Surf1	Surf2	Volume yards	Table: Unadjusted Cut	yards	Fill	yards	Net Method
ENTERPRISE ROAD MINE	combined	eg	FG-MINE		4351704		4637572		8989276

NOTE:

1.) 6:1 MINE SLOPES TO BE CUT BACK TO 2:1 SLOPES PRIOR TO THE RECLAMATION BY LANDFILLING.

2.) DURING THE EXCAVATION PHASE, POND 3 WILL MAINLY RECEIVE THE OFF-SITE RUNOFF AND ALSO THE RUNOFF FROM THE AREAS OUTSIDE THE LANDFILL SETBACK LINE.

FLORIDA DEPARTMENT OF
ENVIRONMENTAL PROTECTION

JUN 21 2001

SOUTHWEST DISTRICT
TALLAHASSEE

R:\CAN\NWG\1999\99-331.01\Phase 5\FINAL\C-2.dwg




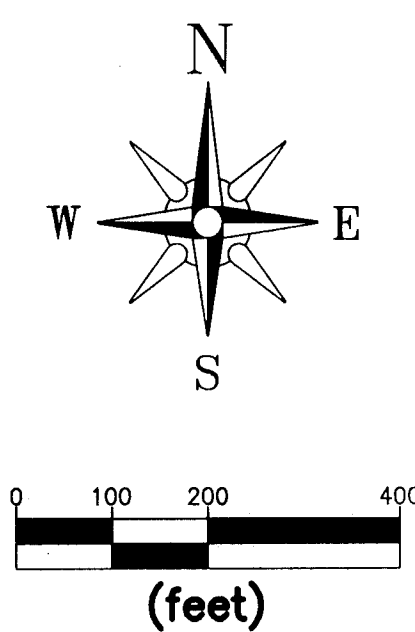
HARTMAN & ASSOCIATES, INC.
engineers, hydrogeologists, surveyors & management consultants

201 EAST PINE STREET - SUITE 1000 - ORLANDO, FL 32801
TELEPHONE (407) 839-3955 - FAX (407) 839-3790

SID LARKIN & SON, INC.
PASCO COUNTY, FLORIDA

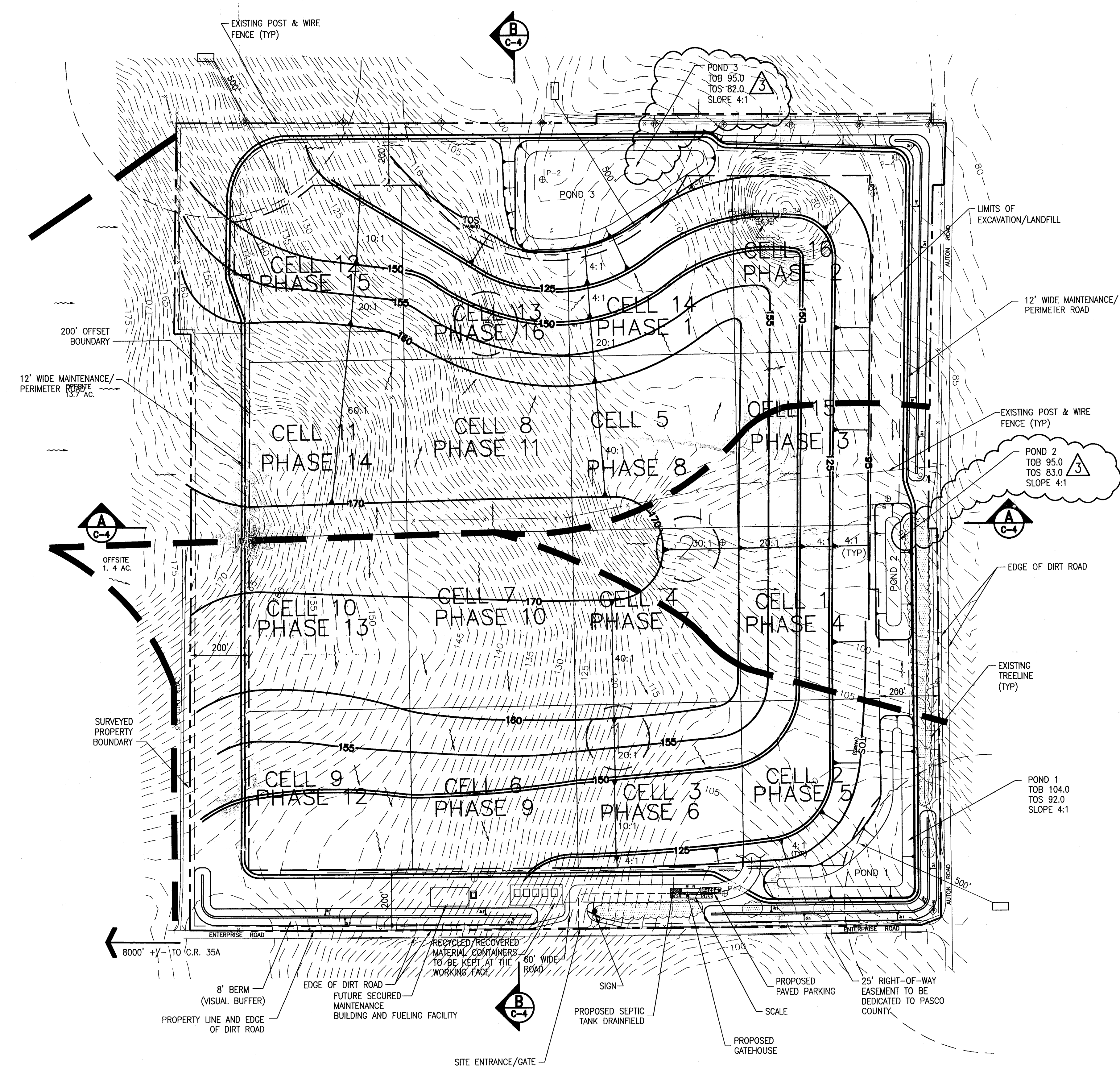
ENTERPRISE RECYCLING & DISPOSAL FACILITY MINE EXCAVATION PLAN

					<div>Robert K. Cash, P.E. 201 South Pine Street, Suite 300 Tallahassee, Florida 32301 Engineered Building No. 581</div> 		BY	DATE	PROJECT NO.	
							DESIGNED	JEG	4/00	99-331.01
							DRAWN	TJL		SCALE
							CHECKED	RKC	4/00	1" = 200'
							APPROVAL			C-2
11/00	EXPAND TEMPORARY POND			ACD	RKC					
8/00	PER PASCO COUNTY SETBACKS			JEG	RKC					
DATE	REVISIONS			REVISED	CHECKED	DATE	FILE:	C-2.dwg	SHEET - OF -	



LEGEND

- 108 --- EXISTING CONTOUR LINE
(ft, NGVD) 3/31/2000
- (108) --- PROPOSED FINAL GRADE
CONTOUR LINE (ft, NGVD)
- B --- LINE OF CROSS SECTION
- P-1 PIEZOMETER LOCATION
- DW-1 EXISTING WELL BY OTHERS
- EXISTING POST & WIRE FENCE
- CELL 15
PHASE 1 RECLAMATION / LANDFILL CELL
PHASE IDENTIFICATION NUMBER
- DRAINAGE BASIN BOUNDARY
- DRAINAGE SWALE
- DRAINAGE FLOW ARROW
- (3) DRAINAGE BASIN NUMBER
- LANDFILL SETBACK LINE



PLAN VIEW
SCALE: 1" = 200'

FLORIDA DEPARTMENT OF
ENVIRONMENTAL PROTECTION
JUN 21 2001
SOUTHWEST DISTRICT
TAMPA

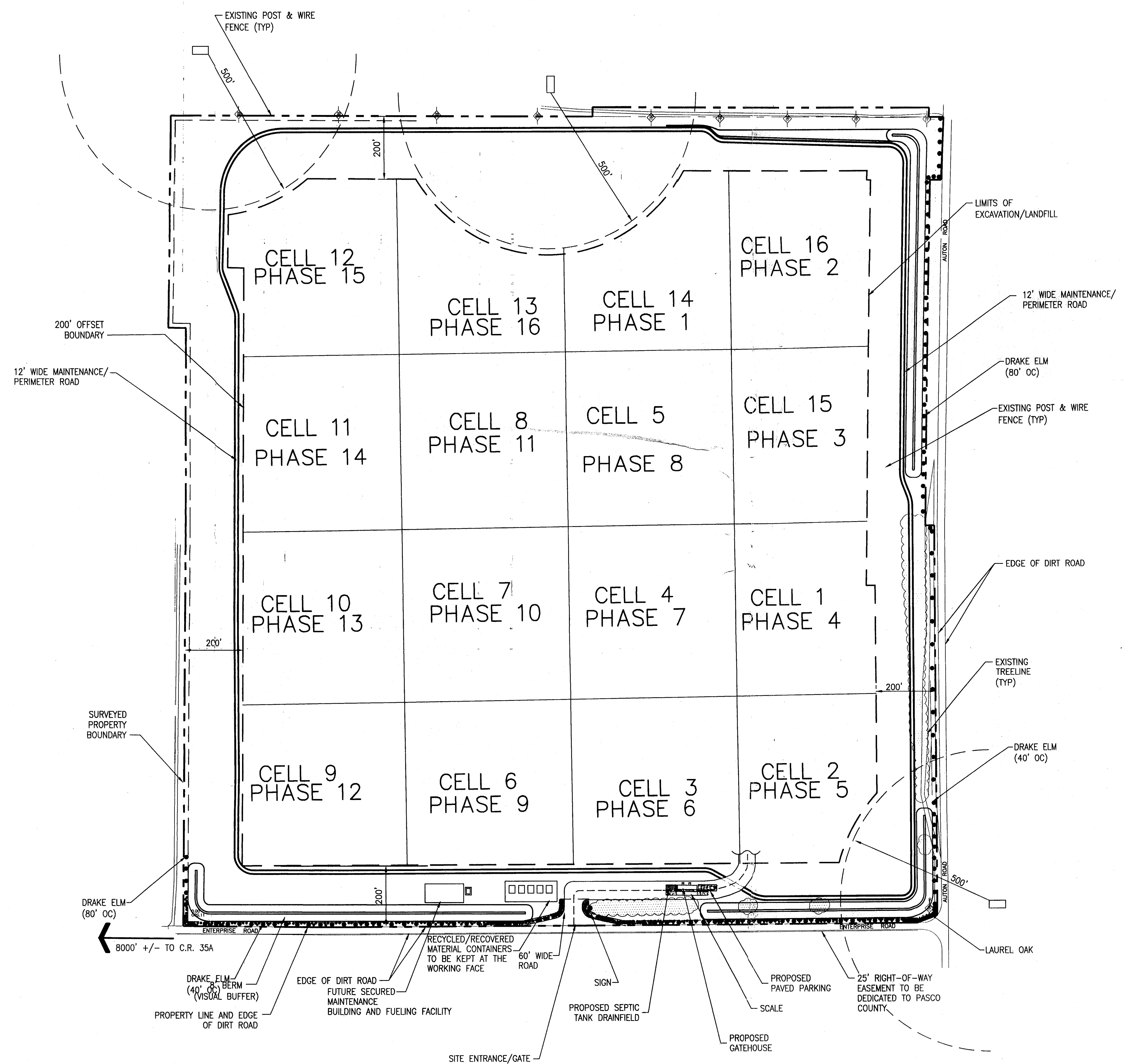
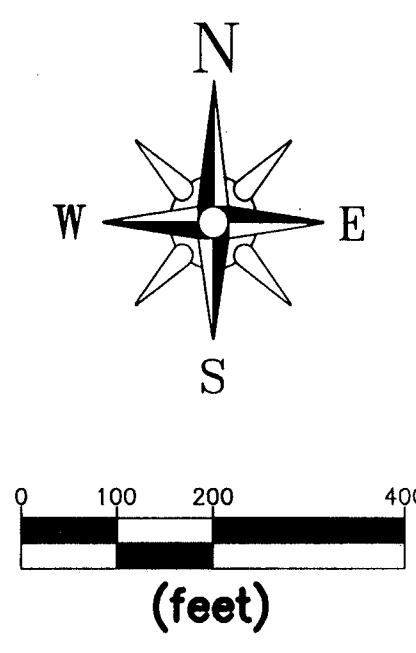
C:\G:\JUN\1999\99-331.01\Phase 5\PHASE 5.dwg
Plotted: Jun 19, 2001 - 2:55pm

HARTMAN & ASSOCIATES, INC.
engineers, hydrogeologists, surveyors & management consultants
201 EAST PINE STREET - SUITE 1000 - ORLANDO, FL 32801
TELEPHONE (407) 839-3955 - FAX (407) 839-3790

SID LARKIN & SON, INC.
PASCO COUNTY, FLORIDA

**ENTERPRISE RECYCLING &
DISPOSAL FACILITY
FINAL GRADE PLAN**

										PROJECT NO.	99-331.01
										SCALE	1" = 200'
										C-5	
										SHEET - OF -	
03/01	REVIS	11/00	REVISED AS PER FDEP	ACD	RKC	8/00	REVISED COVER	ACD	RKC	DESIGNED	JEG 4/00
8/00	REVISED	PER PASCO COUNTY SETBACKS	JEG	RKC	CHECKED	RKC 4/00	QC APPROVAL			BY	TJL 4/00
DATE	REVISIONS	REVISED	CHECKED	DATE	FILE: C-5.dwg						



- LEGEND**
- 108 ——— EXISTING CONTOUR LINE (ft, NGVD)
 - 108 ——— PROPOSED EXCAVATION CONTOUR LINE (ft, NGVD)
 - LINE OF CROSS SECTION
 - P-1 ——— PIEZOMETER LOCATION
 - DW-1 ——— EXISTING WELL BY OTHERS
 - EXISTING POST & WIRE FENCE
 - RECLAMATION / LANDFILL CELL
 - LANDFILL SETBACK LINE

LANDSCAPE LEGEND

SYMBOL	SPECIES	QUANTITY	SIZE AT TIME OF PLANTING
	DRAKE ELM (<i>Ulmus parvifolia</i>)	2	1 1/2" (DBH)
	LAUREL OAK (<i>Quercus laurifolia</i>)	2	1 1/2" (DBH)
	SPARKLE BERRY (<i>Vaccinium Arboreum</i>)		18" MINIMUM HEIGHT AT TIME OF PLANTING AND 30" IN HEIGHT WITHIN ONE YEAR OF PLANTING
	PHOTINIA 'RED TIP' (<i>Photinia fraseri</i>)		24" MINIMUM HEIGHT AT TIME OF PLANTING AND 30" IN HEIGHT WITHIN ONE YEAR OF PLANTING
	LILY-TURF (<i>Liriope Muscari</i>)	2	GAL.

PLAN VIEW
SCALE: 1" = 200'

FLORIDA DEPARTMENT OF
ENVIRONMENTAL PROTECTION
JUN 21 2001
SOUTHWEST DISTRICT
TAMPA



HARTMAN & ASSOCIATES, INC.
engineers, hydrogeologists, surveyors & management consultants
201 EAST PINE STREET - SUITE 1000 - ORLANDO, FL 32801
TELEPHONE (407) 839-3955 - FAX (407) 839-3790

SID LARKIN & SON, INC.
PASCO COUNTY, FLORIDA

**ENTERPRISE RECYCLING &
DISPOSAL FACILITY
LANDSCAPE PLAN**

DATE	08/00	PER PASCO COUNTY SETBACKS	JEG	RKC	DATE	08/00	BY	DATE	PROJECT NO.
REVISIONS			REVISED	CHECKED	DATE		JEG	4/00	99-331.01
							TJL	4/00	SCALE
							RKC	4/00	1" = 200'
									C-6
									SHEET - OF -

FILE: C-6.dwg

FLORIDA DEPARTMENT OF
ENVIRONMENTAL PROTECTION
JUN 21 2001
SOUTHWEST DISTRICT
TAMPA

