

FOR CONTINUATION SEE SHEET 36

FOR CONTINUATION SEE SHEET 37

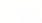

LEGEND

- GW-1 EXIST. LFG EXTRACTION WELL
- EXIST. HEADER/LATERAL
- TEMPORARY LATERAL
- EXIST. HEADER ACCESS RISER
- EXIST. HEADER VALVE
- EXIST. HEADER/LATERAL PIPE REDUCER
- EXIST. BLIND FLANGE
- EXIST. ROAD CROSSING
- EXIST. LEACHATE CLEANOUT RISER
- EXIST. J-TRAP
- 6" EXIST. HEADER/LATERAL PIPE SIZE
- XXXXXXX CAPPED AND ABANDONED PIPE/FEATURE
- HGC-1 HORIZONTAL GAS COLLECTOR
- HORIZONTAL GAS COLLECTOR WELLHEAD
- CELL LIMIT
- SEW1 EXIST. 4" PVC GAS WELL
- PROPOSED CONTROL VALVE
- PROPOSED FORCEMAIN CLEANOUT
- PROPOSED FORCEMAIN CLEANOUT, CONTROL VALVE, AIR ISOLATION VALVE, AND AIR RELEASE VALVE
- PROPOSED PHASE 3 EXTRACTION WELL
- PROPOSED PHASE 3 HGC
- PROPOSED PHASE 3 LATERAL
- PROPOSED PHASE 4 EXTRACTION WELL
- PROPOSED PHASE 4 HGC
- PROPOSED PHASE 4 LATERAL
- PROPOSED 2" AIR LINE & 2" FORCEMAIN (PHASE 3)
- PROPOSED 2" AIR LINE & 2" FORCEMAIN (PHASE 4)
- PROPOSED 2" AIR & 4" FORCEMAIN LINE
- PROPOSED 4" DEWATERING LEACHATE TRANSMISSION LINE

NOTES

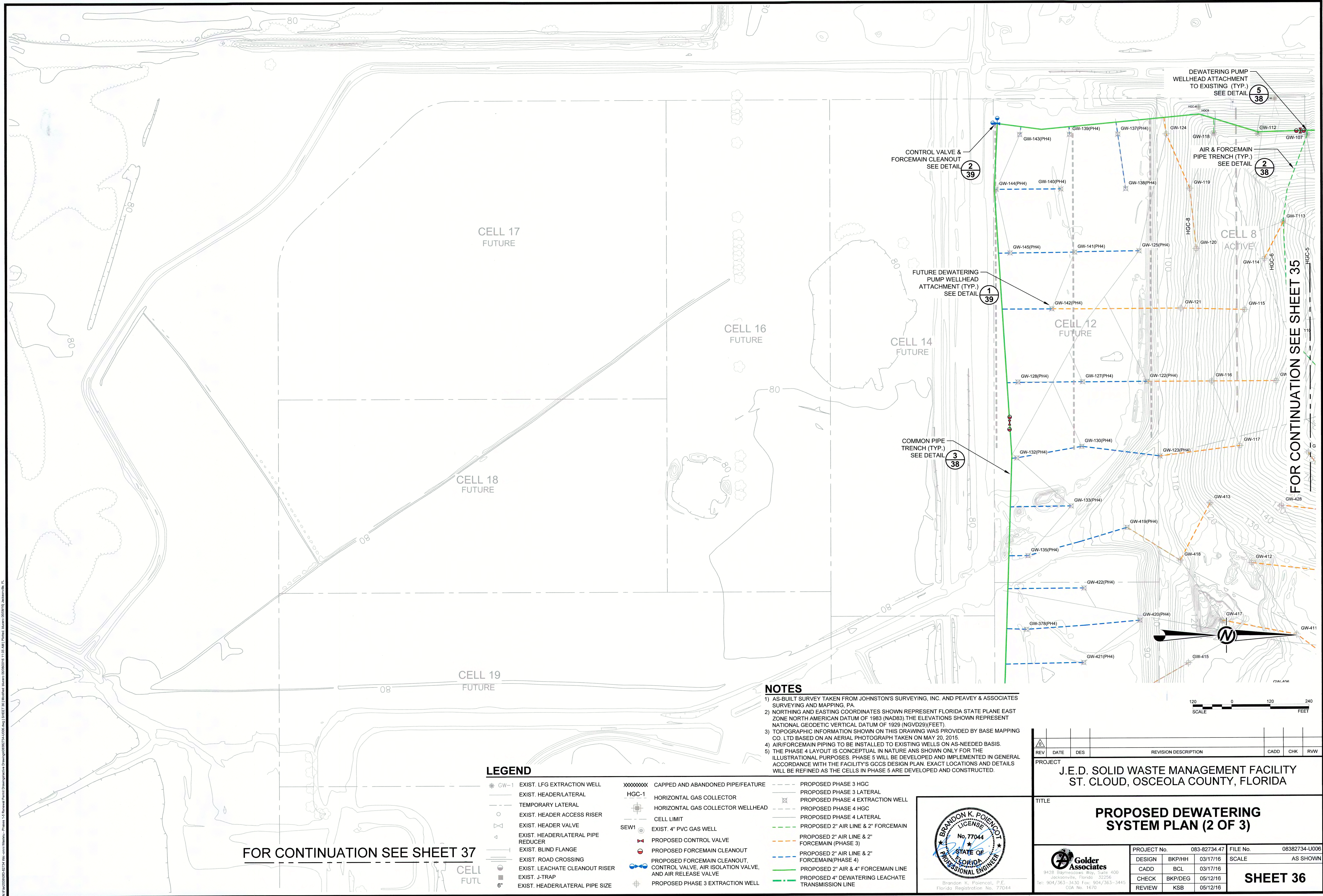
- AS-BUILT SURVEY TAKEN FROM JOHNSTON'S SURVEYING, INC. AND PEAVEY & ASSOCIATES SURVEYING AND MAPPING, PA.
- NORTHING AND EASTING COORDINATES SHOWN REPRESENT FLORIDA STATE PLANE EAST ZONE NORTH AMERICAN DATUM OF 1983 (NAD83); THE ELEVATIONS SHOWN REPRESENT NATIONAL GEODETIC VERTICAL DATUM OF 1929 (NGVD29)(FEET).
- TOPOGRAPHIC INFORMATION SHOWN ON THIS DRAWING WAS PROVIDED BY BASE MAPPING CO. LTD BASED ON AN AERIAL PHOTOGRAPH TAKEN ON MAY 20, 2015.
- AIR/FORCEMAIN PIPING TO BE INSTALLED TO EXISTING WELLS ON AS-NEEDED BASIS.
- THE PHASE 4 LAYOUT IS CONCEPTUAL IN NATURE AND SHOWN ONLY FOR THE ILLUSTRATIONAL PURPOSES. PHASE 5 WILL BE DEVELOPED AND IMPLEMENTED IN GENERAL ACCORDANCE WITH THE FACILITY'S GCCS DESIGN PLAN. EXACT LOCATIONS AND DETAILS WILL BE REFINED AS THE CELLS IN PHASE 5 ARE DEVELOPED AND CONSTRUCTED.



												
REV	DATE	DES	REVISION DESCRIPTION			CADD	CHK	RWW				
PROJECT												
J.E.D. SOLID WASTE MANAGEMENT FACILITY ST. CLOUD, OSCEOLA COUNTY, FLORIDA												
TITLE												
PROPOSED DEWATERING SYSTEM PLAN (1 OF 3)												
 Goldner Associates 9428 Baymeadows Way, Suite 400 Jacksonville, Florida 32256 Tel: 904/363-3430 Fax: 904/363-3445 COA No. 1670			PROJECT No.		083-82734.47		FILE No.		08382734-U006			
			DESIGN		BKP/JHH		03/17/16		SCALE		AS SHOWN	
			CADD		BCL		03/17/16		SHEET 35			
			CHECK		BKP/DEG		05/12/16					
			REVIEW		KSB		05/12/16					

Goldier Associates
9428 Baymeadows Way, Suite 400
Jacksonville, Florida 32256
Tel: 904/363-3430 Fax: 904/363-3445
CO# No. 1670

N:\P\2020\0505-052734-U006\0505-052734-U006.dwg [Sheet 36] Modified: 05/05/2025 11:05 AM [User: brian.00001] Jacksonville, FL



NOTES

- 1) AS-BUILT SURVEY TAKEN FROM JOHNSTON'S SURVEYING, INC. AND PEAVEY & ASSOCIATES SURVEYING AND MAPPING, PA.
- 2) NORTHING AND EASTING COORDINATES SHOWN REPRESENT FLORIDA STATE PLANE EAST ZONE NORTH AMERICAN DATUM OF 1983 (NAD83). THE ELEVATIONS SHOWN REPRESENT NATIONAL GEODETIC VERTICAL DATUM OF 1929 (NGVD29)(FEET).
- 3) TOPOGRAPHIC INFORMATION SHOWN ON THIS DRAWING WAS PROVIDED BY BASE MAPPING CO. LTD BASED ON AN AERIAL PHOTOGRAPH TAKEN ON MAY 20, 2015.
- 4) AIR/FORCEMAIN PIPING TO BE INSTALLED TO EXISTING WELLS ON AS-NEEDED BASIS.
- 5) THE PHASE 4 LAYOUT IS CONCEPTUAL IN NATURE AND SHOWN ONLY FOR THE ILLUSTRATIONAL PURPOSES. PHASE 5 WILL BE DEVELOPED AND IMPLEMENTED IN GENERAL ACCORDANCE WITH THE FACILITY'S GCS DESIGN PLAN. EXACT LOCATIONS AND DETAILS WILL BE REFINED AS THE CELLS IN PHASE 5 ARE DEVELOPED AND CONSTRUCTED.

LEGEND

- | | | | |
|------|------------------------------------|---------|--|
| GW-1 | EXIST. LFG EXTRACTION WELL | XXXXXXX | CAPPED AND ABANDONED PIPE/FEATURE |
| --- | EXIST. HEADER/LATERAL | HGC-1 | HORIZONTAL GAS COLLECTOR |
| --- | TEMPORARY LATERAL | --- | HORIZONTAL GAS COLLECTOR WELLHEAD |
| --- | EXIST. HEADER ACCESS RISER | --- | CELL LIMIT |
| --- | EXIST. HEADER VALVE | SEW1 | EXIST. 4" PVC GAS WELL |
| --- | EXIST. HEADER/LATERAL PIPE REDUCER | --- | PROPOSED CONTROL VALVE |
| --- | EXIST. BLIND FLANGE | --- | PROPOSED FORCEMAIN CLEANOUT |
| --- | EXIST. ROAD CROSSING | --- | PROPOSED FORCEMAIN CLEANOUT, CONTROL VALVE, AIR ISOLATION VALVE, AND AIR RELEASE VALVE |
| --- | EXIST. LEACHATE CLEANOUT RISER | --- | PROPOSED PHASE 3 EXTRACTION WELL |
| --- | EXIST. J-TRAP | --- | |
| --- | EXIST. HEADER/LATERAL PIPE SIZE | --- | |

- | | |
|-----|---|
| --- | PROPOSED PHASE 3 HGC |
| --- | PROPOSED PHASE 3 LATERAL |
| --- | PROPOSED PHASE 4 EXTRACTION WELL |
| --- | PROPOSED PHASE 4 HGC |
| --- | PROPOSED PHASE 4 LATERAL |
| --- | PROPOSED 2" AIR LINE & 2" FORCEMAIN (PHASE 3) |
| --- | PROPOSED 2" AIR LINE & 2" FORCEMAIN (PHASE 4) |
| --- | PROPOSED 2" AIR & 4" FORCEMAIN LINE |
| --- | PROPOSED 4" DEWATERING LEACHATE TRANSMISSION LINE |

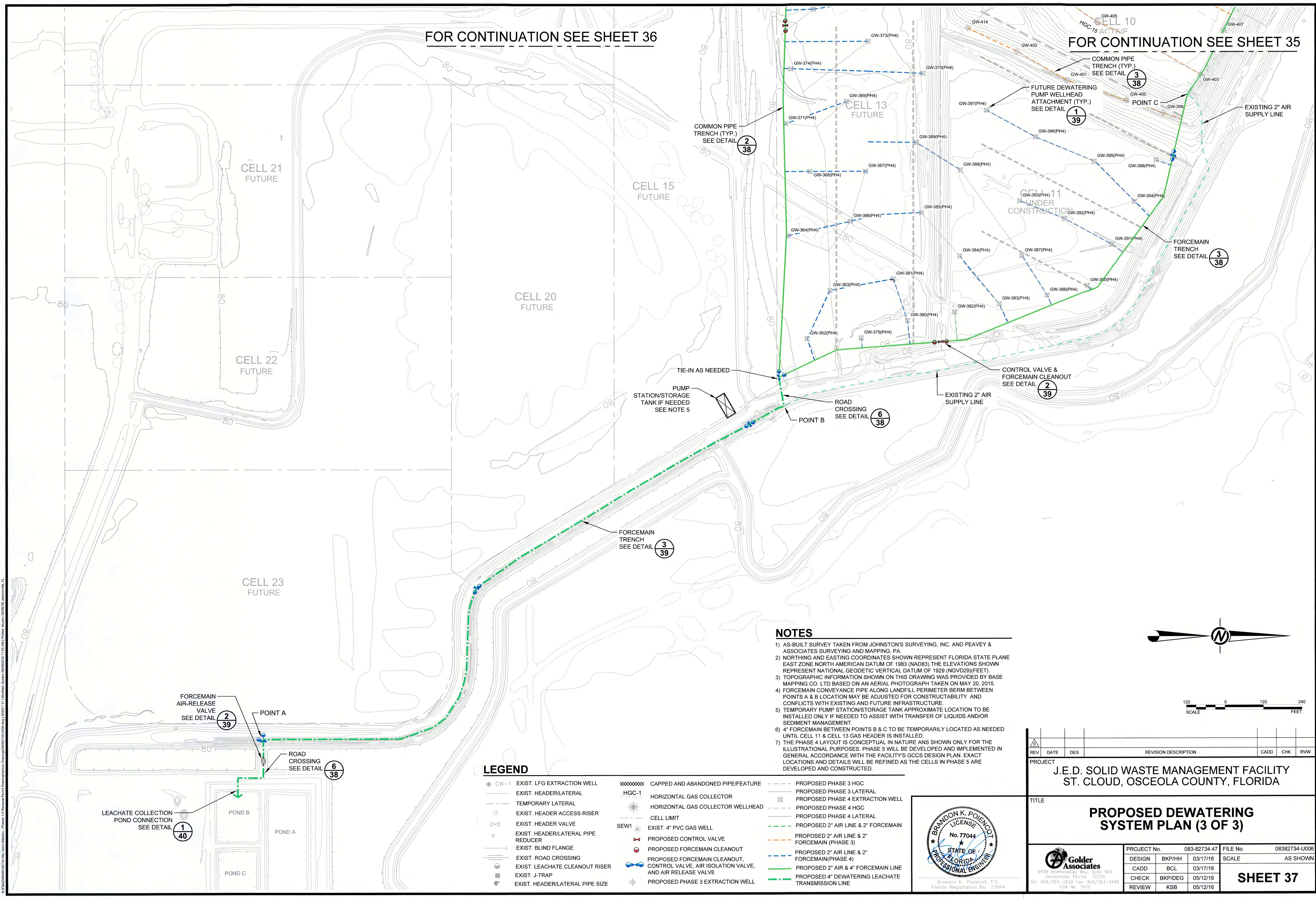


A																																																																																																																																																																																																																																																																																																																																																																																																																																																																																																																																																																																																								
---	--	--	--	--	--	--	--	--	--	--	--	--	--	--	--	--	--	--	--	--	--	--	--	--	--	--	--	--	--	--	--	--	--	--	--	--	--	--	--	--	--	--	--	--	--	--	--	--	--	--	--	--	--	--	--	--	--	--	--	--	--	--	--	--	--	--	--	--	--	--	--	--	--	--	--	--	--	--	--	--	--	--	--	--	--	--	--	--	--	--	--	--	--	--	--	--	--	--	--	--	--	--	--	--	--	--	--	--	--	--	--	--	--	--	--	--	--	--	--	--	--	--	--	--	--	--	--	--	--	--	--	--	--	--	--	--	--	--	--	--	--	--	--	--	--	--	--	--	--	--	--	--	--	--	--	--	--	--	--	--	--	--	--	--	--	--	--	--	--	--	--	--	--	--	--	--	--	--	--	--	--	--	--	--	--	--	--	--	--	--	--	--	--	--	--	--	--	--	--	--	--	--	--	--	--	--	--	--	--	--	--	--	--	--	--	--	--	--	--	--	--	--	--	--	--	--	--	--	--	--	--	--	--	--	--	--	--	--	--	--	--	--	--	--	--	--	--	--	--	--	--	--	--	--	--	--	--	--	--	--	--	--	--	--	--	--	--	--	--	--	--	--	--	--	--	--	--	--	--	--	--	--	--	--	--	--	--	--	--	--	--	--	--	--	--	--	--	--	--	--	--	--	--	--	--	--	--	--	--	--	--	--	--	--	--	--	--	--	--	--	--	--	--	--	--	--	--	--	--	--	--	--	--	--	--	--	--	--	--	--	--	--	--	--	--	--	--	--	--	--	--	--	--	--	--	--	--	--	--	--	--	--	--	--	--	--	--	--	--	--	--	--	--	--	--	--	--	--	--	--	--	--	--	--	--	--	--	--	--	--	--	--	--	--	--	--	--	--	--	--	--	--	--	--	--	--	--	--	--	--	--	--	--	--	--	--	--	--	--	--	--	--	--	--	--	--	--	--	--	--	--	--	--	--	--	--	--	--	--	--	--	--	--	--	--	--	--	--	--	--	--	--	--	--	--	--	--	--	--	--	--	--	--	--	--	--	--	--	--	--	--	--	--	--	--	--	--	--	--	--	--	--	--	--	--	--	--	--	--	--	--	--	--	--	--	--	--	--	--	--	--	--	--	--	--	--	--	--	--	--	--	--	--	--	--	--	--	--	--	--	--	--	--	--	--	--	--	--	--	--	--	--	--	--	--	--	--	--	--	--	--	--	--	--	--	--	--	--	--	--	--	--	--	--	--	--	--	--	--	--	--	--	--	--	--	--	--	--	--	--	--	--	--	--	--	--	--	--	--	--	--	--	--	--



FOR CONTINUATION SEE SHEET 36

FOR CONTINUATION SEE SHEET 35

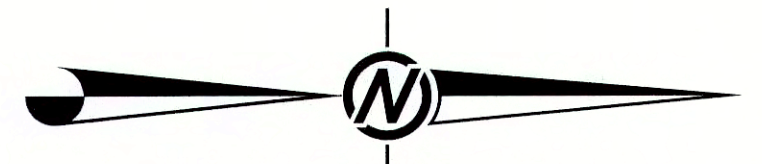


NOTES

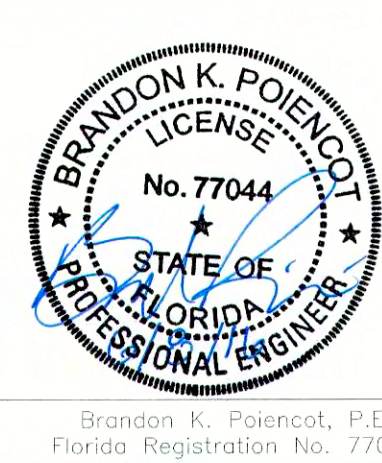
- 1) AS-BUILT SURVEY TAKEN FROM JOHNSTON'S SURVEYING, INC. AND PEAVEY & ASSOCIATES SURVEYING AND MAPPING, PA.
- 2) NORTHING AND EASTING COORDINATES SHOWN REPRESENT FLORIDA STATE PLANE EAST ZONE NORTH AMERICAN DATUM OF 1983 (NAD83). THE ELEVATIONS SHOWN REPRESENT NATIONAL GEODETIC VERTICAL DATUM OF 1929 (NGVD29) (FEET).
- 3) TOPOGRAPHIC INFORMATION SHOWN ON THIS DRAWING WAS PROVIDED BY BASE MAPPING CO. LTD BASED ON AN AERIAL PHOTOGRAPH TAKEN ON MAY 20, 2015.
- 4) FORCEMAIN CONVEYANCE PIPE ALONG LANDFILL PERIMETER BERM BETWEEN POINTS A & B LOCATION MAY BE ADJUSTED FOR CONSTRUCTABILITY AND CONFLICTS WITH EXISTING AND FUTURE INFRASTRUCTURE.
- 5) TEMPORARY PUMP STATION/STORAGE TANK APPROXIMATE LOCATION TO BE INSTALLED ONLY IF NEEDED TO ASSIST WITH TRANSFER OF LIQUIDS AND/OR SEDIMENT MANAGEMENT.
- 6) 4" FORCEMAIN BETWEEN POINTS B & C TO BE TEMPORARILY LOCATED AS NEEDED UNTIL CELL 11 & CELL 13 GAS HEADER IS INSTALLED.
- 7) THE PHASE 4 LAYOUT IS CONCEPTUAL IN NATURE AND SHOWN ONLY FOR THE ILLUSTRATIONAL PURPOSES. PHASE 5 WILL BE DEVELOPED AND IMPLEMENTED IN GENERAL ACCORDANCE WITH THE FACILITY'S GCOS DESIGN PLAN. EXACT LOCATIONS AND DETAILS WILL BE REFINED AS THE CELLS IN PHASE 5 ARE DEVELOPED AND CONSTRUCTED.

LEGEND

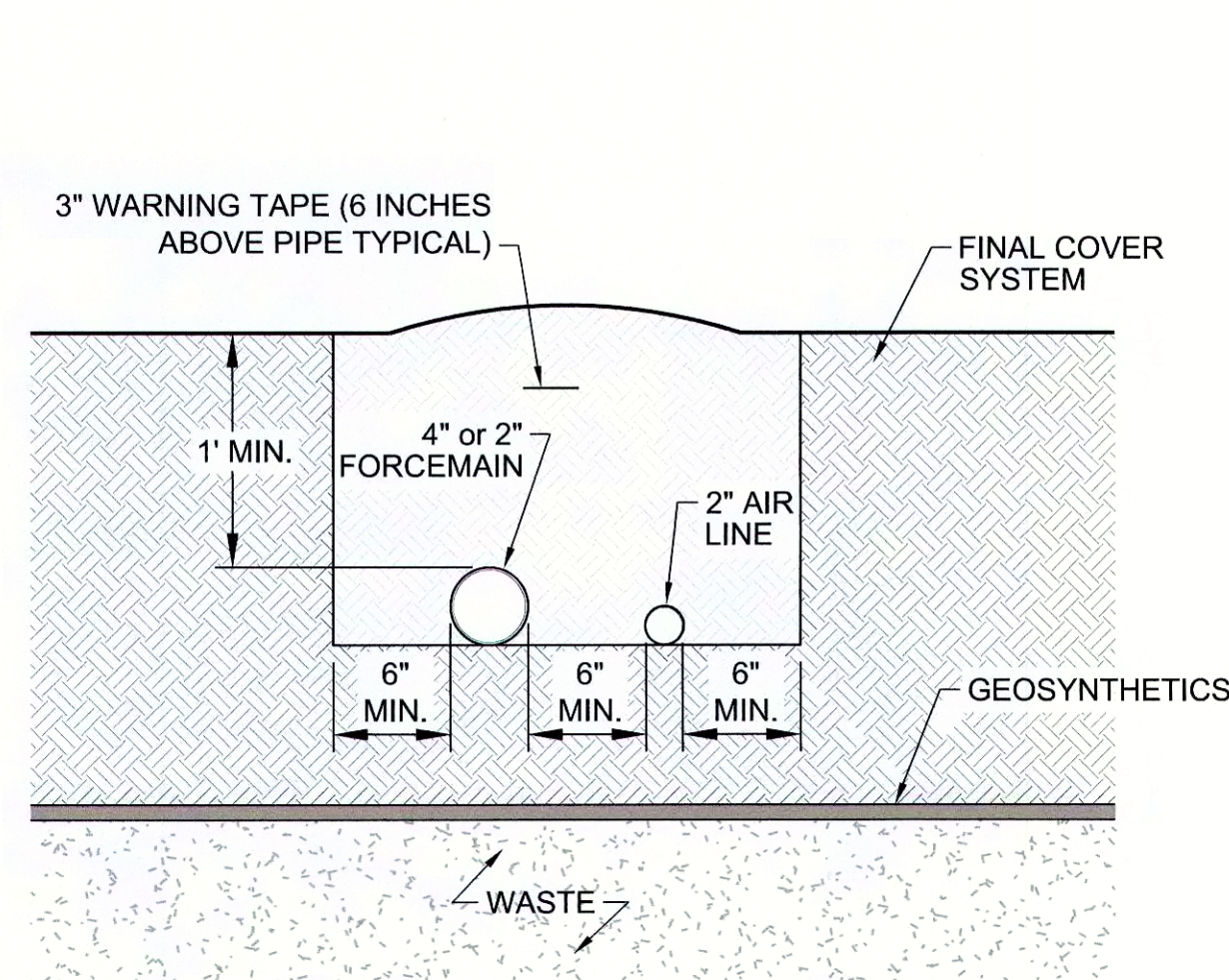
- GW-1 EXIST. LFG EXTRACTION WELL
- EXIST. HEADER/LATERAL
- TEMPORARY LATERAL
- EXIST. HEADER ACCESS RISER
- EXIST. HEADER VALVE
- EXIST. HEADER/LATERAL PIPE REDUCER
- EXIST. BLIND FLANGE
- EXIST. ROAD CROSSING
- EXIST. LEACHATE CLEANOUT RISER
- EXIST. J-TRAP
- EXIST. HEADER/LATERAL PIPE SIZE
- XXXXXXX CAPPED AND ABANDONED PIPE/FEATURE
- HGC-1 HORIZONTAL GAS COLLECTOR
- HORIZONTAL GAS COLLECTOR WELLHEAD
- CELL LIMIT
- SEW1 EXIST. 4" PVC GAS WELL
- PROPOSED CONTROL VALVE
- PROPOSED FORCEMAIN CLEANOUT
- PROPOSED FORCEMAIN CLEANOUT, CONTROL VALVE, AIR ISOLATION VALVE, AND AIR RELEASE VALVE
- PROPOSED PHASE 3 EXTRACTION WELL
- PROPOSED PHASE 3 HGC
- PROPOSED PHASE 3 LATERAL
- PROPOSED PHASE 4 EXTRACTION WELL
- PROPOSED PHASE 4 HGC
- PROPOSED PHASE 4 LATERAL
- PROPOSED 2" AIR LINE & 2" FORCEMAIN
- PROPOSED 2" AIR LINE & 2" FORCEMAIN (PHASE 3)
- PROPOSED 2" AIR LINE & 2" FORCEMAIN (PHASE 4)
- PROPOSED 2" AIR & 4" FORCEMAIN LINE
- PROPOSED 4" DEWATERING LEACHATE TRANSMISSION LINE



												
REV	DATE	DES	REVISION DESCRIPTION					CADD	CHK	RWV		
PROJECT												
J.E.D. SOLID WASTE MANAGEMENT FACILITY ST. CLOUD, OSCEOLA COUNTY, FLORIDA												
TITLE												
PROPOSED DEWATERING SYSTEM PLAN (3 OF 3)												
 9428 Boymedowns Way, Suite 400 Jacksonville, Florida 32256 Tel: 904/363-3430 Fax: 904/363-3445 COA No. 1670			PROJECT No.		083-82734.47		FILE No.		08382734-U006			
			DESIGN		BKP/HH		03/17/16		SCALE		AS SHOWN	
			CADD		BCL		03/17/16		SHEET 37			
			CHECK		BKP/DEG		05/12/16					
			REVIEW		KSB		05/12/16					



Goldier Associates
9428 Boy Meadows Way, Suite 400
Jacksonville, Florida 32256
Tel: 904/363-3430 Fax: 904/363-3445
COA No. 1670

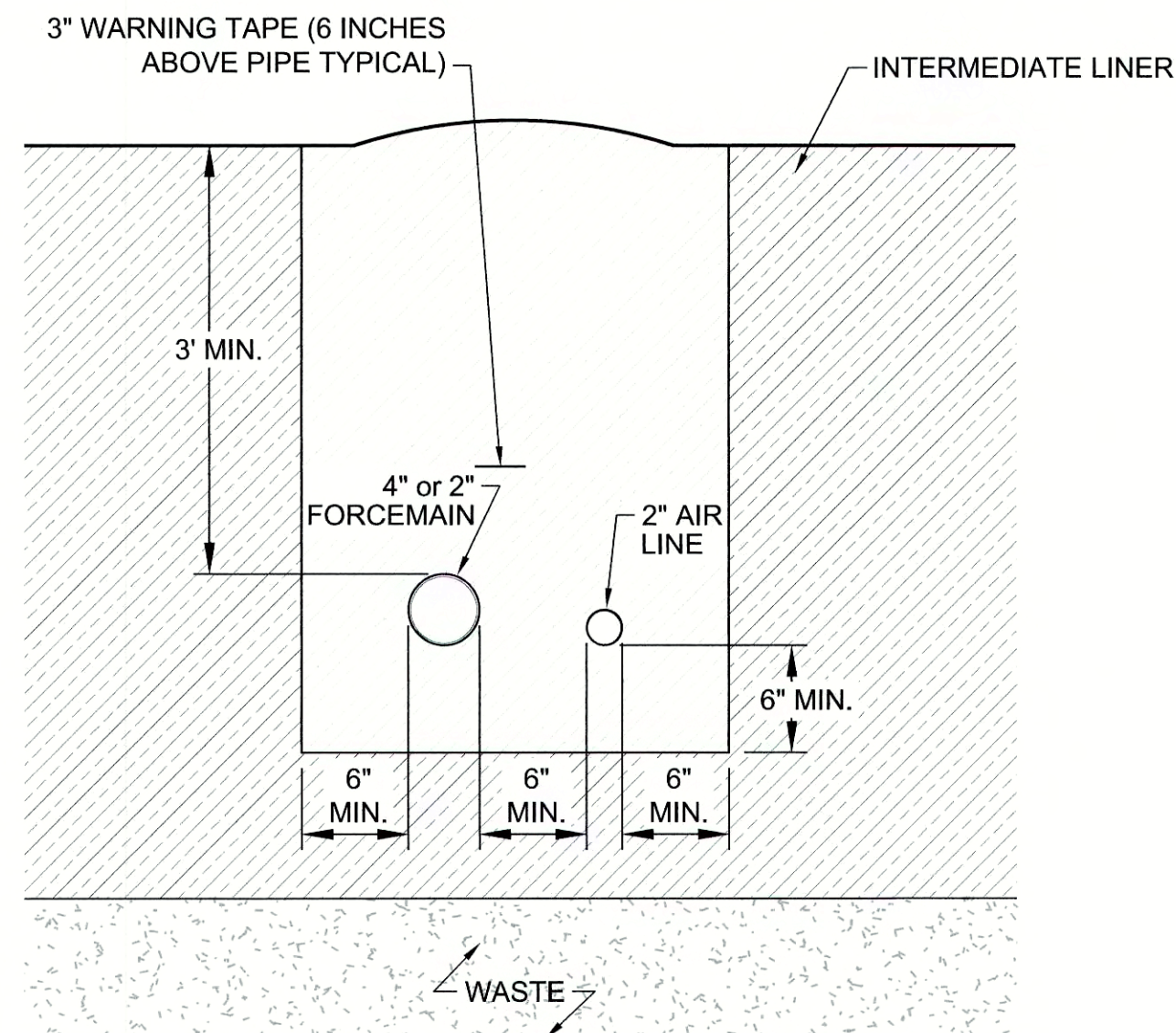


1 38

AIR & FORCEMAIN PIPE TRENCH IN CLOSURE AREA

NTS

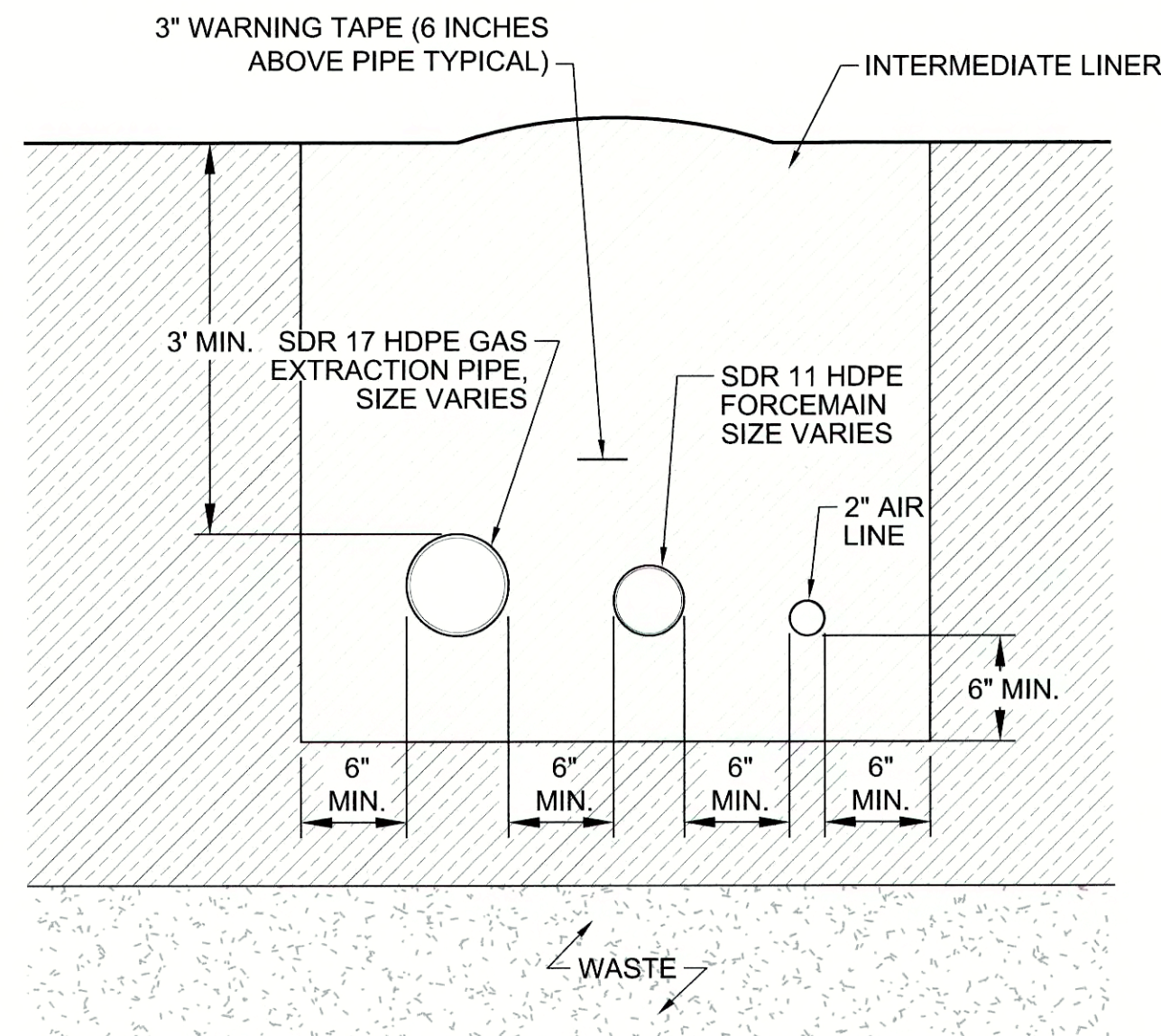
- NOTES:
1. CONNECTIONS TO EXISTING GAS EXTRACTION WELLS WILL BE COMPLETED AS DIRECTED BY OWNER.



2 38

AIR & FORCEMAIN TRENCH IN NON-CLOSED AREAS

NTS

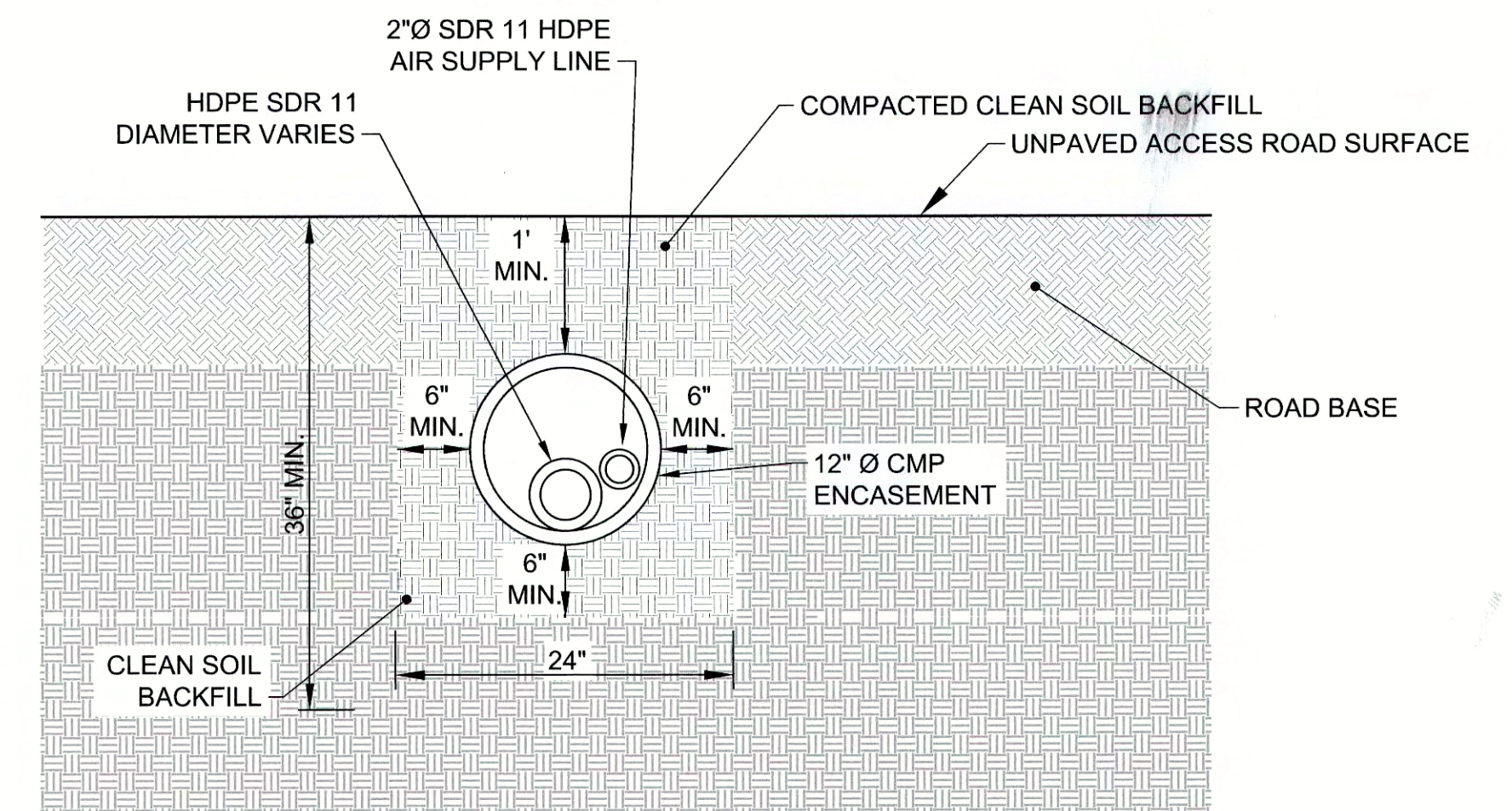


3 38

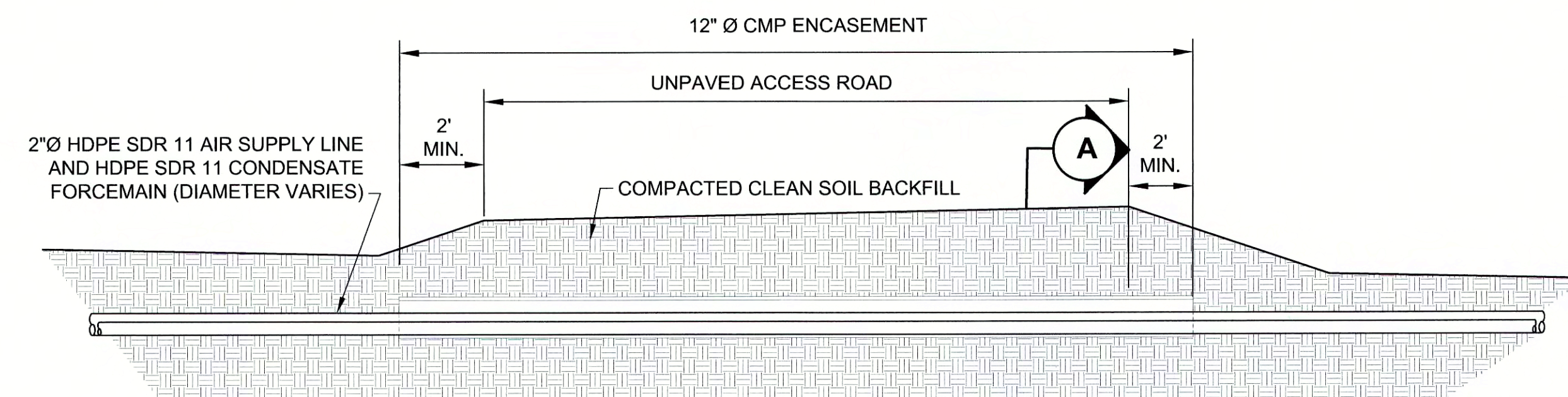
COMMON PIPE TRENCH IN EXPANSION AREAS

NTS

- NOTES:
1. DURING ALL FUTURE HEADER AND LATERAL EXPANSIONS FOR PHASES 3 & 4, AIR & FORCEMAIN LINES WILL BE INSTALLED IN A COMMON TRENCH WITH GAS EXTRACTION PIPES.
 2. RELATIVE LOCATION OF AIR/FORCEMAIN PIPING TO HEADER/LATERAL PIPES WILL BE DETERMINED AT TIME OF CONSTRUCTION.



SECTION A - A

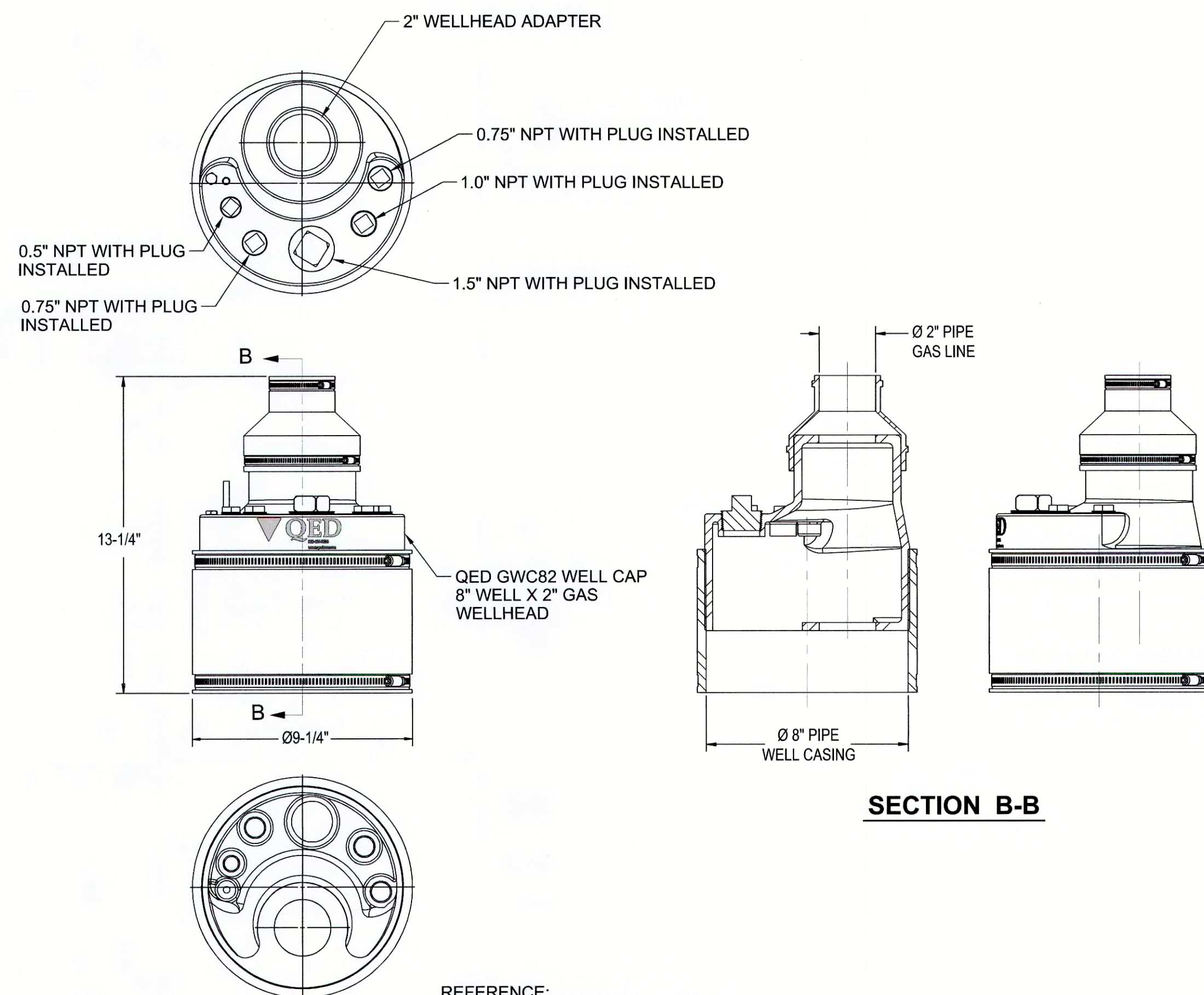


LONGITUDINAL SECTION

6 38

ROAD CROSSING

NTS



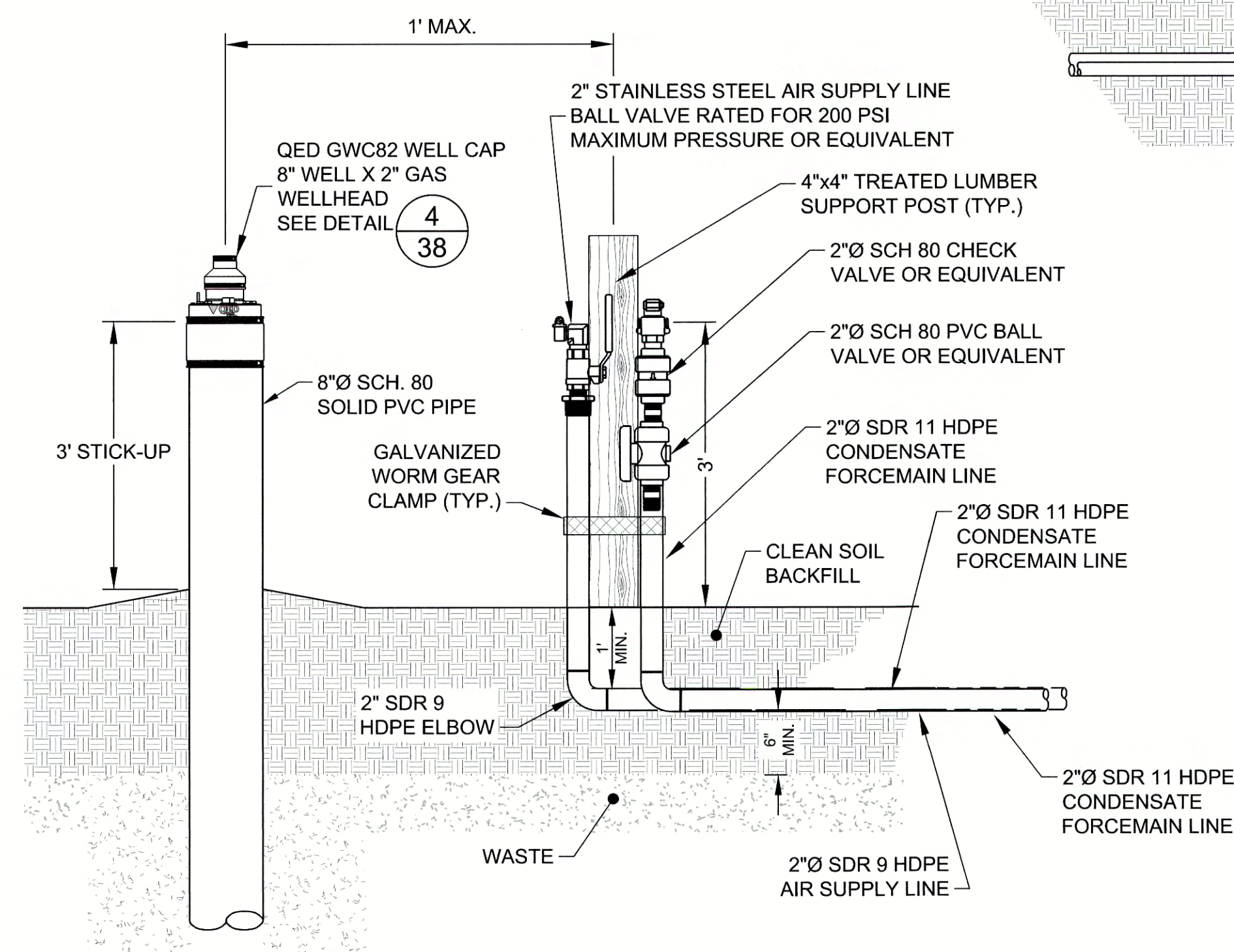
- REFERENCE:
1. QED ENVIRONMENTAL SYSTEMS DRAWINGS No. 602421 GWC82 LF GAS WELL CAP 8"x2".

4 38

DEWATERING WELL CAP ASSEMBLY

NTS

- NOTES:
1. QED 8" HIGH VISIBILITY STABILIZER WELL CAP.
 2. OTHER PUMPING WELL CAPS MAY BE UTILIZED AT OWNER'S DISCRETION. QED SHOWN FOR ILLUSTRATION ONLY.





5 38

AIR & FORCEMAIN TERMINATION DETAIL AT EXISTING WELLS

NTS

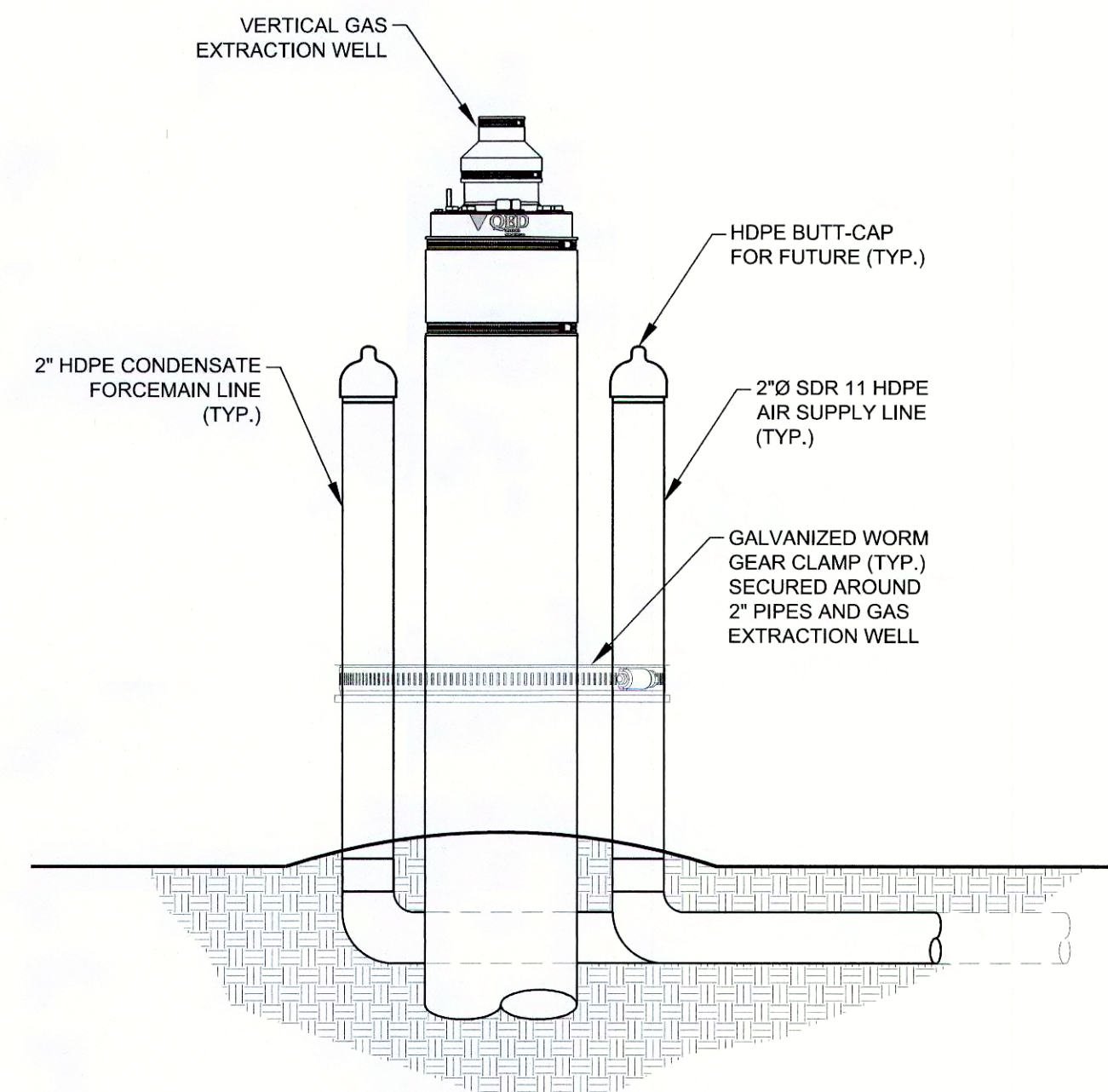
- NOTES:
1. CONNECTIONS TO EXISTING GAS EXTRACTION WELLS WILL BE COMPLETED AS DIRECTED BY OWNER.



	REV	DATE	DES	REVISION DESCRIPTION				CADD	CHK	RW																																				
PROJECT																																														
J.E.D. SOLID WASTE MANAGEMENT FACILITY ST. CLOUD, OSCEOLA COUNTY, FLORIDA																																														
TITLE																																														
DEWATERING DETAILS (1 OF 3)																																														
<div><div><div><div>Golden Associates</div><div>9428 Baymeadows Way, Suite 400 Jacksonville, Florida 32256 Tel: 904/363-3432 Fax: 904/363-3445 COA No. 1670</div></div></div><table><tr><td colspan="2">PROJECT No.</td><td colspan="2">083-82734.47</td><td colspan="2">FILE No.</td><td colspan="2">08382734-U007</td></tr><tr><td>DESIGN</td><td>BKP/HH</td><td colspan="2">03/16/16</td><td colspan="2">SCALE</td><td colspan="2">NOT TO SCALE</td></tr><tr><td>CADD</td><td>BCL</td><td colspan="2">03/17/16</td><td colspan="4"></td></tr><tr><td>CHECK</td><td>BKP/DEG</td><td colspan="2">05/12/16</td><td colspan="4" rowspan="2">SHEET 38</td></tr><tr><td>REVIEW</td><td>KSB</td><td colspan="2">05/12/16</td></tr></table></div>											PROJECT No.		083-82734.47		FILE No.		08382734-U007		DESIGN	BKP/HH	03/16/16		SCALE		NOT TO SCALE		CADD	BCL	03/17/16						CHECK	BKP/DEG	05/12/16		SHEET 38				REVIEW	KSB	05/12/16	
PROJECT No.		083-82734.47		FILE No.		08382734-U007																																								
DESIGN	BKP/HH	03/16/16		SCALE		NOT TO SCALE																																								
CADD	BCL	03/17/16																																												
CHECK	BKP/DEG	05/12/16		SHEET 38																																										
REVIEW	KSB	05/12/16																																												

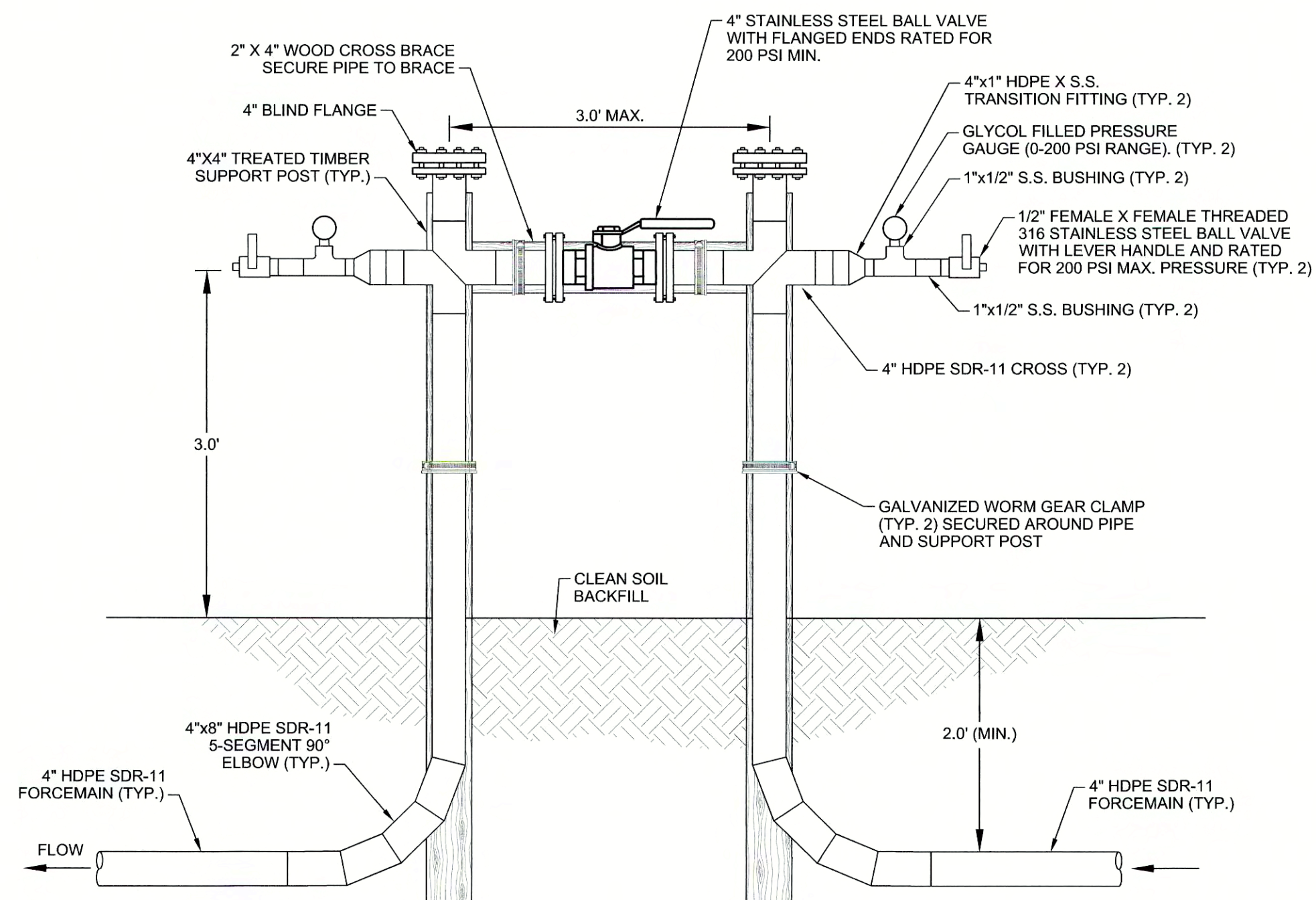


SHEET 38

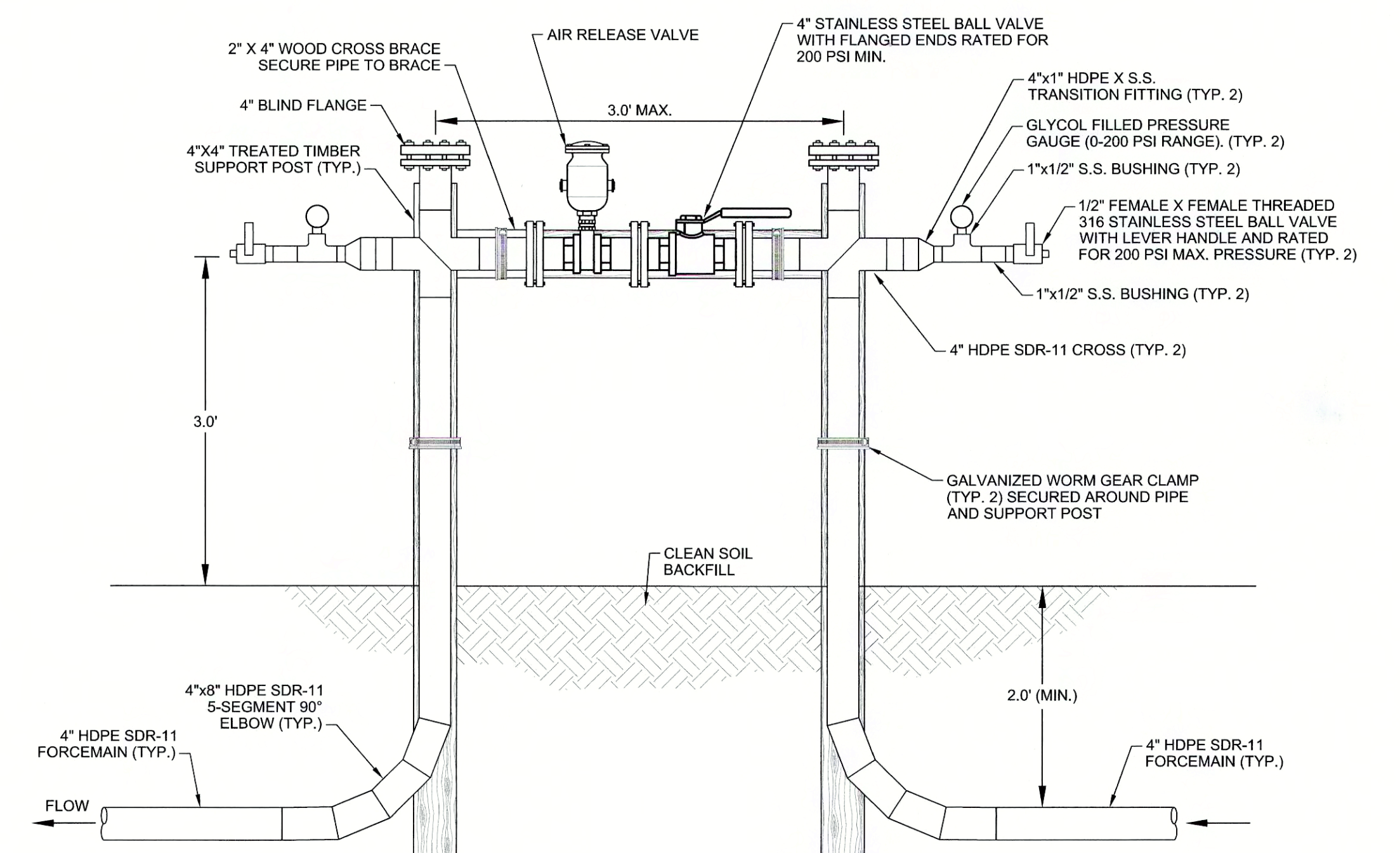


1 AIR & FORCEMAIN TERMINATION DETAIL AT FUTURE WELLS

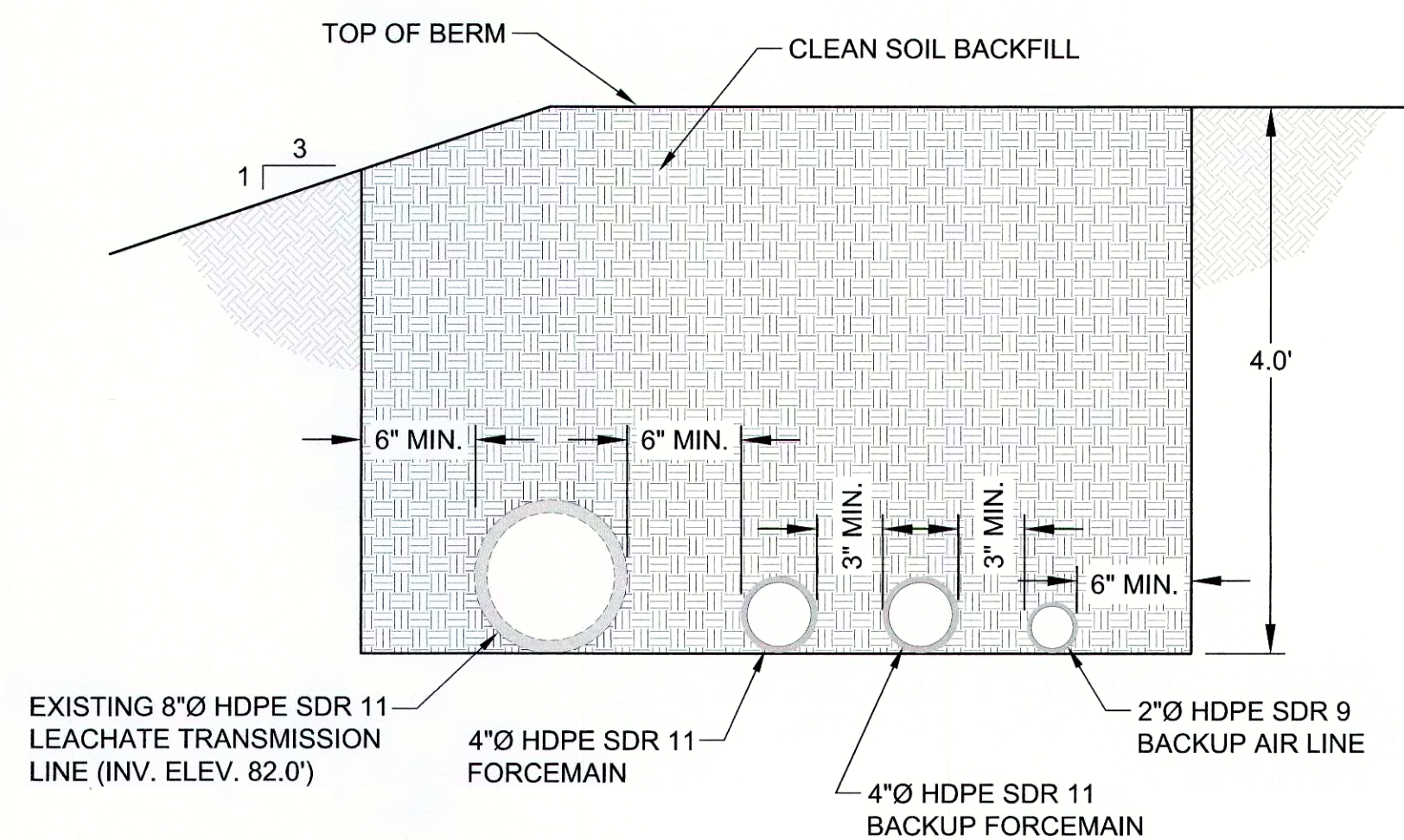
NOTE:
1. DURING ALL PHASE 3 & 4 LATERAL EXPANSIONS AIR & FORCEMAIN WILL BE INSTALLED WITH GAS EXTRACTION LATERAL PIPING AND CAPPED FOR FUTURE CONNECTION AS SHOWN ABOVE.



2 CONTROL VALVE & FORCEMAIN CLEANOUT

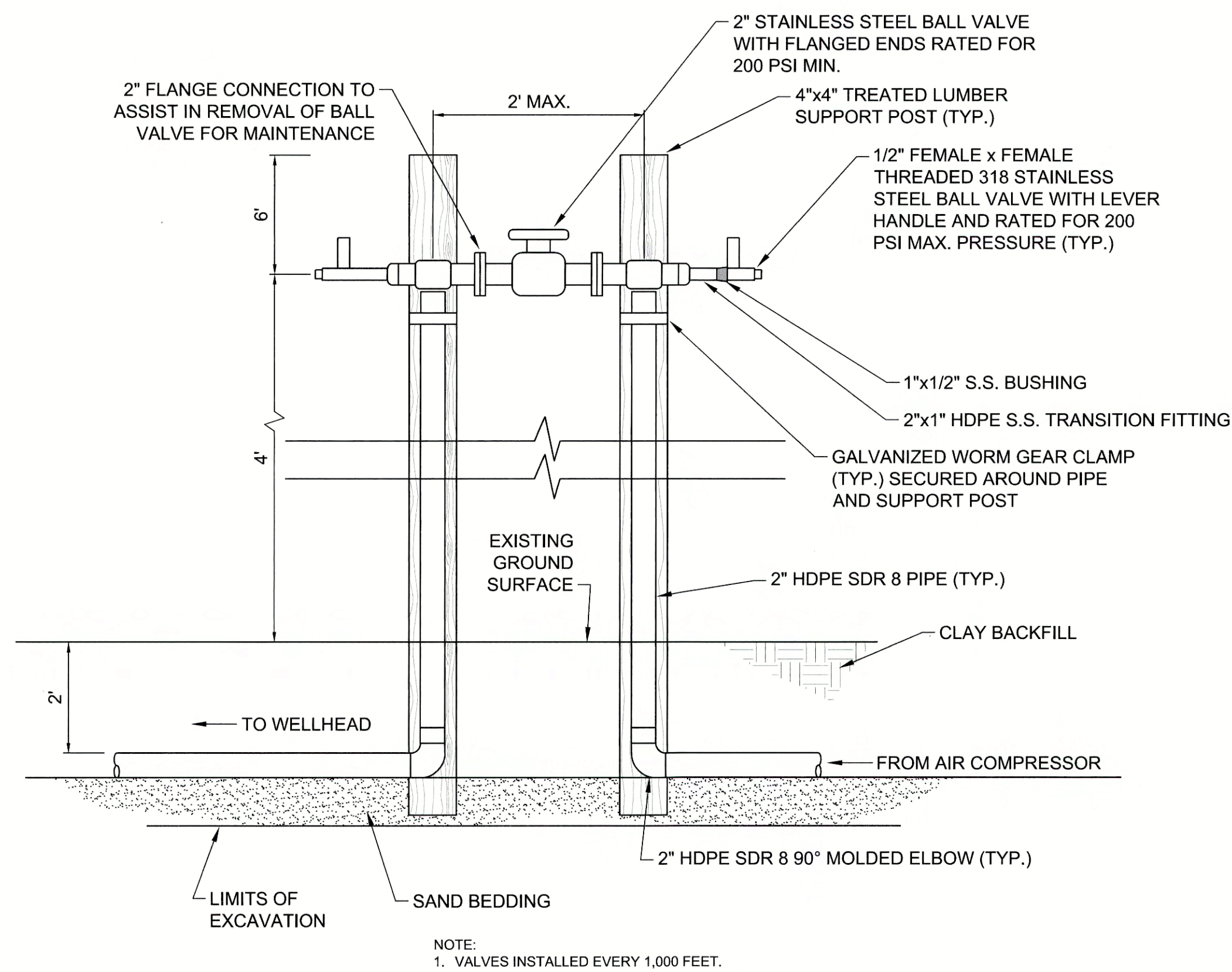


3 CONTROL VALVE, AIR RELEASE VALVE & FORCEMAIN CLEANOUT



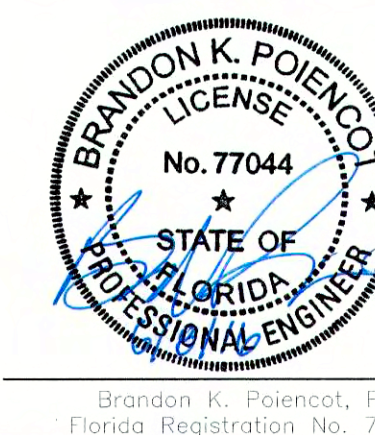
3 FORCEMAIN TRENCH DETAIL



NOTE:
1. INVERT ELEVATION OF EXISTING 8" LEACHATE TRANSMISSION LINE FROM LEACHATE STORAGE FACILITY RELOCATION RECORD DRAWINGS, BY GEOSYNTEC, DATED APRIL 2013.
2. FORCEMAIN CONVEYANCE PIPE ALONG LANDFILL PERIMETER BERM BETWEEN POINTS A & B LOCATION MAY BE ADJUSTED FOR CONSTRUCTABILITY AND CONFLICTS WITH EXISTING AND FUTURE INFRASTRUCTURE.
3. SPACING BETWEEN PIPES MAY BE ADJUSTED.

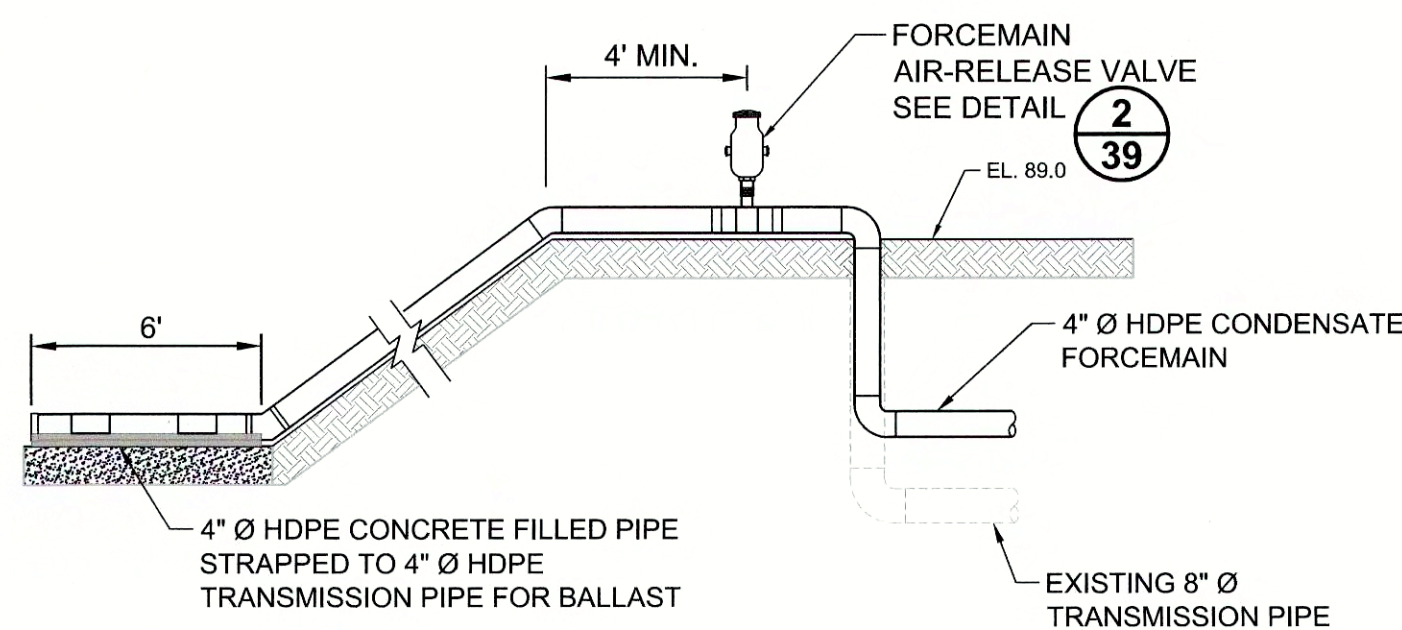


4 AIR LINE ISOLATION AND BLOWOFF VALVES DETAILS

NOTE:
1. ISOLATION & BLOWOFF VALVES INSTALLED EVERY 2,000 FEET ALONG AIR LINE.



						
REV	DATE	DES	REVISION DESCRIPTION	CADD	CHK	RWV
PROJECT						
J.E.D. SOLID WASTE MANAGEMENT FACILITY ST. CLOUD, OSCEOLA COUNTY, FLORIDA						
TITLE						
DEWATERING DETAILS (2 OF 3)						
 Golden Associates 9428 Sycamore Road, Suite 400 Jacksonville, Florida 32256 tel: 904/363-5430 fax: 904/363-3445 COA No. 1670			PROJECT No. 083-82734.47		FILE No. 08382734-U007	
DESIGN		BKP/HH	03/16/16	SCALE		NOT TO SCALE
CADD		BCL	03/17/16	SHEET 39		
CHECK		BKP/DEG	05/12/16			
REVIEW		KSB	05/12/16			




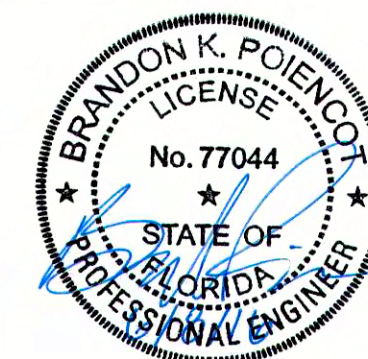
NOTE:
1. ABOVEGROUND PIPING WILL RUN
ADJACENT TO EXISTING 8" LINE

**LEACHATE COLLECTION
POND CONNECTION DETAIL**

1
40

NTS

REV	DATE	DES	REVISION DESCRIPTION	CADD	CHK	RVW
PROJECT						
J.E.D. SOLID WASTE MANAGEMENT FACILITY ST. CLOUD, OSCEOLA COUNTY, FLORIDA						
TITLE						
DEWATERING DETAILS (3 OF 3)						
 9428 Baymeadows Way, Suite 400 Jacksonville, Florida 32256 Tel: 904/363-3430 Fax: 904/363-3445 COA No. 1670		PROJECT No. 083-82734.47		FILE No. 08382734-U007		
		DESIGN	BKP	03/24/16	SCALE	
		CADD	BCL	03/28/16	NOT TO SCALE	
		CHECK	BKP/DEG	05/12/16	SHEET 40	
		REVIEW	KSB	05/12/16		



Brandon K. Polencot, P.E.
Florida Registration No. 77044