



SARASOTA COUNTY

"Dedicated to Quality Service"

May 9, 2003

Kim Ford, P.E.
Florida Department of Environmental Protection
Southwest District
3804 Coconut Palm Drive
Tampa, Florida 33619

Re: Central County Solid Waste Disposal Complex (CCSWDC)
Permit No.: SO58-299180
Quarterly Inspection

Dear Mr. Ford:

This letter is submitted as required in accordance with the April 30, 2003 quarterly inspection.

The noted ponding issues have been addressed. In particular, the large ponding area (IIB-34) has been provided with a collection basin and piping to transfer collected leachate to the designated leachate collection area at Cell No. 4. Additional grading has taken place in the yard waste site where cleared areas exist to eliminate ponding.

There appears to some confusion regarding the relationship of a noted "seep" at Cell No. 1 and the noted leachate ponding at Cell No. 3. The "seep" is approximately 30 feet higher elevation than the elevation of the Cell No. 3 leachate ponding. The water noted was storm water from a recent rain in which the landfill received 2.03" of rain.

Area noted with thin daily cover has been addressed.

A copy of the FACE (III A-18) letter from Tallahassee, dated April 18, 2003, is enclosed for your file.

Due to the rule change regarding submitted timeframe and recent discussions with you and PBS&J. I understand the 180-day timeframe could be waived for the permit renewal at the construction and demolition debris recycling facility. The renewal application is scheduled for submission August 15, 2003.

You may be assured that is our intent to comply will all aspects of the regulations, operation plan and permit conditions.

If you have any questions, please contact me directly at (941) 861-1578.

Sincerely,

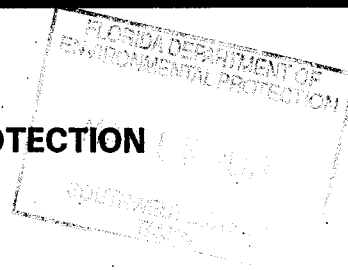
Paul A. Wingler, P.E.
Interim Solid Waste Operations Manager

Enclosures

cc: Larry Alexander, Onyx Waste Services of Florida, Inc.
Susan Pelz, P.E., FDEP - Tampa
Lora Ross, FDEP, - Tampa



FLORIDA DEPARTMENT OF ENVIRONMENTAL PROTECTION
SOLID WASTE MANAGEMENT FACILITY
INSPECTION CHECKLIST



Facility Name: Sarasota Central County Solid Waste Complex
WACS No. SWD-58-S1614 GMS I.D. Number (if available): 4058C02034
5058-249180 (CL3) 7/30/02 (CL3)
Inspection Date: 4-30-03 Permit No.: 126775-001-WT (WTF) 134912-001-WT (WTF) Expiration Date: 7/17/07 (WTF) 10/1/03 (M)
Facility Address: 4000 Knights Trail Rd
City: Nokomis County: Sarasota Zip: 34775
Permittee or Operating Authority: Sarasota County Solid Waste Department
Telephone Number (Permittee or Operating Authority): _____

Inspection Participants (Include ALL Landfill and Department Employees Specifying Titles):

Principal Inspector: Lora Ross

Other Participants: Don Shaulis; Marvin Rhoades; Larry Alexander; Tyrone Edwards

TYPE OF FACILITY (check all that apply):

Landfill:

- ☒ Class I
☐ Class II
☐ Class III

C&D Facility:

- ☐ Disposal
☐ Disposal w/Recycling
☐ Land Clearing

Waste Processing Facility:

- ☐ Transfer Station
☐ C&D Recycling
☒ Class III MRF & C&D
☐ MSW MRF
☐ Pulverizer/Shredder
☐ Compactor/Baling
☐ Other _____

Other Facilities:

- ☐ Composting
☐ WTE Facility
☐ Incinerator/Trench Burner
☐ Unauthorized Disposal
☒ Other WTF

TYPE OF INSPECTION (check all that apply):

☐ Construction Completion

☒ Operation

☐ Closure

☐ Long-Term Care

☐ Complaint Investigation

☒ Routine Inspection

☐ Reinspection

☐ Facility File Review

☐ Other _____

REQUIREMENTS:

THE REQUIREMENTS LISTED IN THIS INSPECTION CHECKLIST ARE BASED UPON RULES OF THE FLORIDA ADMINISTRATIVE CODE. A "NO" RESPONSE TO A REQUIREMENT (UNLESS OTHERWISE NOTED) REFLECTS A VIOLATION OF THE CORRESPONDING DEPARTMENT RULE(S). EACH VIOLATION IS DISCUSSED IN THE NARRATIVE SECTION OF THIS REPORT.

I. SOLID WASTE PROHIBITIONS (unless "grandfathered" in, see 62-701.300(16))	YES	NO	Unk	N/A
1. Unauthorized disposal/storage prohibited in areas lacking geological support? 62-701.300(2)(a)				
2. Unauthorized disposal/storage prohibited, except yard trash, within 500' of a potable water well? 62-701.300(2)(b)				
3. Unauthorized disposal/storage prohibited in a dewatered pit unless pit is lined and has leachate controls? 62-701.300(2)(c)				
4. Unauthorized disposal/storage prohibited in an area subject to frequent and periodic flooding unless flood protection measures in place? 62-701.300(2)(d)				
5. Unauthorized disposal/storage prohibited in any natural or artificial body of water including ground water? 62-701.300(2)(e)				

I. SOLID WASTE PROHIBITIONS (CONTINUED)		YES	NO	Unk	N/A
6.	Unauthorized disposal/storage prohibited, except yard trash, within 200' of any natural or artificial body of water, including wetlands without permanent leachate controls, except impoundments or conveyances which are part of an on-site, permitted stormwater management system or on-site water bodies with no off-site discharge? 62-701.300(2)(f)				
7.	Unauthorized disposal/storage prohibited on the right of way of any public highway, road or alley? 62-701.300(2)(g)				
8.	Unauthorized disposal/storage prohibited, except yard trash, within 1000' of a potable water well serving a community water system? 62-701.300(2)(h)				
9.	Is open burning of solid waste prohibited except in accordance with Department requirements? 62-701.300(3)				
10.	Is hazardous waste disposal prohibited? 62-701.300(4)				
11.	Is PCB disposal prohibited except in accordance with Department requirements? 62-701.300(5)				
12.	Unless specifically authorized, is the known disposal of untreated biomedical waste prohibited? 62-701.300(6)				
13.	Is lead-acid battery disposal prohibited? 62-701.300(8)(a)				
14.	Is yard trash disposal prohibited in lined landfills? 62-701.300(8)(c)				
15.	Is the disposal of white goods prohibited? 62-701.300(8)(d)				
16.	Is whole waste tire disposal prohibited except in accordance with Department requirements? 62-701.300(8)(e)				
17.	Is the known disposal of lead-acid batteries, mercury-containing devices, or spent mercury-containing lamps in waste-to-energy facilities prohibited? 62-701.300(9)				
18.	Is the facility in compliance with the liquid restrictions on disposal? 62-701.300(10)				
19.	Is the disposal of used oil or used oil mixed with wastes prohibited in landfills with the exception of: (1) oily wastes, sorbents or other materials used for maintenance or to clean up spills, leaks or accidental releases of used oil; and (2) soils contaminated with used oil from spills and accidental releases? 62-701.300(11) and 62-701.300(8)(b)				
20.	Is the unauthorized storage/disposal of yard trash prohibited within the minimum setbacks for potable water wells (except on-site), water bodies and community water supply wells? 62-701.300(12)				
21.	Is the storage of solid waste in an approved tank prohibited within 500 feet of any existing community water supply well or within 100 of any other existing potable water supply well? 62-701.300(13)				
22.	Is the facility exempted from the prohibitions because of indoor storage in an area with an impervious surface and leachate collection system? 62-701.300(14)				
23.	Is the facility exempted from the prohibitions because of storage in a vehicle that is enclosed or covered and the vehicle has been unloaded or moved over public highways within the previous seven days? 62-701.300(15)				

II. CLASS I, II & III LANDFILLS		YES	NO	Unk	N/A
A. CONSTRUCTION VERIFICATION					
1.	Subgrade or foundation adequately prepared? 62-701.400(3)(a)2				
2.	Liner construction/installation according to plans? 62-701.400(3)				
3.	Leachate collection and removal system installed according to plans? 62-701.400(4)				
4.	Disposal units constructed at planned intervals? 62-701.400(2)				
5.	Gas management system installed according to plans (if currently required)? 62-701.530(3) & (4)				
6.	Soil monitoring probes (for monitoring combustible gases) installed along property boundaries as needed? 62-701.530(2)(b)				
7.	Surface water management system construction according to plans? 62-701.400(9)				
8.	Ground water monitoring system constructed according to approved plan? 62-701.510(2)				
9.	Leachate storage constructed according to plans? 62-701.400(6)				
10.	Liner quality assurance plan followed? 62-701.400(7)				
B. OPERATION AND MAINTENANCE					
11.	Trained operator on-site at Class I and III landfills during operation? 62-701.500(1)	✓			
12.	At least one spotter at each working face during operation at Class I and III? 62-701.500(1)	✓			

H. CLASS I, II & III LANDFILLS (CONTINUED)		YES	NO	Unk	N/A
B. OPERATION AND MAINTENANCE (CONTINUED)					
13.	Is the training plan maintained and available on-site and is it being followed properly? 62-701.320(15)(a)	✓			
14.	Are training records maintained and available on-site at the facility? 62-701.320(15)(a)	✓			
15.	Approved operating plan and permit, operating and waste records maintained? 62-701.500(2), (3), (4), (8)(f), (8)(g), (13)	✓			
16.	Is the operation plan substantially complied with at all times and revised as needed? 62-701.500(2)		✓		
17.	Weighing or measuring of incoming waste? 62-701.500(4)(a)&(2)(d)	✓			
18.	Method and sequence of filling waste according to plans? 62-701.500(2)(f)	✓			
19.	Is access properly controlled to prevent unauthorized waste disposal? 62-701.500(5)	✓			
20.	Load checking program implemented? 62-701.500(6)	✓			
21.	Waste compaction as required? 62-701.500(7)(a)	✓			
22.	Working face and side grades above ground sloped no greater than 3 ft. horizontal to 1 ft. vertical rise? 62-701.500(7)(c)	✓			
23.	Is a narrow working face practiced? 62-701.500(7)(d)	✓			
24.	Are only permitted waste types disposed at facility? 62-701.340(3), 62-701.500(6)(a)&(2)(c)	✓			
25.	Is an adequate quantity of acceptable cover material available as stated in permit application? 62-701.330(3)(e)4, 62-701.530(1)(a)	✓			
26.	Frequency, amount and quality of initial cover, as required? 62-701.500(7)(e)		✓		
27.	Initial cover adequate to control birds, blowing wastes, disease vectors or fires? 62-701.500(7)(e)	✓			
28.	Frequency, amount and quality of intermediate cover, as required? 62-701.500(7)(f)	✓			
29.	Uncontrolled and unauthorized scavenging prohibited? 62-701.500(7)(h)	✓			
30.	Litter controlled and litter control devices maintained? 62-701.500(7)(i) and (11)(f)	✓			
31.	Adequate erosion control? 62-701.500(7)(j)	✓			
32.	Is leachate sampled and tested as required? 62-701.500(8)(a) & 62-510(6)(c)	✓			
33.	Leachate collection and removal system maintained and cleaned as required? 62-701.500(2)(j), 62-701.500(8)(b) & (h)	✓			
* 34.	Leachate disposed of or treated as required? 62-701.500(8)(b), (c) and (d))	✓			
35.	If leachate recirculation is practiced at the facility, is it done in accordance with Department requirements and the Operation Plan? 62-701.400(5)				✓
36.	Gas monitoring according to permit? 62-701.500(9) & 62-701.530(2)	✓			
37.	Gas controlled to not cause objectionable odors beyond the property boundary? 62-701.530(3)(b)	✓			
38.	Gas controlled to not allow combustible gas concentrations to exceed specified limits? 62-701.530(3)(a)	✓			
39.	Gas pressures not interfering with or causing failure of the liner or leachate control system? 62-701.530(1)(a)4.	✓			
40.	Gas vents intact and functioning properly? 62-701.500(9) & 62-701.530(1)(a)3.	✓			
41.	Mixing of leachate and stormwater prevented or minimized? 62-701.500(10) & 62-701.400(9)(c)	✓			
42.	Peak discharge stormwater run-on to unclosed portions of the landfill prevented as required? 62-701.500(10), 62-701.400(9)(b)	✓			
43.	Retention and/or detention ponds/ditches, culverts, berms maintained? 62-701.500(10)	✓			
44.	Sufficient operating equipment? 62-701.500(11)(a)	✓			
45.	Sufficient reserve equipment (or other arrangements)? 62-701.500(11)(b)	✓			
46.	Adequate communication facilities? 62-701.500(11)(c)	✓			
47.	Adequate approved dust control methods? 62-701.500(11)(d)	✓			
48.	Fire protection and fire fighting facilities adequate and operational? 62-701.500(11)(e)	✓			
49.	Required signs for operational directions and public information? 62-701.500(11)(g)	✓			
50.	Are all-weather access roads and inside perimeter roads properly maintained? 62-701.500(12)	✓			
51.	Ground water wells intact and functioning properly? 62-701.510(2)(b), 62-701.620(9)	✓			
52.	Water quality sampling and testing according to standard procedures and at required frequencies? 62-701.510(2)	✓			
53.	Is there proper control, management or disposal of special wastes? 62-701.520	✓			
54.	Are all specific conditions in the permit being followed? 62-701.320(1)		✓		

H. CLASS I, II & III LANDFILLS (CONTINUED)		YES	NO	Unk	N/A
C. CLOSURE					
55.	Final cover installation according to approved design plans and does the present condition and function appear adequate? 62-701.600(5)(f)(2)				
56.	Gas pressures not interfering with or causing failure of the final cover? 62-701.530(1)(a)4.				
57.	Facility meets closure requirements prohibiting unauthorized dumping? 62-701.600(5)(l)				
58.	All actions for closure completed satisfactorily according to approved closure operation plan? 62-701.600(6)				
59.	Have a final survey or an as-built report with all survey monuments and other permanent markers for waste filled areas been received ? 62-701.610(2) & (3)				
60.	Authorized use of closed landfill and integrity of environmental protection measures maintained? 62-701.610(7)				
61.	If waste is being relocated, is this performed according to the Department's requirements? 62-701.620(8)				
62.	Long term care performed adequately? 62-701.620				
63.	Financial assurance adequate? 62-701.630				
64.	Are cost estimates current and adjusted every year? 62-701.630(4)	✓		✓	

III. WASTE PROCESSING FACILITIES		YES	NO	Unk	N/A
A. OPERATION AND MAINTENANCE					
1.	Do the tipping, processing, sorting, storage and compaction areas that are in an enclosed building or covered area have ventilation systems? 62-701.710(3)(a)	✓			
2.	Are areas of the facility that are not enclosed equipped with litter control devices and visual screening? 62-701.710(3)(a)	✓			
3.	Except for C&D Recyclers, is the facility designed with a leachate control system to prevent discharge of leachate and mixing of leachate with stormwater, and to minimize the presence of standing water? 62-701.710(3)(b)	✓			
4.	If the facility is a C&D Recycler, is it designed with a leachate control system to prevent discharge of leachate and mixing of leachate with stormwater, and to minimize the presence of standing water or are all areas where waste is stored or processed covered by an approved ground water monitoring program? 62-701.710(10)(b)	✓			
5.	Is an Operation and Maintenance Manual available at the facility and is it being followed? 62-701.710(4)(a)1.	✓			
6.	Are there procedures available at the facility to handle unauthorized wastes? 62-701.710(4)(a)2.	✓			
7.	Is a Contingency Plan available at the facility which addresses operational interruptions and emergencies such as fires, explosions or natural disasters? 62-701.710(4)(a)3.	✓			
8.	Are putrescible wastes not allowed to be stored unprocessed longer than 48 hours or longer than seven days if adequate vector and odor controls are provided? 62-701.710(4)(b)	✓			
9.	Are areas where waste is stored or processed cleaned at least weekly to prevent odor and vector problems? 62-701.710(4)(b)	✓			
10.	Are all drains and leachate conveyances kept clean so that leachate flow is not impeded? 62-701.710(4)(b)	✓			
11.	Are the operating hours posted at the facility? 62-701.710(4)(c)1.	✓			
12.	Is a trained operator on duty whenever the facility is operating? 62-701.710(4)(c)1.	✓			
13.	Is at least one trained spotter on duty at all times that waste is received at the facility to inspect the incoming waste? 62-701.710(4)(c)2.	✓			
14.	Are prohibited materials removed from the waste stream and placed into appropriate containers for disposal at a permitted facility? 62-701.710(4)(c)2.	✓			
15.	Is the facility operated to control objectionable odors? 62-701.710(4)(d)	✓			
16.	Is adequate fire protection equipment available at all times? 62-701.710(4)(e)	✓			
17.	Is access to the facility controlled by fencing or other effective barriers to prevent disposal of unauthorized waste? 62-701.710(4)(f)	✓			
18.	Except for Transfer Stations, is financial assurance for the facility adequate? 62-701.710(7)(a)			✓	
19.	Except for Transfer Stations, are cost estimates current and adjusted as required? 62-701.710(7)(b)	✓			

III. WASTE PROCESSING FACILITIES (CONTINUED)		YES	NO	Unk	N/A
A. OPERATION AND MAINTENANCE (CONTINUED)					
20.	If the facility is a Transfer Station, is it exempt from providing financial assurance because it accepts primarily household waste, commercial waste or recovered materials and manages the waste on a first-in, first-out basis and stores waste for no greater than 7 days? 62-701.710(10)(a)				✓
21.	Is stormwater controlled in accordance with Department requirements? 62-701.710(8)	✓			
22.	Are adequate operational records available at the facility and maintained for at least three years? 62-701.710(9)(a)	✓			
23.	If the facility is a C&D Recycler, is an Annual Report for the recycling operation submitted to the Department by April 1 of each year? 62-701.710(9)(b)	✓			
24.	Are all specific conditions in the permit being followed? 62-701.320(1)		✓		
B. CLOSURE					
25.	Are all wastes removed or disposed of in accordance with the approved Closure Plan within 30 days of receiving the final solid waste shipment? 62-701.710(6)(c)				
26.	Are stored putrescible wastes managed in accordance with Rule 62-701.710(4)(b)? 62-701.710(6)(c)				
27.	Has closure been completed within 180 days after receiving the final solid waste shipment? 62-701.710(6)(d)				

IV. C&D DEBRIS FACILITIES		YES	NO	Unk	N/A
A. DISPOSAL					
1.	Is the facility only disposing of C&D wastes and are prohibited wastes properly managed? 62-701.730(4)(c), (6) & (7)(d)				
2.	Ground water wells intact and functioning properly? 62-701.510(2)(b), 62-701.730(4)(b)				
3.	Water quality sampling and testing according to standard procedures and at required frequency? 62-701.730(4)(b) & (10)				
4.	Is stormwater controlled in accordance with Department requirements? 62-701.730(5)				
5.	Are wastes compacted and sloped as necessary for later closure? 62-701.730(7)(b)				
6.	Is access to the facility properly controlled? 62-701.730(7)(c)				
7.	Is a trained operator on duty at the facility at all times the facility is operating and are there a sufficient number of spotters on duty at the working face to inspect the incoming wastes at all times waste is being accepted? 62-701.730(7)(d)				
8.	Are objectionable odors controlled in accordance with Department requirements? 62-701.730(7)(e)				
9.	Are fuels, solvents, lubricants, etc. safely stored in areas separate from disposal or sorting areas? 62-701.730(7)(f)				
10.	Are plastic buckets empty before disposal? 62-701.710(7)(g)				
11.	Are the spotters or operators properly trained? 62-701.730(8)				
12.	Are areas of the facility requiring final cover properly closed? 62-701.730(9)				
13.	Is financial assurance adequate? 62-701.730(11)(a)				
14.	Are cost estimates current and adjusted as required? 62-701.730(11)(b)				
15.	Are Annual Reports submitted to the Department for the disposal operation by April 1? 62-701.730(12)				
16.	If an air curtain incinerator is also used at the facility, is it properly operated? 62-701.730(14)				
17.	Is the facility operated so that adverse environmental and public health impacts, such as blowing litter and vectors, are minimized? 62-701.730(18)				
18.	Are asbestos-containing waste materials regulated pursuant to 40 CFR Part 61, Subpart M, prohibited from disposal at the facility? 62-701.730(19)				
19.	Are all specific conditions in the permit for the disposal operation being followed? 62-701.320(1)				

V. OTHER SOLID WASTE FACILITIES

1. WTE facility in compliance with all permit conditions and applicable requirements?
62-701.320(1)
2. Compost facility in compliance with all permit conditions and applicable requirements?
62-701.320(1)

YES	NO	Unk	N/A

VI. NARRATIVE

Explanation for all "NO" responses and other comments (continue on separate sheet if necessary)

II.B.16 → O&S Plan section 2.b(a) p 5-4 large ponding water noted.

II.B.26 → Initial cover had flagging noted @ daily cover

* II.B.34 → large ponding water noted on LF - possible leachate seeps on other side of standing water (had on East side of cell 3; seeps on West side of cell 2)

II.B.54 → sp. cond 6.C Yard Trash processing area had ponding water in unprocessed Ales & between windrows. sp. cond 14.d → flagging noted @ initial covering.

- UNKNOWN → II.C.63: Financial document approval has not been received by the Department from Tallahassee.

- UNKNOWN → III.A.18: same response as II.C.63

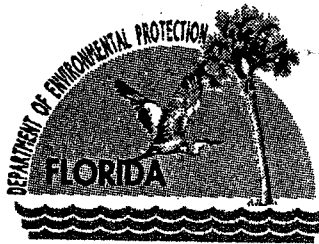
III.A.24 → Permit renewal due 4-1-03 has not been received by the Department (sp cond 4)

WTPF looked OK Financial documents are unknown from Tallahassee.

Please respond to the above deficiencies in writing to the Department within 15 days.

Signed: Lera Ross 14-30-03
DEP Representative Date

Received: Don Shaulis 7/30/03
Site Representative Date



Jeb Bush
Governor

Department of Environmental Protection

Twin Towers Office Building
2600 Blair Stone Road MS 4565
Tallahassee, Florida 32399-2400

SOLID WASTE OPERATIONS

APR 23 2003

David B. Struhs
Secretary

April 18, 2003

Mr. Peter Ramsden
Director of Finance
Sarasota County
Post Office Box 8
Sarasota, Florida 34230

Re: GMS 4058C02034 - Sarasota Central County Solid Waste Disposal Complex

Dear Mr. Ramsden:

I reviewed the fiscal year end 2002 Independent Auditor's Report submitted to demonstrate financial assurance for the above referenced facility and find it is in order. Using the "pay-in" method, the September 30, 2002 escrow balance of \$2,849,098 adequately meets the funding requirements of Rule 62-701.630(5), Florida Administrative Code (F.A.C.). Therefore, Sarasota Central County Solid Waste Disposal Complex is in compliance with the financial assurance requirements of Rule 62-701.630, F.A.C., at this time.

In future audits, please indicate balance information for closing of the landfill, materials recovery facility, and waste tire processing facility separately, to clearly demonstrate that adequate funding exists for each phase of the landfill. To ensure acceptance and approval of future escrow account audits, please direct your auditor to include this required information in the audit report.

If you have any questions, please contact me at (850) 245-8740.

Sincerely,

Chad Fetrow
Environmental Specialist
Solid Waste Section

CWF

cc: Susan Pelz, FDEP/TPA
Fred Wick, FDEP/TLH
Paul Wingler, Sarasota County



















FLORIDA DEPARTMENT OF ENVIRONMENTAL PROTECTION
SOLID WASTE MANAGEMENT FACILITY
INSPECTION CHECKLIST

MRF 202454 M
CL 1 188444 M
WTPF 181379 I

Facility Name: Sarasota Central County Solid Waste Complex
WACS No. SWD-58-51614 GMS I.D. Number (if available): 4058CO2034
5058-249180 (CL 1) 7/30/02 (CL 1)
Inspection Date: 4-30-03 Permit No.: 126775-001-WT (WTPF) 134912-001-SW (MRF) Expiration Date: 7/17/07 (WTPF) 10/1/03 (MRF)
Facility Address: 4000 Knights Trail Rd
City: Nokomis County: Sarasota Zip: 34275
Permittee or Operating Authority: Sarasota County Solid Waste Department
Telephone Number (Permittee or Operating Authority): _____

Inspection Participants (Include ALL Landfill and Department Employees Specifying Titles):

Principal Inspector: Lora Ross
Other Participants: Don Shaulis; Marvin Rhoades; Larry Alexander; Tyrone Edwards

TYPE OF FACILITY (check all that apply):

Landfill:	C&D Facility:	Waste Processing Facility:	Other Facilities:
<input checked="" type="checkbox"/> Class I	<input type="checkbox"/> Disposal	<input type="checkbox"/> Transfer Station	<input type="checkbox"/> Composting
<input type="checkbox"/> Class II	<input type="checkbox"/> Disposal w/Recycling	<input type="checkbox"/> C&D Recycling	<input type="checkbox"/> WTE Facility
<input type="checkbox"/> Class III	<input type="checkbox"/> Land Clearing	<input checked="" type="checkbox"/> Class III MRF & C&D	<input type="checkbox"/> Incinerator/Trench Burner
		<input type="checkbox"/> MSW MRF	<input type="checkbox"/> Unauthorized Disposal
		<input type="checkbox"/> Pulverizer/Shredder	<input checked="" type="checkbox"/> Other <u>WTPF</u>
		<input type="checkbox"/> Compactor/Baling	
		<input type="checkbox"/> Other _____	

TYPE OF INSPECTION (check all that apply):

<input type="checkbox"/> Construction Completion	<input type="checkbox"/> Complaint Investigation	<input type="checkbox"/> Other _____
<input checked="" type="checkbox"/> Operation	<input checked="" type="checkbox"/> Routine Inspection	
<input type="checkbox"/> Closure	<input type="checkbox"/> Reinspection	
<input type="checkbox"/> Long-Term Care	<input type="checkbox"/> Facility File Review	

REQUIREMENTS:

THE REQUIREMENTS LISTED IN THIS INSPECTION CHECKLIST ARE BASED UPON RULES OF THE FLORIDA ADMINISTRATIVE CODE. A "NO" RESPONSE TO A REQUIREMENT (UNLESS OTHERWISE NOTED) REFLECTS A VIOLATION OF THE CORRESPONDING DEPARTMENT RULE(S). EACH VIOLATION IS DISCUSSED IN THE NARRATIVE SECTION OF THIS REPORT.

I. SOLID WASTE PROHIBITIONS (unless "grandfathered" in, see 62-701.300(16))	YES	NO	Unk	N/A
1. Unauthorized disposal/storage prohibited in areas lacking geological support? 62-701.300(2)(a)				
2. Unauthorized disposal/storage prohibited, except yard trash, within 500' of a potable water well? 62-701.300(2)(b)				
3. Unauthorized disposal/storage prohibited in a dewatered pit unless pit is lined and has leachate controls? 62-701.300(2)(c)				
4. Unauthorized disposal/storage prohibited in an area subject to frequent and periodic flooding unless flood protection measures in place? 62-701.300(2)(d)				
5. Unauthorized disposal/storage prohibited in any natural or artificial body of water including ground water? 62-701.300(2)(e)				

I. SOLID WASTE PROHIBITIONS (CONTINUED)		YES	NO	Unk	N/A
6.	Unauthorized disposal/storage prohibited, except yard trash, within 200' of any natural or artificial body of water, including wetlands without permanent leachate controls, except impoundments or conveyances which are part of an on-site, permitted stormwater management system or on-site water bodies with no off-site discharge? 62-701.300(2)(f)				
7.	Unauthorized disposal/storage prohibited on the right of way of any public highway, road or alley? 62-701.300(2)(g)				
8.	Unauthorized disposal/storage prohibited, except yard trash, within 1000' of a potable water well serving a community water system? 62-701.300(2)(h)				
9.	Is open burning of solid waste prohibited except in accordance with Department requirements? 62-701.300(3)				
10.	Is hazardous waste disposal prohibited? 62-701.300(4)				
11.	Is PCB disposal prohibited except in accordance with Department requirements? 62-701.300(5)				
12.	Unless specifically authorized, is the known disposal of untreated biomedical waste prohibited? 62-701.300(6)				
13.	Is lead-acid battery disposal prohibited? 62-701.300(8)(a)				
14.	Is yard trash disposal prohibited in lined landfills? 62-701.300(8)(c)				
15.	Is the disposal of white goods prohibited? 62-701.300(8)(d)				
16.	Is whole waste tire disposal prohibited except in accordance with Department requirements? 62-701.300(8)(e)				
17.	Is the known disposal of lead-acid batteries, mercury-containing devices, or spent mercury-containing lamps in waste-to-energy facilities prohibited? 62-701.300(9)				
18.	Is the facility in compliance with the liquid restrictions on disposal? 62-701.300(10)				
19.	Is the disposal of used oil or used oil mixed with wastes prohibited in landfills with the exception of: (1) oily wastes, sorbents or other materials used for maintenance or to clean up spills, leaks or accidental releases of used oil; and (2) soils contaminated with used oil from spills and accidental releases? 62-701.300(11) and 62-701.300(8)(b)				
20.	Is the unauthorized storage/disposal of yard trash prohibited within the minimum setbacks for potable water wells (except on-site), water bodies and community water supply wells? 62-701.300(12)				
21.	Is the storage of solid waste in an approved tank prohibited within 500 feet of any existing community water supply well or within 100 of any other existing potable water supply well? 62-701.300(13)				
22.	Is the facility exempted from the prohibitions because of indoor storage in an area with an impervious surface and leachate collection system? 62-701.300(14)				
23.	Is the facility exempted from the prohibitions because of storage in a vehicle that is enclosed or covered and the vehicle has been unloaded or moved over public highways within the previous seven days? 62-701.300(15)				

II. CLASS I, II & III LANDFILLS		YES	NO	Unk	N/A
A. CONSTRUCTION VERIFICATION					
1.	Subgrade or foundation adequately prepared? 62-701.400(3)(a)2				
2.	Liner construction/installation according to plans? 62-701.400(3)				
3.	Leachate collection and removal system installed according to plans? 62-701.400(4)				
4.	Disposal units constructed at planned intervals? 62-701.400(2)				
5.	Gas management system installed according to plans (if currently required)? 62-701.530(3) & (4)				
6.	Soil monitoring probes (for monitoring combustible gases) installed along property boundaries as needed? 62-701.530(2)(b)				
7.	Surface water management system construction according to plans? 62-701.400(9)				
8.	Ground water monitoring system constructed according to approved plan? 62-701.510(2)				
9.	Leachate storage constructed according to plans? 62-701.400(6)				
10.	Liner quality assurance plan followed? 62-701.400(7)				
B. OPERATION AND MAINTENANCE					
11.	Trained operator on-site at Class I and III landfills during operation? 62-701.500(1)	✓			
12.	At least one spotter at each working face during operation at Class I and III ? 62-701.500(1)	✓			

II. CLASS I, II & III LANDFILLS (CONTINUED)					YES	NO	Unk	N/A
B. OPERATION AND MAINTENANCE (CONTINUED)								
13.	Is the training plan maintained and available on-site and is it being followed properly? 62-701.320(15)(a)				✓			
14.	Are training records maintained and available on-site at the facility? 62-701.320(15)(a)				✓			
15.	Approved operating plan and permit, operating and waste records maintained? 62-701.500(2), (3), (4), (8)(f), (8)(g), (13)				✓			
16.	Is the operation plan substantially complied with at all times and revised as needed? 62-701.500(2)					✓		
17.	Weighing or measuring of incoming waste? 62-701.500(4)(a)&(2)(d)				✓			
18.	Method and sequence of filling waste according to plans? 62-701.500(2)(f)				✓			
19.	Is access properly controlled to prevent unauthorized waste disposal? 62-701.500(5)				✓			
20.	Load checking program implemented? 62-701.500(6)				✓			
21.	Waste compaction as required? 62-701.500(7)(a)				✓			
22.	Working face and side grades above ground sloped no greater than 3 ft. horizontal to 1 ft. vertical rise? 62-701.500(7)(c)				✓			
23.	Is a narrow working face practiced? 62-701.500(7)(d)				✓			
24.	Are only permitted waste types disposed at facility? 62-701.340(3), 62-701.500(6)(a)&(2)(c)				✓			
25.	Is an adequate quantity of acceptable cover material available as stated in permit application? 62-701.330(3)(e)4, 62-701.530(1)(a)				✓			
26.	Frequency, amount and quality of initial cover, as required? 62-701.500(7)(e)					✓		
27.	Initial cover adequate to control birds, blowing wastes, disease vectors or fires? 62-701.500(7)(e)				✓			
28.	Frequency, amount and quality of intermediate cover, as required? 62-701.500(7)(f)				✓			
29.	Uncontrolled and unauthorized scavenging prohibited? 62-701.500(7)(h)				✓			
30.	Litter controlled and litter control devices maintained? 62-701.500(7)(i) and (11)(f)				✓			
31.	Adequate erosion control? 62-701.500(7)(j)				✓			
32.	Is leachate sampled and tested as required? 62-701.500(8)(a) & 62-510(6)(c)				✓			
33.	Leachate collection and removal system maintained and cleaned as required? 62-701.500(2)(j), 62-701.500(8)(b) & (h)				✓			
* 34.	Leachate disposed of or treated as required? 62-701.500(8)(b), (c) and (d)				✓			
35.	If leachate recirculation is practiced at the facility, is it done in accordance with Department requirements and the Operation Plan? 62-701.400(5)							✓
36.	Gas monitoring according to permit? 62-701.500(9) & 62-701.530(2)				✓			
37.	Gas controlled to not cause objectionable odors beyond the property boundary? 62-701.530(3)(b)				✓			
38.	Gas controlled to not allow combustible gas concentrations to exceed specified limits? 62-701.530(3)(a)				✓			
39.	Gas pressures not interfering with or causing failure of the liner or leachate control system? 62-701.530(1)(a)4.				✓			
40.	Gas vents intact and functioning properly? 62-701.500(9) & 62-701.530(1)(a)3.				✓			
41.	Mixing of leachate and stormwater prevented or minimized? 62-701.500(10) & 62-701.400(9)(c)				✓			
42.	Peak discharge stormwater run-on to unclosed portions of the landfill prevented as required? 62-701.500(10), 62-701.400(9)(b)				✓			
43.	Retention and/or detention ponds/ditches, culverts, berms maintained? 62-701.500(10)				✓			
44.	Sufficient operating equipment? 62-701.500(11)(a)				✓			
45.	Sufficient reserve equipment (or other arrangements)? 62-701.500(11)(b)				✓			
46.	Adequate communication facilities? 62-701.500(11)(c)				✓			
47.	Adequate approved dust control methods? 62-701.500(11)(d)				✓			
48.	Fire protection and fire fighting facilities adequate and operational? 62-701.500(11)(e)				✓			
49.	Required signs for operational directions and public information? 62-701.500(11)(g)				✓			
50.	Are all-weather access roads and inside perimeter roads properly maintained? 62-701.500(12)				✓			
51.	Ground water wells intact and functioning properly? 62-701.510(2)(b), 62-701.620(9)				✓			
52.	Water quality sampling and testing according to standard procedures and at required frequencies? 62-701.510(2)				✓			
53.	Is there proper control, management or disposal of special wastes? 62-701.520				✓			
54.	Are all specific conditions in the permit being followed? 62-701.320(1)					✓		

II. CLASS I, II & III LANDFILLS (CONTINUED)					YES	NO	Unk	N/A
C. CLOSURE								
55.	Final cover installation according to approved design plans and does the present condition and function appear adequate? 62-701.600(5)(f)(2)							
56.	Gas pressures not interfering with or causing failure of the final cover? 62-701.530(1)(a)4.							
57.	Facility meets closure requirements prohibiting unauthorized dumping? 62-701.600(5)(l)							
58.	All actions for closure completed satisfactorily according to approved closure operation plan? 62-701.600(6)							
59.	Have a final survey or an as-built report with all survey monuments and other permanent markers for waste filled areas been received ? 62-701.610(2) & (3)							
60.	Authorized use of closed landfill and integrity of environmental protection measures maintained? 62-701.610(7)							
61.	If waste is being relocated, is this performed according to the Department's requirements? 62-701.620(8)							
62.	Long term care performed adequately? 62-701.620							
63.	Financial assurance adequate? 62-701.630							
64.	Are cost estimates current and adjusted every year? 62-701.630(4)				✓		✓	

III. WASTE PROCESSING FACILITIES					YES	NO	Unk	N/A
A. OPERATION AND MAINTENANCE								
1.	Do the tipping, processing, sorting, storage and compaction areas that are in an enclosed building or covered area have ventilation systems? 62-701.710(3)(a)				✓			
2.	Are areas of the facility that are not enclosed equipped with litter control devices and visual screening? 62-701.710(3)(a)				✓			
3.	Except for C&D Recyclers, is the facility designed with a leachate control system to prevent discharge of leachate and mixing of leachate with stormwater, and to minimize the presence of standing water? 62-701.710(3)(b)				✓			
4.	If the facility is a C&D Recycler, is it designed with a leachate control system to prevent discharge of leachate and mixing of leachate with stormwater, and to minimize the presence of standing water or are all areas where waste is stored or processed covered by an approved ground water monitoring program? 62-701.710(10)(b)				✓			
5.	Is an Operation and Maintenance Manual available at the facility and is it being followed? 62-701.710(4)(a)1.				✓			
6.	Are there procedures available at the facility to handle unauthorized wastes? 62-701.710(4)(a)2.				✓			
7.	Is a Contingency Plan available at the facility which addresses operational interruptions and emergencies such as fires, explosions or natural disasters? 62-701.710(4)(a)3.				✓			
8.	Are putrescible wastes not allowed to be stored unprocessed longer than 48 hours or longer than seven days if adequate vector and odor controls are provided? 62-701.710(4)(b)				✓			
9.	Are areas where waste is stored or processed cleaned at least weekly to prevent odor and vector problems? 62-701.710(4)(b)				✓			
10.	Are all drains and leachate conveyances kept clean so that leachate flow is not impeded? 62-701.710(4)(b)				✓			
11.	Are the operating hours posted at the facility? 62-701.710(4)(c)1.				✓			
12.	Is a trained operator on duty whenever the facility is operating? 62-701.710(4)(c)1.				✓			
13.	Is at least one trained spotter on duty at all times that waste is received at the facility to inspect the incoming waste? 62-701.710(4)(c)2.				✓			
14.	Are prohibited materials removed from the waste stream and placed into appropriate containers for disposal at a permitted facility? 62-701.710(4)(c)2.				✓			
15.	Is the facility operated to control objectionable odors? 62-701.710(4)(d)				✓			
16.	Is adequate fire protection equipment available at all times? 62-701.710(4)(e)				✓			
17.	Is access to the facility controlled by fencing or other effective barriers to prevent disposal of unauthorized waste? 62-701.710(4)(f)				✓			
18.	Except for Transfer Stations, is financial assurance for the facility adequate? 62-701.710(7)(a)						✓	
19.	Except for Transfer Stations, are cost estimates current and adjusted as required? 62-701.710(7)(b)				✓			

III. WASTE PROCESSING FACILITIES (CONTINUED)		YES	NO	Unk	N/A
A. OPERATION AND MAINTENANCE (CONTINUED)					
20.	If the facility is a Transfer Station, is it exempt from providing financial assurance because it accepts primarily household waste, commercial waste or recovered materials and manages the waste on a first-in, first-out basis and stores waste for no greater than 7 days? 62-701.710(10)(a)				✓
21.	Is stormwater controlled in accordance with Department requirements? 62-701.710(8)	✓			
22.	Are adequate operational records available at the facility and maintained for at least three years? 62-701.710(9)(a)	✓			
23.	If the facility is a C&D Recycler, is an Annual Report for the recycling operation submitted to the Department by April 1 of each year? 62-701.710(9)(b)	✓			
24.	Are all specific conditions in the permit being followed? 62-701.320(1)		✓		
B. CLOSURE					
25.	Are all wastes removed or disposed of in accordance with the approved Closure Plan within 30 days of receiving the final solid waste shipment? 62-701.710(6)(c)				
26.	Are stored putrescible wastes managed in accordance with Rule 62-701.710(4)(b)? 62-701.710(6)(c)				
27.	Has closure been completed within 180 days after receiving the final solid waste shipment? 62-701.710(6)(d)				

IV. C&D DEBRIS FACILITIES		YES	NO	Unk	N/A
A. DISPOSAL					
1.	Is the facility only disposing of C&D wastes and are prohibited wastes properly managed? 62-701.730(4)(c), (6) & (7)(d)				
2.	Ground water wells intact and functioning properly? 62-701.510(2)(b), 62-701.730(4)(b)				
3.	Water quality sampling and testing according to standard procedures and at required frequency? 62-701.730(4)(b) & (10)				
4.	Is stormwater controlled in accordance with Department requirements? 62-701.730(5)				
5.	Are wastes compacted and sloped as necessary for later closure? 62-701.730(7)(b)				
6.	Is access to the facility properly controlled? 62-701.730(7)(c)				
7.	Is a trained operator on duty at the facility at all times the facility is operating and are there a sufficient number of spotters on duty at the working face to inspect the incoming wastes at all times waste is being accepted? 62-701.730(7)(d)				
8.	Are objectionable odors controlled in accordance with Department requirements? 62-701.730(7)(e)				
9.	Are fuels, solvents, lubricants, etc. safely stored in areas separate from disposal or sorting areas? 62-701.730(7)(f)				
10.	Are plastic buckets empty before disposal? 62-701.710(7)(g)				
11.	Are the spotters or operators properly trained? 62-701.730(8)				
12.	Are areas of the facility requiring final cover properly closed? 62-701.730(9)				
13.	Is financial assurance adequate? 62-701.730(11)(a)				
14.	Are cost estimates current and adjusted as required? 62-701.730(11)(b)				
15.	Are Annual Reports submitted to the Department for the disposal operation by April 1? 62-701.730(12)				
16.	If an air curtain incinerator is also used at the facility, is it properly operated? 62-701.730(14)				
17.	Is the facility operated so that adverse environmental and public health impacts, such as blowing litter and vectors, are minimized? 62-701.730(18)				
18.	Are asbestos-containing waste materials regulated pursuant to 40 CFR Part 61, Subpart M, prohibited from disposal at the facility? 62-701.730(19)				
19.	Are all specific conditions in the permit for the disposal operation being followed? 62-701.320(1)				

V. OTHER SOLID WASTE FACILITIES

1. WTE facility in compliance with all permit conditions and applicable requirements?
62-701.320(1)
2. Compost facility in compliance with all permit conditions and applicable requirements?
62-701.320(1)

YES	NO	Unk	N/A

VI. NARRATIVE

Explanation for all "NO" responses and other comments (continue on separate sheet if necessary)

II.B.16 → OPS Plan section 2.0(a) p 5-4 large ponding water noted.

II.B.26 → Initial cover had flagging noted @ daily cover

* II.B.34 → large ponding water noted on LF - possible leachate seeps on other side of standing water (Had on East side of cell 3; seeps on West side of cell 2)

II.B.54 → Sp. cond 6.C Yard Trash processing area had ponding water in unprocessed piles & between windrows. Sp. cond 14.a → flagging noted @ initial covering.

- UNKNOWN → II.C.63: Financial document approval has not been received by the Department from Tallahassee.

- UNKNOWN → III.A.18: same response as II.C.63

III.A.24 → Permit renewal due 4-1-03 has not been received by the Department (Sp cond 4)

WTPF looked OK Financial documents are unknown from Tallahassee.

Please respond to the above deficiencies in writing to the Department within 15 days.

Signed: Lera Bodd 14-30-03
DEP Representative Date

Received: Don Shaulis 4/30/03
Site Representative Date

Ross, Lora

From: Pelz, Susan
Sent: Thursday, February 27, 2003 4:50 PM
To: Ross, Lora
Subject: electronics-Sarasota Co

I (finally after trying for 2 weeks) spoke to Paul Winger @ Sarasota Co today about electronics. Here's what he told me their process is: they receive electronics (mostly TVs) from the public and special pickups by their waste haulers. They store the electronics on a concrete pad (uncovered) temporarily until someone from the HHW comes to pick them up (about twice per week). The HHW staff picks them up and takes them to a box container (not roll-off, but like a box truck) where they store them until they have a full load then they send them off (somewhere) for recycling.

I asked him to verify where they actually send them for "recycling."

I also told him that "yes they are at least Class I waste, if not hazardous." However, since they remove them from the concrete pad twice per week (that's pretty frequent) and store them in an enclosed container until they remove them, I think they're o.k. If they left them out in the open (uncovered) for long periods of time, they could be weathered and possibly leach contaminants into the ground. But for twice per week removal, I wouldn't expect there to be a problem.

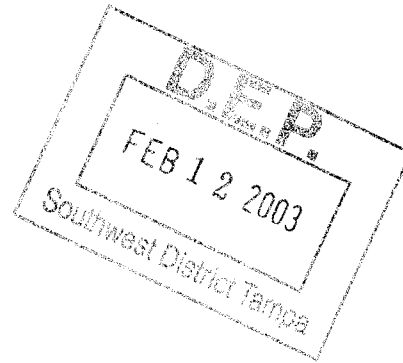
If you want to talk more about when "to cover or not to cover" Class I, let me know... maybe I should sit down with you Lindsay & Stephanie & to discuss.

Thanks,
Susan



SARASOTA COUNTY

"Dedicated to Quality Service"



February 7, 2003

Lora Ross
Florida Department of Environmental Protection
3804 Coconut Palm Drive
Tampa, Florida 33619-8318

Re: Central County Solid Waste Disposal Complex
Inspection – January 29, 2003

Dear Ms. Ross:

This letter is in response to the 'written reply requirement' in keeping with our recent inspection.

- Flagging was noted at the active cell – the flagging was largely due to a combination of recent high winds as well as traffic over the cover material which resulted in pumping. The operator was notified and additional cover, coupled with his routine litter collection, remedied the condition.
- We have recently initiated a curbside electronic collection program. The program is very successful and we have diverted approximately 150 tons of electronics from the waste stream at a recycling cost ranging up to \$12.50 per unit. I am inquiring at Susan Pelz's office regarding the background of the Class I designation for electronics.
- The contract operator has been notified regarding our Yard Waste Area and the 15 feet separation between windrows. The proper distance will be maintained as additional windrows are developed.

I appreciate your thoroughness and, I am confident you know we will remedy all of the issues as they occur.

If you have any questions, please contact me at (941) 861-1578.

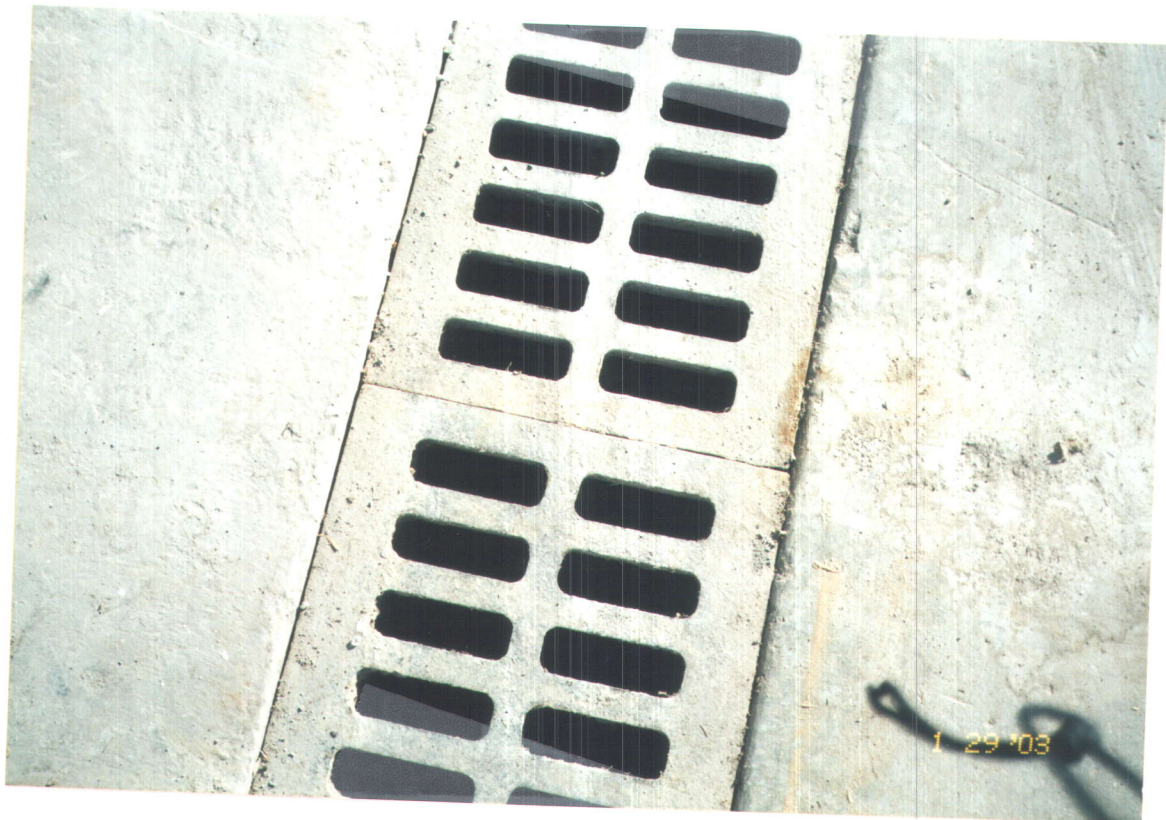
Sincerely,

Paul A. Wingler, P.E.
Interim Solid Waste Operations Manager

Attachments

cc: Larry Alexander, Onyx Waste Services of Florida, Inc.
Susan J. Pelz, P.E., FDEP - Tampa















FLORIDA DEPARTMENT OF ENVIRONMENTAL PROTECTION
SOLID WASTE MANAGEMENT FACILITY
INSPECTION CHECKLIST

CL I 193444 M
MRF 203454 I

8/2/18

Facility Name: Central County Solid Waste Disposal Complex
WACS No. _____ GMS I.D. Number (if available): 4058CO2034
Inspection Date: 1/29/03 Permit No.: 134912-001-30 MRF Expiration Date: 7/30/02 in renewal
Facility Address: 400 Knights Trail Rd
City: Nokomis County: Sarasota Zip: 34275
Permittee or Operating Authority: Sarasota County Solid Waste Department
Telephone Number (Permittee or Operating Authority): 941-486-2600

Inspection Participants (Include ALL Landfill and Department Employees Specifying Titles):

Principal Inspector: Lora Pross

Other Participants: Don Shaulis, Paul Wingler

TYPE OF FACILITY (check all that apply):

Landfill: <input checked="" type="checkbox"/> Class I <input type="checkbox"/> Class II <input type="checkbox"/> Class III	C&D Facility: <input type="checkbox"/> Disposal <input type="checkbox"/> Disposal w/Recycling <input type="checkbox"/> Land Clearing	Waste Processing Facility: <input type="checkbox"/> Transfer Station <input type="checkbox"/> C&D Recycling <input checked="" type="checkbox"/> Class III MRF <input type="checkbox"/> MSW MRF <input type="checkbox"/> Pulverizer/Shredder <input type="checkbox"/> Compactor/Baling <input type="checkbox"/> Other _____	Other Facilities: <input type="checkbox"/> Composting <input type="checkbox"/> WTE Facility <input type="checkbox"/> Incinerator/Trench Burner <input type="checkbox"/> Unauthorized Disposal <input type="checkbox"/> Other _____
---	---	---	---

TYPE OF INSPECTION (check all that apply):

<input type="checkbox"/> Construction Completion <input checked="" type="checkbox"/> Operation <input type="checkbox"/> Closure <input type="checkbox"/> Long-Term Care	<input type="checkbox"/> Complaint Investigation <input checked="" type="checkbox"/> Routine Inspection <input type="checkbox"/> Reinspection <input type="checkbox"/> Facility File Review	<input type="checkbox"/> Other _____
--	--	--------------------------------------

REQUIREMENTS:

THE REQUIREMENTS LISTED IN THIS INSPECTION CHECKLIST ARE BASED UPON RULES OF THE FLORIDA ADMINISTRATIVE CODE. A "NO" RESPONSE TO A REQUIREMENT (UNLESS OTHERWISE NOTED) REFLECTS A VIOLATION OF THE CORRESPONDING DEPARTMENT RULE(S). EACH VIOLATION IS DISCUSSED IN THE NARRATIVE SECTION OF THIS REPORT.

I. SOLID WASTE PROHIBITIONS (unless "grandfathered" in, see 62-701.300(16))	YES	NO	Unk	N/A
1. Unauthorized disposal/storage prohibited in areas lacking geological support? 62-701.300(2)(a)	<input checked="" type="checkbox"/>			
2. Unauthorized disposal/storage prohibited, except yard trash, within 500' of a potable water well? 62-701.300(2)(b)	<input checked="" type="checkbox"/>			
3. Unauthorized disposal/storage prohibited in a dewatered pit unless pit is lined and has leachate controls? 62-701.300(2)(c)	<input checked="" type="checkbox"/>			
4. Unauthorized disposal/storage prohibited in an area subject to frequent and periodic flooding unless flood protection measures in place? 62-701.300(2)(d)	<input checked="" type="checkbox"/>			
5. Unauthorized disposal/storage prohibited in any natural or artificial body of water including ground water? 62-701.300(2)(e)	<input checked="" type="checkbox"/>			

I. SOLID WASTE PROHIBITIONS (CONTINUED)		YES	NO	Unk	N/A
6.	Unauthorized disposal/storage prohibited, except yard trash, within 200' of any natural or artificial body of water, including wetlands without permanent leachate controls, except impoundments or conveyances which are part of an on-site, permitted stormwater management system or on-site water bodies with no off-site discharge? 62-701.300(2)(f)	✓			
7.	Unauthorized disposal/storage prohibited on the right of way of any public highway, road or alley? 62-701.300(2)(g)	✓			
8.	Unauthorized disposal/storage prohibited, except yard trash, within 1000' of a potable water well serving a community water system? 62-701.300(2)(h)	✓			
9.	Is open burning of solid waste prohibited except in accordance with Department requirements? 62-701.300(3)	✓			
10.	Is hazardous waste disposal prohibited? 62-701.300(4)	✓			
11.	Is PCB disposal prohibited except in accordance with Department requirements? 62-701.300(5)	✓			
12.	Unless specifically authorized, is the known disposal of untreated biomedical waste prohibited? 62-701.300(6)	✓			
13.	Is lead-acid battery disposal prohibited? 62-701.300(8)(a)	✓			
14.	Is yard trash disposal prohibited in lined landfills? 62-701.300(8)(c)	✓			
15.	Is the disposal of white goods prohibited? 62-701.300(8)(d)	✓			
16.	Is whole waste tire disposal prohibited except in accordance with Department requirements? 62-701.300(8)(e)	✓			
17.	Is the known disposal of lead-acid batteries, mercury-containing devices, or spent mercury-containing lamps in waste-to-energy facilities prohibited? 62-701.300(9)				✓
18.	Is the facility in compliance with the liquid restrictions on disposal? 62-701.300(10)	✓			
19.	Is the disposal of used oil or used oil mixed with wastes prohibited in landfills with the exception of: (1) oily wastes, sorbents or other materials used for maintenance or to clean up spills, leaks or accidental releases of used oil; and (2) soils contaminated with used oil from spills and accidental releases? 62-701.300(11) and 62-701.300(8)(b)	✓			
20.	Is the unauthorized storage/disposal of yard trash prohibited within the minimum setbacks for potable water wells (except on-site), water bodies and community water supply wells? 62-701.300(12)	✓			
21.	Is the storage of solid waste in an approved tank prohibited within 500 feet of any existing community water supply well or within 100 of any other existing potable water supply well? 62-701.300(13)	✓			
22.	Is the facility exempted from the prohibitions because of indoor storage in an area with an impervious surface and leachate collection system? 62-701.300(14)	✓			
23.	Is the facility exempted from the prohibitions because of storage in a vehicle that is enclosed or covered and the vehicle has been unloaded or moved over public highways within the previous seven days? 62-701.300(15)	✓			

II. CLASS I, II & III LANDFILLS		YES	NO	Unk	N/A
A. CONSTRUCTION VERIFICATION					
1.	Subgrade or foundation adequately prepared? 62-701.400(3)(a)2				
2.	Liner construction/installation according to plans? 62-701.400(3)				
3.	Leachate collection and removal system installed according to plans? 62-701.400(4)				
4.	Disposal units constructed at planned intervals? 62-701.400(2)				
5.	Gas management system installed according to plans (if currently required)? 62-701.530(3) & (4)				
6.	Soil monitoring probes (for monitoring combustible gases) installed along property boundaries as needed? 62-701.530(2)(b)				
7.	Surface water management system construction according to plans? 62-701.400(9)				
8.	Ground water monitoring system constructed according to approved plan? 62-701.510(2)				
9.	Leachate storage constructed according to plans? 62-701.400(6)				
10.	Liner quality assurance plan followed? 62-701.400(7)				
B. OPERATION AND MAINTENANCE					
11.	Trained operator on-site at Class I and III landfills during operation? 62-701.500(1)	✓			
12.	At least one spotter at each working face during operation at Class I and III ? 62-701.500(1)	✓			

II. CLASS I, II & III LANDFILLS (CONTINUED)		YES	NO	Unk	N/A
B. OPERATION AND MAINTENANCE (CONTINUED)					
13.	Is the training plan maintained and available on-site and is it being followed properly? 62-701.320(15)(a)	✓			
14.	Are training records maintained and available on-site at the facility? 62-701.320(15)(a)	✓			
15.	Approved operating plan and permit, operating and waste records maintained? 62-701.500(2), (3), (4), (8)(f), (8)(g), (13)	✓			
16.	Is the operation plan substantially complied with at all times and revised as needed? 62-701.500(2)	✓			
17.	Weighing or measuring of incoming waste? 62-701.500(4)(a)&(2)(d)	✓			
18.	Method and sequence of filling waste according to plans? 62-701.500(2)(f)	✓			
19.	Is access properly controlled to prevent unauthorized waste disposal? 62-701.500(5)	✓			
20.	Load checking program implemented? 62-701.500(6)	✓			
21.	Waste compaction as required? 62-701.500(7)(a)	✓			
22.	Working face and side grades above ground sloped no greater than 3 ft. horizontal to 1 ft. vertical rise? 62-701.500(7)(c)	✓			
23.	Is a narrow working face practiced? 62-701.500(7)(d)	✓			
24.	Are only permitted waste types disposed at facility? 62-701.340(3), 62-701.500(6)(a)&(2)(c)	✓			
25.	Is an adequate quantity of acceptable cover material available as stated in permit application? 62-701.330(3)(e)4, 62-701.530(1)(a)	✓			
26.	Frequency, amount and quality of initial cover, as required? 62-701.500(7)(e)		✓		
27.	Initial cover adequate to control birds, blowing wastes, disease vectors or fires? 62-701.500(7)(e)	✓			
28.	Frequency, amount and quality of intermediate cover, as required? 62-701.500(7)(f)	✓			
29.	Uncontrolled and unauthorized scavenging prohibited? 62-701.500(7)(h)	✓			
30.	Litter controlled and litter control devices maintained? 62-701.500(7)(i) and (11)(f)	✓			
31.	Adequate erosion control? 62-701.500(7)(j)	✓			
32.	Is leachate sampled and tested as required? 62-701.500(8)(a) & 62-510(6)(c)	✓			
33.	Leachate collection and removal system maintained and cleaned as required? 62-701.500(2)(j), 62-701.500(8)(b) & (h)	✓			
34.	Leachate disposed of or treated as required? 62-701.500(8)(b), (c) and (d)	✓			
35.	If leachate recirculation is practiced at the facility, is it done in accordance with Department requirements and the Operation Plan? 62-701.400(5)				✓
36.	Gas monitoring according to permit? 62-701.500(9) & 62-701.530(2)	✓			
37.	Gas controlled to not cause objectionable odors beyond the property boundary? 62-701.530(3)(b)	✓			
38.	Gas controlled to not allow combustible gas concentrations to exceed specified limits? 62-701.530(3)(a)	✓			
39.	Gas pressures not interfering with or causing failure of the liner or leachate control system? 62-701.530(1)(a)4.	✓			
40.	Gas vents intact and functioning properly? 62-701.500(9) & 62-701.530(1)(a)3.	✓			
41.	Mixing of leachate and stormwater prevented or minimized? 62-701.500(10) & 62-701.400(9)(c)	✓			
42.	Peak discharge stormwater run-on to unclosed portions of the landfill prevented as required? 62-701.500(10), 62-701.400(9)(b)	✓			
43.	Retention and/or detention ponds/ditches, culverts, berms maintained? 62-701.500(10)	✓			
44.	Sufficient operating equipment? 62-701.500(11)(a)	✓			
45.	Sufficient reserve equipment (or other arrangements)? 62-701.500(11)(b)	✓			
46.	Adequate communication facilities? 62-701.500(11)(c)	✓			
47.	Adequate approved dust control methods? 62-701.500(11)(d)	✓			
48.	Fire protection and fire fighting facilities adequate and operational? 62-701.500(11)(e)	✓			
49.	Required signs for operational directions and public information? 62-701.500(11)(g)	✓			
50.	Are all-weather access roads and inside perimeter roads properly maintained? 62-701.500(12)				
51.	Ground water wells intact and functioning properly? 62-701.510(2)(b), 62-701.620(9)	✓			
52.	Water quality sampling and testing according to standard procedures and at required frequencies? 62-701.510(2)	✓			
53.	Is there proper control, management or disposal of special wastes? 62-701.520	✓			
54.	Are all specific conditions in the permit being followed? 62-701.320(1)		✓		

II. CLASS I, II & III LANDFILLS (CONTINUED)		YES	NO	Unk	N/A
C. CLOSURE					
55.	Final cover installation according to approved design plans and does the present condition and function appear adequate? 62-701.600(5)(f)(2)				
56.	Gas pressures not interfering with or causing failure of the final cover? 62-701.530(1)(a)4.				
57.	Facility meets closure requirements prohibiting unauthorized dumping? 62-701.600(5)(l)				
58.	All actions for closure completed satisfactorily according to approved closure operation plan? 62-701.600(6)				
59.	Have a final survey or an as-built report with all survey monuments and other permanent markers for waste filled areas been received ? 62-701.610(2) & (3)				
60.	Authorized use of closed landfill and integrity of environmental protection measures maintained? 62-701.610(7)				
61.	If waste is being relocated, is this performed according to the Department's requirements? 62-701.620(8)				
62.	Long term care performed adequately? 62-701.620				
63.	Financial assurance adequate? 62-701.630			✓	
64.	Are cost estimates current and adjusted every year? 62-701.630(4)	✓			

III. WASTE PROCESSING FACILITIES		YES	NO	Unk	N/A
A. OPERATION AND MAINTENANCE					
1.	Do the tipping, processing, sorting, storage and compaction areas that are in an enclosed building or covered area have ventilation systems? 62-701.710(3)(a)	✓			
2.	Are areas of the facility that are not enclosed equipped with litter control devices and visual screening? 62-701.710(3)(a)	✓			
3.	Except for C&D Recyclers, is the facility designed with a leachate control system to prevent discharge of leachate and mixing of leachate with stormwater, and to minimize the presence of standing water? 62-701.710(3)(b)	✓			
4.	If the facility is a C&D Recycler, is it designed with a leachate control system to prevent discharge of leachate and mixing of leachate with stormwater, and to minimize the presence of standing water or are all areas where waste is stored or processed covered by an approved ground water monitoring program? 62-701.710(10)(b)	✓			
5.	Is an Operation and Maintenance Manual available at the facility and is it being followed? 62-701.710(4)(a)1.	✓			
6.	Are there procedures available at the facility to handle unauthorized wastes? 62-701.710(4)(a)2.	✓			
7.	Is a Contingency Plan available at the facility which addresses operational interruptions and emergencies such as fires, explosions or natural disasters? 62-701.710(4)(a)3.	✓			
8.	Are putrescible wastes not allowed to be stored unprocessed longer than 48 hours or longer than seven days if adequate vector and odor controls are provided? 62-701.710(4)(b)	✓			
9.	Are areas where waste is stored or processed cleaned at least weekly to prevent odor and vector problems? 62-701.710(4)(b)	✓			
10.	Are all drains and leachate conveyances kept clean so that leachate flow is not impeded? 62-701.710(4)(b)	✓			
11.	Are the operating hours posted at the facility? 62-701.710(4)(c)1.	✓			
12.	Is a trained operator on duty whenever the facility is operating? 62-701.710(4)(c)1.	✓			
13.	Is at least one trained spotter on duty at all times that waste is received at the facility to inspect the incoming waste? 62-701.710(4)(c)2.	✓			
14.	Are prohibited materials removed from the waste stream and placed into appropriate containers for disposal at a permitted facility? 62-701.710(4)(c)2.	✓			
15.	Is the facility operated to control objectionable odors? 62-701.710(4)(d)	✓			
16.	Is adequate fire protection equipment available at all times? 62-701.710(4)(e)	✓			
17.	Is access to the facility controlled by fencing or other effective barriers to prevent disposal of unauthorized waste? 62-701.710(4)(f)	✓			
18.	Except for Transfer Stations, is financial assurance for the facility adequate? 62-701.710(7)(a)			✓	
19.	Except for Transfer Stations, are cost estimates current and adjusted as required? 62-701.710(7)(b)	✓			

III. WASTE PROCESSING FACILITIES (CONTINUED)		YES	NO	Unk	N/A
A. OPERATION AND MAINTENANCE (CONTINUED)					
20.	If the facility is a Transfer Station, is it exempt from providing financial assurance because it accepts primarily household waste, commercial waste or recovered materials and manages the waste on a first-in, first-out basis and stores waste for no greater than 7 days? 62-701.710(10)(a)				✓
21.	Is stormwater controlled in accordance with Department requirements? 62-701.710(8)	✓			
22.	Are adequate operational records available at the facility and maintained for at least three years? 62-701.710(9)(a)	✓			
23.	If the facility is a C&D Recycler, is an Annual Report for the recycling operation submitted to the Department by April 1 of each year? 62-701.710(9)(b)	✓			
24.	Are all specific conditions in the permit being followed? 62-701.320(1)	✓			
B. CLOSURE					
25.	Are all wastes removed or disposed of in accordance with the approved Closure Plan within 30 days of receiving the final solid waste shipment? 62-701.710(6)(c)				
26.	Are stored putrescible wastes managed in accordance with Rule 62-701.710(4)(b)? 62-701.710(6)(c)				
27.	Has closure been completed within 180 days after receiving the final solid waste shipment? 62-701.710(6)(d)				

IV. C&D DEBRIS FACILITIES		YES	NO	Unk	N/A
A. DISPOSAL					
1.	Is the facility only disposing of C&D wastes and are prohibited wastes properly managed? 62-701.730(4)(c), (6) & (7)(d)				
2.	Ground water wells intact and functioning properly? 62-701.510(2)(b), 62-701.730(4)(b)				
3.	Water quality sampling and testing according to standard procedures and at required frequency? 62-701.730(4)(b) & (10)				
4.	Is stormwater controlled in accordance with Department requirements? 62-701.730(5)				
5.	Are wastes compacted and sloped as necessary for later closure? 62-701.730(7)(b)				
6.	Is access to the facility properly controlled? 62-701.730(7)(c)				
7.	Is a trained operator on duty at the facility at all times the facility is operating and are there a sufficient number of spotters on duty at the working face to inspect the incoming wastes at all times waste is being accepted? 62-701.730(7)(d)				
8.	Are objectionable odors controlled in accordance with Department requirements? 62-701.730(7)(e)				
9.	Are fuels, solvents, lubricants, etc. safely stored in areas separate from disposal or sorting areas? 62-701.730(7)(f)				
10.	Are plastic buckets empty before disposal? 62-701.710(7)(g)				
11.	Are the spotters or operators properly trained? 62-701.730(8)				
12.	Are areas of the facility requiring final cover properly closed? 62-701.730(9)				
13.	Is financial assurance adequate? 62-701.730(11)(a)				
14.	Are cost estimates current and adjusted as required? 62-701.730(11)(b)				
15.	Are Annual Reports submitted to the Department for the disposal operation by April 1? 62-701.730(12)				
16.	If an air curtain incinerator is also used at the facility, is it properly operated? 62-701.730(14)				
17.	Is the facility operated so that adverse environmental and public health impacts, such as blowing litter and vectors, are minimized? 62-701.730(18)				
18.	Are asbestos-containing waste materials regulated pursuant to 40 CFR Part 61, Subpart M, prohibited from disposal at the facility? 62-701.730(19)				
19.	Are all specific conditions in the permit for the disposal operation being followed? 62-701.320(1)				

V. OTHER SOLID WASTE FACILITIES

1. WTE facility in compliance with all permit conditions and applicable requirements?
62-701.320(1)
2. Compost facility in compliance with all permit conditions and applicable requirements?
62-701.320(1)

YES	NO	Unk	N/A

VI. NARRATIVE

Explanation for all "NO" responses and other comments (continue on separate sheet if necessary)

- CL I II.B.26 → Flagging was observed on daily cover.
II.B.54 → Same response for II.B.26. Sp. Cond 14.a Initial cover had flagging. *NOTE: Recycled electronics are considered CL I material - they should be covered or in roll-offs Sp. Cond 6
~~II.B.54 → Daily cover had flagging~~ dk OK
* II.B.52 → Groundwater monitoring report is due 2-3-03.

UNKNOWN:

- a I II.C.63 → SW District has approved inflation adjustments however Tallahassee documentation indicating that final documents have been approved have not been received.
MRF II.A.18 SAME Response as II.C.63.

Yard ~~Trash~~ Trash → Windrows need to be 15ft apart.

- Special waste: scrap metal & white goods are properly managed. Flares have been installed
- Food composting area will be in Cell 3 of the landfill.
- Renewal for MRF is due 4/1/03

Please respond to the above deficiencies in writing within 15 days

Signed: Don Ross 1/12/03
DEP Representative Date

Received: Don Shaulis 1/29/03
Site Representative Date













