

for the

RECEIVED

DEC 27 2002

D.E.F. 2000



LEE COUNTY
SOUTHWEST FLORIDA



Revised:
December, 2002
1971-036

LEE COUNTY TRANSFER STATION
OPERATIONS PLAN

TABLE OF CONTENTS

	PAGE
1.0 PURPOSE.....	3
2.0 SITE LAYOUT	3
3.0 GENERAL OPERATIONS	3
3.1 Description of Operations	3
3.2 Solid Waste Accepted at the Facility	4
3.3 Maximum Waste Storage Times	4
3.4 Operating Capacity	4
3.5 Operating Hours	4
3.6 Expected Life	4
3.7 Machinery and Equipment	4
3.8 Personnel	5
3.9 Records	5
3.10 Transfer Plan	5
3.11 Water Management	5
3.12 Traffic Management	7
3.13 Public Safety	7
3.14 Prohibited Wastes	7
3.15 Unauthorized Wastes	8
4.0 CONTINGENCY PLAN	8
4.1 Equipment Breakdown	9
4.2 Emergencies	9
4.3 Putrescible Wastes	9
4.4 Operator Training	9
4.5 Control of Objectionable Odors	10
4.6 Fires and Explosions	10
4.7 Access Control	11

TABLE OF CONTENTS

LIST OF APPENDICES

Appendix	Description
I	SWERF LAYOUT
II	WWTP AGREEMENT – CITY OF FORT MYERS
III	TRANSFER STATION LOADING, UNLOADING, AND STORAGE AREAS
IV	OPERATOR AND SPOTTER TRAINING COURSES

1.0 PURPOSE

The Lee County Solid Waste Division (the "County") will own and operate the Lee County Transfer Station, which will be located adjacent to the Solid Waste Energy Recovery Facility (SWERF) on Buckingham Road in Fort Myers, Florida. All activities at the facility shall be performed in accordance with this operations plan. The plan shall be updated, as operations change, but not less frequently than upon renewal of the operations permit. This Operations Plan describes the operations, maintenance, and management of the facility in accordance with the requirements of Chapter 62-701.710, Florida Administrative Code (FAC).

2.0 SITE LAYOUT

A layout of the SWERF facility is included as Appendix I.

3.0 GENERAL OPERATIONS

3.1 Description of Operations

Incoming collection and transfer vehicles will use the existing entrance roads through the main scale house. Collection vehicles will travel behind the WTE plant to the transfer facility, then will enter the transfer station tipping floor and discharge loads. Transfer vehicles will follow the same route, but will be directed to one of three transfer tunnels located below the tipping floor. Once a transfer vehicle is in place, a front-loader will push the solid waste from the tipping floor to a drop chute, where it will fall into the transfer trailer. A drawing of the loading, unloading, and storage areas is included as Appendix III.

Empty collection vehicles will exit out of the transfer station, merge onto the onsite one-way loop road, then exit the property through the scale house. Loaded transfer vehicles will exit the transfer tunnel, turn onto the transfer station exit road and continue onto the loop road, through the truck scale and exit the facility. The County may use either of the two onsite scales or even the scales at the Lee-Hendry Landfill to weigh the transfer vehicles.

3.2 Solid Waste Accepted at the Facility

The waste will originate in incorporated and unincorporated areas of Lee County. The waste includes residential, commercial, and industrial refuse bypassed from the SWERF, and is expected to be up to 1,000 tons per day.

3.3 Maximum waste storage times

Municipal solid waste (MSW) typically will be transferred to the Lee-Hendry landfill within 48 hours but a longer storage time of up to seven days may occasionally be required following holidays, hurricanes, or unanticipated events. The building enclosure will minimize the occurrence of odors and vectors. However, in the rare event that putrescible wastes are stored for more than 48 hours, vectors and odors will be controlled using FDACS (Ch. 5E-2, FAC) approved pesticides and odor control agents such as Odo-ban (or equivalent) as necessary.

3.4 Operating Capacity

The facility is designed to handle 1,000 tons (nominal) of solid waste per day.

3.5 Operating Hours

When operating, the facility will normally be open Monday – Saturday from 6:00 AM – 6:30 PM, but additional time may occasionally be required following holidays, hurricanes, or unanticipated events. The facility operating hours shall be posted at the main entrance.

3.6 Expected Life of Facility

The facility can operate 20 years or more with proper maintenance.

3.7 Machinery and Equipment

The machinery and equipment expected to be used at the site include one to two front-end loaders (John Deere 644 with 7 cubic yard bucket and/or John Deere 344 with 3 cubic yard bucket or equivalents), one rubber tire backhoe with clamshell (John Deere 410G with 1.5 cubic ya or equivalent), 3-6 tractors and 3-12 transfer trailers (100 cubic yard), and one trailer truck ("yard dog").

3.8 Personnel

The Lee County Solid Waste Director will be responsible for the overall operation of the facility. The person responsible for managing/operating the facility on a daily basis is designated as the Transfer Station Operator. The Transfer Station Operator will be trained in accordance with FAC 62-701.320(15)(b)2., will have the authority to make operating decisions on a daily basis, and will have a direct line of communication to the Director of the Lee County Solid Waste Division. All equipment operators and other personnel involved with facility operation are expected to be employees of Lee County. However, the County may contract for some or all of the transfer station operations through private entities.

3.9 Records

Operational records will be maintained in accordance with FAC Rule 62-701.710(9), which include a daily log of the solid waste received by and transported from the transfer station and the origin of the waste (e.g., Lee County), if known. The records will be compiled monthly and will be available for inspection by Department personnel during hours of operation. The records will be retained at the facility for three years, not at any other location.

3.10 Transfer Plan

The transfer route is from the Lee County Transfer Station to the Lee-Hendry Landfill, as shown in Figure 1. The route follows U.S. 82 east, then turns north on South Church Road to the landfill outside Felda. Typically, the County will use 3-12 transfer trucks to transport waste to the Lee-Hendry Landfill. The number and type of transfer vehicles will change to suit market and economic conditions. Transfer of materials to other permitted disposal or recycling facilities may be required on occasion.

3.11 Water Management

a. Stormwater

The transfer station roof structure will be drained by a conventional gutter and downspout system. The surrounding grounds and parking lots will be sloped appropriately to direct stormwater into the stormwater collection system.

LEE COUNTY TRANSFER STATION OPERATIONS PLAN

b. Wastewater/Leachate

Wastewater will drain to a pump station adjacent to the transfer facility, where it will be pumped into the existing sewer system. A copy of the commitment letter from the City of Fort Myers is included as Appendix II.



Figure 1
Transfer Route to Lee-Hendry Landfill

Leachate generated in the transfer station will be washed into drains located on the transfer station floor and transfer tunnels. The drains will transport the leachate to the wastewater pump station, which will pump the leachate into the existing onsite sewer system. The facility is designed to prevent discharge of leachate and mixing of leachate with stormwater.

c. Potable Water

The facility water supply needs will be provided by the existing onsite water supply systems.

d. Fire Protection

Water for fire protection and facility washdown will be supplied from the existing onsite reuse system.

3.12 Traffic Management

The on-site roads and unloading areas are designed for efficient movement and unloading of vehicles. The roads are designed to be as close to the buildings as possible while providing enough room for the trucks to properly maneuver into the transfer tunnels and around the site. The roadways and loading and unloading areas are shown on the site plan.

3.13 Public Safety

Safety procedures will be established for all personnel entering the transfer station including private vehicles. Safety procedures include signs, safety equipment, and appropriate staffing of competent individuals capable of dealing with any health or safety issues that may arise.

3.14 Prohibited wastes

Prohibited wastes, e.g., hazardous or infectious wastes, will not be accepted at the Lee County Transfer Station. The operator will inspect loads as the collection vehicles deposit waste onto the tipping floor, as waste is moved to a temporary storage location, and during waste loading into the transfer trailers. Prohibited and non-processible wastes will be separated and collected as they are identified and will be temporarily stored in the designated areas until removed from the site.

In addition, the operator will inspect at least three loads selected at random per week in accordance with FAC 62-701.710(4)(a)(2). The drivers of the

selected loads will be directed to unload in an area slightly offset from the active tipping floor and to remain with the load until the inspection is completed. The operator will spread the load with the loader bucket and then visually inspect the load for prohibited wastes. In the unlikely event that prohibited wastes are discovered at the facility, the site will follow the procedures for unauthorized wastes, which are provided in Section 3.15 below.

If hazardous waste is detected before or after unloading, the Department will be immediately notified at (239) 332-6975 during normal business hours, and at (850) 413-9911, or toll free (800) 320-0519 during other hours, and the facility shall follow the instructions from the Department.

3.15 Unauthorized wastes

Unauthorized wastes (e.g., hazardous) will also not be accepted at the Lee County Transfer Station. If unauthorized wastes are suspected in a waste load, the facility operator will question the generator and/or driver and if necessary, contact the site supervisor and other personnel to verify the suspicious waste. In the unlikely event that unauthorized wastes are discovered at the facility, the customer who delivered the waste will be notified immediately. The customer, as the responsible party, will be directed to remove the unauthorized waste and dispose of such waste in accordance with applicable Federal, State, and local requirements.

If unauthorized wastes are discovered after unloading, they will be directed to a designated "unauthorized waste storage area", which is approximately 500 square feet as shown on Sheet 4/4. The party responsible will be contacted by the facility operator and asked to remove the unauthorized waste.

4.0 Contingency Plan

Every effort will be made to ensure that the facility operates as required to avoid emergencies or delays in transporting solid waste. However, in the event that equipment breaks down, emergencies arise, or delays in waste transportation are encountered, the following contingency plan is in place and will be followed:

4.1 Equipment Breakdown

A mechanic is on call from the Lee County Solid Waste Division in the event of equipment failure. In addition, the transfer station supervisor will ensure that backup equipment and/or parts are available or readily obtainable from equipment vendors or from other facilities as necessary.

4.2 Emergencies

Facility personnel will communicate with appropriate management personnel to handle any emergency situations that arise. In the event of a natural disaster, where the transfer station must be shut down with little notice general procedures will include securing the transfer site and equipment. Alternate procedures to be considered by management personnel include the following:

- a. Waste streams normally received at the facility may be processed on the tipping floor of the Resource Recovery Facility if it is operating during the emergency.
- b. Waste streams may be redirected to a landfill with permitted available airspace (e.g., Lee-Hendry Landfill).
- c. Waste Transport Delays: The site supervisor will ensure that backup waste transport capabilities are in place either from local vendors or other facilities.

4.3 Putrescible Wastes

The facility doors will be closed during non-operational hours to control vectors around solid waste temporarily stored on the tipping floor. In addition, all waste will be removed from the tipping floor at the end of the operating day whenever possible. These procedures will control litter, insects, odors and vectors to prevent sanitary nuisance and unsightly appearance at the station. The floors will be kept free of standing liquids. The floor will be sloped so that liquids are collected in the floor drains and directed into the wastewater collection system.

4.4 Operator Training

Operators will receive at least 19 hours of initial training from the University of Florida TREEO Center (or equivalent) and at least 8 hours of

continuing education every three years as required by FAC 62-701.320(15). A trained operator shall be on duty whenever the facility is operating.

Spotters will receive at least 8 hours of initial training from the University of Florida TREEO Center (or equivalent) and at least 4 hours of continuing education every three years as required by FAC 62-701.320(15). A trained spotter or operator will be on duty at all times on the tipping floor.

A detailed description of the TREEO training courses is included in Appendix IV.

4.5 Control of Objectionable Odors

The facility shall be operated to control objectionable odors in accordance with FAC Rule 62-296.320(2). Wastes are handled on a first-in, first-out basis to the extent practicable. In addition, waste storage areas will be washed as necessary to minimize odor and vector problems. All tipping, loading, and compaction activities will occur in a covered building.

Temporary storage prior to transport off-site is provided on the transfer station floor. Ventilation of the transfer station is provided through the access doorways.

4.6 Fire and Explosion

Adequate fire protection will be available at the facility at all times. Fire extinguishers will be located in the tipping floor area and in other locations around the transfer building. Fire escape doors will be located on the tipping level and escape is also possible through the large access doorways located on the transfer station.

The local fire department is currently the Tice Fire District. The closest fire station (station # 3) is located at 5850 Buckingham Road, Fort Myers, FL 33905 and the phone number is (239) 694-2380. In the event of a significant fire or explosion, the Department of Environmental Protection will be notified at (239) 332-6975 during normal business hours or at (850) 413-9911 or (800) 320-0519 during other hours.

4.7 Access Control

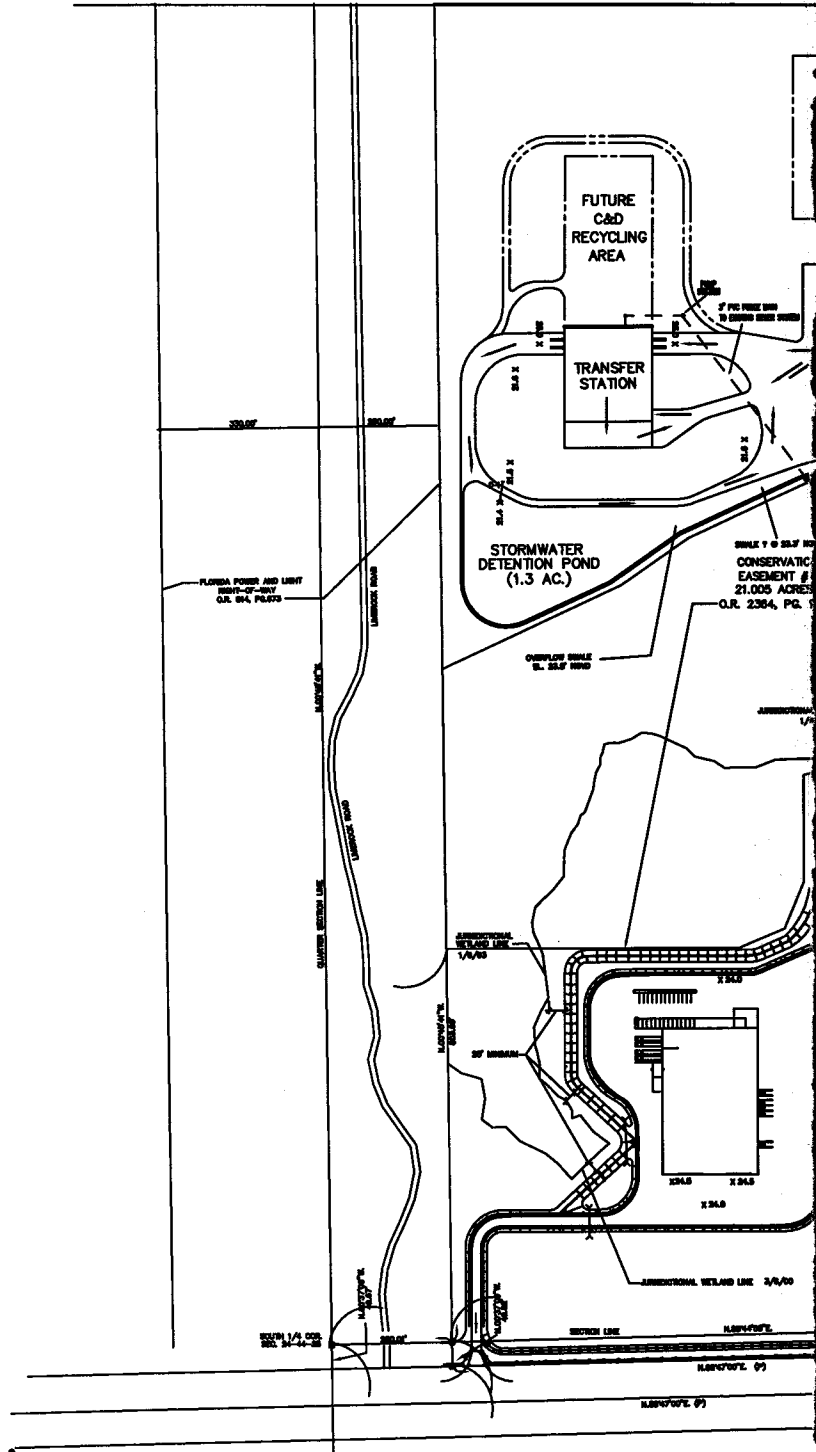
The transfer facility will be located on the existing WTE property, which is already equipped with appropriate fencing, gates, lighting, etc. to control access.

**MALCOLM
PIRNIE**

LEE COUNTY TRANSFER STATION OPERATIONS PLAN

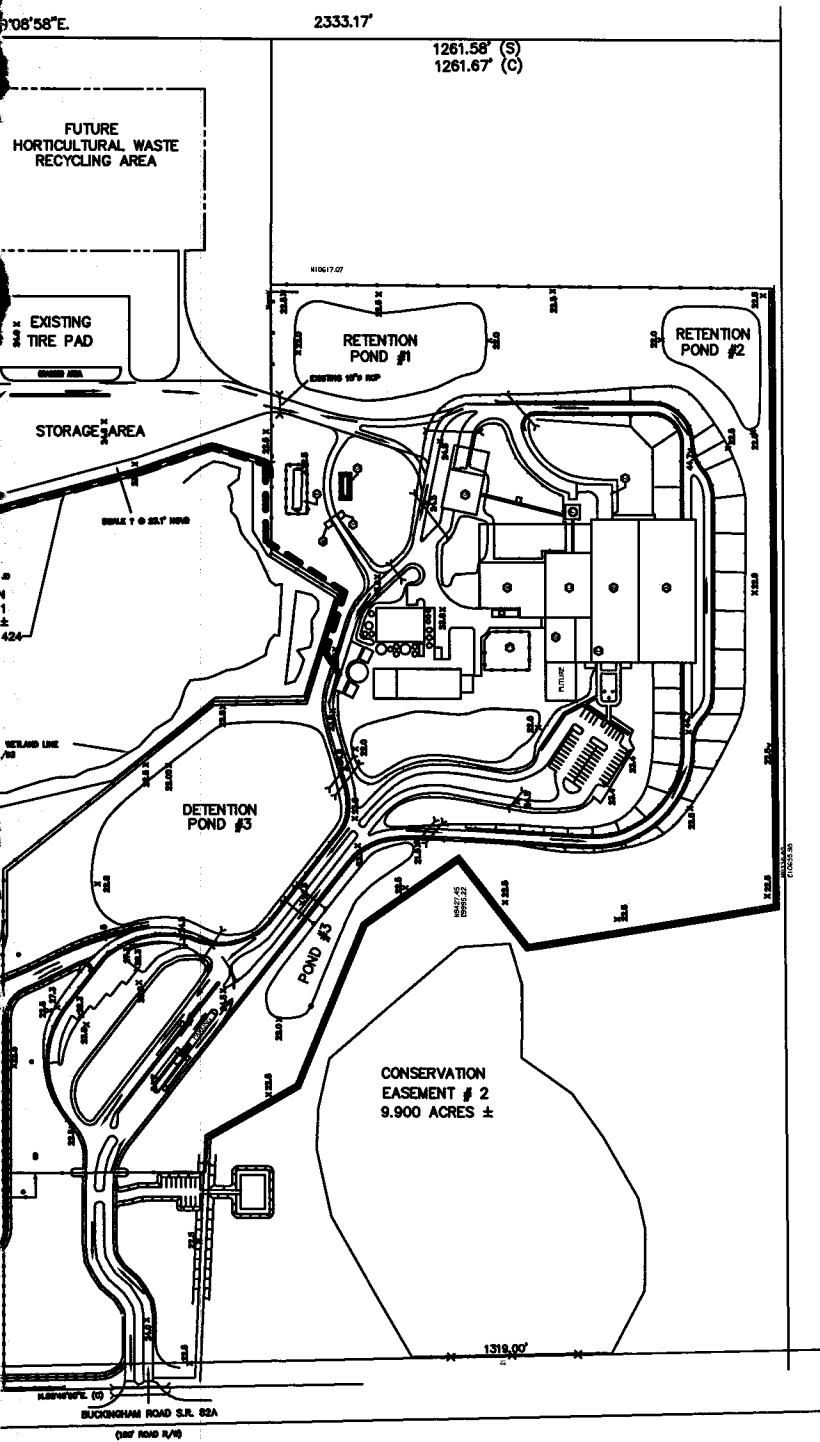
APPENDIX I SWERF FACILITY LAYOUT

1071.59' (S)
1071.67' (C)



**MALCOLM
PIRNIE**

LEE COUNTY SOLID WASTE DIVISION
10500 BUCKINGHAM ROAD
LEE COUNTY TRANSFER STATION
1971-036



LEE COUNTY TRANSFER STATION
 SITE PLAN
 TRAFFIC FLOW
 SCALE: 1" = 400'

MALCOLM PIRNIE, INC.

11/01/2002

SK-1

**MALCOLM
PIRNIE**

LEE COUNTY TRANSFER STATION OPERATIONS PLAN

APPENDIX II

CITY OF FORT MYERS WASTEWATER COMMITMENT LETTER



City Of Fort Myers, Florida

Wastewater Treatment Division

P.O. Drawer 2217
Fort Myers, Florida 33902
Telephone (941) 332-6871
Fax (941) 332-6668

December 26, 2002

Mr. Lindsey J. Sampson, Director
Lee County Solid Waste Division
10500 Buckingham Rd.
Fort Myers, Fl. 33905

RE : Wastewater Service for the Solid Waste Transfer Station

Dear Lindsey,

We have reviewed your December 20, 2002 correspondence in which you outline the steps you plan to take to treat and control the discharge of leachate from your proposed solid waster transfer station. The City of Fort Myers Wastewater Treatment Division feels that the equipment you plan to install will be adequate for us to issue a conditional Industrial Waste Discharge Permit. This permit will include the steps to be taken at start up of your facility that will help to insure that the treatment process at our Central AWWT Facility is not adversely affected. The City will accept wastewater from your facility that meets all of the standards set forth in the pretreatment ordinance as well as any other applicable rules or standards.

Please continue to work with John Palatta so that all of the details can be worked out in a timely manner. He can be reached at 239-461-7112.

Sincerely,

CITY OF FORT MYERS

Kevin C. Wagner
Wastewater Treatment Superintendent
(941-332-6870)

cc: Albert Abdo
TW Hunt
John Palatta
File

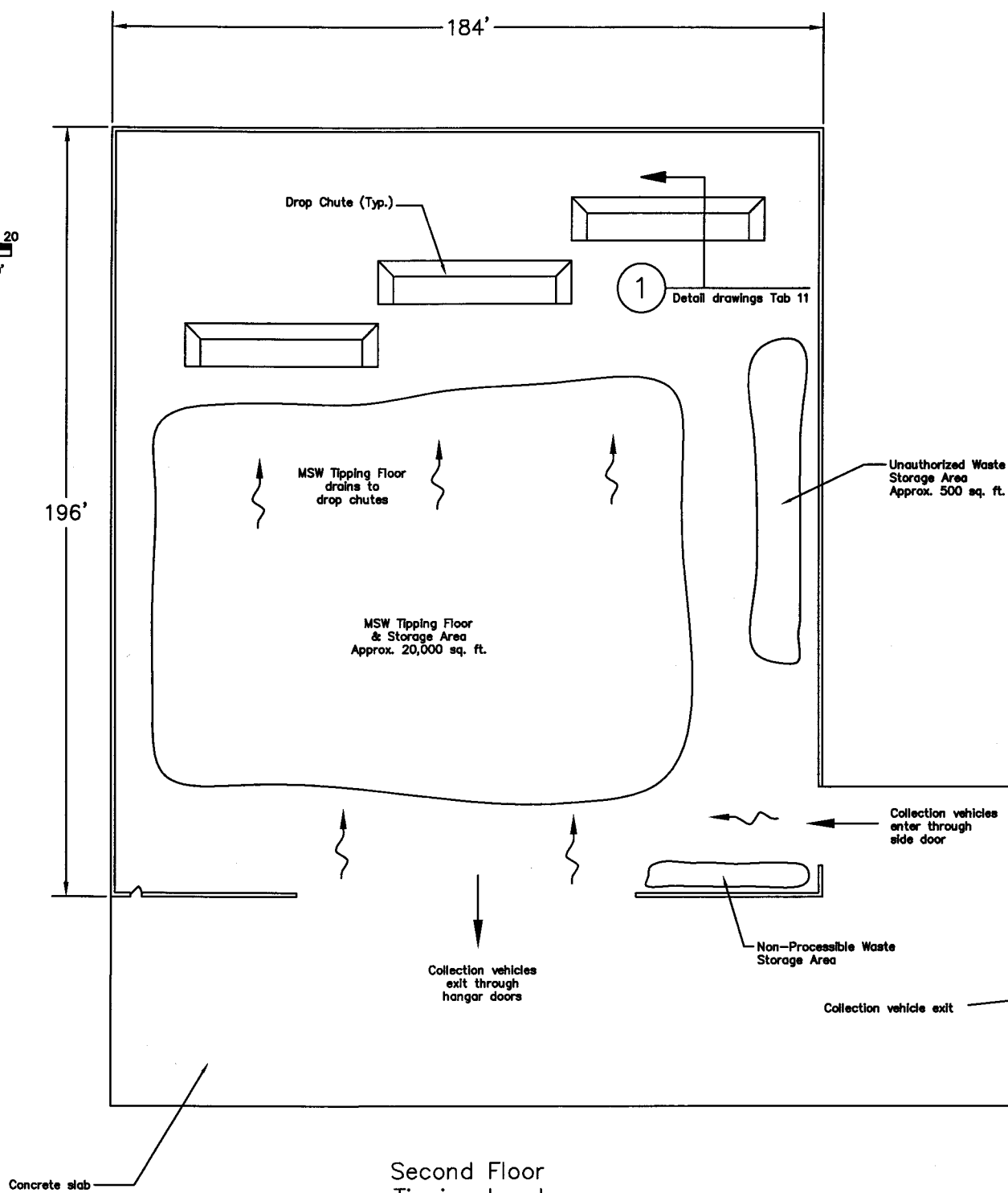
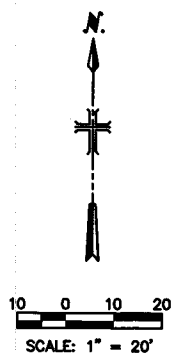


**MALCOLM
PIRNIE**

LEE COUNTY TRANSFER STATION OPERATIONS PLAN

APPENDIX III

TRANSFER STATION LOADING, UNLOADING, AND STORAGE AREAS



Second Floor
Tipping Level
Scale 1" = 20'
Elev. Approx. 43.0' NGVD

**MALCOLM
PIRNIE**

REVISIONS				
NO.	BY	DATE	REMARKS	

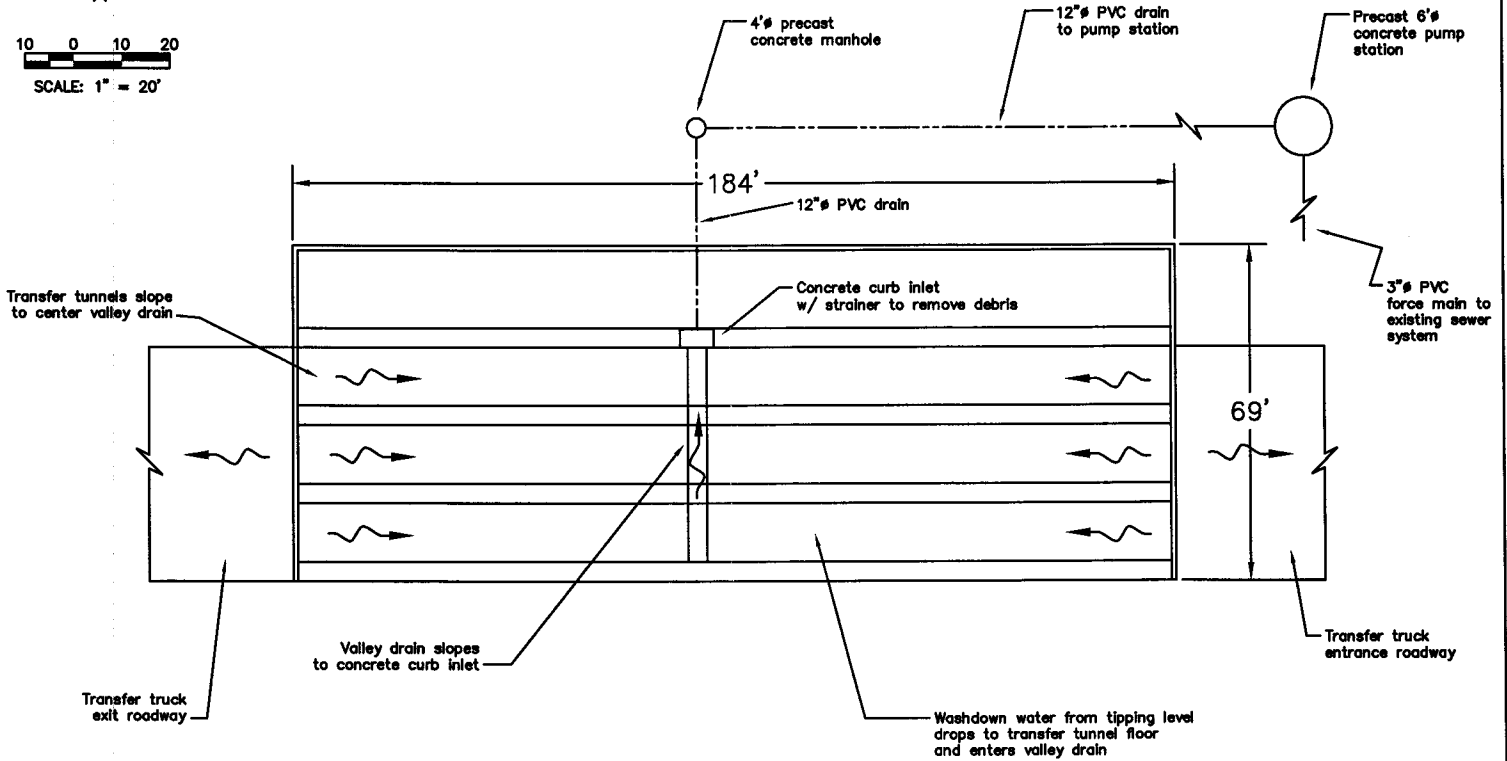
DES RTF
DWN CCT
CKD RTF

LEE COUNTY T

LEE
FORT



10 0 10 20
SCALE: 1" = 20'



First Floor
Transfer Level
Scale 1" = 20'
Elev. Approx. 25.0' NGVD

**MALCOLM
PIRNIE**

LEE COUNTY TRANSFER STATION OPERATIONS PLAN

APPENDIX IV

TREEO TRAINING COURSES

Solid Waste

Introduction

Courses-at-a-Glance

19-Hour Initial Training Course for Transfer Station Operators and MRF Operators

- | | | | |
|-----------------------|------------------|-------------------|--------|
| <input type="radio"/> | Apr. 7-9, 2003 | Punta Gorda, FL | 030538 |
| <input type="radio"/> | Nov. 18-20, 2003 | Daytona Beach, FL | 040059 |

Continue

Cost: \$395.00

Program(s): Solid Waste

- Attribute(s):
- CEU: 1.9
 - Solid Waste Initial TS/MRF: 19.0
 - Solid Waste I II III/C&D : 10.0
 - SWANA CEU: 2.50
 - Solid Waste TS/MRF: 8.0
 - Solid Waste Spotter: 4.0

Description:

This course is approved as an initial training for transfer station operators and MRF operators. The combined course will be held over three days and will include an exam. (Attendees must achieve 70% proficiency.) Topics include: Brief History of Solid Waste Management in U.S., Regulatory Aspects, The Modern Transfer Station and MRF Facility, Siting, Leachate and Stormwater, Ventilation and Odor Control, Waste Control, Operating Guidelines, Employee Health and Safety, Contingency Planning, Financial Responsibility, Monitoring Site Development and Efficiency, and Facility Closure.

Presented in cooperation with SWANA-Florida Chapter and SWANA.

Locations and Accomodations:

- Punta Gorda
- Daytona Beach

Instructor:

Chris Kohl
Kohl Consulting, Inc.

Agenda:

Registration/Check-in 7:45am

Day 1. 8:00am – 5:00pm

Brief History of Solid Waste Management in the U.S.

Regulatory Aspects of MRF and Transfer Operation
Federal / State / Local / DOT /
Modern Solid Waste Systems
Facility Siting

Day 2. 8:00am – 5:00pm

Leachate and Storm Water
Ventilation and Odor Control
Waste Control
Operating Guidelines
Employee Health and Safety
Contingency Planning

Day 3. 8:00am – 1:00pm

Monitoring Site Development and Efficiency
Financial Responsibility
Closure and Post Closure
Exam

* * * * *

Daily morning and afternoon breaks are scheduled. Lunch on your own.
Participant must be present for entire class time to receive CEU and
Certificate of Attendance.

TREEO Center • Division of Continuing Education • University of Florida

3900 SW 63rd Blvd.
Gainesville, FL 32608

tel: (352) 392-9570
fax: (352) 392-6910

train@treeo.doce.ufl.edu

Solid Waste

Introduction

Courses-at-a-Glance

8-Hour Initial Training Course for Spotters at Class I, II, III Facilities, Waste Processing Facilities and C&D Facilities

July 1, 2003

040076

Continue

Cost: \$250.00

Program(s): Solid Waste

Attribute(s):

- Certification Credit Type: Initial
- CEU: 0.8
- Solid Waste Spotter Initial : 8.0
- Solid Waste I II III/C&D: 8.0
- Solid Waste Spotter: 8.0
- Solid Waste TS/MRF: 8.0
- SWANA CEU: 3.0

Coordinator: Dawn Jenkins, tel: (352) 392-9570 x127

Description:

Spotters play a key role in keeping prohibited materials out of landfills, C&D debris sites, transfer stations and MRF's. This course addresses the regulations that are relevant to the spotter and explains which materials are acceptable at these various sites. Topics include stormwater systems, application and maintenance of cover materials, inspections and litter control, typical waste composition, prohibited materials, load inspections, emergency and non-emergency response. This course is approved as an initial course for all Spotters.

AGENDA

8:00am	Solid Waste Management Overview Waste Processing Facilities: Overview Transfer Stations Materials Recovery Facilities [MRFs] Operating Requirements Managing Prohibited Materials Classifications of Landfills Basics of Landfill Designs
10:00 am	Break
10:15 am	Waste Acceptability and Screening Responsibilities of Waste Screening Spotter / Scalehouse Attendant / Equipment Operator

Hazardous Waste Generators
Biomedical Waste / Mercury Containing Devices
Tires / Batteries

12:00 - 1:00 pm Lunch (On Your Own)

1:00 Special Waste
Demolition Debris
Asbestos Management

Radioactive Materials / CRTs
Litter Control
Operational Requirements
Recovered Screen Materials

3:00pm Break

3:15 pm Cover Requirements
Cell Construction
Wet Weather
Temporary Access Roads
Employee Health and Safety
Traffic and Equipment Safety
Landfill Fires

5:00pm Adjourn

Participant must be present for entire class time to receive CEU and Certificate of Attendance

COURSE INSTRUCTOR

Chris Kohl
Kohl Consulting, Inc.

TREEO Center • Division of Continuing Education • University of Florida

3900 SW 63rd Blvd.
Gainesville, FL 32608

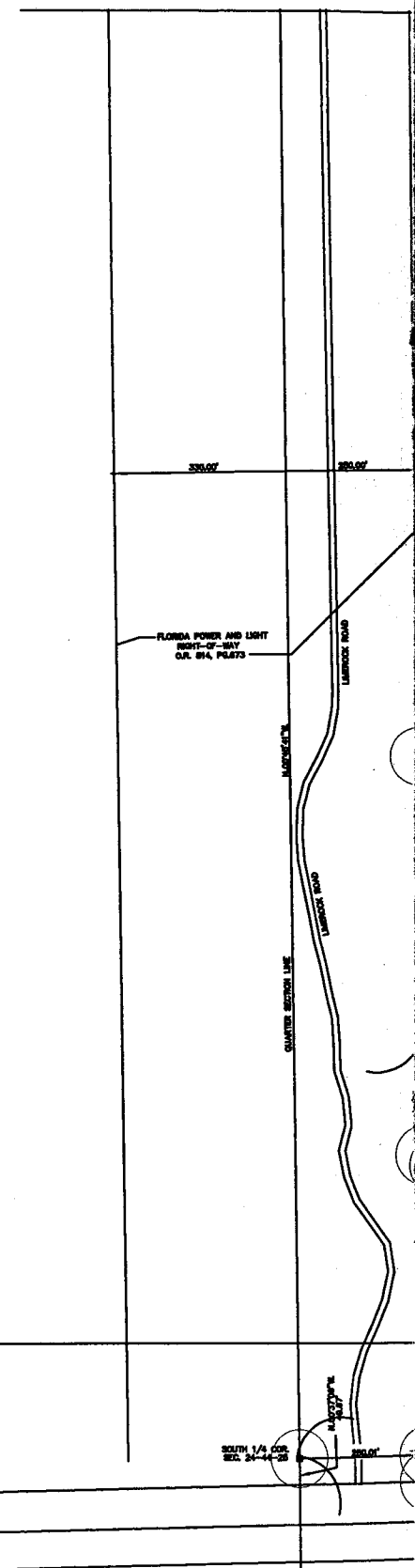
tel: (352) 392-9570
fax: (352) 392-6910

train@treeo.doce.ufl.edu



**APPENDIX 1
SWERF PROPERTY LAYOUT**

DRAFT



SYMBOLS

⊙	DENOTES FOUND REBAR & CAP L.B. 3664
✖	BARBED WIRE FENCE AS SCALED FROM SURVEY
■	DENOTES FOUND CONCRETE MONUMENT L.B. 3664
□	DENOTES FOUND CONCRETE MONUMENT

T.	TOWNSHIP
R.	RANGE
LB	LICENSED BUSINESS
(C)	CALCULATED
(S)	DIMENSION AS SHOWN ON SURVEY
(F)	FLAT
FD	FOUND
CR	CORNER
S.R.	STATE ROAD
MON	MONUMENT
ELEV.	ELEVATION
M.W.	MONITORING WELL

1. ELEVATIONS SHOWN OF ANY) ARE BASED ON NATIONAL GEODETIC VERTICAL DATUM. OLEV.D IS US GEOLOGICAL SURVEY BENCHMARK "SI VTN 1552" SURVEYOR'S NOTES
2. SURVEY BASED ON FOUND MONUMENTATION AS ESTABLISHED BY OTHERS. REFERENCE IS MADE TO A BOUNDARY SURVEY OF PART OF SECTIONS 24 AND 25, TOWNSHIP 44 SOUTH, RANGE 25 EAST, PERFORMED BY AGNOLL, BARBER & BRUNDAGE, INC. AND DATED JUNE 22, 1990.
3. BOUNDARY INFORMATION IS SHOWN FOR REFERENCE ONLY. REIFICATION OF PREVIOUS BOUNDARY SURVEY BY AGNOLL, BARBER & BRUNDAGE, INC. NOT INCLUDED UNDER THIS SURVEY.

[illegible]

DES	_____
DVN	CCT
CCT	_____

LEE C
DEPARTMENT OF SOLID
TRANSFER
FORT MYER

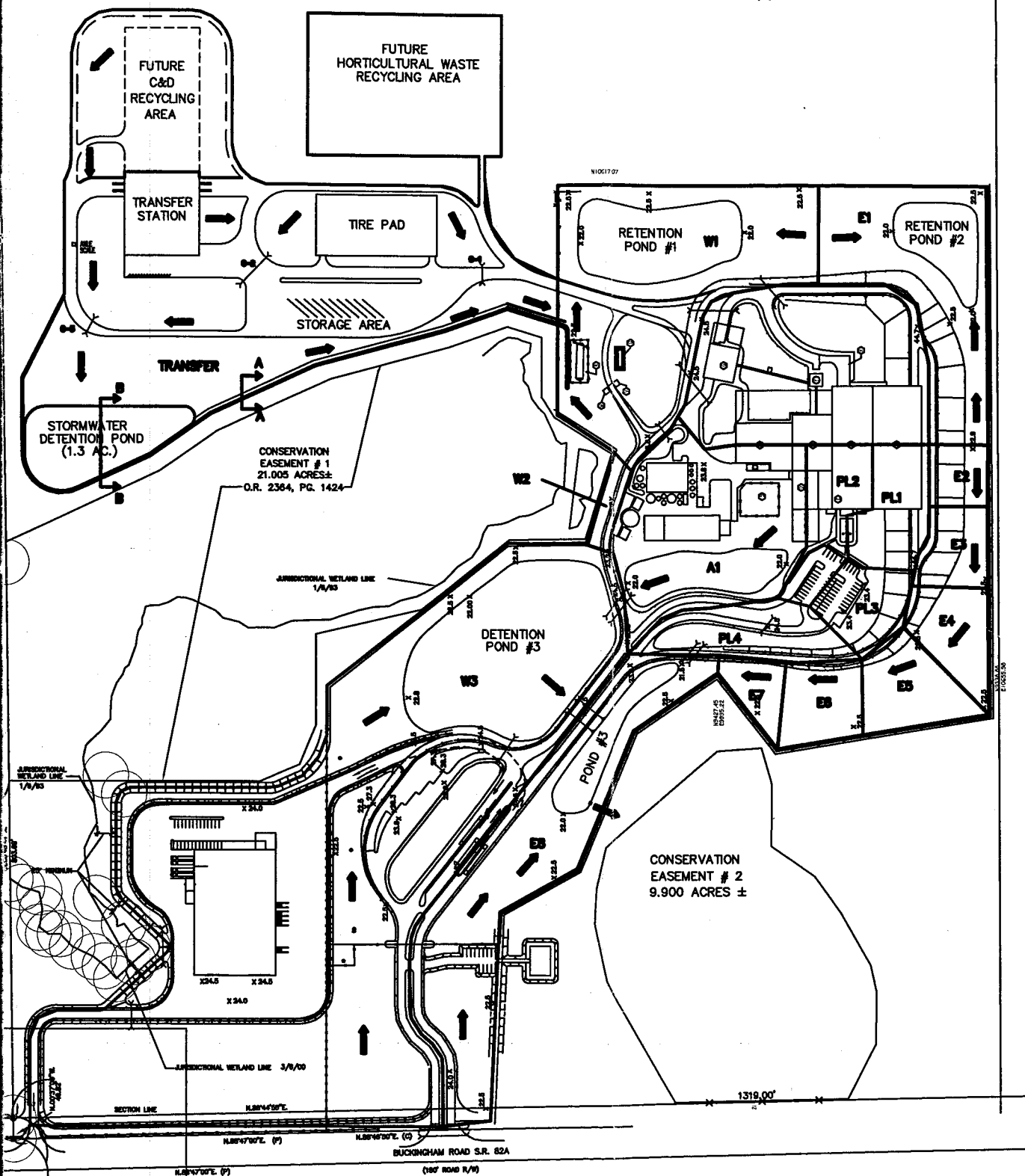
MALCOLM PIRNIC

1071.59' (S)
1071.67' (C)

N.89°08'58"E.

2333.17'

1261.58' (S)
1261.67' (C)



COUNTY
WASTE MANAGEMENT
STATION
RS, FLORIDA

BASIN BOUNDARY INFORMATION
SCALE: 1" = 200'

COPYRIGHT ©
MALCOLM PIRNIE, INC.
DATE 06-25-2002
SHEET 1 OF 1
CAD REF. NO. 1971034