



WASTE MANAGEMENT INC. OF FLORIDA

VistaLandfill

242 West Keene Road

Apopka, Florida 32703

(352) 368-1890

August 17, 2017

Laxsamee Levin
Florida Department of Environmental Protection
Central District Solid Waste Section
3319 Maguire Boulevard, Suite 323
Orlando, FL 32803

Subject: Vista Landfill
Quarterly Methane Probe Monitoring Report

Dear Mrs. Levin

Per section E.5. of the permit 0165969-027-SO-MM, enclosed is the methane monitoring report for the 3rd quarter of 2017. Please contact me at (904) 748-6006 or eparker1@wm.com if you have any questions or need additional information regarding this submittal.

Respectfully Submitted,

A handwritten signature in black ink, reading 'Eric Parker'.

Eric Parker
Environmental Protection Manager
Waste Management Inc. of Florida

cc: Deborah Perez, Waste Management
Craig Pelton, Waste Management

**VISTA LANDFILL
QUARTERLY LANDFILL GAS MONITORING AND ACTIVITIES REPORT
3rd QUARTER 2017**

SIGNIFICANT ACTIVITIES

- Routine perimeter gas monitoring occurred on August 8, 2017.
- No objectionable odors or gas migration issues were noted.

GAS MONITORING RESULTS

Date Monitored: August 8, 2017
 Analyst: Min Chun
 Gas Instrument Type: GEM 2000; Serial No: GM11101
 Calibration Acceptable: Yes; Span Gas 15% volume, response 15.0%, adjusted 15.0%
 Weather Conditions: 97°F, Partly Cloudy Skies, Winds SE 0 Mph
 Barometric Pressure: 29.79" Hg
 Precipitation: None

MON. POINT	DATE/TIME	METHANE (% by Vol. air)	METHANE (% LEL)	COMMENTS
MM-01	8/8/2017 14:04	0.0	0.0	
MM-02	8/8/2017 14:07	0.0	0.0	
MM-03	8/8/2017 14:09	0.0	0.0	
MM-04	8/8/2017 14:15	0.0	0.0	
MM-05	8/8/2017 14:18	0.0	0.0	
MM-06	8/8/2017 14:20	0.0	0.0	
MM-07	8/8/2017 14:23	0.0	0.0	
MM-08	8/8/2017 14:27	0.0	0.0	
MM-19	8/8/2017 14:32	0.0	0.0	
MM-20	8/8/2017 13:42	0.0	0.0	
MM-21	8/8/2017 13:48	0.0	0.0	
MM-22	8/8/2017 13:51	0.0	0.0	
MM-23	8/8/2017 13:53	0.0	0.0	
MM-24	8/8/2017 13:57	0.0	0.0	
MM-25	8/8/2017 13:59	0.0	0.0	
Office	8/8/2017 13:36	0.0	0.0	
Scales	8/8/2017 14:38	0.0	0.0	

Comments: MM - are permanent probes.



CARLSON ENVIRONMENTAL CONSULTANTS, PC

LANDFILL GAS AND SOLID WASTE SPECIALISTS

GEM 2000 GAS CALIBRATION LOG

Site: Vista Landfill

Date: 8-08-2017

Project: Vista

Log Prepared By: Min Chun

Gas Composition Meter Calibration

Instrument: GEM 2000 Instrument ID/Serial Number: 11101

Calibration Gas Expiration Date & Lot # (CH₄, CO₂, N₂): 05/2019 / #424839

Methane Calibration

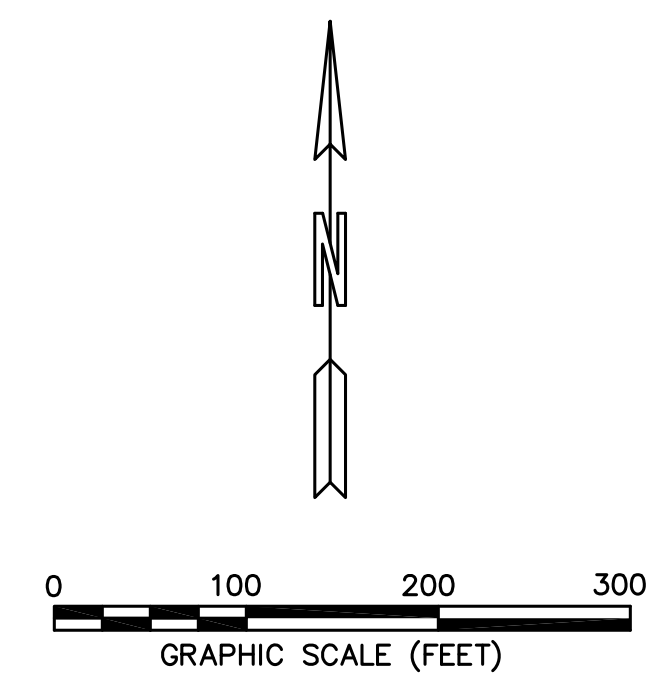
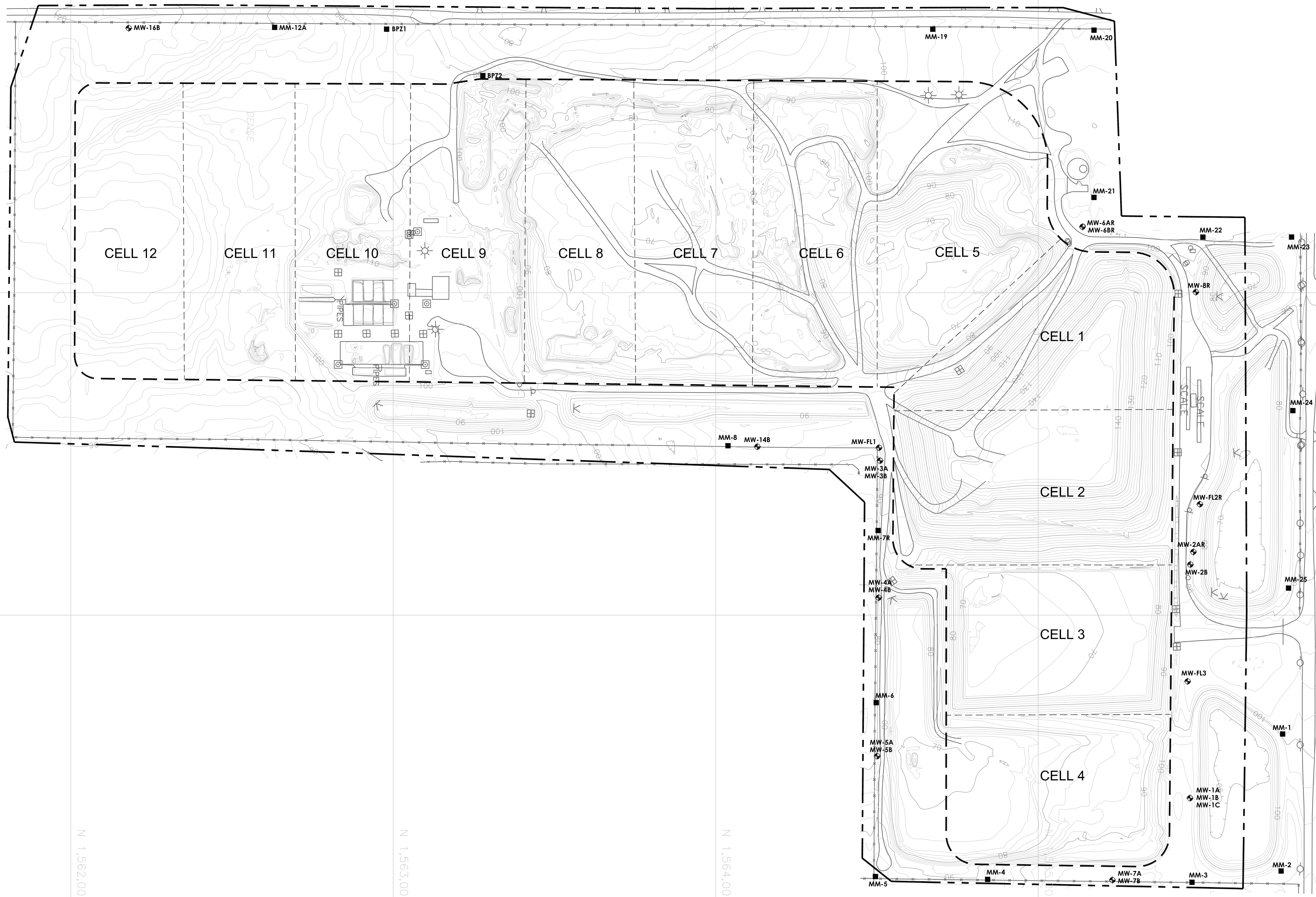
O₂, N₂ (Zero Gas)		CH₄ Gas		
Certified Gas %	Reading %	Certified Gas %	Init. Reading %	After Calibration Reading %
0.0	0.0	15.0	15.0	15.0

Carbon Dioxide Calibration

O₂, N₂ (Zero Gas)		CO₂ Gas		
Certified Gas %	Reading %	Certified Gas %	Init. Reading %	After Calibration Reading %
0.0	0.0	15.0	14.9	15.0

Oxygen Calibration

CH₄ (Zero)		Air		
Certified Gas %	Reading %	Air Oxygen Concentration %	Init. Reading %	After Calibration Reading %
0.0	0.0	20.9	20.6	20.9



LEGEND

- PROPERTY BOUNDARY
- .-.- PERMITTED LIMITS OF WASTE
- 10-FOOT CONTOUR LINE
- 2-FOOT CONTOUR LINE
- CELL BOUNDARY
- MM-6 METHANE MONITORING PROBE
- ⊕ MW-5B GROUNDWATER MONITORING WELL

NOTES
 1. AERIAL TOPOGRAPHY COMPILED BY PICKETT AND ASSOCIATES, INC. FROM AERIAL PHOTOGRAPH FLOWN ON JANUARY 14, 2013.

FOR INFORMATIONAL PURPOSES ONLY