

4014 NORTH WEST 13<sup>th</sup> STREET  
GAINESVILLE, FL 32609-1923  
[www.kooglerassociates.com](http://www.kooglerassociates.com)  
352.377.5822

*Sent via email: Johnny.Vega@miamidade.gov*

Johnny Vega, P.E.  
Miami-Dade County Regulatory and Economic Resources  
701 NW 1<sup>st</sup> Court, 7<sup>th</sup> Floor  
Miami, FL 33136-3912

RE: Response to Request for Additional Information  
Titan Florida LLA – Pennsuco Waste Tire Permit Renewal Application  
FDEP Project No. 0314354-002-WT  
WACS No. 100946  
DERM File No. SW-1289

Dear Mr. Vegak:

On behalf of Titan Florida LLC, (Titan), Koogler and Associates, Inc. (Koogler) is responding to the request for additional information dated December 15, 2017. The RAI items request (abbreviated) with our responses are as follows:

1. "In accordance with Rule 62-701.320(7)(f)(2), F.A.C., facility plans (e.g., Figure 3 – Plot Plan, etc.) shall be signed, sealed and dated by the certifying professional engineer".

**RESPONSE: The signed, sealed and dated Figure 3 – Plot Plan is attached.**

2. "Pursuant to the requirement outlined in Part III.....If storage of waste tires is expected to be done in different areas of the site, the general location of all such areas shall be identified on the plan".

**RESPONSE: A revised Figure 3 – Plot Plan is attached depicting the general location of the storage of tires in enclosed trailers.**

3. "Pursuant to the requirements outlined in art III, sub-item B, of the referenced DEP Form, please note that following comments:

(a) Verbiage under Section 2.0 of the submitted Plant of Operations differs from the throughput estimates provided in Section 4.0 of the Plan...".

**RESPONSE: Section 2.0 of the Plan of Operations has been revised to show that the maximum number of tires to be stored at any one time is 300 tons and that the daily throughput rate is 96 tons of tires per day. The revised Plan of Operations is enclosed.**

(b) "In regards to the submitted emergency response manual, the following comments shall be addressed:

(i) The RER-DERM 24-hr response line (305) 372-6955) shall be included in the list of agencies to be contacted in case of an emergency.

(ii) The plan shall clearly address the provisions of Rules 62-711.540(1)(e)2 and 3, F.A.C."

**RESPONSE: The Emergency Response Manual has been updated to include the RER-DERM 24-hr response line as requested, and the information to specifically address Rule 62-711.540(1)(e)2 and 3 is provided in the form of an Addendum, attached.**

4. "The contingency plan requirements of Rule 62-701.320(16), F.A.C., shall be address in the application package..."

**RESPONSE: The Emergency Response Manual has been updated to include an Addendum to specifically address Rules 62-701.320(16) and 62-711.540(1)(e).**

We trust this response provides the information necessary to proceed with permit issuance. If you have any questions or require further information, please contact me at 352-377-5822 ext. 27 or [treed@kooglerassociates.com](mailto:treed@kooglerassociates.com).

Best regards,

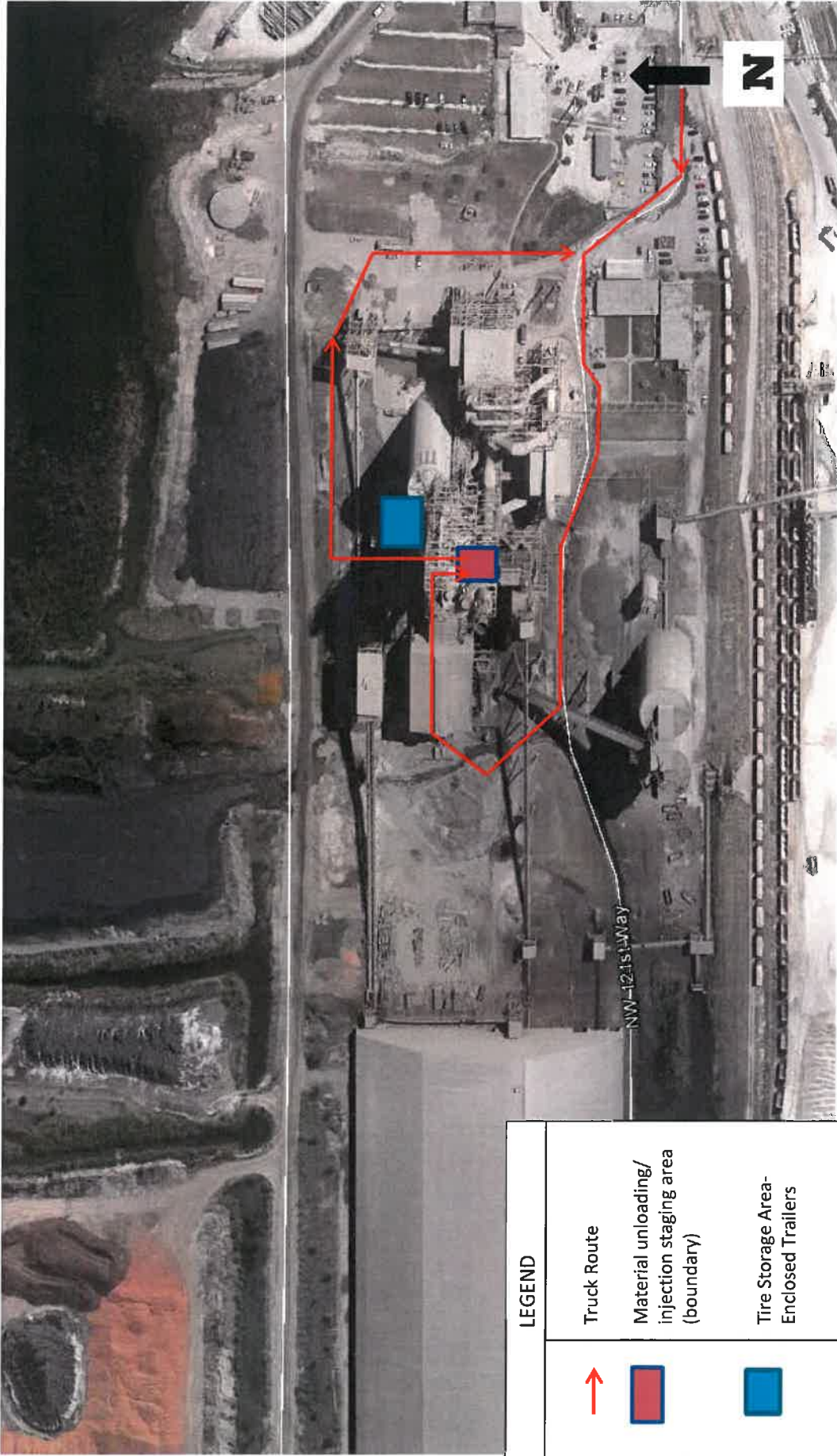


Tammy L. Reed  
Environmental Scientist II  
KOOGLER AND ASSOCIATES, INC.

tlr

Enclosures

cc: William Kissel – Titan Florida LLC (*email*)  
Maxwell R. Lee, Ph.D., P.E. (*email*)



LEGEND	
	Truck Route
	Material unloading/ injection staging area (boundary)
	Tire Storage Area- Enclosed Trailers

Professional Engineer Certification  
 License No. 58091  
 Date 1/2/18  
 Maxwell R. Egge, Ph.D., PE  
 State of Florida  
 Professional Engineer

Scale 1" = 200'  
 Aerial from Google earth  
 Image date 03/21/2017  
 Drawing No. 654-17-11

**Figure 3 – Plot Plan**  
 Tire Processing Permit WT13-0314354-001  
 Titan America, LLC–Pennuoco Complex  
 11000 NW 121 Way  
 Medley, Miami-Dade County, FL

**KOOGLER & ASSOCIATES**  
 ENVIRONMENTAL SERVICES  
 4014 NW THIRTEENTH STREET  
 GAINESVILLE, FLORIDA 32609  
 352/377-5822 • FAX 377-7158

## **PLAN OF OPERATIONS**

WHOLE TIRE PROCESSING FACILITY – PERMIT RENEWAL APPLICATION  
PER 62-711, F.A.C.

### **TITAN AMERICA – PENNSUCO COMPLEX**

11000 NW 121 Way  
Medley, Miami-Dade County, FL 33198

Renewal of WT13-0314354-001

WACS #100946

Application Date: November 13, 2017

#### ***Consultant:***

Maxwell R. Lee, Ph.D., P.E.  
Tammy Reed, Environmental Scientist II  
Koogler and Associates, Inc.  
4014 NW 13th Street  
Gainesville, Florida 32609-1923  
(352) 377-5822

## TABLE OF CONTENTS

1.0	FACILITY OPERATION .....	1
2.0	EQUIPMENT DESCRIPTION .....	2
	Figure 1. Whole Tire Chute into the Base of the Preheater Tower .....	2
3.0	WASTES FROM PROCESS .....	3
4.0	PROCESS THROUGHPUT .....	3
5.0	STORAGE REQUIREMENTS.....	3
6.0	EMERGENCY PREPAREDNESS MANUAL.....	4
7.0	FIRE SAFETY SURVEY .....	4
8.0	DISPOSAL/RECYCLING PRACTICES.....	4

## INTRODUCTION

This Plan is submitted as part of the application for renewal of this Solid Waste Tire Processing permit under rule 62-711, FAC specifically per 62-711.530(6) using Form 62-701.900(23). The enclosed information is provided per 62-711 permit application requirements as reference in the FDEP rules. Unlike solid waste facilities under 62-701, FAC, Waste Tire Processing (WTP) facilities are not required to submit Operation plans and Contingency plans per 62-701.710(2)(e) and (g), FAC.. The information provided below is of a similar nature and structure of Operations and Contingency Plans under 62-701, FAC.

The WTP permit application forms list the required specific information of operations shown below. Item 6. addresses contingencies and emergencies through an Emergency Preparedness Manual.

### **Facility operation.**

1. *A description of the facility's operation, process and products including how waste tires will be received and stored.*
2. *A description of the equipment used for processing tires. This description shall include the make, model, and hourly capacity of each piece of equipment.*
3. *Description of the waste from the process, the amount of waste expected and how and where this waste will be disposed of.*
4. *Statement of the maximum daily throughput and the planned daily and annual throughput.*
5. *A description of how the operator will maintain compliance with each of the storage requirements of Rule 62-711.540, F.A.C.*
6. *A copy of the emergency preparedness manual for the facility with a statement of the on-site and off-site locations where that manual will be maintained.*
7. *A copy of the fire safety survey*
8. *A description of how 75% of the annual accumulation of waste tires will be removed for disposal or recycling.*

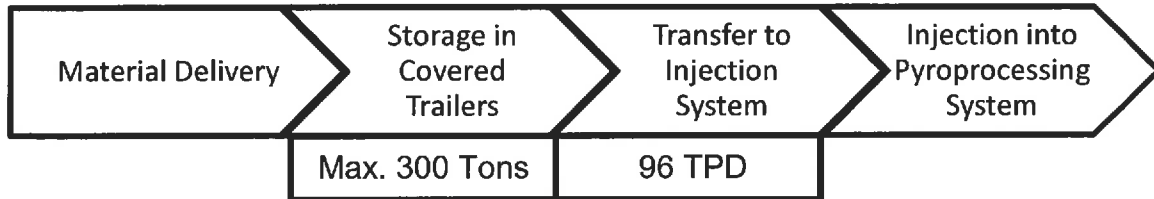
## 1.0 FACILITY OPERATION

***A description of the facility's operation, process and products including how waste tires will be received and stored.***

Covered or enclosed trailers are used to deliver and store whole tires. When tires are to be used in the pyroprocessing process, tires will be transported from the covered or

enclosed trailers to the designated injection system via a roller cart and utilized in the pyroprocessing system at a controlled rate of injection.

The flow of tires from delivery to use will be as follows:



Titan America personnel working with the tire system will receive training on the proper operation of the system. This will include, but is not limited to, training on safety interlocks, location of all emergency stops, location of electrical disconnects and how to unplug material from the system. In addition, the operators will receive fire safety training as part of employee training.

## 2.0 EQUIPMENT DESCRIPTION

***A description of the equipment used for processing tires. This description shall include the make, model, and hourly capacity of each piece of equipment.***

The whole tire injection system consists of a hand-fed chute that drops whole tires into the pyroprocessing system at the base of the preheater tower (see Figure 1 below). Whole tires will be fed at a rate in accordance with Titan America’s air permit or other limitation.



Figure 1. Whole Tire Chute into the Base of the Preheater Tower



### **3.0 WASTES FROM PROCESS**

***Description of the waste from the process, the amount of waste expected and how and where this waste will be disposed of.***

The whole tires used in the process serve as a fuel and raw material (ingredient), and because any ash from the process is also incorporated as an ingredient in the final product there is no solid waste generated from this process.

### **4.0 PROCESS THROUGHPUT**

***Statement of the maximum daily throughput and the planned daily and annual throughput.***

- The maximum storage on-site at any time will be 300 tons.
- The maximum daily throughput will be in accordance with other permit limits, or the practical limitations of the kiln system, which is 96 tons per day.
- The planned daily throughput will be 96 tons per day.
- The planned annual throughput will be 35,040 tons per year.

### **5.0 STORAGE REQUIREMENTS**

***A description of how the operator will maintain compliance with each of the storage requirements of Rule 62-711.540, F.A.C.***

Due to the nature of this particular operation, many of the storage requirements in Rule 62-711.540, F.A.C., do not apply. This Tire Facility does not receive tires from the public and does not store tires in large piles. Tires are only hand-fed to the pyroprocessing system on an as-needed basis.

Open-flame activities will not be conducted within 25 feet of a tire pile. Local fire agencies will be notified of the Tire Facility (use of tires at the site as a fuel and ingredient) and a fire safety survey will be conducted annually, and included in the following quarterly report that is required per 62-711.530(5), F.A.C. to be submitted to the Department. In the case of a tire fire posing an unanticipated threat to the public or environment, the operator will immediately notify the Department and will submit a



written report to the Department per 62-711.540(1)(f) describing the origin of the emergency, actions that were taken to deal with the emergency, results of those actions, and an analysis of the success or failure of those actions, to the Department within two weeks. Given the storage limit amount of tires (300 tons), the potential for such tire fires is limited.

Per the requirements of 62-711.540(1)(i) - communication equipment (i.e., a phone) required to notify local fire protection authorities will be maintained.

A record of the quantity of tires received and stored at the Tire Facility will be maintained. Mosquito and rodent control will be provided as necessary.

## **6.0 EMERGENCY PREPAREDNESS MANUAL**

***A copy of the emergency preparedness manual for the facility with a statement of the on site and off site locations where that manual will be maintained.***

A copy of the Emergency Preparedness Manual (aka Emergency Response Plan) will be maintained on site (see Appendix C of the renewal application package).

## **7.0 FIRE SAFETY SURVEY**

***A copy of the fire safety survey.***

A copy of the most recent Fire Safety Survey is included in Appendix D of the renewal application package.

## **8.0 DISPOSAL/RECYCLING PRACTICES**

***A description of how 75% of the annual accumulation of waste tires will be removed for disposal or recycling.***

In this cement production operation, 100% of the tires will be used on-site as supplemental fuel and ingredient in the production of cement. The kiln under normal operation consumes about 1 to 3 tph of tires. Kilns are designed to operate 24/7. Thus when tires are fed to the kiln, the rate of consumption is such that at a minimum 24 tons

per day are consumed. Under the minimal rate of 1 tph consumed and the limit of 300 tons of storage allowed 300 tons of tires (total allowed storage) will be consumed within

less than one month or 12 turnovers of total storage per year is not uncommon when tires are available. Tires are an excellent fuel source replacement for fossil fuels, typically coal or pet coke. If financial market conditions are right for tires to be used as a fuel, the tires are quickly consumed. There is no economic incentive to not use the tires for fuel. Thus, the Agency has assurance by more than environmental regulation requirements that the tires will not be accumulated by more than 75% on an annual basis.

## EMERGENCY RESPONSE PLAN



Facility Name: Pennsuco Cement Designated Responsible Official: Kostas Nikolaou (305) 796-3001  
Facility Address: 11000 NW 121 Way, Medley, FL 33178 Emergency Coordinator: Vanessa Rodriguez (305) 609-6663  
Facility Phone: 305-364-2200 DATE PREPARED: June 2016

### Purpose

Our organizational values dictate that Titan America provide for the protection of life, health, and property during emergencies. This guide aims to provide quick and simple guidance during emergencies until professional help is obtained. Everyone is expected to read, understand, and carry out the steps in this guide during emergencies.

### Notice

When appropriate, there may be deviations from the steps in this guide due to changes in personnel, policies, interpretation, law, and experimentation with alternative processes, or simply evolution of the process itself. Everyone is encouraged to review this guide and suggest changes to keep it current and minimize differences between the guide and actual practices. This guide may be updated at any time and will reflect a "revised" date on the affected tab(s). Your personal action and safety are your responsibility.

**EMERGENCY RESPONSE PLAN**

The Designated Responsible Official or Emergency Coordinator may ask these persons to remain on site to perform critical assignments during emergencies:

Name	Work area	Job title	Assignment description	Phone number
Kostas Nikolaou	Plant-wide	Plant Manager	Production Support	305-796-3001
Sam Ricketts	Plant-wide	Pyro Manager	Production Support	786-295-0568
Elvis Rijo	Plant-wide	Finishing Manager	Production Support	305-785-6920
Kris Menon	Plant-wide	Electrical Engineer	Electrical Support	786-299-3142
Matthew Harris	Plant-wide	Reliability Manager	Mechanical Support	270-366-4705
Alfredo De La Cadena	Plant-wide	Security Manager	Emergency/Security Support	305-764-5447
Vanessa Rodriguez	Plant-wide	Safety Manager	Safety Support	305-609-6663

If the listed persons are unable to remain at their work area, the Designated Responsible Official or Emergency Coordinator must notify these offices for support:

Name and Location: Cement Control Room (PenK5) - Kamari Building  
Phone Number: (305) 200-1642

Name and Location: Security Guardhouse - 121st Way  
Phone Number: (305) 556-3809

**EMERGENCY RESPONSE PLAN**



Emergency Numbers	Utility Numbers	Personnel Numbers
Fire Department: 911	Electric Company: 800-226-3545 (FPL)	Designated Responsible Official: 305-796-3001 (Kostas Nicolaou)
Paramedics: 911	Gas Company: 305-691-8710 (Florida City Gas)	Emergency Coordinator: 305-609-6663 (Vanessa Rodriguez)
Ambulance: 911	Water Company: 305-592-5680 (South Florida WMD)	Assistant to Physically Challenged (if applicable): TITAN Security Department
Police: 911	Telephone Company: 305-347-5313 (AT&T)	Additional Assistants (if applicable):
TITAN Security: 305-556-3809	Comments:	
Building Manager (if applicable):		



### Evacuation Routes

Know the evacuation route in your work area:

- Primary and secondary evacuation routes
- Emergency exit locations
- Fire extinguisher locations
- Fire alarm pull station locations
- Employee assembly areas

### Evacuation Guidelines

- Evacuate immediately when an evacuation notice is given (siren, hand-signal, 2 way-radio transmit, phone call or other)
- Evacuate quietly and **do not use the elevator!**
- Evacuate via the nearest emergency exit and stairs (walk down the right side of stairs and maintain one hand on the handrail)
- Account for everyone at each employee assembly area
- Move to a different employee assembly area at the request of emergency personnel

## EMERGENCY RESPONSE PLAN



### FIRST STEP

Call the appropriate emergency number(s):

- Fire Department (911)
- Paramedics (911)
- Ambulance (911)
- Police (911)

Provide the following:

- Description of emergency
- Location of emergency (address, building number, etc)
- Your name and direct phone number

### SECOND STEP

Do not move the person unless necessary and call the following emergency personnel for assistance:

- Name: TITAN Security Phone: 305-556-3809

### THIRD STEP

Provide the following assistance, at a minimum, if the listed emergency personnel are unavailable:

- Apply firm pressure on the wound(s) to stop any bleeding\*
- Use the Heimlich Maneuver to clear the air passages if the person is choking\*

### NOTE

- Provide first aid and CPR **ONLY IF** you are qualified
- Avoid contact with blood and other bodily fluids. Wear disposable latex, vinyl or nitrile gloves
- Dispose of biohazards properly
- Review the appropriate safety data sheet (SDS) and wear the required personal protective equipment (PPE) when exposed to hazardous materials



## EMERGENCY RESPONSE PLAN



### FIRST STEP

- Activate the nearest fire alarm (if possible)
- Notify the fire department (911)  
*Provide description and location of fire, your name and direct phone number*
- Tell everyone to evacuate immediately (air horn, radio, phone, etc.)\*

### LAST STEP

Fight the fire **ONLY IF**:

- The fire is small and can be controlled with a fire extinguisher
- The fire extinguisher is working and you are qualified to use it
- Escaping the work area is possible by backing up to the nearest exit

### Fire Guidelines

- Do not open doors that have a hot doorjamb or handle
- Stay low (close to the ground) if smoke is encountered
- Do not return to the work area until the Designated Responsible Official announces it is ok

### NOTE

- Follow guidelines on tab 4

## EMERGENCY RESPONSE PLAN



### Large Chemical Spill

- Notify TITAN Security 305-556-3809 and the Designated Responsible Official 305-345-6741
- Secure the area (caution tape or safety cones) and notify everyone (radio, phone, email, etc.)\*
- Contain the spill with containment equipment (absorbent powder, pads, etc.)
- Do not clean the spill unless you are qualified to do so
- Assist injured persons if necessary (follow guidelines on tab 5)
- Call the hazardous spill cleanup company to clean the spill

### Small Chemical Spill

- Notify TITAN Security 305-556-3809 and the supervisor of the work area
- Secure the area (caution tape or safety cones)
- Review and follow the general spill cleanup procedures
- Follow the instructions on the appropriate safety data sheet (SDS) and wear the required personal protective equipment (PPE) to clean the spill

### NOTE

- Evacuate the work area if necessary (follow guidelines on tab 4)

### Spill Assistance

Hazardous spill cleanup company:

- Name: SWS First Response
- Phone: (800) 852-8878

Location of spill assistance items:

- Safety Data Sheets (SDS):  
Warehouse
- Personal Protective Equipment (PPE):  
Warehouse
- Spill Containment Equipment:  
Warehouse

## EMERGENCY RESPONSE PLAN



### Hurricane and Tornado

- Seek shelter made of reinforced concrete, brick or block
- Use your arms to protect your head and neck
- Stay away from doors, windows, and outer walls
- Remain at one of the following until the Designated Responsible Official announces the threat is over:
  - Small rooms on the lowest floor
  - Hallways on the lowest floor

### Indoor Flood

- Evacuate immediately when an evacuation notice is given (follow guidelines on tab 4)

### Outdoor Flood

- Do not walk or drive through flood water
- Climb to high ground and stay there (must do immediately if your car stalls)

### Hurricane Watch Guidelines

- Wait for instructions from the Designated Responsible Official
- Monitor your local TV and radio station for instructions, while collecting drinking water in appropriate containers
- Secure the facility if an evacuation notice has not been given (move loose items indoor, board up windows and openings, tie up boats, etc.)

### Hurricane Warning Guidelines

- Evacuate immediately from low-lying areas and coastal areas at the request of public officials or the Designated Responsible Official
- Evacuate immediately from areas that may be affected by storm tides or stream flooding

## EMERGENCY RESPONSE PLAN



### BE CALM, BE COURTEOUS, LISTEN, AND DO NOT INTERRUPT THE CALLER

#### BEFORE the caller hangs up

- 1) Keep the caller talking if possible. Pretend difficulty hearing and ask the caller to repeat the message.
- 2) Obtain the following if the caller appears to agree to conversation (write in the space provided below):
  - When will it go off?
  - Where is it located?
  - What kind of bomb?
  - What kind of package?
  - What is your name and address?
  - How do you know so much about the bomb?

Write the message and any other comments:

#### AFTER the caller hangs up

- 1) Activate a malicious call trace:
  - Hang up and do not answer another line
  - Choose the same line and dial \*57
  - Listen to the confirmation announcement and hang up
- 2) Call TITAN Security (305) 556-3809 and provide the following:
  - The message and any other comments
  - Whether the caller appeared familiar with the plant or building (by location of the bomb)
- 3) Complete part 2 of this tab (tab 10) and give to TITAN Security

#### Bomb Threat Guidelines

- **Treat all threats seriously**
- Do not touch, cover, or move any suspicious item (device, package, box, mail, etc.)
- Do not use a cell phone or radio, these could set off the bomb; always use a landline
- Do not return to the work area until the Designated Responsible Official announces it is ok, if everyone has been evacuated

### EMERGENCY RESPONSE PLAN



Your Name: \_\_\_\_\_

Date: \_\_\_\_\_

Time: \_\_\_\_\_

**CALLER IDENTITY** SEX: Male  Female  **CATEGORY:** Adult  Juvenile  **APPROXIMATE AGE:** \_\_\_\_\_

**CALL SOURCE** Local  Long Distance  Telephone Booth

**VOICE**

- Loud
- High Pitch
- Raspy
- Intoxicated
- Soft
- Deep
- Pleasant
- Other:

**SPEECH**

- Fast
- Distinct
- Stutter
- Slurred
- Slow
- Distorted
- Nasal
- Other:

**LANGUAGE**

- Excellent
- Fair
- Foul
- Good
- Poor
- Other:

**ACCENT**

- Local
- Foreign
- Race
- Not Local
- Region

**MANNER**

- Calm
- Rational
- Coherent
- Deliberate
- Righteous
- Angry
- Irrational
- Incoherent
- Emotional
- Laughing

**BACKGROUND**

- Factory
- Machines
- Office
- Street
- Traffic
- Atmosphere
- Airplanes
- Trains
- Animals
- Party
- Music
- Voices
- Quiet

## EMERGENCY RESPONSE PLAN



### When violence or threat of violence occurs

- Leave immediately if possible; If not possible, lock yourself in a secure area (office, bathroom, etc)
- Call 911 or TITAN Security at 305-556-3809

### Examples of violence and threat of violence

- Conduct such as pushing, shoving, or striking that harms or has the potential to harm people or property
- Oral or written statements, gestures, or expressions that communicate a direct or indirect threat of harm

### Violence Prevention Guidelines

- Stay aware of your immediate work environment
- Notify your supervisor when unusual or suspicious behavior is noticed
- Do not hesitate to contact TITAN security or the police for help
- Consult with your supervisor, TITAN security, or human resources for guidance in dealing with violence

## EMERGENCY RESPONSE PLAN



### When suspicious mail or package are received

- Do not open the envelope or package
- Isolate the envelope or package and evacuate if necessary (follow guidelines on tab 4)
- Notify the Designated Responsible Official 305-345-6741

### Characteristics of suspicious mail and package

- Contain timers or emit noises
- Contain powders or liquids
- Have no return address
- Have an unusual shape or weight for their size
- Have protruding wires, strange odors, or stains
- Have excessive or foreign postage
- Have awkward wrapping (several types of tapes)
- Have a return address that does not match the postmark's city or state
- Have distorted handwriting, home-made labels, or cut and pasted letters
- Are addressed to former employees (six or more months)
- Have a job title (CEO, etc) but no name
- Have restricted classifications ("Private," "Confidential," etc) but no name
- Have urgent classifications ("Rush - Do Not Delay", etc) but no name



## EMERGENCY RESPONSE PLAN



At times, members of the press may want to obtain information when an emergency occurs. Our primary objective during an emergency is to protect the health and safety of our people by 1) securing the area to ensure the condition does not pose a threat to anyone and 2) carrying out the required notifications set forth in the section(s) of this guide relevant to the emergency.

### When the press calls

- Take the person's name and phone number, and state, "I will have our Media Spokesperson contact you."

### When the press arrives

- Have someone monitor entrance and ensure that unauthorized persons do not gain access to the property
- Take persons' names and phone numbers, and state, "There has been an emergency. We are making sure everyone is safe and are notifying the relevant parties. For more information, please contact our Communications Department."

### After interacting with the press

- Notify the Media Spokesperson via phone and email
- Provide persons' names and phone numbers, and any details



## APPENDIX A - CONTINGENCY AND EMERGENCY RESPONSE PLAN SUPPLEMENTAL INFORMATION

### FOR RENEWAL OF TIRE PROCESSING PERMIT WT13-0314354-001

#### EQUIPMENT AND COMMUNICATIONS

Fire-fighting equipment and materials shall be maintained on-site in good working condition in their designated locations. Equipment includes fire extinguishers, low permeability materials such as clay, front end loader or other hauler and impermeable (e.g., 5-mil) liners/covers. The locations of fire extinguishers are depicted on Figure 1 – attached.

Communication devices at the facility include cell phones, 2-way radios, air horns and alarms. These devices shall be kept in good working condition and in their designated location.

#### IN THE EVENT OF A FIRE

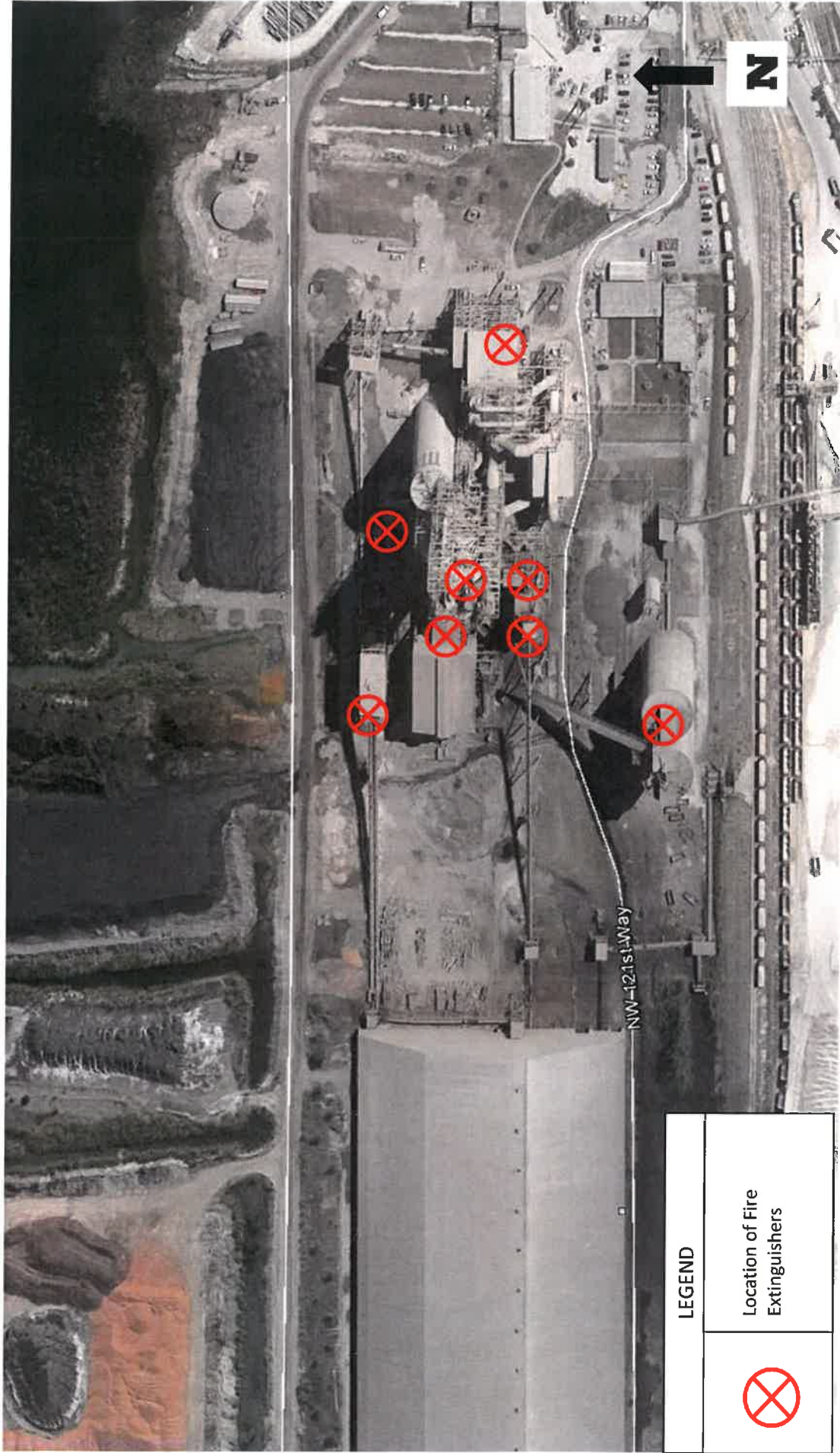
In the event of a fire at the Facility, the following procedures will be followed:

- Activate the nearest Fire Alarm (if possible)
- Notify the local fire department by dialing 911. Inform dispatcher of the type and quantity of material on fire (if known)
- Determination of the type of material on fire.
- Put out the fire if possible with an appropriate fire extinguisher.
- Secure the area. Contact the guard house and stop all inbound traffic, except for emergency vehicles. Keep all roadways and fire lanes clear and unobstructed.
- Disconnect all sources of electricity not necessary for firefighting activities.
- Isolate non-burning material from the fire. This may be achieved by moving tire trailers that are not burning to a location a minimum of 200 feet away from burning material. In the event that moving a trailer is unsafe, an on-site water truck will be used to prevent ignition.
- If the fire is within a stockpile or trailer, mobile equipment will be used to move the unburned tires away from burning material. Water is only to be used on tires or other material that is not burning.
- Maintain a stockpile of low permeability material such as clay, down gradient of the tire handling area. In the event of a fire in or around the tire handling area or tire trailer staging area, this material shall be moved by front-end loader or other hauler and placed down gradient of the fire in a windrow.
- Any oily runoff, spent fire-fighting water, or other liquids shall be contained and absorbed by this material. The resulting material shall then be properly disposed of in a manner consistent with its final designation, e.g., solid waste, hazardous waste, etc. Prior to disposal, the material shall be stored on an impervious liner and covered with a 5-mil plastic cover or equivalent liner and cover



to control rainwater infiltration and stormwater runoff.

- Cease accepting materials and/tires in the area(s) of the facility impacted by fire.
- Notify the appropriate local, state and/or federal agencies as applicable.
- Contact :
  - Miami-Dade County**
  - Department of Regulatory and Economic Resources**
  - 24 hr Response Line**
  - 305-372-6955**



**LEGEND**



Location of Fire Extinguishers

Scale 1" = 200'



*Aerial from Google earth  
Image date 03/21/2017*

*Drawing No. 654-17-11*

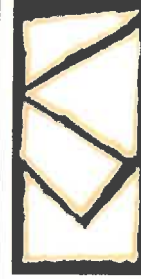
**Appendix A - Figure 1**

**Emergency Response Plan – Location of Fire Extinguishers**

**Titan America, LLC–Pennsuco Complex**

**11000 NW 121 Way**

**Medley, Miami-Dade County, FL**



**KOOGLER & ASSOCIATES**  
**ENVIRONMENTAL SERVICES**  
 4014 NW THIRTEENTH STREET  
 GAINESVILLE, FLORIDA 32609  
 352/377-5822 • FAX 377-7158