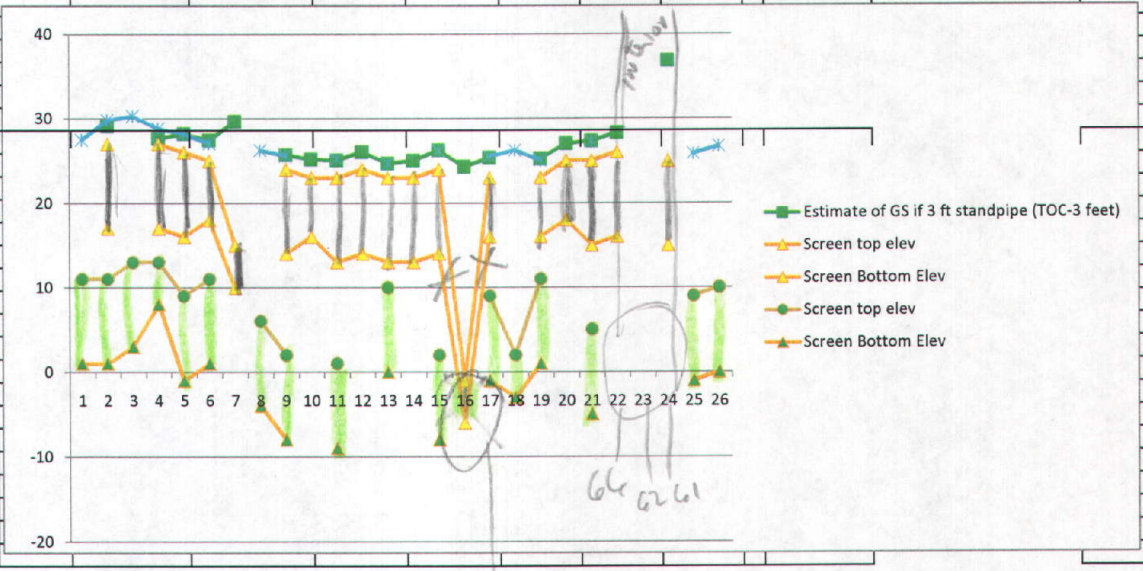


SS

Tonaka Screens 9/27/10

prepare for graph	Sort Geography Order 9 27-10	MPIS List GROUND WATER	Estimate of GS if 3 ft standpipe (TOC-3 feet)	Screen top elev	Screen Bottom Elev	of GS if 3 ft standpipe (TOC-3 feet)	Screen top elev	Screen Bottom Elev	MPIS List GROUND WATER		
	1	1				27.51	11	1			
	2	2	B33-2	29.1	27	17	29.82	11	1	B33-2	B33-1
	3	3				30.3	13	3	B6-2	B8-2	
	4	4	B11	27.63	27	17	28.81	13	8	B11	B-2
	5	5	B34-2	28.21	26	16	28.18	9	-1	B34-2	B34-1
	6	6	B63-2	27.42	25	18	27.06	11	1	B63-2	B63-1
	7	8	B-5	29.66	15	10			B-5		5
	8	9				26.27	8	-4	B36	B36	
	9	10	B37-2	25.72	24	14	25.59	2	-8	B37-2	B37-1
	10	11	B64	25.19	23	16			B64		64
	11	12	B38-2	25.08	23	13	25.22	1	-9	B38-2	B38-1
	12	13	B-39	26.06	24	14			B-39		39
	13	14	B40-2	24.68	23	13	24.64	10	0	B40-2	B40-1
	14	15	B65	25.04	23	13			B65		65
	15	16	B41-2	26.26	24	14	26.14	2	-8	B41-2	B41-1
	16	17	B1-B	24.31	21	-6			B1-B	IB	
	17	18	B42-2	25.36	23	16	25.5	9	-1	B42-2	B42-1
	18	19	MO5-B				26.24	2	-3	MO5-B	MO5-B
	19	20	B43-2	25.21	23	16	25.07	11	1	B43-2	B43-1
	20	21	B44	27.02	25	18			B44		44
	21	22	B45-2	27.31	25	15	27.24	5	-5	B45-2	B45-1
	22	23	B66	28.27	26	16			B66		66
	23	24	B62-2						B62-2	B62-1	
	24	25	B61R	36.82	25	15			B61R		61
	25	33				25.84	9	-1		B60	
	26	35				26.73	10	0		B68	



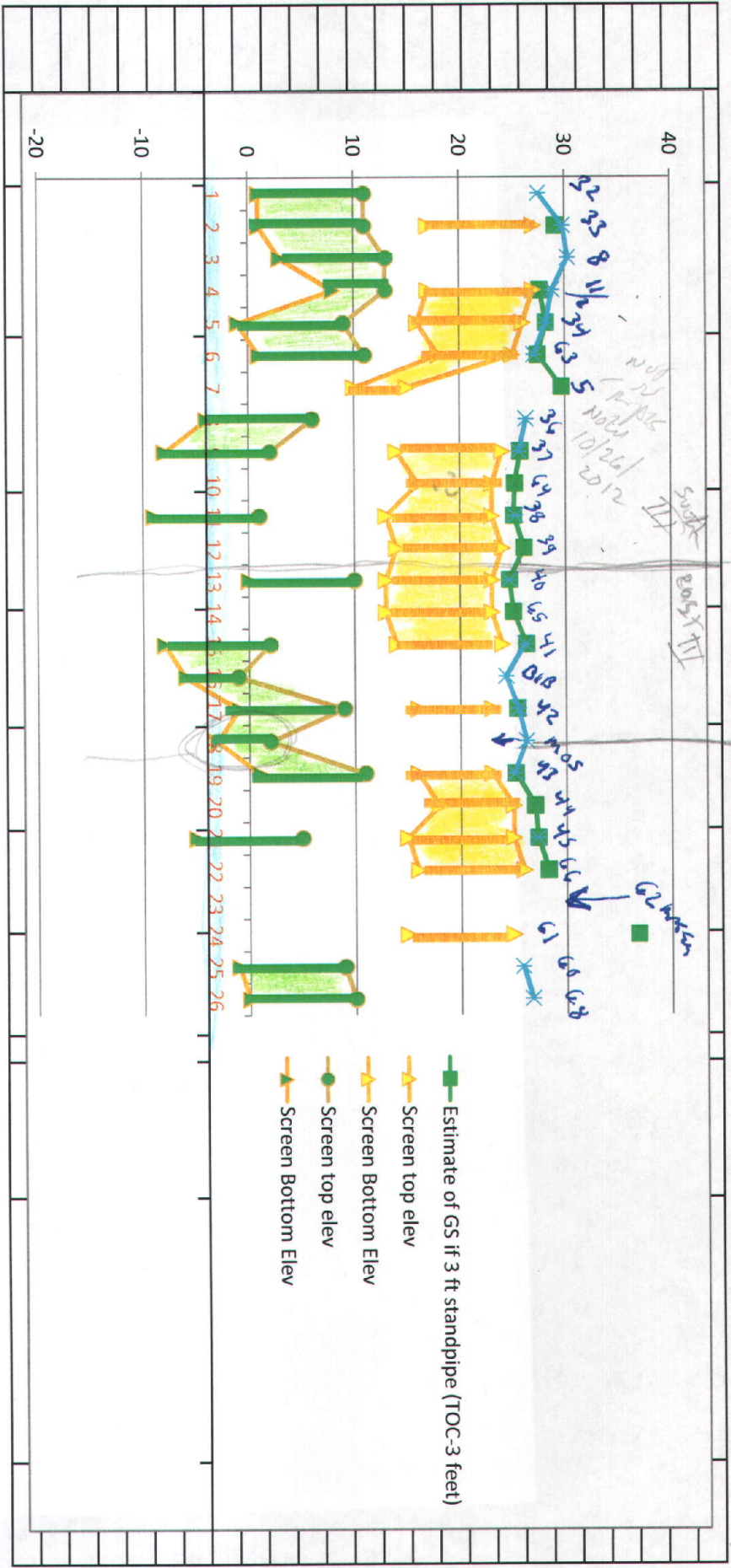
closed over low zone

Geosynthetic fabric

North III

11/20/12

with Screen Dept Chud 9/27/12



Screen  
Duplicas

x-axis	Sort Geogra phy Order 9-27-	MPIS List GROUND WATER
1	1	32
2	2	B33-2
3	3	8
4	4	B11
5	5	B34-2
6	6	B63-2
7	8	B-5
8	9	36
9	10	B37-2
10	11	B64
11	12	B38-2
12	13	B-39
13	14	B40-2
14	15	B65
15	16	B41-2
16	17	B1-B
17	18	B42-2
18	19	MO5-B
19	20	B43-2
20	21	B44
21	22	B45-2
22	23	B66
23	24	B62-2
24	25	B61R
25	33	60
26	35	68

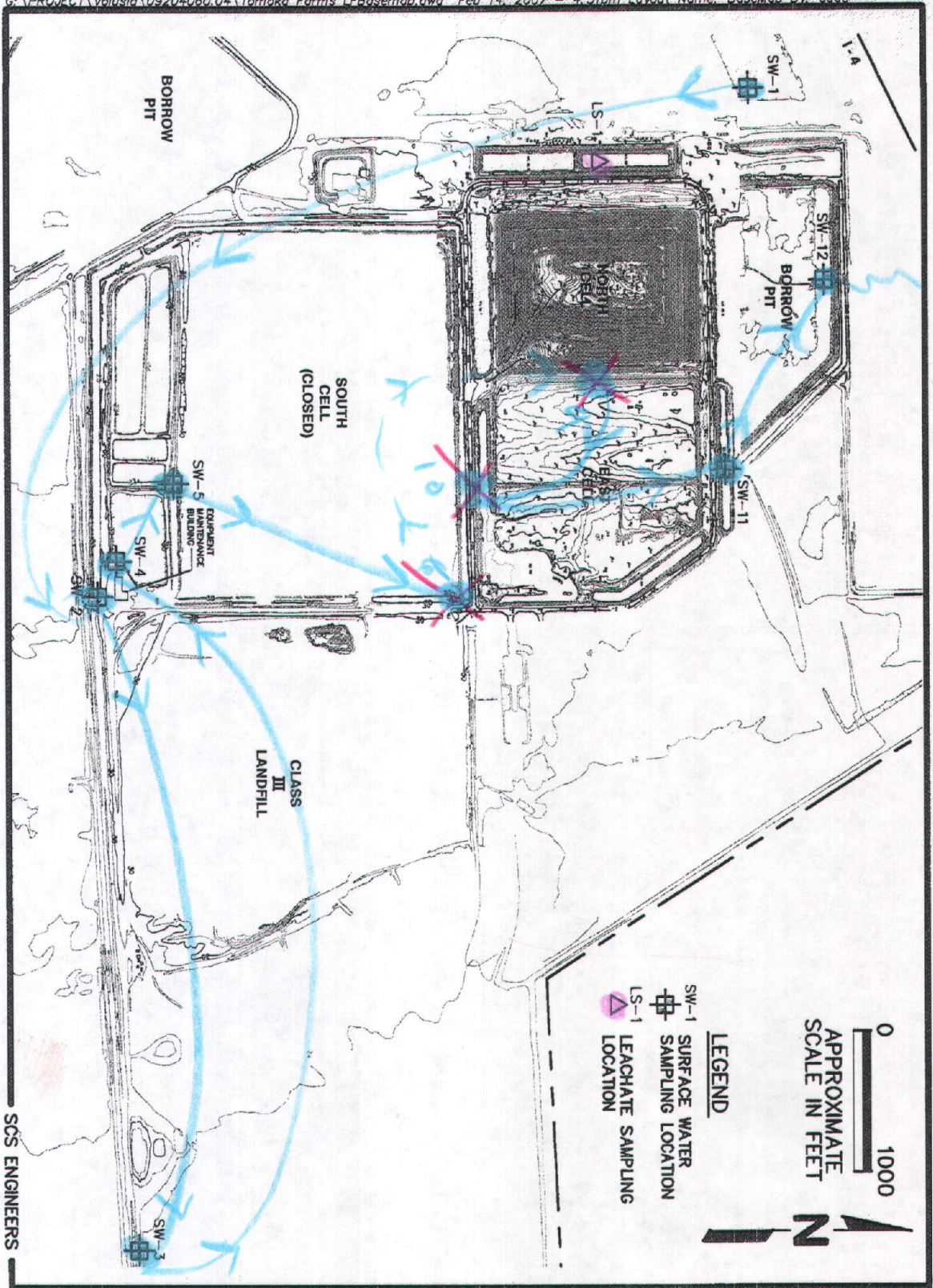


Figure 1. Surface Water Monitoring Sites, Tomoka Farms Road Landfill

MPIS SW loc

Tomoko

Σ exceeds  
(-Fe & TDS)

2012-05

Testsite Name	Sample Date	Parameter Name	Result	Concern Level	Reason for Concern or Non-concern	Measurement Unit	Qualifier
B62-1R	5/3/2012	AMMONIA (NH3) T	120		Interior well	MG/L	
B41-1	5/4/2012	AMMONIA (NH3) T	69.6		has step out	MG/L	
B62-2R	5/3/2012	AMMONIA (NH3) T	19.8		Interior well	MG/L	
B61R	5/3/2012	AMMONIA (NH3) T	14		Interior well	MG/L	
B1-B	5/3/2012	AMMONIA (NH3) T	13.2		has step out	MG/L	
MO-5	5/7/2012	AMMONIA (NH3) T	5.2		Well not on MPIS ?	MG/L	22 feet inactiv
MOS-B	5/7/2012	AMMONIA (NH3) T	5.1		Only ammonia	MG/L	32 feet
B64	5/1/2012	AMMONIA (NH3) T	3.9		has step out	MG/L	
B-2	5/2/2012	AMMONIA (NH3) T	3.6		sludge	MG/L	
B43-1	5/4/2012	AMMONIA (NH3) T	3.1		only other is Benzene at 1.0 J	MG/L	J
B75	5/2/2012	ARSENIC (AS)	17.9		was 18.9	UG/L	
B34-2	5/2/2012	ARSENIC (AS)	12.8		sludge processing area	UG/L	
B33-2	5/2/2012	ARSENIC (AS)	11.4		Turbidity 50.3	UG/L	
B45-1	5/4/2012	BENZENE	13.7		Step out	UG/L	
B37-1	5/1/2012	BENZENE	7.9		WCU	UG/L	
B36	5/1/2012	BENZENE	1.9		WCU	UG/L	
B41-1	5/4/2012	BENZENE	1.2		Step out	UG/L	
B43-1	5/4/2012	BENZENE	1		decrease from 1.4 round to not issue	UG/L	
B8-2	5/2/2012	CHLORIDE	271		sludge processing	MG/L	
B45-2	5/4/2012	CHLORIDE	265		not exceed 2011-11--only parm--and not much over	MG/L	
B36	5/1/2012	CHLORIDE	250		WCU	MG/L	
B33-2	5/2/2012	SODIUM (NA)	224		Leachate Basins down a lot since fix basin build WWTP	MG/L	
B62-1R	5/3/2012	SODIUM (NA)	222		Interior	MG/L	
B37-1	5/1/2012	SODIUM (NA)	218		WCU	MG/L	
B45-1	5/4/2012	SODIUM (NA)	215		step out	MG/L	
B41-1	5/4/2012	SODIUM (NA)	166		step out	MG/L	
B-2	5/2/2012	SULFATE (SO4)	454		sludge processing	MG/L	
SW-5	5/4/2012	UNIONIZED AMMO	0.03		I qualifier probably rounds down to compliance	MG/L	I
SW-5	5/4/2012	UNIONIZED AMMO	0.03		I qualifier probably rounds down to compliance	MG/L	I
B40-2	5/3/2012	TURBIDITY, FIELD	68.4		not go after Turbidity metals not showing up	NTU	D
B33-2	5/2/2012	TURBIDITY, FIELD	50.3		not go after Turbidity --arsenic 11.4	NTU	D

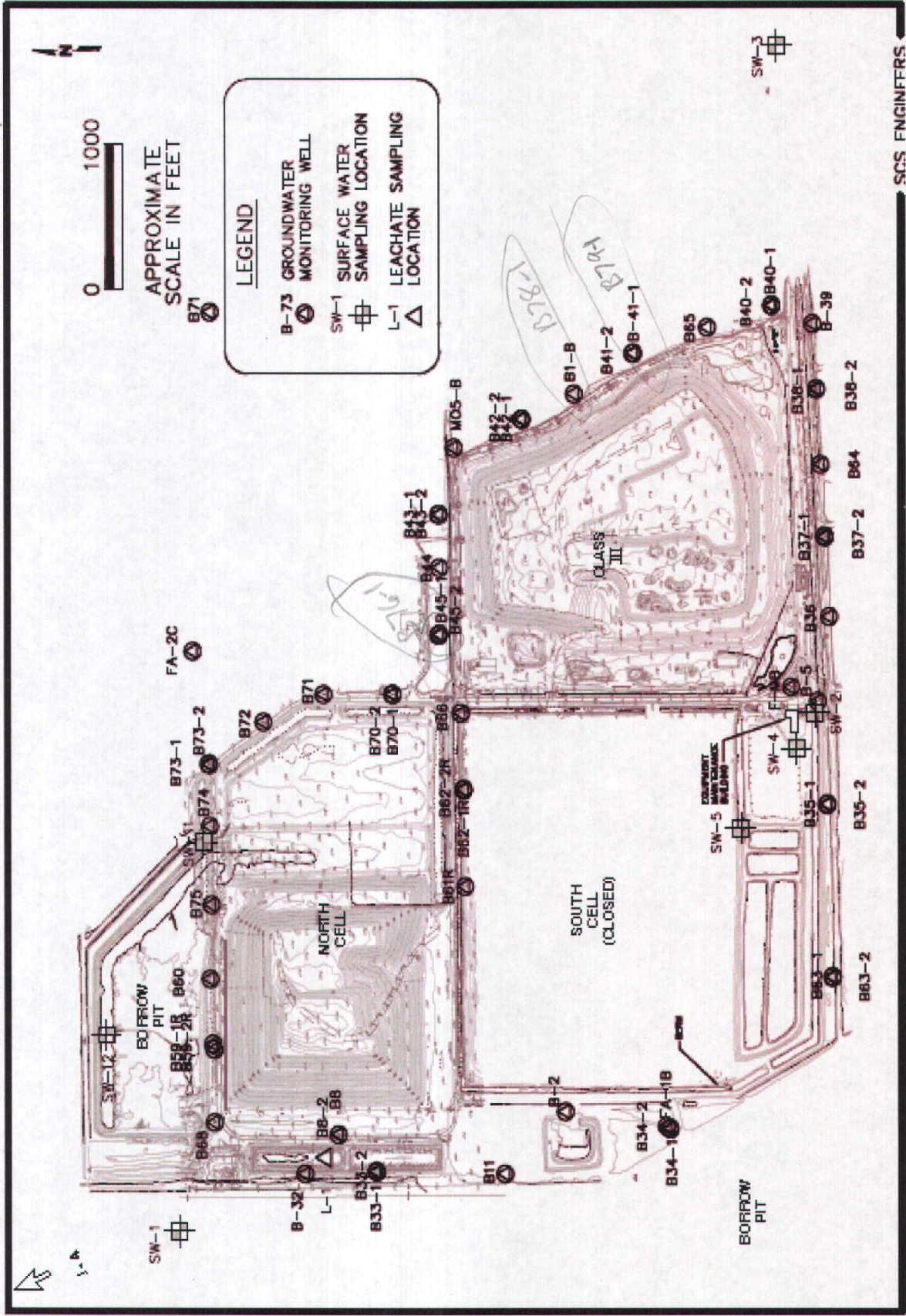
Tomoko

Map JEP Table Icons

WC 5/4/2012

5/4/2012

Preparing icons for JED table

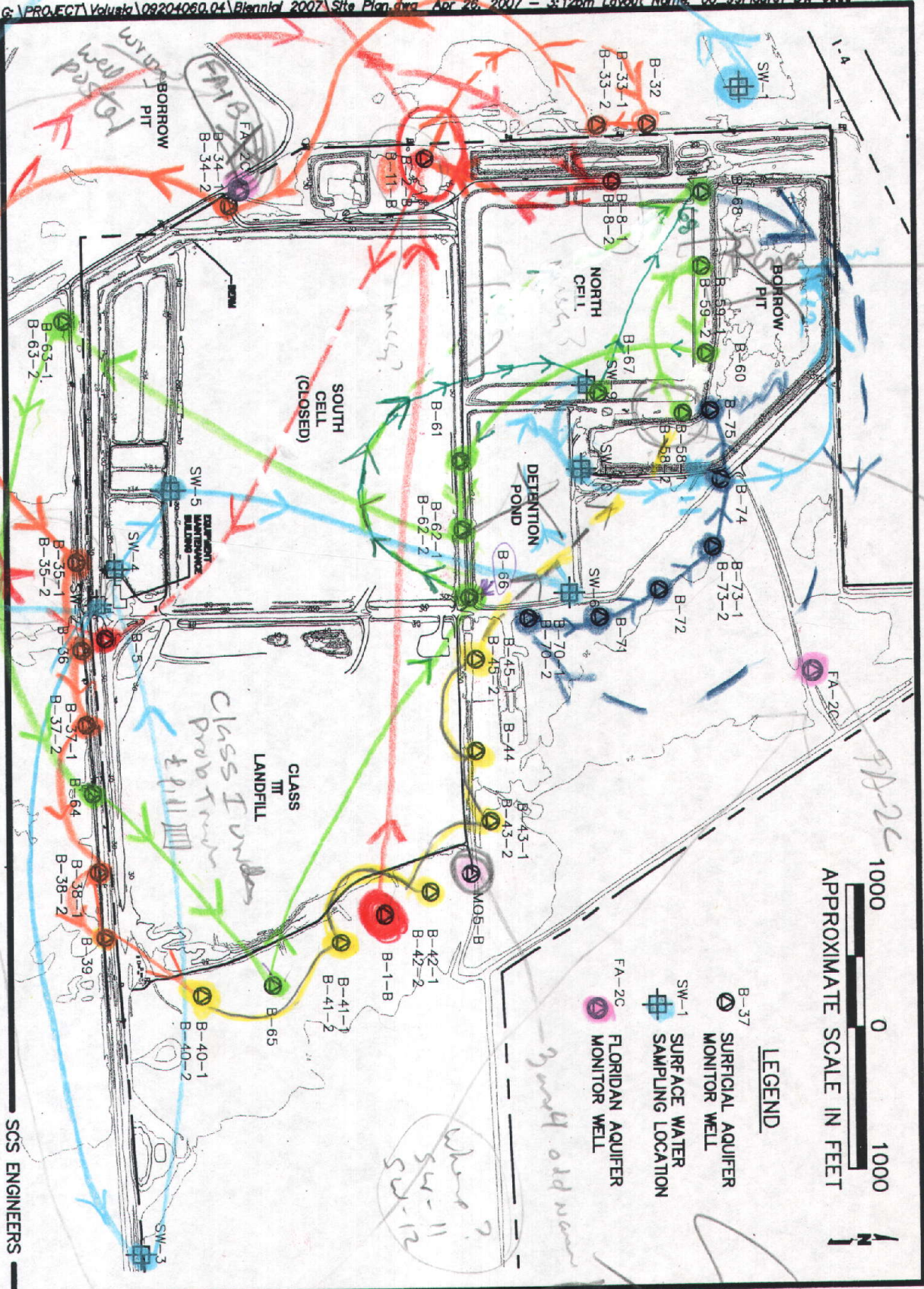


SCS ENGINEERS

11/01/09 69 T  
BPR

Double





From 8-11-332

FA-1B, 10-20-07

SCS ENGINEERS  
-0-29  
-30  
40s  
50-60  
70s

58 not a pit is it?

PA-2C

Tomoko  
6/25/07

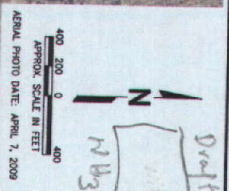
Handwritten signature and notes in purple and black ink.





SPRINKLER SOURCE NOTE:  
WELL LOCATIONS BASED ON SPECIFIC  
DESIGN & APPROVAL PERMITTED BY  
DESIGNER & APPROVAL NO. 00000000  
DATED MAY 19, 2009.

**LEGEND**  
 B-37 SURFICIAL MONITOR WELL  
 SM-1 SURFACE WATER SAMPLING LOCATION  
 FM-20 FLOODPLAIN MONITOR WELL



**SCS ENGINEERS**  
 STEARNS, CONRAD AND SCHMIDT  
 CONSULTING ENGINEERS  
 4411 PARK CREEK BLVD., SUITE 100, TAMPA, FL 33610  
 813 881-0000 FAX 813 882-5757  
 FLORIDA CERTIFICATE OF AUTHORIZATION NO. 00054982

**VOLUSIA COUNTY**  
 DEPARTMENT OF PUBLIC WORKS  
 SOLID WASTE DIVISION  
 DELAND, FLORIDA

**AERIAL PHOTOGRAPH SITE PLAN**  
 PROJECT TITLE  
**TOMOKA FARMS ROAD LANDFILL CLASS III CELL OPERATION PERMIT RENEWAL**

REV	DATE	DESCRIPTION	BY
1	7/30/09	REVISED PER R.A.I. NO. 1	LAP
2			
3			
4			
5			

*Draft*  
 MAB  
 Lee A. Powell, P.E.  
 LICENSE NO. 35992

DATE: JUNE 2009  
 SCALE: AS SHOWN  
 DRAWING NO. 09208007.07  
 SHEET NO. 2 of 8

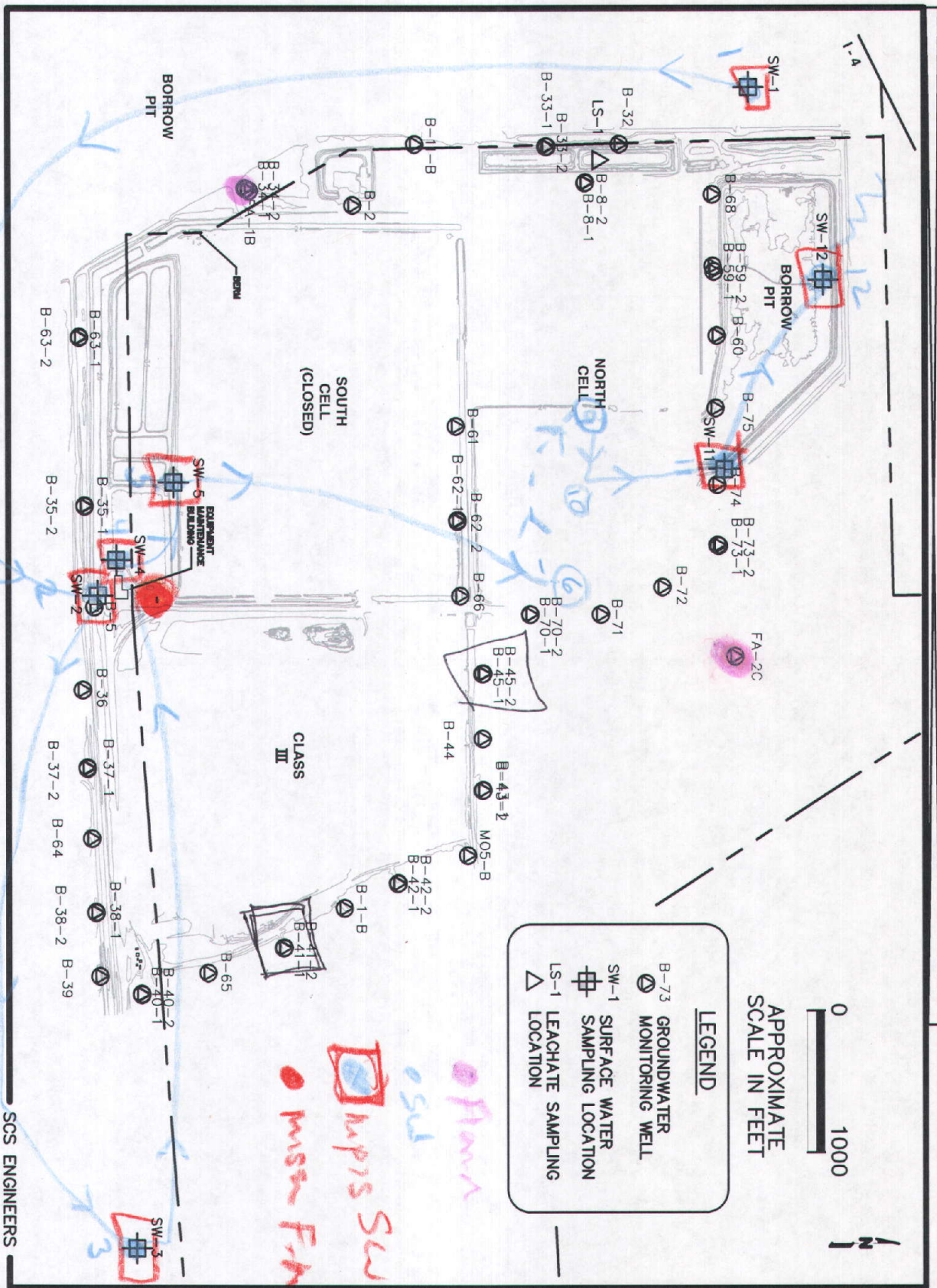


Figure 1. Site Map, Tomoka Farms Road Landfill

SCS ENGINEERS



**CLASS  
III  
LANDFILL**

B66

B76-1

B77

B45-1

B45-2

B44

OHE

B43-B

B42  
B42-2

B78-1

B79-1

B41-1  
B41-2

B65

OHE

B41-B

110406  
CER  
PS 9  
PDF