

THIS PLAN HAS BEEN DEVELOPED BY AERIAL PHOTOGRAMMETRIC METHODS FROM PHOTOGRAPHS DATED 12-02-2011
MAPPING DONE BY:

KUCERA INTERNATIONAL INC.

HEADQUARTERS: WILLOUGHBY, OHIO
DENVER, CO - LAKELAND, FL - COLUMBUS, OH
PITTSBURGH, PA - ST. LOUIS, MO

See report of topographic survey of lands in Secs. 2 & 3, Twp. 38S, Range 19, Sarasota Co., FL dated 12-02-10. This topographic map and attached report are not valid without the signature and original raised seal of a Florida licensed surveyor and mapper which can be found on the report. The map and report are not full and complete without the other.

Larry E. Towles P.S.M. No. 5413

NOTES: Accuracy Specifications

1) The contours depicted on this map were compiled to national map accuracy standards by Kucera International, Inc., Willoughby, Ohio, using photogrammetric methods from aerial photography taken 12-02-10. Contours which are in wooded or dense vegetation areas are approximations only and should be treated as "dashed contours".

2) Buildings are shown roofline only.

SHEET INDEX

| | |
|---|---|
| 1 | 2 |
| 3 | 4 |

LEGEND

- 680 5' CONTOUR ELEVATION, FEET (MSL)
- 1' CONTOUR
- FENCE
- DIRT / UNIMPROVED ROAD
- TREE LINE
- DITCH (WATER) LINE
- CONTROL POINT
- SPOT ELEVATION
- POWER POLE
- NON-UTILITY POLE
- GUYWIRE
- LIGHT POLE
- POST
- SIGN
- TREE
- CATCH BASIN
- PIPE INLET
- MANHOLE

100 0 50 100 200
SCALE 1" = 100'

VEOLIA ENVIRONMENTAL SERVICES
4000 Knights Trail Road
Nokomis, Florida 34275

Revisions

| No. | Description | Date | By | No. | Description | Date | By |
|-----|-------------|------|----|-----|-------------|------|----|
| | | | | | | | |
| | | | | | | | |

Approved By:

Checked By:

Drawn By:

Project Location:

**SITE TOPOGRAPHIC MAP
NOKOMIS, FL**

SARASOTA LANDFILL

Drawing No.

T-01-05075-175

Scale:

As Shown

Sheet Number:

Date:

DEC. 02, 2010

1 of 4

Dept. Of Environmental Protection

APR 21 2011

Southwest District

RECEIVED

APR 19 2011

OLD WASTE OPERATION

REGISTERED PROFESSIONAL

Surveyor No. 80608

APR 26 2011

INITIAL

A

B

C

D

E

F

G

H

E 526500

E 527000

E 527500

E 528000

E 528500

E 529000

1

2

3

4

5

6



THIS PLAN HAS BEEN DEVELOPED BY AERIAL PHOTOGRAMMETRIC
METHODS FROM PHOTOGRAPHS DATED 12-02-201
MAPPING DONE BY:

KUCERA INTERNATIONAL INC.

HEADQUARTERS: WILLOUGHBY, OHIO
DENVER, CO - LAKELAND, FL - COLUMBUS, OH
PITTSBURGH, PA - ST. LOUIS, MO

See report of topographic survey of lands in Secs. 2 & 3, Twp. 38S, Range 19, Sarasota Co., FL
dated 12-02-10. This topographic map and attached report are not valid without the signature
and original raised seal of a Florida licensed surveyor and mapper which can be found on
the report. The map and report are not full and complete without the other.

Larry E. Towles P.S.M. No. 5413

NOTES: Accuracy Specifications

- 1) The contours depicted on this map were compiled to national map accuracy standards by Kucera International, Inc., Willoughby, Ohio, using photogrammetric methods from aerial photography taken 12-02-10. Contours which are in wooded or dense vegetation areas are approximations only and should be treated as "dashed contours".
- 2) Buildings are shown roofline only.

SHEET INDEX

| | |
|---|---|
| 1 | 2 |
| 3 | 4 |

LEGEND

- 680 5' CONTOUR ELEVATION, FEET (MSL)
- 1' CONTOUR
- FENCE
- DIRT / UNIMPROVED ROAD
- TREE LINE
- DITCH (WATER) LINE
- CONTROL POINT
- SPOT ELEVATION
- POWER POLE
- NON-UTILITY POLE
- GUYWIRE
- LIGHT POLE
- POST
- SIGN
- TREE
- CATCH BASIN
- PIPE INLET
- MANHOLE

100 0 50 100 200

SCALE 1" = 100'

VEDLIA ENVIRONMENTAL SERVICES
4000 Knights Trail Road
Nokomis, Florida 34275

Revisions

| No. | Description | Date | By | No. | Description | Date | By |
|-----|-------------|------|----|-----|-------------|------|----|
| | | | | | | | |
| | | | | | | | |

Approved By:

Checked By:

Drawn By:

Project Location:

SITE TOPOGRAPHIC MAP
NOKOMIS, FL

SARASOTA LANDFILL

Drawing No.

T-01-05075-175

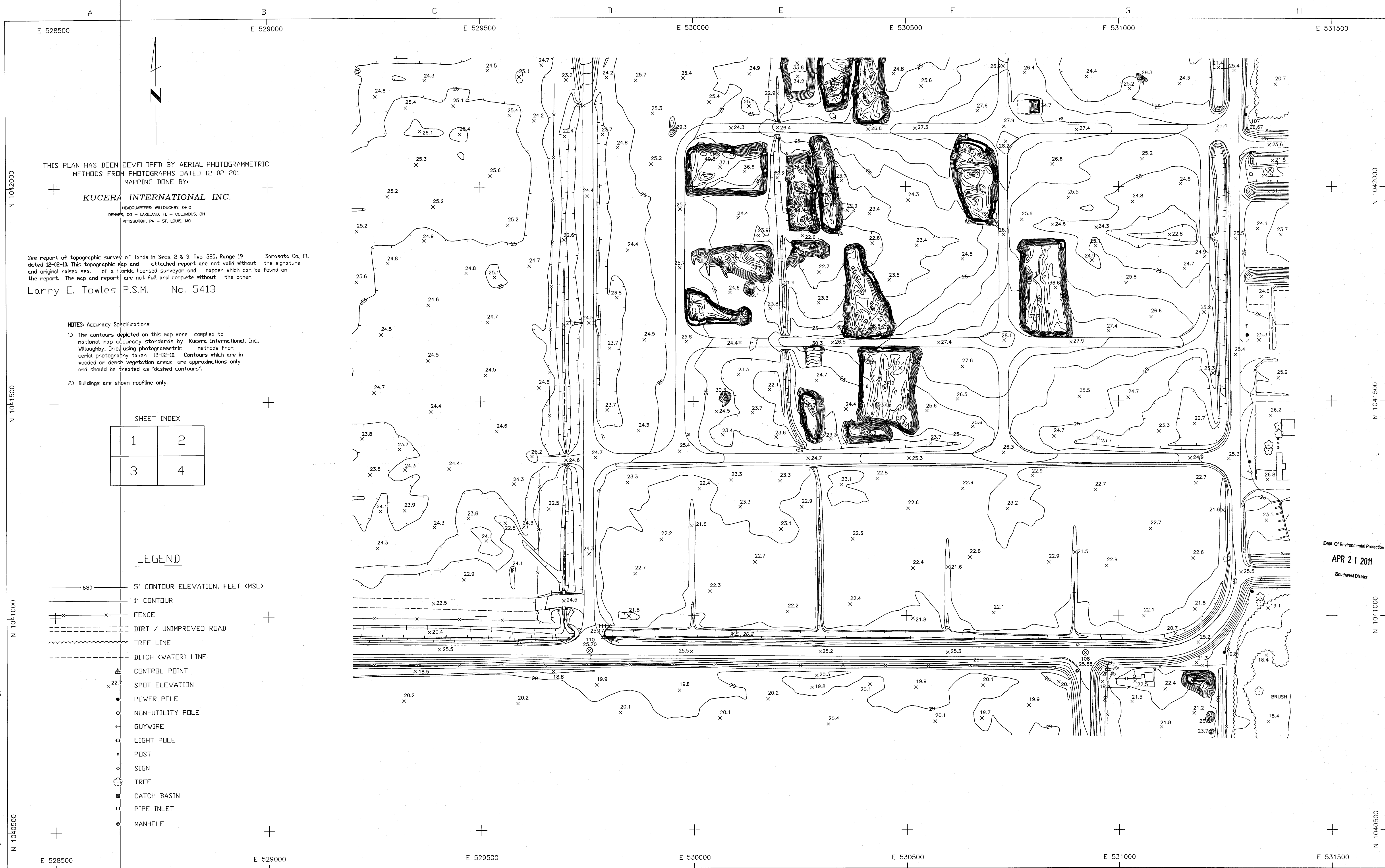
Scale: As Shown

Sheet Number:

Date: DEC. 12, 2010

3 of 4

INTEGRITY TO QUALITY
3/28/2011
APR 25 2011
INITIAL



THIS PLAN HAS BEEN DEVELOPED BY AERIAL PHOTOGRAMMETRIC METHODS FROM PHOTOGRAPHS DATED 12-02-201
MAPPING DONE BY:
KUCERA INTERNATIONAL INC.
HEADQUARTERS: WILLOUGHBY, OHIO
DENVER, CO - LAKELAND, FL - COLUMBUS, OH
PITTSBURGH, PA - ST. LOUIS, MO

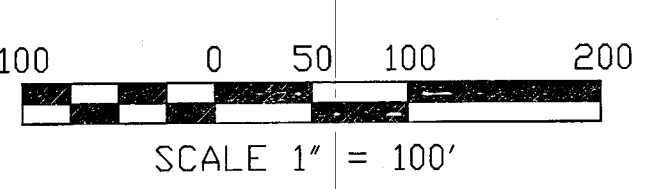
See report of topographic survey of lands in Secs. 2 & 3, Twp. 38S, Range 19, Sarasota Co., FL dated 12-02-10. This topographic map and attached report are not valid without the signature and original raised seal of a Florida licensed surveyor and mapper which can be found on the report. The map and report are not full and complete without the other.
Larry E. Towles P.S.M. No. 5413

- NOTES: Accuracy Specifications
- 1) The contours depicted on this map were compiled to national map accuracy standards by Kucera International, Inc., Willoughby, Ohio, using photogrammetric methods from aerial photography taken 12-02-10. Contours which are in wooded or dense vegetation areas are approximations only and should be treated as 'dashed contours'.
 - 2) Buildings are shown roofline only.

| SHEET INDEX | |
|-------------|---|
| 1 | 2 |
| 3 | 4 |

LEGEND

- 680 5' CONTOUR ELEVATION, FEET (MSL)
- 1' CONTOUR
- FENCE
- DIRT / UNIMPROVED ROAD
- TREE LINE
- DITCH (WATER) LINE
- CONTROL POINT
- SPOT ELEVATION
- POWER POLE
- NON-UTILITY POLE
- GUYWIRE
- LIGHT POLE
- POST
- SIGN
- TREE
- CATCH BASIN
- PIPE INLET
- MANHOLE



VEOLIA ENVIRONMENTAL SERVICES
4000 Knights Trail Road
Nokomis, Florida 34275

| Revisions | | | | | |
|-----------|-------------|------|----|-----|-------------|
| No. | Description | Date | By | No. | Description |
| | | | | | |
| | | | | | |

Approved By: _____
Checked By: _____
Drawn By: _____

Project Location:
**SITE TOPOGRAPHIC MAP
NOKOMIS, FL**

SARASOTA LANDFILL

Drawing No. T-01-05075-175
Scale: As Shown
Date: DEC. 02, 2010
Sheet Number: 4 of 4

Dept. Of Environmental Protection
APR 21 2011
Southwest District

INSERTED INTO COLLUS
308168
APR 25 2011
INITIAL