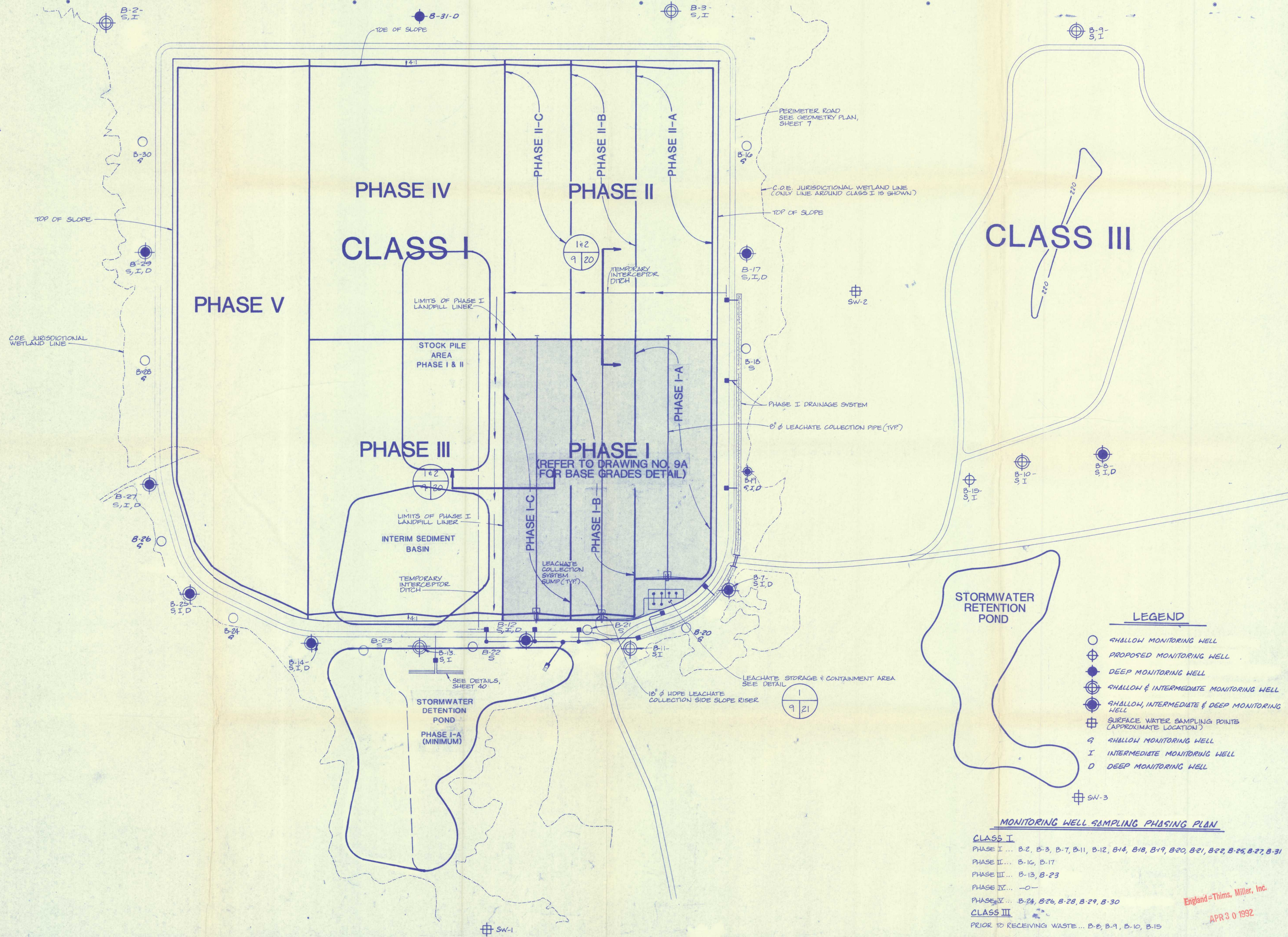


NORTH
1" = 200'



LEGEND

- SHALLOW MONITORING WELL
- ⊕ PROPOSED MONITORING WELL
- DEEP MONITORING WELL
- ⊕ SHALLOW & INTERMEDIATE MONITORING WELL
- ⊕ SHALLOW, INTERMEDIATE & DEEP MONITORING WELL
- ⊕ SURFACE WATER SAMPLING POINTS (APPROXIMATE LOCATION)
- 9 SHALLOW MONITORING WELL
- I INTERMEDIATE MONITORING WELL
- D DEEP MONITORING WELL

MONITORING WELL SAMPLING PHASING PLAN

CLASS I
 PHASE I ... B-2, B-3, B-7, B-11, B-12, B-14, B-18, B-19, B-20, B-21, B-22, B-25, B-27, B-31
 PHASE II ... B-16, B-17
 PHASE III ... B-13, B-23
 PHASE IV ... —
 PHASE V ... B-24, B-26, B-28, B-29, B-30
CLASS III
 PRIOR TO RECEIVING WASTE ... B-8, B-9, B-10, B-15

3-30-92 RELEASED FOR CONSTRUCTION (UPDATED)
 1092 RELEASED FOR CONSTRUCTION

REVISIONS
 1-15-91 CONTRACT DOCUMENTS
 12-9-91 BID SET
 12-19-91 REVISED TO SHOW PHASE I-A, I-B, I-C PHASING OF STORMWATER MANAGEMENT SYSTEM
 4-30-92 REVISED PHASING MONITORING WELL LOCATION
 1-14-92 REV MONITORING WELL LOCATIONS PHASING, PER PERMIT COND. NO. 38

FIG. PROJ. NO.	E89-113-9
DRAWN BY	T.L.D.
CHECKED BY	S.A.H.
DATE	JULY 23, 1990

BOTTOM LINER PHASING PLAN

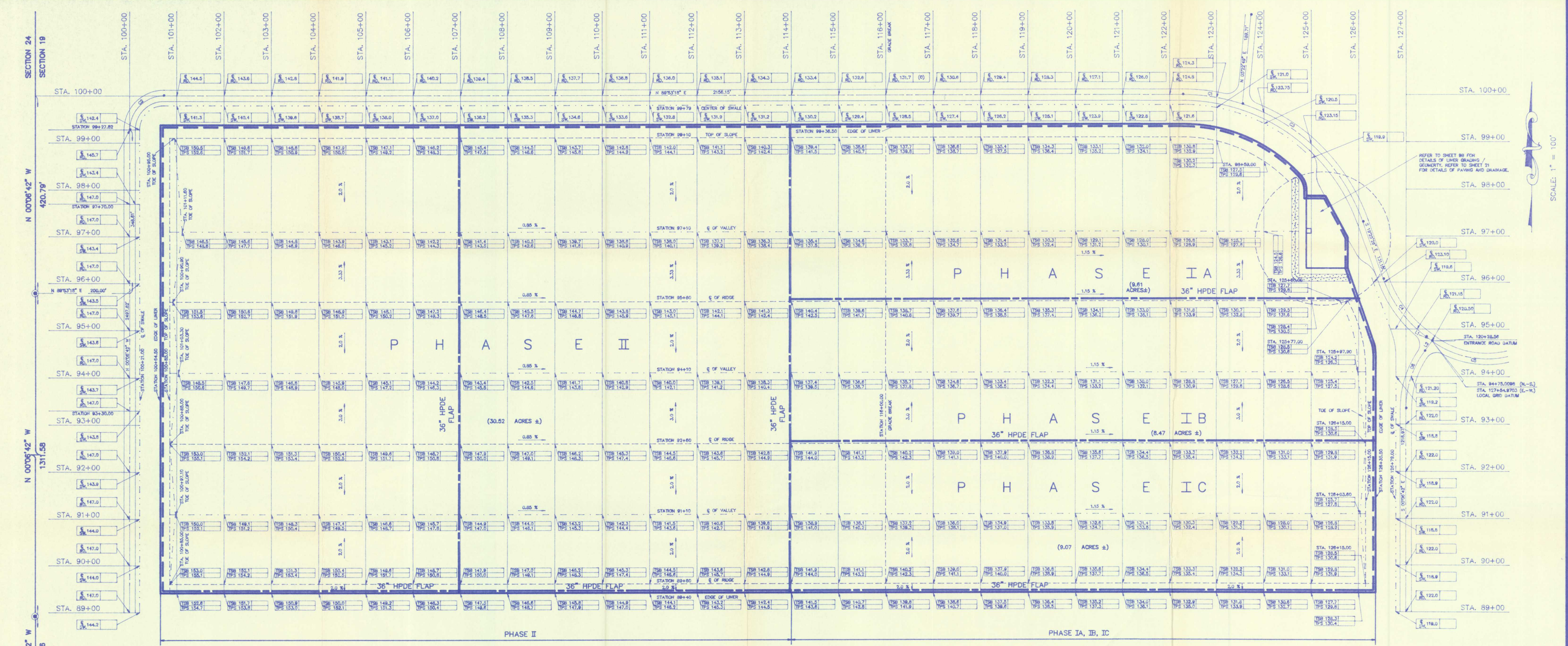
TRAIL RIDGE LANDFILL (PLAN A)

England-Thims & Miller, Inc.
 Consulting & Design Engineers
 JACKSONVILLE, FLORIDA

DRAWING NO. **9**

PROJ. NO. E89-113

England-Thims, Miller, Inc.
 APR 30 1992



CURVE DATA

CURVE	RADIUS	LENGTH	TANGENT	CHORD	BEARING	DELTA
C1	403.00'	128.39'	64.14'	127.85'	N 89°53'18" W	183°03'
C2	72.18'	113.36'	72.18'	102.07'	S 44°31'19" W	89°59'59"
C3	403.00'	368.87'	198.49'	356.13'	N 45°38'33" W	52°26'13"
C4	257.73'	154.88'	79.88'	152.56'	S 36°59'17" E	34°52'54"
C5	195.83'	169.19'	90.26'	163.93'	S 78°36'07" E	49°30'00"
C6	204.35'	129.32'	66.91'	127.17'	S 18°01'05" W	36°13'30"

LINE DATA

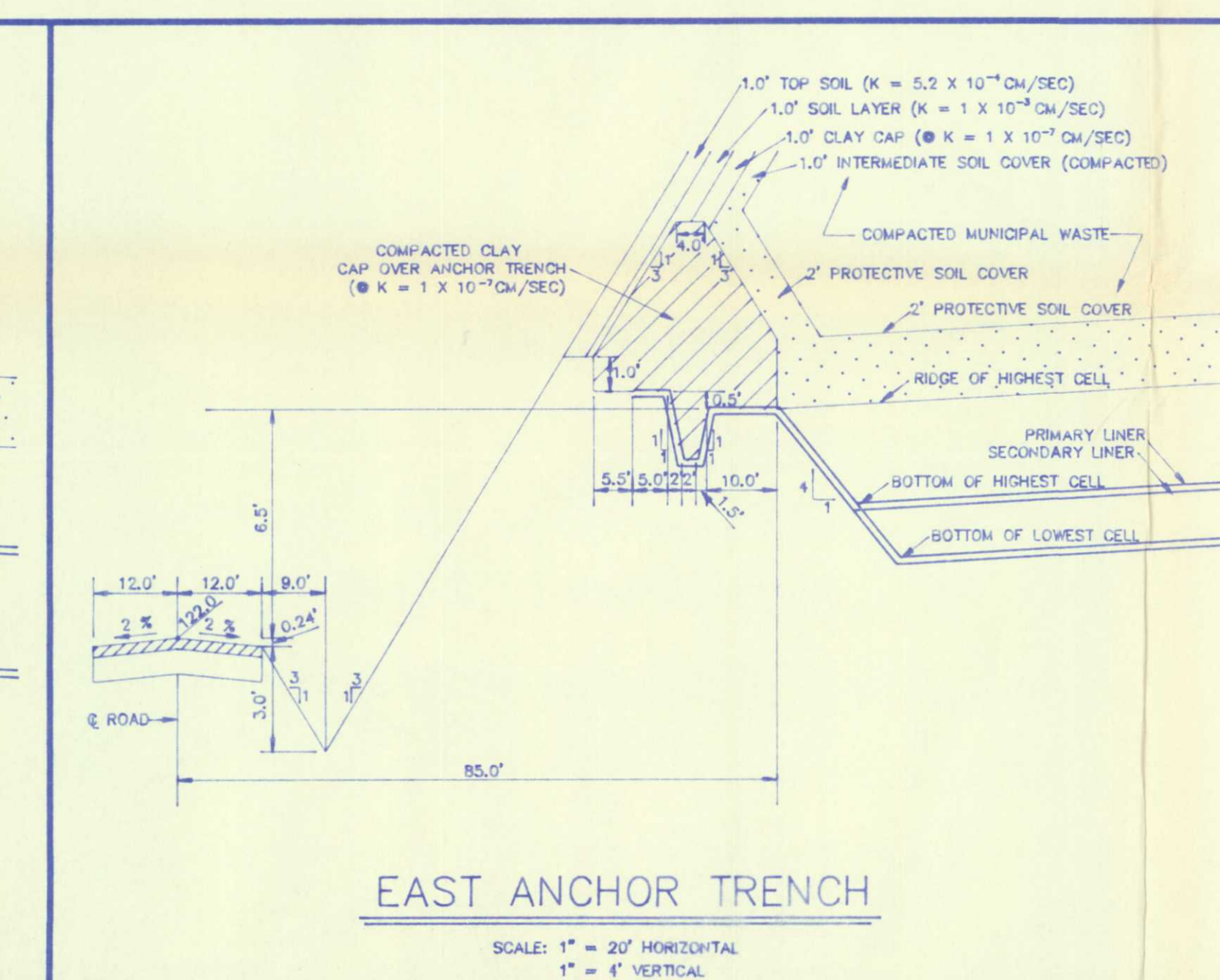
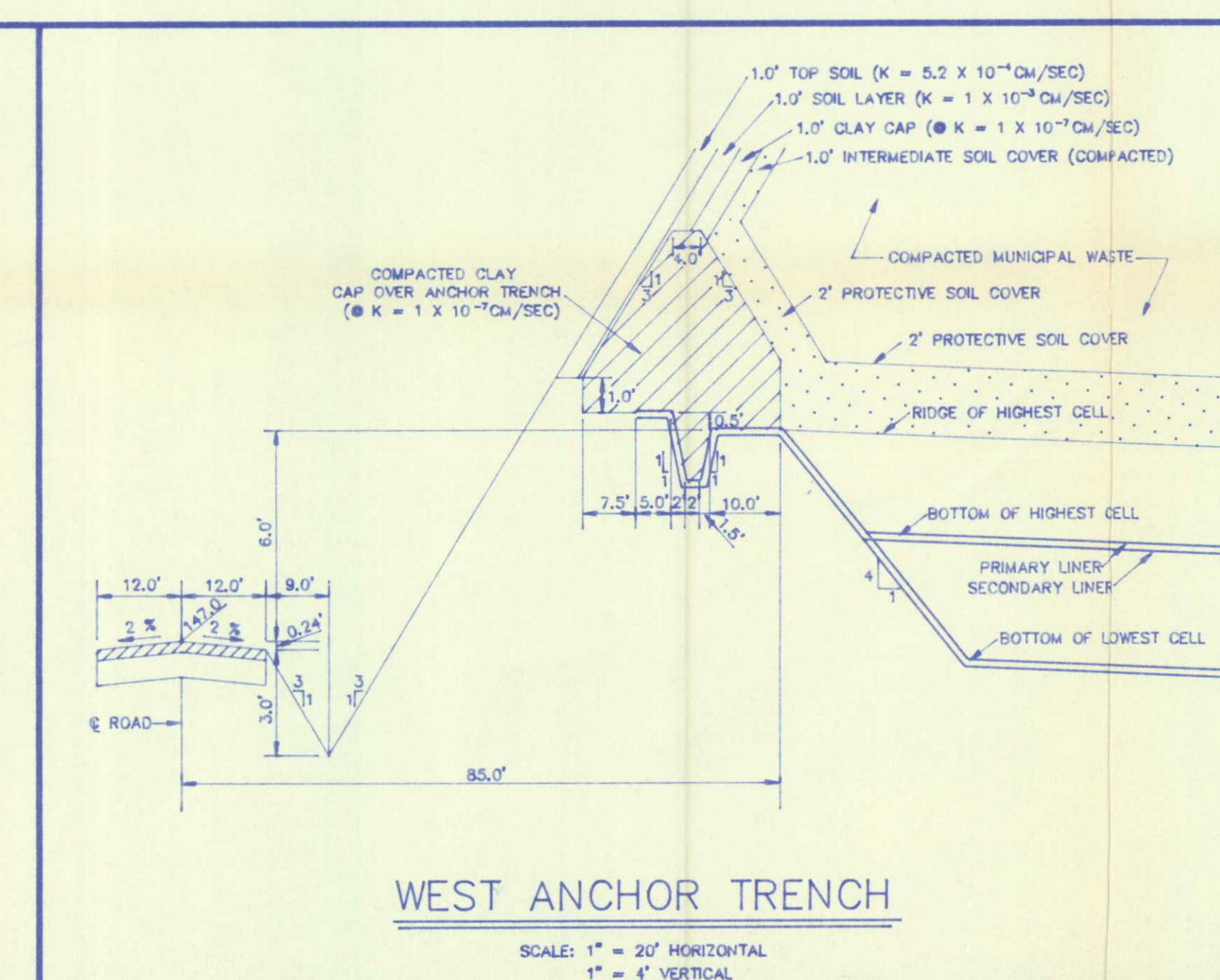
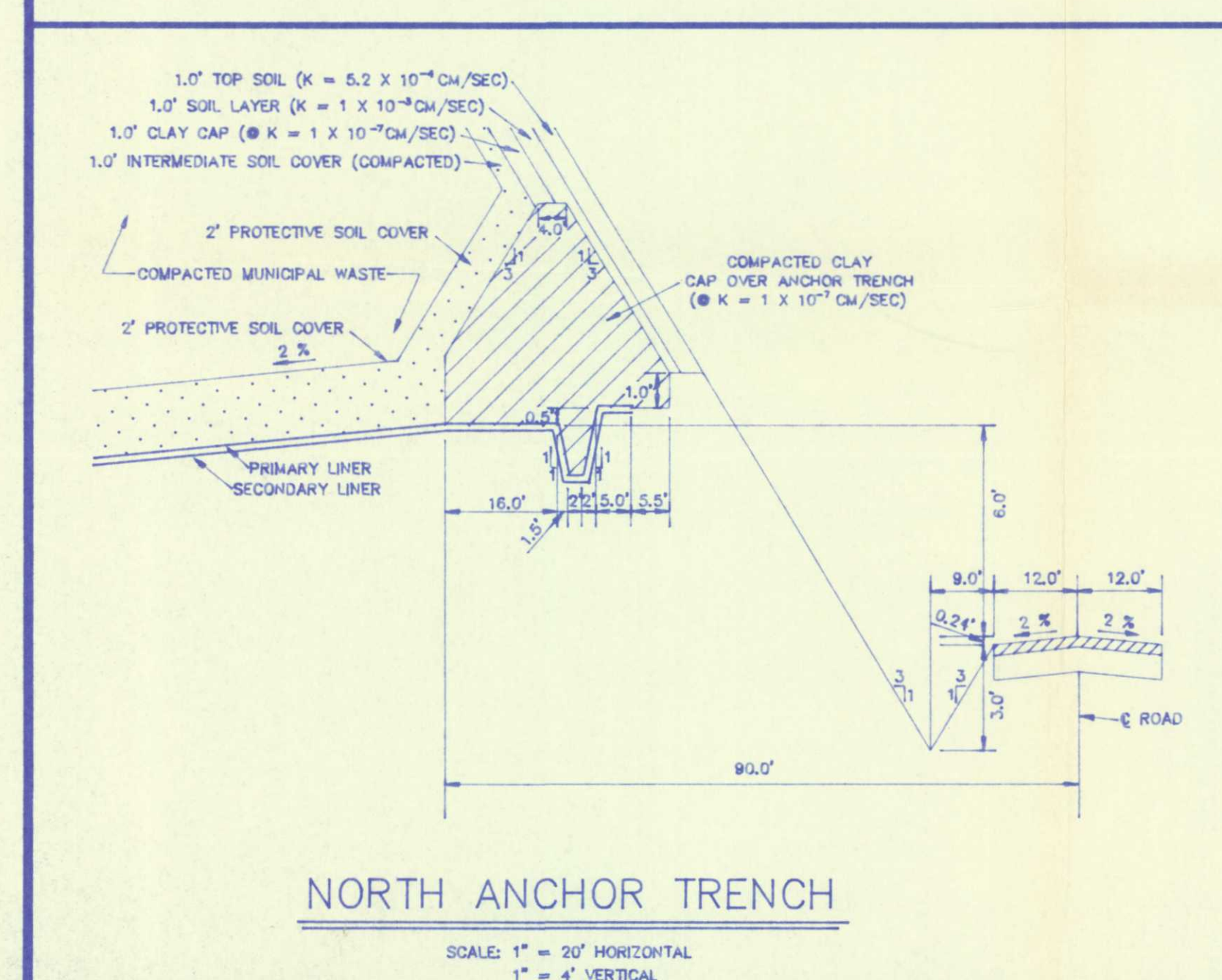
LINE	BEARING	DISTANCE
L1	N 53°51'04" W	15.00'
L2	S 36°59'17" E	26.42'

LOCAL GRID DATUM
 NORTHERLY LINE OF GRID: N. 89° 53' 18" E.
 WESTERLY LINE OF GRID: N. 00° 06' 42" W.
 REFERENCE STATIONS: 100+00.00 (N-S), 100+00.00 (E-W), AT THE POINT OF INTERSECTIONS (P.I.) FOR CURVE NUMBER 2

LEGEND

- PHASE LINE
- 36" HPDE FLAP
- LINE
- Q OF VALLEY
- Q OF RIDGE
- Q OF DITCH
- FLOW ARROWS

TOP OF SUBBASE ELEV. (DESIGN) ("AS-BUILT")
 TSB 149.2
 TBS 151.3
 TOP OF PROTECTIVE SOIL ELEV.



LINER OPERATIONAL PHASING

PHASE IA (9.61 AC±) - 210 DAYS
 PHASE IB (8.47 AC±) - 270 DAYS
 PHASE IC AND II (39.62 AC±) - 395 DAYS

NOTES:

- SEE DRAWING NUMBERS 8, AND 9 FOR PHASE III, PHASE IV, AND PHASE V.
- REFER TO DRAWING NUMBER 17 FOR DETAILS OF LEACHATE COLLECTION SUMP.

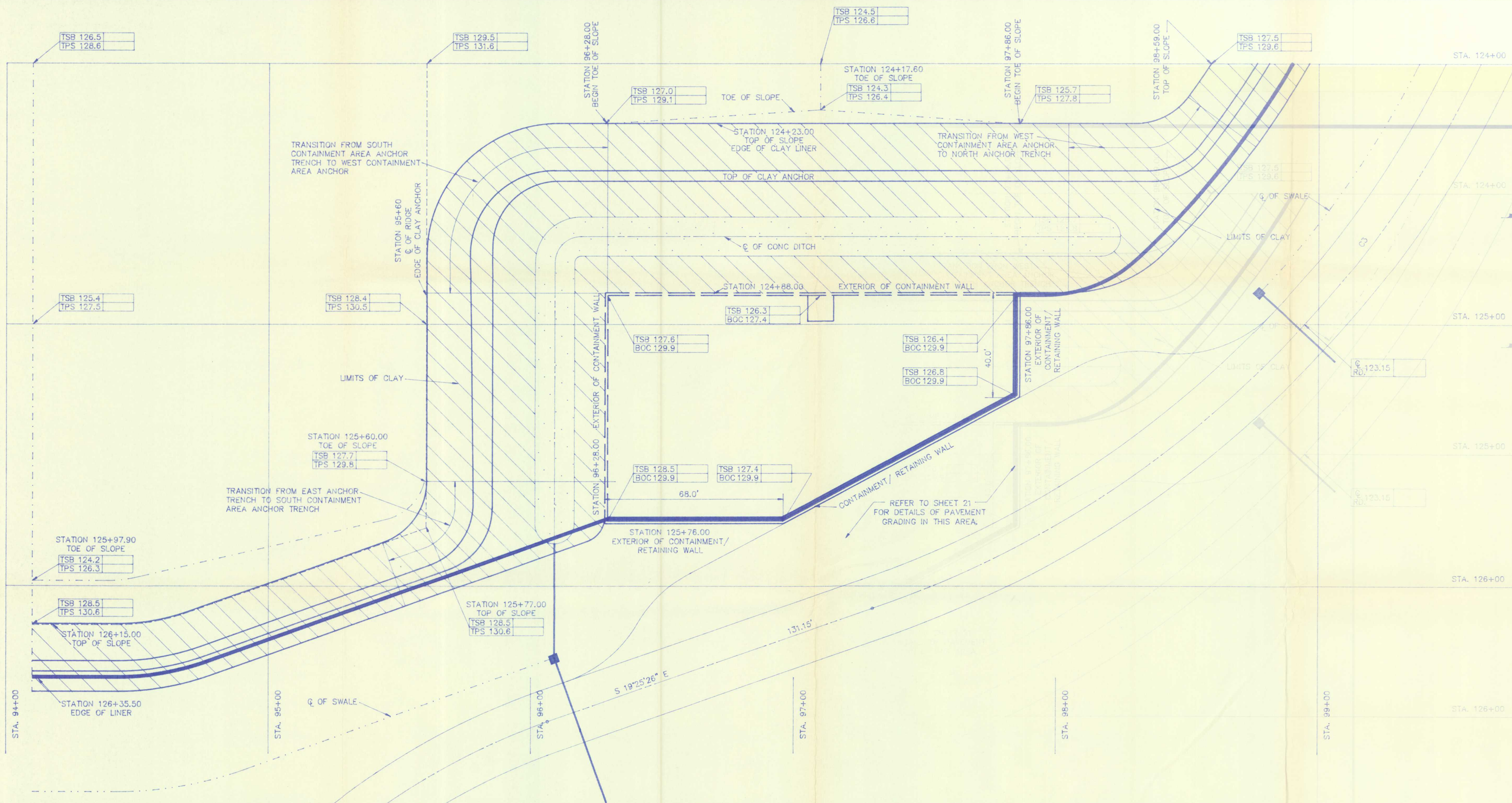
3-30-92 RELEASED FOR CONSTRUCTION (UPDATED).
 1-6-92 RELEASED FOR CONSTRUCTION

5 YEAR INCREMENT LINER PHASING PLAN
TRAIL RIDGE LANDFILL (PLAN A)

England-Thimms & Miller, Inc.
 Consulting & Design Engineers
 3131 St. Johns Bluff Road South Jacksonville, Florida 32216 (904)-642-6990

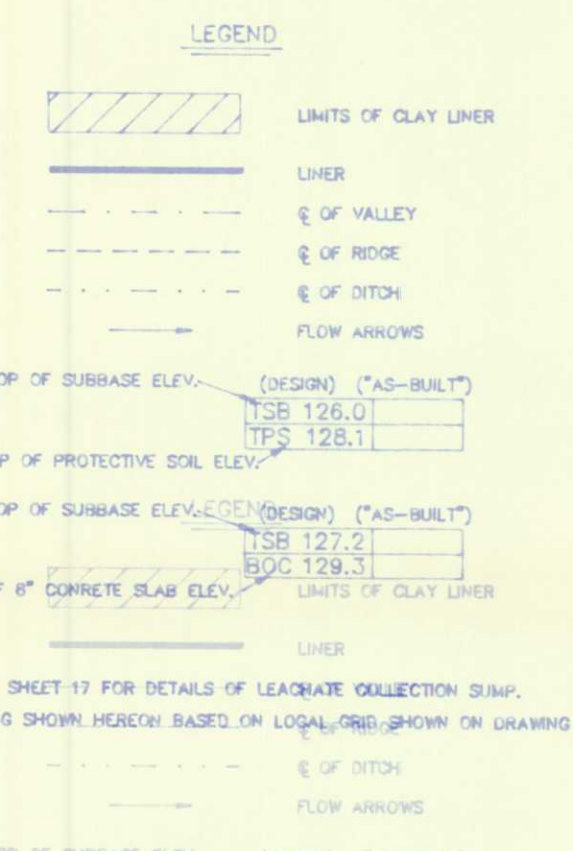
REVISIONS

ENC. PROJ. NO. E 81-158-2	REVISIONS 12-20-91	REVISED TO ADD PHASE I AND B 36" HPDE FLAPS	DRAWING NO.
DRAWN BY: S.A.L.	1-6-92	REVISED EAST - WEST STATIONING	9A
CHECKED BY: D.C.M.	4-23-92	GENERAL REVISIONS	
DATE: 12-19-91			

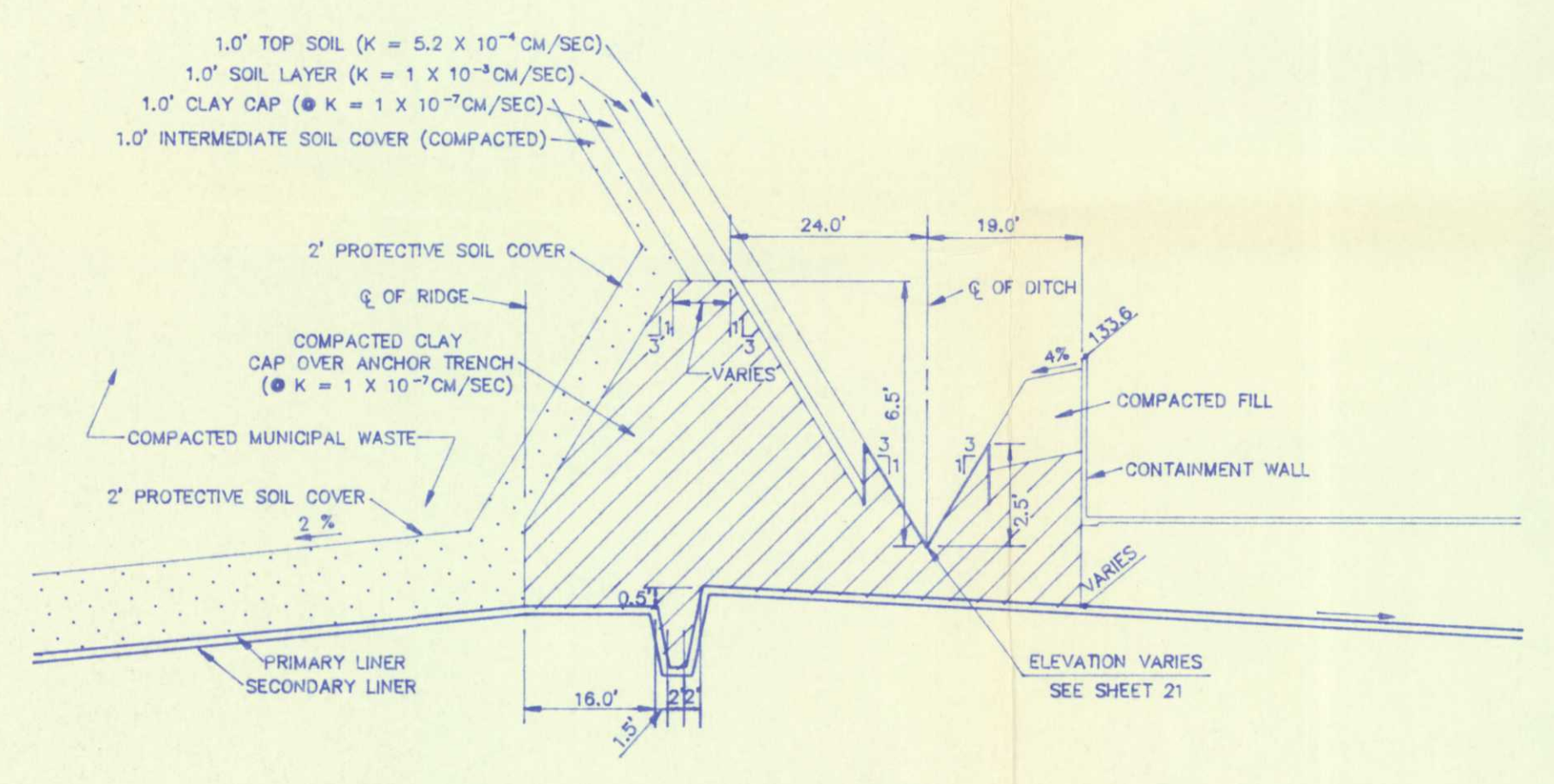


SCALE: 1" = 20'

SCALE: 1" = 20'

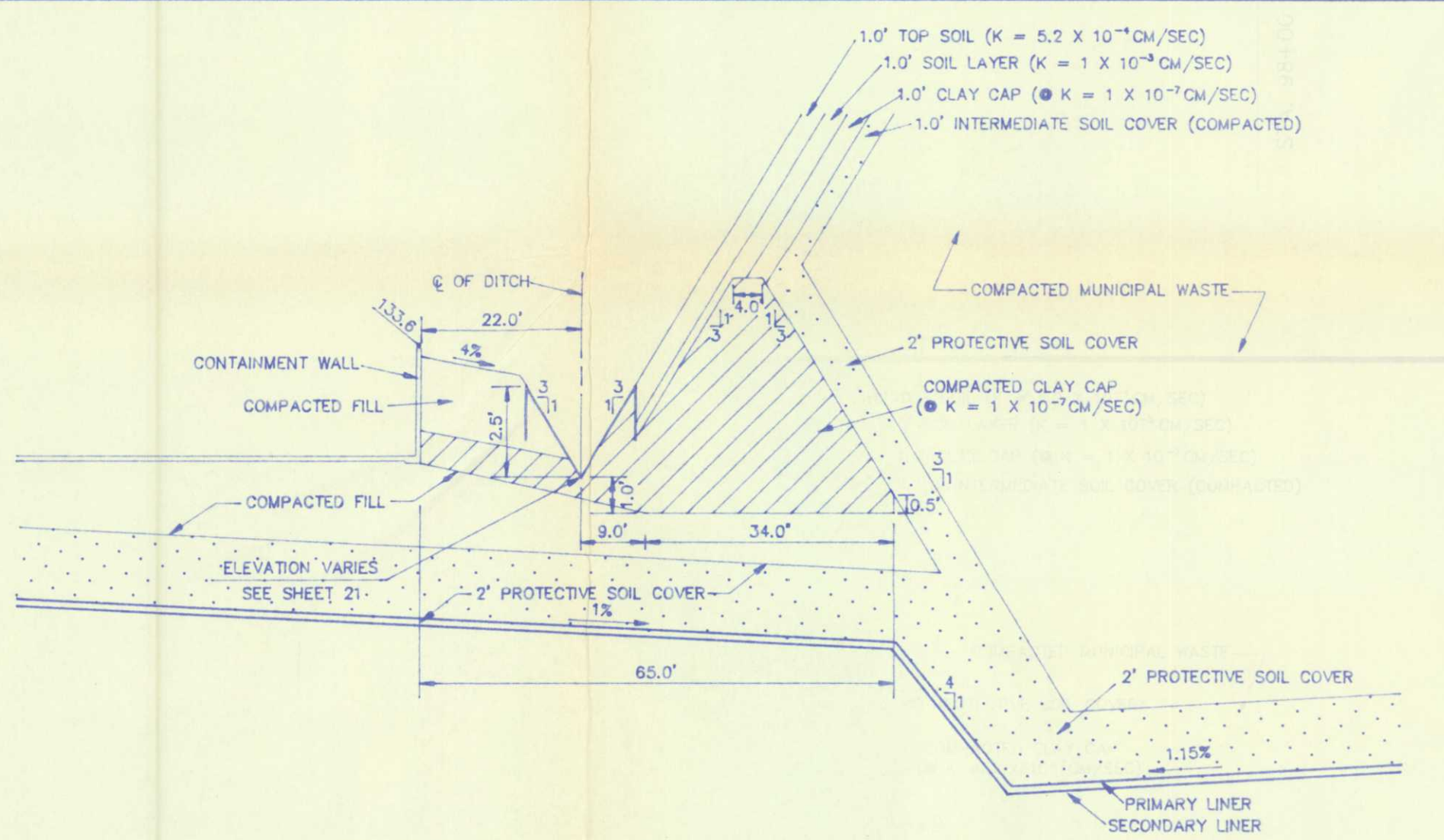


NOTES:
 1. REFER TO SHEET 17 FOR DETAILS OF LEACHATE COLLECTION SLAB.
 2. STATIONING SHOWN HEREIN BASED ON LOCAL GRID SHOWN ON DRAWING NUMBER 9A.



**SOUTH CONTAINMENT AREA
 ANCHOR TRENCH DETAIL**

SCALE: 1" = 20' HORIZONTAL
 1" = 4' VERTICAL



WEST CONTAINMENT AREA SECTION

SCALE: 1" = 20' HORIZONTAL
 1" = 4' VERTICAL

**3-30-92 RELEASED FOR CONSTRUCTION (UPDATED),
 1-6-92 RELEASED FOR CONSTRUCTION**

**CONTAINMENT AREA LINER GRADING
 DETAILS**

NOTES:
 1. REFER TO SHEET 17 FOR DETAILS OF LEACHATE COLLECTION SLAB.
 2. STATIONING SHOWN HEREIN BASED ON LOCAL GRID SHOWN ON DRAWING NUMBER 9A.

TRAIL RIDGE LANDFILL
 (PLAN 'A')

England, Thimby & Miller, Inc.
 Consulting & Design Engineers (813) 542-0990
 3131 St. Johns Bluff Road South Jacksonville, Florida 32216

DES. PROJ. NO.	13-125-21	FOR CONSTRUCTION (UPDATED)	DRAWING NO.	9B
DATE	1-15-92	AREA SECTION (SITE LAYOUT)	DATE	1-15-92
CHECKED BY	4-23-92	GENERAL REVISIONS	DATE	12-12-91

**CONTAINMENT AREA LINER GRADING
 DETAILS**

TRAIL RIDGE LANDFILL
 (PLAN 'A')



3-30-92 RELEASED FOR CONSTRUCTION (UPDATED)
1/6-91 CHANGED PIPE LENGTH
BETWEEN 5-75 & 5-86
4-27-92 RELOCATED STOCK
PILE AREA. ALSO REVISOR TO
INTERIM SEGMENT
BASIN

REVISED
4-10-90 ADDED WETLAND LINE
1-13-91 CONTRACT DOCUMENTS
1-13-91 AS PER CITY COMMENTS
12-30-91 BID SET FOR SPREADER DETAIL
12-19-91 PROVIDED PHASING OF
STORMWATER MANAGEMENT
SYSTEM STRUCTURES

ENG. PROJ. NO.
89-113-9
DRAWN BY
TLD
CHECKED BY
SAH
DATE
JUNE 18, 1990

England-Thims & Miller, Inc.
Consulting & Design Engineers
JACKSONVILLE, FLORIDA



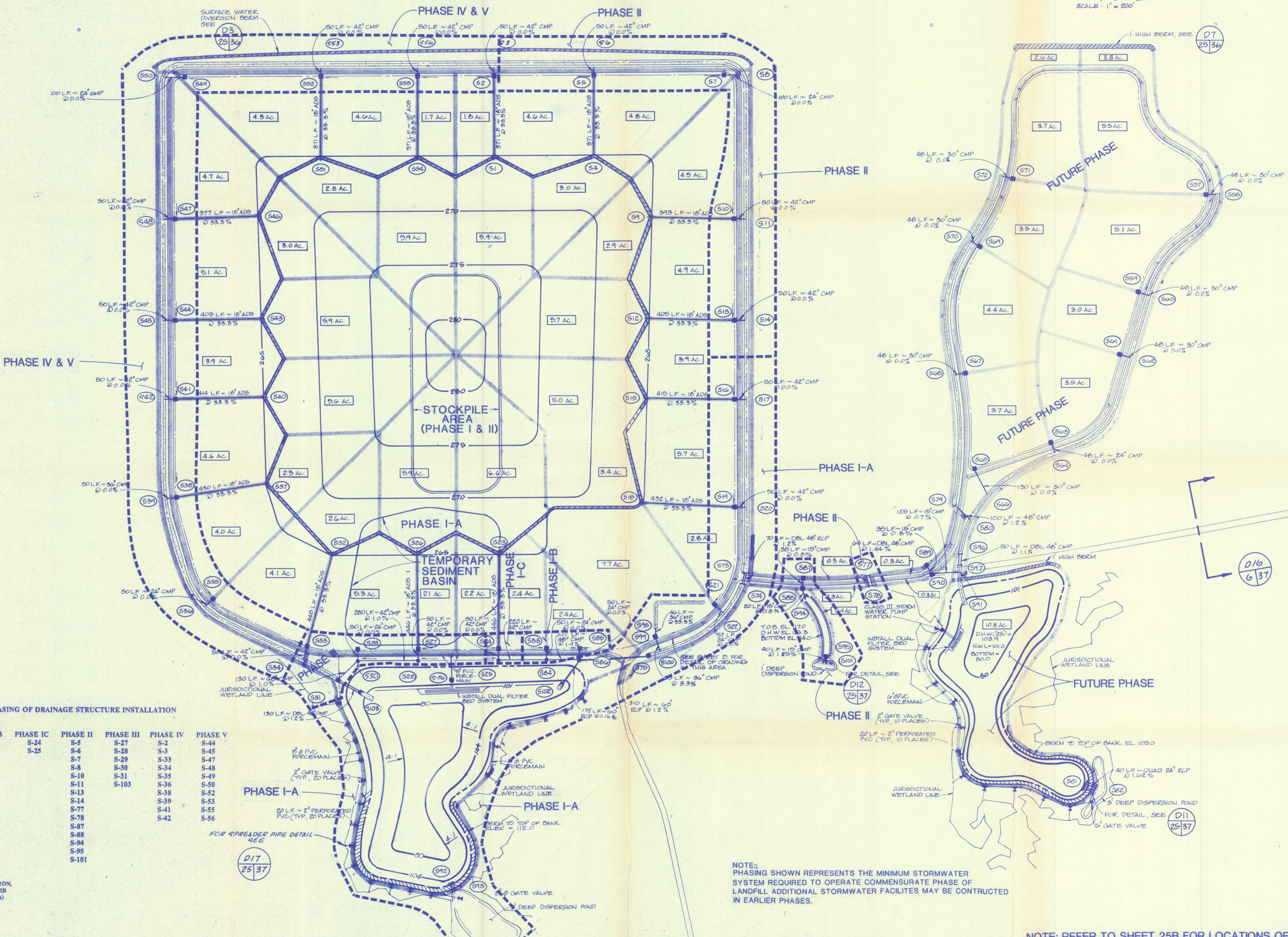
DRAWING NO.

25A

PROJ. NO. 89-113-9

STORMWATER MANAGEMENT PHASING PLAN

TRAIL RIDGE LANDFILL (PLAN A)



PHASING OF DRAINAGE STRUCTURE INSTALLATION

PHASE IA	PHASE IB	PHASE IC	PHASE II	PHASE III	PHASE IV	PHASE V
S-16	S-83	S-24	S-5	S-27	S-2	S-44
S-17	S-84	S-25	S-6	S-28	S-3	S-45
S-19	S-85		S-7	S-29	S-33	S-47
S-20			S-8	S-30	S-34	S-48
S-21			S-10	S-31	S-35	S-49
S-22			S-11	S-103	S-36	S-50
S-73			S-13		S-38	S-52
S-74			S-14		S-39	S-53
S-75			S-77		S-41	S-55
S-86			S-78		S-42	S-56
S-92			S-87			
S-93			S-88			
S-98			S-94			
S-99			S-95			
S-100			S-101			
S-102						

(DUAL FILTER BED, STORMWATER PUMP STATION, FORCE MAIN AND SPREADER PIPE INCLUDED IN PHASE IA)

NOTE: PHASING SHOWN REPRESENTS THE MINIMUM STORMWATER SYSTEM REQUIRED TO OPERATE COMMENSURATE PHASE OF LANDFILL. ADDITIONAL STORMWATER FACILITIES MAY BE CONSTRUCTED IN EARLIER PHASES.

NOTE: REFER TO SHEET 25B FOR LOCATIONS OF TERRACES AND SWALES ON LANDFILL SIDESLOPES.