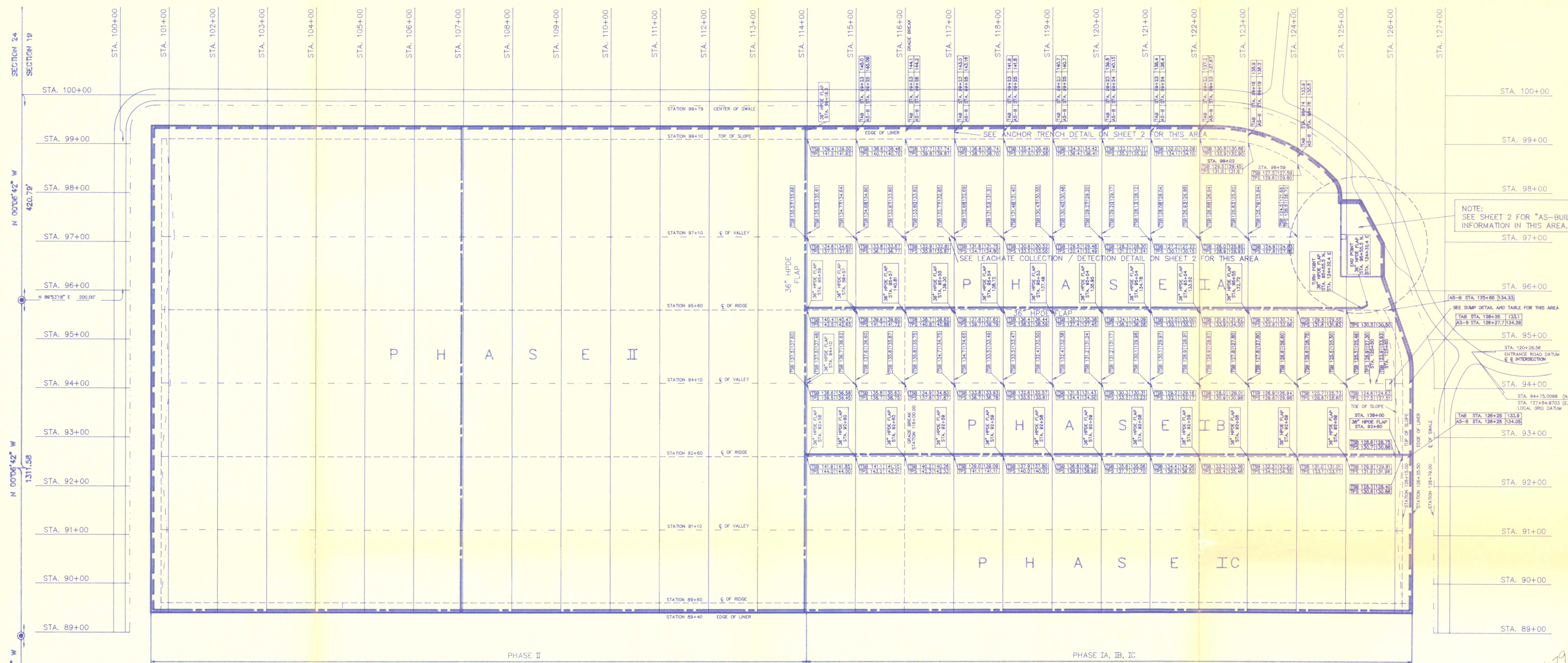


SCALE: 1" = 100'



NOTE: SEE SHEET 2 FOR "AS-BUILT" INFORMATION IN THIS AREA.

SEE SUMP DETAIL AND TABLE FOR THIS AREA

SEE LEACHATE COLLECTION / DETECTION DETAIL ON SHEET 2 FOR THIS AREA

SEE ANCHOR TRENCH DETAIL ON SHEET 2 FOR THIS AREA

SECTION 24  
SECTION 19  
N 00°06'42" W 420.79'  
N 00°06'42" W 1311.38'  
N 00°06'42" W 311.56'  
BOUNDARY CORNER

LOCAL GRID DATUM  
NORTHERLY LINE OF GRID: N. 89° 53' 18" E.  
WESTERLY LINE OF GRID: N. 00° 06' 42" W.  
REFERENCE STATIONS: 100+00.00 (N-S).  
100+00.00 (E-W) AT THE POINT OF INTERSECTIONS (P.I.) FOR CURVE NUMBER 2

LEGEND

- PHASE LINE
- 36" HPDE FLAP
- LINER
- E OF VALLEY
- E OF RIDGE
- E OF DITCH
- FLOW ARROWS

TOP OF SUBBASE ELEV. (DESIGN) ("AS-BUILT")  
TSB 149.2  
TSS 151.3

TOP OF PROTECTIVE SOIL ELEV.  
TOP OF ANCHOR BERM (DESIGN) ("AS-BUILT")  
TAB STA. 99+23 145.0  
AS-B STA. 99+25 145.00

# "AS-BUILT"

LINER SYSTEM AS-BUILT FOR TRAIL RIDGE LANDFILL JACKSONVILLE, DUVAL COUNTY, FLORIDA

**SUNSHINE STATE SURVEYORS, INC.**  
SURVEYORS & LAND PLANNERS 3131 ST. JOHN'S BLUFF RD. SOUTH, JACKSONVILLE, FLORIDA 32216  
(904) 642-8550

RECEIVED JUN 18 1992 DEN JACKSONVILLE

## SHEET 1 OF 3

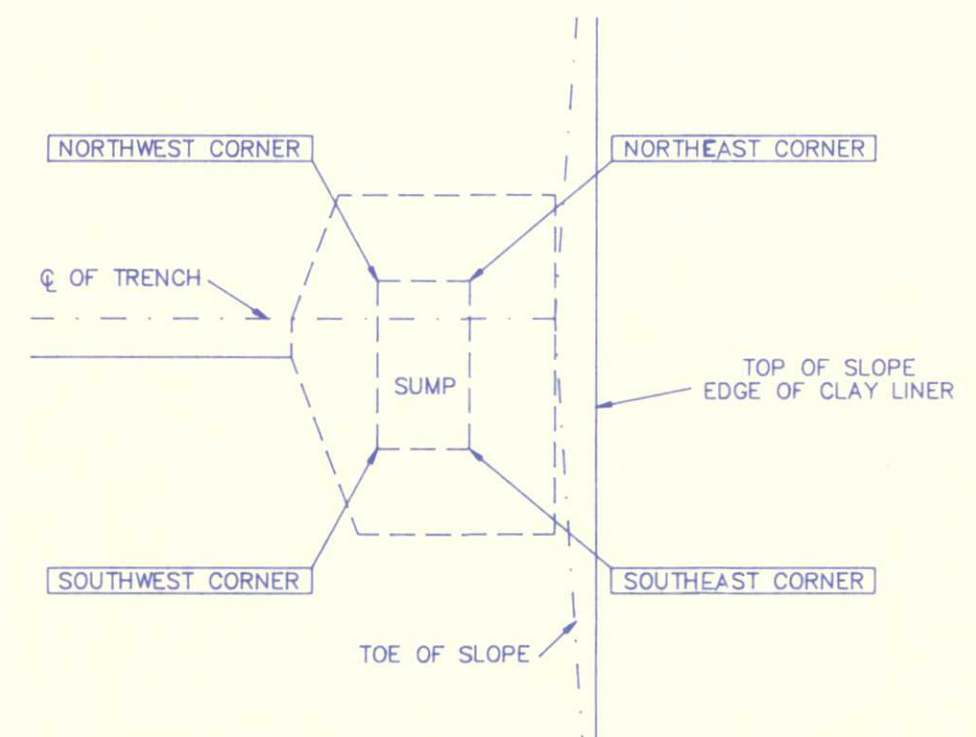
DATE	PHASE
5-12-92	IA
5-13-92	REVISED SPOT EL. OF TPS AT STA. 123+00 E AND STA. 99+02 N
6-12-92	IB

I HEREBY CERTIFY THAT THE CLAY SUB-BASE, PROTECTIVE SAND, 36" HPDE FLAP, AND THE TOP OF CLAY BERM SHOWN HEREON ARE AT THE HORIZONTAL AND/OR VERTICAL LOCATION AS DEPICTED ON THIS "AS-BUILT" AND MEETS THE MINIMUM TECHNICAL STANDARDS AS SET FORTH BY CHAPTER 472.027 OF THE FLORIDA STATUTES.

ROBERT S. CORSAT FLA. REG. SURVEYOR NO. 4341

SUMP TABLE

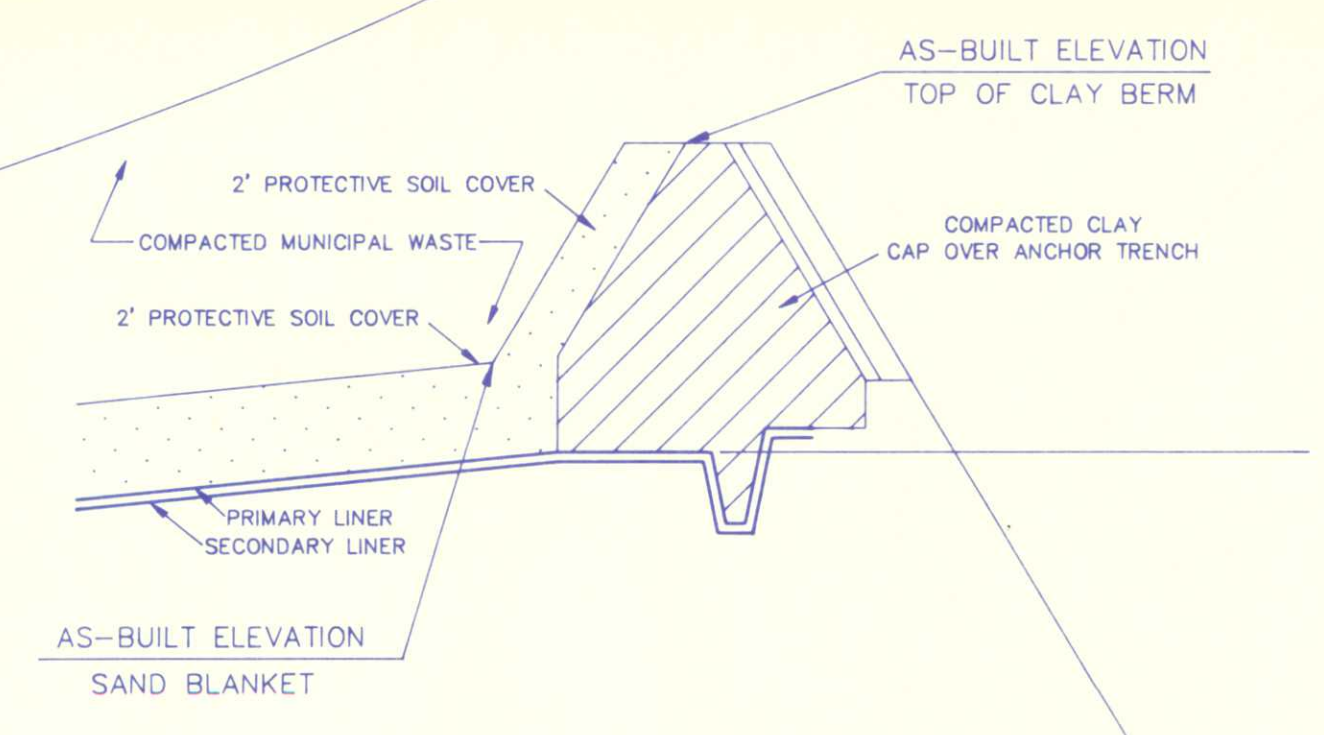
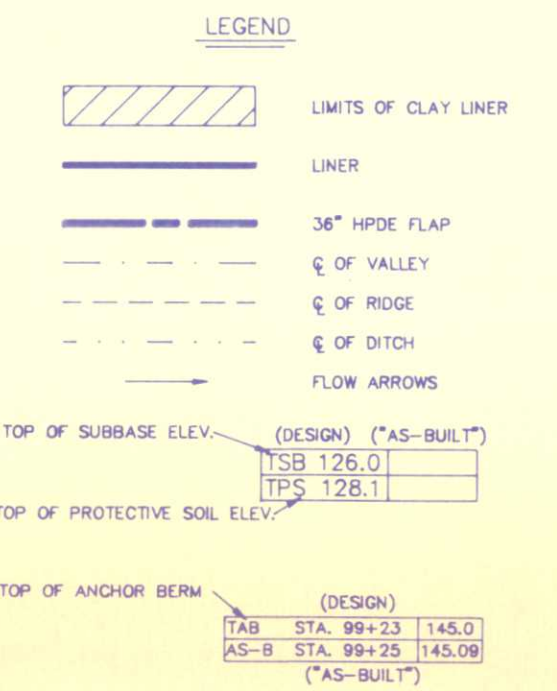
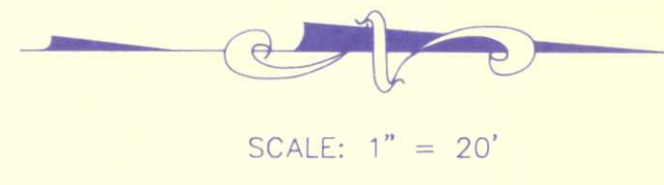
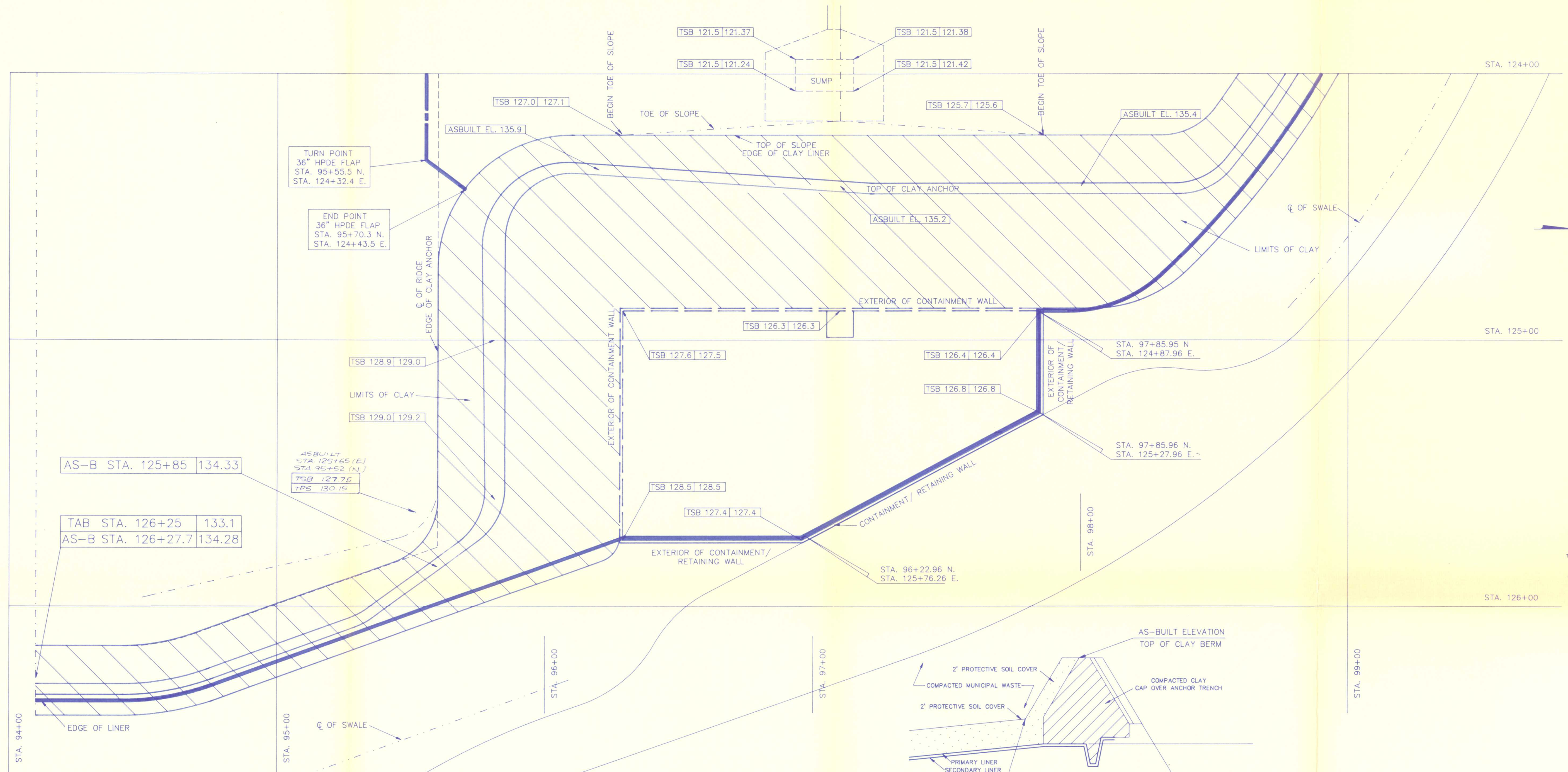
PHASE	CORNER	DESIGN EL.	ASBUILT EL.
IA	NORTHEAST	121.5	121.42
IA	NORTHWEST	121.5	121.38
IA	SOUTHEAST	121.5	121.24
IA	SOUTHWEST	121.5	121.37
IB	NORTHEAST	121.4	121.38
IB	NORTHWEST	121.4	121.34
IB	SOUTHEAST	121.4	121.43
IB	SOUTHWEST	121.4	121.36



SUMP DETAIL

1051679





**NORTH ANCHOR TRENCH DETAIL**

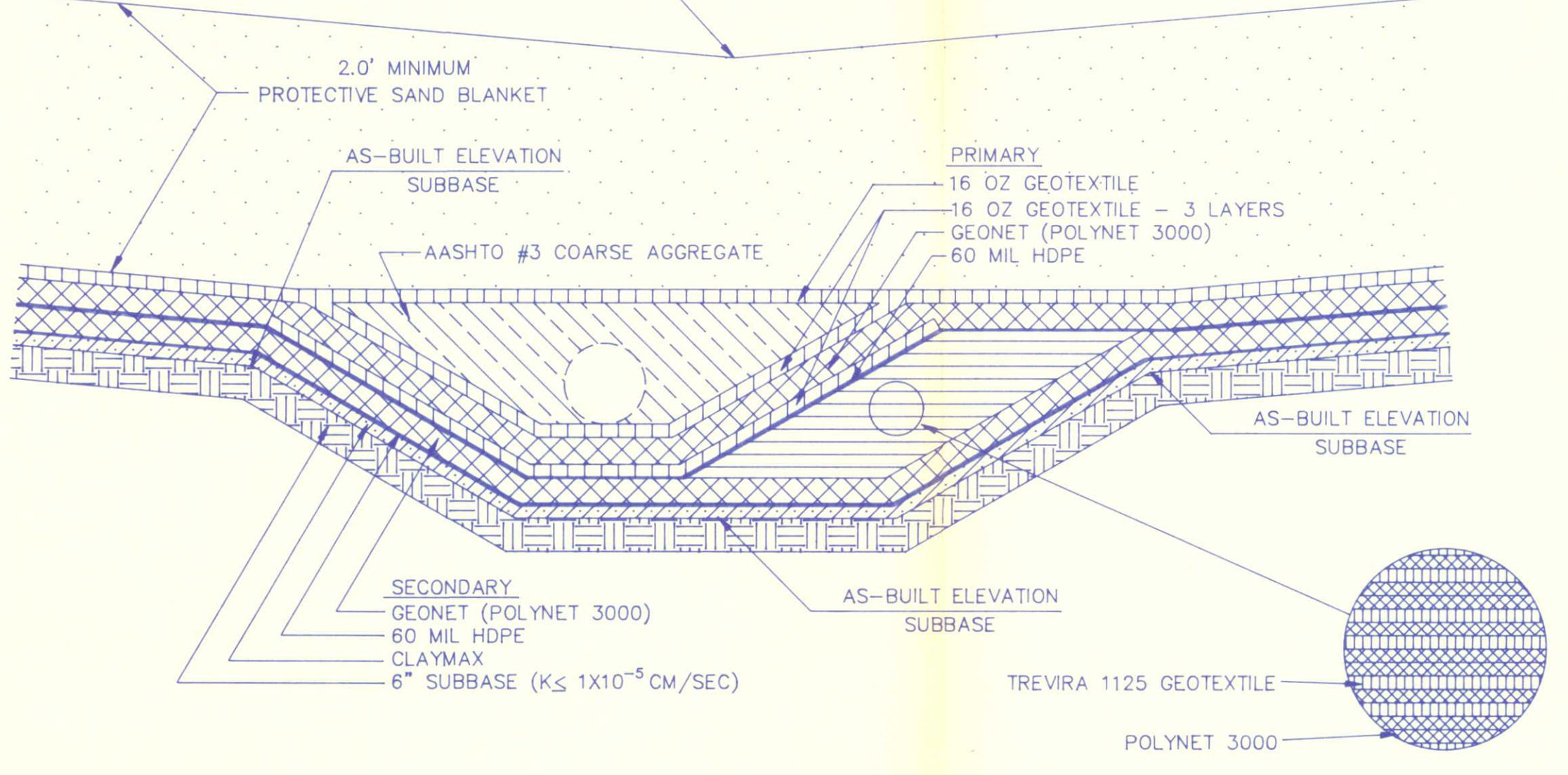
SCALE: 1" = 20' HORIZONTAL  
1" = 4' VERTICAL

**SHEET 2 OF 3**

DATE	PHASE
5-12-92	IA
5-13-92	REVISED LOCATION OF CLAY ANCHOR BERM AT STA. 96+20±
6-12-92	IB

I HEREBY CERTIFY THAT THE CLAY SUB-BASE, PROTECTIVE SAND, 36" HPDE FLAP, AND THE TOP OF CLAY BERM SHOWN HEREON ARE AT THE HORIZONTAL AND/OR VERTICAL LOCATION AS DEPICTED ON THIS "AS-BUILT" AND MEETS THE MINIMUM TECHNICAL STANDARDS AS SET FORTH BY CHAPTER 472.027 OF THE FLORIDA STATUTES.

*Robert S. Corsat*  
ROBERT S. CORSAT, FLA. REG. SURVEYOR NO. 4341



**LEACHATE COLLECTION / DETECTION TRENCH DETAIL**

# "AS-BUILT"

**LINER SYSTEM AS-BUILT FOR TRAIL RIDGE LANDFILL JACKSONVILLE, DUVAL COUNTY, FLORIDA**



**SUNSHINE STATE SURVEYORS, INC.**  
SURVEYORS & LAND PLANNERS 3131 ST. JOHNS BLUFF RD. SOUTH, JACKSONVILLE, FLORIDA 32216  
(904) 642-8550



"AS-BUILT" BY SUNSHINE STATE SURVEYORS INC.

PHASE	DATE	LOCATION	
I A	3-9-92 3-9-92	STA. 95+60.00 TO STA. 97+86.00 (NORTH) STA. 124+17.60 TO STA. 125+76.00 (EAST)	(CONTAINMENT AREA)
I A	3-14-92 3-14-92	STA. 95+60.00 TO STA. 99+10.00 (NORTH) STA. 114+00.00 TO STA. 117+00.00 (EAST)	
I A	3-18-92 3-18-92	STA. 97+06.00 TO STA. 99+10.00 (NORTH) STA. 114+00.00 TO STA. 118+00.00 (EAST)	
I A	3-20-92 3-20-92	STA. 97+05.00 TO STA. 99+10.00 (NORTH) STA. 119+00.00 (EAST)	
I A	3-20-92 3-20-92	STA. 97+05.00 TO STA. 97+15.00 (NORTH) STA. 13+80.00 TO STA. 14+00.00 (EAST)	
I A	3-21-92 3-21-92	STA. 97+05.00 TO STA. 99+10.00 (NORTH) STA. 120.00 (EAST)	
I A	3-25-92 3-25-92	STA. 95+60.00 TO STA. 99+10.00 (NORTH) STA. 121+00.00 TO STA. 122+00.00 (EAST)	
I A	3-25-92 3-25-92	STA. 96+95.00 TO STA. 97+25.00 (NORTH) STA. 125+00.00 TO STA. 125+50.00 (EAST)	(CONTAINMENT AREA)
I A	3-31-92 3-31-92	STA. 95+60.00 TO STA. 99+01.68 (NORTH) STA. 122+20.00 TO STA. 123+00.00 (EAST)	
I A	4-1-92 4-1-92	STA. 95+60.00 TO STA. 98+59.00 (NORTH) STA. 123+20.00 TO STA. 124+00.00 (EAST)	
I B	4-6-92 4-6-92	STA. 92+60.00 TO STA. 95+45.00 (NORTH) STA. 114+00.00 TO STA. 117+00.00 (EAST)	
I B	4-10-92 4-10-92	STA. 92+60.00 TO STA. 95+45.00 (NORTH) STA. 118+00.00 TO STA. 122+00.00 (EAST)	
I A & I B	4-23-92 4-23-92	STA. 92+60.00 TO STA. 98+00.00 (NORTH) STA. 124+00.00 TO STA. 126+15.00 (EAST)	
I C	5-4-92 5-4-92	STA. 89+40.00 TO STA. 92+35.00 (NORTH) STA. 114+00.00 TO STA. 121+00.00 (EAST)	
I C	5-6-92 5-6-92	STA. 89+40.00 TO STA. 92+35.00 (NORTH) STA. 122+00.00 TO STA. 123+00.00 (EAST)	
I C	5-8-92 5-8-92	STA. 89+40.00 TO STA. 92+35.00 (NORTH) STA. 124+00.00 TO STA. 125+85.00 (EAST)	
I A	5-8-92 5-8-92	STA. 95+53.00 TO STA. 99+31.00 (NORTH) STA. 114+00.00 TO STA. 124+00.00 (EAST)	
I A	5-11-92 5-11-92	STA. 95+60.00 TO STA. 99+08.00 (NORTH) STA. 114+00.00 TO STA. 123+00.00 (EAST)	
I C	5-11-92 5-11-92	STA. 89+40.00 TO STA. 92+35.00 (NORTH) STA. 125+90.00 TO STA. 126+15.00 (EAST)	

"AS-BUILT" BY SUNSHINE STATE SURVEYORS INC.

PHASE	DATE	LOCATION
II	5-9-92 5-9-92	STA. 95+60.00 TO STA. 99+10.00 (NORTH) STA. 100+90.90 TO STA. 103+00.00 (EAST)
II	5-20-92 5-20-92	STA. 95+60.00 TO STA. 99+10.00 (NORTH) STA. 104+00.00 TO STA. 106+00.00 (EAST)
II	5-27-92 5-27-92	STA. 95+60.00 TO STA. 99+10.00 (NORTH) STA. 109+00.00 TO STA. 110+00.00 (EAST)
II	5-28-92 5-28-92	STA. 95+60.00 TO STA. 99+10.00 (NORTH) STA. 111+00.00 (EAST)
II	6-2-92 6-2-92	STA. 92+60.00 TO STA. 95+40.00 (NORTH) STA. 100+85.00 TO STA. 103+00.00 (EAST)
IB	6-3-92 6-3-92	STA. 92+60.00 TO STA. 95+85.5 (NORTH) STA. 114+00.00 TO STA. 126+00.00 (EAST)
IB	6-11-92 6-11-92	STA. 92+60.00 TO STA. 95+60.00 (NORTH) STA. 125+50.00 TO STA. 126+27.70 (EAST)
IB	6-12-92 6-12-92	STA. 92+60.00 (NORTH) STA. 126+13.00 TO STA. 126+25.00 (EAST)

SHEET 3 OF 3

DATE	PHASE
5-12-92	IA
5-13-92	REVISED SPOT EL. OF TPS AT STA. 123+00 E AND STA. 99+02 N
6-12-92	IB

I HEREBY CERTIFY THAT THE CLAY SUB-BASE, PROTECTIVE SAND, 36" HDPE FLAP, AND THE TOP OF CLAY BERM SHOWN HEREON ARE AT THE HORIZONTAL AND/OR VERTICAL LOCATION AS DEPICTED ON THIS "AS-BUILT" AND MEETS THE MINIMUM TECHNICAL STANDARDS AS SET FORTH BY CHAPTER 472.027 OF THE FLORIDA STATUTES.

*Robert S. Corsata*  
ROBERT S. CORSATA, L.A., REG. SURVEYOR NO. 4341

# "AS-BUILT"

**LINER SYSTEM AS-BUILT  
FOR  
TRAIL RIDGE LANDFILL  
JACKSONVILLE, DUVAL COUNTY, FLORIDA**



**SUNSHINE STATE SURVEYORS, INC.**

SURVEYORS & LAND PLANNERS 3131 ST. JOHNS BLUFF RD. SOUTH, JACKSONVILLE, FLORIDA 32216  
(904) 642-8550